

Oracle® Fusion Middleware

Using Oracle Sales Cloud Adapter

Release 12.2.1.1.0

E73569-01

June 2016

Oracle Fusion Middleware Using Oracle Sales Cloud Adapter, Release 12.2.1.1.0

E73569-01

Copyright © 2015, 2016, Oracle and/or its affiliates. All rights reserved.

Primary Author: Mark Kennedy

This software and related documentation are provided under a license agreement containing restrictions on use and disclosure and are protected by intellectual property laws. Except as expressly permitted in your license agreement or allowed by law, you may not use, copy, reproduce, translate, broadcast, modify, license, transmit, distribute, exhibit, perform, publish, or display any part, in any form, or by any means. Reverse engineering, disassembly, or decompilation of this software, unless required by law for interoperability, is prohibited.

The information contained herein is subject to change without notice and is not warranted to be error-free. If you find any errors, please report them to us in writing.

If this is software or related documentation that is delivered to the U.S. Government or anyone licensing it on behalf of the U.S. Government, the following notice is applicable:

U.S. GOVERNMENT END USERS: Oracle programs, including any operating system, integrated software, any programs installed on the hardware, and/or documentation, delivered to U.S. Government end users are "commercial computer software" pursuant to the applicable Federal Acquisition Regulation and agency-specific supplemental regulations. As such, use, duplication, disclosure, modification, and adaptation of the programs, including any operating system, integrated software, any programs installed on the hardware, and/or documentation, shall be subject to license terms and license restrictions applicable to the programs. No other rights are granted to the U.S. Government.

This software or hardware is developed for general use in a variety of information management applications. It is not developed or intended for use in any inherently dangerous applications, including applications that may create a risk of personal injury. If you use this software or hardware in dangerous applications, then you shall be responsible to take all appropriate fail-safe, backup, redundancy, and other measures to ensure its safe use. Oracle Corporation and its affiliates disclaim any liability for any damages caused by use of this software or hardware in dangerous applications.

Oracle and Java are registered trademarks of Oracle and/or its affiliates. Other names may be trademarks of their respective owners.

Intel and Intel Xeon are trademarks or registered trademarks of Intel Corporation. All SPARC trademarks are used under license and are trademarks or registered trademarks of SPARC International, Inc. AMD, Opteron, the AMD logo, and the AMD Opteron logo are trademarks or registered trademarks of Advanced Micro Devices. UNIX is a registered trademark of The Open Group.

This software or hardware and documentation may provide access to or information about content, products, and services from third parties. Oracle Corporation and its affiliates are not responsible for and expressly disclaim all warranties of any kind with respect to third-party content, products, and services unless otherwise set forth in an applicable agreement between you and Oracle. Oracle Corporation and its affiliates will not be responsible for any loss, costs, or damages incurred due to your access to or use of third-party content, products, or services, except as set forth in an applicable agreement between you and Oracle.

Contents

| | |
|---|-----|
| Preface | v |
| Audience | v |
| Related Resources | v |
| Conventions | v |
| | |
| 1 Introduction to Oracle Sales Cloud Adapter | |
| Oracle Sales Cloud | 1-1 |
| Installing the Cloud Adapters | 1-2 |
| Performing Postinstallation Configuration Tasks | 1-2 |
| Specifying the Oracle Sales Cloud Service Catalog Service WSDL or Event Catalog URL | 1-2 |
| Obtaining the Authentication Credentials | 1-6 |
| Unsupported Features | 1-6 |
| Restrictions | 1-6 |
| | |
| 2 Understanding Oracle Sales Cloud Adapter Features | |
| Adapter Architecture | 2-1 |
| Custom Business Objects | 2-3 |
| Understanding Oracle Sales Cloud Adapter Design Integration Patterns | 2-4 |
| Designing an Integration with the Adapter Configuration Wizard | 2-4 |
| Monitoring Your Application During Runtime | 2-6 |
| | |
| 3 Designing SOA Composite Applications | |
| Creating a SOA Composite Application | 3-1 |
| Adding an Adapter to a SOA Composite Application as a Service or Reference | 3-1 |
| Completing Design of a SOA Composite Application | 3-3 |
| | |
| 4 Designing Oracle Service Bus Business Services | |
| Creating an Oracle Service Bus Business Service | 4-1 |
| Adding an Adapter to a Business Service as a Service or Reference | 4-1 |
| Completing Design of an Oracle Service Bus Business Service | 4-3 |

| | | |
|----------|--|-----|
| 5 | Configuring Oracle Sales Cloud Properties | |
| | Configuring Basic Information Properties | 5-1 |
| | What You Can Do from the Basic Info Page..... | 5-1 |
| | What You See on the Basic Info Page | 5-2 |
| | Configuring Oracle Cloud Adapter Connection and CSF Key Properties..... | 5-2 |
| | What You Can Do from the Oracle Cloud Adapter Connection Page | 5-2 |
| | What You See on the Oracle Cloud Adapter Connection Page..... | 5-3 |
| | What You Can Do from the Oracle Cloud Adapter CSF Key Page | 5-3 |
| | What You See on the Oracle Cloud Adapter CSF Key Page..... | 5-4 |
| | Configuring Oracle Sales Cloud Source Request Properties..... | 5-4 |
| | What You Can Do from the Oracle Sales Cloud Source Request Page | 5-4 |
| | What You See on the Oracle Sales Cloud Source Request Page..... | 5-5 |
| | Configuring Oracle Sales Cloud Source Response Properties | 5-6 |
| | What You Can Do from the Oracle Sales Cloud Trigger Response Page | 5-6 |
| | What You See on the Oracle Sales Cloud Trigger Response Page..... | 5-6 |
| | Configuring Oracle Sales Cloud Target Operation Properties | 5-7 |
| | What You Can Do from the Oracle Sales Cloud Target Operations Page | 5-7 |
| | What You See on the Oracle Sales Cloud Target Operations Page..... | 5-8 |
| | Reviewing Configuration Values on the Summary Page | 5-8 |
| | What You Can Do from the Summary Page | 5-8 |
| | What You See on the Summary Page | 5-9 |
| 6 | Managing Applications | |
| | Managing the Application in Oracle Enterprise Manager Fusion Middleware Control | 6-1 |
| | Testing Oracle Service Bus Business Services from Oracle Service Bus Console..... | 6-2 |
| 7 | Troubleshooting and Error Handling | |
| | Avoiding SSL Exceptions in Oracle JDeveloper When Connecting to the Event URL Using the CSF Key | 7-1 |
| | Connection to Oracle Sales Cloud Inbound Events URL Fails Using the CSF Key | 7-1 |
| | Adding Credential Details to the JCA file Before Event-Based Composite Deployment to the Server | 7-2 |

Preface

Using Oracle Sales Cloud Adapter describes how to use the Oracle Sales Cloud adapter in your SOA composite applications and Oracle Service Bus business services.

Topics:

- [Audience](#)
- [Related Resources](#)
- [Conventions](#)

Audience

Using Oracle Sales Cloud Adapter is intended for users who want to create, deploy, test, and monitor applications that use the Oracle Sales Cloud adapter.

Related Resources

For more information, see these Oracle resources:

- *Developing SOA Applications with Oracle SOA Suite*
- *Administering Oracle SOA Suite and Oracle Business Process Management Suite*
- *Administering Oracle Service Bus*
- *Understanding Technology Adapters*

Conventions

The following text conventions are used in this document:

| Convention | Meaning |
|-----------------|--|
| boldface | Boldface type indicates graphical user interface elements associated with an action, or terms defined in text or the glossary. |
| <i>italic</i> | Italic type indicates book titles, emphasis, or placeholder variables for which you supply particular values. |
| monospace | Monospace type indicates commands within a paragraph, URLs, code in examples, text that appears on the screen, or text that you enter. |

Introduction to Oracle Sales Cloud Adapter

This section introduces Oracle Sales Cloud adapter.

Topics

- [Oracle Sales Cloud](#)
- [Installing the Cloud Adapters](#)
- [Performing Postinstallation Configuration Tasks](#)
- [Specifying the Oracle Sales Cloud WSDL](#)
- [Obtaining the Authentication Credentials](#)
- [Unsupported Features](#)
- [Restrictions](#)

Oracle Sales Cloud

Oracle Sales Cloud enables modern selling with tools that are easy to deploy and use, completely mobile, packed with powerful analytics, and built for collaborative selling and revenue generation. Oracle Sales Cloud includes a set of features for creating and tracking sales campaigns, developing leads into business opportunities, and pursuing opportunities to generate revenue. Sales accounts, leads, and opportunities can be automatically assigned to territories and sales teams.

The Oracle Sales Cloud adapter enables customers to easily integrate their on-premises or SaaS applications with Oracle Sales Cloud without having to know the specific details involved in the integration.

Integration with Oracle Fusion Applications may involve several design-time and runtime considerations that require users to manually build and manage additional logic into their integration for authentication, session management, fault handling, data transformation mappings, and so on. The Oracle Sales Cloud adapter reduces the cost of building and maintaining this complex logic with out-of-the-box features such as a graphical, point-and-click, wizard-based designer. The Oracle Sales Cloud connection:

- Generates automatic mapping to the exposed business object or event subscription that you select during adapter configuration:
 - Business object: Represents a self-contained business document that can be acted upon by the integration. An integration can send requests to create a new record for that business object. They can send a request either to update or delete an existing record for a business object. Integrations can also send requests to retrieve information about one or more records representing that business object.

- Event subscription: Represents an event document to which you subscribe. The event subscription is raised by the Oracle Sales Cloud application.
- Interacts at runtime with the publicly-exposed Oracle Sales Cloud business objects or event subscription to perform operations defined on them.
- Provides contextual information to the developer at design time about the business objects and services available for integration.
- Provides custom objects, both standalone and child, that are referenced indirectly in the Oracle Sales Cloud service WSDL. These objects are presented as first-class, strongly-typed objects.

For more information, see [Configuring Oracle Sales Cloud Properties](#).

Installing the Cloud Adapters

The cloud adapters are automatically installed with Oracle SOA Suite.

After you complete adapter installation, perform the tasks described in [Performing Postinstallation Configuration Tasks](#).

Note: For information about supported versions and platforms, see the release certification matrix at [Supported System Configurations](#).

Performing Postinstallation Configuration Tasks

You must perform postinstallation configuration tasks after installing the cloud adapters.

For information about postinstallation configuration tasks, see the *Oracle Cloud Adapters Postinstallation Configuration Guide*.

Specifying the Oracle Sales Cloud Service Catalog Service WSDL or Event Catalog URL

You must specify a mandatory Oracle Sales Cloud service catalog service WSDL (for accessing business objects) and optionally an event catalog URL (for accessing event subscriptions).

A mandatory Oracle Sales Cloud service catalog service WSDL is required for accessing business objects. You can also optionally specify an event catalog URL for accessing event subscriptions. The service catalog service WSDL is required to configure the adapter for both inbound and outbound endpoints using either business objects or business services. The event catalog URL is required for configuring the inbound adapter for event subscriptions.

Obtaining the Service Catalog Service WSDL

| WSDL Requirements | Where Do You Get the WSDL? |
|---|--|
| <p>The URL must be that of a service catalog service WSDL. The service catalog service is a Fusion Application service that returns a list of external services available for integration. It allows clients to retrieve information about all public Fusion Application service endpoints available for that instance.</p> <p>The service catalog service enables clients to retrieve information about all public Oracle Fusion Application service endpoints available for that instance. The information it returns is specific to the particular cloud instance and also reflects the new services that may have been introduced in patches applied to the instance. This service is used to programmatically discover the SOAP services available on the cloud instance and retrieve the necessary metadata to invoke the SOAP services to manage business objects.</p> | <p>The developer creating an Oracle Sales Cloud connection must work with the Oracle Sales Cloud service administrator to get the concrete WSDL URL for the service catalog service provisioned for the specific SaaS application.</p> |

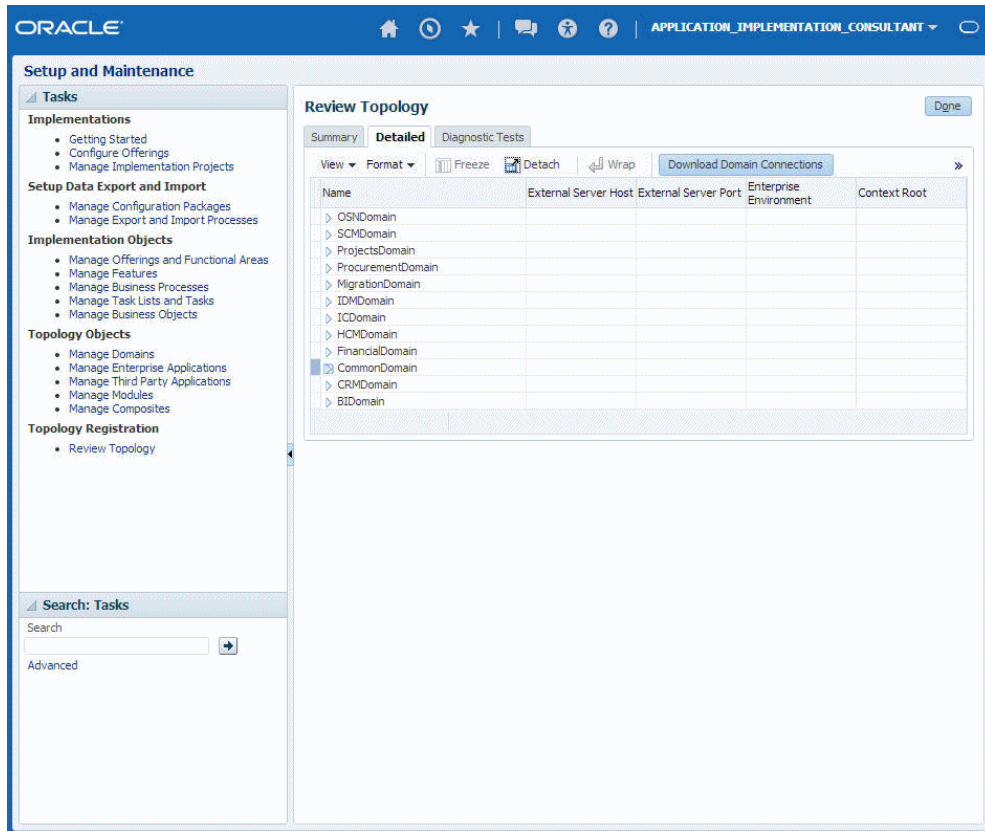
This section describes how to derive the external virtual host and port for a tokenized service catalog service WSDL. The topology information in the Topology Registration setup task contains the external virtual host and port for the domains and applications. The following instructions describe the steps for deriving the values using the service catalog service WSDL URL as an example: `https://atf_server:port/fndAppCoreServices/ServiceCatalogService`.

To access the Review Topology page, the `ASM_REVIEW_TOPOLOGY_HIERARCHY_PRIV` entitlement must be granted to the user's job role. The entitlement is granted to the `ASM_APPLICATION_DEPLOYER_DUTY` duty role, which is inherited by the duty roles `ASM_APPLICATION_DEVELOPER_DUTY` and `ASM_APPLICATION_ADMIN_DUTY`.

If the menu items and tasks described in the following procedure are not available in your cloud instance, your user account is missing the required role. Contact your cloud instance security administrator for assistance.

1. Log in to the cloud instance.
2. Click the **Navigator** icon in the global area in the top part of the window, then chose **Setup and Maintenance** under the **Tools** heading.
3. Select **Review Topology** under the **Topology Registration** section in the **Tasks** regional area on the left side of the window.
4. Click the **Detailed** tab in the middle of the window.

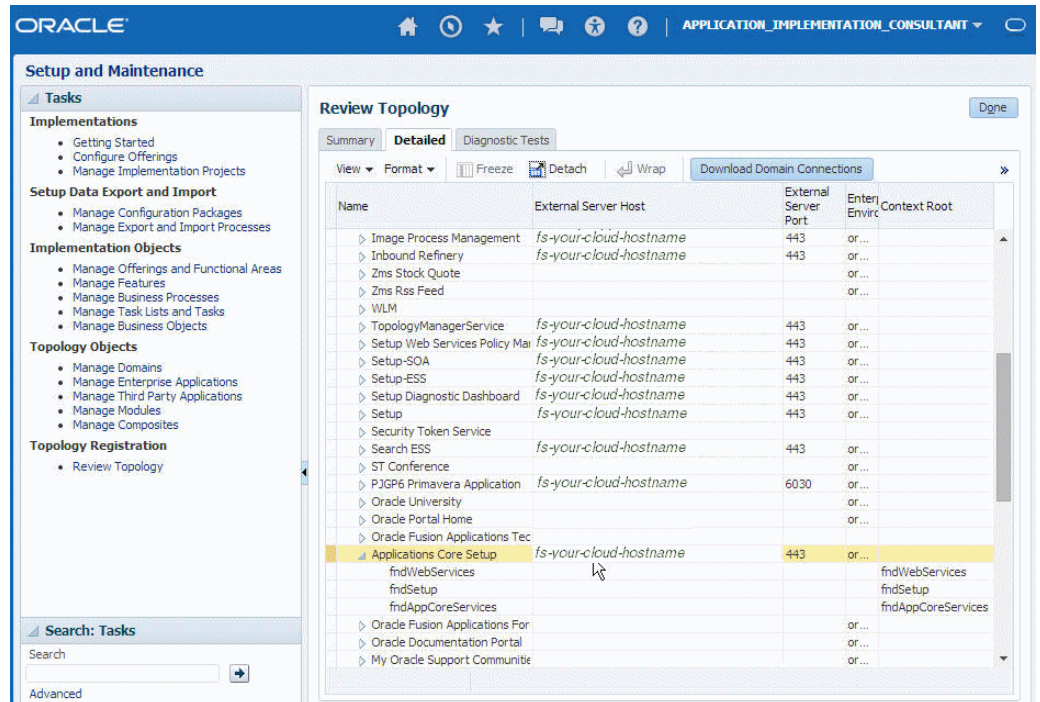
The tab shows the list of domains configured in the cloud instance.



5. Map the token name for the service path value to the domain name in the Topology Manager:

| Token Name in Service Path | Domain Name |
|----------------------------|-------------------|
| atf_server | CommonDomain |
| crm_server | CRMDomain |
| fin_server | FinancialDomain |
| hcm_server | HCMDomain |
| ic_server | ICDomain |
| prc_server | ProcurementDomain |
| prj_server | ProjectsDomain |
| scm_server | SCMDomain |

6. Expand the domain name and select any external virtual host and port for the J2EE applications that are deployed on the domain. In the sample window, the values for this particular instance are **fs-your-cloud-hostname** and **443**, respectively.



7. Replace the `domainName_server:PortNumber` with the external virtual host and port identified in the previous step. For example:

```
https://fs-your-cloud-hostname:port/fndAppCoreServices/ServiceCatalogService?wsdl
```

Obtaining the Event Catalog URL

You must know the customer relationship management (CRM) URL format to access the CRM application user interface. Follow the URL format to determine the event catalog URL. For example, if the CRM URL format is:

```
https://fusxxxx-crm-ext.us.oracle.com/customer/faces/CrmFusionHome
```

Then the event catalog URL is:

```
https://fusxxxx-crm-ext.us.oracle.com/soa-infra
```

Note: If you subscribe to an event on the Request page of the Adapter Configuration Wizard, you must then manually update the inbound JCA file in the `Application_Name/Project_Name/SOA/Adapters/` directory with the following details:

```
<property name="csfkey" value="osc" />
  <property name="csfMap" value="oracle.wsm.security" />
```

This is because even though you specified CSF details on the Create CSF Key page of the Adapter Configuration Wizard, these details were not added to the JCA file. When you then attempt to deploy the composite that includes the inbound event subscription, it fails. Manually updating the inbound JCA file enables deployment to be successful.

Obtaining the Authentication Credentials

Obtain the user name and password that are required for creating the Credential Store Framework (CSF) authentication key in Oracle JDeveloper from your SOA domain administrator. These credentials are required for most cloud adapters.

If you are configuring the Oracle Eloqua Cloud adapter, the credentials require three properties (company, username, and password).

Unsupported Features

The adapter does not support the following features:

- Adapter runtime retry configuration properties such as `jca.retry.count`, `jca.retry.backoff`, `jca.retry.interval`, and `jca.retry.maxInterval`.
- Message recovery in the Error Hospital in Oracle Enterprise Manager Fusion Middleware Control.
- The display of properties in the **Properties** tab for a reference (outbound) adapter in Oracle Enterprise Manager Fusion Middleware Control (for example, service WSDL URL, CSF key used, and others). These are the reference adapters that you select on the Services and References page.
- Rejected message handling
- Metrics such as the number of invocations.
- The following message encryption and decryption features available when you right-click a cloud adapter in the **Exposed Service** swimlane or **External References** swimlane in Oracle JDeveloper:
 - **Protect Sensitive Data > Encrypt Request Data** for cloud adapters in the **Exposed Service** swimlane.
 - **Protect Sensitive Data > Decrypt Sensitive Data** for cloud adapters in the **External References** swimlane.
- The policy attachments feature available when you right-click a cloud adapter in the **Exposed Service** swimlane or **External References** swimlane in Oracle JDeveloper.

Restrictions

Note the following restrictions:

Not all Oracle Fusion Application services are available in SaaS mode because the Oracle Fusion Application topology splits visibility to web and service resources into two categories: internal and external. Therefore, some services are internal and cannot be used by the adapter for integration. Only external services are available for public consumption.

The adapter cannot be used for integrating the interfamily modules, because services defined on them are not external services.

Understanding Oracle Sales Cloud Adapter Features

The Oracle Sales Cloud adapter provides the following features.

Topics

- [Adapter Architecture](#)
- [Custom Business Objects](#)
- [Understanding Oracle Sales Cloud Adapter Design Integration Patterns](#)
- [Designing an Integration with the Adapter Configuration Wizard](#)
- [Monitoring Your Application During Runtime](#)

Adapter Architecture

The adapter includes the following key features.

Service Catalog Service

The WSDL URL that you specify during adapter configuration must be that of a service catalog service WSDL. The service catalog service is a Fusion Application service that returns a list of external services available for integration. The service catalog service provides the following features:

- Provisioned on the cloud instance.
- Provides public external service information for the specific cloud instance. It reflects new services introduced in patches and customizations.
- Gets the endpoint and metadata for public external services on the cloud instance on which the service catalog service is provisioned. The information that it returns is specific to the particular cloud instance and reflects new services that may have been introduced in patches applied to the instance. Oracle Fusion Applications in the Oracle Applications cloud enable partners and customers to use this service to programmatically discover the SOAP services available on the cloud instance and retrieve the necessary metadata to invoke the SOAP services to manage business objects.

Business Objects

The business object that the service implements is composed of a hierarchy of logical entities that contain a collection of attributes. As an example, the opportunity service is defined on the opportunity business object. The opportunity business object consists of many entities such as an opportunity contact and opportunity lead. The business object is the functional object on which the service operates. Examples include opportunity, sales account, sales lead, marketing campaign, and sales forecast.

Event Subscriptions

Event subscriptions represent an event document to which you subscribe. The event subscription is raised by the Oracle Sales Cloud application.

Business Object Notation

The business objects are grouped into related objects that are in turn grouped into higher-level related objects. For example, the opportunity service business object contains the following value:

- CRM : Opportunity Management : Opportunity

The above value means the service operates on the opportunity object. The opportunity object is grouped into a related set of objects called opportunity management that in turn is grouped into a larger set of related objects called CRM (Customer Relationship Management). Other business objects included in the opportunity management grouping are sales method and sales revenue. Other logical business object groups in CRM are lead management and partner management.

Life Cycle of Business Object Services

The business object service goes through three life cycle phases:

- **Active:** This phase starts when the service is first delivered and lasts until it is deprecated.
- **Deprecated:** A service may be deprecated when it is superseded by a newer version of the service or there is a planned obsolescence in a future release. The deprecated status means that the service is still supported, but becomes obsolete in a later release.

Deprecated services do not mean they are not supported. They continue to be supported until they become obsolete. Deprecated services must go through the deprecation cycle during which users are told that the service is going to be withdrawn at a future time. However, it is still a service that must be supported.

If a selected business object or service has a life cycle value of deprecated, a warning message is displayed. If the business object or service captures information about a replacement business object or service, then it may also be displayed. This information comes from the annotation element in the service's WSDL.

A portion of a service WSDL is shown below.

```
<wsdl:documentation xmlns:oer="http://xmlns.oracle.com/oer">
<name>Opportunity Service</name>
<description>A service to create, update, get, find, or delete opportunities.
  WARNING: This service will be deprecated and replaced with a newer version in
  the upcoming release.</description>
<oer:lifecycle>Active</oer:lifecycle>
<oer:compatibility>Supported - Backward Compatibility Assured</oer:compatibility>
. . .
<oer:category name="lbo">
<value>CRM-CRM : MOO-Opportunity Management : MOO_OPPORTUNITY-Opportunity</value>
</oer:category>
</wsdl:documentation>
```

New service consumers should consume the newer active version of the service and existing customers should migrate to the newer active version of the service.

- **Obsolete:** The service is no longer shipped or supported.

Supportability

The public external SOAP services are supported throughout their life cycle until they are obsolete. Conversely, services that are considered private and not intended for partners and customers to consume are not supported.

Cloud Services

The cloud web services (for example, for Oracle Sales Cloud or Oracle HCM Cloud) provide access to an application programming interface (API) that companies can use to build programs to integrate with the cloud (for example, Oracle Sales Cloud or Oracle HCM Cloud). The API consists of a set of WSDL files that describes the interface to the cloud objects. This provides a programmatic interface for accessing cloud information (for example, for Oracle Sales Cloud or Oracle HCM Cloud). A customer application can use the WSDL files through standard web services development tools. The web services API allows companies to build programs to integrate with the cloud (for example, Oracle Sales Cloud or Oracle HCM Cloud).

Some common examples of client integrations include integrations of CRM and back-office applications. You can retrieve real-time sales and marketing information from the cloud (for example, Oracle Sales Cloud or Oracle HCM Cloud) and use it in financial and other back-office applications. For example, you can retrieve information about recently closed opportunities through the web services interface and insert this information into an order entry system that has a web services user interface. In addition, you can store information from back-office applications for instant access by users, which is visible in custom fields.

Security

Prior to accessing the fusion web services, user credentials must be supplied in compliance with the security policies attached to the cloud services (for example, Oracle Sales Cloud or Oracle HCM Cloud). Upon successful authentication, the user is logged in and can issue web service requests to access and retrieve data. All cloud web services are stateless (for example, Oracle Sales Cloud or Oracle HCM Cloud) such that each web service call is an atomic transaction and is not associated to a persistent session. Management of the stateless web service calls is handled by the underlying fusion framework and is abstracted from the end user.

Custom Business Objects

The adapter includes support for custom business objects.

Custom objects are similar to user-defined objects, which are added by the user in the deployed instance.

Custom objects and custom attributes have "_c" appended to their names. Custom objects are exposed using a generic service interface. The custom object web service contains generic operations to which the custom object is passed as a parameter. Examining the schema that is referenced by the service WSDL shows the details of the parameters of the available operations.

Understanding Oracle Sales Cloud Adapter Design Integration Patterns

Oracle Sales Cloud adapter supports the following design integration patterns in the Adapter Configuration Wizard.

Outbound Integration from Oracle Sales Cloud Adapter into the Oracle Sales Cloud Application

- You configure the Oracle Sales Cloud adapter to connect to the Oracle Sales Cloud application.
- You navigate through the set of available business objects (standard and custom) and event subscriptions and select an operation to invoke the object. You can also use the search facility to locate a business object.
- You save the adapter configuration and exit the Adapter Configuration Wizard.
- You map the application business object with the logical business object of Oracle Sales Cloud.
- You complete the design of the SOA composite application.

At runtime, the SOA composite application performs the selected operation on the business object on Oracle Sales Cloud using the Oracle Sales Cloud adapter.

Inbound Integration into Oracle Sales Cloud Adapter from the Oracle Sales Cloud Application

The Oracle Sales Cloud adapter can also be configured for inbound connectivity. For example, you may want to integrate an on-premise application with the Oracle Sales Cloud application by defining an inbound service interface using the Oracle Sales Cloud adapter. This service is then invoked by Oracle Sales Cloud.

- You define an inbound service interface to be invoked by Oracle Sales Cloud.
- You configure a service endpoint by browsing through a list of objects. You select the business object to receive from Oracle Sales Cloud as a request payload to this SOA composite application.
- You complete the Oracle Sales Cloud adapter configuration.
- You complete the design of the SOA composite application as per the business requirements.

Designing an Integration with the Adapter Configuration Wizard

You use the Adapter Configuration Wizard to include the Oracle Sales Cloud adapter in a SOA composite application or an Oracle Service Bus business service.

The Adapter Configuration Wizard consists of configuration pages that enable you to select the artifacts required to communicate with the Oracle Sales Cloud application. You can configure the adapter in the inbound (source) direction or the outbound (target) direction.

Note: If the Localize Files dialog is displayed during adapter configuration, click **Cancel**. You cannot localize the WSDL file.

- Inbound (source) direction:

- The Basic Info page prompts you to enter a meaningful name and optional description.
- The Connection page prompts you to specify the WSDL, security policy (username password token), and CSF authentication key to use. The authentication key is created by clicking the **Add** icon to specify the key name, user name, and password.

You can also test the connection to the Oracle Sales Cloud application on the Connection page. This enables you to confirm that the URL to the service catalog service and credentials are correct. Status is displayed that indicates whether the connection is successful and whether the credentials are authenticated by the Oracle Sales Cloud application. Any errors that occurred during the attempt to connect are also displayed.

- The Request page prompts you to select the business object or event subscription to receive as a request from the Oracle Sales Cloud application.

Note:

- ◆ When you select a business object in the inbound direction, a description is displayed below the table, but life cycle information about the selected object (for example, active or deprecated) is not displayed. In the outbound direction, life cycle information for the business object is displayed.
 - ◆ No callback is expected in case of event subscriptions. Therefore, you must select **None** as the response on the Response page.
-
-

To get all available data objects in the Oracle Sales Cloud instance, the adapter first reads the schema document (.XSD) that is referenced in the service's WSDL. The adapter then parses this XSD to obtain the list of all schema imports and shows them as data objects.

For example, the adapter displays the opportunity business object and its useful metadata first by reading the opportunity service's WSDL and the referenced schema `OpportunityService.xsd` file. The XSD in turn imports another schema `Opportunity.xsd` in which the opportunity business object is defined. The metadata for the opportunity business object is defined in this schema.

A search facility is provided that enables you to filter the display of business objects for quick selection. When you enter a search string, the list renders only the matching business objects in the list browser instead of showing all objects.

- The Response page prompts you to select the business object for the integration to send as a response document to the Oracle Sales Cloud application. To send no response, select **None**. You can also optionally select to send an immediate response back to the Oracle Sales Cloud application. An immediate response indicates a conversational response. For an immediate response, you can select any of the data objects as a response document.
- The Summary page displays your selections from the previous pages.
- Outbound (source) direction:
 - The Basic Info page prompts you to enter a meaningful name and optional description. This is the same page that is displayed in the inbound direction.

- The Connection page prompts you to specify the WSDL, security policy (none, basic authentication, or username password token), and CSF authentication key to use. This is the same page that is displayed in the inbound direction.

The Operations page prompts you to select a business object or service and the operation to perform on your selection.

A search facility based on service names is also provided. To quickly select a business service, you type a search string. The list renders only matching business services in the list browser instead of showing all services.

- The Summary page displays your selections from the previous pages.

The following artifacts are created for each adapter instance and displayed in the Applications window in Oracle JDeveloper:

- WSDL file: Provides a simplified user experience in terms of creating data mappings, while integrating with the Oracle Sales Cloud application services. For example, an abstract WSDL defines strongly-typed types, the name of the operation and business object selected, and the request and response structures.
- JCA file: Contains the internal implementation details used by the adapter during runtime. It contains the different interaction and connection properties used by the adapter.

When application configuration is complete, you can deploy the application from Oracle JDeveloper to the runtime environment.

Note: The wizard does not support the creation of response message callbacks. As an alternative, you can design your BPEL process to include activities that support callbacks.

Note: If you re-edit an already configured Oracle Sales Cloud adapter service or reference, the service catalog WSDL is replaced with the service URL. You must re-enter the service catalog WSDL for the adapter to work correctly.

For information about the details to specify in the fields of the wizard pages, see [Configuring Oracle Sales Cloud Properties](#).

Monitoring Your Application During Runtime

You can monitor your application from the runtime environment.

You use the runtime part of the adapter for delivering the information generated during design time to the service endpoint. You can monitor your SOA composite application or Oracle Service Bus business service from Oracle Enterprise Manager Fusion Middleware Control. You can also test and monitor your Oracle Service Bus business service from Oracle Service Bus Console. However, you cannot monitor the service and reference metrics for the adapters in Oracle Enterprise Manager Fusion Middleware Control.

Designing SOA Composite Applications

This section describes how design a SOA composite application with the Oracle Sales Cloud adapter in Oracle JDeveloper.

Topics

- [Creating a SOA Composite Application](#)
- [Adding an Adapter to a SOA Composite Application as a Service or Reference](#)
- [Completing Design of a SOA Composite Application](#)

Creating a SOA Composite Application

This section provides an overview of how to create a SOA composite application in which to include the adapter as an exposed service or external reference.

1. Start Oracle JDeveloper.
2. From the **File** menu, select **New > Application**.
3. In the New Gallery dialog, select **SOA Application** from the **Items** list, then click **OK**. The SOA Create SOA Application wizard is displayed.
4. Specify an application name, and click **Next**.
5. Specify a project name, and click **Next**.
6. Select **Composite with BPEL Process**, and click **Finish**.

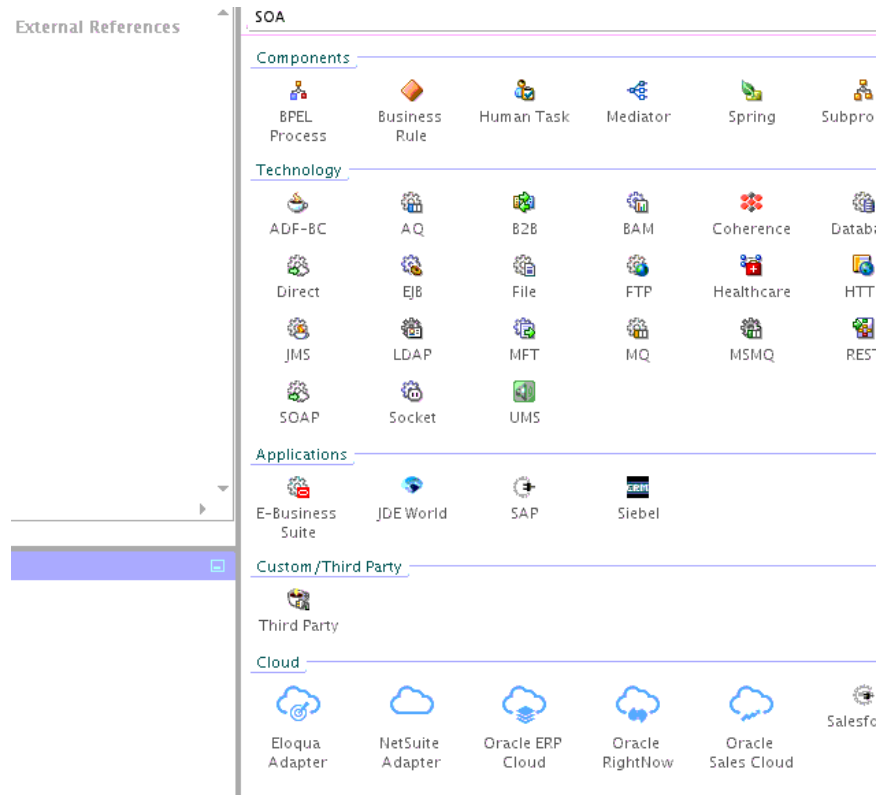
The SOA composite application is displayed for designing in the SOA Composite Editor.

Adding an Adapter to a SOA Composite Application as a Service or Reference

You can add an Oracle Sales Cloud adapter to a SOA composite application as an inbound (source) service to the **Exposed Services** swimlane or as an outbound (target) reference to the **External References** swimlane in Oracle JDeveloper.

1. Go to the Component Palette in your SOA composite application.
2. Go to the **Cloud** section under **Custom/Third Party**.

The adapters are displayed.

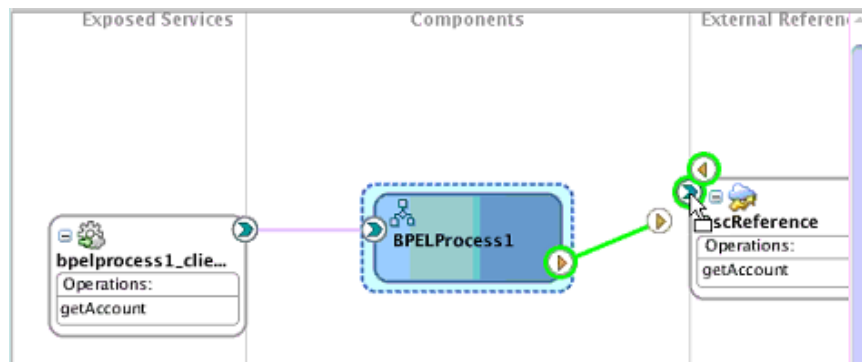


3. Drag the adapter to the appropriate swimlane:
 - a. To create an inbound (source) service, drag the adapter to the **Exposed Services** swimlane, and see the following sections that describe the wizard pages for configuring the adapter:
 - [Configuring Basic Information Properties](#)
 - [Configuring Oracle Cloud Adapter Connection and CSF Key Properties](#)
 - [Configuring Oracle Sales Cloud Source Request Properties](#)
 - [Configuring Oracle Sales Cloud Source Response Properties](#)
 - [Reviewing Configuration Values on the Summary Page](#)
 - b. To create an outbound (target) reference, drag the adapter to the **External References** swimlane, and see the following sections that describe the wizard pages for configuring the adapter.
 - [Configuring Basic Information Properties](#)
 - [Configuring Oracle Cloud Adapter Connection and CSF Key Properties](#)
 - [Configuring Oracle Sales Cloud Target Operations Properties](#)
 - [Reviewing Configuration Values on the Summary Page](#)

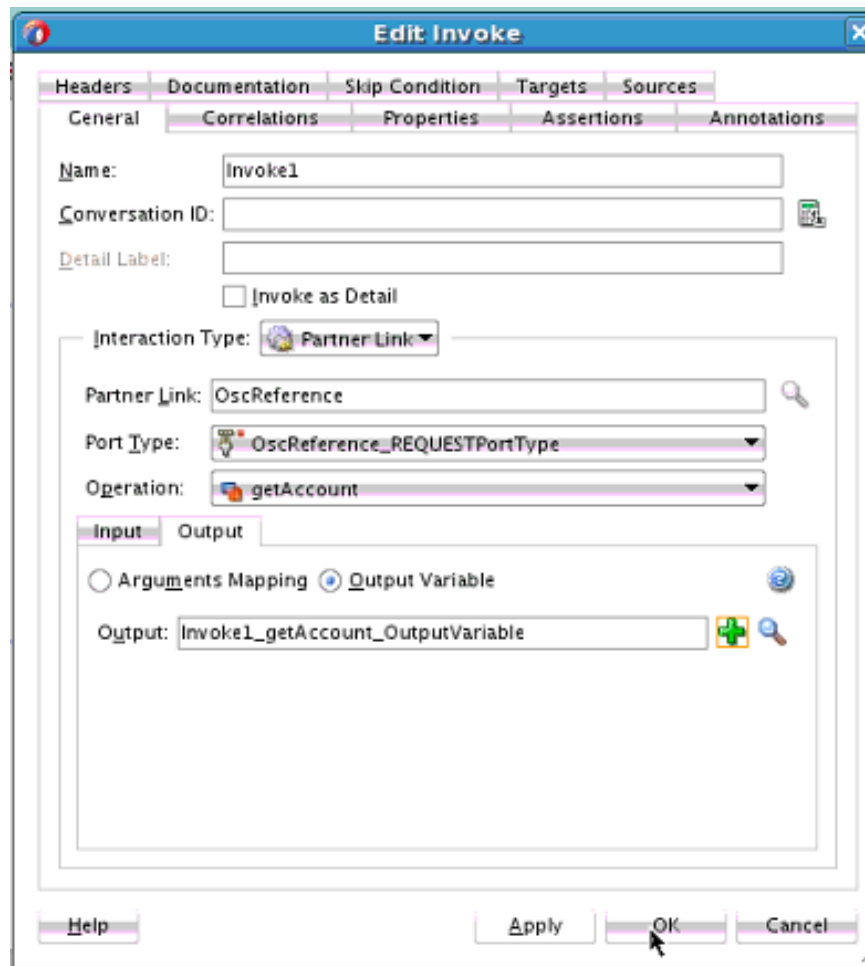
Completing Design of a SOA Composite Application

This section provides an overview of how to complete design of your SOA composite application and deploy the application.

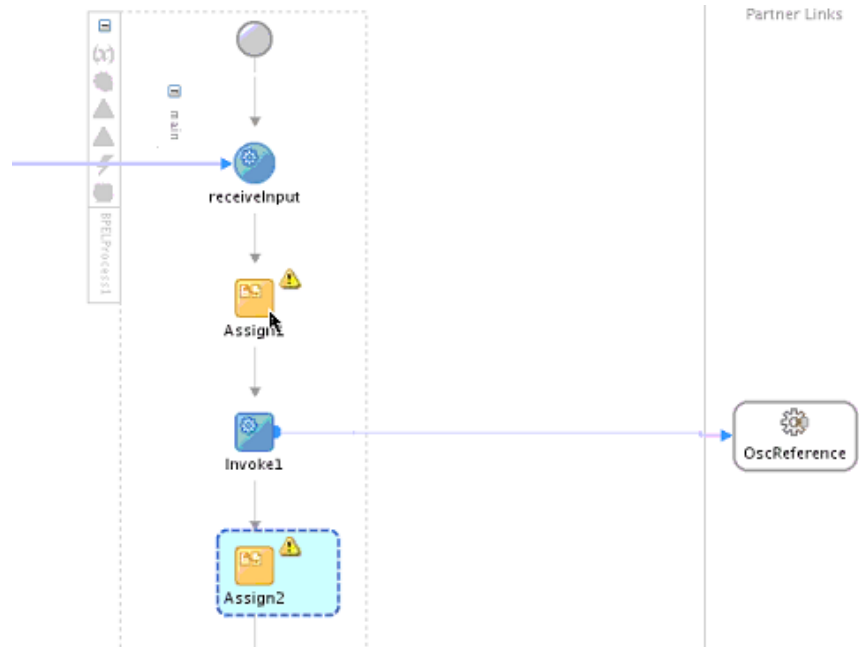
1. Design the remaining contents of your SOA composite application. For example:
 - a. Connect the BPEL process to the adapter. For this example, the BPEL process is connected to the adapter as an external reference.



- b. Design the contents of the BPEL process. For example:
 - i. Double-click the BPEL process.
 - ii. Add and configure an invoke activity to invoke the adapter.

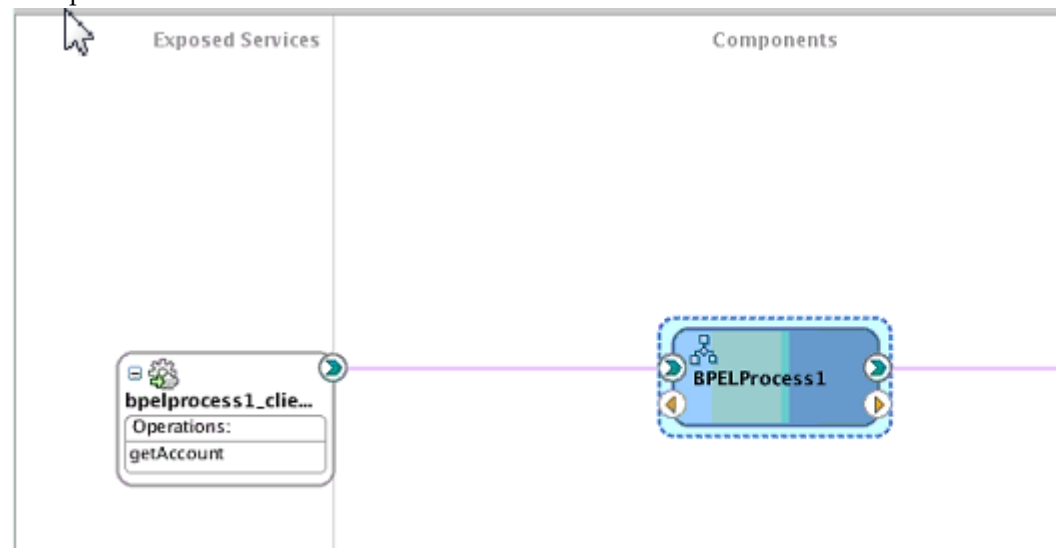


- iii. Add and configure assign activities to copy the contents of one variable to another when sending and receiving messages to and from the adapter.



- iv. Add and configure other activities, as appropriate.

When complete, view the SOA composite application in the SOA Composite Editor.



For specific information about creating and designing SOA composite applications, see *Developing SOA Applications with Oracle SOA Suite*.

2. Deploy the SOA composite application:
 - a. In the navigator, right-click the project and select **Deploy** > *project_name*.
 - b. Follow the steps in the deployment wizard to deploy the SOA composite application to the application server.

Designing Oracle Service Bus Business Services

This section describes how to design an Oracle Service Bus business service with the adapter in Oracle JDeveloper.

Topics

- [Creating an Oracle Service Bus Business Service](#)
- [Adding an Adapter to a Business Service as a Service or Reference](#)
- [Completing Design of an Oracle Service Bus Business Service](#)

Creating an Oracle Service Bus Business Service

This section provides an overview of how to create an Oracle Service Bus business service in which to include the adapter in Oracle JDeveloper.

1. Start Oracle JDeveloper.
2. From the **File** menu, select **New > Application**.
3. In the New Gallery dialog, select **Service Bus Application** from the **Items** list, then click **OK**.
4. Specify an application name, and click **Next**.
5. Specify a project name.
6. Select **Service Bus**, and click **Finish**.

The Oracle Service Bus business service is displayed for designing in the Oracle Service Bus Overview Editor.

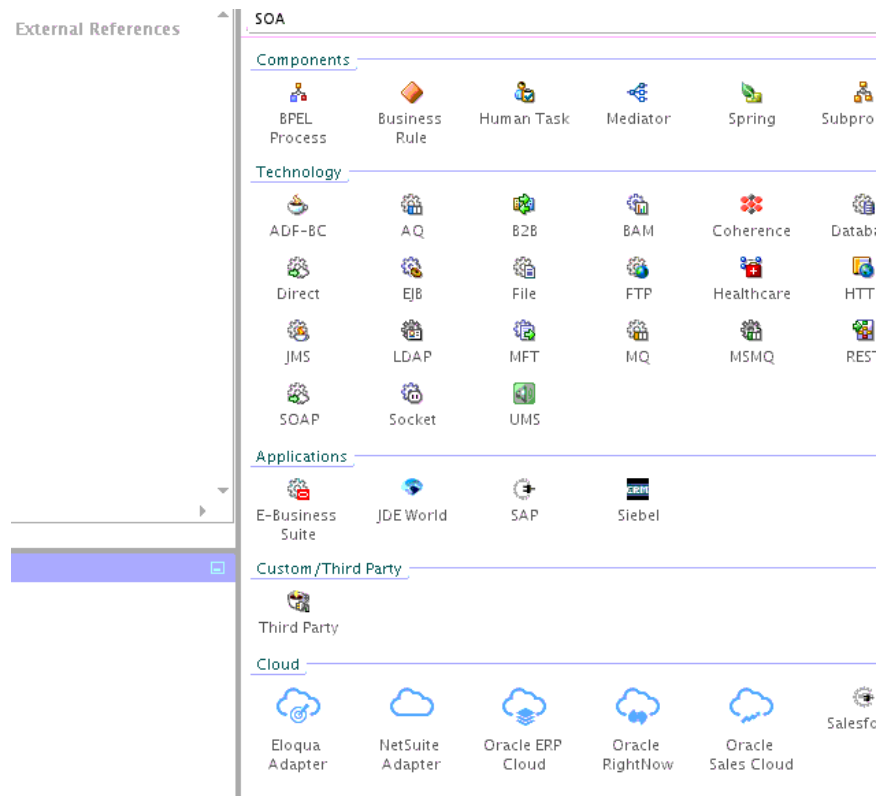
Adding an Adapter to a Business Service as a Service or Reference

You can add the adapter to an Oracle Service Bus business service as an inbound (source) proxy service to the **Proxy Services** swimlane or as an outbound (target) external service to the **External Services** swimlane in Oracle JDeveloper.

Note: If the Import OSB Resource dialog is displayed during adapter configuration, click **Cancel**. You cannot localize the WSDL file.

1. Go to the Component Palette in your Oracle Service Bus business service.
2. Go to the **Cloud** section under **Service Bus**.

The adapters are displayed.



3. Drag the adapter to the appropriate swimlane:
 - a. To create an inbound (source) proxy service, drag the adapter to the **Proxy Services** swimlane, and see the following sections that describe the wizard pages for configuring the adapter:
 - [Configuring Basic Information Properties](#)
 - [Configuring Oracle Cloud Adapter Connection and CSF Key Properties](#)
 - [Configuring Oracle Sales Cloud Source Request Properties](#)
 - [Configuring Oracle Sales Cloud Source Response Configuration Properties](#)
 - [Reviewing Configuration Values on the Summary Page](#)
 - b. To create an outbound (target) external service, drag the adapter to the **External Services** swimlane, and see the following sections that describe the wizard pages for configuring the adapter:
 - [Configuring Basic Information Properties](#)
 - [Configuring Oracle Cloud Adapter Connection and CSF Key Properties](#)
 - [Configuring Oracle Sales Cloud Target Operations Properties](#)
 - [Reviewing Configuration Values on the Summary Page](#)

Completing Design of an Oracle Service Bus Business Service

This section provides an overview of how to complete design of your Oracle Service Bus business service and deploy the application.

1. Design the contents of your Oracle Service Bus business service. For example, to configure an Oracle Service Bus proxy service in your business service:
 - a. In the Oracle Service Bus Overview Editor, right-click the **Pipeline/Split Joins** lane and select **Insert > Pipeline**.

The Create Pipeline Service dialog is displayed.

- b. Enter a name for the pipeline and select the project location, then click **Next**
- c. Select **WSDL** as the **Service Type**.
- d. To the right of the **WSDL** selection, click the **Browse** icon to select the WSDL.
- e. Select **Application**.
- f. Expand **Resource Chooser** and select the WSDL file, then click **OK**.
- g. Ensure that **Expose as a Proxy Service** is selected.
- h. From the **Proxy Transport** list, select **http**, then click **Finish**.

The **Pipeline** component is displayed in the Oracle Service Bus Overview Editor.

- i. Connect the external service to the **Pipeline** component.

For more information about creating and designing an Oracle Service Bus business service, see *Developing Services with Oracle Service Bus*.

2. Open the pipeline that shows the default routing.
3. Verify the service and corresponding operation are displayed in the **Routing Properties** tab at the bottom of the dialog.

The outbound project is ready for deployment.

4. Deploy the business service.
 - a. Select the project, then select **Deploy to Service Bus Server**.
 - b. Follow the steps in the deployment wizard.

Configuring Oracle Sales Cloud Properties

The Oracle Sales Cloud adapter enables you to create integrations with an Oracle Sales Cloud application.

The following sections describe the wizard pages that guide you through configuration of the Oracle Sales Cloud adapter as a source and target in an integration.

Topics

- [Configuring Basic Information Properties](#)
- [Configuring Oracle Cloud Adapter Connection and CSF Key Properties](#)
- [Configuring Oracle Sales Cloud Source Request Configuration Properties](#)
- [Configuring Oracle Sales Cloud Source Response Configuration Properties](#)
- [Configuring Oracle Sales Cloud Target Operation Properties](#)
- [Reviewing Configuration Values on the Summary Page](#)

For more information about Oracle Sales Cloud, see [Oracle Sales Cloud](#).

Configuring Basic Information Properties

You can enter a name and description on the Basic Info page of each source and target adapter in your integration.

Topics

- [What You Can Do from the Basic Info Page](#)
- [What You See on the Basic Info Page](#)

What You Can Do from the Basic Info Page

You can specify the following values on the Basic Info page. The Basic Info page is the initial wizard page that is displayed whenever you drag an adapter to the trigger (source) or invoke (target) area supported by your adapter.

- Specify a meaningful name.
- Specify a description of the responsibilities.

What You See on the Basic Info Page

The following table describes the key information on the Basic Info page.

| Element | Description |
|---|---|
| What do you want to call your endpoint? | Provide a meaningful name so that others can understand the responsibilities of this connection. You can include English alphabetic characters, numbers, underscores, and dashes in the name. You cannot include the following: <ul style="list-style-type: none">• Blank spaces (for example, My Inbound Connection)• Special characters (for example, #;83& or righ(t)now4)• Multibyte characters |
| What does this endpoint do? | Enter an optional description of the connection's responsibilities. For example: This connection receives an inbound request to synchronize account information with the cloud application. |

Configuring Oracle Cloud Adapter Connection and CSF Key Properties

Enter the Oracle Cloud adapter configuration connectivity and Credential Store Framework (CSF) key values for your integration.

Topics

- [What You Can Do from the Oracle Cloud Adapter Connection Page](#)
- [What You See on the Oracle Cloud Adapter Connection Page](#)
- [What You Can Do from the Oracle Cloud Adapter CSF Key Page](#)
- [What You See on the Oracle Cloud Adapter CSF Key Page](#)

What You Can Do from the Oracle Cloud Adapter Connection Page

You can specify the following connection values for the Oracle Cloud adapter.

- Specify the WSDL URL for some adapters. If you are configuring the Oracle Eloqua Cloud adapter, no WSDL is required.
- Specify the security policy.
- Create the authentication key. A key created for one direction (for example, outbound) is also available for selection in the other direction (for example, inbound).

What You See on the Oracle Cloud Adapter Connection Page

The following table describes the key information on the Oracle Cloud adapter Connection page.

| Element | Description |
|--------------------|---|
| WSDL URL | <p>Note: This field is not displayed for the Oracle Eloqua Cloud adapter.</p> <p>Specify the WSDL. The WSDL is used to build integrations specific to your instance. You can also select the WSDL from a file system or another source by choosing the browser icon next to the WSDL URL field. Click File System at the top of the dialog, then browse for the WSDL.</p> |
| Security Policy | <p>Select the security policy appropriate to your environment (for example, USERNAME_PASSWORD_TOKEN).</p> <ul style="list-style-type: none"> The wizard shows all policies, including those that may not be applicable. To make a correct selection, you must have a knowledge of policies. For example, you cannot select a SAML-based policy because the identity is not propagated. The policies you apply to the cloud adapter are unique to the cloud adapter and do not impact other endpoints in the composite. |
| Authentication Key | <p>Select the CSF authentication key.</p> <ul style="list-style-type: none"> Add: Click to create a new authentication key. You must specify the key name, user name, and password. Edit: Click to edit an authentication key. Delete: Click to delete an authentication key. |
| Test | Click to validate the authentication key. |

What You Can Do from the Oracle Cloud Adapter CSF Key Page

You can specify the following CSF key values for the Oracle Cloud adapter.

- CSF key name
- User name and password
- If you are configuring the Oracle NetSuite Cloud adapter only, you must specify an email account and role.
- If you are configuring the Oracle Eloqua Cloud adapter only, you must specify a company name.

What You See on the Oracle Cloud Adapter CSF Key Page

The following table describes the key information on the Oracle Cloud adapter CSF Key page.

| Element | Description |
|--|---|
| CSF Key Name | Specify the CSF key to enable runtime injection of credentials. The adapter uses the CSF to retrieve the username and password required for authentication with the application (for example, the Oracle Sales Cloud or Oracle ERP application). This key identifies your login credentials during design-time. |
| Company Name (Oracle Eloqua Cloud adapter only) | Note: This field is only displayed for the Oracle Eloqua Cloud adapter. Specify the Oracle Eloqua company name. |
| Email , Account and Role | Note: This field is only displayed for the Oracle NetSuite Cloud adapter. Specify the email account and role. |
| User Name | Enter the user name for connecting to your application (for example, the Oracle Sales Cloud or Oracle ERP application). Your administrator provides you with user credentials. |
| Password | Enter the password for connecting to your application. |
| Re-enter Password | Re-enter the same password a second time. |

Configuring Oracle Sales Cloud Source Request Properties

Enter the Oracle Sales Cloud connection source request values for your integration. The values you specify start the integration.

Topics

- [What You Can Do from the Oracle Sales Cloud Source Request Page](#)
- [What You See on the Oracle Sales Cloud Source Request Page](#)

What You Can Do from the Oracle Sales Cloud Source Request Page

You can select the following source request values for the Oracle Sales Cloud application.

Select the specific type to receive as a request from Oracle Sales Cloud. Your ability to select either a business object or event subscription is based on the content of the

WSDL file (for business objects) or event catalog URL (for event subscriptions) you specified during Oracle Sales Cloud adapter configuration.

- Select to receive a business object as a request from Oracle Sales Cloud. This selection invokes the integration.
- Select to receive an event subscription raised by the Oracle Sales Cloud application as a request from Oracle Sales Cloud. This selection invokes the integration.

What You See on the Oracle Sales Cloud Source Request Page

The following table describes the key information on the Oracle Sales Cloud adapter source Request page.

| Element | Description |
|--|--|
| Configure a Request | Select the request type appropriate to your integration. The fields that are displayed below are based on the request type that you select. <ul style="list-style-type: none"> • With Business Objects: Select to display a list of business objects. • With Business Events: Select to display a list of event subscriptions |
| Select a Business Object (is displayed if With Business Objects is selected) | Select the business object from the Oracle Sales Cloud application to receive as a request that starts the integration. |
| Business Event For Subscription (is displayed if With Business Events is selected) | Select the event subscription from the Oracle Sales Cloud application to which to subscribe. This event is received as a request that starts the integration. |
| Filter Expr for <i>Business_Event_Name</i> (is displayed if With Business Events is selected) | Enter an event condition filter expression. A filter expression specifies that the contents (payload or headers) of a message be analyzed before any event subscription is sent. For example, you can apply a filter expression that specifies that an event subscription be sent only if the message includes a customer ID. When the expression logic is satisfied, the event is accepted for delivery to the integration. |
| Filter by object name or Filter By Event Name | Type the initial letters of the name to filter the display of business objects or event subscriptions. |

Configuring Oracle Sales Cloud Source Response Properties

Enter the Oracle Sales Cloud source response values for your integration.

Topics

- [What You Can Do from the Oracle Sales Cloud Source Response Page](#)
- [What You See on the Oracle Sales Cloud Source Response Page](#)

What You Can Do from the Oracle Sales Cloud Trigger Response Page

You can configure the operation and business object that comprise the response type for Oracle Sales Cloud.

- **Immediate (synchronous) response:** A response business object is immediately returned as output. You select **Immediate** as the response type on the Response page and select the business object as part of the response to the client.
- **No response is required:** You select **None** on the Response page because a response is not required.

What You See on the Oracle Sales Cloud Trigger Response Page

Select the business object for the integration to send as a response document to the Oracle Sales Cloud application.

The following types of responses are available.

- **Immediate:** A synchronous response is required (See [Table 5-1](#) for instructions)
- **None:** No response is required (See [Table 5-2](#) for instructions)

The following table describes the fields available if an immediate (synchronous) response is required.

Table 5-1 Response Type — Immediate (Synchronous) Response is Required

| Element | Description |
|------------------------------|---|
| Response Type | Select Immediate for the Oracle Sales Cloud application to wait until a response is received from the integration. This is also known as the request and response message exchange pattern. This is the default selection. |
| Filter by object name | Type the initial letters to filter the display of business objects. |

Table 5-1 (Cont.) Response Type — Immediate (Synchronous) Response is Required

| Element | Description |
|--------------------------|--|
| Select a Business Object | Select the business object to receive from the Oracle Sales Cloud application as a response. You can filter the display of business objects by typing the initial letters of business objects in the Filter by object name field. A description of the selected business object is displayed below this list. |

The following table describes the fields available if no response is required.

Table 5-2 None — No Response is Required

| Element | Description |
|--------------------------|---|
| Response Type | Select None . |
| Select a Business Object | If you select None , this section is hidden. |

Configuring Oracle Sales Cloud Target Operation Properties

Enter the Oracle Sales Cloud target operation values for your integration.

Topics

- [What You Can Do from the Oracle Sales Cloud Target Operations Page](#)
- [What You See on the Oracle Sales Cloud Target Operations Page](#)

What You Can Do from the Oracle Sales Cloud Target Operations Page

You can configure the following target operations values for Oracle Sales Cloud.

- Browse for and select a business object or service.
- Select the operation to perform on the business object or service.

What You See on the Oracle Sales Cloud Target Operations Page

The following table describes the key information on the Oracle Sales Cloud target Operations page.

| Element | Description |
|--|--|
| Browse by | Select to browse by business object or service. There is a one-to-one correspondence between the business object and service. The service acts on the business document. <ul style="list-style-type: none"> • Business Objects: Select to browse a list of available business objects. • Services: Select to browse a list of available business services. |
| Object Filter Name | Type the initial letters to filter the display of business objects. |
| Business Objects | Select the business object or service to use. |
| Select the operation to perform on the business object or service | Select the operation to perform on the selected business object or service. |
| Life Cycle | Displays the state of the selected business object or service. Deprecated indicates the business document is nearing the end of use and must be used with caution. |
| Description | Displays a description of the selected business object or service. |

Reviewing Configuration Values on the Summary Page

You can review the specified adapter configuration values on the Summary page.

Topics

- [What You Can Do from the Summary Page](#)
- [What You See on the Summary Page](#)

What You Can Do from the Summary Page

You can review source or target configuration details from the Summary page. The Summary page is the final wizard page for each adapter after you have completed your configuration.

- View the configuration details you defined for the source or target adapter. For example, if you have defined an inbound source adapter with a request business object and immediate response business object, specific details about this configuration are displayed on the Summary page.
- Click **Done** if you want to save your configuration details.

-
- Click a specific tab in the left panel or click **Back** to access a specific page to update your configuration definitions.
 - Click **Cancel** to cancel your configuration details.

What You See on the Summary Page

The following table describes the key information on the Summary page.

| Element | Description |
|---------|---|
| Summary | <p>Displays a summary of the source or target configuration values you defined on previous pages of the wizard.</p> <p>For adapters for which a generated XSD file is provided, click the XSD link to view a read-only version of the file.</p> <p>To return to a previous page to update any values, click the appropriate tab in the left panel or click Back.</p> |

Managing Applications

This section describes how to manage and monitor an Oracle SOA Suite or Oracle Service Bus application that uses the adapter from Oracle Enterprise Manager Fusion Middleware Control or Oracle Service Bus Console.

Topics

- [Managing the Application in Oracle Enterprise Manager Fusion Middleware Control](#)
- [Testing Oracle Service Bus Projects from Oracle Service Bus Console](#)

Managing the Application in Oracle Enterprise Manager Fusion Middleware Control

You manage the SOA composite application or Oracle Service Bus business service that includes your adapter in Oracle Enterprise Manager Fusion Middleware Control.

1. Log in to Oracle Enterprise Manager Fusion Middleware Control.
2. In the navigator, expand the tree to display your SOA composite application or Oracle Service Bus business service project (for this example, a SOA composite application is selected).
3. Select the SOA composite application.
4. Click **Test**.

The Test Web Service page is displayed.

5. Complete the fields on the page to initiate a test of your composite.
6. Click **Test Web Service**.

Invocation results are displayed.

7. Click **Launch Flow Trace** to view the flow trace of the SOA composite application, including flow details about the adapter.

For more information about monitoring applications from Oracle Enterprise Manager Fusion Middleware Control, see *Administering Oracle SOA Suite and Oracle Business Process Management Suite* and *Administering Oracle Service Bus*.

Testing Oracle Service Bus Business Services from Oracle Service Bus Console

You can test Oracle Service Bus business service projects from Oracle Service Bus Console.

1. Log in to Oracle Service Bus Console.
2. In the navigator under **All Projects**, open the project to test.
3. In the navigator, click the business service for that project.
4. Click the **Launch Test Console** (green arrow button) to test the outbound endpoint.

This opens a window that displays the proxy service and the operation to test.

5. Provide the input and click **Execute**.

This sends the payload to the Oracle Cloud application. The response is displayed under the **Response Document** section.

For more information about testing Oracle Service Bus business service projects, see *Administering Oracle Service Bus*.

Troubleshooting and Error Handling

This section describes how to troubleshoot and handle errors with the Oracle Sales Cloud adapter.

Topic

- [Avoiding SSL Exceptions in Oracle JDeveloper When Connecting to the Event URL Using the CSF Key](#)
- [Connection to Oracle Sales Cloud Inbound Events URL Fails Using the CSF Key](#)
- [Adding Credential Details to the JCA file Before Event-Based Composite Deployment to the Server](#)

Avoiding SSL Exceptions in Oracle JDeveloper When Connecting to the Event URL Using the CSF Key

When you define the CSF key while creating an event-based Oracle Sales Cloud connection in Oracle JDeveloper, you can receive an SSL exception error when you click the **Test** button. To avoid this issue, perform the following steps.

1. Open the `$JDEV_HOME/bin/jdev.conf` file.
2. Add the following:

```
AddVMOption -Dsun.security.ssl.allowUnsafeRenegotiation=true
AddVMOption -Dhttps.protocols=TLSv1,SSLv3
```

3. Restart Oracle JDeveloper.

Connection to Oracle Sales Cloud Inbound Events URL Fails Using the CSF Key

When you define the CSF key while creating an inbound event-based Oracle Sales Cloud connection in Oracle JDeveloper, you can receive the following SSL exception error when you click the **Test** button.

```
Unable to establish a secure connection to
https://hostname.us.oracle.com:10614/fndAppCoreServices/ServiceCatalogService?wsdl.
SSL protocol related exception occurred.
Mar 14, 2016 9:54:51 PM oracle.cloud.adapter.api.util.DefaultLoggerService
logSevere
SEVERE: oracle.j2ee.ws.wsdl.LocalizedWSDLException: WSDLException:
faultCode=PARSER_ERROR: Failed to read wsdl file at:
"https://hostname.us.oracle.com:10614/fndAppCoreServices/ServiceCatalogService?
wsdl", caused by: javax.net.ssl.SSLException.:
    javax.net.ssl.SSLException:
Received fatal alert: close_notify
```

```

at oracle.j2ee.ws.wsdL.xml.WSDLReaderImpl.readWSDL(WSDLReaderImpl.java:411)
at oracle.j2ee.ws.wsdL.xml.WSDLReaderImpl.readWSDL(WSDLReaderImpl.java:728)
at oracle.j2ee.ws.wsdL.xml.WSDLReaderImpl.readWSDL(WSDLReaderImpl.java:706)
at
oracle.tip.tools.ide.adapters.cloud.impl.service.DefaultWSDLHelperService.getDefinitionFromURL(DefaultWSDLHelperService.java:58)
at
oracle.tip.tools.ide.adapters.cloud.impl.service.DefaultWSDLHelperService.getEndpointAddressFromWSDL(DefaultWSDLHelperService.java:70)
at
. . .
. . .
. . .

```

To avoid this issue, perform the following steps.

1. Open the `$JDEV_HOME/bin/jdev.conf` file.

2. Add the following:

```
AddVMOption -Djdk.tls.client.protocols=TLSv1
```

3. Restart Oracle JDeveloper.
4. Open the `setDomainEnv.sh` runtime file.
5. Update the following property:

```
-Djdk.tls.client.protocols=TLSv1
```

Adding Credential Details to the JCA file Before Event-Based Composite Deployment to the Server

While designing the Oracle Sales Cloud adapter event-based service, the credential details must be populated in the JCA file. If the credential details are not populated in the JCA file, the event-based composite fails during deployment.

```

<Nov 30, 2015 5:53:43 PM IST> <Error> <oracle.soa.adapter> <BEA-000000>
<JCABinding=> OSCEvent Error while performing endpoint Activation:
javax.resource.ResourceException:
oracle.cloud.connector.api.CloudInvocationException:
oracle.cloud.connector.api.CloudInvocationException:
oracle.cloud.connector.api.CloudInvocationException: Error: 401 : Cannot get
the subscription for the id
. . .
. . .

```

To avoid this issue, perform the following steps.

1. Update the exposed service-side JCA file with the following details:

```

<property name="csfkey" value="csfkey"/>
<property name="csfMap" value="oracle.wsm.security"/>

```