

Oracle® Fusion Middleware

Creating Schemas with the Repository Creation Utility

12c (12.2.1)

E58101-01

October 2015

Documentation for database and system administrators that describes how to create database schemas for Oracle Fusion Middleware products.

Copyright © 2015, Oracle and/or its affiliates. All rights reserved.

Primary Author: Phil Stubbs

This software and related documentation are provided under a license agreement containing restrictions on use and disclosure and are protected by intellectual property laws. Except as expressly permitted in your license agreement or allowed by law, you may not use, copy, reproduce, translate, broadcast, modify, license, transmit, distribute, exhibit, perform, publish, or display any part, in any form, or by any means. Reverse engineering, disassembly, or decompilation of this software, unless required by law for interoperability, is prohibited.

The information contained herein is subject to change without notice and is not warranted to be error-free. If you find any errors, please report them to us in writing.

If this is software or related documentation that is delivered to the U.S. Government or anyone licensing it on behalf of the U.S. Government, then the following notice is applicable:

U.S. GOVERNMENT END USERS: Oracle programs, including any operating system, integrated software, any programs installed on the hardware, and/or documentation, delivered to U.S. Government end users are "commercial computer software" pursuant to the applicable Federal Acquisition Regulation and agency-specific supplemental regulations. As such, use, duplication, disclosure, modification, and adaptation of the programs, including any operating system, integrated software, any programs installed on the hardware, and/or documentation, shall be subject to license terms and license restrictions applicable to the programs. No other rights are granted to the U.S. Government.

This software or hardware is developed for general use in a variety of information management applications. It is not developed or intended for use in any inherently dangerous applications, including applications that may create a risk of personal injury. If you use this software or hardware in dangerous applications, then you shall be responsible to take all appropriate fail-safe, backup, redundancy, and other measures to ensure its safe use. Oracle Corporation and its affiliates disclaim any liability for any damages caused by use of this software or hardware in dangerous applications.

Oracle and Java are registered trademarks of Oracle and/or its affiliates. Other names may be trademarks of their respective owners.

Intel and Intel Xeon are trademarks or registered trademarks of Intel Corporation. All SPARC trademarks are used under license and are trademarks or registered trademarks of SPARC International, Inc. AMD, Opteron, the AMD logo, and the AMD Opteron logo are trademarks or registered trademarks of Advanced Micro Devices. UNIX is a registered trademark of The Open Group.

This software or hardware and documentation may provide access to or information about content, products, and services from third parties. Oracle Corporation and its affiliates are not responsible for and expressly disclaim all warranties of any kind with respect to third-party content, products, and services unless otherwise set forth in an applicable agreement between you and Oracle. Oracle Corporation and its affiliates will not be responsible for any loss, costs, or damages incurred due to your access to or use of third-party content, products, or services, except as set forth in an applicable agreement between you and Oracle.

Contents

Preface	vii
Intended Audience	vii
Documentation Accessibility	vii
Related Documents.....	vii
Conventions.....	vii
What's New in This Guide.....	ix
New and Changed Features for Release 12c (12.2.1).....	ix
Other Significant Changes in this Document for Release 12c (12.2.1)	ix
1 Understanding Repository Creation Utility	
1.1 Verifying RCU System and Database Requirements	1-1
1.1.1 RCU Supported Platforms	1-1
1.1.2 Finding a Certified Database	1-1
1.1.3 Database Requirements for RCU	1-1
1.1.4 Additional Requirements for IBM DB2 Databases.....	1-2
1.2 Preparing for Schema Creation.....	1-2
1.2.1 Understanding System Load and Product Load	1-3
1.2.2 Granting Permissions to Users for Querying System Load Objects	1-4
1.2.3 Understanding Custom Prefixes	1-4
1.2.4 Understanding the Service Table Schema	1-5
1.2.5 Planning Your Schema Creation	1-5
1.2.6 About Integrating Components Using Declarative XML.....	1-8
1.3 Using RCU with Java Access Bridge (Windows Only)	1-8
1.3.1 Install Java Access Bridge.....	1-8
1.3.2 Configure RCU to Use Java Access Bridge.....	1-9
2 Obtaining and Running Repository Creation Utility	
2.1 Obtaining RCU	2-1
2.2 Starting RCU.....	2-1
2.3 Creating Schemas.....	2-2

2.3.1	Creating Schemas as a User with Full SYS or SYSDBA Privileges	2-2
2.3.2	Creating Schemas as a User With Limited Database Privileges.....	2-4
2.3.3	Verifying Schema Version Numbers	2-6
2.4	Dropping Schemas.....	2-7
2.4.1	About Dropping Shared Tablespaces.....	2-8
2.4.2	Dropping Schemas and Deleting Datafiles (Windows Only)	2-9
3	Running Repository Creation Utility from the Command Line	
3.1	Command Line Syntax and Parameters.....	3-1
3.1.1	RCU Modes Available from the Command Line	3-2
3.1.2	RCU Operations Available from the Command Line.....	3-2
3.1.3	RCU Command Line Parameters.....	3-3
3.2	Using the -silent Command	3-7
3.2.1	Using a Wallet to Store Passwords	3-8
3.3	Using the -interactive Command	3-9
3.4	Using Response Files.....	3-11
3.4.1	Understanding Response Files	3-12
3.4.2	Creating a RCU Response File from the Graphical Interface.....	3-12
3.4.3	Creating a RCU Response File from the Command Line.....	3-12
3.4.4	Performing RCU Operations Using a Response File.....	3-13
3.5	Creating a Repository from the Command Line.....	3-14
3.6	Generating a System Load Script From the Command Line.....	3-14
3.7	Loading Data Into the Repository From the Command Line	3-15
3.8	Dropping a Repository from the Command Line.....	3-16
3.9	Generating a List of Components in an Oracle Home from the Command Line	3-16
3.10	RCU Environment Variables.....	3-16
A	Understanding Repository Creation Utility Screens	
A.1	Welcome.....	A-2
A.2	Create Repository	A-3
A.2.1	Create Repository	A-3
A.2.2	Drop Repository	A-4
A.3	Database Connection Details	A-5
A.3.1	Connection Credentials for Oracle Databases and Oracle Databases with Edition-Based Redefinition.....	A-6
A.3.2	Connection Credentials for MySQL Databases	A-7
A.3.3	Connection Credentials for Microsoft SQL Server Databases	A-7
A.3.4	Connection Credentials for IBM DB2 Databases	A-7
A.4	Select Components (for Create Operation)	A-7
A.5	Select Components (for Drop Operation)	A-10
A.6	Schema Passwords	A-11
A.7	Custom Variables.....	A-12
A.7.1	Custom Variables for Oracle Data Integrator	A-12

A.7.2	Custom Variables for Oracle SOA Suite	A-14
A.7.3	Custom Variable for Oracle WebCenter Portal Analytics.....	A-15
A.8	Map Tablespaces.....	A-16
A.8.1	Default Tablespace Mappings	A-17
A.8.2	Changing Default and Temporary Tablespaces	A-17
A.8.3	Viewing and Changing Additional Tablespaces	A-18
A.8.4	Managing Tablespaces and Datafiles	A-18
A.8.5	Encrypting Tablespaces.....	A-20
A.9	Summary (for Create Operation)	A-20
A.10	Summary (for Drop Operation).....	A-22
A.11	Completion Summary (for Create Operation)	A-24
A.12	Completion Summary (for Drop Operation).....	A-25
B	Understanding Repository Creation Utility Schemas, IDs, and Tablespaces	
B.1	Repository Creation Utility Schemas, IDs, and Tablespaces	B-1
C	Extending Repository Creation Utility to Configure Custom Application Repositories	
C.1	RCU Integration Options.....	C-1
C.1.1	RCU JDBC Engine Compliant SQL*Plus Scripts	C-1
C.1.2	Pure JDBC Scripts	C-2
C.1.3	SQL*Plus Scripts	C-2
C.1.4	External Processes	C-3
C.1.5	Java Code Using JavaAction.....	C-3
C.2	RCU Configuration Files.....	C-4
C.2.1	XML DTDs Defined by RCU.....	C-4
C.2.2	Component Repository Configuration File	C-8
C.2.3	Component List Configuration File.....	C-15
C.2.4	Soft-Prerequisite Support	C-27
C.2.5	Default Tablespaces Configuration File	C-27
C.3	RCU Script Writing Guidelines	C-28
C.3.1	Guidelines for RCU JDBC Engine Compliant SQL*Plus Scripts	C-28
C.3.2	Guidelines for Pure JDBC Scripts.....	C-29
C.3.3	Guidelines for SQL*Plus Scripts.....	C-29
C.3.4	Guidelines for SQL Server-Based Scripts.....	C-29
D	Troubleshooting Repository Creation Utility	
D.1	General Troubleshooting Tips	D-1
D.2	RCU Log Files.....	D-1
D.3	Need More Help?.....	D-3

Preface

The *Creating Schemas with the Repository Creation Utility* book contains overview information and usage instructions for Oracle Repository Creation Utility (RCU).

Intended Audience

This guide is intended for users who are installing Oracle Fusion Middleware products and are comfortable running some system administration operations, such as creating users and groups, adding users to groups, and installing operating system patches on the computer where Oracle Fusion Middleware products will be installed. Users on UNIX systems need root access to run some scripts.

Documentation Accessibility

For information about Oracle's commitment to accessibility, visit the Oracle Accessibility Program website at <http://www.oracle.com/pls/topic/lookup?ctx=acc&id=docacc>.

Access to Oracle Support

Oracle customers that have purchased support have access to electronic support through My Oracle Support. For information, visit <http://www.oracle.com/pls/topic/lookup?ctx=acc&id=info> or visit <http://www.oracle.com/pls/topic/lookup?ctx=acc&id=trs> if you are hearing impaired.

Related Documents

For additional information, see the following manuals:

- *Planning an Installation of Oracle Fusion Middleware*
This document contains important information about planning and preparing for Oracle Fusion Middleware product installations.
- *Installing and Configuring the Oracle Fusion Middleware Infrastructure*
The Repository Creation Utility is included with the Oracle Fusion Middleware Infrastructure distribution.

Conventions

The following text conventions are used in this document:

Convention	Meaning
boldface	Boldface type indicates graphical user interface elements associated with an action, or terms defined in text or the glossary.
<i>italic</i>	Italic type indicates book titles, emphasis, or placeholder variables for which you supply particular values.
monospace	Monospace type indicates commands within a paragraph, URLs, code in examples, text that appears on the screen, or text that you enter.

What's New in This Guide

The following topics introduce the new and changed features of the Repository Creation Utility and other significant changes that are described in this guide, and provide pointers to additional information. This document is the new edition of the formerly titled *Oracle Fusion Middleware Repository Creation Utility User's Guide*.

New and Changed Features for Release 12c (12.2.1)

Repository Creation Utility 12c (12.2.1) includes the following new and changed schema creation features.

- If Transparent Data Encryption (TDE) is enabled in an Oracle database, RCU provides an option on the command line and in the graphical interface to create encrypted tablespaces.

For more information, see [Encrypting Tablespaces](#).

- In 12c (12.1.3), RCU used `ORACLE_HOME/oracle_common/rcu/log/logdir.date_timestamp/rcu.log` as the default log location. In 12c (12.2.1), log files are now written (by default) to the `RCUdate_timestamp_random_number\logs` directory inside the temporary directory on your system.

For more information, see [RCU Log Files](#).

- RCU operations can be performed using a response file, which allows you to pass all valid RCU command-line parameters to RCU via a text file.

For more information, see [Using Response Files](#).

- A wallet can be used in silent mode to store and provide password credentials to RCU rather than directly entering passwords on the command line.

For information on running RCU from the command line, see [Using the -silent Command](#).

- A silent RCU operation was introduced to generate a list of component IDs for a given Oracle home.

For more information, see [Generating a List of Components in an Oracle Home from the Command Line](#).

Other Significant Changes in this Document for Release 12c (12.2.1)

For 12c (12.2.1), this guide has been updated in several ways. Following are the sections that have been added or changed:

- Added a section to describe how to create encrypted tablespaces with RCU if TDE (Transparent Data Encryption) is enabled in the database (Oracle or Oracle EBR). See [Encrypting Tablespaces](#).
- Added a section to describe how to generate and use a response file to perform a RCU operation. See [Using Response Files](#).
- Added a section to describe how to generate a list of component IDs for a given Oracle home from the command line. See [Generating a List of Components in an Oracle Home from the Command Line](#).
- Modified the RCU default log location. For example, on UNIX operating systems, the main RCU log (`rcu.log`) and component log files are now written to the `/tmp/RCUdate_timestamp_random_number/logs` directory by default. See [RCU Log Files](#).

Understanding Repository Creation Utility

This chapter introduces you to the concepts and features you should be familiar with before using the Repository Creation Utility (RCU).

Many of the Oracle Fusion Middleware components require the existence of schemas in a database prior to installation. These schemas are created and loaded in your database using the Repository Creation Utility (RCU).

This chapter contains the following content:

- [Verifying RCU System and Database Requirements](#)
- [Preparing for Schema Creation](#)
- [Using RCU with Java Access Bridge \(Windows Only\)](#)

1.1 Verifying RCU System and Database Requirements

This section contains links to important information about supported platforms for RCU, certified databases, and database configuration information. Read this information carefully before you obtain and run RCU.

- [RCU Supported Platforms](#)
- [Finding a Certified Database](#)
- [Database Requirements for RCU](#)
- [Additional Requirements for IBM DB2 Databases](#)

1.1.1 RCU Supported Platforms

To see the platforms on which you can run RCU, review the "RCU Supported Platforms" section in the *Oracle Fusion Middleware System Requirements and Specifications* document.

1.1.2 Finding a Certified Database

For a list of certified databases that can be used with RCU, refer to the certification document for your release, located on the *Oracle Fusion Middleware Supported System Configurations* page.

1.1.3 Database Requirements for RCU

Before you begin using RCU, review the "Repository Creation Utility (RCU) Requirements" section in the *Oracle Fusion Middleware System Requirements and Specifications* document.

This section contains important information about general and component-specific database requirements that should be met before you run RCU.

Note that not all schemas are supported on all databases. Make sure you have read the information in this section carefully so that you configure a certified database that supports the schemas you need for your Fusion Middleware components.

1.1.4 Additional Requirements for IBM DB2 Databases

In addition to the typical space and configuration database requirements, IBM DB2 databases also have the following special requirements:

- On IBM DB2 databases running on Linux operating systems, there is a limitation with regards to the length of the schema names.
- One database operating system user must be created for each schema that is created in an IBM DB2 database.

For example, if you plan to create a schema named `DEV_STB` using RCU, then the operating system user must be named `dev_stb` (all lowercase letters).

You can create the operating system user by running the following command as `root` (this example creates the operating system user `dev_stb` and assigns the provided password to the user):

```
/usr/sbin/useradd dev_stb -p password -d /scratch/dev_stb
```

You can then set the password of the user (for example, `dev_stb`) by running the following commands as `root`:

```
passwd -u dev_stb
```

```
passwd dev_stb
```

Refer to your system documentation for more information.

For more information about RCU prerequisites for IBM DB2 databases, refer to the *Oracle Fusion Middleware System Requirements and Specifications* document.

1.2 Preparing for Schema Creation

This section contains important information and concepts regarding schema creation and organization.

The following topics are covered:

- [Understanding System Load and Product Load](#)
- [Granting Permissions to Users for Querying System Load Objects](#)
- [Understanding Custom Prefixes](#)
- [Understanding the Service Table Schema](#)
- [Planning Your Schema Creation](#)
- [About Integrating Components Using Declarative XML](#)

1.2.1 Understanding System Load and Product Load

Schema creation in RCU is performed in multiple phases; each phase requires a different level of access to your database.

- **System Load Phase**

During the system load phase, RCU will create the necessary tablespaces and schemas and also the `schema_version_registry`, if it is not already present. One entry for each component will be created in `schema_version_registry`, and the entry will have the appropriate access and status set to "LOADED" in the `schema_version_registry` table.

These actions must be performed by someone with SYS or SYSDBA privileges; authentication credentials must be provided on the [Database Connection Details](#) screen when running RCU.

If you do not have the necessary privileges, you can select **Prepare Scripts for System Load** on the [Create Repository](#) screen. This will generate a SQL script containing all the same SQL statements and blocks that would have been called if RCU were to execute the actions for the selected components. After the script is generated, a user with the necessary SYS or SYSDBA privileges can execute the script to complete the system load phase.

After the system load phase is complete, any user can then run RCU again to complete the schema creation by performing the product load phase.

Note:

If you need to generate the script for system load, you can only create schemas on Oracle and Oracle EBR databases; the system load script is not supported on any other database.

If you are performing the system load with full SYS or SYSDBA privileges, then you can create the schemas on any certified database.

- **Product Load Phase**

During the product load phase, RCU will create procedures, functions, tables, indexes and other objects within schemas and run any action that does not require DBA access. Any non DBA user or the REGISTRYOWNER user can be used for this step.

Before performing the product load phase, the user must be granted the following:

```
grant REGISTRYACCESS to user;
grant STBROLE to user;
```

After the product load phase is complete, the status for each component will change from 'LOADED' to 'VALID' in the `schema_version_registry`.

- **Optional Post-Product Load Phase**

This optional step is needed for components that must execute product load scripts requiring DBA privileges.

This step is required for the following components:

- Audit Services (IAU)

- Oracle Enterprise Scheduler (ESS)

1.2.2 Granting Permissions to Users for Querying System Load Objects

If you want to give a user with limited privileges the ability to query the system load objects, you must grant the user the following before they can query the system load:

Note:

This user will be used for connecting to the system for queries, but the generated scripts from the system load phase must be run by someone with DBA privileges.

```
grant select_catalog_role to user;
grant select any dictionary to user;
grant create session to user;
grant select on schema_version_registry to user;
```

Note:

You may encounter a "Table or view does not exist" error message when you execute the last command; this can be safely ignored.

After performing the system load, grant the following to the same user in order for them to perform data load:

```
grant REGISTRYACCESS to user;
grant STBROLE to user;
```

1.2.3 Understanding Custom Prefixes

Schemas in your database can be grouped together using custom prefixes.

Note:

For important information regarding custom prefixes in IBM DB2 databases, refer to "Size Limit for Schema Prefixes" in the [Oracle Fusion Middleware System Requirements and Specifications](#) document.

The prefix is prepended to and separated from the schema name with an underscore (_) character, as shown below:

prefix_schemaname

Prefixes:

- Can only contain alpha-numeric characters; no spaces or other special characters.
- Must begin with a letter.
- Must not be longer than 12 characters

The default prefix used by RCU is DEV; if DEV has already been used, then RCU will default to DEV1, then DEV2, and so on. Prefixes are used to create and organize logical

groups of schemas. For example, you may want to create a test version of the Metadata Services (schema name MDS) called TEST_MDS; then, when are ready for your production version, you can create a second version of the schema called PROD_MDS. Both TEST_MDS and PROD_MDS may reside on the same or separate databases.

You are only allowed to use a prefix once per schema within a single database. For example, if you had a version of the Metadata Services schema called DEV_MDS, then you can not use the DEV prefix again to create another version of the Metadata Services schema (for example, DEV_MDS2).

If you want to create another version of the schema using the same prefix, you must first drop the existing schema and then create the schema again.

The mapping between the prefixes and schemas is maintained in `schema_version_registry`.

1.2.4 Understanding the Service Table Schema

The Service Table schema is a special schema that is installed automatically whenever RCU is run. The service table stores basic schema configuration information (for example, schema prefixes and passwords) that can then be accessed and used by other Oracle Fusion Middleware components during domain creation.

For example, the configuration wizard has screens which you can configure to use the data stored in the service table when RCU was run. After you provide the service table schema credentials, the data from the service table is used to populate the fields on the screen, thus saving you the need to manually populate that data yourself.

Once created, service tables are used to wire Oracle Fusion Middleware components together. For more information, see "Cross-Component Wiring" in *Administering Oracle Fusion Middleware*.

1.2.5 Planning Your Schema Creation

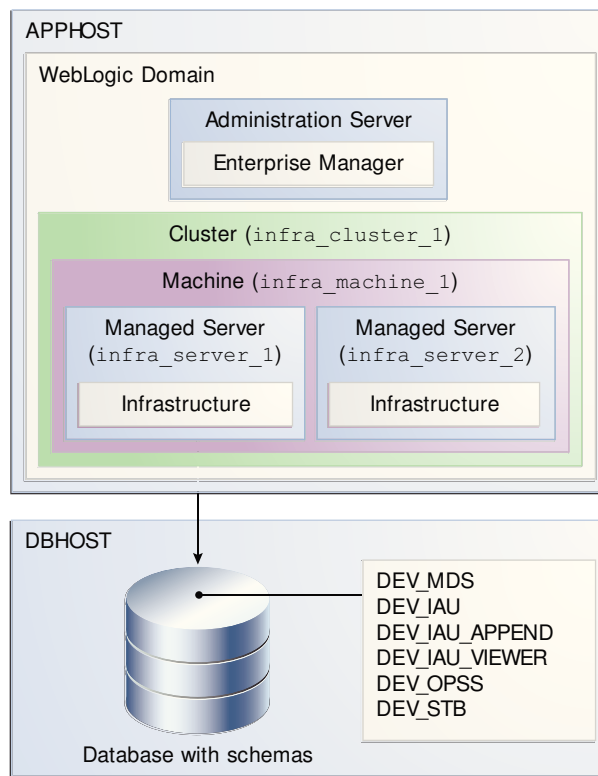
This topic provides examples to help you understand how schemas can be grouped together and distributed depending on your specific environment.

The following examples are provided:

- [Organizing Schemas on a Single Database for a Single Domain](#)
- [Organizing Schemas on Multiple Databases for a Single Domain](#)
- [Organizing Schemas on a Single Database for Multiple Domains](#)
- [Organizing Schemas on Multiple Databases for Multiple Domains](#)

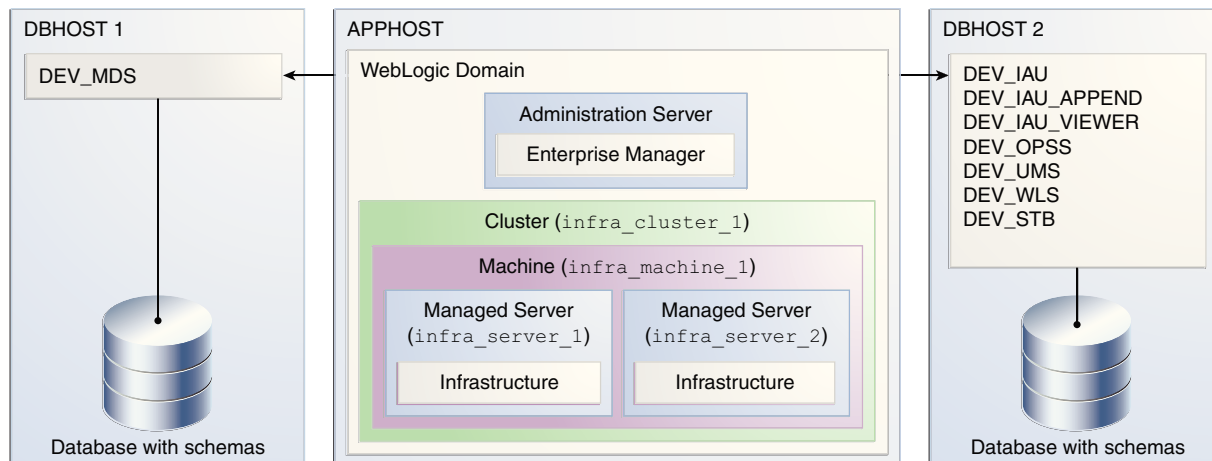
1.2.5.1 Organizing Schemas on a Single Database for a Single Domain

[Figure 1-1](#) shows a set of schemas in a single database being used by a single WebLogic domain. This is the simplest scenario in which all schemas using the DEV prefix are grouped together and used by this single WebLogic domain.

Figure 1-1 Schemas on a Single Database for a Single Domain

1.2.5.2 Organizing Schemas on Multiple Databases for a Single Domain

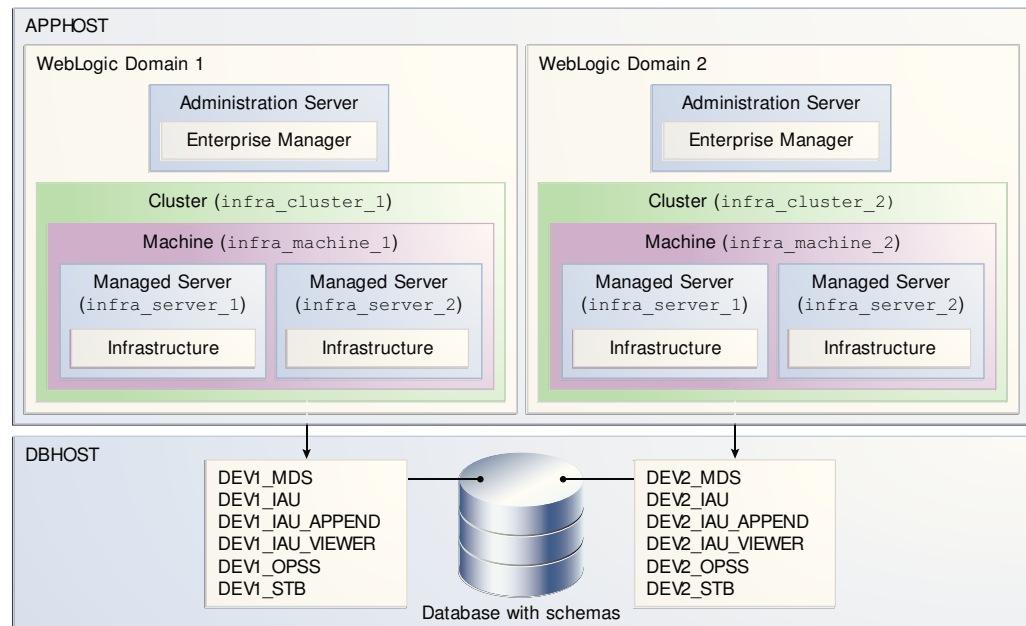
Figure 1-2 shows a single set of schemas distributed on multiple databases being used by a single WebLogic domain.

Figure 1-2 Schemas on Multiple Databases for a Single Domain

Note that the same schema prefix (in this case, DEV) can be used to group these related schemas together, even across multiple databases.

1.2.5.3 Organizing Schemas on a Single Database for Multiple Domains

Figure 1-3 shows how schemas on a single database should be grouped for multiple domains.

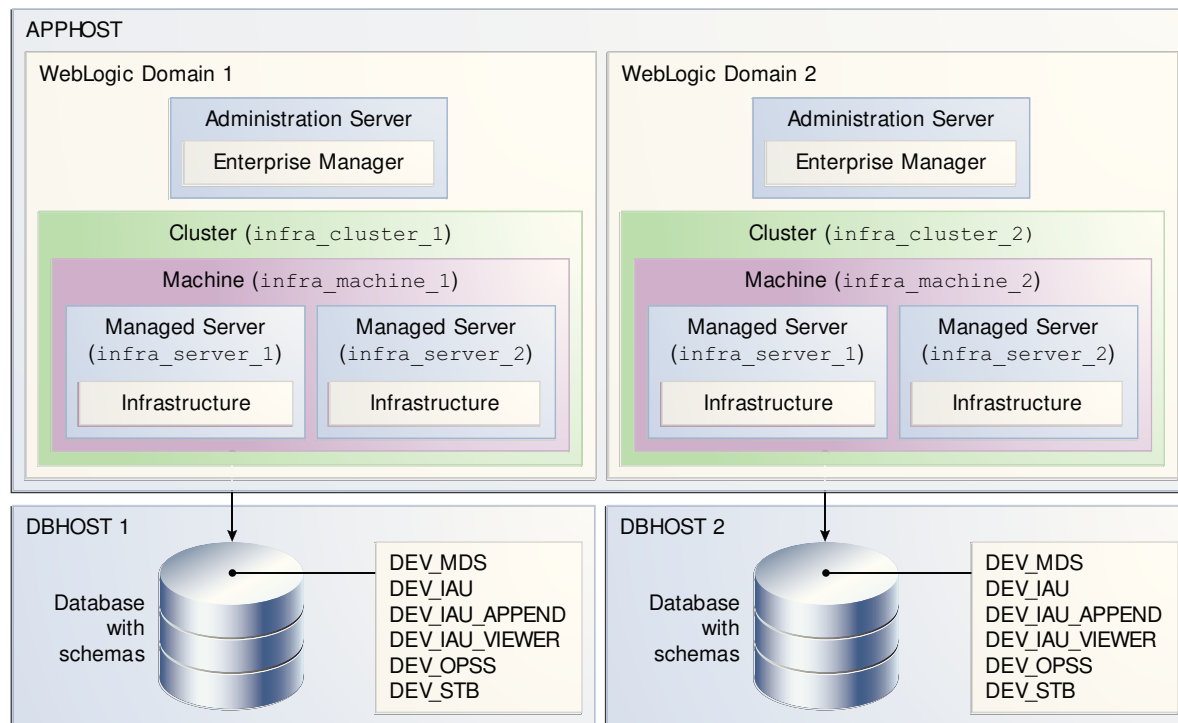
Figure 1-3 Schemas on a Single Database for Multiple Domains

In this example, the prefixes are grouped together by using DEV1 for one set of schemas (used by WebLogic Domain 1), and DEV2 for the second set (used by WebLogic Domain 2).

It is not possible to share a single set of schemas across multiple domains; each domain must have its own set of schemas.

1.2.5.4 Organizing Schemas on Multiple Databases for Multiple Domains

Figure 1-4 shows one way to organize schemas on multiple databases for use with multiple WebLogic domains.

Figure 1-4 Schemas on Multiple Databases for Multiple Domains

Note that in this scenario it is possible to have separate domains on the same host use schemas with the same name and prefix (DEV), since the schemas are located on different databases.

1.2.6 About Integrating Components Using Declarative XML

RCU provides extensibility with XML DTDs. Using these DTDs, component owners can integrate their components and prerequisites with RCU by providing a configuration file that adheres to the provided DTD.

For more information, refer to [Extending Repository Creation Utility to Configure Custom Application Repositories](#).

1.3 Using RCU with Java Access Bridge (Windows Only)

Java Access Bridge enables assistive technologies, such as JAWS screen reader, to read Java applications running on the Windows platform. Assistive technologies can read Java-based interfaces, such as Oracle Universal Installer and Oracle Enterprise Manager.

For more information, see the following topics:

- [Install Java Access Bridge](#)
- [Configure RCU to Use Java Access Bridge](#)

1.3.1 Install Java Access Bridge

To install Java Access Bridge:

1. Download Java Access Bridge from the following URL:

<http://java.sun.com/javase/technologies/accessibility/accessbridge/>

2. Install Java Access Bridge.
3. Copy the `access-bridge.jar` and `jaccess-1_4.jar` from your installation location to the `jre\lib\ext` directory.
4. Copy the `WindowsAccessBridge.dll`, `JavaAccessBridge.dll`, and `JAWTAccessBridge.dll` files from your installation location to the `jre\bin` directory.
5. Copy the `accessibility.properties` file to the `jre\lib` directory.

1.3.2 Configure RCU to Use Java Access Bridge

To configure RCU to use Java Access Bridge after you complete the installation, set the system variable `ORACLE_OEM_CLASSPATH` to point to the installed Java Access Bridge files:

1. Display **System** in the Control Panel.
2. Select the **Advanced** tab.
3. Click the **New** button under the System Variable list. The New System Variable dialog appears.
4. In the Variable Name field, enter `ORACLE_OEM_CLASSPATH`.
5. In the Variable Value field, enter the full path to `access-bridge.jar` and `jaccess-1_4.jar`.

Use a semicolon to separate the two paths. Do not use quotes or character spaces.

6. Click **OK**.

Obtaining and Running Repository Creation Utility

This chapter contains instructions for obtaining and running the Repository Creation Utility (RCU).

This chapter contains the following sections:

- [Obtaining RCU](#)
- [Starting RCU](#)
- [Creating Schemas](#)
- [Dropping Schemas](#)

2.1 Obtaining RCU

In 12c (12.2.1), RCU is available with the Oracle Fusion Middleware Infrastructure distribution. For information about how to install this software and obtain RCU, see *Installing and Configuring the Oracle Fusion Middleware Infrastructure*.

2.2 Starting RCU

After Oracle Fusion Middleware Infrastructure is installed, start RCU from the `ORACLE_HOME/oracle_common/bin` directory.

Note:

If you are running RCU using a non-English database, you will need to set the following language environment variables: `LANG`, `LC_ALL`, and `NLS_LANG`. Use the environment commands that are appropriate for your environment.

For example, for UNIX operating systems running `csh` enter the following:

```
setenv LANG en_US.UTF8
setenv LC_ALL $LANG
setenv NLS_LANG american_america
```

It is generally a good practice to set the `JAVA_HOME` environment variable so it references the location of the JDK software you will be using to run the Repository Creation Utility (RCU). This ensures that RCU is using the proper version of the JDK software.

On Linux operating systems:

```
cd ORACLE_HOME/oracle_common/bin
./rcu
```

On Windows operating systems:

```
cd ORACLE_HOME\oracle_common\bin
rcu.bat
```

RCU provides a command line interface in situations where Xserver is not available or you have access to telnet terminals without display capabilities. The command line interface also allows you to embed RCU from command line scripts or with some Oracle Fusion Middleware components (for example, Enterprise Manager).

For more information using the CLI, see [Running Repository Creation Utility from the Command Line](#).

2.3 Creating Schemas

This section contains the following topics:

- [Creating Schemas as a User with Full SYS or SYSDBA Privileges](#)
- [Creating Schemas as a User With Limited Database Privileges](#)
- [Verifying Schema Version Numbers](#)

2.3.1 Creating Schemas as a User with Full SYS or SYSDBA Privileges

If you are a user with full SYS or SYSDBA privileges, and are able to provide valid authentication credentials for database access, follow the instructions in this topic to create schemas.

Click on the screen name to see more detailed information for that screen. Unless otherwise noted, click **Next** to continue to the next screen.

Table 2-1 *Schema Creation Steps for Full-Privilege Users*

Screen	Description
Welcome	This screen introduces you to RCU.
Create Repository	Select Create Repository , then select System Load and Product Load . If you do not have full SYS or SYSDBA privileges on the database, select Prepare Scripts for System Load and follow the schema creation instructions in Creating Schemas as a User With Limited Database Privileges .
Database Connection Details	Specify your database connection credentials. Remember that if you are creating schemas on an IBM DB2 database, you must have already created one operating system user for each schema you want to create. See Additional Requirements for IBM DB2 Databases for more information. Click Next when you have specified your credentials. A separate dialog window will appear while RCU checks connectivity and some database prerequisites. When the database checking has passed without errors, click OK to dismiss the dialog window and go to the next screen.

Screen	Description
Select Components (for Create Operation)	<p>Select the components for which you want to create schemas, and specify a prefix to group them together.</p> <p>You must remember the prefix and schema names for the components you are installing; you will need this information during the configuration phase of your product installation. Oracle recommends that you write these values down.</p>
Schema Passwords	<p>Specify the passwords for your schema owners.</p> <p>You must remember the passwords you enter on this screen; you will need this information during the configuration phase of your product installation. Oracle recommends that you write these values down.</p>
Custom Variables	<p>Custom variables are required by some products for additional product configuration information. This screen appears only if you selected Oracle Data Integrator, SOA Suite, or WebCenter Portal — Analytics on the Select Components screen. You can select Oracle Data Integrator, SOA Suite, or WebCenter Portal — Analytics only if the Oracle home in which RCU was started contains Oracle Data Integrator, Oracle SOA Suite, or Oracle WebCenter Portal, respectively.</p> <ul style="list-style-type: none"> • If Oracle Data Integrator is selected, the Custom Variables for Oracle Data Integrator will be visible. • If SOA Suite is selected, the Custom Variables for Oracle SOA Suite will be visible. • If WebCenter Portal - Analytics is selected, the Custom Variable for Oracle WebCenter Portal Analytics will be visible. • If Oracle Data Integrator, SOA Suite, and WebCenter Portal - Analytics are selected, the custom variables for Oracle Data Integrator, Oracle SOA Suite, and Oracle WebCenter Portal Analytics will be visible on this screen.
Map Tablespaces	<p>Use this screen to configure the desired tablespace mapping for the schemas you want to create.</p> <p>When you click Next, a separate dialog window will appear asking you to confirm that you want to create these tablespaces. Click OK to proceed and dismiss the dialog window.</p> <p>A second dialog window will appear showing the progress of tablespace creation. After this is complete, click OK to dismiss this window and go to the next screen.</p>
Summary (for Create Operation)	<p>Verify the information on this screen, then click Create to begin schema creation.</p>
Completion Summary (for Create Operation)	<p>Review the information on this screen to verify that the operation was completed successfully. Click Close to complete the schema creation and dismiss RCU.</p>

2.3.2 Creating Schemas as a User With Limited Database Privileges

If you are a user without SYS or SYSDBA privileges, or you are unable to provide valid authentication credentials for database access, follow the instructions in this topic to create schemas.

Table 2-2 Schema Creation Steps for Limited-Privilege Users

Screen	Description
Welcome	This screen introduces you to RCU.
Create Repository	Select Create Repository , then select Prepare Scripts for System Load . See Understanding System Load and Product Load for more information about these operations.
Database Connection Details	Specify your database connection credentials. Click Next when you have specified your credentials. A separate dialog window will appear while RCU checks connectivity and some database prerequisites. When the database checking has passed without errors, click OK to dismiss the dialog window and go to the next screen. NOTE: When performing system load and product load separately, RCU will not verify that the database version you are using is supported and certified. For a list of certified databases that can be used with RCU, refer to the certification document for your release, located on the <i>Oracle Fusion Middleware Supported System Configurations</i> page. NOTE: Performing system load and product load separately is only supported on Oracle or Oracle EBR databases.
Select Components (for Create Operation)	Select the components for which you want to create schemas, and specify a prefix to group them together. You must remember the prefix and schema names for the components you are installing; you will need this information during the configuration phase of your product installation. Oracle recommends that you write these values down.
Custom Variables	Custom variables are required by some products for additional product configuration information. This screen appears only if you selected Oracle Data Integrator, SOA Suite, or WebCenter Portal — Analytics on the Select Components screen. You can select Oracle Data Integrator, SOA Suite, or WebCenter Portal — Analytics only if the Oracle home in which RCU was started contains Oracle Data Integrator, Oracle SOA Suite, or Oracle WebCenter Portal, respectively. <ul style="list-style-type: none"> • If Oracle Data Integrator is selected, the Custom Variables for Oracle Data Integrator will be visible. • If SOA Suite is selected, the Custom Variables for Oracle SOA Suite will be visible. • If WebCenter Portal - Analytics is selected, the Custom Variable for Oracle WebCenter Portal Analytics will be visible. • If Oracle Data Integrator, SOA Suite, and WebCenter Portal - Analytics are selected, the custom variables for Oracle Data Integrator, Oracle SOA Suite, and Oracle WebCenter Portal Analytics will be visible on this screen.
Map Tablespaces	Use this screen to configure the desired tablespace mapping for the schemas you want to create.

Screen	Description
Summary (for Create Operation)	<p>Verify the information on this screen, then click Generate to begin script generation.</p> <p>By default, the scripts will be generated in the <code>RCUdate_timestamp_random_number/logs</code> directory inside the temporary directory on your system. For example, on UNIX operating systems, the scripts will be generated in the <code>/tmp/RCUdate_timestamp_random_number/logs</code> directory by default. If you want to specify a different location, click Browse and select a location on your system.</p> <p>The names of the scripts generated are <code>script_systemLoad.sql</code> and <code>script_postDataLoad.sql</code>.</p>
Completion Summary (for Create Operation)	Review the information on this screen to verify that the operation was completed successfully. Click Close to complete the schema creation and dismiss RCU.
N/A	<p>After the scripts are created, someone with SYS or SYSDBA privileges should execute the <code>script_systemLoad.sql</code> script:</p> <ol style="list-style-type: none"> 1. Login to SQL*Plus. 2. Enter the following command to execute the <code>script_systemLoad.sql</code> script (replace the path to the script if you chose to save it in a custom location): <pre>@/tmp/RCUdate_timestamp_random_number/logs/script_systemLoad.sql</pre> 3. While the script is running, the user will be prompted to set the schema password for each schema being created. Specify the passwords as prompted. <p>You will be returned to your system prompt when the script has been executed.</p>
N/A	After the script is executed, start RCU again and perform the product load phase to complete schema creation.
Welcome	This screen introduces you to RCU.
Create Repository	<p>Select Create Repository, then select Perform Product Load.</p> <p>See Understanding System Load and Product Load for more information about these operations.</p>
Database Connection Details	<p>Specify your database connection credentials.</p> <p>Click Next when you have specified your credentials. A separate dialog window will appear while RCU checks connectivity and some database prerequisites. When the database checking has passed without errors, click OK to dismiss the dialog window and go to the next screen.</p>
Select Components (for Create Operation)	<p>From the drop-down list, select the prefix you specified earlier in this procedure. Then, select the components for which you want to perform the product load.</p>

Screen	Description
Schema Passwords	<p>Specify the passwords for your schema owners.</p> <p>You must remember the passwords you enter on this screen; you will need this information during the configuration phase of your product installation. Oracle recommends that you write these values down.</p>
Custom Variables	<p>Custom variables are required by some products for additional product configuration information. This screen appears only if you selected Oracle Data Integrator, SOA Suite, or WebCenter Portal — Analytics on the Select Components screen. You can select Oracle Data Integrator, SOA Suite, or WebCenter Portal — Analytics only if the Oracle home in which RCU was started contains Oracle Data Integrator, Oracle SOA Suite, or Oracle WebCenter Portal, respectively.</p> <ul style="list-style-type: none"> • If Oracle Data Integrator is selected, the Custom Variables for Oracle Data Integrator will be visible. • If SOA Suite is selected, the Custom Variables for Oracle SOA Suite will be visible. • If WebCenter Portal - Analytics is selected, the Custom Variable for Oracle WebCenter Portal Analytics will be visible. • If Oracle Data Integrator, SOA Suite, and WebCenter Portal - Analytics are selected, the custom variables for Oracle Data Integrator, Oracle SOA Suite, and Oracle WebCenter Portal Analytics will be visible on this screen.
Summary (for Create Operation)	<p>Verify the information on this screen, then click Data Load to begin schema creation.</p>
Completion Summary (for Create Operation)	<p>Review the information on this screen to verify that the operation was completed successfully. Click Close to complete the schema creation and dismiss RCU.</p>
N/A	<p>This optional step is needed for components that generate and must execute product load scripts requiring DBA privileges. After the product load phase is complete, someone with SYS or SYSDBA privileges should execute the <code>script_postDataLoad.sql</code> script.</p> <p>This step is needed for the Audit Services (IAU) and Oracle Enterprise Scheduler (ESS) components.</p> <ol style="list-style-type: none"> 1. Login to SQL*Plus. 2. Enter the following command to execute the <code>script_postDataLoad.sql</code> script (replace the path to the script if you chose to save it in a custom location): <pre>@/tmp/RCUdate_timestamp_random_number/logs/script_postDataLoad.sql</pre> <p>You will be returned to your system prompt when the script has been executed.</p>

2.3.3 Verifying Schema Version Numbers

When the schemas are created in your database, RCU creates and maintains a table called `schema_version_registry`. This table contains schema information such as

version number, component name and ID, date of creation and modification, and custom prefix.

To verify that the schemas are installed properly, run the following query after logging in to SQL*Plus:

```
select comp_name, version from schema_version_registry;
```

The `comp_name` argument retrieves the name of the component, and `version` retrieves the version number. For example:

```
SQL> select comp_name, version from schema_version_registry;
```

```
COMP_NAME
```

```
VERSION
```

```
Audit Service
12.2.1.0.0
```

```
Audit Service Append
12.2.1.0.0
```

```
Audit Service Viewer
12.2.1.0.0
```

```
COMP_NAME
```

```
VERSION
```

```
Metadata Services
12.2.1.0.0
```

```
Oracle Platform Security Services
12.2.1.0.0
```

```
Service Table
12.1.3.0.0
```

```
COMP_NAME
```

```
VERSION
```

```
User Messaging Service
12.2.1.0.0
```

```
WebLogic Services
12.2.1.0.0
```

```
8 rows selected.
```

2.4 Dropping Schemas

To drop schemas from the database, start RCU (see [Starting RCU](#)), then follow the instructions in [Table 2-3](#).

Click on the screen name to see more detailed information for that screen. Unless otherwise noted, click **Next** to continue to the next screen.

Table 2-3 RCU Screens and Description for Dropping Schemas

Screen	Instructions and Action Required
Welcome	This screen introduces you to RCU.
Create Repository	Select Drop Repository .
Database Connection Details	Specify the connection details for your database, then click Next . A separate dialog window will appear while RCU checks connectivity and some database prerequisites. When the database checking has passed without errors, click OK to dismiss the dialog window and go to the next screen.
Select Components (for Drop Operation)	Select the prefix and the schemas you want to drop, then click Next . A separate dialog window will appear asking you to verify that you want to drop the selected schemas. Click OK to dismiss this window. A second dialog window appears while RCU checks the prerequisites for the schemas you are dropping. After this is complete, click OK to dismiss this window and go to the next screen.
Custom Variables	Custom variables are required by some products for additional product configuration information. This screen appears only if you selected Oracle Data Integrator, SOA Suite, or WebCenter Portal — Analytics on the Select Components screen. You can select Oracle Data Integrator, SOA Suite, or WebCenter Portal — Analytics only if the Oracle home in which RCU was started contains Oracle Data Integrator, Oracle SOA Suite, or Oracle WebCenter Portal, respectively. <ul style="list-style-type: none"> • If Oracle Data Integrator is selected, the Custom Variables for Oracle Data Integrator will be visible. • If SOA Suite is selected, the Custom Variables for Oracle SOA Suite will be visible. • If WebCenter Portal - Analytics is selected, the Custom Variable for Oracle WebCenter Portal Analytics will be visible. • If Oracle Data Integrator, SOA Suite, and WebCenter Portal - Analytics are selected, the custom variables for Oracle Data Integrator, Oracle SOA Suite, and Oracle WebCenter Portal Analytics will be visible on this screen.
Summary (for Drop Operation)	Review the information on this screen, then click Drop to drop the schemas.
Completion Summary (for Drop Operation)	Note the location of the log files, then click Close to dismiss the screen.

2.4.1 About Dropping Shared Tablespaces

Tablespaces that are shared among multiple schemas will not be dropped. For example, if you created both the Audit Services (for example, DEV_IAU) and Metadata Services (for example, DEV_MDS) schemas, both schemas would use the temporary tablespace DEV_IAS_TEMP (see [Default Tablespace Mappings](#)).

If you then drop the DEV_IAU schema, the DEV_IAS_TEMP tablespace would not be dropped since it is also being used by the DEV_MDS schema.

2.4.2 Dropping Schemas and Deleting Datafiles (Windows Only)

If you used RCU to drop a schema from a Windows-based database, and you want to recreate the dropped schema, you will have to manually delete datafiles that were not automatically removed when the schema was dropped.

Navigate to the `DB_HOME\oradata` directory and manually delete any remaining datafiles before recreating the schema.

Oracle recommends that you check this directory for any remaining datafiles before you attempt to recreate any dropped schema.

Running Repository Creation Utility from the Command Line

This chapter describes how to run RCU from the command line.

The command-line interface (CLI) is necessary for integration with both the Oracle Fusion Middleware installer and Enterprise Manager during application deployment. Additionally, you can use the CLI in cases where Xserver is not configured or if you are using a telnet terminal that does not have proper display capabilities.

This chapter contains the following topics:

- [Command Line Syntax and Parameters](#)
- [Using the -silent Command](#)
- [Using the -interactive Command](#)
- [Using Response Files](#)
- [Creating a Repository from the Command Line](#)
- [Generating a System Load Script From the Command Line](#)
- [Loading Data Into the Repository From the Command Line](#)
- [Dropping a Repository from the Command Line](#)
- [Generating a List of Components in an Oracle Home from the Command Line](#)
- [RCU Environment Variables](#)

3.1 Command Line Syntax and Parameters

The syntax for the RCU command line interface is:

```
rcu mode operation {parameters}
```

There are two modes (-silent and -interactive) and seven operations (-generateResponseFile, -responseFile, -createRepository, -generateScript, -dataLoad, -dropRepository, and -listComponents). So, the command can be written out as follows:

```
rcu [-silent | -interactive] [-generateResponseFile | -responseFile | -createRepository | -generateScript | -dataLoad | -dropRepository | -listComponents] {parameters}
```

The following topics describe each of the modes, operations, and parameters:

- [RCU Modes Available from the Command Line](#)

- [RCU Operations Available from the Command Line](#)
- [RCU Command Line Parameters](#)

3.1.1 RCU Modes Available from the Command Line

This topic lists and describes the RCU modes available from the command line.

Table 3-1 RCU Modes Available from the Command Line

Command	Description
<code>-silent</code>	Run RCU with minimal or no interaction from the command line. For more information, see Using the -silent Command .
<code>-interactive</code>	Run the RCU graphical interface. This is the default if neither <code>-silent</code> nor <code>-interactive</code> is specified. This command (whether specified or not) allows you to pre-populate certain screens with information as specified from the response file or from the command line. You can pre-populate the Create Repository and Database Connection Details screens. For more information, see Using the -interactive Command .

3.1.2 RCU Operations Available from the Command Line

This topic lists and describes the RCU operations available from the command line.

Table 3-2 RCU Operations Available from the Command Line

Command	Description
<code>-generateResponseFile</code>	Run RCU with <code>-silent</code> to generate a RCU response file that contains all valid RCU command line parameters. For more information, see Creating a RCU Response File from the Command Line
<code>-responseFile</code>	Run RCU with either <code>-silent</code> or <code>-interactive</code> to perform a RCU operation using a response file. For more information, see Performing RCU Operations Using a Response File
<code>-createRepository</code>	Run RCU with either <code>-silent</code> or <code>-interactive</code> to create a repository. For more information, see Creating a Repository from the Command Line .
<code>-generateScript</code>	Run RCU with either <code>-silent</code> or <code>-interactive</code> to generate a script for system load. For more information, see Generating a System Load Script From the Command Line .
<code>-dataLoad</code>	Run RCU with either <code>-silent</code> or <code>-interactive</code> to load data into the repository. For more information, see Loading Data Into the Repository From the Command Line .
<code>-dropRepository</code>	Run RCU with either <code>-silent</code> or <code>-interactive</code> to drop a repository. For more information, see Dropping a Repository from the Command Line .
<code>-listComponents</code>	Run RCU with <code>-silent</code> to generate a list of components for a given Oracle home. For more information, see Generating a List of Components in an Oracle Home from the Command Line

3.1.3 RCU Command Line Parameters

This topic lists and describes the various command line parameters. These parameters can be passed to RCU as input by directly entering the parameters on the command line or by using a response file.

Table 3-3 RCU Command Line Parameters and Descriptions

Parameter	Required?	Valid for Which Operation?	Description
-compInfoXMLLocation	No	-createRepository -generateScript -dataLoad -dropRepository	Full path to the location of the ComponentInfo.xml file. The default location is <i>ORACLE_HOME/oracle_common/rcu/config</i> (on UNIX operating systems) or <i>ORACLE_HOME\oracle_common\rcu\config</i> (on Windows operating systems).
-storageXMLLocation	No	-createRepository -generateScript -dataLoad -dropRepository	Full path to the location of the StorageInfo.xml file. The default location is <i>ORACLE_HOME/oracle_common/rcu/config</i> (on UNIX operating systems) or <i>ORACLE_HOME\oracle_common\rcu\config</i> (on Windows operating systems).
-databaseType	No	-createRepository -generateScript -dataLoad -dropRepository	Type of database to which you are connecting. If you are performing the system load and product load concurrently as a user with full DBA privileges, the valid options are ORACLE, SQLSERVER, IBMBD2, MYSQL, or EBR. If you do not have permissions to perform system load and product load concurrently and need to generate a script, you can only use the ORACLE and EBR database types. For more information about system load and product load, see Understanding System Load and Product Load .
-connectString	Yes	-createRepository -generateScript -dataLoad -dropRepository	Credentials for connecting to your database. For Oracle or EBR-enabled databases, use the following format: <i>host:port:sid</i> For all other database types, use: <i>server_name/host:port:database_name</i>
-edition	No	-createRepository -generateScript -dataLoad -dropRepository	Edition name. This is only valid if you specify databaseType=EBR.

Parameter	Required?	Valid for Which Operation?	Description
-dbUser	Yes	-createRepository -generateScript -dataLoad -dropRepository -generateResponseFile	Database user name (for example, the default user name on Oracle databases is SYS). This parameter is required if the -createWallet parameter is provided during the -generateResponseFile operation. RCU uses the database user name as the key/alias to store the database user password when generating wallet. If the -createWallet parameter is not provided, the database user name is optional.
-dbRole	No	-createRepository -generateScript -dataLoad -dropRepository	Database user role (for example, SYSDBA for the SYS user on Oracle databases).
-unicodeSupport	No	-createRepository -dropRepository	Specify Yes or No for unicode support. Default is Yes. This is only valid if you specify databaseType=SQLSERVER.
-skipCleanupOnFailure	No	-createRepository -generateScript -dataLoad	Whether or not you want to skip the schema cleanup if schema creation fails. Valid values are Yes or No. The default is No.
-scriptLocation	No	-generateScript	Specify the location to save the generated script for system load repository.
-useSamePasswordForAllSchemaUsers	No	-createRepository -dataLoad -generateResponseFile	Whether or not you want to use the same password for all schemas. Valid values are true or false. The default is false.
-selectDependentsForComponents	No	-createRepository -generateScript -dataLoad -dropRepository -generateResponseFile	Whether or not you want to have RCU automatically select dependent schemas for your components. Valid values are true or false. The default is false.
-honorOMF	No	-createRepository -generateScript	If value is set to true, RCU creates datafiles using Oracle-Managed Files (OMF) naming format. Valid values are true or false. The default is false.

Parameter	Required?	Valid for Which Operation?	Description
-encryptTablespace	No	-createRepository -generateScript	<p>Whether or not you want to encrypt all new tablespaces that will be created by RCU. This option is valid only if you have TDE (Transparent Data Encryption) enabled in the database (Oracle or Oracle EBR) when you start RCU. TDE tablespace encryption allows you to encrypt sensitive data stored in tablespaces.</p> <p>Valid values are true or false. The default is false. If value is set to true, <i>all new</i> tablespaces created by RCU will be encrypted only if TDE is enabled in the database.</p> <p>Tablespaces that were created before RCU was launched cannot be encrypted using this option.</p>
-skipTablespaceDrop	No	-dropRepository	<p>This parameter allows you to skip dropping tablespaces during the -dropRepository operation.</p> <p>Valid values are Yes or No. Specify Yes to skip tablespace drop. The default is No.</p>
-variables	No	-createRepository -generateScript -dataLoad -dropRepository	<p>Comma separated variables in the format <i>variablename=value</i>. See RCU Environment Variables for a list of RCU environment variables.</p>
-schemaPrefix	No	-createRepository -generateScript -dataLoad -dropRepository -generateResponseFile	<p>Prefix for your schemas. For more information about schema prefixes, refer to Planning Your Schema Creation and Select Components (for Create Operation).</p> <p>This parameter is required if the -createWallet parameter is provided during the -generateResponseFile operation. RCU uses the prefixed schema name as the key/alias to store schema passwords when generating wallet. If the -createWallet parameter is not provided, the schema prefix is optional.</p>

Parameter	Required?	Valid for Which Operation?	Description
-component	Yes	-createRepository -generateScript -dataLoad -dropRepository	<p>ID of the component(s) you want to add or drop. To specify a single component, use the format:</p> <pre>-component component_ID</pre> <p>To specify multiple components, use the format:</p> <pre>-component component_ID -component component_ID</pre> <p>For a list of valid component (schema) IDs, refer to Understanding Repository Creation Utility Schemas, IDs, and Tablespaces. Multiple components are sometimes necessary because of dependencies; for example, you cannot create the Oracle Platform Security Services (OPSS) schema if the Audit Services (IAU) schema does not already exist. In this case, you must specify both schemas:</p> <pre>-component OPSS -component IAU</pre>
-tablespace	No	-createRepository -generateScript	Tablespace name of the component. This tablespace must exist in the database if you are using this option.
-tempTablespace	No	-createRepository -generateScript	TEMP tablespace name of the component. This tablespace must exist in the database if you are using this option.
-createWallet	No	-generateResponseFile	<p>Provide this parameter if you want to create a wallet file to securely store your RCU passwords, such as the database user password, schema passwords, and custom variable passwords.</p> <p>RCU accepts password credentials stored in an Oracle Wallet. That is, you can use the generated wallet later in silent situations to provide your passwords to RCU without having to directly enter passwords on the command line.</p> <p>The wallet will be generated in the same directory as the response file.</p>

Parameter	Required?	Valid for Which Operation?	Description
-walletDir	No	-createRepository -generateScript -dataLoad -dropRepository	<p>Absolute path of wallet directory where your RCU passwords used for creating or dropping schemas are stored. If you choose to use a wallet to provide passwords to RCU, RCU will retrieve the required passwords from the specified directory. This option is valid for silent mode only.</p> <p>The wallet must already exist and contain the required passwords if you are using this option. If the wallet does not contain the required passwords, RCU will prompt you for the missing passwords on the command line.</p> <p>This directory should contain a valid <code>cwallet.sso</code> file. RCU supports auto-login wallets only (password is not needed to open wallet).</p>
-responseFileDir	No	-generateResponseFile	<p>Absolute path of RCU response file directory.</p> <p>If specified, RCU generates a response file named <code>rcuResponseFile.properties</code> in the given directory.</p> <p>If not specified, RCU generates a response file in the <code>\$HOME/.rcu</code> directory by default.</p>
-ComponentList	No	-generateResponseFile	<p>Comma-separated list of component IDs for the components in the Oracle home that you want to add to the response file. To generate a list of valid component IDs for a specific Oracle home, see Generating a List of Components in an Oracle Home from the Command Line.</p> <p>If not specified, all valid components in the Oracle home will be added to the response file by default.</p>

3.2 Using the -silent Command

Specify `-silent` if you want to run RCU with minimal interaction once you have entered the command.

You must specify all mandatory command line parameters in the command. For example:

```
rcu -silent -createRepository -connectString database_connect_string -dbUser -
database_user -component component
```

In this scenario, RCU will prompt you for the database and component schema passwords from the command line. If you specify multiple components, you will be prompted for the passwords in the order in which the components are specified.

Instead of directly entering all the RCU parameters on the command line, you can provide the location and name of a file containing certain input values. This file (called a response file) allows you to provide values for all valid RCU command-line parameters to RCU via a text file. When you run RCU, all values will be read from the response file to create or drop schemas. For more information, see [Using Response Files](#).

If you want to avoid all interaction from the command line, you can create a text file containing all the necessary passwords (one password per line) and then use the `-f` option to pass this password file to RCU. For example, if you create a file called `passwordfile.txt`, you can use the command below:

```
rcu -silent -createRepository -connectString database_connect_string -dbUser -  
database_user -component component1_name -component  
component2_name -f < passwordfile.txt
```

The `passwordfile.txt` file would contain, in order:

```
database_password  
component1_schema_password  
component2_schema_password
```

It is important to make sure that the passwords in the file are specified in the same order as the components on the command line.

Once the installation is complete the password file must be removed. The passwords are maintained in cleartext format and therefore present a security risk if the password file is left in place after installation.

Instead of using a plain text password file, you can create an Oracle Wallet file containing all the necessary passwords and then use the `-walletDir` parameter to pass this file to RCU. For more information, see [Using a Wallet to Store Passwords](#).

3.2.1 Using a Wallet to Store Passwords

If you are running RCU from the command line, password credentials (for example, schema passwords) can be stored and provided to RCU in an Oracle Wallet file.

When you run RCU from the command line, RCU prompts you to enter values for any required passwords by default. To avoid entering passwords on the command line, you can create a wallet file to securely store and encrypt any necessary passwords. You can then pass the wallet to RCU by providing the wallet location with the `walletDir` parameter.

Creating a Wallet Using RCU

A wallet for providing RCU passwords can be generated by RCU as part of response file creation:

- To create a wallet using the RCU graphical interface, see [Creating a RCU Response File from the Graphical Interface](#).
- To create a wallet using the RCU command line interface, see [Creating a RCU Response File from the Command Line](#).

Once the wallet is created, this file can be reused to store and provide passwords for multiple sessions.

Note that RCU only supports auto-login wallets (no password is needed to open a wallet). Password-protected wallets are not supported.

When the wallet is generated by RCU, RCU uses the prefixed schema name as the key/alias for storing schema passwords, which allows you to more easily reuse the same wallet for multiple sessions. For database user password, the alias is the database user name (for example, SYS). If the same password is used for all the schemas, then RCU uses the alias `prefix_COMMON_SCHEMA_PASSWORD` to save the password in the wallet.

Example 3-1 Using the `--walletDir` Parameter

After the wallet is created and contains the necessary passwords, use the `--walletDir` parameter to pass this file to RCU so that you do not have to directly enter your passwords on the command line. Alternatively, the wallet location can be provided to RCU via a response file.

For example:

```
./rcu -silent -createRepository -connectString examplehost.exampledomain.com:
1521:example_sid -dbUser sys -dbRole sysdba
-schemaPrefix DEV -component MDS -component STB -walletDir /home/exampleuser/wallet
```

When you pass the wallet to RCU, RCU expects all the necessary passwords to be in the wallet, which include:

- Database user password
- Schema passwords
- Custom Variable passwords (for Oracle Data Integrator)

In this example, the wallet should contain passwords for the database user (sys), the Metadata Services (MDS) schema, and the Service Table (STB) schema. If a wallet does not contain all the necessary passwords, you will be prompted to enter the missing passwords on the command line.

3.3 Using the -interactive Command

Specify `-interactive` to run the RCU graphical interface.

This is the default if neither `-silent` nor `-interactive` is specified.

You can specify information from the command line that would be populated in the graphical interface to expedite your RCU operation. For example, if you run RCU with the following command:

```
./rcu
```

The [Database Connection Details](#) page contains blank fields, as shown below:

The screenshot shows the 'Repository Creation Utility' window, titled 'Welcome - Step 3 of 8'. The Oracle Fusion Middleware logo is in the top right. A left-hand navigation pane lists the steps: Welcome, Create Repository, Database Connection Details (selected), Select Components, Schema Passwords, Map Tablespaces, Summary, and Completion Summary. The main area is titled 'Database Connection Details' and contains the following fields:

- Database Type:** A dropdown menu set to 'Oracle Database'.
- Host Name:** A text input field. Below it, a note states: 'For RAC database, specify VIP name or one of the Node name as Host name. For SCAN enabled RAC database, specify SCAN host as Host name.'
- Port:** A text input field.
- Service Name:** A text input field.
- Username:** A text input field. Below it, a note states: 'User with DBA or SYSDBA privileges. Example:sys'.
- Password:** A text input field.
- Role:** A dropdown menu set to 'SYSDBA'. Below it, a note states: 'One or more components may require SYSDBA role for the operation to succeed.'

At the bottom of the window, there is a 'Help' button on the left and navigation buttons '< Back', 'Next >', 'Finish', and 'Cancel' on the right.

But if you run RCU with a few parameters from the command line:

```
./rcu -interactive -createRepository -connectString examplehost.exampledomain.com:1521:example_sid -dbUser SYS -component MDS
```

The [Database Connection Details](#) page contains the information supplied from the command line:

Welcome - Step 3 of 8

Repository Creation Utility

ORACLE
FUSION MIDDLEWARE

Database Type: Oracle Database

Host Name: examplehost.exampdomain.com
For RAC database, specify VIP name or one of the Node name as Host name.
For SCAN enabled RAC database, specify SCAN host as Host name.

Port: 1521

Service Name: example_sid

Username: SYS
User with DBA or SYSDBA privileges. Example:sys

Password:

Role: SYSDBA
One or more components may require SYSDBA role for the operation to succeed.

Help < Back Next > Finish Cancel

When you run the RCU graphical interface, you can provide the location and name of a file (called a response file) containing certain input values (for example, database connection details). These are the values that are asked for during a typical session using the graphical interface. The values you enter in the response file can be used to populate certain RCU screens. For more information, see [Using Response Files](#).

3.4 Using Response Files

Before running RCU, you can provide information that is required to perform a specific RCU operation in a response file. For example, you can provide your database connection details, a list of components to be added or dropped, and the schema prefix to RCU via a response file. A response file can be used to automate a RCU session.

When you run RCU using a response file, RCU reads the information provided in the response file to complete the RCU operation.

For more information, see the following topics:

- [Understanding Response Files](#)
- [Creating a RCU Response File from the Graphical Interface](#)
- [Creating a RCU Response File from the Command Line](#)
- [Performing RCU Operations Using a Response File](#)

3.4.1 Understanding Response Files

A response file is a properties file in which all RCU command-line parameters can be provided as input to RCU to perform a RCU operation.

Rather than directly entering the [RCU Command Line Parameters](#) on the command line, you can provide values for these parameters to RCU via a text file. This file can be generated from the RCU graphical interface (using the values you provide in the RCU screens) or from the command line. After you create the response file, the parameters can be modified in a text editor or be used exactly as-is to perform a RCU operation at a later time.

If you choose to run RCU from the command line with a response file, the values you specify in the response file are the values for the RCU parameters that you would normally provide on the command line during a typical silent RCU session. If you choose to run the RCU graphical interface with a response file, the values you specify in the response file are used to pre-populate the fields on certain screens.

3.4.2 Creating a RCU Response File from the Graphical Interface

The **Save Response File** option on the [Summary \(for Create Operation\)](#) or the [Summary \(for Drop Operation\)](#) screen saves the information you provide in the RCU screens to a response file.

After you click the **Save Response File** option, you will be prompted to specify a location for where you want to create this file. By default, RCU saves the response file in the `$HOME/.rcu` directory.

Because the response file needs to contain password information, RCU provides the **Save Passwords in Wallet** option to securely store and encrypt any passwords you provide on the RCU screens in a wallet. You can use the wallet later in silent situations to provide the necessary passwords to RCU so that you do not have to directly enter your passwords on the command line. When you run RCU from the command line, the wallet location can be provided to RCU on the command line or using a response file. If a wallet directory is not provided to RCU, you will be prompted for the required passwords.

3.4.3 Creating a RCU Response File from the Command Line

This topic shows the full syntax for the RCU command line interface to generate a RCU response file.

```
rcu -silent -generateResponseFile
  [-responseFileDir absolute_path_of_response_file_directory]
  [-schemaPrefix schema_prefix]
  [-componentList list_of_component_IDs]
  [-createWallet]
  [-useSamePasswordForAllSchemaUsers [true|false]]
  [-selectDependentsForComponents [true|false]]
  [-dbUser database_username]
```

If the `-createWallet` parameter is provided, then values for `-dbUser` and `-schemaPrefix` are required. Otherwise, the `-dbUser` and `-schemaPrefix` parameters are optional. RCU uses the prefixed schema name and the database user name as the key/alias to store schema passwords and the database user password in the wallet, respectively.

If you provide `-createWallet` and `-useSamePasswordForAllSchemaUsers true` on the command line, then all schema passwords will be set to the same value in wallet.

If the `-createWallet` parameter is provided, RCU will prompt you to enter a value for each password that will be stored in the wallet.

Below is a sample command to generate a RCU response file on a UNIX operating system:

```
./rcu -silent -generateResponseFile -componentList OPSS,IAU -schemaPrefix DEV -
createWallet
-responseFileDir /home/exampleuser/rcu -useSamePasswordForAllSchemaUsers true
-selectDependentsForComponents true -dbUser sys
```

In this example, a response file and wallet are created in the `/home/exampleuser/rcu` directory, and the information provided on the command line (such as the list of components) is added to the response file.

3.4.4 Performing RCU Operations Using a Response File

This topic shows the full syntax for the RCU command line interface to perform a RCU operation using a response file. You use a response file to provide input to RCU to automate a RCU operation from the command line or from the graphical interface.

If you choose to run the graphical interface with a response file, RCU will pre-populate certain RCU screens (such as the [Database Connection Details](#) screen) based on the input values you provide in the response file. If you choose to run RCU from the command line, you can use a response file to provide values for all valid RCU parameters rather than directly entering these parameters on the command line.

The full syntax for the RCU command line interface to perform a RCU operation with a response file is shown below:

```
rcu [-silent|-interactive] -responseFile absolute_path_of_response_file
```

Below is a sample command to automate a silent RCU session using a response file on a UNIX operating system:

```
./rcu -silent -responseFile /home/exampleuser/rcu/rcuResponseFile.properties
```

Note:

- If you provide a value for a parameter on the command line and in the response file, RCU will use the value provided on the command line.
 - Before running RCU, ensure that you have provided the required information in the response file. If some of the mandatory properties in the response file are missing values when you run RCU, RCU will notify you and exit.
 - For connecting to certain databases (for example, SQL Server), the `dbRole` parameter is not normally required when you run RCU. However, when a RCU response file is generated, the `dbRole` parameter is marked as required in the response file by default. As a result, if you are using a response file, the `dbRole` field must not be left blank even if the database role is not required to connect to a database like SQL Server.
-
-

3.5 Creating a Repository from the Command Line

This topic shows the full syntax for the RCU command line interface to create a repository.

```
rcu [-silent | -interactive] -createRepository
    [-compInfoXMLLocation ComponentInfo.xml_file_location]
    [-storageXMLLocation Storage.xml_file_location]
    [-databaseType [ORACLE|EBR]]
    -connectString database_connect_string
    [-edition edition_name]
    -dbUser database_username
    [-dbRole database_user_role]
    [-unicodeSupport [Yes|No]]
    [-skipCleanupOnFailure [true|false]]
    [-useSamePasswordForAllSchemaUsers [true|false]]
    [-selectDependentsForComponents [true|false]]
    [-honorOMF [true|false]]
    [-encryptTablespace [true|false]]
    [-variables variablename=value]
    [-schemaPrefix schema_prefix]
    -component component_ID
    [-tablespace component_tablespace_name]
    [-tempTablespace component_temp_tablespace_name]
    [-walletDir absolute_path_of_wallet_directory]
```

In order to work properly, make sure that the parameters are specified in the same order that they are listed. For example, do not specify the `-compInfoXMLLocation` parameter after the `-component` parameter.

When specifying the `-component`, you must use the correct component IDs, which are listed in [Understanding Repository Creation Utility Schemas, IDs, and Tablespaces](#).

Before you create any schemas, you must be aware of and specify all dependencies for the component you are loading. For example, the SOAINFRA schema depends on the MDS and ORASDPM schemas; if you try to load the SOAINFRA schema without specifying both the MDS and ORASDPM schemas, or if the MDS and ORASDPM schemas do not already exist in the database, RCU will stop before any loading takes place.

Below is a sample command to create the OPSS schema on a UNIX operating system:

```
./rcu -silent -createRepository -databaseType ORACLE -connectString
examplehost.exampledomain.com:1521:exampleSID -dbUser sys
-dbRole sysdba -schemaPrefix TEST -component OPSS -component MDS
```

3.6 Generating a System Load Script From the Command Line

This topic shows the full syntax for the RCU command line interface to generate a system load script.

```
rcu [-silent | -interactive] -generateScript
    [-compInfoXMLLocation ComponentInfo.xml_file_location]
    [-storageXMLLocation Storage.xml_file_location]
    [-databaseType [ORACLE|EBR]]
    -connectString database_connect_string
    [-edition edition_name]
    -dbUser database_username
    [-dbRole database_user_role]
    [-skipCleanupOnFailure [Yes|No]]
    [-scriptLocation script_location]
```

```

[-selectDependentsForComponents [true|false]]
[-honorOMF [true|false]]
[-encryptTablespace [true|false]]
[-variables variablename=value]
[-schemaPrefix schema_prefix]
-component component_ID
[-tablespace component_tablespace_name]
[-tempTablespace component_temp_tablespace_name]
[-walletDir absolute_path_of_wallet_directory]

```

In order to work properly, make sure that the parameters are specified in the same order that they are listed. For example, do not specify the `-compInfoXMLLocation` parameter after the `-component` parameter.

When specifying the `-component`, you must use the correct component IDs, which are listed in [Understanding Repository Creation Utility Schemas, IDs, and Tablespaces](#).

Before you create a script, you must be aware of and specify all component dependencies. For example, the SOAINFRA schema depends on the MDS and ORASDPM schemas; if you specify the SOAINFRA schema without specifying both the MDS and ORASDPM schemas, or if the MDS and ORASDPM schemas do not already exist in the database, RCU will stop before completing the operation.

Below is a sample command to create a system load script on a UNIX operating system:

```

./rcu -silent -generateScript -databaseType ORACLE -connectString
examplehost.exampledomain.com:1521:exampleSID -dbUser sys
-dbRole sysdba -scriptLocation /tmp/RCUdate_timestamp_random_number/logs/ -
schemaPrefix TEST
-component OPSS -component MDS

```

3.7 Loading Data Into the Repository From the Command Line

This topic shows the full syntax for the RCU command line interface to load data into a repository.

```

rcu [-silent | -interactive] -dataLoad
[-compInfoXMLLocation ComponentInfo.xml_file_location]
[-storageXMLLocation Storage.xml_file_location]
[-databaseType [ORACLE|EBR]]
-connectString database_connect_string
[-edition edition_name]
-dbUser database_username
[-dbRole database_user_role]
[-skipCleanupOnFailure [Yes|No]]
[-useSamePasswordForAllSchemaUsers [true|false]]
[-selectDependentsForComponents [true|false]]
[-variables variablename=value]
[-schemaPrefix schema_prefix]
-component component_ID
[-walletDir absolute_path_of_wallet_directory]

```

Below is a sample command to perform a data load on a UNIX operating system:

```

./rcu -silent -dataLoad -databaseType ORACLE -connectString
examplehost.exampledomain.com:1521:exampleSID -dbUser sys -dbRole
sysdba -schemaPrefix TEST -component OPSS -component MDS

```

3.8 Dropping a Repository from the Command Line

This topic shows the full syntax for the RCU command line interface to drop a repository.

```
rcu [-silent | -interactive] -dropRepository
    [-compInfoXMLLocation ComponentInfo.xml_file_location]
    [-storageXMLLocation Storage.xml_file_location]
    [-databaseType {ORACLE|EBR}]
    -connectString database_connect_string
    [-edition edition_name]
    -dbUser database_username
    [-dbRole database_user_role]
    [-unicodeSupport {Yes|No}]
    [-selectDependentsForComponents {true|false}]
    [-skipTablespaceDrop {Yes|No}]
    [-variables variablename=value]
    [-schemaPrefix schema_prefix]
    -component component_ID
    [-walletDir absolute_path_of_wallet_directory]
```

In order to work properly, make sure that the parameters are specified in the same order that they are listed. For example, do not specify the `-compInfoXMLLocation` parameter after the `-component` parameter.

You must also be aware of schema dependencies when dropping schemas (see [Understanding Repository Creation Utility Schemas, IDs, and Tablespaces](#)). For example, several schemas require the MDS schema to be present; if you choose to drop the MDS schema, then all the schemas that require the MDS schema will stop working.

Below is a sample command to drop the OPSS schema on a UNIX operating system:

```
./rcu -silent -dropRepository -databaseType ORACLE -connectString
examplehost.exampledomain.com:1521:exampleSID -dbUser sys -dbRole
sysdba -schemaPrefix TEST -component OPSS
```

3.9 Generating a List of Components in an Oracle Home from the Command Line

This topic shows the full syntax for the RCU command line interface to generate a list of valid components that are available in a given Oracle home.

```
rcu -silent -listComponents
```

This command displays the name, component ID, and the supported database types for each component that is available in the Oracle home in which RCU was started.

The Component ID and database type are the values you must specify with the `-component` and `-databaseType` parameters, respectively, when you run RCU from the command line.

3.10 RCU Environment Variables

[Table 3-4](#) shows the variables picked up by RCU from the environment. If the environment variable is not set, then RCU uses the default value.

Table 3-4 RCU Environment Variables

Variable	Default	Description
RCU_LOG_LOCATION	/tmp (UNIX operating systems) C:\Users\user_name\AppData\Local\Temp (Windows operating systems)	Location of the RCU log file.
RCU_TIMESTAMP_LOG_DIR	true	Determines whether or not a directory with the format <i>logdir.yyyy-dd_hh-mm</i> is created for the RCU log file. Set this variable to true or false.
RCU_LOG_NAME	rcu.log	Name of the RCU log file.
RCU_LOG_LEVEL	ERROR	Determines the RCU log level. Set this variable to one of SEVERE, ERROR, NOTIFICATION, or TRACE.
RCU_JAVA_OPTIONS	N/A	Set this variable to any Java Virtual Machine (JVM) argument. For example: setenv RCU_JAVA_OPTIONS -Djava.io.tmpdir=/scratch/mytmpDir

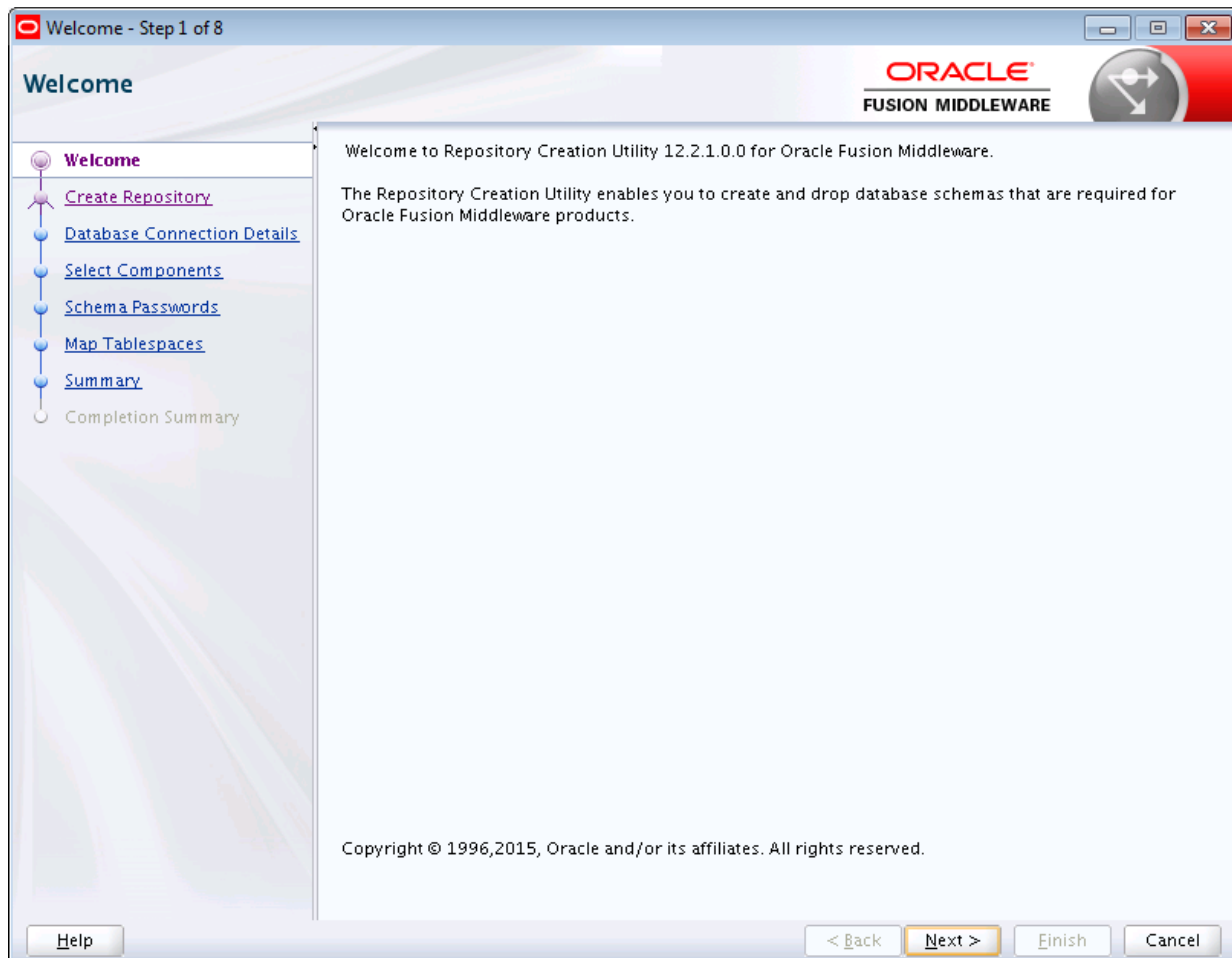
Understanding Repository Creation Utility Screens

This appendix contains screenshots and descriptions for all of the Repository Creation Utility screens.

The following topics are included:

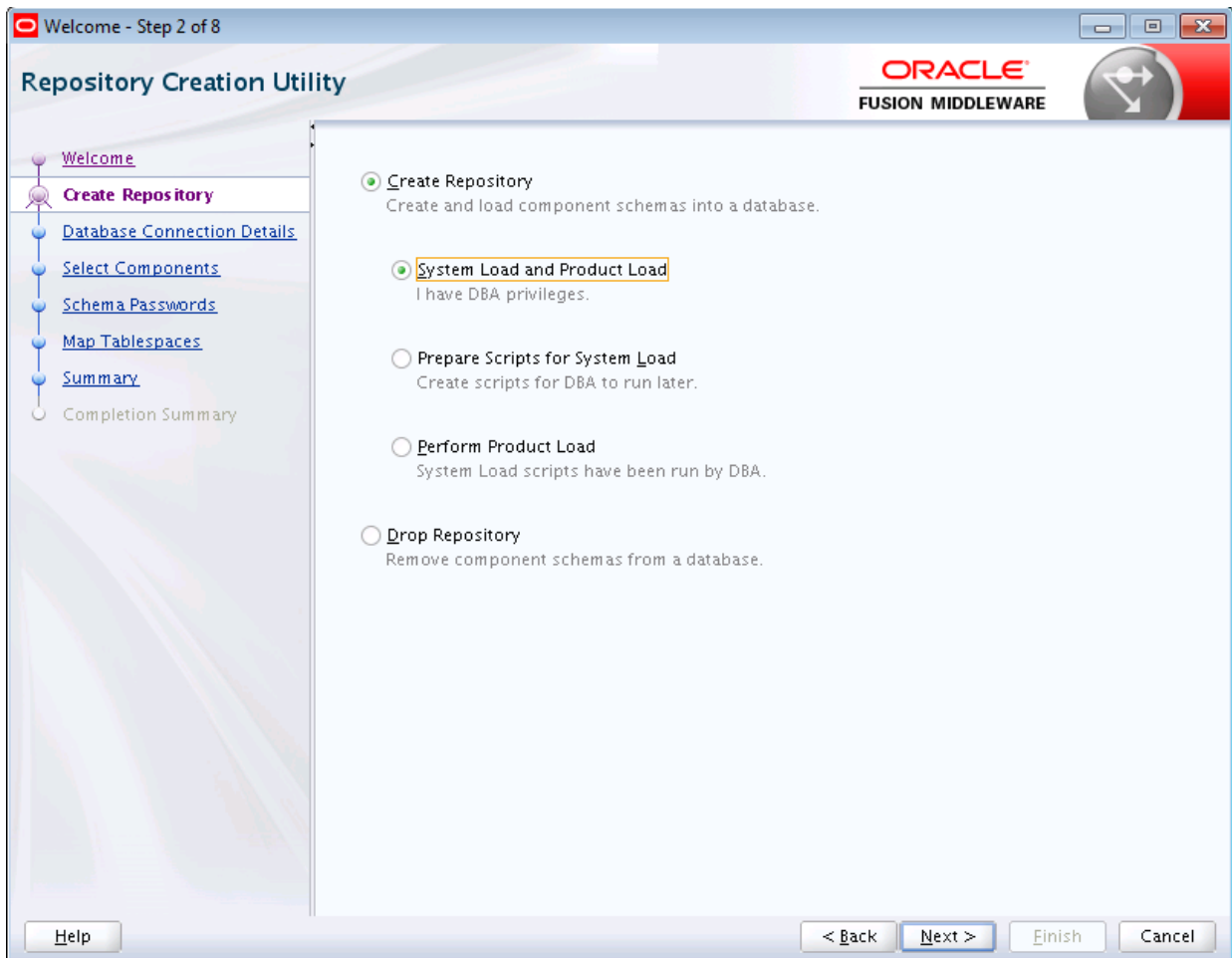
- [Welcome](#)
- [Create Repository](#)
- [Database Connection Details](#)
- [Select Components \(for Create Operation\)](#)
- [Select Components \(for Drop Operation\)](#)
- [Schema Passwords](#)
- [Custom Variables](#)
- [Map Tablespaces](#)
- [Summary \(for Create Operation\)](#)
- [Summary \(for Drop Operation\)](#)
- [Completion Summary \(for Create Operation\)](#)
- [Completion Summary \(for Drop Operation\)](#)

A.1 Welcome



This is the first screen that appears when RCU is started. Note the navigation pane on the left that summarizes the tasks that RCU will help you complete. Each item in the navigation pane represents a specific screen that will prompt you for information required to create or drop your schemas.

A.2 Create Repository



Use this screen to select the action you want to perform.

- [Create Repository](#)
- [Drop Repository](#)

A.2.1 Create Repository

Select **Create Repository** to create component schemas in the database. The following table describes the options available:

Option	Description
System Load and Product Load	Select this option to perform both System Load and Product Load operations. Users must have DBA or SYSDBA permissions to select this option. This option can be performed on any certified database.

Option	Description
Prepare Scripts for System Load	<p>Select this option to perform actions that require DBA or SYSDBA permissions:</p> <ul style="list-style-type: none">• Create tablespaces and schemas.• Create the <code>schema_version_registry</code> (if not already present).• Create entries in <code>schema_version_registry</code> for each selected component, set the proper access permissions, and set the status of the component to "LOADED" in the <code>schema_version_registry</code> table. <p>Any SYSDBA or non-DBA user can select this option. However, DBA privileges are required to execute the SQL script to complete the system load phase.</p> <p>This option is only supported on Oracle and Oracle EBR databases.</p>
Perform Product Load	<p>Select this option to load and create procedures, functions, tables, indexes and other objects within schemas and run any action that does not require DBA access.</p> <p>Any non-DBA user or the REGISTRYOWNER user can select this option.</p> <p>Before selecting this option, the user must be granted the following to perform data load:</p> <pre>grant REGISTRYACCESS to user; grant STBROLE to user;</pre>

A.2.2 Drop Repository

Select **Drop Repository** to remove component schemas from the database.

A.3 Database Connection Details

Welcome - Step 3 of 8

Repository Creation Utility

ORACLE
FUSION MIDDLEWARE

Database Type: Oracle Database

Host Name: examplehost.example.com
For RAC database, specify VIP name or one of the Node name as Host name.
For SCAN enabled RAC database, specify SCAN host as Host name.

Port: 1521

Service Name: orcl.exampledomain.com

Username: fmw
User with DBA or SYSDBA privileges. Example:sys

Password:

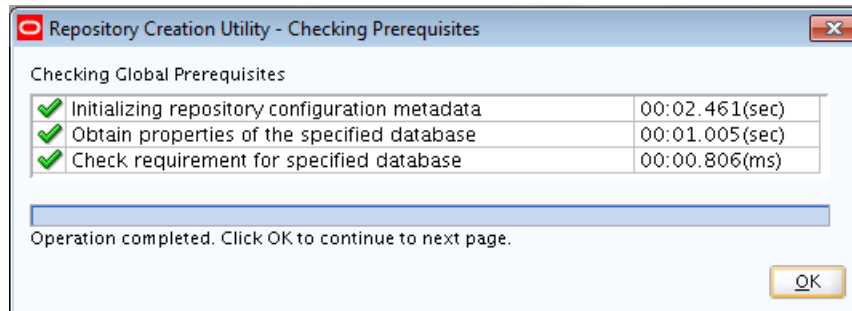
Role: Normal
One or more components may require SYSDBA role for the operation to succeed.

Help < Back Next > Finish Cancel

Use this screen to specify the connection credentials to the database in which you will be creating or dropping your schemas. Select one of the following depending on your database:

- [Connection Credentials for Oracle Databases and Oracle Databases with Edition-Based Redefinition](#)
- [Connection Credentials for MySQL Databases](#)
- [Connection Credentials for Microsoft SQL Server Databases](#)
- [Connection Credentials for IBM DB2 Databases](#)

Click **Next** when you are finished entering the connection credentials for your database. The following screen appears, indicating the progress of the installer establishing the connection with the specified database:



If an error occurs while the connection is being established, the error message(s) appear in the Messages field on the Database Connection Details screen.

Specific database requirements for the various schemas can be found in the [Oracle Fusion Middleware System Requirements and Specifications](#) document.

For certified database versions, see the *System Requirements and Supported Platforms for Oracle Fusion Middleware 12c* document, which is available on the [Oracle Fusion Middleware Supported System Configurations](#) page.

A.3.1 Connection Credentials for Oracle Databases and Oracle Databases with Edition-Based Redefinition

For Oracle databases and Oracle databases with edition-based redefinition, specify the following connection credentials:

Field	Description
Host Name	<p>Enter the name of the server where your database is running. Use the following format: examplehost.exampledomain.com</p> <p>For Oracle RAC databases, specify the VIP name or one of the node names in this field.</p>
Port	Enter the port number for your database. The default port number for Oracle databases is 1521.
Service Name	<p>Specify the service name for the database. Typically, the service name is the same as the global database name.</p> <p>If you are unsure what the service name for your database is, you can obtain it from the <code>SERVICE_NAMES</code> parameter in the database's initialization parameter file. If the initialization parameter file does not contain the <code>SERVICE_NAMES</code> parameter, then the service name is the same as the global database name, which is specified in the <code>DB_NAME</code> and <code>DB_DOMAIN</code> parameters.</p> <p>For Oracle RAC databases, specify the service name of one of the nodes in this field. For example: examplehost.exampledomain.com</p>
Username	Enter the user name for your database. The default user name is SYS.
Password	Enter the password for your database user.
Role	<p>Select the database user's role from the drop-down list:</p> <ul style="list-style-type: none"> Normal SYSDBA

A.3.2 Connection Credentials for MySQL Databases

For MySQL databases, specify the following connection credentials:

Field	Description
Host Name	Enter the host name, IP address, or complete server name in host\server format of the server where your database is running.
Port	Enter the port number for your database.
Database Name	Specify the name of your database.
Username	Specify the name of a user with administrator privileges.
Password	Enter the password for your database user.

A.3.3 Connection Credentials for Microsoft SQL Server Databases

For Microsoft SQL Server databases, specify the following connection credentials:

Field	Description
Unicode Support	Select Yes or No from the drop-down list.
Server Name	Enter the host name, IP address, or complete server name in host\server format of the server where your database is running.
Port	Enter the port number for your database.
Database Name	Specify the name of your database.
Username	Specify the name of a user with administrator privileges.
Password	Enter the password for your database user.

A.3.4 Connection Credentials for IBM DB2 Databases

For IBM DB2 databases, specify the following connection credentials:

Field	Description
Server Name	Enter the host name, IP address, or complete server name in host\server format of the server where your database is running.
Port	Enter the port number for your database.
Database Name	Specify the name of your database.
Username	Specify the name of a user with DB Owner privileges. The default user name for IBM DB2 databases is db2admin.
Password	Enter the password for your database user.

A.4 Select Components (for Create Operation)

Below is the Select Components screen if you selected **Create** on the [Create Repository](#) screen.

Welcome - Step 4 of 8

Select Components

Specify a unique prefix for all schemas created in this session, so you can easily locate, reference, and manage the schemas later.

☐ Select existing prefix: DEV12
 ☒ Create new prefix: DEV

Alpha numeric only. Cannot start with a number. No special characters.

Component	Schema Owner
<input checked="" type="checkbox"/> Oracle AS Repository Components	
<input checked="" type="checkbox"/> AS Common Schemas	
<input checked="" type="checkbox"/> User Messaging Service	DEV_UMS
<input checked="" type="checkbox"/> Metadata Services	DEV_MDS
<input checked="" type="checkbox"/> WebLogic Services	DEV_WLS
<input type="checkbox"/> Common Infrastructure Services	DEV_STB
<input checked="" type="checkbox"/> Oracle Platform Security Services	DEV_OPSS
<input checked="" type="checkbox"/> Audit Services	DEV_IAU
<input checked="" type="checkbox"/> Audit Services Append	DEV_IAU_APPEND
<input checked="" type="checkbox"/> Audit Services Viewer	DEV_IAU_VIEWER
<input checked="" type="checkbox"/> Oracle Business Intelligence	
<input checked="" type="checkbox"/> Business Intelligence Platform	DEV_BIPLATFORM

Help < Back Next > Finish Cancel

The following table describes the fields on this screen.

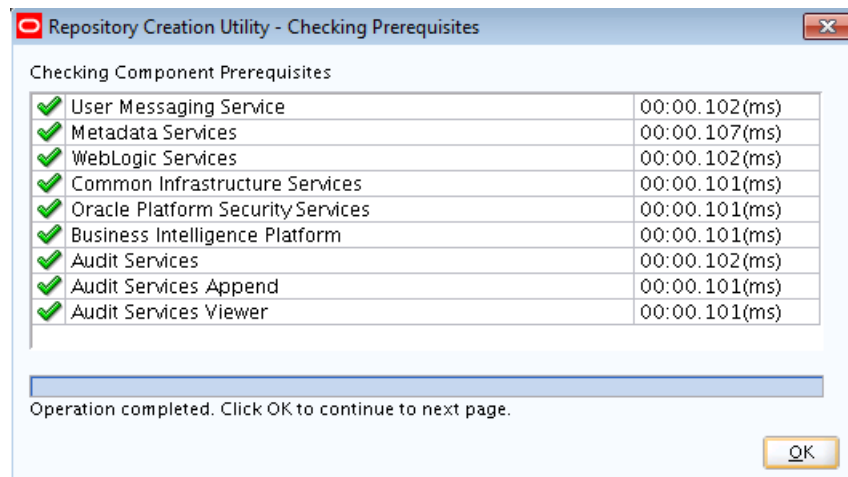
Field	Description
Select existing prefix	Use this option to create schemas using an existing prefix which you can select from the drop-down list. If you select this option, you can only create schemas that do not already have this prefix in the database (for example, if DEV_MDS already exists, you will not be able to select the MDS schema on the page to create it again).
Create new prefix	<p>Use this option to create a new custom prefix that can be used to group your schema together. The prefix name must be a minimum of one character in length and cannot exceed 12 alphanumeric characters (0-9, a-z, or A-Z) in length (not including the underscore character). Prefixes should not start with a number. No whitespace or special characters are allowed.</p> <p>You can edit the schema name or prefix by clicking the item you want to change in the "Schema Owner" column and editing the table cell directly.</p> <p>For more information about custom prefixes, see Understanding Custom Prefixes.</p>

Field	Description
Component	<p>Use the "Component" column in the table to select the component schema you want to create.</p> <p>When you select a component, any other components that may be required by the component you select are also selected. For example, if you select Oracle Platform and Security Services, then the Audit Services schema is also automatically selected if it has not already been selected. The Audit Services schema is required by the Oracle Platform and Security Services schema.</p> <p>If a component has a plus sign (+) next to its name, then there are sub components available. Click on the plus sign (+) to expand the category to view all sub components. If you want to select a component with all its subcomponents, click on the top-most box with the plus sign (+).</p> <p>If you are creating component schemas on an IBM DB2 database, see important information in Additional Requirements for IBM DB2 Databases.</p>
Schema Owner	<p>This column shows the name of the schema owner for each component (custom prefix and schema name). You can edit the schema owner value by clicking the item you want to change in this column and editing the table cell directly.</p>

Note:

You must remember the Schema Owner name for the components you are installing; you will need this information during the configuration phase of your Oracle Fusion Middleware product installation. Oracle recommends that you write this value down.

Click **Next** when you are finished specifying your prefix and schema names and when you are finished selecting components. The following screen appears, indicating the progress of component prerequisite checking before the schemas are created.



If an error occurs during the prerequisite checking, the error message(s) appear in the Messages field on the Select Components screen.

Click **OK** to dismiss this screen.

A.5 Select Components (for Drop Operation)

Below is the Select Components screen if you selected **Drop** on the [Create Repository](#) screen.

Select the schemas to drop from the database.

Select schemas with prefix of:

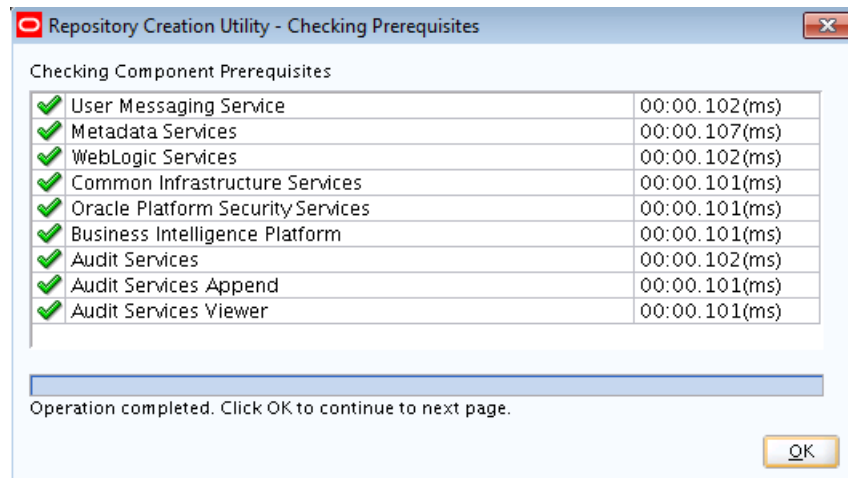
Component	Schema Owner
<input type="checkbox"/> Oracle AS Repository Components	
<input checked="" type="checkbox"/> AS Common Schemas	
<input type="checkbox"/> User Messaging Service	UMS
<input checked="" type="checkbox"/> Metadata Services	DEV65_MDS
<input type="checkbox"/> WebLogic Services	WLS
<input checked="" type="checkbox"/> Common Infrastructure Services	DEV65_STB
<input checked="" type="checkbox"/> Oracle Platform Security Services	DEV65_OPSS
<input checked="" type="checkbox"/> Audit Services	DEV65_IAM
<input checked="" type="checkbox"/> Audit Services Append	DEV65_IAM_APPEND
<input checked="" type="checkbox"/> Audit Services Viewer	DEV65_IAM_VIEWER
<input type="checkbox"/> Oracle Business Intelligence	

Buttons: < Back, Next >, Finish, Cancel

The following table describes the fields on this screen:

Field	Description
Select schemas with prefix of	Use the drop-down list in this field to select an existing custom prefix - all schemas associated with this prefix will be removed.
Component	<p>Select the component schemas you want to remove.</p> <p>NOTE: Unlike create operations, schema dependencies are not handled automatically by RCU for drop operations. When you remove a schema, you must also remove the schemas which depend on the schema you are removing. For example, the Audit Services schema is required by the Oracle Platform Security Services schema; if you remove the Audit Services schema, the Oracle Platform Security Services schema will no longer work.</p>
Schema Owner	<p>This column shows the schema owner (custom prefix and schema name).</p> <p>For drop operations, this column cannot be edited.</p>

Click **Next** when you are finished. The following screen appears:

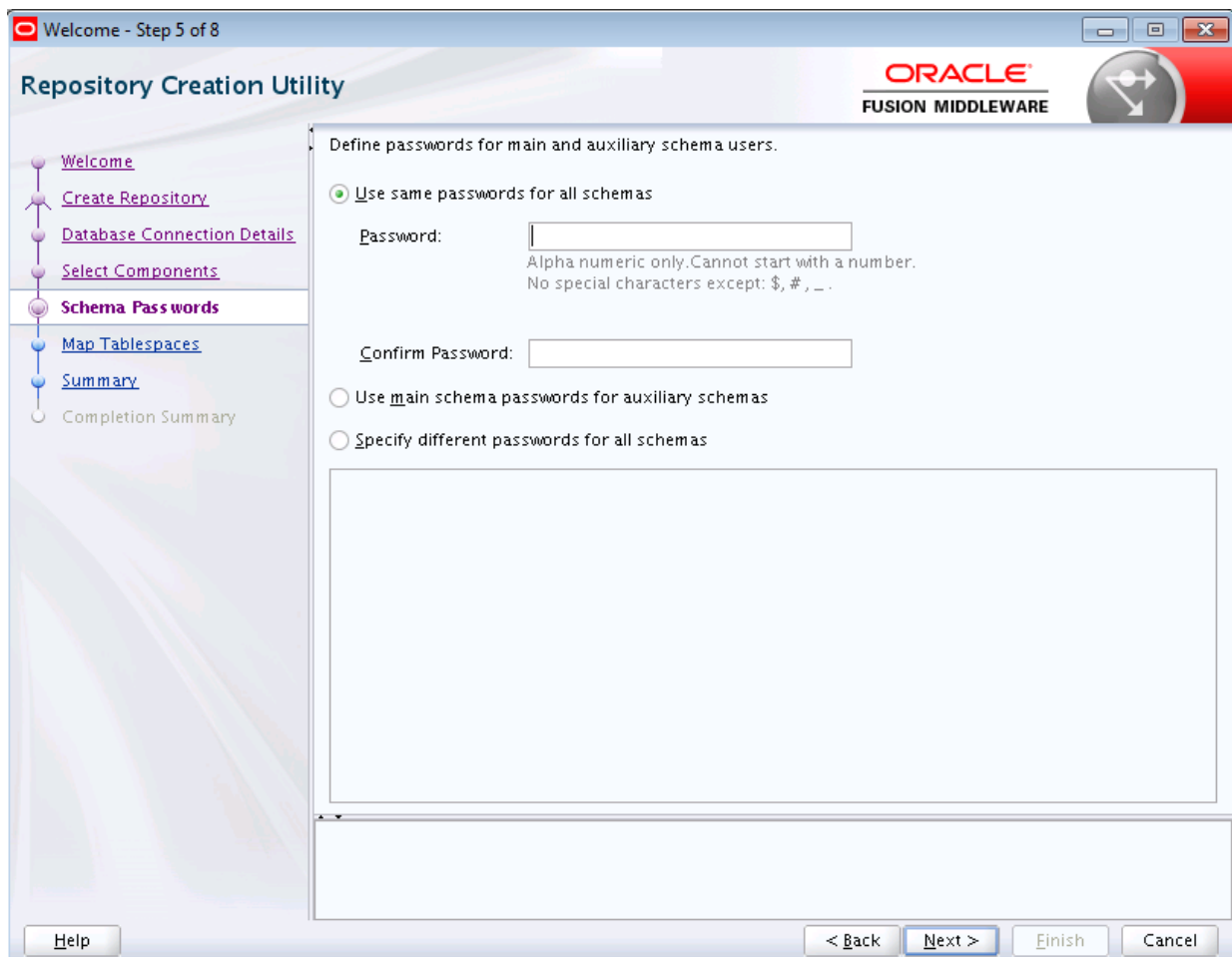


If an error occurs during the prerequisite checking, the error message(s) appear in the Messages field on the Select Components screen.

Click **OK** to dismiss this screen.

A.6 Schema Passwords

Below is the Schema Passwords screen.



There are three ways to specify schema passwords on this screen; they are described in the following table:

Option	Description
Use same password for all schemas	Select this option if you want to use a single password for all schemas and their auxiliary schemas. In the Password field, enter your password. Enter your password again in the Confirm Password field.
Use main schema passwords for auxiliary schemas	Select this option if you want to specify different passwords for the main schemas, but still have the same password used for their respective auxiliary schemas. If you select this option, only the main schemas will be visible in the table. For each schema, you must enter each schema's password in the Schema Password column in the table, and enter the same password in the Confirm Password column.
Specify different passwords for all schemas	Select this option if you want to specify unique passwords for the main schemas and auxiliary schemas. If you select this option, all main schemas and auxiliary schemas will be visible in the table. For each schema and auxiliary schema, you must enter the password in the Schema Password column in the table, and enter the same password in the Confirm Password column.

Note:

You must remember the passwords you enter on this screen; you will need this information during the configuration phase of your Oracle Fusion Middleware product installation. Oracle recommends that you write these values down.

A.7 Custom Variables

Custom variables are required by some products for additional product configuration information. This screen appears only if you selected Oracle Data Integrator, SOA Suite, or WebCenter Portal — Analytics on the Select Components screen. You can select Oracle Data Integrator, SOA Suite, or WebCenter Portal — Analytics only if the Oracle home in which RCU was started contains Oracle Data Integrator, Oracle SOA Suite, or Oracle WebCenter Portal, respectively.

- If **Oracle Data Integrator** is selected, the [Custom Variables for Oracle Data Integrator](#) will be visible.
- If **SOA Suite** is selected, the [Custom Variables for Oracle SOA Suite](#) will be visible.
- If **WebCenter Portal - Analytics** is selected, the [Custom Variable for Oracle WebCenter Portal Analytics](#) will be visible.
- If **Oracle Data Integrator**, **SOA Suite**, and **WebCenter Portal - Analytics** are selected, the custom variables for Oracle Data Integrator, Oracle SOA Suite, and Oracle WebCenter Portal Analytics will be visible on this screen.

A.7.1 Custom Variables for Oracle Data Integrator

Below is the Custom Variables screen for Oracle Data Integrator:

Component	Custom Variable	Value
Master and Work Repository	Supervisor Password	
	Confirm Supervisor Password	
	Work Repository Type: (D) Development...	
	Work Repository Name (WORKREP)	
	Work Repository Password	
	Confirm Work Repository Password	
	Encryption Algorithm: AES-128 (Default...	

The custom variables for Oracle Data Integrator are described in the following table:

Variable	Description
Supervisor Password	<p>Password of the supervisor user. You must confirm this password on the following line.</p> <p>You must enter a password for the Supervisor Password and Confirm Supervisor Password fields. These fields are required before you can continue. The password should be between 6 and 12 characters.</p>
Work Repository Type	<p>Specify how the Work Repository will be used:</p> <ul style="list-style-type: none"> Use Development (D) for creating a development repository. This type of repository allows management of design-time objects such as data models and projects (including interfaces, procedures, etc.) A development repository also includes the run-time objects (scenarios and sessions). This type of repository is suitable for development environments. Use Execution (E) for creating an execution repository: This type of repository only includes run-time objects (scenarios, schedules and sessions). It allows launching and monitoring of data integration jobs in Operator Navigator. Such a repository cannot contain any design-time artifacts. Designer Navigator cannot be used with it. An execution repository is suitable for production environments. <p>This field is optional. The default value is D.</p>
Work Repository Name	<p>A unique name for the Work Repository (for example: DEVWORKREP1).</p> <p>This field is optional.</p>

Variable	Description
Work Repository Password	Provide a password for the Work Repository. If you provide a password, you must confirm the password on the following line. The Work Repository Password and Confirm Work Repository Password fields are optional.
Encryption Algorithm	Select the encryption algorithm, either AES-128 or AES-256. This field is optional. The default value is AES-128.

A.7.2 Custom Variables for Oracle SOA Suite

Below is the Custom Variables screen for Oracle SOA Suite:

Welcome - Step 6 of 9

Repository Creation Utility ORACLE FUSION MIDDLEWARE

Enter value for the following custom variables.

Component	Custom Variable	Value
SOA Infrastructure	Database Profile (SMALL/MED/LARGE)	SMALL
	Healthcare Integration (YES/NO)	NO

Help < Back Next > Finish Cancel

The custom variables for Oracle SOA Suite are described in the following table:

Variable	Description
Database Profile	Specify the database profile you want to use for Oracle SOA Suite. This determines the size of the SOA database. The default value is SMALL.
Healthcare Integration	Specify whether or not you want to enable Healthcare Integration for Oracle SOA Suite. The default value is NO.

A.7.3 Custom Variable for Oracle WebCenter Portal Analytics

Below is the Custom Variables screen for Oracle WebCenter Portal Analytics:

Welcome - Step 6 of 9

Repository Creation Utility

ORACLE
FUSION MIDDLEWARE

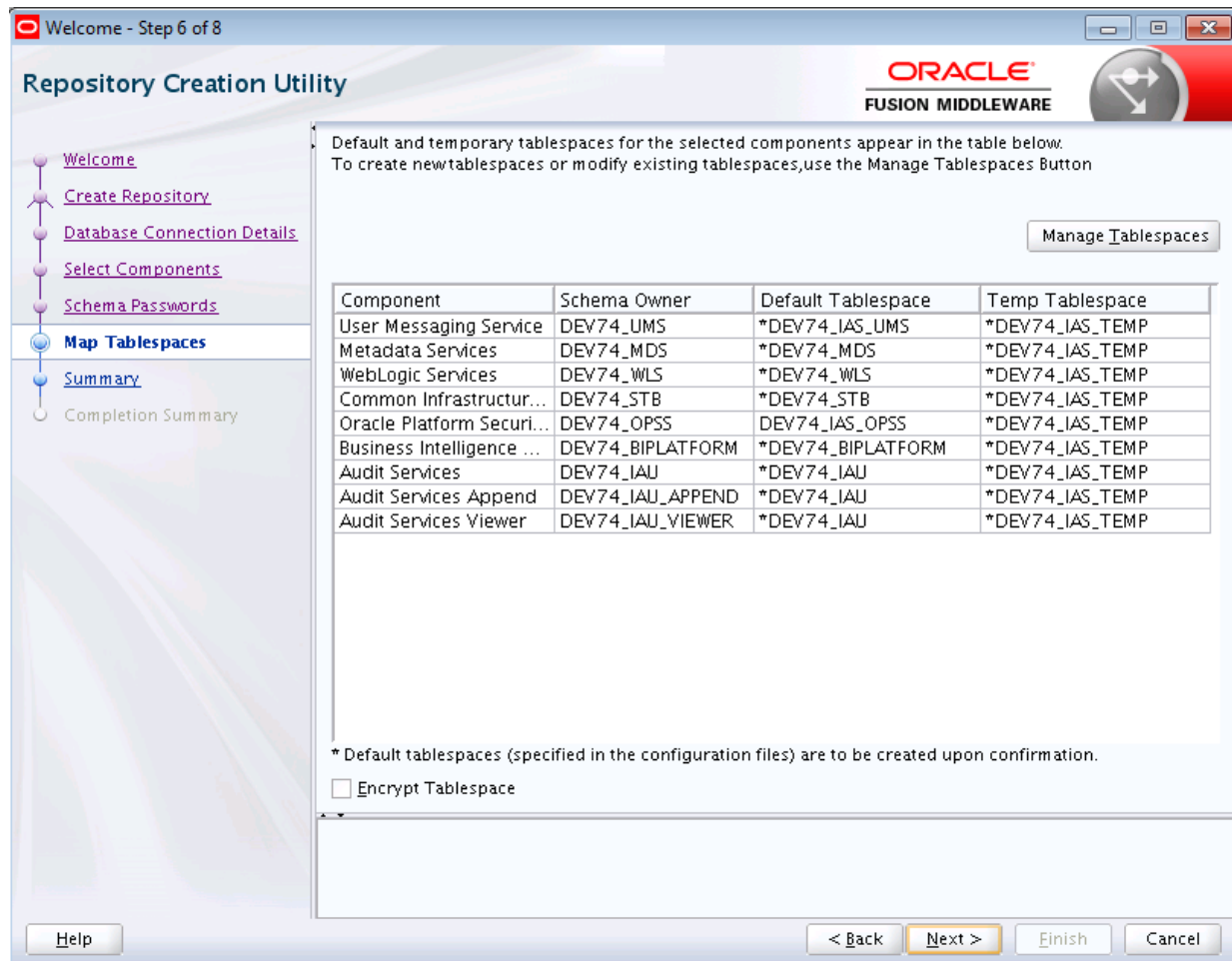
Enter value for the following custom variables.

Component	Custom Variable	Value
Analytics	Install Analytics with Partitioning (Y/N)	N

Help < Back Next > Finish Cancel

Specify Y if you want to install Analytics with database partitioning enabled, or N if you do not want to enable database partitioning. The default value is N.

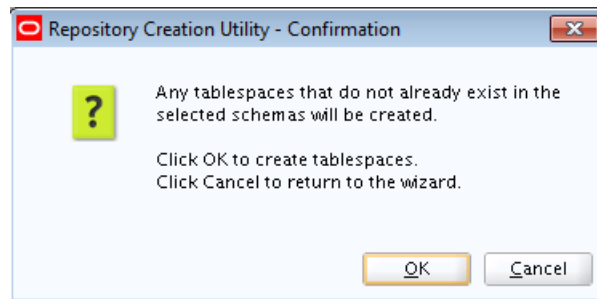
A.8 Map Tablespaces



This screen only appears if you selected the **Create** option on the [Create Repository](#) screen. The following topics are covered:

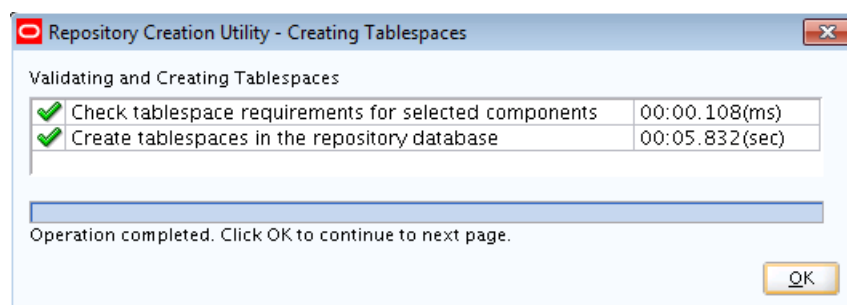
- [Default Tablespace Mappings](#)
- [Changing Default and Temporary Tablespaces](#)
- [Viewing and Changing Additional Tablespaces](#)
- [Managing Tablespaces and Datafiles](#)
- [Encrypting Tablespaces](#)

Click **Next** when you are finished with your tablespace information. The following screen appears, asking you to confirm the creation of tablespaces for any new schemas.

**Note:**

- RCU only creates tablespaces for those components associated with RCU.
- The **Encrypt Tablespace** check box appears on this screen only if Transparent Data Encryption (TDE) is enabled in the database (Oracle or Oracle EBR) when RCU is started. For more information, see [Encrypting Tablespaces](#).

Click **OK** to continue. The following screen appears, indicating the progress of the tablespace creation.



Click **Stop** to cancel tablespace creation. When the tablespaces are created, click **OK** to dismiss this window.

A.8.1 Default Tablespace Mappings

The default tablespace mapping for each component are shown in [Understanding Repository Creation Utility Schemas, IDs, and Tablespaces](#).

In the "Default Tablespace" and "Temp Tablespace" columns, you can click on the tablespace cell to select from a list of available additional tablespace names.

A.8.2 Changing Default and Temporary Tablespaces

To change the default tablespace for a component, select the tablespace name in the Default Tablespace column, then select the tablespace name you want to use from the drop-down list. You can have your components use as many or as few tablespaces as desired to suit your configuration.

To change the temporary tablespace for a component, select the tablespace name in the Temp Tablespace column, then select the tablespace name you want to use from the drop-down list.

A.8.3 Viewing and Changing Additional Tablespaces

Some components have additional tablespaces associated with their schemas. If this is the case, the **Additional Tablespaces** button will appear on this screen. If none of the selected components have additional tablespaces, then this button will not appear.

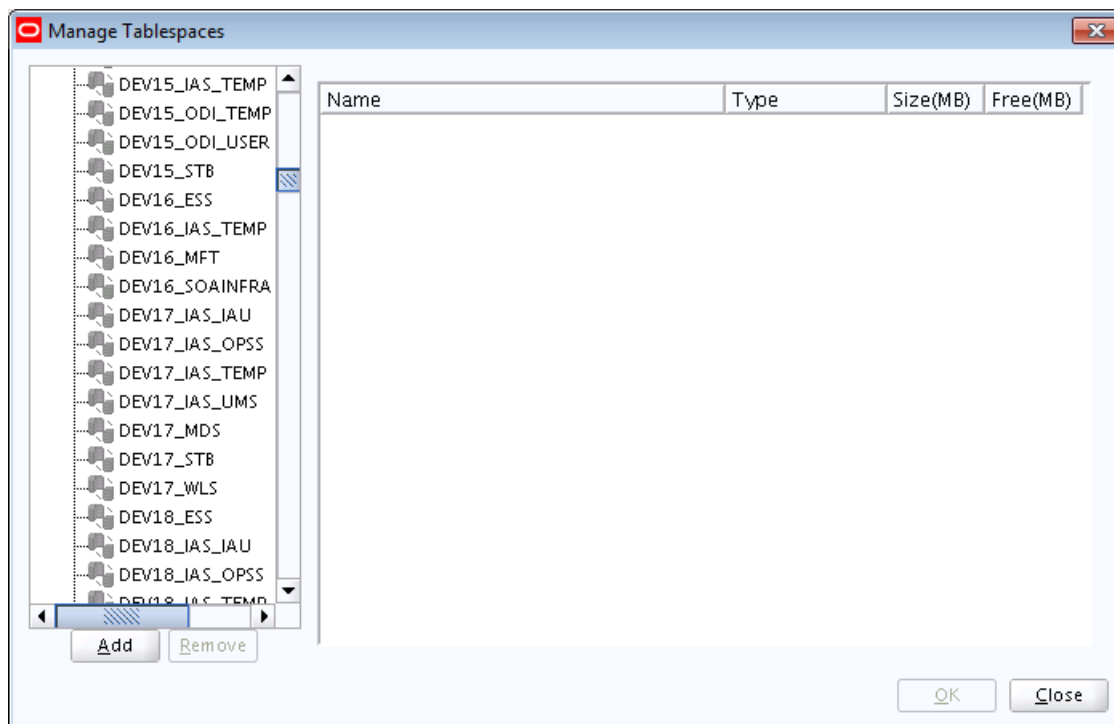
To view and change additional tablespaces associated with the selected components, click the **Additional Tablespaces** button. Only those components with additional tablespaces as defined in the configuration files will appear on this screen.

To change the tablespace you want to use for a component, click in the "Tablespace Name" column and select the tablespace you want to use from the drop-down list.

Click **OK** when you are finished.

A.8.4 Managing Tablespaces and Datafiles

To manage your tablespaces and datafiles, click the **Manage Tablespaces** button. You will see a screen similar to the following:



The following topics are covered in this section:

- [Adding, Modifying, and Removing Tablespaces](#)
- [Adding, Modifying, and Removing Datafiles](#)

A.8.4.1 Adding, Modifying, and Removing Tablespaces

Only tablespaces that will be created by RCU can be modified or removed. Tablespaces that existed before RCU was launched are visible on this screen but are grayed out and cannot be modified or removed.

Only tablespaces that are used by a component are created. You can specify a new tablespace here, but unless it is actually used by a component it will not be created.

To modify a tablespace, select the tablespace name on the left-hand portion of the screen, and edit the fields as described in the following table:

Field	Description
Name	Edit the tablespace name this field to change the name of your tablespace.
Type	Specify whether you want this tablespace to be a temporary tablespace or permanent tablespace.
Block Size (KB)	Specify the block size (in Kilobytes) to be used for data retrieval.
Storage Type	Select Use Bigfile Tablespace if you want to create a bigfile tablespace; this is typically used if you have single large files instead of multiple small files. Select Use Automatic Segment Space Management if you want to use bitmaps to manage the free space within segments.

To add a tablespace, click **Add** and specify the same details as above (for modifying a tablespace) for your new tablespace.

To remove a tablespace, select the tablespace name from the navigation tree, then click **Remove**. This tablespace will not get created.

A.8.4.2 Adding, Modifying, and Removing Datafiles

In the Datafiles section, specify the datafiles that make up the selected tablespace.

To add a datafile, click the icon with the plus sign (+):



The Add Datafile screen appears:

Provide the information described in the following table:

Field	Description
File Name	Specify the name of the datafile. NOTE: Datafile names with a dash or hyphen (-) character are not permitted.

Field	Description
File Directory	Specify the location where this datafile will reside.
Size	Specify the initial size of the datafile. Use the drop-down list to specify the size in kilobytes (KB), megabytes (MB), or gigabytes (GB).
Automatically extend datafile when full (AUTOEXTEND)	<p>Select Automatically extend datafile when full (AUTOEXTEND) if you want to automatically extend the size of your datafile when it becomes full. In the "Increment" field, specify the size by which your datafile should be increased each time it becomes full. Use the drop-down list to specify the size in kilobytes (KB), megabytes (MB), or gigabytes (GB).</p> <p>If you want to limit maximum size of the datafile, specify this value in the "Maximum Size" field.</p>

Similarly, to modify or edit a datafile, select the icon next to the datafile name you want to edit, then click the icon with the pencil:



To delete a datafile, select the icon next to the datafile name you want to delete, then click the icon with the "X":



A.8.5 Encrypting Tablespaces

Select the **Encrypt Tablespace** check box on the Map Tablespaces screen if you want to encrypt all the new tablespaces that will be created by RCU.

The **Encrypt Tablespace** check box appears on the [Map Tablespaces](#) screen only if you have TDE (Transparent Data Encryption) enabled in the database (Oracle or Oracle EBR) when you start RCU. If TDE is not enabled, this check box will not appear. If TDE is enabled in the database and you provide the `—encryptTablespace true` option when you start RCU, the check box will be selected by default.

TDE tablespace encryption allows you to encrypt sensitive data stored in tablespaces. For more information about Transparent Data Encryption, see [Introduction to Transparent Data Encryption](#) in the *Oracle Database Advanced Security Guide*.

Note:

When you select this option, *all new* tablespaces created by RCU will be encrypted.

You cannot select specific tablespaces on this screen to be encrypted. Also, tablespaces that were created before RCU was launched cannot be encrypted using this option.

A.9 Summary (for Create Operation)

Below is the Summary screen if you selected **Create** on the [Create Repository](#) screen.

Repository Creation Utility

Database details:

Host Name
Port 1521
Service Name
Connected As sys
Operation System and Data Load concurrently
Prefix for (prefixable) Schema Owners DEV74

Component	Schema Owner	Tablespace Type	Tablespace Name
User Messaging Service	DEV74_UMS	Default	DEV74_IAS_UMS
		Temp	DEV74_IAS_TEMP
		Additional	None
Metadata Services	DEV74_MDS	Default	DEV74_MDS
		Temp	DEV74_IAS_TEMP
		Additional	None
WebLogic Services	DEV74_WLS	Default	DEV74_WLS
		Temp	DEV74_IAS_TEMP
		Additional	None
Common Infrastructure Services	DEV74_STB	Default	DEV74_STB
		Temp	DEV74_IAS_TEMP
		Additional	None
Oracle Platform Security Services	DEV74_OPSS	Default	DEV74_IAS_OPSS
		Temp	DEV74_IAS_TEMP
		Additional	None
Business Intelligence Platform	DEV74_BIPLATFORM	Default	DEV74_BIPLATFORM
		Temp	DEV74_IAS_TEMP

Save Response File

Help < Back Next > Create Cancel

Click **Save Response File** if you want to save the RCU session to a text file (called a response file). The response file collects all the information that you have provided in the RCU screens.

The values in the response file can be used exactly as-is (or modified as needed) to run RCU at a later time. If you choose to run the graphical interface, the data provided in the response file can be used to pre-populate the RCU screens. If you choose to run RCU from the command line, you can use a response file to provide values for all valid command-line parameters to RCU rather than directly specifying these parameters on the command line. For more information, see [Using Response Files](#).

When you click **Save Response File**, you will see the following screen:

Save Response File

Directory to save Response file:

/userhome/.rcu Browse

☐ Save Passwords in Wallet

Help OK Cancel

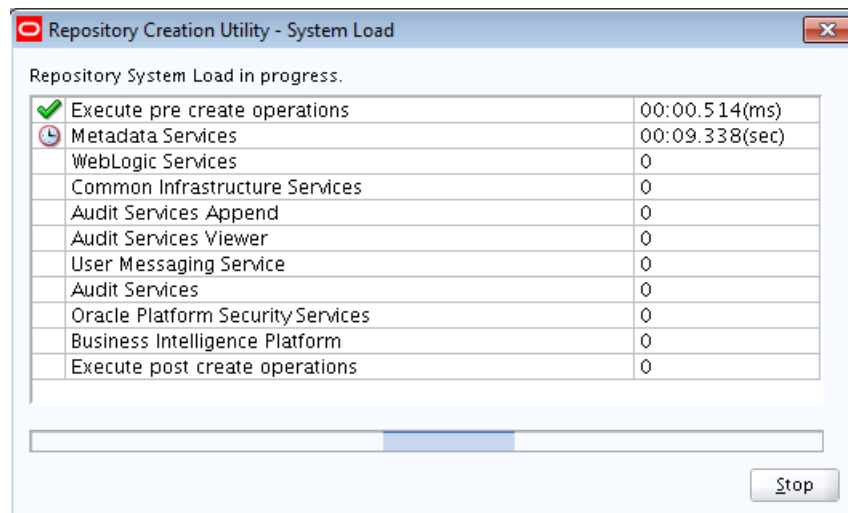
The following table describes the fields on this screen:

Element	Description
Directory to save Response file	<p>Specify the full path of the directory where the response file will be saved. By default, RCU saves the response file in the \$HOME/.rcu directory.</p> <p>Click Browse to search for a specific directory.</p>
Save Passwords in Wallet	<p>Select this option to securely store the passwords you provided on the RCU screens in an Oracle Wallet file, such as the schema passwords provided on the Schema Passwords screen.</p> <p>By default, this option is not selected. RCU will not save your passwords unless you select this option.</p> <p>You can use the wallet later in silent situations to provide the necessary passwords to RCU without having to directly enter your passwords on the command line. If a wallet is not provided to RCU in silent mode, you will be prompted to enter the required passwords.</p>

Click **OK** to generate the response file (and wallet if selected) in the given location and return to the Summary screen.

Review the information on the Summary screen, and click **Create** to begin schema creation. The operations summarized on this page will be performed when you click **Create**.

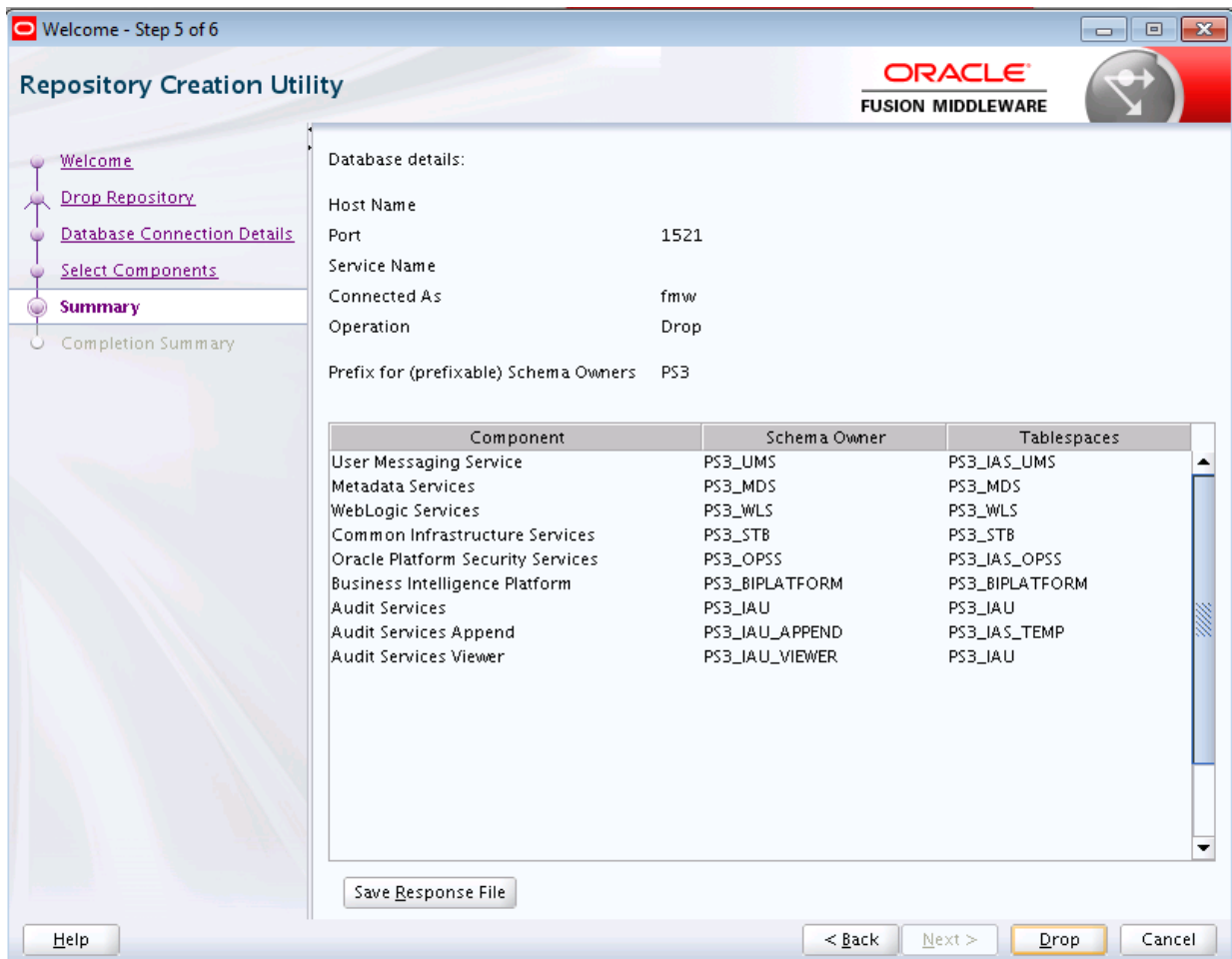
While the schemas are being created, you will see the following progress screen:



Click **Stop** if you want to stop creating the schemas.

A.10 Summary (for Drop Operation)

Below is the Summary screen if you selected **Drop** on the [Create Repository](#) screen.



Click **Save Response File** if you want to save the RCU session to a text file (called a response file). The response file collects all the information that you have provided in the RCU screens.

The values in the response file can be used exactly as-is (or modified as needed) to run RCU at a later time. If you choose to run the graphical interface, the data provided in the response file can be used to pre-populate the RCU screens. If you choose to run RCU from the command line, you can use the response file to provide values for all valid command-line parameters to RCU rather than directly specifying these parameters on the command line.

When you click **Save Response File**, you will see the following screen:



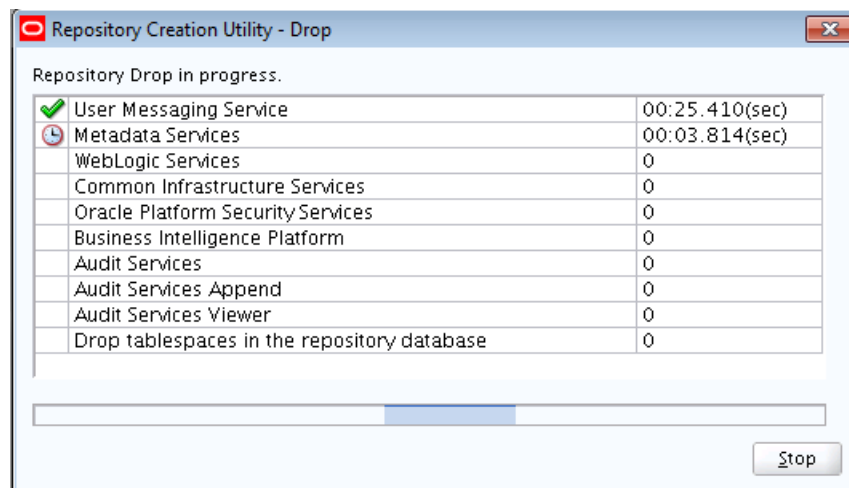
The following table describes the fields on this screen:

Element	Description
Directory to save Response file	Specify the full path of the directory where the response file will be saved. By default, RCU saves the response file in the \$HOME/.rcu directory. Click Browse to search for a specific directory.
Save Passwords in Wallet	Select this option to securely store the passwords you provided on the RCU screens in an Oracle Wallet file, such as the schema passwords provided on the Schema Passwords screen. By default, this option is not selected. RCU will not save your passwords unless you select this option. You can use the wallet later in silent situations to provide the necessary passwords to RCU without having to directly enter your passwords on the command line. If a wallet is not provided to RCU in silent mode, you will be prompted to enter the required passwords.

Click **OK** to generate the response file (and wallet if selected) in the given location and return to the Summary screen.

Review the information on the Summary screen, and click **Drop** to begin the operations summarized on this page.

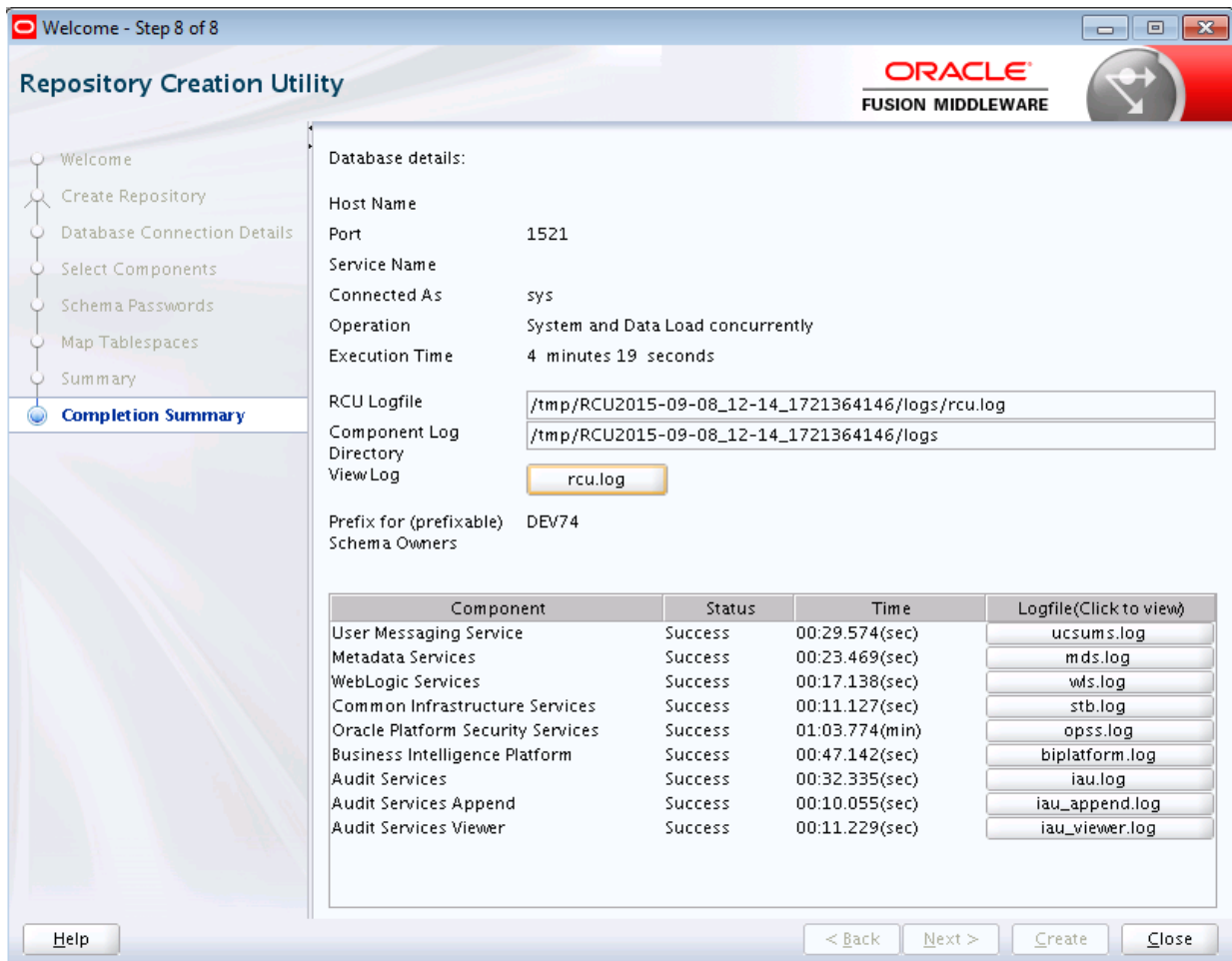
While the schema(s) are being dropped, you will see the following progress screen:



Click **Stop** if you want to cancel the operation.

A.11 Completion Summary (for Create Operation)

Below is the Completion Summary screen if you selected **Create** on the [Create Repository](#) screen.



This screen contains information about the log files that were created from this RCU operation. You can click on the name of a particular log file to view the contents of that file.

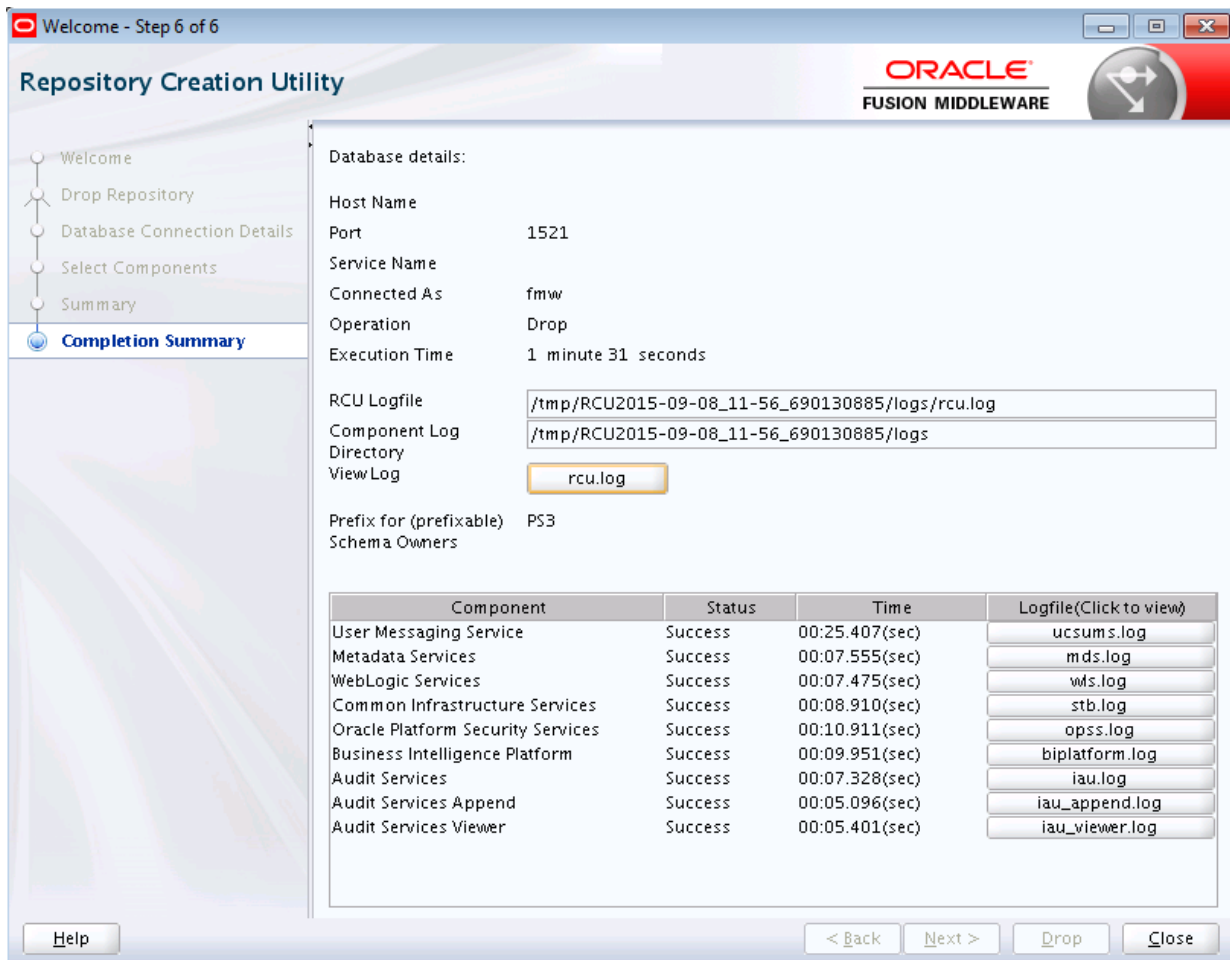
If there were any problems encountered during schema creation, you can troubleshoot the issue using the log files. For more information, refer to [RCU Log Files](#).

If errors are encountered during a Create operation, or if a Create operation fails for any component, the **Cleanup for failed components** checkbox appears on this page and is selected by default. If selected, RCU will perform cleanup operations for the component that failed during the Create operation. If you choose not to select this checkbox, you can cleanup the failed component at a later time by performing a Drop operation for the failed component(s).

Review the information on this screen, then click **Close** to dismiss this screen.

A.12 Completion Summary (for Drop Operation)

Below is the Completion Summary screen if you selected **Drop** on the [Create Repository](#) screen.



Note the log file names for each component that are visible in the "Logfile" column.

By default, the main RCU log (`rcu.log`) and component log files are written to the `RCUdate_timestamp_random_number/logs` directory inside the temporary directory on your system.

For example:

- On UNIX operating systems:

`/tmp/RCUdate_timestamp_random_number/logs`

- On Windows operating systems:

`C:\Users\user_name\AppData\Local\Temp\RCUdate_timestamp_random_number\logs`

Click **rcu.log** to view the contents of the main RCU log in a separate window.

If there were any problems encountered during schema creation, you can troubleshoot the issue using the log files. For more information, see [Troubleshooting Repository Creation Utility](#).

Review the information on this screen, then click **Close** to dismiss this screen.

Understanding Repository Creation Utility Schemas, IDs, and Tablespaces

This appendix lists the available schemas that can be created using RCU, and also their component IDs and dependencies.

It includes the following topic:

- [Repository Creation Utility Schemas, IDs, and Tablespaces](#)

B.1 Repository Creation Utility Schemas, IDs, and Tablespaces

[Table B-1](#) lists the schemas along with their component IDs, tablespace mappings, and dependencies.

The "Schema Owner" is the name of the schema that you will see in RCU and is also the name you must provide in the Oracle Fusion Middleware Configuration Wizard on the Configure JDBC Component Schema screen, prepended by the custom prefix.

The "Component ID" is the value you must specify with the `-component` parameter when you are creating or dropping schemas using the command line.

Note:

Not all schemas are supported on all database types. For more information, refer to "Verifying Requirements for Repository Creation Utility" in the *Oracle Fusion Middleware System Requirements and Specifications* document.

Table B-1 Schema Component IDs, Tablespace Mappings, and Dependencies

Component	Schema Owner	Component ID	Default Tablespace	Temp Tablespace	Dependencies
AS Common Schemas					
Metadata Services	MDS	MDS	MDS	IAS_TEMP	None
Audit Services	IAU	IAU	IAS_IAU	IAS_TEMP	Audit Services Append (IAU_APPEND) Audit Services Viewer (IAU_VIEWER)
Audit Services Append	IAU_APPEND	IAU_APPEND	IAS_IAU	IAS_TEMP	None
Audit Services Viewer	IAU_VIEWER	IAU_VIEWER	IAS_IAU	IAS_TEMP	None

Component	Schema Owner	Component ID	Default Tablespace	Temp Tablespace	Dependencies
Oracle Platform Security Services	OPSS	OPSS	IAS_OPSS	IAS_TEMP	Audit Services (IAU) Audit Services Append (IAU_APPEND) Audit Services Viewer (IAU_VIEWER)
User Messaging Service	UMS	UCSUMS	IAS_UMS	IAS_TEMP	Metadata Services (MDS)
WebLogic Services	WLS	WLS	WLS	IAS_TEMP	None
Oracle Enterprise Scheduler	ESS	ESS	ESS	IAS_TEMP	Metadata Services (MDS) Audit Services (IAU) Audit Services Append (IAU_APPEND) Audit Services Viewer (IAU_VIEWER) Oracle Platform Security Services (OPSS)
Common Infrastructure Services (formerly Service Table) ¹	STB	STB	STB	IAS_TEMP	None
Oracle Data Integrator					
Master and Work Repository	ODI_REPO	ODI	ODI_USER	ODI_TEMP	
SOA Suite					

Component	Schema Owner	Component ID	Default Tablespace	Temp Tablespace	Dependencies
SOA Infrastructure	SOAINFRA	SOAINFRA	SOAINFRA	IAS_TEMP	Metadata Services (MDS) Audit Services (IAU) Audit Services Append (IAU_APPEND) Audit Services Viewer (IAU_VIEWER) Oracle Platform Security Services (OPSS) User Messaging Service (UMS) WebLogic Services (WLS)
Managed File Transfer					
Managed File Transfer	MFT	MFT	MFT	IAS_TEMP	Metadata Services (MDS) Audit Services (IAU) Audit Services Append (IAU_APPEND) Audit Services Viewer (IAU_VIEWER) Oracle Platform Security Services (OPSS) User Messaging Service (UMS) Oracle Enterprise Scheduler (ESS)
Oracle Business Intelligence					

Component	Schema Owner	Component ID	Default Tablespace	Temp Tablespace	Dependencies
Business Intelligence Platform	BIPLATFORM	BIPLATFORM	BIPLATFOR M	IAS_TEMP	Metadata Services (MDS) Oracle Platform Security Services (OPSS) Audit Services (IAU) Audit Services Append (IAU_APPEND) Audit Services Viewer (IAU_VIEWER)
WebCenter Portal					
Portal and Services	WEBCENTER	WEBCENTER	IAS_WEBCE NTER	IAS_TEMP	Metadata Services (MDS) Oracle Platform Security Services (OPSS) Audit Services (IAU) Audit Services Append (IAU_APPEND) Audit Services Viewer (IAU_VIEWER)
Portlet Producers	PORTLET	PORTLET	IAS_PORTL ET	IAS_TEMP	Oracle Platform Security Services (OPSS) Audit Services (IAU) Audit Services Append (IAU_APPEND) Audit Services Viewer (IAU_VIEWER)

Component	Schema Owner	Component ID	Default Tablespace	Temp Tablespace	Dependencies
Analytics	ACTIVITIES	ACTIVITIES	IAS_ACTIV ITY	IAS_TEMP	Oracle Platform Security Services (OPSS) Audit Services (IAU) Audit Services Append (IAU_APPEND) Audit Services Viewer (IAU_VIEWER)
Discussions	DISCUSSION S	DISCUSSIONS	IAS_DISCU SS	IAS_TEMP	Oracle Platform Security Services (OPSS) Audit Services (IAU) Audit Services Append (IAU_APPEND) Audit Services Viewer (IAU_VIEWER)
WebCenter Content					
Oracle WebCenter Content Server — Search Only	OCSSEARCH	CONTENTSEAR CH	OCSSEARCH	OCSSEARCH _TEMP	None
Oracle WebCenter Content Server — Complete	OCS	CONTENT	OCS	OCS_TEMP	Oracle Platform Security Services (OPSS) Audit Services (IAU) Audit Services Append (IAU_APPEND) Audit Services Viewer (IAU_VIEWER)

Component	Schema Owner	Component ID	Default Tablespace	Temp Tablespace	Dependencies
Oracle WebCenter Enterprise Capture	CAPTURE	CAPTURE	CAPTURE	CAPTURE_TEMP	Metadata Services (MDS) Oracle Platform Security Services (OPSS) Audit Services (IAU) Audit Services Append (IAU_APPEND) Audit Services Viewer (IAU_VIEWER)
WebCenter Sites					
WebCenter Sites	WCSITES	WCSITES	TS_WCSITES	TS_TMP_WCSITES	Oracle Platform Security Services (OPSS) Audit Services (IAU) Audit Services Append (IAU_APPEND) Audit Services Viewer (IAU_VIEWER)
WebCenter Sites — Visitor Services	WCSITES_VS	WCSITESVS	TS_WCSITES_VS	TS_TMP_WCSITES_VS	Oracle Platform Security Services (OPSS) Audit Services (IAU) Audit Services Append (IAU_APPEND) Audit Services Viewer (IAU_VIEWER)
Oracle GoldenGate					

Component	Schema Owner	Component ID	Default Tablespace	Temp Tablespace	Dependencies
Monitor Server	OGGMON	OGGMON	OGGMON	IAS_TEMP	Oracle Platform Security Services (OPSS) Audit Services (IAU) Audit Services Append (IAU_APPEND) Audit Services Viewer (IAU_VIEWER)
Veridata Repository	VERIDATA	VERIDATA	VERIDATA_USER	VERIDATA_TEMP	Oracle Platform Security Services (OPSS) Audit Services (IAU) Audit Services Append (IAU_APPEND) Audit Services Viewer (IAU_VIEWER)
Oracle Enterprise Data Quality (EDQ)					
EDQ Config Repository	EDQCONFIG	EDQ_CONF	EDQ_CONF	EDQ_CONFTEMP	Oracle Platform Security Services (OPSS) Audit Services (IAU) Audit Services Append (IAU_APPEND) Audit Services Viewer (IAU_VIEWER)

Component	Schema Owner	Component ID	Default Tablespace	Temp Tablespace	Dependencies
EDQ Results Repository	EDQRESULTS	EDQ_RES	EDQ_RES	EDQ_RESTEMP	Oracle Platform Security Services (OPSS) Audit Services (IAU) Audit Services Append (IAU_APPEND) Audit Services Viewer (IAU_VIEWER) EDQ Config Repository (EDQCONFIG)
EDQ Staging Repository	EDQSTAGING	EDQ_STAGING	EDQ_STAGING	EDQ_STAGINGTEMP	Oracle Platform Security Services (OPSS) Audit Services (IAU) Audit Services Append (IAU_APPEND) Audit Services Viewer (IAU_VIEWER) EDQ Config Repository (EDQCONFIG) EDQ Results Repository (EDQRESULTS)

¹ For more information about the Service Table schema, see [Understanding the Service Table Schema](#).

Extending Repository Creation Utility to Configure Custom Application Repositories

This appendix describes the configuration XML files that can be used to generate custom schema creation and deletion scripts.

RCU provides an XML-based framework for component owners to plug in your schema creation and deletion scripts into RCU. This chapter provides some details of the configuration XML files and script-writing guidelines that are used to integrate your components with RCU.

The following topics are covered in this appendix:

- [RCU Integration Options](#)
- [RCU Configuration Files](#)
- [RCU Script Writing Guidelines](#)

C.1 RCU Integration Options

The following topics describe the options that RCU provides for integrating component scripts:

- [RCU JDBC Engine Compliant SQL*Plus Scripts](#)
- [Pure JDBC Scripts](#)
- [SQL*Plus Scripts](#)
- [External Processes](#)
- [Java Code Using JavaAction](#)

RCU JDBC Engine Compliant SQL*Plus Scripts is the recommended option for integrating component scripts. SQL*Plus and External Processes are only intended for integrating Legacy/Classic components such as Oracle Portal 10g or Identity Management. Components that have a dependency on SQL*Plus scripts cannot be loaded with RCU when running from the installed Oracle home. They can only be used when running RCU from CD.

C.1.1 RCU JDBC Engine Compliant SQL*Plus Scripts

The RCU JDBC Engine emulates a set of SQL*Plus features over JDBC. This set is broad enough to cover the requirements of schema creation. Your component teams can integrate existing SQL*Plus scripts with a few minor changes.

The RCU JDBC Engine parses the SQL*Plus script to get individual statements and then runs each statement over JDBC. Command line arguments to scripts and

substitution using DEFINE variables are supported. Script can be nested (for example, one script can call other scripts). Component teams can specify list of expected errors and fatal errors to RCU through configuration files and RCU would interpret these when running the scripts.

These scripts are easy to maintain and use as they can be run in SQL*Plus in development environment. However, Oracle recommends that the RCU JDBC Engine tool is also used in your development environment to ensure that these scripts run properly when integrated with RCU.

C.1.2 Pure JDBC Scripts

This option is recommended for non-Oracle databases (for Oracle databases, RCU JDBC Engine Compliant SQL*Plus scripts should be used). Contents of the script file should be a valid PL/SQL block, which can be called with `Connection.prepareStatement()` or `Connection.createStatement()`. Standard JDBC Bind variables with '?' convention are supported.

Some disadvantages of this option are:

- No nested scripts, which can mean a larger number of scripts.
- May require a more significant re-work for component teams to re-write the scripts in this format.
- Difficult to maintain as every DDL statement has to be wrapped with in EXECUTE IMMEDIATE.
- Cannot be run using SQL*Plus in development environment.
- Less useful error support since the whole block would fail in case of any errors.

Below is an example:

```
<Action TYPE="JDBC" PERCENT_PROGRESS="20">
  <ValidIf DBTYPE="ORACLE" />
  <Command TYPE="INLINE">DROP USER %SCHEMA_USER% CASCADE</Command>
</Action>
```

And a second example:

```
<Action TYPE="Java" PERCENT_PROGRESS="100">
  <Command TYPE="METHOD">
    oracle.ias.version.SchemaVersionUtil:utilSetComponentValid
  </Command>

  <Parameters>
    <Parameter TYPE="String">MDS</Parameter>
  </Parameters>
</Action>
```

C.1.3 SQL*Plus Scripts

This option is mainly for the consumption of legacy components that need to be loaded from RCU.

Example:

```
<Action TYPE="SQLPlus" PERCENT_PROGRESS="100">
  <Command TYPE="SCRIPT">%SCRIPT_HOME%/oid/scripts/seedldap.sql</Command>
  <IgnorableErrors>
```

```

        <Error Type="ORA-01918">user name does not exist</Error>
    </IgnorableErrors>
</Action>

```

And a second example:

```

<Action TYPE="JDBCScript" PERCENT_PROGRESS="20">
    <ValidIf DBTYPE="ORACLE" />
    <Command TYPE="SCRIPT">%SCRIPT_HOME%/mds/sql/mds_user.sql</Command>
    <Parameters>
        <Parameter TYPE="CmdLine">%SCHEMA_USER%</Parameter>
        <Parameter TYPE="CmdLine">%SCHEMA_PASSWORD%</Parameter>
        <Parameter TYPE="CmdLine">%DEFAULT_TABLESPACE%</Parameter>
        <Parameter TYPE="CmdLine">%TEMPORARY_TABLESPACE%</Parameter>
    </Parameters>
</Action>

```

C.1.4 External Processes

This option is provided only for those components that have their own configuration tool for schema creation, like OPCA (Oracle Portal 10g). This is not a recommended option for any new component, as this option cannot make use of RCU error handling framework.

Example:

```

<Action TYPE="HostCmd">
    <Command TYPE="SCRIPT">%RCU_HOME%/rcu/integration/cdb/config/bin/configure</Command>
    <Parameters>
        <Parameter TYPE="ProcessInput">%JDBC_CONNECT_STRING%</Parameter>
        <Parameter TYPE="ProcessInput">%DBADMIN_USER%</Parameter>
        <Parameter TYPE="ProcessInput">%DBADMIN_PASSWORD%</Parameter>
        <Parameter TYPE="ProcessInput">%PREFIX_NAME%</Parameter>
        <Parameter TYPE="ProcessInput">%SCHEMA_USER%</Parameter>
        <Parameter TYPE="ProcessInput">%SCHEMA_PASSWORD%</Parameter>
        <Parameter TYPE="ProcessInput">%DEFAULT_TABLESPACE%</Parameter>
        <Parameter TYPE="ProcessInput">%TEMPORARY_TABLESPACE%</Parameter>
    </Parameters>
</Action>

```

C.1.5 Java Code Using JavaAction

This option is provided to components that have Java code, which can accept a JDBC connection and execute SQL statements. This is generally used when huge amounts of data has to be seeded or LOBs need to be created.

Example:

```

<Action TYPE="Java">
    <Command TYPE="METHOD">
        oracle.ias.version.SchemaVersionUtil:utilCreateRegistryEntry
    </Command>

    <Parameters>
        <Parameter TYPE="Connection"></Parameter>
        <Parameter TYPE="String">%SCHEMA_USER%</Parameter>
    </Parameters>
</Action>

```

A second example:

```
<Action TYPE="Java">
  <Command TYPE="METHOD">oracle.webdb.config.PortalConfigAssistant:main</Command>
  <Parameters>
    <Parameter TYPE="StringArray">-mode PORTAL -s %SCHEMA_USER% -p
    %DBADMIN_PASSWORD% -c %DB_HOSTNAME%:%DB_PORTNUMBER%:%DB_SERVICE% -silent -verbose -
    owa -u %DEFAULT_TABLESPACE% -t %TEMPORARY_TABLESPACE% -d %SCHEMA_USER%.DOC -l
    %SCHEMA_USER%.LOG -in %SCHEMA_USER%.IDX -demo -report -voh %RCU_HOME% -log
    %RCU_LOG_LOCATION% -oh %SQLPLUS_HOME% -mrc %PREFIX_NAME% -rcu </Parameter>
  </Parameters>
</Action>
```

C.2 RCU Configuration Files

RCU provides the following configuration files types for component integration:

- [XML DTDs Defined by RCU](#)
- [Component Repository Configuration File](#)
- [Component List Configuration File](#)
- [Soft-Prerequisite Support](#)
- [Default Tablespaces Configuration File](#)

C.2.1 XML DTDs Defined by RCU

This section describes the XML DTDs defined by RCU:

- [Component Descriptor Configuration File](#)
- [Repository Configuration File](#)
- [Master List of Supported Components](#)
- [Storage Attributes Configuration File](#)

C.2.1.1 Component Descriptor Configuration File

Each component owner would provide a configuration file adhering to following DTD, which lists the pre-requisites and actions:

The Component Descriptor configuration file is called `ComponentInfo.dtd` and is located in the `ORACLE_HOME/oracle_common/rcu/config` (on UNIX operating systems) or `ORACLE_HOME\oracle_common\rcu\config` (on Windows operating systems) directory:

```
<?xml version="1.0" encoding="UTF-8" ?>
<!ENTITY % commonDTD SYSTEM "RCUCommon.dtd">
%commonDTD;
<!ELEMENT ComponentInfo (Display, PrefixSettings, Component*,
PrerequisiteDescriptor*, ExecutionDescriptor?, FatalErrors?, IgnorableErrors?)>
<!--ATTN: ComponentInfo
      VERSION CDATA #REQUIRED
      TYPE CDATA #REQUIRED
      RESOURCE_BUNDLE_PACKAGE CDATA #IMPLIED-->
<!--ELEMENT PrefixSettings (DetectQuery*)-->
<!--ATTN: PrefixSettings
      USE_SCHEMA_PREFIX (TRUE|FALSE) "TRUE"
      USE_TABLESPACE_PREFIX (TRUE|FALSE) "TRUE"-->
<!--ELEMENT Component (ValidIfSet?, ValidIf?, Display, RepositoryConfigFile?,
```

```

DetectQuery*, SchemaVersion?, SchemaUser?, AdditionalSchemaUser*, Dependents?,
DatabaseName?, Tablespaces?, CustomVariables?)>
<!ATTLIST Component
    ID CDATA #REQUIRED
    PROGRESS_UNITS CDATA #IMPLIED
    IS_GROUPING_COMPONENT (TRUE|FALSE) "FALSE"
    DEFAULT_SELECTED (TRUE|FALSE) "FALSE"
    CHILD_OF CDATA #IMPLIED
    MANDATORY_SELECTED (TRUE|FALSE) "FALSE">
<!ELEMENT Display (#PCDATA)>
<!ATTLIST Display
    NLS_ID CDATA #IMPLIED>
<!ELEMENT RepositoryConfigFile (#PCDATA)>
<!ELEMENT DetectQuery (#PCDATA)>
<!ATTLIST DetectQuery
    OPERATION (CREATE|DROP) 'CREATE'
    TYPE (ORACLE|SQLSERVER|IBMDB2|EBR|MYSQL) 'ORACLE'>
<!ELEMENT SchemaVersion (#PCDATA)>
<!ELEMENT SchemaUser (#PCDATA)>
<!ATTLIST SchemaUser
    USER_EDITABLE (TRUE|FALSE) "TRUE"
    PREFIXABLE (TRUE|FALSE) "TRUE"
    IS_CREATED (TRUE|FALSE) "TRUE"
    MAX_LENGTH CDATA "30">
<!ELEMENT AdditionalSchemaUser (#PCDATA)>
<!ATTLIST AdditionalSchemaUser
    STARTS_WITH_SCHEMA_USER (TRUE|FALSE) "TRUE" >
<!ELEMENT Dependents (Dependent*)>
<!ELEMENT Dependent (#PCDATA)>
<!ATTLIST Dependent
    COMPONENT_ID CDATA #REQUIRED
    ALT_COMPONENT_ID CDATA #IMPLIED>
<!ELEMENT DatabaseName (#PCDATA)>
<!ELEMENT Tablespaces (Tablespace*)>
<!ATTLIST Tablespace TYPE (DEFAULT_TABLESPACE|TEMPORARY_TABLESPACE|
ADDITIONAL_TABLESPACE1|ADDITIONAL_TABLESPACE2|ADDITIONAL_TABLESPACE3|
ADDITIONAL_TABLESPACE4|ADDITIONAL_TABLESPACE5|ADDITIONAL_TABLESPACE6|
ADDITIONAL_TABLESPACE7|ADDITIONAL_TABLESPACE8|ADDITIONAL_TABLESPACE9|
ADDITIONAL_TABLESPACE10|ADDITIONAL_TABLESPACE11|ADDITIONAL_TABLESPACE12|
ADDITIONAL_TABLESPACE13|ADDITIONAL_TABLESPACE14|ADDITIONAL_TABLESPACE15|
ADDITIONAL_TABLESPACE16|ADDITIONAL_TABLESPACE17|ADDITIONAL_TABLESPACE18|
ADDITIONAL_TABLESPACE19|ADDITIONAL_TABLESPACE20|ADDITIONAL_TABLESPACE21|
ADDITIONAL_TABLESPACE22|ADDITIONAL_TABLESPACE23|ADDITIONAL_TABLESPACE24|
ADDITIONAL_TABLESPACE25|ADDITIONAL_TABLESPACE26|ADDITIONAL_TABLESPACE27|
ADDITIONAL_TABLESPACE28|ADDITIONAL_TABLESPACE29|ADDITIONAL_TABLESPACE30|
ADDITIONAL_TABLESPACE31) "DEFAULT_TABLESPACE">
<!ELEMENT Tablespace (Prompt, TablespaceName)>
<!ELEMENT Prompt (#PCDATA)>
<!ATTLIST Prompt NLS_ID CDATA #IMPLIED>
<!ELEMENT TablespaceName (#PCDATA)>
<!ELEMENT CustomVariables (Variable*)>
<!ATTLIST Variable
    TYPE (STRING|NUMBER|PASSWORD|EXISTING_PASSWORD|FILE) "STRING"
    MAX_LENGTH CDATA "30"
    MIN_LENGTH CDATA "0"
    OPERATION (CREATE|DROP|BOTH) "BOTH"
    DEFAULT_VALUE CDATA "">
<!ELEMENT Variable (Name,Display)><!ELEMENT Name (#PCDATA)>

```

C.2.1.2 Repository Configuration File

The Repository configuration file is called `RepositoryConfig.dtd` and is located in the `ORACLE_HOME/oracle_common/rcu/config` (on UNIX operating systems) or `ORACLE_HOME\oracle_common\rcu\config` (on Windows operating systems) directory:

```
<?xml version="1.0" encoding="UTF-8" ?>
<!ENTITY % commonDTD SYSTEM "RCUCommon.dtd">
%commonDTD;
<!ELEMENT RepositoryConfig (PrerequisiteDescriptor*, ExecutionDescriptor,
DeleteDescriptor?)>
<!ATTLIST RepositoryConfig
    COMP_ID CDATA #REQUIRED>
<!ELEMENT DeleteDescriptor (Action*)>
```

C.2.1.3 Master List of Supported Components

RCU maintains a master list of supported components, which contains entries for each supported component. Every time a new component is added, the master list of supported components is updated with the reference of the XML integration file provided by component owner.

This configuration file is called `RCUCommon.dtd` and is located in the `ORACLE_HOME/oracle_common/rcu/config` (on UNIX operating systems) or `ORACLE_HOME\oracle_common\rcu\config` (on Windows operating systems) directory:

```
<?xml version="1.0" encoding="UTF-8" ?>
<!ELEMENT PrerequisiteDescriptor (DBPrerequisiteSet*, DBPrerequisite*>
<!ATTLIST PrerequisiteDescriptor
    TYPE (CREATE|DROP|REGISTER|DEREGISTER|SYSTEMLOAD|DATALOAD) 'CREATE'>
<!ELEMENT DBPrerequisiteSet (ValidIfSet?, ValidIf?, PrereqSetErrorMsg?,
DBPrerequisite*)>
<!ATTLIST DBPrerequisiteSet
    OPERATOR (OR|AND) "OR"
    SOFT (TRUE|FALSE) "FALSE">
<!ELEMENT DBPrerequisite (ValidIfSet?, ValidIf?, PrereqIdentifier, PrereqValue,
PrereqErrorMsg?)>
<!ATTLIST DBPrerequisite
    PREREQ_TYPE (InitParameter|DBOption|Java|DBComponent|DBVersion|DBObject|CustomSQL|
TablespaceFreeMB) "CustomSQL"
    DATA_TYPE (STRING|NUMBER|VERSION) "STRING"
    COMPARE_OPERATOR (EQ|GT|LT|NE|GE|LE|COMPARE_VERSION) "EQ"
    SOFT (TRUE|FALSE) "FALSE">

<!ELEMENT PrereqIdentifier (#PCDATA)>
<!ELEMENT PrereqValue (#PCDATA)>
<!ELEMENT PrereqSetErrorMsg (#PCDATA)>
<!ATTLIST PrereqSetErrorMsg
    NLS_ID CDATA #IMPLIED>
<!ELEMENT PrereqErrorMsg (#PCDATA)>
<!ATTLIST PrereqErrorMsg
    NLS_ID CDATA #IMPLIED>
<!ATTLIST PrereqValue
    UNIT (KB|MB|NoUnit) 'NoUnit'>
<!ELEMENT ExecutionDescriptor (Action*)>
<!ATTLIST ExecutionDescriptor
    TYPE (Load|PreLoad|PostLoad|DataLoad|PostDataLoad) "Load">
<!ELEMENT Action (ValidIfSet?, ValidIf?, Command, Parameters?, FatalErrors?,
IgnorableErrors?)>
```



```

<!ATTLIST Action
    TYPE (JDBCScript|JDBC|SQLPlus|HostCmd|Java) "JDBCScript"
    DB_VERSION CDATA #IMPLIED
    PERCENT_PROGRESS CDATA #IMPLIED
    CONNECT_AS_OWNER (TRUE|FALSE) "FALSE"
    CONNECT_AS_REGISTRYOWNER (TRUE|FALSE) "FALSE"
    RESET_SESSION (TRUE|FALSE) "FALSE">
<!ELEMENT Command (#PCDATA)>
<!ATTLIST Command
    TYPE (SCRIPT|INLINE|METHOD) "SCRIPT">
<!ELEMENT Parameters (Parameter*)>
<!ELEMENT Parameter (#PCDATA)>
<!ATTLIST Parameter
    TYPE (BindVar|CmdLine|ProcessInput|EnvVar|Connection|int|String|StringArray|
boolean) "CmdLine">
<!ELEMENT FatalErrors (Error*)>
<!ELEMENT IgnorableErrors (Error*)>
<!ELEMENT Error (#PCDATA)>
<!ATTLIST Error
    Type CDATA #REQUIRED>
<!ELEMENT ValidIfSet (ValidIf*)>
<!ATTLIST ValidIfSet
    DBTYPE CDATA #IMPLIED
    DBVERSION CDATA #IMPLIED
    OSNAME CDATA #IMPLIED
    OPERATION_TYPE CDATA "ALL"
    OPERATOR (OR|AND) "OR">
<!ELEMENT ValidIf (CustomQueryFilter?)>
<!ATTLIST ValidIf
    DBTYPE CDATA #IMPLIED
    DBVERSION CDATA #IMPLIED
    OSNAME CDATA #IMPLIED
    OPERATION_TYPE CDATA "ALL">
<!ELEMENT CustomQueryFilter (#PCDATA)>
<!ATTLIST CustomQueryFilter
    DATA_TYPE (STRING|NUMBER) "STRING"
    COMPARE_OPERATOR (EQ|GT|LT|NE|GE|LE|COMPARE_VERSION) "EQ"
    VALUE CDATA #REQUIRED >

```

C.2.1.4 Storage Attributes Configuration File

RCU maintains the list of tablespaces/datafiles and their attributes to be created. This way the tablespaces and datafiles attributes can be modified externally.

The Storage Attributes configuration file is called `Storage.dtd` and is located in the `ORACLE_HOME/oracle_common/rcu/config` (on UNIX operating systems) or `ORACLE_HOME\oracle_common\rcu\config` (on Windows operating systems) directory:

```

<?xml version="1.0" encoding="UTF-8" ?>
<!ELEMENT StorageAttributes ( ComponentStorageFiles?, TablespaceAttributes*)>
<!ELEMENT ComponentStorageFiles (StorageFile*)>
<!ATTLIST StorageFile
    ID CDATA #REQUIRED>
<!ELEMENT StorageFile (#PCDATA)>
<!ELEMENT TablespaceAttributes (ValidIfSet?,
ValidIf?,Type?,DefaultTemp?,BlockSize?,ExtentSize?,PageSize?,AutoResize?,IncreaseSize
?,MaxSize?,Bigfile?,AutoSegmentSpaceManagement?, DatafilesList)>
<!ATTLIST TablespaceAttributes
    NAME CDATA #REQUIRED
    OMF (TRUE|FALSE) "FALSE">

```

```
<!--ELEMENT ValidIfSet (ValidIf*)-->
<!--ATTLIST ValidIfSet
    DBTYPE CDATA #IMPLIED
    DBVERSION CDATA #IMPLIED
    OSNAME CDATA #IMPLIED
    OPERATOR (OR|AND) "OR"-->
<!--ELEMENT ValidIf (CustomQueryFilter?)-->
<!--ATTLIST ValidIf
    DBTYPE CDATA #IMPLIED
    DBVERSION CDATA #IMPLIED
    OSNAME CDATA #IMPLIED -->
<!--ELEMENT Type (#PCDATA)-->
<!--ELEMENT DefaultTemp (#PCDATA)-->
<!--ELEMENT BlockSize (#PCDATA)-->
<!--ELEMENT ExtentSize (#PCDATA)-->
<!--ELEMENT PageSize (#PCDATA)-->
<!--ATTLIST PageSize
    UNIT (KB|NoUnit) 'KB'-->
<!--ELEMENT AutoResize (#PCDATA)-->
<!--ELEMENT IncreaseSize (#PCDATA)-->
<!--ATTLIST IncreaseSize
    UNIT (KB|MB|GB) 'MB'-->
<!--ELEMENT MaxSize (#PCDATA)-->
<!--ATTLIST MaxSize
    UNIT (KB|MB|GB) 'MB'-->
<!--ELEMENT Bigfile (#PCDATA)-->
<!--ELEMENT AutoSegmentSpaceManagement (#PCDATA)-->
<!--ELEMENT DatafilesList (DatafileAttributes+)-->
<!--ELEMENT DatafileAttributes (Size, Reuse?, AutoExtend?, Increment?, Maxsize?)-->
<!--ATTLIST DatafileAttributes
    ID CDATA #REQUIRED-->
<!--ELEMENT Size (#PCDATA)-->
<!--ATTLIST Size
    UNIT (KB|MB|GB) 'MB'-->
<!--ELEMENT Reuse (#PCDATA)-->
<!--ELEMENT AutoExtend (#PCDATA)-->
<!--ELEMENT Increment (#PCDATA)-->
<!--ATTLIST Increment
    UNIT (KB|MB|GB) 'KB'-->
<!--ELEMENT Maxsize (#PCDATA)-->
<!--ATTLIST Maxsize
    UNIT (KB|MB|GB) 'MB'-->
```

C.2.2 Component Repository Configuration File

A Component Repository Configuration File (*component.xml*) lists the pre-requisites and the list of scripts or actions that need to be performed to load or drop a schema. This file is provided and maintained by component owners. This configuration file is referenced from the [Component List Configuration File](#) (*ComponentInfo.xml*).

Each *component.xml* file can be found in the *ORACLE_HOME/oracle_common/rcu/integrationcomponent/component.xml* (on UNIX operating systems) or *ORACLE_HOME\oracle_common\rcu\integrationcomponent\component.xml* (on Windows operating systems) file.

Component owners can use a set of predefined RCU parameters which will be substituted at runtime by RCU based on user input. Here is the list of predefined parameters:

Table C-1 *Predefined RCU Parameters*

RCU Parameter	Description
%ORACLE_HOME%	Location of the Oracle home directory.
%SCRIPT_HOME%	Location where scripts are located. It may be same as <i>ORACLE_HOME</i> .
%SCHEMA_USER%	Database schema name (owner) entered by the user in RCU.
%SCHEMA_PASSWORD%	Database schema password entered by the user in RCU.
%ADDITIONAL_SCHEMA_USER%	Additional schema users as defined in the <i>ComponentInfo.xml</i> file
%ADDITIONAL_SCHEMA_PASSWORD<n>% %	Password for the additional schema users.
%DEFAULT_TABLESPACE%	Default tablespace assigned to the component by the user.
%TEMPORARY_TABLESPACE%	Temporary tablespace assigned to the component by the user.
%ADDITIONAL_TABLESPACE<n>%	Additional tablespace assigned to the component by the user. Up to three additional tablespaces are supported.
%DEFAULT_PERMANENT_TABLESPACE%	Default permanent tablespace in the database (for example, <i>USERS</i> or <i>SYSTEM</i>) if none is set.
%DEFAULT_TEMP_TABLESPACE%	Default temporary tablespace in the database (for example, <i>TEMP</i> in Oracle shipped databases or <i>SYSTEM</i>) if none is set.
%DATAFILE_LOCATION%	Default location where the tablespace/datafile will be created.
%JDBC_CONNECT_STRING%	JDBC connect string.
%PREFIX_NAME%	User-specified prefix for schema and tablespace names.
%CONNECTION%	Already-connected <i>java.sql.Connection</i> object to be passed into <i>JavaAction</i> .
%DBADMIN_USER%	Database admin user that is provided on the Database Connection Details .
%DBADMIN_PASSWORD%	Database admin user password that is provided on the Database Connection Details .
%DBADMIN_ROLE%	Database admin user role that is provided on the Database Connection Details .
%DB_HOSTNAME%	Database hostname that is provided on the Database Connection Details .
%DB_SERVICE%	Database service name.
%DB_PORTNUMBER%	Database port number that is provided on the Database Connection Details .
%RCU_HOME%	Directory where RCU is installed.
%SQLPLUS_HOME%	<i>ORACLE_HOME</i> where <i>SQL*Plus</i> is located.
%RCU_LOG_LOCATION%	Location of the directory where RCU log files are created.
%DATABASE_NAME%	Database name (for <i>SQLServer</i> database).

Below is a sample Component Repository Configuration file for OPSS (opss.xml), which lists the series of prerequisites and actions:

```
<?xml version="1.0" encoding="UTF-8" ?>

<!DOCTYPE RepositoryConfig SYSTEM "RepositoryConfig.dtd">
<RepositoryConfig COMP_ID="OPSS">

  <!-- Prerequisites for OPSS -->
  <PrerequisiteDescriptor>
    <!-- ORACLE Prerequisites -->
    <DBPrerequisite PREREQ_TYPE="TablespaceFreeMB" DATA_TYPE="NUMBER"
      COMPARE_OPERATOR="GT">
      <ValidIf DBTYPE="ORACLE" />
      <PrereqIdentifier>%DEFAULT_TABLESPACE%</PrereqIdentifier>
      <PrereqValue>50</PrereqValue>
    </DBPrerequisite>
    <DBPrerequisite PREREQ_TYPE="TablespaceFreeMB" DATA_TYPE="NUMBER"
      COMPARE_OPERATOR="GT">
      <ValidIf DBTYPE="ORACLE" />
      <PrereqIdentifier>%TEMPORARY_TABLESPACE%</PrereqIdentifier>
      <PrereqValue>50</PrereqValue>
    </DBPrerequisite>

    <!-- ORACLE EBR Prerequisites -->
    <DBPrerequisite PREREQ_TYPE="TablespaceFreeMB" DATA_TYPE="NUMBER"
      COMPARE_OPERATOR="GT">
      <ValidIf DBTYPE="EBR" />
      <PrereqIdentifier>%DEFAULT_TABLESPACE%</PrereqIdentifier>
      <PrereqValue>50</PrereqValue>
    </DBPrerequisite>
    <DBPrerequisite PREREQ_TYPE="TablespaceFreeMB" DATA_TYPE="NUMBER"
      COMPARE_OPERATOR="GT">
      <ValidIf DBTYPE="EBR" />
      <PrereqIdentifier>%TEMPORARY_TABLESPACE%</PrereqIdentifier>
      <PrereqValue>50</PrereqValue>
    </DBPrerequisite>

    <!-- SQLServer Prerequisites -->

    <!-- DB2 Prerequisites -->

  </PrerequisiteDescriptor>

  <PrerequisiteDescriptor TYPE="DROP">
    <!-- ORACLE Prerequisites -->
    <DBPrerequisite PREREQ_TYPE="CustomSQL" DATA_TYPE="NUMBER"
      COMPARE_OPERATOR="EQ">
      <ValidIf DBTYPE="ORACLE" />
      <PrereqIdentifier>
        select count(*) from v$session where username='%SCHEMA_USER%'
      </PrereqIdentifier>
      <PrereqValue>0</PrereqValue>
      <PrereqErrorMsg>
        The schema owner %SCHEMA_USER% is connected to the
        database. Please disconnect and try again.
      </PrereqErrorMsg>
    </DBPrerequisite>

    <!-- ORACLE EBR Prerequisites -->
    <DBPrerequisite PREREQ_TYPE="CustomSQL" DATA_TYPE="NUMBER"
```

```

COMPARE_OPERATOR="EQ">
    <ValidIf DBTYPE="EBR" />
    <PrereqIdentifier>select count(*) from v$session where
username='%SCHEMA_USER%'</PrereqIdentifier>
    <PrereqValue>0</PrereqValue>
    <PrereqErrorMsg NLS_ID="WC_USER_CONNECTED">The schema owner
%SCHEMA_USER% is connected to the database. Please disconnect and try again.</
PrereqErrorMsg>
    </DBPrerequisite>

<!-- SQLServer Prerequisites -->

<!-- DB2 Prerequisites -->

</PrerequisiteDescriptor>

<!-- Creating the OPSS Schema and Setting it to valid in the Registry -->
<ExecutionDescriptor>
    <Action TYPE="Java" PERCENT_PROGRESS="20">
        <Command
TYPE="METHOD">oracle.ias.version.SchemaVersionUtil:utilCreateRegistryEntry</Command>
        <Parameters>
            <Parameter TYPE="Connection"></Parameter>
            <Parameter TYPE="String">OPSS</Parameter>
            <Parameter TYPE="String">Oracle Platform Security Services</Parameter>
            <Parameter TYPE="String">%PREFIX_NAME%</Parameter>
            <Parameter TYPE="String">OPSS</Parameter>
            <Parameter TYPE="String">OPSS</Parameter>
            <Parameter TYPE="String">%SCHEMA_USER%</Parameter>
            <Parameter TYPE="String">12.1.2.0.0</Parameter>
            <Parameter TYPE="String">LOADING</Parameter>
        </Parameters>
    </Action>
    <Action TYPE="JDBCScript" PERCENT_PROGRESS="40">
        <ValidIf DBTYPE="ORACLE" />
        <Command TYPE="SCRIPT">%SCRIPT_HOME%/opss/scripts/opss_user.sql</Command>
        <Parameters>
            <Parameter TYPE="CmdLine">%SCHEMA_USER%</Parameter>
            <Parameter TYPE="CmdLine">%SCHEMA_PASSWORD%</Parameter>
            <Parameter TYPE="CmdLine">%DEFAULT_TABLESPACE%</Parameter>
            <Parameter TYPE="CmdLine">%TEMPORARY_TABLESPACE%</Parameter>
        </Parameters>
        <IgnorableErrors>
            <Error Type="ORA-01918">user name does not exist</Error>
        </IgnorableErrors>
    </Action>
    <Action TYPE="JDBCScript" PERCENT_PROGRESS="20">
        <ValidIf DBTYPE="EBR" />
        <Command TYPE="SCRIPT">%SCRIPT_HOME%/opss/scripts/oracleEbr/opss_user.sql</
Command>
        <Parameters>
            <Parameter TYPE="CmdLine">%SCHEMA_USER%</Parameter>
            <Parameter TYPE="CmdLine">%SCHEMA_PASSWORD%</Parameter>
            <Parameter TYPE="CmdLine">%DEFAULT_TABLESPACE%</Parameter>
            <Parameter TYPE="CmdLine">%TEMPORARY_TABLESPACE%</Parameter>
            <Parameter TYPE="CmdLine">%EDITION_NAME%</Parameter>
        </Parameters>
        <IgnorableErrors>
            <Error Type="ORA-01918">user name does not exist</Error>

```

```

        </IgnorableErrors>
    </Action>

    <Action TYPE="JDBCScript" PERCENT_PROGRESS="40">
        <ValidIf DBTYPE="SQLSERVER" />
        <Command TYPE="SCRIPT">%SCRIPT_HOME%/opss/scripts/sqlserver/opss_user.sql</
Command>
        <Parameters>
            <Parameter TYPE="CmdLine">%SCHEMA_USER%</Parameter>
            <Parameter TYPE="CmdLine">%SCHEMA_PASSWORD%</Parameter>
            <Parameter TYPE="CmdLine">%DATABASE_NAME%</Parameter>
        </Parameters>
    </Action>

    <Action TYPE="JDBCScript" PERCENT_PROGRESS="40">
        <ValidIf DBTYPE="IBMDB2" />
        <Command TYPE="SCRIPT">%SCRIPT_HOME%/opss/scripts/db2/opss_user.sql</
Command>
        <Parameters>
            <Parameter TYPE="CmdLine">%SCHEMA_USER%</Parameter>
            <Parameter TYPE="CmdLine">%DEFAULT_TABLESPACE%</Parameter>
            <Parameter TYPE="CmdLine">%SCHEMA_USER%</Parameter>
        </Parameters>
    </Action>

    <Action TYPE="JDBCScript" PERCENT_PROGRESS="60">
        <ValidIf DBTYPE="ORACLE" />
        <Command TYPE="SCRIPT">%SCRIPT_HOME%/opss/scripts/opss_tables.sql</Command>
        <Parameters>
            <Parameter TYPE="CmdLine">%SCHEMA_USER%</Parameter>
        </Parameters>
        <IgnorableErrors>
            <Error Type="ORA-00942">table or view does not exist</Error>
        </IgnorableErrors>
    </Action>

    <Action TYPE="JDBCScript" PERCENT_PROGRESS="60">
        <ValidIf DBTYPE="EBR" />
        <Command TYPE="SCRIPT">%SCRIPT_HOME%/opss/scripts/oracleEbr/
opss_tables.sql</Command>
        <Parameters>
            <Parameter TYPE="CmdLine">%SCHEMA_USER%</Parameter>
            <Parameter TYPE="CmdLine">%EDITION_NAME%</Parameter>
        </Parameters>
        <IgnorableErrors>
            <Error Type="ORA-00942">table or view does not exist</Error>
        </IgnorableErrors>
    </Action>

    <Action TYPE="JDBCScript" PERCENT_PROGRESS="60">
        <ValidIf DBTYPE="SQLSERVER" />
        <Command TYPE="SCRIPT">%SCRIPT_HOME%/opss/scripts/sqlserver/
opss_tables.sql</Command>
        <Parameters>
            <Parameter TYPE="CmdLine">%DATABASE_NAME%</Parameter>
        </Parameters>
    </Action>

    <Action TYPE="JDBCScript" PERCENT_PROGRESS="60">
        <ValidIf DBTYPE="IBMDB2" />
        <Command TYPE="SCRIPT">%SCRIPT_HOME%/opss/scripts/db2/opss_tables.sql</
Command>
        <Parameters>
            <Parameter TYPE="CmdLine">%SCHEMA_USER%</Parameter>

```

```

        <Parameter TYPE="CmdLine">%DEFAULT_TABLESPACE%/Parameter>
        <Parameter TYPE="CmdLine">%TEMPORARY_TABLESPACE%/Parameter>
    </Parameters>
</Action>

<Action TYPE="JDBCScript" PERCENT_PROGRESS="70">
    <ValidIf DBTYPE="ORACLE" />
    <Command TYPE="SCRIPT">%SCRIPT_HOME%/opss/scripts/opss_version.sql</Command>
    <Parameters>
        <Parameter TYPE="CmdLine">%SCHEMA_USER%/Parameter>
    </Parameters>
</Action>
<Action TYPE="JDBCScript" PERCENT_PROGRESS="70">
    <ValidIf DBTYPE="EBR" />
    <Command TYPE="SCRIPT">%SCRIPT_HOME%/opss/scripts/oracleEbr/
opss_version.sql</Command>
    <Parameters>
        <Parameter TYPE="CmdLine">%SCHEMA_USER%/Parameter>
        <Parameter TYPE="CmdLine">%EDITION_NAME%/Parameter>
    </Parameters>
</Action>

<Action TYPE="JDBCScript" PERCENT_PROGRESS="70">
    <ValidIf DBTYPE="SQLSERVER" />
    <Command TYPE="SCRIPT">%SCRIPT_HOME%/opss/scripts/sqlserver/
opss_version.sql</Command>
    <Parameters>
        <Parameter TYPE="CmdLine">%DATABASE_NAME%/Parameter>
    </Parameters>
</Action>
<Action TYPE="JDBCScript" PERCENT_PROGRESS="70">
    <ValidIf DBTYPE="IBMDB2" />
    <Command TYPE="SCRIPT">%SCRIPT_HOME%/opss/scripts/db2/opss_version.sql</
Command>
    <Parameters>
        <Parameter TYPE="CmdLine">%SCHEMA_USER%/Parameter>
    </Parameters>
</Action>

<Action TYPE="JDBCScript" PERCENT_PROGRESS="80">
    <ValidIf DBTYPE="ORACLE" />
    <Command TYPE="SCRIPT">%SCRIPT_HOME%/opss/scripts/opss_gencatalog.sql</
Command>
    <Parameters>
        <Parameter TYPE="CmdLine">%SCHEMA_USER%/Parameter>
    </Parameters>
</Action>

<Action TYPE="JDBCScript" PERCENT_PROGRESS="80">
    <ValidIf DBTYPE="SQLSERVER" />
    <Command TYPE="SCRIPT">%SCRIPT_HOME%/opss/scripts/sqlserver/
opss_gencatalog.sql</Command>
    <Parameters>
        <Parameter TYPE="CmdLine">%DATABASE_NAME%/Parameter>
    </Parameters>
</Action>

<Action TYPE="JDBCScript" PERCENT_PROGRESS="80">
    <ValidIf DBTYPE="IBMDB2" />
    <Command TYPE="SCRIPT">%SCRIPT_HOME%/opss/scripts/db2/opss_gencatalog.sql</
Command>

```

```

        <Parameters>
            <Parameter TYPE="CmdLine">%SCHEMA_USER%/Parameter>
        </Parameters>
    </Action>

    <Action TYPE="JDBCScript" PERCENT_PROGRESS="80">
        <ValidIf DBTYPE="EBR" />
        <Command TYPE="SCRIPT">%SCRIPT_HOME%/opss/scripts/oracleEbr/
opss_gencatalog.sql</Command>
        <Parameters>
            <Parameter TYPE="CmdLine">%SCHEMA_USER%/Parameter>
            <Parameter TYPE="CmdLine">%EDITION_NAME%/Parameter>
        </Parameters>
    </Action>
    <Action TYPE="JDBCScript" CONNECT_AS_OWNER="TRUE" PERCENT_PROGRESS="100">
        <ValidIf DBTYPE="ORACLE" />
        <Command TYPE="SCRIPT">%SCRIPT_HOME%/opss/scripts/upgd_mgmt_schema.sql</
Command>
    </Action>

    <Action TYPE="Java">
        <Command
TYPE="METHOD">oracle.ias.version.SchemaVersionUtil:utilSetComponentValid</Command>
        <Parameters>
            <Parameter TYPE="String">OPSS</Parameter>
        </Parameters>
    </Action>
</ExecutionDescriptor>

<!-- Deleting the OPSS Schema and removing it from the Registry -->
<DeleteDescriptor>
    <Action TYPE="JDBC" PERCENT_PROGRESS="50">
        <ValidIf DBTYPE="ORACLE" />
        <Command TYPE="INLINE">DROP USER %SCHEMA_USER% CASCADE</Command>
    </Action>
    <Action TYPE="JDBC" PERCENT_PROGRESS="50">
        <ValidIf DBTYPE="EBR" />
        <Command TYPE="INLINE">DROP USER %SCHEMA_USER% CASCADE</Command>
    </Action>

    <Action TYPE="JDBCScript" PERCENT_PROGRESS="20">
        <ValidIf DBTYPE="SQLSERVER" />
        <Command TYPE="SCRIPT">%SCRIPT_HOME%/opss/scripts/sqlserver/
opss_drop_table.sql</Command>
        <Parameters>
            <Parameter TYPE="CmdLine">%DATABASE_NAME%/Parameter>
        </Parameters>
    </Action>
    <Action TYPE="JDBCScript" PERCENT_PROGRESS="50">
        <ValidIf DBTYPE="SQLSERVER" />
        <Command TYPE="SCRIPT">%SCRIPT_HOME%/opss/scripts/sqlserver/
opss_drop_user.sql</Command>
        <Parameters>
            <Parameter TYPE="CmdLine">%DATABASE_NAME%/Parameter>
            <Parameter TYPE="CmdLine">%SCHEMA_USER%/Parameter>
        </Parameters>
    </Action>

    <Action TYPE="Java" PERCENT_PROGRESS="50">
        <ValidIf DBTYPE="IBMDB2" />
        <Command

```



```

TYPE="METHOD">oracle.sysman.assistants.common.dbutil.jdbc.DB2DropUtil:dropCompRepos</
Command>
    <Parameters>
        <Parameter TYPE="Connection"></Parameter>
        <Parameter TYPE="String">%SCHEMA_USER%</Parameter>
    </Parameters>
</Action>

    <Action TYPE="Java" PERCENT_PROGRESS="100">
        <Command
TYPE="METHOD">oracle.ias.version.SchemaVersionUtil:utilDropRegistryEntry</Command>
        <Parameters>
            <Parameter TYPE="Connection"></Parameter>
            <Parameter TYPE="String">OPSS</Parameter>
            <Parameter TYPE="String">%PREFIX_NAME%</Parameter>
            <Parameter TYPE="String">OPSS</Parameter>
        </Parameters>
    </Action>
</DeleteDescriptor>
</RepositoryConfig>

```

C.2.3 Component List Configuration File

The Component List configuration file (`ComponentInfo.xml`) lists all the components, their respective configuration files and their default user and tablespace mappings. This file also lists the high-level pre-requisite checks and high level actions (like creating `schema_version_registry` table) to be done globally for all the components. Also, a list of global Ignorable or Fatal errors can be specified.

Note:

RCU uses dynamic discovery to detect the available components. As a result, all of the components might not be listed in the Component List configuration file.

This file can be found in the `ORACLE_HOME/oracle_common/rcu/config` (on UNIX operating systems) or `ORACLE_HOME\oracle_common\rcu\config` (on Windows operating systems) directory.

Below is a sample `ComponentInfo.xml` file:

```

<?xml version="1.0" encoding="UTF-8" ?>
<!-- DOCTYPE ComponentInfo SYSTEM "dtds/ComponentInfo.dtd" -->
<!DOCTYPE ComponentInfo SYSTEM "ComponentInfo.dtd" []>
<ComponentInfo VERSION="11.0.0.0" TYPE="AS_REPOSITORY"
RESOURCE_BUNDLE_PACKAGE="oracle.sysman.rcu.as.ASBundle">
    <Display NLS_ID="ASREP_ID">Oracle AS Repository Components</Display>
    <PrefixSettings USE_SCHEMA_PREFIX="TRUE" USE_TABLESPACE_PREFIX="TRUE">
        <DetectQuery>
            Select distinct mrc_name from schema_version_registry
        </DetectQuery>
        <DetectQuery TYPE="IBMDB2">
            Select distinct mrc_name from NULLID.schema_version_registry
        </DetectQuery>
        <DetectQuery TYPE="JAVADB">
            Select distinct mrc_name from ORACLEFMW.schema_version_registry
        </DetectQuery>
    </PrefixSettings>

```

```

<!-- AS Common GROUP START -->
<Component ID="AS_COMMON" IS_GROUPING_COMPONENT="TRUE">
  <Display NLS_ID="AS_COMMON_ID">AS Common Schemas</Display>
</Component>

<Component ID="SOA" IS_GROUPING_COMPONENT="TRUE">
  <Display NLS_ID="SOA">SOA Suite</Display>
</Component>

<Component ID="ODI_REPOSITORIES" IS_GROUPING_COMPONENT="TRUE">
  <Display NLS_ID="ODI_REPOSITORIES">Oracle Data Integrator</Display>
</Component>

<ComponentConfigFiles>
  <ConfigFile ID="MDS">%RCU_HOME%/../oracle_common/common/sql/mds/
mds_ComponentInfo.xml</ConfigFile>
  <ConfigFile ID="IAU">%RCU_HOME%/../oracle_common/common/sql/iau/
iau_ComponentInfo.xml</ConfigFile>
  <ConfigFile ID="OPSS">%RCU_HOME%/../oracle_common/common/sql/opss/
opss_ComponentInfo.xml</ConfigFile>
  <ConfigFile ID="UCSMESSAGING">%RCU_HOME%/../oracle_common/common/sql/
ucs.messaging/ucs.messaging_ComponentInfo.xml</ConfigFile>
  <ConfigFile ID="WLS">%RCU_HOME%/../oracle_common/common/sql/wlsservices/
wlsservices_ComponentInfo.xml</ConfigFile>
  <ConfigFile ID="ESS">%RCU_HOME%/../oracle_common/common/sql/ess/
ess_ComponentInfo.xml</ConfigFile>
  <ConfigFile ID="SOAINFRA">%RCU_HOME%/../soa/common/sql/soainfra/
soainfra_ComponentInfo.xml</ConfigFile>
  <ConfigFile ID="ODI">%RCU_HOME%/../odi/common/sql/odi/odi_ComponentInfo.xml</
ConfigFile>
<ConfigFile ID="OER">%RCU_HOME%/../oer/common/sql/oer/oer_ComponentInfo.xml</
ConfigFile>
<ConfigFile ID="OWLCS">%RCU_HOME%/../oracle_common/common/sql/ucs.callcontrol/
ucs.callcontrol_ComponentInfo.xml</ConfigFile>
<ConfigFile ID="SVCTBL">%RCU_HOME%/../oracle_common/common/sql/svctbl/
svctbl_ComponentInfo.xml</ConfigFile>
<ConfigFile ID="MFT">%RCU_HOME%/../mft/common/sql/mft/mft_ComponentInfo.xml</
ConfigFile>
</ComponentConfigFiles>

<PrerequisiteDescriptor>
  <DBPrerequisiteSet OPERATOR="OR">
    <ValidIf DBTYPE="ORACLE" />
    <DBPrerequisite PREREQ_TYPE="InitParameter" DATA_TYPE="NUMBER"
COMPARE_OPERATOR="GE">
      <PrereqIdentifier>SHARED_POOL_SIZE</PrereqIdentifier>
      <PrereqValue UNIT="KB">147456</PrereqValue>
    </DBPrerequisite>
    <DBPrerequisite PREREQ_TYPE="InitParameter" DATA_TYPE="NUMBER"
COMPARE_OPERATOR="GE">
      <PrereqIdentifier>SGA_MAX_SIZE</PrereqIdentifier>
      <PrereqValue UNIT="KB">147456</PrereqValue>
    </DBPrerequisite>
  </DBPrerequisiteSet>

  <DBPrerequisiteSet OPERATOR="AND">
    <ValidIf DBTYPE="ORACLE" />
    <DBPrerequisite PREREQ_TYPE="CustomSQL" DATA_TYPE="NUMBER"

```

```

COMPARE_OPERATOR="EQ" SOFT="TRUE">
  <ValidIf DBTYPE="ORACLE">
    <CustomQueryFilter DATA_TYPE="NUMBER" COMPARE_OPERATOR="EQ" VALUE="1">
      select 1 from dual where exists (select column_name from dba_tab_columns
where table_name(+) like 'V_$INSTANCE' and column_name(+) = 'EDITION') union select
0 from dual where not exists (select column_name from dba_tab_columns where
table_name(+) like 'V_$INSTANCE' and column_name(+) = 'EDITION')
    </CustomQueryFilter>
  </ValidIf>
  <PrereqIdentifier>select count (*) from V_$INSTANCE where EDITION =
'XE'</PrereqIdentifier>
  <PrereqValue>0</PrereqValue>
  <PrereqErrorMsg>
    The database you are connecting is not a
supported version. Refer to the certification matrix for supported DB versions.
  </PrereqErrorMsg>
</DBPrerequisite>

<DBPrerequisite PREREQ_TYPE="CustomSQL" DATA_TYPE="NUMBER" COMPARE_OPERATOR="EQ">
  <ValidIf DBTYPE="ORACLE">
    <CustomQueryFilter DATA_TYPE="NUMBER" COMPARE_OPERATOR="EQ" VALUE="1">
      select 1 from dual where exists (select column_name from dba_tab_columns
where table_name(+) like 'V_$INSTANCE' and column_name(+) = 'EDITION') union select
0 from dual where not exists (select column_name from dba_tab_columns where
table_name(+) like 'V_$INSTANCE' and column_name(+) = 'EDITION')
    </CustomQueryFilter>
  </ValidIf>
  <PrereqIdentifier>select count(*) from product_component_version
where product like 'Oracle%Database%' AND version >= '12.0.0.0.0' AND version <<
'12.1.0.1.0'</PrereqIdentifier>
  <PrereqValue>0</PrereqValue>
  <PrereqErrorMsg>
    The database you are connecting is not a supported
version. Enter Database with version equal to or higher than 12.1.0.1.0 in 12c.
Refer to the certification matrix for supported DB versions.
  </PrereqErrorMsg>
</DBPrerequisite>

<DBPrerequisite PREREQ_TYPE="CustomSQL" DATA_TYPE="NUMBER" COMPARE_OPERATOR="EQ"
SOFT="TRUE">
  <ValidIf DBTYPE="ORACLE">
    <CustomQueryFilter DATA_TYPE="NUMBER" COMPARE_OPERATOR="EQ" VALUE="1">
      select 1 from dual where exists (select column_name from dba_tab_columns
where table_name(+) like 'V_$INSTANCE' and column_name(+) = 'EDITION') union select
0 from dual where not exists (select column_name from dba_tab_columns where
table_name(+) like 'V_$INSTANCE' and column_name(+) = 'EDITION')
    </CustomQueryFilter>
  </ValidIf>
  <PrereqIdentifier>select count(*) from product_component_version where product
like 'Oracle%Database%' AND version > '12.1.0.1.9'</PrereqIdentifier>
  <PrereqValue>0</PrereqValue>
  <PrereqErrorMsg>
    The database you are connecting to, is a more recent one than the supported
version. Refer to the certification matrix for supported DB versions.
  </PrereqErrorMsg>
</DBPrerequisite>
</DBPrerequisiteSet>

```

```

        <DBPrerequisite PREREQ_TYPE="InitParameter" DATA_TYPE="NUMBER"
COMPARE_OPERATOR="GE">
            <ValidIf DBTYPE="ORACLE" />
            <PrereqIdentifier>DB_BLOCK_SIZE</PrereqIdentifier>
            <PrereqValue UNIT="KB">8</PrereqValue>
        </DBPrerequisite>
        <!--DBPrerequisite PREREQ_TYPE="CustomSQL" DATA_TYPE="STRING"
COMPARE_OPERATOR="NE">
            <ValidIf DBTYPE="ORACLE" >
            <CustomQueryFilter DATA_TYPE="NUMBER" COMPARE_OPERATOR="EQ" VALUE="0">
                select 1 from dual where exists (select column_name from dba_tab_columns
where table_name(+) like 'V_$INSTANCE' and column_name(+) = 'EDITION') union select
0 from dual where not exists (select column_name from dba_tab_columns where
table_name(+) like 'V_$INSTANCE' and column_name(+) = 'EDITION')
            </CustomQueryFilter>
            </ValidIf>
            <PrereqIdentifier>version</PrereqIdentifier>
            <PrereqValue>11.1.0.6.0</PrereqValue>
            <PrereqErrorMsg>
                The database you are connecting is 11.1.0.6.0
version. 11.1.0.6.0 is not a supported version. The database version should be
11.1.0.7.0 or greater.
            </PrereqErrorMsg>
        </DBPrerequisite-->
        <DBPrerequisite PREREQ_TYPE="DBVersion" DATA_TYPE="STRING"
COMPARE_OPERATOR="GE">
            <ValidIf DBTYPE="ORACLE" >
            <CustomQueryFilter DATA_TYPE="NUMBER" COMPARE_OPERATOR="EQ" VALUE="0">
                select 1 from dual where exists (select column_name from dba_tab_columns
where table_name(+) like 'V_$INSTANCE' and column_name(+) = 'EDITION') union select
0 from dual where not exists (select column_name from dba_tab_columns where
table_name(+) like 'V_$INSTANCE' and column_name(+) = 'EDITION')
            </CustomQueryFilter>
            </ValidIf>
            <PrereqIdentifier>version</PrereqIdentifier>
            <PrereqValue>10.2.0.4.0</PrereqValue>
            <PrereqErrorMsg>
                The database you are connecting is not a supported version. Enter Database with
version equal to or higher than 10.2.0.4.0 in 10g or version equal to or higher than
11.1.0.7.0 in 11g. Refer to the certification matrix for supported DB versions
            </PrereqErrorMsg>
        </DBPrerequisite>

        <DBPrerequisite PREREQ_TYPE="CustomSQL" DATA_TYPE="NUMBER" COMPARE_OPERATOR="EQ">
            <ValidIf DBTYPE="ORACLE" >
            <CustomQueryFilter DATA_TYPE="NUMBER" COMPARE_OPERATOR="EQ" VALUE="0">
                select 1 from dual where exists (select column_name from dba_tab_columns
where table_name(+) like 'V_$INSTANCE' and column_name(+) = 'EDITION') union select
0 from dual where not exists (select column_name from dba_tab_columns where
table_name(+) like 'V_$INSTANCE' and column_name(+) = 'EDITION')
            </CustomQueryFilter>
            </ValidIf>
            <PrereqIdentifier>select count(*) from product_component_version where
product like 'Oracle%Database%' AND version BETWEEN '11' AND '11.1.0.6.0' </
PrereqIdentifier>
            <PrereqValue>0</PrereqValue>
            <PrereqErrorMsg>
                The database you are connecting is not a supported
version. Enter Database with version equal to or higher than 10.2.0.4.0 in 10g or
version equal to or higher than 11.1.0.7.0 in 11g. Refer to the certification matrix

```

```

for supported DB versions
    </PrereqErrorMsg>
</DBPrerequisite>

<DBPrerequisite PREREQ_TYPE="CustomSQL" DATA_TYPE="NUMBER" COMPARE_OPERATOR="EQ">
    <ValidIf DBTYPE="IBMDB2"/>
    <PrereqIdentifier>select count(*) from syscat.tablespace where tbspace
= 'SYSCATSPACE' and pagesize >= 32768
    </PrereqIdentifier>
    <PrereqValue>1</PrereqValue>
    <PrereqErrorMsg>
        Component      : RCU
        Error           : Database prerequisite check failed.
        Cause           : Database: '%DATABASE_NAME%' needs to be
configured with
                        default pagesize 32768 or 32K.
        Action          : Modify the default of the current database
or create a new
                        database with the required default pagesize.
    </PrereqErrorMsg>
</DBPrerequisite>

<DBPrerequisite PREREQ_TYPE="CustomSQL" DATA_TYPE="STRING" COMPARE_OPERATOR="EQ">
    <ValidIf DBTYPE="SQLSERVER" />
    <PrereqIdentifier>SELECT count(*) where
CAST(SERVERPROPERTY('productversion') as VARCHAR(20)) like '1.%' or
CAST(SERVERPROPERTY('productversion') as VARCHAR(20)) like '4.%' or
CAST(SERVERPROPERTY('productversion') as VARCHAR(20)) like '6.%' or
CAST(SERVERPROPERTY('productversion') as VARCHAR(20)) like '7.%' or
CAST(SERVERPROPERTY('productversion') as VARCHAR(20)) like '8.%'</PrereqIdentifier>
    <PrereqValue>0</PrereqValue>
    <PrereqErrorMsg>
        The database you are connecting is not a supported version. Enter
Database with version equal to or higher than 2005. Refer to the certification
matrix for supported DB versions.
    </PrereqErrorMsg>
</DBPrerequisite>

<DBPrerequisite PREREQ_TYPE="CustomSQL" DATA_TYPE="STRING" COMPARE_OPERATOR="EQ">
    <ValidIf DBTYPE="IBMDB2" />
    <PrereqIdentifier>select count(*) FROM TABLE
(sysproc.env_get_inst_info()) where INT(substr(service_level, POSSTR(service_level,
'v')+1, LOCATE('.', service_level, POSSTR(service_level, 'v') +1) -
POSSTR(service_level, 'v') -1 ) ) = 9 AND INT(substr(service_level,
POSSTR(service_level, '.')+1, LOCATE('.', service_level, POSSTR(service_level, '.')
+1) - POSSTR(service_level, '.') -1 ) ) < 7 OR INT(substr(service_level,
POSSTR(service_level, 'v')+1, LOCATE('.', service_level, POSSTR(service_level, 'v')
+1) - POSSTR(service_level, 'v') -1 ) ) < 9</PrereqIdentifier>
    <PrereqValue>0</PrereqValue>
    <PrereqErrorMsg>
        The database you are connecting is not a supported
version. Enter Database with version equal to or higher than 9.7. Refer to the
certification matrix for supported DB versions.
    </PrereqErrorMsg>
</DBPrerequisite>

<DBPrerequisite PREREQ_TYPE="CustomSQL" DATA_TYPE="STRING"
COMPARE_OPERATOR="EQ">
    <ValidIf DBTYPE="ORACLE" />

```

```

        <PrereqIdentifier>select GRANTED_ROLE from DBA_ROLE_PRIVS
where((GRANTED_ROLE='DBA' and GRANTEE=(select user from dual) and lower(SYS_CONTEXT
('USERENV', 'SESSION_USER'))='sys') OR(GRANTED_ROLE='DBA' and GRANTEE=(select user
from dual)))</PrereqIdentifier>
        <PrereqValue>DBA</PrereqValue>
        <PrereqErrorMsg>
        User should have sysdba or dba privileges.
        </PrereqErrorMsg>
    </DBPrerequisite>

<DBPrerequisite PREREQ_TYPE="CustomSQL" DATA_TYPE="STRING" COMPARE_OPERATOR="EQ">
    <ValidIf DBTYPE="SQLSERVER" />
    <PrereqIdentifier>select Is_Member('db_owner')</PrereqIdentifier>
    <PrereqValue>1</PrereqValue>
    <PrereqErrorMsg>
        User should have sysdba or dba privileges.
    </PrereqErrorMsg>
</DBPrerequisite>

    <DBPrerequisite PREREQ_TYPE="CustomSQL" DATA_TYPE="STRING"
COMPARE_OPERATOR="EQ" SOFT="TRUE">
        <ValidIf DBTYPE="ORACLE" />
        <PrereqIdentifier>select value from nls_database_parameters where
parameter = 'NLS_CHARACTERSET'</PrereqIdentifier>
        <PrereqValue>AL32UTF8</PrereqValue>
        <PrereqErrorMsg>
            The database you are connecting is with non-AL32UTF8
character set. Oracle strongly recommends using AL32UTF8 as the database character
set.
        </PrereqErrorMsg>
    </DBPrerequisite>

    <DBPrerequisite PREREQ_TYPE="CustomSQL" DATA_TYPE="NUMBER" COMPARE_OPERATOR="EQ"
SOFT="TRUE">
        <ValidIf DBTYPE="ORACLE" >
        <CustomQueryFilter DATA_TYPE="NUMBER" COMPARE_OPERATOR="EQ" VALUE="0">
            select 1 from dual where exists (select column_name from dba_tab_columns
where table_name(+) like 'V_$INSTANCE' and column_name(+) = 'EDITION') union select
0 from dual where not exists (select column_name from dba_tab_columns where
table_name(+) like 'V_$INSTANCE' and column_name(+) = 'EDITION')
        </CustomQueryFilter>
        </ValidIf>
        <PrereqIdentifier>select count(*) from product_component_version where
product like 'Oracle%Database%' AND version BETWEEN '10.2.0.6.0' AND '10.9.9.9.9' </
PrereqIdentifier>
        <PrereqValue>0</PrereqValue>
        <PrereqErrorMsg>
            The database you are connecting to, is a more recent than the
supported version. Refer to the certification matrix for supported DB versions.
        </PrereqErrorMsg>
    </DBPrerequisite>

    <DBPrerequisite PREREQ_TYPE="CustomSQL" DATA_TYPE="NUMBER"
COMPARE_OPERATOR="EQ" SOFT="TRUE">
        <ValidIf DBTYPE="ORACLE" >
        <CustomQueryFilter DATA_TYPE="NUMBER" COMPARE_OPERATOR="EQ" VALUE="0">
            select 1 from dual where exists (select column_name from dba_tab_columns
where table_name(+) like 'V_$INSTANCE' and column_name(+) = 'EDITION') union select
0 from dual where not exists (select column_name from dba_tab_columns where
table_name(+) like 'V_$INSTANCE' and column_name(+) = 'EDITION')

```

```

        </CustomQueryFilter>
    </ValidIf>
    <PrereqIdentifier>select count(*) from product_component_version where
product like 'Oracle%Database%' AND version > '11.1.0.7.0' AND version <=
'11.1.9.9.9'</PrereqIdentifier>
    <PrereqValue>0</PrereqValue>
    <PrereqErrorMsg>
        The database you are connecting to, is a more recent one than the
supported version. Refer to the certification matrix for supported DB versions.
    </PrereqErrorMsg>
</DBPrerequisite>

<DBPrerequisite PREREQ_TYPE="CustomSQL" DATA_TYPE="NUMBER"
COMPARE_OPERATOR="EQ" SOFT="TRUE">
    <ValidIf DBTYPE="ORACLE" >
        <CustomQueryFilter DATA_TYPE="NUMBER" COMPARE_OPERATOR="EQ" VALUE="0">
            select 1 from dual where exists (select column_name from dba_tab_columns
where table_name(+) like 'V_$INSTANCE' and column_name(+) = 'EDITION') union select
0 from dual where not exists (select column_name from dba_tab_columns where
table_name(+) like 'V_$INSTANCE' and column_name(+) = 'EDITION')
        </CustomQueryFilter>
    </ValidIf>
    <PrereqIdentifier>select count(*) from product_component_version where
product like 'Oracle%Database%' AND version between '11.2.0.4.0' AND '11.2.9.9.9' </
PrereqIdentifier>
    <PrereqValue>0</PrereqValue>
    <PrereqErrorMsg>
        The database you are connecting to, is a more recent one than the
supported version. Refer to the certification matrix for supported DB versions.
    </PrereqErrorMsg>
</DBPrerequisite>

<DBPrerequisite PREREQ_TYPE="CustomSQL" DATA_TYPE="NUMBER" COMPARE_OPERATOR="EQ">
    <ValidIf DBTYPE="ORACLE" >
        <CustomQueryFilter DATA_TYPE="NUMBER" COMPARE_OPERATOR="EQ" VALUE="0">
            select 1 from dual where exists (select column_name from dba_tab_columns
where table_name(+) like 'V_$INSTANCE' and column_name(+) = 'EDITION') union select
0 from dual where not exists (select column_name from dba_tab_columns where
table_name(+) like 'V_$INSTANCE' and column_name(+) = 'EDITION')
        </CustomQueryFilter>
    </ValidIf>
    <PrereqIdentifier>select count(*) from product_component_version
where product like 'Oracle%Database%' AND version between '11.2.0.0.0' AND
'11.2.0.2.9' </PrereqIdentifier>
    <PrereqValue>0</PrereqValue>
    <PrereqErrorMsg>
        The database you are connecting is not a supported
version. Enter Database with version equal to or higher than 11.2.0.3.0 in 11g.
Refer to the certification matrix for supported DB versions.
    </PrereqErrorMsg>
</DBPrerequisite>

<!--
<DBPrerequisite PREREQ_TYPE="CustomSQL" DATA_TYPE="NUMBER" COMPARE_OPERATOR="EQ"
SOFT="TRUE">
    <ValidIf DBTYPE="ORACLE" >
        <CustomQueryFilter DATA_TYPE="NUMBER" COMPARE_OPERATOR="EQ" VALUE="0">
            select 1 from dual where exists (select column_name from dba_tab_columns
where table_name(+) like 'V_$INSTANCE' and column_name(+) = 'EDITION') union select
0 from dual where not exists (select column_name from dba_tab_columns where
table_name(+) like 'V_$INSTANCE' and column_name(+) = 'EDITION')
        </CustomQueryFilter>

```

```

        </ValidIf>
        <PrereqIdentifier>select count(*) from product_component_version
where product like 'Oracle%Database%' AND version >= '12.2._._.' </
PrereqIdentifier>
        <PrereqValue>0</PrereqValue>
        <PrereqErrorMsg>
        The database you are connecting to, is a more recent one than the
supported version. Refer to the certification matrix for supported DB versions.
        </PrereqErrorMsg>
    </DBPrerequisite>

<DBPrerequisite PREREQ_TYPE="CustomSQL" DATA_TYPE="NUMBER" COMPARE_OPERATOR="EQ">
    <ValidIf DBTYPE="ORACLE" >
        <CustomQueryFilter DATA_TYPE="NUMBER" COMPARE_OPERATOR="EQ" VALUE="0">
            select 1 from dual where exists (select column_name from dba_tab_columns
where table_name(+) like 'V_$INSTANCE' and column_name(+) = 'EDITION') union select
0 from dual where not exists (select column_name from dba_tab_columns where
table_name(+) like 'V_$INSTANCE' and column_name(+) = 'EDITION')
        </CustomQueryFilter>
    </ValidIf>
    <PrereqIdentifier>select count(*) from product_component_version where product
like 'Oracle%Database%' AND version like '12.0._._.' </PrereqIdentifier>
    <PrereqValue>0</PrereqValue>
    <PrereqErrorMsg>
        The database you are connecting is not a supported
version. Enter Database with version equal to or higher than 12.1.0.0.0 in 12c.
Refer to the certification matrix for supported DB versions.
    </PrereqErrorMsg>
</DBPrerequisite>
-->

<DBPrerequisite PREREQ_TYPE="CustomSQL" DATA_TYPE="STRING" COMPARE_OPERATOR="EQ"
SOFT="TRUE">
    <ValidIf DBTYPE="SQLSERVER" />
    <PrereqIdentifier>SELECT count(*) where
CAST(SERVERPROPERTY('productversion') as VARCHAR(20)) not like '1.%' and
CAST(SERVERPROPERTY('productversion') as VARCHAR(20)) not like '4.%' and
CAST(SERVERPROPERTY('productversion') as VARCHAR(20)) not like '6.%' and
CAST(SERVERPROPERTY('productversion') as VARCHAR(20)) not like '7.%' and
CAST(SERVERPROPERTY('productversion') as VARCHAR(20)) not like '8.%' and
CAST(SERVERPROPERTY('productversion') as VARCHAR(20)) not like '9.%' and
CAST(SERVERPROPERTY('productversion') as VARCHAR(20)) not like '10.%' </
PrereqIdentifier>
    <PrereqValue>0</PrereqValue>
    <PrereqErrorMsg>
        The database you are connecting to, is a more recent than the
supported version. Refer to the certification matrix for supported DB versions.
    </PrereqErrorMsg>
</DBPrerequisite>

<DBPrerequisite PREREQ_TYPE="CustomSQL" DATA_TYPE="STRING"
COMPARE_OPERATOR="EQ" SOFT="TRUE">
    <ValidIf DBTYPE="IBMDB2" />
    <PrereqIdentifier>select count(*) FROM TABLE (sysproc.env_get_inst_info()) where
INT(substr(service_level, POSSTR(service_level, 'v')+1, LOCATE('.', service_level,
POSSTR(service_level, 'v') +1) - POSSTR(service_level, 'v') -1 )) = 9 and
INT(substr(service_level, POSSTR(service_level, '.')+1, LOCATE('.', service_level,
POSSTR(service_level, '.') +1) - POSSTR(service_level, '.') -1 )) > 7 or
INT(substr(service_level, POSSTR(service_level, 'v')+1, LOCATE('.', service_level,
POSSTR(service_level, 'v') +1) - POSSTR(service_level, 'v') -1 )) > 9</
PrereqIdentifier>

```



```

        <PrereqValue>0</PrereqValue>
        <PrereqErrorMsg>
            The database you are connecting to, is a more recent than
            the supported version. Refer to the certification matrix for supported DB versions.
        </PrereqErrorMsg>
    </DBPrerequisite>

<DBPrerequisite PREREQ_TYPE="Java" DATA_TYPE="STRING" COMPARE_OPERATOR="NE"
SOFT="TRUE">
    <ValidIf DBTYPE="JAVADB" />
    <PrereqIdentifier>%RCU_HOME%/../oracle_common/rcu/config/
JavaDB.jar:javadbproject.JavaDB:checkJavaDBVersion</PrereqIdentifier>
    <PrereqValue>SOFTPASS</PrereqValue>
    <PrereqErrorMsg>
        The database you are connecting to, is a more recent than the supported
        version. Refer to the certification matrix for supported DB versions.
    </PrereqErrorMsg>
</DBPrerequisite>

<DBPrerequisite PREREQ_TYPE="Java" DATA_TYPE="STRING" COMPARE_OPERATOR="NE">
    <ValidIf DBTYPE="JAVADB" />
        <PrereqIdentifier>%RCU_HOME%/../oracle_common/rcu/config/
JavaDB.jar:javadbproject.JavaDB:checkJavaDBVersion</PrereqIdentifier>
        <PrereqValue>FAIL</PrereqValue>
        <PrereqErrorMsg>
            The database you are connecting is not a supported version. Enter
            Database with version equal to or higher than 10.5.3.0. Refer to the certification
            matrix for supported DB versions.
        </PrereqErrorMsg>
    </DBPrerequisite>

<DBPrerequisite PREREQ_TYPE="CustomSQL" DATA_TYPE="NUMBER" COMPARE_OPERATOR="EQ">
    <ValidIf DBTYPE="MYSQL" />
        <PrereqIdentifier>select version() &lt; '5.5.14'</PrereqIdentifier>
        <PrereqValue>0</PrereqValue>
        <PrereqErrorMsg>
            The database you are connecting is not a supported
            version. Enter Database with version equal to or higher than 5.5.14. Refer to the
            certification matrix for supported DB versions.
        </PrereqErrorMsg>
    </DBPrerequisite>

<DBPrerequisite PREREQ_TYPE="CustomSQL" DATA_TYPE="NUMBER"
COMPARE_OPERATOR="EQ" SOFT="TRUE">
    <ValidIf DBTYPE="MYSQL" />
        <PrereqIdentifier>select version() &gt; '5.6' or version() =
'5.6'</PrereqIdentifier>
        <PrereqValue>0</PrereqValue>
        <PrereqErrorMsg>
            The database you are connecting to, is a more recent than
            the supported version. Refer to the certification matrix for supported DB versions.
        </PrereqErrorMsg>
    </DBPrerequisite>

<DBPrerequisite PREREQ_TYPE="CustomSQL" DATA_TYPE="STRING" COMPARE_OPERATOR="EQ">
    <ValidIf DBTYPE="MYSQL" />
        <PrereqIdentifier>select VARIABLE_VALUE from
INFORMATION_SCHEMA.GLOBAL_VARIABLES where VARIABLE_NAME = 'INNODB_FILE_PER_TABLE'</

```

```

PrereqIdentifier>
    <PrereqValue>ON</PrereqValue>
    <PrereqErrorMsg>
        DB Init Param Prerequisite failure for INNODB_FILE_PER_TABLE.
        Its value should be 'ON'.
    </PrereqErrorMsg>
</DBPrerequisite>

<DBPrerequisite PREREQ_TYPE="CustomSQL" DATA_TYPE="STRING" COMPARE_OPERATOR="EQ">
    <ValidIf DBTYPE="MYSQL" />
    <PrereqIdentifier>select VARIABLE_VALUE from
INFORMATION_SCHEMA.GLOBAL_VARIABLES where VARIABLE_NAME = 'INNODB_FILE_FORMAT'</
PrereqIdentifier>
    <PrereqValue>Barracuda</PrereqValue>
    <PrereqErrorMsg>
        DB Init Param Prerequisite failure for INNODB_FILE_FORMAT. Its
        value should be 'Barracuda'.
    </PrereqErrorMsg>
</DBPrerequisite>

<DBPrerequisite PREREQ_TYPE="CustomSQL" DATA_TYPE="STRING" COMPARE_OPERATOR="EQ">
    <ValidIf DBTYPE="MYSQL" />
    <PrereqIdentifier>select VARIABLE_VALUE from
INFORMATION_SCHEMA.GLOBAL_VARIABLES where VARIABLE_NAME = 'INNODB_LARGE_PREFIX'</
PrereqIdentifier>
    <PrereqValue>ON</PrereqValue>
    <PrereqErrorMsg>
        DB Init Param Prerequisite failure for INNODB_LARGE_PREFIX.
        Its value should be 'ON'.
    </PrereqErrorMsg>
</DBPrerequisite>

<DBPrerequisite PREREQ_TYPE="CustomSQL" DATA_TYPE="STRING" COMPARE_OPERATOR="EQ">
    <ValidIf DBTYPE="MYSQL" />
    <PrereqIdentifier>select VARIABLE_VALUE from
INFORMATION_SCHEMA.GLOBAL_VARIABLES where VARIABLE_NAME
='log_bin_trust_function_creators'</PrereqIdentifier>
    <PrereqValue>ON</PrereqValue>
    <PrereqErrorMsg>
        DB Init Param Prerequisite failure for
        log_bin_trust_function_creators. Its value should be 'ON'.
    </PrereqErrorMsg>
</DBPrerequisite>

</PrerequisiteDescriptor>

    <ExecutionDescriptor TYPE="PreLoad">
        <Action TYPE="Java" PERCENT_PROGRESS="60">
            <ValidIf DBTYPE="ORACLE,EBR">
                <CustomQueryFilter DATA_TYPE="NUMBER" COMPARE_OPERATOR="EQ" VALUE="0">
                    select count(*) from dba_views where VIEW_NAME=
'SCHEMA_VERSION_REGISTRY'
                </CustomQueryFilter>
            </ValidIf>
            <Command
TYPE="METHOD">oracle.ias.version.SchemaVersionUtil:utilCreateRegistryTable</Command>
            <Parameters>
                <Parameter TYPE="Connection"></Parameter>
            </Parameters>
        </Action>
        <Action TYPE="Java" PERCENT_PROGRESS="60">

```

```

        <ValidIf DBTYPE="SQLSERVER">
            <CustomQueryFilter DATA_TYPE="NUMBER" COMPARE_OPERATOR="EQ" VALUE="0">
                select count(*) from INFORMATION_SCHEMA.TABLES where
TABLE_NAME='SCHEMA_VERSION_REGISTRY'
            </CustomQueryFilter>
        </ValidIf>
        <Command
TYPE="METHOD">oracle.ias.version.SchemaVersionUtil:utilCreateRegistryTable</Command>
        <Parameters>
            <Parameter TYPE="Connection"></Parameter>
        </Parameters>
    </Action>
    <Action TYPE="Java" PERCENT_PROGRESS="60">
        <ValidIf DBTYPE="IBMDB2">
            <CustomQueryFilter DATA_TYPE="NUMBER" COMPARE_OPERATOR="EQ" VALUE="0">
                select count(*) from syscat.tables where
TABNAME='SCHEMA_VERSION_REGISTRY'
            </CustomQueryFilter>
        </ValidIf>
        <Command
TYPE="METHOD">oracle.ias.version.SchemaVersionUtil:utilCreateRegistryTable</Command>
        <Parameters>
            <Parameter TYPE="Connection"></Parameter>
        </Parameters>
    </Action>
    <Action TYPE="Java" PERCENT_PROGRESS="60">
        <ValidIf DBTYPE="JAVADB">
            <CustomQueryFilter DATA_TYPE="NUMBER" COMPARE_OPERATOR="EQ"
VALUE="0">
                SELECT COUNT(*) FROM SYS.SYSTABLES INNER JOIN SYS.SYSSCHEMAS ON
SYS.SYSTABLES.SCHEMAID = SYS.SYSSCHEMAS.SCHEMAID WHERE SCHEMANAME='ORACLEFMW' AND
TABLENAME='SCHEMA_VERSION_REGISTRY_T'
            </CustomQueryFilter>
        </ValidIf>
        <Command
TYPE="METHOD">oracle.ias.version.SchemaVersionUtil:utilCreateRegistryTable</Command>
        <Parameters>
            <Parameter TYPE="Connection"></Parameter>
        </Parameters>
    </Action>

    <Action TYPE="Java" PERCENT_PROGRESS="60">
        <ValidIf DBTYPE="MYSQL">
            <CustomQueryFilter DATA_TYPE="NUMBER" COMPARE_OPERATOR="EQ" VALUE="0">
                select count(*) from INFORMATION_SCHEMA.TABLES where
TABLE_NAME='SCHEMA_VERSION_REGISTRY'
            </CustomQueryFilter>
        </ValidIf>
        <Command
TYPE="METHOD">oracle.ias.version.SchemaVersionUtil:utilCreateRegistryTable</Command>
        <Parameters>
            <Parameter TYPE="Connection"></Parameter>
        </Parameters>
    </Action>

</ExecutionDescriptor>

<ExecutionDescriptor TYPE="PostLoad">
    <Action TYPE="Java" PERCENT_PROGRESS="60">
        <ValidIf DBTYPE="EBR"/>
        <Command

```

```

TYPE="METHOD">oracle.ias.version.SchemaVersionUtil:utilSetEditionName</Command>
    <Parameters>
        <Parameter TYPE="String">%EDITION_NAME%</Parameter>
    </Parameters>
</Action>

<Action TYPE="Java">
    <ValidIf DBTYPE="ORACLE,EBR"/>
    <Command
TYPE="METHOD">com.oracle.cie.rcu.ComponentSchemaUtil:loadCompSchemaInfo</Command>
    <Parameters>
        <Parameter TYPE="Connection"></Parameter>
        <Parameter TYPE="String">%SERVICE_TABLE_STRING%</Parameter>
        <Parameter TYPE="String">%PREFIX_NAME%</Parameter>
        <Parameter TYPE="String">%DB_HOSTNAME%</Parameter>
        <Parameter TYPE="String">%DB_SERVICE%</Parameter>
        <Parameter TYPE="String">%DB_PORTNUMBER%</Parameter>
    </Parameters>
</Action>
<Action TYPE="Java">
    <ValidIf DBTYPE="SQLSERVER,IBMDB2,MYSQL,JAVADB"/>
    <Command
TYPE="METHOD">com.oracle.cie.rcu.ComponentSchemaUtil:loadNonOracleCompSchemaInfo</
Command>
    <Parameters>
        <Parameter TYPE="Connection"></Parameter>
        <Parameter TYPE="String">%SERVICE_TABLE_STRING%</Parameter>
        <Parameter TYPE="String">%PREFIX_NAME%</Parameter>
        <Parameter TYPE="String">%DB_HOSTNAME%</Parameter>
        <Parameter TYPE="String">%DB_PORTNUMBER%</Parameter>
        <Parameter TYPE="String">%DATABASE_NAME%</Parameter>
    </Parameters>
</Action>
</ExecutionDescriptor>

<FatalErrors>
    <Error Type="ORA-17439">Invalid SQL type</Error>
    <Error Type="ORA-01435">user does not exist</Error>
    <Error Type="ORA-01435">user does not exist</Error>
    <Error Type="ORA-00955">name is already used by an existing object</Error>
    <Error Type="ORA-01031">name is already used by an existing object</Error>
</FatalErrors>

<IgnorableErrors>
    <Error Type="ORA-02289">sequence does not exist</Error>
    <Error Type="ORA-00904">invalid identifier</Error>
    <Error Type="ORA-01920">user name conflicts with another user or role name</
Error>
    <Error Type="ORA-01418">specified index does not exist</Error>
    <Error Type="ORA-00942">table or view does not exist</Error>
    <Error Type="ORA-06512">Not found</Error>
    <Error Type="ORA-01403">no data found</Error>
    <Error Type="ORA-04043">does not exist</Error>
    <Error Type="ORA-04080">Trigger does not exist</Error>
    <Error Type="ORA-00959">Tablespace does not exist</Error>
    <Error Type="ORA-24035">AQ agent not subscriber</Error>
    <Error Type="ORA-24185">Transformation not found</Error>
    <Error Type="ORA-24042">Does not exist</Error>
    <Error Type="ORA-24088">Does not exist</Error>

```

```

    </IgnorableErrors>
  </ComponentInfo>

```

C.2.4 Soft-Prerequisite Support

In the `ComponentInfo.xml` file, If a particular `<DBPrerequisiteSet>` or `<DBPrerequisite>` is not mandatory, then you can use the soft-prerequisite option by setting the `SOFT` attribute to `TRUE`. When a soft-prerequisite is not met, a pop-up dialog window with an error or warning message will appear; the user will have the option to ignore the message or abort the operation. You can define a soft-prerequisite at the `<DBPrerequisiteSet>` level, the `<DBPrerequisite>` level, or both; if both are defined, then `<DBPrerequisiteSet>` will take higher precedence.

Below is an example of setting a soft-prerequisite at the `<DBPrerequisite>` level:

```

<DBPrerequisiteSet>
...
  <DBPrerequisite PREREQ_TYPE="CustomSQL" DATA_TYPE="STRING" COMPARE_OPERATOR="EQ"
  SOFT="TRUE">
    <PrereqIdentifier>select value from nls_database_parameters where parameter =
    'NLS_CHARACTERSET'</PrereqIdentifier>
    <PrereqValue>AL32UTF8</PrereqValue>
    <PrereqErrorMsg>
      The database you are connecting is with non-AL32UTF8 character set.
      Oracle strongly recommends using AL32UTF8 as the database character
      set.
    </PrereqErrorMsg>
  </DBPrerequisite>
...
</DBPrerequisiteSet>

```

C.2.5 Default Tablespaces Configuration File

The default tablespaces configuration file (`Storage.xml`) lists the components for which tablespaces are created out-of-the-box. This file is located in the `ORACLE_HOME/oracle_common/rcu/config` (on UNIX operating systems) or `ORACLE_HOME\oracle_common\rcu\config` (on Windows operating systems) directory.

The actual tablespace configuration file for each component is located in the `ORACLE_HOME/oracle_common/rcu/integrationcomponent/component_Storage.xml` (on UNIX operating systems) or `ORACLE_HOME\oracle_common\rcu\integrationcomponent\component_Storage.xml` (on Windows operating systems) file. Each component has its own tablespaces configuration file.

Below is a sample `opss_Storage.xml` file:

```

<?xml version="1.0" encoding="UTF-8" ?>

<!-- OPSS START -->
<TablespaceAttributes NAME="IAS_OPSS">
  <Type>Permanent</Type>
  <DefaultTemp>False</DefaultTemp>
  <Bigfile>False</Bigfile>
  <DatafilesList>
    <DatafileAttributes ID="%DATAFILE_LOCATION%/ias_opss.dbf">
      <Size UNIT="MB">60</Size>
      <Reuse>True</Reuse>
      <AutoExtend>True</AutoExtend>
    </DatafileAttributes>
  </DatafilesList>

```

```
</TablespaceAttributes>
<!-- OPSS END -->
```

C.3 RCU Script Writing Guidelines

Below are some common RCU script writing guidelines:

Schema user names and passwords should not be hard coded. They should be coded as substitutable variables.

- If schema user needs to be created, it should be created first using the parameters passed in by RCU.
- Tablespace and temporary tablespace references should not be hard coded; they should be coded as variables.
- Do not use CONNECT; instead, use "ALTER SESSION SET CURRENT_SCHEMA = <SCHEMA_OWNER>" after creating the schema user.
- The set of ignorable and fatal ORA errors (if any) should be listed in the RCU XML component configuration file.
- Avoid any "shutdown" or "startup" that would bounce the database instance.
- SCHEMA_VERSION_REGISTRY should be updated before and after loading schema. This can be done using [JavaAction](#) as shown in [Java Code Using JavaAction](#) or with in the component scripts using SCHEMA_VERSION PL/SQL package.
- Block comments that contain line comments (`/* -- comment */`) are not supported.

C.3.1 Guidelines for RCU JDBC Engine Compliant SQL*Plus Scripts

Below are some guidelines for writing RCU JDBC Engine SQL*Plus scripts:

- All statements must be terminated with appropriate terminating chars. CREATE PACKAGE, TYPE needs to be terminated with ";" with "/" on the next line. All other statements (Create TABLE, VIEW, etc.) need to be terminated by ";" or "/" (only one of them, not both).
- EXECUTE calls should be replaced with "BEGIN/END blocks".
- DEFINE statements should be in one line, no comments in the same line and no ";" at the end.
- SET, SHOW, SPOOL, WHENEVER, BREAK, EXIT statements are simply ignored.
- HOST command is not supported yet.
- VARIABLE and COL(UMN) are not supported.

Dynamically calling another SQL Script within a PL/SQL block using the following technique is not supported:

```
VARIABLE initfile VARCHAR2(32)
COLUMN :initfile NEW_VALUE init_file NOPRINT;
BEGIN
  IF (some condition) THEN
    :initfile := 'initcdc.sql';
  ELSE
```

```

        :initfile := 'nothing.sql';
    END IF;
END;
/
SELECT :initfile FROM DUAL;
@@&init_file

```

The work around is to have a separate Action with "ValidIf" tag to specify the condition.

C.3.2 Guidelines for Pure JDBC Scripts

Below are some guidelines for writing Pure JDBC scripts for RCU:

- Should not contain any SQL*Plus directives (like SET, WHENEVER, etc.).
- All DEFINES should be changed to PL/SQL variable declarations.
- All SQL statements should be wrapped in EXECUTE IMMEDIATE.
- PL/SQL style comments are allowed, But SQL*Plus style (REM) comments are not allowed.
- DROP statements preceding CREATE statements do not work. DROP should only be done after checking for the existence of the object. Ideally, all DROP statements should put into different PL/SQL script and RCU can call this script before calling a CREATE script, if that is desired.
- Contents of the script file should be a valid PL/SQL block, which can be called within `Connection.prepareCall()`.

C.3.3 Guidelines for SQL*Plus Scripts

Below are some guidelines for writing SQL*Plus scripts for RCU:

- Should not have any "exit" statements or "WHENEVER ERROR EXIT" directives. This would cause RCU SQL*Plus session to exit unexpectedly and may impact other component scripts to be executed later.
- Scripts should not have any spool commands. RCU would generate a spool log for each component.

C.3.4 Guidelines for SQL Server-Based Scripts

Below are some guidelines for writing SQL Server-based scripts for RCU:

- Support is a subset of what is supported in t-sql scripts that can be executed by `sqlcmd`.
- "ValidIf" tags should be added around all database-specific Actions and Prerequisites. For example:

```

<DBPrerequisite PREREQ_TYPE="TablespaceFreeMB" DATA_TYPE="NUMBER"
COMPARE_OPERATOR="GT">
    <ValidIf DBTYPE="ORACLE" />
    <PrereqIdentifier>%DEFAULT_TABLESPACE%</PrereqIdentifier>
    <PrereqValue>50</PrereqValue>
</DBPrerequisite>

```

- RCU supports recursive variable definitions such as:

```
setvar var1 value1  
setvar var2 $(var1)
```

- There should be a "go" statement to end blocks of statements. All statements preceding the "go" statement will be executed as a single statement over JDBC.
- The JDBC connection is created in the auto-commit "on" mode.
- Currently, begin transaction and commit transaction statements are not supported.
- Variables passed to scripts via the XML file will be passed as follows:

```
Script.sql -v v1=value1 v2=value2
```

This is only for scripts called using the XML files. If a script calls another script, you can use any other variable name.

Troubleshooting Repository Creation Utility

This appendix contains information to help you troubleshoot any issues you might encounter while running the Repository Creation Utility (RCU).

This chapter contains the following sections:

- [General Troubleshooting Tips](#)
- [RCU Log Files](#)
- [Need More Help?](#)

D.1 General Troubleshooting Tips

If you encounter an error during installation:

- Read the *Oracle Fusion Middleware Release Notes* for the latest updates. The most current version of the release notes is available on Oracle Technology Network in the Oracle Fusion Middleware Documentation page.

Select the documentation library for your specific product release to view the release notes.

- Verify that your computer meets the requirements specified in the *Oracle Fusion Middleware System Requirements and Specifications* document.

Select the document that is applicable for your release.

- Verify that your environment meets the certification requirements for your release and platform, as specified on the Oracle Fusion Middleware Supported System Configurations page.
- Make sure that your database is up and running.
- If you entered incorrect information on one of the screens, use the navigation pane on the left hand side of the graphical interface to return to that screen.
- If an error occurred while running RCU:
 1. Note the error and review the installation log files (see [RCU Log Files](#)).
 2. Correct the issue that caused the error. Depending on the type of error, you may either continue with your RCU operation, or be forced to restart RCU.
 3. Continue or restart RCU to complete your desired operation.

D.2 RCU Log Files

The main RCU log file is written to the `/tmp/`

`RCUdate_timestamp_random_number/logs` (on UNIX operating systems) or `C:`

\Users\user_name\AppData\Local\Temp
\RCUdate_timestamp_random_number\logs (on Windows operating systems)
directory.

For example, on a UNIX operating system:

/tmp/RCU2014-01-02_03-00_412547075/logs/rcu.log

Accessing RCU Log Files on Windows

On Windows operating systems, the AppData folder might be hidden. To be able to navigate to the RCU log files on Windows, ensure that the AppData folder is visible:

1. From the **Start** menu, navigate to **Control Panel > Appearance and Personalization > Folder Options**.
The **Folder Options** window appears.
2. Select the **View** tab.
3. Under Advanced settings, ensure that **Show hidden files, folders, and drives** is selected and click **OK**.

RCU Component Log Files

In addition to the general log file, each component writes a log file of its own. All component log files are also written to the same directory as the rcu.log file.

[Table D-1](#) lists the component log file names in alphabetical order by log file name.

Table D-1 RCU Component Log File Names

Component	Log File Name
Analytics	activities.log
Business Intelligence Platform	biplatform.log
Oracle WebCenter Enterprise Capture	capture.log
Oracle WebCenter Content Server — Complete	content.log
Oracle WebCenter Content Server — Search Only	contentsearch.log
Discussions	discussions.log
EDQ Config Repository	edq_conf.log
EDQ Results Repository	edq_res.log
Oracle Enterprise Scheduler	ess.log
Audit Services	iau.log
Audit Services Append	iau_append.log
Audit Services Viewer	iau_viewer.log
Metadata Services	mds.log
Managed File Transfer	mft.log

Component	Log File Name
Master and Work Repository	odi.log
Monitor Server	oggmon.log
Oracle Platform Security Services	opss.log
Portlet Producers	portlet.log
SOA Infrastructure	soainfra.log
Common Infrastructure Services	stb.log
User Messaging Service	ucsums.log
Veridata Repository	veridata.log
WebCenter Sites	wcsites.log
WebCenter Sites — Visitor Services	wcsitesvs.log
Portal and Services	webcenter.log
WebLogic Services	wls.log

D.3 Need More Help?

If this appendix does not solve the problem you encountered, try looking for a solution on My Oracle Support (formerly Oracle MetaLink):

<https://support.oracle.com/>

If you are unable to find a solution for your problem, open a service request.

