

Oracle® Hospitality Hotel Property Interface Monitoring / Log Browser User Guide



Release 8.17.0.0
G55565-01
April 2026

The Oracle logo, consisting of a solid red square with the word "ORACLE" in white, uppercase, sans-serif font centered within it.

ORACLE®

Oracle Hospitality Hotel Property Interface Monitoring / Log Browser User Guide Release 8.17.0.0

G55565-01

Copyright ©, 2026, Oracle and/or its affiliates. All rights reserved.

This software and related documentation are provided under a license agreement containing restrictions on use and disclosure and are protected by intellectual property laws. Except as expressly permitted in your license agreement or allowed by law, you may not use, copy, reproduce, translate, broadcast, modify, license, transmit, distribute, exhibit, perform, publish, or display any part, in any form, or by any means. Reverse engineering, disassembly, or de-compilation of this software, unless required by law for interoperability, is prohibited.

The information contained herein is subject to change without notice and is not warranted to be error-free. If you find any errors, please report them to us in writing.

If this software or related documentation is delivered to the U.S. Government or anyone licensing it on behalf of the U.S. Government, then the following notice is applicable:

U.S. GOVERNMENT END USERS: Oracle programs, including any operating system, integrated software, any programs installed on the hardware, and/or documentation, delivered to U.S. Government end users are "commercial computer software" pursuant to the applicable Federal Acquisition Regulation and agency-specific supplemental regulations. As such, use, duplication, disclosure, modification, and adaptation of the programs, including any operating system, integrated software, any programs installed on the hardware, and/or documentation, shall be subject to license terms and license restrictions applicable to the programs. No other rights are granted to the U.S. Government.

This software or hardware is developed for general use in a variety of information management applications. It is not developed or intended for use in any inherently dangerous applications, including applications that may create a risk of personal injury. If you use this software or hardware in dangerous applications, then you shall be responsible to take all appropriate fail-safe, backup, redundancy, and other measures to ensure its safe use. Oracle Corporation and its affiliates disclaim any liability for any damages caused by use of this software or hardware in dangerous applications.

Oracle and Java are registered trademarks of Oracle and/or its affiliates. Other names may be trademarks of their respective owners.

Intel and Intel Xeon are trademarks or registered trademarks of Intel Corporation. All SPARC trademarks are used under license and are trademarks or registered trademarks of SPARC International, Inc. AMD, Opteron, the AMD logo, and the AMD Opteron logo are trademarks or registered trademarks of Advanced Micro Devices. UNIX is a registered trademark of The Open Group.

This software or hardware and documentation may provide access to or information about content, products, and services from third parties. Oracle Corporation and its affiliates are not responsible for and expressly disclaim all warranties of any kind with respect to third-party content, products, and services unless otherwise set forth in an applicable agreement between you and Oracle. Oracle Corporation and its affiliates will not be responsible for any loss, costs, or damages incurred due to your access to or use of third-party content, products, or services, except as set forth in an applicable agreement between you and Oracle.

Contents

Contents	3
<hr/>	
Preface	5
<hr/>	
1 General	1-1
<hr/>	
General Information	1-1
Usage	1-1
2 IFC Application Monitoring	2-1
<hr/>	
MonDetail level and values	2-2
Communication Data	2-2
Level4 Data	2-2
DbActions	2-2
Auto Reset MonDetail Debug level	2-3
Monitoring Bar	2-4
Display Objects bar	2-4
Communication data bar	2-5
DbAction tickbox	2-6
MessLvl box	2-6
Monitoring format bar	2-6
Saving Monitoring Filter Settings	2-9
Disable Monitoring	2-10
3 Adding Comments to monitoring items	3-12
<hr/>	
General	3-12
Adding a comment	3-12
Finding a comment	3-12
Deleting a Comment	3-13
Comments in History Log Files	3-14
4 IFC8.NET IFC log files	4-1
<hr/>	
Log File Types	4-1
Log File Directory	4-2
Log File purge	4-3
Log File Size Calculation	4-3
Load Old Logfiles	4-4
Load Log file within IfcApplication:	4-4

Load Log file with Ifc8 LogBrowser	4-5
Load Old .evt Log Files	4-7

Preface

Audience

This document is intended for system administrators, support and users familiar with the Hotel Property Interface application IFC8.

Customer Support

To contact Oracle Customer Support, access Customer Support Portal at the following URL:

<https://iccp.custhelp.com>

When contacting Customer Support, please provide the following:

- Product version and program/module name
- Functional and technical description of the problem (include business impact)
- Detailed step-by-step instructions to re-create
- Exact error message received
- Screen shots of each step you take
- Full contact details including email address

Documentation

Oracle Hospitality product documentation is available on the Oracle Help Center at

<http://docs.oracle.com/en/industries/hospitality/>

Table 1 Revision History

Date	Description
April 2026	Initial Publication

1 General

General Information

IFC8.Net/Monitoring & Log Browser is part of the Hotel Property Interface (IFC8) as of Version 8.15.0.0 and subsequent versions.

IFC8 is used as the primary Property Interface application with Oracle OPERA PMS (on-Premises & Cloud) and Oracle Suite8 PMS (legacy)

IFC8 is intended to be installed at the customer site for communication to certain external systems that are utilized by the site.

Please also refer to documentation on Oracle Help Center at
<https://docs.oracle.com/en/industries/hospitality/>

Usage

The Ifc8.Net Monitoring module enables the user to view the current and stored communication and internal messages & errors of the Ifc8.Net application / Service.

The Ifc8.Net Log Browser program enables the user to load IFC8.Net log files without using the Ifc Application.

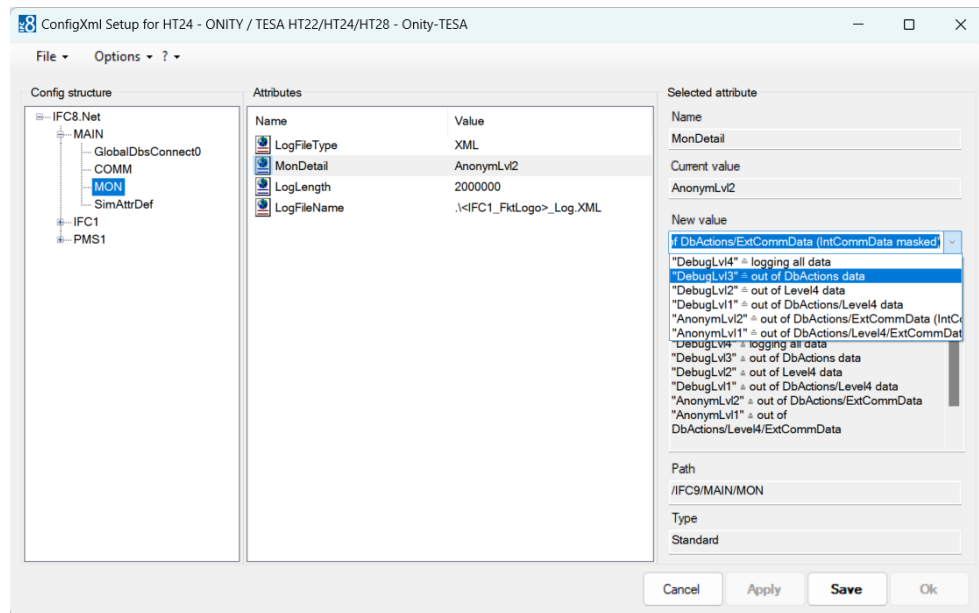
2

IFC Application Monitoring

IFC8.NET has an integrated monitoring option where you can set the data to display in the application screen and to store in IFC8 log files.

IFC8.NET will by default only log basic data but no communication data.

There will be several log levels, which can be set in the Ifc8 Configuration form in MAIN – MON – MonDetail:



MonDetail level and values

Following available Monitoring Detail and Log file level:

Table 4 MonDetail

MonDetail value	Description	Notes
AnonymLv11	No DbActions, No Level4 data, No Vendor Communication data	
AnonymLv12	No DbActions, No Vendor Communication data	DEFAULT when creating new Config.xml via IfcApplication
DebugLv11	No DbActions, No Level4 data	
DebugLv12	No Level data	
DebugLv13	No DbAction data	Recommended Debug Level
DebugLv14	Log all data incl DbAction data	

Communication Data

The messages which will be sent/received to/from the vendor system & to/from the PMS system (OPERA: IfcController)

The messages in XML format IFC8 will internally create and transmit between the IFC and PMS Object(s).

Level4 Data

IFC8 logging of internal processes.

DbActions

Suite8 ONLY data.

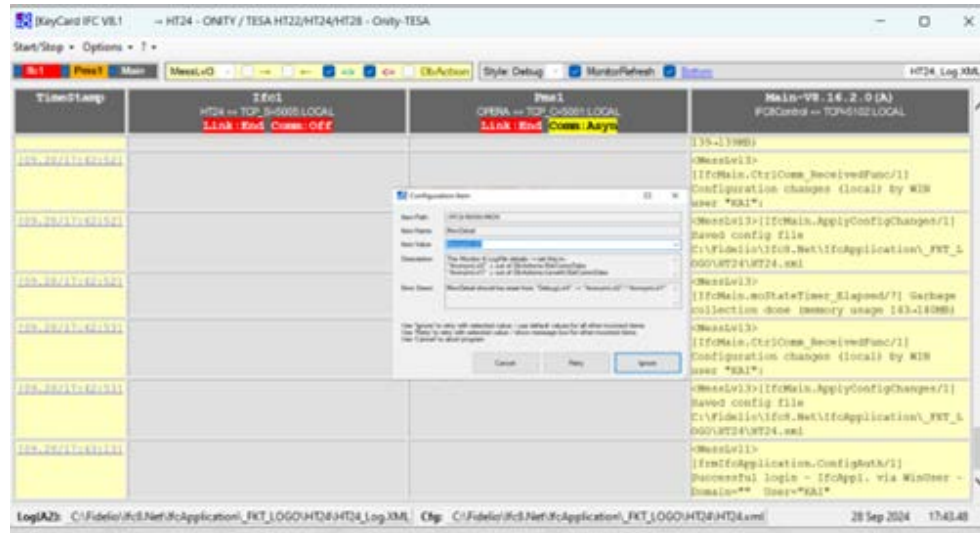
Internal SQL statements between IFC8 and the Fidelio Suite8 dll files or database queries for support purposes. Inactive by default

Auto Reset MonDetail Debug level

When the MonDetail value is set in IFC to another value than AnonymLv1 or AnonymLv2 IFC8 will force to reset the MonDetail level back to the default value (AnonymLv2) with next shutdown/restart of the IFC8 instance after 24 hours.

This is to ensure that debug log level will not remain active all the time after it is set.

After shutdown and restart of the IFC8 instance IFC will start up with configuration window.

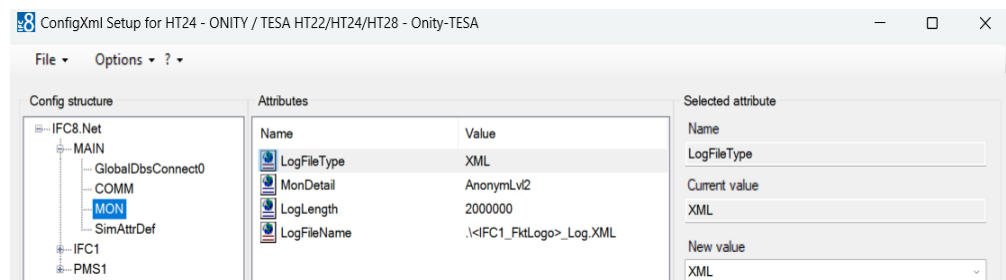


Reason for the window being opened is described in Error Descr.:

MonDetail should be reset from "DebugLv4" → "AnonymLv2"/"AnonymLv1"

User can now change MonDetail back to Default (IFC would do itself) or chose another MonDetail level. (E.g. in case further debug logging is required).

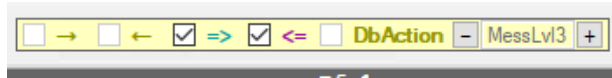
Confirming the suggested settings with Ignore will change the MonDetail status to the default value AnonymLv2.



 **NOTE:**

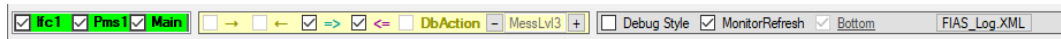
due to this change in Config.xml it is required to Save the configuration afterwards by entering the Config Editor and press the SAVE button.

Monitor filter bar does now only allow to set display the internal data

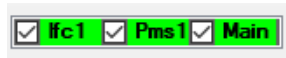


Monitoring Bar

Option bar to change display the communication details within the IFC monitoring.



Display Objects bar



Here you can define which Objects you want to display within the application.

Options

- Show Ifcx object monitoring – showing all communication between vendor and IFC application
- Show Pmsx object monitoring – showing all communication between PMS and IFC application
- Show Main object monitoring – showing internal messages of IFC application

The respective objects displayed will be colored with red, yellow or green based on the current Link status with the connecting system.

 **NOTE:**

The colour of the Main object will indicate IfcControl connection status and will be shown only yellow and green status. When IfcControl connection is not initiated, then no colour will be displayed.

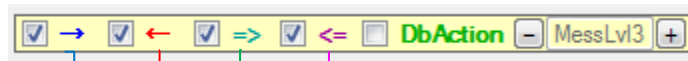


TimeStamp	Ifc1 FIAS = TCP-5011.LOCAL Link:Alive Comm:Sync	Pms1 SERV[1] = DBS-GlobaCbaConnectOfcCommPort-5511 Link:Alive Comm:Sync	Main RControl = TCP-5000.LOCAL Link:Alive Comm:Sync
108.28.11:52:261		license "PARIAL_CAS" done	
108.28.11:52:261		<MessLv13>[CommDba.CheckLic/21] Feature license "FULL_CAS" done	
108.28.11:52:261		[11] <LinkAlive Date="190828" Time="115226" />	
108.28.11:52:261		<MessLv13>[IfcObject.ChangeLinkState/21] Start-Alive	
108.28.11:52:261	<MessLv13>[IfcObject.ChangeLinkState/21] Start-Alive		
108.28.11:52:261	[11] <LinkAlive Date="190828" Time="115226" />		
108.28.11:52:261		<MessLv13> [CommObjec=Waitr.Init_Specific/21] (10.165.120.228:5511) - done	
108.28.11:52:331			<MessLv13> [IfcMain.m0StateTimer_Elapsed/16] Garbage collection done (memory usage 141-140MB)
108.28.11:52:561			<MessLv13> [TopFbaConnect.Init/14] - done
108.28.11:52:561			<MessLv13> [CommMainServ.OnChangeCommState/14] (127.0.0.1:8317) Off-Sync
108.28.11:53:411			<MessLv13> [IfcMain.m0StateTimer_Elapsed/15] Garbage collection done (memory usage 147-147MB)
108.28.11:54:431			<MessLv13> [IfcMain.m0StateTimer_Elapsed/16] Garbage collection done (memory usage 144-144MB)

If Main object is unticked, Main object messages will not be displayed.

TimeStamp	Ifc1 FIAS = TCP-5011.LOCAL Link:Alive Comm:Sync	Pms1 SERV[1] = DBS-GlobaCbaConnectOfcCommPort-5511 Link:Alive Comm:Sync
108.28.11:52:261		<MessLv13> [Parser_SERV.CheckSchemaToCmd/21] RightauditEnd_0 / Active=True
108.28.11:52:261		<MessLv13>[CommDba.CheckLic/21] FtcLogo license "FIAS" done
108.28.11:52:261		<MessLv13>[CommDba.CheckLic/21] Feature license "SIMPLE_POSTING" done
108.28.11:52:261		<MessLv13>[CommDba.CheckLic/21] Feature license "CHECK_IN_OUT" done
108.28.11:52:261		<MessLv13>[CommDba.CheckLic/21] Feature license "TEXT_MESSAGE" done
108.28.11:52:261		<MessLv13>[CommDba.CheckLic/21] Feature license "VOICEMAIL" done
108.28.11:52:261		<MessLv13>[CommDba.CheckLic/21] Feature license "WAKEUP" done

Communication data bar

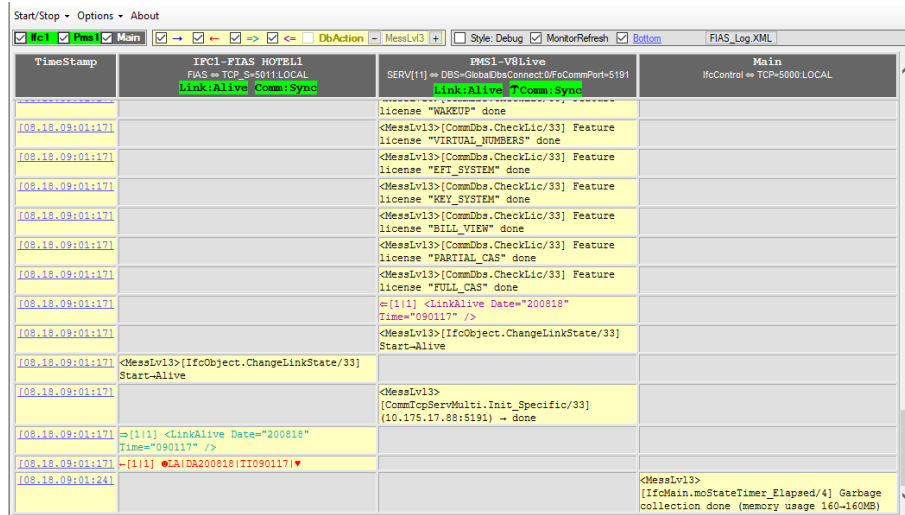


- Show incoming data from vendor to IFC (Ifc object) / from PMS to IFC (Pms object) = blue coloured messages
- Show outgoing data from IFC to vendor (Ifc object) / from IFC to PMS (Pms object) = red coloured messages
- Show internal data from Ifc object to Pms object (Pms object) / from Pms object to Ifc object (Ifc object) = green coloured XML messages
- Show internal data from Pms object to Ifc object (Pms object) / from Ifc object to Pms object (Ifc object) = magenta coloured XML messages

Internal status messages and error messages = black coloured (no option to not display)

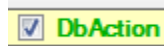
 **NOTE:**

Based on the MonDetail value set the above boxes are available to tick or are greyed out!



DbAction tickbox

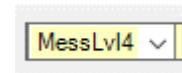
Enables display of Database related messages in Pms object. Available to set only when PMS object has **SERV** Parser active



For Suite8 PMS connection only.

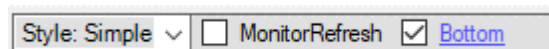
MessLvl box

Used to define Message level (log level) for internal messages.



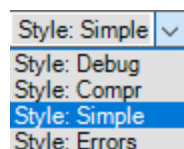
Lowest Level = 1 – Highest Level = 4
Default = 3

Monitoring format bar



Monitoring Style LOV

LOV (List of Values) which enables change of monitoring display style.

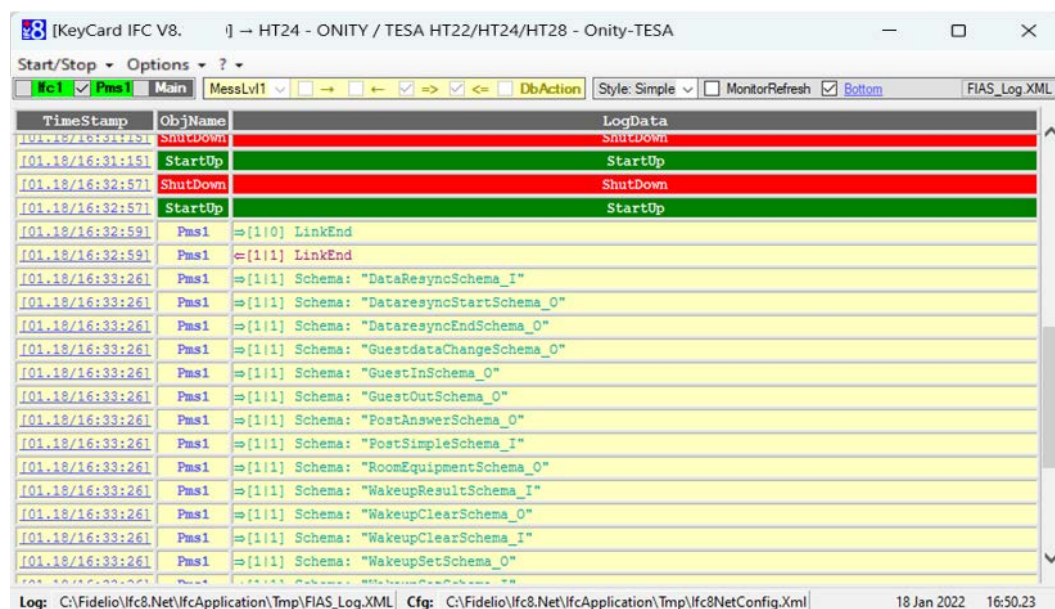


4 different styles are available:

- Simple Style
- Compressed Style
- Debug Style
- Errors

Simple Style (drop Down)

Enables displaying only basic action types without detailed messages within the IFC instance.



When selected, the style will change to a simple view where the user gets the basic information on what action was made within the PMS object of the IFC instance. No detailed information of the messages and action will be shown.

Columns:

TimeStamp: Showing Date and Time of the Message

ObjName: Showing the Object Name (Ifc, Pms, Main)

LogData: Showing the action type and referring attribute as received in PMS object.

All other messages and attributes from other Objects are not displayed.

Compr. Style

Enables displaying monitoring messages in compressed style

TimeStamp	ObjName	LogData
[01.18/16:51:06]	Main	<MessLvl4>[IfcMain.moStateTimer_Elapsed/19] Starting garbage collection
[01.18/16:51:06]	Main	<MessLvl3>[IfcMain.moStateTimer_Elapsed/19] Garbage collection done (memory usage 149-149MB)
[01.18/16:52:04]	Ifc1	<MessLvl4>[PeriodicEvents] -ProtocolMain_ProcessRead_Ifc1 (24/min.)
[01.18/16:52:04]	Pms1	<MessLvl4>[PeriodicEvents] -ProtocolMain_ProcessRead_Pms1 (24/min.)
[01.18/16:52:09]	Main	<MessLvl4>[IfcMain.moStateTimer_Elapsed/19] Starting garbage collection
[01.18/16:52:09]	Main	<MessLvl3>[IfcMain.moStateTimer_Elapsed/19] Garbage collection done (memory usage 149-149MB)
[01.18/16:53:04]	Ifc1	<MessLvl4>[PeriodicEvents] -ProtocolMain_ProcessRead_Ifc1 (24/min.)
[01.18/16:53:04]	Pms1	<MessLvl4>[PeriodicEvents] -ProtocolMain_ProcessRead_Pms1 (24/min.)
[01.18/16:53:09]	Main	<MessLvl4>[IfcMain.moStateTimer_Elapsed/8] Starting garbage collection
[01.18/16:53:09]	Main	<MessLvl3>[IfcMain.moStateTimer_Elapsed/8] Garbage collection done (memory usage 157-157MB)
[01.18/16:54:04]	Ifc1	<MessLvl4>[PeriodicEvents] -ProtocolMain_ProcessRead_Ifc1 (24/min.)
[01.18/16:54:04]	Pms1	<MessLvl4>[PeriodicEvents] -ProtocolMain_ProcessRead_Pms1 (24/min.)
[01.18/16:54:11]	Main	<MessLvl4>[IfcMain.moStateTimer_Elapsed/16] Starting garbage collection
[01.18/16:54:11]	Main	<MessLvl3>[IfcMain.moStateTimer_Elapsed/16] Garbage collection done (memory usage 149-149MB)
[01.18/16:55:05]	Ifc1	<MessLvl4>[PeriodicEvents]

When selected, the style will change to see all messages ordered by time stamp.

Columns:

- TimeStamp: Showing Date and Time of the Message
- ObjName: Showing the Object Name (Ifc, Pms, Main)
- LogData: Showing the messages/Data of the related object

Debug Style

Enables displaying IFC objects as columns.

TimeStamp	Ifc1	Pms1	Main
	FIAS = TCP=5011 LOCAL Link:Alive Comm:Sync	SERV[1] = DBS=GlobalDbsConnectOfFcCommPort=5511 Link:Alive Comm:Sync	IfcControl = TCP=5000 LOCAL Link:Alive Comm:Sync
[08.28.12:34:04]			[IfcMain.moStateTimer_Elapsed/16] Garbage collection done (memory usage 169-169MB)
[08.28.12:35:06]			<MessLvl3> [IfcMain.moStateTimer_Elapsed/16] Garbage collection done (memory usage 170-170MB)
[08.28.12:36:08]			<MessLvl3> [IfcMain.moStateTimer_Elapsed/16] Garbage collection done (memory usage 175-170MB)
[08.28.12:37:11]			<MessLvl3> [IfcMain.moStateTimer_Elapsed/15] Garbage collection done (memory usage 171-171MB)

When selected, the style will change to display all Objects within columns.

Columns:

TimeStamp: Showing Date and Time of the Message
ObjName: Showing the messages sent/received as per Ifc or PMS object
Main: Showing the message within Main object

Errors Style

Enables displaying Errors and Start Stop Actions ONLY.

TimeStamp	ObjName	LogData
[01.18/16:10:52]	StartUp	StartUp
[01.18/16:12:19]	ShutDown	ShutDown
[01.18/16:14:19]	StartUp	StartUp
[01.18/16:16:54]	ShutDown	ShutDown
[01.18/16:16:54]	StartUp	StartUp
[01.18/16:20:11]	ShutDown	ShutDown
[01.18/16:20:11]	StartUp	StartUp
[01.18/16:20:25]	ShutDown	ShutDown
[01.18/16:20:25]	StartUp	StartUp
[01.18/16:21:19]	ShutDown	ShutDown
[01.18/16:21:19]	StartUp	StartUp
[01.18/16:30:31]	ShutDown	ShutDown
[01.18/16:30:31]	StartUp	StartUp
[01.18/16:31:15]	ShutDown	ShutDown
[01.18/16:31:15]	StartUp	StartUp
[01.18/16:31:48]	Main	<Warning>[frmIfcApplication.ConfigAuth/1] -Description: Unsuccessful login - IfcAppl. - User="kareynol" Status:IC
[01.18/16:32:57]	ShutDown	ShutDown
[01.18/16:32:57]	StartUp	StartUp

Monitor Refresh check box

Enables to show/update the current data flow as it is received (ticked).

Allowing the user to scroll through monitoring screen without constant updating of the User Interface (unticked).

Bottom check box

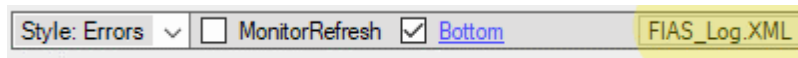
Enables to get to the Bottom of the Monitor screen when MonitorRefresh is unticked. When Bottom is unticked, the Cursor will go to the top of the Monitor screen when MonitorRefresh will be unticked.

To tick or untick the Bottom tick box MonitorRefresh **must** be unticked.

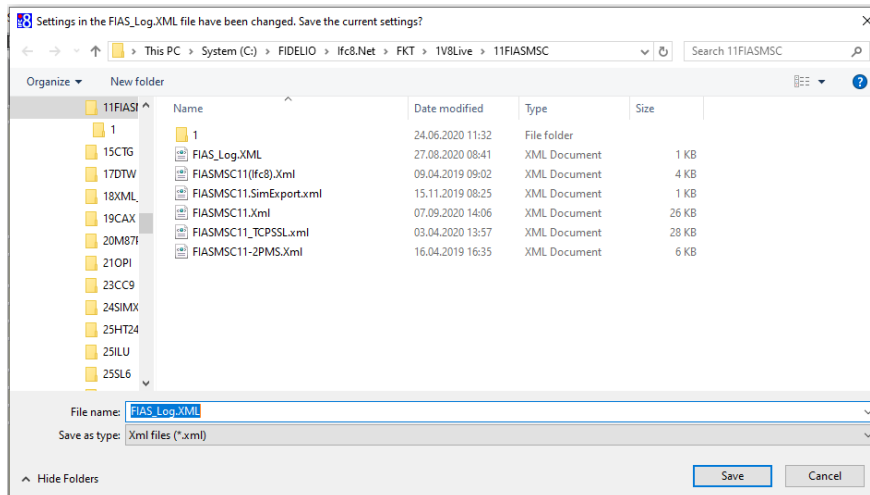
Saving Monitoring Filter Settings

In order to save the Monitoring filter settings to use with next IFC8 instance start

Right-click the Log file name button in the Monitoring bar:



The **Save** as window opens.



The current Main log file is marked already.

Click **Save** to save the filter settings in the Main log file.

Disable Monitoring

Within IFC Application under Options / “Show Monitoring” the Main monitoring screen can be disabled.

When unticked, the IFC Application will only display basic data. All communication will be logged anyway based on the set Monitor level and can be called through opening the log file with LogBrowser or by enabling the “Show Monitoring” option again.

Sample:

Object	FKT_LOGO	LinkState	CommState	CommLayer	Port	Param	Name
Ifc1	FIAS	CommOff	Asyn	TCP	5001	LOCAL	FIAS - Oracle Property Interface based on FIAS
Pms1	OPERA	Start	Sync	TCP	5501	LOCAL	OPERA - OPERA PMS

Log: C:\Fidelio\Ifc8.Net\IfcApplication\Tmp\FIAS_Log.XML Cfg: C:\Fidelio\Ifc8.Net\IfcApplication\Tmp\Ifc8NetConfig.Xml

Columns:

Table 5 IFC8 Basic details

Column	Description	Notes
Object	IFC application object (Ifc,Pms)	
FKT_LOGO	Parser setup	
LinkState	Overall vendor initialization status	Alive, CommOff, Start, StartReq
CommState	Communication status	Sync, Asyn, Off
CommLayer	Connection type	TCP/IP, HTTP, Serial (Com), DBS

Column	Description	Notes
Port	Communication port defined	TCP/IP, HTTP, Serial (Com) port
Param	IP address, or Rs232 settings	LOCAL for Address of local PC
Name	Interface Name	Based on FKT_LOGO value and program Caption settings

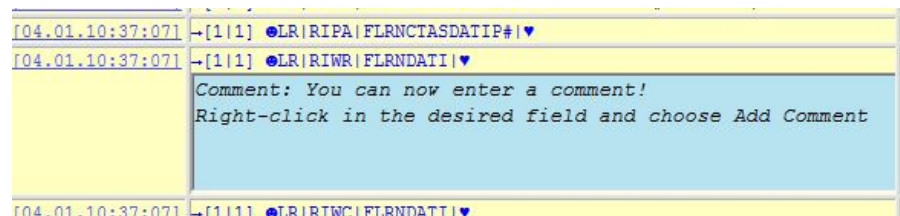
3

Adding Comments to monitoring items

General

It is possible to add comments to specific monitoring items.

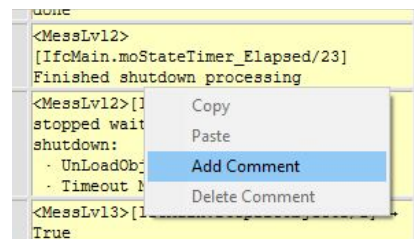
The intention is to give some more details/explanations to optional set bookmarks or error messages in the log file – to send to support.



Adding a comment

To add a comment the “MonitorRefresh” tag must be unticked.

Right-click on one of the yellow monitoring items of lfc, Pms or Main objects. (not possible in Date&Time column or grey fields) and choose context option “Add Comment”.



Enter the comment text into the blue field.

To save the comment to the log file right-click on the Button in the monitor header to save the [Fkt]_log.xml file.

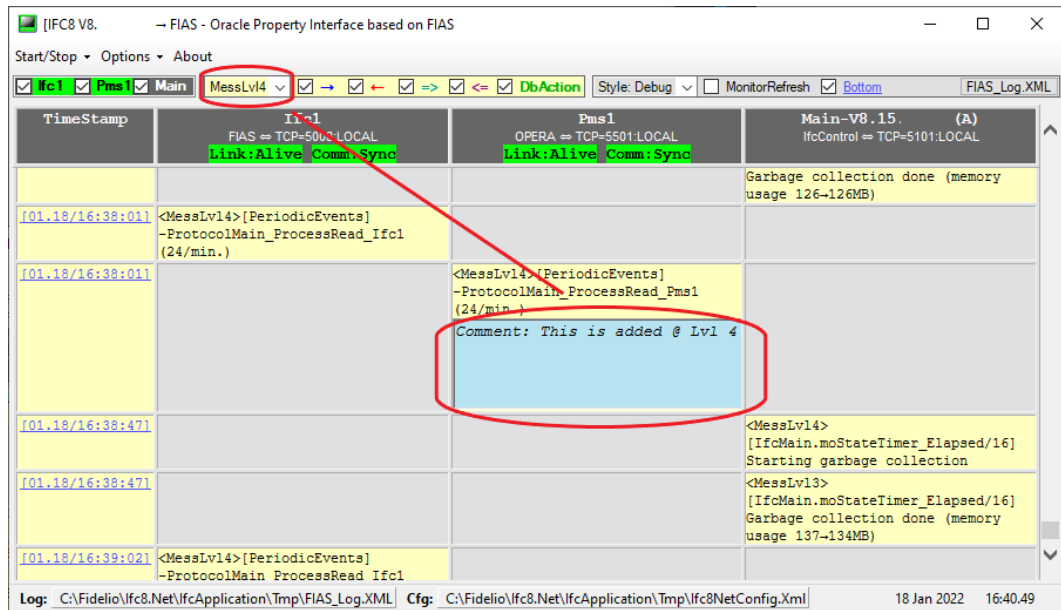
The comment itself will be stored in the main log xml file and will be read at startup.

Finding a comment

To find a comment you can use Ctrl+F or right click in the Yellow Monitoring Items and search for the word Comment, alternatively of course you can search for the explicit text you are looking for within a comment.

 **NOTE:**

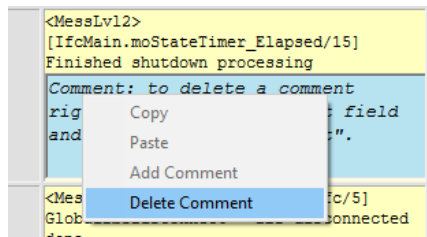
If a comment is created on a Lvl4 exert of the log file.
You will need to ensure your filter is set at least to Lvl4
To locate it!



Deleting a Comment

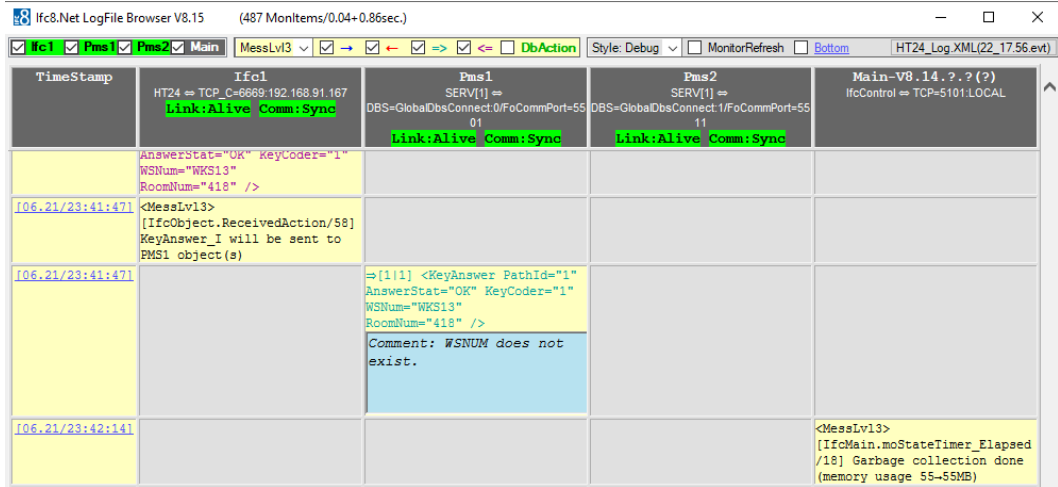
To delete a comment the "MonitorRefresh" tag must be unticked.

Right-click on comment to delete and choose context option "Delete Comment".

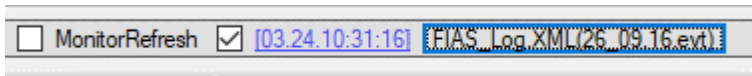


Comments in History Log Files

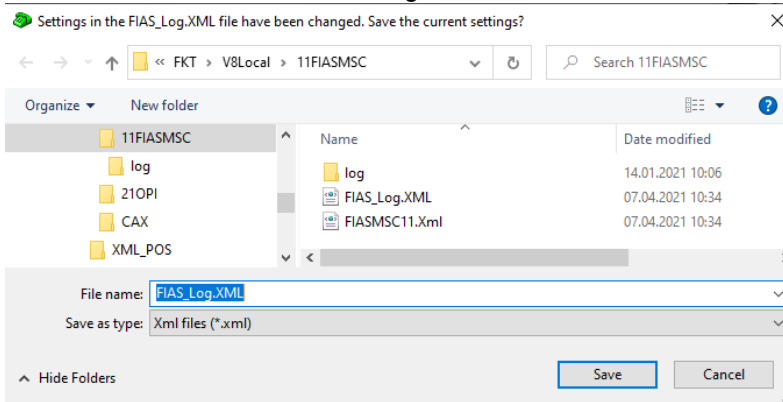
Comments can also be added to history log files (the log files with .evt file extension). Follow the above procedure to add and save comments.



To save an added comment to the logfile, right-click the log file name button in the monitoring header of the application.



The **Save as** browser will open and mark the Ifc main log file (*[FKT]_log.xml*) Confirm the file choice with clicking the **Save** button.



Comments will be always saved and stored in the main log.xml, not in the history log file itself.

4

IFC8.NET IFC log files

IFC8.15.x log files will be created as .evt files using xml / xsl stylesheet.

The new monitoring and the use of these file formats allows to filter content as needed.

Log File Types

Following Log files will be created during IFC8 runtime.

Table 2 Log file names

Log file Name	Description	Notes
[FKT]_Log.xsl	Log file XSL Stylesheet for use with Browser (Internet Explorer only)	Do not change or remove
[FKT]_Log.xml	Main Log file as per FKT Logo Contains Mon Display info (TCP Port, Log level set etc.)	Call this file with LogBrowser Does not contain Communication data
[FKT]_Log.evt	Contains current data	Loads when opening [FKT]_Log.xml
[FKT]_Log.bak	Contains current history data which can be displayed	Will be created out of [FKT]_log.evt when size limit reached
[FKT]_Log_DD_HH.MM.evt	History file	Created out of [FKT]_Log.bak when max size reached

Ifc8.Net log files will be stored in the same folder where the config.xml is located.

(Example):

Name	Date modified	Type	Size
FIAS_Log.evt	18.08.2020 09:31	Classic Event Log	224 KB
FIAS_Log.XML	14.08.2020 10:42	XML Document	1 KB
FIAS_Log.xsl	15.01.2020 14:01	XSL Stylesheet	74 KB
FIAS_Log_01_16.50.evt	30.03.2020 13:27	Classic Event Log	1.501 KB
FIAS_Log_02_09.15.evt	29.05.2020 08:37	Classic Event Log	374 KB
FIAS_Log_03_11.26.evt	01.04.2020 16:50	Classic Event Log	485 KB
FIAS_Log_04_08.58.evt	02.03.2020 10:48	Classic Event Log	78 KB
FIAS_Log_04_09.04.evt	04.03.2020 08:58	Classic Event Log	471 KB
FIAS_Log_04_13.13.evt	04.03.2020 09:04	Classic Event Log	1 KB
FIAS_Log_04_13.15.evt	04.03.2020 13:13	Classic Event Log	1 KB
FIAS_Log_04_13.17.evt	04.03.2020 13:15	Classic Event Log	1 KB
FIAS_Log_04_13.25.evt	04.03.2020 13:17	Classic Event Log	1 KB
FIAS_Log_04_13.26.evt	04.03.2020 13:25	Classic Event Log	1 KB
FIAS_Log_05_07.59.evt	30.04.2020 08:53	Classic Event Log	35 KB
FIAS_Log_07_08.54.evt	05.05.2020 07:59	Classic Event Log	168 KB
FIAS_Log_08_07.28.evt	02.06.2020 09:15	Classic Event Log	453 KB

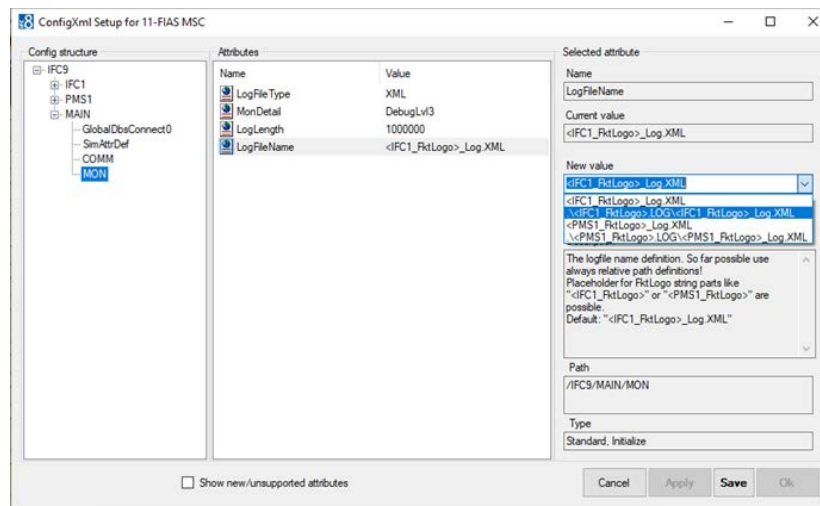
Log File Directory

The directory to store the log files can be changed in the Config Editor:

MAIN node / LogFileName. Choose one of the available options.

Apply and **Save** the settings.

IFC8 will reinitialize.



Log File purge

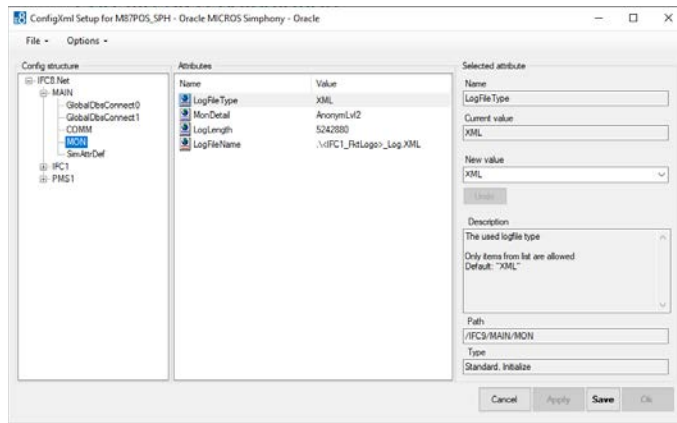
The IFC8 log files will be available for 30 days. Then IFC8 will delete all history log files with file format “. **evt**” older than 30 days.

Log File Size Calculation

The maximum. size of the IFC8 log files will be defined in the Configuration Editor

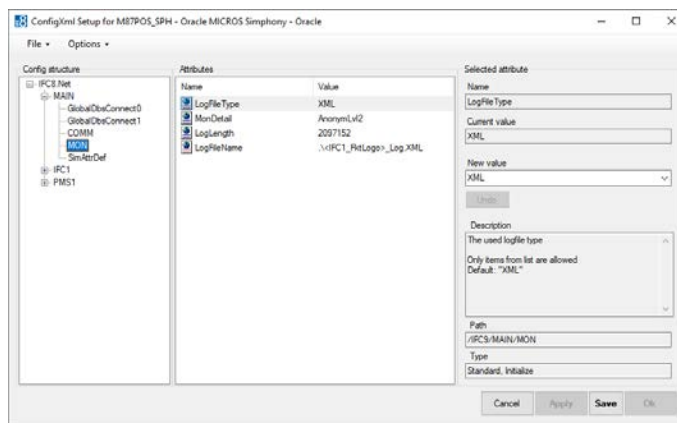
MAIN / MON / LogLength

Default size = 5242880 (5MB)



Sample calculation

Logfile size is set to 2000000 (2MB)



The related logs will be created after reaching the defined LogLength size.

Table 3 Log file size

Log file Name	Size	Notes
[FKT]_Log.xml	1 kb	Does not contain communication data
[FKT]_Log.evt	Max = size of defined LogLength	
[FKT]_Log.bak	Max = size of defined LogLength	
[FKT]_Log_DD_HH.MM.evt	Size can vary	file is created out of .bak file when .bak max. file size reached new file will be created when Date changes

Load Old Logfiles

It is possible to load old IFC8.Net log files saved as .evt files.

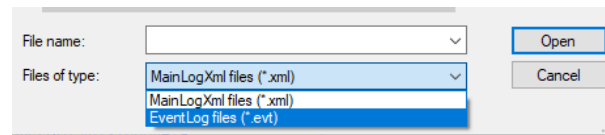
Loading log files is possible within IfcApplication or by calling the [LogBrowser.exe](#) from out the IFC folder:

Load Log file within IfcApplication:

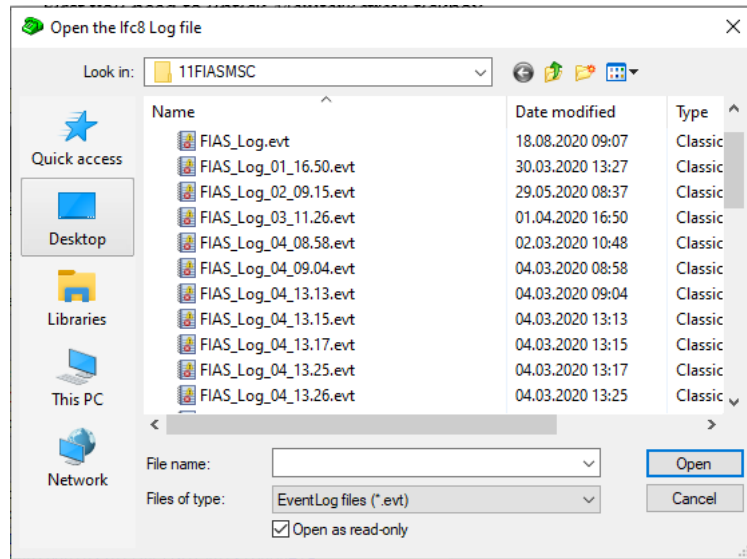
First you need to untick *MonitorRefresh* check box,



Click on the Log file name button in the bar you can choose .xml or .evt log file in the **Open file** option.

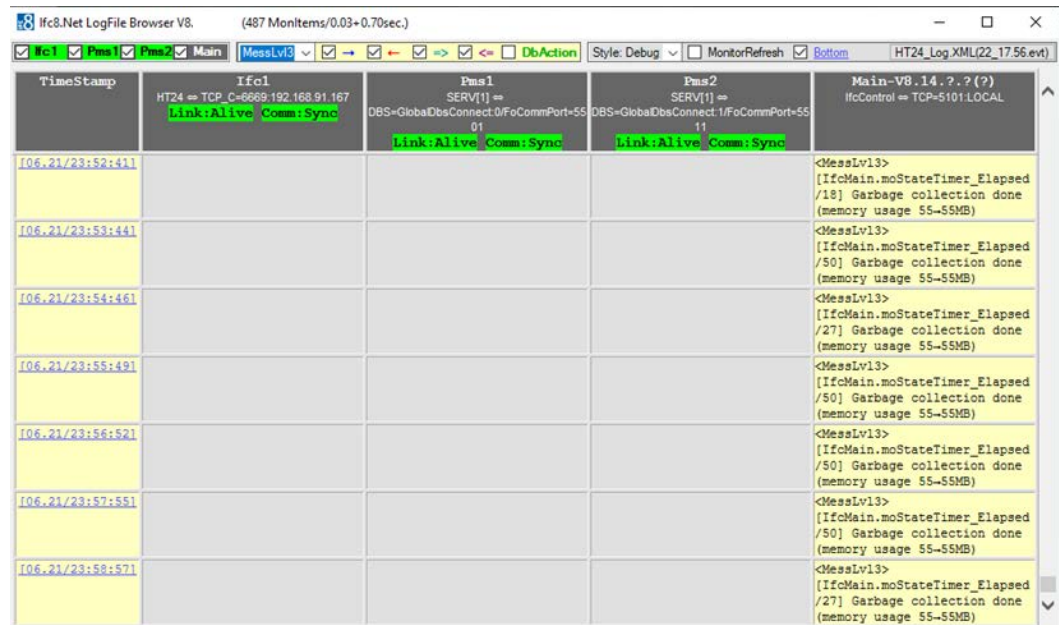


Change the Files of type option to “Event Log files (*.evt)” to load old log files.



Mark the log file to open and click open.

Log file will be loaded. Based on the set log level data will be available



Use the filter options from the Communication bar to display or suppress specific data

Load Log file with Ifc8 LogBrowser

IFC8 **LogBrowser** application is an IFC8.NET program tool which allows to open existing Log files of IFC8.NET communication.

Start **LogBrowser** from any PC within a LAN considering available access to the folder where IFC8 log files reside (network access).

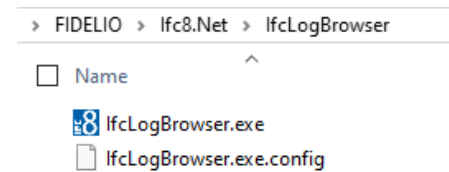
It cannot be used via WAN/Cloud access.

Use the Log browser to show online monitoring of IFC8 communication.

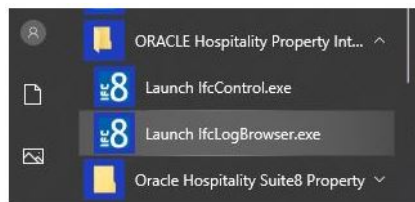
An IT Manager in a hotel can load the current log file on his PC for monitoring IFC being connected and communicating without need to directly access the IFC PC in his Hotel Network.

The IFC LogBrowser is available to install via the IFC8 installer.

After installation the following folder is available:



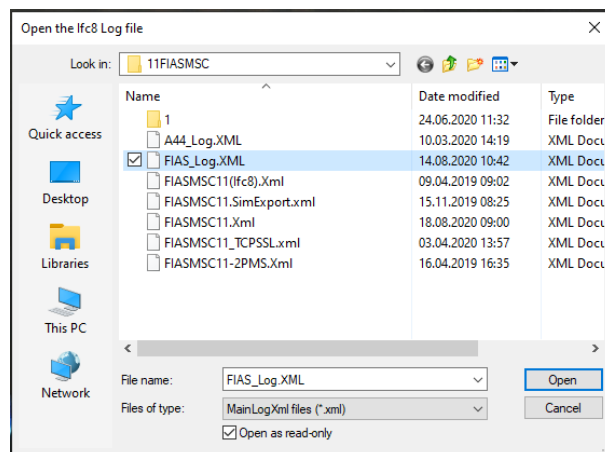
A shortcut is also available in the Windows program menu.



Start LogBrowser:

Click on the IfcLogBrowser.exe to open an IFC8 log file.

The Open File form will open.

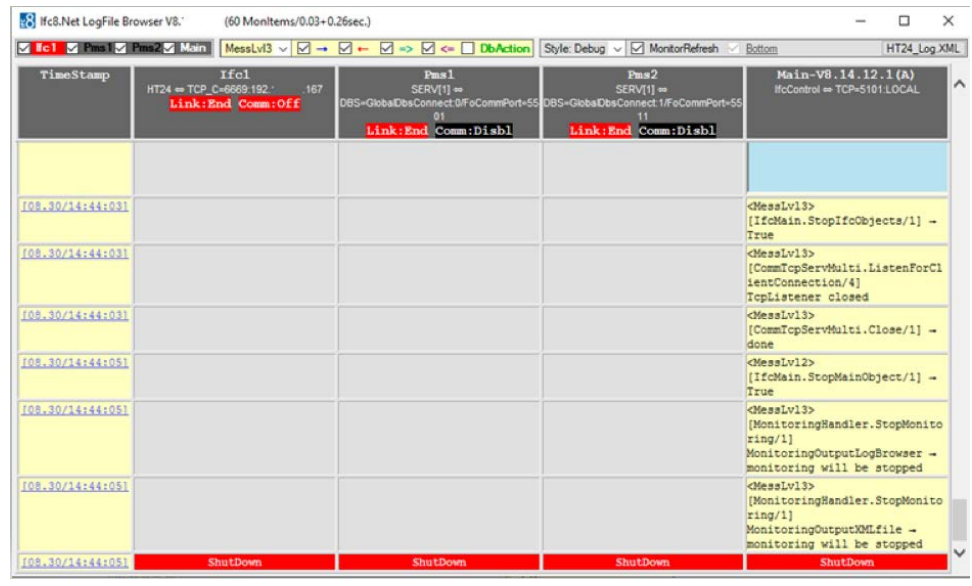


Go to related folder.

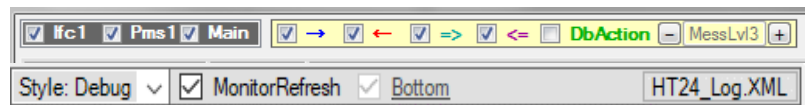
Choose the IFC8 main log file with name **[FKTLogo]_log.xml** (example FIAS_Log.xml)

Click **Open**.

The file will open, and the Log Browser tool will show the current IFC8 Log file / Monitoring.



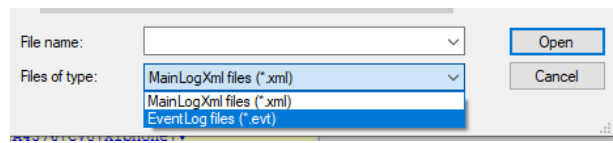
The LogBrowser tool offers the same monitoring option as the IFCApplication so the items to display can be changed manually as per needs and as per set log level at that time.



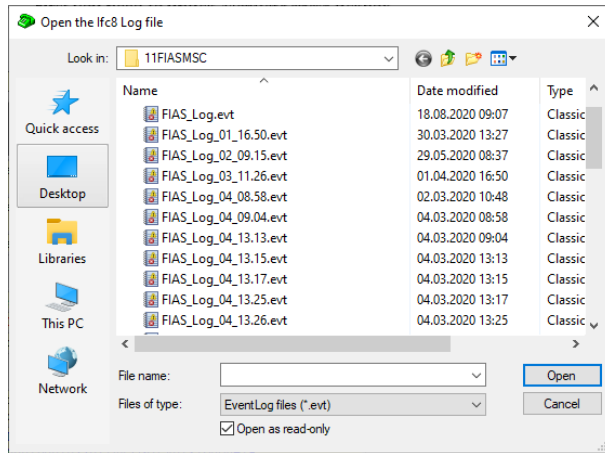
Load Old .evt Log Files

First uncheck the **Monitor Refresh** check box.

Then click on the log file name button in the bar you can choose .xml or .evt log file in the **Open file** option.



Change the Files of type option to “Event Log files (*.evt)” to load old log files



Mark the log file to open and click open.

Log file will be loaded. Based on the set log level data will be available

