

Oracle Hospitality Hotel Property Interface IFC8OperaConnector



Release 8.17.0.0
G55569-01
April 2026

The Oracle logo, consisting of a solid red square with the word "ORACLE" in white, uppercase, sans-serif font centered within it.

ORACLE®

Oracle Hospitality Hotel Property Interface IFC8OperaConnector Release 8.17.0.0

G55569-01

Copyright ©, 2026, Oracle and/or its affiliates. All rights reserved.

This software and related documentation are provided under a license agreement containing restrictions on use and disclosure and are protected by intellectual property laws. Except as expressly permitted in your license agreement or allowed by law, you may not use, copy, reproduce, translate, broadcast, modify, license, transmit, distribute, exhibit, perform, publish, or display any part, in any form, or by any means. Reverse engineering, disassembly, or de-compilation of this software, unless required by law for interoperability, is prohibited.

The information contained herein is subject to change without notice and is not warranted to be error-free. If you find any errors, please report them to us in writing.

If this software or related documentation is delivered to the U.S. Government or anyone licensing it on behalf of the U.S. Government, then the following notice is applicable:

U.S. GOVERNMENT END USERS: Oracle programs, including any operating system, integrated software, any programs installed on the hardware, and/or documentation, delivered to U.S. Government end users are "commercial computer software" pursuant to the applicable Federal Acquisition Regulation and agency-specific supplemental regulations. As such, use, duplication, disclosure, modification, and adaptation of the programs, including any operating system, integrated software, any programs installed on the hardware, and/or documentation, shall be subject to license terms and license restrictions applicable to the programs. No other rights are granted to the U.S. Government.

This software or hardware is developed for general use in a variety of information management applications. It is not developed or intended for use in any inherently dangerous applications, including applications that may create a risk of personal injury. If you use this software or hardware in dangerous applications, then you shall be responsible to take all appropriate fail-safe, backup, redundancy, and other measures to ensure its safe use. Oracle Corporation and its affiliates disclaim any liability for any damages caused by use of this software or hardware in dangerous applications.

Oracle and Java are registered trademarks of Oracle and/or its affiliates. Other names may be trademarks of their respective owners.

Intel and Intel Xeon are trademarks or registered trademarks of Intel Corporation. All SPARC trademarks are used under license and are trademarks or registered trademarks of SPARC International, Inc. AMD, Opteron, the AMD logo, and the AMD Opteron logo are trademarks or registered trademarks of Advanced Micro Devices. UNIX is a registered trademark of The Open Group.

This software or hardware and documentation may provide access to or information about content, products, and services from third parties. Oracle Corporation and its affiliates are not responsible for and expressly disclaim all warranties of any kind with respect to third-party content, products, and services unless otherwise set forth in an applicable agreement between you and Oracle. Oracle Corporation and its affiliates will not be responsible for any loss, costs, or damages incurred due to your access to or use of third-party content, products, or services, except as set forth in an applicable agreement between you and Oracle.

Contents

Contents	3
<hr/>	
Preface	iv
<hr/>	
1 General	5
<hr/>	
2 Installing Ifc8OperaConnector on a Workstation	6
<hr/>	
3 Overview Ifc8OperaConnector Menu	10
<hr/>	
File Menu	10
Help Menu (?)	11
<hr/>	
4 Overview Ifc8OperaConnector Configuration Form	12
<hr/>	
WebService Settings	14
General Settings	14
Ifc8 Certificate	15
Ifc Control Settings	15
Log Settings	15
Control Section	16
<hr/>	
5 IFC8OperaConnector Configuration After Initial Install	17
<hr/>	
6 Password Rotation Explained	18
<hr/>	
7 Creating a Certificate for IFC8OperaConnector	19
<hr/>	
Creating Certificate Through IFC Application	19
Importing Certificate into Ifc8OperaConnector	21
Adding a Certificate	22
Re-assigning Certificates	24
<hr/>	
8 IFC8OperaConnector Log files	25
<hr/>	

Preface

Purpose

This guide explains the common handling of the Ifc8OperaConnector module.

Audience

This document is intended for system administrators, support, and users familiar with the Hotel Property Interface application IFC8.

Customer Support

To contact Oracle Customer Support, access Customer Support Portal at the following URL:

<https://iccp.custhelp.com>

When contacting Customer Support, please provide the following:

- Product version and program/module name
- Functional and technical description of the problem (include business impact)
- Detailed step-by-step instructions to re-create
- Exact error message received
- Screen shots of each step you take

Documentation

Oracle Hospitality product documentation is available on the Oracle Help Center at

<http://docs.oracle.com/en/industries/hospitality/>

Table 1 Revision History

Date	Description
April 2026	<ul style="list-style-type: none">• Version update 8.17.0.0• Support for .NET 10 x86 Desktop Runtimes (Required)• Configuration: New field to choose OPERA version (OPERA Cloud, OPERA V5, Auto detect)

1 General

The Ifc8OperaConnector is used to communicate between each IFC8 instance and the Opera PMS Web Service. It is used to receive actions from OPERA like check-in/checkout notification, Key requests, Credit card requests pass these to the individual vendor software's and relay the responses back to the PMS.

The Ifc8OperaConnector replaces the legacy OperalfcController service. It offers state-of-the-art technology, latest security options based on latest .NET framework.

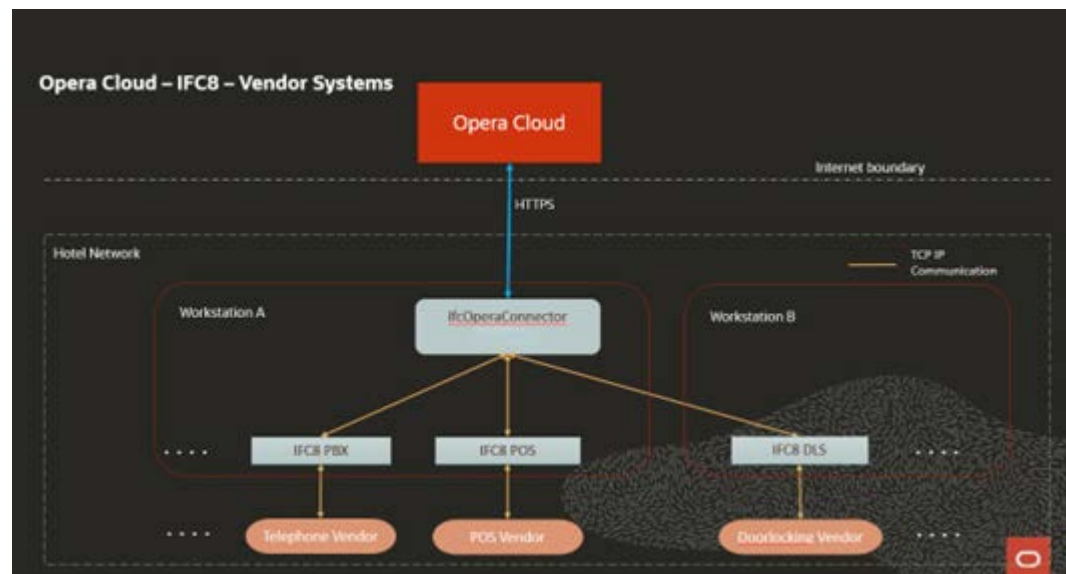
Installation of the Ifc8OperaConnector is done through the Ifc8OperaConnector Install wizard which is part of the Ifc8_Release_Installer.

It is required to install .NET Desktop Runtimes version 10.x x86 on the PC where the Ifc8OperaConnector will be installed.

It is not possible to run the legacy OperalfcController service and the new Ifc8OperaConnector at same time.

NOTE:

Software release can be downloaded @ <https://edelivery.oracle.com>
Ifc8OperaConnector Install wizard is part of the Ifc8_Release_Installer
Patch Releases through your Oracle Support Portal.



2

Installing Ifc8OperaConnector on a Workstation

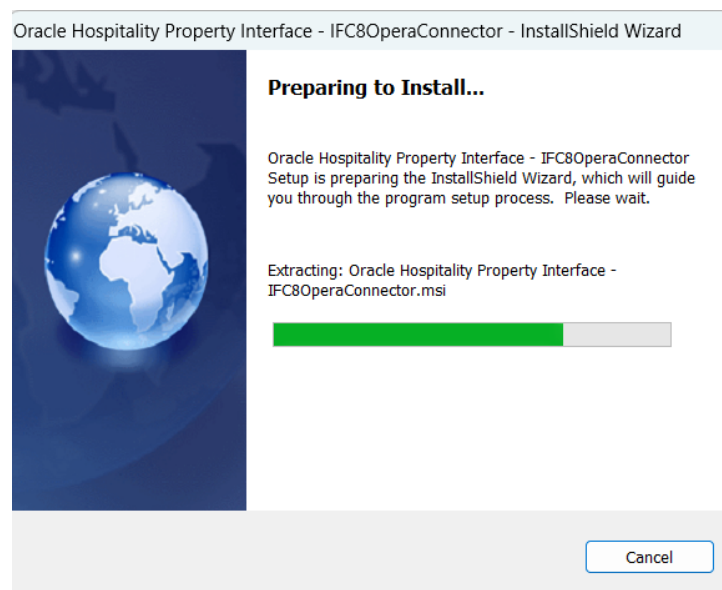
 **NOTE:**

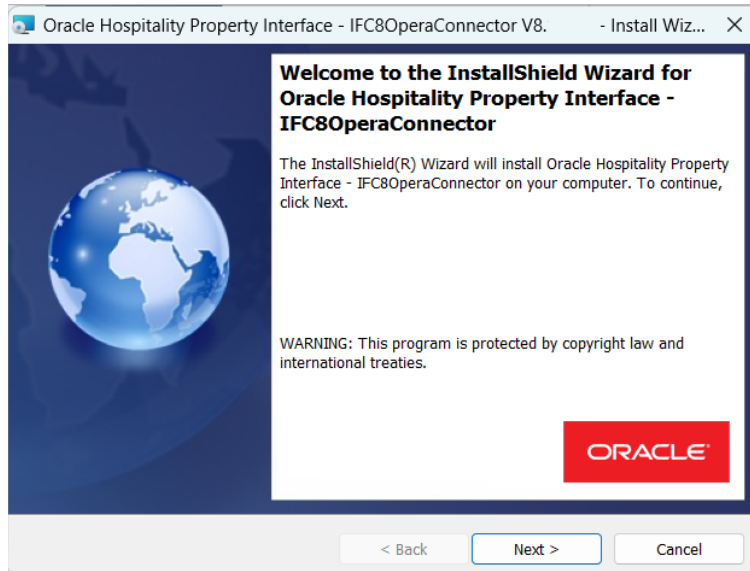
Please verify that .Net Desktop Version 10.0 (32 bit) or higher is installed on your machine prior to preceding.

1. Download the **IFC8OperaConnectorSetup.exe** and store it on the workstation where it is to be installed. This would typically be the same workstation where the Ifc8 Software is to be Installed.
2. Right click and execute **Ifc8ConnectorSet.exe** as administrator (FULL Local Admin rights are required).



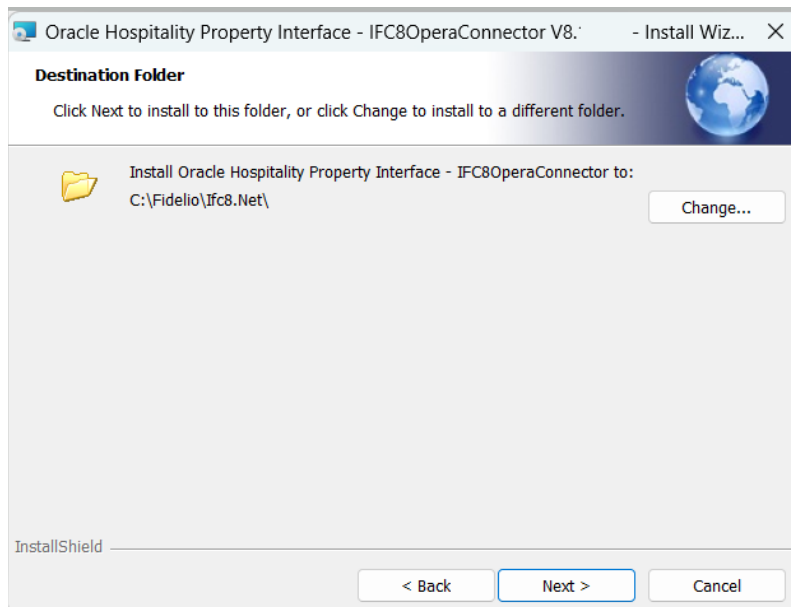
The Installer starts.



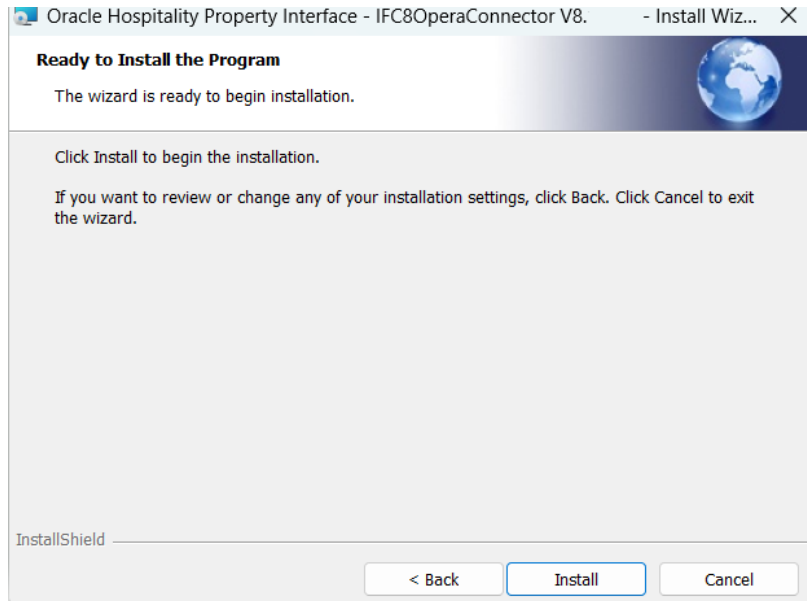


3. Select **Next**

4. Choose the path where to install the IFC8OperaConnector (default & recommended is **C:\Fidelio\Ifc8.Net**).



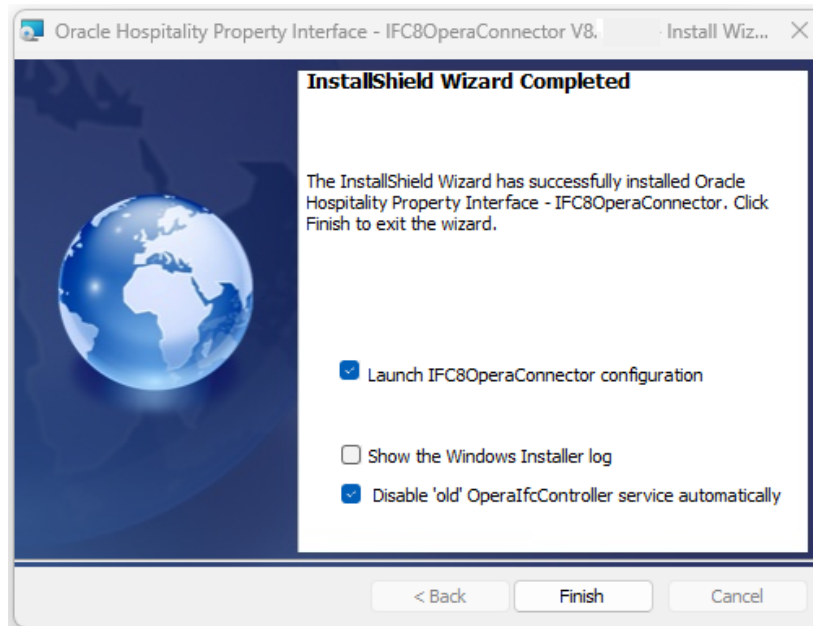
5. Select **Next**.



6. A final confirmation is requested before the Installation commences.

7. Select **Install** to continue else cancel to abort.

The installation routine will complete.



The screen offers following options:

Launch IFC8OperaConnector Configuration

allow switch to the configuration form for the new installed Ifc8OperaConnector.

Show the Windows Installer

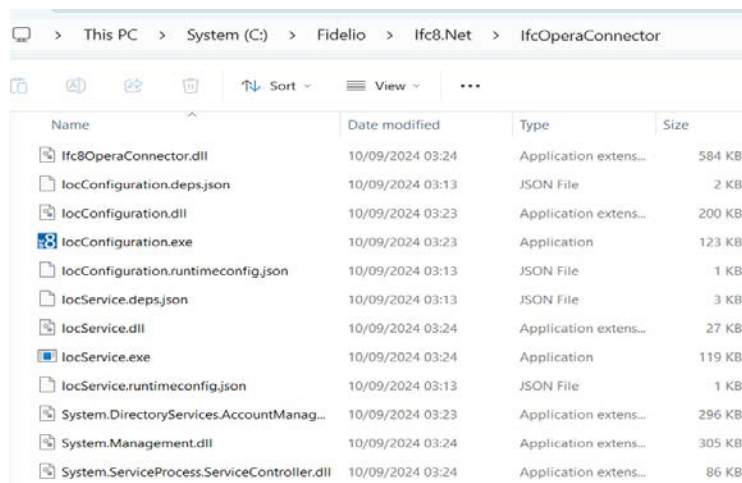
log for review in case of issues occurred during installation.

Disable 'old' OperalfcController service automatically

this will set the Service Startup type of the installed OperalfcController service to "Manual" so it will no longer startup automatically.

8. Select **Finish** and move on to the configuration.

Files are installed to the defined path:

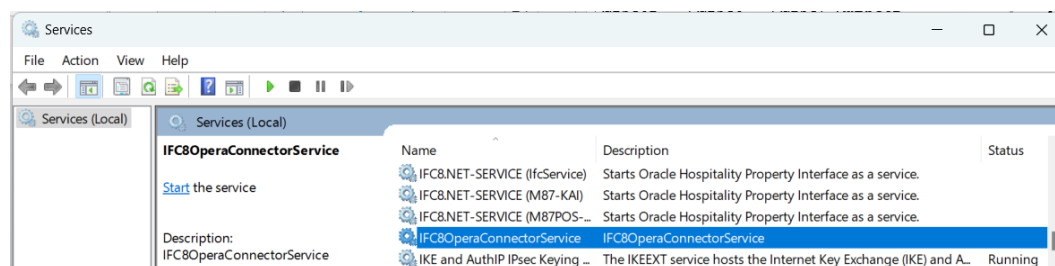


Name	Date modified	Type	Size
Ifc8OperaConnector.dll	10/09/2024 03:24	Application extens...	584 KB
locConfiguration.deps.json	10/09/2024 03:13	JSON File	2 KB
locConfiguration.dll	10/09/2024 03:23	Application extens...	200 KB
locConfiguration.exe	10/09/2024 03:23	Application	123 KB
locConfiguration.runtimeconfig.json	10/09/2024 03:13	JSON File	1 KB
locService.deps.json	10/09/2024 03:13	JSON File	3 KB
locService.dll	10/09/2024 03:24	Application extens...	27 KB
locService.exe	10/09/2024 03:24	Application	119 KB
locService.runtimeconfig.json	10/09/2024 03:13	JSON File	1 KB
System.DirectoryServices.AccountManag...	10/09/2024 03:23	Application extens...	296 KB
System.Management.dll	10/09/2024 03:24	Application extens...	305 KB
System.ServiceProcess.ServiceController.dll	10/09/2024 03:24	Application extens...	86 KB

NOTE:

The Ifc8OperaConnector uses an own set of dll's which will be installed and located on the same path as denoted during the installation.

The Ifc8OperaConnectorService has been installed and can be found under the services tab of the **taskmgr** or through **services.msc**.

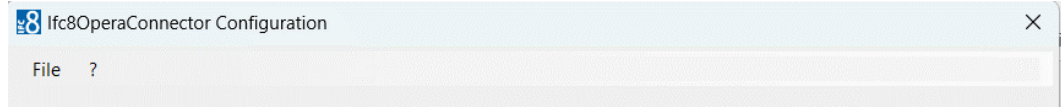


Name	Description	Status
IFC8OperaConnectorService	IFC8OperaConnectorService	Running

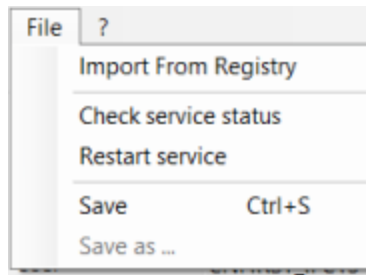
Next the IfcOperaConnector will launch the **Configuration Form**.

3

Overview Ifc8OperaConnector Menu



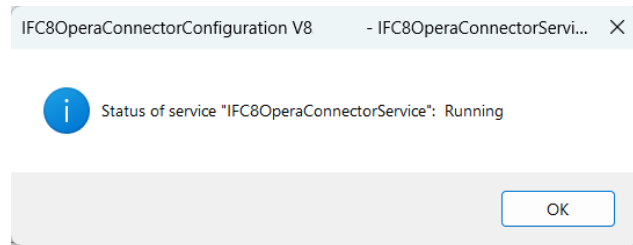
File Menu



Import from Registry: Import Existing settings from the Registry.

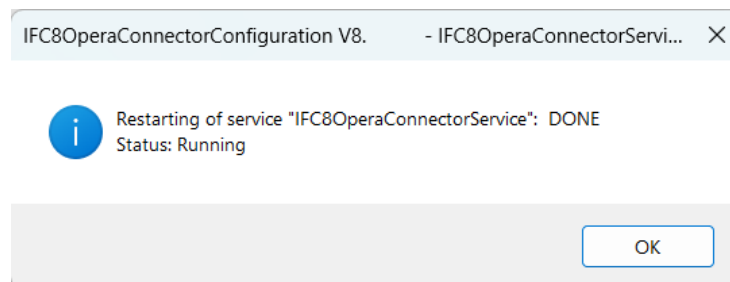
Check Service Status: Check and update the status of the Ifc8OperaConnectorService.

When executed a pop up will appear with the status.



Restart service: Restart the Ifc8OperaConnectorService. (admin. Rights required)

A pop up will confirm the action.

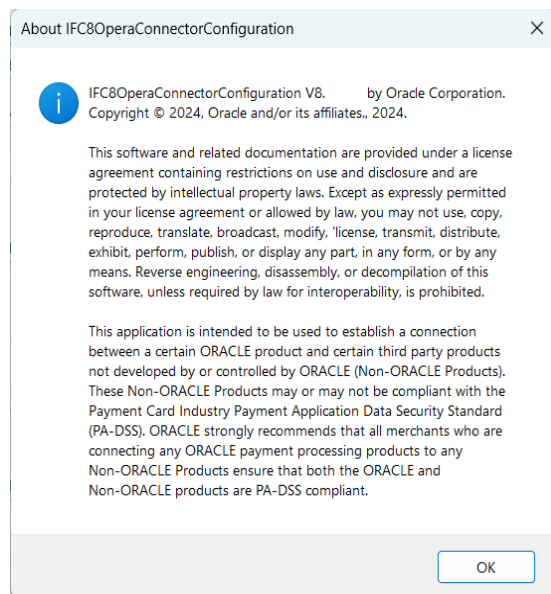


Save: Save the configuration currently entered in the the Ifc8OperaConnector Configuration form.

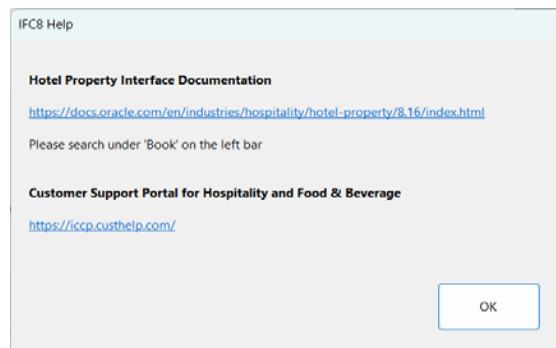
Help Menu (?)



About: Displays Version and Copyright information



Displays Links to further information and support.



4

Overview Ifc8OperaConnector Configuration Form

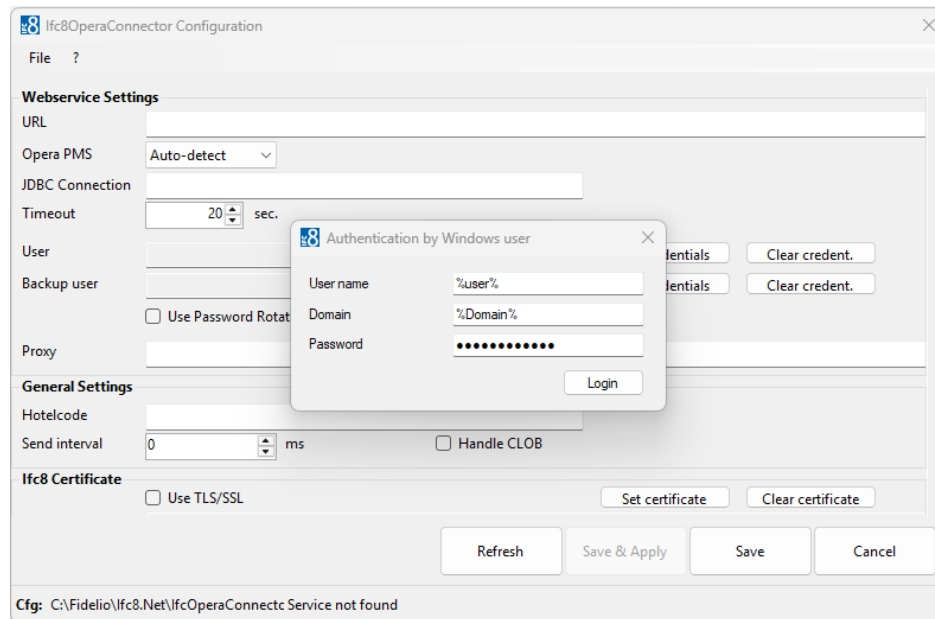
The screenshot shows the 'Ifc8OperaConnector Configuration' window. It is divided into several sections, each highlighted with an orange border and a numbered callout:

- 1 Webservice Settings:** Includes fields for URL, Opera PMS (Auto-detect), JDBC Connection, Timeout (20 sec), User, Backup user, and checkboxes for Use Password Rotation and Proxy.
- 2 General Settings:** Includes Hotelcode, Send interval (50 ms), and a checked checkbox for Handle CLOB.
- 3 IfcControl Settings:** Includes Port, checkboxes for Use TLS/SSL, and fields for Server Certificate and Client Certificate.
- 4 Log Settings:** Includes Logfile, Max. log size (3 MB), and Log Level (DebugLvl4).
- 5 Control Sections:** Includes buttons for Refresh, Save & Apply, Save, and Cancel.

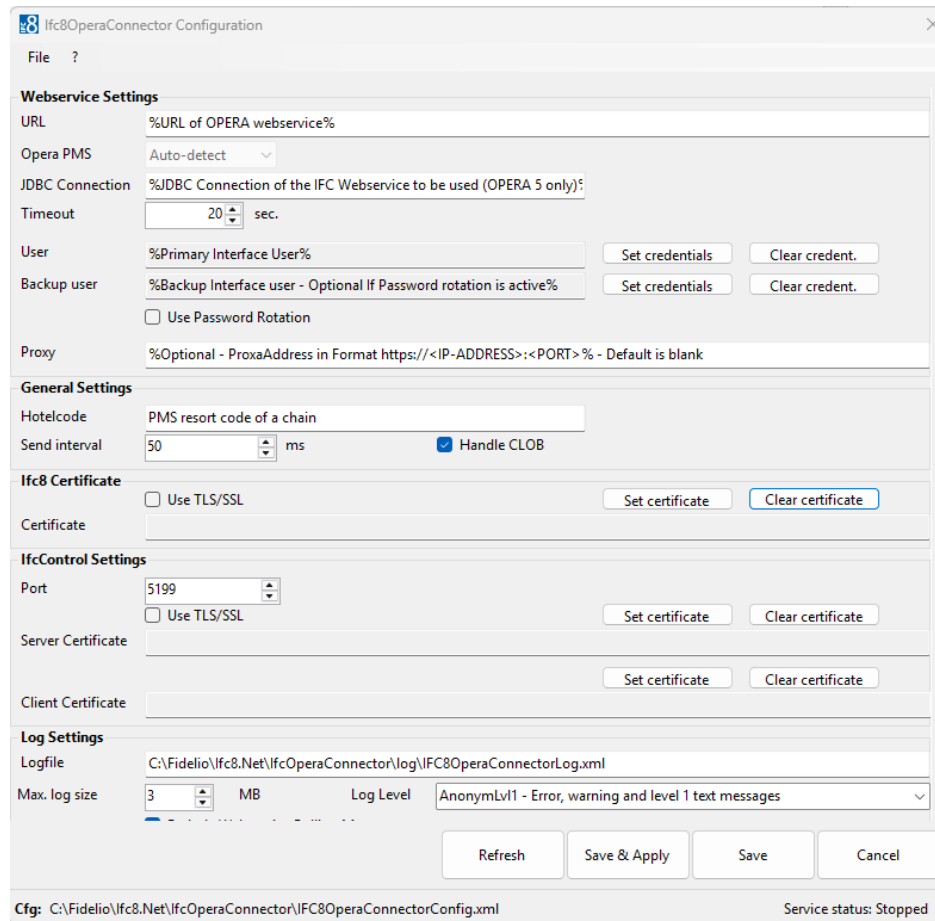
At the bottom, the configuration file path is shown as 'Cfg: C:\Fidelio\Ifc8.Net\IfcOperaConnector\IFC8OperaConnectorConfig.xml' and the service status is 'Stopped'.

1. Webservice Settings
2. General Settings
3. IfcControl Settings
4. Log Settings
5. Control Sections

Detailed explanation below



Once successfully Authenticated the following Configuration Options are available.



WebService Settings:

URL	The Opera URL that services connect to
OPERA PMS	Specify the OPERA version (OPERA Cloud or OPERA V5) in case of issues with specific Webservice messages, Default = Auto detect
JDBC Connection	The JNDI Connection for the database.
Timeout	Timeout in secs before Get Call will be terminated and a new call started.
User	The interface User for SSD (Shared Security Domain) or OCIM (Oracle Cloud Identity Manager).
Set Credentials	Ability to set User and Password for SSD or OCIM.
Clear Credent.	The Ability to clear the credentials entered
Backup User	The Backup User for SSD (Shared Security Domain) or OCIM (Oracle Cloud Identity Manager). If Password Rotation is Active.
Set Credentials	Ability to set Backup User and Password for SSD or OCIM.
Clear Credent	The Ability to clear the Backup credentials entered.
Use Password Rotation	Activate Password Rotation. See Notes Below
Proxy:	OPTIONAL Proxy Address in format:http[s]://<IP_Address>:<Port>% Default is Blank.

General Settings

- Hotel Code: The Resort Code from Opera PMS
- Send Interval: Defaults to 50ms.
- Handle Clob: Select to Activate CLOB (Character Large Object) Handling. Needed for Bill View and Large Guest Check Handling as an example.

Ifc8 Certificate

- Use TSL/SSL Select to add a TLS (Transport Layer Security) or SSL (Secure Socket Layer) Certificate.
- Set Certificate Ability to select certificate to use for TLS / SSL communication.
- Clear Certificate Ability to clear out existing TLS/SSL Certificate.
- Certificate: Shows the Certificate in use if configured.

If you wish to create a certificate this will be covered in a later [section](#).

Ifc Control Settings

- Port Denotes the Port to be used for IfcControl communication.
- Use TLS/SSL Use TLS or SSL to secure communication.
- Set Certificate Select Server certificate to use for TLS / SSL communication.
- Clear Certificate Ability to clear out existing TLS/SSL Server Certificate.
- Server Shows Server Certificate currently configured.
- Set Certificate Select Client certificate to use for TLS / SSL communication.
- Clear Certificate Ability to clear out existing TLS/SSL Client Certificate.
- Client Shows Client Certificate currently configured.

Log Settings

- Logfile Location of Ifc8OperaConnector Log File.
- Max. Log Size Maximum Size of Log File before new file is written.

Exclude Webservice Polling Messages:

Used to NOT log sanity check record in the Ifc8OperaConnectorLog.

Default is True.

This is done “unclutter” the log file with hundreds of records that generally does not assist in troubleshooting.

Control Section




Save & Apply	Save current Configuration and restart Service.
Save	Save current Configuration.
Cancel	Cancel current operation and leave program.
Cfg	Displays the location of the configuration file.
Service Status	Displays the current status of the Ifc8OperaConnector Service. (Stopped, Starting, Stopping or Running)

Once you have completed the necessary configuration please select **Save & Apply** to complete.

5

IFC8OperaConnector Configuration After Initial Install

If you need to access the IFC8OperaConnector after the initial, it can be accessed by executing the locConfiguration.exe located in the directory selected at the time of installation.

 locConfiguration.dll	10/09/2024 03:23	Application extens...	200 KB
 locConfiguration.exe	10/09/2024 03:23	Application	123 KB
 locConfiguration.runtimeconfig.json	10/09/2024 03:13	JSON File	1 KB

When executed you must Authenticate with a Windows user with **Full Local Admin Rights**

6

Password Rotation Explained

Password Rotation with IFC8OperaConnector

About the feature

When selected, this feature allows the Ifc8OperaConnector Controller to automatically create and manage the required Property Interface IFC User Credentials for connecting with OPERA Cloud through automatic password rotation. Automatic password rotation is as the names suggest an automated process where system-generated passwords are periodically changed without manual intervention. This practice enhances security by ensuring that passwords are regularly updated, reducing the risk of unauthorized access. With this feature enabled, you do not need to manually reset the password for any IFC users in future.

Key Considerations

Valid user credentials must be entered during the initial one-time setup.

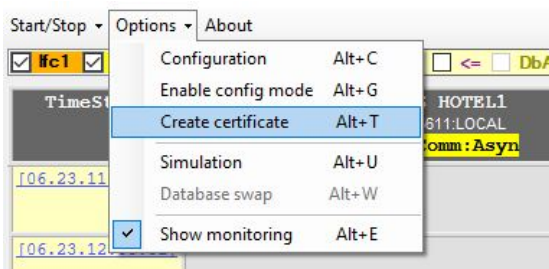
If the checkbox is not selected, the feature will remain disabled. This means the Ifc8OperaConnector will NOT automatically manage the user credentials for you. Therefore, you will need to manually reset the user passwords in OPERA Cloud Role Manager when they expire.

7

Creating a Certificate for IFC8OperaConnector

Creating Certificate Through IFC Application

In the IfcApplication select the **Options** menu and choose **Create certificate**.



A new form "Create a new certificate" opens.

A screenshot of a dialog box titled "Create a new certificate". It contains the following fields and controls:

- Certificate name:** A text box containing the path "C:\Fidelio\Ifc8.Net\IfcApplication_FKT_LOGO\HT24\Ifc8.Net-Cert(HT24)".
- Password (min. length 8, req. 1 upper & numeric & symbol char.):** A text box filled with 8 dots.
- Validity (1-5 years):** A text box containing the number "5".
- Subject Alternative Name (SAN → DNS verification - optional):** An empty text box.
- At the bottom, there are "Cancel" and "OK" buttons.

- **Certificate name:** Define path and name of the certificates.
- **Certificate password:** Define the certificate password.
- **Validity:** Length of validity in years
- **SAN:** If a subject alternative name is referred please enter it here (optional)

 **NOTE:**

Password must have min, length of 12 characters, must contain 1 upper letter, 1 numeric char. And 1 symbol char.

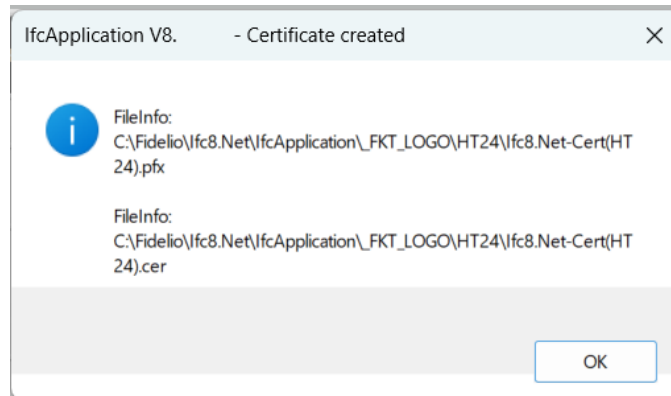
 **NOTE:**

Validity: define the validity of the certificate (in years). must **NOT** be more than **5 years!!**



Do not forget to properly note down the password and insure it is passed on to the person(s) responsible on site.

1. Click **Cancel** to revert.
2. Click **OK** to confirm certificate definition.

A confirmation window opens with the certificate path and name.



Find the certificates in the defined directory.

 Ifc8.Net-Cert(HT24).pfx	06/10/2024 17:04	Personal Informati...	3 KB
 Ifc8.Net-Cert(HT24).cer	06/10/2024 17:04	Security Certificate	1 KB

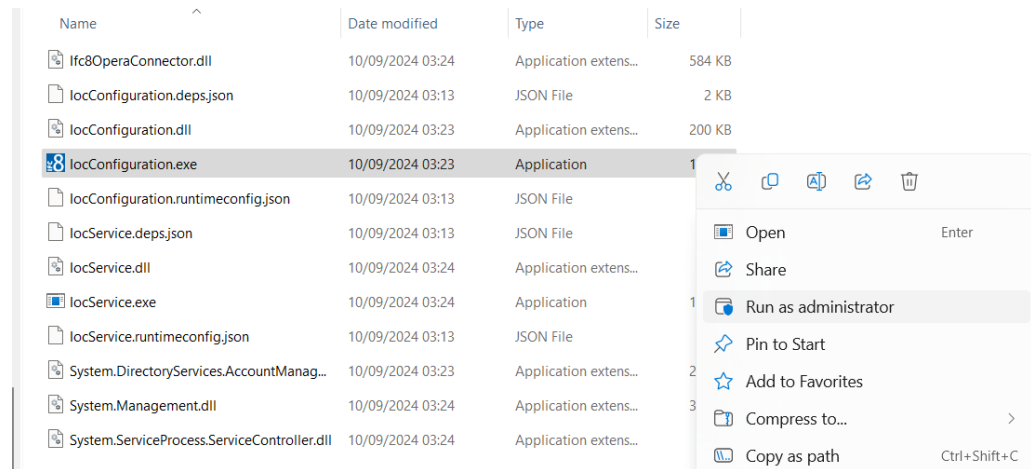
Importing Certificate into lfc8OperaConnector

To assign a certificate to the lfc8OperaConnector.

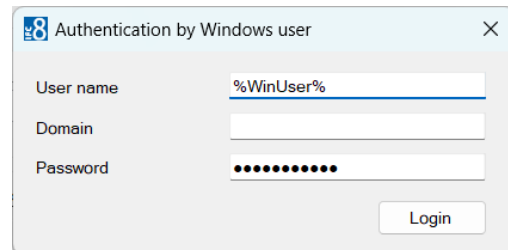
1. Go to the Directory where the lfc8OperaConnector is Installed.

The default is C:\Fidelio\lfc8.Net\lfcOperaConnector.

2. Launch the locConfiguration.exe as Administrator.



Windows Authentication is required now.



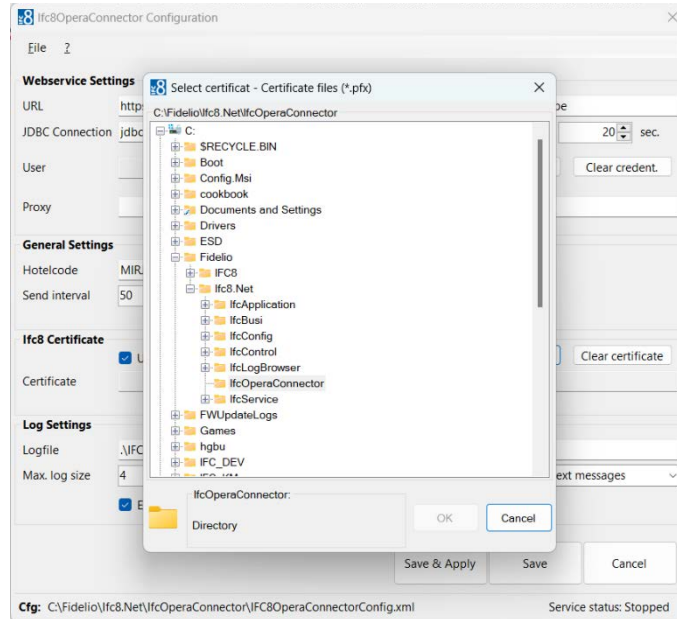
3. Once the the lfc8OperaConnector form opens go to lfc8 Certificate section and select the **Use TLS/SSL** box.

Then select **Set Certificate**.



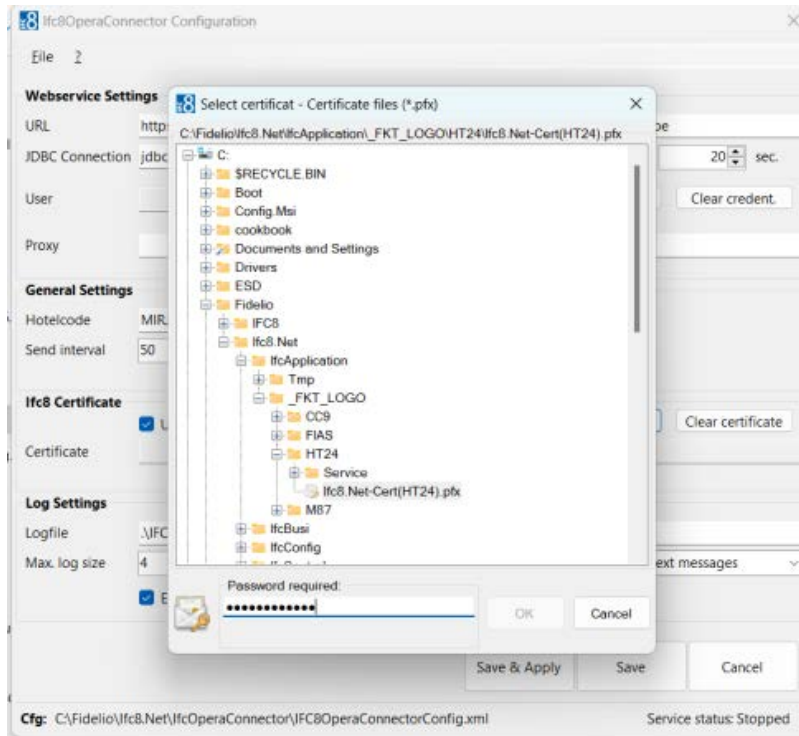
Adding a Certificate

1. Select the the **Set Certificate** button and then Select file form will open.



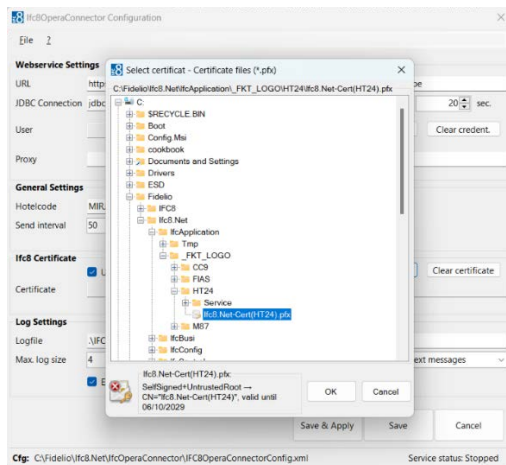
2. Navigate to the directory where your .pfx file is located and choose the certificate (pfx file) to assign.

As the pfx certificate requires a password enter the corresponding password.



3. Select **OK** to confirm certificate choice.

The form displays the certificate information.



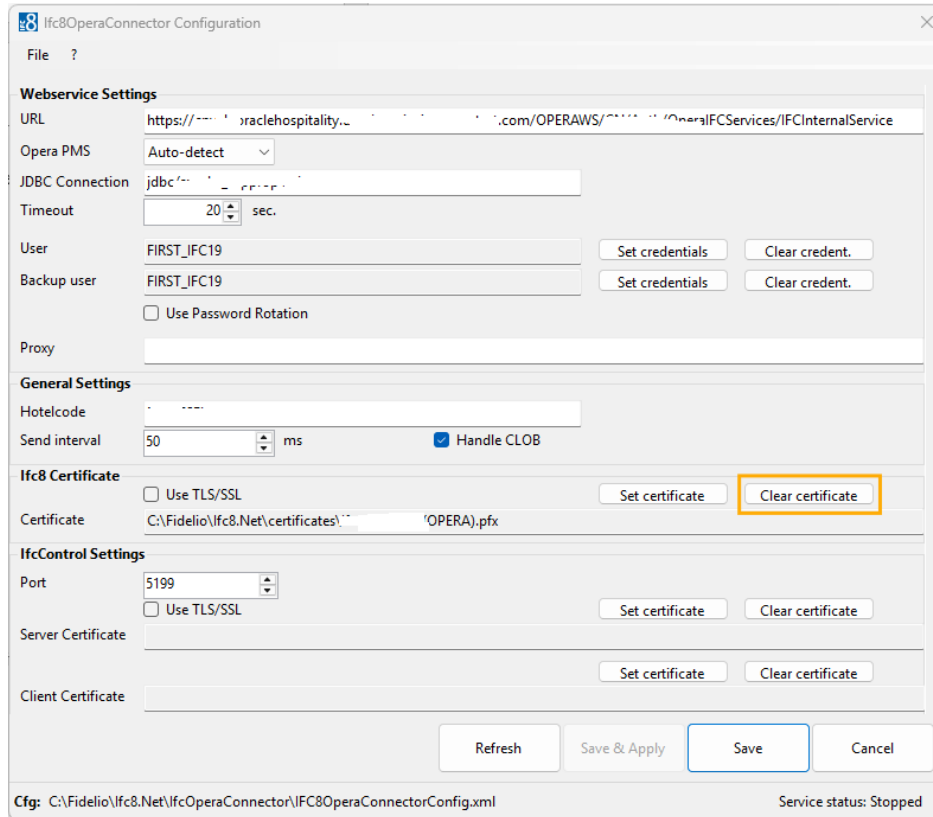
NOTE:

Repeat the process if you wish to add multiple certificates. Each certificate must have a unique name.

Re-assigning Certificates

In case existing certificates will be replaced with new ones, the re-assignment will work in a similar way.

First clear out the existing certificate using the clear certificate button.



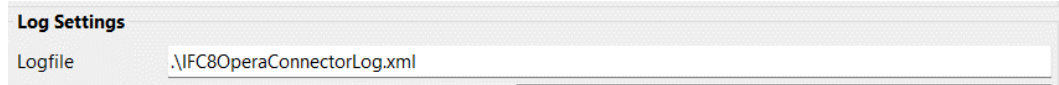
Then proceed to install then new certificate using the Set Certificate Button.

As [described](#) above.

8


IFC8OperaConnector Log files

The Log files can be retrieved and viewed from the directory defined in the IFC8OperaConnector Configuration.



In this example the directory is the same as the Installation of the **lfc8OperaConnector.exe** (*C:\Fidelio\lfc8.Net\lfc8OperaConnector*) is the default.

Here you will find the log files in the **.evt** format.

 IFC8OperaConnectorLog_06_16.31.evt	04/10/2024 10:00	EVT File	1 KB
--	------------------	----------	------

These can then be opened and reviewed using the IFC8 Log Browser.

A full User Guide to [lfc8 Monitoring / Log Browser](#) can be found in the books section of the IFC8 Property Interface release. This can be accessed via the help section "?" of the IFC8OperaConnector menu alternatively by pressing **Alt+H**.