

Oracle® Banking Trade Finance Installer Database Setup



Release 14.7.5.0.0

G15569-01

September 2024

The Oracle logo, consisting of a solid red square with the word "ORACLE" in white, uppercase, sans-serif font centered within it.

ORACLE®

Oracle Banking Trade Finance Installer Database Setup, Release 14.7.5.0.0

G15569-01

Copyright © 2007, 2024, Oracle and/or its affiliates.

Primary Authors: (primary author), (primary author)

Contributing Authors: (contributing author), (contributing author)

Contributors: (contributor), (contributor)

This software and related documentation are provided under a license agreement containing restrictions on use and disclosure and are protected by intellectual property laws. Except as expressly permitted in your license agreement or allowed by law, you may not use, copy, reproduce, translate, broadcast, modify, license, transmit, distribute, exhibit, perform, publish, or display any part, in any form, or by any means. Reverse engineering, disassembly, or decompilation of this software, unless required by law for interoperability, is prohibited.

The information contained herein is subject to change without notice and is not warranted to be error-free. If you find any errors, please report them to us in writing.

If this is software, software documentation, data (as defined in the Federal Acquisition Regulation), or related documentation that is delivered to the U.S. Government or anyone licensing it on behalf of the U.S. Government, then the following notice is applicable:

U.S. GOVERNMENT END USERS: Oracle programs (including any operating system, integrated software, any programs embedded, installed, or activated on delivered hardware, and modifications of such programs) and Oracle computer documentation or other Oracle data delivered to or accessed by U.S. Government end users are "commercial computer software," "commercial computer software documentation," or "limited rights data" pursuant to the applicable Federal Acquisition Regulation and agency-specific supplemental regulations. As such, the use, reproduction, duplication, release, display, disclosure, modification, preparation of derivative works, and/or adaptation of i) Oracle programs (including any operating system, integrated software, any programs embedded, installed, or activated on delivered hardware, and modifications of such programs), ii) Oracle computer documentation and/or iii) other Oracle data, is subject to the rights and limitations specified in the license contained in the applicable contract. The terms governing the U.S. Government's use of Oracle cloud services are defined by the applicable contract for such services. No other rights are granted to the U.S. Government.

This software or hardware is developed for general use in a variety of information management applications. It is not developed or intended for use in any inherently dangerous applications, including applications that may create a risk of personal injury. If you use this software or hardware in dangerous applications, then you shall be responsible to take all appropriate fail-safe, backup, redundancy, and other measures to ensure its safe use. Oracle Corporation and its affiliates disclaim any liability for any damages caused by use of this software or hardware in dangerous applications.

Oracle®, Java, MySQL, and NetSuite are registered trademarks of Oracle and/or its affiliates. Other names may be trademarks of their respective owners.

Intel and Intel Inside are trademarks or registered trademarks of Intel Corporation. All SPARC trademarks are used under license and are trademarks or registered trademarks of SPARC International, Inc. AMD, Epyc, and the AMD logo are trademarks or registered trademarks of Advanced Micro Devices. UNIX is a registered trademark of The Open Group.

This software or hardware and documentation may provide access to or information about content, products, and services from third parties. Oracle Corporation and its affiliates are not responsible for and expressly disclaim all warranties of any kind with respect to third-party content, products, and services unless otherwise set forth in an applicable agreement between you and Oracle. Oracle Corporation and its affiliates will not be responsible for any loss, costs, or damages incurred due to your access to or use of third-party content, products, or services, except as set forth in an applicable agreement between you and Oracle.

Contents

1 Installing Oracle Banking Trade Finance Database

1.1	Introduction	1-1
1.2	Creating Schema by Importing Full Dump	1-1
1.3	Creating Schema from Shipment Media	1-1
1.3.1	Backend Setup using Silent Installer	1-1
1.3.2	Basic Setup using GUI Installer	1-2

List of Examples

1-1 OBTF INSTALLATION

1-2

1

Installing Oracle Banking Trade Finance Database

1.1 Introduction

Oracle Banking Trade Finance database can be installed in one of the following methods.

- Import full dump – Import the Oracle Banking Trade Finance objects into an empty schema using full dump. This is a manual activity.
- From shipment media – Load the shipment media objects into an empty schema using Installer.

These methods are discussed in detail under the following heads.

1.2 Creating Schema by Importing Full Dump

Under this method, you need to manually import the Oracle Banking Trade Finance DMP file into the Oracle Banking Trade Finance schema. This can be done using the following command:

```
$impdp user_name/password directory=dir_name  
dumpfile=dmp_file_name.dmp logfile=dmp_file_name.log  
remap_schema=from_schema_name:to_schema_name  
remap_tablespace=from_tablespace_name:to_tablespace_name  
transform=OID:n
```

1.3 Creating Schema from Shipment Media

Under this method, you need to create the schema from the shipment media.

- [Backend Setup using Silent Installer](#)
Backend Setup has to be done using Silent Installer. DDL Compilation, Object Compilation and Static Data Load will be taken care as part of Backend Setup.
- [Basic Setup using GUI Installer](#)
This topic explains the systematic instructions about basic setup using the GUI installer.

1.3.1 Backend Setup using Silent Installer

Backend Setup has to be done using Silent Installer. DDL Compilation, Object Compilation and Static Data Load will be taken care as part of Backend Setup.

Backend Setup has to be done using Silent Installer. DDL Compilation, Object Compilation and Static Data Load will be taken care as part of Backend Setup.

Before loading objects into the schema, fcubs.properties file creation must be performed with the required database details using the GUI installer (Refer

OBTF_Installer_Property_File_Creation document). After the property file is created, env.properties file, present in INSTALLER/SOFT/GUI/logs/ directory, will be automatically updated, with the details provided while creating the property file.

env.properties file present in INSTALLER/SOFT/GUI/logs/ will be automatically copied to INSTALLER/SOFT/logs/ directory as part of property file creation. Details from this env.properties are taken for further steps.

Run the <**Product Processor**>DBCompileRun.bat from INSTALLER/SOFT directory. DDL Compilation, Object Compilation and Static Data load will be done.

Example 1-1 OBTF INSTALLATION

First load SMS objects first and then OBTF objects. i.e.

1. Run SMSDBCompileRun.bat in windows (SMSDBCompileRun.sh in linux). Note: Before running DB Compilation of any sort, please make sure that System Date Time format and language are provided as English, or otherwise DB Compilation might fail due to improper log names.
2. After SMS object loading is completed, then initiate OBTF compilation Run TFDDBCompileRun.bat in windows (TFDDBCompileRun.sh in linux)

Check for the Invalid Count and make sure that the Invalid count is '0'. Please run Invalid Recompilation script (fast.sql), if required. Please provide number of threads and schema name as input while running the script.

[Invalid Recompilation](#)

This is for KERNEL as well as cluster objects in DB schema.

Please run Gateway Standard XML (Gwtm_Standard_Xml.sql) script. The data in the script is necessary to execute gateway summary operations.

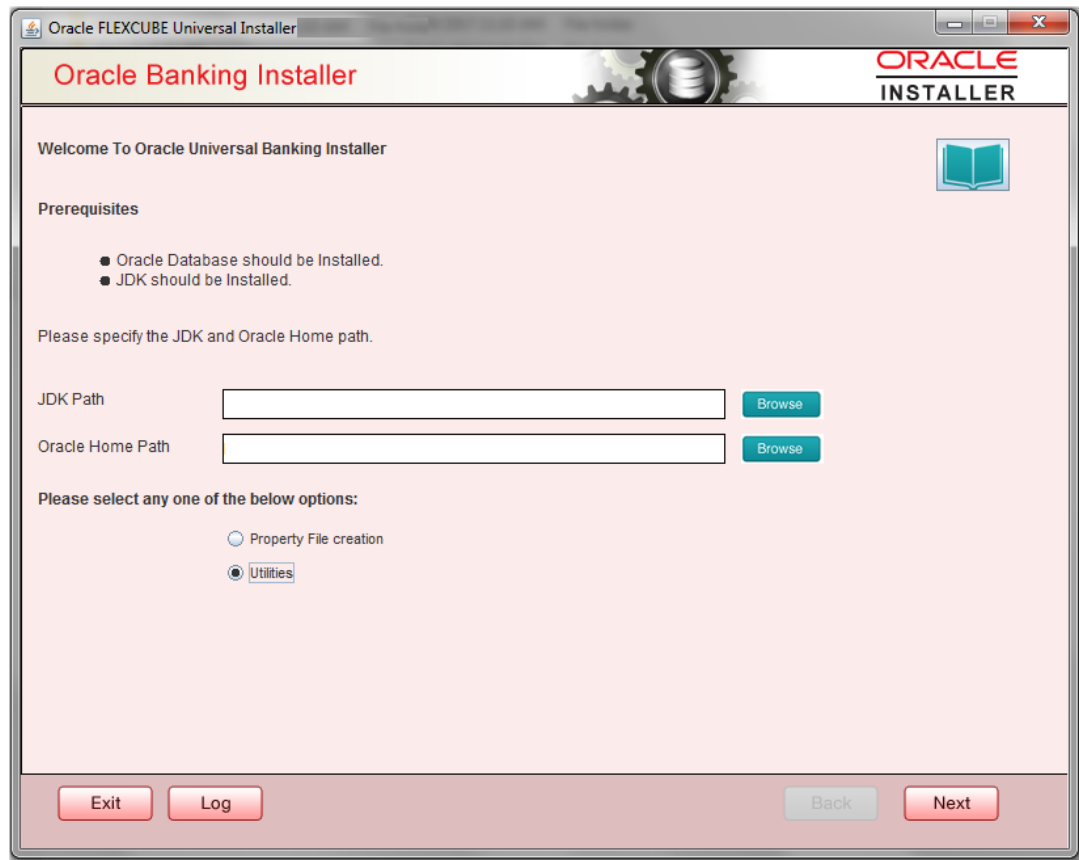
[Gwtm_Standard_Xml.sql](#)

1.3.2 Basic Setup using GUI Installer

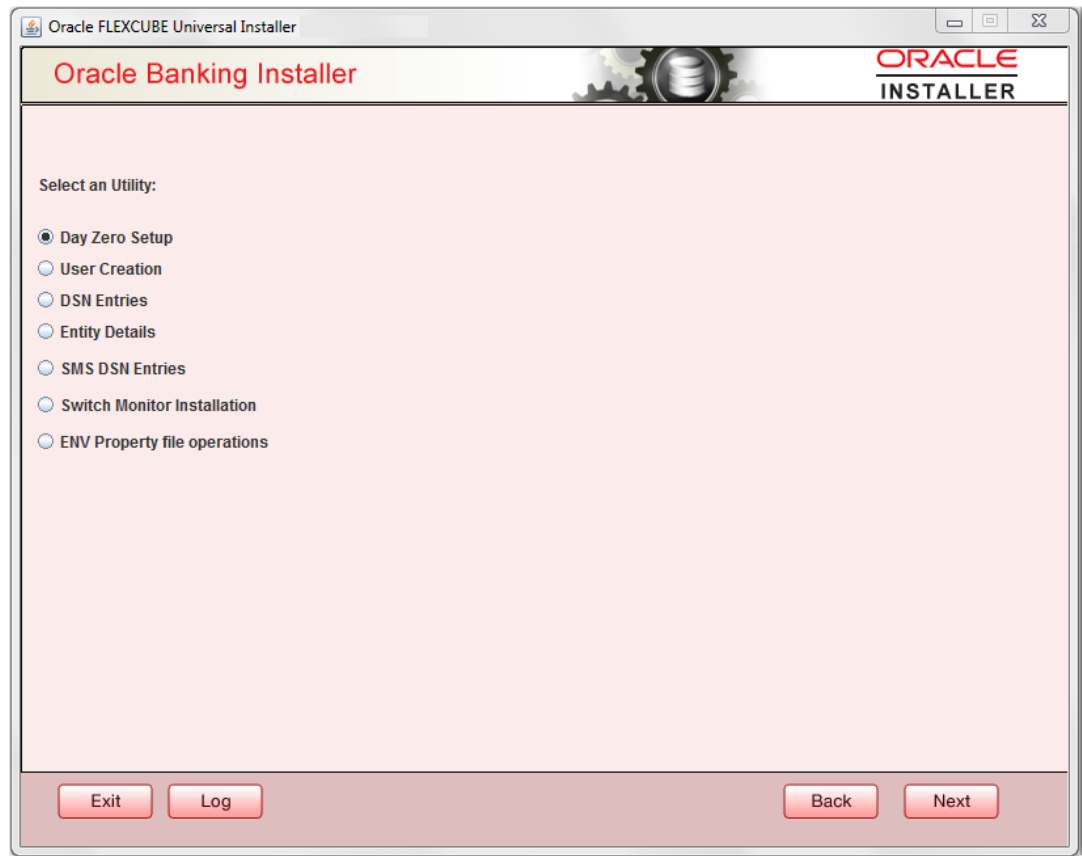
This topic explains the systematic instructions about basic setup using the GUI installer.

The steps to load objects from the shipment media are given below:

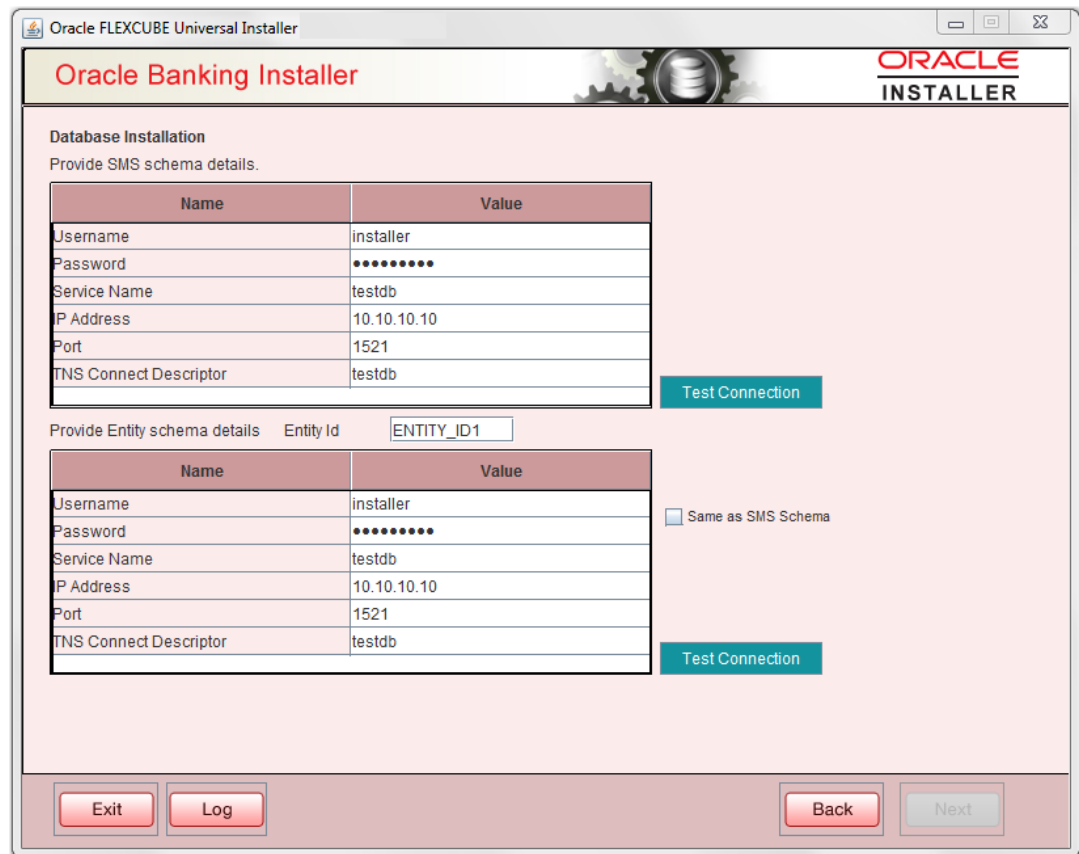
1. Double-click 'FCUBSInstaller.bat' batch file to launch Oracle Banking Trade Finance Universal Installer. The following screen is displayed. Select Utilities option and click '**Next**' button.



2. Select 'Day Zero Setup' in Utility Screen and click 'Next' as shown below:

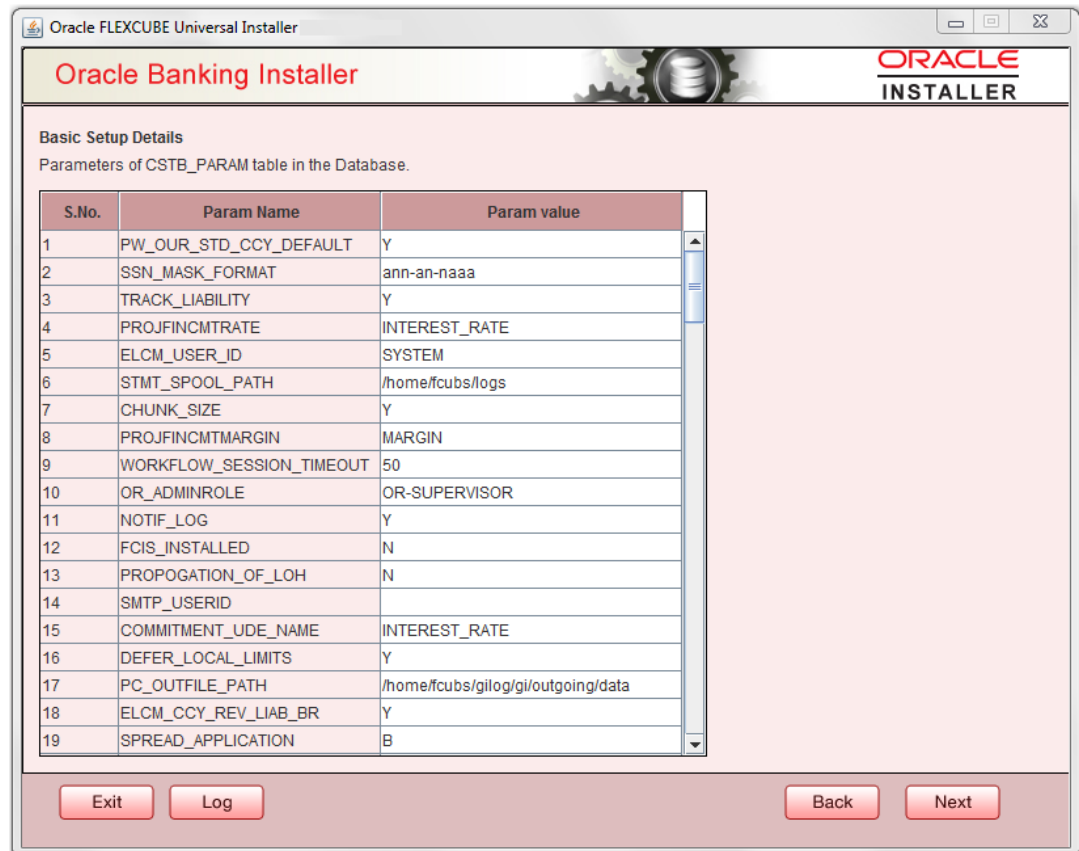


3. Click '**Next**' and in the below screen. OBTF Schema details to be entered is displayed:



Field	Description
User Name	Specify the user name to access the schema.
Password	Enter the schema password.
Service Name	Provide service name of database.
IP Address	Specify the IP address of the system where the database schema is installed. <div style="border: 1px solid #0070C0; padding: 5px; background-color: #E6F2FF;"> <p> Note: IP Address should be same as mentioned in the TNSnames.ora</p> </div>
Port	Specify the port number.
TNS Connect Descriptor	Specify the TNS Connect Descriptor. Here Entity Schema is mandatory, atleast minimum one entry should be provided. Entity Id value is default i.e. 'ENTITY_ID1' for first entry. Provide the JNDI Name for the ENTITY_ID1. By default the jndi name is 'jdbc/fcjddevDS' Give the Schema Details for the Entity1. Here Compile In All Entities Field is 'N'. (As using the Single Entity Concept).

- Click 'Next' and the following screen is displayed:



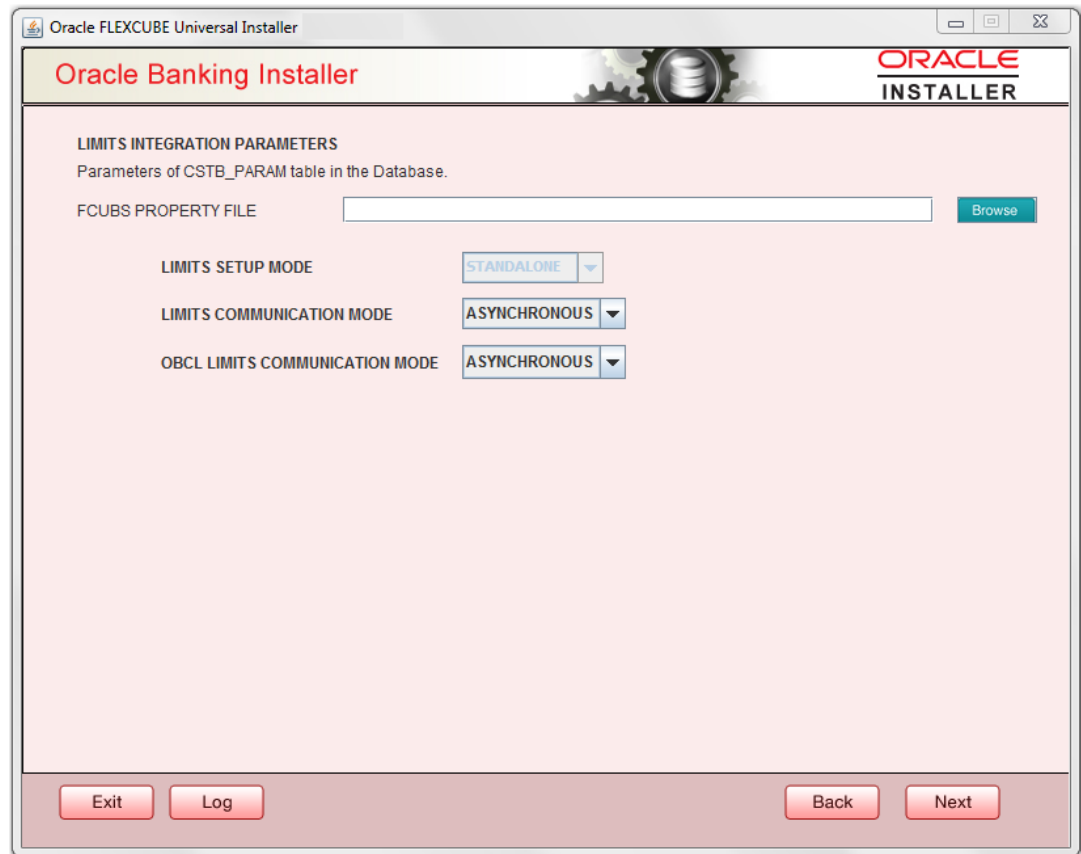
5. Screen displays basic setup details for table 'CSTB_PARAM'.

Here Oracle directory name (present in all_directories table in the schema) must be added for WORK_AREA and TRACE_AREA. Oracle directory name must be added for other required parameters also.

Oracle directory creation in the schema can be done as below :

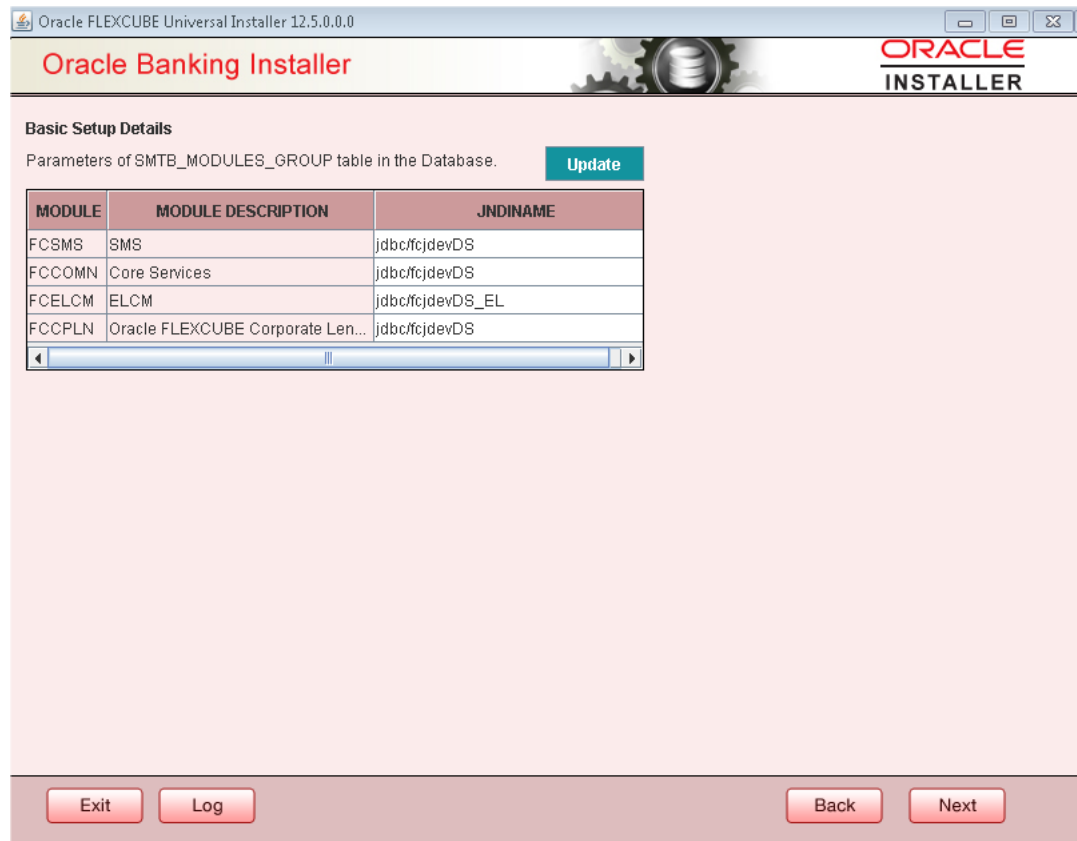
Create or replace directory dir_name as 'directory_path';

6. Click on 'Next' button to display Limits integration Parameters Screen as shown below:

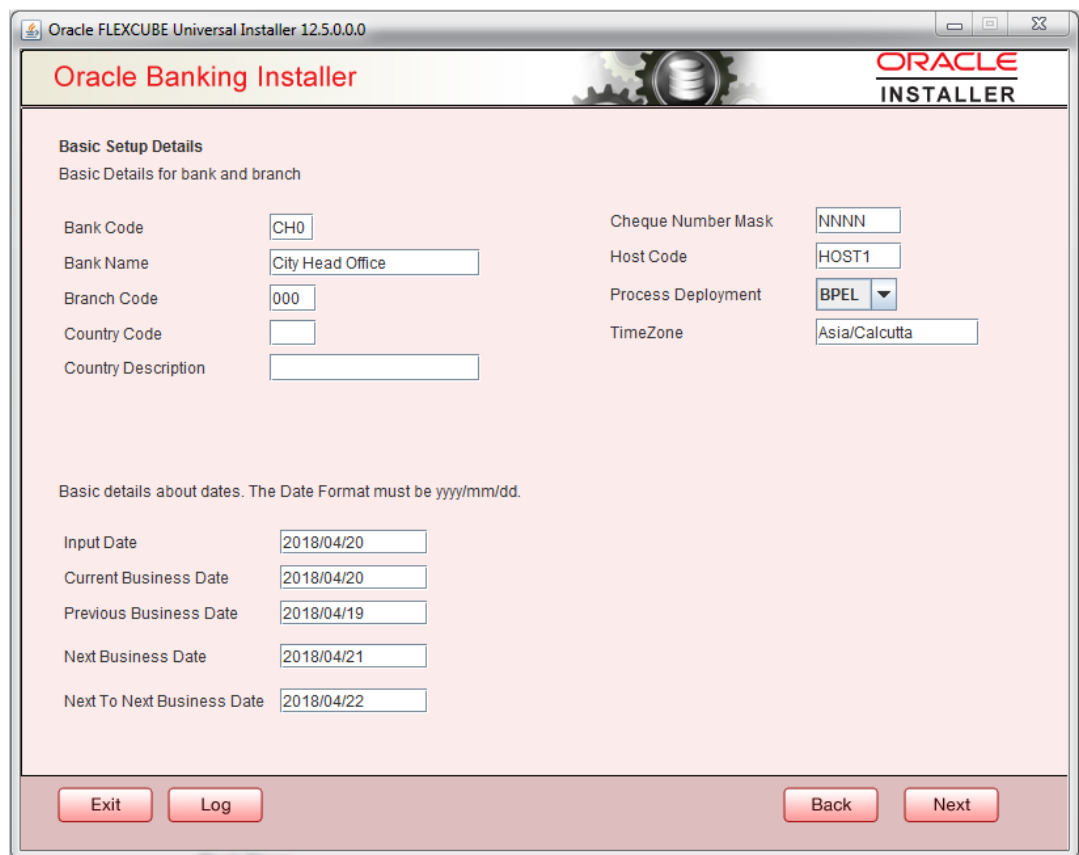


Limits Integration Parameters will be set based on values read from fcubs.properties file browsed.

7. Click on 'Next' button. Screen displays parameters for table **SMTB_MODULES_GROUP**. If any change is required in the JNDI name, edit the same and click on Update.



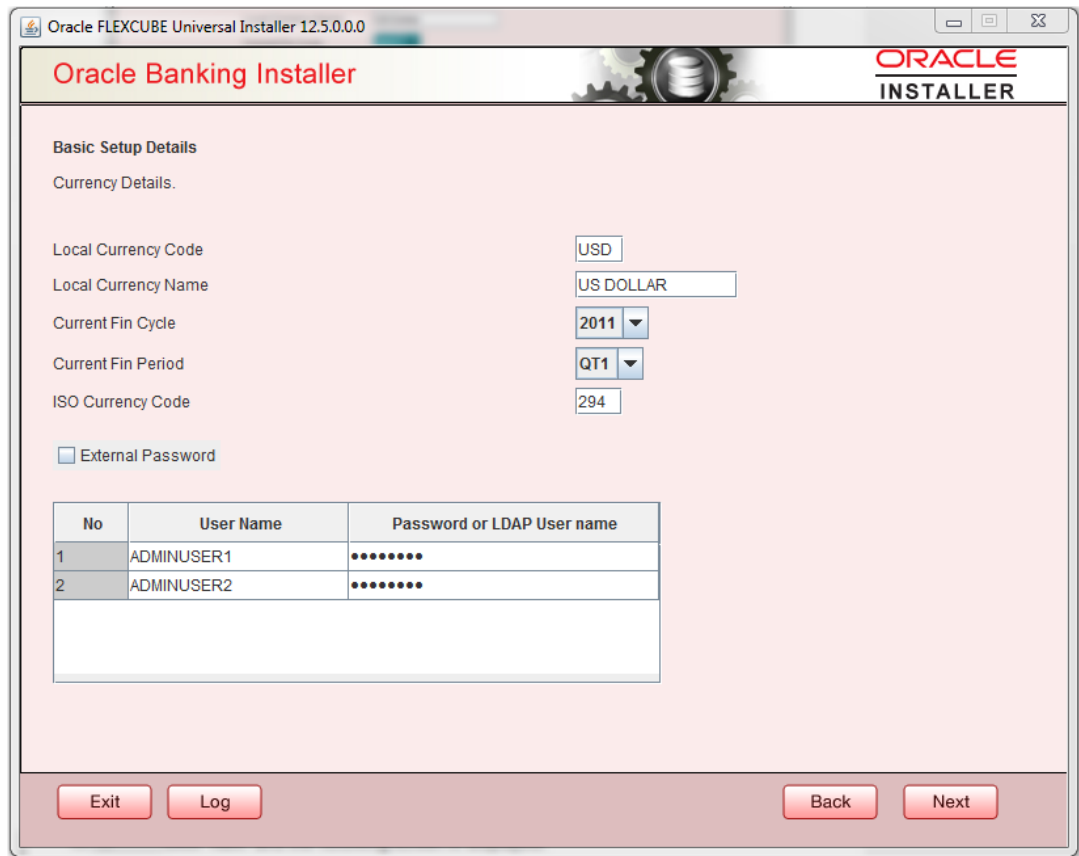
8. Click 'Next'. The following screen is displayed.



Screen displays basic setup details for bank and branch, refer the table below:


Field	Description
Bank Code	Enter the bank code.
Bank Name	Enter the bank name.
Branch Code	Enter the branch code.
Country Code	Enter the Country code.
Country Description	Enter the Country Description.
Cheque Number Mask	Enter the Cheque Number Mask.
Process Deployment	Choose mode of process deployment between BPEL or BPMN.
Screen also displays basic setup details for dates:	
Input Date	Enter the input date.
Current Business Date	Enter the current business date.
Previous Business Date	Enter the previous business date.
Next Business Date	Enter the next business date.
Next to Next Business Date	Enter the next to next business date.

- Click 'Next'. The following screen is displayed.

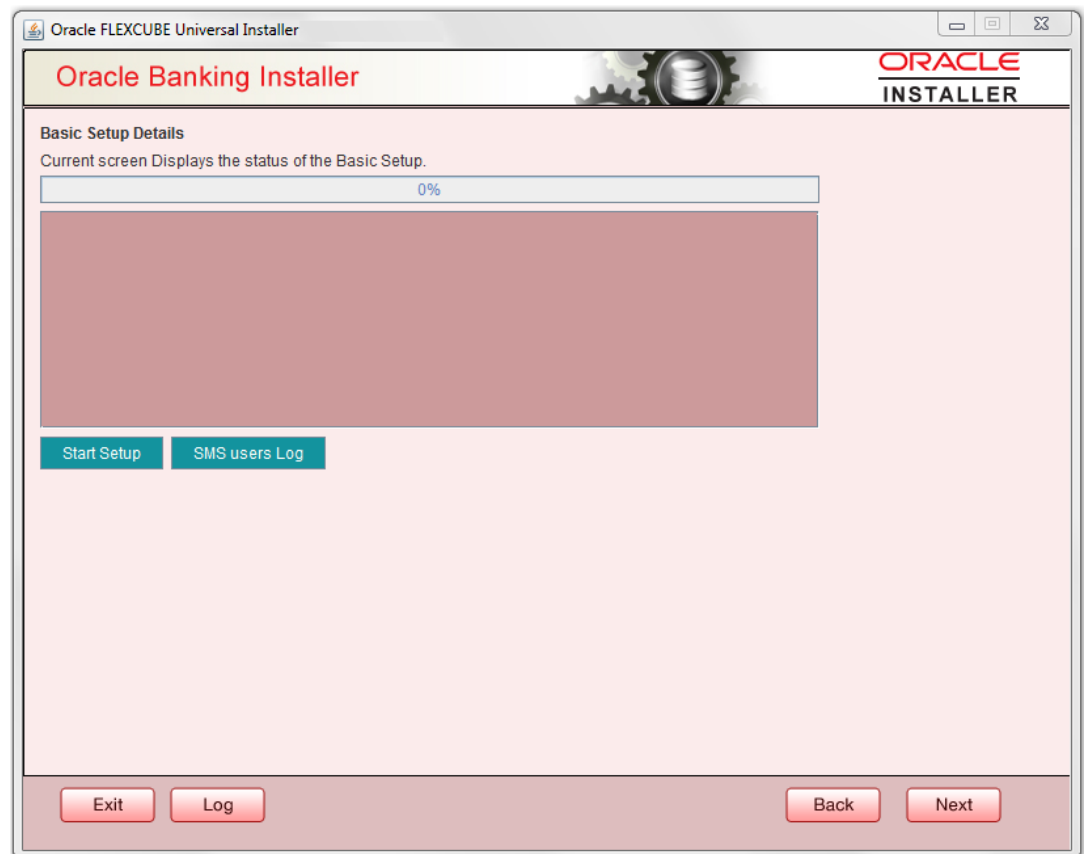


Screen displays basic setup details for currency, User can change them, refer the table below:

Field	Description
Local Currency Code	Enter Local Currency Code.
Local Currency Name	Enter Local Currency Name.
Current Fin Cycle	Enter Current Financial Cycle (any year from 2011 to 2050).
Current Fin Period	Enter Current Financial Period (QT1 to QT4,M01 to M12)
ISO Currency Code	Enter ISO Currency Code. Screen also displays basic setup details for the creating a user in Banking Trade Finance. Creation of 'SYSTEM' user is mandatory for payments processing, it needs to be created as part of static data setup.
External Password	Check this box to specify the external password.
User Name	Displays the user name. Change the user name if required.

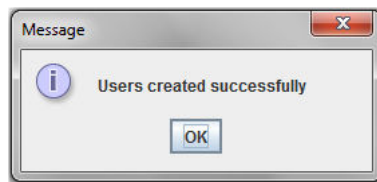
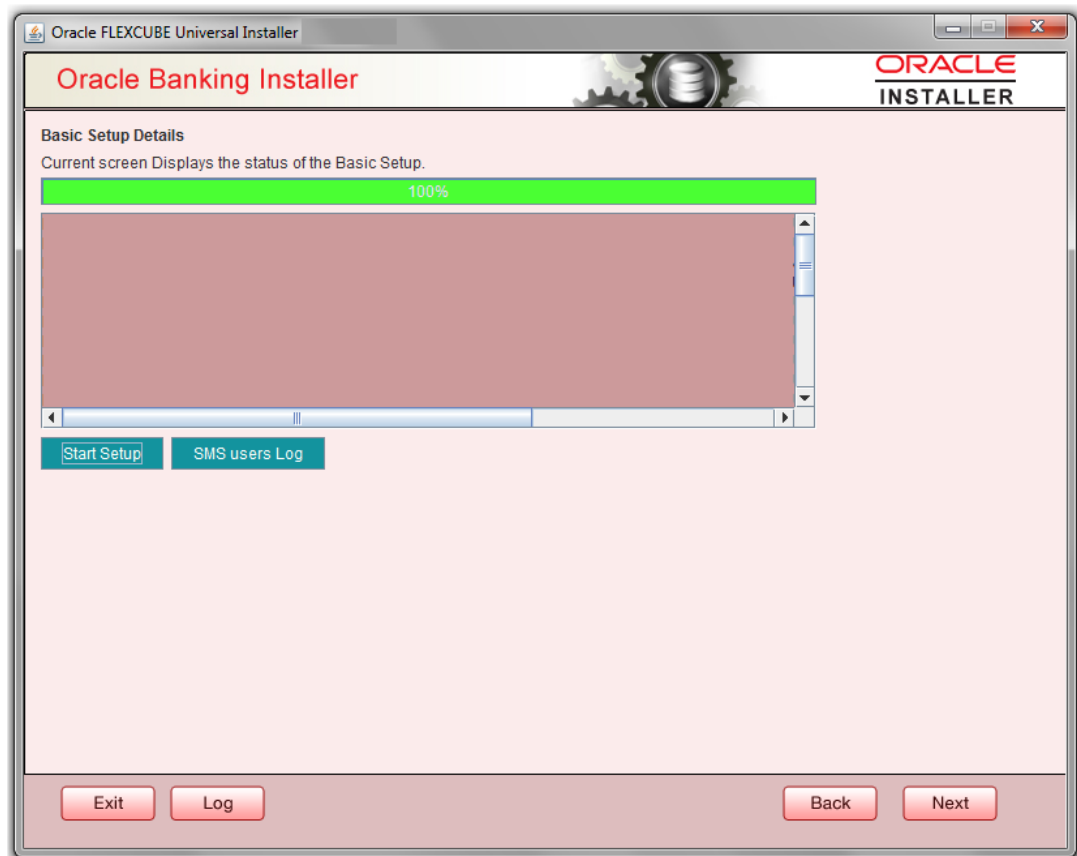
Field	Description
Password or LDAP User Name	<p>Specify the password and it is mandatory. You can use the following characters in the password:</p> <ul style="list-style-type: none">• Alphabets in uppercase• Alphabets in lowercase• Numerals  <p>You cannot use '_' (underscore) in the password.</p>

10. Click **'Next'** and the following screen is displayed:



11. Click **'Start Setup'** button to compile the entries. On completion the below Screen will be seen.

User created logs can be viewed by clicking **SMS users Log** button.



This completes the basic setup process.

Invalid Recompilation script

Purpose

Check the invalid count.

Syntax

```
EXEC UTL_RECOMP.recomp_parallel(&THREADS,'&SCHEMA');
```

Gateway Standard XML

Purpose

It is necessary to execute gateway summary operations.

Syntax

```
DECLARE
n_count NUMBER;
r_count NUMBER;
e_count NUMBER;
BEGIN
select count(*)
into n_count
from Gwtm_Standard_Xml
where xml_name = 'NO_ROUTE_CONTROL_MSG';
select count(*)
into r_count
from Gwtm_Standard_Xml
where xml_name = 'ROUTE_CONTROL_MSG';
select count(*) into e_count
from Gwtm_Standard_Xml
where xml_name = 'ERROR_MSG';
IF n_count = 0
THEN
insert into Gwtm_Standard_Xml (XML_NAME, MESSAGE)
values ('NO_ROUTE_CONTROL_MSG', '<?xml version="1.0"?>
<FCUBS_CONTROL_METADATA>
<COMM_DET>
<GATEWAY>GATEWAY</GATEWAY>
<REQ_QUEUE>REQ_QUEUE</REQ_QUEUE>
<REQ_Q_MSG_ID>REQ_Q_MSG_ID</REQ_Q_MSG_ID>
<REQ_Q_CORR_ID>REQ_Q_CORR_ID</REQ_Q_CORR_ID>
<RESP_QUEUE>RESP_QUEUE</RESP_QUEUE>
<IS_ROUTE_REQ>IS_ROUTE_REQ</IS_ROUTE_REQ>
```

```
<CONNECTION_NAME>CONNECTION_NAME</CONNECTION_NAME>
<CORRELATION_PATTERN>CORRELATION_PATTERN</CORRELATION_PATTERN>
<MSG_XCHANGE_PATTERN>MSG_XCHANGE_PATTERN</MSG_XCHANGE_PATTERN>
<MSG_ID>MSG_ID</MSG_ID> <CORREL_ID>CORREL_ID</CORREL_ID>
<GEN_REQ_MSG_REF>GEN_REQ_MSG_REF</GEN_REQ_MSG_REF>
<GEN_RESP_MSG_REF>GEN_RESP_MSG_REF</GEN_RESP_MSG_REF>
<SOURCE_USER>SOURCE_USER</SOURCE_USER>
<IS_RESP_Q_MSG_ID_REQ>IS_RESP_Q_MSG_ID_REQ</IS_RESP_Q_MSG_ID_REQ>
<RESP_Q_MSG_ID>RESP_Q_MSG_ID</RESP_Q_MSG_ID>
<RESP_Q_CORREL_ID>RESP_Q_CORREL_ID</RESP_Q_CORREL_ID>
<BRN_APP_DATE>BRN_APP_DATE</BRN_APP_DATE>
<FC_TRN_REF_NO>FC_TRN_REF_NO</FC_TRN_REF_NO>
<ERR_CODE>ERR_CODE</ERR_CODE>
<ERR_PARAM>ERR_PARAM</ERR_PARAM>
<XSD_NAME>XSD_NAME</XSD_NAME>
<XSD_VAL_REQD>XSD_VAL_REQD</XSD_VAL_REQD>
<FORMAT>FORMAT</FORMAT>
</COMM_DET>
<MSG_PROC_DET>
<UBSCOMP>UBSCOMP</UBSCOMP>
<SOURCE>SOURCE</SOURCE>
<SERVICE>SERVICE</SERVICE>
<OPERATION>OPERATION</OPERATION>
<SOURCE_OPERATION>SOURCE_OPERATION</SOURCE_OPERATION>
<USERID>USERID</USERID>
<BRANCH>BRANCH</BRANCH>
<FUNCTIONID>FUNCTIONID</FUNCTIONID>
<ACTION>ACTION</ACTION>
<MULTITRIPID>MULTITRIPID</MULTITRIPID>
</MSG_ROC_DET>
</FCUBS_CONTROL_METADATA> ');
END IF;
IF r_count = 0
THEN
```

```
insert into Gwtm_Standard_Xml (XML_NAME, MESSAGE)
values ('ROUTE_CONTROL_MSG', '<?xml version="1.0"?>
<FCUBS_CONTROL_METADATA>
<COMM_DET>
<GATEWAY>GATEWAY</GATEWAY>
<REQ_QUEUE>REQ_QUEUE</REQ_QUEUE>
<REQ_Q_MSG_ID>REQ_Q_MSG_ID</REQ_Q_MSG_ID>
<REQ_Q_CORR_ID>REQ_Q_CORR_ID</REQ_Q_CORR_ID>
<RESP_QUEUE>RESP_QUEUE</RESP_QUEUE>
<IS_ROUTE_REQ>IS_ROUTE_REQ</IS_ROUTE_REQ>
<CONNECTION_NAME>CONNECTION_NAME</CONNECTION_NAME>
<CORRELATION_PATTERN>CORRELATION_PATTERN</CORRELATION_PATTERN>
<MSG_XCHANGE_PATTERN>MSG_XCHANGE_PATTERN</MSG_XCHANGE_PATTERN>
<MSG_ID>MSG_ID</MSG_ID>
<CORREL_ID>CORREL_ID</CORREL_ID>
<GEN_REQ_MSG_REF>GEN_REQ_MSG_REF</GEN_REQ_MSG_REF>
<GEN_RESP_MSG_REF>GEN_RESP_MSG_REF</GEN_RESP_MSG_REF>
<SOURCE_USER>SOURCE_USER</SOURCE_USER>
<IS_RESP_Q_MSG_ID_REQ>IS_RESP_Q_MSG_ID_REQ</IS_RESP_Q_MSG_ID_REQ>
<RESP_Q_MSG_ID>RESP_Q_MSG_ID</RESP_Q_MSG_ID>
<RESP_Q_CORREL_ID>RESP_Q_CORREL_ID</RESP_Q_CORREL_ID>
<BRN_APP_DATE>BRN_APP_DATE</BRN_APP_DATE>
<FC_TRN_REF_NO>FC_TRN_REF_NO</FC_TRN_REF_NO>
<ERR_CODE>ERR_CODE</ERR_CODE>
<ERR_PARAM>ERR_PARAM</ERR_PARAM>
<XSD_NAME>XSD_NAME</XSD_NAME>
<XSD_VAL_REQD>XSD_VAL_REQD</XSD_VAL_REQD>
<FORMAT>FORMAT</FORMAT>
<DISTRIBUTED_INSTALLATION>DISTRIBUTED_INSTALLATION</
DISTRIBUTED_INSTALLATION>
</COMM_DET>
<MSG_PROC_DET>
<UBSCOMP>UBSCOMP</UBSCOMP>
<SOURCE>SOURCE</SOURCE>
<SERVICE>SERVICE</SERVICE>
```

```

<OPERATION>OPERATION</OPERATION>
<SOURCE_OPERATION>SOURCE_OPERATION</SOURCE_OPERATION>
<USERID>USERID</USERID>
<BRANCH>BRANCH</BRANCH>
<FUNCTIONID>FUNCTIONID</FUNCTIONID>
<ACTION>ACTION</ACTION>
<MULTITRIPID>MULTITRIPID</MULTITRIPID>
</MSG_PROC_DET>
</FCUBS_CONTROL_METADATA> ');
END IF;
IF e_count = 0
THEN
insert into Gwtm_Standard_Xml (XML_NAME, MESSAGE)
values ('ERROR_MSG', '<?xml version="1.0"?>
<FCUBS_RES_ENV>
<FCUBS_HEADER>
<SOURCE>SOURCE</SOURCE>
<UBSCOMP>UBSCOMP</UBSCOMP>
<MSGID>MSGID</MSGID>
<CORRELID>CORRELID</CORRELID>
<USERID>USERID</USERID>
<BRANCH>BRANCH</BRANCH>
<MODULEID>MODULEID</MODULEID>
<SERVICE>SERVICE</SERVICE>
<OPERATION>OPERATION</OPERATION>
<SOURCE_OPERATION>SOURCE_OPERATION</SOURCE_OPERATION>
<SOURCE_USERID>SOURCE_USERID</SOURCE_USERID>
<DESTINATION>DESTINATION</DESTINATION>
<MSGSTAT>FAILURE</MSGSTAT>
</FCUBS_HEADER>
<FCUBS_BODY>
<FCUBS_ERROR_RESP>
<ERROR> <ECODE>ECODE</ECODE>
<EDESC>EDESC</EDESC>

```

```
</ERROR>
</FCUBS_ERROR_RESP>
</FCUBS_BODY>
</FCUBS_RES_ENV> ');
END IF;
END;
/
COMMIT;
/
```