

# Oracle Banking Trade Finance

## Standalone Scheduler Property File Creation



Release 14.7.4.0.0  
F99207-01  
June 2024



Oracle Banking Trade Finance Standalone Scheduler Property File Creation, Release 14.7.4.0.0

F99207-01

Copyright © 2007, 2024, Oracle and/or its affiliates.

Primary Authors: (primary author), (primary author)

Contributing Authors: (contributing author), (contributing author)

Contributors: (contributor), (contributor)

This software and related documentation are provided under a license agreement containing restrictions on use and disclosure and are protected by intellectual property laws. Except as expressly permitted in your license agreement or allowed by law, you may not use, copy, reproduce, translate, broadcast, modify, license, transmit, distribute, exhibit, perform, publish, or display any part, in any form, or by any means. Reverse engineering, disassembly, or decompilation of this software, unless required by law for interoperability, is prohibited.

The information contained herein is subject to change without notice and is not warranted to be error-free. If you find any errors, please report them to us in writing.

If this is software, software documentation, data (as defined in the Federal Acquisition Regulation), or related documentation that is delivered to the U.S. Government or anyone licensing it on behalf of the U.S. Government, then the following notice is applicable:

U.S. GOVERNMENT END USERS: Oracle programs (including any operating system, integrated software, any programs embedded, installed, or activated on delivered hardware, and modifications of such programs) and Oracle computer documentation or other Oracle data delivered to or accessed by U.S. Government end users are "commercial computer software," "commercial computer software documentation," or "limited rights data" pursuant to the applicable Federal Acquisition Regulation and agency-specific supplemental regulations. As such, the use, reproduction, duplication, release, display, disclosure, modification, preparation of derivative works, and/or adaptation of i) Oracle programs (including any operating system, integrated software, any programs embedded, installed, or activated on delivered hardware, and modifications of such programs), ii) Oracle computer documentation and/or iii) other Oracle data, is subject to the rights and limitations specified in the license contained in the applicable contract. The terms governing the U.S. Government's use of Oracle cloud services are defined by the applicable contract for such services. No other rights are granted to the U.S. Government.

This software or hardware is developed for general use in a variety of information management applications. It is not developed or intended for use in any inherently dangerous applications, including applications that may create a risk of personal injury. If you use this software or hardware in dangerous applications, then you shall be responsible to take all appropriate fail-safe, backup, redundancy, and other measures to ensure its safe use. Oracle Corporation and its affiliates disclaim any liability for any damages caused by use of this software or hardware in dangerous applications.

Oracle®, Java, MySQL, and NetSuite are registered trademarks of Oracle and/or its affiliates. Other names may be trademarks of their respective owners.

Intel and Intel Inside are trademarks or registered trademarks of Intel Corporation. All SPARC trademarks are used under license and are trademarks or registered trademarks of SPARC International, Inc. AMD, Epyc, and the AMD logo are trademarks or registered trademarks of Advanced Micro Devices. UNIX is a registered trademark of The Open Group.

This software or hardware and documentation may provide access to or information about content, products, and services from third parties. Oracle Corporation and its affiliates are not responsible for and expressly disclaim all warranties of any kind with respect to third-party content, products, and services unless otherwise set forth in an applicable agreement between you and Oracle. Oracle Corporation and its affiliates will not be responsible for any loss, costs, or damages incurred due to your access to or use of third-party content, products, or services, except as set forth in an applicable agreement between you and Oracle.

# Contents

## 1 Creating Property File for Standalone scheduler

---

1.1	Introduction	1-1
1.2	Creating Property File	1-1
1.2.1	Setting General Properties	1-5
1.2.2	Single Sign on	1-7
1.2.3	SMTPS Details	1-8
1.2.4	Configuring Scheduler Queues	1-8
1.2.5	Setting EMS FTP/FTPS Properties	1-12
1.2.6	Setting BIP/GI Upload Queue	1-14
1.2.7	Setting Report Properties	1-15
1.2.8	Saving Property File	1-17

# 1

## Creating Property File for Standalone scheduler

- [Introduction](#)
- [Creating Property File](#)

### 1.1 Introduction

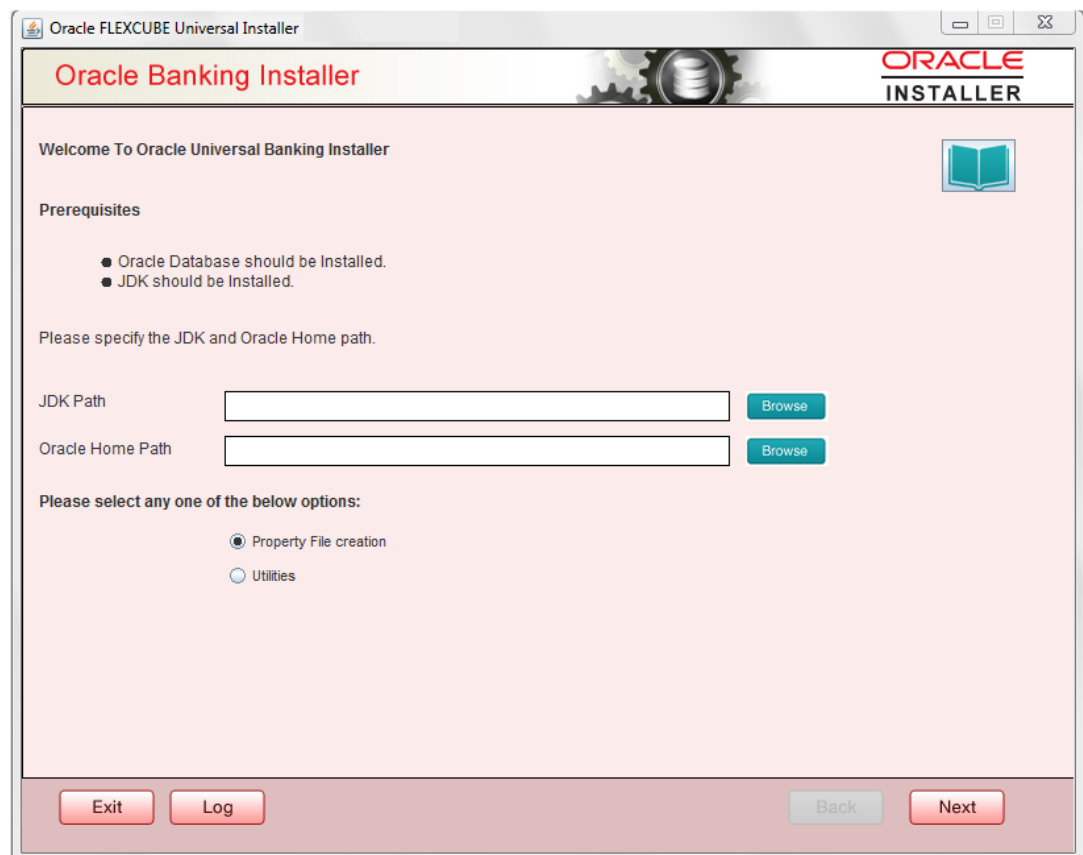
This chapter explains the steps to create property file for Standalone Scheduler.

### 1.2 Creating Property File

To create the property file for Oracle Banking Trade Finance Standalone Scheduler, follow the steps given below:

(Optional) Enter task prerequisites here.

1. Launch Oracle Banking Trade Finance Universal Banking Solution Installer. Select **'Property File Creation'** option and Click **'Next'** button.



2. Select '**Scheduler**' component and Oracle Banking Trade Finance for Trade Finance Property file creation.

In case of co-deployment one or more Product Processors can be included with Trade Finance.

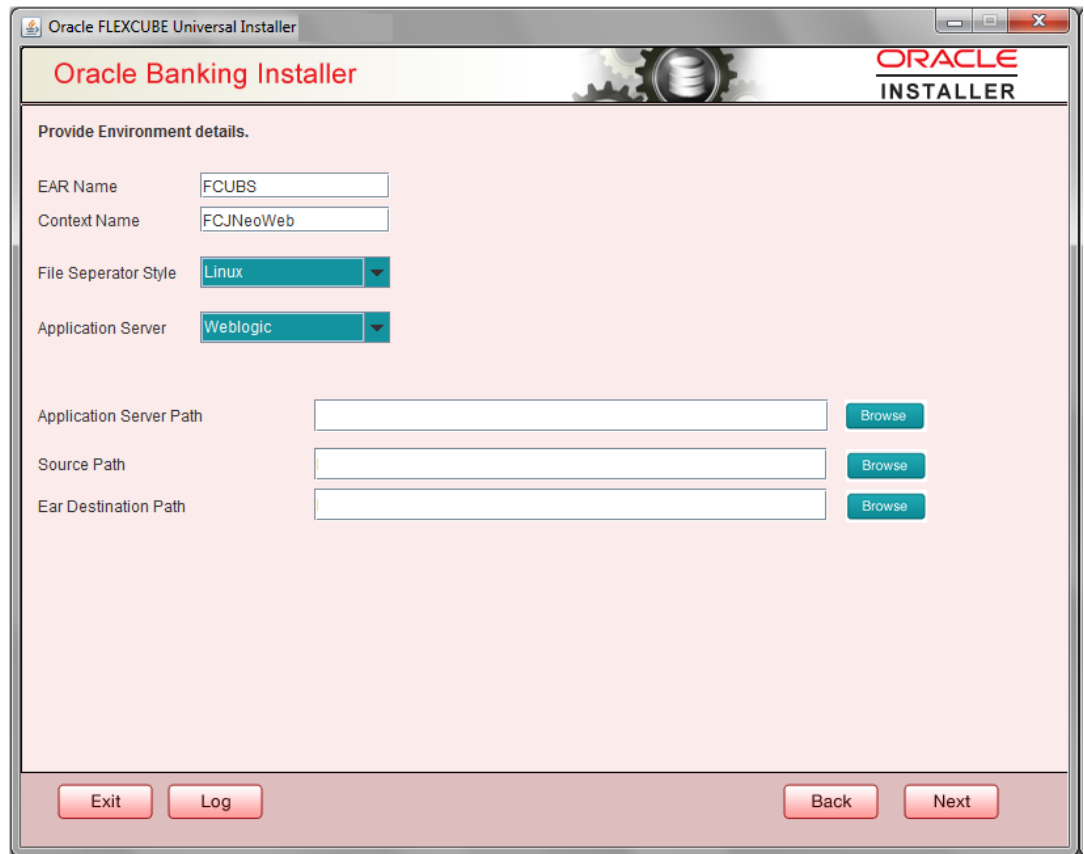
- a. Oracle Financial Universal Banking product processor contains Rest of FLEXCUBE other than Payments, ELCM and OBCL etc.
- b. Oracle FLEXCUBE Enterprise Limits and Collateral Management (ELCM) has three types .They are Embedded, CO-Deploy and Standalone (ELCM Adapter). Please choose proper option. Oracle FLEXCUBE Enterprise Limits and Collateral Managements can be selected as individual application or along with Oracle Financial Universal Banking. Also ELCM Adapter required checkbox is available.
- c. Oracle Banking payments can be selected.
- d. Oracle Banking Corporate Lending can be selected.
- e. Open Development Tool (ODT) can be selected to install ODT, that allows end user to design ODT screens.
- f. Oracle Banking Treasury can be selected.

The screenshot shows the Oracle Banking Installer window. The title bar reads 'Oracle FLEXCUBE Universal Installer 12.5.0.0.0'. The main window has a header with 'Oracle Banking Installer' and the Oracle logo. Below the header, there are three sections:

- Select one of the Components:** Includes a text field for 'Load Existing Property File' with a 'Browse' button. Below are radio buttons for 'INFRA', 'Scheduler' (selected), 'Gateway', and 'Switch Interface Installation'.
- Select Oracle Product Processors:** Includes checkboxes for 'Oracle FLEXCUBE Universal Banking', 'Oracle FLEXCUBE Enterprise Limits and Collateral Management (CO-DEPLOY)', 'Oracle Banking Payments', 'Oracle Banking Corporate Lending', 'Open Development Tool', 'Oracle Banking Treasury', and 'Oracle Banking Trade Finance' (checked).
- Select Plugins to be Installed:** Includes a 'Branch' dropdown set to 'Centralized', a 'Load Existing Branch Property File' field with a 'Browse' button, and several checkboxes: 'BPEL', 'Scheduler', 'Reports', 'OFTW', 'FGL', 'SIANET Adapter', 'DMS', 'Insulation', and 'ELCM Adapter required' (checked). There are also IP address and port fields for Host Address, Reports, and DMS.

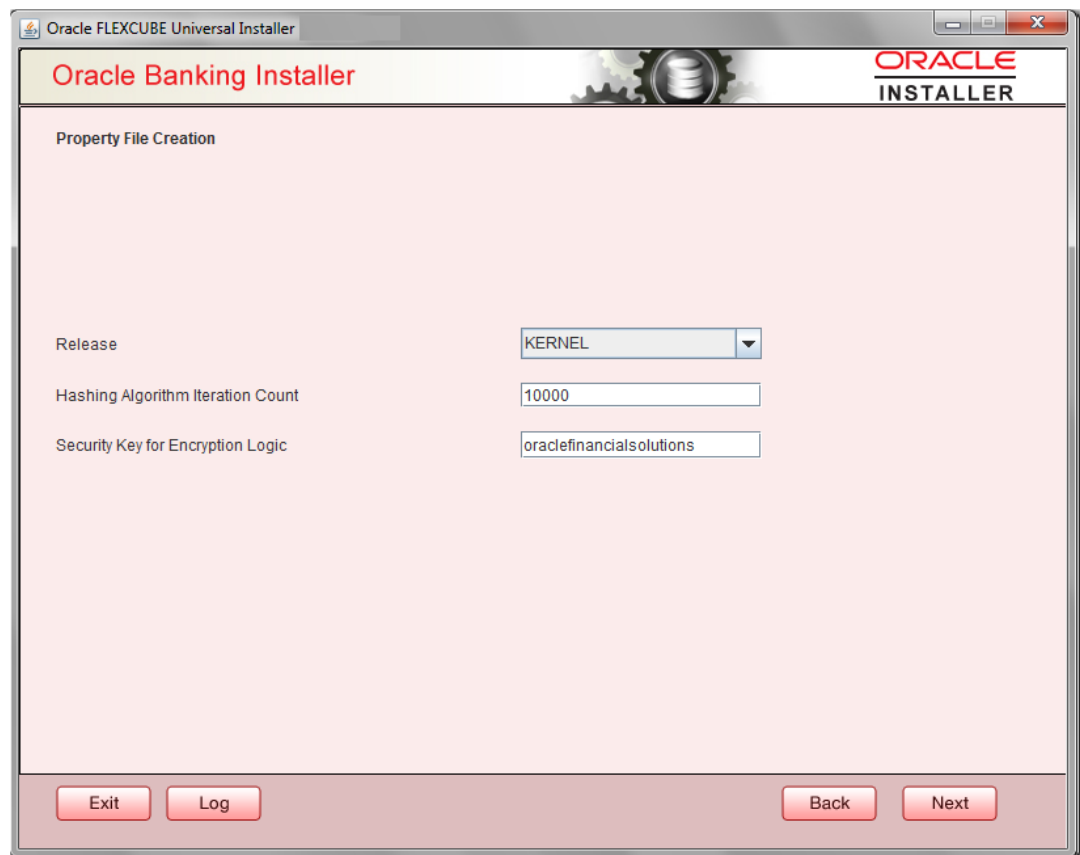
At the bottom, there are buttons for 'Exit', 'Log', 'Back', and 'Next'.

3. The below Screen accepts EAR name, Context Name, Application Server Path, Source Path and EAR Destination path. Enter the valid data and select File Separator Style and application server from drop down.

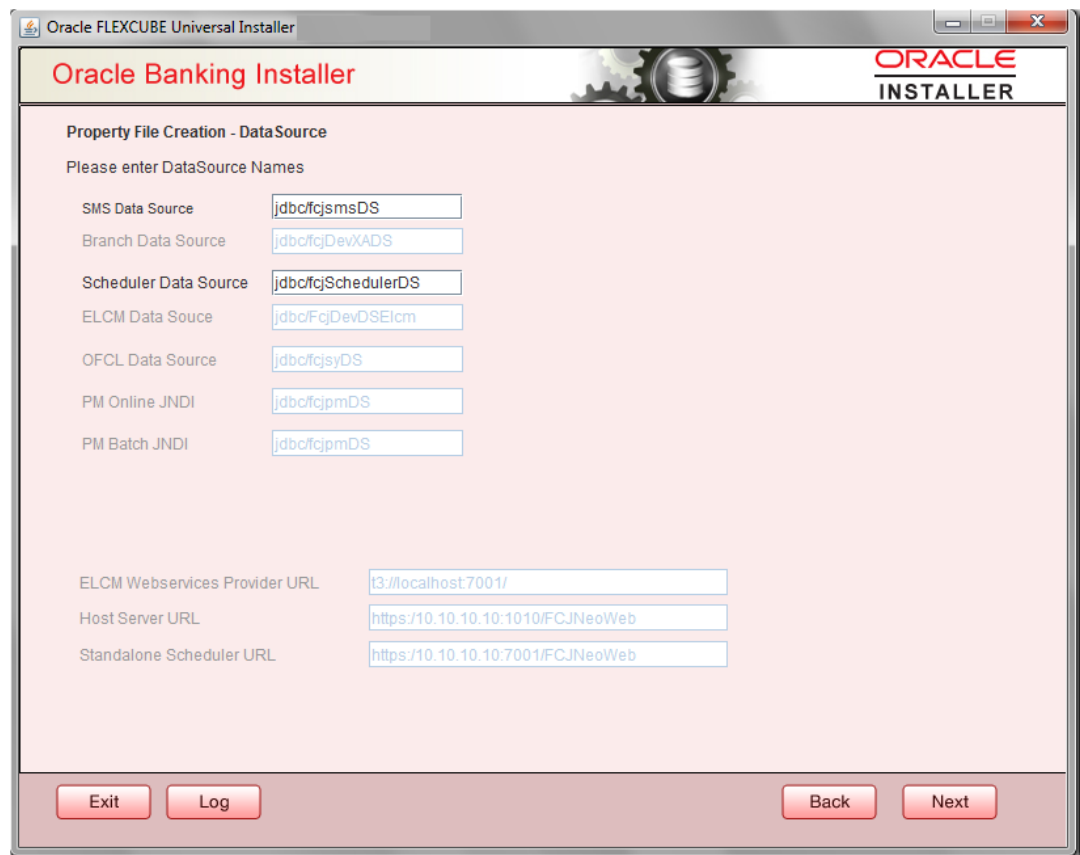


4. Click on **'Next'** button to navigate to below Screen.
5. Below shown Screen contains:

Field	Description
<b>Release</b>	Select the release from the adjoining drop down list.
<b>Hashing Algorithm Iteration Count</b>	It should be entered, which will be used for encryption.
<b>Security key for encryption logic</b>	



6. Click on **Next** button to proceed to DataSource Screen.
7. Enter JNDI value for the Datasources enabled and click on **Next** button.



- [Setting General Properties](#)  
This section describes the process of setting common properties of Standalone Installer.
- [Single Sign on](#)  
This topic explains the systematic instructions of setting single sign on.
- [SMTPS Details](#)
- [Configuring Scheduler Queues](#)  
This topic explains the systematic instructions to configure scheduler data source
- [Setting EMS FTP/FTPS Properties](#)  
This topic explains the EMS FTP/FTPS properties.
- [Setting BIP/GI Upload Queue](#)  
This screen describes how to create the property file. Here, you need to set the BIP and BIP Advice report details.
- [Setting Report Properties](#)  
This section describes the methods to set report properties.
- [Saving Property File](#)  
This topic explains to save the property file.

## 1.2.1 Setting General Properties

This section describes the process of setting common properties of Standalone Installer.

- The installer displays the '**General Properties**' screen.



The screenshot shows the 'Oracle Banking Installer' window with the 'Property File Creation - General Property' tab selected. The fields are as follows:

- Debug Logs Required: No (dropdown),  LOV Fetch Required
- Work Area: /BrnDbgs/
- Signature Path: /BrnDbgs/
- Excel Path: /BrnDbgs/
- Request Time Out: 1800000 In milli seconds
- Connection Time Out: 3600 In Seconds
- Session Time Out: 1800 In Seconds
- Max Image Size: 1048576 In Bytes
- User Batch Time: 0 In Hours
- Css Style: Default (dropdown)
- Name: Flexblue
- Language: ENGLISH (dropdown)
- ISO Code: en
- Application Title: FLEXCUBE UBS
- Version: 12.5.0.0.0
- CopyRights: Copyright © 2017, Oracle and/or its affiliates. All rights reserved.

Buttons at the bottom: Exit, Log, Back, Next.

Specify the following details, refer the table below:

Field	Description
<b>Debug Logs Required</b>	If you require debug option, select 'Yes' from the drop-down list. If you do not require debug option, select 'No'.
<b>Work Area</b>	Specify the work area. For example: D:\BrnDbgs\
<b>Signature Path</b>	Specify the location at which the signature images are placed.
<b>Excel Path</b>	Specify the location at which the excel files are generated.
<b>Request Time Out</b>	Specify the database request timeout value in milli seconds. This is the maximum number of seconds the database waits for a query to return the result.
<b>Connection Time Out</b>	Specify the database connection timeout value in seconds. This is the maximum number of seconds the application waits for a connection to the database to open.
<b>Session Time Out</b>	Enter the session time out value in seconds. This is the maximum number of seconds during which the application gets active without any user intervention. If there is no user intervention continuously for the duration specified here, the user session gets expire.

Field	Description
<b>LOV Fetch Required</b>	If you check this box, the option lists in Oracle Banking Trade Finance displays the matching values based on the first characters that you enter in a field. If you specify the first three characters of a value to be entered in an option list and tab out, the system displays the complete list of values that are matching the first three characters.  If you do not check this, option lists does not show the matching values based on the first few characters. You need to specify the complete value against the field.
<b>CSS style</b>	Select Default or Custom from drop-down. By Default CSS Style name will be 'flexblue'.
<b>Language</b>	Select language from the drop-down. Version and Copyright are other general properties. Click on <b>Next</b> button, once all the property details are entered.

## 1.2.2 Single Sign on

This topic explains the systematic instructions of setting single sign on.

1. The installer displays the **Single Sign on** screen. Only 'OPSS Available' option will be enabled for Scheduler. Select the option if needed.

Oracle FLEXCUBE Universal Installer

**Oracle Banking Installer** **ORACLE**  
INSTALLER

Property File Creation - Single Sign on

SSO Required  SSO Type: **DEFAULT** (dropdown)

SSO KEY: **DN** (text field)

Authentication details maintained external to FLEXCUBE

External Password Required  Authentication Type: **MSAD** (dropdown)

External User Login Required

OPSS Available

Option to provide LDAP server details

No.	Name	Value
1	LDAP SERVER URL	LDAP://10.10.10.10:111
2	LDAP SSL ENABLED	<input type="checkbox"/>
3	SECURITY AUTHENTICATION TYPE	Simple
4	DOMAIN NAME	I-FLEX.COM
5	LDAP SERVER TIMEOUT	0

Option to provide SAML details

No.	Name	Value
1	SAML CERTIFICATE PATH	D:\Security\SAML_Implementation\TestFiles\certcertstore\b...
2	SAML CERTIFICATE PASSWORD	*****
3	SAML CERTIFICATE ALIAS	barc
4	SAML VALID AUDIENCE	bPAID_BWSIT

Buttons: Exit, Log, Back, Next

## 1.2.3 SMTPS Details

SMTPS mail configuration is enabled for Scheduler.

1. Click the **Next** button and the following screen is displayed. **Oracle Banking Installer - Property File Creation - SMTPS/Branch/DMS** screen is displayed.

**Figure 1-1 Oracle Banking Installer - Property File Creation - SMTPS/Branch/DMS**

2. On the **Oracle Banking Installer - Property File Creation - SMTPS/Branch/DMS** screen, specify the fields. For more information, refer the field description table.

Field	Description
<b>Host</b>	Specify the SMTP host name.
<b>User ID</b>	Specify the user ID.
<b>User Password</b>	Specify the user password.
<b>JNDI Name</b>	Specify the JNDI name.

3. Once you have specified the above details, click the **Next** button.

## 1.2.4 Configuring Scheduler Queues

This topic explains the systematic instructions to configure scheduler data source

1. The system displays the following screen: **Oracle Banking Installer - Property File Creation - Scheduler Queues** screen is displayed.

**Oracle FLEXCUBE Universal Installer**

**Oracle Banking Installer**

**Property File Creation - Scheduler Queues**

Option for configuring Scheduler Destination Queue

Notify Destination: **QUEUE**

Queue Name: **NOTIFY\_DEST\_QUEUE**

Queue Connection Factory: **NotifyDestQCF**

Secure Caller ID:

Caller Password:

Notify Queue Location: **Internal**

Option for configuring Scheduler Deferred Queue

Notify Deffered Queue Name: **DEFFERED\_DEST\_QUEUE**

Deffered Queue Connection Factory: **DefferedDestQCF**

Secure Caller ID:

Caller Password:

Option for configuring Scheduler Notify Internal Queue

Notify Queue Name: **NOTIFY\_QUEUE**

Dead Letter Queue Name: **NOTIFY\_QUEUE\_DLQ**

Notify Queue Connection Factory: **NOTIFY\_MDB\_QCF**

Secure Caller ID:

Caller Password:

Option for configuring Log Rotation Interval

Scheduler Log Rotation Interval: **WEEKLY**

Option for External Server configuration for Destination Queue.



No.	Name	Value
1	Provider URL	iiop://localhost:1010
2	Security Principal	*****
3	Security Credential	*****

Buttons: Exit, Log, Back, Next

- On the **Oracle FLEXCUBE Universal Installer - Property File Creation - Scheduler Queues** screen, specify the fields.

For more information, refer the field description table.

Field	Description
<b>Notify Destination</b>	Specify the notify destination. Select one of the following options: <ul style="list-style-type: none"> <li>• QUEUE</li> <li>• TOPIC</li> </ul>
<b>Queue Name</b>	Set ' <b>NOTIFY_DEST_QUEUE</b> ' as the destination queue name.
<b>Queue Connection Factory</b>	Set ' <b>NotifyDestQCF</b> ' as the queue connection factory.
<b>Secure</b>	Check this box to indicate that it is a secured queue connection factory. If you check this box, the caller ID and caller password will be enabled.
<b>Caller ID</b>	Specify the caller ID for the secured queue connection factory.

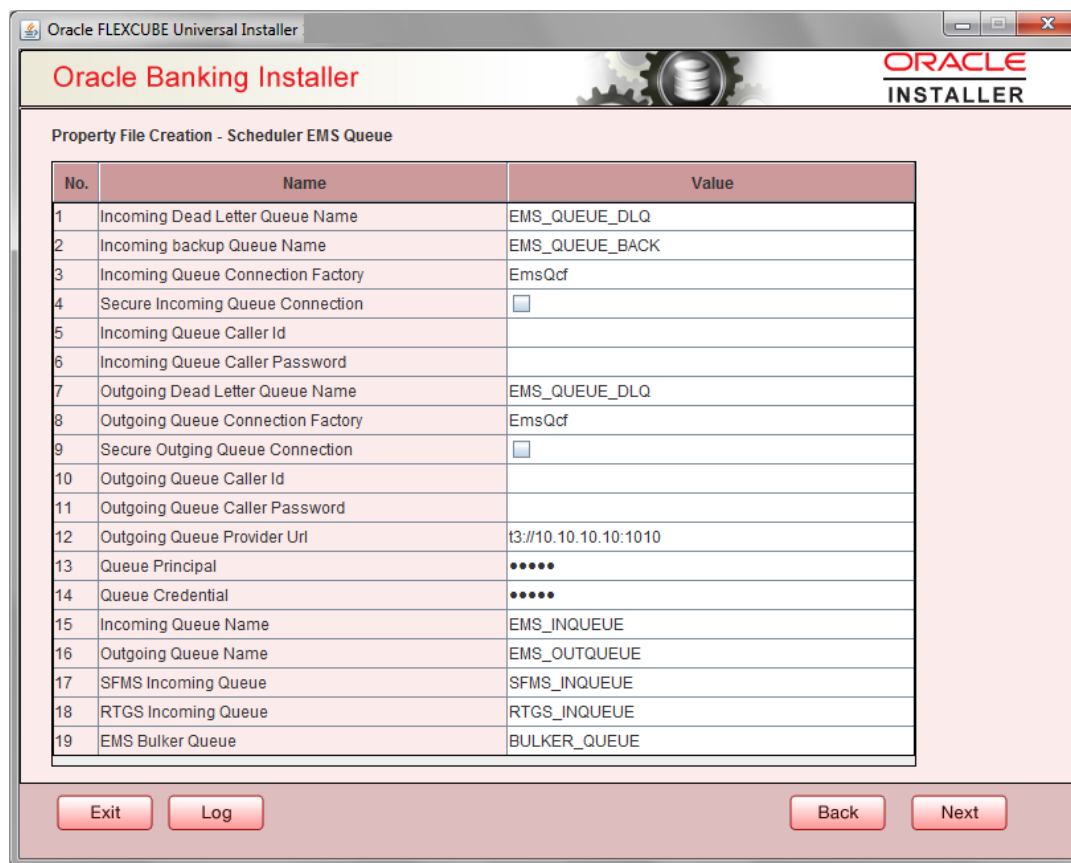
Field	Description
<b>Caller Password</b>	<p>Specify the password for the caller ID to access the secured queue connection factory.</p>  <p>If the queue connection factory is not secured, i.e., if you have not checked the box 'Secure', the installer will not display the fields 'Caller ID' and 'Caller Password'. You need not provide these details in that case.</p>
<b>Notify Queue Location</b>	<p>Specify the notify queue location. Select one of the following options:</p> <ul style="list-style-type: none"> <li>• Internal</li> <li>• External</li> </ul>  <p>For Oracle WebLogic application server, the notify queue location should be selected as 'Internal'.</p> <p>If you choose '<b>External</b>' following details for the external queue will be enabled.</p>
<b>Provider URL</b>	<p>Specify the provide URL. (<code>iiop://localhost:1010</code>) 1010 is the default IIOp port.</p>

Application Server	EMS Out Initial Context Factory
Oracle WebLogic	<p>t3://&lt;ip_adress&gt;:port For example: t3://10.10.10.10:1010 Here, 10.10.10.10 represents the local host and 1010 to the target server default port (AdminServer/ManagedServer).</p>
IBM WebSphere	<p>iiop://&lt;ip_adress&gt;:port For example: iiop://10.10.10.10:1010 Here, 1010 represents the default iiop port</p>

<b>Security Principal</b>	Specify the login ID to access the application server.
<b>Security Credentials</b>	Specify the password to access the application server. Click ' <b>Next</b> ' to proceed with scheduler configuration.
<b>Notify Deferred Queue Name</b>	Set ' <b>DEFERRED_DEST_QUEUE</b> ' as the notify differed queue name.
<b>Deferred Queue Connection Factory</b>	Set ' <b>DeferredDestQcf</b> ' as the deferred queue connection factory.
<b>Secure</b>	<p>Check this box to indicate that it is a secured deferred queue connection factory. If you check this box, caller ID and caller password will be enabled.</p> <p>Specify the caller ID and caller password for the secured deferred queue connection factory.</p>
<b>Notify Queue Name</b>	Set ' <b>NOTIFY_QUEUE</b> ' as the notify queue name.
<b>Dead Letter Queue Name</b>	Set ' <b>NOTIFY_QUEUE_DLQ</b> ' as the dead letter queue name.

<b>Notify Queue Connection Factory</b>	Set <b>'NOTIFY_MDB_QCF'</b> as the notify queue connection factory.
<b>Secure</b>	Check this box to indicate that it is a secured notify internal Queue. If you check this box, caller ID and caller password will be enabled. Specify the caller ID and caller password for the secured notify queue connection factory.

3. Click **'Next'** and the following screen is displayed:



Specify the following details, refer the table below:

Field	Description
<b>Incoming Dead Letter Queue Name</b>	Set <b>'EMS_QUEUE_DLQ'</b> as the incoming dead letter queue name.
<b>Incoming Backup Queue Name</b>	Set <b>'EMS_QUEUE_BACK'</b> as the incoming backup queue name.
<b>Incoming Queue Connection Factory</b>	Set <b>'EmsQcf'</b> as the incoming queue connection factory.
<b>Secure Incoming Queue Connection</b>	Check this box to indicate that it is a secured queue connection.
<b>Incoming Queue Caller ID</b>	Specify the caller ID for the secured queue connection.
<b>Incoming Queue Caller Password</b>	Specify the caller password for the secured queue connection.
<b>Outgoing Dead Letter Queue Name</b>	Set <b>'EMS_QUEUE_DLQ'</b> as outgoing dead letter queue name.
<b>Outgoing Queue Connection Factory</b>	Set <b>'EmsQcf'</b> as the outgoing queue connection factory.

Field	Description
<b>Secure Outgoing Queue Connection</b>	Check this box to indicate that it is a secured outgoing queue connection.
<b>Outgoing Queue Caller ID</b>	Specify the caller ID for the secured queue connection.
<b>Outgoing Queue Caller Password</b>	Specify the caller Password for the secured queue connection.
<b>Outgoing Queue Provider URL</b>	Specify the URL of the outgoing queue.
<b>Queue Principal</b>	Specify the queue principal.
<b>Queue Credential</b>	Specify the queue credential.
<b>Incoming Queue Name</b>	Specify the incoming queue name.
<b>Outgoing Queue Name</b>	Specify the outgoing queue name.
<b>SFMS Incoming Queue</b>	Specify the SFMS Incoming Queue.
<b>RTGS Incoming Queue</b>	Specify the RTGS incoming Queue.
<b>EMS Bulker Queue</b>	Specify the EMS Bulker Queue

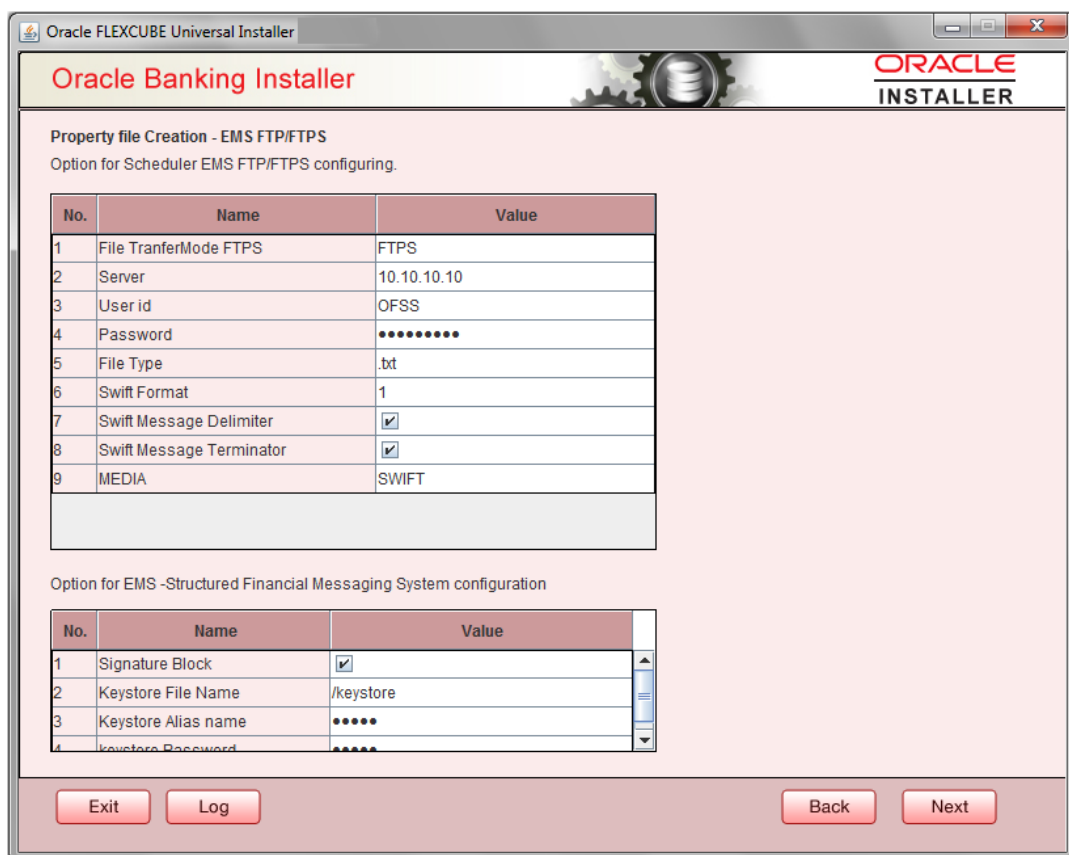
4. Once you have specified the above details, click '**Next**' and system displays the next screen.

## 1.2.5 Setting EMS FTP/FTPS Properties

This topic explains the EMS FTP/FTPS properties.

1. Click the **Next** button and the following screen is displayed. **Oracle Banking Installer - Property File Creation - EMS FTP/FTPS** screen is displayed.

**Figure 1-2 Oracle Banking Installer - Property File Creation - EMS FTP/FTPS**



2. On the **Oracle Banking Installer - Property File Creation - Scheduler EMS Queue** screen, specify the EMS FPT/FTPS fields.  
For more information on fields, refer the table below:

Field	Description
<b>File Transfer Mode FTPS</b>	Specify the mode of transferring files to EMS. Select one of the following: <ul style="list-style-type: none"> <li>• FTPS</li> <li>• SFTP</li> <li>• HTTP</li> </ul>
<b>Server</b>	Specify the server IP address for the selected file transfer mode.
<b>User ID</b>	Specify the user ID to access the server of the file transfer mode.
<b>Password</b>	Specify the password to for the above user ID.
<b>File Type</b>	Specify the type of file that is transferred. By default, the Installer sets it as <b>'txt'</b> .
<b>SWIFT Message Delimiter</b>	Select check box if needed.
<b>SWIFT Message Terminator</b>	Select check box if needed.
<b>Media</b>	Specify the Media
<b>Signature Block</b>	Check this box to enable signature block.
<b>Keystore File Name</b>	Specify the keystore file name.
<b>Keystore Alias Name</b>	Specify the keystore alias name.
<b>Keystore Password</b>	Specify the keystore password.



- Once you have specified the above details, click '**Next**' and system displays the next screen.

## 1.2.6 Setting BIP/GI Upload Queue

This screen describes how to create the property file. Here, you need to set the BIP and BIP Advice report details.

- Click the **Next** button and the following screen is displayed. Oracle Banking Installer - Scheduler BIP/GI Upload Queue.

- In the **Oracle Banking Installer - Scheduler BIP/GI Upload Queues** screen, specify the fields.

For more information, refer the field description table.

Field	Description
<b>BIP Queue Name</b>	Specify the BIP queue name as ' <b>INTERNAL_BIPREPORT_QUEUE</b> '.
<b>BIP DeadLetter Queue Name</b>	Specify the BIP deadletter queue name as ' <b>INTERNAL_BIP_QUEUE_DLQ</b> '.
<b>BIPAdvice Queue Name</b>	Specify the BIP advice queue name as ' <b>INTERNAL_BIPADVREPORT_QUEUE</b> '.
<b>BIPAdvice DeadLetter Queue Name</b>	Specify the BIP advice dead letter queue name as ' <b>INTERNAL_BIP_ADVICE_QUEUE_DLQ</b> '.
<b>Queue Connection Factory</b>	Specify the queue connection factory as ' <b>BIPQCF</b> '.

Field	Description
<b>Secure</b>	Check this box to indicate that it is a secured deferred queue connection factory. The caller ID and caller password will be enabled. Specify the caller ID and caller password for the secured queue connection factory. Enter these values for GI Upload Queue.
<b>Queue Name</b>	Specify the queue name as ' <b>INTERNAL_GI_UPLOAD_QUEUE</b> '.
<b>Dead Letter Queue Name</b>	Specify the dead letter queue name as ' <b>INTERNAL_GI_UPLOAD_DLQ</b> '.
<b>Queue Connection Factory</b>	Specify the queue connection factory as ' <b>GI_UPLOAD_QCF</b> '.
<b>Secure</b>	Check this box to indicate that it is a secured deferred queue connection factory. The caller ID and caller password as shown in the following screen: Specify the caller ID and caller password for the secured queue connection factory.

- Once you have specified the above details, click '**Next**' and system displays the next screen.

## 1.2.7 Setting Report Properties

This section describes the methods to set report properties.

- Click the **Next** button and the following screen is displayed. Oracle Banking Installer - Property File Creation - Reports screen is displayed.

Oracle FLEXCUBE Universal Installer

**Oracle Banking Installer** ORACLE INSTALLER

Property File Creation - Reports

Option for modifying the Oracle BI Publisher properties.

No.	Name	Value
1	Server End Point	http://10.10.10.10:0101/xmlpserver/services/N2/ReportService?wsdl
2	Name Space	http://xmlns.oracle.com/oxp/service/PublicReportService
3	User Name	Administrator
4	Password	.....
5	Reports Advice Spool Path	/ReportsSpool
6	Advice Type	NATIVE
7	BIP Server Version	12c
8	BIP Time Zone	IST

Option for modifying the OBIEE and other property values

OBIEE ENABLED

OBIEE URL

OBIEE FOLDER

OBIEE SIGNOUT URL

- On the **Oracle Banking Installer - Property File Creation - Reports** screen, specify the Publisher Properties fields.

For more information, refer the field description table

Field	Description
<b>Server End Point</b>	Specify the BIP end point. http://whf00blq:9502/xmlpserver/services/v2/ReportService?wsdl However, you need to change the IP and port where BIP Application is installed. WSDL URL gets modified based on "BIP Server Version" on selecting the required version from the drop-down.
<b>Name Space</b>	Specify the BIP name space. By default, the installer displays 'http://xmlns.oracle.com/oxp/service/PublicReportService'.
<b>User Name</b>	Specify the BIP user name. By default, the Installer displays ' <b>Administrator</b> '.
<b>Password</b>	Specify the password for the above user name. By default, the Installer sets it as ' <b>Administrator</b> '.
<b>Reports Spool Path</b>	Specify the reports spool path. By default, the Installer displays / ReportsSpool
<b>Advice Type</b>	Specify the advice type. You can choose one of the following: <ul style="list-style-type: none"> <li><b>NATIVE</b> - This advice type is used for generating advices in text format</li> <li><b>BIP</b> - This advice type is used for generating advices in PDF format.</li> </ul>
<b>BIP Server Version</b>	Specify the qualified BIP server version. Example : 12c
<b>BIP Time Zone</b>	Specify the time zone of the BIP server. Specify the following details:
<b>Factory Initial</b>	Specify the factory initial.
<b>Provider URL</b>	Specify the URL of the server. Enter the IP address, target server port (AdminServer/ManagedServer) and the context root.
<b>Security Principal</b>	Specify the user name to access the application server where BPEL is installed.
<b>Security Credential</b>	Specify the password for the above user name.
<b>Soa Partition Name</b>	Specify the Soa Server Name. By default it will be the Installer sets it to ' <b>default</b> '.
<b>Domain Password</b>	Specify the domain password for which SOA server is extended
<b>Dedicated Connection</b>	Check this box to indicate that this connection is not used for other purposes.
<b>BPEL Realm Name</b>	Specify the BPEL realm name.
<b>BAM URI</b>	Specify the BAM URI.
<b>BPM Installed</b>	Check this box if the BPM is installed.
<b>BI User</b>	Specify the BI user.
<b>BI Password</b>	Specify the password for BI user.
<b>External Alerts Required</b>	Check this box to enable External Alerts Required.
<b>Enabling Load Balance</b>	Check this box to enable BPEL load balance.
<b>Frequency</b>	Specify the balance load frequency.
<b>Task Counts</b>	Specify the balance load task count.
<b>Cut-off Time</b>	Specify the balance load cut-off time.

- Once you have specified the above details, click 'Next' and system displays the next screen.

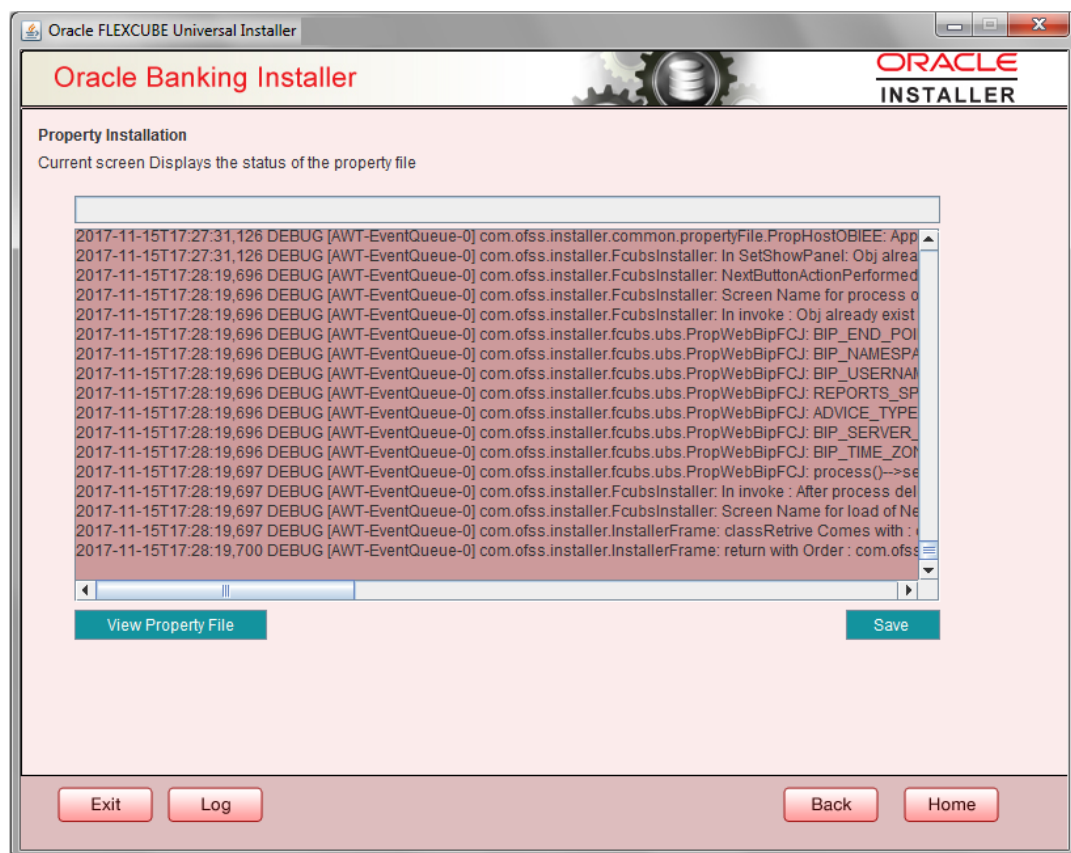
## 1.2.8 Saving Property File

This topic explains to save the property file.

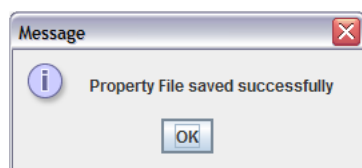
After completing all the required settings explained above, you need to save the property file.

- Save the property file.

**Figure 1-3 Property Installation**

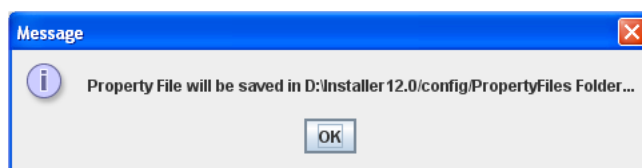


- You can view the status of property file creation in the above screen. Once the file is saved, the installer displays the following message:



Two property files: fcubs.properties and scheduler.properties are saved.

- If you do not use the 'Save' or 'Save As' buttons, the installer will save the properties file in '<InstallerSources>\config\PropertyFiles' folder. In that case, you will see the message below.



This completes the properties file creation.