

# Oracle Banking Trade Finance

## GATEWAY Property File Creation



Release 14.7.4.0.0  
F99208-01  
June 2024



Oracle Banking Trade Finance GATEWAY Property File Creation, Release 14.7.4.0.0

F99208-01

Copyright © 2007, 2024, Oracle and/or its affiliates.

Primary Authors: (primary author), (primary author)

Contributing Authors: (contributing author), (contributing author)

Contributors: (contributor), (contributor)

This software and related documentation are provided under a license agreement containing restrictions on use and disclosure and are protected by intellectual property laws. Except as expressly permitted in your license agreement or allowed by law, you may not use, copy, reproduce, translate, broadcast, modify, license, transmit, distribute, exhibit, perform, publish, or display any part, in any form, or by any means. Reverse engineering, disassembly, or decompilation of this software, unless required by law for interoperability, is prohibited.

The information contained herein is subject to change without notice and is not warranted to be error-free. If you find any errors, please report them to us in writing.

If this is software, software documentation, data (as defined in the Federal Acquisition Regulation), or related documentation that is delivered to the U.S. Government or anyone licensing it on behalf of the U.S. Government, then the following notice is applicable:

U.S. GOVERNMENT END USERS: Oracle programs (including any operating system, integrated software, any programs embedded, installed, or activated on delivered hardware, and modifications of such programs) and Oracle computer documentation or other Oracle data delivered to or accessed by U.S. Government end users are "commercial computer software," "commercial computer software documentation," or "limited rights data" pursuant to the applicable Federal Acquisition Regulation and agency-specific supplemental regulations. As such, the use, reproduction, duplication, release, display, disclosure, modification, preparation of derivative works, and/or adaptation of i) Oracle programs (including any operating system, integrated software, any programs embedded, installed, or activated on delivered hardware, and modifications of such programs), ii) Oracle computer documentation and/or iii) other Oracle data, is subject to the rights and limitations specified in the license contained in the applicable contract. The terms governing the U.S. Government's use of Oracle cloud services are defined by the applicable contract for such services. No other rights are granted to the U.S. Government.

This software or hardware is developed for general use in a variety of information management applications. It is not developed or intended for use in any inherently dangerous applications, including applications that may create a risk of personal injury. If you use this software or hardware in dangerous applications, then you shall be responsible to take all appropriate fail-safe, backup, redundancy, and other measures to ensure its safe use. Oracle Corporation and its affiliates disclaim any liability for any damages caused by use of this software or hardware in dangerous applications.

Oracle®, Java, MySQL, and NetSuite are registered trademarks of Oracle and/or its affiliates. Other names may be trademarks of their respective owners.

Intel and Intel Inside are trademarks or registered trademarks of Intel Corporation. All SPARC trademarks are used under license and are trademarks or registered trademarks of SPARC International, Inc. AMD, Epyc, and the AMD logo are trademarks or registered trademarks of Advanced Micro Devices. UNIX is a registered trademark of The Open Group.

This software or hardware and documentation may provide access to or information about content, products, and services from third parties. Oracle Corporation and its affiliates are not responsible for and expressly disclaim all warranties of any kind with respect to third-party content, products, and services unless otherwise set forth in an applicable agreement between you and Oracle. Oracle Corporation and its affiliates will not be responsible for any loss, costs, or damages incurred due to your access to or use of third-party content, products, or services, except as set forth in an applicable agreement between you and Oracle.

# Contents

## 1 Creating Property File for Gateway Applications

---

1.1	Introduction	1-1
1.2	Creating Property Files	1-1
1.2.1	Gateway EJB Application	1-3
1.2.2	Gateway MDB Application	1-13
1.2.3	Gateway HTTP Servlet Application	1-22
1.2.4	Gateway Web Service Application	1-26
1.2.5	REST Services Application	1-38

## Index

---

## List of Figures

---

1-1	Oracle Banking Installer	1-1
1-2	Select One of the Components	1-2
1-3	Provide Environment Details	1-2
1-4	Gateway Property File Creation	1-3
1-5	Multi Entity Names	1-4
1-6	Property File Creation	1-5
1-7	Property File Creation	1-5
1-8	Property File Creation	1-7
1-9	Property File Creation	1-8
1-10	Property File Creation	1-10
1-11	Property Installation	1-12
1-12	Gateway Property File Creation	1-13
1-13	Multi Entity Names	1-13
1-14	Property File Creation	1-15

## List of Tables

---

1-1	Multi Entity Names - Field Description.	1-5
1-2	Property File Creation	1-6
1-3	Property File Creation	1-9
1-4	Property File Creation	1-11
1-5	Multi Entity Names - Field Description	1-14
1-6	Property File Creation	1-35

# 1

## Creating Property File for Gateway Applications

### 1.1 Introduction

This chapter explains the steps to create the property file for the gateway components viz. Enterprise Java Bean (EJB), Message Driven Beans (MDB), Web Services and Servlet.

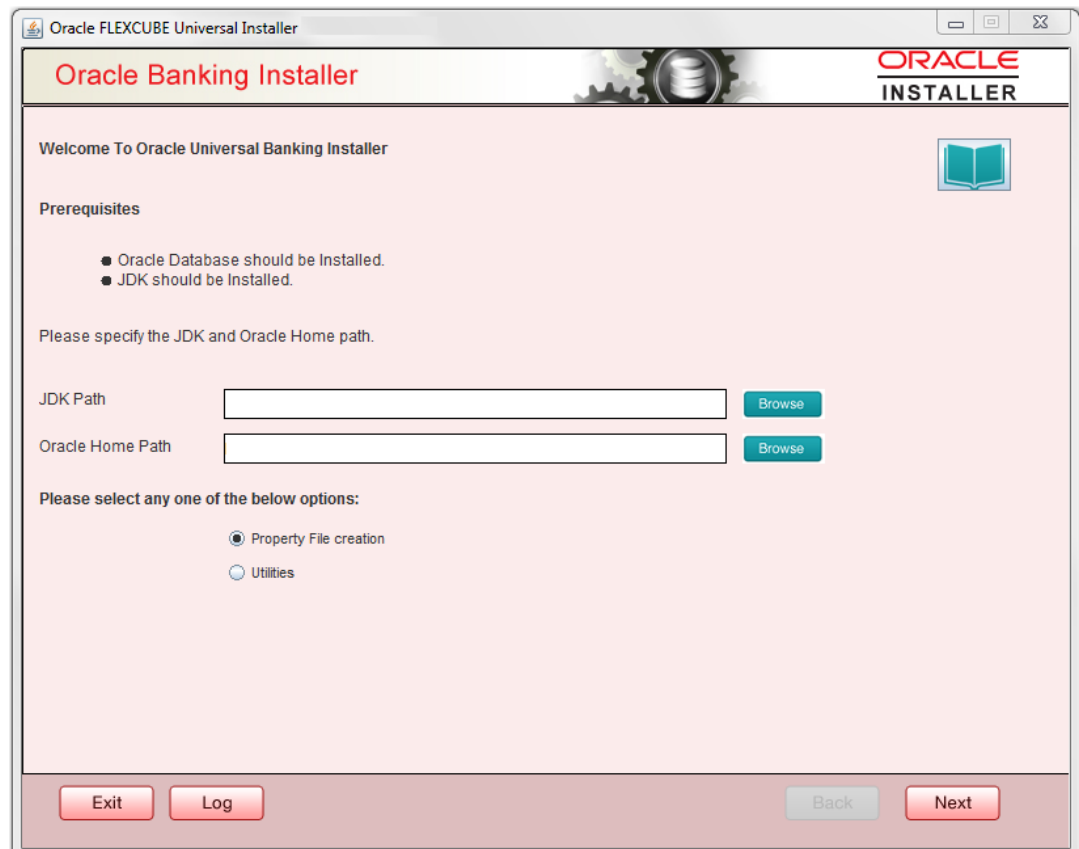
### 1.2 Creating Property Files

This topic explains systematic instructions to create the property file for the Gateway application.

Follow the steps given below:

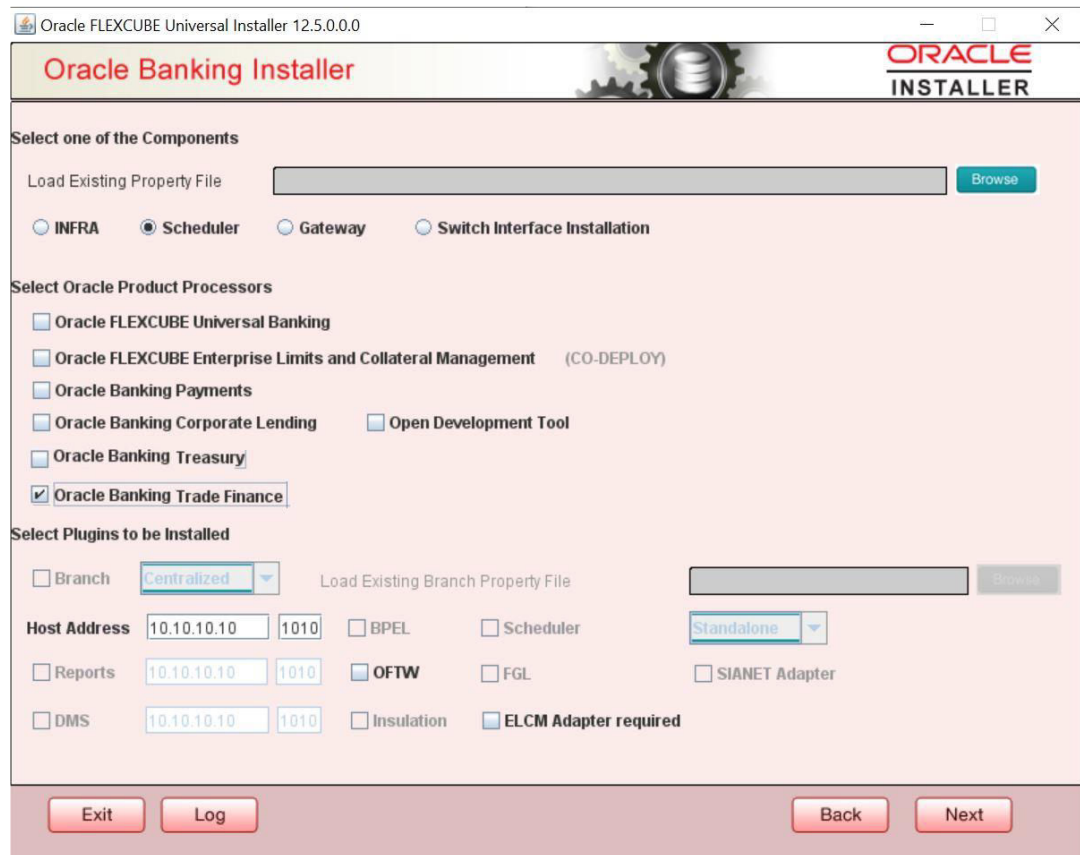
1. Start Oracle Banking Trade Finance Solutions Installer - FCUBSInstaller.bat from INSTALLER\SOFT\GUI. Prerequisites screen is displayed.

**Figure 1-1 Oracle Banking Installer**



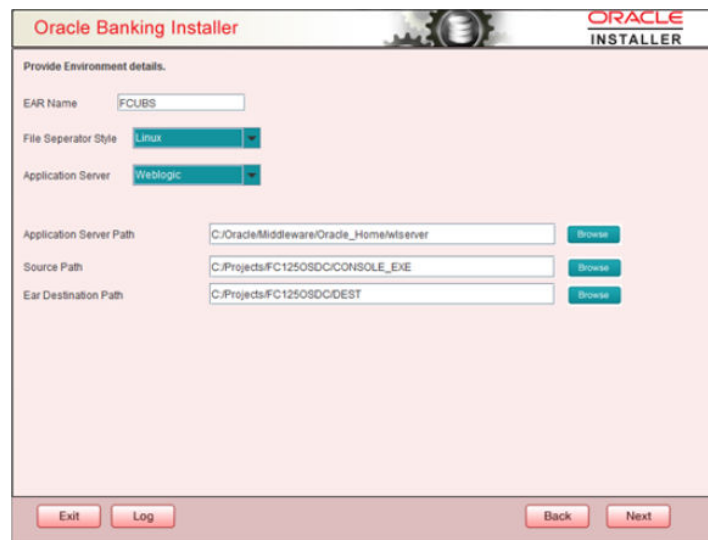
2. On the **Welcome To Oracle Universal Banking Installer** screen, click Browse, and specify the JDK Path and Oracle Home Path.
3. On the **Welcome To Oracle FLEXCUBE Universal Banking Installer** screen, select the **Property File Creation** option, and click Next. The **Select One of the Components** screen displays.

**Figure 1-2 Select One of the Components**



4. Select component as '**Gateway**', and click Next. The Environment Details screen displays.

**Figure 1-3 Provide Environment Details**



5. Specify the EAR Name, Application Server Path, Source Path, and EAR destination path, and then click **Next**.

  - [Gateway EJB Application](#)  
This topic explains systematic instructions to create a property file by choosing Gateway EJB as the application type.
  - [Gateway MDB Application](#)  
This topic provides systematic instructions to create a Property File by choosing Gateway MDB Application as the application type.
  - [Gateway HTTP Servlet Application](#)
  - [Gateway Web Service Application](#)
  - [REST Services Application](#)

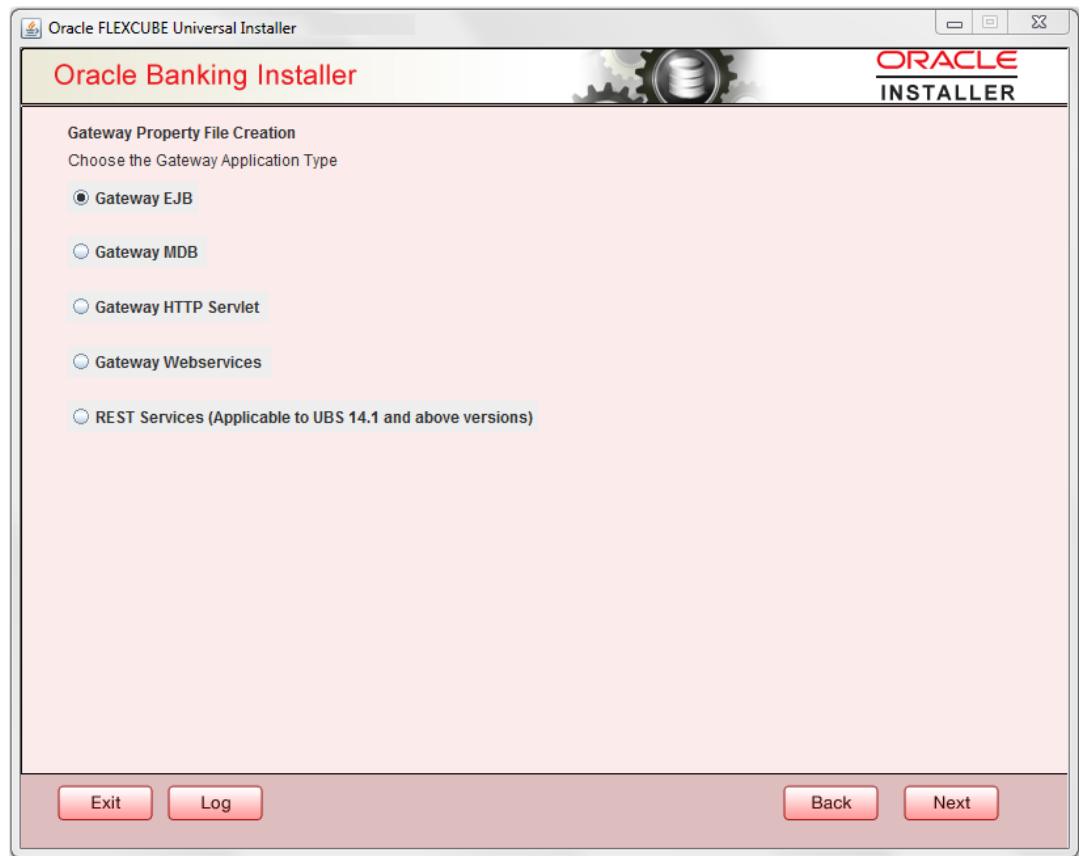
## 1.2.1 Gateway EJB Application

This topic explains systematic instructions to create a property file by choosing Gateway EJB as the application type.

1. On the **Gateway Property File Creation** screen, select '**Gateway EJB**' as the application type, and click **Next**.

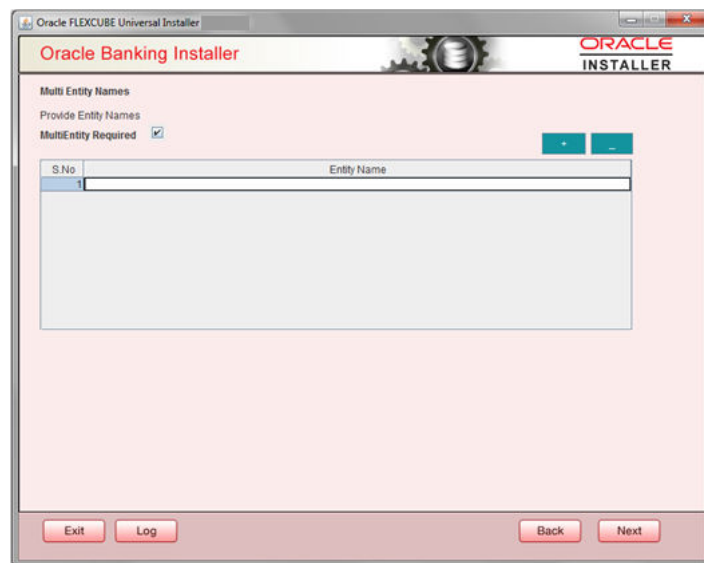
**Figure 1-4 Gateway Property File Creation**





The installer displays the 'Multi Entity' screen.

**Figure 1-5 Multi Entity Names**



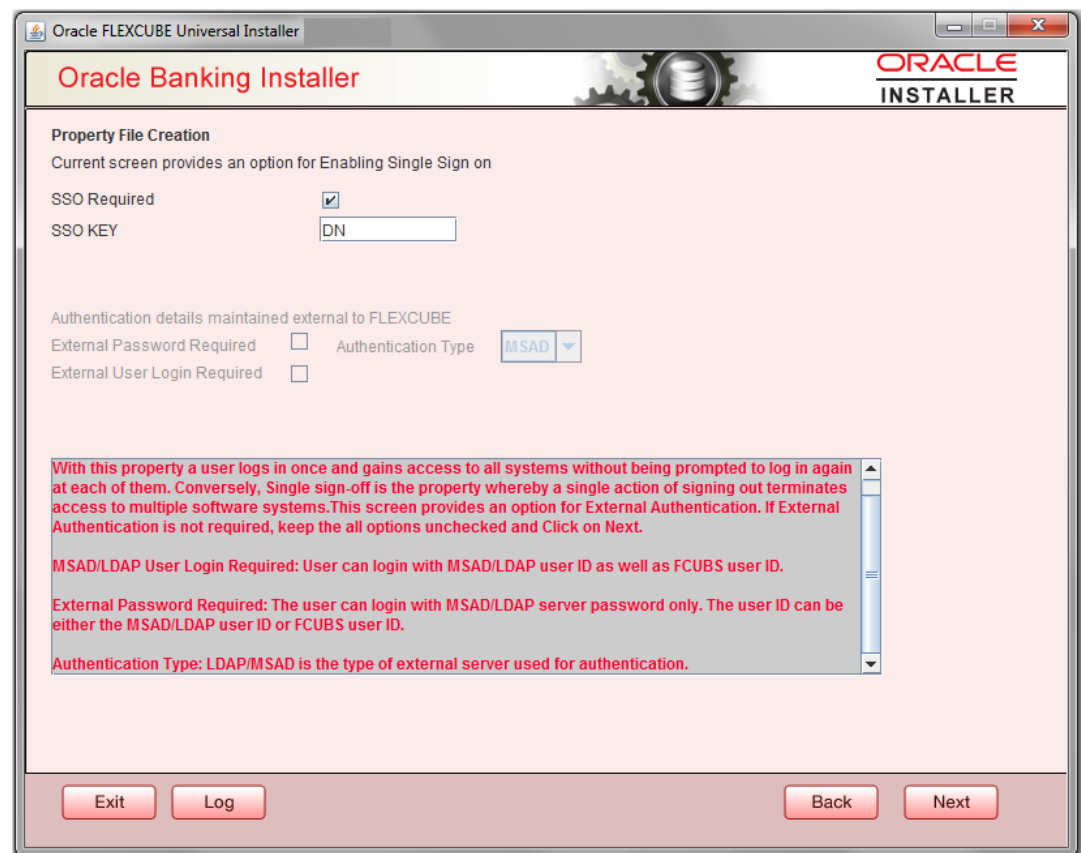
2. On the **Multi Entity Names** screen, specify the fields.  
For more information on fields, refer the table below:

**Table 1-1 Multi Entity Names - Field Description.**

Field	Description
<b>MultiEntity Required</b>	Select the multi entity check box for enabling the multi entity deployment. After selecting the multi entity option '+', '-' buttons will be enabled for capturing the entity Name.
<b>+ Button</b>	New row will be added for capturing new entity name.
<b>- Button</b>	Select the entity name and click – button, deletion of existing entity name will be done.
<b>Entity Name</b>	Enter the entity name as single word. For example: ENTITY1

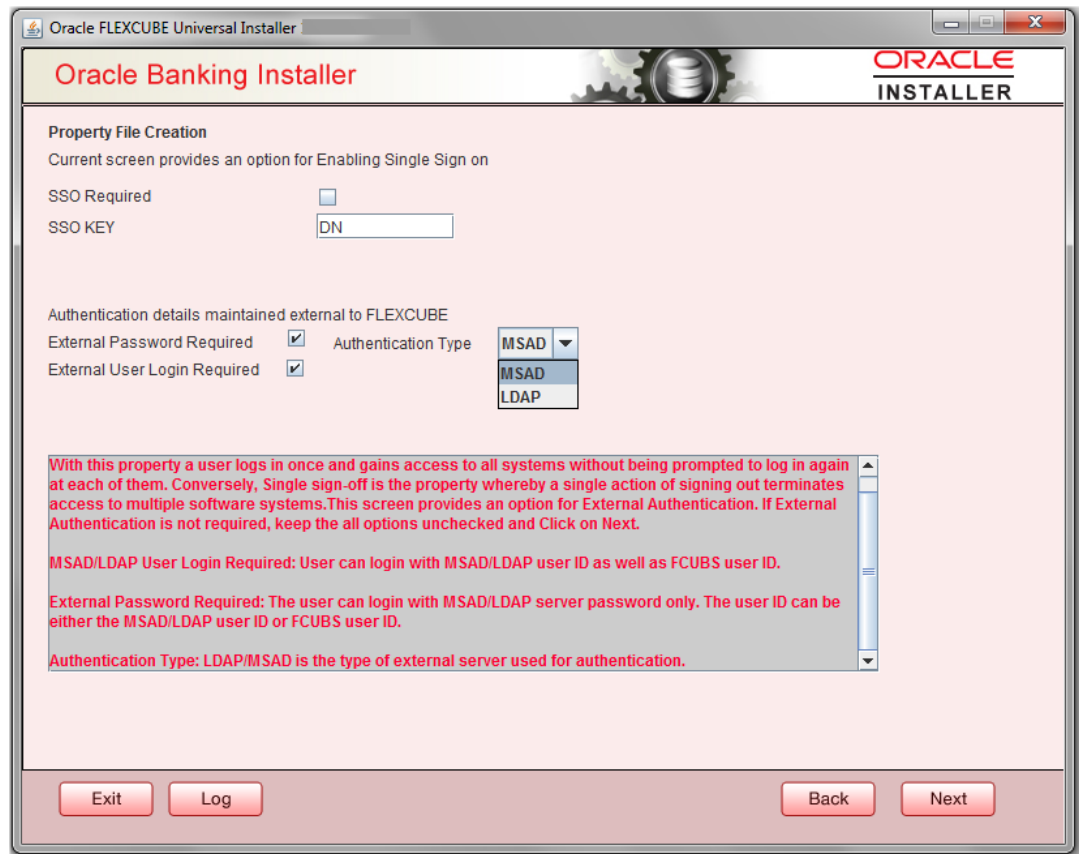
3. Click 'Next'. The **Property File Creation** screen displays.

**Figure 1-6 Property File Creation**




4. On the **Property File Creation** screen, specify the fields.

**Figure 1-7 Property File Creation**




For more information on fields, refer the table below:

**Table 1-2 Property File Creation**

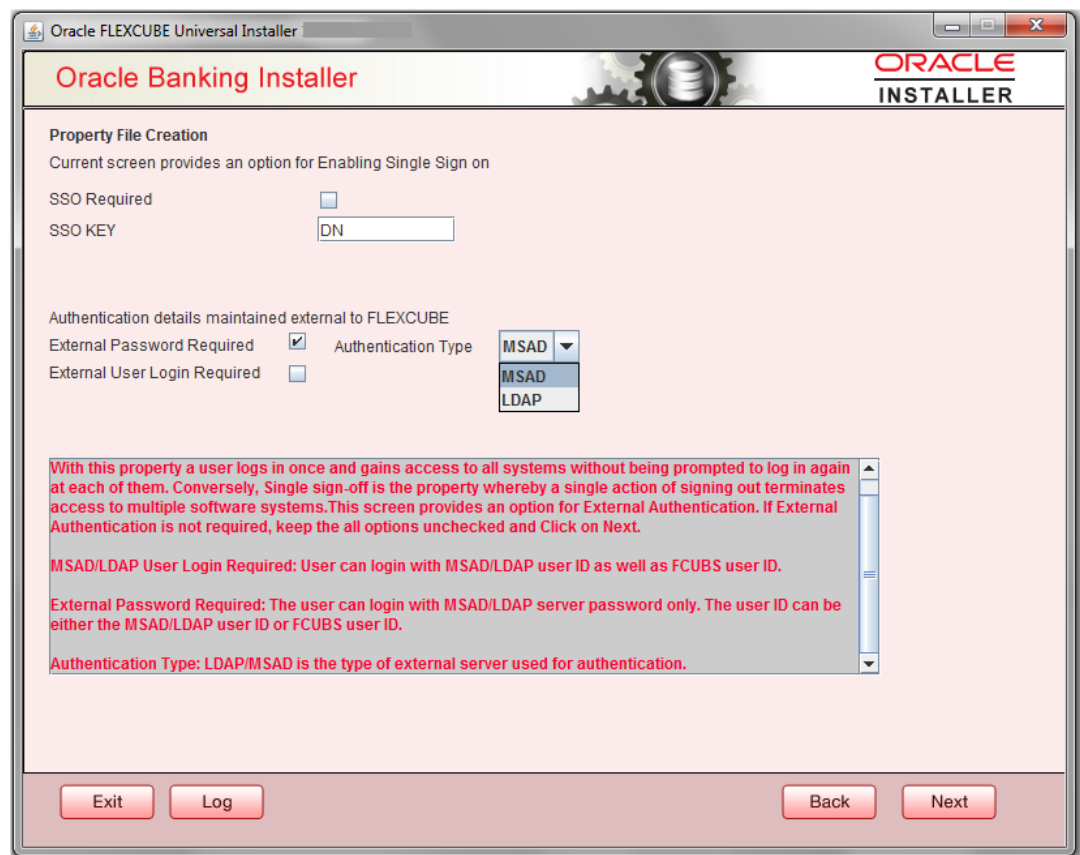
Field	Description
<b>SSO Required</b>	Check this box to enable single sign-on (SSO). If you check this box, you need to specify the SSO Key.
<b>SSO Key</b>	Specify the SSO key. If you have checked the box ' <b>SSO Required</b> ', it is mandatory to specify the SSO key.   If you have checked the box ' <b>SSO Required</b> ', then the Installer will skip the following two screens and will directly navigate to the SSL screen shown below in this manual. If you have not checked the box ' <b>SSO Required</b> ', then click ' <b>Next</b> '. The following screen is displayed.

**Table 1-2 (Cont.) Property File Creation**

Field	Description
<b>External User Login Required</b>	<p>Check this box to enable user login using MSAD/LDAP user Id.</p> <div style="border: 1px solid #0070C0; padding: 10px; margin-top: 10px;"> <p> <b>Note:</b></p> <p>If you check this box, the user can login with MSAD/LDAP server user Id as well as FCUBS user Id. If you do not check this box, the user can login using FCUBS user Id only. (MSAD: Microsoft Active Directory, LDAP: Lightweight Directory Access Protocol.)</p> </div>
<b>External Password Required</b>	<p>Check this box to allow user login using MSAD/LDAP password irrespective of the user Id.</p> <p>If you check this box, the user can login using MSAD/LDAP server password only. The user Id can be one of the following:</p> <ul style="list-style-type: none"> <li>• MSAD/LDAP user Id</li> <li>• OBTFM user Id</li> </ul> <p>If you do not check this box, then the installer skips the following screen and directly navigates to the Modifying Gateway Properties screen.</p>
<b>Authentication Type</b>	<p>Select the authentication type. This is the type of external server that is used. You can select one of the following options:</p> <ul style="list-style-type: none"> <li>• MSAD (Microsoft Active Directory)</li> <li>• LDAP (Lightweight Directory Access Protocol)</li> </ul> <p>The default option is MSAD; however, you can change it</p>

5. Select the authentication type.

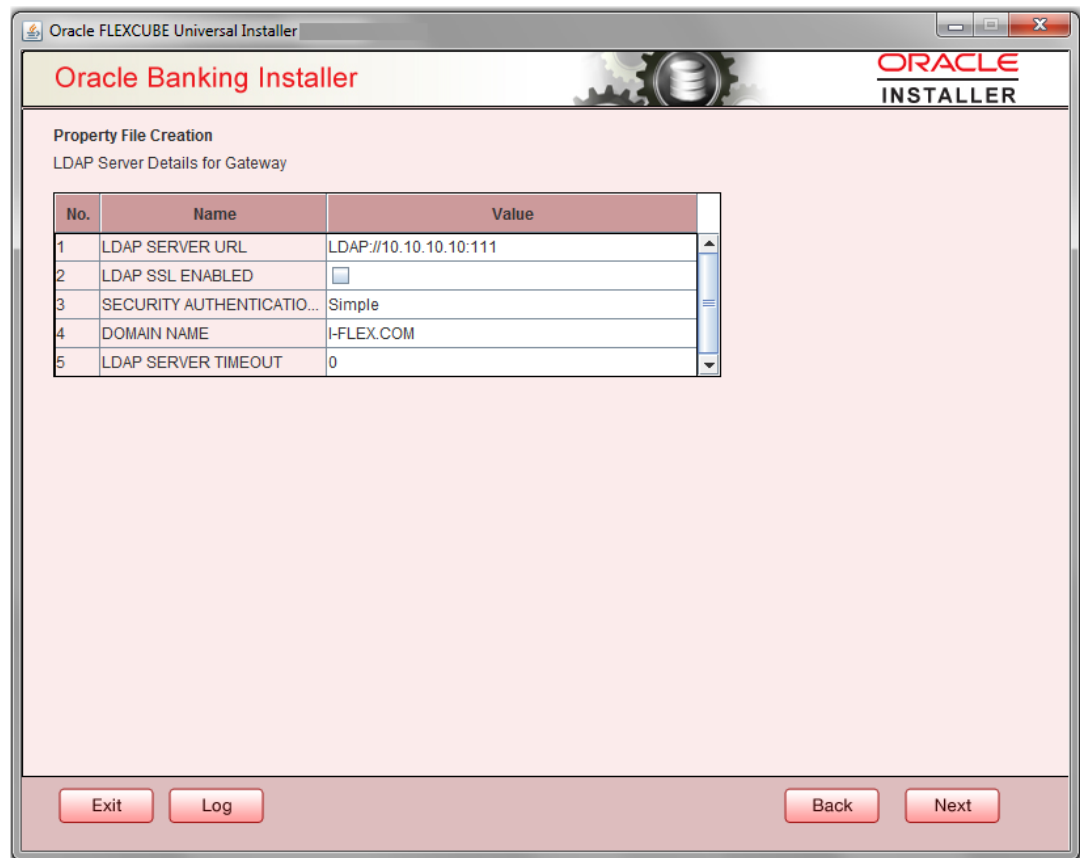
**Figure 1-8 Property File Creation**



If you checked the boxes (**External User Login Required** and **External Password Required**), then the installer navigates to the following screen.


6. Click **Next**. The **Property File Creation** screen displays.

**Figure 1-9** Property File Creation



7. Specify the following LDAP server details.  
For more information on fields, refer the table below:

**Table 1-3 Property File Creation**

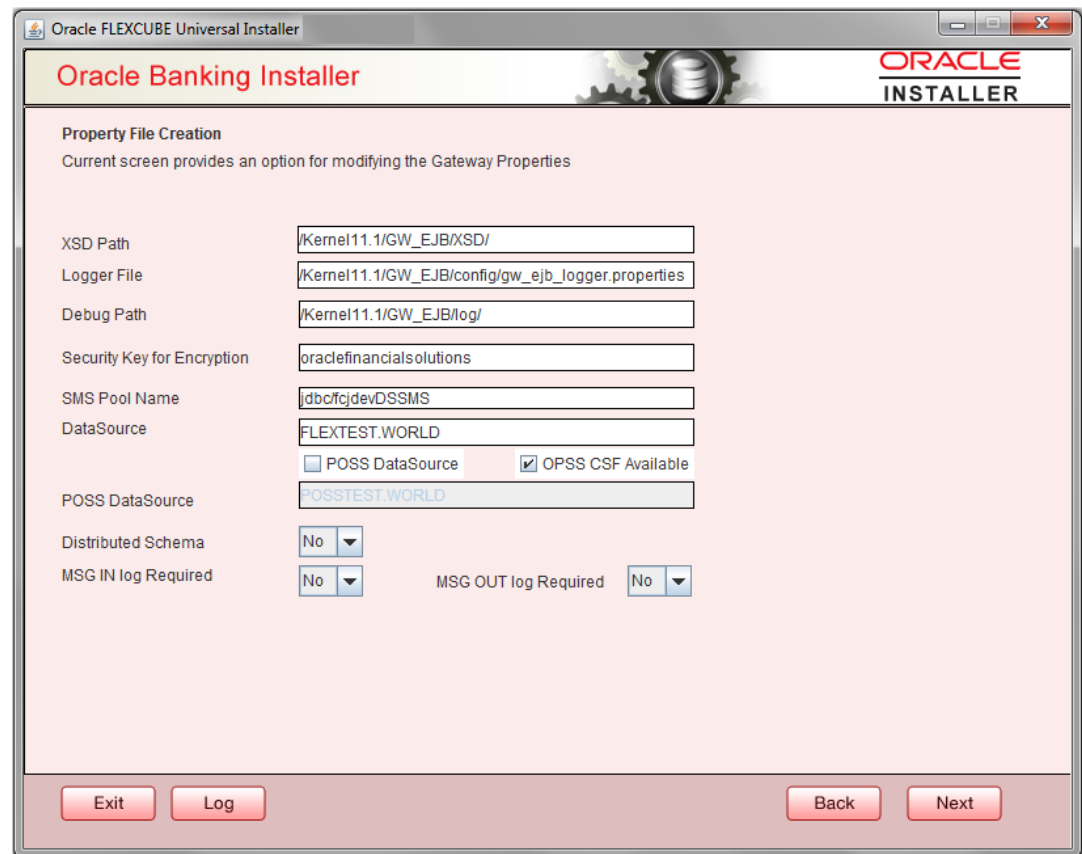
Field	Description
<b>LDAP Server URL</b>	Specify the URL to access the LDAP server where the external user ID and password are maintained.
<b>LDAP SSL Enabled</b>	Check this box if the LDAP server is SSL enabled. If you check this box, then you need to specify the SSL port also in the field <b>LDAP SERVER URL</b> .
<b>Security Authentication Type</b>	<p>Depending on the authentication mechanism supported by the LDAP server, select one of the following:</p> <ul style="list-style-type: none"> <li>• simple</li> <li>• strong</li> </ul> <div style="border: 1px solid #0070C0; padding: 5px; margin-top: 10px;"> <p> <b>Note:</b></p> <ul style="list-style-type: none"> <li>• Different servers support different authentication mechanisms.</li> <li>• By default, the security authentication type is <b>'Simple'</b>; however, you can change this.</li> </ul> </div>
<b>Domain Name</b>	Specify the domain name.

**Table 1-3 (Cont.) Property File Creation**

Field	Description
<b>LDAP Server Timeout</b>	Specify the LDAP server timeout in milliseconds. This must be a positive integer value. For example you can specify 1000, 10000 or 5000. If it is zero or less, it indicates that no read timeout is specified. Then the wait for the response infinite until it is received.  By default, the LDAP server timeout is zero; however, you can change this.


- Click 'Next'. The following screen is displayed:

**Figure 1-10 Property File Creation**



- Specify the following details.  
For more information on fields, refer the table below:


**Table 1-4 Property File Creation**

Field	Description
<b>XSD Path</b>	Specify the path to the XSD file. File name is not required. File separator must be '/'. There must be a '/' at the end. All the relevant XSD files must be manually copied to this location. Example: For Windows: D:\Kernel11.1\GW_EJB\XSD\ For Linux: /Kernel11.1/GW_EJB/XSD/
<b>Logger File</b>	Specify the path to the ' <b>gw_ejb_logger.properties</b> ' file with the file name. The file must be manually copied to the specified location. Example: For windows: D:\Kernel11.1\GW_EJB\config\gw_ejb_logger.properties For Linux: /Kernel11.1/GW_EJB/config/gw_ejb_logger.properties
<b>Debug Path</b>	Specify the path to the folder where the application creates the logs. There must be a '/' at the end. You need to manually create the specified folder structure. Example: For windows: D:\Kernel11.1\GW_EJB\log\ For Linux: /Kernel11.1/GW_EJB/log/
<b>Security Key for Encryption</b>	Specify the security key for the Encryption, here in this case it is ' <b>Oraclefinancialsolutions</b> '.
<b>SMS Pool Name</b>	Specify SMS Pool Name, here in this case it is ' <b>jdbc/fcdevDSSMS</b> '.
<b>DataSource</b>	The JDBC data source is an object bound to JNDI tree and provides database connectivity through a pool of JDBC connections.
<b>POSS Datasource</b>	Check this box if POSS is required. If you check this box, you need to specify the POSS Datasource Name in the field below this.
<b>OPSS CSF Available</b>	Indicate whether OPSS-CSF is installed or not.  <div style="border-left: 2px solid #0070C0; padding-left: 10px; margin-left: 20px;"> <b>Note:</b>  Please choose this only if Oracle Platform Security Services - Credential Store Framework (CSF) is installed as per the guidelines in the pre-requisite document. It is recommended that you install CSF for safeguarding application specific security credentials.</div>
<b>Distributed Schema</b>	If the schema is distributed, select ' <b>Yes</b> '. If the schema is not distributed, select ' <b>No</b> '.
<b>MSG IN LOG Required</b>	Choose Yes/No from drop down box.



**Table 1-4 (Cont.) Property File Creation**

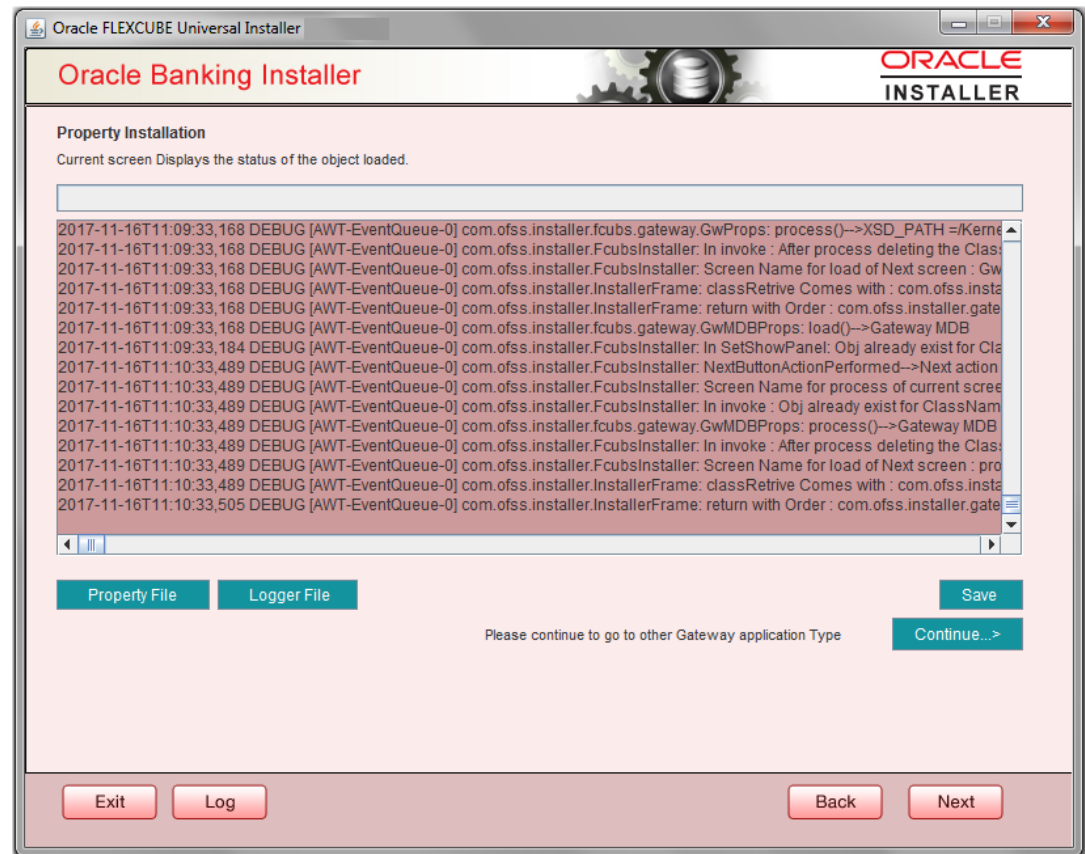
Field	Description
<b>MSG OUT LOG Required</b>	Choose Yes/No from drop down box.

 **Note:**

The Installer creates two files viz. **'gw\_ejb\_logger.properties'** and **'GW\_EJB\_Prop.properties'** in the path provided to save the files.

- Click **'Next'**. The following screen is displayed.

**Figure 1-11 Property Installation**



The property file will be created in a temporary folder.

- Click **'Property File'** to view the created property file.
- Click **'Save'** to save the created property file in the desired location.
- Click **'Next'** to navigate to the installer home screen.

For Gateway EJB EAR Building refer 'OBTF\_EAR\_Building document'

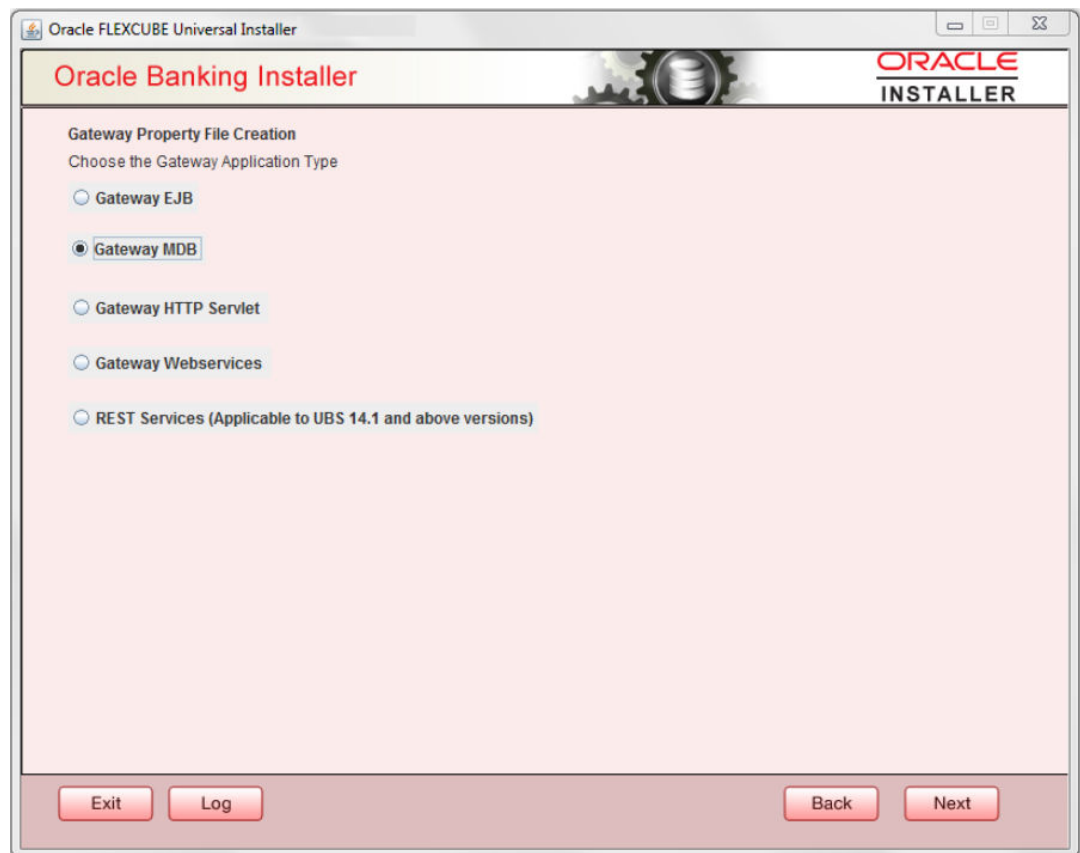
## 1.2.2 Gateway MDB Application

This topic provides systematic instructions to create a Property File by choosing Gateway MDB Application as the application type.

Follow the steps given below:

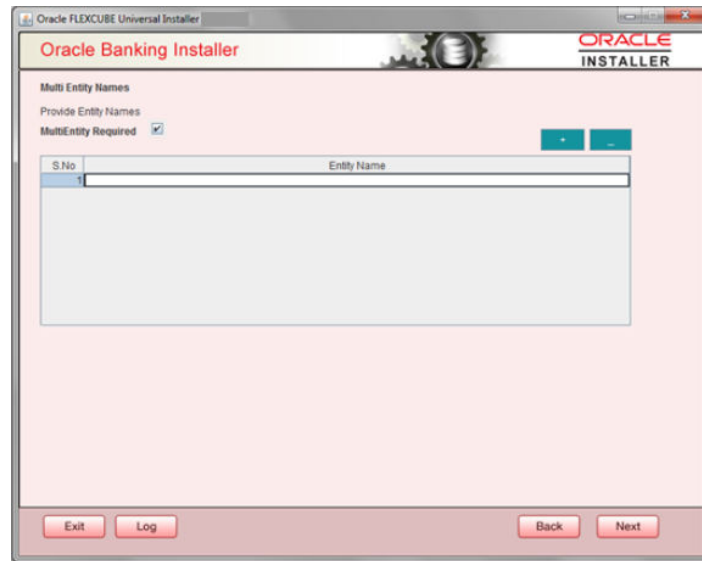
1. On the **Gateway Property File Creation** screen, select **Gateway MDB** as the application type as shown in the below Screen.

**Figure 1-12 Gateway Property File Creation**



2. Click **Next**. The installer displays the **'Multi Entity'** screen

**Figure 1-13 Multi Entity Names**



3. On the **Multi Entity Names** screen, specify the fields.

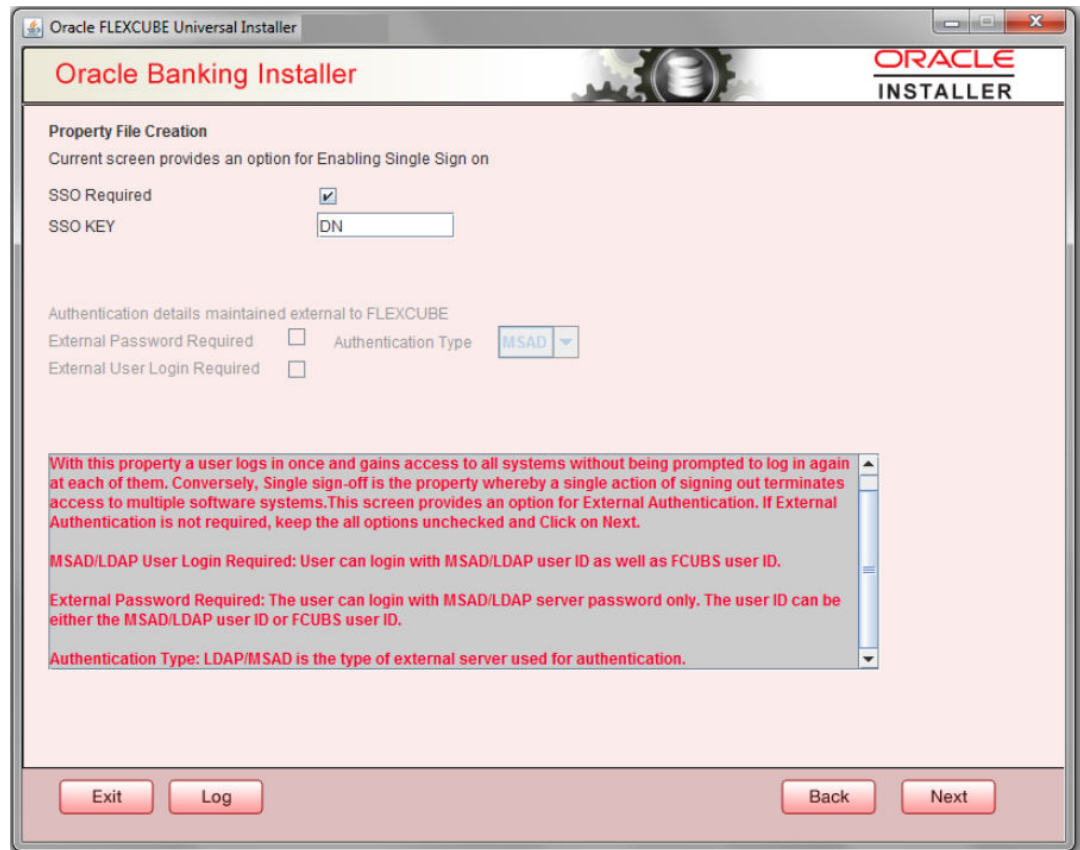
For more information on fields, refer the table below:

**Table 1-5 Multi Entity Names - Field Description**

Field	Description
<b>MultiEntity Required</b>	Select the multi entity check box for enabling the multi entity deployment. After selecting the multi entity option '+', '-' buttons will be enabled for capturing the entity Name.
<b>+ Button</b>	New row will be added for capturing new entity name.
<b>- Button</b>	Select the entity name and click – button, deletion of existing entity name will be done.
<b>Entity Name</b>	Enter the entity name as single word. For example: ENTITY1

4. Click **'Next'**. The following screen is displayed:

**Figure 1-14 Property File Creation**



5. Specify the field details.

For more information on fields, refer the table below:

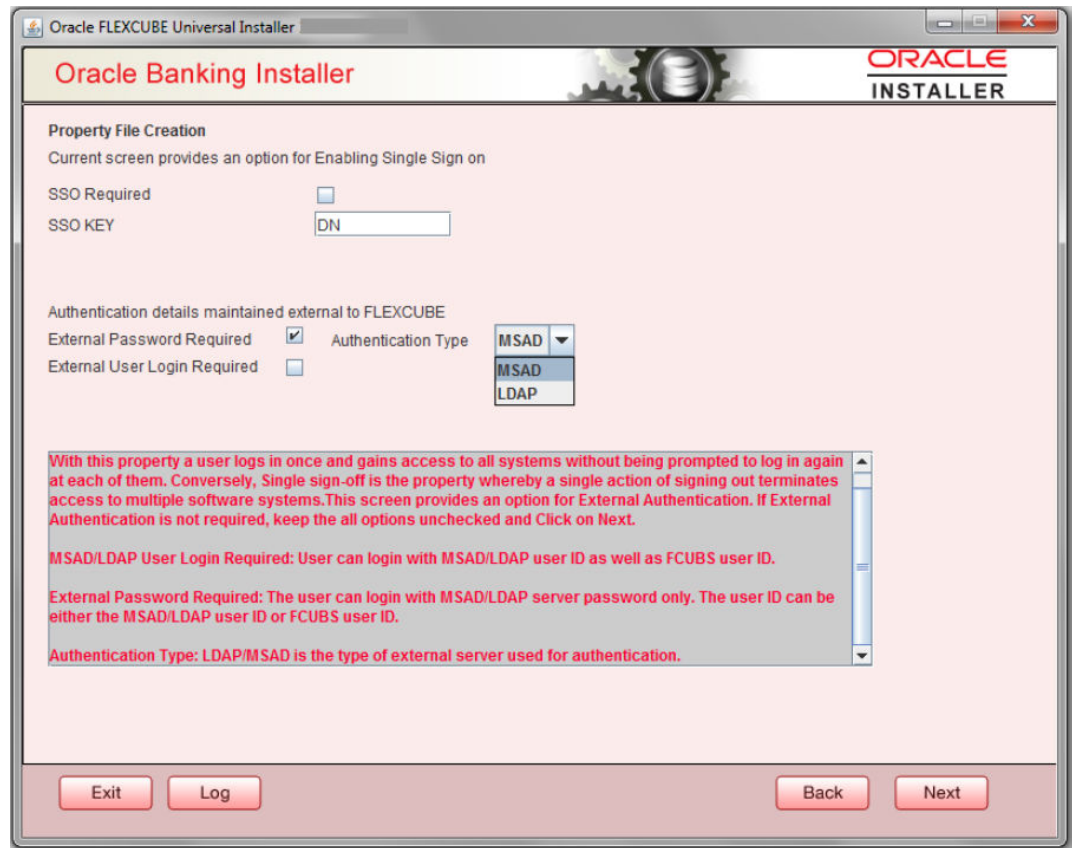
Field	Description
<b>SSO Required</b>	Check this box to enable single sign-on (SSO). If you check this box, you need to specify the SSO Key.
<b>SSO Key</b>	Specify the SSO key. If you have checked the box ' <b>SSO Required</b> ', it is mandatory to specify the SSO key.  If you have checked the box ' <b>SSO Required</b> ', then the Installer will skip the following two screens and will directly navigate to the Modifying the Gateway properties Screen.

**External Password Required**

Check this box to allow the user-login using MSAD/LDAP password irrespective of the user ID. If you check this box, the user ID can be either the MSAD/LDAP user ID or the FCUBS user ID. And the password can be MSAD/LDAP server password only.

By default, this check box is unchecked. However, you can change this.

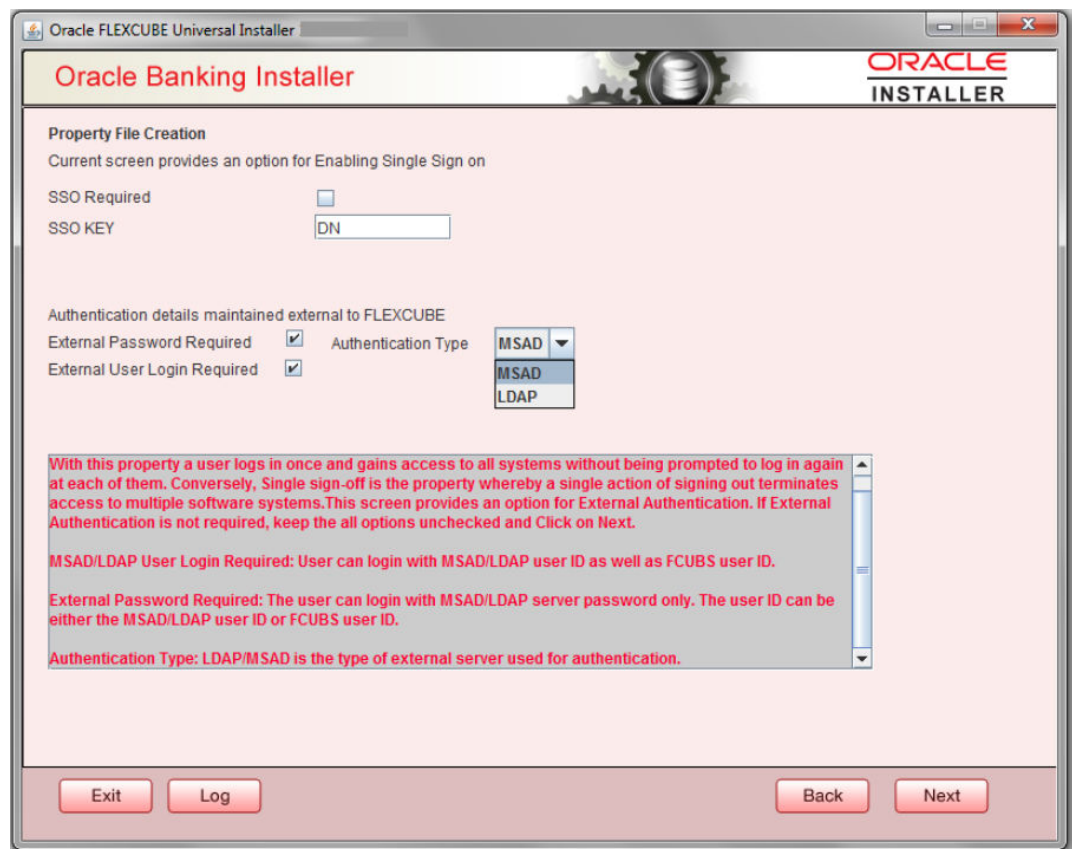
If you do not check this box, the installer skips the following screen and directly navigates you to the Modifying the Gateway Properties Screen.



### External User Login Required

Check this box to enable user login using MSAD/LDAP user ID. If you check this box, the user can login using MSAD/LDAP server user ID as well as using FCUBS user ID. If you do not check this, the user can login using FCUBS user ID only.

By default, this check box is unchecked. However, you can change this.



The field '**Authentication Type**' is enabled if one of the above check boxes is checked:

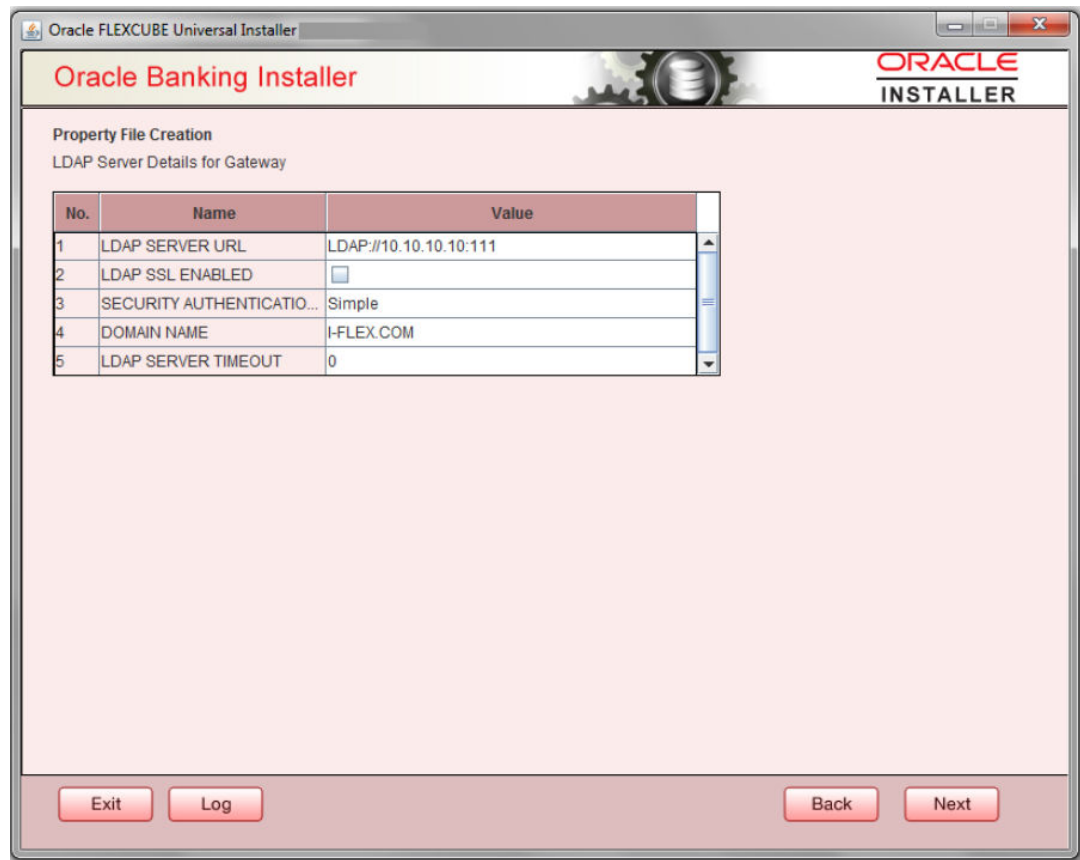
### Authentication Type

Select the authentication type from the adjoining drop-down list. This is the type of external server that is used. You can select one of the following options:

- MSAD (Microsoft Active Directory)
- LDAP (Lightweight Directory Access Protocol)


By default, 'MSAD' is selected; however, you can change it.

6. Click '**Next**'. The following screen is displayed.



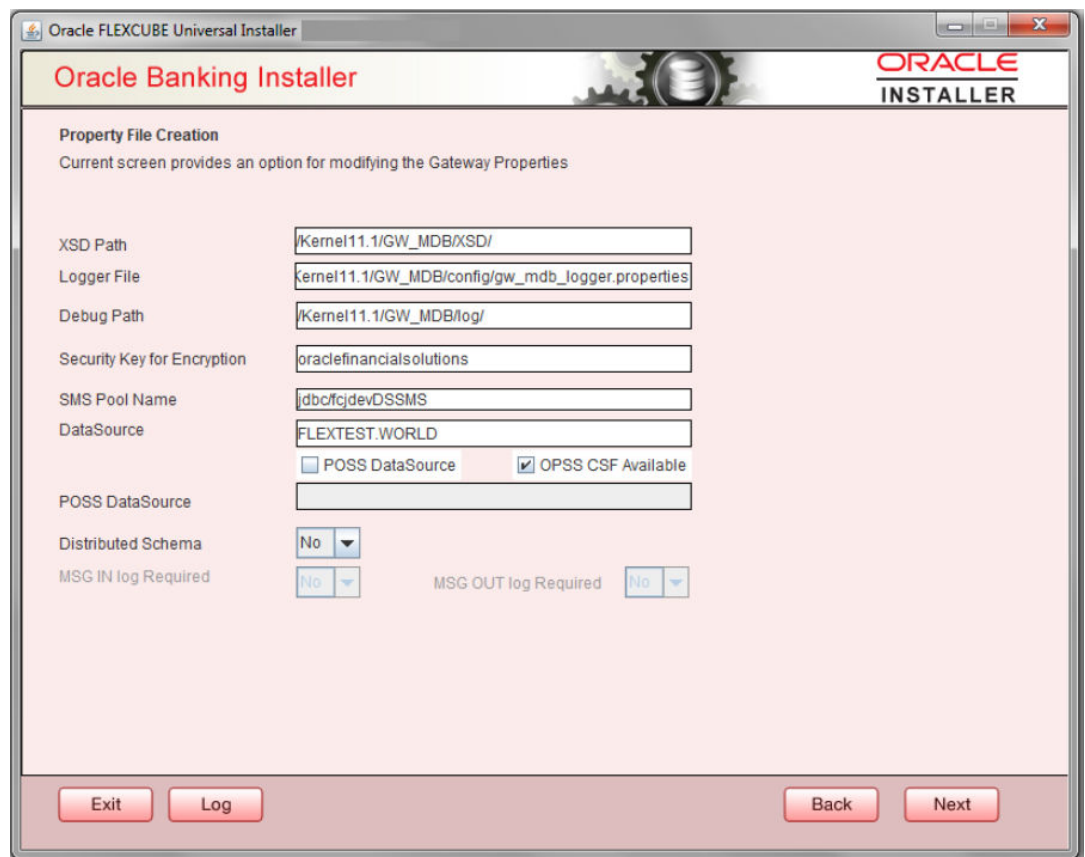
7. Specify the following LDAP server details.

For more information on fields, refer the table below:

Field	Description
<b>LDAP Server URL</b>	Specify the URL to access the LDAP server where the external user ID and password are maintained.
<b>LDAP SSL Enabled</b>	Check this box if the LDAP server is SSL enabled. If you check this box, then you need to specify the SSL port also in the field <b>LDAP SERVER URL</b> . By default, this check box is unchecked. However, you can change this.
<b>Security Authentication Type</b>	Depending on the authentication mechanism supported by the LDAP server, select one of the following: <ul style="list-style-type: none"> <li>• Simple</li> <li>• Strong</li> </ul>  <p>Note the following:</p> <ul style="list-style-type: none"> <li>• Different servers support different authentication mechanisms.</li> <li>• By default, the security authentication type is <b>'Simple'</b>; however, you can change this.</li> </ul>
<b>Domain Name</b>	Specify the domain name.

Field	Description
<b>LDAP Server Timeout</b>	Specify the LDAP server timeout in milliseconds. This must be a positive integer value. For example you can specify 1000, 10000 or 5000. If it is zero or less, it indicates that no read timeout is specified. Then the wait for the response infinite until it is received.  By default, the LDAP server timeout is zero; however, you can change this.

Click **'Next'**. The following screen is displayed:




**8. Specify the field details.**

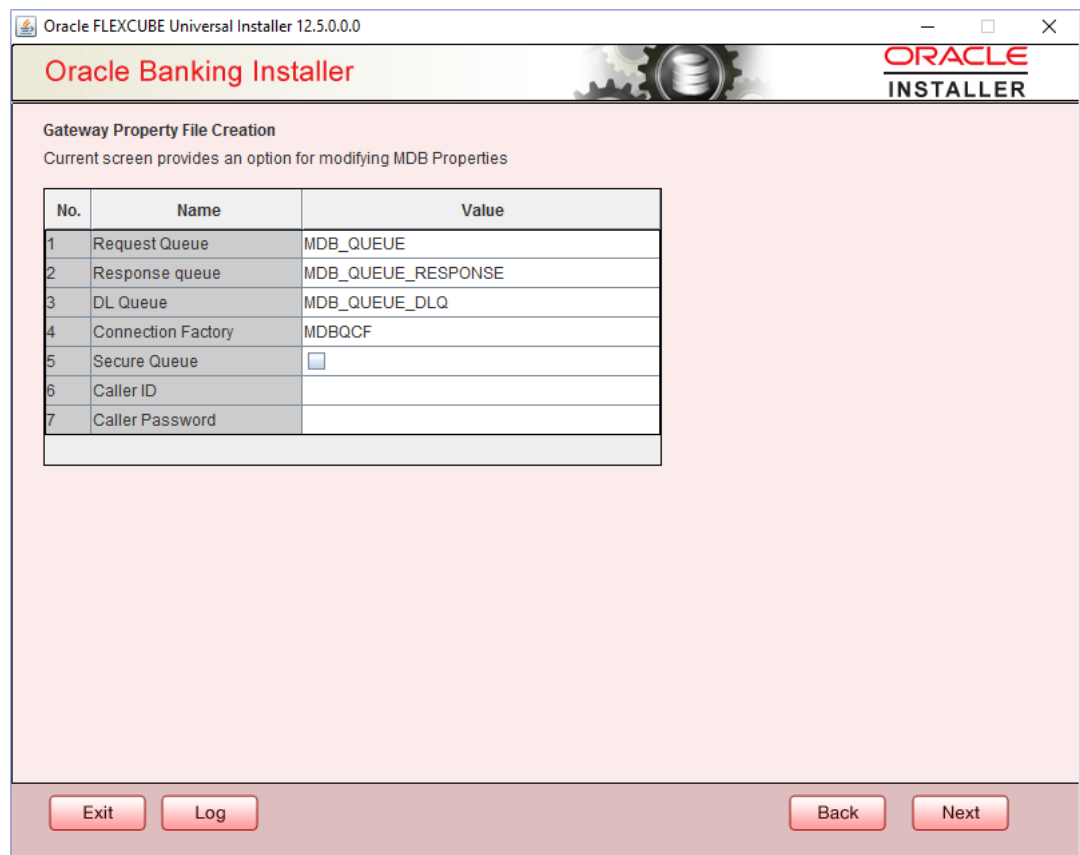
For more information on fields, refer the table below:

Field	Description
<b>XSD Path</b>	Specify the path to the XSD file. File name is not required. File separator must be '/'. There must be a '/' at the end. All the relevant XSD files must be manually copied to this location.  Example: For Windows: D:\Kernel11.1\GW_MDB\XSD\ For Linux: /Kernel11.1/GW_MDB/XSD/



Field	Description
<b>Logger File</b>	Specify the path to the ' <b>gw_mdb_logger.properties</b> ' file with the file name. The file must be manually copied to the specified location. Example: For windows: D:\Kernel11.1\GW_MDB\config\gw_mdb_logger.properties For Linux: /Kernel11.1/GW_MDB/config/gw_mdb_logger.properties
<b>Debug Path</b>	Specify the path to the folder where the application creates the logs. There must be a '/' at the end. You need to manually create the specified folder structure. Example: For windows: D:\Kernel11.1\GW_MDB\log\ For Linux: /Kernel11.1/GW_MDB/log/
<b>Security Key for Encryption</b>	Specify the security key for the Encryption, here in this case it is ' <b>Oraclefinancialsolutions</b> '.
<b>SMS Pool Name</b>	Specify SMS Pool Name, here in this case it is ' <b>jdbc/fc/devDSSMS</b> '.
<b>DataSource</b>	The JDBC data source is an object bound to JNDI tree and provides database connectivity through a pool of JDBC connections.
<b>POSS Datasource</b>	Check this box if POSS is required. If you check this box, you need to specify the POSS Datasource Name in the field below this.
<b>OPSS CSF Available</b>	Indicate whether OPSS-CSF is installed or not.  <div style="border-left: 2px solid #0070C0; padding-left: 10px; margin-left: 20px;"> <b>Note:</b> Please choose this only if Oracle Platform Security Services - Credential Store Framework (CSF) is installed as per the guidelines in the pre-requisite document. It is recommended that you install CSF for safeguarding application specific security credentials.</div>
<b>Distributed Schema</b>	If the schema is distributed, select ' <b>Yes</b> '. If the schema is not distributed, select ' <b>No</b> '.

Click '**Next**'. The following screen is displayed.



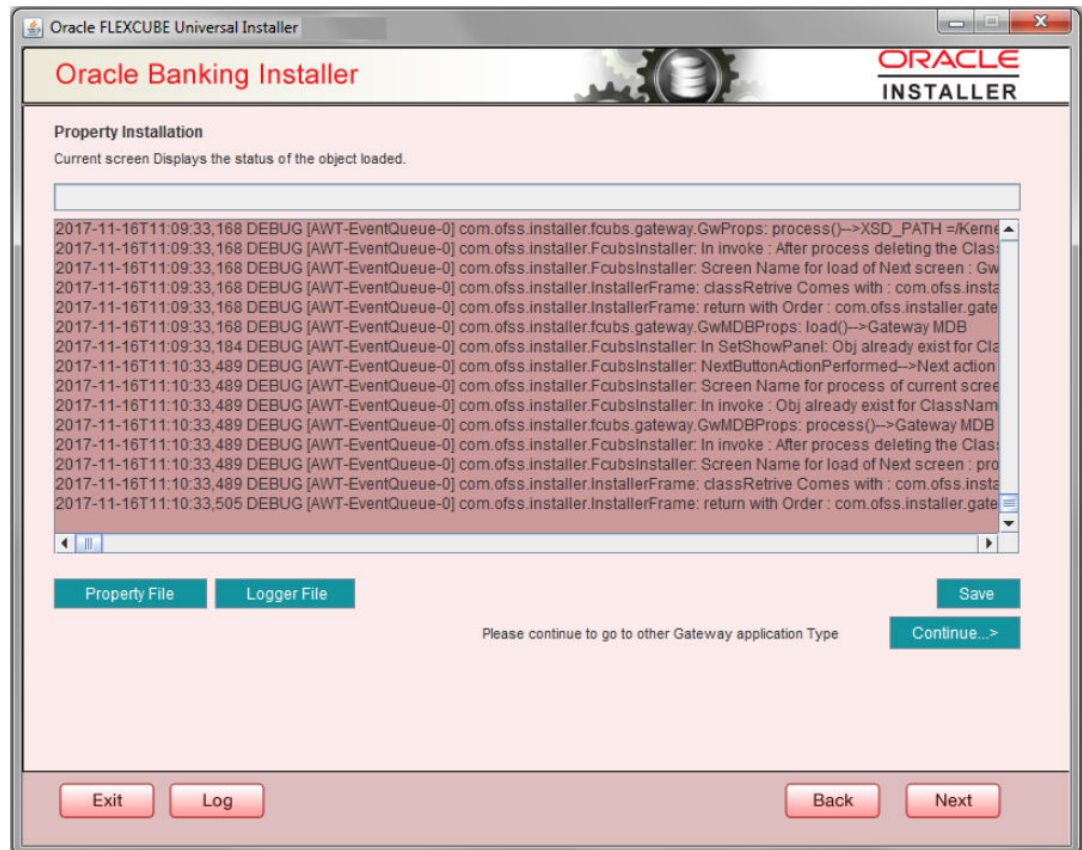
9. Specify the following details, refer the table below:

For more information on fields, refer the table below:

Field	Description
<b>Request Queue</b>	Specify the request queue. This is the point-to-point destination type used for asynchronous peer communication. Example: MDB_QUEUE
<b>Response Queue</b>	Specify the response queue name. Example: MDB_QUEUE_RESPONSE
<b>DL Queue</b>	Specify the dead letter queue name. Example: MDB_QUEUE_DLQ  <div style="border: 1px solid #0070C0; padding: 5px; background-color: #E6F2FF;"> <p> <b>Note:</b> Refer Resources_To_Be_Created.docx for creation of Queues</p> </div>
<b>Connection Factory</b>	Specify the connection configuration parameters to create connections for JMS clients. Example: MDBQCF

Field	Description
<b>Secure Queue</b>	Check this box if the Caller ID and Caller Password values have to be entered.  The Installer creates two files viz. 'gw_mdb_logger.properties' and 'GW_MDB_Prop.properties' in the path provided to save the files.

Click **'Next'**. The following screen is displayed.



The property file will be created in a temporary folder.

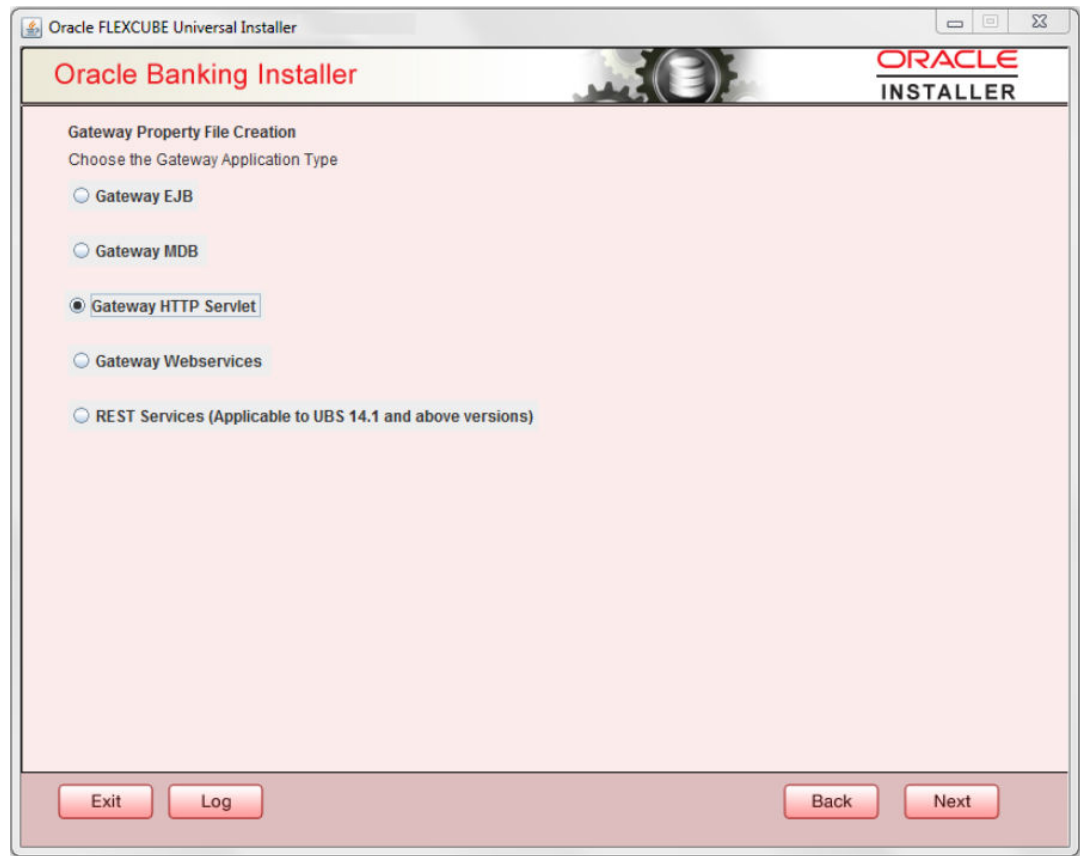
10. Click **'Property File'** to view the created property file.
11. Click **'Save'** to save the created property file in the desired location.
12. Click **'Continue'** to continue the installation process with gateway application type.
13. Click **'Next'** to navigate to the installer home screen.

For Gateway MDB EAR Building refer 'OBTF\_EAR\_Building document'.

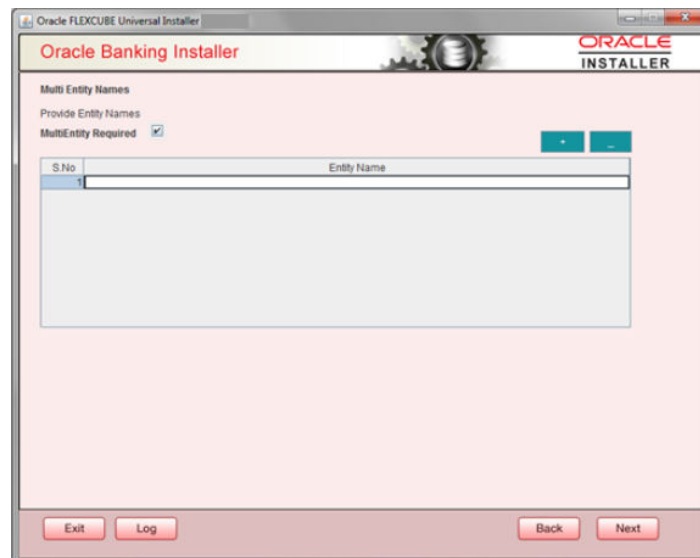
### 1.2.3 Gateway HTTP Servlet Application

Follow the steps given below:

1. Select **'Gateway HTTP Servlet'** as the application type as shown in the below screen.



2. Click '**Next**'. The following screen is displayed:  
The installer displays the '**Multi Entity**' screen.



For more information on fields, refer the table below:


Field	Description
<b>MultiEntity Required</b>	Select the multi entity check box for enabling the multi entity deployment. After selecting the multi entity option '+', '-' buttons will be enabled for capturing the entity Name.
<b>+ Button:</b>	New row will be added for capturing new entity name.
<b>- Button</b>	Select the entity name and click – button, deletion of existing entity name will be done.
<b>Entity Name</b>	Enter the entity name as single word. For example: ENTITY1

3. Click 'Next'. The following screen is displayed:

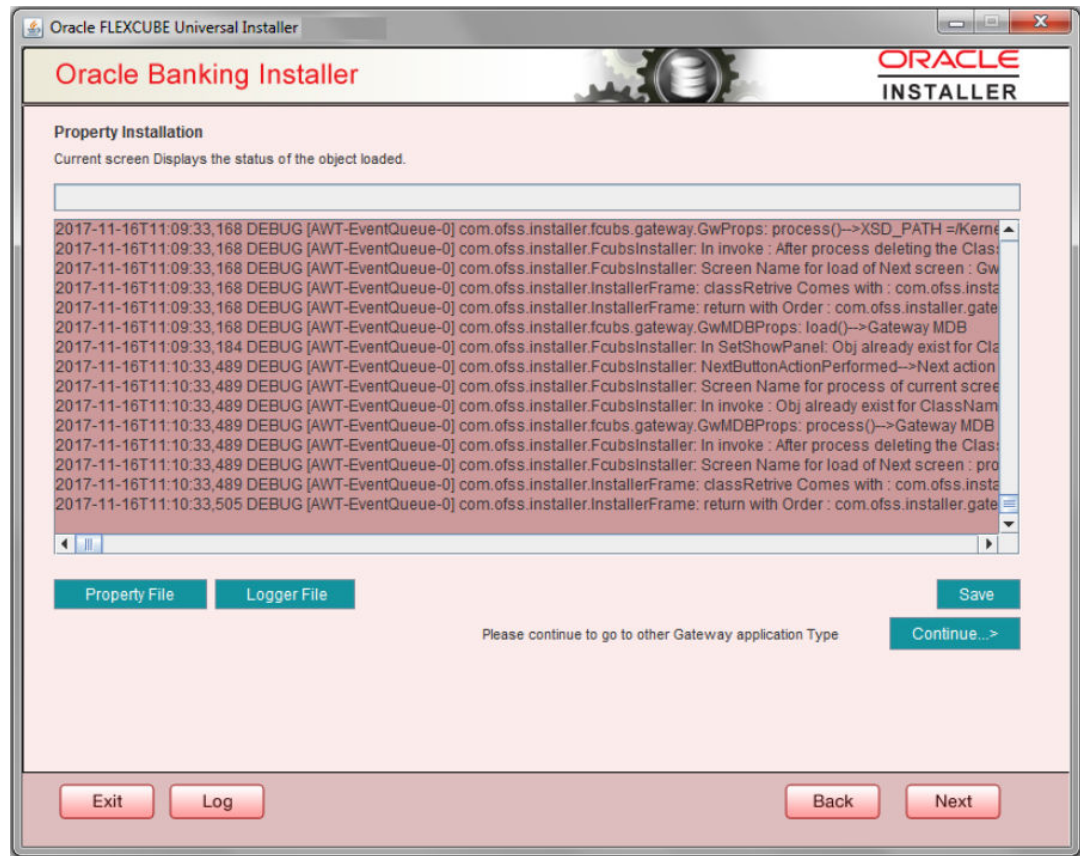
4. Specify the field details.

For more information on fields, refer the table below:

Field	Description
<b>XSD Path</b>	Specify the path to the XSD file. File name is not required. File separator must be '/'. There must be a '/' at the end. All the relevant XSD files must be manually copied to this location. Example: For Windows: D:\Kernel11.1\GW_HTTP\XSD\ For Linux: /Kernel11.1/GW_HTTP/XSD/

Field	Description
<b>Logger File</b>	Specify the path to the ' <b>gw_http_logger.properties</b> ' file with the file name. The file must be manually copied to the specified location. Example: For windows: D:\Kernel11.1\GW_HTTP\config\gw_http_logger.properties For Linux: /Kernel11.1/GW_HTTP/config/gw_http_logger.properties
<b>Debug Path</b>	Specify the path to the folder where the application creates the logs. There must be a '/' at the end. You need to manually create the specified folder structure. Example: For windows: D:\Kernel11.1\GW_HTTP\log\ For Linux: /Kernel11.1/GW_HTTP/log/
<b>Security Key for Encryption</b>	Specify the security key for the Encryption, here in this case it is ' <b>Oraclefinancialsolutions</b> '.
<b>SMS Pool Name</b>	Specify SMS Pool Name, here in this case it is ' <b>jdbc/fc/devDSSMS</b> '.
<b>DataSource</b>	The JDBC data source is an object bound to JNDI tree and provides database connectivity through a pool of JDBC connections.
<b>POSS Datasource</b>	Check this box if POSS is required. If you check this box, you need to specify the POSS Datasource Name in the field below this.
<b>OPSS CSF Available</b>	Indicate whether OPSS-CSF is installed or not.  <div style="border-left: 2px solid #0070C0; padding-left: 10px; margin-left: 20px;"> <b>Note:</b> Please choose this only if Oracle Platform Security Services - Credential Store Framework (CSF) is installed as per the guidelines in the pre-requisite document. It is recommended that you install CSF for safeguarding application specific security credentials.</div>
<b>Distributed Schema</b>	If the schema is distributed, select ' <b>Yes</b> '. If the schema is not distributed, select ' <b>No</b> '. The Installer creates two files viz. 'gw_http_logger.properties' and 'GW_HTTP_Prop.properties' in the path provided to save the files

Click '**Next**'. The following screen is displayed.



The property file will be created in a temporary folder.

5. Click '**Property File**' to view the created property file.
6. Click '**Save**' to save the created property file in the desired location.
7. Click '**Continue**' to continue the installation process with gateway application type.
8. Click '**Next**' to navigate to the installer home screen.

The property file will be created in the specified folder.

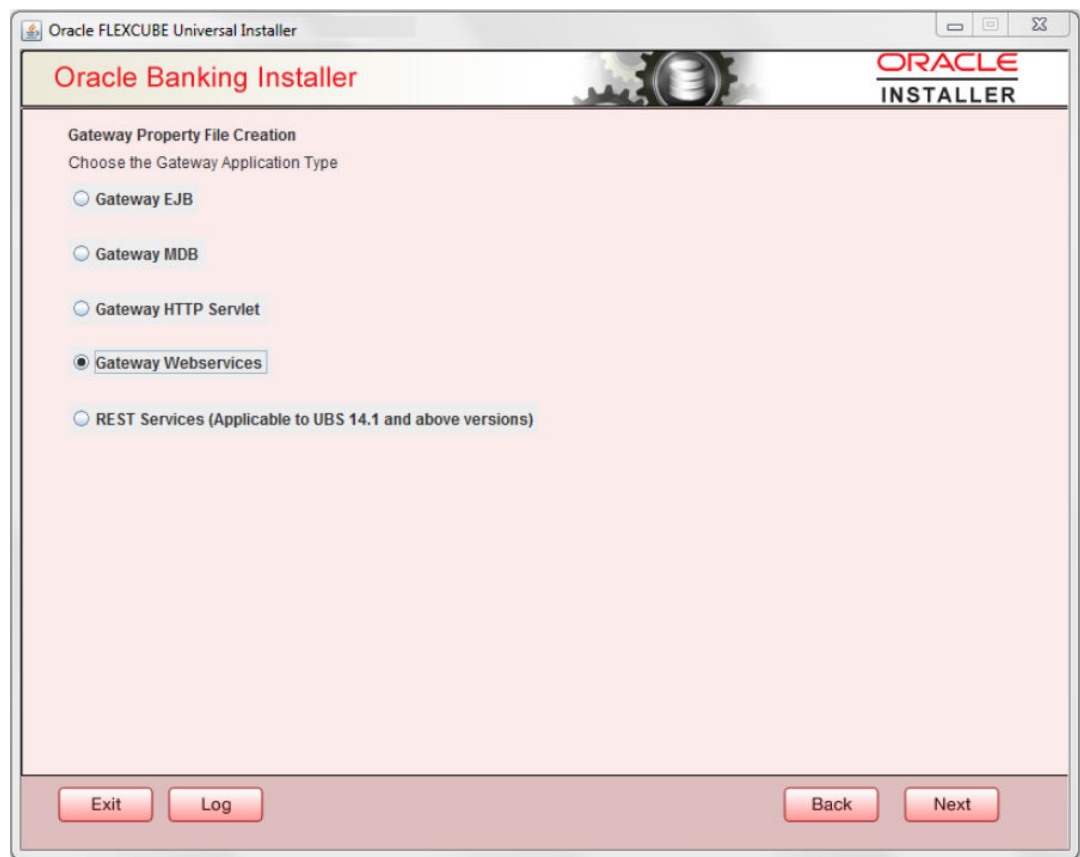


For Gateway HTTP EAR Building refer 'OBTF\_EAR\_Building document'.

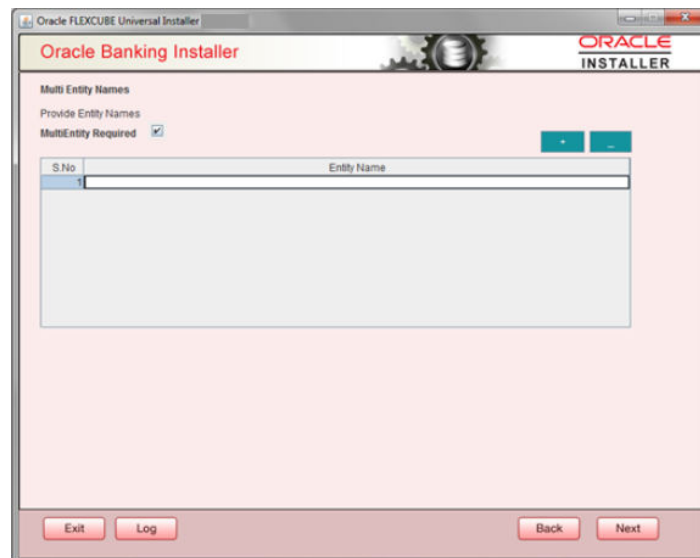
## 1.2.4 Gateway Web Service Application

Follow the steps given below:

1. Select '**Gateway Web Service**' as the application type as shown in the below Screen.



2. Click '**Next**'. The following screen is displayed.  
The installer displays the '**Multi Entity**' screen.

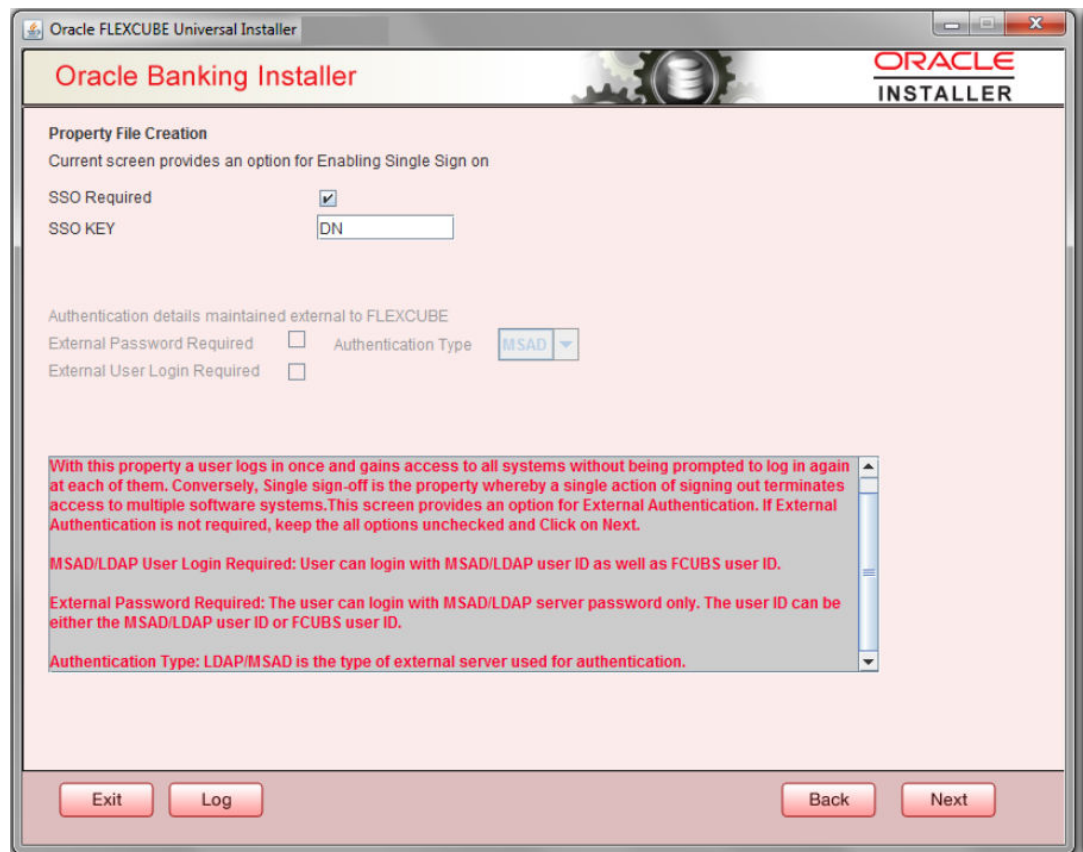


For more information on fields, refer the table below:



Field	Description
<b>MultiEntity Required</b>	Select the multi entity check box for enabling the multi entity deployment. After selecting the multi entity option '+', '-' buttons will be enabled for capturing the entity Name.
<b>+ Button:</b>	New row will be added for capturing new entity name.
<b>- Button</b>	Select the entity name and click – button, deletion of existing entity name will be done.
<b>Entity Name</b>	Enter the entity name as single word. For example: ENTITY1



3. On the **Multi Entity Names** screen, click **'Next'**. The following screen is displayed:

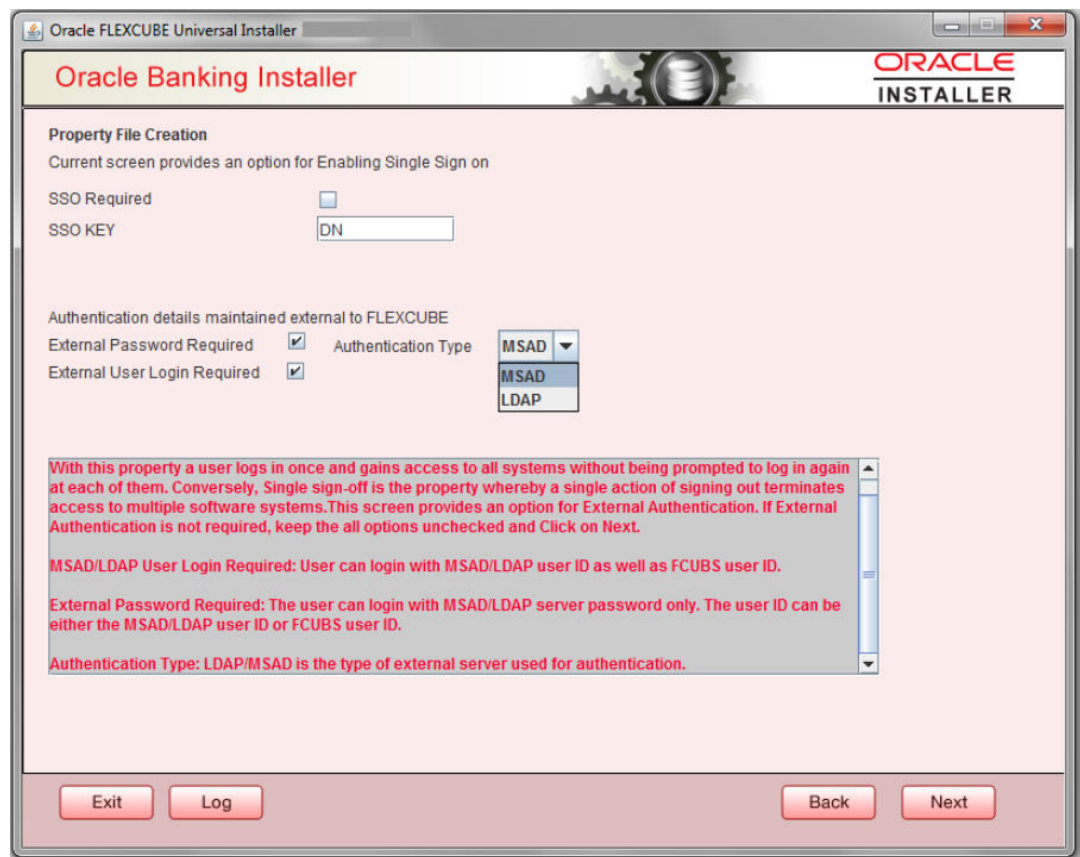


4. On the **Property File Creation** screen, specify the field details.

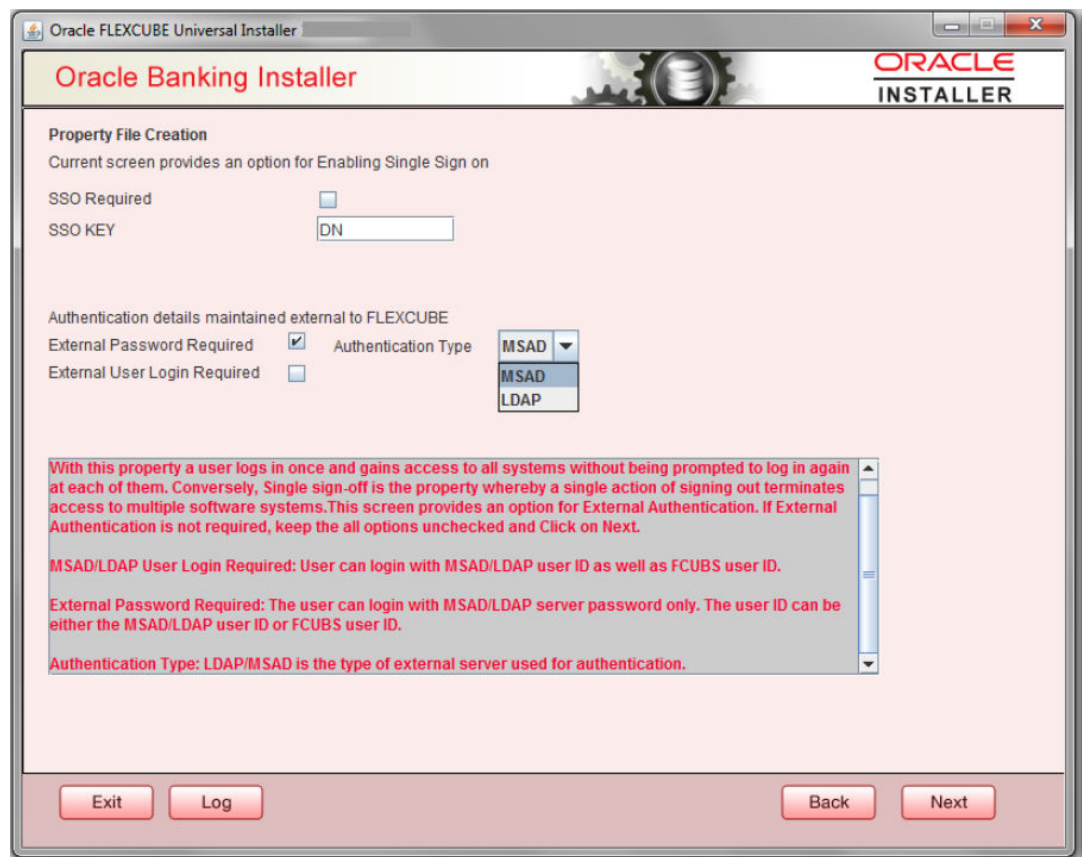
For more information on fields, refer the table below:

Field	Description
<b>SSO Required</b>	Check this box to enable single sign-on (SSO). If you check this box, you need to specify the SSO Key.

Field	Description
<b>SSO Key</b>	<p>Specify the SSO key. If you have checked the box '<b>SSO Required</b>', it is mandatory to specify the SSO key.</p> <p>If you have checked the box '<b>SSO Required</b>', then the Installer will skip the following two screens and will directly navigate to the Modifying the Gateway properties Screen.</p> <p>If you have not checked the box '<b>SSO Required</b>', then click '<b>Next</b>'. The following screen is displayed.</p>
<b>External User Login Required</b>	<p>Check this box to enable user login using MSAD/LDAP user Id.</p> <div data-bbox="737 506 1468 737" style="border: 1px solid #ccc; background-color: #e6f2ff; padding: 10px;"> <p> <b>Note:</b></p> <p>If you check this box, the user can login with MSAD/LDAP server user Id as well as FCUBS user Id. If you do not check this box, the user can login using FCUBS user Id only.</p> </div>
<b>External Password Required</b>	<p>Check this box to allow user login using MSAD/LDAP password irrespective of the user Id.</p> <div data-bbox="737 873 1468 1230" style="border: 1px solid #ccc; background-color: #e6f2ff; padding: 10px;"> <p> <b>Note:</b></p> <p>If you check this box, the user can login using MSAD/LDAP server password only. The user Id can be one of the following:</p> <ul style="list-style-type: none"> <li>• MSAD/LDAP user Id</li> <li>• OBTFM user Id</li> </ul> <p>If you do not check this box, then the installer skips the following screen and directly navigates to the Modifying Gateway Properties screen.</p> </div>
<b>Authentication Type</b>	<p>Select the authentication type. This is the type of external server that is used. You can select one of the following options:</p> <ul style="list-style-type: none"> <li>• MSAD (Microsoft Active Directory)</li> <li>• LDAP (Lightweight Directory Access Protocol)</li> </ul> <p>By default, 'MSAD' is selected; however, you can change it.</p>

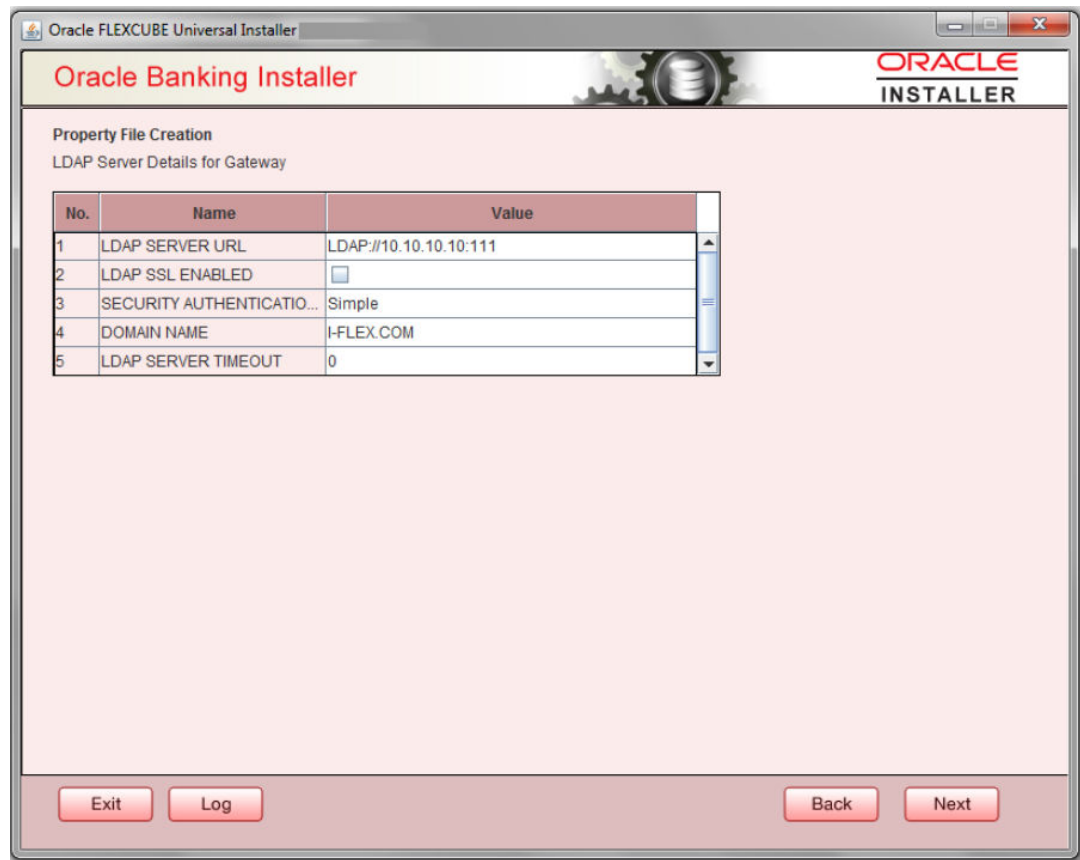


5. Click **Next**. The **Property File Creation** screen displays.




The field '**Authentication Type**' is enabled if one of the above check boxes is checked:

6. If you check the box, then the installer navigates to the following screen on clicking '**Next**' button.



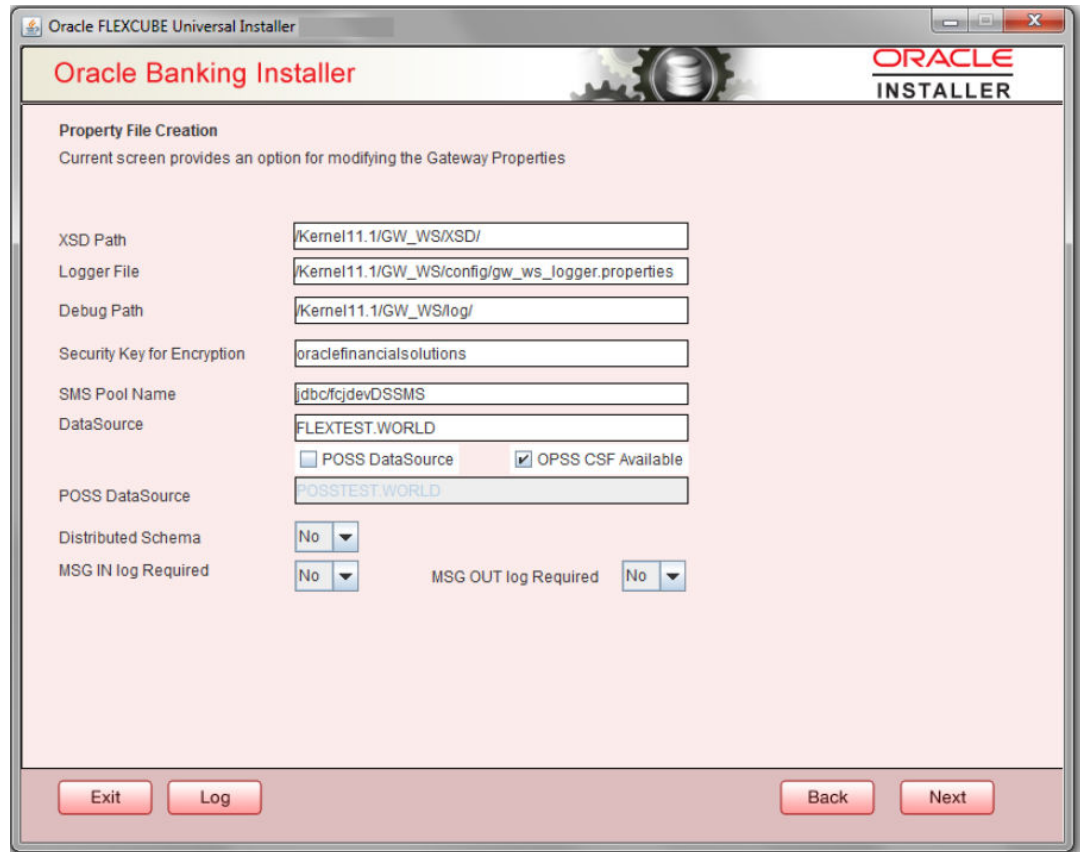
7. Specify the LDAP server details.

For more information on fields, refer the table below:

Field	Description
<b>LDAP Server URL</b>	Specify the URL to access the LDAP server where the external user ID and password are maintained.
<b>LDAP SSL Enabled</b>	Check this box if the LDAP server is SSL enabled. If you check this box, then you need to specify the SSL port also in the field <b>LDAP SERVER URL</b> . By default, this check box is unchecked. However, you can change this.
<b>Security Authentication Type</b>	Depending on the authentication mechanism supported by the LDAP server, select one of the following: <ul style="list-style-type: none"> <li>• Simple</li> <li>• Strong</li> </ul> <div style="border: 1px solid #0070C0; padding: 5px; margin-top: 10px;"> <p> <b>Note:</b></p> <ul style="list-style-type: none"> <li>• Different servers support different authentication mechanisms.</li> <li>• By default, the security authentication type is <b>'Simple'</b>; however, you can change this.</li> </ul> </div>
<b>Domain Name</b>	Specify the domain name.

Field	Description
<b>LDAP Server Timeout</b>	Specify the LDAP server timeout in milliseconds. This must be a positive integer value. For example you can specify 1000, 10000 or 5000. If it is zero or less, it indicates that no read timeout is specified. Then the wait for the response infinite until it is received. By default, the LDAP server timeout is zero; however, you can change this.


8. Click **'Next'**. The following screen is displayed:



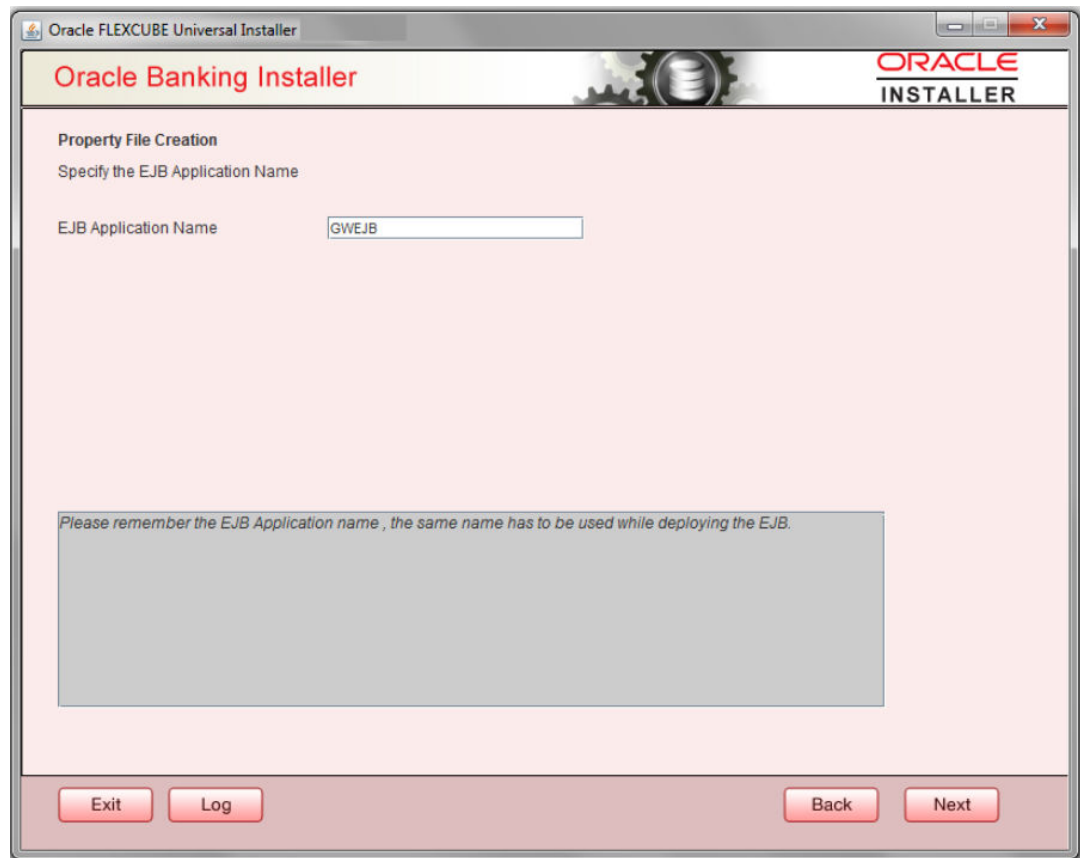
9. Specify the fields.

For more information on fields, refer the table below:

Field	Description
<b>XSD Path</b>	Specify the path to the XSD file. File name is not required. File separator must be '/'. There must be a '/' at the end. All the relevant XSD files must be manually copied to this location. Example: For Windows: D:\Kernel11.1\GW_WS\XSD\ For Linux: /Kernel11.1/GW_WS/XSD/

Field	Description
<b>Logger File</b>	Specify the path to the ' <b>gw_ws_logger.properties</b> ' file with the file name. The file must be manually copied to the specified location. Example: For windows: D:\Kernel11.1\GW_WS\config\gw_ws_logger.properties For Linux: /Kernel11.1/GW_WS/config/gw_ws_logger.properties
<b>Debug Path</b>	Specify the path to the folder where the application creates the logs. There must be a '/' at the end. You need to manually create the specified folder structure. Example: For windows: D:\Kernel11.1\GW_WS\log\ For Linux: /Kernel11.1/GW_WS/log/
<b>Security Key for Encryption</b>	Specify the security key for the Encryption, here in this case it is ' <b>Oraclefinancialsolutions</b> '.
<b>SMS Pool Name</b>	Specify SMS Pool Name, here in this case it is ' <b>jdbc/fcjdevDSSMS</b> '.
<b>DataSource</b>	The JDBC data source is an object bound to JNDI tree and provides database connectivity through a pool of JDBC connections.
<b>POSS Datasource</b>	Check this box if POSS is required. If you check this box, you need to specify the POSS Datasource Name in the field below this.
<b>OPSS CSF Available</b>	Indicate whether OPSS-CSF is installed or not.  <div style="border-left: 2px solid #0070C0; padding-left: 10px; margin-left: 20px;"> <b>Note:</b>  Please choose this only if Oracle Platform Security Services - Credential Store Framework (CSF) is installed as per the guidelines in the pre-requisite document. It is recommended that you install CSF for safeguarding application specific security credentials.</div>
<b>Distributed Schema</b>	If the schema is distributed, select ' <b>Yes</b> '. If the schema is not distributed, select ' <b>No</b> '.
<b>MSG IN LOG Required</b>	Choose Yes/No from drop down box.
<b>MSG OUT LOG Required</b>	Choose Yes/No from drop down box.

- Click '**Next**'. The following screen is displayed.



11. Specify the field details.

For more information on fields, refer the table below:

**Table 1-6 Property File Creation**

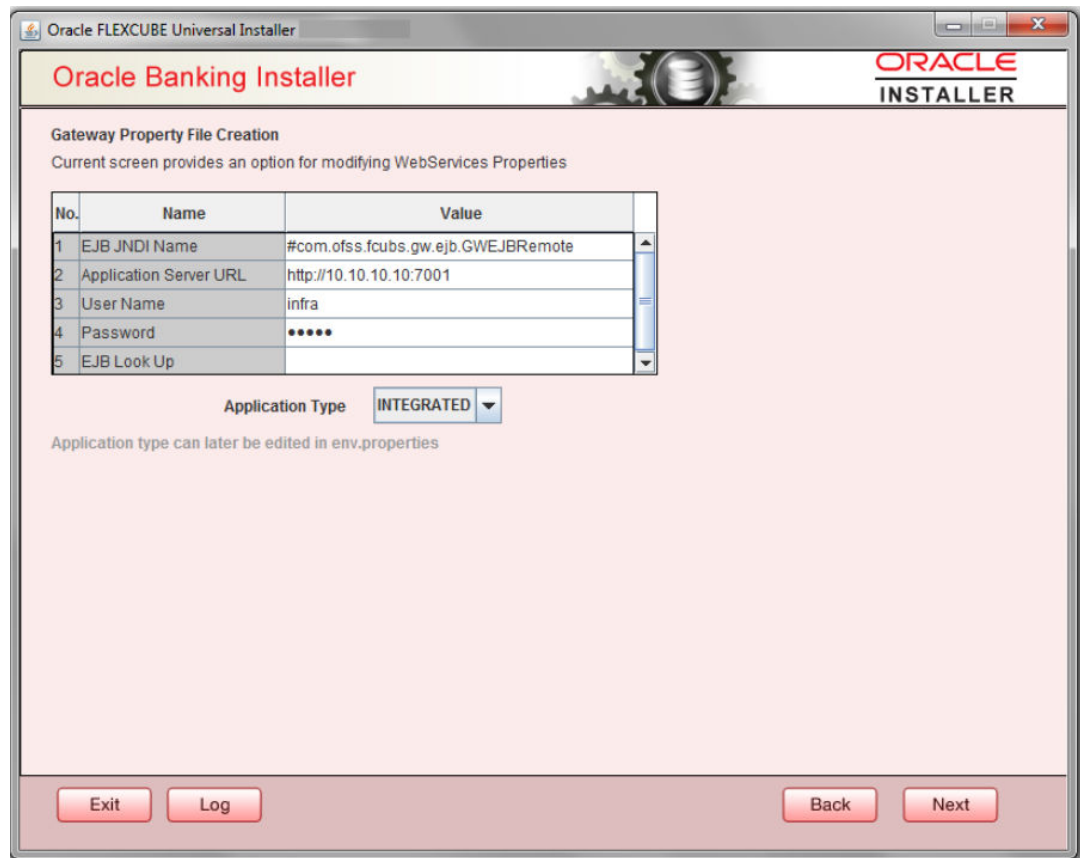
---

<b>EJB Application Name</b>	Specify the name of the EJB application deployed.E.g.: GWEJB.
-----------------------------	---

---

12. Click 'Next'. The following screen is displayed.





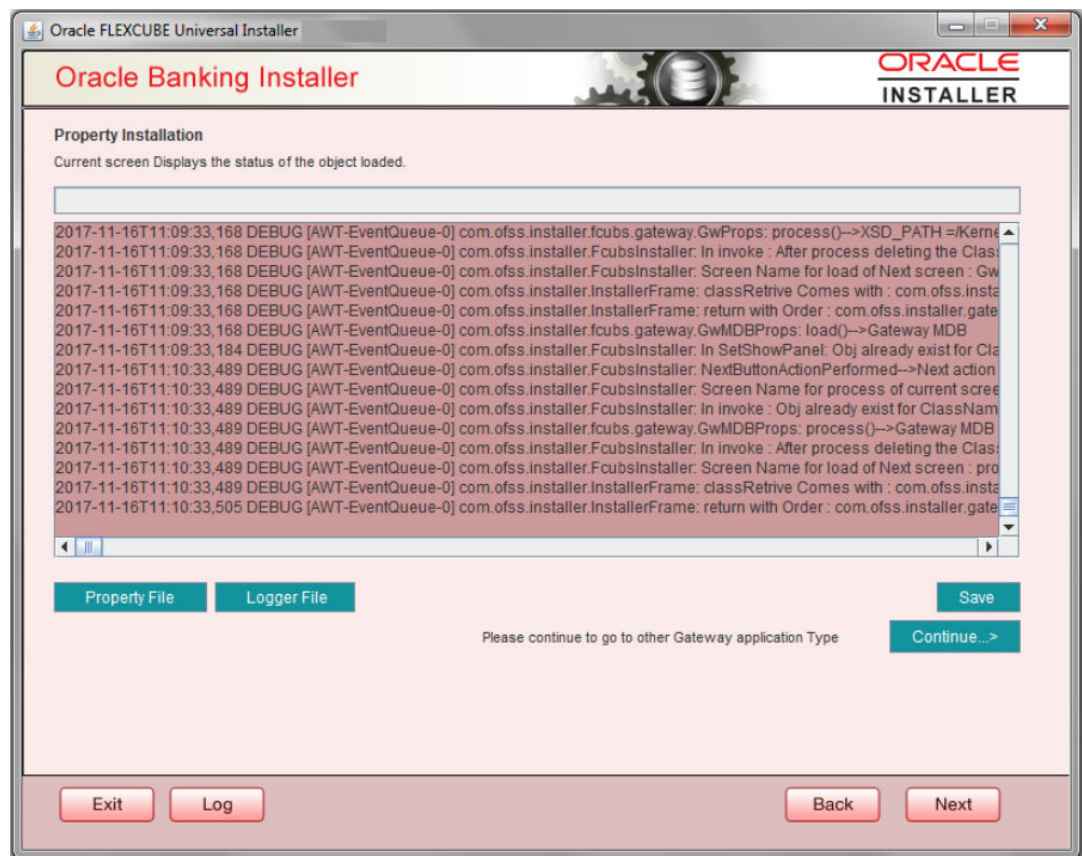
13. Specify the filed details:

For more information on fields, refer the table below:

Field	Description
<b>EJB JNDI Name</b>	If you build the EJB application with GWEJB name, this will create the name with which the EJB EAR file is built. If you select EJB Call Type as REMOTE, this will create '<EJB_APPLICATION_NAME>#com.ofss.fcubs.gw.ejb.GWEJBRemote' in 'GW_WS_Prop.properties' file Example: Weblogic/Websphere : GWEJB #com.ofss.fcubs.gw.ejb.GWEJBRemote
<b>Application Server URL</b>	Specify the URL of the application server where the webservice application is hosted. Example: Weblogic: t3://10.10.10.10:7001 Or Websphere: iiop://10.10.10.10:2815
<b>User Name</b>	Specify the user name to access the application server where the EJB application is deployed. Example: infra
<b>Password</b>	Specify the password for the above user name.
<b>EJB Look Up</b>	Specify the EJB look up type from the drop down-list. The options are LOCAL/REMOTE

Field	Description
<b>Application Type</b>	<p>Specify the Application Type from the drop down list:</p> <ul style="list-style-type: none"> <li>If the Application type is '<b>INTEGRATED</b>' then the EJB look up type should be select as '<b>LOCAL</b>'</li> <li>If the Application type is '<b>INDIVIDUAL</b>' then the EJB look up type should be select as '<b>REMOTE</b>' and EJB should configure in any server. ('<b>REMOTE</b>' only works with combination of EJB &amp; GWWS )</li> <li>The Installer creates two files viz. 'gw_ws_logger.properties' and 'GW_WS_Prop.properties' in the path provided to save the files.</li> </ul>

Click '**Next**'. The following screen is displayed.



The property file will be created in a temporary folder.

14. Click '**Property File**' to view the created property file.
15. Click '**Save**' to the save the created property file in desire location.
16. Click '**Continue**' to continue the installation process with gateway application type.
17. Click '**Next**' to navigate to the installer home screen.

The property file will be created in the specified folder.

18. If Application Server is "**Websphere**" and EJB Look Up is "**REMOTE**", change below entry in GW\_WS\_Prop.properties:

EJB\_CTX\_FACTORY=weblogic.jndi.WLInitialContextFactory

to

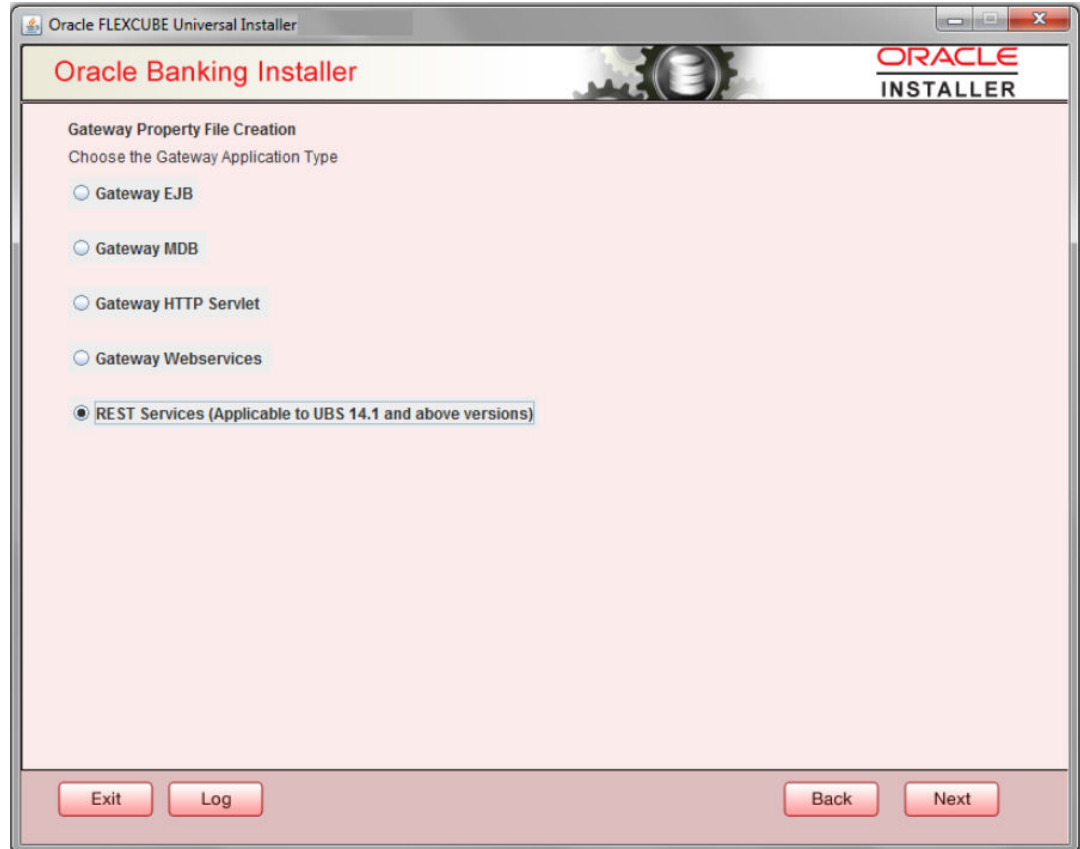
EJB\_CTX\_FACTORY=com.ibm.websphere.naming.WsnInitialContextFactory

For Gateway WS EAR Building refer 'OBTF\_EAR\_Building document'

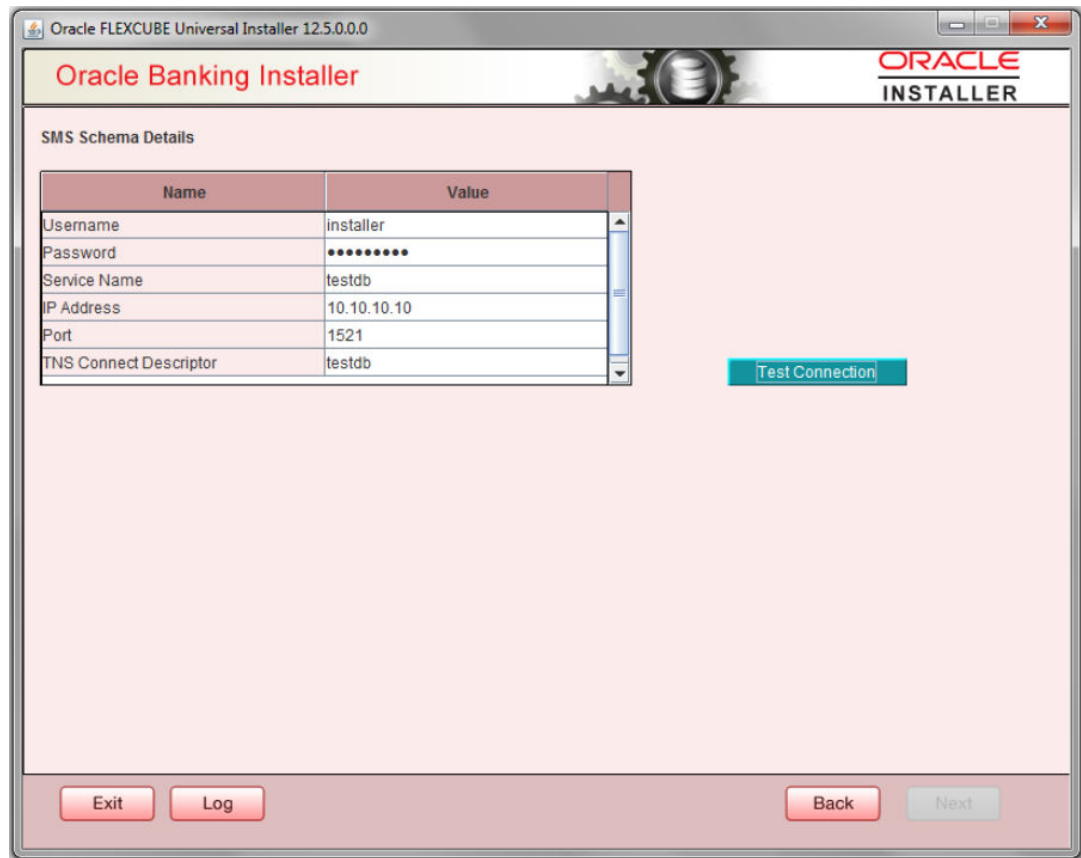
## 1.2.5 REST Services Application

Follow the steps given below:

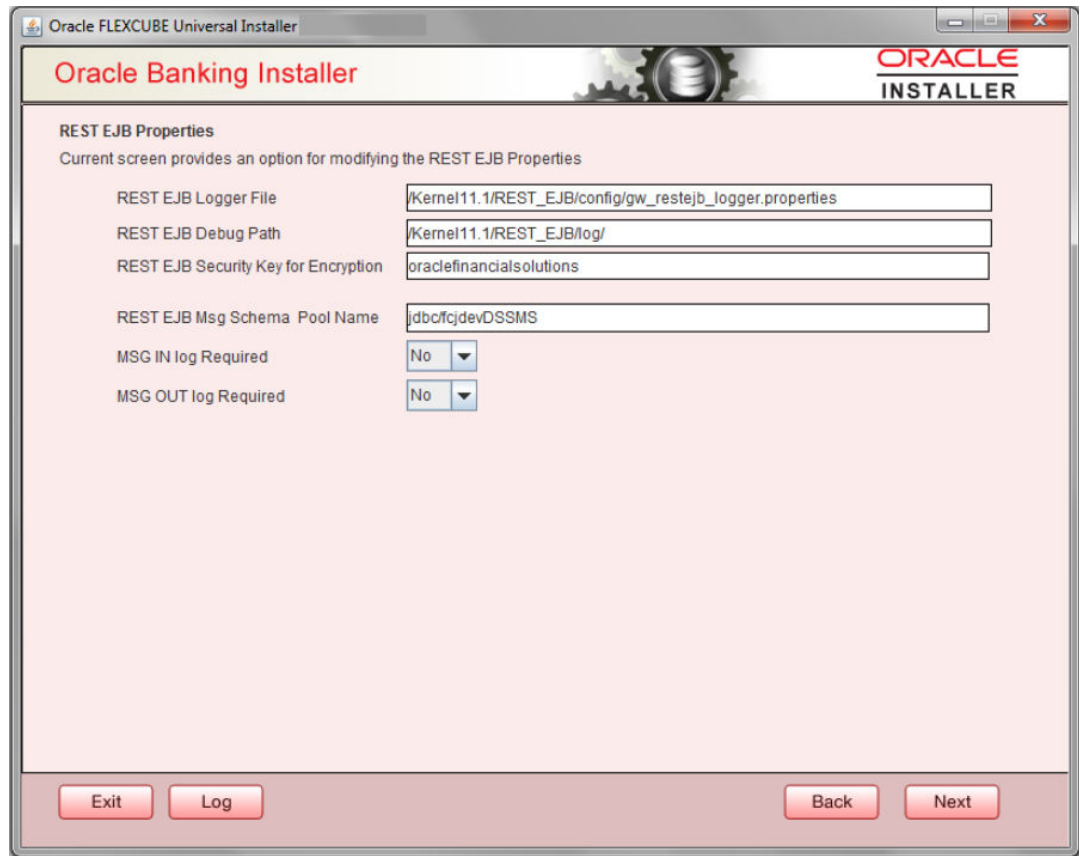
1. Select '**Rest Services**' as the application type as shown in the below Screen.



2. Click '**Next**'. The following screen is displayed to capture Schema details. Enter valid username, password, IP Address, port and TNS descriptor and click on "**Test Connection**" button.



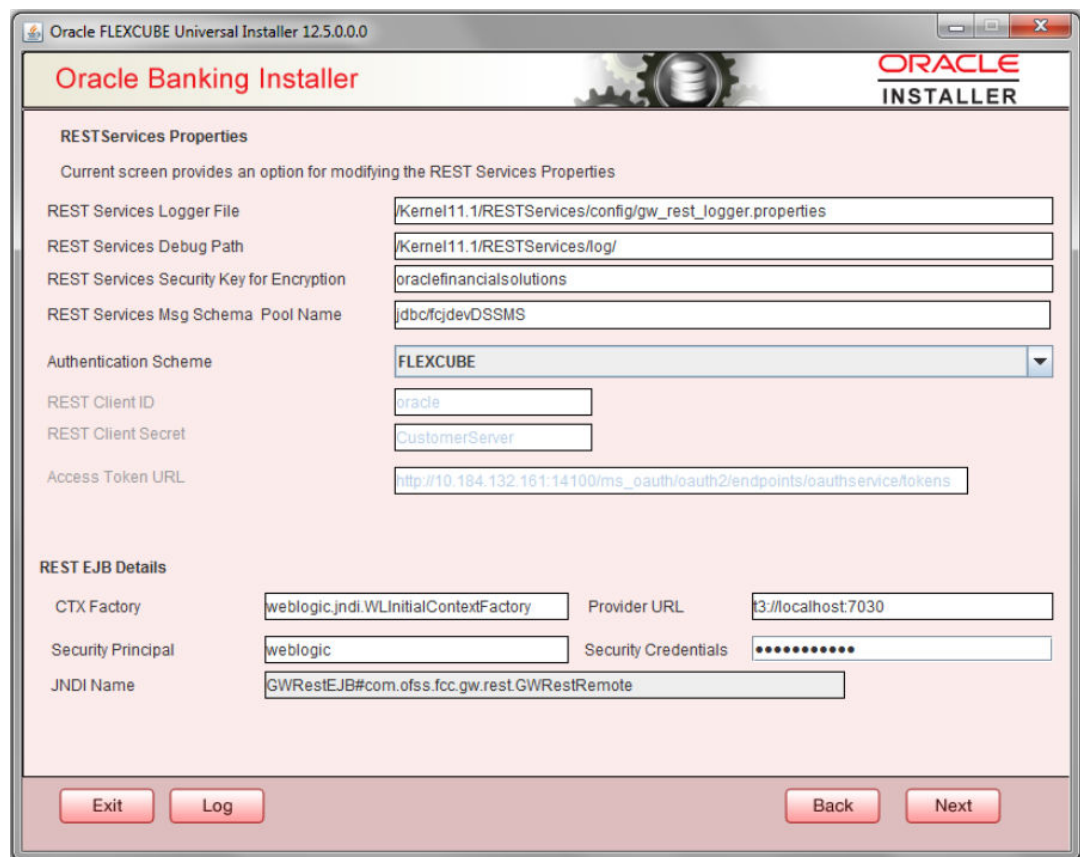
3. Successful test connection will enable Next button. Click on it to proceed to next page.



In above page, Enter the below REST EJB details.  
For more information on fields, refer the table below:

Field	Description
<b>REST EJB Logger File</b>	Enter logger property file path.
<b>REST EJB Debug Path</b>	Enter path where debugs are to be written.
<b>REST EJB Security Key for Encryption</b>	Specify the security key for the Encryption. In this case it is 'oraclefinancialsolutions'.
<b>REST EJB Msg Schema Pool Name</b>	Enter valid pool name. by default it is : jdbc/fcjdevDSSMS
<b>MSG IN LOG Required</b>	Choose Yes/No from drop down box.
<b>MSG OUT LOG Required</b>	Choose Yes/No from drop down box

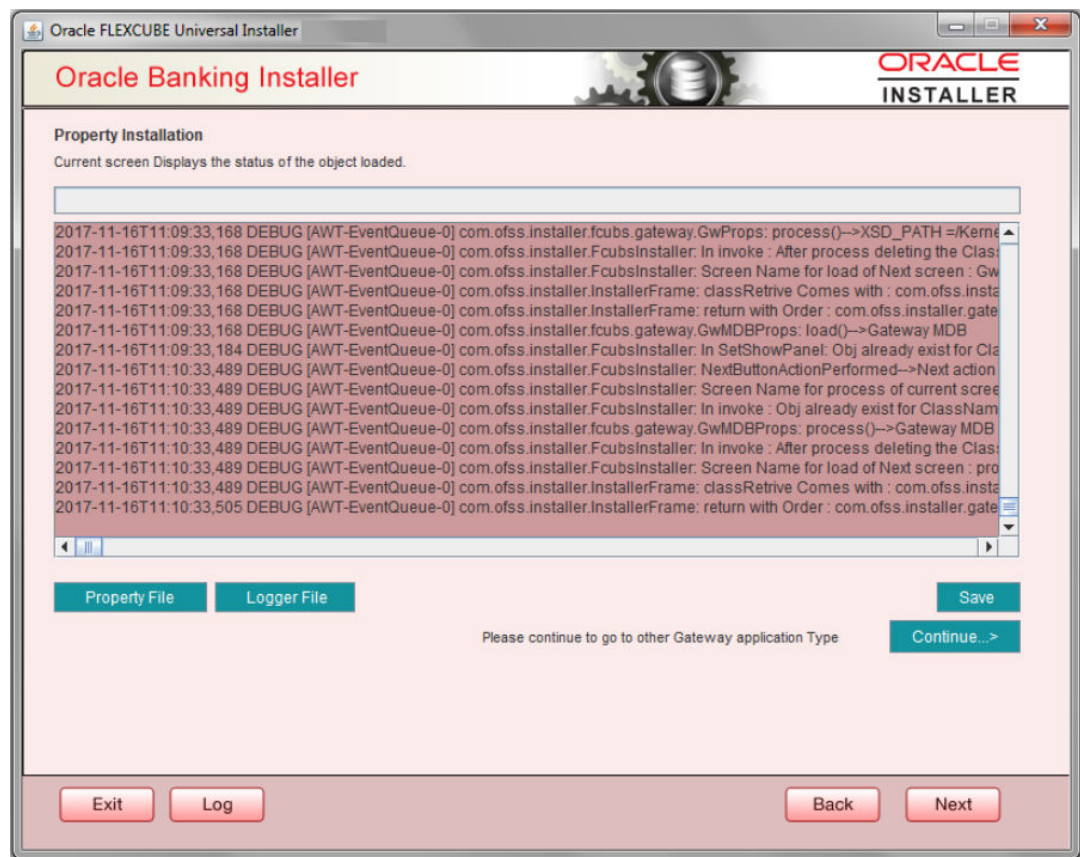
4. Click on 'Next' Button to enter REST Services information.



For more information on fields, refer the table below:

Field	Description
<b>REST Services Logger File</b>	Enter logger property file path.
<b>REST Services Debug Path</b>	Enter path where debugs are to be written.
<b>REST Services Security Key for Encryption</b>	Specify the security key for the Encryption. In this case it is 'oraclefinancialsolutions'.
<b>REST Services Msg Schema Pool Name</b>	Enter valid pool name. by default it is : jdbc/fc/devDSSMS
<b>Authentication Scheme</b>	<p>OAUTH and FLEXCUBE are two types of Authentication Schemes available.</p> <p>Please note, for FLEXCUBE authentication Scheme, REST Client ID, REST Client Secret, Access Token URL are disabled.</p> <p>The same has to be entered if AOUTH is selected.</p>
<b>CTX factory</b>	Provide valid CTX factory information.
<b>Provider URL</b>	Enter URL with valid port number.
<b>Security Principal</b>	Provide Security principal username.
<b>Security Credentials</b>	Provide Security principal password.
<b>JNDI Name</b>	JNDI Name will be defaulted based on application server selected.

Click on **Next** button.



5. Click '**Property File**' to view the created property file.
6. Click '**Save**' to save the created property file in the desired location.
7. Click '**Continue**' to continue the installation process with gateway application type.
8. Click '**Next**' to navigate to the installer home screen.

The property file will be created in a temporary folder.

For Gateway MDB EAR Building refer 'OBTF\_EAR\_Building document'.

# Glossary



# Index