

Oracle Banking Trade Finance

Standalone Scheduler Property File Creation



Release 14.7.3.0.0

F94036-01

February 2024



Oracle Banking Trade Finance Standalone Scheduler Property File Creation, Release 14.7.3.0.0

F94036-01

Copyright © 2007, 2024, Oracle and/or its affiliates.

Primary Authors: (primary author), (primary author)

Contributing Authors: (contributing author), (contributing author)

Contributors: (contributor), (contributor)

This software and related documentation are provided under a license agreement containing restrictions on use and disclosure and are protected by intellectual property laws. Except as expressly permitted in your license agreement or allowed by law, you may not use, copy, reproduce, translate, broadcast, modify, license, transmit, distribute, exhibit, perform, publish, or display any part, in any form, or by any means. Reverse engineering, disassembly, or decompilation of this software, unless required by law for interoperability, is prohibited.

The information contained herein is subject to change without notice and is not warranted to be error-free. If you find any errors, please report them to us in writing.

If this is software, software documentation, data (as defined in the Federal Acquisition Regulation), or related documentation that is delivered to the U.S. Government or anyone licensing it on behalf of the U.S. Government, then the following notice is applicable:

U.S. GOVERNMENT END USERS: Oracle programs (including any operating system, integrated software, any programs embedded, installed, or activated on delivered hardware, and modifications of such programs) and Oracle computer documentation or other Oracle data delivered to or accessed by U.S. Government end users are "commercial computer software," "commercial computer software documentation," or "limited rights data" pursuant to the applicable Federal Acquisition Regulation and agency-specific supplemental regulations. As such, the use, reproduction, duplication, release, display, disclosure, modification, preparation of derivative works, and/or adaptation of i) Oracle programs (including any operating system, integrated software, any programs embedded, installed, or activated on delivered hardware, and modifications of such programs), ii) Oracle computer documentation and/or iii) other Oracle data, is subject to the rights and limitations specified in the license contained in the applicable contract. The terms governing the U.S. Government's use of Oracle cloud services are defined by the applicable contract for such services. No other rights are granted to the U.S. Government.

This software or hardware is developed for general use in a variety of information management applications. It is not developed or intended for use in any inherently dangerous applications, including applications that may create a risk of personal injury. If you use this software or hardware in dangerous applications, then you shall be responsible to take all appropriate fail-safe, backup, redundancy, and other measures to ensure its safe use. Oracle Corporation and its affiliates disclaim any liability for any damages caused by use of this software or hardware in dangerous applications.

Oracle®, Java, MySQL, and NetSuite are registered trademarks of Oracle and/or its affiliates. Other names may be trademarks of their respective owners.

Intel and Intel Inside are trademarks or registered trademarks of Intel Corporation. All SPARC trademarks are used under license and are trademarks or registered trademarks of SPARC International, Inc. AMD, Epyc, and the AMD logo are trademarks or registered trademarks of Advanced Micro Devices. UNIX is a registered trademark of The Open Group.

This software or hardware and documentation may provide access to or information about content, products, and services from third parties. Oracle Corporation and its affiliates are not responsible for and expressly disclaim all warranties of any kind with respect to third-party content, products, and services unless otherwise set forth in an applicable agreement between you and Oracle. Oracle Corporation and its affiliates will not be responsible for any loss, costs, or damages incurred due to your access to or use of third-party content, products, or services, except as set forth in an applicable agreement between you and Oracle.

For information about Oracle's commitment to accessibility, visit the Oracle Accessibility Program website at <http://www.oracle.com/pls/topic/lookup?ctx=acc&id=docacc>.

Contents

1 Creating Property File for Standalone scheduler

1.1	Introduction	1-1
1.2	Creating Property File	1-1
1.2.1	Setting General Properties	1-5
1.2.2	Single Sign on	1-6
1.2.3	SMTPS Details	1-7
1.2.4	Configuring Scheduler Queues	1-8
1.2.5	Setting EMS FTP/FTPS Properties	1-12
1.2.6	Setting BIP/GI Upload Queue	1-14
1.2.7	Setting Report Properties	1-15
1.2.8	Saving Property File	1-17

1

Creating Property File for Standalone scheduler

- [Introduction](#)
- [Creating Property File](#)

1.1 Introduction

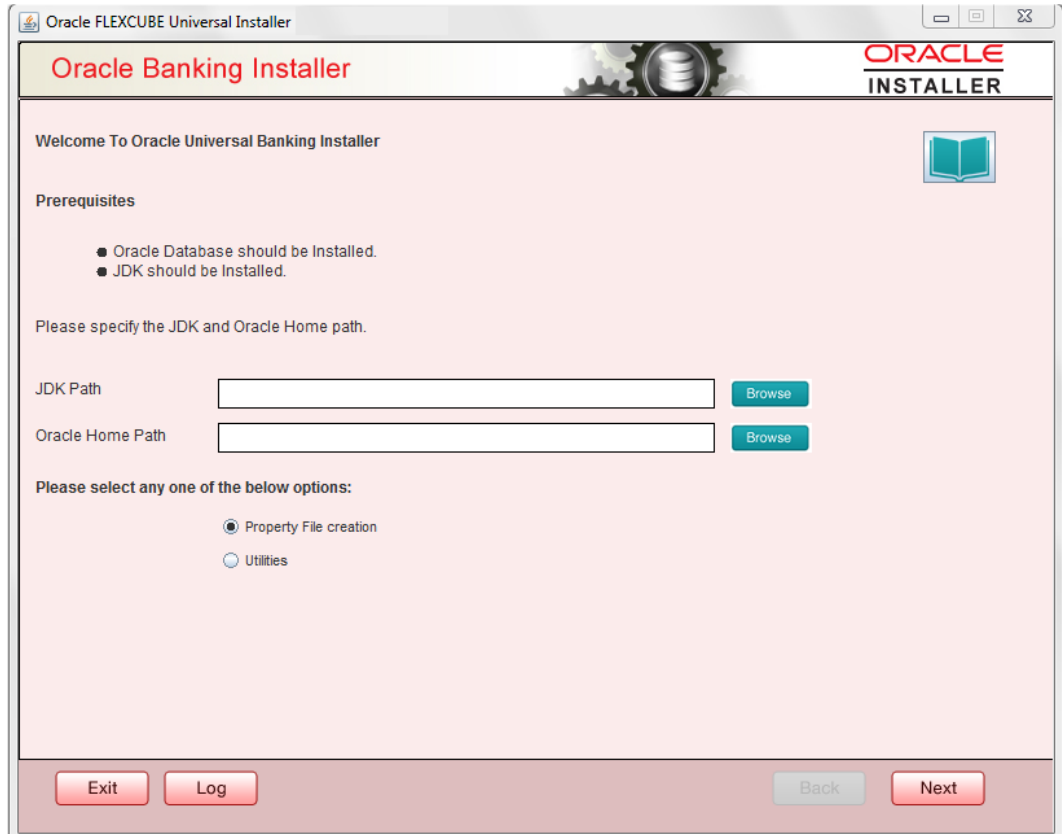
This chapter explains the steps to create property file for Standalone Scheduler.

1.2 Creating Property File

To create the property file for Oracle Banking Trade Finance Standalone Scheduler, follow the steps given below:

(Optional) Enter task prerequisites here.

1. Launch Oracle Banking Trade Finance Universal Banking Solution Installer. Select **'Property File Creation'** option and Click **'Next'** button.



2. Select '**Scheduler**' component and Oracle Banking Trade Finance for Trade Finance Property file creation.

In case of co-deployment one or more Product Processors can be included with Trade Finance.

- a. Oracle Financial Universal Banking product processor contains Rest of FLEXCUBE other than Payments, ELCM and OBCL etc.
- b. Oracle FLEXCUBE Enterprise Limits and Collateral Management (ELCM) has three types .They are Embedded, CO-Deploy and Standalone (ELCM Adapter). Please choose proper option. Oracle FLEXCUBE Enterprise Limits and Collateral Managements can be selected as individual application or along with Oracle Financial Universal Banking. Also ELCM Adapter required checkbox is available.
- c. Oracle Banking payments can be selected.
- d. Oracle Banking Corporate Lending can be selected.
- e. Open Development Tool (ODT) can be selected to install ODT, that allows end user to design ODT screens.
- f. Oracle Banking Treasury can be selected.

Oracle FLEXCUBE Universal Installer 12.5.0.0.0

Oracle Banking Installer ORACLE INSTALLER

Select one of the Components

Load Existing Property File

INFRA Scheduler Gateway Switch Interface Installation

Select Oracle Product Processors

Oracle FLEXCUBE Universal Banking

Oracle FLEXCUBE Enterprise Limits and Collateral Management (CO-DEPLOY)

Oracle Banking Payments

Oracle Banking Corporate Lending Open Development Tool

Oracle Banking Treasury

Oracle Banking Trade Finance

Select Plugins to be Installed

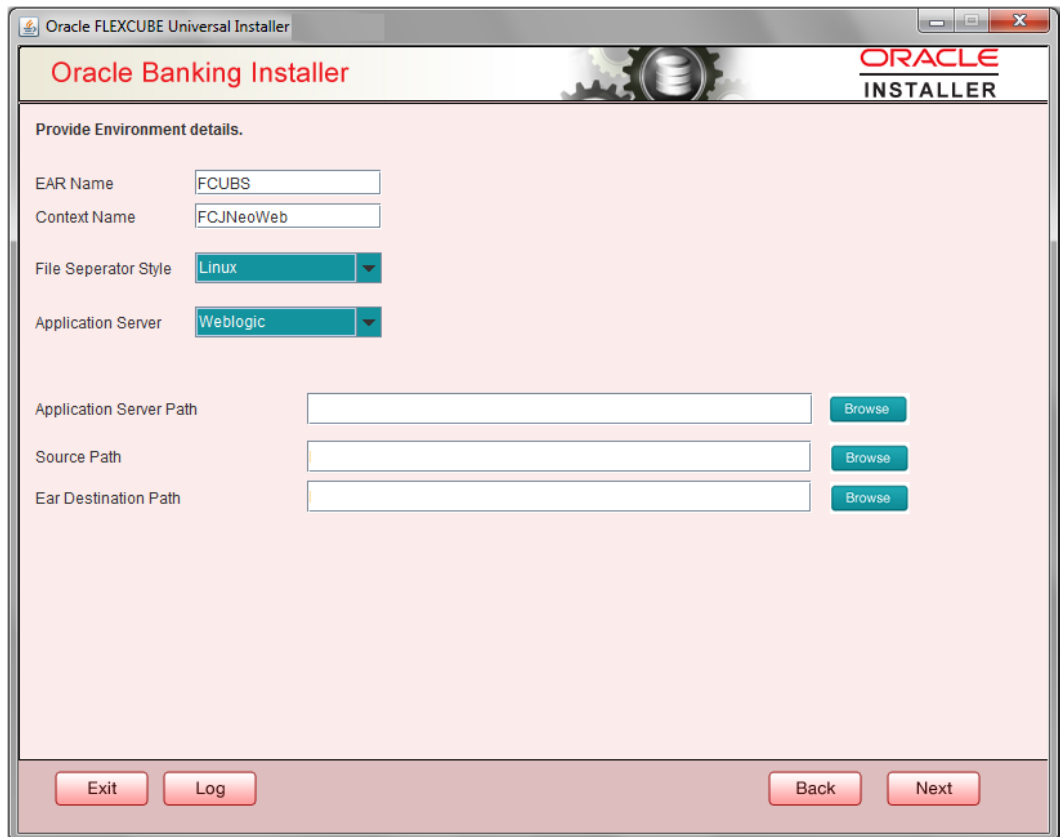
Branch Load Existing Branch Property File

Host Address BPEL Scheduler

Reports OFTW FGL SIANET Adapter

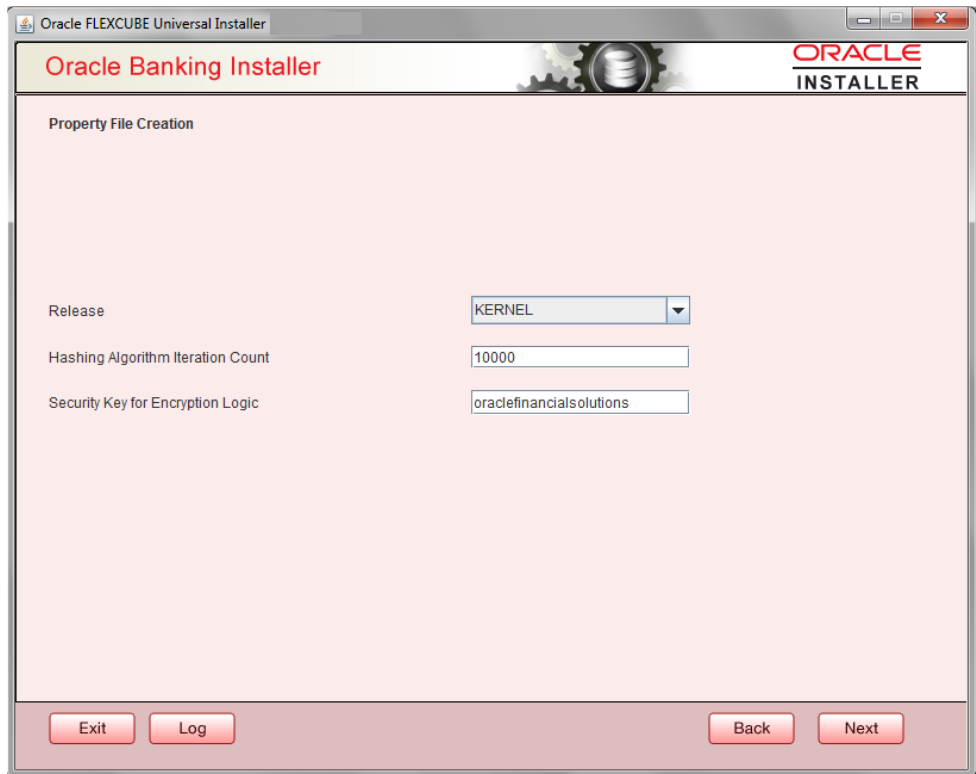
DMS Insulation ELCM Adapter required

3. The below Screen accepts EAR name, Context Name, Application Server Path, Source Path and EAR Destination path. Enter the valid data and select File Separator Style and application server from drop down.

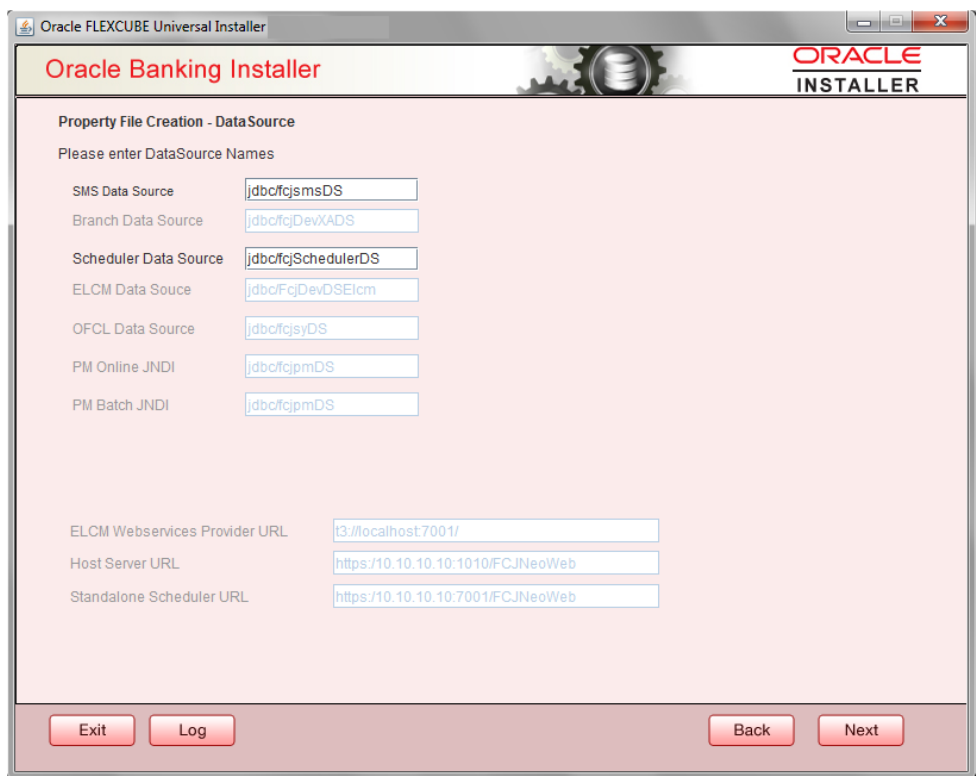


4. Click on 'Next' button to navigate to below Screen.
5. Below shown Screen contains:

Field	Description
Release	Select the release from the adjoining drop down list.
Hashing Algorithm Iteration Count	It should be entered, which will be used for encryption.
Security key for encryption logic	



6. Click on 'Next' button to proceed to DataSource Screen.
7. Enter JNDI value for the Datasources enabled and click on Next button.



- [Setting General Properties](#)
This section describes the process of setting common properties of Standalone Installer.
- [Single Sign on](#)
This topic explains the systematic instructions of setting single sign on.
- [SMTPS Details](#)
- [Configuring Scheduler Queues](#)
This topic explains the systematic instructions to configure scheduler data source
- [Setting EMS FTP/FTPS Properties](#)
This topic explains the EMS FTP/FTPS properties.
- [Setting BIP/GI Upload Queue](#)
This screen describes how to create the property file. Here, you need to set the BIP and BIP Advice report details.
- [Setting Report Properties](#)
This section describes the methods to set report properties.
- [Saving Property File](#)
This topic explains to save the property file.

1.2.1 Setting General Properties

This section describes the process of setting common properties of Standalone Installer.

- The installer displays the '**General Properties**' screen.

Oracle FLEXCUBE Universal Installer

Oracle Banking Installer

ORACLE
INSTALLER

Property File Creation - General Property

Debug Logs Required: LOV Fetch Required

Work Area:

Signature Path:

Excel Path:

Request Time Out: In milli seconds

Connection Time Out: In Seconds

Session Time Out: In Seconds

Max Image Size: In Bytes

User Batch Time: In Hours

Css Style:

Language:

Name:

ISO Code:

Application Title:

Version:

CopyRights:

Exit Log Back Next

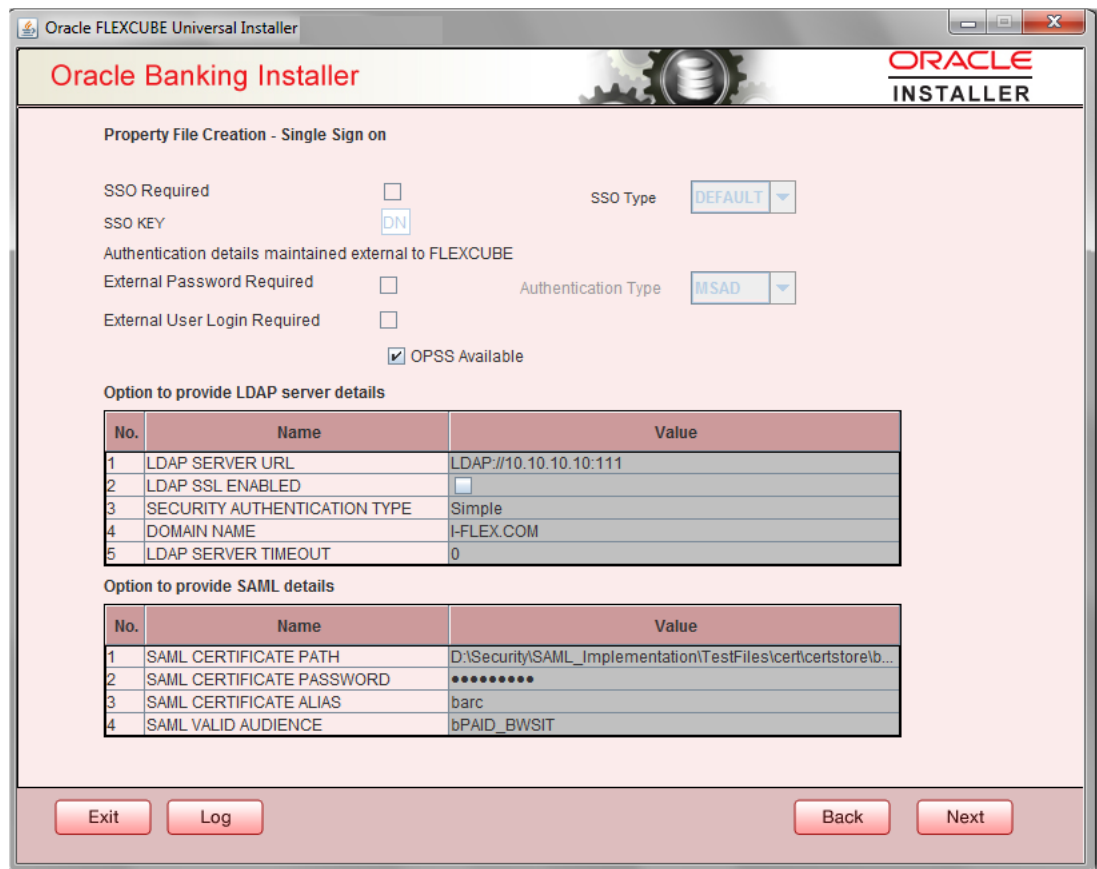
Specify the following details, refer the table below:

Field	Description
Debug Logs Required	If you require debug option, select ' Yes ' from the drop-down list. If you do not require debug option, select ' No '.
Work Area	Specify the work area. For example: D:\BrnDbgs\
Signature Path	Specify the location at which the signature images are placed.
Excel Path	Specify the location at which the excel files are generated.
Request Time Out	Specify the database request timeout value in milli seconds. This is the maximum number of seconds the database waits for a query to return the result.
Connection Time Out	Specify the database connection timeout value in seconds. This is the maximum number of seconds the application waits for a connection to the database to open.
Session Time Out	Enter the session time out value in seconds. This is the maximum number of seconds during which the application gets active without any user intervention. If there is no user intervention continuously for the duration specified here, the user session gets expire.
LOV Fetch Required	If you check this box, the option lists in Oracle Banking Trade Finance displays the matching values based on the first characters that you enter in a field. If you specify the first three characters of a value to be entered in an option list and tab out, the system displays the complete list of values that are matching the first three characters. If you do not check this, option lists does not show the matching values based on the first few characters. You need to specify the complete value against the field.
CSS style	Select Default or Custom from drop-down. By Default CSS Style name will be ' flexblue '.
Language	Select language from the drop-down. Version and Copyright are other general properties. Click on Next button, once all the property details are entered.

1.2.2 Single Sign on

This topic explains the systematic instructions of setting single sign on.

1. The installer displays the **Single Sign on** screen. Only '**OPSS Available**' option will be enabled for Scheduler. Select the option if needed.

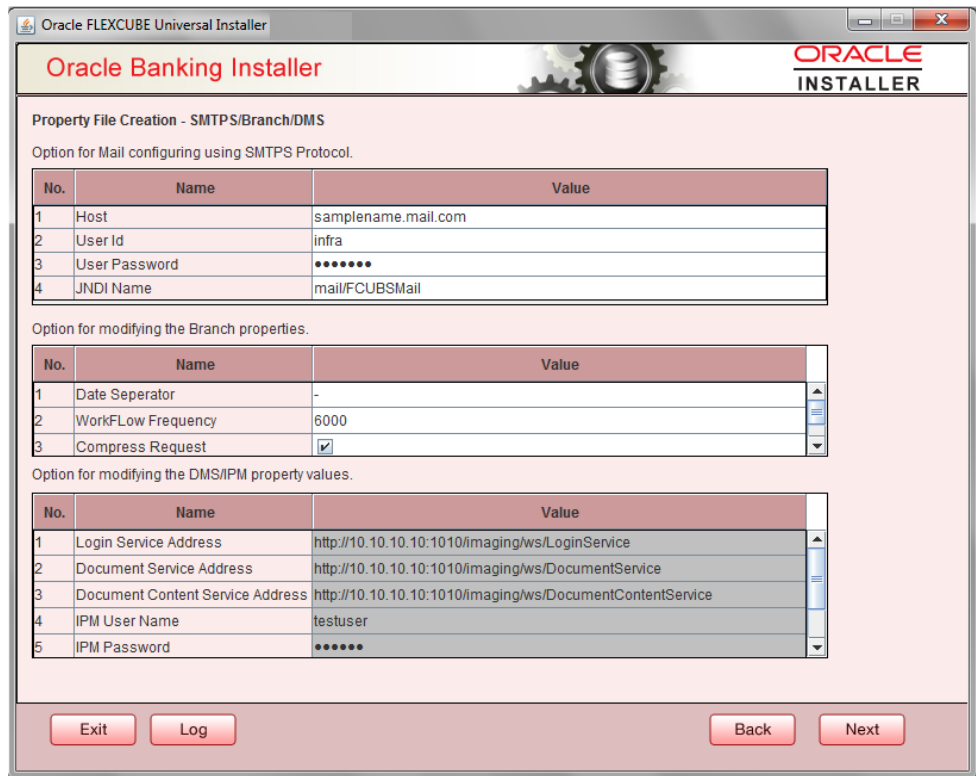


1.2.3 SMTPS Details

SMTPS mail configuration is enabled for Scheduler.

1. Click the **Next** button and the following screen is displayed. **Oracle Banking Installer - Property File Creation - SMTPS/Branch/DMS** screen is displayed.

Figure 1-1 Oracle Banking Installer - Property File Creation - SMTPS/ Branch/DMS



2. On the **Oracle Banking Installer - Property File Creation - SMTPS/ Branch/DMS** screen, specify the fields. For more information, refer the field description table.

Field	Description
Host	Specify the SMTP host name.
User ID	Specify the user ID.
User Password	Specify the user password.
JNDI Name	Specify the JNDI name.

3. Once you have specified the above details, click the **Next** button.

1.2.4 Configuring Scheduler Queues



This topic explains the systematic instructions to configure scheduler data source

1. The system displays the following screen: **Oracle Banking Installer - Property File Creation - Scheduler Queues** screen is displayed.

2. On the **Oracle FLEXCUBE Universal Installer - Property File Creation - Scheduler Queues** screen, specify the fields.

For more information, refer the field description table.

Field	Description
Notify Destination	Specify the notify destination. Select one of the following options: <ul style="list-style-type: none"> • QUEUE • TOPIC
Queue Name	Set ' NOTIFY_DEST_QUEUE ' as the destination queue name.
Queue Connection Factory	Set ' NotifyDestQCF ' as the queue connection factory.
Secure	Check this box to indicate that it is a secured queue connection factory. If you check this box, the caller ID and caller password will be enabled.
Caller ID	Specify the caller ID for the secured queue connection factory.

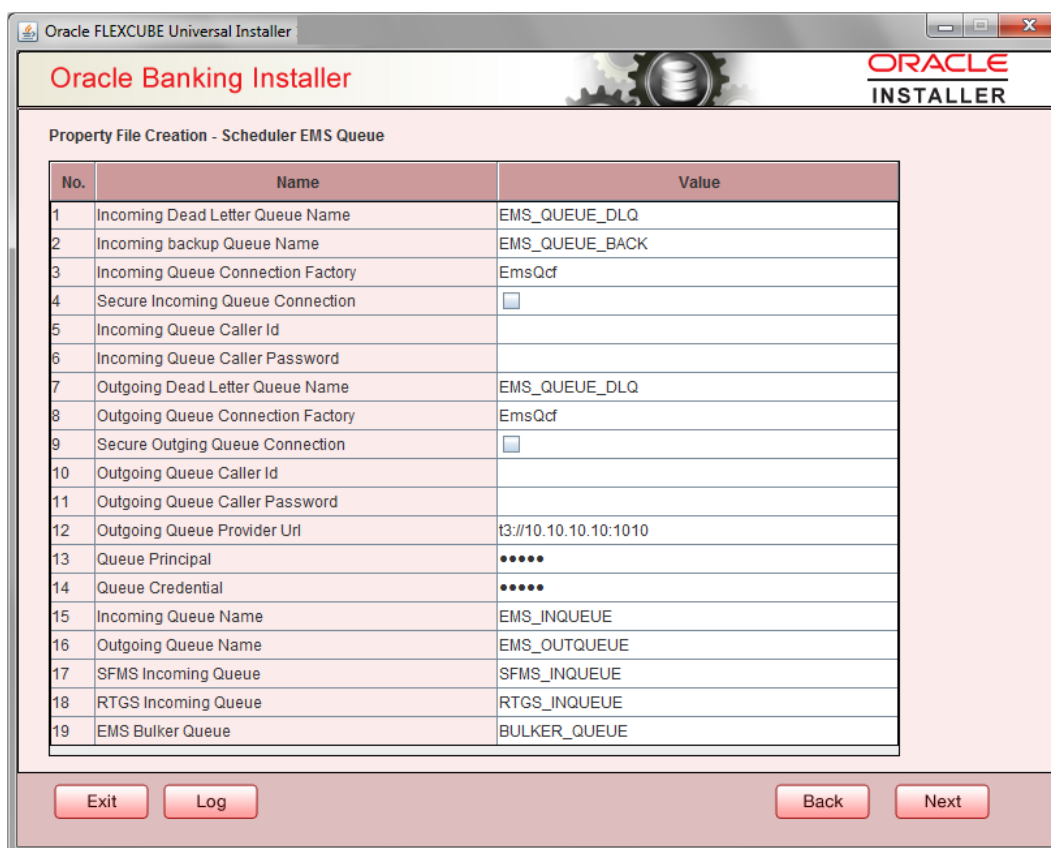
Field	Description
Caller Password	<p>Specify the password for the caller ID to access the secured queue connection factory.</p>  <p>If the queue connection factory is not secured, i.e., if you have not checked the box 'Secure', the installer will not display the fields 'Caller ID' and 'Caller Password'. You need not provide these details in that case.</p>
Notify Queue Location	<p>Specify the notify queue location. Select one of the following options:</p> <ul style="list-style-type: none"> • Internal • External  <p>For Oracle WebLogic application server, the notify queue location should be selected as 'Internal'.</p> <p>If you choose 'External' following details for the external queue will be enabled.</p>
Provider URL	<p>Specify the provide URL. (iiop://localhost:1010) 1010 is the default IIOP port.</p>

Application Server	EMS Out Initial Context Factory
Oracle WebLogic	<p>t3://<ip_address>:port For example: t3://10.10.10.10:1010 Here, 10.10.10.10 represents the local host and 1010 to the target server default port (AdminServer/ManagedServer).</p>
IBM WebSphere	<p>iiop://<ip_address>:port For example: iiop://10.10.10.10:1010 Here, 1010 represents the default iiop port</p>

Security Principal	Specify the login ID to access the application server.
Security Credentials	Specify the password to access the application server. Click ' Next ' to proceed with scheduler configuration.
Notify Deferred Queue Name	Set ' DEFERRED_DEST_QUEUE ' as the notify differed queue name.
Deferred Queue Connection Factory	Set ' DeferredDestQcf ' as the deferred queue connection factory.
Secure	<p>Check this box to indicate that it is a secured deferred queue connection factory. If you check this box, caller ID and caller password will be enabled.</p> <p>Specify the caller ID and caller password for the secured deferred queue connection factory.</p>
Notify Queue Name	Set ' NOTIFY_QUEUE ' as the notify queue name.

Dead Letter Queue Name	Set ' NOTIFY_QUEUE_DLQ ' as the dead letter queue name.
Notify Queue Connection Factory	Set ' NOTIFY_MDB_QCF ' as the notify queue connection factory.
Secure	Check this box to indicate that it is a secured notify internal Queue. If you check this box, caller ID and caller password will be enabled. Specify the caller ID and caller password for the secured notify queue connection factory.

3. Click '**Next**' and the following screen is displayed:



Specify the following details, refer the table below:

Field	Description
Incoming Dead Letter Queue Name	Set ' EMS_QUEUE_DLQ ' as the incoming dead letter queue name.
Incoming Backup Queue Name	Set ' EMS_QUEUE_BACK ' as the incoming backup queue name.
Incoming Queue Connection Factory	Set ' EmsQcf ' as the incoming queue connection factory.
Secure Incoming Queue Connection	Check this box to indicate that it is a secured queue connection.
Incoming Queue Caller ID	Specify the caller ID for the secured queue connection.
Incoming Queue Caller Password	Specify the caller password for the secured queue connection.

Field	Description
Outgoing Dead Letter Queue Name	Set 'EMS_QUEUE_DLQ' as outgoing dead letter queue name.
Outgoing Queue Connection Factory	Set 'EmsQcf' as the outgoing queue connection factory.
Secure Outgoing Queue Connection	Check this box to indicate that it is a secured outgoing queue connection.
Outgoing Queue Caller ID	Specify the caller ID for the secured queue connection.
Outgoing Queue Caller Password	Specify the caller Password for the secured queue connection.
Outgoing Queue Provider URL	Specify the URL of the outgoing queue.
Queue Principal	Specify the queue principal.
Queue Credential	Specify the queue credential.
Incoming Queue Name	Specify the incoming queue name.
Outgoing Queue Name	Specify the outgoing queue name.
SFMS Incoming Queue	Specify the SFMS Incoming Queue.
RTGS Incoming Queue	Specify the RTGS incoming Queue.
EMS Bulker Queue	Specify the EMS Bulker Queue

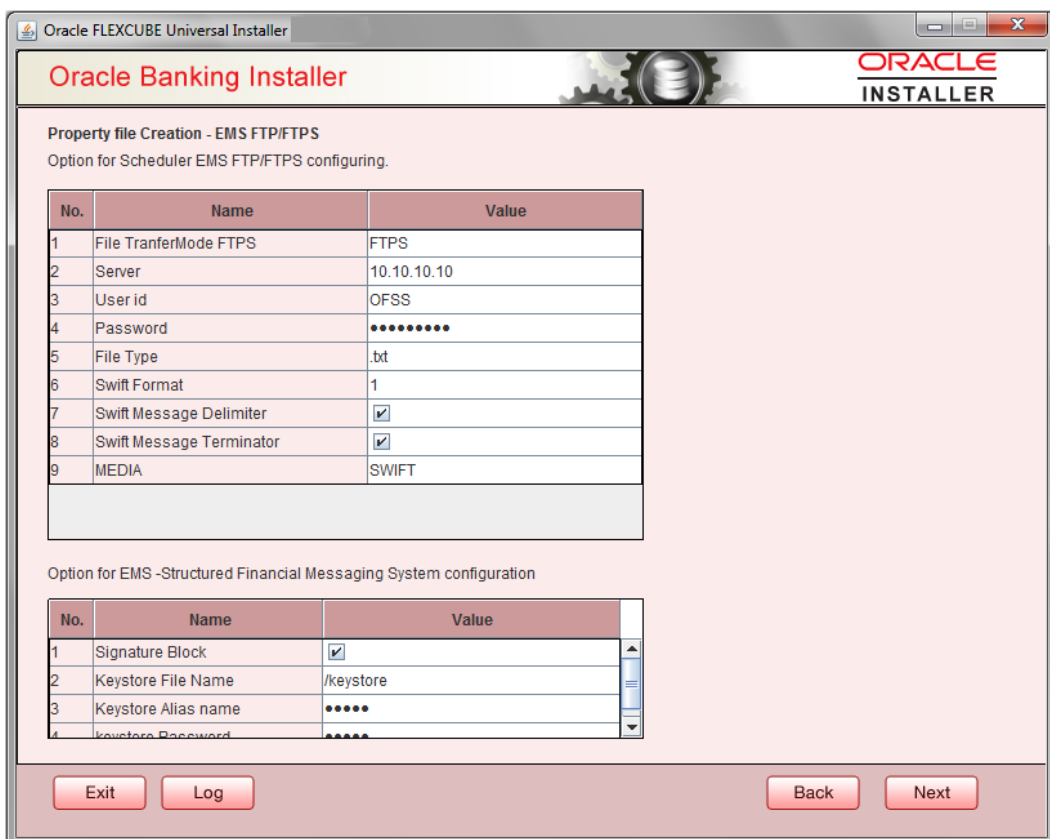
- Once you have specified the above details, click '**Next**' and system displays the next screen.

1.2.5 Setting EMS FTP/FTPS Properties

This topic explains the EMS FTP/FTPS properties.

- Click the **Next** button and the following screen is displayed. **Oracle Banking Installer - Property File Creation - EMS FTP/FTPS** screen is displayed.

Figure 1-2 Oracle Banking Installer - Property File Creation - EMS FTP/FTPS



2. On the **Oracle Banking Installer - Property File Creation - Scheduler EMS Queue** screen, specify the EMS FPT/FTPS fields. For more information on fields, refer the table below:

Field	Description
File Transfer Mode FTPS	Specify the mode of transferring files to EMS. Select one of the following: <ul style="list-style-type: none"> • FTPS • SFTP • HTTP
Server	Specify the server IP address for the selected file transfer mode.
User ID	Specify the user ID to access the server of the file transfer mode.
Password	Specify the password to for the above user ID.
File Type	Specify the type of file that is transferred. By default, the Installer sets it as 'txt' .
SWIFT Message Delimiter	Select check box if needed.
SWIFT Message Terminator	Select check box if needed.
Media	Specify the Media
Signature Block	Check this box to enable signature block.
Keystore File Name	Specify the keystore file name.
Keystore Alias Name	Specify the keystore alias name.
Keystore Password	Specify the keystore password.

- Once you have specified the above details, click **Next** and system displays the next screen.

1.2.6 Setting BIP/GI Upload Queue

This screen describes how to create the property file. Here, you need to set the BIP and BIP Advice report details.

- Click the **Next** button and the following screen is displayed. Oracle Banking Installer - Scheduler BIP/GI Upload Queue.

- In the **Oracle Banking Installer - Scheduler BIP/GI Upload Queues** screen, specify the fields.

For more information, refer the field description table.

Field	Description
BIP Queue Name	Specify the BIP queue name as 'INTERNAL_BIPREPORT_QUEUE' .
BIP DeadLetter Queue Name	Specify the BIP deadletter queue name as 'INTERNAL_BIP_QUEUE_DLQ' .
BIPAdvice Queue Name	Specify the BIP advice queue name as 'INTERNAL_BIPADVREPORT_QUEUE' .
BIPAdvice DeadLetter Queue Name	Specify the BIP advice dead letter queue name as 'INTERNAL_BIP_ADVICE_QUEUE_DLQ' .
Queue Connection Factory	Specify the queue connection factory as 'BIPQCF' .

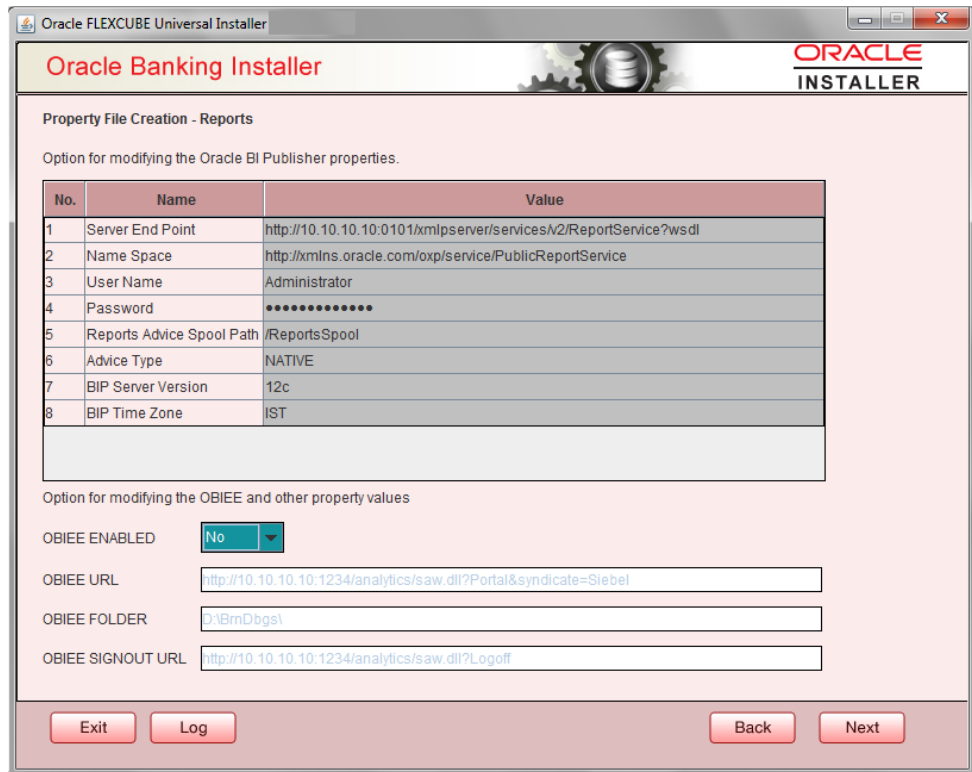
Field	Description
Secure	Check this box to indicate that it is a secured deferred queue connection factory. The caller ID and caller password will be enabled. Specify the caller ID and caller password for the secured queue connection factory. Enter these values for GI Upload Queue.
Queue Name	Specify the queue name as 'INTERNAL_GI_UPLOAD_QUEUE' .
Dead Letter Queue Name	Specify the dead letter queue name as 'INTERNAL_GI_UPLOAD_DLQ' .
Queue Connection Factory	Specify the queue connection factory as 'GI_UPLOAD_QCF' .
Secure	Check this box to indicate that it is a secured deferred queue connection factory. The caller ID and caller password as shown in the following screen: Specify the caller ID and caller password for the secured queue connection factory.

3. Once you have specified the above details, click **'Next'** and system displays the next screen.

1.2.7 Setting Report Properties

This section describes the methods to set report properties.

1. Click the **Next** button and the following screen is displayed. Oracle Banking Installer - Property File Creation - Reports screen is displayed.



- On the **Oracle Banking Installer - Property File Creation - Reports** screen, specify the Publisher Properties fields.

For more information, refer the field description table

Field	Description
Server End Point	Specify the BIP end point. http://whf00blq:9502/xmlpserver/services/v2/ReportService?wsdl However, you need to change the IP and port where BIP Application is installed. WSDL URL gets modified based on "BIP Server Version" on selecting the required version from the drop-down.
Name Space	Specify the BIP name space. By default, the installer displays ' http://xmlns.oracle.com/oxp/service/PublicReportService '.
User Name	Specify the BIP user name. By default, the Installer displays ' Administrator '.
Password	Specify the password for the above user name. By default, the Installer sets it as ' Administrator '.
Reports Spool Path	Specify the reports spool path. By default, the Installer displays /ReportsSpool
Advice Type	Specify the advice type. You can choose one of the following: <ul style="list-style-type: none"> NATIVE - This advice type is used for generating advices in text format BIP - This advice type is used for generating advices in PDF format.
BIP Server Version	Specify the qualified BIP server version. Example : 12c

Field	Description
BIP Time Zone	Specify the time zone of the BIP server. Specify the following details:
Factory Initial	Specify the factory initial.
Provider URL	Specify the URL of the server. Enter the IP address, target server port (AdminServer/ManagedServer) and the context root.
Security Principal	Specify the user name to access the application server where BPEL is installed.
Security Credential	Specify the password for the above user name.
Soa Partition Name	Specify the Soa Server Name. By default it will be the Installer sets it to ' default '.
Domain Password	Specify the domain password for which SOA server is extended
Dedicated Connection	Check this box to indicate that this connection is not used for other purposes.
BPEL Realm Name	Specify the BPEL realm name.
BAM URI	Specify the BAM URI.
BPM Installed	Check this box if the BPM is installed.
BI User	Specify the BI user.
BI Password	Specify the password for BI user.
External Alerts Required	Check this box to enable External Alerts Required.
Enabling Load Balance	Check this box to enable BPEL load balance.
Frequency	Specify the balance load frequency.
Task Counts	Specify the balance load task count.
Cut-off Time	Specify the balance load cut-off time.

- Once you have specified the above details, click '**Next**' and system displays the next screen.

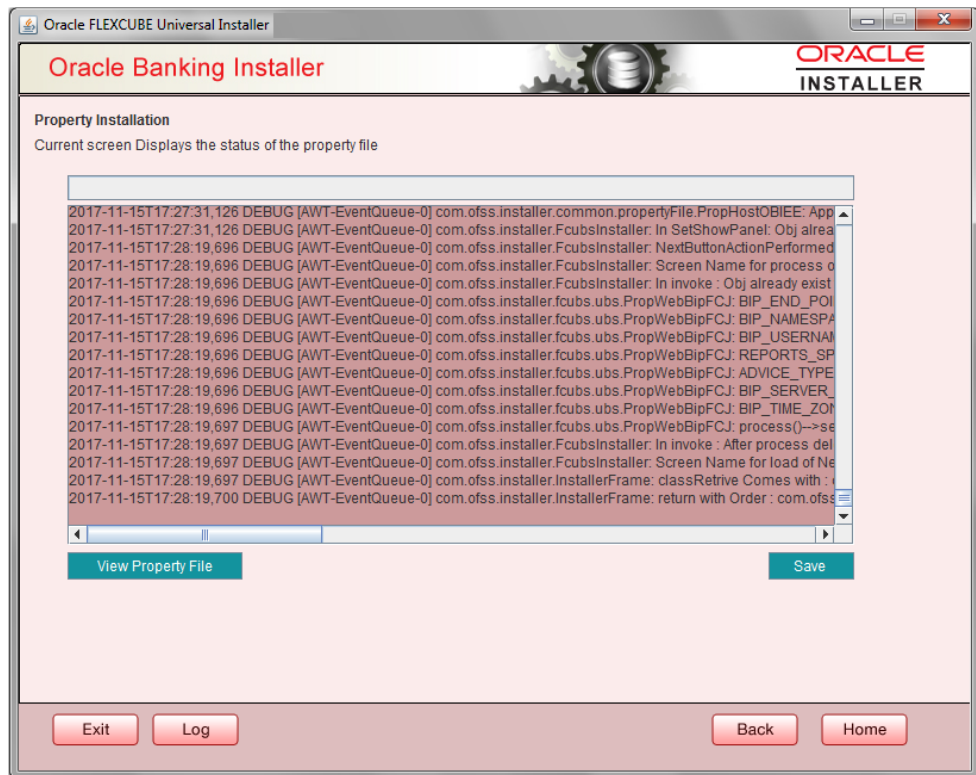
1.2.8 Saving Property File

This topic explains to save the property file.

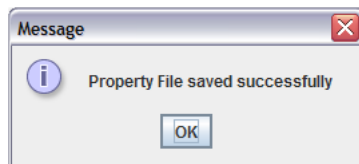
After completing all the required settings explained above, you need to save the property file.

- Save the property file.

Figure 1-3 Property Installation

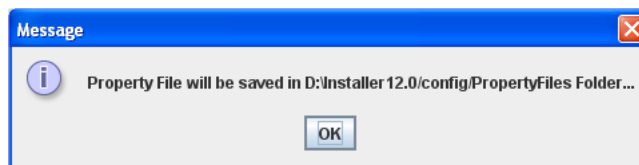


2. You can view the status of property file creation in the above screen. Once the file is saved, the installer displays the following message:



Two property files: fcubs.properties and scheduler.properties are saved.

3. If you do not use the 'Save' or 'Save As' buttons, the installer will save the properties file in '<InstallerSources>\config\PropertyFiles' folder. In that case, you will see the message below.



This completes the properties file creation.