

Oracle® Banking Payments

Standalone Scheduler Property File Creation



Release 14.7.0.0.0

F90883-02

February 2025

The Oracle logo, consisting of a solid red square with the word "ORACLE" in white, uppercase, sans-serif font centered within it.

ORACLE®

Oracle Banking Payments Standalone Scheduler Property File Creation, Release 14.7.0.0.0

F90883-02

Copyright © 2017, 2025, Oracle and/or its affiliates.

This software and related documentation are provided under a license agreement containing restrictions on use and disclosure and are protected by intellectual property laws. Except as expressly permitted in your license agreement or allowed by law, you may not use, copy, reproduce, translate, broadcast, modify, license, transmit, distribute, exhibit, perform, publish, or display any part, in any form, or by any means. Reverse engineering, disassembly, or decompilation of this software, unless required by law for interoperability, is prohibited.

The information contained herein is subject to change without notice and is not warranted to be error-free. If you find any errors, please report them to us in writing.

If this is software, software documentation, data (as defined in the Federal Acquisition Regulation), or related documentation that is delivered to the U.S. Government or anyone licensing it on behalf of the U.S. Government, then the following notice is applicable:

U.S. GOVERNMENT END USERS: Oracle programs (including any operating system, integrated software, any programs embedded, installed, or activated on delivered hardware, and modifications of such programs) and Oracle computer documentation or other Oracle data delivered to or accessed by U.S. Government end users are "commercial computer software," "commercial computer software documentation," or "limited rights data" pursuant to the applicable Federal Acquisition Regulation and agency-specific supplemental regulations. As such, the use, reproduction, duplication, release, display, disclosure, modification, preparation of derivative works, and/or adaptation of i) Oracle programs (including any operating system, integrated software, any programs embedded, installed, or activated on delivered hardware, and modifications of such programs), ii) Oracle computer documentation and/or iii) other Oracle data, is subject to the rights and limitations specified in the license contained in the applicable contract. The terms governing the U.S. Government's use of Oracle cloud services are defined by the applicable contract for such services. No other rights are granted to the U.S. Government.

This software or hardware is developed for general use in a variety of information management applications. It is not developed or intended for use in any inherently dangerous applications, including applications that may create a risk of personal injury. If you use this software or hardware in dangerous applications, then you shall be responsible to take all appropriate fail-safe, backup, redundancy, and other measures to ensure its safe use. Oracle Corporation and its affiliates disclaim any liability for any damages caused by use of this software or hardware in dangerous applications.

Oracle®, Java, MySQL, and NetSuite are registered trademarks of Oracle and/or its affiliates. Other names may be trademarks of their respective owners.

Intel and Intel Inside are trademarks or registered trademarks of Intel Corporation. All SPARC trademarks are used under license and are trademarks or registered trademarks of SPARC International, Inc. AMD, Epyc, and the AMD logo are trademarks or registered trademarks of Advanced Micro Devices. UNIX is a registered trademark of The Open Group.

This software or hardware and documentation may provide access to or information about content, products, and services from third parties. Oracle Corporation and its affiliates are not responsible for and expressly disclaim all warranties of any kind with respect to third-party content, products, and services unless otherwise set forth in an applicable agreement between you and Oracle. Oracle Corporation and its affiliates will not be responsible for any loss, costs, or damages incurred due to your access to or use of third-party content, products, or services, except as set forth in an applicable agreement between you and Oracle.

Contents

1 Preface

Purpose	1-1
Audience	1-1
Documentation Accessibility	1-1
Critical Patches	1-1
Diversity and Inclusion	1-2
Conventions	1-2

2 Creating Property File for Standalone Scheduler

Introduction	2-1
Creating Property File	2-1
Configuring Scheduler Queues	2-4
Setting Common Properties	2-9
Single Sign on	2-10
SMTPS Details	2-11
Configuring Scheduler Queues	2-11
Setting EMS FTP/FTPS Properties	2-16
Saving Property File	2-19

1

Preface

- [Purpose](#)
- [Audience](#)
This manual is intended for the following User/User Roles:
- [Documentation Accessibility](#)
- [Critical Patches](#)
- [Diversity and Inclusion](#)
- [Conventions](#)

Purpose

This guide is designed to help acquaint you with the Oracle Banking Payments application. This guide provides answers to specific features and procedures that the user need to be aware of the module to function successfully.

Audience

This manual is intended for the following User/User Roles:

Table 1-1 User Roles

Role	Function
Implementation & IT Staff	Implementation & Maintenance of the Software

Documentation Accessibility

For information about Oracle's commitment to accessibility, visit the Oracle Accessibility Program website at <http://www.oracle.com/pls/topic/lookup?ctx=acc&id=docacc>.

Access to Oracle Support

Oracle customers that have purchased support have access to electronic support through My Oracle Support. For information, visit <http://www.oracle.com/pls/topic/lookup?ctx=acc&id=info> or visit <http://www.oracle.com/pls/topic/lookup?ctx=acc&id=trs> if you are hearing impaired.

Critical Patches

Oracle advises customers to get all their security vulnerability information from the Oracle Critical Patch Update Advisory, which is available at [Critical Patches, Security Alerts and Bulletins](#). All critical patches should be applied in a timely manner to make sure effective security, as strongly recommended by [Oracle Software Security Assurance](#).

Diversity and Inclusion

Oracle is fully committed to diversity and inclusion. Oracle respects and values having a diverse workforce that increases thought leadership and innovation. As part of our initiative to build a more inclusive culture that positively impacts our employees, customers, and partners, we are working to remove insensitive terms from our products and documentation. We are also mindful of the necessity to maintain compatibility with our customers' existing technologies and the need to ensure continuity of service as Oracle's offerings and industry standards evolve. Because of these technical constraints, our effort to remove insensitive terms is ongoing and will take time and external cooperation.

Conventions

The following text conventions are used in this document:

Convention	Meaning
boldface	Boldface type indicates graphical user interface elements associated with an action, or terms defined in text.
<i>italic</i>	Italic type indicates book titles, emphasis, or placeholder variables for which you supply particular values.
monospace	Monospace type indicates commands within a paragraph, URLs, code in examples, text that appears on the screen, or text that you enter.

2

Creating Property File for Standalone Scheduler

- [Introduction](#)
- [Creating Property File](#)

Introduction

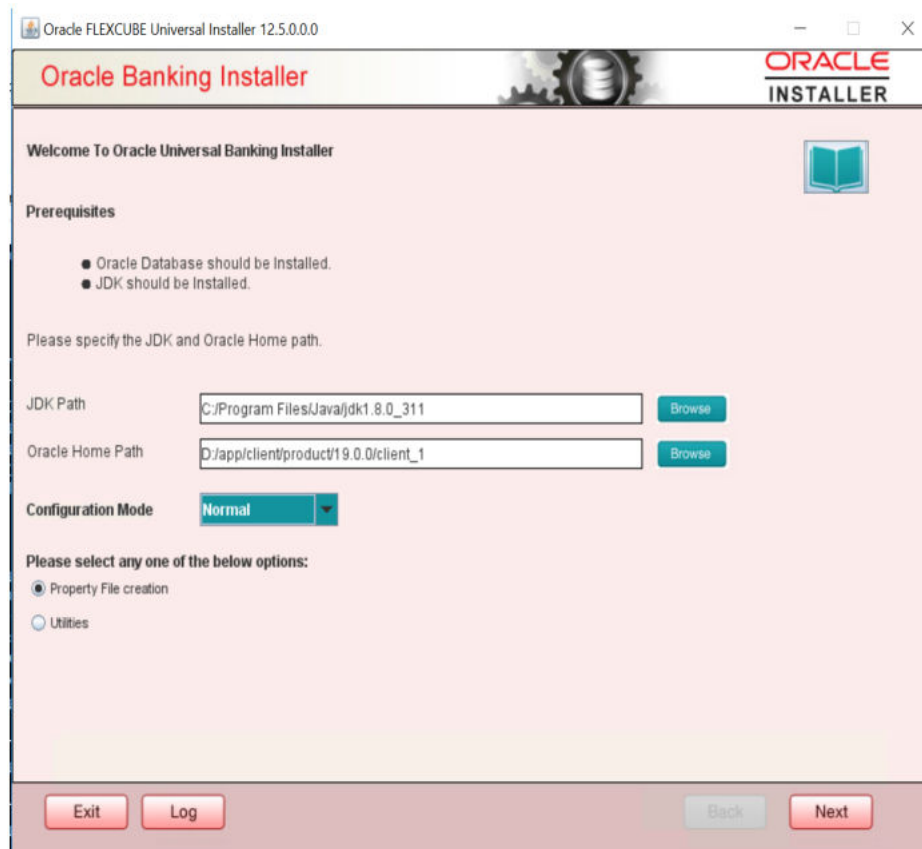
This chapter explains the steps to create property file for Standalone Scheduler.

Creating Property File

To create the property file for Oracle Banking Payments, follow the steps given below:

1. Launch Oracle Banking Universal Installer. Select 'Property File Creation' option and Click **Next** button.

Figure 2-1 Creating Property File



2. Select **Scheduler** component and appropriate plugin if needed

Figure 2-2 Scheduler Component

The screenshot shows the Oracle Banking Installer interface. At the top, it says "Oracle Banking Installer" and "ORACLE INSTALLER". Below this, there is a section titled "Select one of the Components" with a text box for "Load Existing Property File" and a "Browse" button. There are four radio buttons: "INFRA", "Scheduler" (which is selected), "Gateway", and "Switch Interface Installation".

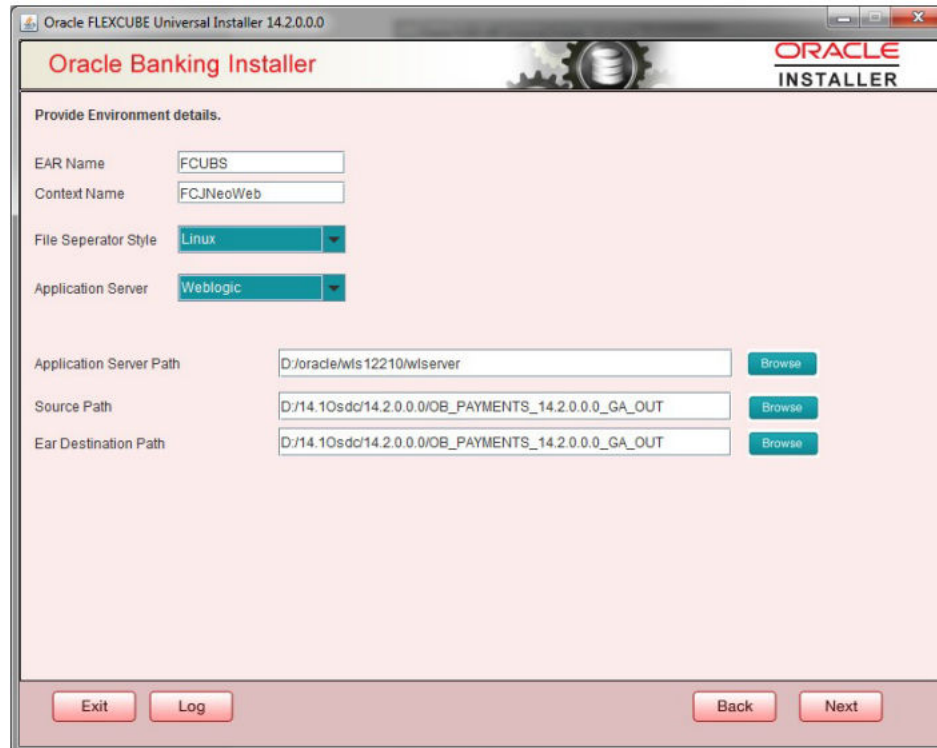
Below that is "Select Oracle Product Processors" with several checkboxes: "Oracle FLEXCUBE Universal Banking", "Oracle FLEXCUBE Enterprise Limits and Collateral Management (CO-DEPLOY)", "Oracle Banking Payments" (checked), "Oracle Banking Corporate Lending", "Open Development Tool", "Oracle Banking Treasury", "Oracle FLEXCUBE Universal Banking for JAPAN", and "Oracle Banking Trade Finance".

Next is "Select Plugins to be Installed" with a "Host Address" field containing "10.10.10.10" and "1010". There are checkboxes for "Origination", "Scheduler", "Reports", "SIANET Adapter", "DMS", "Insulation", and "External Adapter required". A dropdown menu is set to "Standalone".

At the bottom, there are buttons for "Exit", "Log", "Back", and "Next".

3. The below Screen accepts EAR name, Context Name, Application Server Path, Source Path and EAR Destination path. Enter the valid data and select File Separator Style and application server from drop down.

Figure 2-3 Creating Property File



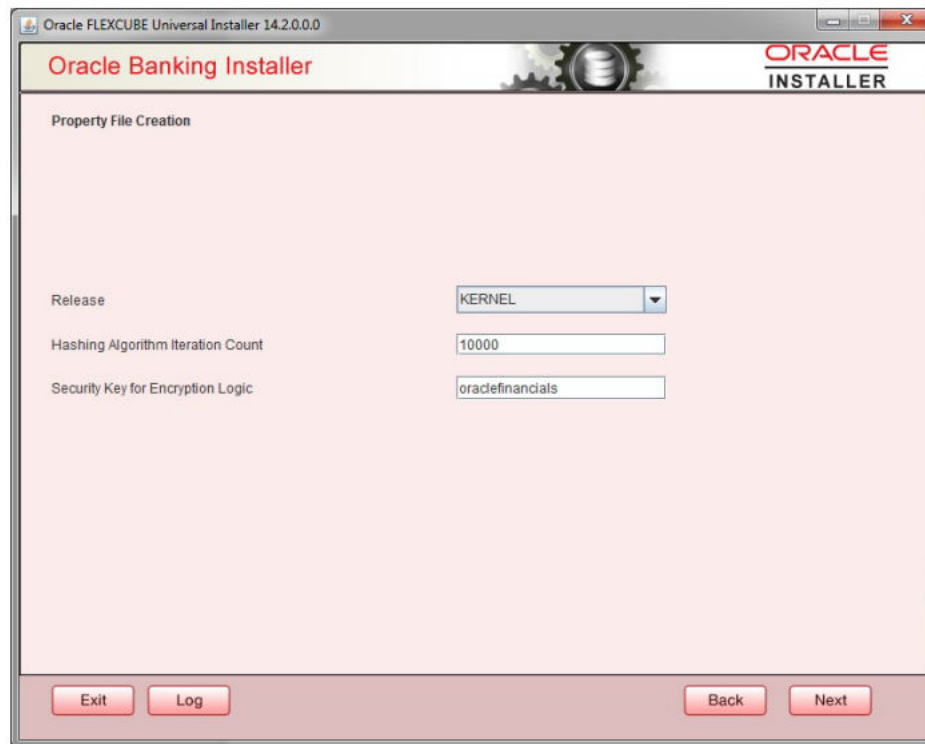
4. Click on **Next** button to navigate to below Screen.

5. Below shown Screen contains:

Release - Select the release from the adjoining drop down list.

Hashing Algorithm Iteration Count and **Security key for encryption logic** should be entered which will be used for encryption. By default the value is 'oraclefinancials'.

Figure 2-4 Property File Creation



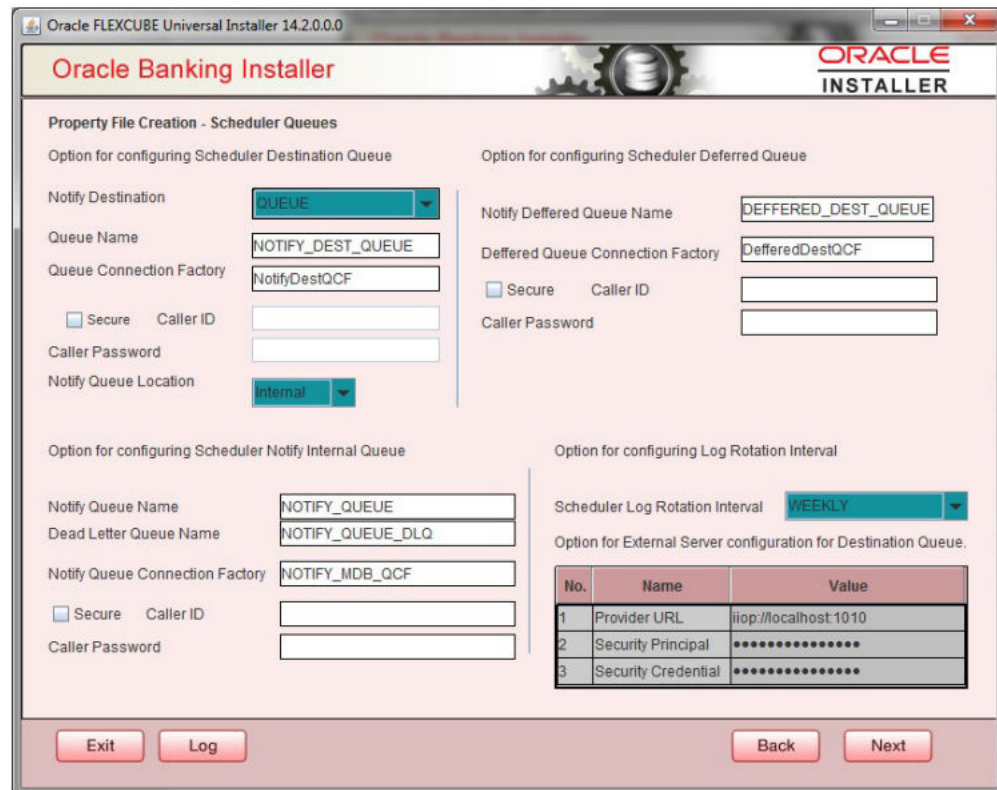
- [Configuring Scheduler Queues](#)
- [Setting Common Properties](#)
- [Single Sign on](#)
- [SMTPS Details](#)
- [Configuring Scheduler Queues](#)
- [Setting EMS FTP/FTPS Properties](#)
- [Saving Property File](#)

Configuring Scheduler Queues

This section describes the method to configure scheduler Queues.

1. System displays the following screen:

Figure 2-5 Configuring Scheduler Queues



2. Specify the following details:

Notify Destination - Specify the notify destination. Select one of the following options:

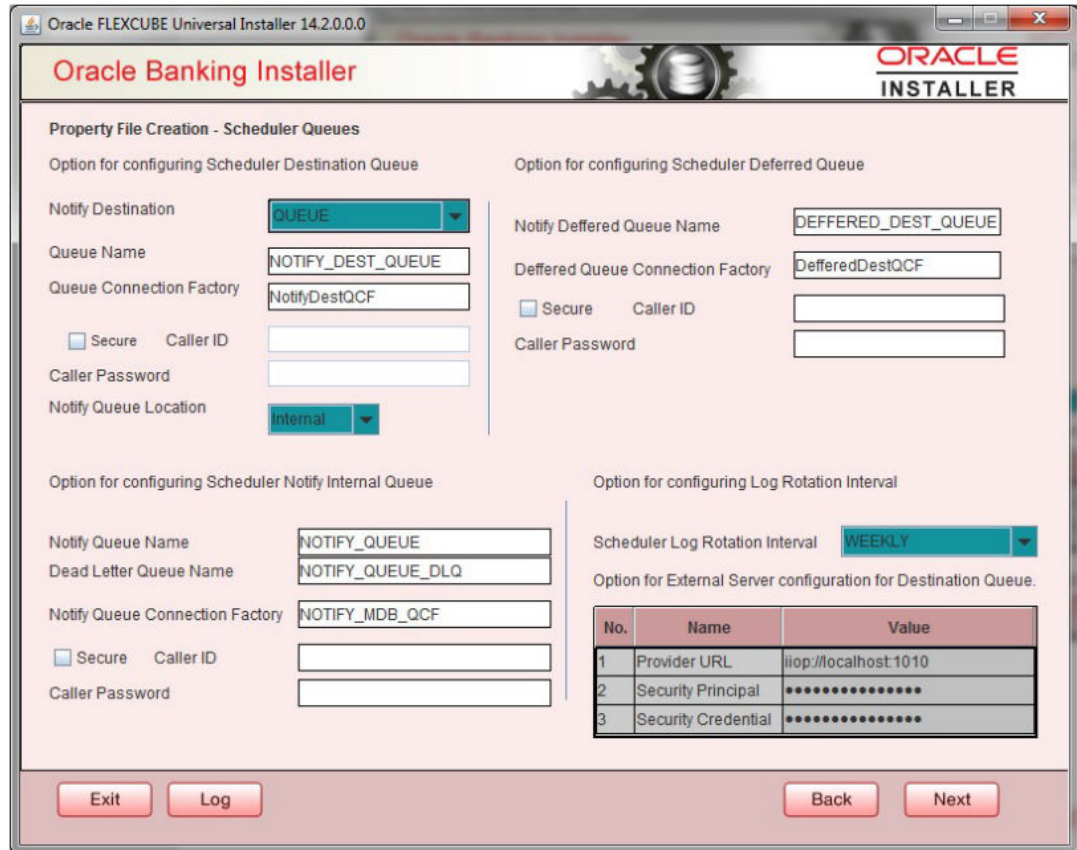
- QUEUE
- TOPIC

Queue Name - Set 'NOTIFY_DEST_QUEUE' as the destination queue name.

Queue Connection Factory - Set 'NotifyDestTCF' as the queue connection factory.

Secure Check this box to indicate that it is a secured queue connection factory. If you check this box, you will be prompted to specify the caller ID and caller password as shown in the following screen.

Figure 2-6 Configuring Scheduler Queues



Caller ID - Specify the caller ID for the secured queue connection factory.

Caller Password - Specify the password for the caller ID to access the secured queue connection factory.

 **Note:**

If the queue connection factory is not secured, i.e., if you have not checked the box 'Secure', the installer will not display the fields 'Caller ID' and 'Caller Password'. You need not provide these details in that case.

Notify Queue Location - Specify the notify queue location. Select one of the following options:

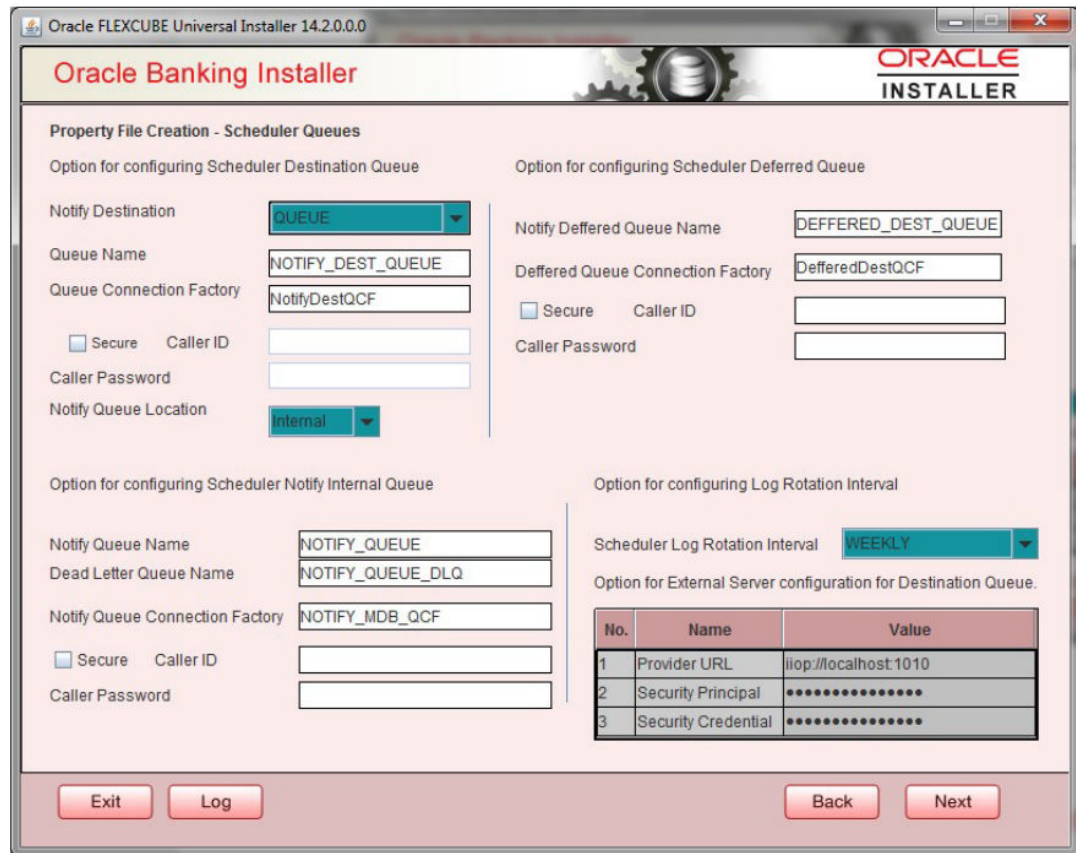
- Internal
- External

 **Note:**

For Oracle WebLogic application server, the notify queue location should be selected as 'Internal'. If you choose 'Internal' as the 'Notify Queue Location', the screen provided in the following step does not get displayed. You will be navigated to next step where you can specify the notify deferred queue name and connection factory.

- If you choose 'External', system displays the following screen:

Figure 2-7 Configuring Scheduler Queues



- Specify the following details of the external queue.

Provider URL - Specify the provide URL (iiop://localhost:1010).

1010 is the default IIOP port.

Application Server	EMS Out Initial Context Factory
Oracle WebLogic	t3://<ip_address>:port For example: t3://10.10.10.10:1010 Here, 10.10.10.10 represents the local host and 1010 to the target server default port (AdminServer/ManagedServer).

Security Principal - Specify the login ID to access the application server.

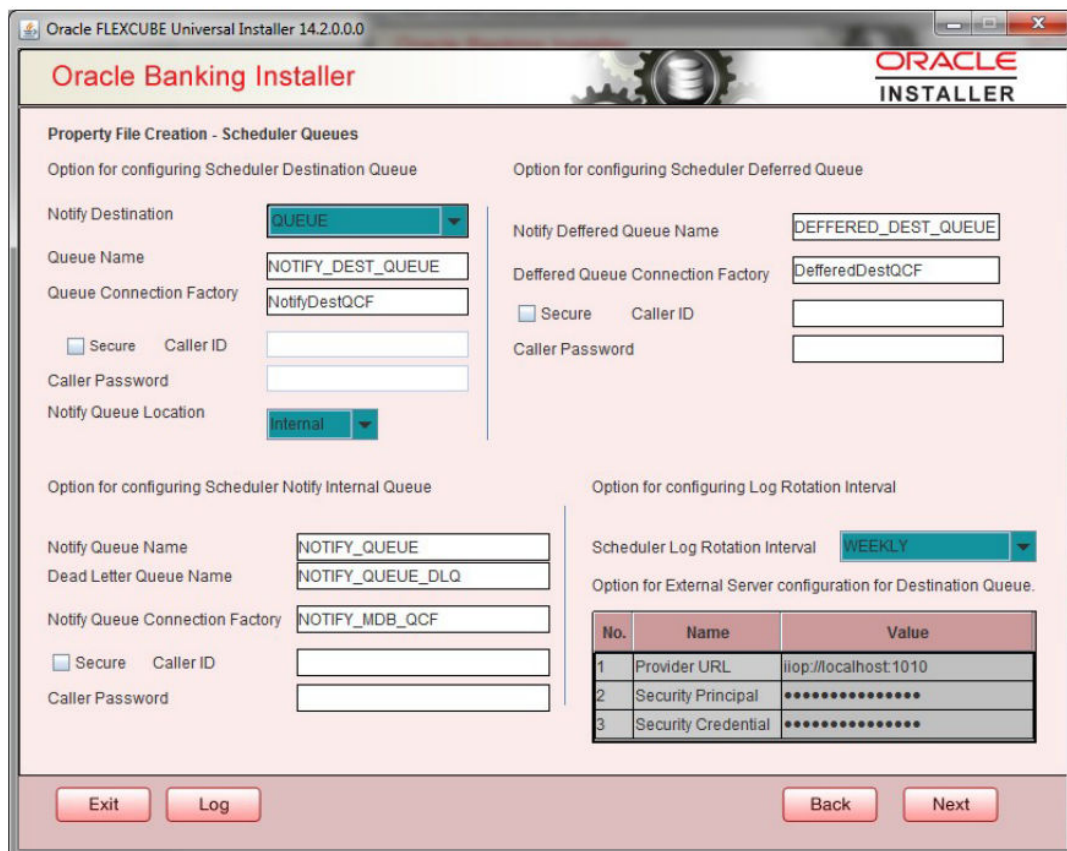
Security Credentials - Specify the password to access the application server.

- Click **Next** to proceed with scheduler configuration.

 **Note:**

If you choose 'Internal' as the 'Notify Queue Location', you will be directly navigated to the following screen. In that case, the installer will not show the screen explained in the previous step.

Figure 2-8 Configuring Scheduler Queues



No.	Name	Value
1	Provider URL	iiop://localhost:1010
2	Security Principal	*****
3	Security Credential	*****

- Specify the following details:

Notify Deferred Queue Name - Set 'DEFFERED_DEST_QUEUE' as the notify differed queue name.

Deferred Queue Connection Factory - Set 'DefferedDestQcf' as the deferred queue connection factory.

Secure - Check this box to indicate that it is a secured deferred queue connection factory. If you check this box, you will be prompted to enter the caller ID and caller password as shown in the following screen.

- Specify the caller ID and caller password for the secured deferred queue connection factory.
- Click **Next** and the following screen is displayed.
- Specify the following details:

Notify Queue Name - Set 'NOTIFY_QUEUE' as the notify queue name.

Dead Letter Queue Name - Set 'NOTIFY_QUEUE_DLQ' as the dead letter queue name.

Notify Queue Connection Factory - Set 'NOTIFY_MDB_QCF' as the notify queue connection factory.

Secure - Check this box to indicate that it is a secured queue connection factory. If you check this box, you will be prompted to enter the caller ID and caller password as shown in the following screen.

10. Specify the caller ID and caller password for the secured notify queue connection factory.
11. Click **Next** and the following screen is displayed.

Setting Common Properties

This section describes the process of setting common properties of Standalone Installer.

1. The installer displays the 'Common Properties' screen.

Figure 2-9 Setting Common Properties

2. Specify the following details:

Debug Logs Required - If you require debug option, select 'Yes' from the drop-down list. If you do not require debug option, select 'No'.

Work Area - Specify the work area.

For example: D:\BrnDbgs\

Signature Path - Specify the location at which the signature images are placed.

Excel Path - Specify the location at which the excel files are generated.

Request Time Out - Specify the database request timeout value in milli seconds. This is the maximum number of seconds the database waits for a query to return the result.

Connection Time Out - Specify the database connection timeout value in seconds. This is the maximum number of seconds the application waits for a connection to the database to open.

Session Time Out - Enter the session time out value in seconds. This is the maximum number of seconds during which the application gets active without any user intervention. If there is no user intervention continuously for the duration specified here, the user session gets expire.

LOV Fetch Required - If you check this box, the option lists in Oracle Banking Payments displays the matching values based on the first characters that you enter in a field. If you specify the first three characters of a value to be entered in an option list and tab out, the system displays the complete list of values that are matching the first three characters.

If you do not check this, option lists does not show the matching values based on the first few characters. You need to specify the complete value against the field.

Click **Next** and the following screen is displayed:

CSS style Select Default or Custom from dropdown. By Default CSS Style name will be 'flexblue'.

Language Select language from the dropdown.

Version and Copyright are other general properties.

Click on Next button, once all the property details are entered.

Single Sign on

- Only 'Platform Security' option will be enabled for Scheduler. Select the option if needed.

Figure 2-10 Single Sign on

Property File Creation - Single Sign on

SSO Required SSO Type:

SSO KEY: Authentication details maintained external to FLEXCUBE

External Password Required Authentication Type:

External User Login Required

Platform Security SMS Security Key:

Option to provide LDAP server details

No.	Name	Value
1	LDAP SERVER URL	LDAP://10.10.10.10:111
2	LDAP SSL ENABLED	<input type="checkbox"/>
3	SECURITY AUTHENTICATION TYPE	Simple
4	DOMAIN NAME	flexcube.com
5	LDAP SERVER TIMEOUT	0

Option to provide SAML details

No.	Name	Value
1	SAML CERTIFICATE PATH	D:\Security\SAML_Implementation\TestFiles\certstoreib...
2	SAML CERTIFICATE PASSWORD	*****
3	SAML CERTIFICATE ALIAS	barc
4	SAML VALID AUDIENCE	bPAID_BWSIT

Exit Log Back Next

SMTPS Details

SMTPS mail configuration is enabled for Scheduler.

Specify the below details:

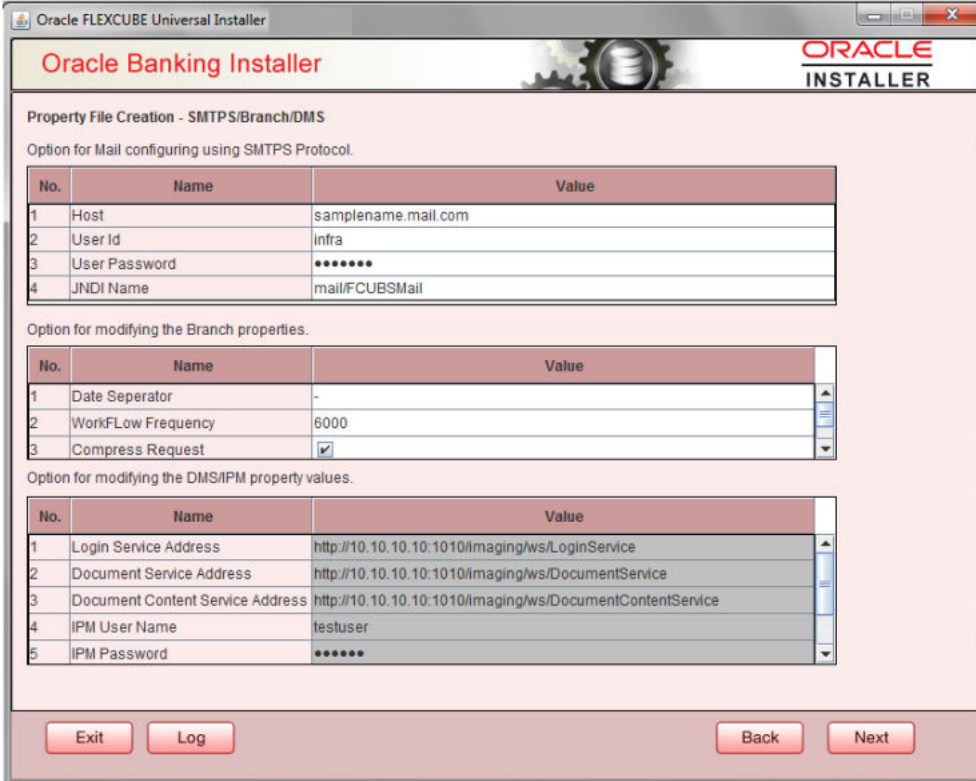
Host: Specify the SMTP host name.

User ID: Specify the user ID.

User Password: Specify the user password.

JNDI Name: Specify the JNDI name.

Figure 2-11 SMTPS Details



The screenshot shows the Oracle Banking Installer window with the title bar "Oracle FLEXCUBE Universal Installer". The main window has a header "Oracle Banking Installer" and the Oracle logo. The content area is titled "Property File Creation - SMTPS/Branch/DMS" and contains three sections for configuration:

Option for Mail configuring using SMTPS Protocol.

No.	Name	Value
1	Host	samplename.mail.com
2	User Id	infra
3	User Password	*****
4	JNDI Name	mail/FCUBSMail

Option for modifying the Branch properties.

No.	Name	Value
1	Date Separator	-
2	WorkFlow Frequency	6000
3	Compress Request	<input checked="" type="checkbox"/>

Option for modifying the DMS/IPM property values.

No.	Name	Value
1	Login Service Address	http://10.10.10.10:1010/imaging/ws/LoginService
2	Document Service Address	http://10.10.10.10:1010/imaging/ws/DocumentService
3	Document Content Service Address	http://10.10.10.10:1010/imaging/ws/DocumentContentService
4	IPM User Name	testuser
5	IPM Password	*****

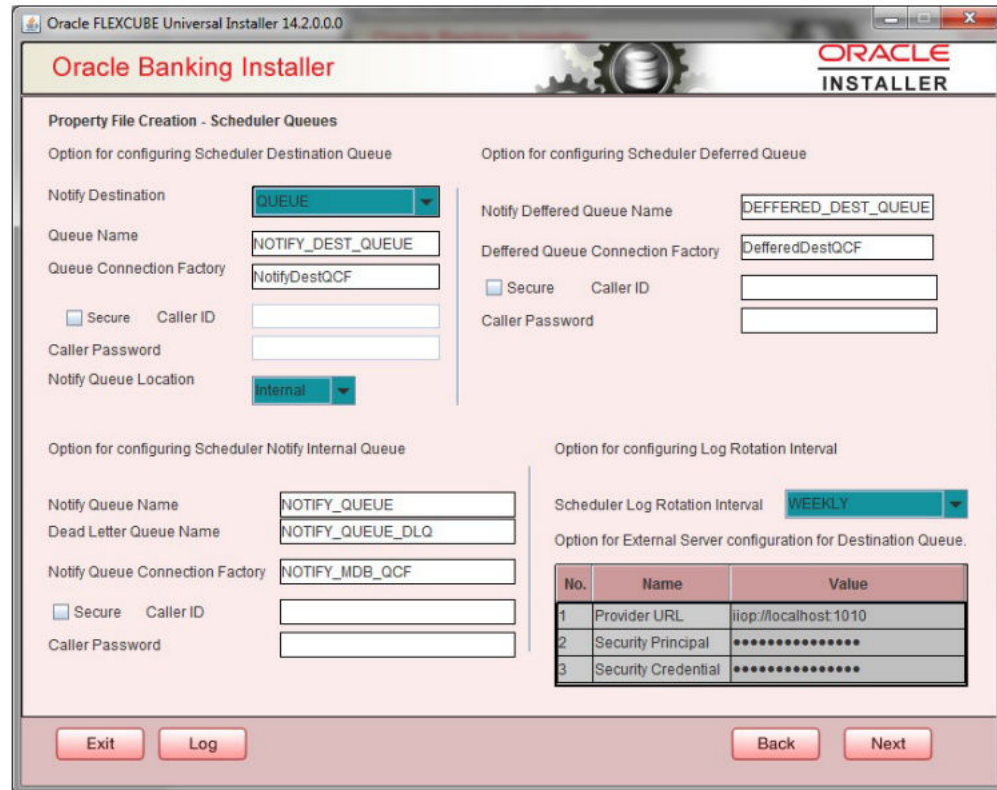
At the bottom of the window, there are buttons for "Exit", "Log", "Back", and "Next".

Configuring Scheduler Queues

This section describes the method to configure scheduler Queues.

1. System displays the following screen:

Figure 2-12 Configuring Scheduler Queues



2. Specify the following details:

Notify Destination - Specify the notify destination. Select one of the following options:

- QUEUE
- TOPIC

Queue Name - Set 'NOTIFY_DEST_QUEUE' as the destination queue name.

Queue Connection Factory - Set 'NotifyDestTCF' as the queue connection factory.

Secure Check this box to indicate that it is a secured queue connection factory. If you check this box, you will be prompted to specify the caller ID and caller password as shown in the following screen.

Figure 2-13 Configuring Scheduler Queues

Property File Creation - Scheduler Queues

Option for configuring Scheduler Destination Queue

Notify Destination: QUEUE

Queue Name: NOTIFY_DEST_QUEUE

Queue Connection Factory: NotifyDestQCF

Secure Caller ID: []

Caller Password: []

Notify Queue Location: Internal

Option for configuring Scheduler Deferred Queue

Notify Deferred Queue Name: DEFERRED_DEST_QUEUE

Deferred Queue Connection Factory: DeferredDestQCF

Secure Caller ID: []

Caller Password: []

Option for configuring Scheduler Notify Internal Queue

Notify Queue Name: NOTIFY_QUEUE

Dead Letter Queue Name: NOTIFY_QUEUE_DLQ

Notify Queue Connection Factory: NOTIFY_MDB_QCF

Secure Caller ID: []

Caller Password: []

Option for configuring Log Rotation Interval

Scheduler Log Rotation Interval: WEEKLY

Option for External Server configuration for Destination Queue.

No.	Name	Value
1	Provider URL	iiop://localhost:1010
2	Security Principal	*****
3	Security Credential	*****

Buttons: Exit, Log, Back, Next

Caller ID - Specify the caller ID for the secured queue connection factory.

Caller Password - Specify the password for the caller ID to access the secured queue connection factory.

Note:

If the queue connection factory is not secured, i.e., if you have not checked the box 'Secure', the installer will not display the fields 'Caller ID' and 'Caller Password'. You need not provide these details in that case.

Notify Queue Location - Specify the notify queue location. Select one of the following options:

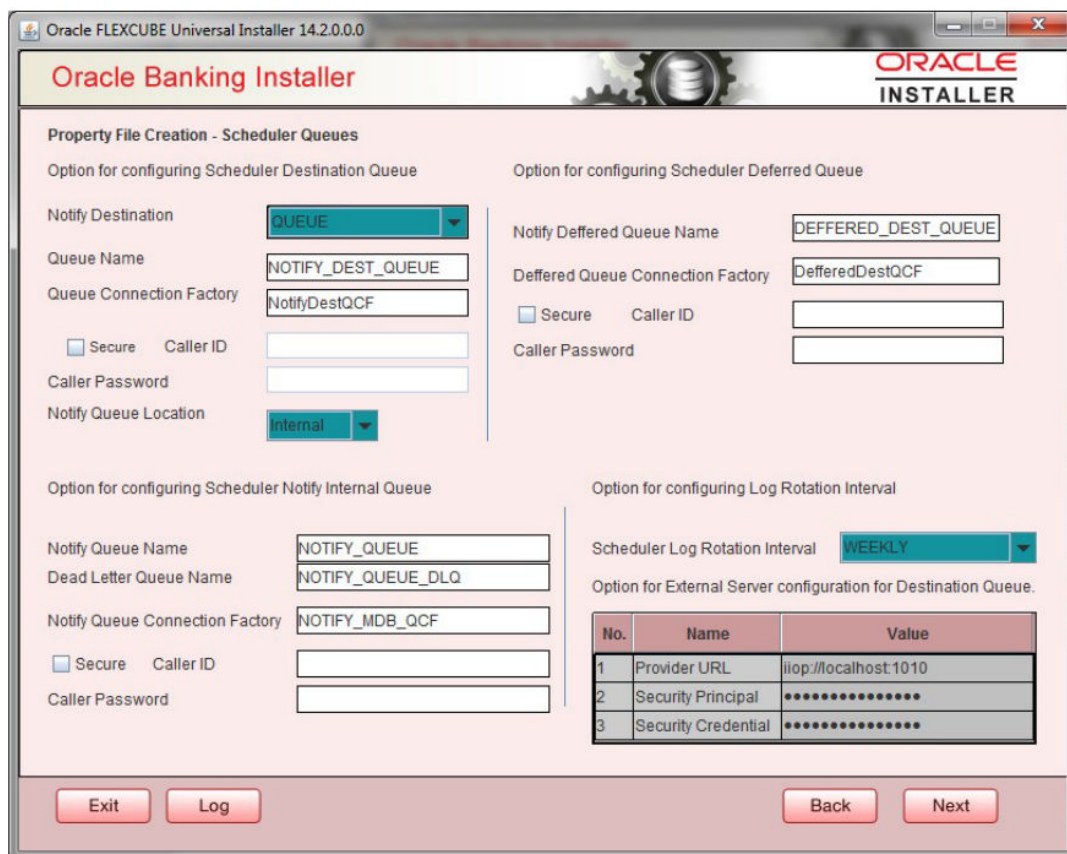
- Internal
- External

Note:

For Oracle WebLogic application server, the notify queue location should be selected as 'Internal'. If you choose 'Internal' as the 'Notify Queue Location', the screen provided in the following step does not get displayed. You will be navigated to next step where you can specify the notify deferred queue name and connection factory.

- If you choose 'External', system displays the following screen:

Figure 2-14 Configuring Scheduler Queues



- Specify the following details of the external queue.

Provider URL - Specify the provide URL (iiop://localhost:1010).

1010 is the default IIOP port.

Application Server	EMS Out Initial Context Factory
Oracle WebLogic	t3://<ip_address>:port For example: t3://10.10.10.10:1010 Here, 10.10.10.10 represents the local host and 1010 to the target server default port (AdminServer/ManagedServer).

Security Principal - Specify the login ID to access the application server.

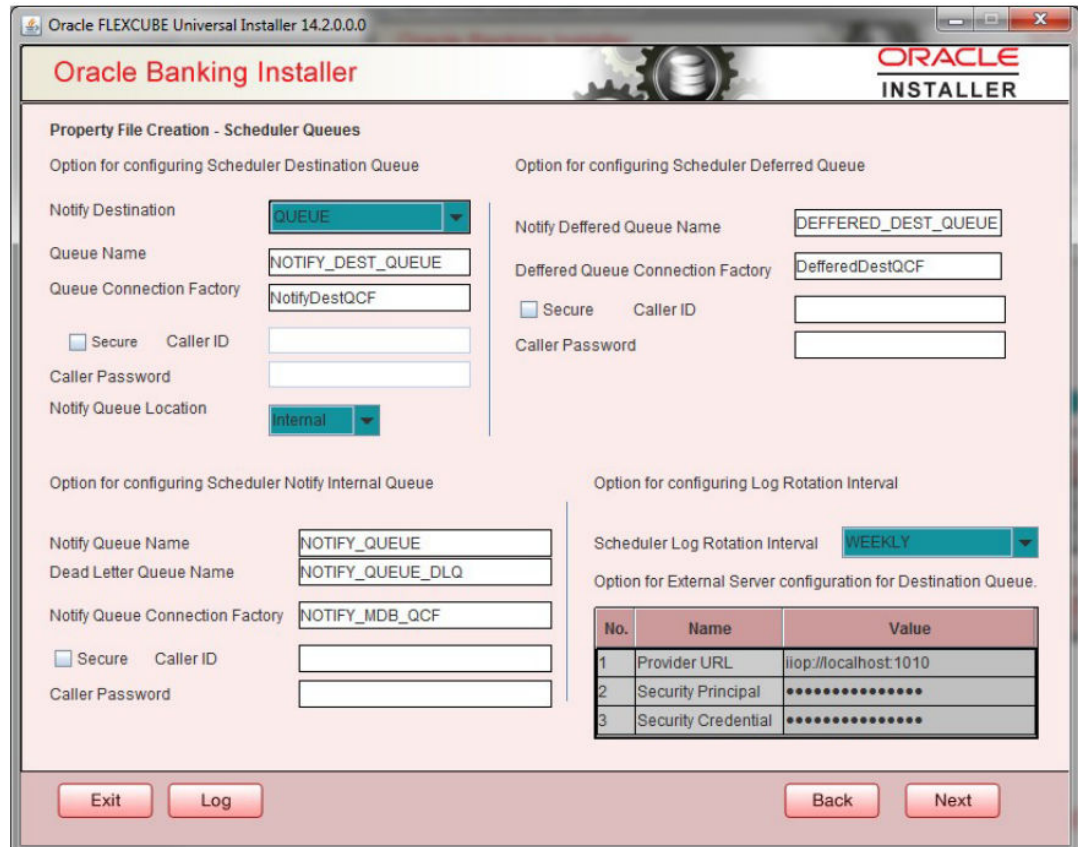
Security Credentials - Specify the password to access the application server.

- Click **Next** to proceed with scheduler configuration.

 **Note:**

If you choose 'Internal' as the 'Notify Queue Location', you will be directly navigated to the following screen. In that case, the installer will not show the screen explained in the previous step.

Figure 2-15 Configuring Scheduler Queues



No.	Name	Value
1	Provider URL	iiop://localhost:1010
2	Security Principal	*****
3	Security Credential	*****

- Specify the following details:

Notify Deferred Queue Name - Set 'DEFERRED_DEST_QUEUE' as the notify differed queue name.

Deferred Queue Connection Factory - Set 'DefferedDestQcf' as the deferred queue connection factory.

Secure - Check this box to indicate that it is a secured deferred queue connection factory. If you check this box, you will be prompted to enter the caller ID and caller password as shown in the following screen.

- Specify the caller ID and caller password for the secured deferred queue connection factory.
- Click **Next** and the following screen is displayed.
- Specify the following details:

Notify Queue Name - Set 'NOTIFY_QUEUE' as the notify queue name.

Dead Letter Queue Name - Set 'NOTIFY_QUEUE_DLQ' as the dead letter queue name.

Notify Queue Connection Factory - Set 'NOTIFY_MDB_QCF' as the notify queue connection factory.

Secure - Check this box to indicate that it is a secured queue connection factory. If you check this box, you will be prompted to enter the caller ID and caller password as shown in the following screen.

10. Specify the caller ID and caller password for the secured notify queue connection factory.
11. Click **Next** and the following screen is displayed.

Setting EMS FTP/FTPS Properties

You will be navigated to the 'Scheduler EMS Properties' screen. Here, you need to set the EMS details.

1. Set the EMS properties:

Figure 2-16 Setting EMS FTP/FTPS Properties

No.	Name	Value
1	Incoming Dead Letter Queue Name	EMS_QUEUE_DLQ
2	Incoming backup Queue Name	EMS_QUEUE_BACK
3	Incoming Queue Connection Factory	EmsQcf
4	Secure Incoming Queue Connection	<input type="checkbox"/>
5	Incoming Queue Caller Id	
6	Incoming Queue Caller Password	
7	Outgoing Dead Letter Queue Name	EMS_QUEUE_DLQ
8	Outgoing Queue Connection Factory	EmsQcf
9	Secure Outgoing Queue Connection	<input type="checkbox"/>
10	Outgoing Queue Caller Id	
11	Outgoing Queue Caller Password	
12	Outgoing Queue Provider URL	t3://10.10.10.10:1010
13	Queue Principal	*****
14	Queue Credential	*****
15	Incoming Queue Name	EMS_INQUEUE
16	Outgoing Queue Name	EMS_OUTQUEUE
17	SFMS Incoming Queue	SFMS_INQUEUE
18	RTGS Incoming Queue	RTGS_INQUEUE
19	EMS Bulker Queue	BULKER_QUEUE

2. Specify the following details:

OutGoing Connection Factory - Specify the name of the outgoing connection factory to which EMS listens. You need to create this connection factory at the application server.

For details on connection factory creation, follow the steps described for creation of notify connection factories.

Incoming Connection Factory - Specify the name of the incoming connection factory to which EMS listens. You need to create this connection factory at the application server.

For details on connection factory creation, follow the steps described for creation of notify connection factories.

Outgoing Queue Name - Specify the name of the outgoing queue for which EMS is configured. By default, this is set as 'NOTIFY_QUEUE_DLQ'.

Incoming Queue Name Specify the name of the incoming queue for which EMS is configured. By default, this is set as 'NOTIFY_QUEUE_DLQ'.

Incoming Backup Queue Name - Specify the name of the incoming backup queue for which EMS is configured.

Outgoing Queue Provider URL - In case EMS OUT MDB is to be configured to queue, you need to specify the URL for outgoing provider based on the application server. By default, the Installer displays the outgoing queue provider URL for Oracle WebLogic.

This value is application server dependent.

The details of Outgoing Queue Provider URL to be used for different application servers are given below:

Application Server	EMS Out Initial Context Factory
Oracle WebLogic	t3://<ip_address>:port E.g.: t3://10.10.10.10:1010 Here, 10.10.10.10 represents the local host and 1010 to the target server default port (AdminServer/ManagedServer)

Queue Principal - If EMS OUT MDB has to be configured to queue, you need to specify the EMS out queue principal. This is the user name for the application server in which the queue is configured.

Queue Credential - If EMS OUT MDB has to be configured to queue, you need to specify the EMS out queue credential. This is the password for the above user name created for application server in which the queue configured.

Incoming Queue Name - Specify the incoming queue name.

Outgoing Queue Name - Specify the outgoing queue name.

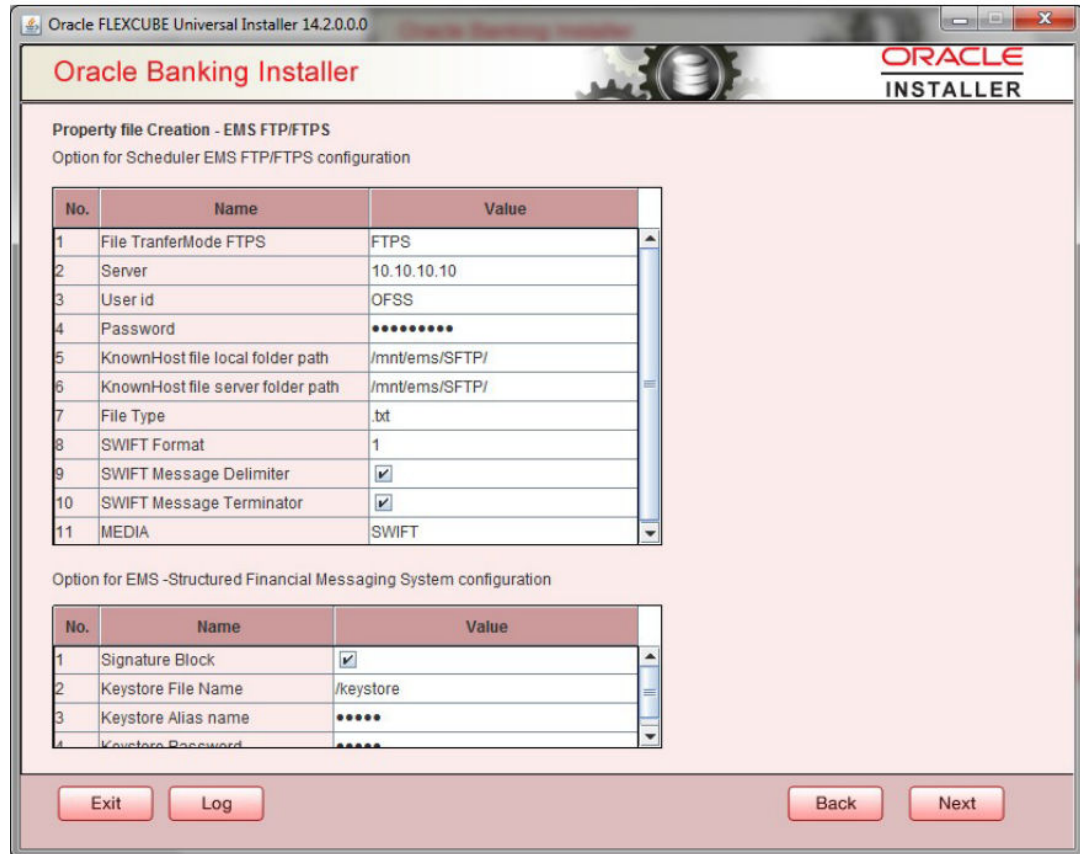
SFMS Incoming Queue - Specify the SFMS Incoming Queue.

RTGS Incoming Queue - Specify the RTGS incoming Queue.

EMS Bulker Queue - Specify the EMS Bulker Queue.

- Once you have specified the above details, click 'Next' and the following screen is displayed:

Figure 2-17 Setting EMS FTP/FTPS Properties



- Specify the following details:

File Transfer Mode FTPS

Specify the mode of transferring files to EMS. Select one of the following:

- FTPS
- SFTP
- HTTP

Server - Specify the server IP address for the selected file transfer mode.

User ID - Specify the user ID to access the server of the file transfer mode.

Password - Specify the password to for the above user ID.

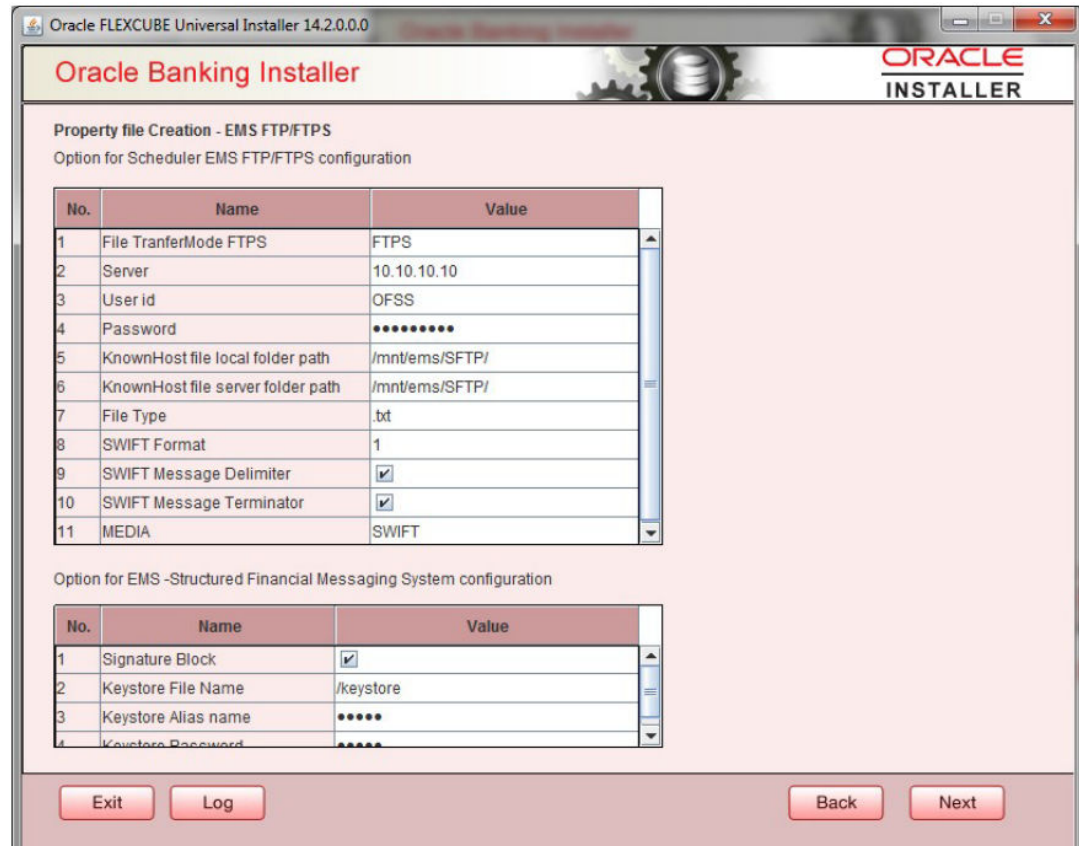
File Type - Specify the type of file that is transferred. By default, the Installer sets it as '.txt'.

SWIFT Message Delimiter - Specify the character which is used as the message delimiter.

SWIFT Message Terminator Specify the character which is used as the message terminator.

- Once you have specified the above details, click **Next**. and the following screen is displayed:

Figure 2-18 Setting EMS FTP/FTPS Properties



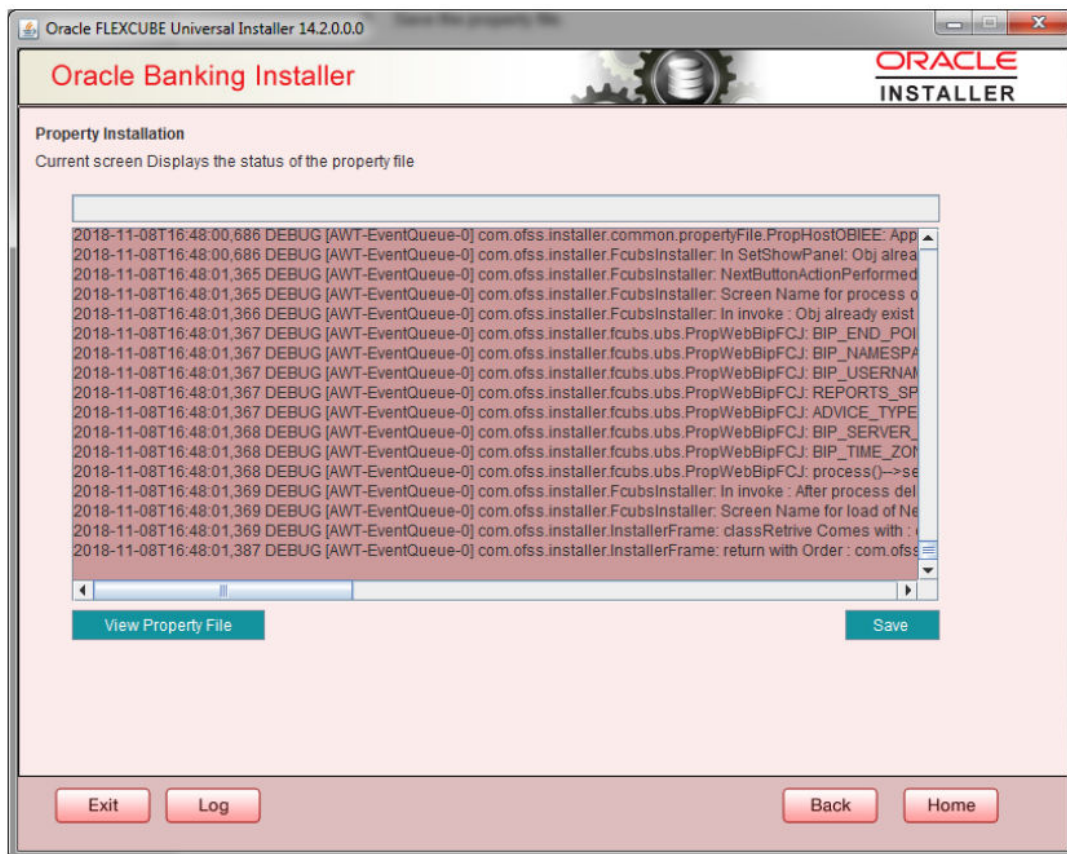
- Specify the following details:
 - Signature Block** - Check this box to enable signature block.
 - Keystore File Name** - Specify the keystore file name.
 - Keystore Alias Name** - Specify the keystore alias name.
 - Keystore Password** - Specify the keystore password.
- Once you have specified the above details, click **Next** and system displays the next screen.

Saving Property File

After completing all the required settings explained above, you need to save the property file.

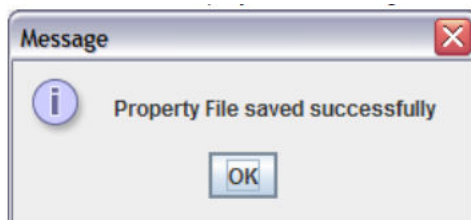
- Save the property file.

Figure 2-19 Saving Property File



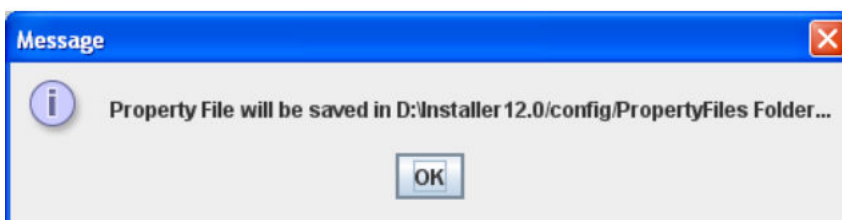
2. You can view the status of property file creation in the above screen. Once the file is saved, the installer displays the following message:

Figure 2-20 Message



3. If you do not use the 'Save' or 'Save As' buttons, the installer will save the properties file in '<InstallerSources>\config\PropertyFiles' folder. In that case, you will see the message below.

Figure 2-21 Message



This completes the properties file creation.