

# Oracle® Banking Payments

## Payments Installer Property File Creation



Release 14.7.0.0.0

F90879-02

February 2025

The Oracle logo, consisting of a solid red square with the word "ORACLE" in white, uppercase, sans-serif font centered within it.

ORACLE®

Oracle Banking Payments Payments Installer Property File Creation, Release 14.7.0.0.0

F90879-02

Copyright © 2017, 2025, Oracle and/or its affiliates.

Contributors: (contributor)

This software and related documentation are provided under a license agreement containing restrictions on use and disclosure and are protected by intellectual property laws. Except as expressly permitted in your license agreement or allowed by law, you may not use, copy, reproduce, translate, broadcast, modify, license, transmit, distribute, exhibit, perform, publish, or display any part, in any form, or by any means. Reverse engineering, disassembly, or decompilation of this software, unless required by law for interoperability, is prohibited.

The information contained herein is subject to change without notice and is not warranted to be error-free. If you find any errors, please report them to us in writing.

If this is software, software documentation, data (as defined in the Federal Acquisition Regulation), or related documentation that is delivered to the U.S. Government or anyone licensing it on behalf of the U.S. Government, then the following notice is applicable:

U.S. GOVERNMENT END USERS: Oracle programs (including any operating system, integrated software, any programs embedded, installed, or activated on delivered hardware, and modifications of such programs) and Oracle computer documentation or other Oracle data delivered to or accessed by U.S. Government end users are "commercial computer software," "commercial computer software documentation," or "limited rights data" pursuant to the applicable Federal Acquisition Regulation and agency-specific supplemental regulations. As such, the use, reproduction, duplication, release, display, disclosure, modification, preparation of derivative works, and/or adaptation of i) Oracle programs (including any operating system, integrated software, any programs embedded, installed, or activated on delivered hardware, and modifications of such programs), ii) Oracle computer documentation and/or iii) other Oracle data, is subject to the rights and limitations specified in the license contained in the applicable contract. The terms governing the U.S. Government's use of Oracle cloud services are defined by the applicable contract for such services. No other rights are granted to the U.S. Government.

This software or hardware is developed for general use in a variety of information management applications. It is not developed or intended for use in any inherently dangerous applications, including applications that may create a risk of personal injury. If you use this software or hardware in dangerous applications, then you shall be responsible to take all appropriate fail-safe, backup, redundancy, and other measures to ensure its safe use. Oracle Corporation and its affiliates disclaim any liability for any damages caused by use of this software or hardware in dangerous applications.

Oracle®, Java, MySQL, and NetSuite are registered trademarks of Oracle and/or its affiliates. Other names may be trademarks of their respective owners.

Intel and Intel Inside are trademarks or registered trademarks of Intel Corporation. All SPARC trademarks are used under license and are trademarks or registered trademarks of SPARC International, Inc. AMD, Epyc, and the AMD logo are trademarks or registered trademarks of Advanced Micro Devices. UNIX is a registered trademark of The Open Group.

This software or hardware and documentation may provide access to or information about content, products, and services from third parties. Oracle Corporation and its affiliates are not responsible for and expressly disclaim all warranties of any kind with respect to third-party content, products, and services unless otherwise set forth in an applicable agreement between you and Oracle. Oracle Corporation and its affiliates will not be responsible for any loss, costs, or damages incurred due to your access to or use of third-party content, products, or services, except as set forth in an applicable agreement between you and Oracle.

# Contents

## 1 Preface

---

Purpose	1-1
Audience	1-1
Documentation Accessibility	1-1
Critical Patches	1-1
Diversity and Inclusion	1-2
Conventions	1-2

## 2 Creating Property File for Oracle Banking Payments Installer

---

Introduction	2-1
Creating PropertyFile	2-1
Default Installation	2-1
Custom Installation	2-13
Setting General Properties	2-14
Setting Single Sign on	2-17
Setting CSS Style	2-20
Configuring Scheduler	2-21
Setting EMS Properties	2-27
Saving Property File	2-30

# 1

## Preface

- [Purpose](#)
- [Audience](#)  
This manual is intended for the following User/User Roles:
- [Documentation Accessibility](#)
- [Critical Patches](#)
- [Diversity and Inclusion](#)
- [Conventions](#)

## Purpose

This guide is designed to help acquaint you with the Oracle Banking Payments application. This guide provides answers to specific features and procedures that the user need to be aware of the module to function successfully.

## Audience

This manual is intended for the following User/User Roles:

**Table 1-1 User Roles**

Role	Function
Implementation & IT Staff	Implementation & Maintenance of the Software

## Documentation Accessibility

For information about Oracle's commitment to accessibility, visit the Oracle Accessibility Program website at <http://www.oracle.com/pls/topic/lookup?ctx=acc&id=docacc>.

### **Access to Oracle Support**

Oracle customers that have purchased support have access to electronic support through My Oracle Support. For information, visit <http://www.oracle.com/pls/topic/lookup?ctx=acc&id=info> or visit <http://www.oracle.com/pls/topic/lookup?ctx=acc&id=trs> if you are hearing impaired.

## Critical Patches

Oracle advises customers to get all their security vulnerability information from the Oracle Critical Patch Update Advisory, which is available at [Critical Patches, Security Alerts and Bulletins](#). All critical patches should be applied in a timely manner to make sure effective security, as strongly recommended by [Oracle Software Security Assurance](#).

## Diversity and Inclusion

Oracle is fully committed to diversity and inclusion. Oracle respects and values having a diverse workforce that increases thought leadership and innovation. As part of our initiative to build a more inclusive culture that positively impacts our employees, customers, and partners, we are working to remove insensitive terms from our products and documentation. We are also mindful of the necessity to maintain compatibility with our customers' existing technologies and the need to ensure continuity of service as Oracle's offerings and industry standards evolve. Because of these technical constraints, our effort to remove insensitive terms is ongoing and will take time and external cooperation.

## Conventions

The following text conventions are used in this document:

Convention	Meaning
<b>boldface</b>	Boldface type indicates graphical user interface elements associated with an action, or terms defined in text.
<i>italic</i>	Italic type indicates book titles, emphasis, or placeholder variables for which you supply particular values.
monospace	Monospace type indicates commands within a paragraph, URLs, code in examples, text that appears on the screen, or text that you enter.

# 2

## Creating Property File for Oracle Banking Payments Installer

- [Introduction](#)
- [Creating PropertyFile](#)

### Introduction

This chapter explains the steps to create property file for Oracle Banking Payments Installer Application. Two property files are created. While creating the fcubs.properties file, the environment property file gets generated.

### Creating PropertyFile

To create the property file for Oracle Banking payments, follow the steps given below:

- [Default Installation](#)
- [Custom Installation](#)
- [Setting General Properties](#)
- [Setting Single Sign on](#)
- [Setting CSS Style](#)
- [Configuring Scheduler](#)
- [Setting EMS Properties](#)
- [Saving Property File](#)

### Default Installation

1. Launch Oracle Banking Payments Installer bat file i.e. **FCUBSInstaller.bat** in Windows.

Figure 2-1 FCUBSInstaller.bat

```
C:\windows\system32\cmd.exe
checking whether Installer is running....
creating a new flag file....
successfully created the flag File.

initializing the errorLevel to 0

Checking Java Home....
Please input Java path [Example: D:\Program Files\Java\jdk1.6.0_17]
@@@@@JAVAHOME NOT DEFINED@@@@@
Enter JAVA HOME Directory:C:/Program Files/Java/jdk1.8.0_144
JAVA_HOME has been set
initializing the errorLevel to 0

Checking Java Home....
Java Home Path has been set successfully.

The system cannot find the path specified.
ojdbc0.jar
@@@@ORACLE HOME NOT DEFINED@@@
Enter Oracle Home Directory:D:/12Client/app/client/siramakr/product/12.1.0/client_1
Oracle Home set
ojdbc7.jar
Oracle Home set successfully
clearing the compiled files....
clearing the jar file.
clearing the compiled classes files.
ojdbc7.jar
Jar to be copied from D:/12Client/app/client/siramakr/product/12.1.0/client_1\jdbc\lib\ojdbc7.jar
Copying jars into the Library...
1 file(s) copied.

Checking logs Folder....
--Current Folder--
--avast--
this InstallationShipment "SOFT"
inside Checking APPSERVER HOME....
appserverhome
```

2. In the first screen, provide the following details:
  - a. **JAVA HOME PATH** - Provide the JDK home path with the latest version.
  - b. **ORACLE HOME PATH** - Provide the Oracle 12C Client Path.
  - c. **APP SERVER HOME PATH** - Provide the app server home path.
3. Launch Oracle Banking Payments Installer sh file i.e. **FCUBSInstaller.sh** in Linux.

Figure 2-2 FCUBSInstaller.sh

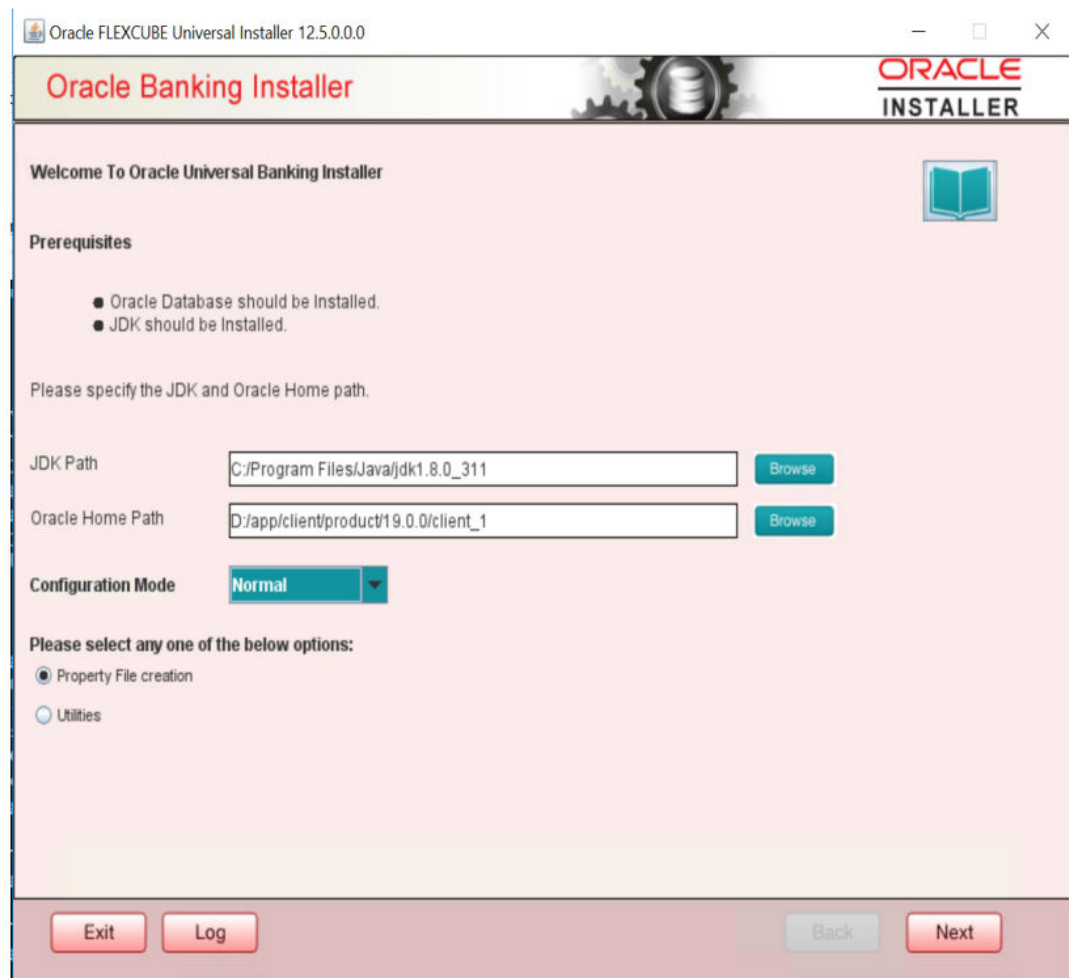
```
JAVA_HOME = /scratch/app/java/jdk1.8.0_111/
.
APPSERVER_HOME = /scratch/app/Oracle/Middleware/Oracle_Home/wlserver/
.
ORACLE_HOME = /scratch/fmw12c/app/fmw12c/product/12.1.0/dbhome_1/
.
-----
Clearing the compiled files....
Clearing the jar file.
Clearing the compiled classes files.
.
Compiling the sources Start....
mkdir: cannot create directory 'classes': File exists
./Library/common/xml-apis-2.11.0.jar:./Library/common/commons-codec-1.10.jar:./Library/common/ojdbc6.jar:./Library/oracle/ucp
.jar:./Library/installer/apache-ant-1.10.1/lib/ant-launcher.jar:./Library/installer/apache-ant-1.10.1/lib/ant.jar:./Library/c
ommon/log4j-api-2.8.1.jar:./Library/common/log4j-core-2.8.1.jar:./Library/common/commons-io-2.5.jar:./Library/common/xercesIm
pl-2.11.0.jar:./Library/installer/yuicompressor-2.4.8.jar:/scratch/app/Oracle/Middleware/Oracle_Home/wlserver//server/lib/web
logic.jar:/scratch/app/java/jdk1.8.0_111/lib/tools.jar:/scratch/app/Oracle/Middleware/Oracle_Home/wlserver//server/lib/weblo
gic.jar:/scratch/app/java/jdk1.8.0_111/lib/tools.jar:
Compiled sources successfully.
.
Building the jar file Starts....
checking for classes folder
classes folder exist
Copying the property files into Classes.
Creating Images directory under Classes.
mkdir: cannot create directory 'classes/Images': File exists
Copying Images from src folder to classes/Images.
Creating META-INF directory under Classes.
mkdir: cannot create directory 'classes/META-INF': File exists
Copying MANIFEST.MF into Classes/META-INF.
Building the jar file.
Building jar is done.
.
Running Installer in UI Mode...
For Running Installer in Silent Mode give /s command line argument to Batch file
.
SOURCE : bash
```

Provide the Necessary details.

After providing these details, INSTALLER-GUI is generated. After that follow the below details.



**Figure 2-3** INSTALLER-GUI



Enter the following details

- **JDK Path** - Maintain home folder path of JDK1.8.
- **Oracle Home** - Maintain home folder path of Oracle Database Client.
- **Configuration Mode** - Select one of the following values:
  - a. **Normal** – For Standalone
  - b. **Application Root** – For Multi-Tenant

Select one of the radio buttons:

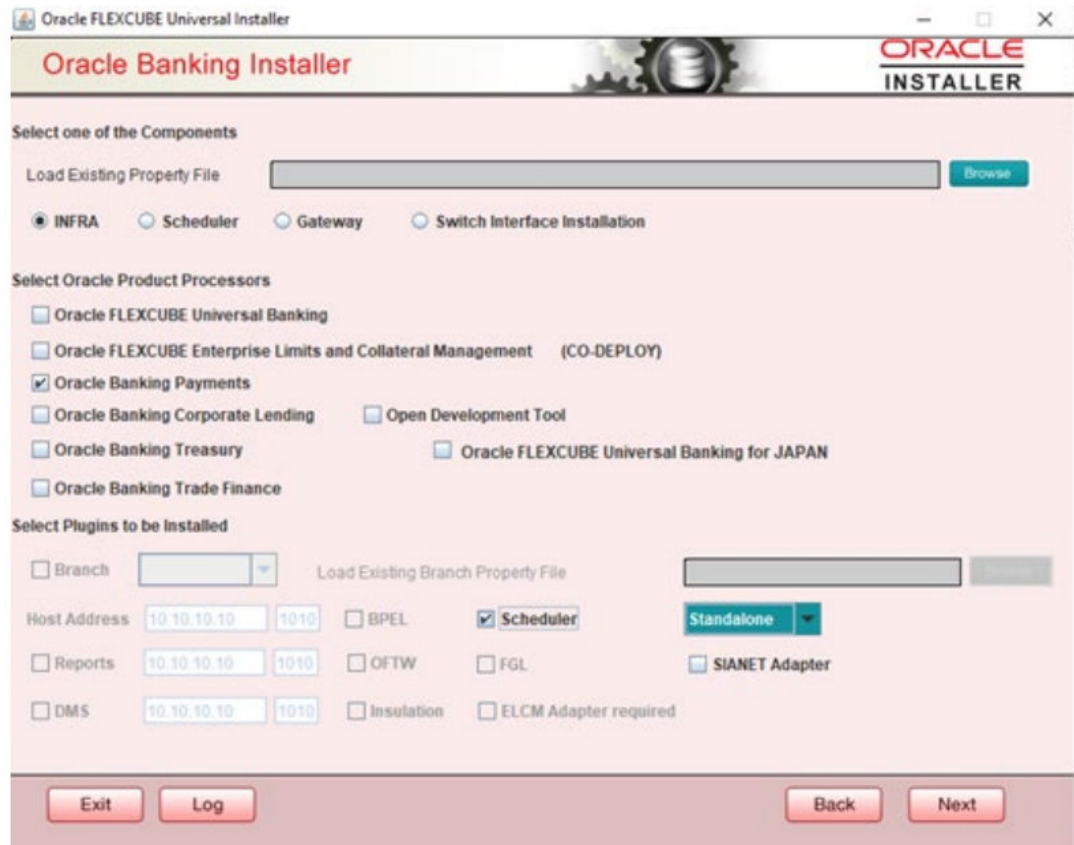
- a. Property File creation
- b. Utilities

Based on the selection, Next screen will be shown .Click Property File creation for the current case.

4. Click **Next** and the following screen is displayed.
  - Select INFRA for Oracle Banking Payments property file creation .To create property file for Scheduler or Gateway please refer the respective property file creation document.

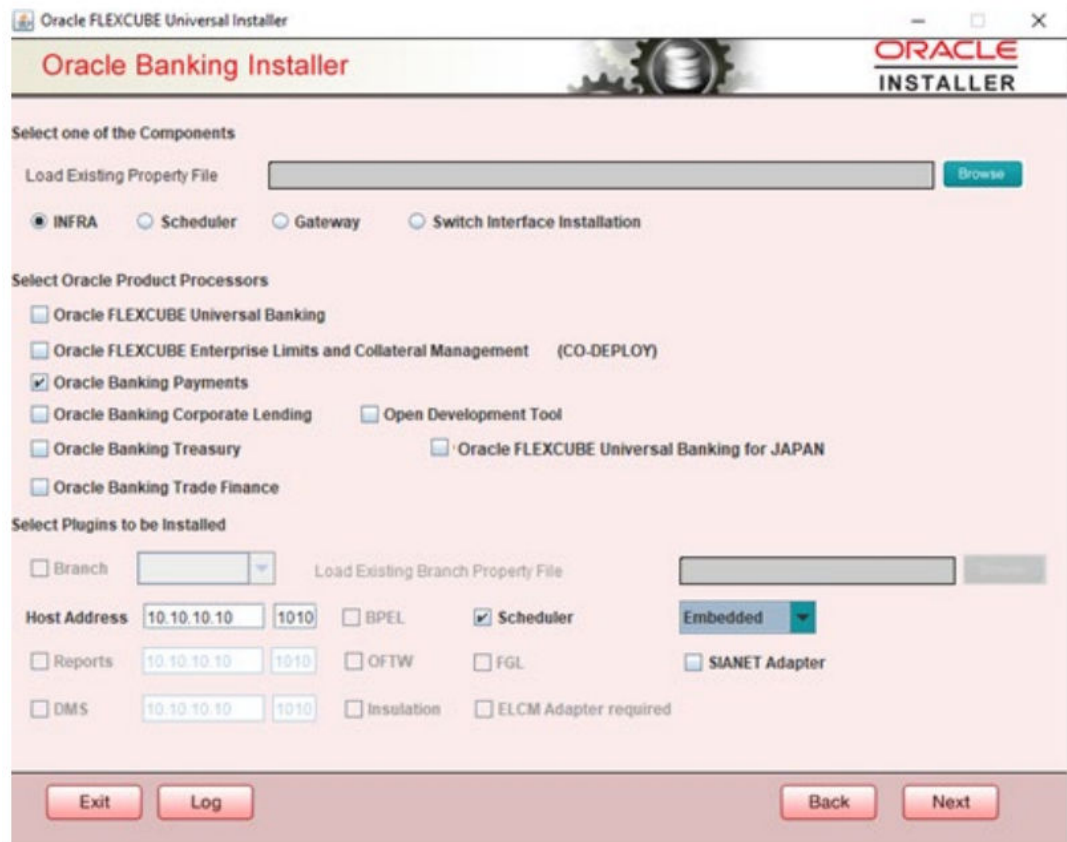
- For Codeployed setup with 'Oracle FLEXCUBE Universal Banking' or 'Oracle FLEXCUBE Universal Banking for 'JAPAN' respective Product Processors should also be checked.

**Figure 2-4 Option 1 – Standalone Scheduler:**



- a. Select the Product processor as Oracle Banking Payments for Payments Property file creation.
- b. Select Scheduler which is Standalone, where Scheduler will be Standalone with EAR.
- c. Select Oracle Banking Payments for Payments Property file creation. Select Scheduler which is Embedded, as we are integrating with EAR.

Figure 2-5 Option 2 – Embedded Scheduler:



5. Click **Next** and the following screen is displayed:

**For Multi-Entity Details**

Figure 2-6 Multi Entity Deployment:

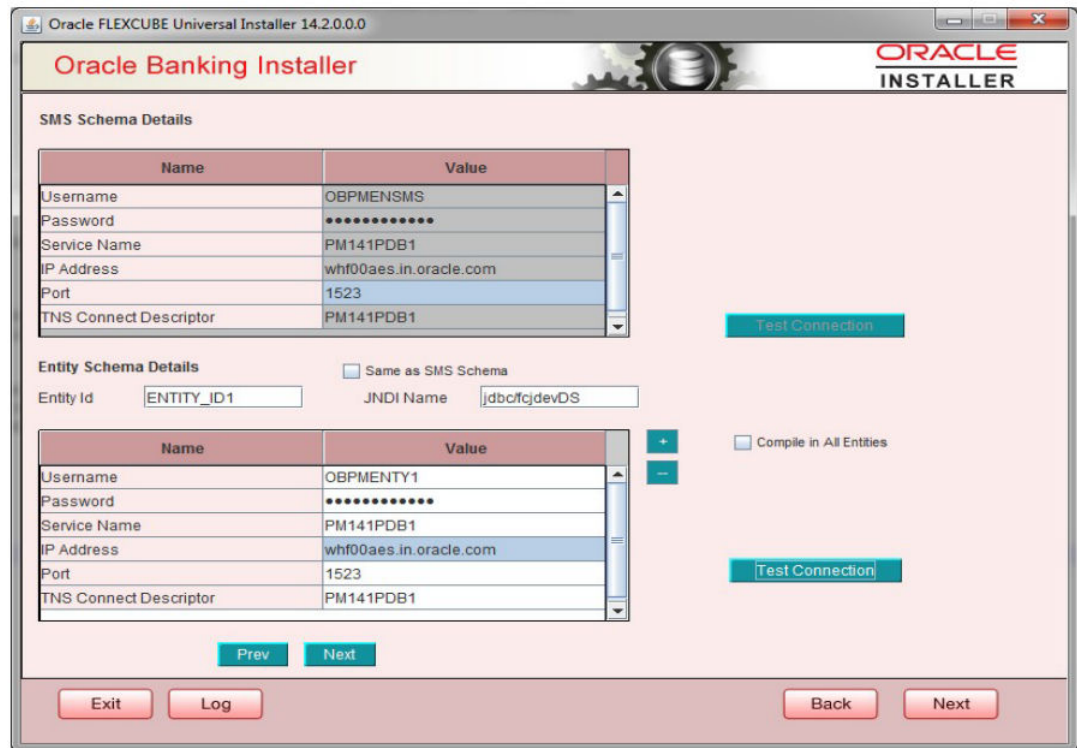
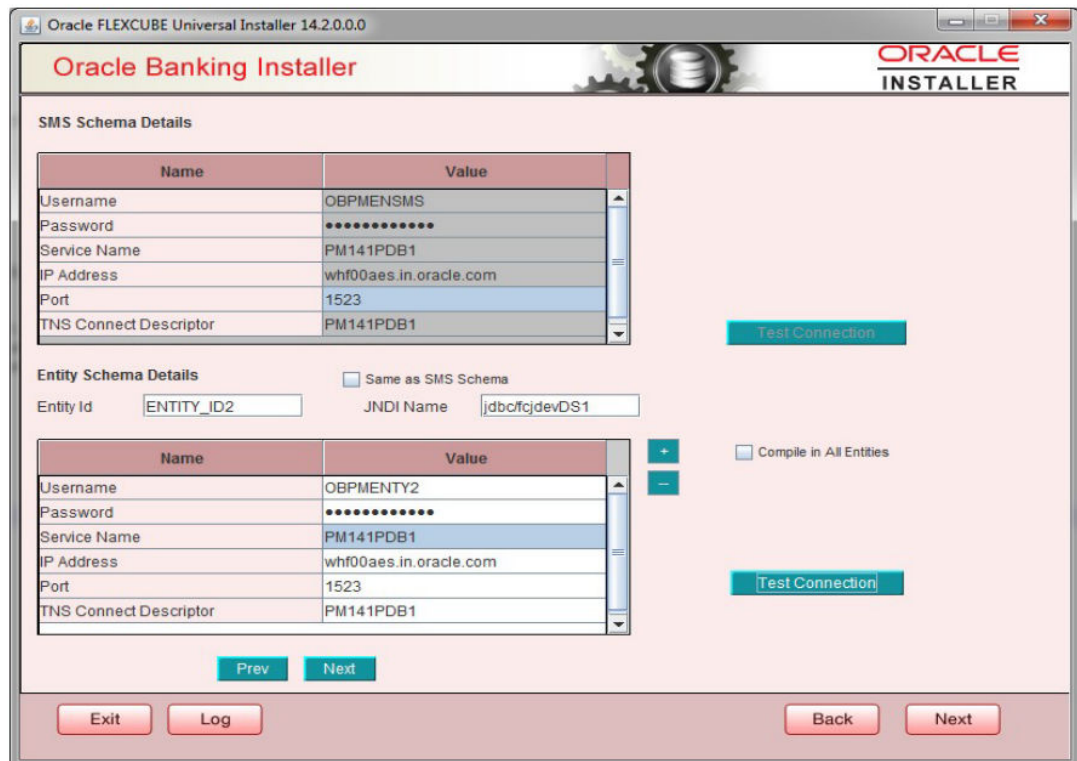


Figure 2-7 Multi Entity Deployment:



**Scenario for More than One Entity, i.e. Multi Entity:**

Provide the SMS Schema Details.

- Post test connection, now give the Entity Schema Details.
- Here Entity Schema is mandatory, atleast minimum one entry should be provided.
- Entity Id value is default i.e. 'ENTITY\_ID1' for first entry.
- Provide the JNDI Name for the ENTITY\_ID1. By default the jndi name is 'jdbc/fcjdevDS'
- Give the Schema Details for the Entity1.
- After providing the First Entity details, click on '+' Add the rows, if any additional Entities are to be setup.
- Now give the details for Entity\_ID2. Here the field is mandatory.
- Provide the schema details and the JNDI name.
- Next and Prev button is to traverse for entity screens.
- Can also add the entities and delete the entities

For Single Schema Details

**Figure 2-8 Option 2 - Single Entity Deployment:**

Oracle FLEXCUBE Universal Installer 14.1.0.0.0

Oracle Banking Installer

ORACLE  
INSTALLER

SMS Schema Details

Name	Value
Username	OBPM1410SC
Password	.....
Service Name	OBPMR2
IP Address	whf00akd.in.oracle.com
Port	1522
TNS Connect Descriptor	OBPMR2

Test Connection

Entity Schema Details  Same as SMS Schema

Entity Id: ENTITY\_ID1 JNDI Name: jdbc/fcjdevDS

Compile in All Entities

Test Connection

Prev Next

Exit Log Back Next

Provide the SMS schema details to capture the credentials which will be used for DBCompilation.

Here Same as SMS Schema Field is 'Y'

- Entity Id value is default i.e. 'ENTITY\_ID1' for first entry.
- Provide the JNDI Name for the ENTITY\_ID1. By default the jndi name is 'jdbc/fcjdevDS'
- Give the Schema Details for the Entity1.
- Here Compile In All Entities Field is 'Y'.

 **Note:**

IP Address should be same as mentioned in the TNSnames.ora

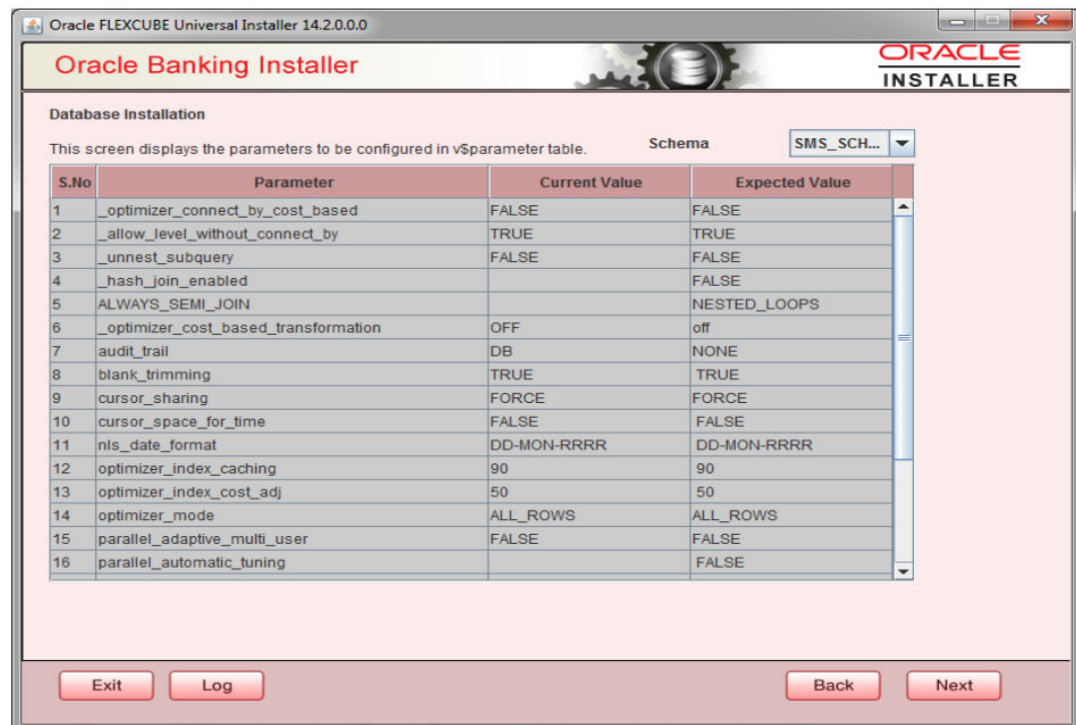
Once the connection is successful env.properties file present in path INSTALLER\SOFT\GUI\logs\env.properties will get updated with schema details in encrypted format.

6. Click on 'Test Connection' button. After Successful connection click on 'Next' button to proceed and below Screen occurs. This Screen displays database parameters listed in v\$parameter table.

This page is Read only used as reference to know the database parameters.

Schema drop down list is provided to verify parameters of SMS and Entity Schemas.

**Figure 2-9 SMS and Entity Schemas**

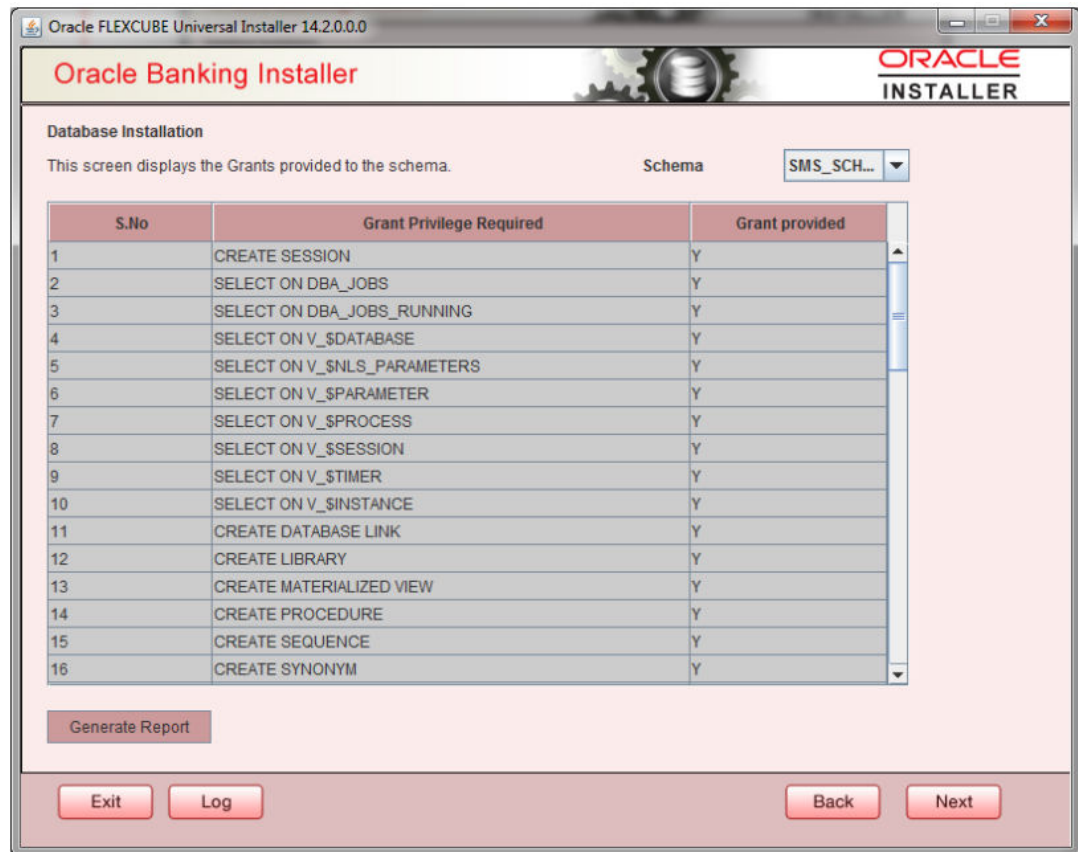


7. Click on **Next** Button. This screen displays the grants provided to the schema. If object compilation is required and the privilege is not given, then you can find that out from this screen.

Schema drop down lists SMS and Entity Schemas. Select Schema and proceed further.



Figure 2-10 SMS and Entity Schemas



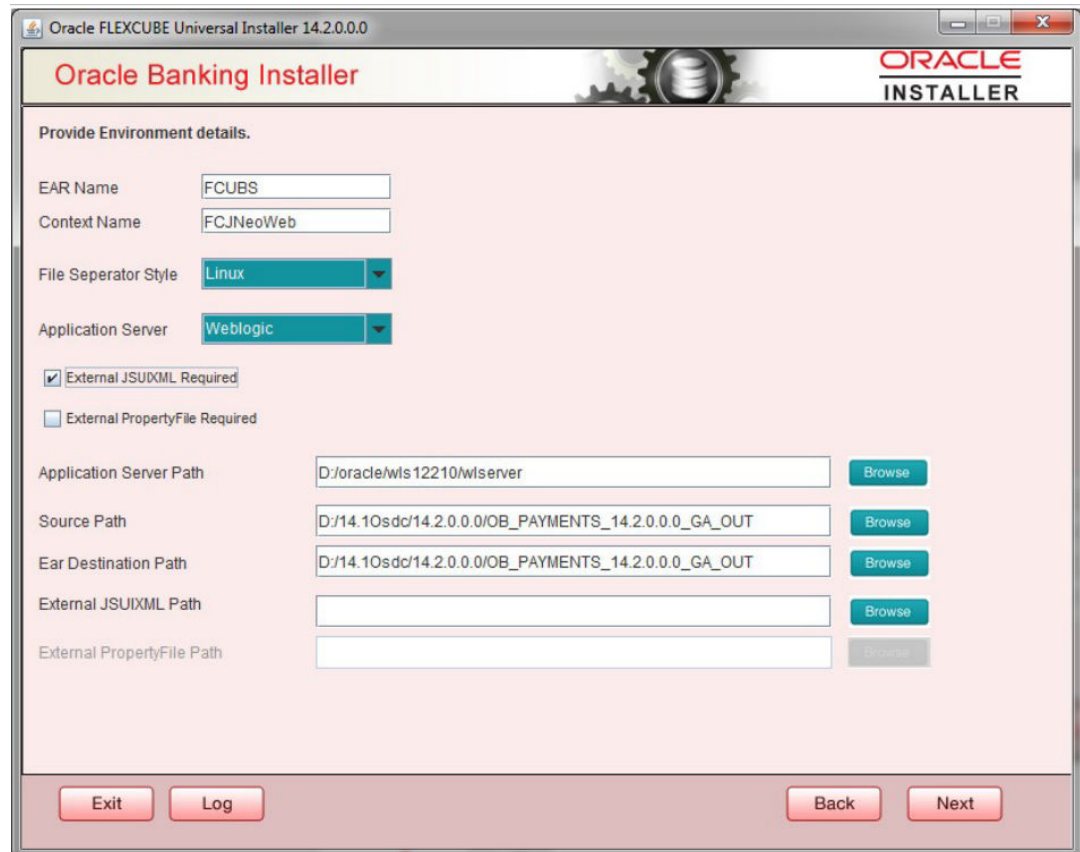
8. Click **Generate Report** button, the installer creates an SQL file 'grantScript.sql' containing the script for granting the privileges in the 'Logs' folder and the following screen is displayed

You can use this file to get the access.

 **Note:**

Only the sys user can execute the file 'grantScript.sql' for granting privileges.

**Figure 2-11** grantScript.sql



**EAR Name** - Specify a name for the Application to be deployed.

You cannot use special characters such as '.' (Dot), ',' (comma), '\$' etc. However, you may use '\_' (underscore). – Applicable for both Windows and Linux.

**Context Name** - Based on the Application type selected, the Installer displays the application context. However, you may modify the default value.

This information will be updated in 'application.xml'. In case of a WebLogic server, this will be updated in 'weblogic.xml'.

**File Separator Style** - Specify the type of file separator (For example: Linux or Windows). Select the appropriate one from the dropdown list. You also need to specify the version of the selected operating system.

**Application Server** - Specify the application server in which you are creating the property file. Select the appropriate one from the adjoining drop-down list. For WebSphere, External JSUIXML Required option is not supported.

**External JSUIXML** - Required Specify whether screen changes will be deployed as External JSUIXML for the application.

EXTERNAL\_JSUIXML\_REQUIRED=Y/N: Depending on requirement

EXTERNAL\_JSUIXML\_REQUIRED=N: JS and UIXML files are included inside the application EAR.

EXTERNAL\_JSUIXML\_REQUIRED=Y: JS and UIXML and HELP files are kept in an external path in the application server.



**External Property File Required** - Specify whether screen changes will be deployed as External fcubs.properties for the application.

EXTERNAL\_PROPERTY\_PATH\_REQUIRED =Y/N: Depending on requirement

EXTERNAL\_PROPERTY\_PATH\_REQUIRED =N: fcubs.properties file is included inside the application EAR.

EXTERNAL\_PROPERTY\_PATH\_REQUIRED =Y: fcubs.properties file is kept in an external path in the application server.

 **Note:**

External property file path should have the property file name also with it. For example: C:\App\fcubs.properties

**Application server path** Provide the Application Server Path.

**Source Path** Provide the source path of the console exec directory. (Mention exact folder name after unzip the source)

**Ear Destination path** Specify the path where Ear needs to be copied after building it using SOFT Installer.

**External JSUIXML Path**

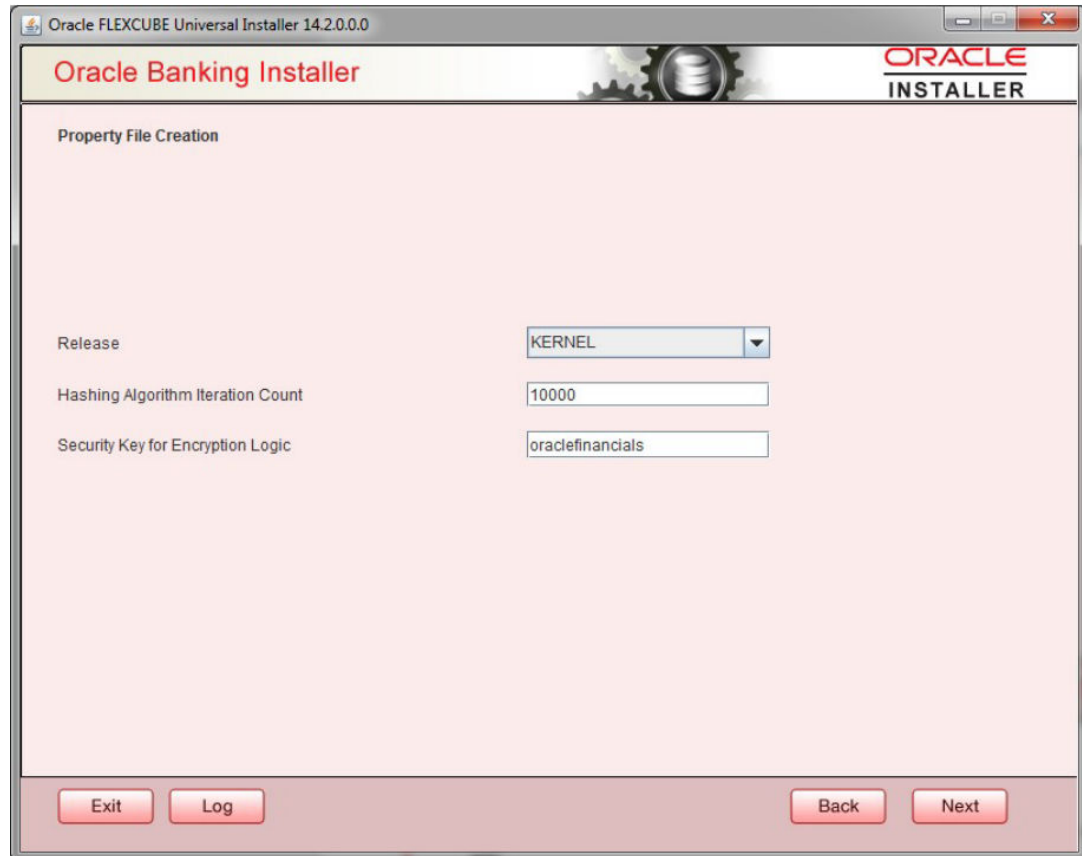
In case External JSUIXML Required option is checked, External JSUIXML path on the application server machine has to be specified here. External JSUIXML required option is supported only for Weblogic Application Server. EXTERNAL\_JSUIXML\_PATH: ex:- /scratch/work\_area/DEV/PM146OSDC/JS\_UIXML\_HELP -this can be any path in the Application server.

**External Property File Path**

In case External Property File required option is checked, External Property File path on the application server machine has to be specified here.

9. Click **Next** to continue and following screen is displayed:

**Figure 2-12 Property File Creation**



**Release** - Specify the release in which you are creating the property file. Default Option would be 'KERNEL'. The options are:

- KERNEL
- MX Cluster
- IT Cluster

Specify the Hashing algorithm iteration count. By default it is 1000.

'Security Key for Encryption Logic' is the key (exact 16 characters) for all encryption logic. By default is 'oraclefinancials'.

## Custom Installation

Custom – All details are to be provided.

Figure 2-13 Custom Installation

Oracle FLEXCUBE Universal Installer 14.2.0.0.0

**Oracle Banking Installer** ORACLE INSTALLER

Property File Creation - DataSource

Please enter DataSource Names

SMS Data Source

Branch Data Source

Scheduler Data Source

PM Online JNDI

PM Batch JNDI

Webservices Provider URL

Host Server URL

Standalone Scheduler URL

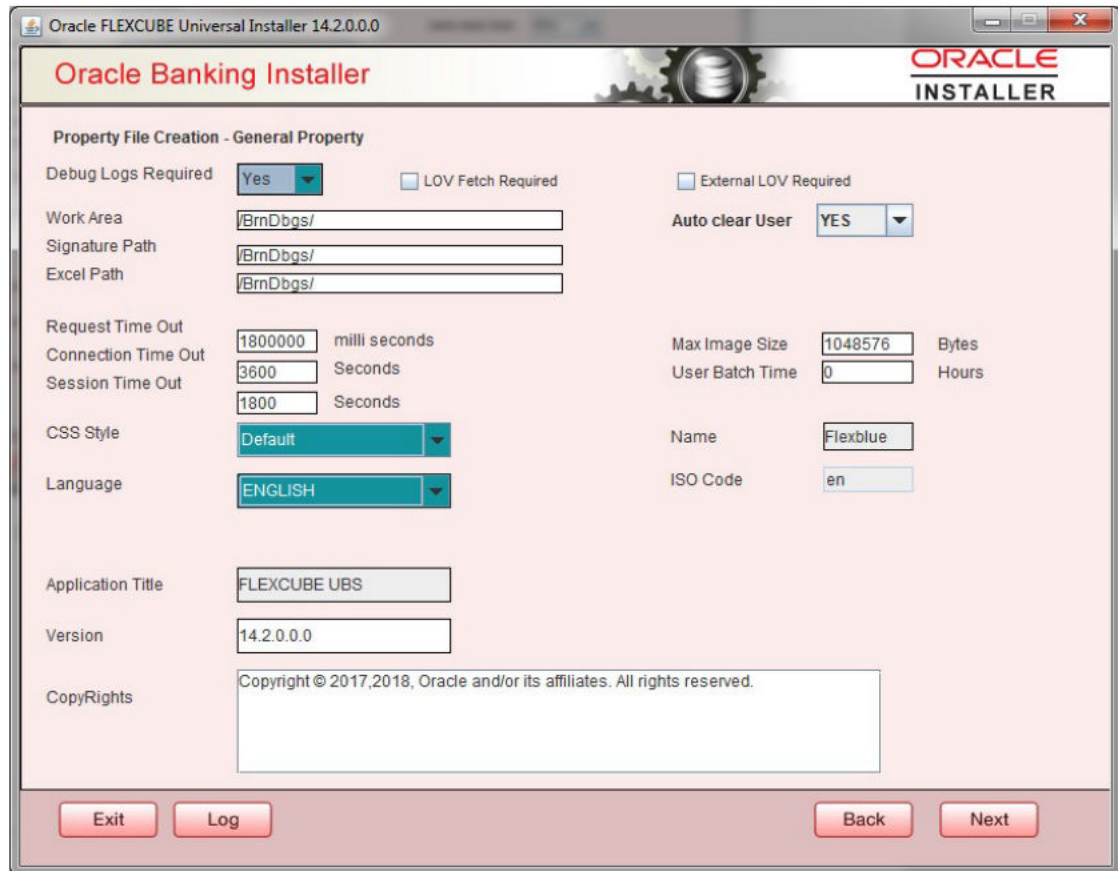
Exit Log Back Next

1. Please enter Data sources required which will be asked as per the product, Plug-in and Component combinations chosen in the first screen.
2. Sms Datasource will be always enabled as it is required for most of the cases.
3. Standalone Scheduler URL field is enabled for Standalone Scheduler Setup and provide the context as 'ScheduleNeoWeb'.

## Setting General Properties

This section describes the process of setting common properties of Oracle FLEXCUBE Payments. The installer displays the 'General Property' screen.

Figure 2-14 Setting General Properties



Specify the following details:

Field	Description
<b>Debug Logs Required</b>	If debug option is required, select 'Yes' from the drop-down list. If not required, select 'No'. By default the value is 'No'. <b>Note:</b> Parameter APPLICATION_WORK_AREA in fcubs.properties will be updated to "Work Area" path provided during installation.
<b>LOV Fetch Required</b>	If you check this box, the option lists in Oracle FLEXCUBE displays the matching values based on the first characters that you enter in a field. If you specify the first three characters of a value to be entered in an option list and tab out, the system displays the complete list of values that are matching the first three characters. If you do not check this, option lists does not show the matching values based on the first few characters. You need to specify the complete value against the field.
<b>External LOV Required</b>	If you check this box, External Lov option for external Limits in FLEXCUBE will be enabled.
<b>Work Area</b>	Specify the work area. For example: D:\BrnDbgs\
<b>Signature Path</b>	Specify the location at which the signature images should be placed.
<b>Excel Path</b>	Specify the location at which the excel files should be generated.

Field	Description
<b>Request Time Out</b>	Specify the database request timeout value in milli seconds. This is the maximum number of seconds the database waits for a query to return the result. By default it is 1800000 milli seconds.
<b>Connection Time Out</b>	Specify the database connection timeout value in seconds. This is the maximum number of seconds the application waits for a connection to the database to open.
<b>Session Time Out</b>	Enter the session time out value in seconds. This is the maximum number of seconds during which the application gets active without any user intervention. If there is no user intervention continuously for the duration specified here, the user session gets expire.
<b>Max Image Size</b>	Specifies the maximum image size that can be uploaded. The default size is 1048576 bytes.
<b>CSS Style</b>	Specify the CSS style to be used from the adjoining drop down list. You can select one of the following CSS styles: <ul style="list-style-type: none"><li>• Default – select this to apply the default style provided along with Oracle FLEXCUBE</li><li>• Custom – select this to apply a custom style</li></ul>
<b>Name</b>	Specify the name of the CSS style. Once you have specified the above details, click 'Next'
<b>Language</b>	Specify the language in which you wish to see Oracle FLEXCUBE UBS. ENGLISH is the default language. However, based on the requirement, you can set a different language. Select the appropriate one from the drop-down list. Based on the language selected, the installer displays the ISO code.
<b>Application Title</b>	Specify the application title. For example: FLEXCUBE UBS
<b>Version</b>	Specify the application version. For example: 14.6.0.0.0
<b>CopyRights</b>	Specify the copyright details. For example: Copyright © 2017, 2020 Oracle and/or its affiliates. All rights reserved.

## Setting Single Sign on

Figure 2-15 Setting Single Sign on

**Oracle Banking Installer** **ORACLE**  
INSTALLER

**Property File Creation - Single Sign on**

SSO Required  SSO Type: **DEFAULT** ▼

SSO KEY: **DN**

Authentication details maintained external to FLEXCUBE

External Password Required  Authentication Type: **MSAD** ▼

External User Login Required

Platform Security SMS Security Key: **oraclefinancials**

**Option to provide LDAP server details**

No.	Name	Value
1	LDAP SERVER URL	LDAP://10.10.10.10:111
2	LDAP SSL ENABLED	<input type="checkbox"/>
3	SECURITY AUTHENTICATION TYPE	Simple
4	DOMAIN NAME	flexcube.com
5	LDAP SERVER TIMEOUT	0

**Option to provide SAML details**

No.	Name	Value
1	SAML CERTIFICATE PATH	D:\Security\SAML_Implementation\TestFiles\certstore\b...
2	SAML CERTIFICATE PASSWORD	*****
3	SAML CERTIFICATE ALIAS	barc
4	SAML VALID AUDIENCE	bPAID_BWSIT

Exit Log Back Next

- Specify the following details:

Field	Description
<b>SSO Required</b>	Check this box to enable single sign-on (SSO). If you check this box, you need to enter the SSO Key and the SSO Type.
<b>SSO Key</b>	Specify the SSO key. If you have checked the box 'SSO Required', it is mandatory to specify the SSO key. If you have checked the box 'SSO required', the Installer skips the following two screens and directly navigate to the SSL screen shown below in this manual. If you have not checked the box 'SSO Required', then on clicking the 'Next' button, the following screen is displayed:

Figure 2-16 Single Sign on

**Oracle Banking Installer** **ORACLE**  
INSTALLER

**Property File Creation - Single Sign on**

SSO Required  SSO Type: DEFAULT

SSO KEY: DN

Authentication details maintained external to FLEXCUBE

External Password Required  Authentication Type: MSAD (selected), MSAD, LDAP

External User Login Required

Platform Security SMS Security Key: oraclefinancials

**Option to provide LDAP server details**

No.	Name	Value
1	LDAP SERVER URL	LDAP://10.10.10.10:111
2	LDAP SSL ENABLED	<input type="checkbox"/>
3	SECURITY AUTHENTICATION TYPE	Simple
4	DOMAIN NAME	flexcube.com
5	LDAP SERVER TIMEOUT	0

**Option to provide SAML details**

No.	Name	Value
1	SAML CERTIFICATE PATH	D:\Security\SAML_Implementation\TestFiles\certstore\b...
2	SAML CERTIFICATE PASSWORD	*****
3	SAML CERTIFICATE ALIAS	barc
4	SAML VALID AUDIENCE	bPAID_BWSIT

Buttons: Exit, Log, Back, Next

Field	Description
<b>External Password Required</b>	<p>Check this box to allow the user-login using MSAD/LDAP password irrespective of the user ID. If you check this box, the user ID can be either the MSAD/LDAP user ID or the Oracle Banking Payments application user ID. And the password can be MSAD/LDAP server password only.</p> <p>By default, this check box is unchecked. However, you can change this.</p> <p>If you do not check this box, the installer skips the following screen and directly navigates you to the SSL screen shown below in this manual.</p> <p>If you check the box, then click 'Next' and the following screen is displayed:</p>
<b>External User Login Required</b>	<p>Check this box to enable user login using MSAD/LDAP user ID. If you check this box, the user can login using MSAD/LDAP server user ID as well as using Oracle Banking Payments application user ID.</p>

Figure 2-17 Single Sign on

**Oracle Banking Installer** **ORACLE**  
**INSTALLER**

**Property File Creation - Single Sign on**

SSO Required  SSO Type: **DEFAULT**

SSO KEY: **DN**

Authentication details maintained external to FLEXCUBE

External Password Required  Authentication Type: **MSAD** (dropdown menu also shows MSAD, LDAP)

External User Login Required

Platform Security SMS Security Key: **oraclefinancials**

**Option to provide LDAP server details**

No.	Name	Value
1	LDAP SERVER URL	LDAP://10.10.10.10:111
2	LDAP SSL ENABLED	<input type="checkbox"/>
3	SECURITY AUTHENTICATION TYPE	Simple
4	DOMAIN NAME	flexcube.com
5	LDAP SERVER TIMEOUT	0

**Option to provide SAML details**

No.	Name	Value
1	SAML CERTIFICATE PATH	D:\Security\SAML_implementation\TestFiles\certstore\b...
2	SAML CERTIFICATE PASSWORD	*****
3	SAML CERTIFICATE ALIAS	barc
4	SAML VALID AUDIENCE	bPAID_BWSIT

Buttons: Exit, Log, Back, Next

If you do not check this box, the user can login using FCUBS user ID only. By default, this check box is unchecked. However, you can change this.

**Note:**

Authentication Type' is enabled if one of the above check boxes is checked.

Field	Description
<b>Authentication Type</b>	Select the authentication type from the adjoining drop-down list. This is the type of external server that is used. Select one of the following options: <ul style="list-style-type: none"> <li>MSAD (Microsoft Active Directory)</li> <li>LDAP (Lightweight Directory Access Protocol)</li> <li>By default, 'MSAD' is selected; however, you can change it.</li> </ul>
<b>Platform Security</b>	Platform Security option is available only for Weblogic and is not supported for Websphere. If the Platform Security box is checked for weblogic, the symmetric key is not stored in the property file for security reasons. If the Platform Security box is unchecked, the symmetric key is available in the property file and a warning message is displayed to the user.
<b>SMS Security Key</b>	This field is used to capture the security key value if the Platform Security check box is checked.



## Setting CSS Style

1. Specify the following details:

### CSS Style

Specify the CSS style to be used from the adjoining drop down list. You can select one of the following CSS styles:

Default – select this to apply the default style provided along with Oracle Banking Payments

Custom – select this to apply a custom style

### Name

Specify the name of the CSS style.

2. Once you have specified the above details, click **Next**.

**Figure 2-18 Setting CSS Style**

Oracle FLEXCUBE Universal Installer 14.2.0.0

**Oracle Banking Installer** ORACLE INSTALLER

Property File Creation - SMTPS/Branch/DMS

Option for Mail configuring using SMTPS Protocol

No.	Name	Value
1	Host	samplemail.com
2	User Id	infra
3	User Password	*****
4	JNDI Name	mail/FCUBSMail

Option for modifying the Branch properties

No.	Name	Value
1	Date Separator	-
2	WorkFlow Frequency	6000
3	Compress Request	<input checked="" type="checkbox"/>

Option for modifying the DMS/IPM property values

No.	Name	Value
1	Login Service Address	http://10.10.10.10:1010/imaging/ws/LoginService
2	Document Service Address	http://10.10.10.10:1010/imaging/ws/DocumentService
3	Document Content Service Address	http://10.10.10.10:1010/imaging/ws/DocumentContentService
4	IPM User Name	testuser
5	IPM Password	*****

Exit Log Back Next

3. Specify the following details.

Field	Description
<b>Host</b>	Specify the SMTP host name.
<b>User ID</b>	Specify the user ID.
<b>User Password</b>	Specify the user password.

Field	Description
JNDI Name	Specify the JNDI name.

- Once you have specified the above details, click 'Next' and system displays the next screen. Applicable for Single Schema Setup i.e. Option 2.

## Configuring Scheduler

- Click **Next** and the following screen is displayed. Specify the following details:

**Figure 2-19 Configuring Scheduler**

Field	Description
<b>Notify Destination</b>	Specify the notify destination. Select one of the following options: <ul style="list-style-type: none"> <li>QUEUE</li> <li>TOPIC</li> </ul>
<b>Queue Name</b>	Set 'NOTIFY_DEST_QUEUE' as the destination queue name.
<b>Queue Connection Factory</b>	Set 'NotifyDestTCF' as the queue connection factory.
<b>Secure</b>	Check this box to indicate that it is a secured queue connection factory. If you check this box, you will be prompted to specify the caller ID and caller password as shown in the following screen.

Field	Description
<b>Notify Queue Location</b>	<p>Specify the notify queue location. Select one of the following options:</p> <ul style="list-style-type: none"> <li>Internal</li> <li>External</li> </ul> <p><b>Note:</b></p> <p>For Oracle WebLogic application server, the notify queue location should be selected as 'Internal'. If you choose 'Internal' as the 'Notify Queue Location', the screen provided in the following step is not displayed. You will be navigated to next step where you can specify the notify deferred queue name and connection factory.</p>

- If you choose 'External', system displays the following screen:

**Figure 2-20 Configuring Scheduler**

The screenshot shows the Oracle Banking Installer window titled "Oracle FLEXCUBE Universal Installer 14.2.0.0.0". The main window is titled "Oracle Banking Installer" and "ORACLE INSTALLER". The current screen is "Property File Creation - Scheduler Queues".

The screen is divided into several sections for configuration:

- Option for configuring Scheduler Destination Queue:**
  - Notify Destination: **QUEUE** (dropdown)
  - Queue Name: **NOTIFY\_DEST\_QUEUE** (text box)
  - Queue Connection Factory: **NotifyDestQCF** (text box)
  - Secure
  - Caller ID: (text box)
  - Caller Password: (text box)
  - Notify Queue Location: **Internal** (dropdown)
- Option for configuring Scheduler Deferred Queue:**
  - Notify Deferred Queue Name: **DEFERRED\_DEST\_QUEUE** (text box)
  - Deferred Queue Connection Factory: **DeferredDestQCF** (text box)
  - Secure
  - Caller ID: (text box)
  - Caller Password: (text box)
- Option for configuring Scheduler Notify Internal Queue:**
  - Notify Queue Name: **NOTIFY\_QUEUE** (text box)
  - Dead Letter Queue Name: **NOTIFY\_QUEUE\_DLQ** (text box)
  - Notify Queue Connection Factory: **NOTIFY\_MDB\_QCF** (text box)
  - Secure
  - Caller ID: (text box)
  - Caller Password: (text box)
- Option for configuring Log Rotation Interval:**
  - Scheduler Log Rotation Interval: **WEEKLY** (dropdown)
- Option for External Server configuration for Destination Queue:**

No.	Name	Value
1	Provider URL	iiop://localhost:1010
2	Security Principal	*****
3	Security Credential	*****

At the bottom of the window, there are buttons for "Exit", "Log", "Back", and "Next".

- Specify the following details of the external queue.

Field	Description
Specify the provide URL (iiop://localhost:1010). 1010 is the default IIOp port. <b>Application Server</b>	<b>EMS Out Initial Context Factory</b>
<b>Oracle WebLogic</b>	t3://<ip_address>:port E.g.: t3://10.10.10.10:1010 Here, 10.10.10.10 represents the local host and 1010 to the target server default port (AdminServer/ManagedServer).
<b>IBM WebSphere</b>	iiop://<ip_address>:port E.g.: iiop://10.10.10.10:1010 Here, 1010 represents the default iiop port
<b>Security Principal</b>	Specify the login ID to access the application server.
<b>Security Credentials</b>	Specify the password to access the application server.

- Click **Next** to proceed with scheduler configuration.

 **Note:**

If you choose 'Internal' as the 'Notify Queue Location', you will be directly navigated to the following screen. In that case, the installer will not show the screen explained in the previous step.

- Specify the following details:

**Notify Deferred Queue Name** - Set 'DEFERRED\_DEST\_QUEUE' as the notify differed queue name.

**Deferred Queue Connection Factory** - Set 'DeferredDestQcf' as the deferred queue connection factory.

**Secure** - Check this box to indicate that it is a secured deferred queue connection factory. If you check this box, you will be prompted to enter the caller ID and caller password as shown in the following screen.

Figure 2-21 Configuring Scheduler

The screenshot shows the Oracle Banking Installer window titled "Oracle FLEXCUBE Universal Installer 14.2.0.0.0". The main window title is "Oracle Banking Installer" with the Oracle logo and "INSTALLER" text. The content area is titled "Property File Creation - Scheduler Queues".

There are four main configuration sections:

- Option for configuring Scheduler Destination Queue:**
  - Notify Destination: **QUEUE** (dropdown)
  - Queue Name: **NOTIFY\_DEST\_QUEUE** (text box)
  - Queue Connection Factory: **NotifyDestQCF** (text box)
  - Secure Caller ID: (text box)
  - Caller Password: (text box)
  - Notify Queue Location: **Internal** (dropdown)
- Option for configuring Scheduler Deferred Queue:**
  - Notify Deferred Queue Name: **DEFFERED\_DEST\_QUEUE** (text box)
  - Deffered Queue Connection Factory: **DefferedDestQCF** (text box)
  - Secure Caller ID: (text box)
  - Caller Password: (text box)
- Option for configuring Scheduler Notify Internal Queue:**
  - Notify Queue Name: **NOTIFY\_QUEUE** (text box)
  - Dead Letter Queue Name: **NOTIFY\_QUEUE\_DLQ** (text box)
  - Notify Queue Connection Factory: **NOTIFY\_MDB\_QCF** (text box)
  - Secure Caller ID: (text box)
  - Caller Password: (text box)
- Option for configuring Log Rotation Interval:**
  - Scheduler Log Rotation Interval: **WEEKLY** (dropdown)

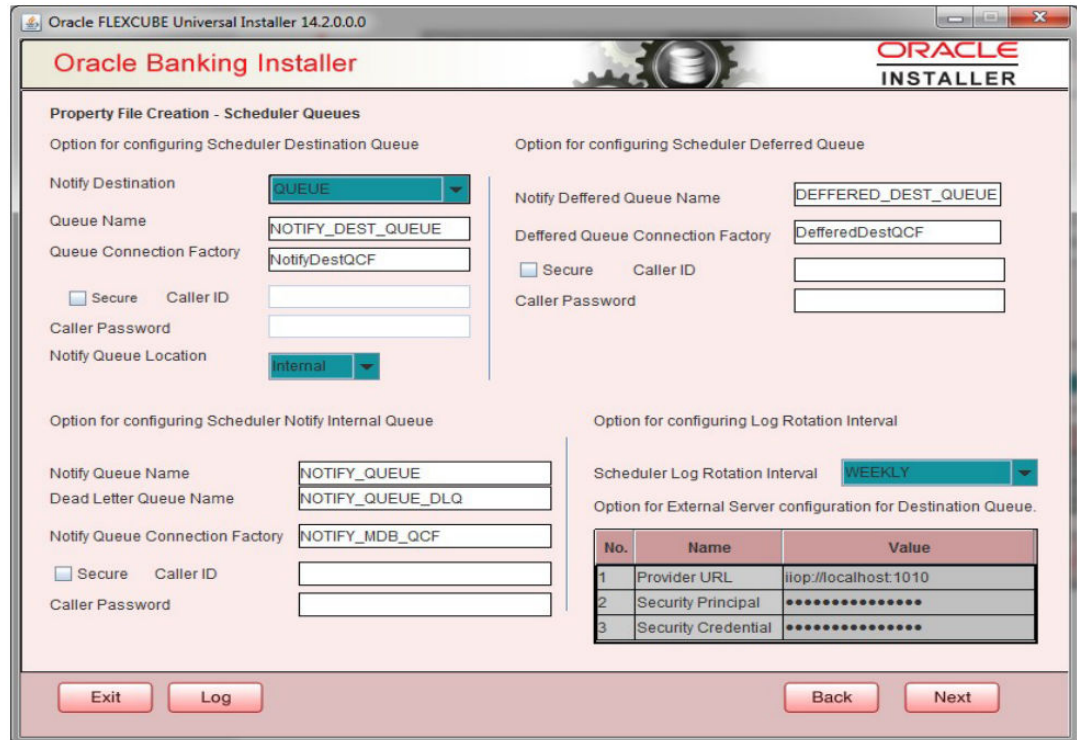
Below these sections is the "Option for External Server configuration for Destination Queue" section, which contains a table:

No.	Name	Value
1	Provider URL	iiop://localhost:1010
2	Security Principal	*****
3	Security Credential	*****

At the bottom of the window, there are four buttons: "Exit", "Log", "Back", and "Next".

- Click 'Next' and the following screen is displayed:

**Figure 2-22 Configuring Scheduler**



7. Specify the following details:

**Notify Queue Name** - Set 'NOTIFY\_QUEUE' as the notify queue name.

**Dead Letter Queue Name** - Set 'NOTIFY\_QUEUE\_DLQ' as the dead letter queue name.

**Notify Queue Connection Factory** - Set 'NOTIFY\_MDB\_QCF' as the notify queue connection factory.

**Secure** - Check this box to indicate that it is a secured queue connection factory. If you check this box, you will be prompted to enter the caller ID and caller password as shown in the following screen.

8. Click 'Next' and the following screen is displayed:



Figure 2-23 Configuring Scheduler

No.	Name	Value
1	Incoming Dead Letter Queue Name	EMS_QUEUE_DLQ
2	Incoming backup Queue Name	EMS_QUEUE_BACK
3	Incoming Queue Connection Factory	EmsQcf
4	Secure Incoming Queue Connection	<input type="checkbox"/>
5	Incoming Queue Caller Id	
6	Incoming Queue Caller Password	
7	Outgoing Dead Letter Queue Name	EMS_QUEUE_DLQ
8	Outgoing Queue Connection Factory	EmsQcf
9	Secure Outgoing Queue Connection	<input type="checkbox"/>
10	Outgoing Queue Caller Id	
11	Outgoing Queue Caller Password	
12	Outgoing Queue Provider URL	t3://10.10.10.10:1010
13	Queue Principal	*****
14	Queue Credential	*****
15	Incoming Queue Name	EMS_INQUEUE
16	Outgoing Queue Name	EMS_OUTQUEUE
17	SFMS Incoming Queue	SFMS_INQUEUE
18	RTGS Incoming Queue	RTGS_INQUEUE
19	EMS Bulker Queue	BULKER_QUEUE

Specify the following details:

**Incoming Dead Letter Queue Name** - Set 'EMS\_QUEUE\_DLQ' as the incoming dead letter queue name.

**Incoming Backup Queue Name** - Set 'EMS\_QUEUE\_BACK' as the incoming backup queue name.

**Incoming Queue Connection Factory** - Set 'EmsQcf' as the incoming queue connection factory.

**Secure Incoming Queue Connection** - Check this box to indicate that it is a secured queue connection.

**Incoming Queue Caller ID** - Specify the caller ID for the secured queue connection.

**Incoming Queue Caller Password** - Specify the caller password for the secured queue connection.

**Outgoing Dead Letter Queue Name** - Set 'EMS\_QUEUE\_DLQ' as outgoing dead letter queue name.

**Outgoing Queue Connection Factory** - Set 'EmsQcf' as the outgoing queue connection factory.

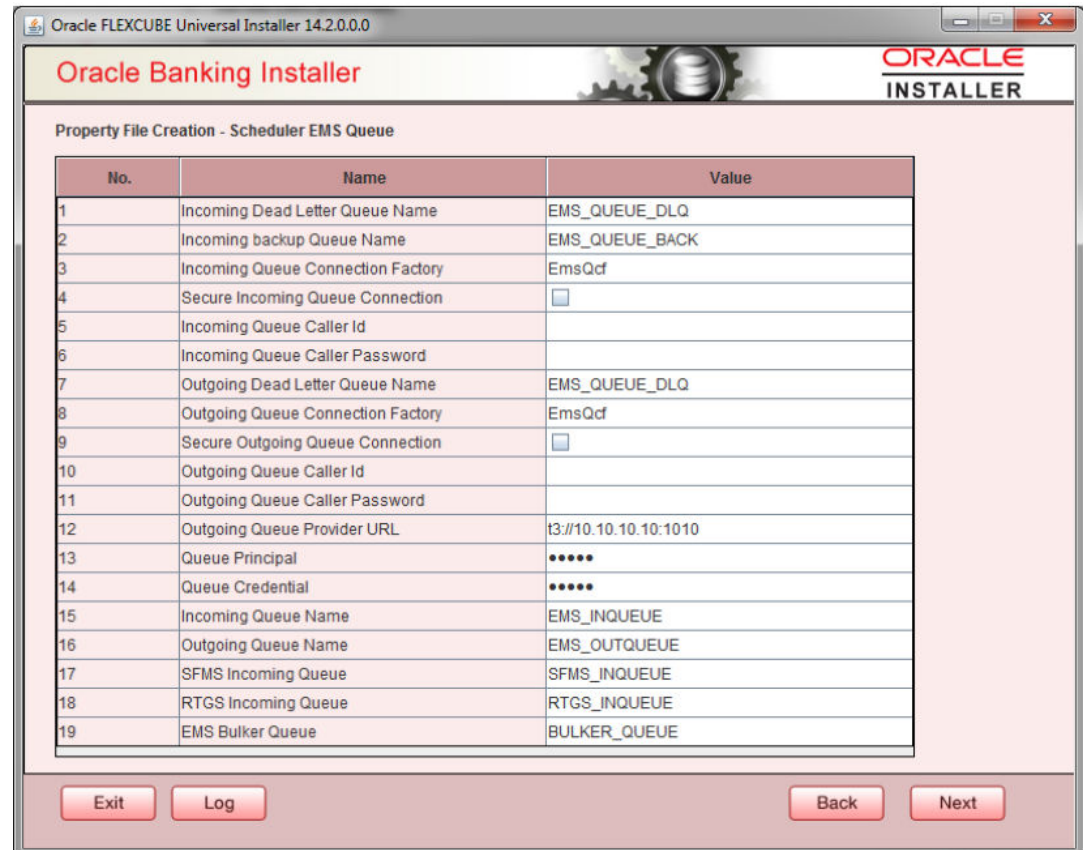
**Secure Outgoing Queue Connection** - Check this box to indicate that it is a secured outgoing queue connection.

**Outgoing Queue Caller ID** - Specify the caller ID for the secured queue connection.

**Outgoing Queue Caller Password** - Specify the caller Password for the secured queue connection.

**Outgoing Queue Provider URL** - Specify the URL of the outgoing queue.

**Figure 2-24 Configuring Scheduler**



**Queue Principal** - Specify the queue principal.

**Queue Credential** - Specify the queue credential.

**Incoming Queue Name** - Specify the incoming queue name.

**Outgoing Queue Name** - Specify the outgoing queue name.

**SFMS Incoming Queue** - Specify the SFMS Incoming Queue.

**RTGS Incoming Queue** - Specify the RTGS incoming Queue.

**EMS Bulker Queue** - Specify the Bulker Queue name as BULKER\_QUEUE. So that in fcubs.properties file, EMS\_BULKER\_QUEUE field gets updated to 'BULKER\_QUEUE' value.

Once you have specified the above details, click **Next** and system displays the next screen.

## Setting EMS Properties

You will be navigated to the 'Scheduler EMS Properties' screen. Here, you need to set the EMS details.



1. Set the EMS properties:

**Figure 2-25 EMS Properties**

No.	Name	Value
1	Incoming Dead Letter Queue Name	EMS_QUEUE_DLQ
2	Incoming backup Queue Name	EMS_QUEUE_BACK
3	Incoming Queue Connection Factory	EmsQcf
4	Secure Incoming Queue Connection	<input type="checkbox"/>
5	Incoming Queue Caller Id	
6	Incoming Queue Caller Password	
7	Outgoing Dead Letter Queue Name	EMS_QUEUE_DLQ
8	Outgoing Queue Connection Factory	EmsQcf
9	Secure Outgoing Queue Connection	<input type="checkbox"/>
10	Outgoing Queue Caller Id	
11	Outgoing Queue Caller Password	
12	Outgoing Queue Provider URL	t3://10.10.10.10:1010
13	Queue Principal	*****
14	Queue Credential	*****
15	Incoming Queue Name	EMS_INQUEUE
16	Outgoing Queue Name	EMS_OUTQUEUE
17	SFMS Incoming Queue	SFMS_INQUEUE
18	RTGS Incoming Queue	RTGS_INQUEUE
19	EMS Bulker Queue	BULKER_QUEUE

2. Specify the following details:

**OutGoing Connection Factory** - Specify the name of the outgoing connection factory to which EMS listens. You need to create this connection factory at the application server.

For details on connection factory creation, follow the steps described for creation of notify connection factories.

**Incoming Connection Factory** - Specify the name of the incoming connection factory to which EMS listens. You need to create this connection factory at the application server.

For details on connection factory creation, follow the steps described for creation of notify connection factories.

**Outgoing Queue Name** - Specify the name of the outgoing queue for which EMS is configured. By default, this is set as 'NOTIFY\_QUEUE\_DLQ'.

**Incoming Queue Name** - Specify the name of the incoming queue for which EMS is configured. By default, this is set as 'NOTIFY\_QUEUE\_DLQ'.

**Incoming Backup Queue Name** - Specify the name of the incoming backup queue for which EMS is configured.

**Outgoing Queue Provider URL** - In case EMS OUT MDB is to be configured to queue, you need to specify the URL for outgoing provider based on the application server. By default, the Installer displays the outgoing queue provider URL for Oracle WebLogic. This value is application server dependent.

The details of Outgoing Queue Provider URL to be used for different application servers are given below:

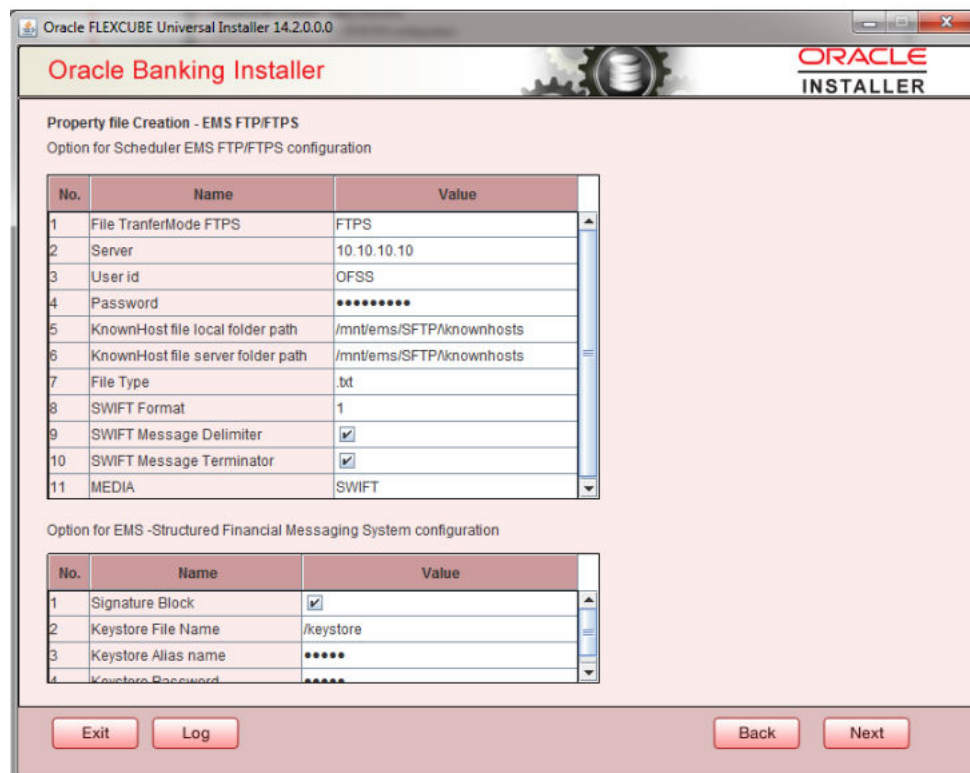
Application Server	EMS Out Initial Context Factory
Oracle WebLogic	t3://<ip_adress>:port E.g.: t3://10.10.10.10:1010 Here, 10.10.10.10 represents the local host and 1010 to the target server default port (AdminServer/ManagedServer).
IBM WebSphere	iiop://<ip_adress>:port E.g.: iiop://10.10.10.10:1010 Here, 1010 represents the default iiop port

**Queue Principal** - If EMS OUT MDB has to be configured to queue, you need to specify the EMS out queue principal. This is the user name for the application server in which the queue is configured.

**Queue Credential** - If EMS OUT MDB has to be configured to queue, you need to specify the EMS out queue credential. This is the password for the above user name created for application server in which the queue configured.

- Once you have specified the above details, click 'Next' and the following screen is displayed:

**Figure 2-26 EMS Properties**



- Specify the following details:

**File Transfer Mode FTPS**

Specify the mode of transferring files to EMS. Select one of the following:

- FTPS
- SFTP
- HTTP

**Server** - Specify the server IP address for the selected file transfer mode.

**User ID** - Specify the user ID to access the server of the file transfer mode.

**Password** - Specify the password to for the above user ID.

**File Type** - Specify the type of file that is transferred. By default, the Installer sets it as '.txt'.

**SWIFT Message Delimiter** - Specify the character, which is used as the message delimiter.

**SWIFT Message Terminator** - Specify the character, which is used as the message terminator.

Once you have specified the above details, click **Next**. and the following screen is displayed

**Figure 2-27 EMS Properties**

No.	Name	Value
1	File TransferMode	FTPS
2	Server	10.10.10.10
3	User id	OFSS
4	Password	*****
5	KnownHost file local folder path	/mnt/ems/SFTP/knownhosts
6	KnownHost file server folder path	/mnt/ems/SFTP/knownhosts
7	File Type	.bt
8	SWIFT Format	1
9	SWIFT Message Delimiter	<input checked="" type="checkbox"/>
10	SWIFT Message Terminator	<input checked="" type="checkbox"/>
11	MEDIA	SWIFT

No.	Name	Value
1	Signature Block	<input checked="" type="checkbox"/>
2	Keystore File Name	/keystore
3	Keystore Alias name	*****
4	Keystore Password	*****

5. Specify the following details:

**Keystore File Name** Specify the keystore file name.

**Keystore Alias Name** Specify the keystore alias name.

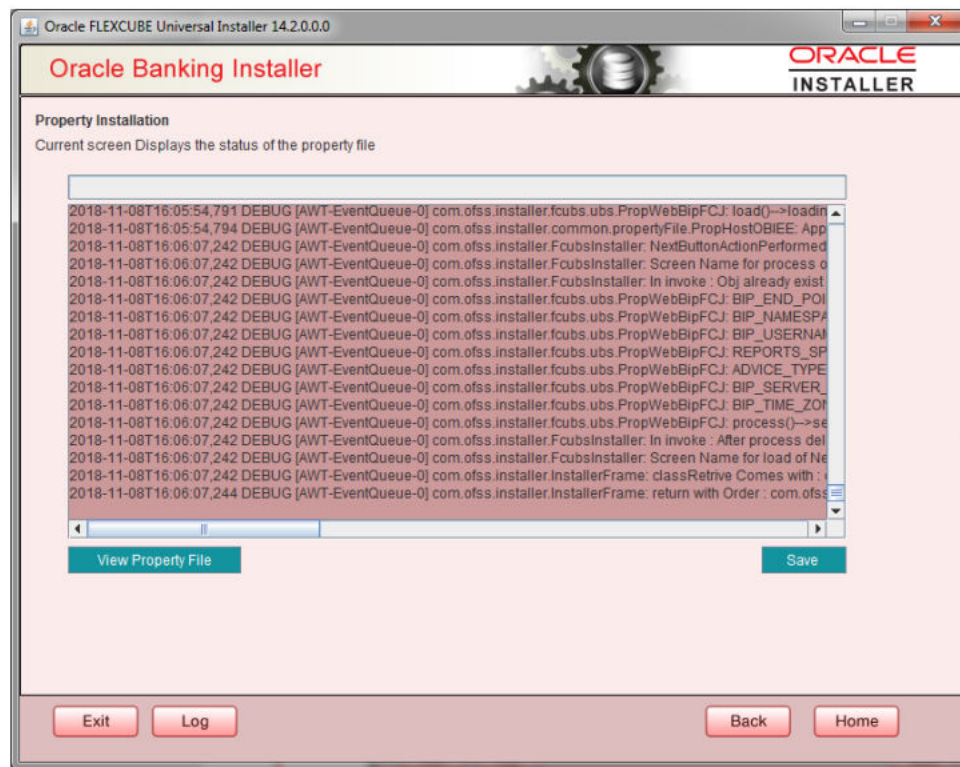
**Keystore Password** Specify the keystore password

## Saving Property File

After completing all the required settings explained above, you need to save the property file.

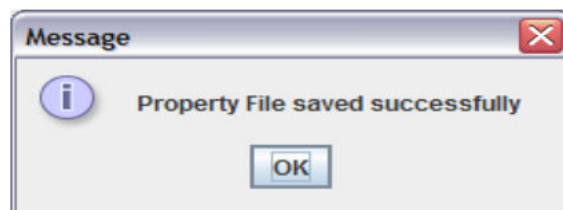
1. Save the Property File

**Figure 2-28 Saving Property File**



2. You can view the status of property file creation in the above screen. Once the file is saved, the installer displays the following message:

**Figure 2-29 Message**



3. If **Next** is clicked without 'Save' the property file will get saved in a temporary folder.

**Figure 2-30 Message**



This completes the properties file creation. Along with the property file creation, env.properties file is also generated in \INSTALLER\SOFT\logs path.