

Oracle® Banking Digital Experience

JMS Configuration Multi Entity Guide



Release 25.1.1.0.0

G43917-01

October 2025

ORACLE®

Copyright © 2015, 2025, Oracle and/or its affiliates.

This software and related documentation are provided under a license agreement containing restrictions on use and disclosure and are protected by intellectual property laws. Except as expressly permitted in your license agreement or allowed by law, you may not use, copy, reproduce, translate, broadcast, modify, license, transmit, distribute, exhibit, perform, publish, or display any part, in any form, or by any means. Reverse engineering, disassembly, or decompilation of this software, unless required by law for interoperability, is prohibited.

The information contained herein is subject to change without notice and is not warranted to be error-free. If you find any errors, please report them to us in writing.

If this is software, software documentation, data (as defined in the Federal Acquisition Regulation), or related documentation that is delivered to the U.S. Government or anyone licensing it on behalf of the U.S. Government, then the following notice is applicable:

U.S. GOVERNMENT END USERS: Oracle programs (including any operating system, integrated software, any programs embedded, installed, or activated on delivered hardware, and modifications of such programs) and Oracle computer documentation or other Oracle data delivered to or accessed by U.S. Government end users are "commercial computer software," "commercial computer software documentation," or "limited rights data" pursuant to the applicable Federal Acquisition Regulation and agency-specific supplemental regulations. As such, the use, reproduction, duplication, release, display, disclosure, modification, preparation of derivative works, and/or adaptation of i) Oracle programs (including any operating system, integrated software, any programs embedded, installed, or activated on delivered hardware, and modifications of such programs), ii) Oracle computer documentation and/or iii) other Oracle data, is subject to the rights and limitations specified in the license contained in the applicable contract. The terms governing the U.S. Government's use of Oracle cloud services are defined by the applicable contract for such services. No other rights are granted to the U.S. Government.

This software or hardware is developed for general use in a variety of information management applications. It is not developed or intended for use in any inherently dangerous applications, including applications that may create a risk of personal injury. If you use this software or hardware in dangerous applications, then you shall be responsible to take all appropriate fail-safe, backup, redundancy, and other measures to ensure its safe use. Oracle Corporation and its affiliates disclaim any liability for any damages caused by use of this software or hardware in dangerous applications.

Oracle®, Java, MySQL, and NetSuite are registered trademarks of Oracle and/or its affiliates. Other names may be trademarks of their respective owners.

Intel and Intel Inside are trademarks or registered trademarks of Intel Corporation. All SPARC trademarks are used under license and are trademarks or registered trademarks of SPARC International, Inc. AMD, Epyc, and the AMD logo are trademarks or registered trademarks of Advanced Micro Devices. UNIX is a registered trademark of The Open Group.

This software or hardware and documentation may provide access to or information about content, products, and services from third parties. Oracle Corporation and its affiliates are not responsible for and expressly disclaim all warranties of any kind with respect to third-party content, products, and services unless otherwise set forth in an applicable agreement between you and Oracle. Oracle Corporation and its affiliates will not be responsible for any loss, costs, or damages incurred due to your access to or use of third-party content, products, or services, except as set forth in an applicable agreement between you and Oracle.

Contents

Preface

Purpose	i
Before you Begin	i
Pre-requisites	i
Audience	i
Documentation Accessibility	ii
Critical Patches	ii
Diversity and Inclusion	ii
Related Resources	ii
Conventions	ii
Screenshot Disclaimer	iii
Acronyms and Abbreviations	iii
Post-requisites	iii

1 Objective and Scope

1.1 Background	1
1.2 Objective and Scope	1

2 JMS Step 1 - Create foreign server in a weblogic server

2.1 Introduction and Definitions	1
2.1.1 Create a JMS Module	1
2.1.2 Create a foreign Server	2
2.1.3 Configure additional properties for the new foreign server	2
2.1.4 Create foreign connection factories	3
2.1.5 Create foreign destinations	4

3 JMS Step 2 - How to Create a Simple JMS Queue in Weblogic Server

3.1 Introduction and Definitions	1
3.1.1 Create a JMS Server	3
3.1.2 Create a JMS Module	5
3.1.3 Create a SubDeployment	6

3.1.4	Create a Connection Factory	8
3.1.5	Create a JMS Queue	10

4 JMS Creation

4.1	Sample creation of Queue	1
4.2	Sample creation of Connection Factory	3
4.3	Sample Creation of Topic	6

5 JMS Configuration

5.1	Access Functionality	1
5.1.1	Regular Access Functionality	1
5.1.2	Account Access for a particular bucket	2
5.1.3	Account Access in Bulk	2
5.1.4	Subdeployment View	2
5.2	Audit Functionality	3
5.2.1	Audit Functionality	3
5.2.2	Subdeployment View	3
5.3	Authentication Functionality	4
5.3.1	Authentication Functionality	4
5.3.2	Subdeployment View	4
5.4	ExtSystemReceiver Functionality	4
5.4.1	ExtSystemReceiver Functionality	5
5.4.2	Subdeployment View	5
5.5	ExtSystemSender Functionality	6
5.5.1	ExtSystemSender Functionality	6
5.5.2	Subdeployment View	6
5.6	File Upload Functionality	6
5.6.1	Bulk CMS functionality	7
5.6.2	BULK CORPORATE LOAN PROCESSING AND APPROVAL	7
5.6.3	BULK Electronic Bill Payment Processing and Approval	7
5.6.4	BULK PAYMENT FUNCTIONALITY	8
5.6.5	BULK SCFCM FUNCTIONALITY	8
5.6.6	Subdeployment View	8
5.7	GCIF Functionality	9
5.7.1	Onboarding Draft updation functionality	10
5.7.2	Access point functionality	10
5.7.3	Report mapping functionality at GCIF level	11
5.7.4	GCIF onboarding draft functionality	11
5.7.5	GCIF party functionality	11
5.7.6	GCIF processing party	12

5.7.7	GCIF profile creation and updation functionality	12
5.7.8	GCIF report mapping functionality at user level	13
5.7.9	GCIF Rule functionality	13
5.7.10	GCIF USER ACCESS functionality	14
5.7.11	GCIF USERGROUP functionality	14
5.7.12	GCIF User create and update functionality	14
5.7.13	GCIF workflow create functionality	15
5.7.14	GCIF Onboarding Draft cancellation functionality	15
5.7.15	Subdeployment View	16
5.8	jpa-cache Functionality	16
5.8.1	jpa-cache Functionality	16
5.8.2	Subdeployment View	16
5.9	Multiple Transaction Approval Functionality	17
5.9.1	Multiple Transaction Approval Functionality	17
5.9.2	Subdeployment View	17
5.10	NotificationServer Functionality	18
5.10.1	NotificationServer Functionality	18
5.11	OBPMSYSTEMModule	19
5.11.1	OBPMSYSTEMModule	19
5.11.2	Subdeployment View	19
5.12	Payment Functionality	19
5.12.1	Payment Functionality	19
5.12.2	Subdeployment View	20
5.13	Policies Functionality	20
5.13.1	Policies Functionality	20
5.13.2	Subdeployment View	20
5.14	Reports Functionality	21
5.14.1	Reports Functionality	21
5.14.2	Subdeployment View	21
5.15	UBSSYSTEMModule functionality	21
5.15.1	UBSSYSTEMModule functionality	22
5.15.2	Subdeployment View	22
5.16	UserGroupUser Functionality	22
5.16.1	UserGroupUser Functionality	22
5.16.2	Subdeployment View	23
5.17	Party Movement Report Functionality	23
5.17.1	Party Movement Report Functionality	23
5.17.2	Subdeployment View	23

Index

Preface

- [Purpose](#)
- [Before you Begin](#)
- [Pre-requisites](#)
- [Audience](#)
- [Documentation Accessibility](#)
- [Critical Patches](#)
- [Diversity and Inclusion](#)
- [Related Resources](#)
- [Conventions](#)
- [Screenshot Disclaimer](#)
- [Acronyms and Abbreviations](#)
- [Post-requisites](#)

Purpose

This guide is designed to help acquaint you with the Oracle Banking application. This guide provides answers to specific features and procedures that the user need to be aware of the module to function successfully.

Before you Begin

Kindly refer to our **Getting Started User Guide** for common elements, including Symbols and Icons, Conventions Definitions, and so forth.

Pre-requisites

Specify **User ID** and **Password**, and login to **Home** screen.

Audience

This document is intended for the following audience:

- Customers
- Partners

Documentation Accessibility

For information about Oracle's commitment to accessibility, visit the Oracle Accessibility Program website at <http://www.oracle.com/pls/topic/lookup?ctx=acc&id=docacc>.

Access to Oracle Support

Oracle customer access to and use of Oracle support services will be pursuant to the terms and conditions specified in their Oracle order for the applicable services.

Critical Patches

Oracle advises customers to get all their security vulnerability information from the Oracle Critical Patch Update Advisory, which is available at [Critical Patches, Security Alerts and Bulletins](#). All critical patches should be applied in a timely manner to ensure effective security, as strongly recommended by [Oracle Software Security Assurance](#).

Diversity and Inclusion

Oracle is fully committed to diversity and inclusion. Oracle respects and values having a diverse workforce that increases thought leadership and innovation. As part of our initiative to build a more inclusive culture that positively impacts our employees, customers, and partners, we are working to remove insensitive terms from our products and documentation. We are also mindful of the necessity to maintain compatibility with our customers' existing technologies and the need to ensure continuity of service as Oracle's offerings and industry standards evolve. Because of these technical constraints, our effort to remove insensitive terms is ongoing and will take time and external cooperation.

Related Resources

For more information on any related features, refer to the following documents:

- Oracle Banking Digital Experience Installation Manuals
- Oracle Banking Digital Experience Licensing Manuals

Conventions

The following text conventions are used in this document:

Convention	Meaning
boldface	Boldface type indicates graphical user interface elements associated with an action, or terms defined in text or the glossary.
<i>italic</i>	Italic type indicates book titles, emphasis, or placeholder variables for which you supply particular values.

Convention	Meaning
monospace	Monospace type indicates commands within a paragraph, URLs, code in examples, text that appears on the screen, or text that you enter.

Screenshot Disclaimer

Personal information used in the interface or documents is dummy and does not exist in the real world. It is only for reference purposes; actual screens that appear in the application may vary based on selected browser, theme, and mobile devices.

Acronyms and Abbreviations

The list of the acronyms and abbreviations used in this guide are as follows:

Table 1 Acronyms and Abbreviations

Abbreviation	Description
OBDX	Oracle Banking Digital Experience

Post-requisites

After finishing all the requirements, please log out from the **Home** screen.

1

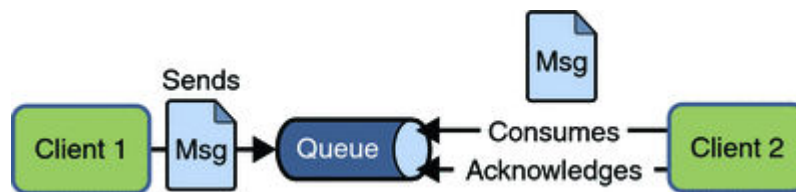
Objective and Scope

- [Background](#)
This topic provides information on **Background**.
- [Objective and Scope](#)
This topic provides information on **Objective and Scope**.

1.1 Background

This topic provides information on **Background**.

JMS (Java Message Service) is an API that provides the facility to create, send and read messages. It provides loosely coupled, reliable communication. Messaging enables distributed communication that is loosely coupled. A component sends a message to a destination, and the recipient can retrieve the message from the destination. However, the sender and the receiver do not have to be available at the same time in order to communicate. In fact, the sender does not need to know anything about the receiver; nor does the receiver need to know anything about the sender. The sender and the receiver need to know only which message format and which destination to use. JMS configuration is required to send message (request) to external system and receive processed message (response) from external system.



1.2 Objective and Scope

This topic provides information on **Objective and Scope**.

Define a common set of messaging concepts and facilities. The scope of this document is to provide steps to configure foreign server for connecting external system using JNDI provider and configure JMS queue to receive data from external system. Foreign server is used to send message to external system with help of JNDI Initial, JNDI connection url, JNDI connection factory and JNDI destination. To configure JMS receiver queue in web logic we have to create JMS server and JMS module. Where JMS module include creation of JMS connection factory, JMS queue and SubDeployment.

2

JMS Step 1 - Create foreign server in a weblogic server

- [Introduction and Definitions](#)

2.1 Introduction and Definitions

A Foreign Server represents a JNDI provider that is outside WebLogic server. It contains information that allows a local WebLogic Server instance to reach a remote JNDI provider, thereby allowing for a number of foreign connection factory and destination objects to be defined on one JNDI directory.

- [Create a JMS Module](#)
This topic describes the systematic instruction to **Create a JMS Module** option.
- [Create a foreign Server](#)
This topic describes the systematic instruction to **Create a foreign Server** option.
- [Configure additional properties for the new foreign server](#)
This topic describes the systematic instruction to **Configure additional properties for the new foreign server** option.
- [Create foreign connection factories](#)
This topic describes the systematic instruction to **Create foreign connection factories** option.
- [Create foreign destinations](#)
This topic describes the systematic instruction to **Create foreign destinations** option.

2.1.1 Create a JMS Module

This topic describes the systematic instruction to **Create a JMS Module** option.

- Services → Messaging → JMS Modules
- Select **New**
- Name: HostSystemModule
- Leave the other options empty
- Targets: obdx_server
- Press **Next**
- Leave “Would you like to add resources to this JMS system module” unchecked and press **Finish**.

JMS Modules

New Delete Showing 1 to 7 of 7 Previous | Next

Name	Type	Scope	Domain Partitions
AsyncFailureLogJMS	JMSSystemResource	Global	
AuditJMS	JMSSystemResource	Global	
EndPointJMSModule	JMSSystemResource	Global	
extXfaceJMSModule	JMSSystemResource	Global	
FileUploadJMS	JMSSystemResource	Global	
HostSystemModule	JMSSystemResource	Global	
UBSSystemModule	JMSSystemResource	Global	

New Delete Showing 1 to 7 of 7 Previous | Next

2.1.2 Create a foreign Server

This topic describes the systematic instruction to **Create a foreign Server** option.

- Services → Messaging → JMS Modules
- Select HostSystemModule and press **New**
- Select Foreign Server and **Next**
- Name: ForeignServer (Once you create a foreign server, you cannot rename it. Instead, you must delete it and create another one that uses the new name) and Click **Next** to proceed to the targeting page or click **Finish** to create the foreign server.

Summary of Resources

New Delete Showing 1 to 1 of 1 Previous | Next

Name	Type	JNDI Name	Subdeployment	Targets
ForeignServer	Foreign Server	N/A	Default Targeting	obdx_server

New Delete Showing 1 to 1 of 1 Previous | Next

2.1.3 Configure additional properties for the new foreign server

This topic describes the systematic instruction to **Configure additional properties for the new foreign server** option.

- Services → Messaging → JMS Modules
- Select HostSystemModule
- Click on ForeignServer
- On the Configuration → General tab
- Enter Following details.
 - JNDI Initial: enter the name of the class that must be instantiated to access the JNDI provider. For example (weblogic.jndi.WLInitialContextFactory)
 - JNDI Connection URL: enter the URL that WebLogic Server uses to contact the JNDI provider. (http://IP:port)
- Click **Save**.

Configuration Subdeployment Notes

General Destinations Connection Factories

Save

A foreign server represents a JNDI provider that resides outside a WebLogic Server. It contains information that allows WebLogic Server to reach the remote JNDI provider. This way, a number of connection factory and destination objects (queues or topics) can be defined on one JNDI directory. Use this page to configure a foreign server.

Name: ForeignServer The name of this foreign server. [More Info...](#)

JNDI Initial Context Factory: weblogic.jndi.WLInitialCont The name of the class that must be instantiated to access the JNDI provider. This class name depends on the JNDI provider and the vendor that are being used. [More Info...](#)

JNDI Connection URL: http://mum00aoz.in.oracle.com:6003 The URL that WebLogic Server will use to contact the JNDI provider. The syntax of this URL depends on which JNDI provider is being used. For WebLogic JMS, leave this field blank if you are referencing WebLogic JMS objects within the same cluster. [More Info...](#)

JNDI Properties Credential: Any Credentials that must be set for the JNDI provider. These Credentials will be part of the properties will be passed directly to the constructor for the JNDI provider's InitialContext class. Note: For secure credential management, use the Credential field. Using the Properties field results in the credential being stored and displayed as originally entered. [More](#)

2.1.4 Create foreign connection factories

This topic describes the systematic instruction to **Create foreign connection factories** option.

- Services → Messaging → JMS Modules
- Select HostSystemModule
- Click on ForeignServer
- On the Configuration → **Connection** Factories tab press **New**
- Enter Following details
 - Name: enter a name for the foreign connection factory.
 - Local JNDI Name: specify the name that the remote object will be bound to in the local server's JNDI tree and is used to look up the object on the local server.
 - Remote JNDI Name: specify the name of the remote object that will be looked up in the remote JNDI directory.
- Click **OK**.

Settings for ForeignConnectionFactory

Configuration Notes

Save

A foreign connection factory is a connection factory that resides on another server instance and is accessible via JNDI. A remote connection factory can be used to refer to another instance of WebLogic Server running in a different cluster or server, or a foreign provider, as long as that provider supports JNDI.

Use this page to create a foreign connection factory.

Name: ForeignConnectionFactory The name of this foreign connection factory. [More Info...](#)

Local JNDI Name: HostQCF The name that the remote object will be bound to in the local server's JNDI tree. This is the name that should be used to look up the object on the local server. [More Info...](#)

Remote JNDI Name: HostQCF The name of the remote object that will be looked up in the remote JNDI directory. [More Info...](#)

Settings for ForeignServer

Configuration Subdeployment Notes

General Destinations **Connection Factories**

A foreign connection factory represents a connection factory that resides on another server, and which is accessible via JNDI. A remote connection factory can be used to refer to another instance of WebLogic Server running in a different cluster or server, or a foreign provider, as long as that provider supports JNDI.

This page summarizes the foreign connection factories that have been created for this domain.

[Customize this table](#)

Foreign Connection Factories (Filtered - More Columns Exist)

Name	Local JNDI Name	Remote JNDI Name
ForeignConnectionFactory	HostQCF	HostQCF

Showing 1 to 1 of 1 Previous | Next

2.1.5 Create foreign destinations

This topic describes the systematic instruction to **Create foreign destinations** option.

- Services → Messaging → JMS Modules
- Select HostSystemModule
- Click on ForeignServer
- On the Configuration → Destination tab press **New**
- Enter Following details
 - Name: enter a name for the foreign destination.
 - Local JNDI Name: specify the name that the remote object will be bound to in the local server's JNDI tree and is used to look up the object on the local server.
 - Remote JNDI Name: specify the name of the remote object that will be looked up in the remote JNDI directory.
- Click **Ok**.

Settings for ForeignDestination

Configuration Notes

Save

A foreign destination (topic or queue) is a destination on a remote server. When this destination is looked up on the local server, a look-up will be performed automatically on the remote JNDI directory, and the object will be returned from that directory.

Use this page to configure a foreign destination.

Name: ForeignDestination The name of this foreign destination. [More Info...](#)

Local JNDI Name: HostProcess The name that the remote object will be bound to in the local server's JNDI tree. This is the name that should be used to look up the object on the local server. [More Info...](#)

Remote JNDI Name: HostProcess The name of the remote object that will be looked up in the remote JNDI directory. [More Info...](#)

ConfigurationSubdeploymentNotes

GeneralDestinationsConnection Factories

A foreign destination (topic or queue) can be found on a remote server. When this destination is looked up on the local server, a look-up will be performed automatically on the remote JNDI directory, and the object will be returned from that directory.

This page summarizes the foreign destinations that have been created for this domain.

[Customize this table](#)

Foreign Destinations

NewDelete

Showing 1 to 1 of 1Previous | Next

<input type="checkbox"/> Name	Local JNDI Name	Remote JNDI Name
<input type="checkbox"/> ForeignDestination	HostProcess	HostProcess

NewDelete

Showing 1 to 1 of 1Previous | Next

3

JMS Step 2 - How to Create a Simple JMS Queue in Weblogic Server

- [Introduction and Definitions](#)

A JMS queue in Weblogic Server is associated with a number of additional resources:

3.1 Introduction and Definitions

A JMS queue in Weblogic Server is associated with a number of additional resources:

JMS Server

A JMS server acts as a management container for resources within JMS modules. Some of its responsibilities include the maintenance of persistence and state of messages and subscribers. A JMS server is required in order to create a JMS module.

JMS Module

A JMS module is a definition which contains JMS resources such as queues and topics. A JMS module is required in order to create a JMS queue.

Subdeployment

JMS modules are targeted to one or more WLS instances or a cluster. Resources within a JMS module, such as queues and topics are also targeted to a JMS server or WLS server instances. A subdeployment is a grouping of targets. It is also known as advanced targeting.

Connection Factory

A connection factory is a resource that enables JMS clients to create connections to JMS destinations.

JMS Queue

A JMS queue (as opposed to a JMS topic) is a point-to-point destination type. A message is written to a specific queue or received from a specific queue.

The objects used in this example are:

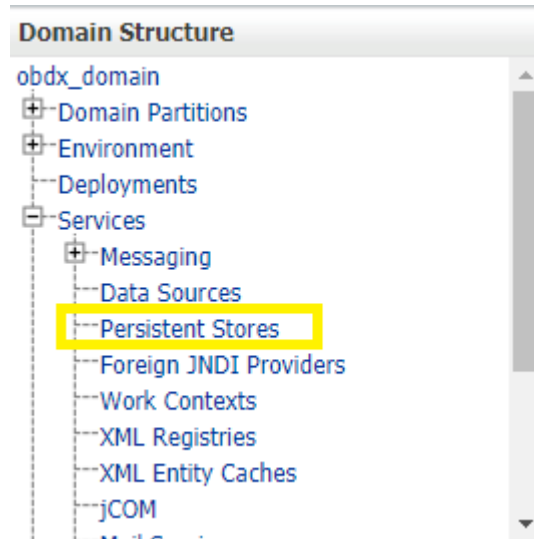
Table 3-1

Object Name	Type
ExtXfaceJMSServer	JMS Server
extXfaceJMSModule	JMS Module
extXfaceSubdeployment	Subdeployment
ReceiverQCF	Connection Factory
ReceiverQueue	JMS Queue

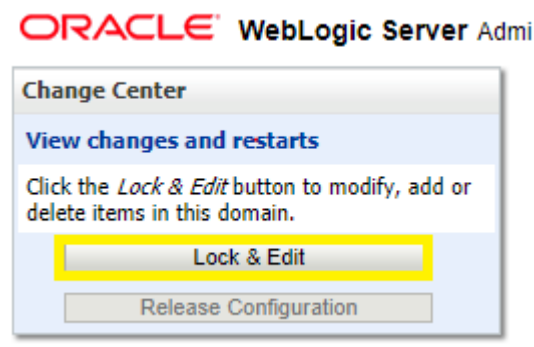
1. Configuration Steps-The following steps are done in the WebLogic Server Console, beginning with the left-hand navigation menu.

Create Persistent store-

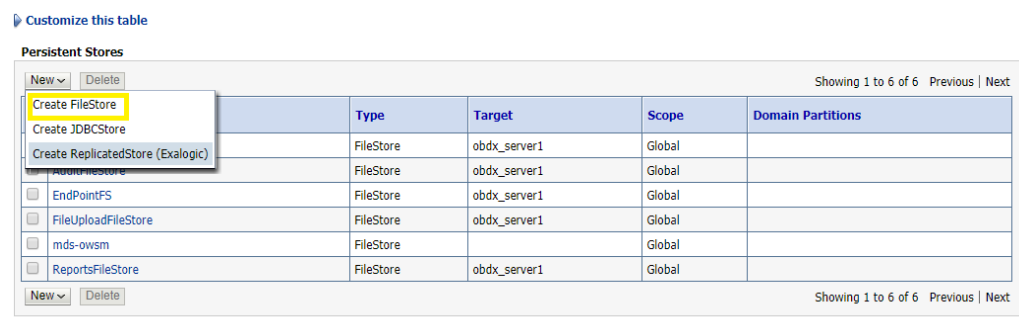
- Here you have to Create a new persistent store (Once the persistent store is created that can be used for both sender and receiver server. Hence there is no need to create a different persistent store for two different servers.) Hence Before creating a JMS server you need to create the Persistent store if its not already created. Follow the steps shown below for creating a persistent store.
- Select **Services** → **Persistent Stores**.



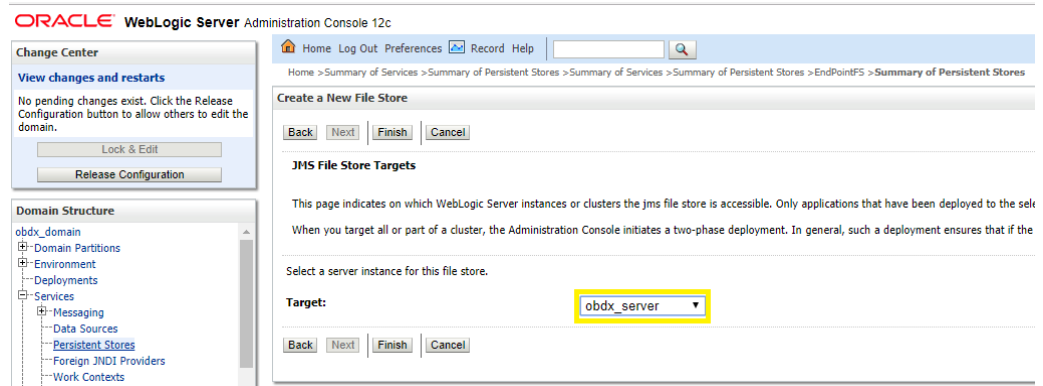
First Select Lock & Edit as shown-



- Select new and the select create FileStore from the list as shown below-



- Give the name of the filestore. Example- **EndPointFS** and the Directory location, example **/scratch/obdx/wls**. **Directory location field is optional and the path given above is just an example , it may vary according to the server.**
- Click **Next**.
- Select the target server as shown in following snapshot-



- Click **Finish**.
- [Create a JMS Server](#)
This topic describes the systematic instruction to **Create a JMS Server** option.
- [Create a JMS Module](#)
This topic describes the systematic instruction to **Create a JMS Module** option.
- [Create a SubDeployment](#)
This topic describes the systematic instruction to **Create a SubDeployment** option.
- [Create a Connection Factory](#)
This topic describes the systematic instruction to **Create a Connection Factory** option.
- [Create a JMS Queue](#)
This topic describes the systematic instruction to **Create a JMS Queue** option.

3.1.1 Create a JMS Server

This topic describes the systematic instruction to **Create a JMS Server** option.

- Services → Messaging → JMS Servers



- Select **New**.

JMS Servers (Filtered - More Columns Exist)

New Delete Showing 1 to 6 of 6 Previous | Next

<input type="checkbox"/>	Name ↕	Persistent Store	Target	Current Target	Health	Scope	Domain Partitions
<input type="checkbox"/>	AsyncFailureLogJMServer	AsyncFailureLogFileStore	obdx_server1	obdx_server1		Global	
<input type="checkbox"/>	AuditJMServer	AuditFileStore	obdx_server1	obdx_server1		Global	
<input type="checkbox"/>	ExtxfaceReceiverServer	EndPointFS	obdx_server1	obdx_server1		Global	
<input type="checkbox"/>	ExtxfaceSenderServer	EndPointFS	obdx_server1	obdx_server1		Global	
<input type="checkbox"/>	FileUploadJMServer	FileUploadFileStore	obdx_server1	obdx_server1		Global	
<input type="checkbox"/>	ReportsJMServer	ReportsFileStore	obdx_server1	obdx_server1		Global	

New Delete Showing 1 to 6 of 6 Previous | Next

- Name: Give name as for example- **ExtxfaceReceiverServer**.
- After naming the server Click **Next** as shown in following example screenshot.

Create a New JMS Server

Back Next Finish Cancel

JMS Server Properties

The following properties will be used to identify your new JMS Server.

* Indicates required fields

What would you like to name your new JMS server?

* Name:

Would you like this new JMS server to be restricted to a specific resource group template or resource group ?

Scope:

Back Next Finish Cancel

- **Persistent Store**: Select the name Persistent store from the dropdown list which was created in the previous step. Example-**EndPointFS**.
- Click **Next**.

Create a New JMS Server

Back Next Finish Cancel

Select Persistent Store

Specify a persistent store for the new JMS server.

Persistent Store: EndPointFS Create a New Store

Back Next Finish Cancel

- **Target:** Target should Point to the **Weblogic server cluster** as in this case target is set to **obdx_server1** cluster. (Or any other available cluster).
- Click **Finish**.

Create a New JMS Server

Back Next Finish Cancel

Select targets

Select the server instance or migratable target on which you would like to deploy this JMS server.

Target: obdx_server1

Back Next Finish Cancel

The JMS server should now be visible in the list.

Customize this table

JMS Servers (Filtered - More Columns Exist)

Click the **Lock & Edit** button in the Change Center to activate all the buttons on this page.

Name	Persistent Store	Target	Current Target	Health	Scope	Domain Partitions
AsyncFailureLogJMServer	AsyncFailureLogFileStore	obdx_server1	obdx_server1		Global	
AuditJMServer	AuditFileStore	obdx_server1	obdx_server1		Global	
ExtfaceReceiverServer	EndPointFS	obdx_server1	obdx_server1		Global	
ExtfaceSenderServer	EndPointFS	obdx_server1	obdx_server1		Global	
FileUploadJMServer	FileUploadFileStore	obdx_server1	obdx_server1		Global	
ReportsJMServer	ReportsFileStore	obdx_server1	obdx_server1		Global	

3.1.2 Create a JMS Module

This topic describes the systematic instruction to **Create a JMS Module** option.

- Services → Messaging → JMS Modules
- Select **New**

- Name: HostSystemModule
- Leave the other options empty
- Targets: obdx_server
- Press **Next**
- Leave “Would you like to add resources to this JMS system module” unchecked and press **Finish**.

JMS Modules

New Delete Showing 1 to 7 of 7 Previous | Next

<input type="checkbox"/>	Name ↕	Type	Scope	Domain Partitions
<input type="checkbox"/>	AsyncFailureLogJMS	JMSSystemResource	Global	
<input type="checkbox"/>	AuditJMS	JMSSystemResource	Global	
<input type="checkbox"/>	EndPointJMSModule	JMSSystemResource	Global	
<input type="checkbox"/>	extXfaceJMSModule	JMSSystemResource	Global	
<input type="checkbox"/>	FileUploadJMS	JMSSystemResource	Global	
<input type="checkbox"/>	HostSystemModule	JMSSystemResource	Global	
<input type="checkbox"/>	UBSSystemModule	JMSSystemResource	Global	

New Delete Showing 1 to 7 of 7 Previous | Next

3.1.3 Create a SubDeployment

This topic describes the systematic instruction to **Create a SubDeployment** option.

A subdeployment is not necessary for the JMS queue to work, but it allows you to easily target subcomponents of the JMS module to a single target or group of targets. We will use the subdeployment in this example to target the following connection factory and JMS queue to the JMS server we created earlier.

- Services → Messaging → JMS Modules.
- Select **ExtxfaceReceiverModule**.

[Customize this table](#)

JMS Modules

New Delete Showing 1 to 9 of 9 Previous | Next

<input type="checkbox"/>	Name ↕	Type	Scope	Domain Partitions
<input type="checkbox"/>	AsyncFailureLogJMS	JMSSystemResource	Global	
<input type="checkbox"/>	AuditJMS	JMSSystemResource	Global	
<input type="checkbox"/>	ExtxfaceReceiverModule	JMSSystemResource	Global	
<input type="checkbox"/>	ExtxfaceReceiverModule2	JMSSystemResource	Global	
<input type="checkbox"/>	ExtxfaceSenderModule	JMSSystemResource	Global	
<input type="checkbox"/>	ExtxfaceSenderModule2	JMSSystemResource	Global	
<input type="checkbox"/>	FileUploadJMS	JMSSystemResource	Global	
<input type="checkbox"/>	ReportsJMSModule	JMSSystemResource	Global	
<input type="checkbox"/>	UBSSystemModule	JMSSystemResource	Global	

New Delete Showing 1 to 9 of 9 Previous | Next

- Select the **Subdeployments** tab and click **New**.

Settings for ExtxfaceReceiverModule

Configuration **Subdeployments** Targets Security Notes

This page displays subdeployments created for a JMS system module. A subdeployment is a mechanism by which JMS module resources (such as queues, topics, and connection factories) are grouped and targeted to a server resource (such as JMS servers, server instances, or cluster).

[Customize this table](#)

Subdeployments

New Delete Showing 1 to 1 of 1 Previous | Next

<input type="checkbox"/>	Name ↕	Resources	Targets
<input type="checkbox"/>	ExtxfaceReceiverSubDep	ExtxfaceReceiverQueue	ExtxfaceReceiverServer

New Delete Showing 1 to 1 of 1 Previous | Next

- Subdeployment Name: give subdeployment name. example- **ExtxfaceReceiverSubDep**.
- Press **Next**.

Create a New Subdeployment

Back Next Finish Cancel

Subdeployment Properties

The following properties will be used to identify your new subdeployment.

* Indicates required fields

* Subdeployment Name: ExtxfaceReceiverSubDep

Back Next Finish Cancel

- Here you can select the target(s) for the subdeployment. You can choose either Servers (i.e. WebLogic managed servers, such as the **obdx_server**) or JMS Servers such as the JMS Server created earlier. As the purpose of our subdeployment in this example is to target a specific JMS server, we will choose the JMS Server option.
- Press **Finish**.

Targets

Please select targets for the Subdeployment

Clusters
<input type="checkbox"/> obdx_cluster <ul style="list-style-type: none"> <input type="radio"/> All servers in the cluster <input type="radio"/> Part of the cluster <ul style="list-style-type: none"> <input type="checkbox"/> obdx_server1

JMS Servers
<input type="checkbox"/> AsyncFailureLogJMSServer
<input type="checkbox"/> AuditJMSServer
<input checked="" type="checkbox"/> ExtxfaceReceiverServer
<input type="checkbox"/> ExtxfaceSenderServer
<input type="checkbox"/> FileUploadJMSServer
<input type="checkbox"/> ReportsJMSServer

3.1.4 Create a Connection Factory

This topic describes the systematic instruction to **Create a Connection Factory** option.

- Services → Messaging → JMS Modules
- Select **ExtxfaceReceiverModule** and press **New**.

Customize this table

JMS Modules

Showing 1 to 9 of 9 Previous | Next

<input type="checkbox"/> Name	Type	Scope	Domain Partitions
<input type="checkbox"/> AsyncFailureLogJMS	JMSSystemResource	Global	
<input type="checkbox"/> AuditJMS	JMSSystemResource	Global	
<input type="checkbox"/> ExtxfaceReceiverModule	JMSSystemResource	Global	
<input type="checkbox"/> ExtxfaceReceiverModule2	JMSSystemResource	Global	
<input type="checkbox"/> ExtxfaceSenderModule	JMSSystemResource	Global	
<input type="checkbox"/> ExtxfaceSenderModule2	JMSSystemResource	Global	
<input type="checkbox"/> FileUploadJMS	JMSSystemResource	Global	
<input type="checkbox"/> ReportsJMSModule	JMSSystemResource	Global	
<input type="checkbox"/> UBSSystemModule	JMSSystemResource	Global	

Showing 1 to 9 of 9 Previous | Next

[Customize this table](#)

Summary of Resources

[New](#) [Delete](#)

Showing 1 to 2 of 2 [Previous](#) | [Next](#)

<input type="checkbox"/>	Name	Type	JNDI Name	Subdeployment	Targets
<input type="checkbox"/>	ExtfaceReceiverQCF	Connection Factory	ExtSystemReceiverQCF	Default Targeting	obdx_server1
<input type="checkbox"/>	ExtfaceReceiverQueue	Queue	ExtSystemReceiverQueue	ExtfaceReceiverSubDep	ExtfaceReceiverServer

[New](#) [Delete](#)

Showing 1 to 2 of 2 [Previous](#) | [Next](#)

- Select **Connection Factory** and click **Next**.

Create a New JMS System Module Resource

[Back](#) [Next](#) [Finish](#) [Cancel](#)

Choose the type of resource you want to create.

Use these pages to create resources in a JMS system module, such as queues, topics, templates, and connection factories.

Depending on the type of resource you select, you are prompted to enter basic information for creating the resource. For targetable resources, like stand-alone queues and topics, connection factories, distributed queues and topics, foreign servers, and JMS SAF destinations, you can also proceed to targeting pages for selecting appropriate server targets. You can also associate targetable resources with subdeployments, which is an advanced mechanism for grouping JMS module resources and the members to server resources.

☒ Connection Factory

Defines a set of connection configuration parameters that are used to create connections for JMS clients. [More Info...](#)

☐ Queue

Defines a point-to-point destination type, which are used for asynchronous peer communications. A message delivered to a queue is distributed to only one consumer. [More Info...](#)

☐ Topic

Defines a publish/subscribe destination type, which are used for asynchronous peer communications. A message delivered to a topic is distributed to all topic consumers. [More Info...](#)

- Name: Give name of the connection factory example- **ExtfaceReceiverQCF**.
JNDI Name: **ExtSystemReceiverQCF**.
- Click **Next**.

Create a New JMS System Module Resource

[Back](#) [Next](#) [Finish](#) [Cancel](#)

Connection Factory Properties

The following properties will be used to identify your new connection factory. The current module is ExtfaceReceiverModule.

* Indicates required fields

What would you like to name your new connection factory?

* Name:

What JNDI Name would you like to use to look up your new connection factory?

JNDI Name:

The Connection Factory Subscription Sharing Policy Subscribers can be used to control which subscribers can access new subscriptions. Should subscriptions created using this factory be sharable?

Subscription Sharing Policy:

The Client ID Policy indicates whether more than one JMS connection can use the same Client ID. Oracle recommends setting the Client ID policy to Unrestricted if sharing durable subscribers. Subscriptions created with different Client ID policies are always treated as independent subscriptions. What Client ID Policy would you like to use?

Client ID Policy:

A connection factory can limit the number of messages that can be queued for an asynchronous session. Should this connection factory impose a limit?

Maximum Messages per Session:

- Select Default Targeting Enabled and Press **Finish**
- The connection factory should be listed on the following page with **Default Targeting** as Subdeployment and WebLogic cluster as the target.

3.1.5 Create a JMS Queue

This topic describes the systematic instruction to **Create a JMS Queue** option.

- Services → Messaging → JMS Modules
- Select **ExtxfaceReceiverModule** and Click **New**.

Customize this table

JMS Modules

New Delete Showing 1 to 9 of 9 Previous | Next

<input type="checkbox"/>	Name ↕	Type	Scope	Domain Partitions
<input type="checkbox"/>	AsyncFailureLogJMS	JMSSystemResource	Global	
<input type="checkbox"/>	AuditJMS	JMSSystemResource	Global	
<input type="checkbox"/>	ExtxfaceReceiverModule	JMSSystemResource	Global	
<input type="checkbox"/>	ExtxfaceReceiverModule2	JMSSystemResource	Global	
<input type="checkbox"/>	ExtxfaceSenderModule	JMSSystemResource	Global	
<input type="checkbox"/>	ExtxfaceSenderModule2	JMSSystemResource	Global	
<input type="checkbox"/>	FileUploadJMS	JMSSystemResource	Global	
<input type="checkbox"/>	ReportsJMSModule	JMSSystemResource	Global	
<input type="checkbox"/>	UBSSystemModule	JMSSystemResource	Global	

New Delete Showing 1 to 9 of 9 Previous | Next

Customize this table

Summary of Resources

New Delete Showing 1 to 2 of 2 Previous | Next

<input type="checkbox"/>	Name ↕	Type	JNDI Name	Subdeployment	Targets
<input type="checkbox"/>	ExtxfaceReceiverQCF	Connection Factory	ExtSystemReceiverQCF	Default Targeting	obdx_server1
<input type="checkbox"/>	ExtxfaceReceiverQueue	Queue	ExtSystemReceiverQueue	ExtxfaceReceiverSubDep	ExtxfaceReceiverServer

New Delete Showing 1 to 2 of 2 Previous | Next

- Select **Queue** and Click **Next**.

Back **Next** Finish Cancel

Choose the type of resource you want to create.

Use these pages to create resources in a JMS system module, such as queues, topics, templates, and connection factories.

Depending on the type of resource you select, you are prompted to enter basic information for creating the resource. For targetable resources, like stand-alone queues and topics, connection factories, distributed queues and topics, foreign servers, and JMS SAF destinations, you can also proceed to targeting pages for selecting appropriate server targets. You can also associate targetable resources with subdeployments, which is an advanced mechanism for grouping JMS module resources and the members to server resources.

<input type="radio"/> Connection Factory	Defines a set of connection configuration parameters that are used to create connections for JMS clients. More Info...
<input checked="" type="radio"/> Queue	Defines a point-to-point destination type, which are used for asynchronous peer communications. A message delivered to a queue is distributed to only one consumer. More Info...
<input type="radio"/> Topic	Defines a publish/subscribe destination type, which are used for asynchronous peer communications. A message delivered to a topic is distributed to all topic consumers. More Info...
<input type="radio"/> Distributed Queue	Defines a set of queues that are distributed on multiple JMS servers, but which are accessible as a single, logical queue to JMS clients. More Info...

- **Name:** Provide name of the message queue. example- **ExtxfaceReceiverQueue**.
JNDI Name: Provide JNDI name. example- **ExtSystemReceiverQueue**.
Template: **None**.
- Press **Next**.

Create a New JMS System Module Resource

Back Next Finish Cancel

JMS Destination Properties

The following properties will be used to identify your new Queue. The current module is ExtxfaceReceiverModule.

* Indicates required fields

* Name: ExtxfaceReceiverQueue

JNDI Name: ExtSystemReceiverQueue

Template: None ▾

Back Next Finish Cancel

- **Subdeployments:** Give the name of the sub-deployment name in which Queue is supposed to be added. **Example-** ExtxfaceReceiverSubDep.
- Select the Target as **ExtxfaceReceiverServer**.
Click **Finish**.

Back Next Finish Cancel

The following properties will be used to target your new JMS system module resource

Use this page to select a subdeployment to assign this system module resource. A subdeployment is a mechanism by which JMS resources are grouped and targeted to a server instance, cluster, or SAF agent. If necessary, you can create a new subdeployment by clicking the **Create a New Subdeployment** button. You can also reconfigure subdeployment targets later by using the parent module's subdeployment management page.

Select the subdeployment you want to use. If you select (none), no targeting will occur.

Subdeployments: ExtxfaceReceiverSubDep ▾ Create a New Subdeployment

What targets do you want to assign to this subdeployment?

Targets :

JMS Servers
<input type="radio"/> AsyncFailureLogJMSServer
<input type="radio"/> AuditJMSServer
<input checked="" type="radio"/> ExtxfaceReceiverServer
<input type="radio"/> ExtxfaceSenderServer
<input type="radio"/> FileUploadJMSServer
<input type="radio"/> ReportsJMSServer

The **ReceiverQueues** should be listed on the following page with Sub-deployment as **ExtxfaceReceiverSubDep** and target as **ExtxfaceReceiverServer**.

[Customize this table](#)

Summary of Resources

Showing 1 to 2 of 2 Previous Next				
<input type="checkbox"/> Name	Type	JNDI Name	Subdeployment	Targets
<input type="checkbox"/> ExtfaceReceiverQCF	Connection Factory	ExtSystemReceiverQCF	Default Targeting	obdx_server1
<input type="checkbox"/> ExtfaceReceiverQueue	Queue	ExtSystemReceiverQueue	ExtfaceReceiverSubDep	ExtfaceReceiverServer
Showing 1 to 2 of 2 Previous Next				

Confirm the resources for the **ExtfaceReceiverModule**. Using the Domain Structure tree, navigate to Services → Messaging → JMS Modules then select **ExtfaceReceiverModule**.

[Customize this table](#)

JMS Modules

<div>NewDelete</div>		Showing 1 to 9 of 9Previous Next		
<input type="checkbox"/>	Name🔗	Type	Scope	Domain Partitions
<input type="checkbox"/>	AsyncFailureLogJMS	JMSSystemResource	Global	
<input type="checkbox"/>	AuditJMS	JMSSystemResource	Global	
<input type="checkbox"/>	ExtfaceReceiverModule	JMSSystemResource	Global	
<input type="checkbox"/>	ExtfaceReceiverModule2	JMSSystemResource	Global	
<input type="checkbox"/>	ExtfaceSenderModule	JMSSystemResource	Global	
<input type="checkbox"/>	ExtfaceSenderModule2	JMSSystemResource	Global	
<input type="checkbox"/>	FileUploadJMS	JMSSystemResource	Global	
<input type="checkbox"/>	ReportsJMSModule	JMSSystemResource	Global	
<input type="checkbox"/>	UBSSystemModule	JMSSystemResource	Global	
<div>NewDelete</div>		Showing 1 to 9 of 9Previous Next		

You should see the following resources-

[Customize this table](#)

Summary of Resources

Showing 1 to 2 of 2 Previous Next				
<input type="checkbox"/> Name	Type	JNDI Name	Subdeployment	Targets
<input type="checkbox"/> ExtfaceReceiverQCF	Connection Factory	ExtSystemReceiverQCF	Default Targeting	obdx_server1
<input type="checkbox"/> ExtfaceReceiverQueue	Queue	ExtSystemReceiverQueue	ExtfaceReceiverSubDep	ExtfaceReceiverServer
Showing 1 to 2 of 2 Previous Next				

The JMS queue is now complete and can be accessed using the JNDI names

ExtSystemReceiverQCF And **ExtSystemReceiverQueue**.

Note

Repeat the above process from the step **Create File-Store to create the JMS Configuration for Sender module**. Separate JMS Server, Module and Queues would get created for Sender.

4

JMS Creation

- [Sample creation of Queue](#)
This topic provides information on **Sample creation of Queue**.
- [Sample creation of Connection Factory](#)
This topic provides information on **Sample creation of Connection Factory**.
- [Sample Creation of Topic](#)
This topic provides information on **Sample Creation of Topic**.

4.1 Sample creation of Queue

This topic provides information on **Sample creation of Queue**.

1. Step 1:
Go to the path where you want to create the Queue.
(E.g., Home → Services → Messaging → JMS Modules → MultipleTransactionApprovalJMSModule)
Get the lock and edit in WebLogic.
Click on **New**.
Then select uniform Queue from the options.

Back Next Cancel

Choose the type of resource you want to create.

Use these pages to create resources in a JMS system module, such as queues, topics, templates, and connection factories.

Depending on the type of resource you select, you are prompted to enter basic information for creating the resource. For targetable resources, like stand-alone queues and topics, connection factories, distributed queues and topics, foreign servers, and JMS JAF destinations, you can also proceed to targeting pages for selecting appropriate server targets. You can also associate targetable resources with subdeployments, which is an advanced mechanism for grouping JMS module resources and the members to server resources.

<input type="radio"/> Connection Factory	Defines a set of connection configuration parameters that are used to create connections for JMS clients. More Info...
<input type="radio"/> Queue	Defines a point-to-point destination type, which are used for asynchronous peer communications. A message delivered to a queue is distributed to only one consumer. More Info...
<input type="radio"/> Topic	Defines a publish/subscribe destination type, which are used for asynchronous peer communications. A message delivered to a topic is distributed to all topic consumers. More Info...
<input checked="" type="radio"/> Distributed Queue	Defines a set of queues that are distributed on multiple JMS servers, but which are accessible as a single, logical queue to JMS clients. More Info...
<input type="radio"/> Distributed Topic	Defines a set of topics that are distributed on multiple JMS servers, but which are accessible as a single, logical topic to JMS clients. More Info...
<input type="radio"/> Foreign Server	Defines foreign messaging providers or remote WebLogic Server instances that are not part of the current domain. More Info...
<input type="radio"/> Queue	Controls the allocation of system resources available to destinations. More Info...
<input type="radio"/> Destination Sort Key	Defines a unique sort order that destinations can apply to arriving messages. More Info...
<input type="radio"/> JMS Template	Defines a set of default configuration settings for multiple destinations. More Info...
<input type="radio"/> JAF Imported Destinations	Defines a collection of imported store-and-forward (JAF) destinations. A JAF destination is a representation of a queue or topic in a remote server instance or cluster that is imported into the local cluster or server instance, so that the local server instance or cluster can send messages to the remote server instance or cluster. More Info...

2. Step 2 : Then fill in the data such as Name of the Queue and the JNDI Name from the Table given at the start of the document. Then click on **Next**.

Create a New JMS System Module Resource

[Back](#) [Next](#) [Finish](#) [Cancel](#)

JMS Distributed Destination Properties

The following properties will be used to identify your new Distributed Queue. The current module is MultipleTransactionApprovalJMS

* Indicates required fields

What would you like to name your new destination?

* Name:

What JNDI Name would you like to use to look up your new destination?

JNDI Name:

Queue members may be either created uniformly from a common configuration, or created and weighted individually to fine tune performance. How would you like to create queue members?

Destination Type:

Templates provide an efficient means of defining multiple destinations with similar configuration values. Would you like to use a template for this destination?

Template:

[Back](#) [Next](#) [Finish](#) [Cancel](#)

3. Step 3 : Then select on advanced targeting.

Create a New JMS System Module Resource

[Back](#) [Next](#) [Finish](#) [Advanced Targeting](#) [Cancel](#)

The following properties will be used to target your new JMS system module resource

Use this page to view and accept the default targets where this JMS resource will be targeted. The default targets are based on the parent JMS system module targets. If you do not want to accept the default targets, then click **Advanced Targeting** to use the subdeployment mechanism for targeting this resource.

The following JMS module targets will be used as the default targets for your new JMS system module resource. If the module's targets are changed, this resource will also be retargeted appropriately.

Targets :

Clusters
<input type="checkbox"/> obdx_Cluster <ul style="list-style-type: none"> <input type="checkbox"/> All servers in the cluster <input type="checkbox"/> Part of the cluster <input type="checkbox"/> obdx_server1

[Back](#) [Next](#) [Finish](#) [Advanced Targeting](#) [Cancel](#)

4. Step 4 : Then select MultipleTransactionApprovalSD from the subdeployments dropdown and make sure to select MultipleTransactionApprovalJMSServer in the targets and then click on **Finish**.

Select the subdeployment you want to use. If you select (none), no targeting will occur.

Subdeployments: [Create a New Subdeployment](#)

(none)

What targets do you want to assign to **MultipleTransactionApprovalSD**

Targets :

JMS Servers
<input type="checkbox"/> AccountAccessJMServer
<input type="checkbox"/> AuditJMServer
<input type="checkbox"/> AuthJMServer
<input type="checkbox"/> ExtSystemReceiver
<input type="checkbox"/> ExtSystemSender
<input type="checkbox"/> FileUploadJMServer
<input type="checkbox"/> GcfJMServer
<input type="checkbox"/> JPACacheJMServer
<input checked="" type="checkbox"/> MultipleTransactionApprovalJMServer
<input type="checkbox"/> PartyMovementReportJMServer
<input type="checkbox"/> PaymentJMServer
<input type="checkbox"/> PoliciesJMServer
<input type="checkbox"/> ReportsJMServer
<input type="checkbox"/> UserGroupUserJMServer

4.2 Sample creation of Connection Factory

This topic provides information on **Sample creation of Connection Factory**.

1. Step 1:
Go to the path where you want to create a connection Factory.
(E.g., Home → Services → Messaging → JMS Modules → MultipleTransactionApprovalJMSModule)
Get the lock and edit in WebLogic.
Click on **New**. Then select **Connection Factory** from the options.

Note

If the Connection Factory is already present with another Sub deployment and Target please delete it and make it fresh.

[Back](#) [Next](#) [Finish](#) [Cancel](#)

Choose the type of resource you want to create.

Use these pages to create resources in a JMS system module, such as queues, topics, templates, and connection factories.

Depending on the type of resource you select, you are prompted to enter basic information for creating the resource. For targetable resources, like stand-alone queues and topics, connection factories, distributed queues and topics, foreign servers, and JMS SAF destinations, you can also proceed to targeting pages for selecting appropriate server targets. You can also associate targetable resources with subdeployments, which is an advanced mechanism for grouping JMS module resources and the members to server resources.

<input type="radio"/> Connection Factory	Defines a set of connection configuration parameters that are used to create connections for JMS clients. More Info...
<input type="radio"/> Queue	Defines a point-to-point destination type, which are used for asynchronous peer communications. A message delivered to a queue is distributed to only one consumer. More Info...
<input type="radio"/> Topic	Defines a publish/subscribe destination type, which are used for asynchronous peer communications. A message delivered to a topic is distributed to all topic consumers. More Info...
<input checked="" type="radio"/> Distributed Queue	Defines a set of queues that are distributed on multiple JMS servers, but which are accessible as a single, logical queue to JMS clients. More Info...
<input type="radio"/> Distributed Topic	Defines a set of topics that are distributed on multiple JMS servers, but which are accessible as a single, logical topic to JMS clients. More Info...
<input type="radio"/> Foreign Server	Defines foreign messaging providers or remote WebLogic Server instances that are not part of the current domain. More Info...
<input type="radio"/> Quote	Controls the allotment of system resources available to destinations. More Info...
<input type="radio"/> Destination Sort Key	Defines a unique sort order that destinations can apply to arriving messages. More Info...
<input type="radio"/> JMS Template	Defines a set of default configuration settings for multiple destinations. More Info...
<input type="radio"/> SAF Imported Destinations	Defines a collection of imported store-and-forward (SAF) destinations. A SAF destination is a representation of a queue or topic in a remote server instance or cluster that is imported into the local cluster or server instance, so that the local server instance or cluster can send messages to the remote server instance or cluster. More Info...

2. Step 2 : Then fill out the Name and JNDI name of the connection Factory that you are creating.

Create a New JMS System Module Resource

[Back](#) [Next](#) [Finish](#) [Cancel](#)

Connection Factory Properties

The following properties will be used to identify your new connection factory. The current module is MultipleTransactionApprovalQMS.

* Indicates required fields

What would you like to name your new connection factory?

* Name:

What JNDI name would you like to use to look up your new connection factory?

JNDI Name:

The Connection Factory Subscription Sharing Policy Subscribers can be used to control which subscribers can access new subscriptions. Should subscriptions created using the factory be sharable?

Subscription Sharing Policy:

The Client ID Policy indicates whether more than one JMS connection can use the same Client ID. Oracle recommends setting the Client ID policy to unrestricted if sharing durable subscribers. Subscriptions created with different Client ID policies are always treated as independent subscriptions. What Client ID Policy would you like to use?

Client ID Policy:

A connection factory can limit the number of messages that can queue for an asynchronous session. Should this connection factory impose a limit?

Maximum Messages per Session:

Should this connection factory create sessions that are JTA aware, and create XA queues and XA topics?

☒ XA Connection Factory Enabled

Should the authenticated user name be attached to sent messages if the JMS destination is configured to support this behavior?

☐ Attach JMX UserID

[Back](#) [Next](#) [Finish](#) [Cancel](#)

3. Step 3 : Then on the next page. Select advanced Targeting.

[Back](#) [Next](#) [Finish](#) [Advanced Targeting](#) [Cancel](#)

The following properties will be used to target your new JMS system module resource

Use this page to view and accept the default targets where this JMS resource will be targeted. The default targets are based on the parent JMS system module targets. If you do not want to accept the default targets, then click **Advanced Targeting** to use the subdeployment mechanism for targeting this resource.

The following JMS module targets will be used as the default targets for your new JMS system module resource. If the module's targets are changed, this resource will also be retargeted appropriately.

And then select MultipleTransactionApprovalSD from the Sub deployments dropdown.

Select the subdeployment you want to use. If you select (none), no targeting will occur.

Subdeployments: MultipleTransactionApprovalSD ▼ Create a New Subdeployment

(none)

What targets do you want to assign to: MultipleTransactionApprovalSD

Targets :

Then select MultipleTransactionApprovalJMServer from the targets and then click on **Finish**.

JMS Servers
<input type="checkbox"/> AccountAccessJMServer
<input type="checkbox"/> AuditJMServer
<input type="checkbox"/> AuthJMServer
<input type="checkbox"/> ExtSystemReceiver
<input type="checkbox"/> ExtSystemSender
<input type="checkbox"/> FileUploadJMServer
<input type="checkbox"/> GcifJMServer
<input type="checkbox"/> JPAcacheJMServer
<input checked="" type="checkbox"/> MultipleTransactionApprovalJMServer
<input type="checkbox"/> PartyMovementReportJMServer
<input type="checkbox"/> PaymentJMServer
<input type="checkbox"/> PoliciesJMServer
<input type="checkbox"/> ReportsJMServer
<input type="checkbox"/> UserGroupUserJMServer

This process need to be repeated for all the Queues and Connection Factories given in the table a the start of the document.

Once the entire process is done. The final list of the Queues and the Connection Factories should look something like this.

Summary of Resources

Click the **Lock & Edit** button in the Change Center to activate all the buttons on this page.

[New](#) [Delete](#) Showing 1 to 5 of 5 [Previous](#) | [Next](#)

<input type="checkbox"/>	Name ↕	Type	JNDI Name	Subdeployment	Targets
<input type="checkbox"/>	MultipleTransactionServiceInvocationQCF	Connection Factory	MultipleTransactionServiceInvocationQCF	MultipleTransactionApprovalSD	MultipleTransactionApprovalJMS Server
<input type="checkbox"/>	MultipleTransactionServiceInvocationQueue	Uniform Distributed Queue	MultipleTransactionServiceInvocationQueue	MultipleTransactionApprovalSD	MultipleTransactionApprovalJMS Server
<input type="checkbox"/>	MultipleTransactionServiceInvocationResponseQCF	Connection Factory	MultipleTransactionServiceInvocationResponseQCF	MultipleTransactionApprovalSD	MultipleTransactionApprovalJMS Server
<input type="checkbox"/>	MultipleTransactionServiceInvocationResponseQueue	Uniform Distributed Queue	MultipleTransactionServiceInvocationResponseQueue	MultipleTransactionApprovalSD	MultipleTransactionApprovalJMS Server
<input type="checkbox"/>	MultipleTransactionServiceInvocationTopic	Uniform Distributed Topic	MultipleTransactionServiceInvocationTopic	Default Targeting	obdx_cluster

[New](#) [Delete](#) Showing 1 to 5 of 5 [Previous](#) | [Next](#)

And the sub deployments should look something like this.

Subdeployments

Click the **Lock & Edit** button in the Change Center to activate all the buttons on this page.

[New](#) [Delete](#) Showing 1 to 2 of 2 [Previous](#) | [Next](#)

Name ↕	Resources	Targets
Default Targeting		obdx_cluster
MultipleTransactionApprovalSD	MultipleTransactionServiceInvocationResponseQueue, MultipleTransactionServiceInvocationQueue, MultipleTransactionServiceInvocationQCF, MultipleTransactionServiceInvocationResponseQCF	MultipleTransactionApprovalJMS Server

[New](#) [Delete](#) Showing 1 to 2 of 2 [Previous](#) | [Next](#)

4.3 Sample Creation of Topic

This topic provides information on **Sample Creation of Topic**.

- Step 1:
Go to the following path : Home → Services → Messaging → JMS Modules → MultipleTransactionApprovalJMSModule
Get the lock and edit in WebLogic.
Click on **New**.
Then select Distributed Topic from the options.

<input type="radio"/> Connection Factory	Defines a set of connection configuration parameters that are used to create connections for JMS clients. More Info...
<input type="radio"/> Queue	Defines a point-to-point destination type, which are used for asynchronous peer communications. A message delivered to a queue is distributed to only one consumer. More Info...
<input type="radio"/> Topic	Defines a publish/subscribe destination type, which are used for asynchronous peer communications. A message delivered to a topic is distributed to all topic consumers. More Info...
<input type="radio"/> Distributed Queue	Defines a set of queues that are distributed on multiple JMS servers, but which are accessible as a single, logical queue to JMS clients. More Info...
<input checked="" type="radio"/> Distributed Topic	Defines a set of topics that are distributed on multiple JMS servers, but which are accessible as a single, logical topic to JMS clients. More Info...
<input type="radio"/> Foreign Server	Defines foreign messaging providers or remote WebLogic Server instances that are not part of the current domain. More Info...
<input type="radio"/> Quota	Controls the allotment of system resources available to destinations. More Info...
<input type="radio"/> Destination Sort Key	Defines a unique sort order that destinations can apply to arriving messages. More Info...
<input type="radio"/> JMS Template	Defines a set of default configuration settings for multiple destinations. More Info...

- Step 2 : Then fill out the Name and JNDI name of the connection Factory that you are creating.

Create a New JMS System Module Resource

[Back](#) [Next](#) [Finish](#) [Cancel](#)

JMS Distributed Destination Properties

The following properties will be used to identify your new Distributed Topic. The current module is MultipleTransactionApprovalJMS

* Indicates required fields

What would you like to name your new destination?

* Name:

What JNDI Name would you like to use to look up your new destination?

JNDI Name:

Topic members may be either created uniformly from a common configuration, or created and weighted individually to fine tune performance. How would you like to create topic members?

Destination Type:

The Forwarding Policy for a topic defines how messages are forwarded to members. What forwarding policy would you like to use for this new destination?

Forwarding Policy:

Templates provide an efficient means of defining multiple destinations with similar configuration values. Would you like to use a template for this destination?

Template:

[Back](#) [Next](#) [Finish](#) [Cancel](#)

Note

Make sure the Forwarding policy is partitioned.

The Forwarding Policy for a topic defines how messages are forwarded to members. What forwarding policy would you like to use for this new destination?

Forwarding Policy:

Templates provide an efficient means of defining multiple destinations with similar configuration values. Would you like to use a template for this destination?

3. Step 3 : Click on Finish

Use this page to view and accept the default targets where this JMS resource will be targeted. The default targets are accept the default targets, then click **Advanced Targeting** to use the subdeployment mechanism for targeting this resource.

The following JMS module targets will be used as the default targets for your new JMS system module resource. If the appropriately.

Targets :

Clusters

☒ **obdx_Cluster**

☐ **All servers in the cluster**

☐ **Part of the cluster**

☐ **obdx_server1**

[Back](#) [Next](#) [Finish](#) [Advanced Targeting](#) [Cancel](#)

Sample topic is created

Home > Summary of JMS Modules > MultipleTransactionApprovalJMS > Summary of Services > Summary of Service JMS > Summary of JMS Modules > GcifJMS

Messages

✔

The JMS distributed topic was created successfully.

Settings for GcifJMS

<input type="checkbox"/>	OnboardingDraftDeleteTopic	Connection Factory	OnboardingDraftDeleteTopic	obdc	GcifJMSServer
<input type="checkbox"/>	OnboardingDraftDeleteTopic	Uniform Distributed Topic	OnboardingDraftDeleteTopic	Default Targeting	obdc_Cluster
<input type="checkbox"/>	SampleQueue	Uniform Distributed Queue	SampleQueue	GcifSD	GcifJMSServer
<input type="checkbox"/>	SampleTopic1	Uniform Distributed Topic	SampleTopic1	Default Targeting	obdc_Cluster
<input type="checkbox"/>	UBSNotificationTCF	Connection Factory	UBSNotificationTCF	GcifSD	GcifJMSServer
<div>NewDelete</div>					
Showing 1 to 45 of 45 PreviousNext					

5

JMS Configuration

- [Access Functionality](#)
- [Audit Functionality](#)
- [Authentication Functionality](#)
- [ExtSystemReceiver Functionality](#)
- [ExtSystemSender Functionality](#)
- [File Upload Functionality](#)
- [GCIF Functionality](#)
- [jpa-cache Functionality](#)
- [Multiple Transaction Approval Functionality](#)
- [NotificationServer Functionality](#)
- [OBPMSYSTEMModule](#)
- [Payment Functionality](#)
- [Policies Functionality](#)
- [Reports Functionality](#)
- [UBSSystemModule functionality](#)
- [UserGroupUser Functionality](#)
- [Party Movement Report Functionality](#)

5.1 Access Functionality

- [Regular Access Functionality](#)
This topic provides information on **Regular Access Functionality**.
- [Account Access for a particular bucket](#)
This topic provides information on **Account Access for a particular bucket**.
- [Account Access in Bulk](#)
This topic provides information on **Account Access in Bulk**.
- [Subdeployment View](#)
This topic provides information on **Subdeployment View**.

5.1.1 Regular Access Functionality

This topic provides information on **Regular Access Functionality**.

Changes to User Account Access when there is change in Party Account Access.

For more information on fields, refer to the field description table.

Table 5-1 Table 1

Sr No.	Name	Type	JNDI Name	Subdeployments	Targest
1.	AccountAccessQCF	Connection Factory	AccountAccessQCF	Default Targeting	obdx_cluster
2.	ACCOUNTACCESSQUEUE	Uniform Distributed Queue	ACCOUNTACCESSQUEUE	AccessSD	AccessJMSModule

5.1.2 Account Access for a particular bucket

This topic provides information on **Account Access for a particular bucket**.

For splitting bulk account access request to multiple requests. If count of accounts is greater than dayone config value then request is split into N buckets which are handled parallely.

For more information on fields, refer to the field description table.

Table 5-2 Table 1

Sr No.	Name	Type	JNDI Name	Subdeployments	Targest
1	ACCOUNT_ACCESS_ASYN_BUCKET_QCF	Connection Factory	ACCOUNT_ACCESS_ASYN_BUCKET_QCF	Default Targeting	obdx_cluster
2.	ACCOUNT_ACCESS_ASYN_BUCKET_QUEUE	Uniform Distributed Queue	ACCOUNT_ACCESS_ASYN_BUCKET_QUEUE	AccessSD	AccessJMSModule

5.1.3 Account Access in Bulk

This topic provides information on **Account Access in Bulk**.

Each request received on this queue will call Host in paginated manner and update status once completed.

For more information on fields, refer to the field description table.

Table 5-3 Table 1

Sr No.	Name	Type	JNDI Name	Subdeployments	Targest
1.	ACCOUNT_ACCESS_ASYN_BULK_QCF	Connection Factory	ACCOUNT_ACCESS_ASYN_BULK_QCF	Default Targeting	obdx_cluster
2.	ACCOUNT_ACCESS_ASYN_BULK_QUEUE	Uniform Distributed Queue	ACCOUNT_ACCESS_ASYN_BULK_QUEUE	AccessSD	AccessJMSModule

5.1.4 Subdeployment View

This topic provides information on **Subdeployment View**.

For more information on fields, refer to the field description table.

Table 5-4 Table 1

Sr No.	Name	Resources	Subdeployment
1.	AccessSD	ACCOUNTACCESSQUEUE, ACCOUNT_ACCESS_ASYNC_BUCKET_ QUEUE, ACCOUNT_ACCESS_ASYNC_BULK_Q UEUE	AccessJMSModule

5.2 Audit Functionality

- [Audit Functionality](#)
This topic provides information on **Audit Functionality**.
- [Subdeployment View](#)
This topic provides information on **Subdeployment View**.

5.2.1 Audit Functionality

This topic provides information on **Audit Functionality**.

For more information on fields, refer to the field description table.

Table 5-5 Table 1

Sr No.	Name	Type	JNDI Name	Subdeployments	Target
1.	API_AUDIT_QUEUE	Uniform Distributed Queue	API_AUDIT_QUEUE	AuditSD	AuditJMS Server
2.	AUDITQCF	Connection Factory	AUDITQCF	Default Targeting	obdx_cluster
3.	AUDIT_ANALYTICS_QUEUE	Uniform Distributed Queue	AUDIT_ANALYTICS_QUEUE	AuditSD	AuditJMS Server
4.	AUDIT_QUEUE	Uniform Distributed Queue	AUDIT_QUEUE	AuditSD	AuditJMS Server

5.2.2 Subdeployment View

This topic provides information on **Subdeployment View**.

For more information on fields, refer to the field description table.

Table 5-6 Table 1

Sr No.	Name	Resources	Subdeployment
1.	AuditSD	AUDIT_QUEUE, API_AUDIT_QUEUE, AUDIT_ANALYTICS_QUEUE	AuditJMSServer

5.3 Authentication Functionality

- [Authentication Functionality](#)
This topic provides information on **Authentication Functionality**.
- [Subdeployment View](#)
This topic provides information on **Subdeployment View**.

5.3.1 Authentication Functionality

This topic provides information on **Authentication Functionality**.

For more information on fields, refer to the field description table.

Table 5-7 Table 1

Sr No.	Name	Type	JNDI Name	Subdeployments	Target
1	AUTHAUDITQCF	Connection Factory	AUTHAUDITQCF	Default Targeting	obdx_cluster
2.	AUTH_API_AUDIT_QUEUE	Uniform Distributed Queue	AUTH_API_AUDIT_QUEUE	AuthSD	AuthJMS Module

5.3.2 Subdeployment View

This topic provides information on **Subdeployment View**.

For more information on fields, refer to the field description table.

Table 5-8 Table 1

Sr No.	Name	Resources	Subdeployment
1.	AuthSD	AUTH_API_AUDIT_QUEUE	AuthJMSModule

5.4 ExtSystemReceiver Functionality

- [ExtSystemReceiver Functionality](#)
This topic provides information on **ExtSystemReceiver Functionality**.
- [Subdeployment View](#)
This topic provides information on **Subdeployment View**.

5.4.1 ExtSystemReceiver Functionality

This topic provides information on **ExtSystemReceiver Functionality**.
For more information on fields, refer to the field description table.

Table 5-9 Table 1

Sr No.	Name	Type	JNDI Name	Subdeployments	T a r g e t
1.	ExtSystemReceiverQ CF	Connection Factory	ExtSystemReceiverQ CF	Default Targeting	b o d y
2.	ExtSystemReceiverQu eue	Uniform Distributed Queue	ExtSystemReceiverQu eue	ExtSystemReceiverSub	E x t S y s t e m R e c e i v e r

5.4.2 Subdeployment View

This topic provides information on **Subdeployment View**.
For more information on fields, refer to the field description table.

Table 5-10 Table 1

Sr No.	Name	Resources	Subdeployment
1	ExtSystemReceiverSub	ExtSystemReceiverQueue	ExtSystemReceiver

5.5 ExtSystemSender Functionality

- [ExtSystemSender Functionality](#)
This topic provides information on **ExtSystemSender Functionality**.
- [Subdeployment View](#)
This topic provides information on **Subdeployment View**.

5.5.1 ExtSystemSender Functionality

This topic provides information on **ExtSystemSender Functionality**.

For more information on fields, refer to the field description table.

Table 5-11 Table 1

Sr No.	Name	Type	JNDI Name	Subdeployments	Target
1.	ExtSystemSenderQCF	Connection Factory	ExtSystemSenderQCF	Default Targeting	obdx_cluster
2.	ExtSystemSenderQueue	Uniform Distributed Queue	ExtSystemSenderQueue	ExtSystemSenderSub	ExtSystemSender

5.5.2 Subdeployment View

This topic provides information on **Subdeployment View**.

For more information on fields, refer to the field description table.

Table 5-12 Table 1

Sr No.	Name	Resources	Subdeployment
1	ExtSystemSenderSub	ExtSystemSenderQueue	ExtSystemSender

5.6 File Upload Functionality

- [Bulk CMS functionality](#)
This topic provides information on **Bulk CMS functionality**.
- [BULK CORPORATE LOAN PROCESSING AND APPROVAL](#)
This topic provides information on **Bulk Corporate Loan Processing and Approval**.
- [BULK Electronic Bill Payment Processing and Approval](#)
This topic provides information on **BULK Electronic Bill Payment Processing and Approval**.
- [BULK PAYMENT FUNCTIONALITY](#)
This topic provides information on **Bulk Payment Functionality**.
- [BULK SCFCM FUNCTIONALITY](#)
This topic provides information on **Bulk SCFCM Functionality**.

- [Subdeployment View](#)
This topic provides information on **Subdeployment View**.

5.6.1 Bulk CMS functionality

This topic provides information on **Bulk CMS functionality**.

For more information on fields, refer to the field description table.

Table 5-13 Table 1

Sr No.	Name	Type	JNDI Name	Subdeployments	Targest
1.	BULKCMS_PREPROCESS	Uniform Distributed Queue	BULKCMS_PREPROCESS	FileUploadSD	FileUploadJMSServer
2.	BULKCMS_RAPPROVAL	Uniform Distributed Queue	BULKCMS_RAPPROVAL	FileUploadSD	FileUploadJMSServer

5.6.2 BULK CORPORATE LOAN PROCESSING AND APPROVAL

This topic provides information on **Bulk Corporate Loan Processing and Approval**.

For more information on fields, refer to the field description table.

Table 5-14 Table 1

Sr No.	Name	Type	JNDI Name	Subdeployments	Targest
1.	BULKCORPORATELOAN_PREPROCESS	Uniform Distributed Queue	BULKCORPORATELOAN_PREPROCESS	Default Targeting	obdx_cluster
2.	BULKCORPORATELOAN_RAPPROVAL	Uniform Distributed Queue	BULKCORPORATELOAN_RAPPROVAL	Default Targeting	obdx_cluster

5.6.3 BULK Electronic Bill Payment Processing and Approval

This topic provides information on **BULK Electronic Bill Payment Processing and Approval**.

For more information on fields, refer to the field description table.

Table 5-15 Table 1

Sr No.	Name	Type	JNDI Name	Subdeployments	Targest
1.	BULKEBPP_PREPROCESS	Uniform Distributed Queue	BULKEBPP_PREPROCESS	FileUploadSD	FileUploadJMSServer
2.	BULKEBPP_RAPPROVAL	Uniform Distributed Queue	BULKEBPP_RAPPROVAL	FileUploadSD	FileUploadJMSServer

Sr No.	Name	Type	JNDI Name	Subdeployments	Targest
1.	BULKEBPP_EP PROCESS	Uniform Distributed Queue	BULKEBPP_EP PROCESS	FileUploadSD	FileUploadJMS Server
2.	BULKEBPP_RA PPROVAL	Uniform Distributed Queue	BULKEBPP_RA PPROVAL	FileUploadSD	FileUploadJMS Server

5.6.4 BULK PAYMENT FUNCTIONALITY

This topic provides information on **Bulk Payment Functionality**.

For more information on fields, refer to the field description table.

Table 5-16 Table 1

Sr No.	Name	Type	JNDI Name	Subdeployments	Targest
1.	BULKPAYMENT_PRE PROCESS	Uniform Distributed Queue	BULKPAYMENT_PRE PROCESS	FileUpload SD	FileUploadJMSS erver
2.	BULKPAYMENT_PRO CESS	Uniform Distributed Queue	BULKPAYMENT_PRO CESS	FileUpload SD	FileUploadJMSS erver
3.	BULKPAYMENT_RAP PROVAL	Uniform Distributed Queue	BULKPAYMENT_RAP PROVAL	FileUpload SD	FileUploadJMSS erver

5.6.5 BULK SCFCM FUNCTIONALITY

This topic provides information on **Bulk SCFCM Functionality**.

For more information on fields, refer to the field description table.

Table 5-17 Table 1

Sr No.	Name	Type	JNDI Name	Subdeployments	Targest
1.	BULKSCFCM_PREPR OCESS	Uniform Distributed Queue	BULKSCFCM_PREPR OCESS	FileUpload SD	FileUploadJMSS erver

5.6.6 Subdeployment View

This topic provides information on **Subdeployment View**.

For more information on fields, refer to the field description table.

Table 5-18 Table 1

Sr No.	Name	Resources	Subdeployment
1	FileUploadSD	RAPPROVAL, PREPROCESS, BULKVAM_RAPP ROVAL, BULKVAM_PREP ROCESS, BULKTRADEFINA NCE_RAPPROVAL , BULKTRADEFINA NCE_PREPROCE SS, BULKSCFCM_RA PPROVAL, BULKSCFCM_PR EPROCESS, BULKPAYMENT_R APPROVAL, BULKPAYMENT_P REPROCESS, BULKEBPP_RAPP ROVAL, BULKEBPP_PREP ROCESS, BULKCMS_RAPP ROVAL, BULKCMS_PREP ROCESS, BULKPAYMENT_P ROCESS	FileUploadJMSServer

5.7 GCIF Functionality

- [Onboarding Draft updation functionality](#)
This topic provides information on **Onboarding Draft updation functionality**.
- [Access point functionality](#)
This topic provides information on **Access point functionality**.
- [Report mapping functionality at GCIF level](#)
This topic provides information on **Report mapping functionality at GCIF level**.
- [GCIF onboarding draft functionality](#)
This topic provides information on **GCIF onboarding draft functionality**.
- [GCIF party functionality](#)
This topic provides information on **GCIF party functionality**.
- [GCIF processing party](#)
This topic provides information on **GCIF processing party**.
- [GCIF profile creation and updation functionality](#)
This topic provides information on **GCIF profile creation and updation functionality**.
- [GCIF report mapping functionality at user level](#)
This topic provides information on **GCIF report mapping functionality at user level**.

- [GCIF Rule functionality](#)
This topic provides information on **GCIF Rule functionality**.
- [GCIF USER ACCESS functionality](#)
This topic provides information on **GCIF USER ACCESS functionality**.
- [GCIF USERGROUP functionality](#)
This topic provides information on **GCIF USERGROUP functionality**.
- [GCIF User create and update functionality](#)
This topic provides information on **GCIF User create and update functionality**.
- [GCIF workflow create functionality](#)
This topic provides information on **GCIF workflow create functionality**.
- [GCIF Onboarding Draft cancellation functionality](#)
This topic provides information on **GCIF Onboarding Draft cancellation functionality**.
- [Subdeployment View](#)
This topic provides information on **Subdeployment View**.

5.7.1 Onboarding Draft updation functionality

This topic provides information on **Onboarding Draft updation functionality**.

Updation of GCIF Status after the GCIF is System Rejected by approval.

For more information on fields, refer to the field description table.

Table 5-19 Table 1

Sr No.	Name	Type	JNDI Name	Subdeployments	Target
1.	GcifOnboardingDraftUpdateQCF	Connection Factory	GcifOnboardingDraftUpdateQCF	Default Targeting	obdx_cluster
2.	GcifOnboardingDraftUpdateQueue	Uniform Distributed Queue	GcifOnboardingDraftUpdateQueue	Default Targeting	obdx_cluster

5.7.2 Access point functionality

This topic provides information on **Access point functionality**.

Changes to Party Account Access is handled by these queues.

For more information on fields, refer to the field description table.

Table 5-20 Table 1

Sr No.	Name	Type	JNDI Name	Subdeployments	Target
1.	GCIF_ACCESS_POINT_UPDATE_QCF	Connection Factory	GCIF_ACCESS_POINT_UPDATE_QCF	Default Targeting	obdx_cluster
2.	GCIF_ACCESS_POINT_UPDATE_QUEUE	Uniform Distributed Queue	GCIF_ACCESS_POINT_UPDATE_QUEUE	Default Targeting	obdx_cluster
3.	GCIF_ACCESS_SUBMIT_QCF	Connection Factory	GCIF_ACCESS_SUBMIT_QCF	Default Targeting	obdx_cluster

Table 5-20 (Cont.) Table 1

Sr No.	Name	Type	JNDI Name	Subdeployments	Target
4.	GCIF_ACCESS_SUBMIT_QUEUE	Uniform Distributed Queue	GCIF_ACCESS_SUBMIT_QUEUE	Default Targeting	obdx_cluster

5.7.3 Report mapping functionality at GCIF level

This topic provides information on **Report mapping functionality at GCIF level**.

For more information on fields, refer to the field description table.

Table 5-21 Table 1

Sr No.	Name	Type	JNDI Name	Subdeployments	Target
1.	GCIF_GCIFREPORT_MAPPING_QCF	Connection Factory	GCIF_GCIFREPORT_MAPPING_QCF	Default Targeting	obdx_cluster
2.	GCIF_GCIFREPORT_MAPPING_QUEUE	Uniform Distributed Queue	GCIF_GCIFREPORT_MAPPING_QUEUE	Default Targeting	obdx_cluster

5.7.4 GCIF onboarding draft functionality

This topic provides information on **GCIF onboarding draft functionality**.

Submission of GCIF Onboarding Wizard.

For more information on fields, refer to the field description table.

Table 5-22 Table 1

Sr No.	Name	Type	JNDI Name	Subdeployments	Target
1.	GCIF_ONBOARDING_DRAFT_QCF	Connection Factory	GCIF_ONBOARDING_DRAFT_QCF	Default Targeting	obdx_cluster
2.	GCIF_ONBOARDING_DRAFT_QUEUE	Uniform Distributed Queue	GCIF_ONBOARDING_DRAFT_QUEUE	Default Targeting	obdx_cluster

5.7.5 GCIF party functionality

This topic provides information on **GCIF party functionality**.

For more information on fields, refer to the field description table.

Table 5-23 Table 1

Sr No.	Name	Type	JNDI Name	Subdeployments	Targest
1.	GCIF_PARTY_FINAL_MIGRATION_QCF	Connection Factory	GCIF_PARTY_FINAL_MIGRATION_QCF	Default Targeting	obdx_cluster
2.	GCIF_PARTY_FINAL_MIGRATION_QUEUE	Uniform Distributed Queue	GCIF_PARTY_FINAL_MIGRATION_QUEUE	Default Targeting	obdx_cluster
3.	GCIF_PARTY_MOVEMENT_REPORT_RESPONSE_QCF	Connection Factory	GCIF_PARTY_MOVEMENT_REPORT_RESPONSE_QCF	Default Targeting	obdx_cluster
4.	GCIF_PARTY_MOVEMENT_REPORT_RESPONSE_QUEUE	Uniform Distributed Queue	GCIF_PARTY_MOVEMENT_REPORT_RESPONSE_QUEUE	Default Targeting	obdx_cluster

5.7.6 GCIF processing party

This topic provides information on **GCIF processing party**.

Updation of GCIF Processing status based on status of various transactions performed in the individual steps.

For more information on fields, refer to the field description table.

Table 5-24 Table 1

Sr No.	Name	Type	JNDI Name	Subdeployments	Targest
1.	GCIF_PROCESSING_STATUS_QCF	Connection Factory	GCIF_PROCESSING_STATUS_QCF	Default Targeting	obdx_cluster
2.	GCIF_PROCESSING_STATUS_QUEUE	Uniform Distributed Queue	GCIF_PROCESSING_STATUS_QUEUE	Default Targeting	obdx_cluster

5.7.7 GCIF profile creation and updation functionality

This topic provides information on **GCIF profile creation and updation functionality**.

For more information on fields, refer to the field description table.

Table 5-25 Table 1

Sr No.	Name	Type	JNDI Name	Subdeployments	Targest
1.	GCIF_PROFILE_CREATION_QCF	Connection Factory	GCIF_PROFILE_CREATION_QCF	Default Targeting	obdx_cluster
2.	GCIF_PROFILE_CREATION_QUEUE	Uniform Distributed Queue	GCIF_PROFILE_CREATION_QUEUE	Default Targeting	obdx_cluster

Table 5-25 (Cont.) Table 1

Sr No.	Name	Type	JNDI Name	Subdeployments	Targest
3.	GCIF_PROFILE_UPD ATE_QCF	Connection Factory	GCIF_PROFILE_UPD ATE_QCF	Default Targeting	obdx_clust er
4.	GCIF_PROFILE_UPD ATE_QUEUE	Uniform Distributed Queue	GCIF_PROFILE_UPD ATE_QUEUE	Default Targeting	obdx_clust er

5.7.8 GCIF report mapping functionality at user level

This topic provides information on **GCIF report mapping functionality at user level**.

For more information on fields, refer to the field description table.

Table 5-26 Table 1

Sr No.	Name	Type	JNDI Name	Subdeployments	Targest
1.	GCIF_REPORT_MAP PING_QCF	Connection Factory	GCIF_REPORT_MAP PING_QCF	Default Targeting	obdx_clust er
2.	GCIF_REPORT_MAP PING_QUEUE	Uniform Distributed Queue	GCIF_REPORT_MAP PING_QUEUE	Default Targeting	obdx_clust er

5.7.9 GCIF Rule functionality

This topic provides information on **GCIF Rule functionality**.

For more information on fields, refer to the field description table.

Table 5-27 Table 1

Sr No.	Name	Type	JNDI Name	Subdeployments	Targest
1.	GCIF_RULE_CREATE_ QCF	Connection Factory	GCIF_RULE_CREATE_ QCF	Default Targeting	obdx_clust er
2.	GCIF_RULE_CREATE_ QUEUE	Uniform Distributed Queue	GCIF_RULE_CREATE_ QUEUE	Default Targeting	obdx_clust er
3.	GCIF_RULE_DELETE_ QCF	Connection Factory	GCIF_RULE_DELETE_ QCF	Default Targeting	obdx_clust er
4.	GCIF_RULE_DELETE_ QUEUE	Uniform Distributed Queue	GCIF_RULE_DELETE_ QUEUE	Default Targeting	obdx_clust er
5.	GCIF_RULE_UPDATE_ QCF	Connection Factory	GCIF_RULE_UPDATE_ QCF	Default Targeting	obdx_clust er
6.	GCIF_RULE_UPDATE_ QUEUE	Uniform Distributed Queue	GCIF_RULE_UPDATE_ QUEUE	Default Targeting	obdx_clust er

5.7.10 GCIF USER ACCESS functionality

This topic provides information on **GCIF USER ACCESS functionality**.

Any changes to User account access in GCIF flow will be handled by these queues.

For more information on fields, refer to the field description table.

Table 5-28 Table 1

Sr No.	Name	Type	JNDI Name	Subdeployments	Targest
1.	GCIF_USERACCESS_SUBMIT_QCF	Connection Factory	GCIF_USERACCESS_SUBMIT_QCF	Default Targeting	obdx_cluster
2.	GCIF_USERACCESS_SUBMIT_QUEUE	Uniform Distributed Queue	GCIF_USERACCESS_SUBMIT_QUEUE	Default Targeting	obdx_cluster

5.7.11 GCIF USERGROUP functionality

This topic provides information on **GCIF USERGROUP functionality**.

Create and Update UserGroup for a GCIf via Onboarding Wizard.

For more information on fields, refer to the field description table.

Table 5-29 Table 1

Sr No.	Name	Type	JNDI Name	Subdeployments	Targest
1.	GCIF_USERGROUP_CREATE_QCF	Connection Factory	GCIF_USERGROUP_CREATE_QCF	Default Targeting	obdx_cluster
2.	GCIF_USERGROUP_CREATE_QUEUE	Uniform Distributed Queue	GCIF_USERGROUP_CREATE_QUEUE	Default Targeting	obdx_cluster
3.	GCIF_USERGROUP_UPDATE_QCF	Connection Factory	GCIF_USERGROUP_UPDATE_QCF	Default Targeting	obdx_cluster
4.	GCIF_USERGROUP_UPDATE_QUEUE	Uniform Distributed Queue	GCIF_USERGROUP_UPDATE_QUEUE	Default Targeting	obdx_cluster

5.7.12 GCIF User create and update functionality

This topic provides information on **GCIF User create and update functionality**.

Create and Update User for a GCIf via Onboarding Wizard.

For more information on fields, refer to the field description table.

Table 5-30 Table 1

Sr No.	Name	Type	JNDI Name	Subdeployments	Target
1.	GCIF_USER_CREATE_QCF	Connection Factory	GCIF_USER_CREATE_QCF	Default Targeting	obdx_cluster
2.	GCIF_USER_CREATE_QUEUE	Uniform Distributed Queue	GCIF_USER_CREATE_QUEUE	Default Targeting	obdx_cluster
3.	GCIF_USER_UPDATE_QCF	Connection Factory	GCIF_USER_UPDATE_QCF	Default Targeting	obdx_cluster
4.	GCIF_USER_UPDATE_QUEUE	Uniform Distributed Queue	GCIF_USER_UPDATE_QUEUE	Default Targeting	obdx_cluster

5.7.13 GCIF workflow create functionality

This topic provides information on **GCIF workflow create functionality**.

Create and Update Workflow for a GCIF via Onboarding Wizard.

For more information on fields, refer to the field description table.

Table 5-31 Table 1

Sr No.	Name	Type	JNDI Name	Subdeployments	Target
1.	GCIF_WORKFLOW_CREATE_QCF	Connection Factory	GCIF_WORKFLOW_CREATE_QCF	Default Targeting	obdx_cluster
2.	GCIF_WORKFLOW_CREATE_QUEUE	Uniform Distributed Queue	GCIF_WORKFLOW_CREATE_QUEUE	Default Targeting	obdx_cluster
3.	GCIF_WORKFLOW_UPDATE_QCF	Connection Factory	GCIF_WORKFLOW_UPDATE_QCF	Default Targeting	obdx_cluster
4.	GCIF_WORKFLOW_UPDATE_QUEUE	Uniform Distributed Queue	GCIF_WORKFLOW_UPDATE_QUEUE	Default Targeting	obdx_cluster

5.7.14 GCIF Onboarding Draft cancellation functionality

This topic provides information on **GCIF Onboarding Draft cancellation functionality**.

The Following Topic and QCF is used in the below two cases :

1. Used in case of Cancellation of GCIF by maker.
2. Used in case where the GCIF is rejected by one of its approvers.

For more information on fields, refer to the field description table.

Table 5-32 Table 1

Sr No.	Name	Type	JNDI Name	Subdeployments	Target
1.	OnboardingDraftDeleteQCF	Connection Factory	OnboardingDraftDeleteQCF	Default Targeting	obdx_cluster
2.	OnboardingDraftDeleteTopic	Uniform Distributed Queue	OnboardingDraftDeleteTopic	Default Targeting	obdx_cluster

5.7.15 Subdeployment View

This topic provides information on **Subdeployment View**.

For more information on fields, refer to the field description table.

Table 5-33 Table 1

Sr No.	Name	Resources	Subdeployment
1	GcifSD		GcifJmsServer

5.8 jpa-cache Functionality

- [jpa-cache Functionality](#)
This topic provides information on **jpa-cache Functionality**.
- [Subdeployment View](#)
This topic provides information on **Subdeployment View**.

5.8.1 jpa-cache Functionality

This topic provides information on **jpa-cache Functionality**.

For more information on fields, refer to the field description table.

Table 5-34 Table 1

Sr No.	Name	Type	JNDI Name	Subdeployments	Target
1.	ms/jpa-cache-cf	Connection Factory	jms/jpa-cache-cf	Default Targeting	obdx_cluster
2.	jms/jpa-cache-topic	Uniform Distributed Queue	jms/jpa-cache-topic	Default Targeting	obdx_cluster

5.8.2 Subdeployment View

This topic provides information on **Subdeployment View**.

For more information on fields, refer to the field description table.

Table 5-35 Table 1

Sr No.	Name	Resources	Subdeployment
1	jpa-cache-sd		jpa-cache

5.9 Multiple Transaction Approval Functionality

- [Multiple Transaction Approval Functionality](#)
This topic provides information on **Multiple Transaction Approval Functionality**.
- [Subdeployment View](#)
This topic provides information on **Subdeployment View**.

5.9.1 Multiple Transaction Approval Functionality

This topic provides information on **Multiple Transaction Approval Functionality**.

Approval of any transactions from the pending-for-approval listing screen

For more information on fields, refer to the field description table.

Table 5-36 Table 1

Sr No.	Name	Type	JNDI Name	Subdeployments	Targest
1.	MultipleTransactionServiceInvocationQueue	Uniform Distributed Queue	MultipleTransactionServiceInvocationQueue	MultipleTransactionApprovalSD	MultipleTransactionApprovalJMS Server
2.	MultipleTransactionServiceInvocationQCF	Connection Factory	MultipleTransactionServiceInvocationQCF	MultipleTransactionApprovalSD	MultipleTransactionApprovalJMS Server
3.	MultipleTransactionServiceInvocationResponseQCF	Connection Factory	MultipleTransactionServiceInvocationResponseQCF	MultipleTransactionApprovalSD	MultipleTransactionApprovalJMS Server
4.	MultipleTransactionServiceInvocationResponseQueue	Uniform Distributed Queue	MultipleTransactionServiceInvocationResponseQueue	MultipleTransactionApprovalSD	MultipleTransactionApprovalJMS Server

5.9.2 Subdeployment View

This topic provides information on **Subdeployment View**.

For more information on fields, refer to the field description table.

Table 5-37 Table 1

Sr No.	Name	Resources	Subdeployment
1	MultipleTransactionApprovalSD	MultipleTransactionServiceInvocationResponseQueue, MultipleTransactionServiceInvocationQueue, MultipleTransactionServiceInvocationQCF, MultipleTransactionServiceInvocationResponseQCF	MultipleTransactionApprovalSD

5.10 NotificationServer Functionality

- [NotificationServer Functionality](#)
This topic provides information on **NotificationServer Functionality**.

5.10.1 NotificationServer Functionality

This topic provides information on **NotificationServer Functionality**.

This contains Queues/Topics which are consumed by Demand Deposit, Term Deposit, Loan, Insights, Config modules

1. Queues which listens to Host(UBS) queues and transfers messages to internal topics for various operation. This includes Account Access automapping, sending host alerts to customer, insights updates.
2. Queues which listens to any changes to dayone configuration and update the cache.

For more information on fields, refer to the field description table.

Table 5-38 Table 1

Sr No.	Name	Type	JNDI Name	Subdeployments	Target
1.	NotificationQCF	Connection Factory	NotificationQCF	Default Targeting	obdx_cluster
2.	NotificationTCF	Connection Factory	NotificationTCF	Default Targeting	obdx_cluster
3.	NOTIFICATION_QUEUE	Uniform Distributed Queue	NOTIFICATION_QUEUE	Default Targeting	obdx_cluster
4.	NOTIFICATION_TOPIC	Uniform Distributed Queue	NOTIFICATION_TOPIC	Default Targeting	obdx_cluster
5.	UBSNotificationTCF	Connection Factory	UBSNotificationTCF	Default Targeting	obdx_cluster
6.	UBS_NOTIFICATION_TOPIC	Uniform Distributed Topic	UBS_NOTIFICATION_TOPIC	Default Targeting	obdx_cluster

5.11 OBPMSysModule

- [OBPMSysModule](#)
This topic provides information on **OBPMSysModule**.
- [Subdeployment View](#)
This topic provides information on **Subdeployment View**.

5.11.1 OBPMSysModule

This topic provides information on **OBPMSysModule**.

For more information on fields, refer to the field description table.

Table 5-39 Table 1

Sr No.	Name	Type	JNDI Name	Subdeployments	Targest
1.	OBPMForeignServer	Foreign Server	N/A	OBPMSubdeploymen t	obdx_cluster

5.11.2 Subdeployment View

This topic provides information on **Subdeployment View**.

For more information on fields, refer to the field description table.

Table 5-40 Table 1

Sr No.	Name	Resources	Subdeployment
1	OBPMSubdeployment		obdx_cluster

5.12 Payment Functionality

- [Payment Functionality](#)
This topic provides information on **Payment Functionality**.
- [Subdeployment View](#)
This topic provides information on **Subdeployment View**.

5.12.1 Payment Functionality

This topic provides information on **Payment Functionality**.

For more information on fields, refer to the field description table.

Table 5-41 Table 1

Sr No.	Name	Type	JNDI Name	Subdeployments	Targest
1.	DMS_QUEUE_FOREIGN_SERVER	Foreign Server	N/A	PaymentSD	PaymentJMSServer

5.12.2 Subdeployment View

This topic provides information on **Subdeployment View**.

For more information on fields, refer to the field description table.

Table 5-42 Table 1

Sr No.	Name	Resources	Subdeployment
1	PaymentSD		PaymentJMSServer

5.13 Policies Functionality

- [Policies Functionality](#)
This topic provides information on **Policies Functionality**.
- [Subdeployment View](#)
This topic provides information on **Subdeployment View**.

5.13.1 Policies Functionality

This topic provides information on **Policies Functionality**.

PoliciesTopic is used to update RTM cache asynchronously after creating or updating role so that RTM changes get reflected on the fly without server restart.

For more information on fields, refer to the field description table.

Table 5-43 Table 1

Sr No.	Name	Type	JNDI Name	Subdeployments	Targest
1.	POLICIESQCF	Connection Factory	POLICIESQCF	Default Targeting	obdx_cluster
2.	PoliciesTopic	Uniform Distributed Queue	PoliciesTopic	Default Targeting	obdx_cluster

5.13.2 Subdeployment View

This topic provides information on **Subdeployment View**.

For more information on fields, refer to the field description table.

Table 5-44 Table 1

Sr No.	Name	Resources	Subdeployment
1	PoliciesSD		PoliciesJMS

5.14 Reports Functionality

- [Reports Functionality](#)
This topic provides information on **Reports Functionality**.
- [Subdeployment View](#)
This topic provides information on **Subdeployment View**.

5.14.1 Reports Functionality

This topic provides information on **Reports Functionality**.

This queues are used in Adhoc and schedules reports.

For more information on fields, refer to the field description table.

Table 5-45 Table 1

Sr No.	Name	Type	JNDI Name	Subdeployments	Targest
1.	REPORTADHOC	Uniform Distributed Queue	REPORTADHOC	Default Targeting	obdx_cluster
2.	REPORTSCHEDULED	Uniform Distributed Queue	REPORTSCHEDULED	Default Targeting	obdx_cluster
3.	ReportsQCF	Connection Factory	ReportsQCF	Default Targeting	obdx_cluster

5.14.2 Subdeployment View

This topic provides information on **Subdeployment View**.

For more information on fields, refer to the field description table.

Table 5-46 Table 1

Sr No.	Name	Resources	Subdeployment
1	PoliciesSD		PoliciesJMS

5.15 UBSSystemModule functionality

- [UBSSystemModule functionality](#)
This topic provides information on **UBSSystemModule functionality**.
- [Subdeployment View](#)
This topic provides information on **Subdeployment View**.

5.15.1 UBSSystemModule functionality

This topic provides information on **UBSSystemModule functionality**.

For more information on fields, refer to the field description table.

Table 5-47 Table 1

Sr No.	Name	Type	JNDI Name	Subdeployments	Targest
1.	UBSForeignServer	Foreign Server	N/A	UBSSubdeployment	obdx_cluster

5.15.2 Subdeployment View

This topic provides information on **Subdeployment View**.

For more information on fields, refer to the field description table.

Table 5-48 Table 1

Sr No.	Name	Resources	Subdeployment
1	UBSSubdeployment		obdx_cluster

5.16 UserGroupUser Functionality

- [UserGroupUser Functionality](#)
This topic provides information on **UserGroupUser Functionality**.
- [Subdeployment View](#)
This topic provides information on **Subdeployment View**.

5.16.1 UserGroupUser Functionality

This topic provides information on **UserGroupUser Functionality**.

For more information on fields, refer to the field description table.

Table 5-49 Table 1

Sr No.	Name	Type	JNDI Name	Subdeployments	Targest
1.	UserGroupUserQCF	Connection Factory	UserGroupUserQCF	Default Targeting	obdx_cluster
2.	UserGroupUserTopic	Topic	UserGroupUserTopic	UserGroupUserSD	UserGroupUserJMSServer

5.16.2 Subdeployment View

This topic provides information on **Subdeployment View**.

For more information on fields, refer to the field description table.

Table 5-50 Table 1

Sr No.	Name	Resources	Subdeployment
1	UserGroupUserSD	UserGroupUserTopic	UserGroupUserJMSServer

5.17 Party Movement Report Functionality

- [Party Movement Report Functionality](#)
This topic provides information on **Party Movement Report Functionality**.
- [Subdeployment View](#)
This topic provides information on **Subdeployment View**.

5.17.1 Party Movement Report Functionality

This topic provides information on **Party Movement Report Functionality**.

For more information on fields, refer to the field description table.

Table 5-51 Table 1

Sr No.	Name	Type	JNDI Name	Subdeployments	Targest
1.	PartyMovementReportQCF	Connection Factory	PartyMovementReportQCF	Default Targeting	obdx_cluster
2.	PartyMovementReportTopic	Uniform Distributed Topic	PartyMovementReportTopic	Default Targeting	obdx_cluster

Sr No.	Name	Type	JNDI Name	Subdeployments	Targest
1.	PartyMovementReportQCF	Connection Factory	PartyMovementReportQCF	Default Targeting	obdx_cluster
2.	PartyMovementReportTopic	Uniform Distributed Topic	PartyMovementReportTopic	Default Targeting	obdx_cluster

5.17.2 Subdeployment View

This topic provides information on **Subdeployment View**.

For more information on fields, refer to the field description table.

Table 5-52 Table 1

Sr No.	Name	Resources	Subdeployment
1	PartyMovementReportSD		PartyMovementReportJMS

Index

A

Access point functionality, [10](#)
Account Access for a particular bucket, [2](#)
Account Access in Bulk, [2](#)
Audit Functionality, [3](#)
Authentication Functionality, [4](#)

B

Background, [1](#)
Bulk CMS functionality, [7](#)
BULK CORPORATE LOAN PROCESSING AND APPROVAL, [7](#)
BULK Electronic Bill Payment Processing and Approval, [7](#)
BULK PAYMENT FUNCTIONALITY, [8](#)
BULK SCFCM FUNCTIONALITY, [8](#)

C

Configure additional properties for the new foreign server, [2](#)
Create a Connection Factory, [8](#)
Create a foreign Server, [2](#)
Create a JMS Module, [1](#), [5](#)
Create a JMS Queue, [10](#)
Create a JMS Server, [3](#)
Create a SubDeployment, [6](#)
Create foreign connection factories, [3](#)
Create foreign destinations, [4](#)

E

ExtSystemReceiver Functionality, [5](#)
ExtSystemSender Functionality, [6](#)

G

GCIF Onboarding Draft cancellation functionality, [15](#)
GCIF onboarding draft functionality, [11](#)
GCIF party functionality, [11](#)
GCIF processing party, [12](#)

GCIF profile creation and updation functionality, [12](#)
GCIF report mapping functionality at user level, [13](#)
GCIF Rule functionality, [13](#)
GCIF USER ACCESS functionality, [14](#)
GCIF User create and update functionality, [14](#)
GCIF USERGROUP functionality, [14](#)
GCIF workflow create functionality, [15](#)

I

Introduction and Definitions, [1](#)

J

jpa-cache Functionality, [16](#)

M

Multiple Transaction Approval Functionality, [17](#)

N

NotificationServer Functionality, [18](#)

O

Objective and Scope, [1](#)
OBPMSYSTEMModule, [19](#)
Onboarding Draft updation functionality, [10](#)

P

Party Movement Report Functionality, [23](#)
Payment Functionality, [19](#)
Policies Functionality, [20](#)

R

Regular Access Functionality, [1](#)
Report mapping functionality at GCIF level, [11](#)
Reports Functionality, [21](#)

S

Sample creation of Connection Factory, [3](#)
Sample creation of Queue, [1](#)
Sample Creation of Topic, [6](#)
Subdeployment View, [2–6](#), [8](#), [16](#), [17](#), [19–23](#)

U

UBSSystemModule functionality, [22](#)
UserGroupUser Functionality, [22](#)