

Oracle® Banking Corporate Lending Installer Prerequisite



Release 14.8.0.0.0
G29775-01
April 2025

ORACLE®

Oracle Banking Corporate Lending Installer Prerequisite, Release 14.8.0.0.0

G29775-01

Copyright © 2016, 2025, Oracle and/or its affiliates.

This software and related documentation are provided under a license agreement containing restrictions on use and disclosure and are protected by intellectual property laws. Except as expressly permitted in your license agreement or allowed by law, you may not use, copy, reproduce, translate, broadcast, modify, license, transmit, distribute, exhibit, perform, publish, or display any part, in any form, or by any means. Reverse engineering, disassembly, or decompilation of this software, unless required by law for interoperability, is prohibited.

The information contained herein is subject to change without notice and is not warranted to be error-free. If you find any errors, please report them to us in writing.

If this is software, software documentation, data (as defined in the Federal Acquisition Regulation), or related documentation that is delivered to the U.S. Government or anyone licensing it on behalf of the U.S. Government, then the following notice is applicable:

U.S. GOVERNMENT END USERS: Oracle programs (including any operating system, integrated software, any programs embedded, installed, or activated on delivered hardware, and modifications of such programs) and Oracle computer documentation or other Oracle data delivered to or accessed by U.S. Government end users are "commercial computer software," "commercial computer software documentation," or "limited rights data" pursuant to the applicable Federal Acquisition Regulation and agency-specific supplemental regulations. As such, the use, reproduction, duplication, release, display, disclosure, modification, preparation of derivative works, and/or adaptation of i) Oracle programs (including any operating system, integrated software, any programs embedded, installed, or activated on delivered hardware, and modifications of such programs), ii) Oracle computer documentation and/or iii) other Oracle data, is subject to the rights and limitations specified in the license contained in the applicable contract. The terms governing the U.S. Government's use of Oracle cloud services are defined by the applicable contract for such services. No other rights are granted to the U.S. Government.

This software or hardware is developed for general use in a variety of information management applications. It is not developed or intended for use in any inherently dangerous applications, including applications that may create a risk of personal injury. If you use this software or hardware in dangerous applications, then you shall be responsible to take all appropriate fail-safe, backup, redundancy, and other measures to ensure its safe use. Oracle Corporation and its affiliates disclaim any liability for any damages caused by use of this software or hardware in dangerous applications.

Oracle®, Java, MySQL, and NetSuite are registered trademarks of Oracle and/or its affiliates. Other names may be trademarks of their respective owners.

Intel and Intel Inside are trademarks or registered trademarks of Intel Corporation. All SPARC trademarks are used under license and are trademarks or registered trademarks of SPARC International, Inc. AMD, Epyc, and the AMD logo are trademarks or registered trademarks of Advanced Micro Devices. UNIX is a registered trademark of The Open Group.

This software or hardware and documentation may provide access to or information about content, products, and services from third parties. Oracle Corporation and its affiliates are not responsible for and expressly disclaim all warranties of any kind with respect to third-party content, products, and services unless otherwise set forth in an applicable agreement between you and Oracle. Oracle Corporation and its affiliates will not be responsible for any loss, costs, or damages incurred due to your access to or use of third-party content, products, or services, except as set forth in an applicable agreement between you and Oracle.

Contents

Preface

Purpose	iv
Audience	iv
Documentation Accessibility	iv
Critical Patches	v
Diversity and Inclusion	v
Related Resources	v
Conventions	v
Screenshot Disclaimer	vi
Acronyms and Abbreviations	vi

1 Installer Prerequisite Setup

1.1 Source Structure	1-1
1.2 Environment Setup Steps	1-3
1.3 Environment Property File Configuration	1-6

2 Configure TNS_ADMIN

Preface

This topic contains following sub-topics:

- [Purpose](#)
- [Audience](#)
- [Documentation Accessibility](#)
- [Critical Patches](#)
- [Diversity and Inclusion](#)
- [Related Resources](#)
- [Conventions](#)
- [Screenshot Disclaimer](#)
- [Acronyms and Abbreviations](#)

Purpose

This manual is designed to help acquaint you with the installation of Oracle Banking Corporate Lending. This guide helps the user with the installation of Oracle Banking Application.

The images used in the documentation are of illustration purpose and need to be used only for reference.

Audience

This manual is intended for the following User/User Roles:

Table 1 Audience

Role	Function
Implementation team	Implementation of Oracle Banking Corporate Lending Solution
Presales team	Install Oracle Banking Corporate Lending for demo purpose
Bank personnel	Who installs Oracle Banking Corporate Lending

The user of this manual is expected to have basic understanding of Application server like Oracle Weblogic, IBM Websphere and Oracle Database.

Documentation Accessibility

For information about Oracle's commitment to accessibility, visit the Oracle Accessibility Program website at <http://www.oracle.com/pls/topic/lookup?ctx=acc&id=docacc>.

Access to Oracle Support

Oracle customer access to and use of Oracle support services will be pursuant to the terms and conditions specified in their Oracle order for the applicable services.

Critical Patches

Oracle advises customers to get all their security vulnerability information from the Oracle Critical Patch Update Advisory, which is available at [Critical Patches, Security Alerts and Bulletins](#). All critical patches should be applied in a timely manner to make sure effective security, as strongly recommended by [Oracle Software Security Assurance](#).

Diversity and Inclusion

Oracle is fully committed to diversity and inclusion. Oracle respects and values having a diverse workforce that increases thought leadership and innovation. As part of our initiative to build a more inclusive culture that positively impacts our employees, customers, and partners, we are working to remove insensitive terms from our products and documentation. We are also mindful of the necessity to maintain compatibility with our customers' existing technologies and the need to ensure continuity of service as Oracle's offerings and industry standards evolve. Because of these technical constraints, our effort to remove insensitive terms is ongoing and will take time and external cooperation.

Related Resources

For more information on any related features, refer to the following documents:

- *Release Notes*
- *Installation Guides*
- *Property File Creation Guide*
- *DB Setup Guide*
- *Installer EAR Building Guide*

Conventions

The following text conventions are used in this document:

Table 2 Conventions and Meaning

Convention	Meaning
boldface	Boldface type indicates graphical user interface elements associated with an action, or terms defined in text or the glossary.
<i>italic</i>	Italic type indicates book titles, emphasis, or placeholder variables for which you supply particular values.
<code>monospace</code>	Monospace type indicates commands within a paragraph, URLs, code in examples, text that appears on the screen, or text that you enter.

Screenshot Disclaimer

Personal information used in the interface or documents is dummy and does not exist in the real world. It is only for reference purposes.

Acronyms and Abbreviations

The list of the acronyms and abbreviations used in this guide are as follows:

Table 3 Acronyms and Abbreviations

Abbreviation	Description
FCUBS	Oracle FLEXCUBE Universal banking Solutions
ELCM	Oracle Banking Enterprise Limits and Collateral Management
EAR	Enterprise Archive file
LDAP	Lightweight Directory Access Protocol
OBCL	Oracle Banking Corporate Lending
ROFC	Rest Of FLEXCUBE

1

Installer Prerequisite Setup

This topic explains the systematic instructions on how the Installer is designed.

Install the 12C Client and JAVA latest version.

If the target database is Autonomous Database, TNS_ADMIN must be configured. Refer to the topic Configure TNS Admin for detailed steps to configure TNS_ADMIN.

1. During the setup of the environment, two installer modes are to be used:
 - a. GUI Installer
 - b. Silent Installer
 2. The **GUI Installer** is located under \INSTALLER\SOFT\GUI. The GUI installer is required for the below activities
 - a. Property File Creation
 - b. Basic Setup
 - c. Environment Property File Configuration
 3. The **Silent installer** is located under \INSTALLER\SOFT. The Silent installer is required for below activities,
 - a. Database Setup
 - b. EAR Build
- [Source Structure](#)
This topic explains the different ways of installation and the source structure.
 - [Environment Setup Steps](#)
This topic explains the systematic instructions to setup the environment.
 - [Environment Property File Configuration](#)
This topic explains the Environment Property File Configuration.

1.1 Source Structure

This topic explains the different ways of installation and the source structure.

The installation can be done in different ways, and Source Structure should be maintained as below:

Table 1-1 Source Structure

Source Structure	Description
ROFC without OBCL	The ROFC_OSDC.zip can be used without any modifications.

Table 1-1 (Cont.) Source Structure

Source Structure	Description
ROFC with OBCL	<p>The OBCL folder from OBCL_OSDC.zip should be copied parallel to the INFRA folder of ROFC_OSDC.zip. In addition, copy the following class folders from \INFRA of OBCL_OSDC.zip file to ROFC_OSDC extracted sources \INFRA folder.</p> <p>In addition, copy the following class folders from \ADAPTERS\FCEXternal of OBCL_OSDC.zip file to ROFC_OSDC extracted sources \ADAPTERS\FCEXternal folder.</p> <ol style="list-style-type: none"> 1. PIApps 2. PICommon 3. PIDto 4. PIEJB 5. PIEntities 6. PIKernel 7. PIKernelDao 8. PIUtility 9. COCommon 10. CODto 11. COEJB 12. COEntities 13. COKernel 14. COKernelDao 15. COUtility
ROFC with ELCM	<p>The ELCM and POJO folders from ELCM_OSDC.zip should be copied parallel to the INFRA folder of ROFC_OSDC.zip. In addition, copy the following class folders from \INFRA of ELCM_OSDC.zip file to ROFC_OSDC extracted sources \INFRA folder.</p> <ol style="list-style-type: none"> 1. ELCMCommon 2. ELCMDto 3. ELCMEJB 4. ELCMEntities 5. ELCMGateway 6. ELCMKernel 7. ELCMKernelJpa 8. ELCMUtility 9. ELCMWeb
ROFC without ELCM	The ROFC_OSDC.zip can be used without any modifications.
OBCL without ELCM	The OBCL_OSDC.zip can be used without any modifications.

Table 1-1 (Cont.) Source Structure

Source Structure	Description
OBCL with ELCM	The ELCM and POJO folders from ELCM_OSDC.zip should be copied parallel to the INFRA folder of OBCL_OSDC.zip . In addition, copy the following class folders from \INFRA of ELCM_OSDC.zip file to ROFC_OSDC extracted sources \INFRA folder. <ol style="list-style-type: none">1. ELCMCommon2. ELCMDto3. ELCMEJB4. ELCMEntities5. ELCMGateway6. ELCMKernel7. ELCMKernelJpa8. ELCMUtility9. ELCMWeb
ELCM	The ELCM_OSDC.zip can be used without any modifications.
PM	The PM_OSDC.zip can be used without any modifications.
CO-DEPLOY	The OBCL folder from OBCL_OSDC.zip and PM folder from PM_OSDC.zip should be copied parallel to the INFRA folder of ROFC_OSDC.zip .

1.2 Environment Setup Steps

This topic explains the systematic instructions to setup the environment.

To setup the environment, refer to the below Environment setup table.

Table 1-2 Environment Setup

Environment Setup	Description
Property File Creation	Two property files are generated: <ul style="list-style-type: none">• "fcubs.properties" required for application (EAR).• "env.properties" common property required for environment setup. For more information, refer to <i>Property File Creation Guide</i>
Populating environment property file	The Database properties are to be populated from the "env.properties" generated during property file creation. The rest of the properties are to be manually updated.
NLS LANG settings	Before moving to the DB setup, the NLS_LANG parameter has to be added to the local system environment variables.

Table 1-2 (Cont.) Environment Setup

Environment Setup	Description
For Windows	<ol style="list-style-type: none">1. This can be done by browsing to My Computer\Properties\Advanced system settings\Environment Variables or Control Panel\All Control Panel Items\System\Advanced system settings\Environment Variables. Here, the NLS_LANG parameter can be added with variable name as NLS_LANG and value as AMERICAN_AMERICA.UTF8. Refer to System Property screen.2. After this, go to Run(shortcut: Windows+R), enter regedit, and click OK. It will open Registry Editor. Here, under Oracle DB KEY, the NLS_LANG parameter can be added with variable name as NLS_LANG and value as AMERICAN_AMERICA.UTF8 as shown in the Registry Editor screen.3. After this, please do a System Restart(Shutdown->Restart) to reflect the changes.
For Linux	<p>This can be done by opening a command bash shell and by setting environment variables in the command prompt <code>export NLS_LANG=AMERICAN_AMERICA.UTF8</code>.</p> <p>By running the above command in the installer, the location will set the environment variable in the linux shell/terminal.</p>
Database Setup	<p>The Database setup involves DDL Load, Object Compilation and Static Data Compilation.</p> <p>For more information, refer to <i>DB Setup Guide</i></p>
Basic Setup	<p>Post INC Load, basic setup has to be done. The Basic setup is done using the GUI Installer.</p> <p>For more information, refer to <i>DB Setup Guide</i></p>
Application EAR build	<p>The FCUBS Application and Gateway EAR build is done using the Silent Installer.</p> <p>For more information, refer to <i>EAR Building Guide</i></p>

Figure 1-1 System Properties

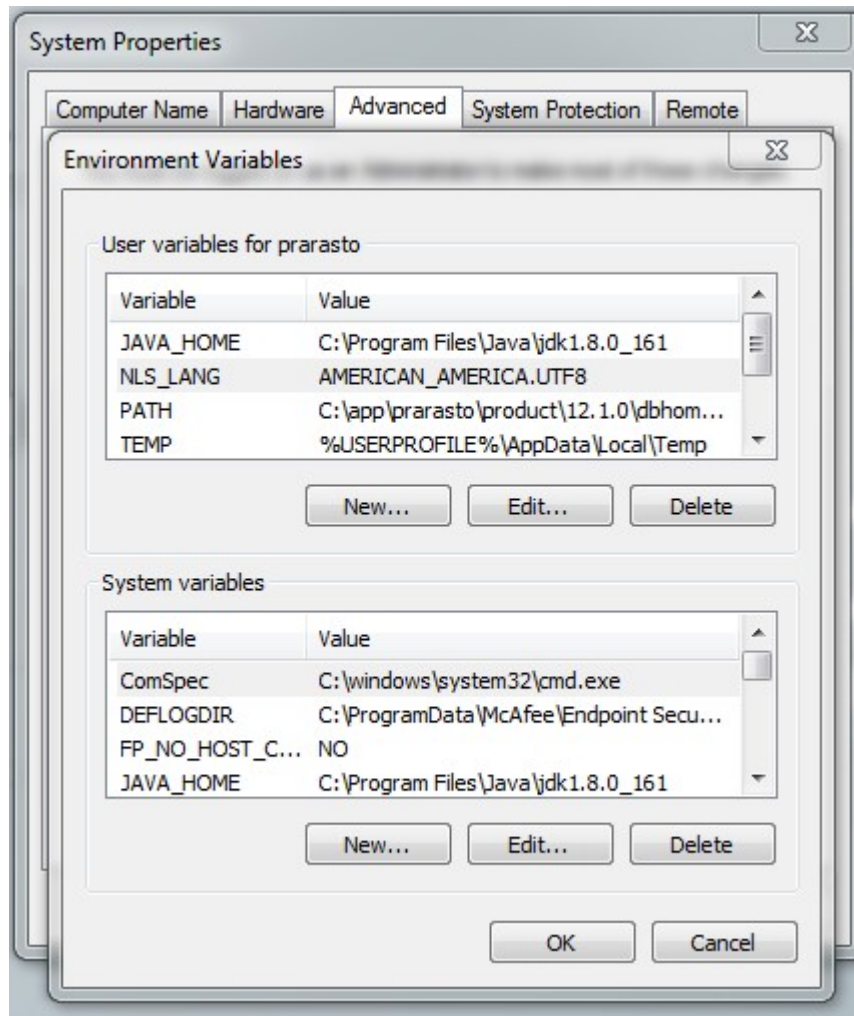
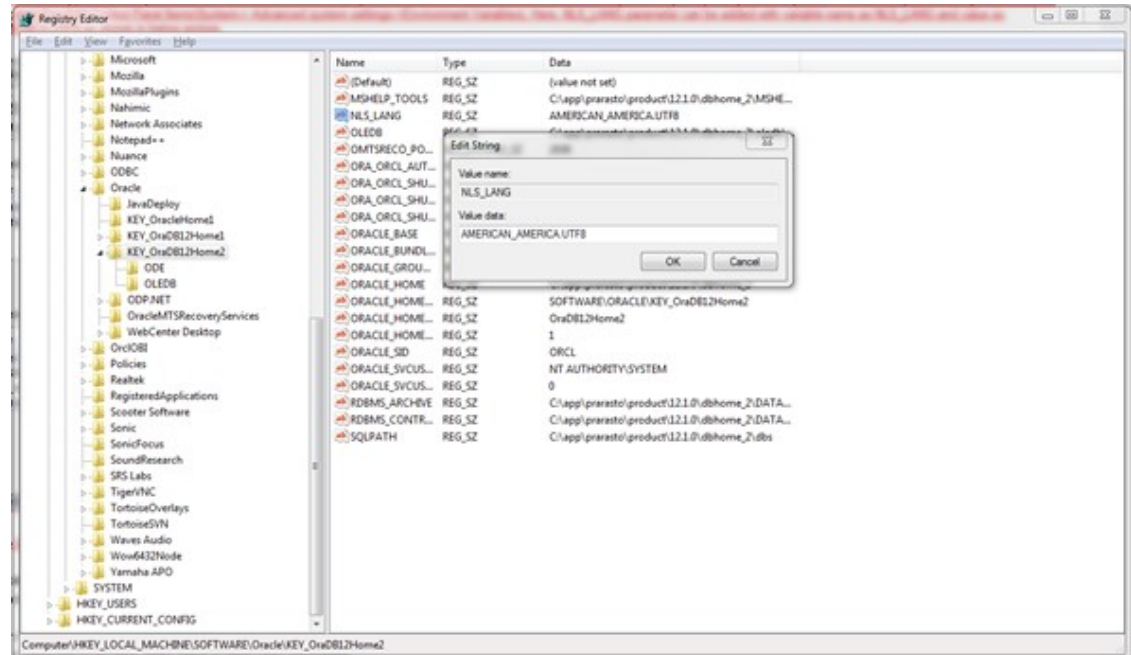


Figure 1-2 Registry Editor



1.3 Environment Property File Configuration

This topic explains the Environment Property File Configuration.

Figure 1-3 Environment Property File

```
#Mon May 07 14:01:30 IST 2018
GW_PROPERTIES_PATH=D:/14.1/INSTALLER/Console_EXEC_24apr/Console_EXEC/INSTALLER/SOFT/logs/GW_WS_Prop.properties
HOST_SMS=2/8gbcFjgT1Ki1SYgRiG9anIz13s66mDaAL9CF3Rt8I=
SYMMETRIC_KEY=oraclefinancialsolutions
ENTITY_ID2=ENTITY_ID2
ENTITY_ID1=ENTITY_ID1
PORT_SMS=1521
RECENT_BROWSE_LOCATION=C:/Users/piyushsh/Desktop/multi/fcubs.properties
CONTEXT_NAME=FCJNeoWeb
PASSWORD_SMS=AkAj+fQixVvKdpHUeRMVcQ==
SOURCE_PATH=D:/14.1/INSTALLER/Console_EXEC_24apr/Console_EXEC
SCHEMA_NAME_ENTITY_ID2=VIZoPhrT9eG7FbuqqN/EYQ==
SCHEMA_NAME_ENTITY_ID1=Gz2Vv1vp7T4XbStsj1DKwv==
EXTERNAL_PROPERTY_PATH_REQUIRED=N
WEBLOGIC_HOME=C:/Oracle/Middleware/Oracle_Home/wlserver
SCHEMA_NAME_SMS=AkAj+fQixVvKdpHUeRMVcQ==
PASSWORD_ENTITY_ID2=VIZoPhrT9eG7FbuqqN/EYQ==
COMPILE_IN_ALL_ENTITIES=Y
PASSWORD_ENTITY_ID1=Gz2Vv1vp7T4XbStsj1DKwv==
APPLICATION_TYPE=FCUBS
EXTERNAL_PROPERTY_PATH=
DECENTRALIZED=N
EAR_NAME=FCUBSMULT
EXTERNAL_JSUXML_PATH=
EAR_DESTINATION_PATH=D:/14.1/INSTALLER/multi
ENTITY_NOS=2
DECENTRALIZED_FCUBS_PROPERTIES_PATH=
CONNECTING_STRING_ENTITY_ID2=FC141INTESTPDB
CONNECTING_STRING_ENTITY_ID1=FC141INTESTPDB
HOST_ENTITY_ID2=2/8gbcFjgT1Ki1SYgRiG9anIz13s66mDaAL9CF3Rt8I=
SERVICE_NAME_ENTITY_ID2=YtfaW53ngv1Tcgyh3fg2PA==
HOST_ENTITY_ID1=2/8gbcFjgT1Ki1SYgRiG9anIz13s66mDaAL9CF3Rt8I=
ConfigPath=D:/14.1/INSTALLER/Console_EXEC_24apr/Console_EXEC/INSTALLER/SOFT/config/Application
SERVICE_NAME_ENTITY_ID1=YtfaW53ngv1Tcgyh3fg2PA==
PATCHSET_INSTALLATION=N
FCUBS_PROPERTIES_PATH=D:/14.1/INSTALLER/multi/fcubs.properties
ORACLE_HOME=C:/app/client/piyushsh/product/12.2.0/client_1
APPSERVER_HOME=C:/Oracle/Middleware/Oracle_Home/wlserver
CONNECTING_STRING_SMS=FC141INTESTPDB
JAVA_HOME=C:/Program Files/Java/jdk1.8.0_151
PORT_ENTITY_ID2=1521
PORT_ENTITY_ID1=1521
SERVICE_NAME_SMS=YtfaW53ngv1Tcgyh3fg2PA==
EXTERNAL_JSUXML_REQUIRED=N
```

**Note:**

A single property file will be used for both DB Compilation and EAR build. Hence all the properties will be located in a single property file. Some properties may not be applicable during a certain setup, and those should not be modified (should be left with default values).

Refer the table, to view the properties available in the Environment Property File.

Table 1-3 Environment Property File

Properties	Description
Config Path	Absolute path to the folder containing the config files are to be provided. This is located under \INSTALLER\SOFT\config\Application
Java_Home	Provide the home folder path of JDK 1.8.
Oracle_Home	Provide the home folder path of Oracle Client or Database.
Varedited	This property should not be changed. This is an internal property required by the installer to identify if any changes are required in env.properties.
Source and Destination Path	Specify the destination directory. Here the destination path should be the same as the source file path.
FCUBS_PROPERTIES_PATH	Path where the fcubs property file is located .
GW_PROPERTIES_PATH	Provide the Gateways Properties Path.
APPLICATION_TYPE	Application Type is maintained as per the Application Name selected in the GUI Installer.
EXTERNAL_PROPERTY_PATH	If this is selected during installation, the corresponding path will be displayed here, and the value of the parameter EXTERNAL PROPERTY FILE REQUIRED will be 'Y.'
EXTERNAL_JSUIXML_PATH	If this is selected during installation, the corresponding path will be displayed here, and the value of the parameter EXTERNAL JSUIXML REQUIRED will be 'Y'.
EAR_NAME	Specify a name for the Application to be created.
EAR_DESTINATION_PATH	This is the local path where the built EAR will be saved. This gets updated automatically as per the path provided during the installation process.
CONTEXT_NAME	Specify a name for the Application Context.
FCHome	Provide the FCHome Path. This will be the source path for DB setup/EAR build.
USER_NAME	Give the Schema Name.
PASSWORD	Here Password should be encrypted. As Schema details provided by the GUI Installer, the env.properties file generates with the encrypted Password.
Schema	Give the Instance Name. Note: The path is maintained with '\\' as it is maintained only for WINDOWS. \' slash will consider as an escape character, so \'\' slash is given in windows.

On the launch of GUI Installer for creating the property file, the env properties file gets generated, which is present in \INSTALLER\SOFT\GUI\logs path will be copied to \INSTALLER\SOFT\logs path. This method is followed for EAR creation, and Back-end build as it is done by the Silent Installer.

If OBCL needs to install as Co-deployed along with ROFC, then the OBCL folder from **OBCL_OSDC.zip** should be placed parallel to the ROFC folder in the **ROFC_OSDC.zip**.

If ELCM needs to install as Co-deployed along with ROFC, then the ELCM folder from **ELCM_OSDC.zip** should be placed parallel to the ROFC folder in the **ROFC_OSDC.zip**. INFRA inside ELCM should be moved and merged with CORE INFRA.

If PAYMENTS needs to install as Co-deployed along with ROFC, then the PAYMENTS folder from the PAYMENTS OSDC zip should be placed parallel to the ROFC folder in the **ROFC_OSDC.zip**.

INFRA inside PAYMENTS should be moved and merged with CORE INFRA.

2

Configure TNS_ADMIN

This topic explains the systematic instructions to configure TNS_ADMIN.

Oracle Database/Instant Client has to be installed and presented in the Windows or Linux Machine where this setup is being done.

1. Create a new folder called TNS_ADMIN in Oracle Database/Instant Client Home path.
File Path screen displays.
2. Extract the Autonomous Database wallet inside the TNS_ADMIN folder.
Extracted files screen is displayed.
3. Edit the **sqlnet.ora** file and update the DIRECTORY path in the sqlnet.ora with the TNS_ADMIN folder path. Make sure to use \\ as the folder/directory separator in the path value.
4. Go to the **Edit the System Environment Variable** option in a machine and press New in the System Variables.
5. Enter the value for the Variable name as **TNS_ADMIN** and Variable value as **TNS_ADMIN** path and press **OK**.