

Oracle® Banking Corporate Lending Installer Database Setup



Release 14.8.0.0.0
G29781-01
April 2025

ORACLE®

Copyright © 2007, 2025, Oracle and/or its affiliates.

This software and related documentation are provided under a license agreement containing restrictions on use and disclosure and are protected by intellectual property laws. Except as expressly permitted in your license agreement or allowed by law, you may not use, copy, reproduce, translate, broadcast, modify, license, transmit, distribute, exhibit, perform, publish, or display any part, in any form, or by any means. Reverse engineering, disassembly, or decompilation of this software, unless required by law for interoperability, is prohibited.

The information contained herein is subject to change without notice and is not warranted to be error-free. If you find any errors, please report them to us in writing.

If this is software, software documentation, data (as defined in the Federal Acquisition Regulation), or related documentation that is delivered to the U.S. Government or anyone licensing it on behalf of the U.S. Government, then the following notice is applicable:

U.S. GOVERNMENT END USERS: Oracle programs (including any operating system, integrated software, any programs embedded, installed, or activated on delivered hardware, and modifications of such programs) and Oracle computer documentation or other Oracle data delivered to or accessed by U.S. Government end users are "commercial computer software," "commercial computer software documentation," or "limited rights data" pursuant to the applicable Federal Acquisition Regulation and agency-specific supplemental regulations. As such, the use, reproduction, duplication, release, display, disclosure, modification, preparation of derivative works, and/or adaptation of i) Oracle programs (including any operating system, integrated software, any programs embedded, installed, or activated on delivered hardware, and modifications of such programs), ii) Oracle computer documentation and/or iii) other Oracle data, is subject to the rights and limitations specified in the license contained in the applicable contract. The terms governing the U.S. Government's use of Oracle cloud services are defined by the applicable contract for such services. No other rights are granted to the U.S. Government.

This software or hardware is developed for general use in a variety of information management applications. It is not developed or intended for use in any inherently dangerous applications, including applications that may create a risk of personal injury. If you use this software or hardware in dangerous applications, then you shall be responsible to take all appropriate fail-safe, backup, redundancy, and other measures to ensure its safe use. Oracle Corporation and its affiliates disclaim any liability for any damages caused by use of this software or hardware in dangerous applications.

Oracle®, Java, MySQL, and NetSuite are registered trademarks of Oracle and/or its affiliates. Other names may be trademarks of their respective owners.

Intel and Intel Inside are trademarks or registered trademarks of Intel Corporation. All SPARC trademarks are used under license and are trademarks or registered trademarks of SPARC International, Inc. AMD, Epyc, and the AMD logo are trademarks or registered trademarks of Advanced Micro Devices. UNIX is a registered trademark of The Open Group.

This software or hardware and documentation may provide access to or information about content, products, and services from third parties. Oracle Corporation and its affiliates are not responsible for and expressly disclaim all warranties of any kind with respect to third-party content, products, and services unless otherwise set forth in an applicable agreement between you and Oracle. Oracle Corporation and its affiliates will not be responsible for any loss, costs, or damages incurred due to your access to or use of third-party content, products, or services, except as set forth in an applicable agreement between you and Oracle.

Contents

Preface

Purpose	iv
Audience	iv
Documentation Accessibility	iv
Critical Patches	v
Diversity and Inclusion	v
Related Resources	v
Conventions	v
Screenshot Disclaimer	v
Acronyms and Abbreviations	vi

1 Install Oracle Banking Corporate Lending Database

1.1	Prerequisites	1-1
1.2	Create Schema by Importing Full Dump	1-1
1.3	Create Schema from Shipment Media	1-2
1.3.1	Backend Setup using Silent Installer	1-2
1.3.1.1	Invalid Recompilation script	1-3
1.3.2	Basic Setup Using GUI Installer	1-3
1.4	Compilation of ADF files	1-13

Preface

This topic contains the following sub-topics:

- [Purpose](#)
- [Audience](#)
- [Documentation Accessibility](#)
- [Critical Patches](#)
- [Diversity and Inclusion](#)
- [Related Resources](#)
- [Conventions](#)
- [Screenshot Disclaimer](#)
- [Acronyms and Abbreviations](#)

Purpose

This guide helps the user to configure the Oracle Banking Corporate Lending database. This guide helps the user with the installation of Oracle Banking Application.

Audience

This manual is intended for the following User/User Roles:

Table 1 Audience

Role	Function
Administrator	Who controls the system and application parameters and ensures smooth functionality and flexibility of the banking application.
Implementation team	Implementation of Oracle Banking Corporate Lending Solution
Pre-sales team	Install Oracle Banking Corporate Lending for demo purpose
Bank personnel	Who installs Oracle Banking Corporate Lending

The user of this manual is expected to have basic understanding of Oracle Banking Application installation.

Documentation Accessibility

For information about Oracle's commitment to accessibility, visit the Oracle Accessibility Program website at <https://www.oracle.com/corporate/accessibility/>.

Access to Oracle Support

Oracle customer access to and use of Oracle support services will be pursuant to the terms and conditions specified in their Oracle order for the applicable services.

Critical Patches

Oracle advises customers to get all their security vulnerability information from the Oracle Critical Patch Update Advisory, which is available at [Critical Patches, Security Alerts and Bulletins](#). All critical patches should be applied in a timely manner to ensure effective security, as strongly recommended by [Oracle Software Security Assurance](#).

Diversity and Inclusion

Oracle is fully committed to diversity and inclusion. Oracle respects and values having a diverse workforce that increases thought leadership and innovation. As part of our initiative to build a more inclusive culture that positively impacts our employees, customers, and partners, we are working to remove insensitive terms from our products and documentation. We are also mindful of the necessity to maintain compatibility with our customers' existing technologies and the need to ensure continuity of service as Oracle's offerings and industry standards evolve. Because of these technical constraints, our effort to remove insensitive terms is ongoing and will take time and external cooperation.

Related Resources

For more information on any related features, refer to the following documents:

- Oracle Banking Corporate Lending User Guides.
- Oracle Banking Corporate Lending Installation Guides.

Conventions

The following text conventions are used in this document:

Table 2 Conventions

Convention	Meaning
boldface	Boldface type indicates graphical user interface elements associated with an action, or terms defined in text or the glossary.
<i>italic</i>	Italic type indicates book titles, emphasis, or placeholder variables for which you supply particular values.
<code>monospace</code>	Monospace type indicates commands within a paragraph, URLs, code in examples, text that appears on the screen, or text that you enter.

Screenshot Disclaimer

Personal information used in the interface or documents is dummy and does not exist in the real world. It is only for reference purposes.

Acronyms and Abbreviations

The acronyms and abbreviations are listed in this below table:

Table 3 Acronyms and Abbreviations

Acronyms and Abbreviations	Definition
ADF	Application Development Framework
BPEL	Business Process Execution Language
BPMN	Business Process Model and Notation
GUI	Graphical User Interface
IP	Internet Protocol
JNDI	Java Naming and Directory Interface
LDAP	Lightweight Directory Access Protocol
TNS	Transaction Network Services

1

Install Oracle Banking Corporate Lending Database

Oracle Banking Corporate Lending database can be installed in one of the following methods.

Table 1-1 Oracle Banking Corporate Lending Database Installation

Method	Description
Import full dump	Import the Oracle Banking Corporate Lending objects into an empty schema using full dump. This is a manual activity.
From shipment media	Load the shipment media objects into an empty schema using Installer.

These methods are discussed in detail in the following topics.

This topic contains the following sub-topics:

- [Prerequisites](#)
This topic explains prerequisite steps for the Oracle Banking Corporate Lending Database installation.
- [Create Schema by Importing Full Dump](#)
This topic explains to create schema to import Full Dump manually.
- [Create Schema from Shipment Media](#)
In this method, you must create the schema from the shipment media.
- [Compilation of ADF files](#)
This topic describes about Compilation of ADF files.

1.1 Prerequisites

This topic explains prerequisite steps for the Oracle Banking Corporate Lending Database installation.

Below Privilege must be provided to the Database Schema from SYS Database User. These grants should be provided after schema creation and before the Installation.

1. ALTER USER ENABLE EDITIONS [FORCE];
2. GRANT CREATE ANY EDITION TO <SCHEMA NAME>
3. GRANT DROP ANY EDITION TO <SCHEMA NAME>
4. GRANT ALTER SESSION TO <SCHEMA NAME>
5. GRANT EXECUTE on DBMS_SESSION TO <SCHEMA NAME>

1.2 Create Schema by Importing Full Dump

This topic explains to create schema to import Full Dump manually.

In this method, manually import the Oracle Banking Corporate Lending DMP file into the Oracle Banking Corporate Lending schema. This can be done using the following command:

```
$impdp user_name/password directory=dir_name dumpfile=dmp_file_name.dmp  
logfile=dmp_file_name.log remap_schema=from_schema_name:to_schema_name  
remap_tablespace=from_tablespace_name:to_tablespace_name transform=OID:n
```

1.3 Create Schema from Shipment Media

In this method, you must create the schema from the shipment media.

This topic contains the following sub-topics:

- [Backend Setup using Silent Installer](#)
This topic explains about backend setup using silent installer.
- [Basic Setup Using GUI Installer](#)
This topic explains the systematic instructions about basic setup using the GUI installer.

1.3.1 Backend Setup using Silent Installer

This topic explains about backend setup using silent installer.

Backend Setup should be done using Silent Installer. DDL Compilation, Object Compilation, and Static Data Load will be managed as part of Backend Setup.

Before loading objects into the schema, **fcubs.properties** file creation must be performed with the required database details using the GUI installer (Refer to the Oracle Banking Corporate Lending Installer Property File Creation guide). After the property file is created, the **env.properties** file, present in `INSTALLER/SOFT/GUI/logs/` directory, will be automatically updated, with the details provided while creating the property file.

The **env.properties** file present in `INSTALLER/SOFT/GUI/logs/` will be automatically copied to `INSTALLER/SOFT/logs/` directory as part of property file creation. Details from this **env.properties** are taken for further steps.

Run the <Product Processor> **DBCompileRun.bat** from the `INSTALLER/SOFT` directory. DDL Compilation, Object Compilation, and Static Data load will be done.

For Example: ROFC INSTALLATION

First load SMS objects first and then ROFC objects. i.e.

1. Run **SMSDBCompileRun.bat** in Windows (**SMSDBCompileRun.sh** in Linux).

Note:

Before running DB Compilation of any sort, make sure that System Date Time format and language are provided as English, or otherwise DB Compilation might fail due to improper log names.

2. After SMS object loading is completed, then initiate ROFC compilationRun **ROFCDBCompileRun.bat** in windows (**ROFCDBCompileRun.sh** in Linux).

<Product Processor> **DBCompileRun.bat** – **PMDBCompileRun.bat** (**PMDBCompileRun.sh**) for Payments, **ROFCDBCompileRun.bat** (**ROFCDBCompileRun.sh**) for ROFC, **POJOLoadRun.bat** (**POJOLoadRun.sh**) for POJO Compilation and so on.

Check for the Invalid Count and make sure that the Invalid count is '0'. Run Invalid Recompilation script ([Invalid Recompilation script](#)), if required.

Provide the number of threads and schema name as input while running the script.

For Cluster: As part of the FCUBS_14.0.0.0.1 patch set, Mexico Localization changes are released in cluster mode. So from FCUBS_14.0.0.0.1 patch onwards, if any site wants to consume these changes, it needs to run the **ROFCDBCompileClusterRun.bat** in Windows (**ROFCDBCompileClusterRun.sh** in Linux).

This is for KERNEL as well as cluster objects in the DB schema.

Similarly, FCUBS_14.3.0.2.0 patch set onwards, if any site wants to consume Italy Cluster changes, then they need to run the **ROFCDBCompileClusterRun.bat** in Windows (**ROFCDBCompileClusterRun.sh** in Linux).

This topic contains the following sub-topic:

- [Invalid Recompilation script](#)
The script will help the users to check for the invalid count.

1.3.1.1 Invalid Recompilation script

The script will help the users to check for the invalid count.

Purpose

Check the invalid count.

Syntax

```
EXEC UTL_RECOMP.recomp_parallel(&THREADS,&SCHEMA');
```

1.3.2 Basic Setup Using GUI Installer

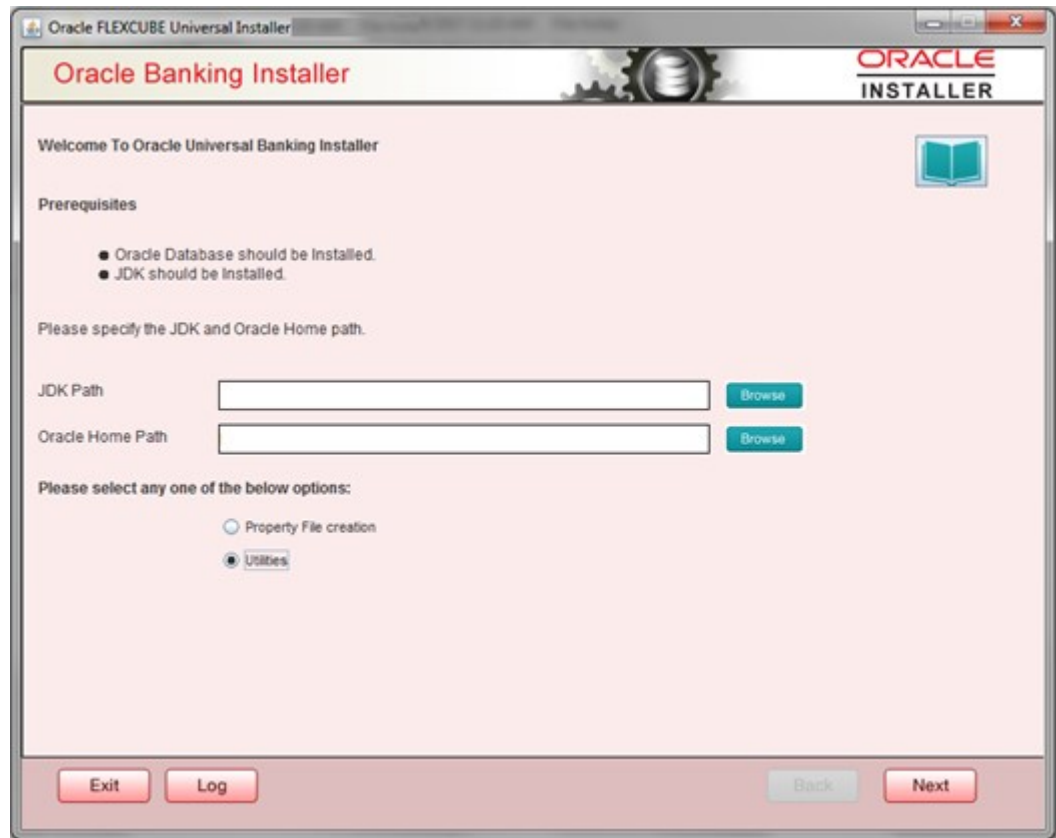
This topic explains the systematic instructions about basic setup using the GUI installer.

The steps to load objects from the shipment media are given below:

1. Double-click the **FCUBSInstaller.bat** batch file to launch Oracle Universal Banking Installer. Select the Utilities option and click the **Next** button.

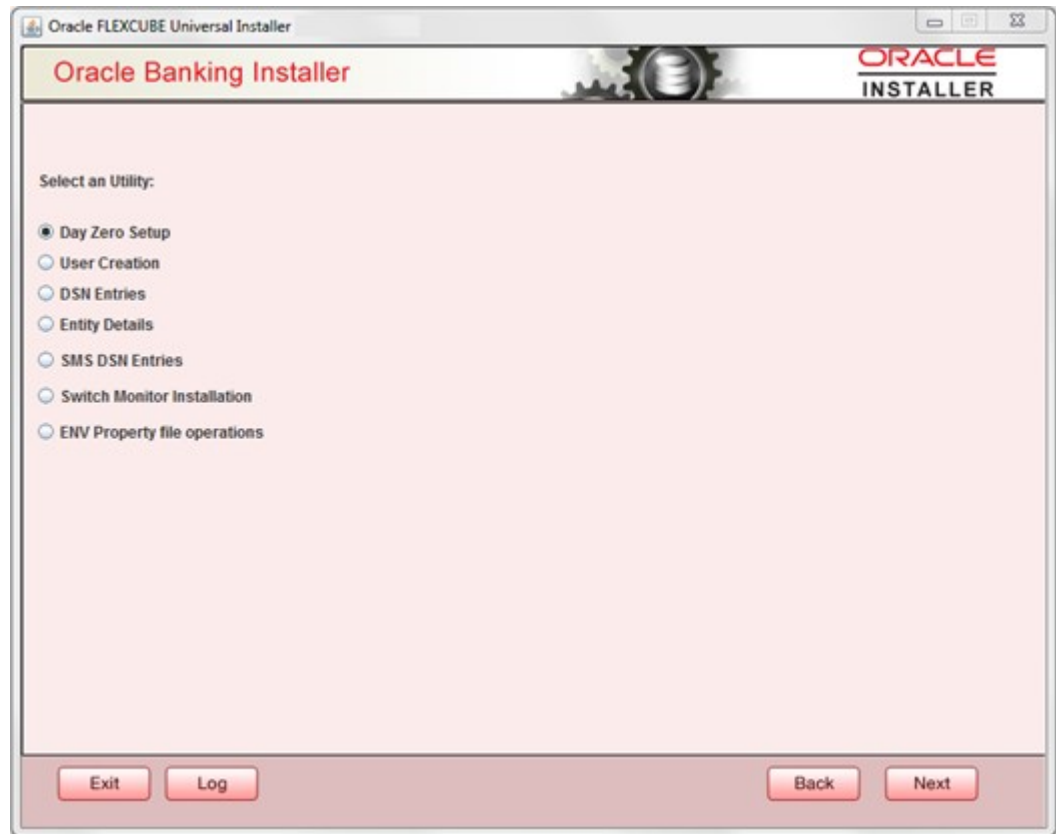
The **Welcome to Oracle Universal Banking Installer** screen displays.

Figure 1-1 Welcome to Oracle Universal Banking Installer



2. Select the **Utility** option and click the **Next** button.
The **Select an Utility** screen displays.

Figure 1-2 Select an Utility



3. Select **Day Zero Setup** and click the **Next** button.
The **Database Installation** screen displays.

Figure 1-3 Database Installation

4. On the **Database Installation** screen, specify the schema details.
For more information on fields, refer to the field description table below:

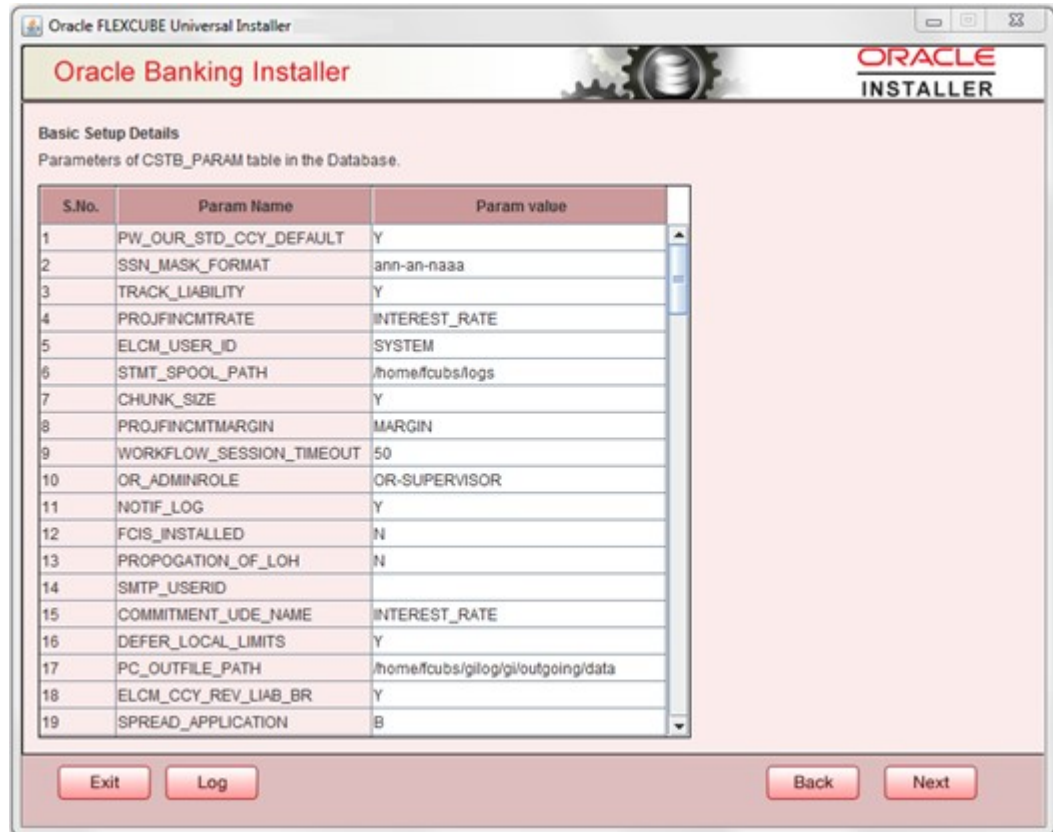
Table 1-2 Database Installation - Schema

Fields	Description
Username	Specify the user name to access the schema.
Password	Specify the schema password.
Service Name	Provide service name of database.
IP Address	Specify the IP address of the system where the database schema is installed. Note: IP Address should be the same as mentioned in the TNSnames.ora.
Port	Specify the port number.
TNS Connect Descriptor	Specify the TNS Connect Descriptor.

- a. Here Entity Schema is mandatory; at least a minimum of one entry should be provided.
- b. The Entity Id value is default i.e., **ENTITY_ID1** for the first entry.
- c. Provide the JNDI Name for the **ENTITY_ID1**. By default the jndi name is jdbc/fcjddevDS.
- d. Give the Schema Details for the Entity1.
- e. Here Compile In All Entities Field is **N**. (As using the Single Entity Concept).

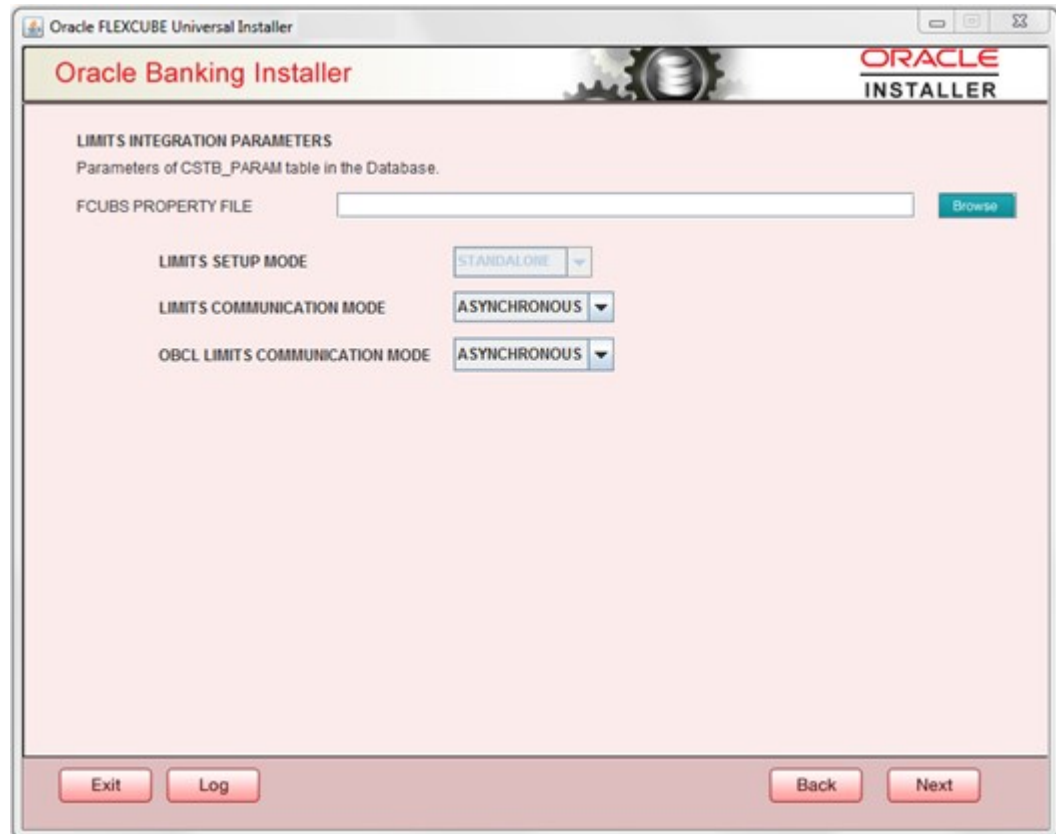
5. Click the **Next** button.
The **Basic Setup Details** screen displays.

Figure 1-4 Basic Setup Details



6. The screen displays basic setup details for table **CSTB_PARAM**.
 - a. Here Oracle directory name (present in all_directories table in the schema) must be added for **WORK_AREA** and **TRACE_AREA**. Oracle directory name must be added for other required parameters also.
 - b. Oracle directory creation in the schema can be done as below :
Create or replace directory dir_name as **directory_path**.
7. Click the **Next** button.
The **LIMITS INTEGRATION PARAMETERS** screen displays.

Figure 1-5 LIMITS INTEGRATION PARAMETERS



8. Browse **fcubs.properties** file.

The **Limits Integration Parameters** will be automatically populated based on values read from fcubs.properties file.

9. Click the **Next** button. The screen displays parameters for table SMTB_MODULES_GROUP.

Figure 1-6 Basic Setup Details - SMTB_MODULES_GROUP

Oracle FLEXCUBE Universal Installer 12.5.0.0.0

Oracle Banking Installer

Basic Setup Details

Parameters of SMTB_MODULES_GROUP table in the Database. [Update](#)

MODULE	MODULE DESCRIPTION	JNDI NAME
FCSMS	SMS	jdbc/fcdevDS
FCCOMN	Core Services	jdbc/fcdevDS
FCELCM	ELCM	jdbc/fcdevDS_EL
FCCPLN	Oracle FLEXCUBE Corporate Len...	jdbc/fcdevDS

Exit Log Back Next

If any change is required in the JNDI name, click **Update** to edit the same.

Note:

SMTB_MODULES_GROUP for FCELCM (Oracle ELCM) with the JNDI name '_EL.' For example, if the **ENTITY_ID** JNDI name is **jdbc/fcdevDS**, then you need to update the JNDI name **jdbc/fcdevDS_EL**.

10. Click the **Next** button.

The **Basic Setup Details - Bank and Branch** screen displays.

Figure 1-7 Basic Setup Details - Bank and Branch

Oracle FLEXCUBE Universal Installer 12.5.0.0.0

Oracle Banking Installer

Basic Setup Details
Basic Details for bank and branch

Bank Code: CH0
Bank Name: City Head Office
Branch Code: 000
Country Code:
Country Description:
Cheque Number Mask: NNNN
Host Code: HOST1
Process Deployment: BPEL
TimeZone: Asia/Calcutta

Basic details about dates. The Date Format must be yyyy/mm/dd.

Input Date: 2018/04/20
Current Business Date: 2018/04/20
Previous Business Date: 2018/04/19
Next Business Date: 2018/04/21
Next To Next Business Date: 2018/04/22

Exit Log Back Next

11. On the **Basic Setup Details - Bank and Branch** screen, specify the bank, branch and date details.

Table 1-3 Basic Setup Details - Bank, Branch and Dates

Fields	Description
Bank Code	Specify the bank code.
Bank Name	Specify the bank name.
Branch Code	Specify the branch code.
Country Code	Specify the Country code.
Country Description	Specify the Country Description.
Cheque Number Mask	Specify the Cheque Number Mask.
Process Deployment	Choose mode of process deployment between BPEL or BPMN
Input Date	Specify the input date.
Current Business Date	Specify the current business date.
Previous Business Date	Specify the previous business date.
Next Business Date	Specify the next business date.
Next to Next Business Date	Specify the next to next business date.

12. Click the **Next** button.

The **Basic Setup Details - Currency Details** screen displays.

Figure 1-8 Basic Setup Details - Currency Details

Oracle FLEXCUBE Universal Installer 12.5.0.0.0

Oracle Banking Installer ORACLE INSTALLER

Basic Setup Details

Currency Details.

Local Currency Code: USD

Local Currency Name: US DOLLAR

Current Fin Cycle: 2011

Current Fin Period: QT1

ISO Currency Code: 294

☐ External Password

No	User Name	Password or LDAP User name
1	ADMINUSER1	*****
2	ADMINUSER2	*****

Exit Log Back Next

13. On the **Basic Setup Details - Currency Details** screen, specify the fields.
For more information, refer to the fields description table.

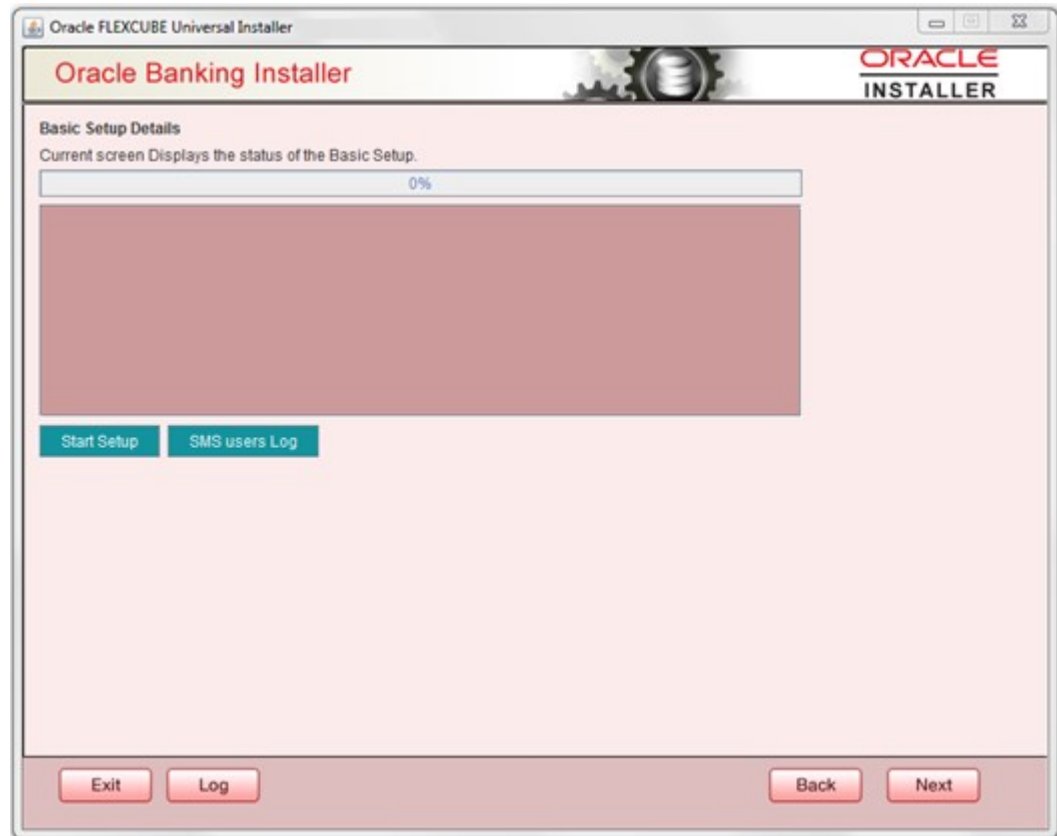
Table 1-4 Basic Setup Details - Currency Details

Fields	Description
Local Currency Code	Specify Local Currency Code.
Local Currency Name	Specify Local Currency Name.
Current Fin Cycle	Specify Current Financial Cycle (any year from 2011 to 2050)
Current Fin Period	Specify Current Financial Period (QT1 to QT4,M01 to M12).
ISO Currency Code	Specify ISO Currency Code. The screen also displays basic setup details for creating a user in Corporate Lending. The creation of a SYSTEM user is mandatory for payments processing. It needs to be created as part of a static data setup.
External Password	Check this box to specify the external password.
User Name	Displays the user name. Change the user name if required.
Password or LDAP User Name	Specify the password and it is mandatory. You can use the following characters in the password: <ul style="list-style-type: none"> Alphabets in uppercase Alphabets in lowercase Numerals Note: Do not use ' _ ' (underscore) in the password.

14. Click the **Next** button.

The **Basic Setup Details - Status** screen displays.

Figure 1-9 Basic Setup Details - Status



15. Click the **Start Setup** button to compile the entries. On completion, the below screen will be seen.

The **Basic Setup Details - Status Completed** screen displays.

Figure 1-10 Basic Setup Details - Status Completed

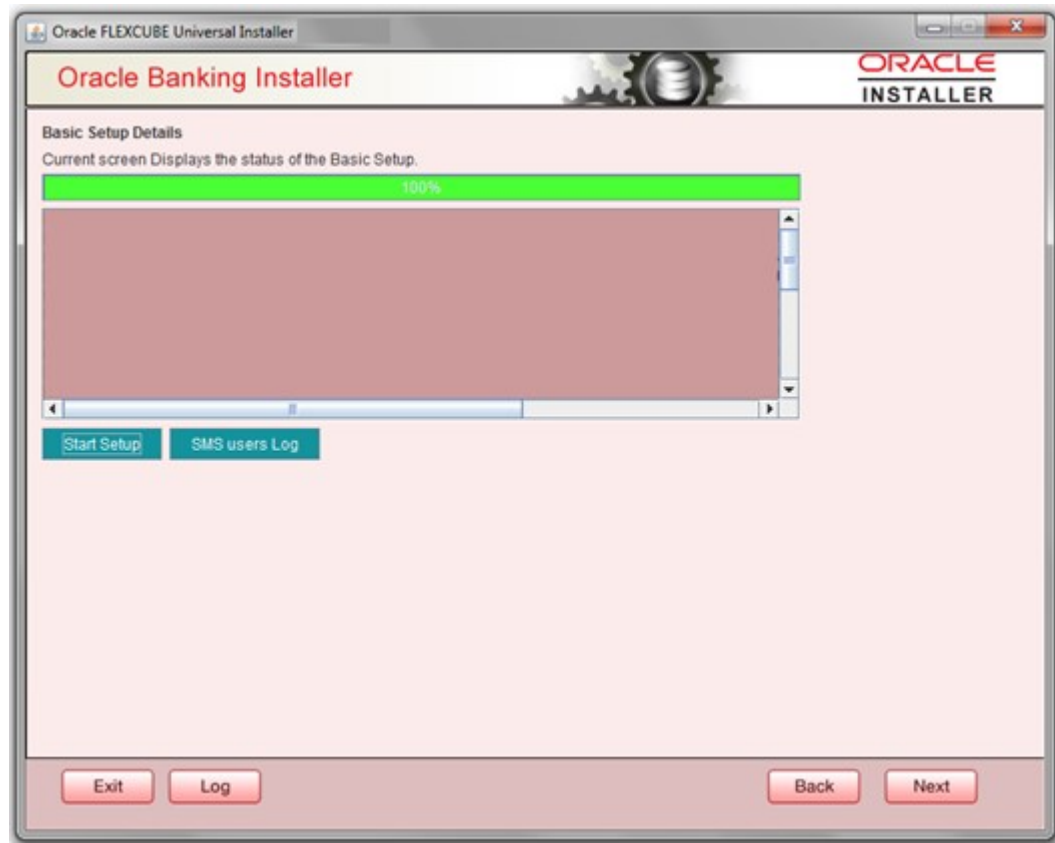
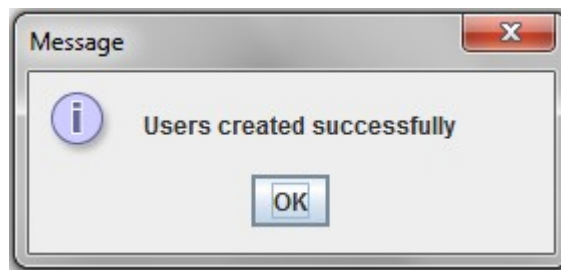


Figure 1-11 Message



16. Click the **SMS users Log** button to view user created logs.
17. Click the **Next** button.

1.4 Compilation of ADF files

This topic describes about Compilation of ADF files.

In the ADF files, update the branch code where the GI upload is going to happen and compile the ADF file. ADF Files are available in the path - ROFC/MAIN/ADF.