

Oracle® Banking Corporate Lending

Standalone Scheduler Property File Creation



Release 14.7.6.0.0
G32290-01
April 2025

ORACLE®

Copyright © 2007, 2025, Oracle and/or its affiliates.

This software and related documentation are provided under a license agreement containing restrictions on use and disclosure and are protected by intellectual property laws. Except as expressly permitted in your license agreement or allowed by law, you may not use, copy, reproduce, translate, broadcast, modify, license, transmit, distribute, exhibit, perform, publish, or display any part, in any form, or by any means. Reverse engineering, disassembly, or decompilation of this software, unless required by law for interoperability, is prohibited.

The information contained herein is subject to change without notice and is not warranted to be error-free. If you find any errors, please report them to us in writing.

If this is software, software documentation, data (as defined in the Federal Acquisition Regulation), or related documentation that is delivered to the U.S. Government or anyone licensing it on behalf of the U.S. Government, then the following notice is applicable:

U.S. GOVERNMENT END USERS: Oracle programs (including any operating system, integrated software, any programs embedded, installed, or activated on delivered hardware, and modifications of such programs) and Oracle computer documentation or other Oracle data delivered to or accessed by U.S. Government end users are "commercial computer software," "commercial computer software documentation," or "limited rights data" pursuant to the applicable Federal Acquisition Regulation and agency-specific supplemental regulations. As such, the use, reproduction, duplication, release, display, disclosure, modification, preparation of derivative works, and/or adaptation of i) Oracle programs (including any operating system, integrated software, any programs embedded, installed, or activated on delivered hardware, and modifications of such programs), ii) Oracle computer documentation and/or iii) other Oracle data, is subject to the rights and limitations specified in the license contained in the applicable contract. The terms governing the U.S. Government's use of Oracle cloud services are defined by the applicable contract for such services. No other rights are granted to the U.S. Government.

This software or hardware is developed for general use in a variety of information management applications. It is not developed or intended for use in any inherently dangerous applications, including applications that may create a risk of personal injury. If you use this software or hardware in dangerous applications, then you shall be responsible to take all appropriate fail-safe, backup, redundancy, and other measures to ensure its safe use. Oracle Corporation and its affiliates disclaim any liability for any damages caused by use of this software or hardware in dangerous applications.

Oracle®, Java, MySQL, and NetSuite are registered trademarks of Oracle and/or its affiliates. Other names may be trademarks of their respective owners.

Intel and Intel Inside are trademarks or registered trademarks of Intel Corporation. All SPARC trademarks are used under license and are trademarks or registered trademarks of SPARC International, Inc. AMD, Epyc, and the AMD logo are trademarks or registered trademarks of Advanced Micro Devices. UNIX is a registered trademark of The Open Group.

This software or hardware and documentation may provide access to or information about content, products, and services from third parties. Oracle Corporation and its affiliates are not responsible for and expressly disclaim all warranties of any kind with respect to third-party content, products, and services unless otherwise set forth in an applicable agreement between you and Oracle. Oracle Corporation and its affiliates will not be responsible for any loss, costs, or damages incurred due to your access to or use of third-party content, products, or services, except as set forth in an applicable agreement between you and Oracle.

Contents

Preface

Purpose	iv
Audience	iv
Documentation Accessibility	iv
Critical Patches	v
Diversity and Inclusion	v
Related Resources	v
Conventions	v
Screenshot Disclaimer	v
Acronyms and Abbreviations	vi

1 Create Property File for Standalone scheduler

1.1 Create Property File	1-1
1.1.1 Configure General Properties	1-5
1.1.2 Configure Single Sign on	1-7
1.1.3 Configure SMTPS Details	1-8
1.1.4 Configure Scheduler Queues	1-9
1.1.5 Configure EMS FTP/FTPS Properties	1-13
1.1.6 Configure GI Upload Queue	1-14
1.1.7 Save Property File	1-15

Preface

This topic contains the following sub-topics:

- [Purpose](#)
- [Audience](#)
- [Documentation Accessibility](#)
- [Critical Patches](#)
- [Diversity and Inclusion](#)
- [Related Resources](#)
- [Conventions](#)
- [Screenshot Disclaimer](#)
- [Acronyms and Abbreviations](#)

Purpose

This guide helps the user to create property file for Standalone Scheduler. This guide helps the user with the installation of Oracle Banking Application.

Audience

This manual is intended for the following User/User Roles:

Table 1 Audience

Role	Function
Administrator	Who controls the system and application parameters and ensures smooth functionality and flexibility of the banking application.
Implementation team	Implementation of Oracle Banking Corporate Lending Solution
Pre-sales team	Install Oracle Banking Corporate Lending for demo purpose
Bank personnel	Who installs Oracle Banking Corporate Lending

The user of this manual is expected to have basic understanding of Oracle Banking Application installation.

Documentation Accessibility

For information about Oracle's commitment to accessibility, visit the Oracle Accessibility Program website at <https://www.oracle.com/corporate/accessibility/>.

Access to Oracle Support

Oracle customer access to and use of Oracle support services will be pursuant to the terms and conditions specified in their Oracle order for the applicable services.

Critical Patches

Oracle advises customers to get all their security vulnerability information from the Oracle Critical Patch Update Advisory, which is available at [Critical Patches, Security Alerts and Bulletins](#). All critical patches should be applied in a timely manner to ensure effective security, as strongly recommended by [Oracle Software Security Assurance](#).

Diversity and Inclusion

Oracle is fully committed to diversity and inclusion. Oracle respects and values having a diverse workforce that increases thought leadership and innovation. As part of our initiative to build a more inclusive culture that positively impacts our employees, customers, and partners, we are working to remove insensitive terms from our products and documentation. We are also mindful of the necessity to maintain compatibility with our customers' existing technologies and the need to ensure continuity of service as Oracle's offerings and industry standards evolve. Because of these technical constraints, our effort to remove insensitive terms is ongoing and will take time and external cooperation.

Related Resources

For more information on any related features, refer to the following documents:

- Oracle Banking Corporate Lending User Guides.
- Oracle Banking Corporate Lending Installation Guides.

Conventions

The following text conventions are used in this document:

Table 2 Conventions

Convention	Meaning
boldface	Boldface type indicates graphical user interface elements associated with an action, or terms defined in text or the glossary.
<i>italic</i>	Italic type indicates book titles, emphasis, or placeholder variables for which you supply particular values.
<code>monospace</code>	Monospace type indicates commands within a paragraph, URLs, code in examples, text that appears on the screen, or text that you enter.

Screenshot Disclaimer

Personal information used in the interface or documents is dummy and does not exist in the real world. It is only for reference purposes.

Acronyms and Abbreviations

The acronyms and abbreviations are listed in this below table:

Table 3 Acronyms and Abbreviations

Abbreviations or Acronyms	Definition
EAR	Enterprise Archive
EMS	Electronic Messaging Service
JNDI	Java Naming and Directory Interface
RTGS	Real-Time Gross Settlement
SFMS	Structured Financial Messaging System
SMTP	Simple Mail Transfer Protocol

1

Create Property File for Standalone scheduler

This topic contains the following sub-topics:

- [Create Property File](#)
This topic explains systematic instructions to create the property file using Oracle Universal Banking Installer.

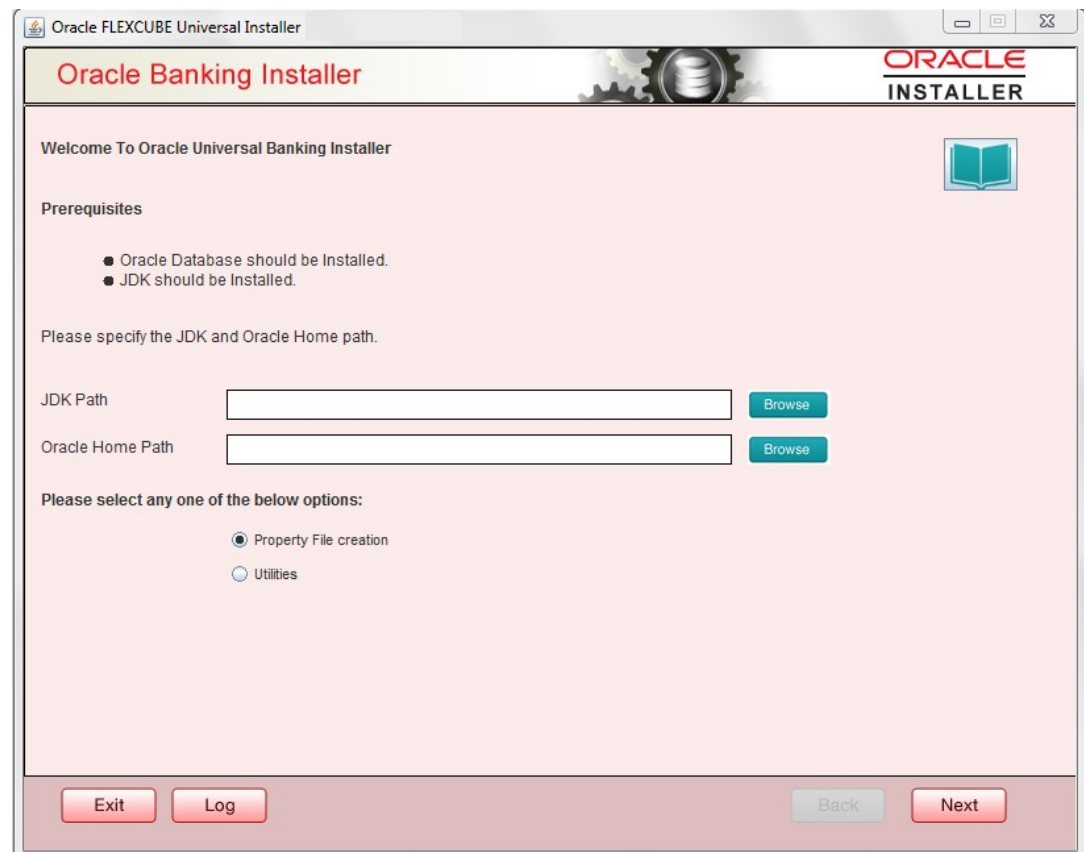
1.1 Create Property File

This topic explains systematic instructions to create the property file using Oracle Universal Banking Installer.

1. Launch **Oracle Universal Banking Installer**.

The **Welcome To Oracle Universal Banking Installer** screen displays.

Figure 1-1 Welcome To Oracle Universal Banking Installer



2. Specify **JDK path** and **Oracle Home path**, select the **Property File Creation** option and click **Next**.

The **Select One of the Components** screen displays.

Figure 1-2 Select One of the Components

Oracle FLEXCUBE Universal Installer 12.5.0.0.0

Oracle Banking Installer ORACLE INSTALLER

Select one of the Components

Load Existing Property File

☐ INFRA ☒ Scheduler ☐ Gateway ☐ Switch Interface Installation

Select Oracle Product Processors

☐ Oracle FLEXCUBE Universal Banking

☐ Oracle FLEXCUBE Enterprise Limits and Collateral Management (CO-DEPLOY)

☐ Oracle Banking Payments

☐ Oracle Banking Corporate Lending ☐ Open Development Tool

☐ Oracle Banking Treasury ☐ Oracle FLEXCUBE Universal Banking for JAPAN

☐ Oracle Banking Trade Finance

Select Plugins to be Installed

Host Address ☐ Origination ☐ Scheduler

☐ Reports ☐ SIANET Adapter

☐ DMS ☐ Insulation ☐ External Adapter required

3. Select the **Scheduler** component, and appropriate plugin if required, and then click **Next**. The **Provide Environment Details** screen displays.

Figure 1-3 Provide Environment Details

Oracle FLEXCUBE Universal Installer 12.5.0.0.0

Oracle Banking Installer **ORACLE INSTALLER**

Provide Environment details.

EAR Name: FCUBS

Context Name: FCJNeoWeb

File Separator Style: Linux

Application Server: Weblogic

☐ OBMA PP Installed

Application Server Path: C:/Oracle/Middleware/wlserver **Browse**

Source Path: C:/FCUBS_146/FCUBS_14.6.0.0.0 **Browse**

Ear Destination Path: C:/FCUBS_146/FCUBS_14.6.0.0.0 **Browse**

Cookie-Name (JSESSION_ID):

Exit Log Back Next

For more information on fields, refer to the field description table.

Table 1-1 Environment details - Field Description

Field	Description
EAR Name	Specify the EAR Name.
Context Name	Specify Context Name.
File Separator Style	Select File Separator Style from the drop-down list. The options are: <ul style="list-style-type: none">• Windows• Linux
Application Server	Select Application Server from the drop-down list. Example: Weblogic
Application Server Path	Browse the folder for Application Server.
Source Path	Browse the folder for Source Path.
EAR Destination path	Browse the folder for EAR Destination path.

4. Click **Next**.

The **Property File Creation** screen displays.

Figure 1-4 Property File Creation

Oracle FLEXCUBE Universal Installer 12.5.0.0.0

Oracle Banking Installer

ORACLE
INSTALLER

Property File Creation

Release: KERNEL

Hashing Algorithm Iteration Count: 10000

Security Key for Encryption Logic: oraclefinancials

Exit Log Back Next

For more information on fields, refer to the field description table below:

Table 1-2 Property File Creation - Field Description

Field	Description
Release	Select the release from the drop-down list.
Hashing Algorithm Iteration Count	This should be specified which will be used for encryption.
Security Key for Encryption Logic	This should be specified which will be used for encryption.

5. Click **Next**.

The **Property File Creation - DataSource** screen displays.

Figure 1-5 Property File Creation - DataSource

6. Specify JNDI value for the Data sources enabled and click **Next**.

This topic contains the following sub-topics:

- [Configure General Properties](#)
This topic describes the process of setting common properties of Standalone Installer.
- [Configure Single Sign on](#)
This topic describes the setting Sign-on for property file creation.
- [Configure SMTPS Details](#)
This topic explains the steps to enable SMTPS mail configuration for Scheduler.
- [Configure Scheduler Queues](#)
This topic explains systematic instructions to configure scheduler queues.
- [Configure EMS FTP/FTPS Properties](#)
This topic explains systematic instructions to configure EMS FTP/FTPS properties.
- [Configure GI Upload Queue](#)
This topic explains systematic instructions to configure the GI upload queue.
- [Save Property File](#)
This topic explains systematic instructions to save the property file after completing all the required settings.

1.1.1 Configure General Properties

This topic describes the process of setting common properties of Standalone Installer.

1. The installer displays the General Properties screen.
The **Property File Creation- General Property** screen displays.

Figure 1-6 Property File Creation - General Property

For more information on fields, refer to the field description table below:

Table 1-3 Property File Creation-General property

Field	Description
Debug Logs Required	<ul style="list-style-type: none"> If you require to debug option, select Yes from the drop-down list. If you do not require to debug option, select No from the drop-down list.
Work Area	Specify the work area. For example, <i>D:\BrnDbgs\</i>
Signature Path	Specify the location at which the signature images are placed.
Excel Path	Specify the location at which the excel files are generated.
Request Time Out	Specify the database request timeout value in milliseconds. This is the maximum number of seconds the database waits for a query to return the result.
Connection Time Out	Specify the database connection timeout value in seconds. This is the maximum number of seconds the application waits for a connection to the database to open.

Table 1-3 (Cont.) Property File Creation-General property

Field	Description
Session Time Out	Enter the session time-out value in seconds. This is the maximum number of seconds during which the application gets active without any user intervention. If there is no user intervention continuously for the duration specified here, the user session gets expired.
LOV Fetch Required	<p>If you select this checkbox, the option lists in Oracle FLEXCUBE display the matching values based on the first characters that you enter in a field.</p> <p>If you specify the first three characters of a value to be entered in an option list and tab out, the system displays the complete list of values that are matching the first three characters.</p> <p>If you do not select this checkbox, the option lists do not show the matching values based on the first few characters. You need to specify the complete value against the field.</p>
CSS style	Select Default or Custom from the drop-down. By default, the CSS Style name will be FLEXCUBE .
Language	Select the language from the drop-down list.
Version	Specify the version of the product.
Copyrights	Specify the Copyright of the product.

2. Once all the property details are entered, click **Next**.

1.1.2 Configure Single Sign on

This topic describes the setting Sign-on for property file creation.

On the **Property File Creation - Single Sign on** screen, specify the following details.

Figure 1-7 Property File Creation - Single Sign on

Oracle FLEXCUBE Universal Installer 12.5.0.0.0

Oracle Banking Installer **ORACLE INSTALLER**

Property File Creation - Single Sign on

SSO Required ☒ SSO Type **DEFAULT**

SSO KEY **DN** Authentication details maintained external to FLEXCUBE

External Password Required ☐ Authentication Type **DEFAULT**

External User Login Required ☐ **TOKEN**

☒ Platform Security SMS Security Key **oraclefinancials** **SAML**

Option to provide LDAP server details

No.	Name	Value
1	LDAP SERVER URL	LDAP://10.10.10.10:111
2	LDAP SSL ENABLED	<input type="checkbox"/>
3	SECURITY AUTHENTICATION TYPE	Simple
4	DOMAIN NAME	flexcube.com
5	LDAP SERVER TIMEOUT	0

Option to provide SAML details

No.	Name	Value
1	SAML CERTIFICATE PATH	D:\Security\SAML_Implementation\TestFiles\certicertstore\b...
2	SAML CERTIFICATE PASSWORD	*****
3	SAML CERTIFICATE ALIAS	barc
4	SAML VALID AUDIENCE	bPAID_BWSIT

Exit Log Back Next

For more information on fields, refer to the field description table below:

Table 1-4 Property File Creation - Single Sign on

Field	Description
Platform Security	Select this checkbox if required, it will be enabled for Scheduler.
SMS Security Key	This field is used to capture the security key value if the Platform Security checkbox is selected.

1.1.3 Configure SMTPS Details

This topic explains the steps to enable SMPTS mail configuration for Scheduler.

- On the **Property File Creation - SMTPS/DMS** screen, specify the details.

Figure 1-8 Property File Creation - SMTPS/DMS

Oracle FLEXCUBE Universal Installer 12.5.0.0.0

Oracle Banking Installer **ORACLE INSTALLER**

Property File Creation - SMTPS/DMS

Option for Mail configuring using SMTPS Protocol

No.	Name	Value
1	Host	samplename.mail.com
2	User Id	infra
3	User Password	*****
4	JNDI Name	mail/FCUBSMail

Option for modifying the DMS/IPM property values

No.	Name	Value
1	Login Service Address	http://10.10.10.10:1010/imaging/ws/LoginService
2	Document Service Address	http://10.10.10.10:1010/imaging/ws/DocumentService
3	Document Content Service Address	http://10.10.10.10:1010/imaging/ws/DocumentContentService
4	IPM User Name	testuser
5	IPM Password	*****

Exit Log Back Next

For more information on fields, refer to the field description table below:

Table 1-5 Property File Creation - SMTPS/DMS

Field	Description
Host	Specify the SMTP host name.
User ID	Specify the user ID.
User Password	Specify the user password.
JNDI Name	Specify the JNDI name.

1.1.4 Configure Scheduler Queues

This topic explains systematic instructions to configure scheduler queues.

1. On the **Property File Creation - Scheduler Queues** screen, specify the details.

Figure 1-9 Property File Creation - Scheduler Queues

For more information on fields, refer to the field description table below:

Table 1-6 Property File Creation - Scheduler Queues

Field	Description
Notify Destination	Specify the notify destination. Select one of the following options: <ul style="list-style-type: none"> QUEUE TOPIC
Queue Name	Set NOTIFY_DEST_QUEUE as the destination queue name.
Queue Connection Factory	Set NotifyDestQCF as the queue connection factory.
Secure	Select this checkbox to indicate that it is a secured queue connection factory. If you select this checkbox, the caller ID and caller password will be enabled.
Caller ID	Specify the caller ID for the secured queue connection factory.
Caller Password	Specify the password for the caller ID to access the secured queue connection factory. Note: If the queue connection factory is not secured, that is if you have not selected the Secure checkbox, the installer will not display the fields Caller ID and Caller Password . You need not provide these details in that case.

Table 1-6 (Cont.) Property File Creation - Scheduler Queues


Field	Description
Notify Queue Location	Specify the notify queue location. Select one of the following options: <ul style="list-style-type: none"> Internal External For the Oracle WebLogic application server, the notify queue location should be selected as Internal . If you choose External following details for the external queue will be enabled.
Provider URL	Specify the provide URL (iiop://localhost:1010). <div>  Note: 1010 is the default IIOP port. </div> Refer to the table Table 1-7
Security Principal	Specify the login ID to access the application server.
Security Credentials	Specify the password to access the application server. Click Next to proceed with the scheduler configuration.
Notify Deferred Queue Name	Set DEFERRED_DEST_QUEUE as the notify differed queue name.
Deferred Queue Connection Factory	Set DeferredDestQcf as the deferred queue connection factory.
Secure	Select this checkbox to indicate that it is a secured deferred queue connection factory. If you select this checkbox, caller ID and caller password will be enabled. Specify the caller ID and caller password for the secured deferred queue connection factory.
Notify Queue Name	Set NOTIFY_QUEUE as the notify queue name.
Dead Letter Queue Name	Set NOTIFY_QUEUE_DLQ as the dead letter queue name.
Notify Queue Connection Factory	Set NOTIFY_MDB_QCF as the notify queue connection factory.
Secure	Select this checkbox to indicate that it is secured notify internal Queue. If you check this box, caller ID and caller password will be enabled. Specify the caller ID and caller password for the secured notify queue connection factory.

Table 1-7 Oracle WebLogic Application Server

Application Server	EMS Out Initial Context Factory
Oracle WebLogic	t3://<ip_adress>:port For example, t3://10.10.10.10:1010 Note: Here, 10.10.10.10 represents the local host and 1010 to the target server default port (AdminServer/ManagedServer).

- Click **Next**.

The **Property File Creation - Scheduler EMS Queue** screen displays.

- On the **Property File Creation - Scheduler EMS Queue** screen, specify the details.

Figure 1-10 Property File Creation - Scheduler EMS Queue

No.	Name	Value
1	Incoming Dead Letter Queue Name	EMS_QUEUE_DLQ
2	Incoming backup Queue Name	EMS_QUEUE_BACK
3	Incoming Queue Connection Factory	EmsQcf
4	Secure Incoming Queue Connection	<input type="checkbox"/>
5	Incoming Queue Caller Id	
6	Incoming Queue Caller Password	
7	Outgoing Dead Letter Queue Name	EMS_QUEUE_DLQ
8	Outgoing Queue Connection Factory	EmsQcf
9	Secure Outgoing Queue Connection	<input type="checkbox"/>
10	Outgoing Queue Caller Id	
11	Outgoing Queue Caller Password	
12	Outgoing Queue Provider Uri	t3://10.10.10.10:1010
13	Queue Principal	*****
14	Queue Credential	*****
15	Incoming Queue Name	EMS_INQUEUE
16	Outgoing Queue Name	EMS_OUTQUEUE
17	SFMS Incoming Queue	SFMS_INQUEUE
18	RTGS Incoming Queue	RTGS_INQUEUE
19	EMS Bulker Queue	BULKER_QUEUE

Buttons: Exit, Log, Back, Next

For more information on fields, refer to the field description table below:

Table 1-8 Property File Creation - Scheduler EMS Queue

Field	Description
Incoming Dead Letter Queue Name	Set EMS_QUEUE_DLQ as the incoming dead letter queue name.
Incoming Backup Queue Name	Set EMS_QUEUE_BACK as the incoming backup queue name.
Incoming Queue Connection Factory	Set EmsQcf as the incoming queue connection factory.
Secure Incoming Queue Connection	Check this box to indicate that it is a secured queue connection.
Incoming Queue Caller ID	Specify the caller ID for the secured queue connection.
Incoming Queue Caller Password	Specify the caller password for the secured queue connection.
Outgoing Dead Letter Queue Name	Set EMS_QUEUE_DLQ as the outgoing dead letter queue name.
Outgoing Queue Connection Factory	Set EmsQcf as the outgoing queue connection factory.
Secure Outgoing Queue Connection	Check this box to indicate that it is a secured outgoing queue connection.
Outgoing Queue Caller ID	Specify the caller ID for the secured queue connection.
Outgoing Queue Caller Password	Specify the caller Password for the secured queue connection.

Table 1-8 (Cont.) Property File Creation - Scheduler EMS Queue

Field	Description
Outgoing Queue Provider URL	Specify the URL of the outgoing queue.
Queue Principal	Specify the queue principal.
Queue Credential	Specify the queue credential.
Incoming Queue Name	Specify the incoming queue name.
Outgoing Queue Name	Specify the outgoing queue name.
SFMS Incoming Queue	Specify the SFMS Incoming Queue.
RTGS Incoming Queue	Specify the RTGS incoming Queue.
EMS Bulker Queue	Specify the EMS Bulker Queue.

- Once the above details are specified, click **Next**.

1.1.5 Configure EMS FTP/FTPS Properties

This topic explains systematic instructions to configure EMS FTP/FTPS properties.

- On the **Property File Creation - EMS FTP/FTPS** screen, specify the details.

Figure 1-11 Property File Creation - EMS FTP/FTPS

Oracle FLEXCUBE Universal Installer

Oracle Banking Installer ORACLE INSTALLER

Property file Creation - EMS FTP/FTPS
Option for Scheduler EMS FTP/FTPS configuring.

No.	Name	Value
1	File TransferMode FTPS	FTPS
2	Server	10.10.10.10
3	User id	OFSS
4	Password	*****
5	File Type	.txt
6	Swift Format	1
7	Swift Message Delimiter	<input checked="" type="checkbox"/>
8	Swift Message Terminator	<input checked="" type="checkbox"/>
9	MEDIA	SWIFT

Option for EMS -Structured Financial Messaging System configuration

No.	Name	Value
1	Signature Block	<input checked="" type="checkbox"/>
2	Keystore File Name	/keystore
3	Keystore Alias name	*****
4	Keystore Password	*****

Exit Log Back Next

For more information on fields, refer to the field description table below:

Table 1-9 Property File Creation - EMS FTP/FTPS

Field	Description
File Transfer Mode FTPS	Specify the mode of transferring files to EMS. Select one of the following: <ul style="list-style-type: none">• FTPS• SFTP• HTTP
Server	Specify the server IP address for the selected file transfer mode.
User ID	Specify the user ID to access the server of the file transfer mode.
Password	Specify the password for the above user ID.
File Type	Specify the type of file that is transferred. By default, the installer sets it as .txt .
SWIFT Message Delimiter	Select the check box if needed.
SWIFT Message Terminator	Select the check box if needed.
Media	Specify the Media.
Signature Block	Check this box to enable the signature block.
Keystore File Name	Specify the Keystore file name.
Keystore Alias Name	Specify the Keystore alias name.
Keystore Password	Specify the Keystore password.

2. Once the above details are specified, click **Next**.

1.1.6 Configure GI Upload Queue

This topic explains systematic instructions to configure the GI upload queue.

1. On the **Property File Creation - Scheduler GI Upload Queue** screen, specify the details.

Figure 1-12 Property File Creation - Scheduler GI Upload Queue

Oracle FLEXCUBE Universal Installer 12.5.0.0.0

Oracle Banking Installer **ORACLE INSTALLER**

Property File Creation - Scheduler GI Upload Queue
Option for configuring details for Scheduler GI Upload Queue

Queue Name: INTERNAL_GI_UPLOAD_QUEUE

Dead Letter Queue Name: INTERNAL_GI_UPLOAD_DLQ

Queue connection factory: GI_UPLOAD_QCF

☐ Secure Caller ID:

Caller Password:

Exit Log Back Next

For more information on fields, refer to the field description table below:

Table 1-10 Property File Creation - Scheduler GI Upload Queue

Field	Description
Queue Name	Specify the queue name as INTERNAL_GI_UPLOAD_QUEUE .
Dead Letter Queue Name	Specify the dead letter queue name as INTERNAL_GI_UPLOAD_DLQ .
Queue Connection Factory	Specify the queue connection factory as GI_UPLOAD_QCF .
Secure	Select this checkbox to indicate that it is a secured deferred queue connection factory.
Caller ID and Caller Password	Specify the caller ID and caller password for the secured queue connection factory.

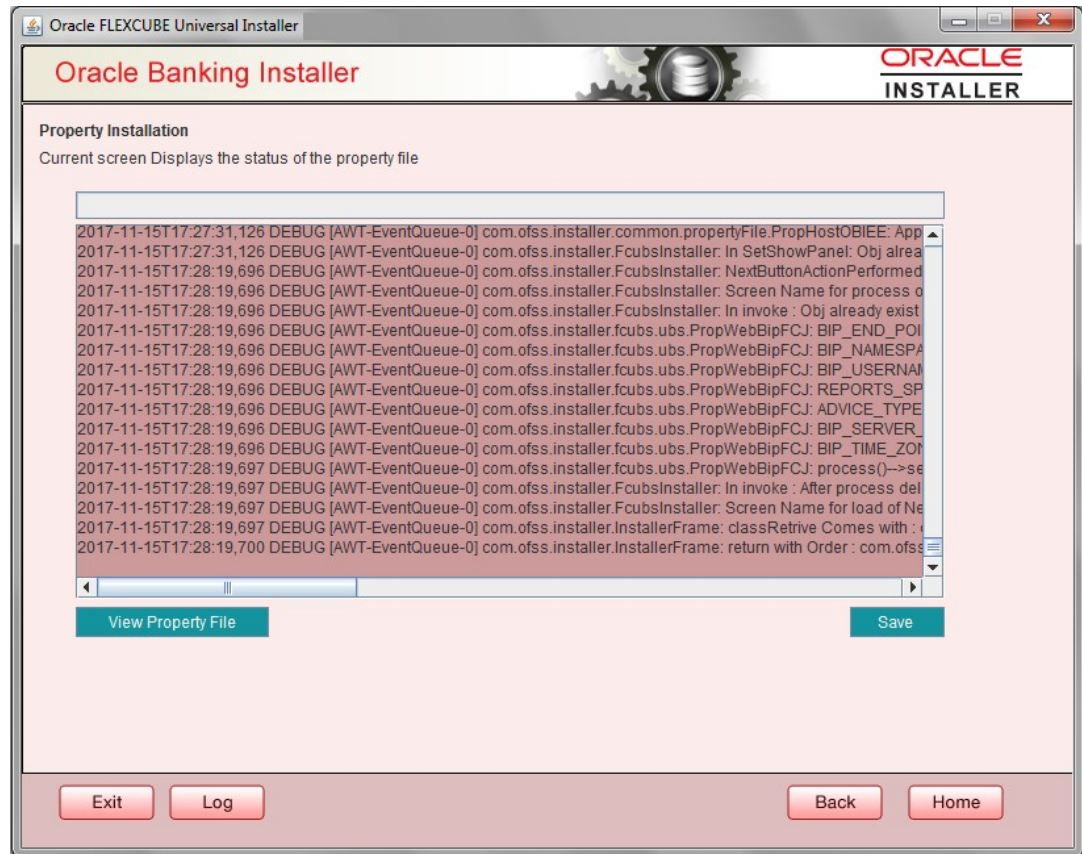
- Once the above details are specified, click **Next**.

1.1.7 Save Property File

This topic explains systematic instructions to save the property file after completing all the required settings.

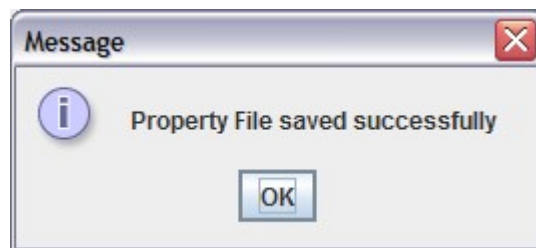
- After completing all the required settings explained above, save the property file.

Figure 1-13 Property Installation



2. View the status of property file creation on the above screen.
Once the file is saved, the installer displays the pop-up message.

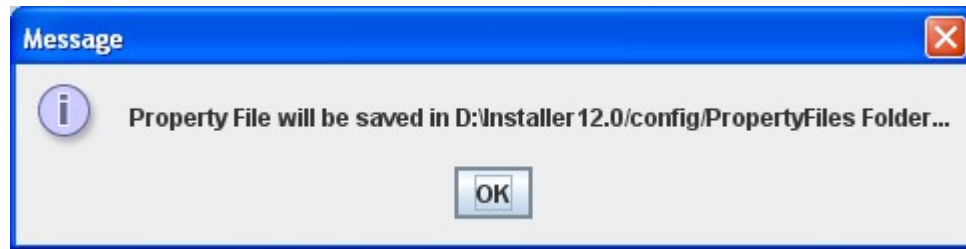
Figure 1-14 Message



Two property files **fcubs.properties** and **scheduler.properties** are saved.

If you do not use **Save** or **Save As** options, the installer saves the properties file in the `<InstallerSources>\config\PropertyFiles` folder. In that case, the following message displays.

Figure 1-15 Message



This completes the properties file creation.