

Oracle® Banking Microservices Architecture

Customer Service Installation Guide



14.8.0.0.0
G29750-01
April 2025

ORACLE®

Copyright © 2021, 2025, Oracle and/or its affiliates.

This software and related documentation are provided under a license agreement containing restrictions on use and disclosure and are protected by intellectual property laws. Except as expressly permitted in your license agreement or allowed by law, you may not use, copy, reproduce, translate, broadcast, modify, license, transmit, distribute, exhibit, perform, publish, or display any part, in any form, or by any means. Reverse engineering, disassembly, or decompilation of this software, unless required by law for interoperability, is prohibited.

The information contained herein is subject to change without notice and is not warranted to be error-free. If you find any errors, please report them to us in writing.

If this is software, software documentation, data (as defined in the Federal Acquisition Regulation), or related documentation that is delivered to the U.S. Government or anyone licensing it on behalf of the U.S. Government, then the following notice is applicable:

U.S. GOVERNMENT END USERS: Oracle programs (including any operating system, integrated software, any programs embedded, installed, or activated on delivered hardware, and modifications of such programs) and Oracle computer documentation or other Oracle data delivered to or accessed by U.S. Government end users are "commercial computer software," "commercial computer software documentation," or "limited rights data" pursuant to the applicable Federal Acquisition Regulation and agency-specific supplemental regulations. As such, the use, reproduction, duplication, release, display, disclosure, modification, preparation of derivative works, and/or adaptation of i) Oracle programs (including any operating system, integrated software, any programs embedded, installed, or activated on delivered hardware, and modifications of such programs), ii) Oracle computer documentation and/or iii) other Oracle data, is subject to the rights and limitations specified in the license contained in the applicable contract. The terms governing the U.S. Government's use of Oracle cloud services are defined by the applicable contract for such services. No other rights are granted to the U.S. Government.

This software or hardware is developed for general use in a variety of information management applications. It is not developed or intended for use in any inherently dangerous applications, including applications that may create a risk of personal injury. If you use this software or hardware in dangerous applications, then you shall be responsible to take all appropriate fail-safe, backup, redundancy, and other measures to ensure its safe use. Oracle Corporation and its affiliates disclaim any liability for any damages caused by use of this software or hardware in dangerous applications.

Oracle®, Java, MySQL, and NetSuite are registered trademarks of Oracle and/or its affiliates. Other names may be trademarks of their respective owners.

Intel and Intel Inside are trademarks or registered trademarks of Intel Corporation. All SPARC trademarks are used under license and are trademarks or registered trademarks of SPARC International, Inc. AMD, Epyc, and the AMD logo are trademarks or registered trademarks of Advanced Micro Devices. UNIX is a registered trademark of The Open Group.

This software or hardware and documentation may provide access to or information about content, products, and services from third parties. Oracle Corporation and its affiliates are not responsible for and expressly disclaim all warranties of any kind with respect to third-party content, products, and services unless otherwise set forth in an applicable agreement between you and Oracle. Oracle Corporation and its affiliates will not be responsible for any loss, costs, or damages incurred due to your access to or use of third-party content, products, or services, except as set forth in an applicable agreement between you and Oracle.

Contents

1 Customer Service Installation Guide

1.1	Customer Service	1-1
1.1.1	Server Setup	1-2
1.1.2	Customer Service Maintenance	1-3
1.1.3	WAR Deployment	1-4
1.1.4	Server Restart	1-5

Index

Preface

- [Purpose](#)
- [Audience](#)
- [Documentation Accessibility](#)
- [Critical Patches](#)
- [Diversity and Inclusion](#)
- [Conventions](#)
- [Screenshot Disclaimer](#)
- [Related Resources](#)

Purpose

This guide helps you to install the Party Services, User Interface, and Conductor Process flow on designated environments.

Audience

This document is intended for WebLogic admin or ops-web team who are responsible for installing the banking products of Oracle Financial Services Software Limited.

Documentation Accessibility

For information about Oracle's commitment to accessibility, visit the Oracle Accessibility Program website at <http://www.oracle.com/pls/topic/lookup?ctx=acc&id=docacc>.

Access to Oracle Support

Oracle customers that have purchased support have access to electronic support through My Oracle Support. For information, visit <http://www.oracle.com/pls/topic/lookup?ctx=acc&id=info> or visit <http://www.oracle.com/pls/topic/lookup?ctx=acc&id=trs> if you are hearing impaired.

Critical Patches

Oracle advises customers to get all their security vulnerability information from the Oracle Critical Patch Update Advisory, which is available at [Critical Patches](#), [Security Alerts and Bulletins](#). All critical patches should be applied in a timely manner to make sure effective security, as strongly recommended by [Oracle Software Security Assurance](#).

Diversity and Inclusion

Oracle is fully committed to diversity and inclusion. Oracle respects and values having a diverse workforce that increases thought leadership and innovation. As part of our initiative to build a more inclusive culture that positively impacts our employees, customers, and partners, we are working to remove insensitive terms from our products and documentation. We are also mindful of the necessity to maintain compatibility with our customers' existing technologies and

the need to ensure continuity of service as Oracle's offerings and industry standards evolve. Because of these technical constraints, our effort to remove insensitive terms is ongoing and will take time and external cooperation.

Conventions

The following text conventions are used in this document:

Convention	Meaning
boldface	Boldface type indicates graphical user interface elements associated with an action, or terms defined in text or the glossary.
<i>italic</i>	Italic type indicates book titles, emphasis, or placeholder variables for which you supply particular values.
<code>monospace</code>	Monospace type indicates commands within a paragraph, URLs, code in examples, text that appears on the screen, or text that you enter.

Screenshot Disclaimer

Information used in the interface or documents are dummy, it does not exist in real world, and its only for reference purpose.

Related Resources

For more information, see these Oracle resources:

- *License Guide*
- *Oracle Banking Microservices Platform Foundation Installation Guide*
- *Common Core Services Installation Guide*
- *Security Management System Services Installation Guide*

1

Customer Service Installation Guide

This document provides step-by-step instructions to install Customer Services in the Oracle Banking Origination Application Server.

Prerequisites

Weblogic domain

- [Customer Service](#)
This topic describes about the customer service.

1.1 Customer Service

This topic describes about the customer service.

The Customer Services Setup has the following set of services:

- INFRA Services
 - Discovery Service
 - Config Service
- Customer Services

The following table describes the services available in Customer Services Setup:

Table 1-1 Service Details

Service		Service Name	Usage
INFRA Services	Discovery	plato-discovery-service	This service is required for registering all the Customer Services during start-up. The registered services use the Discovery Service to make inter service calls.
	Config Service	plato-config-service	This service provides required configuration details for the corresponding Customer Services during service start-up, by referring the database table (table name: PROPERTIES). The mentioned database table stores all the configuration related details.
Customer Services		obpy-customer-services	This service is used to fetch the customer details.

This topic contains the following subtopics:

- [Server Setup](#)
This topic provides the systematic instructions to setup the server.
- [Customer Service Maintenance](#)
This topic provides the information about the customer service maintenance.

- [WAR Deployment](#)
This topic provides the information about the war deployment.
- [Server Restart](#)
This topic describes about the server restart.

1.1.1 Server Setup

This topic provides the systematic instructions to setup the server.

Before deploying the Customer Services **WAR** files, The user must setup managed servers for the services.

1. In the **Application Server**, set up two **Managed Servers** for **INFRA Service**, and **Customer Service** respectively.
2. Name the **Managed Servers** as **ConfigServer**, and **CustomerServer** respectively.

Note:

Any name can be provided to the Managed Servers, and the INFRA Service and Customer Service can be deployed in the any corresponding server created for that service.

3. Create the following Data Sources for **INFRA Service**, and **Customer Service**:

Data Source JNDI Name	Type	Target
jdbc/UBSCUSTOMER	Non-XA Datasource	Customer Service
jdbc/PLATO	Non-XA Datasource	ConfigServer

4. Include the following line in **setDomainEnv.cmd** or **setDomainEnv.sh** of the Weblogic domain:

For Linux Server:

Syntax

```
JAVA_OPTIONS="${JAVA_OPTIONS} ${JAVA_PROPERTIES} -Dflyway.enabled=false -  
Dspring.flyway.enabled=false -Dplato.services.config.uri=http://<config-server-ip>:<config-  
server-port> -Dplato.service.logging.path=<Debug Path where Logs are to be written>"
```

```
export JAVA_OPTIONS
```

Sample

```
JAVA_OPTIONS="${JAVA_OPTIONS} ${JAVA_PROPERTIES} -Dflyway.enabled=false -  
Dspring.flyway.enabled=false -Dplato.services.config.uri=http://10.10.10.10:1010 -  
Dplato.service.logging.path=/mnt/FC144/ICLogs"
```

```
export JAVA_OPTIONS
```

For Windows Server:

Syntax

```
set JAVA_OPTIONS=%JAVA_OPTIONS% %JAVA_PROPERTIES% -  
Dplato.services.config.uri=http://<config-server-ip>:<config-server-port> -  
Dflyway.enabled=false -Dsring.flyway.enabled=false -  
Dplato.service.logging.path=<Debug Path where Logs are to be written>
```

Sample

```
set JAVA_OPTIONS=%JAVA_OPTIONS% %JAVA_PROPERTIES% -
Dflyway.enabled=false -Dspring.flyway.enabled=false -Dplato.services.config.uri=http://
whf00bir:9005 -Dplato.service.logging.path=D:/ICLogs
```

If the Node-Manager is used to start the Managed Servers, the user need to perform the following steps:

5. Navigate to **Servers**. Under **Server**, click **Managed Server**.
6. Under **Managed Server**, click **Server Start**.
7. Set parameters specific to the **Managed Server** in the argument section.

1.1.2 Customer Service Maintenance

This topic provides the information about the customer service maintenance.

After setting up the Managed Servers for the **Customer Services**, the services must be enabled in the **FCUBS Maintenance** page.

1. Launch the **Amend Service Properties (CSDPROP.M)**.

The **Amend Service Properties** screen displays.

Figure 1-1 Amend Service Properties

2. On **Amend Service Properties** screen, specify the details and perform the actions.
For more information on fields, refer to the field description table.

Table 1-2 Amend Service Properties - Actions

Actions	Description
Unlock	Click Unlock at the top left corner.
Reference Number	Query the Reference Number from the list.
Service URL	Specify the Service URL . The syntax service URL is: http://<config-server-ip>:<config-server-port>/plato-discovery-service/eureka
Service Port	Specify the port of Managed Server (CustomerServer).

3. Click **Save** to save the specified details.

1.1.3 WAR Deployment

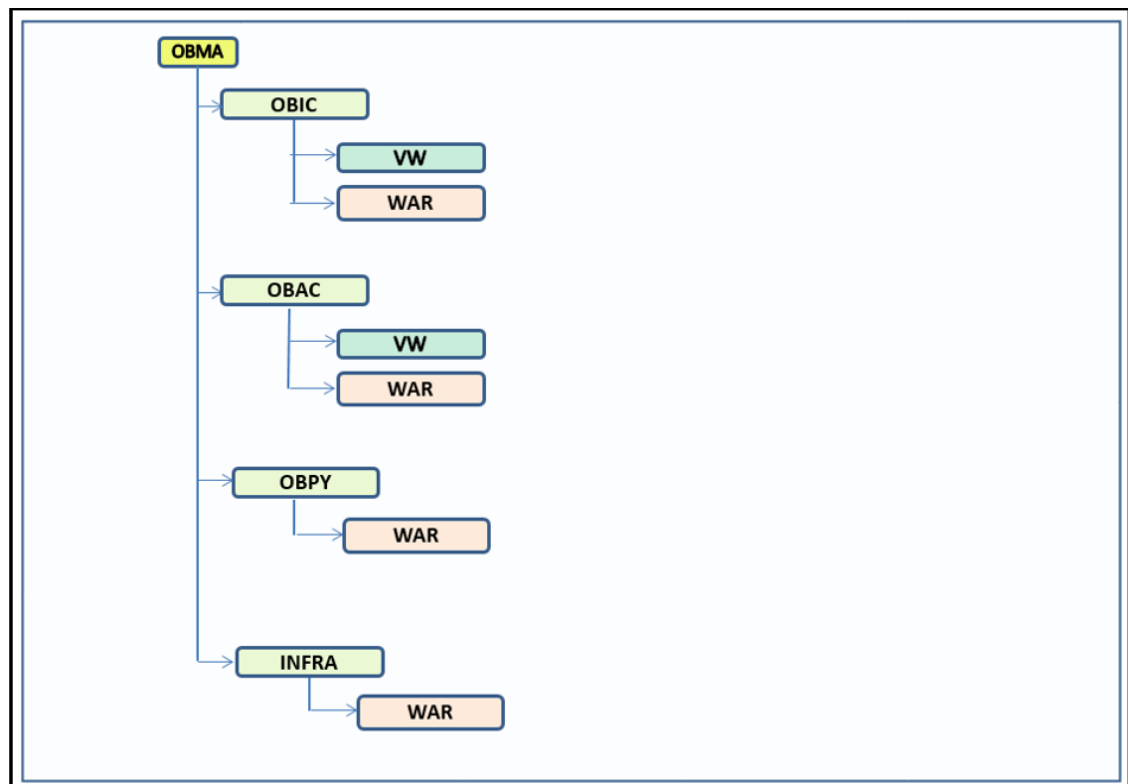
This topic provides the information about the war deployment.

While creating a FCUBS EAR build, Customer and INFRA war files are automatically copied into the destination location through installer along with FCUBS EAR.

After the completion of build creation, the following files will be available in the destination folder:

- FCUBS Application EAR and All Adapter EAR
- INFRA
- OBPY

Figure 1-2 Destination Folder Structure



1. Navigate to **INFRA** in the destination folder and copy the following **INFRA Service** WAR files.
 - plato-discovery-services-6.0.0.war
 - plato-config-services-6.0.0.war
2. Deploy the copied **INFRA Service** WAR files in **ConfigServer**.
3. Navigate to the **Oracle Banking Party** in the destination folder and copy the **Customer Service** WAR files.
4. Deploy the copied **Customer Service** WAR files in **CustomerServer**.

1.1.4 Server Restart

This topic describes about the server restart.

After deploying the Customer Services or restarting the Application server, start the services in the following sequence:

- plato-config-service
- plato-discovery-service
- obpy-customer-services



Note:

- After restarting the Application server, start the ConfigServer first and then start the CustomerServer.
- To enable Discovery service to fetch properties entries for self-registration from plato-config-service, plato-discovery-service must be stopped and started whenever the ConfigServer is restarted

The deployed Customer Services are listed in the service discovery URL.

To confirm the running status of all the services, check the service discovery URL.

Service Discovery URL Syntax:

`http://<config-server-ip>:<config-server-port>/plato-discovery-service`

Index

C

Customer Service, [1-1](#)

Customer Service Installation Guide, [1-1](#)

Customer Service Maintenance, [1-3](#)

S

Server Restart, [1-5](#)

Server Setup, [1-2](#)

W

WAR Deployment, [1-4](#)