

JD Edwards EnterpriseOne

Tools Release Upgrade Process Guide

9.2

Copyright © 2011, 2024, Oracle and/or its affiliates.

This software and related documentation are provided under a license agreement containing restrictions on use and disclosure and are protected by intellectual property laws. Except as expressly permitted in your license agreement or allowed by law, you may not use, copy, reproduce, translate, broadcast, modify, license, transmit, distribute, exhibit, perform, publish, or display any part, in any form, or by any means. Reverse engineering, disassembly, or decompilation of this software, unless required by law for interoperability, is prohibited.

The information contained herein is subject to change without notice and is not warranted to be error-free. If you find any errors, please report them to us in writing.

If this is software or related documentation that is delivered to the U.S. Government or anyone licensing it on behalf of the U.S. Government, then the following notice is applicable:

U.S. GOVERNMENT END USERS: Oracle programs (including any operating system, integrated software, any programs embedded, installed or activated on delivered hardware, and modifications of such programs) and Oracle computer documentation or other Oracle data delivered to or accessed by U.S. Government end users are "commercial computer software" or "commercial computer software documentation" pursuant to the applicable Federal Acquisition Regulation and agency-specific supplemental regulations. As such, the use, reproduction, duplication, release, display, disclosure, modification, preparation of derivative works, and/or adaptation of i) Oracle programs (including any operating system, integrated software, any programs embedded, installed or activated on delivered hardware, and modifications of such programs), ii) Oracle computer documentation and/or iii) other Oracle data, is subject to the rights and limitations specified in the license contained in the applicable contract. The terms governing the U.S. Government's use of Oracle cloud services are defined by the applicable contract for such services. No other rights are granted to the U.S. Government.

This software or hardware is developed for general use in a variety of information management applications. It is not developed or intended for use in any inherently dangerous applications, including applications that may create a risk of personal injury. If you use this software or hardware in dangerous applications, then you shall be responsible to take all appropriate fail-safe, backup, redundancy, and other measures to ensure its safe use. Oracle Corporation and its affiliates disclaim any liability for any damages caused by use of this software or hardware in dangerous applications.

Oracle and Java are registered trademarks of Oracle and/or its affiliates. Other names may be trademarks of their respective owners.

Intel and Intel Inside are trademarks or registered trademarks of Intel Corporation. All SPARC trademarks are used under license and are trademarks or registered trademarks of SPARC International, Inc. AMD, Epyc, and the AMD logo are trademarks or registered trademarks of Advanced Micro Devices. UNIX is a registered trademark of The Open Group.

This software or hardware and documentation may provide access to or information about content, products, and services from third parties. Oracle Corporation and its affiliates are not responsible for and expressly disclaim all warranties of any kind with respect to third-party content, products, and services unless otherwise set forth in an applicable agreement between you and Oracle. Oracle Corporation and its affiliates will not be responsible for any loss, costs, or damages incurred due to your access to or use of third-party content, products, or services, except as set forth in an applicable agreement between you and Oracle.

Contents

Preface	i
<hr/>	
1 Introduction	1
Overview	1
Accessing Certifications (Minimum Technical Requirements)	2
Preserved/Replaced UDOs after Upgrading to EnterpriseOne Tools Release 9.2	3
Multi-Foundation Considerations	3
Required Components	4
2 Tasks	5
Required Sequence of Tasks	5
Disabling Security History	6
Backing Up JD Edwards EnterpriseOne Directories and Tables	6
Upgrading or Updating the Server Manager Management Console and Agents	6
Installing Change Assistant	7
Associating Environments with the Enterprise Server	7
Backing Up the Oracle Universal Installer (OUI) Files (Prior to Tools Release 9.2.2.0)	9
Upgrading JD Edwards EnterpriseOne Tools Release 9.2.x	10
Converting the Local Database Encryption with ReconfigureDB.exe	11
Installing the Microsoft Visual Studio Redistributables	12
Installing and Applying the Planner Electronic Software Update (ESU) and Performing Special Instructions	13
Applying the Current EnterpriseOne Tools Application Enhancement ASU and ESUs	13
Building and Deploying the Full Package	15
Running Tools Configuration using Web Application P96ATRC (Tools Release 9.2.7 and later)	15
Implementing Post Installation Tasks	18
3 Appendix A - UDO Table Architecture for 9.2	31
Changed Tables	31
New Tables	31
4 Appendix B - Deploying the ASI Using Change Assistant	33
Deploying the ASI Using Change Assistant	33

5	Appendix C - Table Conversion Schedule	57
	JD Edwards EnterpriseOne Tools Release 9.2 Table Conversions	57
6	Appendix D - ASI Validations	63
	ASI Validations	63
7	Appendix E - Errors and Warnings	65
	Errors and Warnings	65

Preface

Welcome to the JD Edwards EnterpriseOne documentation.

Documentation Accessibility

For information about Oracle's commitment to accessibility, visit the Oracle Accessibility Program website at <http://www.oracle.com/pls/topic/lookup?ctx=acc&id=docacc>.

Access to Oracle Support

Oracle customers that have purchased support have access to electronic support through My Oracle Support. For information, visit <http://www.oracle.com/pls/topic/lookup?ctx=acc&id=info> or visit <http://www.oracle.com/pls/topic/lookup?ctx=acc&id=trs> if you are hearing impaired.

Related Information

For additional information about JD Edwards EnterpriseOne applications, features, content, and training, visit the JD Edwards EnterpriseOne pages on the JD Edwards Resource Library located at:

<http://learnjde.com>

Conventions

The following text conventions are used in this document:

Convention	Meaning
Bold	Boldface type indicates graphical user interface elements associated with an action or terms defined in text or the glossary.
<i>Italics</i>	Italic type indicates book titles, emphasis, or placeholder variables for which you supply particular values.
Monospace	Monospace type indicates commands within a paragraph, URLs, code examples, text that appears on a screen, or text that you enter.
> Oracle by Example	Indicates a link to an Oracle by Example (OBE). OBEs provide hands-on, step-by-step instructions, including screen captures that guide you through a process using your own environment. Access to OBEs requires a valid Oracle account.

1 Introduction

Overview

Supporting every JD Edwards EnterpriseOne installation is a JD Edwards EnterpriseOne Tools Release, which delivers a platform with an innovative user experience, scalability, high performance, security and reliability for the JD Edwards EnterpriseOne application modules. Table conversions are a new part of the JD Edwards EnterpriseOne Tools Release 9.2 upgrade process and are performed through the Automated Special Instructions (ASI).

This guide is valid for all 64- and 32-bit JD Edwards EnterpriseOne Tools Releases 9.2.X. Release specific content is identified within the text. Tools Release 9.2.5 supports Applications Release 9.2 only, while Tools Release 9.2.4 continues to support Applications Release 9.1 and 9.2.

See *JD Edwards EnterpriseOne Tools UX One Deployment and Development Guide* to deploy UX One content and develop Oracle JET components for UX One.

Note: EnterpriseOne Tools Release 9.2.1 contains enhancements to the package build process. All Object Librarian type records are inserted into a database repository. Prior to building a full package, you will need to increase the Central Object database by two gigabytes. For more information, see *JD Edwards EnterpriseOne Tools Package Management Guide*.

Note: If you are implementing Virtual Batch Queues (Release 9.2.5) you must run R986110V|XJDE0001 to clear the Actual Host (F986110.jcfnfuf1) column after you apply the Tools Rollup ESU. You can run the UBE from a development client or web client. The UBE updates the F986110 based on the server maps and only needs to be run once.

64-bit EnterpriseOne Tools Release

Support for 64-bit processing is available with Tools Release 9.2.3 and beyond. To support a flexible adoption two versions are available, 32-bit Tools Release and 64-bit Tools Release. The Enterprise Server and development client are supported for 64-bit processing in Tools Release 9.2.3. Support for upgrading the Deployment Server to 64-bit is available in Tools Release 9.2.4 and beyond. Until you upgrade to a 64-bit Deployment Server and all the associated path codes, 32-bit will be considered the source of truth and all development should be performed on a 32-bit development client.

While it is possible to upgrade to Tools Release 9.2.3 (64-bit) directly, the recommendation is a phased approach. To reduce the number of variables, upgrade to Tools Release 9.2.3 (32-bit) first. Once validated, the upgrade to Tools Release 9.2.3 (64-bit) can then proceed.

Note: *Implementing 64-bit Processing Learning Path for a step by step 64-bit implementation.*

EnterpriseOne Tools Release Support Policy

Refer to the Lifetime Support Policy and Tools Release support policy published on updatecenter.oracle.com.

Tools Release 9.2.3 provides 64-bit processing on the Enterprise Server and Tools Release 9.2.4 provides 64-bit processing on the Deployment Server. Below details the support for 64-bit processing:

- Tool Releases, 9.2.x continue to run on 64-bit operating systems, databases, and web application servers according to the Certifications published on My Oracle Support.
- Enterprise Server foundation systems and business functions that are compiled for either 32-bit or 64-bit processing. See the Implementing 64-bit Processing learning path on LearnJDE for details on implementing 64-bit.
- 64-bit processing is available only for Application Release 9.2.
- 64-bit Tool Releases are available for the following JD Edwards certified platforms (see the Certifications tab on My Oracle Support for current certifications):

Operating System	Database
Oracle Linux	Oracle Database
Microsoft Windows	Microsoft SQL Server and Oracle Database
IBM i on Power Systems	IBM DB2 for i

References

- Oracle Lifetime Support Policy for Oracle Applications
<https://www.oracle.com/us/assets/lifetime-support-applications-069216.pdf>
- Certifications on My Oracle Support
<https://support.oracle.com/epmos/faces/CertifyHome>
- JD Edwards EnterpriseOne 64-bit Processing Frequently Asked Questions (Doc ID 2390692.1)
<https://support.oracle.com/epmos/faces/DocumentDisplay?id=2390692.1>
- EnterpriseOne Tools Releases on the JD Edwards Update Center
<https://updatecenter.oracle.com/apps/WebSearch/updatecenter.jsp?action=news&pkgType=06>

Accessing Certifications (Minimum Technical Requirements)

You can locate the JD Edwards EnterpriseOne Tools Release 9.2 Certifications from My Oracle Support.

To access JD Edwards EnterpriseOne Tools Release 9.2 Certifications:

1. Navigate to My Oracle Support.

<https://support.oracle.com>

2. Click the Certifications tab.
3. Search for JD Edwards EnterpriseOne Tools Release 9.2.

Note: JD Edwards EnterpriseOne Tools Release 9.2.x is compatible with JD Edwards EnterpriseOne Applications 9.0 and forward.

Preserved/Replaced UDOs after Upgrading to EnterpriseOne Tools Release 9.2

Upgrading to EnterpriseOne Tools Release 9.2.x preserves all custom UDOs that are shared. Modification rules for specific UDOs are:

- Unused CAFE1 content are not preserved
- All personal UDO's will be preserved if not checked out
- EnterpriseOne Pages classified as *PUBLIC and LineType 0 will be preserved

Upgrading to EnterpriseOne Tools Release 9.2.0.5 adds the following UDOs:

- Image
- Composite

Upgrading to EnterpriseOne Tools Release 9.2.1 adds the following UDOs:

- Personalized Form
- Orchestration
- Rule
- Service Request
- Whitelist
- Cross Reference

Multi-Foundation Considerations

As a best practice, you should always set up multiple EnterpriseOne Tools Release foundations, including a test environment for applying EnterpriseOne Tools Release fixes. This helps ensure that a stable environment exists before you promote fixes to your production environment. You can also use this same principle and procedure to set up multiple foundations of major EnterpriseOne Tools Releases, such as EnterpriseOne Tools Release 9.1.x and EnterpriseOne Tools Release 9.2.x.

See *"Working with Multiple Tools Release Foundations" in the JD Edwards EnterpriseOne Deployment Server Reference Guide for Enterprise Systems for Microsoft Windows* .

Note: If you have more than one EnterpriseOne Enterprise Server sharing the same F98OWSEC table, you have to update all of them to EnterpriseOne Tools 9.1 Update 3 to support one-way hash encryption. In order to properly connect and use few foundations with different encryptions, a security split has to be done in the system. See Special Instructions for Multiple Enterprise Servers Sharing the Same F98OWSEC Table in the JD Edwards EnterpriseOne Tools Security Administration Guide.

Required Components

There are required components necessary for a successful installation and configuration of the JD Edwards EnterpriseOne Tools Release 9.2.x with the JD Edwards EnterpriseOne Applications 9.0, 9.1 and 9.2 Releases. You can view the required components on My Oracle Support - Required Components for JD Edwards EnterpriseOne Release 9.2 (Doc ID 2054020.1).

For resources to support your EnterpriseOne Tools upgrade, see the "*EnterpriseOne Tools Only Upgrade 9.2*" content on www.LearnJDE.com.

2 Tasks

Required Sequence of Tasks

The following list presents the mandatory sequence of tasks necessary to upgrade to JD Edwards EnterpriseOne Tools Release 9.2.x:

1. Disabling and Enabling Security
2. Backing Up JD Edwards EnterpriseOne Directories and Tables
3. Upgrading or Updating the Server Manager Management Console and Agents

Note: As of JD Edwards EnterpriseOne Tools Release 9.2.x, you must install a Server Manager Agent on the Deployment Server.

4. Installing Change Assistant
5. Associating Environments with the Enterprise Server
6. Backing Up the Oracle Universal Installer (OUI) Files

Note: Upgrading the OUI is only required for JD Edwards EnterpriseOne Tools Release 9.2.2.x and later.

7. Upgrading JD Edwards EnterpriseOne Tools Release 9.2.x

Note: As of JD Edwards EnterpriseOne Tools Release 9.2.x, you install the EnterpriseOne Tools Release through Server Manager.

8. Converting the Local Database Encryption with ReconfigureDB.exe
9. Installing the Microsoft Visual Studio C++ 2010 Runtime X86 Redistributables

For the Tools Release 9.2.3, you must install Microsoft Visual Studio C++ 2017 Redistributables and Visual Studio C++ 2010 Redistributables are not required.

For the Tools Release 9.2.9, you must install Microsoft Visual Studio C++ 2017 and 2022 latest Redistributables. Microsoft includes Redistributable packages from Visual Studio 2015 to 2022 in the bundle, allowing for the installation of a single package. The recommendation is to install both the 32-bit and 64-bit.

10. Installing and Applying the Planner Electronic Software Update (ESU) and Performing Special Instructions
11. Applying the Current EnterpriseOne Tools Application Enhancement ASU and ESUs
12. Building and Deploying the Full Package
13. Run P96ATRC to make changes to OCM, database
14. Implementing Post Installation Tasks

Note: Following the above sequence is mandatory to upgrade to JD Edwards EnterpriseOne Tools Release 9.2.x.

Disabling Security History

You must disable the security history in the `jde.ini` file on the Security Server before you execute the ASI. Once the ASI has executed successfully you can enable the security history. The [SECURITY] section in the `jde.ini` file on the Security Server must include the `History=0` prior to the initial execution of the ASI.

Backing Up JD Edwards EnterpriseOne Directories and Tables

The EnterpriseOne Tools Release download replaces the System directory and its subdirectories on the Deployment Server. Therefore, before you begin you should make a backup of the existing directory structure.

On the Deployment Server, make a copy of these directories:

- /System
- /Systemcomp
- /OneWorld Client Install

It is also recommended to back up the JD Edwards EnterpriseOne tables. Follow the JD Edwards EnterpriseOne backup procedures.

See *"Backing Up JD Edwards EnterpriseOne Tables" in the JD Edwards EnterpriseOne Administration Guide* .

Upgrading or Updating the Server Manager Management Console and Agents

You run the Server Manager Management Console installer in Upgrade mode if upgrading from one major Tools Release level to another, for example 8.98.x to 9.1.x. The installer detects if an existing installation exists and provides the option to upgrade that installation to the latest version that is compatible with the current EnterpriseOne Tools Release. If upgrading to revisions within a major release you can update the Console, for example upgrading from 9.1.2 to 9.1.2.4.

When upgrading to Tools Release 9.2.3x and later you must install Visual Studio 2017 redistributables before upgrading or updating the console and agents. The recommendation is to install both the 32-bit and 64-bit redistributables.

To upgrade or update Server Manager Console:

1. Obtain the latest EnterpriseOne Tools 9.2.x version of the Server Manager Management Console or update from the *Oracle Software Delivery Cloud*.
2. Verify the Management Console is stopped.
3. Upgrade or update the Server Manager Console.
4. Install an Agent on the Deployment Server, if not already installed.
5. Use the standard functionality to obtain and run the updates for the Server Manager Agents on the target machines.

See *"Working with the Server Manager Management Console" in the JD Edwards EnterpriseOne Tools Server Manager Guide* .

Configuring Server Manager with Java 8 Update 201 and Later (Release 9.2.3.4)

If you are using Server Manager with Java 8 Update 201 and later (and equivalent Java 7 releases), you must perform the manual steps as described in *"Configuring Server Manager Console with Java 8 Update 201 (and later) (Release 9.2.3.4)" in the JD Edwards EnterpriseOne Tools Server Manager Guide* .

If you performed the configuration changes specified in the My Oracle Support document: Console Not Communicating With Agent And/Or Runtime Metrics Not Displaying After AS400 / iSeries / IBM Java Update Disables 3DES_EDE_CBC Algorithm (Doc ID 2256869.1), you must revert the modifications prior to performing the new manual steps.

Installing Change Assistant

The JD Edwards EnterpriseOne and World Change Assistant is a standalone Java application that helps you manage, download, and deploy JD Edwards EnterpriseOne packages. Change Assistant provides a single point of entry to facilitate administration of software updates and fixes.

You must install Visual Studio 2017 redistributables. The recommendation is to install both the 32-bit and 64-bit.

To install Change Assistant:

1. Obtain Change Assistant from the Oracle JD Edwards EnterpriseOne *Update Center*.
You can access the Update Center by using the following navigation from My Oracle Support:
My Oracle Support | Patches & Updates tab | JD Edwards
2. Select Electronic Software Updates from the News and Links pane on the left.
3. Click the Download the Change Assistant Application link on the Update Center, Electronic Software Updates web page.
4. The JD Edwards EnterpriseOne and World Change Assistant page opens providing information about Change Assistant features.
5. Click the link in the Change Assistant section to install and launch Change Assistant.

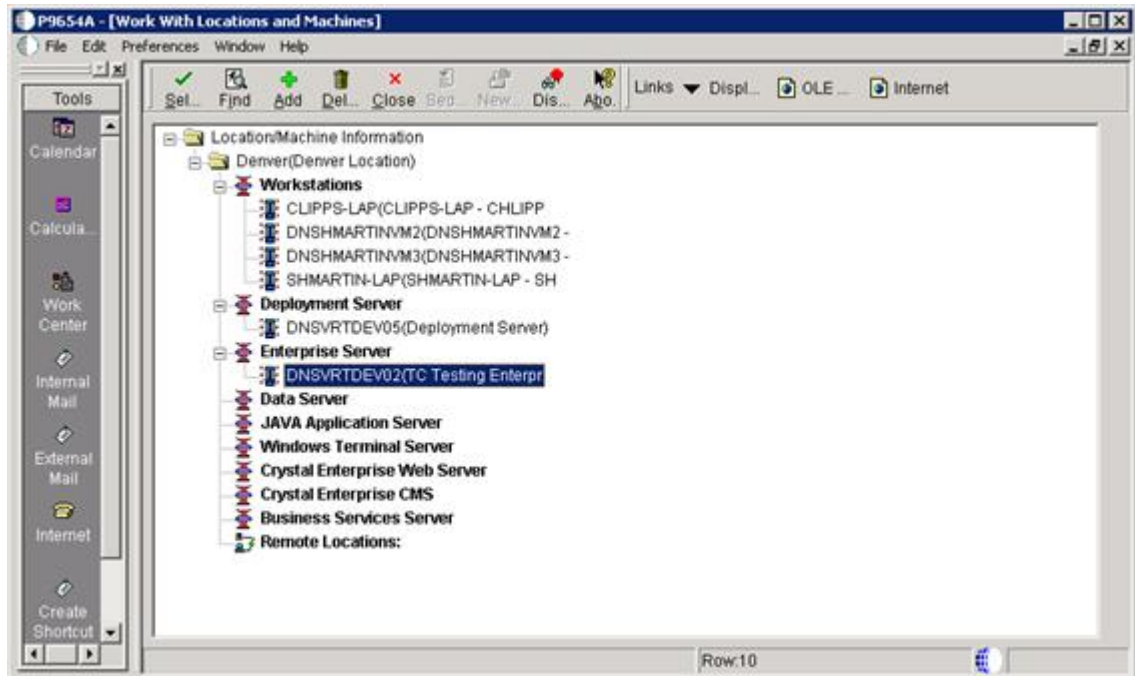
See *"Using Change Assistant" in the JD Edwards EnterpriseOne Tools Software Updates Guide* .

Note: JD Edwards EnterpriseOne Tools Release 9.2.2.x requires Change Assistant version 4.0.0.4 or above.

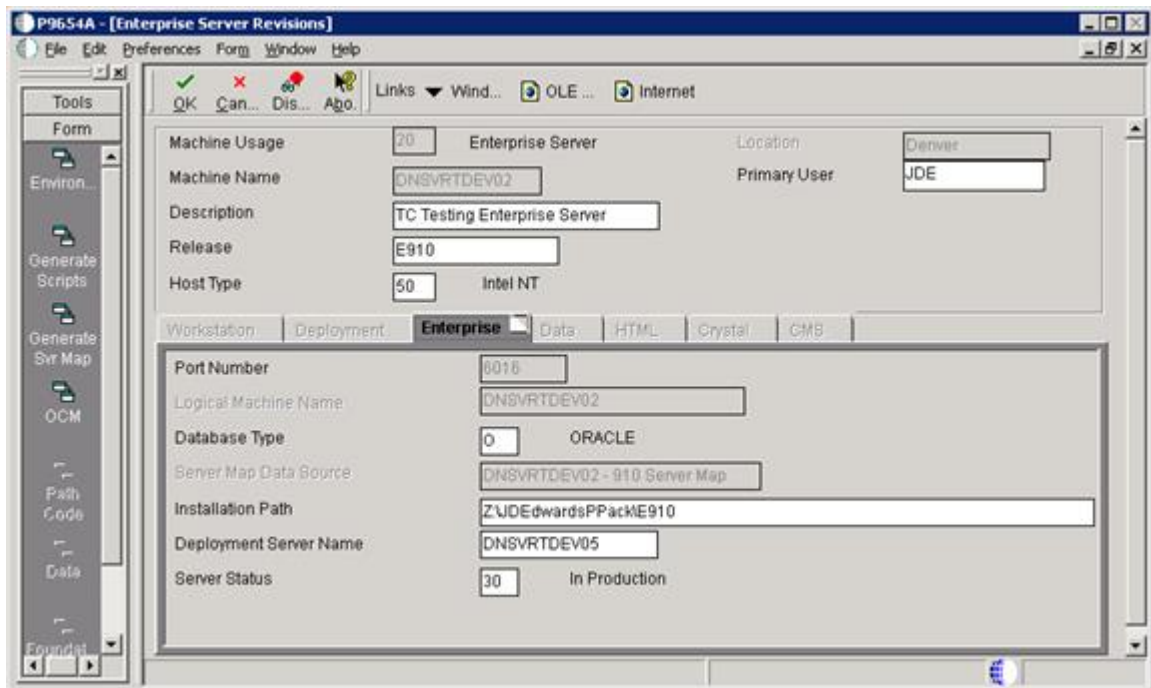
Associating Environments with the Enterprise Server

You associate environments with the Enterprise Server to automate the server map Object Configuration Manager (OCM) generation during the upgrade process.

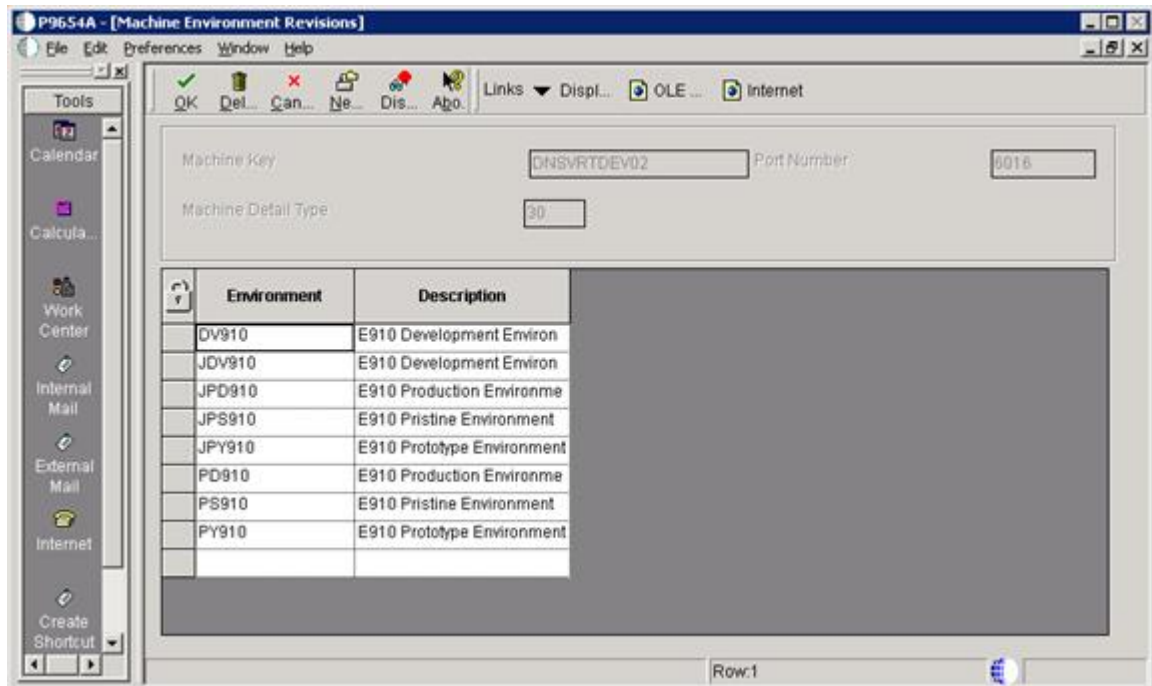
1. Log in to the JDEPLAN environment on the Deployment Server.
2. Run the Work with Locations and Machines (P9654A) application.



3. Expand the Enterprise Server node and select your Enterprise Server.



4. Click Environments on the Form menu.



5. Add all environments associated with the path code you are upgrading on the Enterprise Server.
6. Click OK and restart JD Edwards EnterpriseOne.

Backing Up the Oracle Universal Installer (OUI) Files (Prior to Tools Release 9.2.2.0)

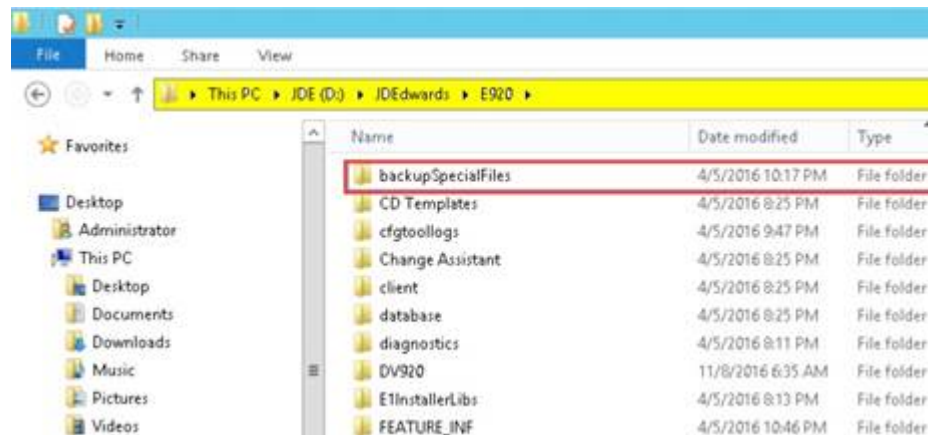
The installation of the Development Client and H4A (WLSH4A and WASH4A) is accomplished using OUI 12.2.0.6.0.

Note: This is required for JD Edwards EnterpriseOne Tools Release 9.2.2.x and later and must be performed before upgrading the Tools Release on the Deployment Server.

To back up the OUI files:

1. Navigate to : <E1_dep_svr_install_directory>
2. Rename the install and stage subdirectories under these three locations:
 - o ..\OneWorld Client Install
 - o ..\OneWorld Client Install\ThirdParty\WebDevFeature\WLSH4A
 - o ..\OneWorld Client Install\ThirdParty\WebDevFeature\WASH4A

3. Rename <E1_dep_svr_install_directory>\backupSpecialFiles



Upgrading JD Edwards EnterpriseOne Tools Release 9.2.x

You locate information on fixes and enhancements in JD Edwards EnterpriseOne Tools Release 9.2.x through the Oracle Product Features, which you can access from www.LearnJDE.com.

Note: When you upgrade a JD Edwards EnterpriseOne Tools Release, ensure that the requisite JDK on the Enterprise Server and the Deployment Server meets the version requirements as specified in Oracle Certifications. If you need to upgrade the JDK, you should do so before you use Server Manager to deploy the new JD Edwards EnterpriseOne Tools Release. If an upgraded JDK version is applied on the target machine, it must be manually copied to the ..\system\jre folder on the Enterprise Server and Deployment Server for use by the Tools Release for JD Edwards EnterpriseOne.

To upgrade the latest EnterpriseOne Tools Release:

1. Obtain the latest JD Edwards EnterpriseOne Tools Release from the Oracle JD Edwards EnterpriseOne Update Center.
2. Download the latest JD Edwards EnterpriseOne Tools Release .par files for the appropriate server:
 - o Deployment Server
 - o Enterprise Server
 - o HTML Server
 - o AIS Server
3. Using Server Manager Console upload the par files and distribute.
4. Using Server Manager Console change the software component version for the server instance.

See *"Installing an EnterpriseOne Tools Release on the Deployment Server"* in the *JD Edwards EnterpriseOne Deployment Server Reference Guide* for your platform.

Note: *JD Edwards EnterpriseOne Tools Server Manager Guide* and *JD Edwards EnterpriseOne HTML Server Reference Guide* for your platform.

Converting the Local Database Encryption with ReconfigureDB.exe

Deployment Servers and Development Clients (Prior to Tools Release 9.2.5.0) connects to the local Oracle database known as E1Local using the “SYSTEM” and “SYS” database accounts. EnterpriseOne generates and then encrypts a password each time it initializes a connection to this database. In Tools Release 9.2.0.0, the algorithm used to generate and encrypt the password was changed. Therefore, if you are upgrading from a Tools Release prior to 9.2.0.0, you need to reset the database password using the following steps.

Note: Starting with Tools Release 9.2.5.0, Development Clients do not use E1Local; however, Deployment Servers continue to use it.

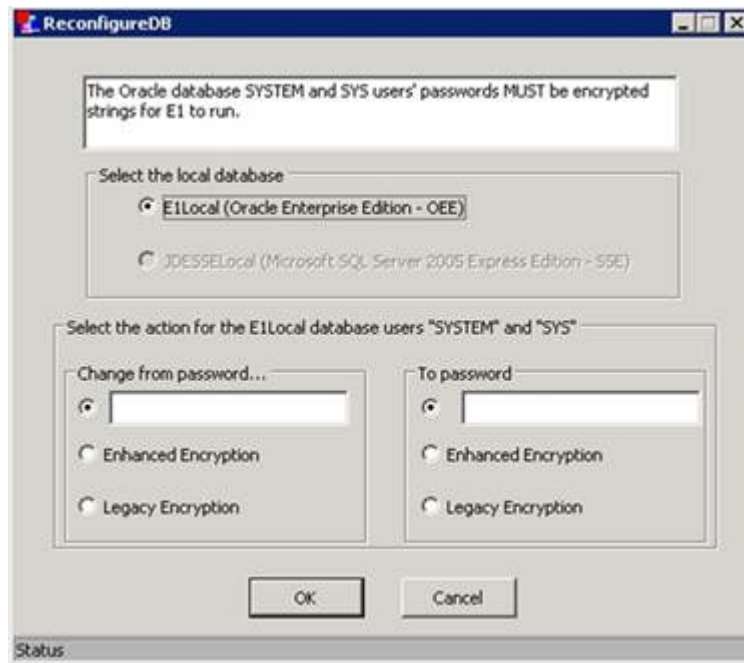
Note: The procedure in this section applies only to the Oracle database called E1Local (also known as Oracle Enterprise Edition or OEE) installed on the Deployment Server and each of the Development Clients.

The encryption used prior to Tools Release 9.2.0.0 is known as “Legacy” encryption. The new encryption introduced with Tools Release 9.2.0.0 is termed “Enhanced” encryption.

The program ReconfigureDB.exe can change the EnterpriseOne local database between the two types of encryption and a plain-text string. Setting the password to a plain-text string allows an EnterpriseOne administrator to perform any required actions on the local database.

Note: For Tools Release 9.2.0.0 and later, the password must be set to Enhanced Encryption. If it is not set, any attempts to log into EnterpriseOne running on the Deployment Server or Development Client will fail. If you change it from Enhanced Encryption to any other password (either a text string or Legacy Encryption), be sure to change it to Enhanced Encryption before trying to run EnterpriseOne.

1. Run ReconfigureDB.Exe



2. In the Change from password... area, select Legacy Encryption.
3. In the To password area, select Enhanced Encryption.
4. Click OK
5. Confirm the password change.
6. Click Cancel to exit.

Installing the Microsoft Visual Studio Redistributables

All JD Edwards EnterpriseOne Windows machines receiving application foundation packages built with Microsoft Visual C++ 2010 or higher require the runtime libraries to be installed. For example, the Microsoft Visual C++ 2010 Redistributable Package (vcredist_x86.exe) installs runtime components of Visual C++ required to run applications developed with Visual C++ on a computer that does not have Visual C++ 2010 compiler installed.

You must download and install the Microsoft Visual Studio C++ 2010 Redistributable Package (x86).

For Tools Release 9.2.3, you must download and install the Microsoft Visual Studio C++ 2017 Redistributable Package.

For Tools Release 9.2.9, you must download and install the Microsoft Visual Studio C++ 2017 and 2022 Redistributables. Microsoft includes Redistributable packages from Visual Studio 2015 to 2022 in the bundle, allowing for the installation of a single package. The recommendation is to install both the 32-bit and 64-bit.

The Redistributable Packages can be downloaded from here:

<https://learn.microsoft.com/en-us/cpp/windows/latest-supported-vc-redist?view=msvc-170>

1. At the top of the page, click the link for the version of Visual Studio required.
2. Click the link that contains "x64" for 64-bit EnterpriseOne.
3. Click the link that contains "x86" for 32-bit EnterpriseOne.
4. Run the downloaded file.

Installing and Applying the Planner Electronic Software Update (ESU) and Performing Special Instructions

Note: You can view the required components on My Oracle Support - [Required Components for JD Edwards EnterpriseOne Release 9.2 \(Doc ID 2054020.1\)](#).

Note: Detailed instructions can be found in the [Software Updates Guide](#).

The Planner ESU contains special features that update the specifications and Dynamic Link Libraries (DLL) in the Planner path code. The Planner ESU distributes enhancements and fixes to the EnterpriseOne objects (applications, forms, or batch versions). Planner ESUs have a .htm file that contains the Special Instructions for the software update. You will find the .htm file in the extracted directory for the Planner ESU.

To install Planner ESU:

1. Obtain the Planner ESU from the Oracle JD Edwards EnterpriseOne [Update Center](#).
2. Click on Electronic Software Updates link in the News and Links section on the left-hand side of the screen.
3. On the Electronic Software Updates main page, you will see a section marked Planner ESUs. Under the documentation links for Planner ESUs are links to the Planner ESUs, listed by EnterpriseOne application Release.
4. Click the Get It Now link for the appropriate JD Edwards EnterpriseOne Application Release to be taken directly to the download for the Planner ESU.
5. (Tools Release 9.2.7.0 and later) Use steps in the section [“Running Software Updates” in the JD Edwards EnterpriseOne Tools Software Updates Guide](#) to install the Planner ESU through a Web client.
6. (Prior to Tools Release 9.2.7.0) Use these steps to install the Planner ESU on the Deployment Server.
 - a. Download to the Deployment Server.
 - b. Run the self-extracting executable and follow the on-screen instructions to install the Planner ESU on the Deployment Server.
 - c. Follow the steps in the Special Instructions, which are contained within an HTML file in the extracted Planner ESU directory.

Note: It is recommended to apply the planner ESU to the path code that the ASI will be deployed to.

See [“Running Software Updates” in the JD Edwards EnterpriseOne Tools Software Updates Guide](#) .

Applying the Current EnterpriseOne Tools Application Enhancement ASU and ESUs

Note: You can view the required components on My Oracle Support - [Required Components for JD Edwards EnterpriseOne Release 9.2 \(Doc ID 2054020.1\)](#).

Note: The 9.2.x EnterpriseOne Tools Application Enhancement for Application Release 9.0 is an ASU for the Initial Release. ASUs cannot be deployed using Change Assistant.

To install the current Application Enhancement ASU:

Note: This applies to JD Edwards EnterpriseOne Application Release 9.0 only.

Note: The 9.2.x EnterpriseOne Tools Application Enhancement for Application Release 9.0 is an ASU for the Initial Release. ASUs cannot be deployed using Change Assistant.

1. Obtain the current Application Enhancement ASU from the Oracle JD Edwards EnterpriseOne *Update Center*.
2. Search and download the latest ASU, using JD Edwards EnterpriseOne for the search Type.
 - o UDOE90* - Management of User Defined Objects ASU for E1 EnterpriseOne Tools 9.2
3. (Tools Release 9.2.7.0 and later) Use steps in the section *“Running Software Updates” in the JD Edwards EnterpriseOne Tools Software Updates Guide* to install ESUs through a Web client.
4. Use these steps to install the Planner ESU on the Deployment Server.
 - a. Verify all JD Edwards EnterpriseOne processes are exited.
 - b. Copy the ASU to the Deployment Server.
 - c. Run the executable as Administrator.

This will uncompress the contents of the ASU and prepare them for deployment through the JD Edwards EnterpriseOne Work with Software Updates.

- d. Open JD Edwards EnterpriseOne and launch JD Edwards EnterpriseOne Work with Software Updates (P96470), which you can access through menu GH9612- Run Application Software Updates.
- e. Select the latest UDOE90* grid row by double-clicking the row header.
- f. Click the Next button and follow the prompts to complete deployment.

To install the EnterpriseOne Tools ESUs:

1. Search, download, and deploy the ESU (and any dependencies) associated with the appropriate bug from the following table:

Application Release	Bug
9.2	24710277
9.1	25980269
9.0	21902097

Note: After installing the ESUs, apply the DD glossary and UDC description changes. See: *JD Edwards EnterpriseOne Software Updates Guide; Section 8.3 JD Edwards Visual Compare for UDC Descriptions and Glossary Tool*.

Building and Deploying the Full Package

Note: After deploying the Full Package, delete the OCM mappings for B96712 and B967121 for all environments for this path code. Then bounce services using the Server Manager Console.

Note: Prior to building a full package you will have to increase the Central Object database by two gigabytes.

EnterpriseOne Tools Release 9.2.1.x and above, contains enhancements to the package build process. All Object Librarian type records are inserted into a database repository. The object types inserted are:

- Business Functions (BSFN and NER)
- Table (TBLE)
- Applications (APP)
- Reports (UBE)
- Data Structure (DSTR)
- Business Views (BSVW)
- Media Objects (GT)
- Business Services(SBF)

Every object will have a record with a .par file in the Repository table (F98780R) and the History table (F98780H). Both tables are located in the Central Objects data source.

For more information see *"Building Packages" in the JD Edwards EnterpriseOne Tools Package Management Guide*.

Running Tools Configuration using Web Application P96ATRC (Tools Release 9.2.7 and later)

This option is available with Tools Release 9.2.7 and later, on Apps Release 9.2 only. The Web Application was shipped in Tools Rollup containing the Bug 35098166. If you are in Tools Release 9.2.6 or earlier, the Web Application shows an error.

Note: This new process does not update the Deployment Server. If you installed your servers from the original 9.2 generally available software distribution (GA CDs), and you have not previously run TL92*, you still need to run the ASI TL927001 against any environment in order to get the needed changes on the Deployment Server to support Long DB user and password. You must run P96ATRC against the same environment as TL927001 to include the actions for Tools 9.2.8 and above as TL927001 only includes actions up to Tools 9.2.7.

Note that this new process does NOT update the Deployment Server. If you installed your servers from the original 9.2 generally available software distribution (GA CDs), and you have not previously run TL92*, you still need to run the ASI TL927001 to do normal CNC processes on the Deployment Server. TL927001 only includes actions up to Tools 9.2.7. P96ATRC contains all those actions plus the actions for Tools 9.2.8 and above.

Perform the following steps to run Tools Configuration:

1. Before you run P96ATRC, complete the steps in the Planner Update Special Instructions to set up the owners / tablespaces for the new JDEP920 environment. The database scripts are delivered in the Planner Update under `x:\JDEdwards\E920\planner \package\JNxxxx\scripts\Create_DB_For_Web_Deploy.zip`
2. Ensure that you have Security Overrides in place for System, Object Librarian, Data Dictionary, Central Objects, Control Tables and Business Data for your target environment. See the documentation for adding Security Overrides for Package Build as an example. See *Understanding Security Overrides for Package Build*
3. Perform the same steps for the owners of Control Tables, that is TESTCTL, CRPCTL, PRODCTL.

Deploy latest Tools Release on Enterprise Server

Install latest Tools Rollup and Planner Update:

Deploy ESUs, build and deploy a package:

35098166 – Tools Rollup

35397151 – UDOs for JET page

35490165 – Planner Update

Run P96ATRC from a Web client that has the above ESUs applied.

1. Choose the ATRC Status layout.
2. Enter your unique suffix for any new UDOs delivered with this Tools Release.
3. Select the target environment(s).
4. Click Submit to create a new Schedule (and ignore any previous run of this App), or Restart to run only the steps that have not been completed successfully.

Personal Form: (No Personalization) Layout: ATRC Status

Work With Automated Tools Release Schedule TR9280

Submit Restart Form Tools

Default Values

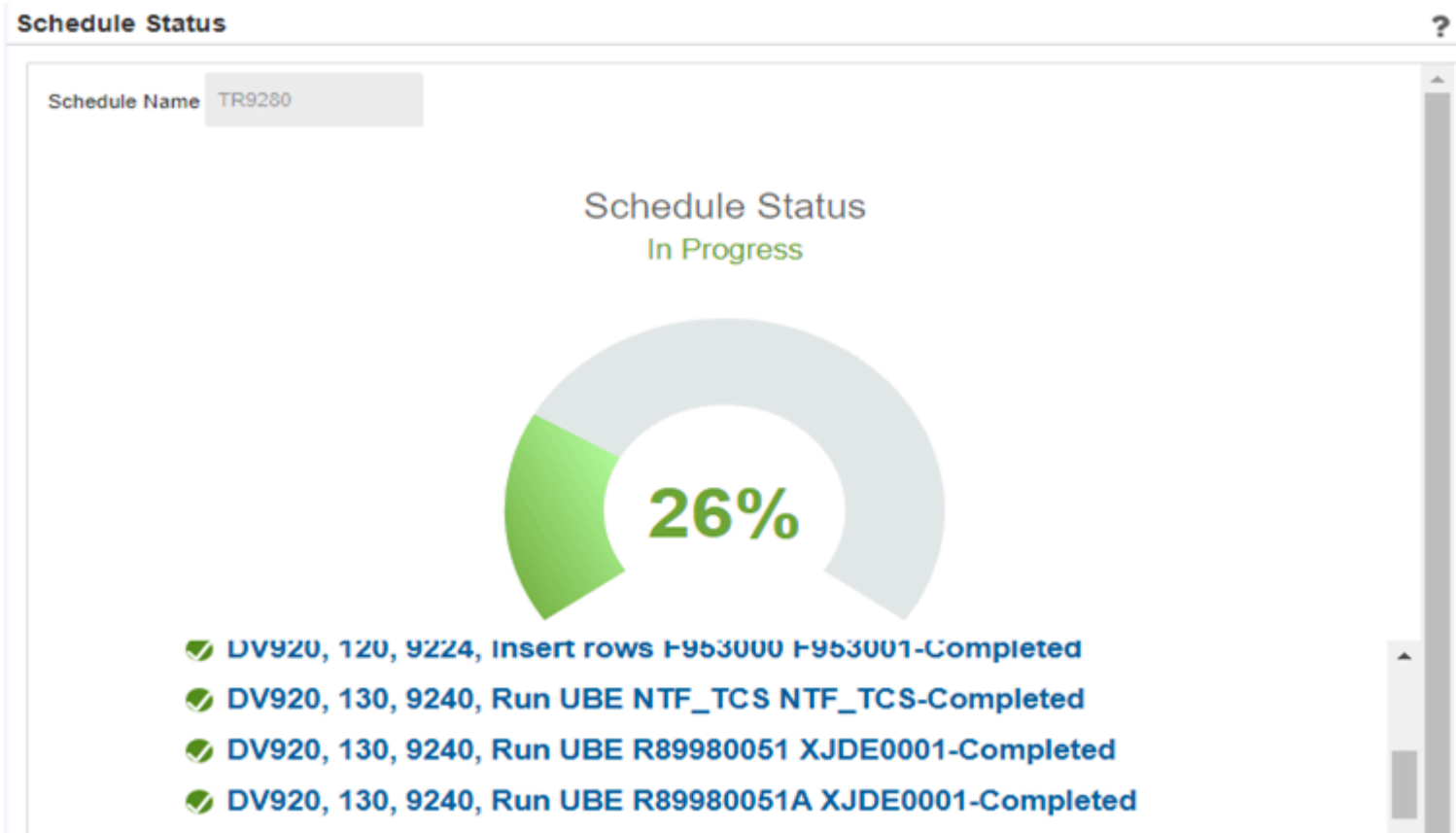
Suffix for new UDOs: CUST

Environment	Description	Path Code	Status
<input checked="" type="checkbox"/> DV920	E920 Development Environment	DV920	In Progress
<input type="checkbox"/> DV92TCLX	E920 FAT Env DV - TC	DV920	In Progress
<input type="checkbox"/> PD920	E920 Production Environment	PD920	In Progress

Schedule Name: TR9280

Selected Environments: DV920

The JET page shows the status of all the steps.



When the scheduled job is complete, check the submitted jobs. It runs 3 UBEs (R9860A, R986110V, R98403G XJDE0003). Each of these will have a separate R96ATRC pdf showing success or failure.

R96ATRC	Worldwide Company
	Run UBE or TC and update
	F9881 with result
Schedule	TR9280
Target Environment	DV920
Sequence Number	370.00
Report Name	R98403G Version XJDE0003
Success	

It also checks the status of the Notifications tables F980051 F9890052 F980053 in Control Tables and determines which of the Notification TCs need to run. These are all reported in one R96ATRC pdf.

Note: Verify the F00165 table in Business Data has the F00165_5. If this does not exist, run the R9698713 UBE which will generate missing indexes.

Note: [Click here to view a recording of this feature.](#)

Implementing Post Installation Tasks

Uploading Existing Media Objects to the Database

Starting with EnterpriseOne Tools Release 9.2.1 it was mandatory to store media objects to the database. In EnterpriseOne Tools Release 9.2.1.4 and beyond, you have the option to store media objects to the file system.

This UBE only needs to be run once.

To insert existing media objects to the database:

1. Run R98MODAT UBE to insert existing media objects to the database (personal and shared).

Note: By default, JD Edwards EnterpriseOne will store media objects to the database.

See *"Uploading Media Object Files to Database" in JD Edwards EnterpriseOne Tools Runtime Administration Guide* and Oracle Support document #2295043.1.

Generate Index (Release 9.2.3.2)

A new index is added to F00165 to support new functionality. Run R9698713 to create the F00165_5 index in F00165.

To generate the index on F00165:

1. Log into JDEPLAN on the Deployment Server.
2. Execute Batch Versions and search for R9698713.
3. Change the Data Selection to F00165.

4. Change the Processing Options to:

Processing Options [X]

Options

R9698713 creates missing and mismatch indexes for each table identified by data selection.

1. Enter the name of the Environment.
(If the data source is blank all tables for this environment are included in the verification.)

2. or Enter the name of the Data Source.
(If both environment and data source are provided, only the tables which are mapped to this data source for the given environment are verified.)

3. Enter '0' for Proof mode, or '1' to recreate all the indexes on selected tables if any missing or mismatch indexes, or '2' to create only the missing and mismatch indexes on selected tables. (The default is proof mode.)

4. Enter '0' for a summary report of tables with invalid indexes or '1' to print all tables. (The default is to skip tables with correct indexes.)

5. Click OK.

Run this against the Business Data for each of your environments that are on Tools Release 9.2.3.2 and above.

Associating Converted UDOs with Default Projects.

To associate converted UDOs to default projects:

Note: For the UBE to run properly, you must set the external role for users outside OMW to 02-Developer. You do this by clicking on the Constants icon in the P98230 application.

1. Run UBE R98222UDO/XJDE0001 from a web client to add converted objects to default projects.

R98222UDO performs the necessary steps to create the default project for the personal objects and corresponding records so that the end user can make modifications to their personal objects.

The UBE runs over the F9861W table and checks if the object exists in any current project. If the object exists, that information is written to the report and nothing is done with the object.

If the object does not yet exist in a project, the UBE will:

Check if the default project for the user who created the object exists.

If it does not exist:

Create the default project; add the user as a developer and originator.

If it does exist:

Check if the user has the role of developer or originator and add accordingly.

Add the object to the default project.

Update the Object Management Workbench (OMW) object record to indicate that this object is checked out to the default project.

2. For end users to be able to view, create, and modify UDOs, you must confirm setup of Allowed actions. New OMW actions for new UDOs are shipped with the ASI. The security works tightly with OMW allowed actions, which you must set up prior to creating security records. The OMW allowed actions are:
 - a. Copy (06)
 - b. Reserve (03) - checkout
 - c. Delete (04)
 - d. Add (05)
 - e. Remove from Project (12)
 - f. Add Object to Project (16)
 - g. Remove Reservation (30) - erase checkout

See [JD Edwards EnterpriseOne Tools Object Management Workbench Guide](#) and [JD Edwards EnterpriseOne Tools Security Administration Guide](#) .

 - h. In order to transfer a UDO from one path code to another, you must confirm the transfer activity rules in Object Management Configuration (OMC). You setup these transfer activity rules as you would for a regular Object Librarian object (i.e. APPL) with the source and target path codes.

Updating the Oraparam.ini files

Note: When updating to a Tools Release prior to 9.2.1.x, no steps other than applying the Tools Release via Server Manager are required.

The Tools upgrade process does not update the oraparam.ini files for the Development Client installer, WebLogic H4A (WLSH4A) installer, and WebSphere H4A (WASH4A) installer. You must perform the steps below to update the oraparam.ini files. Different steps are required if you are updating to Tools Release 9.2.1.x or 9.2.2.x or later.

Follow the steps relevant to your release.

Configuring the oraparam.ini for the Development Client Installer

The Development Client installer for Tools Releases prior to 9.1 used an installer framework called Exemplar. Installation parameters for Exemplar-based installers were stored in a file called `install.inf`. When the installer was migrated to use Oracle Universal Installer (OUI) with Tools Release 9.1, the installation parameters were moved to the `oraparam.ini` file.

When updating a Deployment Server to Tools Release 9.2, the `oraparam.ini` file is not updated from the existing `install.inf` file (for Exemplar-based installers) or `oraparam.ini` file (for OUI-based installers prior to Tools Release 9.2.3.4). In those cases, you must manually update some settings in the Tools Release 9.2 `oraparam.ini` file as described in this section.

Starting with Tools Release 9.2.3.4, Server Manager performs most of the updates to the `oraparam.ini` file automatically when updating from Tools Releases 9.2.0.0 and later. However, some initial settings must be configured. Those are documented below.

This `oraparam.ini` file resides with the OUI executable called `setup.exe` in this directory:

```
<E1_dep_svr_install_directory>\OneWorld Client Install\install
```

The `oraparam.ini` file follows the standard format of ini files for Microsoft Windows: it contains sections with names inside square brackets ([]) and key/value pairs. The keys and their values are separated by equals signs (=).

Editing the Initial oraparam.ini for the Development Client Installer

When a Deployment Server is first installed, some settings in the Development Client's `oraparam.ini` must be configured manually using the steps in the Deployment Server Reference Guide.

Editing the oraparam.ini for the Development Client Installer During an Update or Upgrade

Prior to Tools Release 9.2.3.4, you must update the `oraparam.ini` for the Development Client installer using the following steps.

Starting with Tools Release 9.2.3.4, Server Manager automatically performs the following steps when updating or upgrading the Deployment Server to a new Tools Release:

1. Navigate to this directory:

```
<E1_dep_svr_install_directory>\OneWorld Client Install\install
```
2. Make a backup copy of `oraparam.ini`.
3. Edit the `oraparam.ini` and set the values from the below table based on the Tools Release:

TOOLS RELEASE	OUI_VERSION	BOOTSTRAP_COMPS
9.2.9 and later	12.2.1.6.0	"oracle.swd.oui:12.2.1.6.0,oracle.swd.oui.core:
9.2.3.4 and later	12.2.0.6.0	"oracle.swd.oui:12.2.0.6.0,oracle.swd.oui.core:
9.2.3.3	12.2.0.9.0	"oracle.swd.oui:12.2.0.9.0,oracle.swd.oui.core:
9.2.2.6 and later	12.2.0.2.2	"oracle.swd.oui:12.2.0.2.2,oracle.swd.oui.core:
Prior to 9.2.2.6	11.2.0.2.0	"oracle.swd.oui:11.2.0.2.0,oracle.swd.oui.core:

Note: The version of OUI decreased with Tools Release 9.2.3.4.

4. Save the `oraparam.ini` file.

Note: As noted in the table, the versions of the JRE or JDK that are provided with the Development Client installer may not be the latest versions available. See *Updating the JRE/JDK Used by the Installers* in the *Deployment Server Reference Guide*.

Updating the `oraparam.ini` for the WLSH4A Installer (Tools Releases Prior to 9.2.9)

If you are not using WLSH4A, skip this section.

Prior to Tools Release 9.2.3.4, you must update `oraparam.ini` for the WLSH4A installer using the following steps.

Starting with Tools Release 9.2.3.4, Server Manager automatically updates `oraparam.ini` for the WLSH4A installer when updating or upgrading the Deployment Server to a new Tools Release.

1. Navigate to this directory:

```
<E1_dep_svr_install_directory>\OneWorld Client Install\ThirdParty\WebDevFeature\WLSH4A\install
```

2. Make a backup copy of `oraparam.ini`.

3. Edit the `oraparam.ini` and set the values from the below table based on the Tools Release:

TOOLS RELEASE	OUI_VERSION	BOOTSTRAP_COMPS
9.2.3.4 and later	12.2.0.6.0	"oracle.swd.oui:12.2.0.6.0,oracle.swd.oui.core
9.2.3.3	12.2.0.9.0	"oracle.swd.oui:12.2.0.9.0,oracle.swd.oui.core
9.2.2.6 and later	12.2.0.2.2	"oracle.swd.oui:12.2.0.2.2,oracle.swd.oui.core
Prior to 9.2.2.6	11.2.0.2.0	"oracle.swd.oui:11.2.0.2.0,oracle.swd.oui.core

Note: The version of OUI decreased with Tools Release 9.2.3.4.

4. Save the `oraparam.ini` file.

Note: As noted in the table, the versions of the JRE or JDK that are provided with the Development Client installer may not be the latest versions available. See *Updating the JRE/JDK Used by the Installers* in the *Deployment Server Reference Guide*.

Updating the `oraparam.ini` for the WASH4A Installer (Tools Releases Prior to 9.2.9)

If you are not using WASH4A, skip this section.

Prior to Tools Release 9.2.3.4, you must update `oraparam.ini` for WASH4A installer using the following steps.

Starting with Tools Release 9.2.3.4, Server Manager automatically updates `oraparam.ini` for WASH4A installer when updating or upgrading the Deployment Server to a new Tools Release.

1. Navigate to this directory:

```
<E1_dep_svr_install_directory>\OneWorld Client Install\ThirdParty\WebDevFeature\WASH4A\install
```

2. Make a backup copy of `oraparam.ini`.

3. Edit the `oraparam.ini` and set the values from the below table based on the Tools Release:

TOOLS RELEASE	OUI_VERSION	BOOTSTRAP_COMPS
9.2.3.4 and later	12.2.0.6.0	"oracle.swd.oui:12.2.0.6.0,oracle.swd.oui.core

9.2.3.3	12.2.0.9.0	"oracle.swd.oui:12.2.0.9.0,oracle.swd.oui.core:
9.2.2.6 and later	12.2.0.2.2	"oracle.swd.oui:12.2.0.2.2,oracle.swd.oui.core:
Prior to 9.2.2.6	11.2.0.2.0	"oracle.swd.oui:11.2.0.2.0,oracle.swd.oui.core:

Note: The version of OUI decreased with Tools Release 9.2.3.4.

4. Save the `oraparam.ini` file.

Note: As noted in the table, the versions of the JRE or JDK that are provided with the Development Client installer may not be the latest versions available. See *Updating the JRE/JDK Used by the Installers* in the *Deployment Server Reference Guide*.

Note: The installer in this folder is obsolete: `<E1_dep_svr_install_directory>\OneWorld Client Install\ThirdParty\WebDevFeature\H4A85`. You can delete this folder. However, there are no adverse effects if you keep it.

Updating JDBC Drivers

Ensure the WLSH4A or WASH4A installers (Tools Releases prior to 9.2.9) or Development Client installer (Tools Releases 9.2.9 and later) have the latest driver files for the currently supported database versions.

Follow the instructions in the section Copy JDBC Drivers and the `tnsnames.ora` file to the Deployment Server in the Deployment Server Reference Guide.

Note: You must delete any obsolete driver files. Check Oracle Certifications for the latest drivers. Do not rename old files and save under the JDBC folder.

Updating the Database Drivers in the JDBJ.ini

Follow the instructions in the applicable section in Deployment Server Reference Guide for Microsoft Windows:

- *Updating the Database Drivers in the JDBJ.ini File (Tools Releases Prior to 9.2.9)*
- *Updating the Database Drivers in the JDBJ.ini File (Tools Release 9.2.9)*

Consider that Installers Are Not Backwards Compatible

OUI is not compatible between OUI versions. This means that if the OUI version changes between Tools Releases, all Development Client installations must be deinstalled and new installations of a full package using the new OUI must be performed. When a Development Client is deinstalled or saved via SnapShot, the WLSH4A or WASH4A is automatically removed or saved. You must not deinstall WLSH4A or WASH4A yourself.

See *Editing the oraparam.ini for the Development Client Installer During an Update or Upgrade* for information about the OUI versions.

Examples of a few configurations that are not allowed include:

- A package being installed with one version of OUI cannot be installed on an existing Development Client installation that used a different version of OUI.
- A WLSH4A or WASH4A installed with one version of OUI cannot be installed on an existing Development Client installation that used a different version of OUI.
- The OUI versions of Development Client, WLSH4A, and WASH4A installers cannot be different.
- The OUI installers' directories cannot contain any files from previous OUI installers.

Note: Avoid the above scenarios on the Development Client by saving with SnapShot or uninstalling the existing Development Client before attempting to install a full package using the new installers.

Development Client Installation Consideration for Tools Release 9.2.2.x and Greater

Running a version 12.2 installer to install a package on an existing Development Client that used version 11.2 OUI could cause issues. Although not required, Oracle highly recommends that the previous Development Client installation be saved via Snapshot or uninstalled before running a new installer.

Development Client Installation Consideration for Tools Release 9.2.3.x and Greater

You must install Visual Studio 2017 Redistributables before installing the client and web development feature. Web development features are available with Tools Releases prior to 9.2.9. The recommendation is to install both the 32-bit and 64-bit redistributables.

Note: Other versions of the Visual Studio Redistributables may be required. See Oracle Certifications for the correct versions.

Development Client Installation Consideration for Tools Release 9.2.9 and Later

You must install Visual Studio 2017 and 2022 latest Redistributables before installing the client and web development feature. Microsoft includes Redistributable packages from Visual Studio 2015 to 2022 in the bundle, allowing for the installation of a single package. The recommendation is to install both the 32-bit and 64-bit.

Removal of E1Local Database (Tools Release 9.2.5.x)

The E1Local database is removed from the development client in Tools Release 9.2.5. This removal impacts the EnterpriseOne developer in the following ways:

- Individual object specifications are stored in Central Objects and persist across package installs.
- A new Sandbox data source should be created for temporary table use.
- Business view check out and check in tables are migrated to the server.

The 9.2.5 Tools Rollup ESU delivers new definitions for an empty copy of the Central Object tables with new OCM mappings. These are the same tables created by a package build with "US" (User Specs) appended to the name. For example, DV920.F98720US, DV920.F98740US. . . The tables are new OMW objects and have the same design as the Central Object tables with new keys and the developer's account stored in a column allowing different versions of an object to be stored for different developers.

The "US" package resides in the Central Objects tablespace, however, minimal space is occupied because only modified objects are saved in this location.

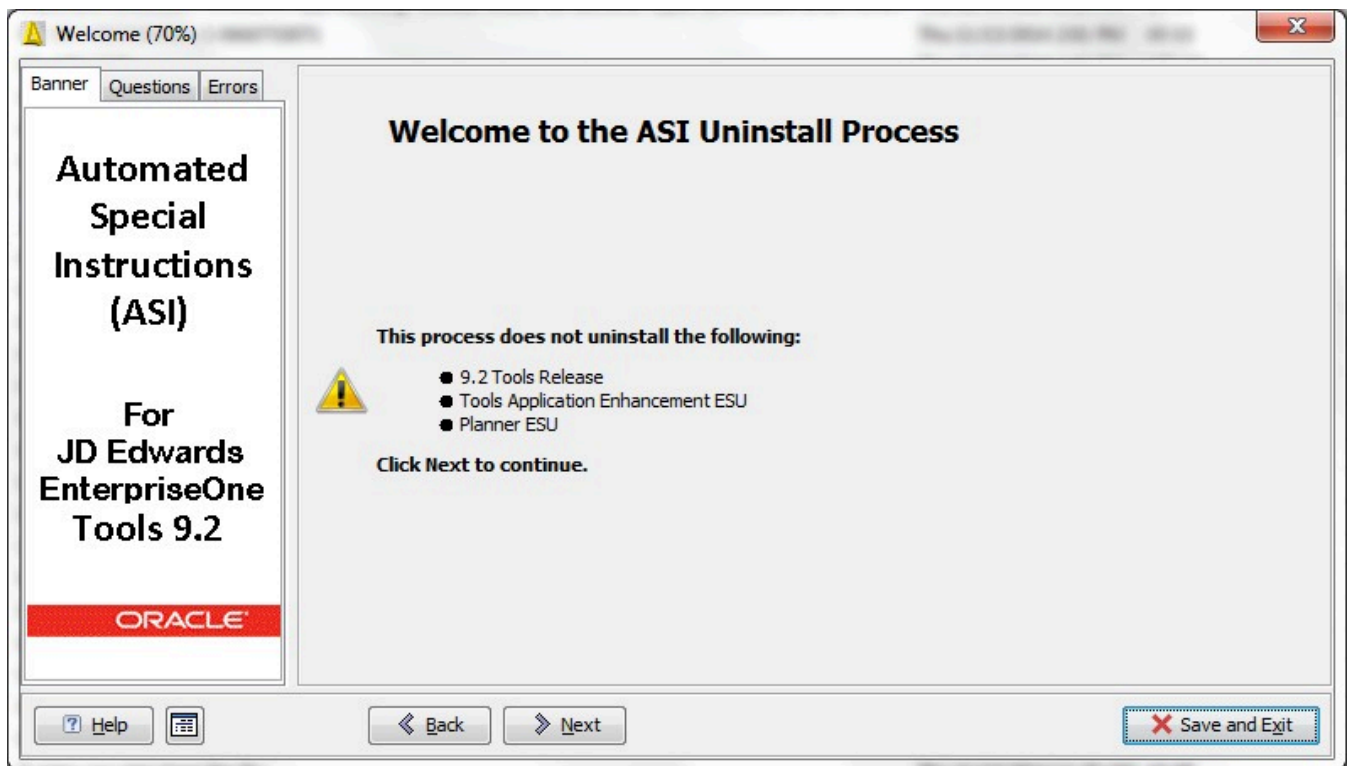
Note: The extra connections to the database may require you to increase the number of processes on the database.

Uninstalling ASI

To uninstall the ASI:

Note: This is for Applications Release 9.0 and 9.1 only. The uninstall process reverses the table conversions that were performed during the install. Uninstall will not remove new UDC values or OCM mappings.

1. Deploy the ASI through Change Assistant.
2. On Select Deployment Option, select Uninstall the ASI from the selected environment.
3. Click Next.



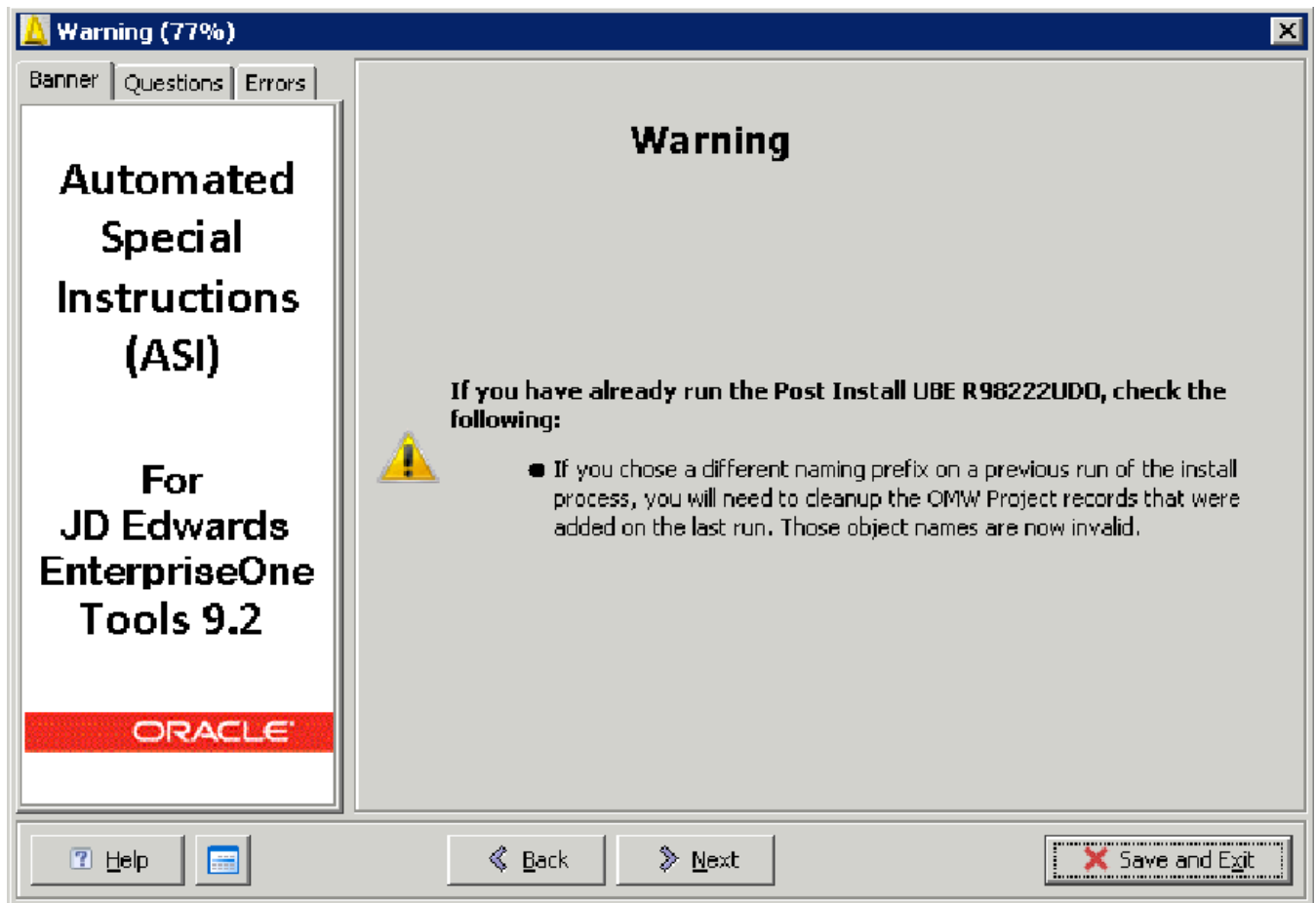
Note: The JD Edwards EnterpriseOne 9.2 Tools Release, EnterpriseOne Tools Application Enhancement ESU, and Planner ESU will not be uninstalled.

4. Click Next.

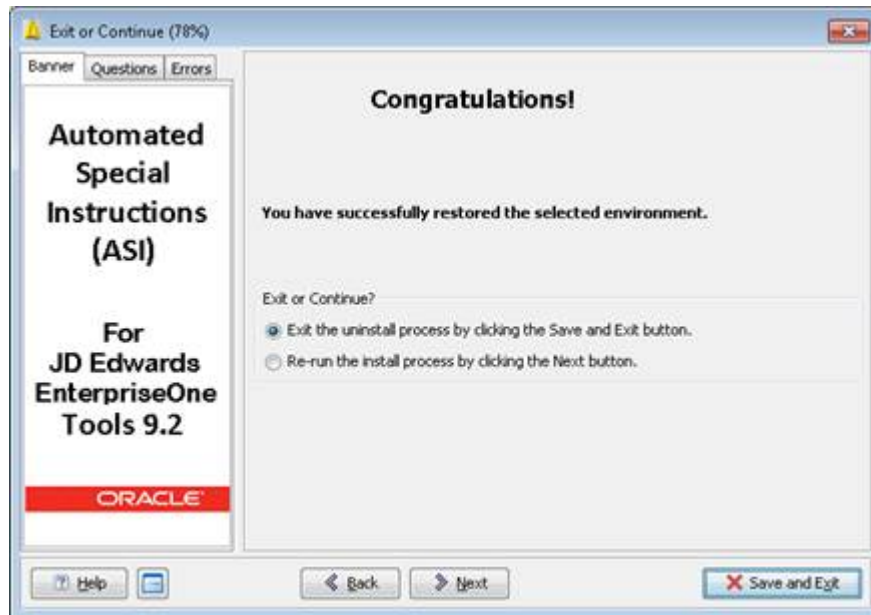


5. Click Next.

Post Install UBE R98222UDO warning.



6. Click Next.



7. Select Exit the uninstall process....and click Save and Exit to complete the uninstall process or select Re-run the install process.....and click Next to start the ASI installation.



8. Click Finish.

Additional Steps for Developer Testing (Tools Release 9.2.5.x)

1. Create a new Sandbox data source.
2. Create security overrides for developer sign-on IDs with connection to the Sandbox as the Owner, for example TCDTA.
3. Create a personal OCM mapping for the table you are changing, pointing to the new table conversion Sandbox data source.

Note: The default table mapping must still be Business Data – TEST, as the table conversion Sandbox data source will have a small subset of tables.

4. Generate new tables in the Sandbox data source.
5. Copy tables from Business Data – TEST to the Sandbox data source for testing.

Note: If the new data source is in a non-IBMi database that is different from the database where Central Objects reside, the new data source owner must be defined in the Central Objects database. The owner must be able to connect to that database. Without a local database, the Create Table / Create Index process needs to access Central Objects to read the table specifications.

3 Appendix A - UDO Table Architecture for 9.2

Changed Tables

- F952400 - User Generate Contents Detail
 - E1Pages
 - OVR - One View Reports
- F952420 - One Center Watch list detail
- F9860W - Web Object Master Table
- F00950W - Web Object Security

New Tables

- F9860WD - Web Object Language Description
- F9861W - Web Object Librarian Detail
- F952430 - Advanced Query
- F952440 - Grid Formats
- F952450 - CAFE One
- F952460 - Default UDO
- F98700R -Object Archive Repository
 - Consolidated UDO object repository.
 - Stores each UDO as a consolidated object.
 - Used to move objects as a single record (transfer/deployment).
- F98700H - Object Archive Repository History
 - History of Consolidated UDO Object repository.
 - History of changes to a UDO.
- F98700D
 - UDO dependencies ex. Watchlist depends on a query.

4 Appendix B - Deploying the ASI Using Change Assistant

Deploying the ASI Using Change Assistant

This process is used for Tools Releases prior to 9.2.7.

ASIs are special instructions for software updates executed automatically. They are downloaded separately from the software update you are installing, either using Update Center or Change Assistant. The JD Edwards EnterpriseOne Tools Release 9.2 ASI is a .par file and can be found using TL92* as a search criterion for the Update Name within the Update Center or Change Assistant. If you run the ASI then subsequently apply a new tools release, you will need to re-run the ASI.

Note: The ASI process now backs up the critical tables F952400, F952420, F00950W as xml files in the path code \package folder. You can restore these files through an uninstall path in the ASI.

Note: Before you execute the ASI on an AIX system with EnterpriseOne Tools Release 9.1.5 and earlier, you must perform the following steps:

1. Log into JDEPLAN environment.
2. Execute Object Configuration Manager (OCM).
3. Select Planner - 9xx OCM data source.
4. Search on the following criteria to locate the default business function mapping:
 - a. Environment = JXX9X0
 - b. Type = BSFN
 - c. Object = DEFAULT
5. Select to deactivate the mapping.
6. Sign off all EnterpriseOne processes.
7. Execute the ASI.

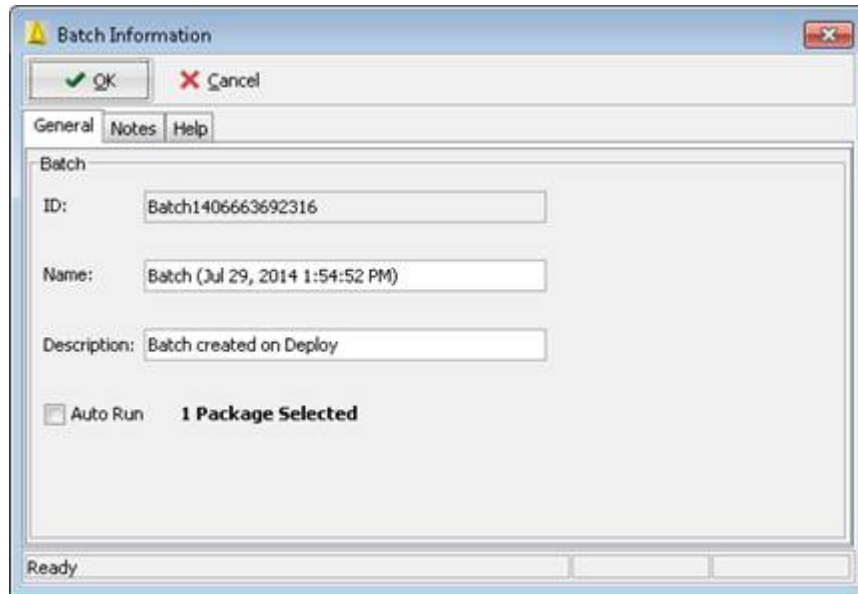
See: Appendix C: ASI Validations

See "Deploying Automated Special Instructions" on JD Edwards EnterpriseOne documentation on My Oracle Support ([Doc ID 1486063.1](#)).

To deploy an ASI:

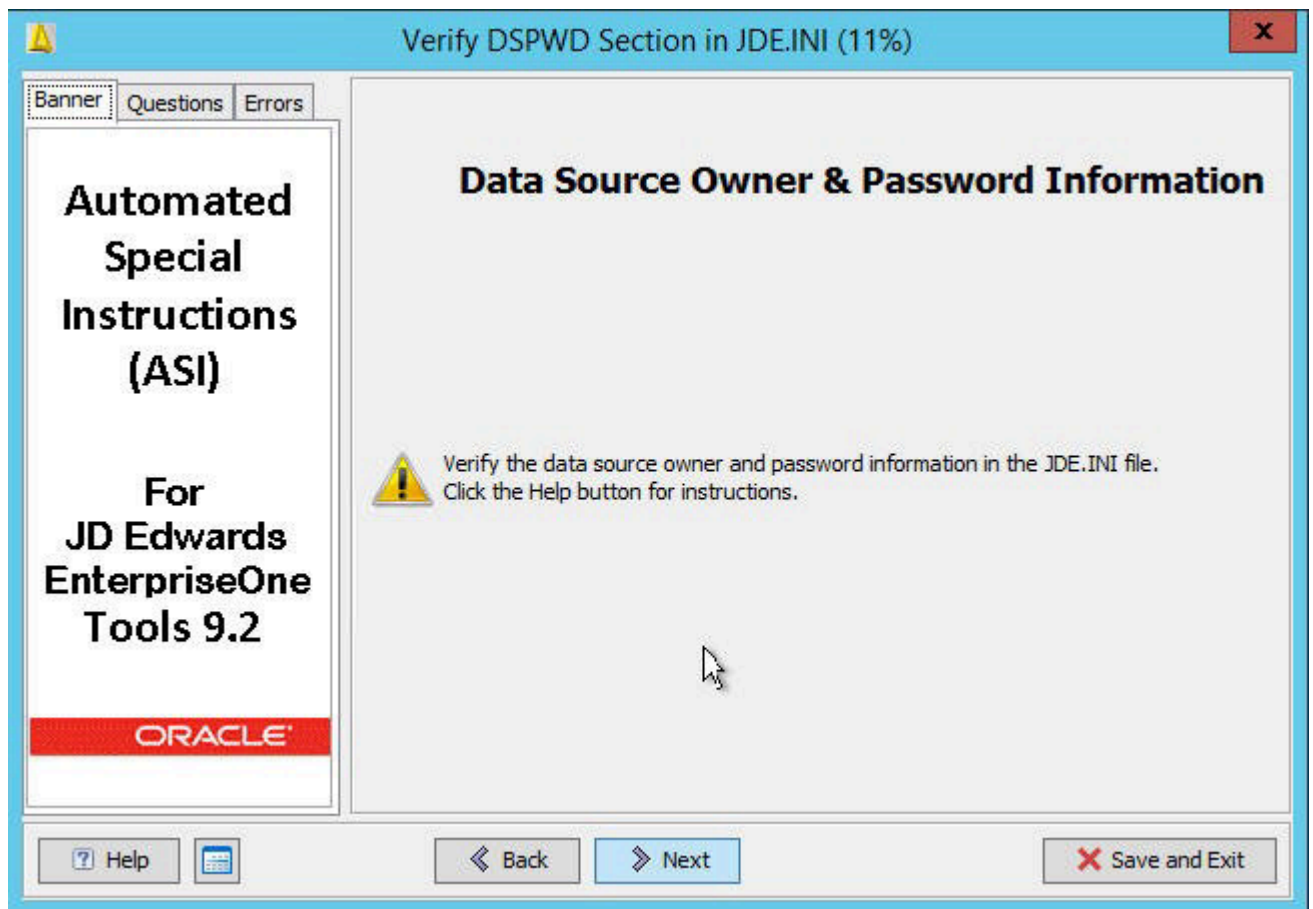
1. Obtain the latest TL92* ASI from the Oracle JD Edwards EnterpriseOne [Update Center](#).
2. Enable Security Server on the Deployment Server and the Enterprise Server.
3. Download and access with Change Assistant.

4. On Change Assistant, expand the Work with Packages node.
5. Navigate to the ASI package that you downloaded.
6. Select the ASI package by checking the box next to the package.
7. Click Deploy on the Work with Packages toolbar to start the ASI.



See: Appendix D: Errors and Warnings

8. Click OK to continue.

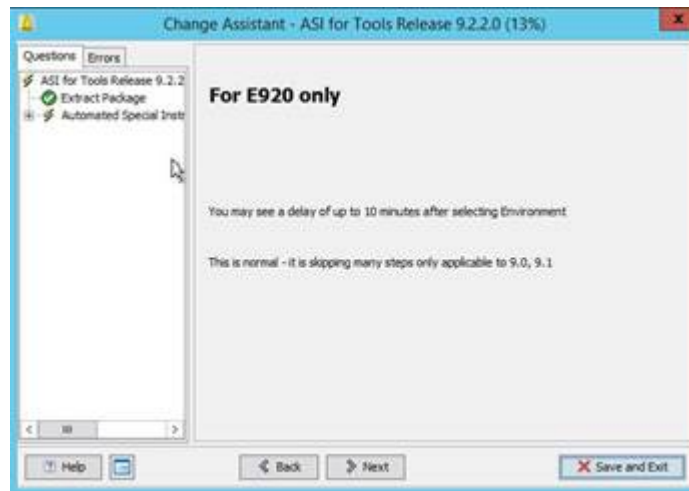


This warning displays only if the Security Server is disabled.

Note: If you have changed the passwords for any table owners created during the Platform Pack installation, they must be defined in the `jde.ini` file. The ASI assumes that the table owner's password is the same as the table owner, unless it finds overrides in the `jde.ini` file on the Deployment Server.

9. Verify the data source owner and password information

10. Click Next to continue deploying new tasks.



If you are on E920, skip to Step 12. The following screens are displayed if you are on E900 or E910.

The Select Deployment Type dialog box opens and presents the following options:

- Install the ASI to the selected environment.
- Uninstall the ASI from the selected environment.

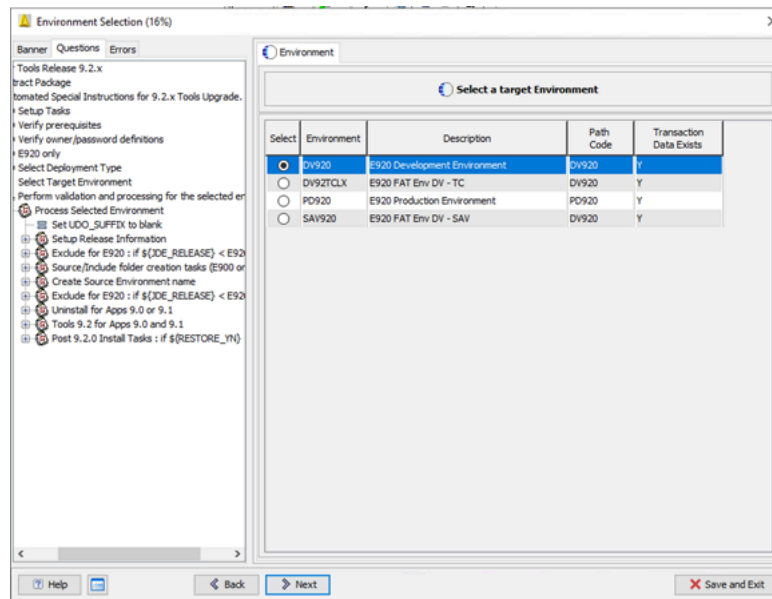
Note: The uninstall process only reverses the changes to the UDO tables. It does not uninstall any UDCs or the Rollup ESU.

11. Select Install the ASI to the selected environment (Applications Releases 9.0 and 9.1 only). The Uninstall option only reverses the database changes.

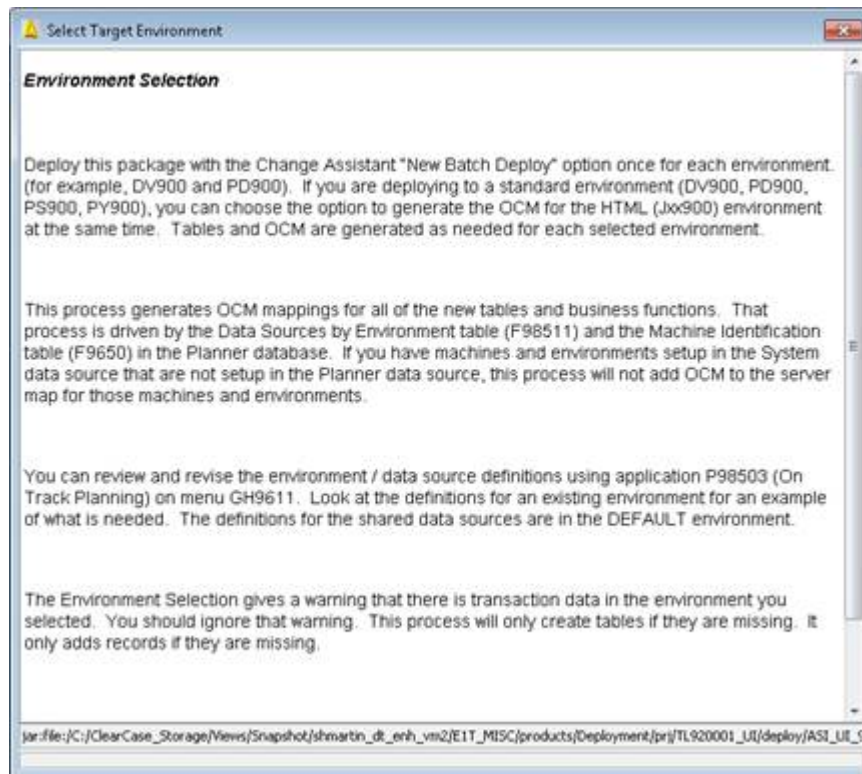


12. Click Next.

Note: To access additional information on each step, click the Help button.

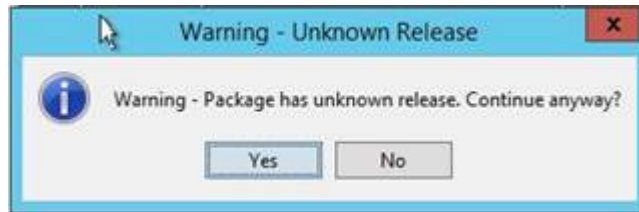


13. Click the Help button for details regarding this dialog box.



14. Click the X to close out of the Help dialog box.

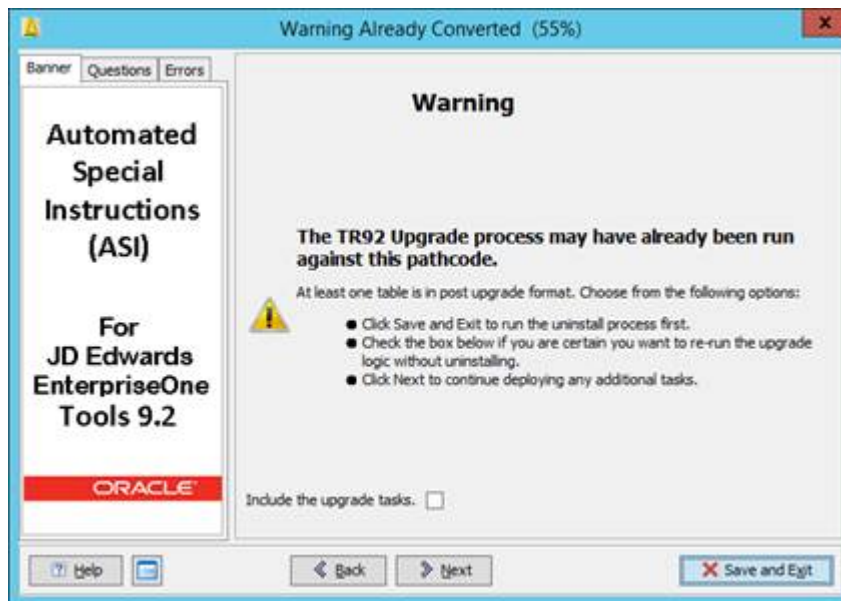
15. Select the target environment and click Next.



16. Click, Yes on Warning - Unknown Release.

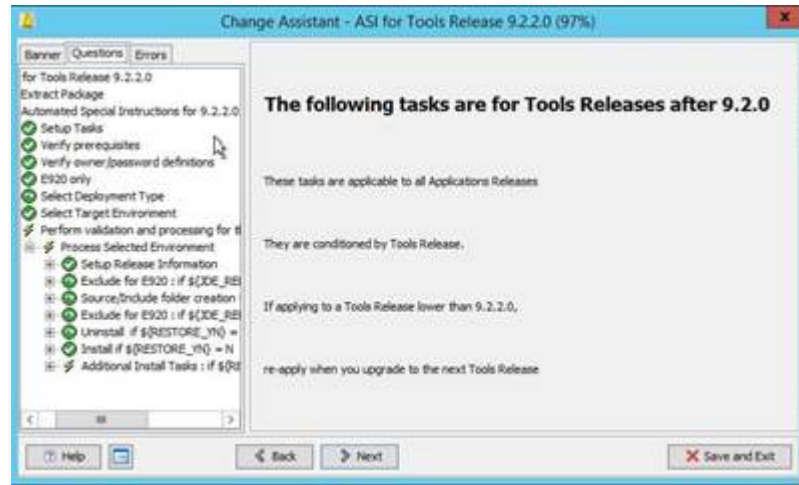


17. Click, Yes on Warning - Transaction Data



- 18. For Applications Release 9.0 and 9.1 only, select, Include the upgrade tasks to run the UDO table conversions again. Otherwise click Next to execute new tools upgrades tasks.

New Tasks for Tools Release 9.2.0.5



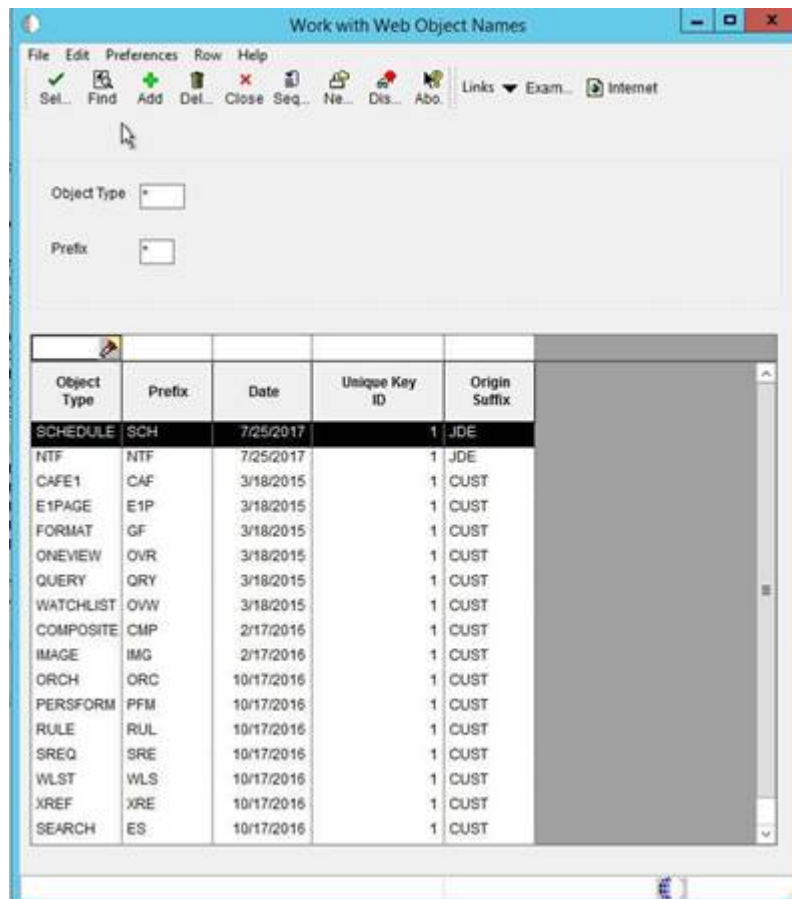
- 19. Click Next to continue.



20. Click Next to continue.



21. At User Defined Object Naming Information, click Next to define a suffix to new UDOs.

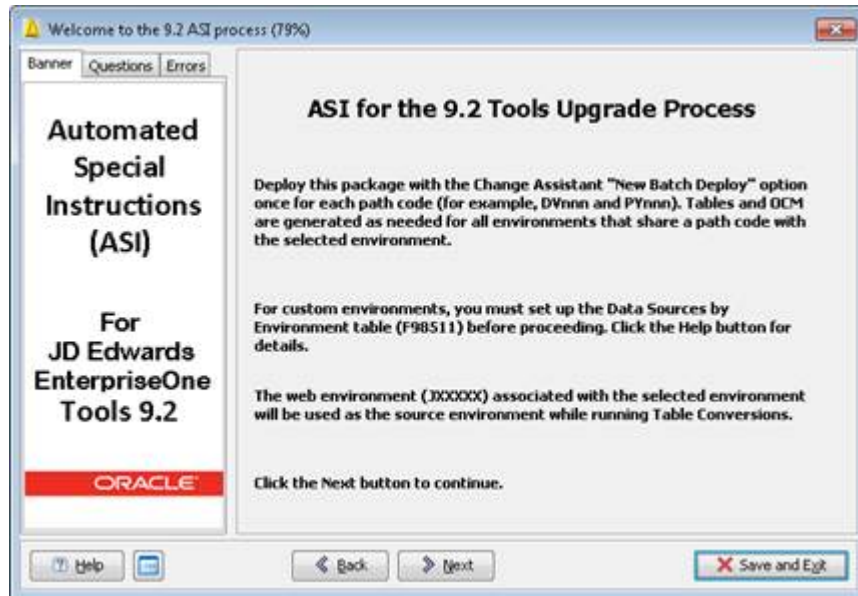


22. On the Work with Web Object Names select a new UDO type.

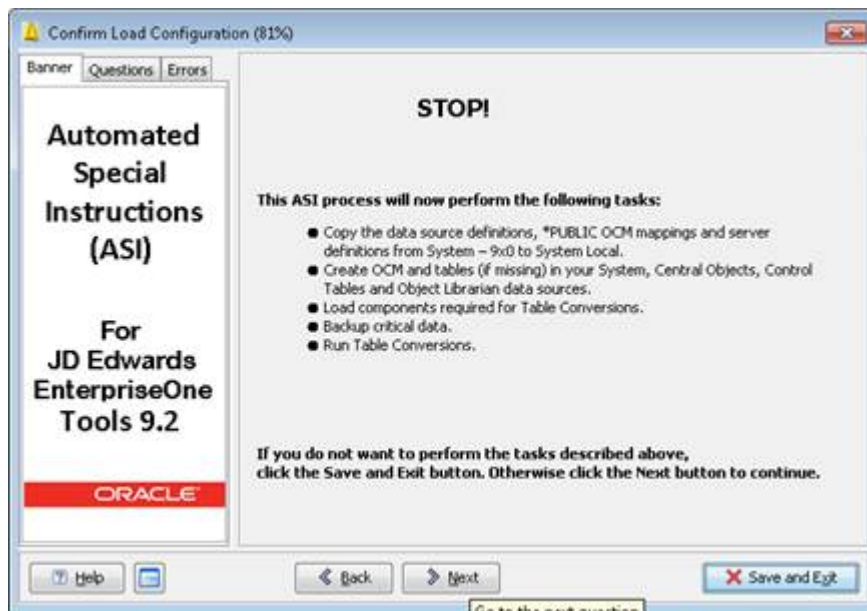
23. Update the Suffix and click OK.

Note: The suffix should not be path code specific. UDOs retain the same names as they are promoted from path code to path code.

Note: If you are on EnterpriseOne 9.2 (E920), you will skip to step 36.



24. Click Next.



25. Click Next.

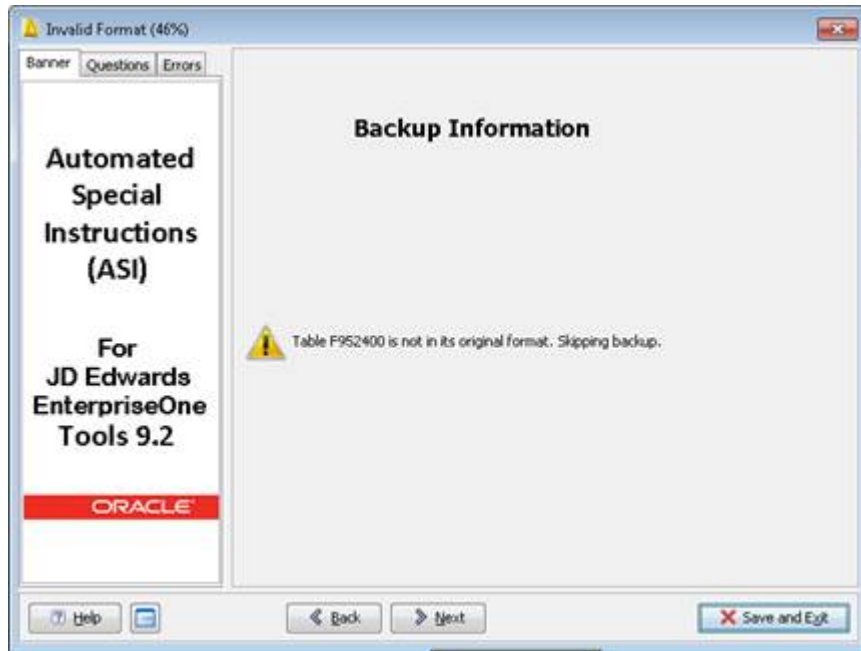


26. Click Next.



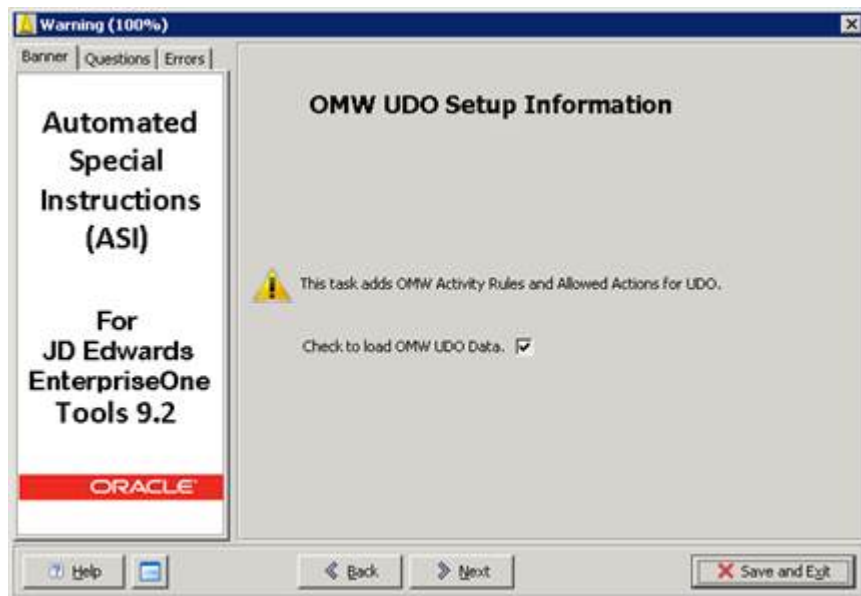
27. Click Next.

If F95240, F592420, F00950W, and F9000 tables have been backed up from a previous deployment, you can select to overwrite them or click Next to continue.



The ASI verifies the critical tables are in original format and skips the backup.

28. Click Next.



29. Select the "Check to load OMW UDO Data" check box and click Next.

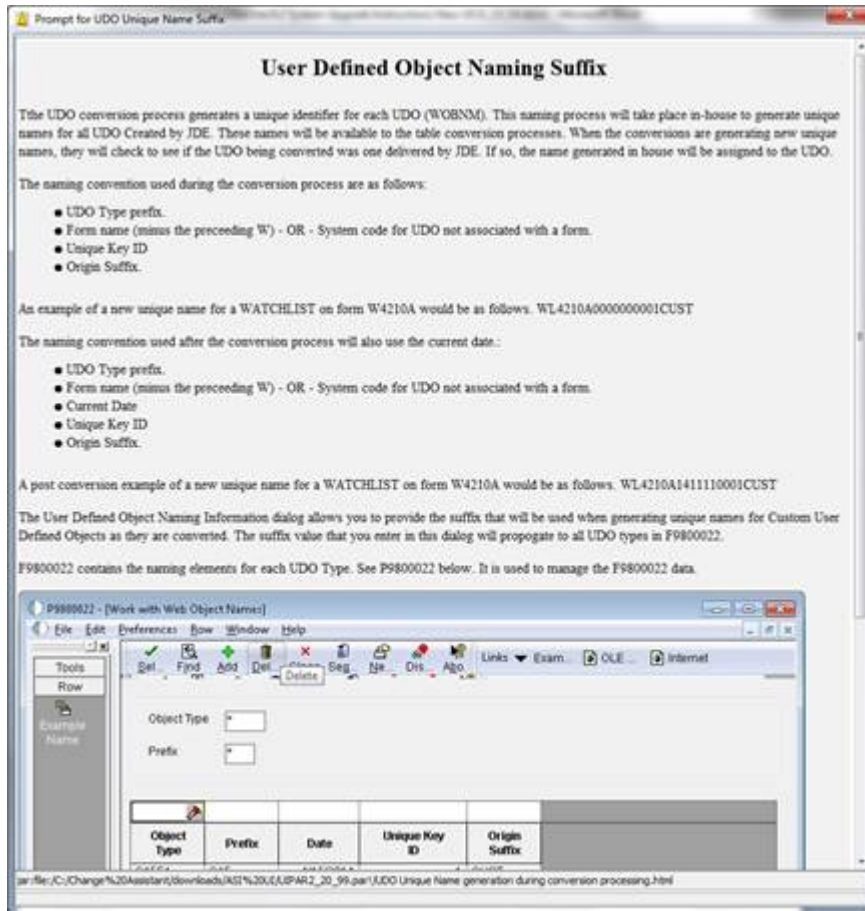
Note: Check to load OMW UDO Data adds records in F98223 - Allowed Actions (Delete is being delivered for all UDOs) and F98225 - OMW Transfer Activity Rules for E900 and E910.



30. Enter a 1-6 character suffix to be used during the table conversion processes.

Note: Invalid characters: !"#\$\$%&'()*+,-./:;<=>?@[\\]^_`{|}~,

31. Click the Help button to view suffix details.

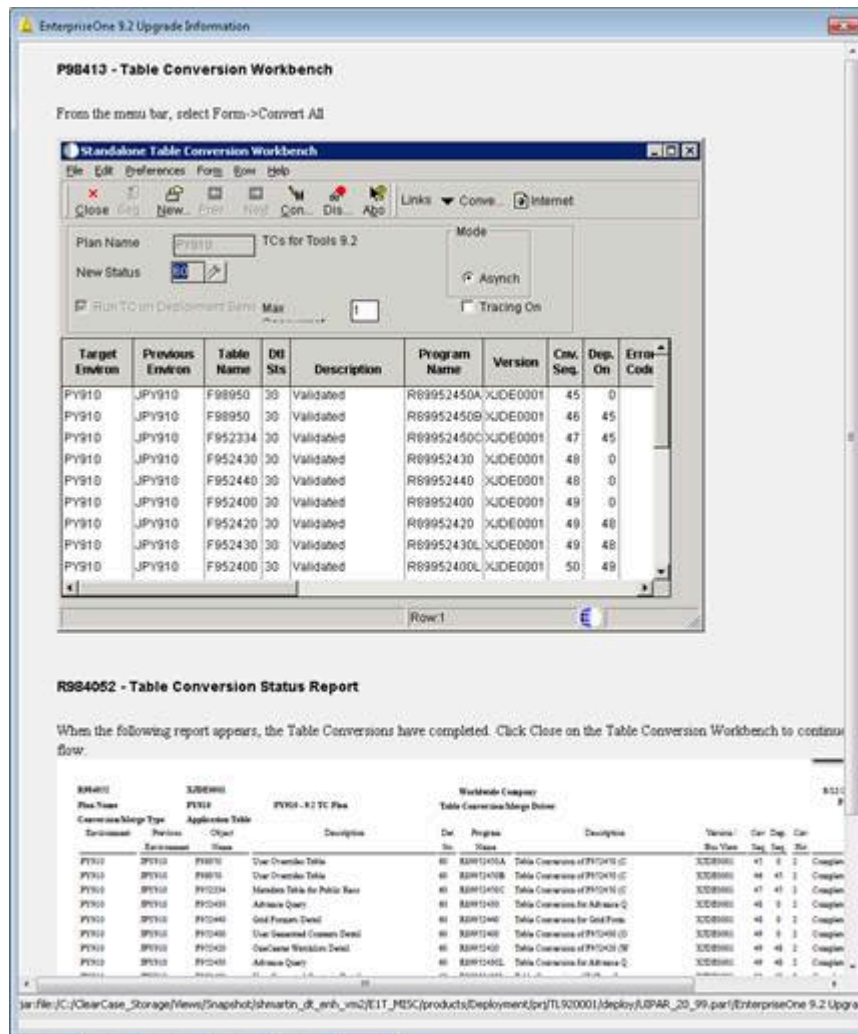


32. Click the X to close.



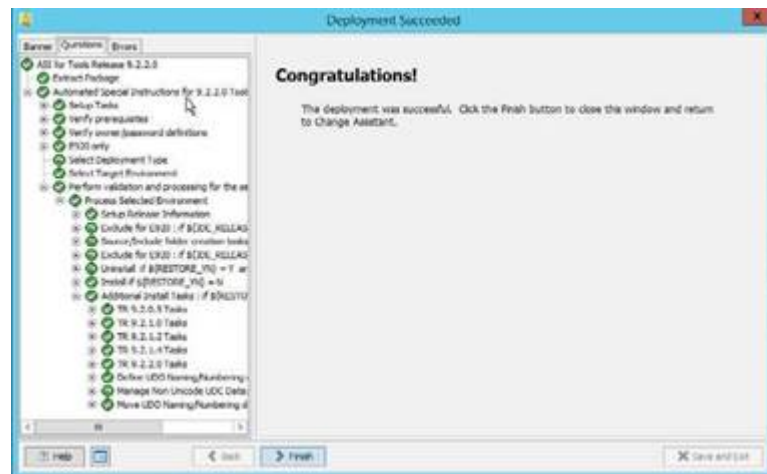
Note: Read the Table Conversion Workbench instructions carefully. The instructions describe how to proceed with the dialog boxes to follow.

33. Click the Help button to view Table Conversion Workbench details.



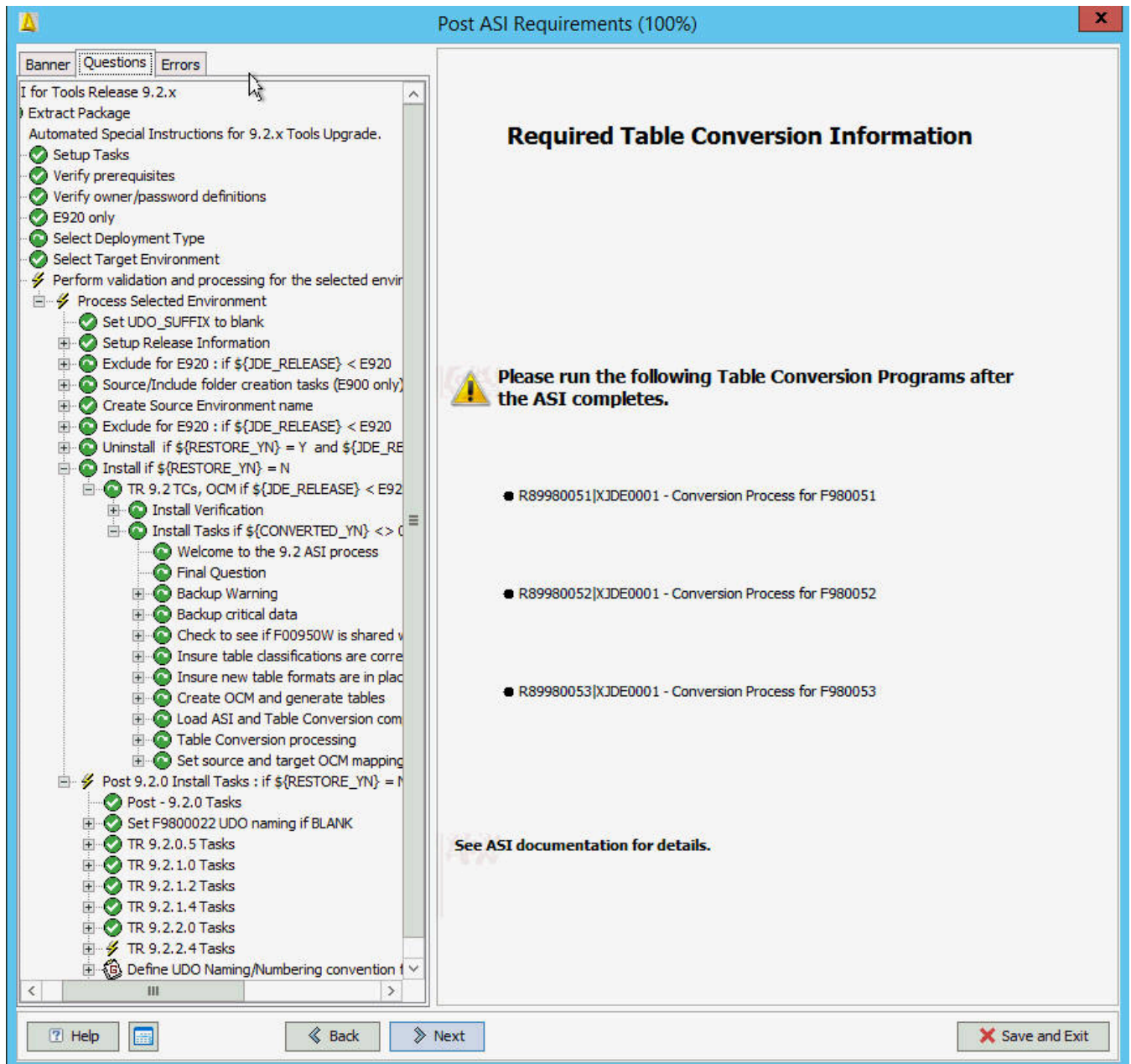
36. Click Close on the Table Conversion Workbench.

Note: Follow the recommended course of action displayed on the dialog box for any failed table conversion.



37. Execute table conversions manually.

The ASI will only prompt you to run the table conversions if it has detected data in F980052 in the System - xxx data source and no data in F980052 in the associated Control Tables data source.



You will see the above dialog appear only if F980051, F980052, and F980053 tables are in the wrong format and have records in the F980052 table.

Note: The following information assumes the ASI has been applied to target environment DV9X,X which has an associated WAN environment of JDV9XX. The associated WAN environment is to be used as the source environment for the table conversions.

Verify whether there are any records in your version of these three tables in System - xxx. You won't be able to use Universal Table Browser, you will need to use sqlplus / strsql or another database tool. If there are no records, no action needs to be taken. The ASI will have generated the tables for you into the Control Tables - xxx data source for your target environment.

The ASI will have applied the correct .par file to your Deployment Server.

The ASI will have reset the OCM for these 3 tables to point to Control Tables - xxx for the environment you applied the ASI to, plus any other environments that share the same path code.

Your source and target environments for the table conversion must be different. The ASI has set the OCM for these three tables to System - xxx for the WAN environment (JDV9XX) associated with the environment you ran the ASI against.

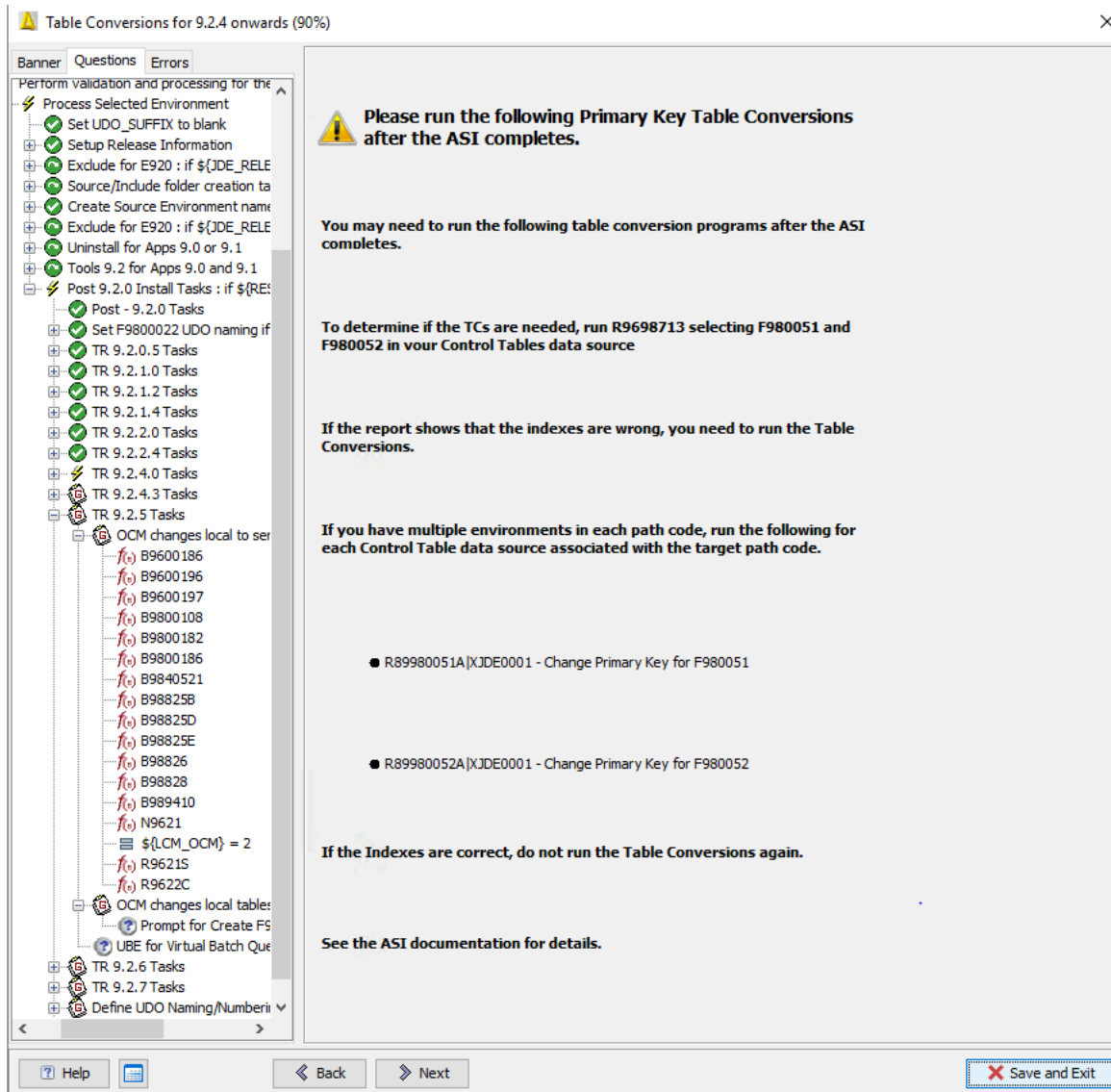
- a. Run the table conversions one at a time signed into JDEPLAN
- b. Submit from Batch Versions.
- c. Click on Properties and change the source environment to JDV9XX and the target environment to DV9XX.

Once the TCs have run, reset the OCM in JDEPLAN for the source environment to point to the Control Tables - xxx again.

If you have multiple environments with different Control Tables associated with this path code, copy the output table from the table conversion to each of the environments' Control Tables. For example:

- o You have DV920 JDV920 DV920XX DV920YY and DV920XX and YY have their own unique Control Tables.
- o Run the table conversion against JDV920 DV920, and then copy the F980051, 52, 53 from Control Tables - Test to the Control Tables for DV920XX and DV920YY.

38. Release 9.2.4



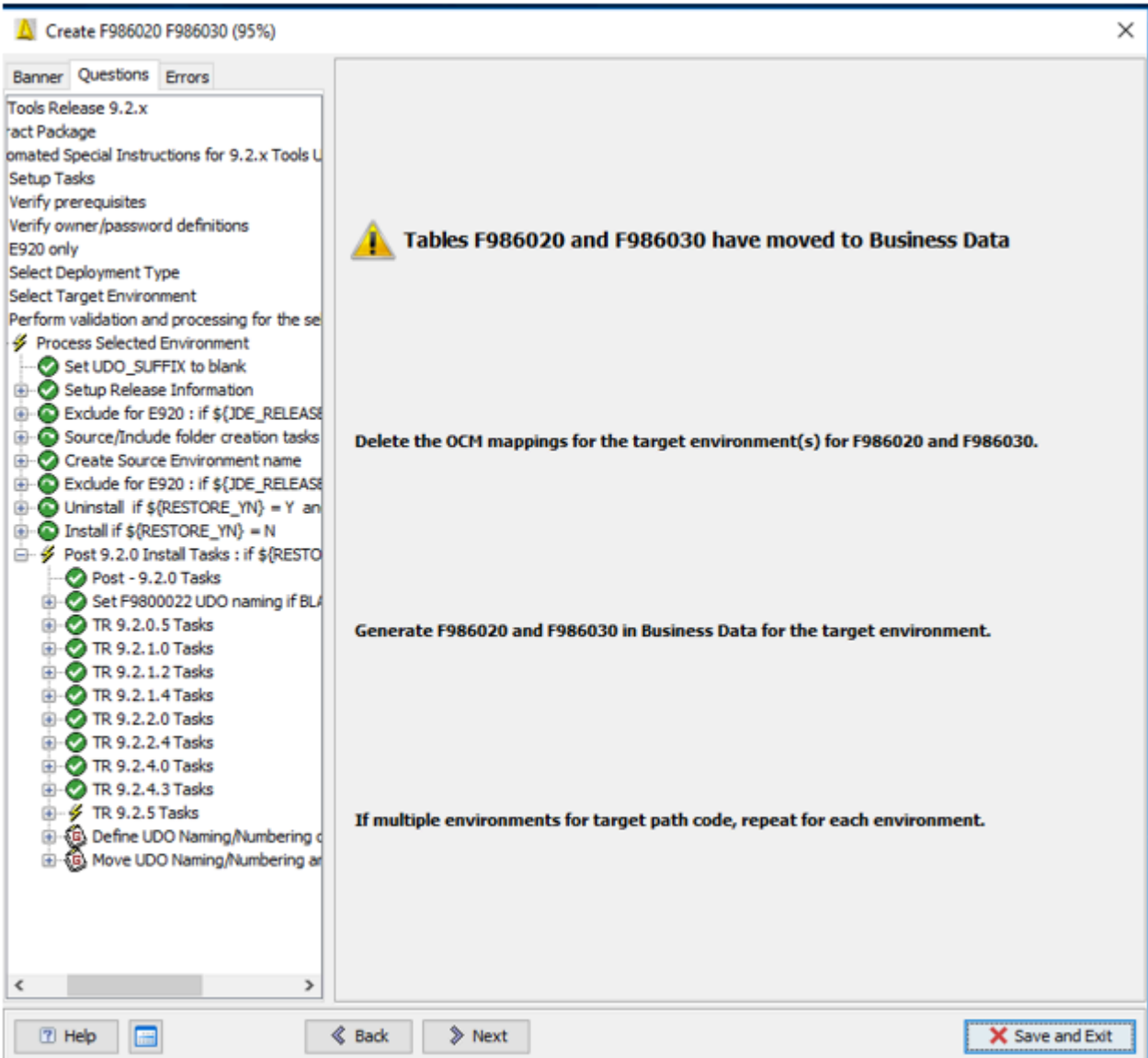
You may need to run the above table conversion programs after the ASI completes.

To determine if the above table conversions are necessary, run R9698713 selecting F980051 and F980052 in the Control Table data source.

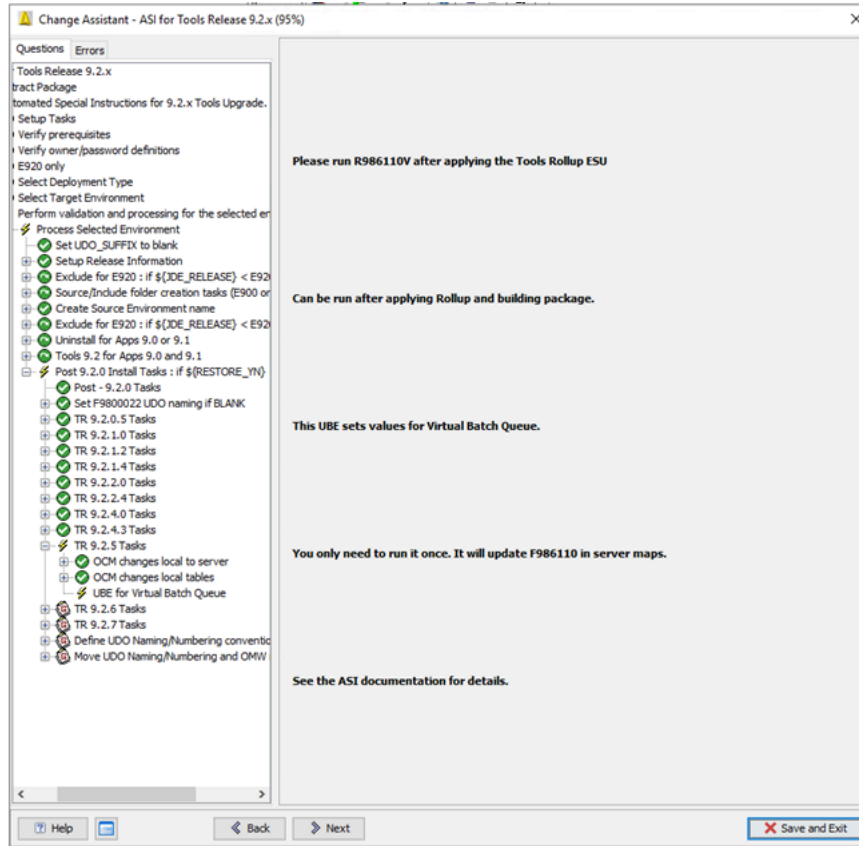
If you have multiple environments in each path code, run the following for each Control Table data source associated with the target path code:

- R89980051A|XJDE0001 - Change Primary Key for F980051
- R89980052A|XJDE0001 - Change Primary Key for F980052

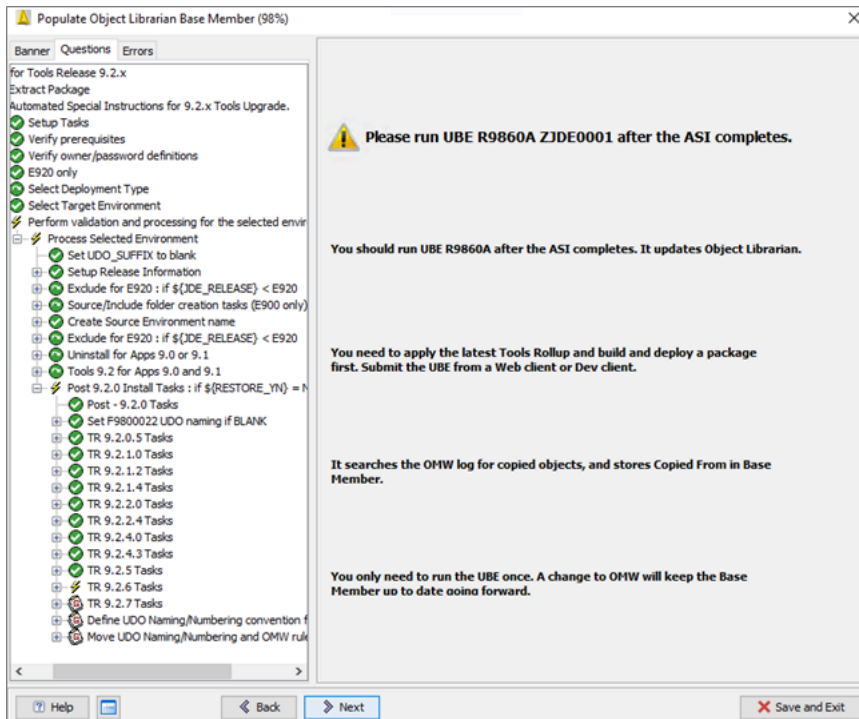
- 39. In Release 9.2.5, the E1Local database has been removed. The F986020 and F986030 tables have been moved to Business Data. You must generate the tables in Business Data for the target environment.



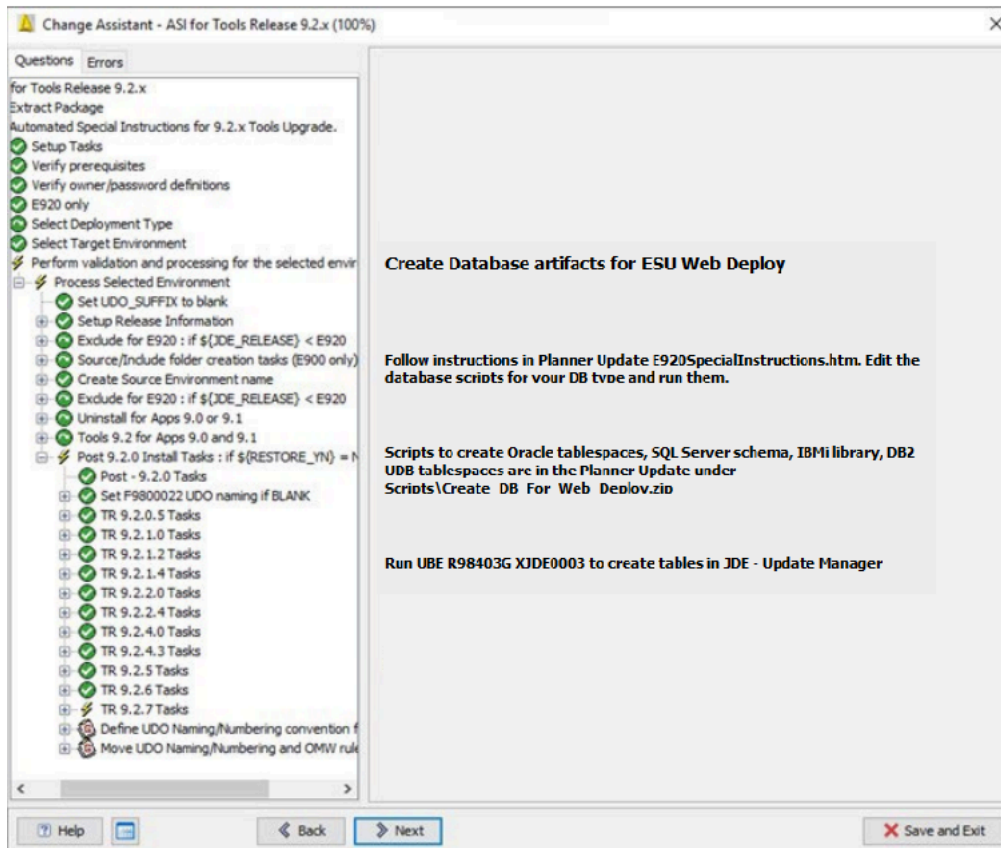
40. Setting values for Virtual Batch Queues (Release 9.2.5)



41. Release 9.2.6 Run UBE R9860A.



42. Tools Release 9.2.7.0



The database scripts are now being delivered in the Planner Update under `x:\JDEdwards\E920\planner\package\<ESU-name>\scripts\Create_DB_For_Web_Deploy.zip`. See Planner Special Instructions 9.2.7 section for how to run the scripts.

Special Instructions for Tools 9.2.7 Software Update on a Web Client

The following steps must be done in order to use the new Software Update on a Web Client feature.

- Run the database scripts for your Database / Platform.
- Create System User and Security Override.
- Run R98403G XJDE0003 to create needed tables in JDE – Update Manager.

Run database scripts

Note: This step only needs to be done once. The scripts are shipped with this Planner Update and can be found in x:\JD Edwards\E920\Planner\Package\<ESU>\Scripts\Create_DB_For_Web_Deploy.zip

The instructions for editing each database type are in the readme.txt included in the zip file.

For Oracle:

In ORCL_crtabsp_JDUPDATE.unx or .win, check where your existing Table tablespaces and Index tablespaces are, and substitute those locations into the create tablespace commands for example &&TABLE_PATH
In ORCL_crusr_JDUPDATE.sql change the password for JDUPDATE to the password of your choice.

For Oracle RAC:

There is an alternate crt_ORCL_RAC_JDUPDATE.sql script. Replace +DATA with the name of your disk group, and change the password.

For SQL Server, change the JDUPDATE password to the password of your choice in SQL_create_owner_JDUPDATE.bat. Also substitute your SA password and your server name.

For IBMi, copy and paste the CRTLIB command in IBMi_CRTLIB_JDUPDATE.txt to create the JDUPDATE library.

For DB2 UDB on AIX, you need to create a home directory for JDUPDATE, and then create the jdupdate system user. for AIX:

```
useradd -d /home/jdupdate -m -g owshare jdupdate
```

For Windows, create a JDUPDATE local user with password of your choice, and add it to the OWSHARE group.

The instructions on running the DB2 UDB scripts from db2cmd are documented as comments at the beginning of the crt_UDB_JDUPDATE.sh and crt_UDB_JDUPDATE.bat scripts.

Create System User and Security Override

This step can only be done after running the ASI TL927001 or above. This applies to databases where there is an owner (SQL Server, Oracle and DB2 UDB). Detailed instructions are in the Package Management Guide Appendix A <https://docs.oracle.com/en/applications/jd-edwards/change-management/9.2.x/eotpk/adding-system-user-each-data-source.html#GUID-737D4941-D169-4F12-8400-C6543110C174>

Create a System User JDUPDATE. Then add a Security Override in P98LPSEC for the user specified in the jde.ini on the Enterprise Server (often JDE). JDE is JDUPDATE when connecting to JDE – Update Manager. This will be used when doing the package Deploy from the Web Client. If submitting the Package Deploy from the Deployment Server or an Admin client, the submitted jobs will use the signed on user.

Run R98403G XJDE0003 to create needed tables in JDE – Update Manager.

This step can only be done after running the ASI TL927001 or above. Also the system user and security overrides must exist.

Verifying ASI Table Conversions(E910 and E900 Only)

It is recommended to verify the success of the ASI table conversions by verifying:

- Tables
- Security
- Runtime

Tables

Use the following grid to verify the UDO tables:

UDO	Table	Verification
One View Reports and EnterpriseOne Page	F952400	Has the WOBNM column.
EnterpriseOne Watchlist	F952420	Has the WOBNM column.
Queries	F952430	Has the same record count as F98950.
Grid Formats	F952440	Has the same record count as F98950.
CAFE1	F952450	Has the same record count as F98950.

Security

You use (P00950) to verify that the UDOs have the same level of security as before the EnterpriseOne Tools Release upgrade.

Runtime

After the ASI runs, you should verify access to UDO is the same as before the EnterpriseOne Tools Release upgrade.

If the ASI halts or table conversions do not successfully run, it is recommended to fix the error and run the ASI uninstall program. The ASI uninstall program performs several clean-up operations, table clean-up, and restoring. This action will allow you to run the ASI as if it is the first time.

Note: Verify the F00165 table in Business Data has the F00165_5. If this does not exist, run the R9698713 UBE which will generate missing indexes.

5 Appendix C - Table Conversion Schedule

JD Edwards EnterpriseOne Tools Release 9.2 Table Conversions

Sequence/ Dependency	TC Input	TCF/TC Version	Inputs/ Outputs	Run this Job	Requirements	Purpose	Notes
45/ 0	F98950	R89952450A XJDE0001	F98950 F952450	To convert Cafe1 data in F98950 (UOTY = 'R' and SEQ = '4') when upgrading from 9.1.	None	Converts old Cafe1 objects, inserts records to F98950T, creates XML Document BLOB to update F952450 from F98950, F952330, F952331 and F952334. Populates Object Librarian records in F9860W and F9861W.	Writes all the language data into F952450, which will be converted and deleted later.
46/ 45	F952334	R89952450C XJDE0001	F952334 F952450	To convert Related Application Information Framework (RAIF) content when upgrading from 9.1.	R89952450A	Converts RAIF content, creates the XML Document BLOB to update F952450 from F952330, F952331 and F952334. Populates Object Librarian records in F9860W and F9861W.	None
47/ 0	F952430	R89952430 XJDE0001	F98950 F952430	To convert Query (AQ) data in F98950 (UOTY = 'AQ' and IDLST! = '1') when upgrading from 9.1.	None	Convert query data to F952430 and write AQ information to F98950T. Populates Object Librarian records in F9860W and F9861W.	None
47/ 0	F952440	R89952440 XJDE0001	F98950 F952440	To convert Grid Format (GF) data in F98950 (UOTY='GD') upgrading from 9.1.	None	Retrieves Grid Tab Name from BLOB, write Grid Format Record to F952440, and populates Object Librarian records in F9860W and F9861W.	None

Sequence/ Dependency	TC Input	TCF/TC Version	Inputs/ Outputs	Run this Job	Requirements	Purpose	Notes
48/ 47	F952440	R89952440B XJDE0001	F952440 F9860WD	To convert Grid Format (GF) language data in F952440 (WOFU1='L') when upgrading from 9.1.	R89952440	Convert GF language data to F9860WD, and delete language data in F952440 after TC.	None
48/ 47	F952440	R89952440A XJDE0001	F98950 F9860WD	To convert Grid Format (GF) data in F98950 (UOTY='GD'; USER='*PUB' when upgrading from 9.1.	R89952440	Fetches GF language data from F98950D and populates GF data in F9860WD.	None
49/ 0	F952400	R89952400 XJDE0001	F952400 F952400	In-place convert for OneView Report (OVR) and E1Page (E1P) when upgrading from 9.1.	None	Converts old OVR and E1P objects to new format of F952400. Populates Object Librarian records in F9860W and F9861W.	Writes the E1P language data into F952400, which will be converted and deleted later. There is no language data for OVR.
49/ 47	F952420	R89952420 XJDE0001	F952420 F952420	In-place convert for Watchlist when upgrading from 9.1.	R89952430	Converts old Watchlist objects to new format of F952420. Populates Object Librarian records in F9860W and F9861W.	Retrieves Advanced Query Object ID (AQOID) from F98950T.
49/ 47	F952430	R89952430L XJDE0001	F98950 F9860WD	To convert Query (AQ) language data in F98950 (UOTY='AQ' and IDLST!='1') when upgrading from 9.1.	R89952430	Fetches language data from F98950D and F98950T. Populates AQ language data in F9860WD.	None
50/ 49	F952400	R899524000 XJDE0001	F952400 F952400	To delete extra OneView Report	R89952400	Deletes the extra OVR checkout record if the reserved user	None

Sequence/ Dependency	TC Input	TCF/TC Version	Inputs/ Outputs	Run this Job	Requirements	Purpose	Notes
				(OVR) data after TC R89952400		is equal to the UGCOWNER in F952400.	
50/ 49	F952400	R89952400L XJDE0001	F952400 F9860WD	To convert E1Page (E1P) language data in F952400 (LNGP>Blan when upgrading from 9.1.	R89952400	Converts E1P language data to F9860WD, and deletes language data in F952400 after TC.	None
50/ 45	F98950	R89952450B XJDE0001	F98950 F952460	To convert Cafe2 data in F98950 (UOTY="RI") when upgrading from 9.1	R89952450A	To fetch the WOBNM data from F98950D and insert to F9860WD.	None
51/ 50	F9312	R9312TC XJDE0001	F9312 F9312			F9312 Table Primary Unique Key index has changed.	This table conversion must run prior to any other security table conversion.
52/ 51	F00950W	R00950WF XJDE0001	F00950W F00950W			1. F00950W Table columns and index changes 2. User with Action Security of Share automatically has Modify Security set.	This table conversion must be run prior to any other security table conversion.
53/ 52	F00950	R00950WTE XJDE0001	F00950 F00950W	Select on SECTY security type value equals H		1. Create View Security. 2. Automatically create *PUBLIC for Create Action Security.	
53/ 52	F98950	R00950WTD XJDE0001	F958974 F00950W	Select on TAREC feature type value equals 3		1. Create Action Security based on authorization definition. 2. Create View Security based on authorization.	1. Web Enable has to be turned on for Environment. 2. The environment has to be in

Sequence/ Dependency	TC Input	TCF/TC Version	Inputs/ Outputs	Run this Job	Requirements	Purpose	Notes
							the same path code as the source environment.
53/ 52	F98950	R00950WTA XJDE0001	F98950 F00950W	Select UO data type value equals GF		1. TF00950W Table columns and index changes. 2. User with Action Security of Share automatically has modify security set.	None
53/ 52	F98950	R00950WTB XJDE0001	F98950 F00950W	Select UO data type value equals AQ and Sequence value equals 4		1. The View Security records are written for value *PUBLIC and E1 Role for specific application and form. 2. Action Security is created automatically with *PUBLIC and Create only actions.	None
53/ 52	F98950	R00950WTC XJDE0001	F98950 F00950W	Select UO data type value equals RI		1. The View Security records are written for *PUBLIC and E1 Role for specific applications and forms.	None
53/ 52	F98950	R00950WTG XJDE0001	F952332 F00950W			1. Create Action Security based on authorization definition. 2. Create View Security based on authorization.	1. Web Enable has to be turned on for Environment. 2. The environment has to be in the same path code as the source environment.
54/ 53	F9000	R9000OVR XJDE0001	F9000 F9000			1. A non-task type of 23, the records are directly copied. 2. For task type 23, the One View report ID is changed to UDO generated ID.	.

Sequence/ Dependency	TC Input	TCF/TC Version	Inputs/ Outputs	Run this Job	Requirements	Purpose	Notes
						3. For task type 23, the query ID is changed to UDO generated ID.	

6 Appendix D - ASI Validations

ASI Validations

Security Check

Is there a security server defined in the deployment server jde.ini. We highly recommend that you run this process with the security server enabled.

[SECURITY]

SecurityServer=

Verify 9.2 TR

Uses an API to detect the Deployment Server system level. An error occurs if the system level is not 9.2 or greater.

Verify Latest Planner

Checks for B967121 in the local environment. This is delivered by the planner ESU. If it does not exist, an error occurs.

Verify Owner/Password Definitions

Checks the jde.ini on the deployment server for the [DSPWD] section. Each data source owner needs to have a password associated with it. This step is applicable only if the Security Server is disabled.

[DSPWD]

Format is datasource OWNER=PASSWORD

DD920=DD920

DV920=DV920

JDE=JDE

OL920=OL920

PD920=PD920

PS920=PS920

PS920CTL=PS920CTL

PS920DTA=PS920DTA
PY920=PY920
SVM920=SVM920
SY910=SY910
SVM910=SVM910
OL910=OL910
DD910=DD910
DV910=DV910
SY920=SY920
TESTCTL=TESTCTL
TESTDTA=TESTDTA
PS910=PS910
PS910DTA=PS910DTA
PS910CTL=PS910CTL
PY910=PY910
CRPDTA=CRPDTA
CRPCTL=CRPCTL
PD910=PD910
PRODCTL=PRODCTL
PRODDTA=PRODDTA

Verify Control Tables DS is Unicode

Uses N8900950 to get the data source defined for type 'C' Control Tables. N96500 then checks the F98611 to see if the data source has the Unicode flag set. If not, the process copies UDCs to an interim location.

Verify EnterpriseOne Tools Application Enhancement ESU is installed

Checks for the existence of a new table, F952430. If the table does not exist, an error occurs.

7 Appendix E - Errors and Warnings

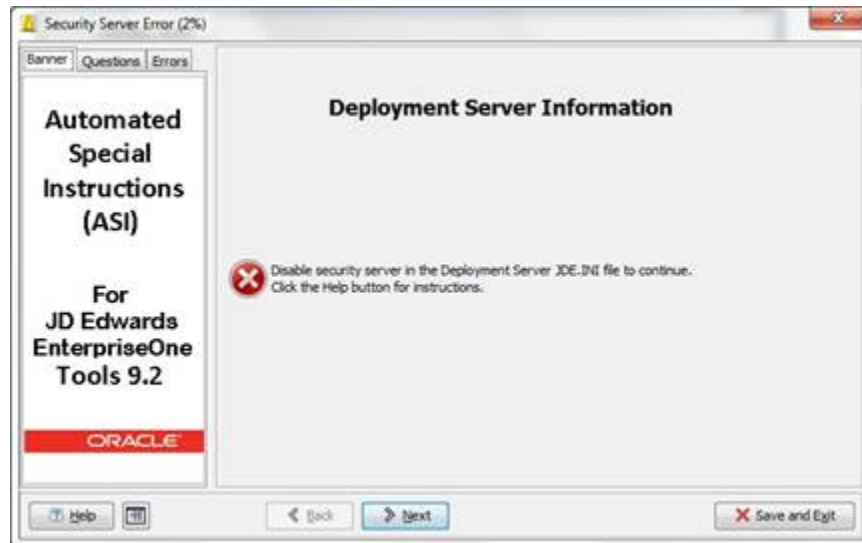
Errors and Warnings

The ASI performs verifications prior to and during the installation for:

- Security
- EnterpriseOne Tools Release
- Planner ESU
- EnterpriseOne Tools Rollup ESU
- Data source owner and password
- Deployment location
- Package Release
- Transaction data

Security

The following dialog box displays if security server is enabled on the Deployment Server.



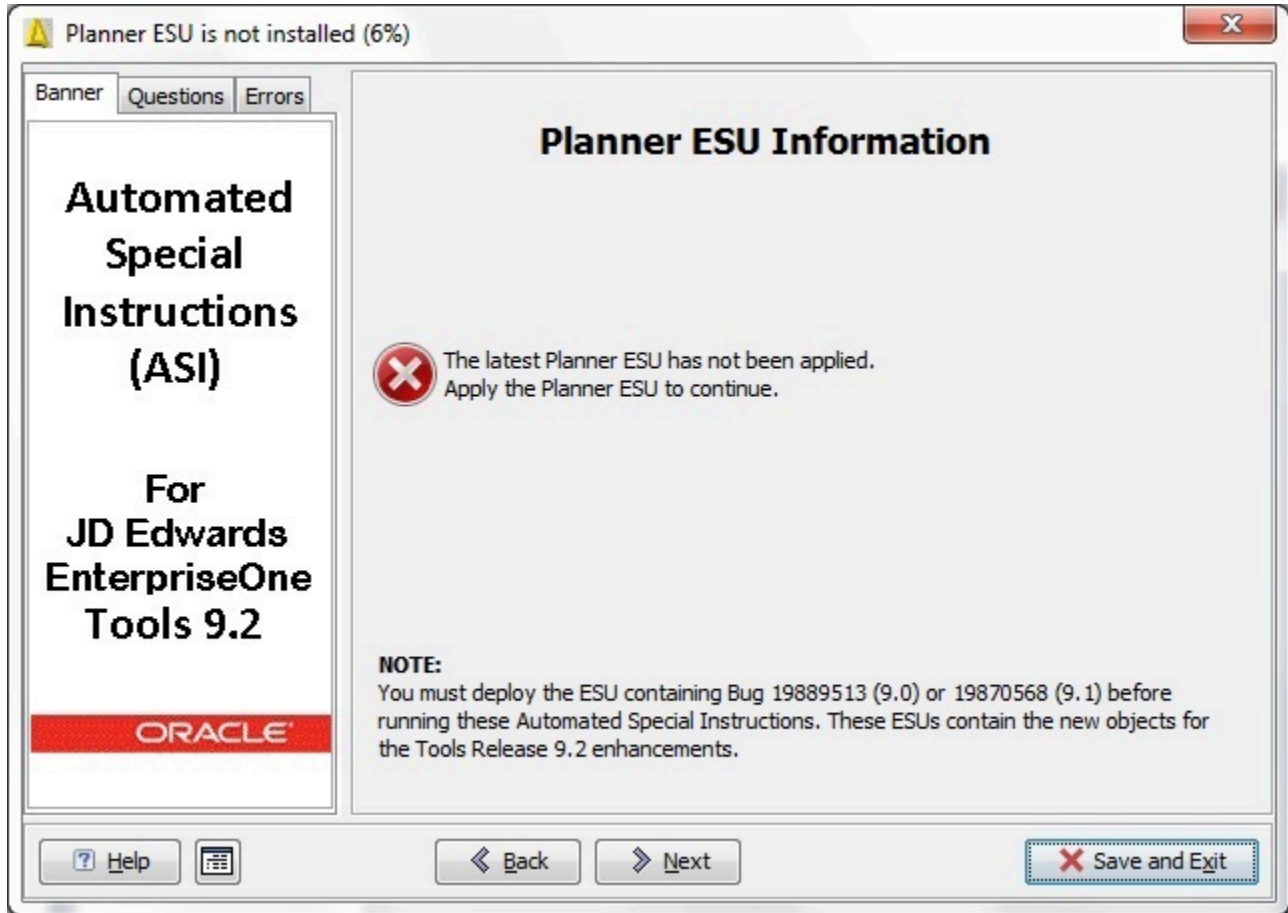
EnterpriseOne Tools Release

The following dialog box appears if the Deployment Server EnterpriseOne Tools Release is prior to 9.2.



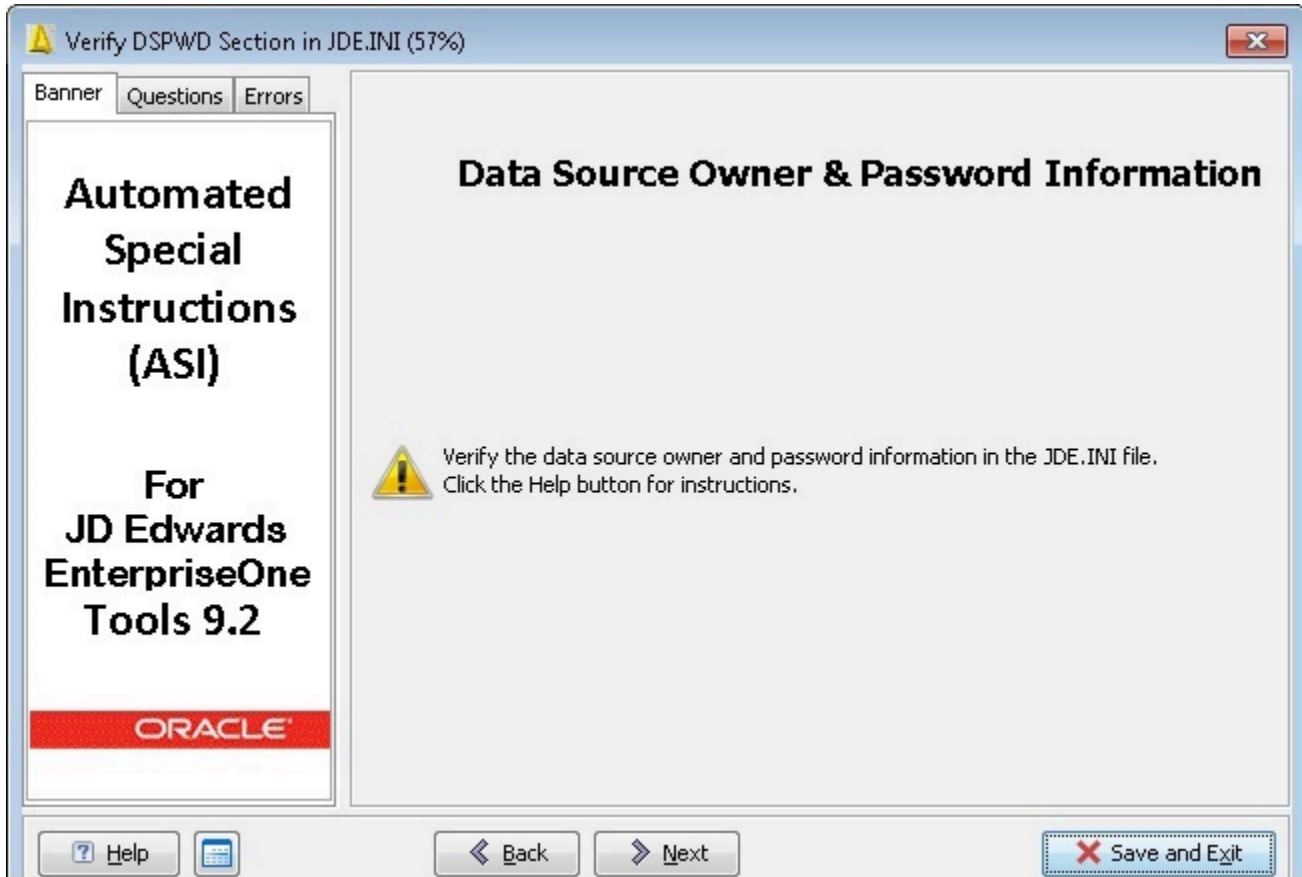
Planner ESU

The following dialog box displays when the Planner ESU is an older version. Processing will continue when ASI detects the latest Planner ESU.

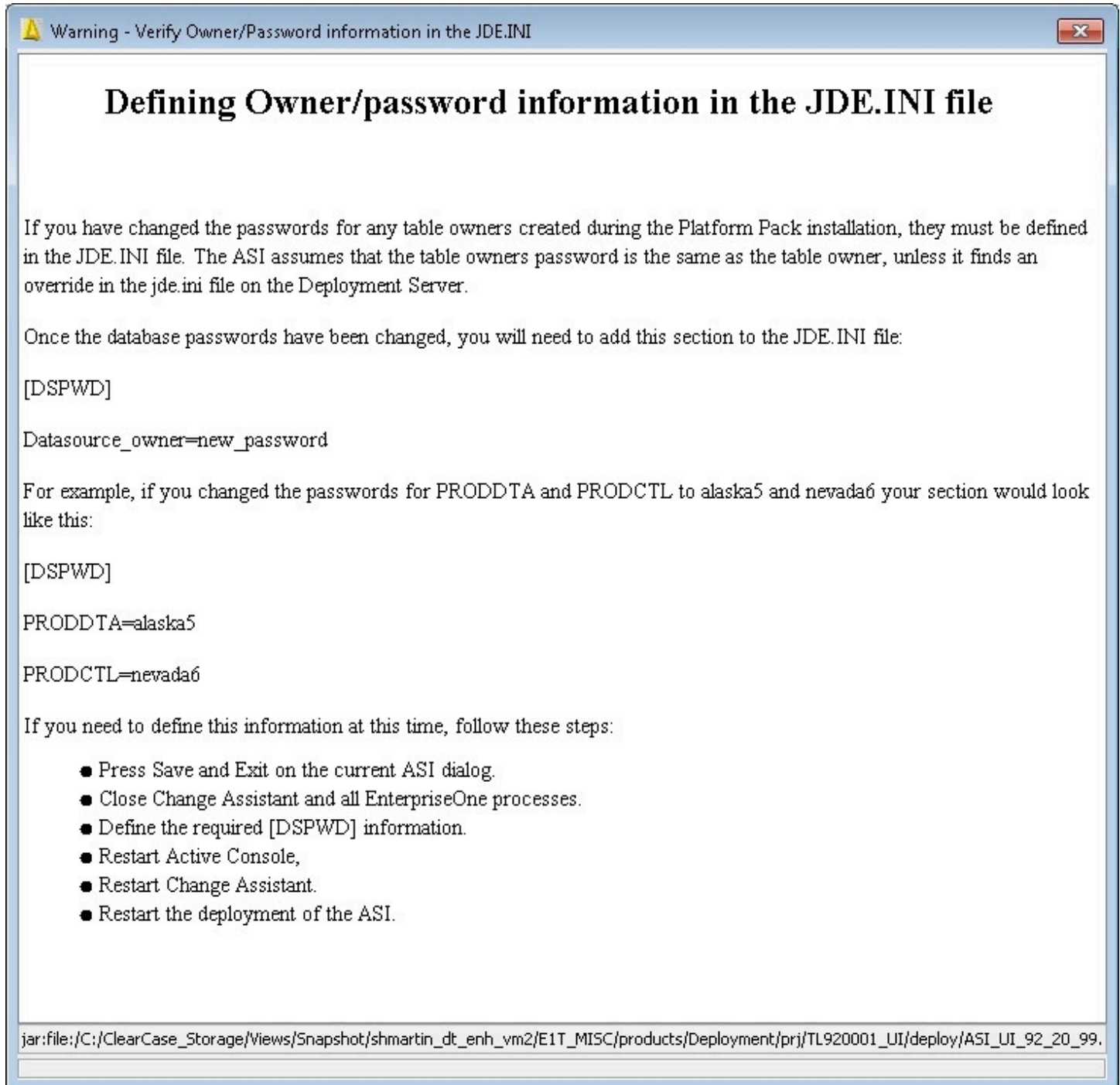


Data Source Owner and Password

The following dialog box displays if security server is disabled.



Clicking the Help button displays the following:



Warning - Verify Owner/Password information in the JDE.INI

Defining Owner/password information in the JDE.INI file

If you have changed the passwords for any table owners created during the Platform Pack installation, they must be defined in the JDE.INI file. The ASI assumes that the table owners password is the same as the table owner, unless it finds an override in the jde.ini file on the Deployment Server.

Once the database passwords have been changed, you will need to add this section to the JDE.INI file:

```
[DSPWD]
Datasource_owner=new_password
```

For example, if you changed the passwords for PRODDTA and PRODCTL to alaska5 and nevada6 your section would look like this:

```
[DSPWD]
PRODDTA=alaska5
PRODCTL=nevada6
```

If you need to define this information at this time, follow these steps:

- Press Save and Exit on the current ASI dialog.
- Close Change Assistant and all EnterpriseOne processes.
- Define the required [DSPWD] information.
- Restart Active Console,
- Restart Change Assistant.
- Restart the deployment of the ASI.

jar:file:/C:/ClearCase_Storage/Views/Snapshot/shmartin_dt_enh_vm2/E1T_MISC/products/Deployment/prj/TL920001_UI/deploy/ASI_UI_92_20_99.

Deployment Location

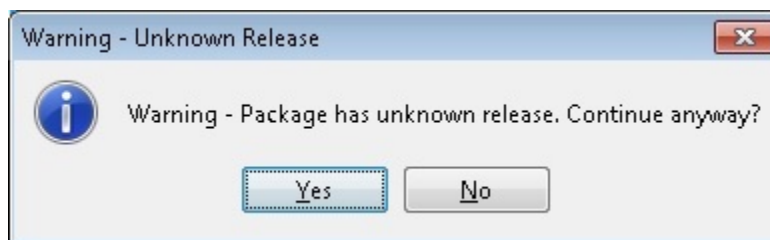
Note: Deployment is not allowed on a development client.



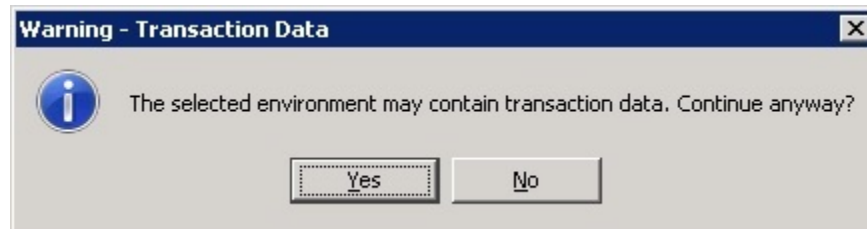
Perform deployment from a Deployment Server.

Package Release

Click Yes.



Transaction Data



If this dialog box appears, click Yes.

EnterpriseOne Tools Rollup ESU

The following prompt displays when the ASI recognizes that the Deployment Server has an older EnterpriseOne Tools Application Rollup ESU. Processing will continue when the ASI detects the current EnterpriseOne Tools Rollup ESU.

