

Test Case Management  
Oracle Banking Corporate Lending  
Release 14.7.6.0.0  
Part No. G32336-01  
April 2025



---

## Contents

1	Preface .....	3
1.1	Audience .....	3
1.2	Related Documents.....	3
2	Introduction .....	1
3	Overview of Test Case Management.....	1
4	Login .....	2
5	Home Page.....	3
5.1	Browser.....	3
5.2	Windows .....	4
5.3	Launch FC UBS.....	4
5.4	User Preferences.....	5
5.5	Change Password .....	5
5.6	Sign Out.....	6
6	Block Detail Upload.....	6
7	Excel Template Generation.....	7
8	Test Case Definition .....	8
9	Test Case Upload .....	11
10	Create Request .....	13
11	Test Case Execution .....	13
12	Run Chart Master .....	14
13	Run Chart Execution .....	16
14	Derivation .....	18
15	Migration of Data using TCM Tool .....	18

---

# 1 Preface

This document describes the Test Case Management module in Oracle FLEXCUBE Development Workbench for Universal Banking and guides the developers/testers on how to use this feature.

## 1.1 Audience

This document is intended for FLEXCUBE Application developers/users that use Developer Workbench to develop various FLEXCUBE components.

To Use this manual, you need conceptual and working knowledge of the below:

<i>Proficiency</i>	<i>Resources</i>
FLEXCUBE Functional Architecture	Training programs from Oracle Financial Software Services.
FLEXCUBE Technical Architecture	Training programs from Oracle Financial Software Services.
FLEXCUBE Object Naming conventions	Development Overview Guide
Working knowledge of Web based applications	Self Acquired
Working knowledge of Oracle Database	Oracle Documentations
Working knowledge of PLSQL developer	Respective vendor documents
Working knowledge of PLSQL & SQL Language	Self Acquired
Working knowledge of XML files	Self Acquired

## 1.2 Related Documents

[Development Workbench – Administration](#)

[Development Workbench – Getting Started](#)

## 2 Introduction

This document provides information on:

- [Chapter 2 , "Introduction"](#)
- [Chapter 3 , "Overview of Test Case Management"](#)
- [Chapter 4 , "Login"](#)
- [Chapter 5 , "Home Page"](#)
- [Chapter 6 , "Block Detail Upload "](#)
- [Chapter 7 , "Excel Template Generation "](#)
- [Chapter 8 , "Test Case Definition"](#)
- [Chapter 9 , "Test Case Upload"](#)
- [Chapter 10 , "Create Request"](#)
- [Chapter 11 , "Test Case Execution"](#)
- [Chapter 12 , "Run Chart Master"](#)
- [Chapter 13 , "Run Chart Execution"](#)
- [Chapter 14 , "Derivation"](#)
- [Chapter 15 , "Migration of Data using TCM Tool "](#)

## 3 Overview of Test Case Management

This is a tool (provided as part of Developer Workbench), which can be used to save Test plans and to execute the test cases. This is very helpful for a Testing team, where they need not do maintenance for every release. User can execute the Run Charts & proceed with transactions.

In this tool, user can store FLEXCUBE Maintenance/Online Screens Test Cases into the database by uploading them in the form of Excel sheets to the TCM tool. These Test Cases can be logically grouped together to build a Run Chart to run all test cases with a single operation. Test Case Management system has been designed to automate the ITRs within each release. This tool would reduce lot of time and effort of the Testing team.

Below sections explain the common administrative features of Development Workbench. If user is already comfortable with these, chapter 4 and 5 can be skipped

### **Main functions of Development Workbench Admin User:**

- Creating a new release
- Creating Release admin for the specific release

### **Main functions of Release Admin User:**

- Creating User ID's

### **Main functions of TCM User:**

- Block Detail Upload
- Test Case Definition
- Test Case Upload
- Create Request
- Test Case Execution
- Run chart Definition
- Run Chart Execution

## 4 Login

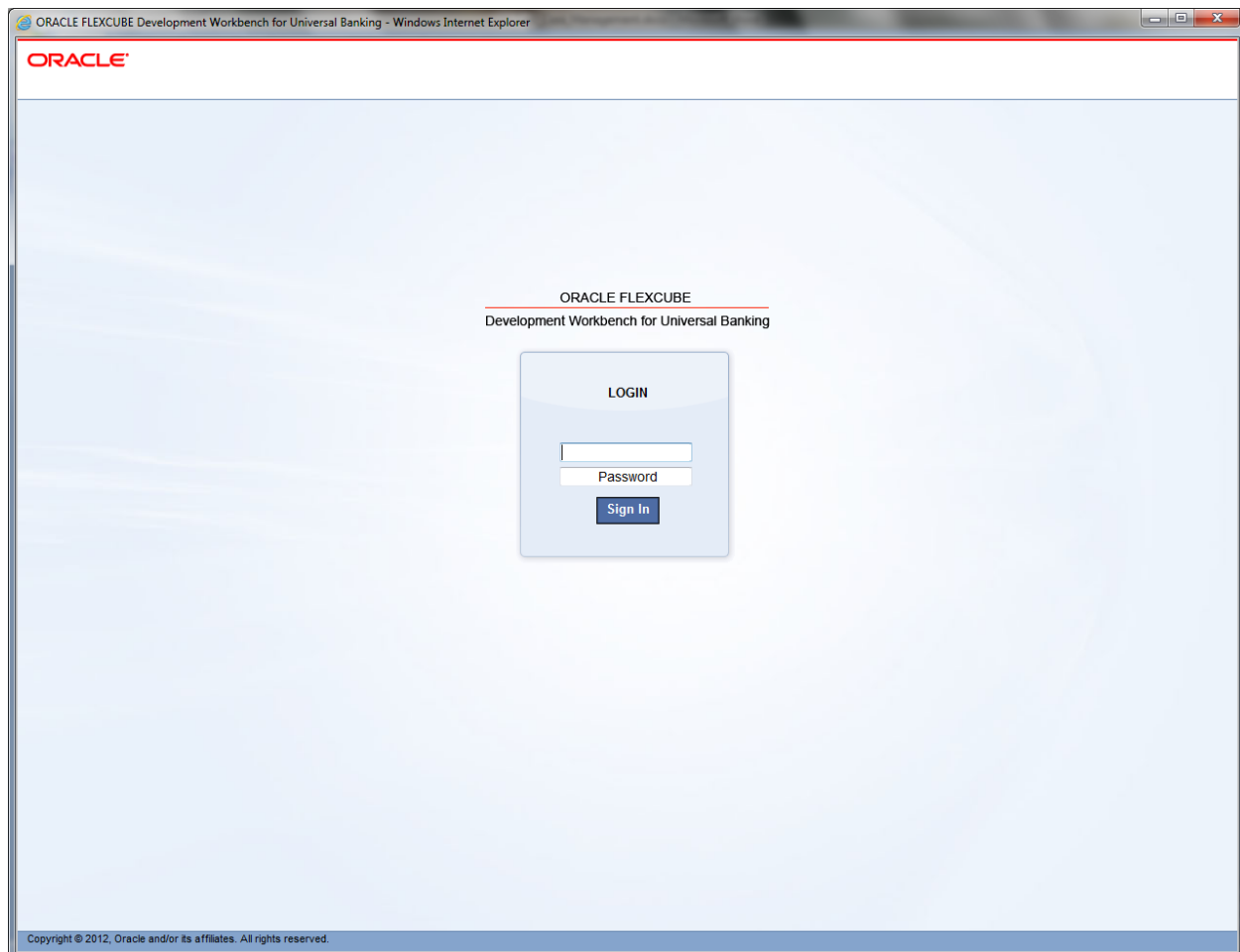


Fig 4.1: Login Screen

Only the Release Admin has rights to create new Users. Development Workbench Admin will create a new release and assign one user as Release admin for that release.

Note: User should make sure that the same User ID is created in FLEXCUBE as well.

## 5 Home Page

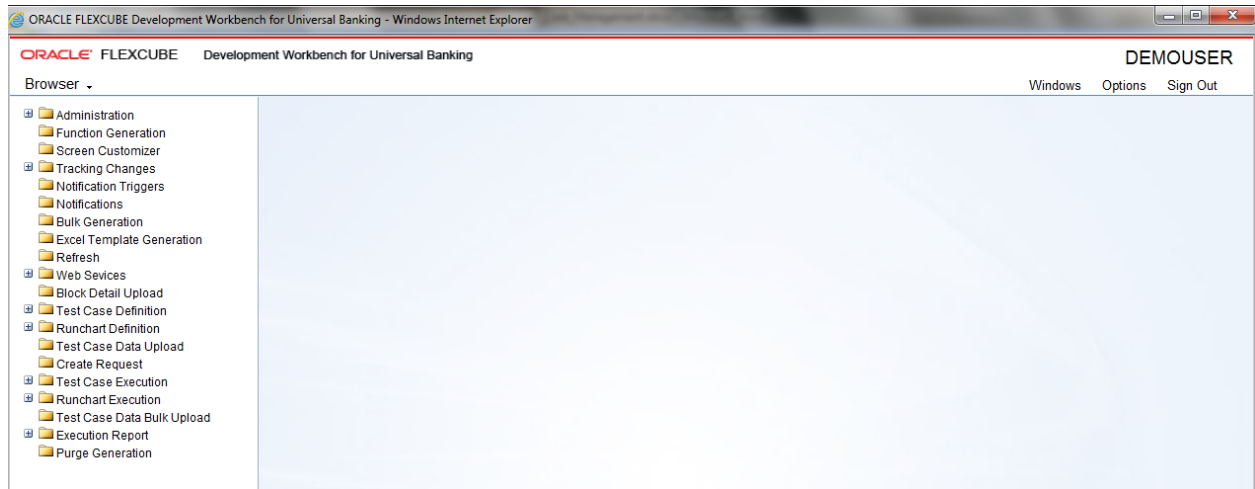


Fig 5.1: The Home Page, after clicking on Browser

### 5.1 Browser

In this screen user can view Menu by clicking on **Browser**.

## 5.2 Windows

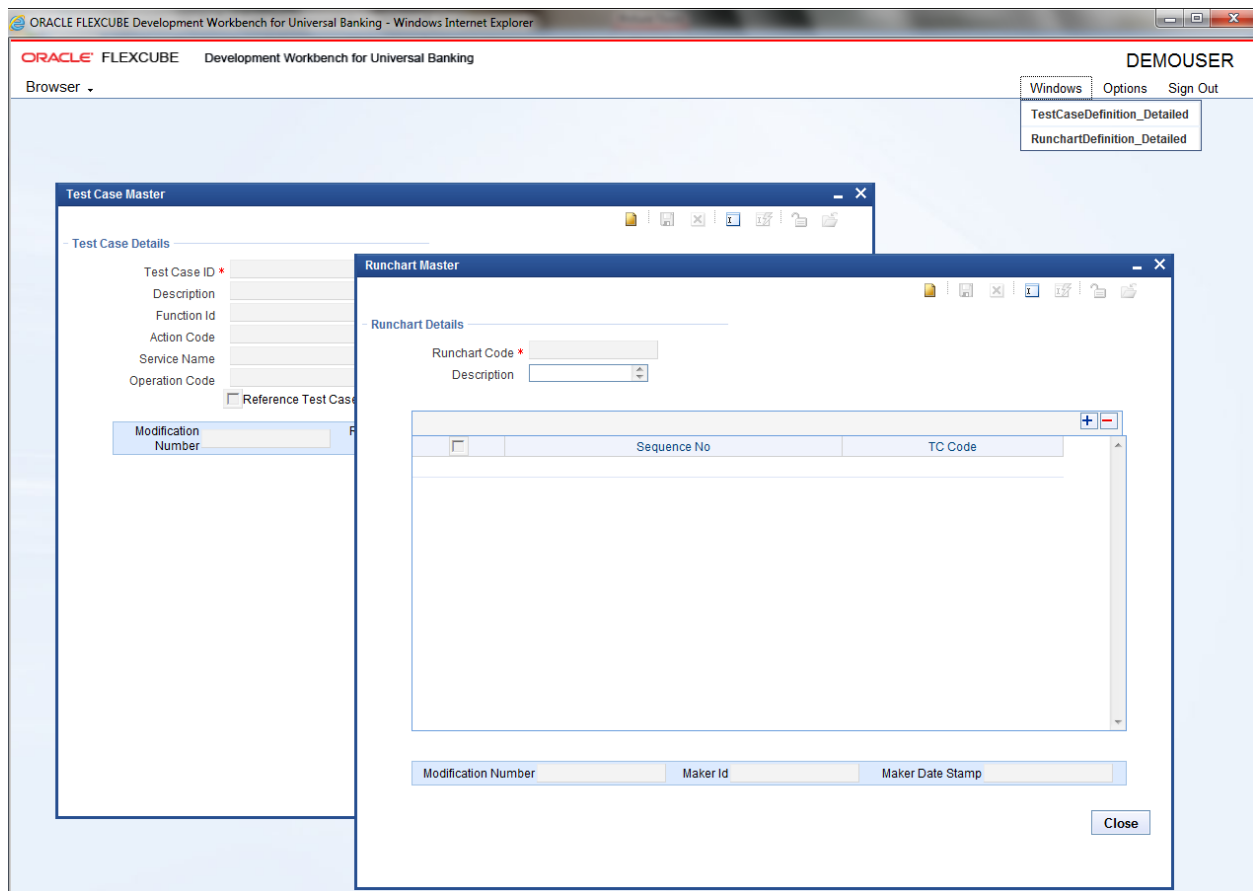


Fig 5.2.1: The open Windows

This is useful to swap between the windows.

## 5.3 Launch FC UBS

On click of this link the FCUBS Application is launched. The FCUBS link is given at the time of Release creation which can be modified at any stage of release by the release Admin.

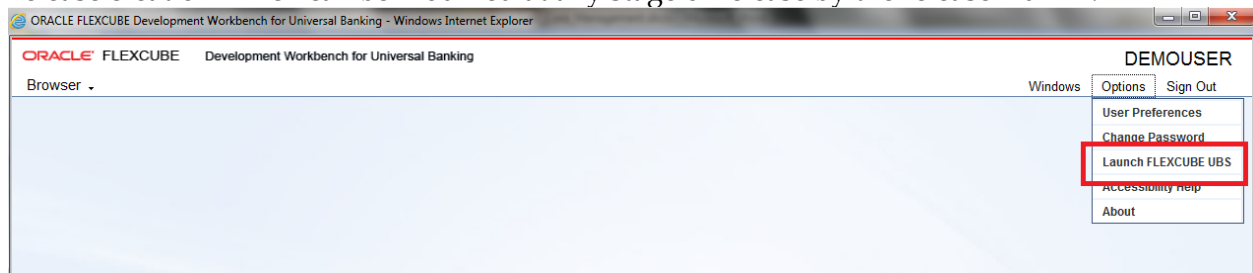


Fig 5.3.1: Launch FCUBS

## 5.4 User Preferences

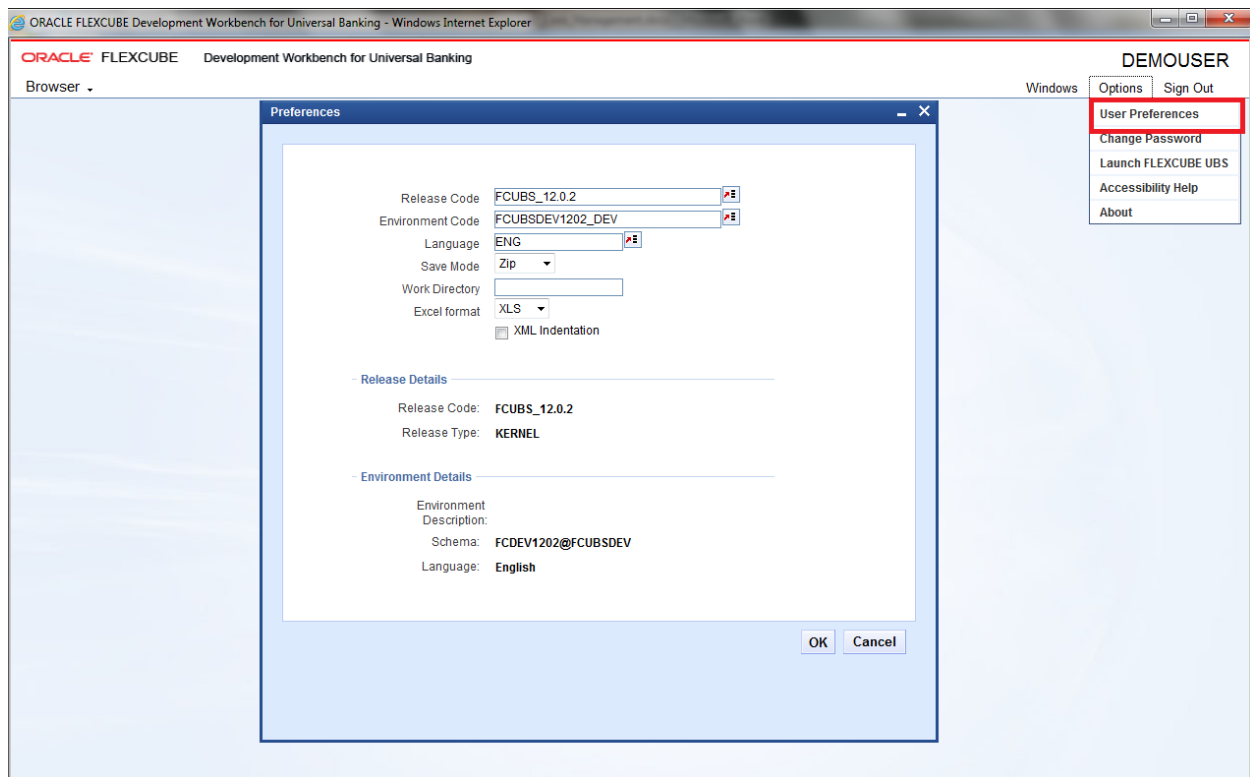


Fig 5.4.1: The User Preferences

This screen shows the current user release & schema details. User can get this information on clicking on User Preferences. User will also be able to Switch Between releases and Environments Using the User Preferences option, near the top right corner of the screen. On clicking the Choose button, LOV buttons next to Release code and Environment code will appear and user can view the releases and the corresponding environments and can map accordingly.

## 5.5 Change Password

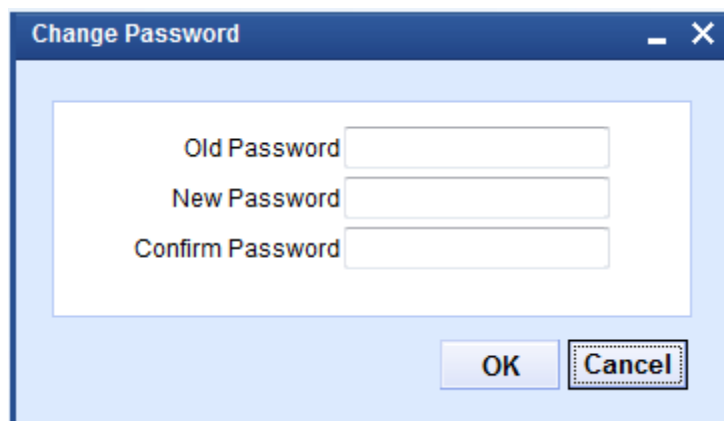




Fig 5.5.1: The Screen to Change Password

User can change password by clicking on Change Password.

## 5.6 Sign Out

The user can sign Out of TCM. On Successful Sign Out, the Login Page is launched.

# 6 Block Detail Upload

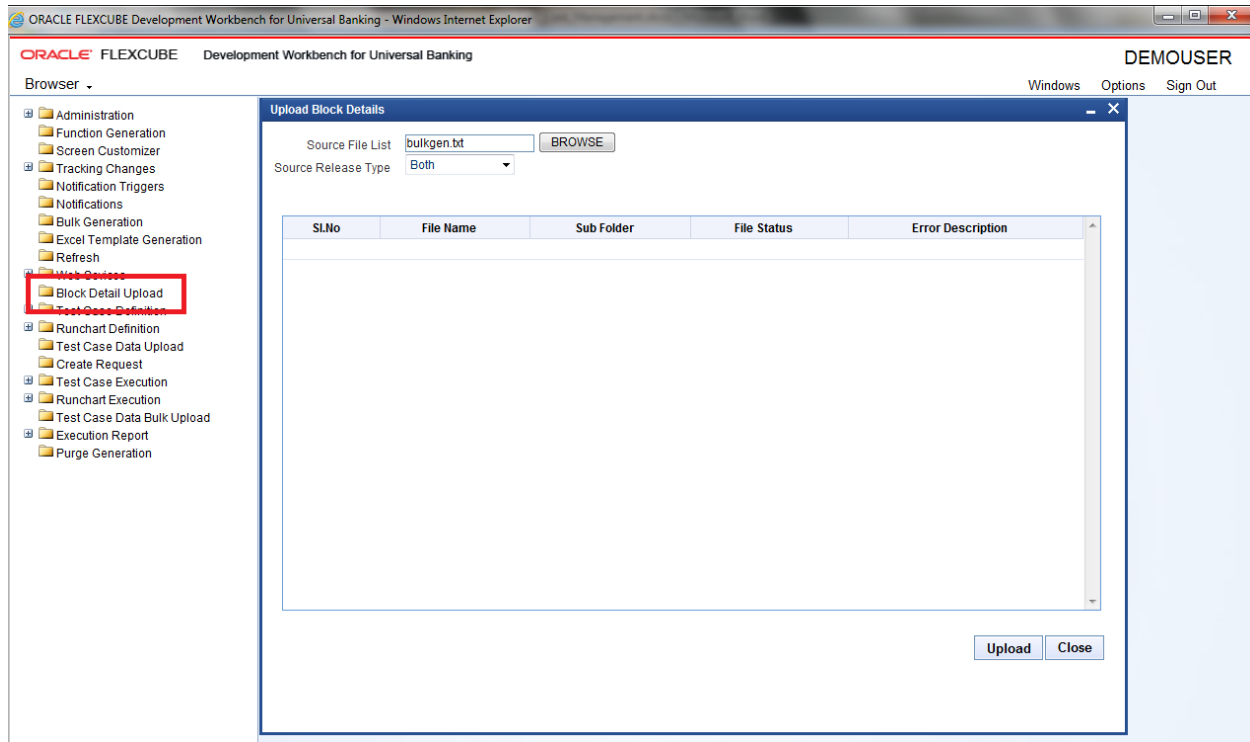


Fig 6.1: The Upload Block Details Screen

TCM internally requires the Blocks and fields Details of a function Id. These details can be extracted from the function Ids \_RAD.xml through this screen. A text file containing the list of RAD XML's to be extracted has to be prepared along with all of its call forms. The text file should contain the absolute location of the RAD Xml.

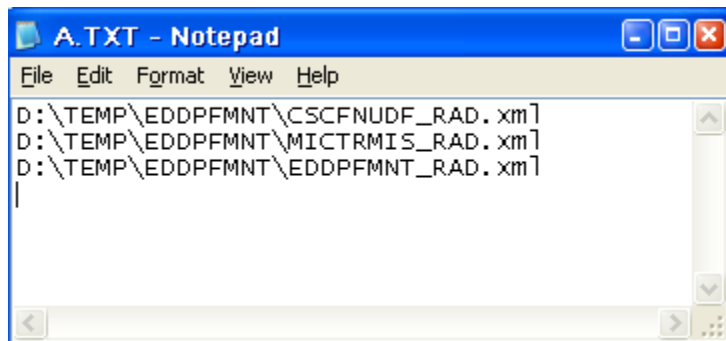


Fig 6.2: The List of RAD xmls

Note: To generate a text file which contains a list of RADXML file user has to follow these steps:

- Command Prompt > Specific folder where RADXMLS are stored >
- DIR /B /S >Files.txt

Tables: TCTM\_BLOCK\_DETAILS, TCTB\_BLOCK\_DETAILS, TCTM\_FID\_CALL\_FORMS, TCTM\_FID\_FUNCTIONS, TCTM\_BLOCK\_IO\_TAGS

Note: Block detail information needs to be re-generated every time there is a change in the source.

*Call form has to be placed above the main function id in the source file list*

## 7 Excel Template Generation

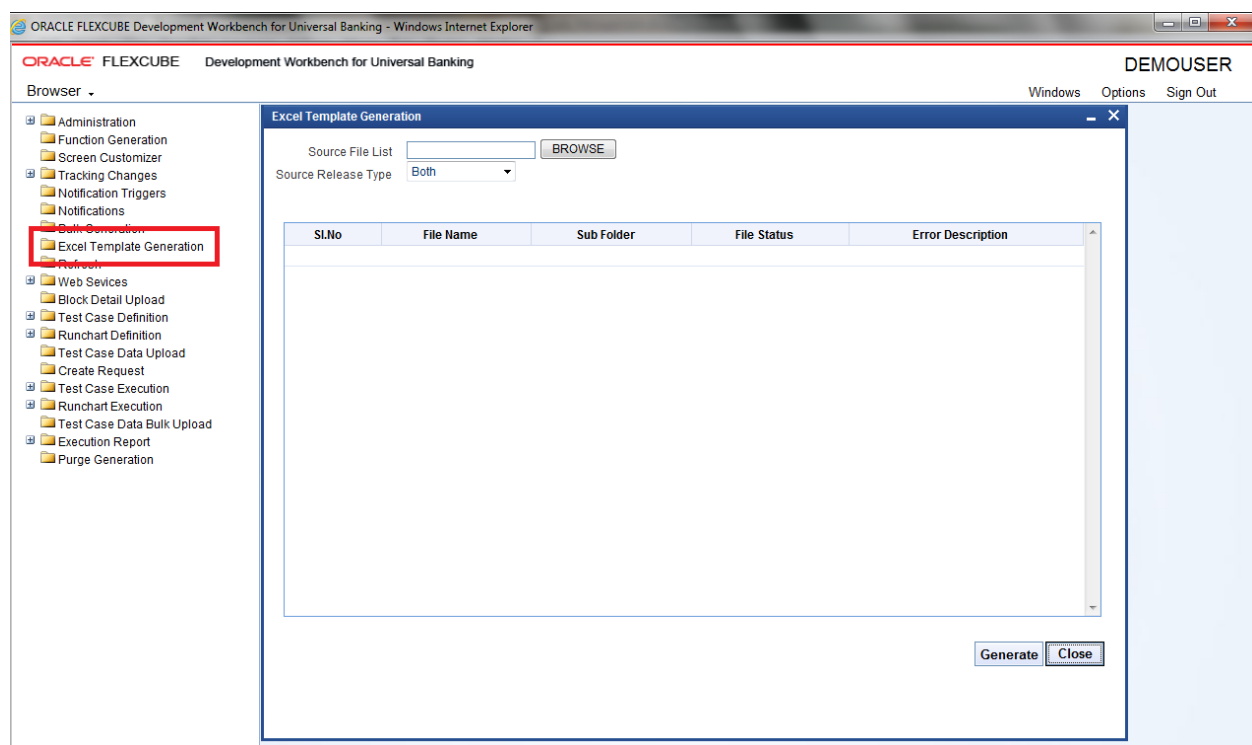


Fig 7.1: The Excel template Generation Screen

Similar to block detail upload, a text file which contains the list of RADXMLS along with path, has to be uploaded here to get the excel templates.

Note: Excel template needs to be re-generated every time there is a change in the source after upload of the new block details.

## 8 Test Case Definition

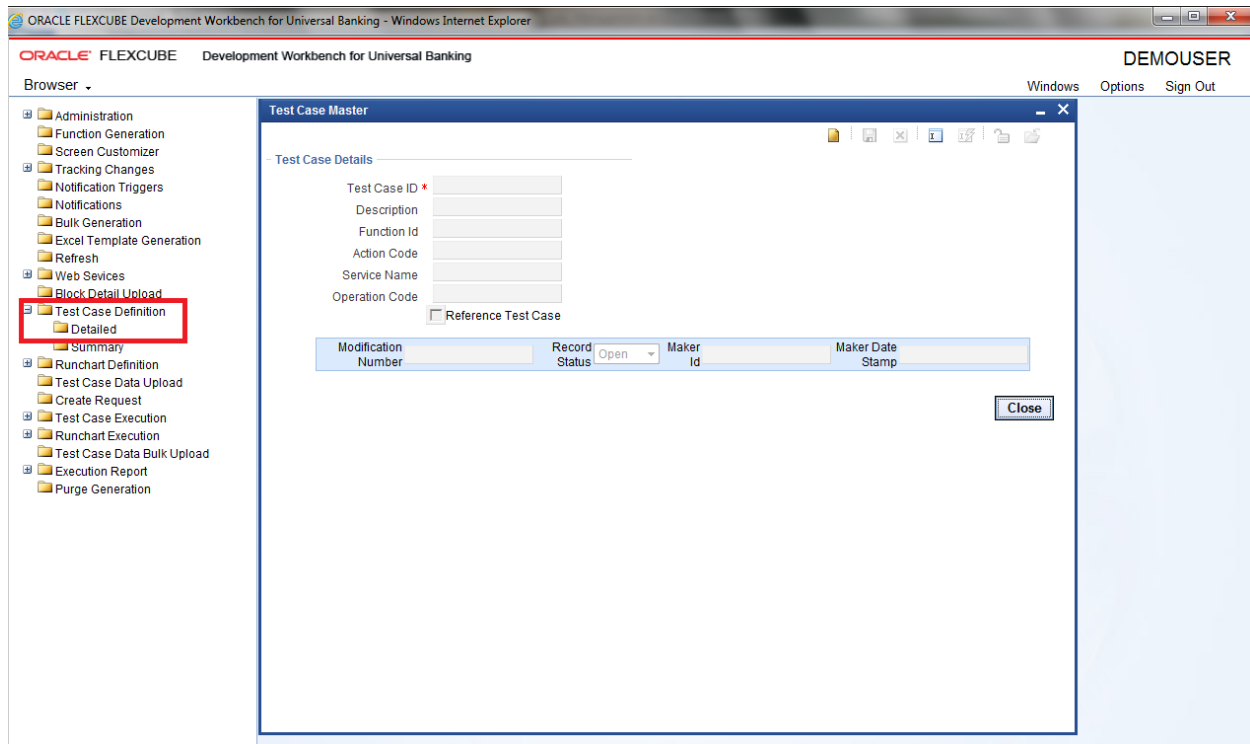


Fig 8.1: The Test Case Master Screen

The first command button should be used to create a new test case.

Fourth command button can be used to query data (Similar to F7 in FLEXCUBE)

Fifth command button can be used to get the queried data (Similar to F8 in FLEXCUBE)

Action Code: Can be used to New/Modify/Reverse/Liquidate/Auth/Close

Tables: TCTM\_TC\_MASTER, TCTB\_TC\_MASTER

Note: Function Id and Action code combination is used to take care of FCUBS requests while Service Name and Operation Code is used to take care of Web Services requests.

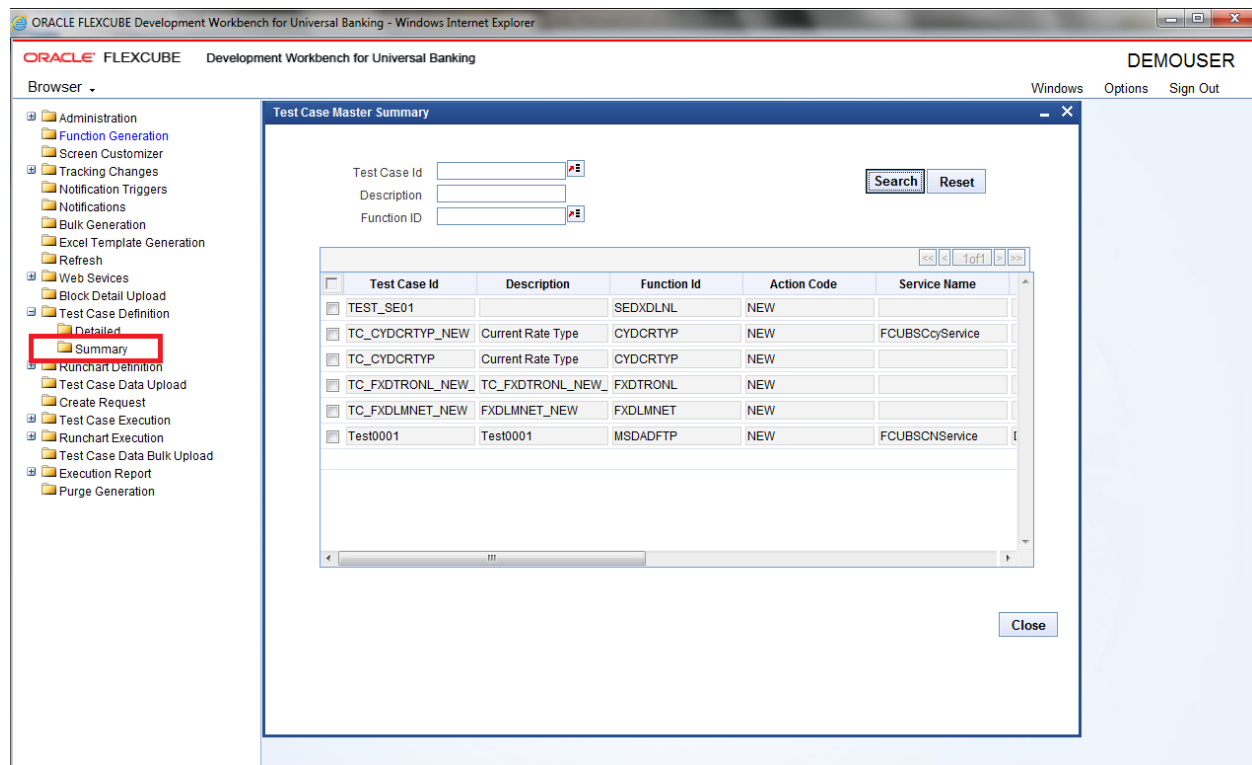


Fig 8.2: The Summary Screen

Test Case Master

- Test Case Details

Test Case ID \* TC\_CYDCRTYP\_NEW

Description Current Rate Type

Function Id CYDCRTYP

Action Code NEW

Service Name FCUBSCcyService

Operation Code

☐ Reference Test Case

Modification Number 2

Record Status Open

Maker Id DEMO

Maker Date Stamp 2013-02-28 20:26:39

Close

Fig 8.3: The Detailed Screen

## 9 Test Case Upload

ORACLE FLEXCUBE Development Workbench for Universal Banking - Windows Internet Explorer

ORACLE FLEXCUBE Development Workbench for Universal Banking

DEMOUSER

Windows Options Sign Out

Browser

Administration

Function Generation

Screen Customizer

Tracking Changes

Notification Triggers

Notifications

Bulk Generation

Excel Template Generation

Refresh

Web Services

Block Detail Upload

Test Case Definition

Test Case Data Upload

Create request

Test Case Execution

Runchart Execution

Test Case Data Bulk Upload

Execution Report

Purge Generation

Test Case Upload

Test case excel upload

Test Case ID \* TC\_CYDCRTYP\_NEW

Description Current Rate Type

Excel Sheet \*

Upload File

Show New Excel

Show Old Excel

Function Id CYDCRTYP

Branch Code 000

Action Code NEW

Operation Code

Service Name FCUBSCcyService

Origin Release FCUBS\_12.2\_ACESAB

Reference Test Case

Close

Fig 9.1: The Test Case Upload Screen

This is the screen to upload the respective excel template along with data. If multiple columns are there in Excel sheet, TCM will create multiple Test Cases.

For example:

TEST CASE: COUNTRY\_CODES

If user uploads data with two columns – for INDIA & USA

System will create 2 test cases as

- **COUNTRY\_CODES\_01** (this TC to create country - INDIA)
- **COUNTRY\_CODES-02** (this TC to create country - USA)

Tables: TCTB\_BLOCK\_DATA, TCTM\_BLOCK\_DATA

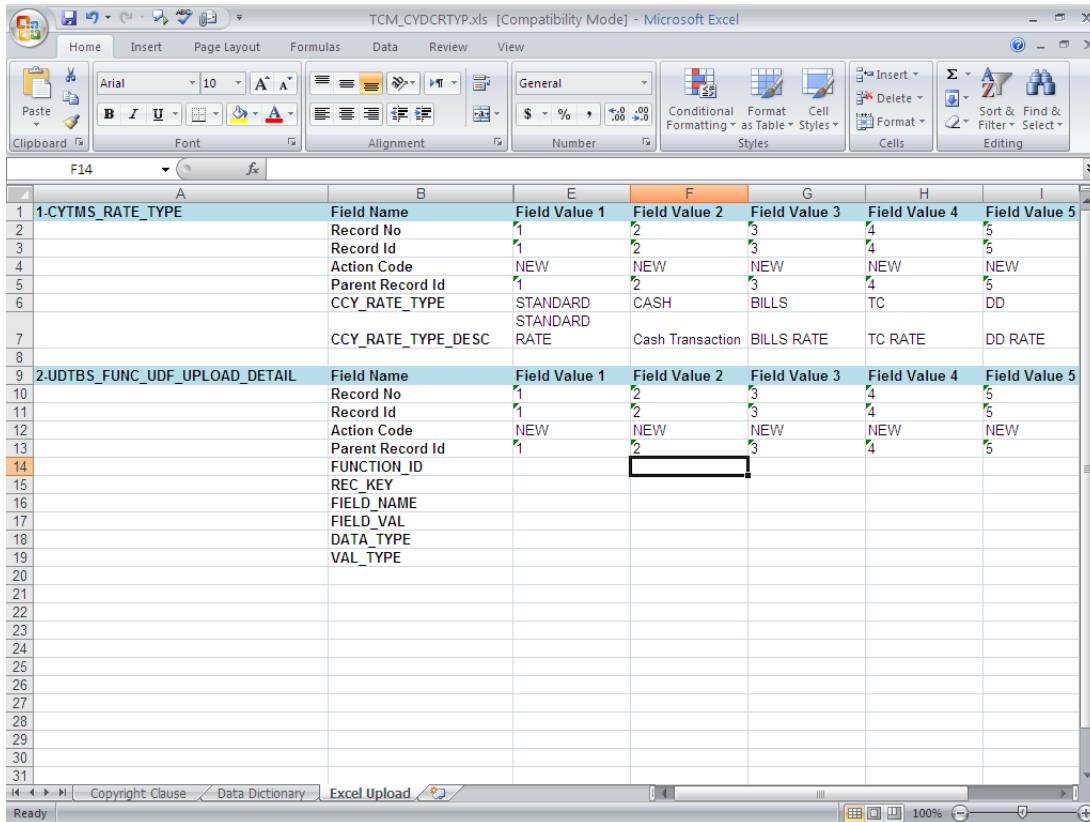


Fig 9.2: Excel sheet – to upload into TCM

Take note of following points while uploading excel sheet.

- The Parent Record Id in the Master Data block's sheet should be null
- The Parent Record Id in Non-Master Blocks should not be null
- All data needs to be input into the sheet as String only. I.e. for Date and Number fields, they need to be input with an apostrophe before the value. E.g. '2010/02/02 or '9087 etc
- Excel sheet should be 2003 version (File extension name should be .xls)

Note: For proper display of excel sheet in browser, the user needs to ensure the following In Windows explorer Folder Options → File Types

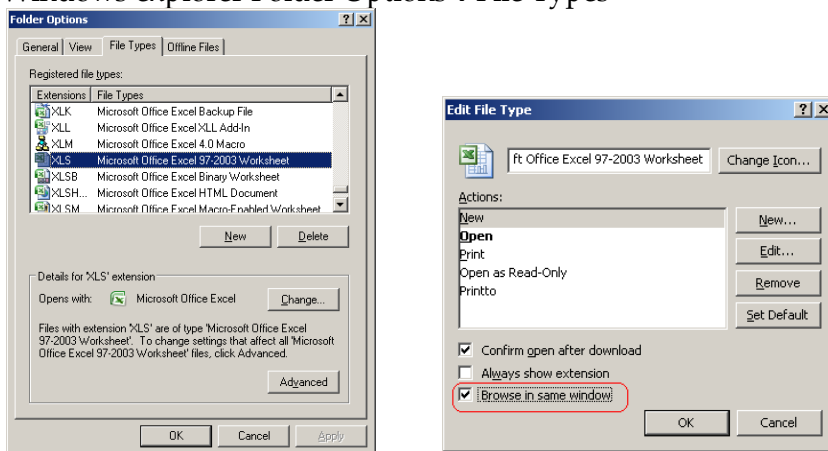


Fig 9.3: Browse in Same Window Checkbox

The Browse in Same Window Checkbox needs to be checked.

## 10 Create Request

The FLEXCUBE XML or Web service Xml can be viewed at this stage. The Xml is constructed from the Excel sheet that was uploaded in the previous stage. Only Execute Query operation is available.

## 11 Test Case Execution

ORACLE FLEXCUBE Development Workbench for Universal Banking - Windows Internet Explorer

ORACLE FLEXCUBE Development Workbench for Universal Banking

DEMOUSER

Windows Options Sign Out

Browser

Administration

- Function Generation
- Screen Customizer
- Tracking Changes
- Notification Triggers
- Notifications
- Bulk Generation
- Excel Template Generation
- Refresh
- Web Services
- Block Detail Upload
- Test Case Definition
- Runchart Definition
- Test Case Data Upload
- Create Request
- Test Case Execution**
- Detailed
- Summary
- Runchart Execution
- Test Case Data Bulk Upload
- Execution Report
- Purge Generation

Test Case Execution

Exec Ref No \*

Test Case Id TCTC\_CYDCRTYP\_NEV

Description Current Rate Type

Module Id

Function Id CYDCRTYP

UI name

Action Code NEW

Service Name FCUBSCcyService

Operation Code IOPK

Msg Exchange Pattern

Origin Release FCUBS\_12.2\_A04

Source Type Flexcube

Action on override Ignore

Auto authorization

Execution Status Unprocessed

Errors

Execution Time

PK Values

Request Response

Close

Fig 11.1: Test Case Execution screen

Once the data is uploaded successfully, test case can be executed from this screen.

Test Case ID: Each execution generates a unique reference number, which may be used later for viewing the status of execution

Source Type: Source type can be FLEXCUBE/Web Services, depending on whether the execution is to be done from FLEXCUBE or and external System.

Action on override: In case overrides occur for a function id, the user may either ignore those overrides, or stop the execution and give Error status.

Auto Authorization: On selecting this check box, executed records will as authorized records.

Execution Status: This will show whether record is executed successfully or not.

Tables: TCTB\_TC\_EXEC\_MASTER,, TCTB\_TC\_CURR\_DATA



## 12 Run Chart Master

ORACLE FLEXCUBE Development Workbench for Universal Banking - Windows Internet Explorer

ORACLE FLEXCUBE Development Workbench for Universal Banking DEMOUSER

Windows Options Sign Out

Browser

- Administration
  - Function Generation
  - Screen Customizer
- Tracking Changes
  - Notification Triggers
  - Notifications
  - Bulk Generation
  - Excel Template Generation
  - Refresh
- Web Services
  - Block Detail Upload
  - Test Case Definition
    - Detailed
    - Summary
  - Test Case Data Upload
  - Create Request
  - Test Case Execution
  - Runchart Execution
  - Test Case Data Bulk Upload
  - Execution Report
  - Purge Generation

**Runchart Master**

**Runchart Details**

Runchart Code \* RC\_NEW

Description RC\_NEW

Sequence No	TC Code
	TC_CYDCRTYP_NEW
	TC_CYDCRTYP

Modification Number Maker Id Maker Date Stamp


Close

Fig 12.1: Run Chart Master Screen

In this screen user can add multiple test cases and make a single Run Chart to execute at one shot. User has to enter sequence number, it's a mandatory.

Tables: TCTM\_RC\_MASTER, TCTM\_RC\_TCS

**Runchart Master Summary**

Runchart Id  

Description

**Search** **Reset**

<< < 1 of 1 > >>

<input type="checkbox"/>	Runchart Id	Description	
<input type="checkbox"/>	RC_NEW	RC_NEW	FCUBS_1:
<input type="checkbox"/>	RC_NEW1	RC_NEW1	FCUBS_1:

**Close**

Fig 12.2: Run Chart Summary with list of Run Charts along with Description

## 13 Run Chart Execution

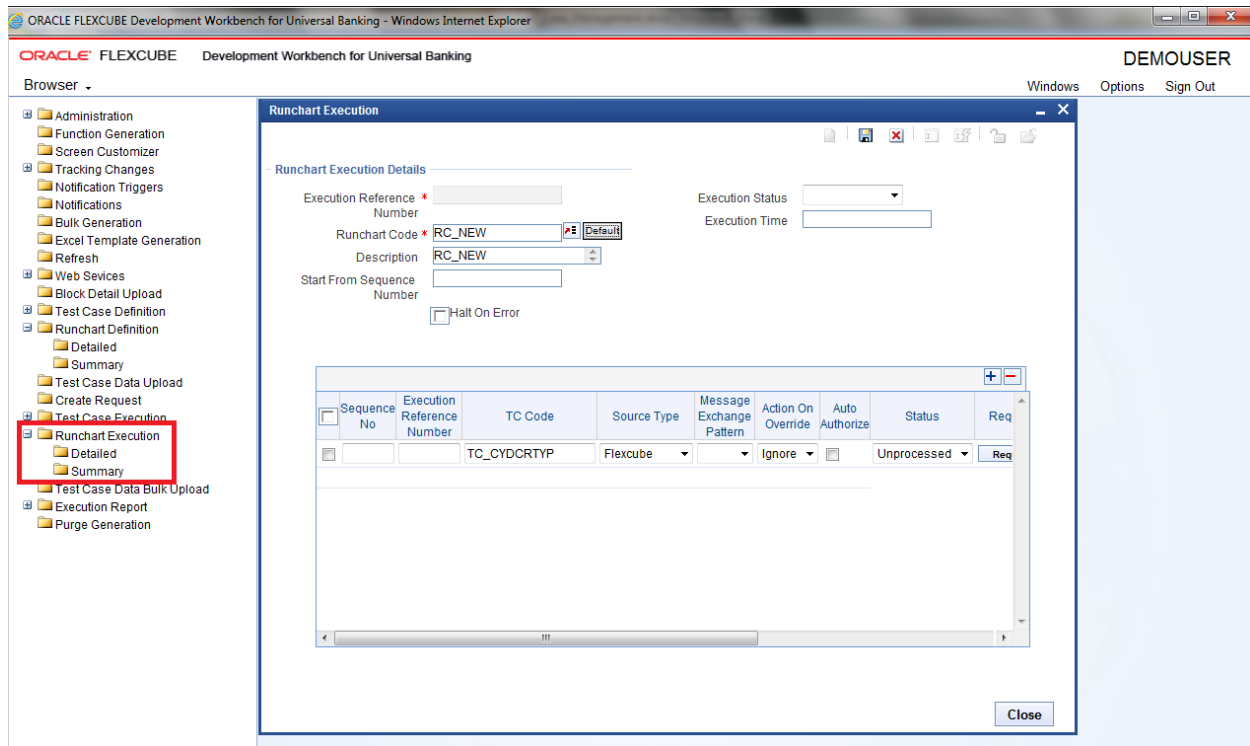


Fig 13.1: Run Chart Execution Screen

User can execute the Run Chart in this screen. If user doesn't want execute with auto auth, user can uncheck the check box.

Once Run Chart is executed user can see the status in the screen itself.

Request: User can check request which has been received by TCM

Response: User can check the TCM response for the request on clicking this command button. In this screen user can find the status of the execution of individual test case and the reason for failure.

Note:

User can generate around 20 test-cases at a time.

Tables: TCTB\_RC\_EXEC\_MASTER, TCTB\_TC\_EXEC\_MASTER,, TCTB\_TC\_CURR\_DATA

Runchart Execution Summary

Exec Ref No

Rc Code

	Exec Ref No	Rc Code	
<input type="checkbox"/>	RCEX13063000000000	RC_NEW1	U

Fig 13.2: Run Chart Execution Summary

## 14 Derivation

When the input for a test case is dependent on the output of another test case, the application facilitates usage of derivation to link the input to the output of another test case. For example to make a Run Chart of Contract Execution & Liquidation, in liquidation test case we have to enter Contract number instead we can put the path as below mentioned.

D:TESTCASENAME:BLOCKNAME:FIELDNAME

Example:

D:TC\_FXDTRONL\_NEW\_CONTRACT\_FSC2:BLK\_CONTRACT\_MASTER:CONTREFNNO

## 15 Migration of Data using TCM Tool

Migration of data between releases is subject to the following conditions:

1. If a screen is non -extensible in Release 1 and gets converted to an extensible screen in Release 2, then migration of data from Release 1 to Release2 is not possible through the TCM tool.
2. If a non-extensible screen in Release 1 remains non-extensible in Release2, then migration of data through TCM Tool is possible.
3. If an extensible screen in Release 1 remains extensible in Release2, then migration of data through TCM Tool is possible.

The following are the steps to achieve the migration of data from Release1 to Release2:

1. Export the data using the export to excel functionality in FCUBS.
2. Create test cases in TCM (having Release1 sources) for the function id and upload the excel sheet.
3. Create Run Chart if required to sequence execution of the Test Cases.
4. Upload the new RADXMLs of Release 2 using the Block Detail Upload functionality.
5. Modify the test cases where there are changes in the field definition. During modification, the excel sheet would show the new fields with blank values. The TCM tool also provides a facility to make modification only for specific records/test cases.
6. Run the test case / run chart as appropriate. On execution, the modified data gets updated in the database.

If multiple releases is to be created in a single TCM schema, then data from the base release can be migrated to the child release during the creation of release.



Test Case Management  
[April] [2025]  
Version 14.7.6.0.0

Oracle Financial Services Software Limited  
Oracle Park  
Off Western Express Highway  
Goregaon (East)  
Mumbai, Maharashtra 400 063  
India

Worldwide Inquiries:  
Phone: +91 22 6718 3000  
Fax: +91 22 6718 3001  
[www.oracle.com/financialservices/](http://www.oracle.com/financialservices/)

Copyright © 2007, 2025, Oracle and/or its affiliates. All rights reserved.

Oracle and Java are registered trademarks of Oracle and/or its affiliates. Other names may be trademarks of their respective owners.

**U.S. GOVERNMENT END USERS:** Oracle programs, including any operating system, integrated software, any programs installed on the hardware, and/or documentation, delivered to U.S. Government end users are "commercial computer software" pursuant to the applicable Federal Acquisition Regulation and agency-specific supplemental regulations. As such, use, duplication, disclosure, modification, and adaptation of the programs, including any operating system, integrated software, any programs installed on the hardware, and/or documentation, shall be subject to license terms and license restrictions applicable to the programs. No other rights are granted to the U.S. Government.

This software or hardware is developed for general use in a variety of information management applications. It is not developed or intended for use in any inherently dangerous applications, including applications that may create a risk of personal injury. If you use this software or hardware in dangerous applications, then you shall be responsible to take all appropriate failsafe, backup, redundancy, and other measures to ensure its safe use. Oracle Corporation and its affiliates disclaim any liability for any damages caused by use of this software or hardware in dangerous applications.

This software and related documentation are provided under a license agreement containing restrictions on use and disclosure and are protected by intellectual property laws. Except as expressly permitted in your license agreement or allowed by law, you may not use, copy, reproduce, translate, broadcast, modify, license, transmit, distribute, exhibit, perform, publish or display any part, in any form, or by any means. Reverse engineering, disassembly, or decompilation of this software, unless required by law for interoperability, is prohibited.

The information contained herein is subject to change without notice and is not warranted to be error-free. If you find any errors, please report them to us in writing.

This software or hardware and documentation may provide access to or information on content, products and services from third parties. Oracle Corporation and its affiliates are not responsible for and expressly disclaim all warranties of any kind with respect to third-party content, products, and services. Oracle Corporation and its affiliates will not be responsible for any loss, costs, or damages incurred due to your access to or use of third-party content, products, or services.