

Purge Entity Definition  
Oracle Banking Trade Finance  
Release 14.8.0.0.0  
Part No. G30072-01

[April] [2025]



---

# Contents

- 1. Preface.....3
  - 1.1 Audience .....3
  - 1.2 Related Documents .....3
- 2. Introduction.....3
  - 2.1 How to use this Guide .....3
- 3. Overview of Purge Entity.....4
  - 3.1 Purge Parameters Configuration .....5
- 4. Purge Entity Definition .....5
  - 4.1 Purge Master .....7
  - 4.2 Purge Tables.....8
  - 4.3 Purge Filters .....9
    - 4.3.1 Business Filter .....9
    - 4.3.2 Execution Filter .....11
    - 4.3.3 Free Format Filter .....11
- 5. Generated Files.....12

---

# 1. Preface

This document explains the method to configure purge entities and to apply purge filters and discusses the process of purge generation in Oracle FLEXCUBE Development Workbench

## 1.1 Audience

This document is intended for FLEXCUBE Application developers/users that use Development Workbench to develop various FLEXCUBE components.

To Use this manual, you need conceptual and working knowledge of the below:

<i>Proficiency</i>	<i>Resources</i>
FLEXCUBE Functional Architecture	Training programs from Oracle Financial Software Services.
FLEXCUBE Technical Architecture	Training programs from Oracle Financial Software Services.
Working knowledge of Oracle Database	Oracle Documentations
Working knowledge of PLSQL & SQL Language	Self Acquired
Working knowledge of XML files	Self Acquired

## 1.2 Related Documents

[03-Development WorkBench Getting Started.docx](#)

# 2. Introduction

## 2.1 How to use this Guide

The information in this document includes:

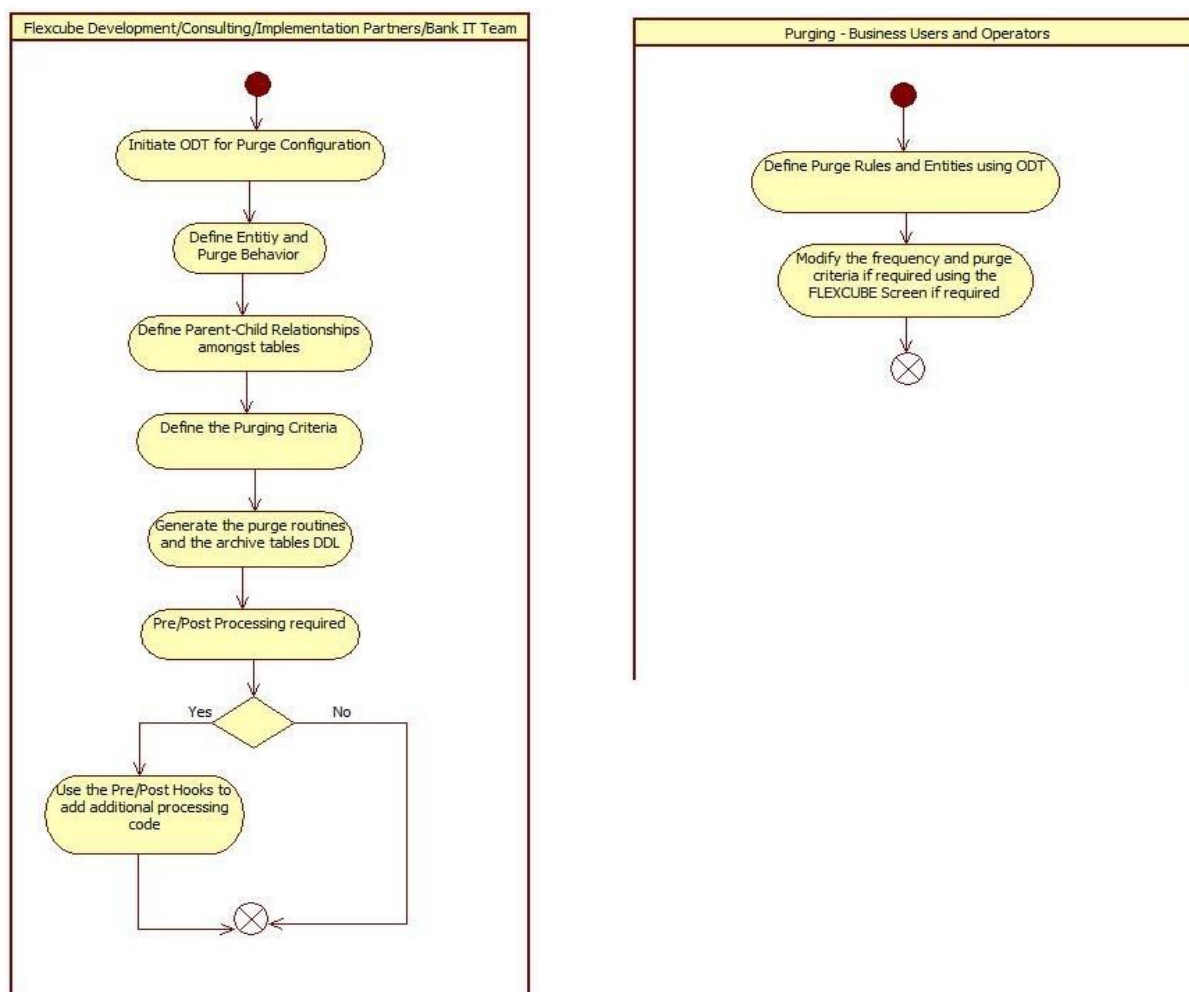
- [Chapter 2, "Introduction"](#)
- [Chapter 3, "Overview of Purge Entity"](#)
- [Chapter 4, "Purge Entity Definition"](#)
- [Chapter 5, "Generated Units"](#)
- [Chapter 5, "Extensible Development"](#)

### 3. Overview of Purge Entity

New Purge Framework is introduced in FLEXCUBE where user can configure the data to be purged.

This framework consists of two parts - – Purge Parameter Configuration and Purge Execution.

The following diagram captures the framework of Purge Parameter Configuration



Workbench will be used for defining the list of entities to be purged. Persistence of Purge Entity Configured is achieved through the RADXML saved by the Tool.

### 3.1 Purge Parameters Configuration

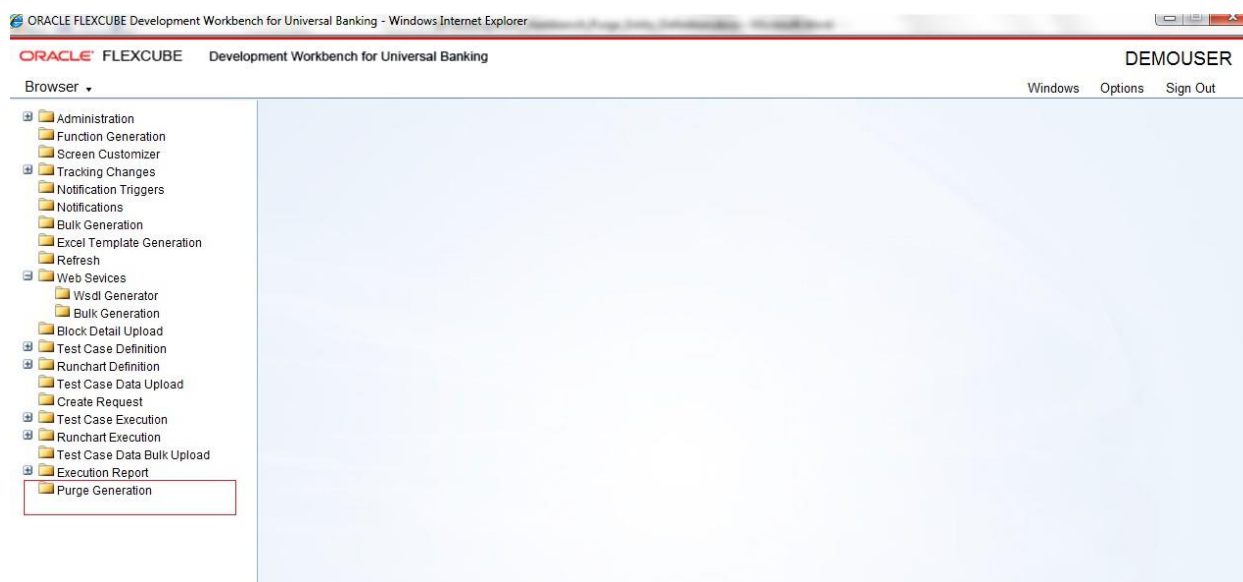
For the initial purge parameter configuration, ODT utility for generating the Purge routines is to be used. The tool will be used to generate the packages that will have the purge logic based on the criteria. The tool will be used for the following –

1. Maintaining the list of entities that need to be purged. This includes maintaining the Master-Child relationship between the tables. Each entity will have the following
  - a. Parent table
  - b. Primary key for the parent table and the data-types of the key fields
  - c. List of child tables
  - d. Relation with the parent tables and the data-types of the key fields
2. Maintaining the purge behavior – whether the data is to be deleted or archived
3. Maintaining the mode of purge – whether it is bulk or record level
4. Maintaining the archive table suffix if the purge behavior is to archive the data
5. Maintaining the filter criteria to determine what data to purge. These filter criteria will be applied on the parent table to identify the data to purge and based on the setup, corresponding data will be purged from the child tables also.

## 4. Purge Entity Definition

Login to FLEXCUBE Workbench by providing your user credentials.

Click on Purge Generation from the browser tree as shown in the figure



Specify the following details:

**Action**

Specify whether you need to create a new record or load modify an existing record.

**Save XML Path**

Specify the location of the RAD XML file.

**Entity name**

Specify the name of the entity.

**Module Name**

Specify the name of the module to which the entity belongs.

**Entity ID**

ODT defaults the entity ID. Entity ID name is derived as <Module\_Name>P<Entityname>

Example: FTPCONTRACT

On the left menu, you can find the following options:

- Purge Master
- Purge Tables
- Purge Filters

## 4.1 Purge Master

You can define the purge preferences for the entity from 'Purge Master' menu item. Click 'Purge Master' on the left menu.

Specify the following details:

### Entity Description

Specify a brief description of the entity that you are defining.

### Purge Type

Specify the purge type. The following options are available in the drop-down list:

Delete – if you select this, the data will be deleted from the main tables

Archive – if you select this, the data will be saved in the archive tables and deleted from the main tables

### Purge Mode

Specify the mode of purge. You can select one of the following options:

Entity – if you select this, purge happens based on the entity or record

Bulk – if you select this, purge happens in bulk for many records

### Purge Frequency

Specify the frequency at which the purge should happen.

You can select one of the following options:

Ad-hoc

Daily

Weekly

Monthly

Quarterly

Yearly

### Archive Table Suffix

Specify the text that should suffix the main table name during archive purge operation. If you select the purge type as 'Archive', you need to specify this.

For example, if the name of the main table is 'MAIN\_TABLE' and you have specified the archive table suffix as 'HIST', then after the purge, the name of the archive table will be 'MAIN\_TABLE\_HIST'.

## 4.2 Purge Tables

You can maintain the underlying tables for a particular entity using Purge Tables. Click ‘Purge Tables’ on the left menu.

Purge Generation

Action: Load

Save XML Path: LCPCTRCT\_RAD.xml

BROWSE

Entity Name: CTRCT

Module Name: LC

Entity Id: LCPCTRCT

Purge Master

Purge Tables

Purge Filters

Purge Table Details

Table Name	Master	Parent	Relation With Parent	Key Fields
CSTB_CONTRACT	<input checked="" type="checkbox"/>			CONTRACT_REF_NO
LCTB_AVAILMENTS	<input type="checkbox"/>	CSTB_CONTRACT	CSTB_CONTRACT.CONTRACT_REF	EVENT_SEQ_NO-CON
LCTB_CLAUSES	<input type="checkbox"/>	CSTB_CONTRACT	CSTB_CONTRACT.CONTRACT_REF	CLAUSE_CODE-DOC
LCTB_COLLATERAL	<input type="checkbox"/>	CSTB_CONTRACT	CSTB_CONTRACT.CONTRACT_REF	EVENT_SEQ_NO-CON
LCTB_COMMISSION_DETAILS	<input type="checkbox"/>	CSTB_CONTRACT	CSTB_CONTRACT.CONTRACT_REF	COMPONENT-LAST_E
LCTB_COMMISSION_MASTER	<input type="checkbox"/>	CSTB_CONTRACT	CSTB_CONTRACT.CONTRACT_REF	COMPONENT-CONTR
LCTB_CONTRACT_MASTER	<input type="checkbox"/>	CSTB_CONTRACT	CSTB_CONTRACT.CONTRACT_REF	EVENT_SEQ_NO-CON
LCTB_DOCUMENTS	<input type="checkbox"/>	CSTB_CONTRACT	CSTB_CONTRACT.CONTRACT_REF	DOC_CODE-EVENT_S
LCTB_DRAFTS	<input type="checkbox"/>	CSTB_CONTRACT	CSTB_CONTRACT.CONTRACT_REF	EVENT_SEQ_NO-CON
LCTB_FFTS	<input type="checkbox"/>	CSTB_CONTRACT	CSTB_CONTRACT.CONTRACT_REF	MESG_TYPE-EVENT_S
LCTB_GOODS	<input type="checkbox"/>	CSTB_CONTRACT	CSTB_CONTRACT.CONTRACT_REF	EVENT_SEQ_NO-CON
LCTB_MEMO_ACCRUALS	<input type="checkbox"/>	CSTB_CONTRACT	CSTB_CONTRACT.CONTRACT_REF	COMPONENT-CONTR
LCTB_OTHER_ADDRESSES	<input type="checkbox"/>	CSTB_CONTRACT	CSTB_CONTRACT.CONTRACT_REF	PARTY_TYPE-EVENT
LCTB_PARTIES	<input type="checkbox"/>	CSTB_CONTRACT	CSTB_CONTRACT.CONTRACT_REF	PARTY_TYPE-EVENT
LCTB_SHIPMENT	<input type="checkbox"/>	CSTB_CONTRACT	CSTB_CONTRACT.CONTRACT_REF	EVENT_SEQ_NO-CON
LCTB_TRACERS	<input type="checkbox"/>	CSTB_CONTRACT	CSTB_CONTRACT.CONTRACT_REF	TRACER_CODE-EVEN
CSTB_TEMPLATE	<input type="checkbox"/>	CSTB_CONTRACT	CSTB_CONTRACT.CONTRACT_REF	TEMPLATE_ID

Specify the following details:

**Table Name**

Specify the name of the table.

**Master**

Check this box to indicate that the selected table is the master table.

**Parent**

If the selected table is not the parent table, then you need to specify the master table name here.

**Relation with Parent**

Specify the relation of the selected table with the parent table.

**Key Fields**

Specify the key field name. You can populate the key fields by clicking the ‘P’ button adjoining the table name.

**Key Fields Data Type**

Specify the key field data type. You can populate the key field name and data type by clicking the ‘P’ button adjoining the table name.

**Archiving Not Required**

In purge mode ‘Archive’, you can exclude specific tables from archiving. Check this box against the tables that you need to exclude from archiving.

8

Purge Entity Definition

Confidential - Oracle Restricted

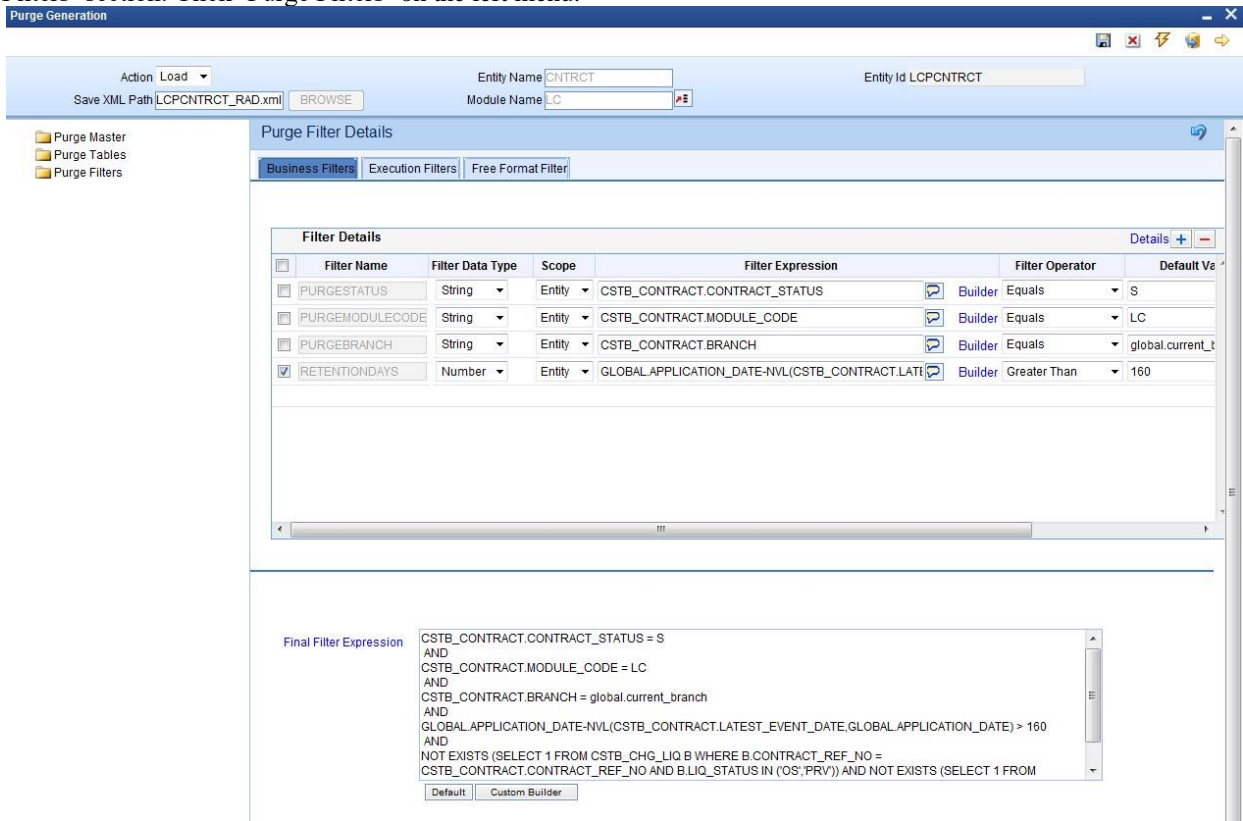


**Exclude from Purging**

You can exclude selected tables from purging. Check this box against the tables that you need to exclude from purging.

**4.3 Purge Filters**

You can define the purge filter criteria and define the predicates to be used to filter the data for purging from ‘Purge Filters’ section. Click ‘Purge Filters’ on the left menu.



Here, you can find three types of filters:

- Business Filter
- Execution Filter
- Free Format Filter

**4.3.1 Business Filter**

This filter is governed by the business needs or the regulatory environment. If you need to define a business filter, click ‘Business Filters’ tab.

**Purge Generation**

Action: Load | Save XML Path: LCPNTRCT\_RAD.xml | BROWSE | Entity Name: CNTRCT | Entity Id: LCPNTRCT | Module Name: LC

**Purge Filter Details**

Business Filters | Execution Filters | Free Format Filter

Filter Name	Filter Data Type	Scope	Filter Expression	Filter Operator	Default Value
<input type="checkbox"/> PURGESTATUS	String	Entity	CSTB_CONTRACT.CONTRACT_STATUS	Builder Equals	S
<input type="checkbox"/> PURGEMODULECODE	String	Entity	CSTB_CONTRACT.MODULE_CODE	Builder Equals	LC
<input type="checkbox"/> PURGEBRANCH	String	Entity	CSTB_CONTRACT.BRANCH	Builder Equals	global.current_t
<input checked="" type="checkbox"/> RETENTIONDAYS	Number	Entity	GLOBAL_APPLICATION_DATE-NVL(CSTB_CONTRACT.LATEST_EVENT_DATE,GLOBAL_APPLICATION_DATE)	Builder Greater Than	160

**Final Filter Expression**

```
CSTB_CONTRACT.CONTRACT_STATUS = S
AND
CSTB_CONTRACT.MODULE_CODE = LC
AND
CSTB_CONTRACT.BRANCH = global.current_branch
AND
GLOBAL_APPLICATION_DATE-NVL(CSTB_CONTRACT.LATEST_EVENT_DATE,GLOBAL_APPLICATION_DATE) > 160
AND
NOT EXISTS (SELECT 1 FROM CSTB_CHG_LIQ B WHERE B.CONTRACT_REF_NO =
CSTB_CONTRACT.CONTRACT_REF_NO AND B.LIQ_STATUS IN ('OS','PRV')) AND NOT EXISTS (SELECT 1 FROM
```

Default Custom Builder

Specify the following details:

### Filter Name

Specify a filter name. The filter name should be unique across business and execution filters for an entity.

### Filter Data Type

Specify the filter data type. You can select one of the following options:

- Date
- String
- Number

### Scope

Specify the scope, whether entity or table. If scope is table, then the filter would be applied over the filter expression table and its child tables. If it is entity, filter is applied over the entire entity; hence if the expression returns false entire entity will be skipped.

### Filter Expression

Specify the filter expression. You can use the Builder button to build a filter expression using the builder screen.

### Filter Operator

Specify the filter operator. You can select the appropriate one from the drop-down list.

### Default Value

Specify the value that satisfies the expression. If the operator expects more than one value, then each value can be separated by tilde.  
This is an optional field.

### Maximum Length

Specify the maximum length of the filter value that can be used.

**Final Filter Expression**

The Development Workbench system concatenates each filter and the operators to derive the final expression. This is a display only field.

**4.3.2 Execution Filter**

This filter is an operational filter that provides an additional predicate while doing an ad-hoc purge for an entity. During ad-hoc purge, you can use the execution filter in order to get flexibility in purging selective data for an entity.

If you need to define an execution filter, click ‘Execution Filters’ tab.

Purge Filter Details

Business Filters

Execution Filters

Free Format Filter

Filter Details

Filter Name

Filter Data Type

Scope

Filter Expression

Filter Operator

Defi

Final Filter Expression

?

AND

?

Default

Custom Builder

For details on each field, refer to the section ‘Business Filters’ in this chapter.

**4.3.3 Free Format Filter**

This contains predefined filter conditions. You cannot modify these.

Purge Entity Definition

11

Confidential - Oracle Restricted

Save XML Path: LCPCNTRCT\_RAD.xml BROWSE

Entity Name: CNTRCT Entity Id: LCPCNTRCT Module Name: LC

Purge Master  
Purge Tables  
Purge Filters

Purge Filter Details

Business Filters Execution Filters Free Format Filter

Free Format Filter

```
NOT EXISTS (SELECT 1 FROM CSTB_CHG_LIQ B WHERE B.CONTRACT_REF_NO =
CSTB_CONTRACT.CONTRACT_REF_NO AND B.LIQ_STATUS IN ('OS','PRV')) AND NOT EXISTS (SELECT 1 FROM
CSTB_CHG_LIQ B WHERE B.CONTRACT_REF_NO = CSTB_CONTRACT.CONTRACT_REF_NO AND NVL
(B.LIQ_AUTH_STATUS, 'U') = 'U')
```

Final Filter Expression

```
CSTB_CONTRACT.CONTRACT_STATUS = S
AND
CSTB_CONTRACT.MODULE_CODE = LC
AND
CSTB_CONTRACT.BRANCH = global.current_branch
AND
GLOBAL_APPLICATION_DATE+NVL(CSTB_CONTRACT.LATEST_EVENT_DATE,GLOBAL_APPLICATION_DATE) > 160
AND
NOT EXISTS (SELECT 1 FROM CSTB_CHG_LIQ B WHERE B.CONTRACT_REF_NO =
CSTB_CONTRACT.CONTRACT_REF_NO AND B.LIQ_STATUS IN ('OS','PRV')) AND NOT EXISTS (SELECT 1 FROM
```

Default Custom Builder

#### A Sample Filter and its constituent fields in Filter Definition

GLOBAL.APPLICATION\_DATE- CSTB\_CONTRACT.BOOK\_DATE > 120

- Filter Name: RETENTION
- RHS Expression:  
GLOBAL.APPLICATION\_DATE- CSTB\_CONTRACT.BOOK\_DATE
- Operator: Greater Than
- Default Value: 120
- Filter Data Type: NUMBER
- Maximum Length: 5

Final Filter Expression is derived by concatenating each filters by AND operator.

## 5. Generated Files

### 1) Main Package

This package will have the capability of either purging/archiving the data based on the criteria that has been configured.

Record keys of the data to be purged will be inserted into a staging table. Multiple threads will be accessing the staging table to purge the data from table. Once purged, data from staging table would be removed.

### 2) Hook Packages

- Post Hook after deriving filter values
- Pre and Post hooks at the purge program level
- Pre and Post hooks at the record level

### 3) Static Scripts

Scripts for the following tables will be generated.

- STTM\_PURGE\_MASTER
- STTM\_PURGE\_TBL\_DETAILS
- STTM\_PURGE\_FILTER\_DETAILS

### 4) Archival table Definitions

DDL for all archival tables would be generated

ORACLE FLEXCUBE Development Workbench for Universal Banking

DEMOUSER

Purge Generation

Generate

Front-End Files	System Packages	Hook Packages	Meta Data	Others
<input type="checkbox"/> RadXML	<input checked="" type="checkbox"/> Main Package Spec	<input checked="" type="checkbox"/> Kernel Package Spec	<input type="checkbox"/> Menu Details	<input type="checkbox"/> Label Details
<input type="checkbox"/> Screen Xml	<input checked="" type="checkbox"/> Main Package Body	<input checked="" type="checkbox"/> Kernel Package Body	<input type="checkbox"/> Datasource Details	<input type="checkbox"/> Block PK Columns
<input type="checkbox"/> System JS	<input type="checkbox"/> Notification Triggers	<input type="checkbox"/> Cluster Package Spec	<input type="checkbox"/> LOV Details	<input type="checkbox"/> Function Call Forms
	<input type="checkbox"/> Upload Package Spec	<input type="checkbox"/> Cluster Package Body	<input type="checkbox"/> Block Details	<input type="checkbox"/> Gateway Details
	<input type="checkbox"/> Upload Package Body	<input type="checkbox"/> Custom Package Spec	<input type="checkbox"/> Screen Details	<input type="checkbox"/> Notification Details
		<input type="checkbox"/> Custom Package Body	<input type="checkbox"/> Amendable Details	<input type="checkbox"/> Function Parameters
			<input type="checkbox"/> Call form Details	<input checked="" type="checkbox"/> Purge Details
			<input type="checkbox"/> Summary Details	<input type="checkbox"/> Xsds
				<input type="checkbox"/> Xsd With Annotations
				<input type="checkbox"/> Screen Html
				<input type="checkbox"/> Upload Table Trigger
				<input type="checkbox"/> Upload Tables Definition
				<input checked="" type="checkbox"/> Archive Table Definition

SLNo	File Name	File Type	Status
1	bcps_bcpcontract_main.spc	SPC	Generated
2	bcps_bcpcontract_kernel.spc	SPC	Generated
3	bcps_bcpcontract_main.sql	SQL	Generated
4	bcps_bcpcontract_kernel.sql	SQL	Generated
5	ARCHIVE_TABLES__BCPCONTRACT.DDL	DDL	Generated
6	STTM_PURGE_MASTER__BCPCONTRACT.INC	INC	Generated
7	STTM_PURGE_TBL_DETAILS__BCPCONTRACT.INC	INC	Generated
8	STTM_PURGE_FILTER_DETAILS__BCPCONTRACT.INC	INC	Generated
9	BCPCONTRACT_RAD.xml	RADXML	Generated

Generate Exit



**Purge Entity Definition**

[April] [2025]  
Version 14.8.0.0.0

Oracle Financial Services Software Limited  
Oracle Park  
Off Western Express Highway  
Goregaon (East)  
Mumbai, Maharashtra 400 063  
India

Worldwide Inquiries:  
Phone: +91 22 6718 3000  
Fax: +91 22 6718 3001  
[www.oracle.com/financialservices/](http://www.oracle.com/financialservices/)

Copyright © 2025, Oracle and/or its affiliates. All rights reserved.

Oracle and Java are registered trademarks of Oracle and/or its affiliates. Other names may be trademarks of their respective owners.

**U.S. GOVERNMENT END USERS:** Oracle programs, including any operating system, integrated software, any programs installed on the hardware, and/or documentation, delivered to U.S. Government end users are "commercial computer software" pursuant to the applicable Federal Acquisition Regulation and agency-specific supplemental regulations. As such, use, duplication, disclosure, modification, and adaptation of the programs, including any operating system, integrated software, any programs installed on the hardware, and/or documentation, shall be subject to license terms and license restrictions applicable to the programs. No other rights are granted to the U.S. Government.

This software or hardware is developed for general use in a variety of information management applications. It is not developed or intended for use in any inherently dangerous applications, including applications that may create a risk of personal injury. If you use this software or hardware in dangerous applications, then you shall be responsible to take all appropriate failsafe, backup, redundancy, and other measures to ensure its safe use. Oracle Corporation and its affiliates disclaim any liability for any damages caused by use of this software or hardware in dangerous applications.

This software and related documentation are provided under a license agreement containing restrictions on use and disclosure and are protected by intellectual property laws. Except as expressly permitted in your license agreement or allowed by law, you may not use, copy, reproduce, translate, broadcast, modify, license, transmit, distribute, exhibit, perform, publish or display any part, in any form, or by any means. Reverse engineering, disassembly, or decompilation of this software, unless required by law for interoperability, is prohibited.

The information contained herein is subject to change without notice and is not warranted to be error-free. If you find any errors, please report them to us in writing.

This software or hardware and documentation may provide access to or information on content, products and services from third parties. Oracle Corporation and its affiliates are not responsible for and expressly disclaim all warranties of any kind with respect to third-party content, products, and services. Oracle Corporation and its affiliates will not be responsible for any loss, costs, or damages incurred due to your access to or use of third-party content, products, or services.