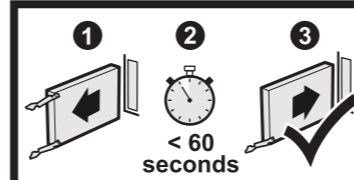




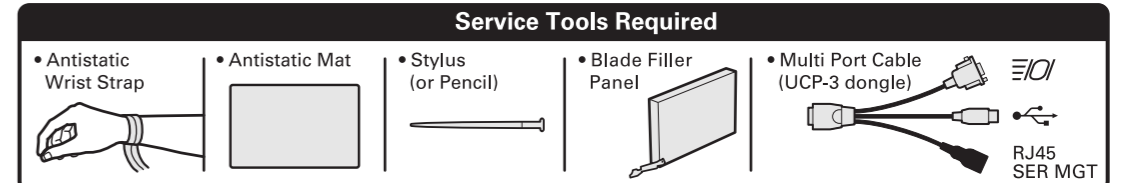
Set Up Your Server Firmware and Software with Oracle System Assistant

1. Attach a keyboard, monitor, and mouse to the server module or use the ILOM Remote Console.
2. Power on the server module with the power button or through the ILOM interface.
- 3a. If Oracle System Assistant is installed (most cases), you will be prompted to start it by pressing F9.
- 3b. If Oracle System Assistant is not installed, see the Installation Guide for setting up firmware and software.

For more information see the Installation Guide.



IMPORTANT
Blades might overheat.
 Insert blade filler panel into empty slot within 60 seconds of blade removal.



1 HDD Removal - Hot Service

HDD Status Indicators

- Operational (Steady On)
- Activity (Random Blink)
- Fault - Service Required (Steady On)
- Locate (Fast Blink)
- Ready to Remove* (Service Allowed (Steady On))

Use Correct HDD

1. Identify HDD that has been readied for removal.
2. Press button.
3. Pull lever to remove.

2 HDD Filler Removal - Hot Service

IMPORTANT
 All bays must be populated by either a HDD or HDD filler.

1. Flip open lever and rotate down.
2. Pull out HDD filler.

3 Blade (BL) Removal

IMPORTANT
 Insert blade filler panel into empty slot until service task is completed.

1. Identify blade that has been readied for removal.
2. Squeeze both latches.
3. 1. Open ejector arms. 2. Pull blade out 1/2 way.
4. 1. Close ejector arms. 2. Remove blade with 2 hands.
5. Place blade on antistatic mat.

4 RAID Expansion Module (REM) Replacement

1. Remove top cover and locate REM.
2. Lift REM ejector arm.
3. 1. Pinch board edges and tilt up. 2. Pull out and away from tabs.
4. For replacement: 1. Close ejector arm. 2. Carefully align tabs and pin. 3. Press REM down firmly to seat connector.

5 Fabric Expansion Module (FEM) Replacement

IMPORTANT

- FEMs are available in single and double widths.
- Install one FEM per blade.
- Always install single wide cards in FEM 0.

Single Wide	Double Wide
FEM 1	FEM 0
FEM 0	FEM 0

1. Remove top cover and locate FEM.
2. 1. Use board edge and tilt up. 2. Pull out and away from tabs.
3. For replacement: 1. Align tabs and pin. 2. Align to guide. 3. Press FEM down firmly to seat connector.

Top Cover Removal

To open, press button and push top cover to rear.

6 Internal USB Flash Drive Removal

1. Remove top cover. Locate internal USB ports; access is at the rear of the blade.
2. Pull USB flash drive out.

IMPORTANT

- Handle blade with care. Flash drives might extend past rear of blade.
- If present, always install Oracle System Assistant USB Flash Drive in Port 0.

7 Battery Removal

1. Push top of battery.
2. Lift from holder.

Battery: CR2032

8 DDR-3 Memory Replacement

IMPORTANT
 Always install a replacement DIMM with the same part number and capacity as the failed DIMM.

1. If replacing a DIMM, press and hold Remind Button to illuminate DIMM Fault LED.
2. 1. Press tabs down to unlock DIMM. 2. Lift out faulted DIMM.
3. 1. Press replacement DIMM fully into socket. 2. Ensure tabs are locked.

Status Indicators & Buttons

- Locate LED/Button (Fast Blink)
- Ready to Remove (Service Allowed (Steady On))
- Fault (Service Required (Steady On))
- Operational (Steady On)
- Standby (Blink)
- Transition (Blink)
- On/Standby Button
- Reset Button (For Service Use Only)
- NMI

On/Standby Button Use

POWER ON BLADE: Press and release.

SET BLADE TO STANDBY: Graceful: Press and release. Emergency: Press and hold >5 seconds.

Observe precautions for handling electrostatic sensitive devices.

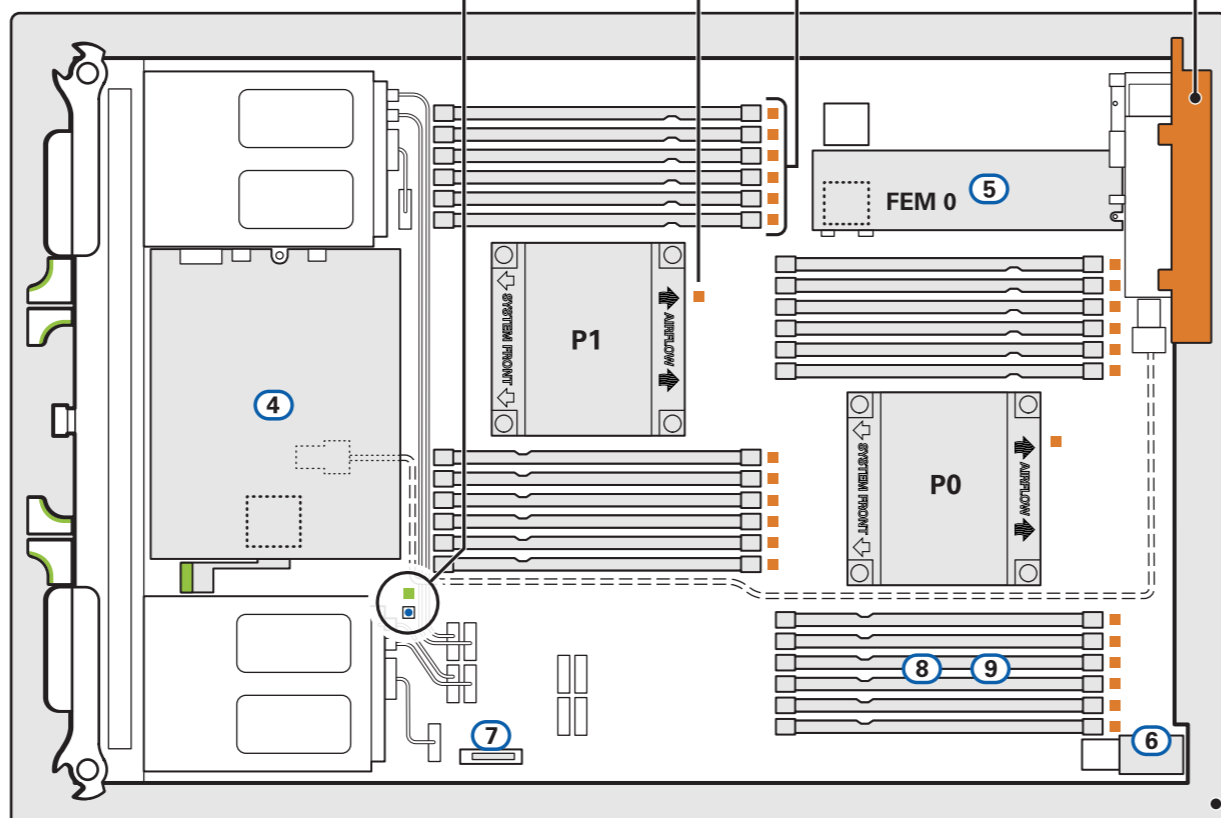
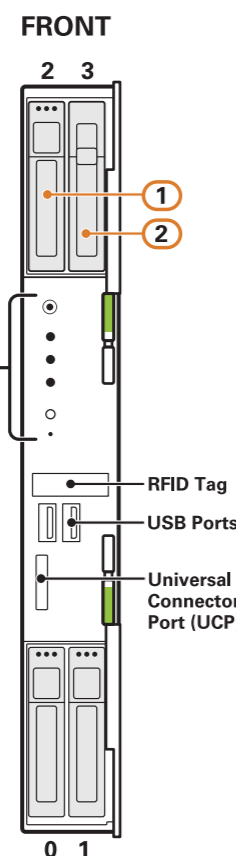
Remind Button & Indicator

- Fault Remind Power LED: Indicates Fault LED power available.
- Fault Remind Button: Press to light Fault LEDs for DIMMs or Processors.

Processor Fault LEDs
 Service action required.

DIMM Fault LEDs
 Service action required.

IMPORTANT
 Remove connector cover before use.



9 DDR-3 Memory Configuration/Upgrade

- For optimal performance install DIMMs in groups of 4 as shown in table.
- For memory configuration details, see Service Manual.

Sockets	Slot Location
1st:	D0, D3, D6, D9
2nd:	D1, D4, D7, D10
3rd:	D2, D5, D8, D11

IMPORTANT
 For processor, disk backplane, and motherboard failures, see Service Manual.

