

Sun Server X4-2L

Installation Guide for Oracle VM



Part No.: E38153-02
September 2013

Copyright © 2013, Oracle and/or its affiliates. All rights reserved.

This software and related documentation are provided under a license agreement containing restrictions on use and disclosure and are protected by intellectual property laws. Except as expressly permitted in your license agreement or allowed by law, you may not use, copy, reproduce, translate, broadcast, modify, license, transmit, distribute, exhibit, perform, publish, or display any part, in any form, or by any means. Reverse engineering, disassembly, or decompilation of this software, unless required by law for interoperability, is prohibited.

The information contained herein is subject to change without notice and is not warranted to be error-free. If you find any errors, please report them to us in writing.

If this is software or related software documentation that is delivered to the U.S. Government or anyone licensing it on behalf of the U.S. Government, the following notice is applicable:

U.S. GOVERNMENT END USERS. Oracle programs, including any operating system, integrated software, any programs installed on the hardware, and/or documentation, delivered to U.S. Government end users are "commercial computer software" pursuant to the applicable Federal Acquisition Regulation and agency-specific supplemental regulations. As such, use, duplication, disclosure, modification, and adaptation of the programs, including any operating system, integrated software, any programs installed on the hardware, and/or documentation, shall be subject to license terms and license restrictions applicable to the programs. No other rights are granted to the U.S. Government.

This software or hardware is developed for general use in a variety of information management applications. It is not developed or intended for use in any inherently dangerous applications, including applications that may create a risk of personal injury. If you use this software or hardware in dangerous applications, then you shall be responsible to take all appropriate fail-safe, backup, redundancy, and other measures to ensure its safe use. Oracle Corporation and its affiliates disclaim any liability for any damages caused by use of this software or hardware in dangerous applications.

Oracle and Java are registered trademarks of Oracle and/or its affiliates. Other names may be trademarks of their respective owners.

Intel and Intel Xeon are trademarks or registered trademarks of Intel Corporation. All SPARC trademarks are used under license and are trademarks or registered trademarks of SPARC International, Inc. AMD, Opteron, the AMD logo, and the AMD Opteron logo are trademarks or registered trademarks of Advanced Micro Devices. UNIX is a registered trademark of The Open Group.

This software or hardware and documentation may provide access to or information on content, products, and services from third parties. Oracle Corporation and its affiliates are not responsible for and expressly disclaim all warranties of any kind with respect to third-party content, products, and services. Oracle Corporation and its affiliates will not be responsible for any loss, costs, or damages incurred due to your access to or use of third-party content, products, or services.

Copyright © 2013, Oracle et/ou ses affiliés. Tous droits réservés.

Ce logiciel et la documentation qui l'accompagne sont protégés par les lois sur la propriété intellectuelle. Ils sont concédés sous licence et soumis à des restrictions d'utilisation et de divulgation. Sauf disposition de votre contrat de licence ou de la loi, vous ne pouvez pas copier, reproduire, traduire, diffuser, modifier, breveter, transmettre, distribuer, exposer, exécuter, publier ou afficher le logiciel, même partiellement, sous quelque forme et par quelque procédé que ce soit. Par ailleurs, il est interdit de procéder à toute ingénierie inverse du logiciel, de le désassembler ou de le décompiler, excepté à des fins d'interopérabilité avec des logiciels tiers ou tel que prescrit par la loi.

Les informations fournies dans ce document sont susceptibles de modification sans préavis. Par ailleurs, Oracle Corporation ne garantit pas qu'elles soient exemptes d'erreurs et vous invite, le cas échéant, à lui en faire part par écrit.

Si ce logiciel, ou la documentation qui l'accompagne, est concédé sous licence au Gouvernement des Etats-Unis, ou à toute entité qui délivre la licence de ce logiciel ou l'utilise pour le compte du Gouvernement des Etats-Unis, la notice suivante s'applique :

U.S. GOVERNMENT END USERS. Oracle programs, including any operating system, integrated software, any programs installed on the hardware, and/or documentation, delivered to U.S. Government end users are "commercial computer software" pursuant to the applicable Federal Acquisition Regulation and agency-specific supplemental regulations. As such, use, duplication, disclosure, modification, and adaptation of the programs, including any operating system, integrated software, any programs installed on the hardware, and/or documentation, shall be subject to license terms and license restrictions applicable to the programs. No other rights are granted to the U.S. Government.

Ce logiciel ou matériel a été développé pour un usage général dans le cadre d'applications de gestion des informations. Ce logiciel ou matériel n'est pas conçu ni n'est destiné à être utilisé dans des applications à risque, notamment dans des applications pouvant causer des dommages corporels. Si vous utilisez ce logiciel ou matériel dans le cadre d'applications dangereuses, il est de votre responsabilité de prendre toutes les mesures de secours, de sauvegarde, de redondance et autres mesures nécessaires à son utilisation dans des conditions optimales de sécurité. Oracle Corporation et ses affiliés déclinent toute responsabilité quant aux dommages causés par l'utilisation de ce logiciel ou matériel pour ce type d'applications.

Oracle et Java sont des marques déposées d'Oracle Corporation et/ou de ses affiliés. Tout autre nom mentionné peut correspondre à des marques appartenant à d'autres propriétaires qu'Oracle.

Intel et Intel Xeon sont des marques ou des marques déposées d'Intel Corporation. Toutes les marques SPARC sont utilisées sous licence et sont des marques ou des marques déposées de SPARC International, Inc. AMD, Opteron, le logo AMD et le logo AMD Opteron sont des marques ou des marques déposées d'Advanced Micro Devices. UNIX est une marque déposée d'The Open Group.

Ce logiciel ou matériel et la documentation qui l'accompagne peuvent fournir des informations ou des liens donnant accès à des contenus, des produits et des services émanant de tiers. Oracle Corporation et ses affiliés déclinent toute responsabilité ou garantie expresse quant aux contenus, produits ou services émanant de tiers. En aucun cas, Oracle Corporation et ses affiliés ne sauraient être tenus pour responsables des pertes subies, des coûts occasionnés ou des dommages causés par l'accès à des contenus, produits ou services tiers, ou à leur utilisation.



Adobe PostScript

Contents

Using This Documentation v

About Oracle VM Installs 1

Oracle VM Installation Task Map 1

Supported Oracle VM Software 3

Selecting the Console Display Option 4

 Console Display Options 4

 ▼ Set Up the Local Console 4

 ▼ Set Up the Remote Console 5

Selecting the Boot Media Option 6

 Boot Media Options Requirements 6

 Local Boot Media Requirements 6

 Remote Boot Media Requirements 6

 ▼ Set Up the Local Boot Media Option 7

 ▼ Set Up the Remote Boot Media Option 7

Selecting the Installation Target Option 8

 Installation Target Options 8

 Important: Internal, Embedded Oracle System Assistant USB Flash
 Drive Should Not Be Used as a Boot or Storage Drive 8

 ▼ Set Up a Local Storage Drive (HDD or SSD) as the Installation Target
 9

 ▼ Set Up a Fibre Channel Storage Area Network Device as the
 Installation Target 9

Oracle VM Installation Options	9
Single-Server Installation Methods	10
Assisted Oracle VM Installation	11
Manual Oracle VM Installation	11
Oracle System Assistant Overview	11
Oracle System Assistant Tasks	12
Get Updates and Install OS Tasks	13
Obtaining Oracle System Assistant	13

Preparing to Install Oracle VM 15

▼ Verify the BIOS Factory Defaults	15
▼ Disable VT-d and SR-IOV in BIOS	18
Configuring RAID	21

Installing Oracle VM 23

Before You Begin	23
Installing Oracle VM on a Single System Using Oracle System Assistant	24
▼ Install Oracle VM Using Oracle System Assistant	25
Installing Oracle VM on a Single System Using Media	28
Installing Oracle VM Using Local or Remote Media	28
▼ Install Oracle VM Server Using Local or Remote Media	29
Post Installation Tasks for Oracle VM	32
Update Oracle VM Software	33
Manage Oracle VM Resources	33

Configuring Network Interfaces 35

NIC Connectors	35
----------------	----

Index 37

Using This Documentation

This installation guide contains procedures for installing the Oracle VM Server software, and initial software configuration procedures for bringing the Sun Server X4-2L from Oracle to a configurable and usable state.

This document is written for technicians, system administrators, authorized service providers, and users who have experience with installing operating systems.

This section describes how to get the latest software and firmware, documentation and feedback, and support and accessibility information.

- “Getting the Latest Software and Firmware” on page v
- “About This Documentation” on page vi
- “Related Documentation” on page vi
- “Feedback” on page vi
- “Support and Accessibility” on page vii

Getting the Latest Software and Firmware

Firmware, drivers and other hardware-related software for each Oracle x86 server, server module (blade), and blade chassis are updated periodically.

You can obtain the latest version in one of three ways:

- Oracle System Assistant – This is a new factory-installed option for Oracle x86 servers. It has all the tools and drivers you need and is built into the server.
- My Oracle Support: <http://support.oracle.com>
- Physical media request

For more information, see *Sun Server X4-2L Installation Guide*, “Getting Server Firmware and Software Updates” on page 31.

About This Documentation

This documentation set is available in both PDF and HTML formats. The information is presented in topic-based organization (similar to online help) and therefore does not include chapters, appendices, or section numbering.

A PDF version that includes all information on a particular subject (such as hardware installation or product notes) can be generated by clicking the PDF button in the upper left corner of the HTML page.

Related Documentation

Documentation	Link
All Oracle documentation	http://www.oracle.com/documentation
Sun Server X4-2L	http://www.oracle.com/goto/X4-2L/docs
<i>Oracle X4 Series Servers Administration Guide</i>	http://www.oracle.com/goto/x86AdminDiag/docs
Oracle Integrated Lights Out Manager (ILOM) 3.1	http://www.oracle.com/goto/ILOM/docs
Oracle Hardware Management Pack 2.2	http://www.oracle.com/goto/OHMP/docs

Feedback

You can provide feedback on this documentation at:

<http://www.oracle.com/goto/docfeedback>

Support and Accessibility

Description	Links
Access electronic support through My Oracle Support	http://support.oracle.com
	For hearing impaired: http://www.oracle.com/accessibility/support.html
Learn about Oracle's commitment to accessibility	http://www.oracle.com/us/corporate/accessibility/index.html

About Oracle VM Installs

This section contains an overview for installing Oracle VM on your server.

Description	Links
Learn about Oracle VM software installation steps.	“Oracle VM Installation Task Map” on page 1
Learn which Oracle VM software versions are supported.	“Supported Oracle VM Software” on page 3
Learn about console display options and how to set them up.	“Selecting the Console Display Option” on page 4
Learn about boot media options and how to set them up.	“Selecting the Boot Media Option” on page 6
Learn about installation target options and how to set them up.	“Selecting the Installation Target Option” on page 8
Learn about Oracle VM install options.	“Oracle VM Installation Options” on page 9
Learn about Oracle System Assistant.	“Oracle System Assistant Overview” on page 11

Related Information

- [“Installing Oracle VM” on page 23](#)

Oracle VM Installation Task Map

The following table describes the steps for installing the Oracle VM software.

Step	Description	Links
1.	Install your server hardware and configure the Oracle ILOM service processor.	<ul style="list-style-type: none"> • <i>Sun Server X4-2L Installation Guide</i>, “Installing the Server Into a Rack” on page 41 • <i>Sun Server X4-2L Installation Guide</i>, “Cabling the Server” on page 79 • <i>Sun Server X4-2L Installation Guide</i>, “Connecting to Oracle ILOM” on page 87
2.	Set up a second system with a static IP address on which you can install the Oracle VM Manager. This system must have one of the following operating systems installed: <ul style="list-style-type: none"> • Oracle Linux 5.5, 64-bit or subsequent releases • Red Hat Enterprise Linux Release 6, 64-bit or subsequent releases 	<i>Oracle VM Release Notes for Release 3.2.1</i> , <i>Oracle VM Installation and Upgrade Guide for Release 3.2.1</i> , and <i>Oracle VM User’s Guide for Release 3.2.1</i> at: http://docs.oracle.com/cd/E35328_01/index.html
3.	Obtain the Oracle VM installation media and the Oracle VM documentation. The Oracle VM documentation should be used in conjunction with the install procedures referenced below in Step 7.	<ul style="list-style-type: none"> • An ISO image of the Oracle VM installation program is available as a download at: http://edelivery.oracle.com/oraclevm If you want to install the Oracle VM ISO image from a CD, burn the Oracle VM ISO file to a bootable CD. <ul style="list-style-type: none"> • The Oracle VM documentation is available for download at: http://docs.oracle.com/cd/E35328_01/index.html
4.	Review the product notes.	<i>Sun Server X4-2L Product Notes</i> at: http://www.oracle.com/goto/X4-2L/docs
5.	Set up the console, the media, and the installation target that you will use to perform the installation.	<ul style="list-style-type: none"> • “Selecting the Console Display Option” on page 4 • “Selecting the Boot Media Option” on page 6 • “Selecting the Installation Target Option” on page 8

Step	Description	Links
6.	Verify BIOS settings for new OS installations.	“Verify the BIOS Factory Defaults” on page 15
7.	Install the Oracle VM Server and, if necessary, Oracle VM Manager.	For procedures for installing both the Oracle VM Server and the Oracle VM Manager, see “Installing Oracle VM on a Single System Using Media” on page 28
8.	Perform the post installation tasks, if applicable.	“Post Installation Tasks for Oracle VM” on page 32

Related Information

- [“Preparing to Install Oracle VM” on page 15](#)

Supported Oracle VM Software

The server supports the following Oracle VM software.

VM Software	Edition
Oracle VM	Release 3.2

If you requested that the Oracle VM software be preinstalled on the server when you placed your order, Oracle VM 3.2 was preinstalled at the factory. If the Oracle VM software is preinstalled on your server, but you do not want to use it, you can install any other supported operating system or virtual machine software on your server. For an updated list of operating systems supported by the server, see the latest version of the *Sun Server X4-2L Product Notes* at <http://www.oracle.com/goto/X4-2L/docs>. You can also view a list of supported operating systems at <http://wikis.oracle.com/display/SystemsComm/Sun+Server+X4-2L+-+Operating+Systems>.

Note – If Oracle VM was preinstalled, it was installed with the server set to Legacy BIOS Boot Mode. If you choose to boot the server in UEFI BIOS Boot Mode, the preinstalled image is not accessible and cannot be used. Oracle VM software does not support UEFI BIOS.

Related Information

- [“Installing Oracle VM” on page 23](#)

Selecting the Console Display Option

This section describes the options for connecting a console to perform the installation.

- [“Console Display Options” on page 4](#)
- [“Set Up the Local Console” on page 4](#)
- [“Set Up the Remote Console” on page 5](#)

Console Display Options

You can install the OS and administer the server by attaching a local console directly to the server’s service processor (SP). The server supports two types of local consoles:

- A terminal connected to the serial management port (SER MGT)
You can connect the terminal directly to the port or connect it to a terminal emulator that is connected directly to the port.
- A VGA monitor, USB keyboard, and USB mouse connected directly to the video port (VGA) and the two rear USB connectors

You can also install the OS and administer the server from a remote console by establishing a network connection to the server SP. There are two types of remote consoles:

- Web-based client connection using the Oracle ILOM Remote Console application
- Secure Shell (SSH) client connection to the network management port (NET MGT)

▼ Set Up the Local Console

1. To connect a local console, do one of the following:

- Connect a terminal to the serial management port (SER MGT) either directly or through a terminal emulator.
- Connect a VGA monitor, keyboard, and mouse to the video port (VGA) and the USB ports.

2. For serial management port (SER MGT) connections only, to establish a connection to the host serial port:

a. Type your Oracle ILOM user name and password.

b. At the Oracle ILOM login prompt, type:

```
-> start /HOST/console
```

The serial management port output is automatically routed to the Linux host serial local console.

Related Information

- Oracle Integrated Lights Out Manager (ILOM) 3.1 Documentation Library at: <http://www.oracle.com/goto/ILOM/docs>

▼ Set Up the Remote Console

1. View or establish an IP address for the server SP.

To log in to Oracle ILOM remotely using either the command-line interface or the web interface, you must know the IP address of the server's service processor (SP). For instructions, see the *Sun Server X4-2L Installation Guide*, "Determining the IP Address of the Server SP" on page 91.

2. If you are using a web-based client connection, perform these steps; otherwise go to the next step.

a. In a web browser, type the IP address for the server SP.

b. Log in to the Oracle ILOM web interface.

c. Redirect the video output from the server to the web client by launching the Oracle ILOM Remote Console.

d. If necessary, enable device redirection (mouse, keyboard, etc.) in the Devices menu.

3. If you are using an SSH client connection, perform these steps.

a. From a serial console, establish an SSH connection to the server SP (`ssh root@hostname`, where *hostname* can be the DNS name or the IP address for the server SP).

b. Log in to Oracle ILOM.

c. Redirect the serial output from the server to the SSH client by typing:

```
-> start /HOST/console
```

Related Information

- Oracle Integrated Lights Out Manager (ILOM) 3.1 Documentation Library at: <http://www.oracle.com/goto/ILOM/docs>

Selecting the Boot Media Option

You can start the operating system installation to a server by booting a local or remote installation media source. This section identifies the supported media sources and the setup requirements for each source.

- “Boot Media Options Requirements” on page 6
- “Set Up the Local Boot Media Option” on page 7
- “Set Up the Remote Boot Media Option” on page 7

Boot Media Options Requirements

This section describes the requirements for using local and remote media.

- “Local Boot Media Requirements” on page 6
- “Remote Boot Media Requirements” on page 6

Local Boot Media Requirements

Local boot media requires a built-in storage device on the server, or an external storage device attached to the server.

The only supported OS local boot media sources is CD/DVD-ROM installation media.

Remote Boot Media Requirements

Remote media requires you to boot the install over the network. You can start the network install from a redirected boot storage device or another networked system that exports the installation over the network using a Pre-Boot eXecution Environment (PXE).

Supported OS remote boot media sources can include:

- CD/DVD-ROM installation media

- CD/DVD-ROM ISO installation image
- Automated installation image (requires PXE boot)

▼ Set Up the Local Boot Media Option

To set up the local boot media, you must insert a storage device that contains the Oracle VM software installation media into the server using one of the following options:

1. **If the server is equipped with an optional DVD drive, insert the Oracle VM software installation DVD into the DVD drive located on the front of the server; otherwise, proceed to the next step.**
2. **If your server does not contain a built-in storage device, attach an appropriate storage device the contains the Oracle VM software to the front or rear panel of the server.**

Note – For information about the location of the server’s external USB ports, see the [Sun Server X4-2L Installation Guide, “About Server Features and Components”](#) on page 19.

▼ Set Up the Remote Boot Media Option

To redirect the boot media from a remote storage device, perform the following steps:

1. **Insert the boot media into the storage device, for example:**
 - **For CD/DVD-ROM**, insert media into the built-in or external CD/DVD-ROM drive on a remote workstation.
 - **For CD/DVD-ROM ISO image**, ensure that ISO image(s) are readily available on a network shared location.
 - **For device driver floppy IMG image**, ensure that IMG image, if applicable, is readily available on a network shared location or on a USB drive.
2. **Establish a web-based client connection to the server Oracle ILOM SP and launch the Oracle ILOM Remote Console application.**

For more details, see the Setup Requirements for web-based client connection in [“Selecting the Console Display Option”](#) on page 4.
3. **In the Devices menu of the Oracle ILOM Remote Console application, specify the location of the boot media, for example:**
 - **For CD/DVD-ROM boot media**, select CD-ROM.

- For CD/DVD-ROM ISO image boot media, select CD-ROM Image.
- For floppy device driver boot media, if applicable, select Floppy.
- For floppy image device driver boot media, if applicable, select Floppy Image.

Selecting the Installation Target Option

This section describes how to set up the installation target.

- [“Installation Target Options” on page 8](#)
- [“Set Up a Local Storage Drive \(HDD or SSD\) as the Installation Target” on page 9](#)
- [“Set Up a Fibre Channel Storage Area Network Device as the Installation Target” on page 9](#)

Installation Target Options

With the exception of the embedded Oracle System Assistant flash drive (which is reserved for Oracle System Assistant), you can install the operating system on any of the storage drives installed in the server. These include hard disk drives (HDDs) and solid state drives (SSDs).

For servers equipped with Fibre Channel PCIe host bus adapters (HBAs), you can choose to install the operating system to an external FC storage device.

Note – SSDs are supported only on Oracle Engineered Systems.

Important: Internal, Embedded Oracle System Assistant USB Flash Drive Should Not Be Used as a Boot or Storage Drive

The server ships with an embedded Oracle System Assistant USB flash drive. This drive contains the Oracle System Assistant, device drivers, and firmware for Oracle ILOM, BIOS, and supported IO devices. During the installation of all supported operating systems, this USB flash drive is detected as a SCSI disk with a single partition that is read/write capable and is displayed as `Oracle_SSM` in the list of drives. You should be careful not to overwrite this device when performing any of the following operations:

- Operating system installations
- Disk or partition formatting operations
- General disk, partition or filesystem maintenance

In the event that this USB flash drive is overwritten, the original contents can be restored. To restore the contents of the USB flash drive, obtain the Oracle System Assistant recovery and ISO update image and use it to perform a restore operation.

For instructions for downloading the Oracle System Assistant recovery and ISO update image and restoring the server's Oracle System Assistant flash drive, see the *Oracle X4 Series Servers Administration Guide* at:

<http://www.oracle.com/goto/x86AdminDiag/docs>

▼ Set Up a Local Storage Drive (HDD or SSD) as the Installation Target

- **Ensure that the HDD or SSD is properly installed and powered on.**

For information about installing and powering on a HDD or SSD, see the *Sun Server X4-2L Service Manual, "Servicing Storage Drives and Rear Drives (CRU)"* on page 47.

▼ Set Up a Fibre Channel Storage Area Network Device as the Installation Target

1. **Ensure that the PCIe host bus adapter (HBA) is properly installed in the server.**

For information about installing a PCIe HBA option, see the *Sun Server X4-2L Service Manual, "Servicing PCIe Cards (CRU)"* on page 79.

2. **Ensure that the storage area network (SAN) is installed and configured to make the storage device visible to the server's host.**

For instructions, refer to the documentation supplied with the Fibre Channel HBA.

Oracle VM Installation Options

You can choose to install Oracle VM on a single server or on multiple servers. The scope of this document is for single server Oracle VM installations. The table below provides some information about these two installation options.

Option	Description
Multiple servers	You can use Oracle Enterprise Manager Ops Center to install an operating system on multiple servers. For information, go to http://www.oracle.com/technetwork/ops-center/index.html
Single server	<p>Installs an Oracle VM to a single server using one of the following methods:</p> <ul style="list-style-type: none"> • Locally: Oracle VM installation is performed locally at the server. This option is recommended if you have just completed the physical installation of the server in the rack. • Remotely: Oracle VM installation is performed from a remote location. This option uses the Oracle ILOM Remote Console application to access the Oracle System Assistant or to perform a manual Oracle VM installation. <p>Note - You should use Oracle System Assistant for single server Oracle VM installations.</p>

Single-Server Installation Methods

Select a method for providing the Oracle VM Server installation media. Use the following information to determine the local or remote Oracle VM installation that best serves your needs.

Media Delivery Method	Additional Requirements
Local assisted Oracle VM installation – Uses Oracle System Assistant. (Recommended)	A monitor, USB keyboard and mouse, a USB device, and Oracle VM distribution media. For more information, see “ Assisted Oracle VM Installation ” on page 11.
Remote assisted Oracle VM installation – Uses Oracle System Assistant. (Recommended)	Oracle ILOM Remote Console application, a redirected CD/DVD drive or ISO image file, and Oracle VM distribution media. For more information, see “ Assisted Oracle VM Installation ” on page 11.

Media Delivery Method	Additional Requirements
Local Oracle VM is installed using a CD/DVD drive – Uses a physical CD/DVD drive connected to the server.	A monitor, USB keyboard and mouse, a USB CD/DVD drive, and Oracle VM distribution media. For more information, see “Manual Oracle VM Installation” on page 11.
Remote Oracle VM is installed using a CD/DVD drive or CD/DVD ISO image – Uses a redirected physical CD/DVD drive on a remote system running the Oracle ILOM Remote Console application.	A remote system with a browser, an attached physical CD/DVD drive, Oracle VM distribution media, and network access to the server’s management port. For more information, see “Manual Oracle VM Installation” on page 11.

Assisted Oracle VM Installation

This is the recommended method for installing Oracle VM on your server. This method involves using Oracle System Assistant. You deliver the Oracle VM installation media on either a local or remote CD/DVD drive, USB device, or CD/DVD image. The Oracle System Assistant guides the installation process and gathers and installs the needed drivers when necessary. Your server must support Oracle System Assistant, and it must be installed in the server.

Manual Oracle VM Installation

With this method, you deliver the Oracle VM distribution media on either a local or remote CD/DVD drive, USB device, or CD/DVD image. You also need to install any necessary drivers. The drivers for your server are available on the server’s internal Oracle System Assistant USB flash drive (which must be installed for the drivers to be accessible) and from the My Oracle Support web site as either OS-specific and server-specific packages or as an ISO image file. To install Oracle VM, use the distribution media’s installation wizard.

Oracle System Assistant Overview

Oracle System Assistant is a single-server system management tool for Oracle x86 servers. Oracle System Assistant integrates Oracle’s single system management products, and a selection of related software to provide a suite of tools that allow for the quick and convenient configuration and maintenance of your server.

You can access Oracle System Assistant locally, using a local console connection, or remotely, using the Oracle ILOM Remote Console application.

If you just completed the installation of the server into the rack, then using Oracle System Assistant locally (while physically present at the server) can be a fast and efficient method of starting up the server. Once the server is operational, you can conveniently access Oracle System Assistant remotely while still retaining full-featured functionality.

The components of Oracle System Assistant include:

- Oracle System Assistant application
- Oracle Hardware Management Pack
- User interface access to configuration and maintenance provisioning tasks (including Install OS task)
- Oracle System Assistant command-line environment
- Operating system drivers and tools
- Server-specific firmware
- Server-related documentation

Oracle System Assistant resides inside the server as an embedded storage device (USB flash drive) and is factory configured with a server-specific version of tools and drivers that is maintained as such through use of online updates.

For more information about Oracle System Assistant, see the following topics:

- [“Oracle System Assistant Tasks” on page 12](#)
- [“Get Updates and Install OS Tasks” on page 13](#)
- [“Obtaining Oracle System Assistant” on page 13](#)

Oracle System Assistant Tasks

Oracle System Assistant combines a selected set of the most common and useful single-server management provisioning tasks.

The following information and tasks allow for quick and convenient server setup and ongoing server management:

- System overview and system inventory information
- Online update acquisition for all components (including tools, drivers, and firmware)
- System firmware (BIOS and Oracle ILOM) and host bus adapter firmware updates
- RAID, Oracle ILOM, and BIOS configuration
- Assisted OS installation

- Network configuration
- Disable feature and embedded media integrity check
- Multilingual keyboard
- Oracle System Assistant shell terminal window allowing use of the runtime environment
- Oracle Hardware Management Pack access (using Oracle System Assistant shell)
- Oracle System Assistant recovery

Get Updates and Install OS Tasks

If you want to use Oracle System Assistant to update the OS drivers and other firmware components (such as BIOS, Oracle ILOM, HBAs, and expanders, if applicable), you should perform the Get Updates task before you install the OS.

Oracle System Assistant's Install OS task provides a guided installation of a supported OS. You supply the OS installation media, and Oracle System Assistant guides you through the installation process. It then fetches the appropriate drivers based on your server hardware configuration. The Install OS task is not available for all server supported operating systems.

Obtaining Oracle System Assistant

Since your server supports Oracle System Assistant, the Oracle System Assistant USB flash drive might be already installed in your server. If it is installed, you can update to the latest software release using the Oracle System Assistant Get Updates task. If Oracle System Assistant is installed in your server, but it has been corrupted or overwritten, then download the Oracle System Assistant Updater image from the My Oracle Support web site. For download instructions, see *Sun Server X4-2L Installation Guide*, "Getting Server Firmware and Software Updates" on page 31.

For more information about how to determine if your server has Oracle System Assistant or how to perform updates and recovery procedures, refer to the *Oracle X4 Series Servers Administration Guide* at:
<http://www.oracle.com/goto/x86AdminDiag/docs>.

Related Information

- *Oracle X4 Series Servers Administration Guide* at:
<http://www.oracle.com/goto/x86AdminDiag/docs>

Preparing to Install Oracle VM

This section describes how to prepare the server for installing Oracle VM.

Description	Links
Verify and set server BIOS settings to factory defaults.	“Verify the BIOS Factory Defaults” on page 15
Set BIOS VT-d and SR-IOV options to disabled.	“Disable VT-d and SR-IOV in BIOS” on page 18
Configure RAID on the server.	“Configuring RAID” on page 21

Related Information

- [“Installing Oracle VM on a Single System Using Oracle System Assistant” on page 24](#)
- [“Installing Oracle VM on a Single System Using Media” on page 28](#)
- [“Installing Oracle VM Using Local or Remote Media” on page 28](#)

▼ Verify the BIOS Factory Defaults

Note – If the server is newly installed and this is the first time that an operating system has been installed, then BIOS is probably configured to its default settings and you do not have to perform this task.

In the BIOS Setup Utility, you can set optimal defaults, as well as view and edit BIOS settings as needed. Any changes you make in the BIOS Setup Utility (through F2) are permanent until the next time you change them.

In addition to using F2 to view or edit the system's BIOS settings, you can use F8 during the BIOS start-up to specify a temporary boot device. If you use F8 to set a temporary boot device, this change is only in effect for the current system boot. The permanent boot device specified through F2 will be in effect after booting from the temporary boot device.

Ensure that the following requirements are met:

- The server is equipped with a hard disk drive (HDD) or solid state drive (SSD).
- The HDD or SSD is properly installed in the server. For instructions, see the [Sun Server X4-2L Service Manual, "Servicing Storage Drives and Rear Drives \(CRU\)"](#) on page 47.
- A console connection is established to the server. For details, see ["Selecting the Console Display Option"](#) on page 4.

1. Reset or power on the server.

For example to reset the server:

- **From the local server**, press the Power button (approximately 1 second) on the front panel of the server to power off the server, then press the Power button again to power on the server.
- **From the Oracle ILOM web interface**, select Host Management > Power Control, then select Reset from the Select Action list box.
- **From the Oracle ILOM CLI**, type: `reset /System`

The BIOS screen appears.



2. When prompted in the BIOS screen, press F2 to access the BIOS Setup Utility.

After a few moments, the BIOS Setup Utility appears.

3. To ensure that the factory defaults are set, do the following:

a. Press F9 to automatically load the factory default settings.

A message appears prompting you to continue this operation by selecting OK or to cancel this operation by selecting CANCEL.

b. In the message, highlight OK then press Enter.

The BIOS Setup Utility screen appears with the cursor highlighting the first value in the system time field.

4. In the BIOS Setup Utility, do the following to edit the values associated with the system time or date.

a. Highlight the values you want to change.

Use up or down arrow keys to change between the system time and date selection.

b. To change the values in the highlighted fields use these keys:

- PLUS (+) to increment the current value shown
- MINUS (-) to decrement the current value shown
- ENTER to move the cursor to the next value field

5. To access the boot settings, select the Boot menu.

The Boot Settings menu appears.

6. In the Boot Settings menu, use the down arrow key to select Boot Device Priority, then press Enter.

The Boot Device Priority menu appears listing the order of the known bootable devices. The first device in the list has the highest boot priority.

7. In the Boot Device Priority menu, do the following to edit the first boot device entry in the list:

a. Use the up and down arrow keys to select the first entry in the list, then press Enter.

b. In the Options menu, use the up and down arrow keys to select the default permanent boot device, then press Enter.

Note – You can change the boot order for other devices in the list by repeating Steps 7a and 7b for each device entry you want to change.

The device strings listed on the Boot Device Priority list and Options menu are in the format of: *device type*, *slot indicator*, and *product ID string*.

8. To save changes and exit the BIOS Setup Utility, press F10.

Alternatively, you can save the changes and exit the BIOS Setup Utility by selecting Save and Reset from the Save & Exit menu. A message appears prompting you to save changes and exit setup. In the message dialog, select OK, then press Enter.

Note – When using the Oracle ILOM Remote Console, F10 is trapped by the local OS. You must use the F10 option listed in the Keyboard drop-down menu that is available at the top of the Remote Console application.

▼ Disable VT-d and SR-IOV in BIOS

You must disable Virtualization Technology for Directed I/O (VT-d) in BIOS before you can use Oracle VM. This is necessary because input/output memory management unit (I/O MMU) is not supported in Oracle VM 3.2. You must also disable Single Root I/O Virtualization (SR-IOV) in BIOS before you can use Oracle VM.

To disable the VT-d and SR-IOV settings in BIOS, perform the following steps:

1. Reset or power on the server.

For example to reset the server:

- **From the local server**, press the Power button (approximately 1 second) on the front panel of the server to power off the server, then press the Power button again to power on the server.
- **From the Oracle ILOM web interface**, select Host Management > Power Control, then select Reset from the Select Action list box.
- **From the Oracle ILOM CLI**, type: `reset /System`

The BIOS screen appears.



2. When prompted in the BIOS screen, press F2 to access the BIOS Setup Utility.

After a few moments, the BIOS Setup Utility appears.

3. Use the right arrow key to navigate to the IO menu.

The IO Menu screen appears.



4. Use the up and down arrow keys to navigate to the IO Virtualization menu option, and press Enter.

The IO Virtualization menu appears.



5. Use the up and down arrow keys to navigate to the VT-d menu option, and press Enter.

The VT-d dialog box appears.

6. In the VT-d dialog box use the up or down arrow keys to select Disabled and press Enter.

VT-d option is now disabled.

7. Use the up or down arrow keys to navigate to the SR-IOV menu option, and press Enter.

The SR-IOV dialog box appears.

8. In the SR-IOV dialog box, use the up and down arrow keys to select Disabled and press Enter.

SR-IOV option is now disabled.

9. Press the ESC key to return the IO Menu top level, and then save and exit BIOS.

Configuring RAID

If you want to use a redundant array of independent disks (RAID), you must configure RAID on server's storage drives before you install Oracle VM. For instructions for configuring RAID, refer to the *Sun Server X4-2L Installation Guide*, "Configuring Server Drives for OS Installation" on page 115.

Related Information

- *Oracle X4 Series Servers Administration Guide* at:
<http://www.oracle.com/goto/x86AdminDiag/docs>

Installing Oracle VM

This section provides instructions for installing Oracle VM onto the server.

Description	Links
Pre-installation requirements.	“Before You Begin” on page 23
Using Oracle System Assistant to install Oracle VM.	“Installing Oracle VM on a Single System Using Oracle System Assistant” on page 24
Using media to install the Oracle VM software on a single server.	“Installing Oracle VM on a Single System Using Media” on page 28
Performing post installation tasks.	“Post Installation Tasks for Oracle VM” on page 32

Before You Begin

Ensure that the following requirements are met:

- If you want to configure RAID on the server’s storage drives, you must do so before you install Oracle VM. For instructions for configuring RAID, see the [Sun Server X4-2L Installation Guide](#), “Configuring Server Drives for OS Installation” on page 115.

Note – If the server is equipped with the Sun Storage 6 Gb SAS PCIe RAID, Internal HBA (SGX-SAS6-R-INT-Z), you must create a RAID volume and make it bootable before installing Oracle VM; otherwise, the HBA will not be able to identify the server’s storage drives.

- The console display option should have been selected and set up prior to performing the installation. For more information about this option and setup instructions, see [“Selecting the Console Display Option” on page 4](#).

- The boot media option should have been selected and set up prior to performing the installation. For more information about this option and setup instructions, see [“Selecting the Boot Media Option”](#) on page 6.
- The installation target option should have been selected and set up prior to performing the installation. For more information about this option and setup instructions, see [“Selecting the Installation Target Option”](#) on page 8.
- Verify that the BIOS settings are set to the defaults. For instructions on how to verify and, if necessary, set the BIOS settings, see [“Verify the BIOS Factory Defaults”](#) on page 15.
- For local installation, have the Oracle VM installation media available to insert into the attached physical CD/DVD-ROM drive when prompted.
- For remote installation, insert the Oracle VM installation media into the Oracle ILOM Remote Console system’s CD/DVD-ROM drive. Ensure that you have selected CD-ROM from the Oracle ILOM Remote Console system’s Devices menu.
- If you are using a Oracle VM image, ensure that the ISO image is accessible from the Oracle ILOM Remote Console system. Ensure that you have selected CD-ROM Image from the Oracle ILOM Remote Console system’s Devices menu.
- Ensure that two systems with static IP addresses have been set up.
 - One system to install Oracle VM Server.
 - One system for Oracle VM Manager with either Oracle Linux (release 5.5, 64-bit, or a subsequent release) or Red Hat Enterprise Linux (release 6, 64-bit or a subsequent release).
- For additional preinstallation tasks and requirements, refer to the [“Installing Oracle VM Server on X86”](#) section in the *Oracle VM Installation and Upgrade Guide for Release 3.2.1* at: http://docs.oracle.com/cd/E35328_01/index.html.
- Gather the Oracle VM documentation library so that you can use it in conjunction with the instructions provided in this section. The Oracle VM 3.2.1 documentation library is available at:
http://docs.oracle.com/cd/E35328_01/index.html.

Installing Oracle VM on a Single System Using Oracle System Assistant

The Oracle System Assistant Install OS task is the recommended method for installing Oracle VM on the server.

- [“Install Oracle VM Using Oracle System Assistant”](#) on page 25

▼ Install Oracle VM Using Oracle System Assistant

Before you begin this procedure, do the following:

- Perform the steps in “Preparing to Install Oracle VM” on page 15.
- If you want to configure the boot drive (that is, the storage drive onto which you are installing Oracle VM) for RAID, you must do so before you install Oracle VM. For instructions on how to configure RAID on your server, see the *Sun Server X4-2L Installation Guide*, “Configuring Server Drives for OS Installation” on page 115.

1. Ensure that the installation media is available to boot.

- **For Distribution CD/DVD.** Insert the Oracle VM media (CD labeled number 1 or the single DVD) into the local or external CD/DVD-ROM drive.
- **For ISO image.** Ensure that the ISO images are available and that the Oracle ILOM Remote Console application is aware of the first ISO image location.
For additional information about how to set up the installation media, see “Selecting the Boot Media Option” on page 6.

2. To launch Oracle System Assistant directly from the Oracle ILOM Interface (recommended), perform the following steps; otherwise proceed to Step 3.

- a. In the Actions panel on the Oracle ILOM web interface (shown below), click the Oracle System Assistant Launch button.

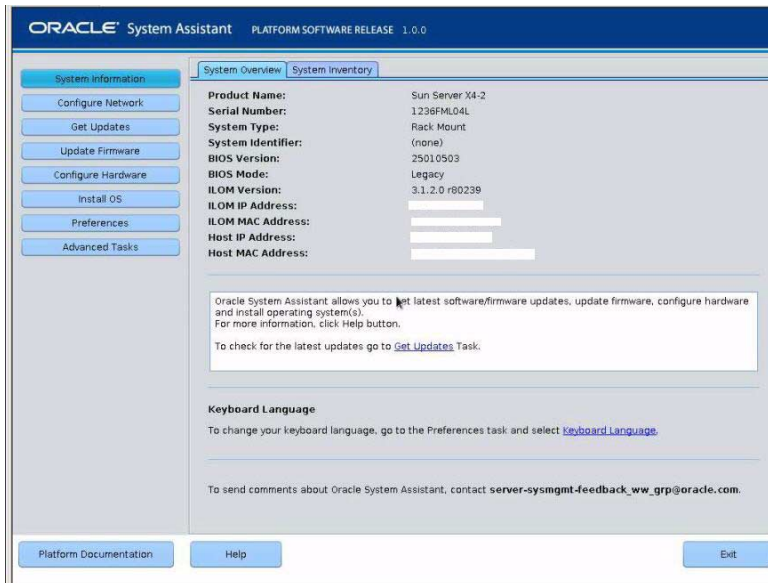
The screenshot displays the Oracle ILOM web interface. The top navigation bar includes the Oracle logo, the text "ORACLE Integrated Lights Out Manager", and user information: "User: root Role: qucro BP: Hostname: scst05-0a11bd67". A sidebar on the left lists various system information categories such as Processors, Memory, Power, Cooling, Storage, Networking, PCI Devices, and Firmware. The main content area is divided into several sections:

- Summary:** A section for viewing system summary information, including a "General Information" table and an "Actions" panel.
- General Information Table:**

Field	Value
System Type	Rack Mount
Model	Sun Server X4-2
Part Number	1237FM506L
Serial Number	-
System Identifier	-
System Firmware Version	3.1.2.0
Primary Operating System	Oracle System Assistant 1.0.0.80756
Host Primary MAC Address	-
ILOM Address	-
ILOM MAC Address	-
- Actions Panel:** Contains buttons for "Power State" (ON/OFF), "Locator Indicator" (ON/OFF), "Oracle System Assistant" (Launch), "System Firmware Update" (Update), and "Remote Console" (Launch).
- Status Table:**

Subsystem	Status	Details	Inventory
Processors	OK	Processor Architecture: x86_64-bit Processor Summary: One Intel Xeon Processor 7500 Series	Processors (Installed / Maximum): 1 / 2
Memory	OK	Installed RAM Size: 8 GB	DIMMs (Installed / Maximum): 1 / 16
Power	OK	Permitted Power Consumption: 479 watts Actual Power Consumption: 154 watts	PSUs (Installed / Maximum): 2 / 2
Cooling	OK	Inlet Air Temperature: 29 °C Exhaust Air Temperature: 23 °C	Chassis Fans (Installed / Maximum): 8 / 8 PSU Fans (Installed / Maximum): Not Supported / Not Supported
Storage	OK	Installed Disk Size: 245 GB Disk Controllers: 1	Internal Disks (Installed / Maximum): 4 / 8
Network/IO	OK		Installed Ethernet NICs: 1

The Oracle System Assistant Overview screen appears.



b. Proceed to [Step 4](#).

3. To launch Oracle System Assistant using the Oracle ILOM Remote Console and BIOS, perform the following steps:

a. From the Oracle ILOM web interface, click Summary > Launch Remote Console.

The Oracle ILOM Remote Console screen appears.

b. Reset or power on the server.

For example:

- From the local server, press the Power button (approximately 1 second) on the front panel of the server to power off the server, then press the Power button again to power on the server.
- From the Oracle ILOM web interface, click Host Management > Power Control and select Reset from the Select Action list box.
- From the Oracle ILOM CLI, type: **reset /System**

The BIOS screen appears in the Oracle ILOM Remote Console.



Note – The next events occur very quickly; therefore, focused attention is needed for the following steps. Watch carefully for these messages as they appear on the screen for a brief time. You might want to enlarge the size of your screen to eliminate scroll bars.

c. Press the F9 key.

The Oracle System Assistant System Overview screen appears.

4. To update to the latest software release package, click the Get Updates button in Oracle System Assistant.

This action ensures that the server has the latest software release package installed before you begin the OS installation.

Note – Server web access is required to update Oracle System Assistant.

5. To update the server firmware, click the Update Firmware button.

This action ensures that the server has the latest firmware and BIOS before you begin the OS installation.

6. To install Oracle VM, click the Install OS button.

The Install Operating System screen appears.

7. From the Supported OS drop-down list, select your OS.

8. In the Current BIOS mode portion of the screen, select Legacy BIOS.

Oracle VM only supports Legacy BIOS; therefore, do not select UEFI.

9. In the Select your install media location section of the screen, select the location of the installation media.

This is the location of the OS distribution media.

Note – Oracle System Assistant does not support Preboot eXecution Environment (PXE) installs.

10. **In the Select boot disk portion of the screen, select device to which Oracle VM will be installed.**
11. **Click View Installation Options.**
The Installation Options dialog appears.
12. **In the Installation Options dialog, deselect any items that you do not want to install.**

Note – The Oracle VM and Drivers options are mandatory and cannot be deselected.

13. **At the bottom of the Install OS screen, click the Install OS button.**
14. **To confirm your selection of boot device, click Yes.**
To change boot devices, click No, and select another device.
15. **Follow the prompts until the installation is finished.**
The server boots.

Installing Oracle VM on a Single System Using Media

This section provides information about installing Oracle VM 3.2 for x86 (64-bit) software.

- [“Installing Oracle VM Using Local or Remote Media” on page 28](#)
- [“Post Installation Tasks for Oracle VM” on page 32](#)

Installing Oracle VM Using Local or Remote Media

The following procedure describes the steps for installing Oracle VM. The procedure assumes that you are booting the Oracle VM installation software from one of the following sources:

- Oracle VM 3.2 CD or DVD media set (internal or external CD or DVD)
- Oracle VM 3.2 ISO software image (network repository)

Note – The Oracle VM ISO image can be used for remote installation or for creating an installation CD or DVD.

Refer to the following procedure to install Oracle VM:

- [“Install Oracle VM Server Using Local or Remote Media” on page 29](#)

▼ Install Oracle VM Server Using Local or Remote Media

1. Ensure that the Oracle VM Server install media is available to boot.

- **For Distribution CD/DVD.** Insert the Oracle VM Server media boot disk into the local or remote CD/DVD-ROM drive.
- **For ISO images.** Ensure that the ISO images are available and that the boot disc image (CD labeled number 1 or DVD) has been selected in the Oracle ILOM Remote Console application (Devices menu > CD-ROM Image).

For additional information about how to set up the installation media, see [“Selecting the Boot Media Option” on page 6](#).

2. Reset or power on the server.

For example, to reset the server:

- **From the local server,** press the Power button (approximately 1 second) on the front panel of the server to power off the server, then press the Power button again to power on the server.
- **From the Oracle ILOM web interface,** select Host Management > Power Control and select Reset from the Select Action list box.
- **From the Oracle ILOM CLI,** type: `reset /System`
The BIOS screen appears.



Note – The next events occur very quickly; therefore, focused attention is needed for the following steps. Watch carefully for these messages as they appear on the screen for a brief time. You might want to enlarge the size of your screen to eliminate scroll bars.

3. In the BIOS screen, press F8 to specify a temporary boot device for the Oracle VM Server installation.

The Please Select Boot Device menu appears.

4. In the Please Select Boot Device menu, select either the external or virtual CD/DVD device as the boot device, then press Enter.

The device strings listed in the Boot Device menu are in the following format: *device type, slot indicator, and product ID string.*

After a few seconds, the splash screen for the Oracle VM Server appears.



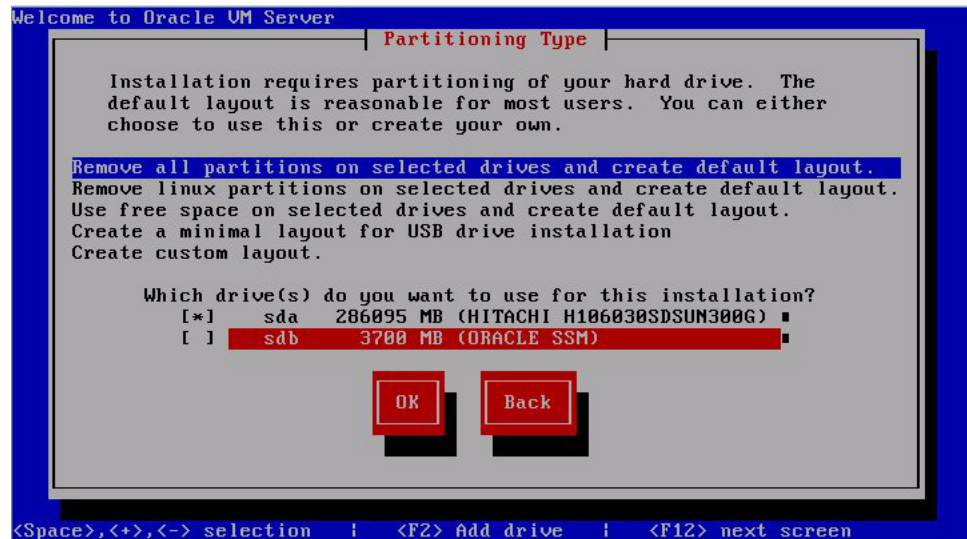
5. Press Enter to begin the installation.

If you do not press a key, after one minute, the installer automatically starts. The installer is only available in text mode.

6. Refer to the “Installing Oracle VM Server on X86” section in the *Oracle VM Installation and Upgrade Guide for Release 3.2.1* at: http://docs.oracle.com/cd/E35328_01/index.html and follow the on-screen prompts to install Oracle VM Server and Oracle VM Agent.

The *Oracle VM Installation and Upgrade Guide for Release 3.2.1* provides step-by-step instructions for installing Oracle VM.

7. As you progress through the on-screen prompts, the Partitioning Type screen appears.



Note – Although the next step is described in the *Oracle VM Installation and Upgrade Guide for Release 3.2.1* at: http://docs.oracle.com/cd/E35328_01/index.html, it is included here because you must exercise caution when you select the drive onto which to install Oracle VM.

8. In the Partitioning Type screen, do the following:

a. Select one of following partition layouts:

- Remove all partitions and create default layout.
- Remove all Linux partitions on select drives and create default layout.
- Use the free space on selected drives and create default layout.
- Create a minimal layout for USB drive installation.
- Create a custom layout.

A default layout will satisfy the requirements of most users.

b. Select the drive(s) you want to use for the installation.



Caution – In the Partitioning Type screen shown above, the Oracle SSM drive is the Oracle System Assistant USB flash drive. You might have to scroll to the bottom of the screen to see this drive. You should *never* select the Oracle SSM drive as the software installation drive. Installing Oracle VM to the Oracle SSM drive will overwrite the Oracle System Assistant software and Oracle System Assistant will have to be restored. For instructions for restoring Oracle System Assistant, see the *Oracle X4 Series Servers Administration Guide* at: <http://www.oracle.com/goto/x86AdminDiag/docs>.

c. Click OK to continue the installation.

9. To complete the installation, refer back to the *Oracle VM Installation and Upgrade Guide for Release 3.2.1* at: http://docs.oracle.com/cd/E35328_01/index.html **and follow the instructions.**

Note – The Oracle VM installation will require two passwords: one for the root Oracle VM Server account and one for the Oracle VM Agent.

10. After completing the installation of Oracle VM Server and Oracle VM Agent, do one of the following:

- If you *do not* have an Oracle VM Manager configured to manage the Oracle VM Server, you will need to install it before proceeding to “[Post Installation Tasks for Oracle VM](#)” on page 32.

For instructions for installing Oracle VM Manager, see the *Oracle VM Installation and Upgrade Guide for Release 3.2.1* at:

http://docs.oracle.com/cd/E35328_01/index.html.

- If you already have an Oracle VM Manager configured to manage the Oracle VM Server, proceed to “[Post Installation Tasks for Oracle VM](#)” on page 32.

Post Installation Tasks for Oracle VM

After completing Oracle VM software installation, review the following post installation tasks and, if necessary, perform the tasks that are applicable to your system.

- “[Update Oracle VM Software](#)” on page 33
- “[Manage Oracle VM Resources](#)” on page 33

Update Oracle VM Software

The Oracle VM installation media might not contain the most up-to-date versions of the software. If necessary, update the Oracle VM software with the latest updates. For download instructions, go to this web site:

<http://edelivery.oracle.com/oraclevm>

Manage Oracle VM Resources

To learn how to configure, access, and manage Oracle VM resources, refer to the Oracle VM 3.2.1 Documentation Library at:

http://docs.oracle.com/cd/E35328_01/index.html

Configuring Network Interfaces

This section contains information about:

- [“NIC Connectors” on page 35](#)

NIC Connectors

The network interface card connectors are labeled physically on the server as follows.

TABLE: NIC Connector Label

NIC Connector Label	Interface Type
net0	First interface (ixgbe 0)
net1	Second interface (ixgbe 1)
net2	Third interface (ixgbe 2)
net3	Fourth interface (ixgbe 3)

Note – NET 2 and NET 3 are nonfunctional in single-processor systems.

Index

B

BIOS

- procedure for editing and viewing settings, 16, 18
- verification of factory defaults settings
Oracle VM, 15

boot disc image

- Oracle VM, 29

boot media option

- selecting, 6

C

configuring

- network interface cards
Oracle VM, 35
- RAID, 21

Console display

- options, 4

Console display option

- selecting, 4

H

Hardware Management Pack, 12

I

install boot media, 6

installation

- using local or remote media, 29
Oracle VM, 28
- using on single system using media
Oracle VM, 28
- using Oracle System Assistant
Oracle VM, 24

installation method

- manual
Oracle VM, 11

single server

- Oracle VM, 10
- using Oracle System Assistant
Oracle VM, 11

installation methods

- boot media options, 6

installation options

- Oracle VM, 9

installation target

- fibre channel storage area network (SAN)
device, 9
- local storage drive, 9
- options, 8

installation target option

- selecting, 8

installing Oracle VM

- overview, 1

ISO image

- Oracle VM, 2, 29
- Oracle VM Server, 29

L

local boot media

- requirements, 6
- setting up, 7

local console

- set up, 4

N

network interface cards

- configuring
Oracle VM, 35
- labeling and type
Oracle VM, 35

network interface configuration, 35

O

Oracle System Assistant

- application OS installation task
 - Oracle VM, 13
- embedded storage device, 12
- obtaining, 13
- overview, 11
- tasks
 - Oracle VM, 12
- USB flash drive restriction, 8

Oracle VM

- boot disc image, 29
- configuring network interface, 35
- installation procedure for VM Server, 29
- ISO image, 2, 29
- managing resources, 33
- media installation using local or remote media, 28
- post installation tasks, 32
- updating software, 33

Oracle VM installation

- task map, 1

Oracle VM Server

- ISO image, 29

Oracle VM software

- downloading updates, 33
- versions supported, 3

overview of Oracle VM installation, 1

Oracle VM installation, 1

U

updating software

- Oracle VM, 33

V

versions supported

- Oracle VM software, 3

P

post installation tasks

- Oracle VM, 32

product notes

- web site, 3

R

RAID

- configuring, 21

remote boot media

- requirements, 6

setting up

- Oracle VM software, 7

remote console

- set up, 5

T

task map