

Oracle® Fusion Middleware

Reference Process Models User's Guide for Oracle Application
Integration Architecture Foundation Pack

11g Release 1 (11.1.1.5.0)

E17368-03

April 2011

Oracle Fusion Middleware Reference Process Models User's Guide for Oracle Application Integration Architecture Foundation Pack, 11g Release 1 (11.1.1.5.0)

E17368-03

Copyright © 2011, Oracle and/or its affiliates. All rights reserved.

Primary Author: Rosemarie Hall

This software and related documentation are provided under a license agreement containing restrictions on use and disclosure and are protected by intellectual property laws. Except as expressly permitted in your license agreement or allowed by law, you may not use, copy, reproduce, translate, broadcast, modify, license, transmit, distribute, exhibit, perform, publish, or display any part, in any form, or by any means. Reverse engineering, disassembly, or decompilation of this software, unless required by law for interoperability, is prohibited.

The information contained herein is subject to change without notice and is not warranted to be error-free. If you find any errors, please report them to us in writing.

If this software or related documentation is delivered to the U.S. Government or anyone licensing it on behalf of the U.S. Government, the following notice is applicable:

U.S. GOVERNMENT RIGHTS Programs, software, databases, and related documentation and technical data delivered to U.S. Government customers are "commercial computer software" or "commercial technical data" pursuant to the applicable Federal Acquisition Regulation and agency-specific supplemental regulations. As such, the use, duplication, disclosure, modification, and adaptation shall be subject to the restrictions and license terms set forth in the applicable Government contract, and, to the extent applicable by the terms of the Government contract, the additional rights set forth in FAR 52.227-19, Commercial Computer Software License (December 2007). Oracle USA, Inc., 500 Oracle Parkway, Redwood City, CA 94065.

This software is developed for general use in a variety of information management applications. It is not developed or intended for use in any inherently dangerous applications, including applications which may create a risk of personal injury. If you use this software in dangerous applications, then you shall be responsible to take all appropriate fail-safe, backup, redundancy, and other measures to ensure the safe use of this software. Oracle Corporation and its affiliates disclaim any liability for any damages caused by use of this software in dangerous applications.

Oracle is a registered trademark of Oracle Corporation and/or its affiliates. Other names may be trademarks of their respective owners.

This software and documentation may provide access to or information on content, products, and services from third parties. Oracle Corporation and its affiliates are not responsible for and expressly disclaim all warranties of any kind with respect to third-party content, products, and services. Oracle Corporation and its affiliates will not be responsible for any loss, costs, or damages incurred due to your access to or use of third-party content, products, or services.

Contents

Preface	v
Oracle AIA Guides	v
Additional Resources	v
Documentation Accessibility	vi
Related Documents	vi
Conventions	vi
1 Oracle Business Process Modeling and Analysis Overview	
1.1 Our Understanding of Business Process Management	1-1
1.2 What is the Challenge?	1-1
1.3 What is the Answer?	1-2
1.4 What is a Business Process?	1-2
2 Modeling Approach and Methodology	
2.1 Oracle's Approach to Business Process Modeling and Analysis (BPA)	2-1
2.2 Methodology and Organization	2-1
2.2.1 Authoritative and Guiding Sources for Industry Process Best Practices	2-3
3 Modeling Standards and Notation	
3.1 Level 0	3-1
3.2 Level 1	3-2
3.3 Level 2	3-3
3.4 Level 3	3-4
3.5 Level 4	3-6
3.6 Functional Allocation Diagram	3-6
4 Modeling Tool and Viewer	
4.1 Overview of the Modeling Tool and Viewer	4-1
4.2 Describing the Modeling Tool and Viewer User Experience	4-2
Index	

List of Figures

2-1	Hierarchical Organization of Model Content	2-2
2-2	Multiple Sets of Implementation-Specific Models	2-3
3-1	Sample Model: Level 0	3-2
3-2	Allowable Symbols: Level 0	3-2
3-3	Sample Model: Level 1	3-3
3-4	Allowable Symbols: Level 1	3-3
3-5	Sample Model: Level 2	3-4
3-6	Allowable Symbols: Level 2	3-4
3-7	Sample Model (1 of 2): Level 3	3-5
3-8	Sample Model (2 of 2): Level 3	3-5
3-9	Allowable Symbols: Level 3	3-6
3-10	Sample FAD Diagram	3-6
3-11	Allowable Symbols: FAD.....	3-6
3-12	Functional Business Process View Drill-down, All Four Levels (Order Fulfillment) and the FAD 3-7	
3-13	Composite Business Process View Drill-Down, Level 0 (Order to Cash).....	3-8
3-14	Composite Business Process View Drill-Down, Level 1 (Order to Cash).....	3-8
4-1	Business Process Publisher Logon Page	4-2
4-2	Business Process Publisher Language Selection.....	4-3
4-3	Business Process Publisher Homepage	4-3
4-4	Contents Module Selection.....	4-4
4-5	Expanded Groups in the Navigation Tree	4-4
4-6	View Controls	4-5
4-7	Child Model Navigation	4-5
4-8	Level 3 Model	4-6
4-9	Object Characteristics Pane	4-6
4-10	Oracle Enterprise Repository Login Page	4-7
4-11	AIA Enterprise Business Service Artifact Entry in Oracle Enterprise Repository	4-7

Preface

Welcome to *Oracle Fusion Middleware Reference Process Models User's Guide for Oracle Application Integration Architecture Foundation Pack 11g Release 1 (11.1.1.5.0)*.

Oracle Application Integration Architecture (AIA) provides the following guides and resources for this release:

Oracle AIA Guides

- *Oracle Fusion Middleware Installation and Upgrade Guide for Oracle Application Integration Architecture Foundation Pack 11g Release 1 (11.1.1.5.0)*
- *Oracle Fusion Middleware Concepts and Technologies Guide for Oracle Application Integration Architecture Foundation Pack 11g Release 1 (11.1.1.5.0)*
- *Oracle Fusion Middleware Developer's Guide for Oracle Application Integration Architecture Foundation Pack 11g Release 1 (11.1.1.5.0)*
- *Oracle Fusion Middleware Infrastructure Components and Utilities User's Guide for Oracle Application Integration Architecture Foundation Pack 11g Release 1 (11.1.1.5.0)*
- *Oracle Fusion Middleware Reference Process Models User's Guide for Oracle Application Integration Architecture Foundation Pack 11g Release 1 (11.1.1.5.0)*
- *Oracle Fusion Middleware Migration Guide for Oracle Application Integration Architecture Foundation Pack 11g Release 1 (11.1.1.5.0)*
- *Oracle Fusion Middleware Product-to-Guide Index for Oracle Application Integration Architecture Foundation Pack 11g Release 1 (11.1.1.5.0)*

Additional Resources

The following resources are also available:

Resource	Location
Release Notes	Oracle Technology Network: http://www.oracle.com/technology/
Documentation updates	Oracle Technology Network: http://www.oracle.com/technology/

Documentation Accessibility

Our goal is to make Oracle products, services, and supporting documentation accessible to all users, including users that are disabled. To that end, our documentation includes features that make information available to users of assistive technology. This documentation is available in HTML format, and contains markup to facilitate access by the disabled community. Accessibility standards will continue to evolve over time, and Oracle is actively engaged with other market-leading technology vendors to address technical obstacles so that our documentation can be accessible to all of our customers. For more information, visit the Oracle Accessibility Program Web site at <http://www.oracle.com/accessibility/>.

Accessibility of Code Examples in Documentation

Screen readers may not always correctly read the code examples in this document. The conventions for writing code require that closing braces should appear on an otherwise empty line; however, some screen readers may not always read a line of text that consists solely of a bracket or brace.

Accessibility of Links to External Web Sites in Documentation

This documentation may contain links to Web sites of other companies or organizations that Oracle does not own or control. Oracle neither evaluates nor makes any representations regarding the accessibility of these Web sites.

Access to Oracle Support

Oracle customers have access to electronic support through My Oracle Support. For information, visit <http://www.oracle.com/support/contact.html> or visit <http://www.oracle.com/accessibility/support.html> if you are hearing impaired.

Related Documents

For more information, see the following documents in the Oracle SOA Suite and Oracle Business Process Management Suite 11g Release 1 (11.1.1.5.0) documentation set:

- *Oracle Fusion Middleware Installation Guide for Oracle SOA Suite and Oracle Business Process Management Suite 11g Release 1 (11.1.1.5.0)*
- *Oracle Fusion Middleware Administrator's Guide for Oracle SOA Suite and Oracle Business Process Management Suite 11g Release 1 (11.1.1.5.0)*
- *Oracle Fusion Middleware Developer's Guide for Oracle SOA Suite 11g Release 1 (11.1.1.5.0)*
- *Oracle Fusion Middleware Security and Administrator's Guide for Web Services 11g Release 1 (11.1.1.5.0)*
- *Oracle Fusion Middleware User Guide for Oracle Enterprise Repository 11g Release 1 (11.1.1.5.0)*

Conventions

The following text conventions are used in this document:

Convention	Meaning
boldface	Boldface type indicates graphical user interface elements associated with an action, or terms defined in text or the glossary.
<i>italic</i>	Italic type indicates book titles, emphasis, or placeholder variables for which you supply particular values.
monospace	Monospace type indicates commands within a paragraph, URLs, code in examples, text that appears on the screen, or text that you enter.

Oracle Business Process Modeling and Analysis Overview

This chapter discusses the AIA Reference Process Models delivered with an Oracle Application Integration Architecture Release.

Refer to My Oracle Support note 824633.1 titled Oracle Application Integration Architecture 2.0.1 - 11gR1x: List of Delivered Reference Process Models for a complete list of models delivered with an AIA release.

This chapter includes the following sections:

- [Section 1.1, "Our Understanding of Business Process Management"](#)
- [Section 1.2, "What is the Challenge?"](#)
- [Section 1.3, "What is the Answer?"](#)
- [Section 1.4, "What is a Business Process?"](#)

1.1 Our Understanding of Business Process Management

Business Process Management (BPM) includes a set of activities that organizations perform to either optimize their business processes or adapt them to new organizational needs.

Important elements include business process modeling and analysis (BPA), orchestration (BPEL), and business activity monitoring (BAM).

This guide focuses on the BPA element, outlines Oracle's approach and methodology, and describes the business process models delivered with an Oracle Application Integration Architecture Release.

1.2 What is the Challenge?

Coordinating business processes is not simple or linear as might be portrayed in the world of traditional task management.

Business is constantly changing, messy, unordered and chaotic; work activities and tasks have to be processed in parallel.

Coordination requires the spawning and asynchronous execution of nested tasks and parallel activities.

And it is not just tasks that occur in parallel, but decision-making, distributed computation and the movement of information within the company and across the value chain.

1.3 What is the Answer?

The best way to understand how your business is running is to understand your processes.

The first step in doing that is to model your business processes.

Oracle has created and delivered business process models for those processes supported by Oracle Application Integration Architecture Releases. These business process models will enable you to see and understand how Oracle Application Integration Architecture provides application integration solutions for your business processes.

1.4 What is a Business Process?

A business process is a set of coordinated tasks and activities, involving both human and system interactions, that will lead to accomplishing a set of specific organizational goals. Characteristics of business processes include the following:

- Large, complex, long running
- Widely distributed and customized
- Dynamic
- Automated
- Both business and technical in nature
- Cross boundaries within and between businesses
- Dependent on and supportive of human intelligence and judgment
- Difficult to recognize

Modeling Approach and Methodology

This chapter discusses Oracle's approach to business process modeling and analysis, and explains the methodology and organization of process models.

This section includes the following sections:

- [Section 2.1, "Oracle's Approach to Business Process Modeling and Analysis \(BPA\)"](#)
- [Section 2.2, "Methodology and Organization"](#)

2.1 Oracle's Approach to Business Process Modeling and Analysis (BPA)

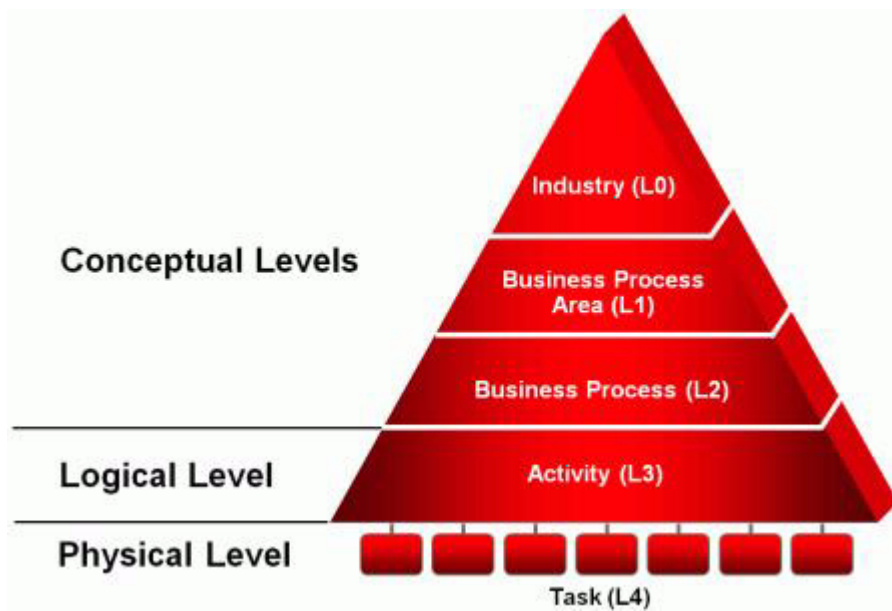
Oracle combines the business view of the business analyst with a glimpse of the technical view of the technical analyst. A standard modeling method is used with technical artifacts added to the models at the lowest level of decomposition.

2.2 Methodology and Organization

Oracle uses accepted standard modeling methods and notation and adds Oracle-specific information on the most detailed level of the models. Oracle models:

- Use horizontal, role-based swimlane workflow modeling method based on the Rummler-Brache diagramming technique
- Are BPMN-compliant at the lowest level
- Include both human and system lanes

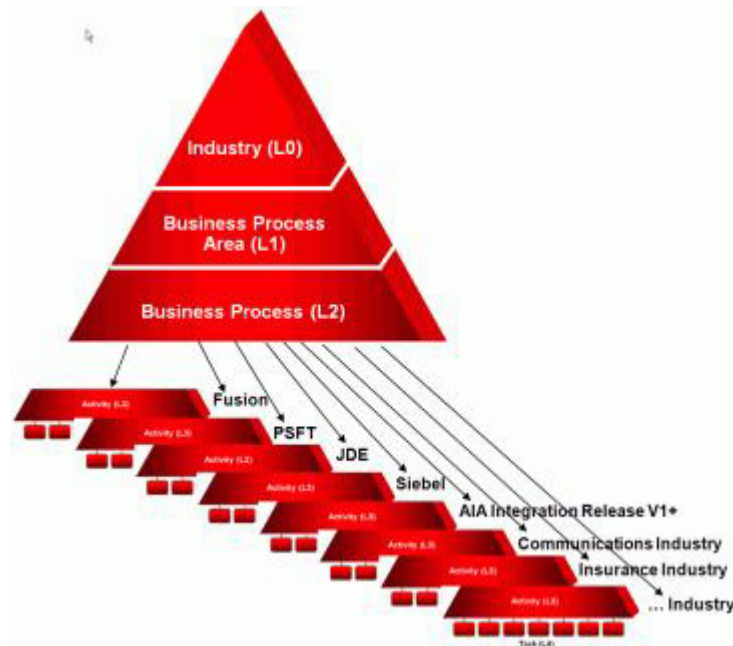
Oracle has organized its model content using four levels of hierarchical decomposition as shown in [Figure 2-1](#).

Figure 2–1 Hierarchical Organization of Model Content

- The top three levels are conceptual
- The conceptualization of SOA services can be observed on third level
- The fourth level is implementation specific
- Process integration points and AIA artifacts appear on lowest level

Oracle has created many sets of the lowest level models that correspond to particular implementation solutions, as shown in [Figure 2–2](#). AIA provides solutions that quilt together pieces of application functionality between two or more Oracle product families.

Oracle has also created industry-specific variations of their models for many of the industries that Oracle supports.

Figure 2–2 Multiple Sets of Implementation-Specific Models

Model Types

Oracle creates and delivers the following types of models:

- Reference Process Models (RPMs) - Horizontal, functionally scoped business process models that depict all of the aspects of the processes supporting a particular function (Marketing, Sales, and Order Fulfillment, for example).
- Industry Reference Process Models - Industry-specific business process models that combine industry processes with relevant horizontal processes and variations of horizontal processes.
- Composite Business Flows - End-to-end processes that are comprised of parts of several functional business processes (Order to Cash, Procure to Pay, and Design to Release, for example).

2.2.1 Authoritative and Guiding Sources for Industry Process Best Practices

The TeleManagement Forum enhanced Telecom Operations Map® (eTOM®) was used as a reference to frame the conceptual levels of the Communications business process models.

Oracle continues to determine current external best practice and governing sources and uses them as references to frame and influence our business process models, including:

- Supply Chain Council (SCOR)
- Value-Chain Group (VCG)
- Federal Enterprise Architecture Business Reference Model (FEA)
- Other external industry best practice sources

Modeling Standards and Notation

This chapter includes examples of a model for each level as well as a list of the symbols and annotation used on each level.

This chapter includes the following sections:

- [Section 3.1, "Level 0"](#)
- [Section 3.2, "Level 1"](#)
- [Section 3.3, "Level 2"](#)
- [Section 3.4, "Level 3"](#)
- [Section 3.5, "Level 4"](#)
- [Section 3.6, "Functional Allocation Diagram"](#)

3.1 Level 0

[Figure 3-1](#) is an example process model for level 0.

Figure 3-1 Sample Model: Level 0

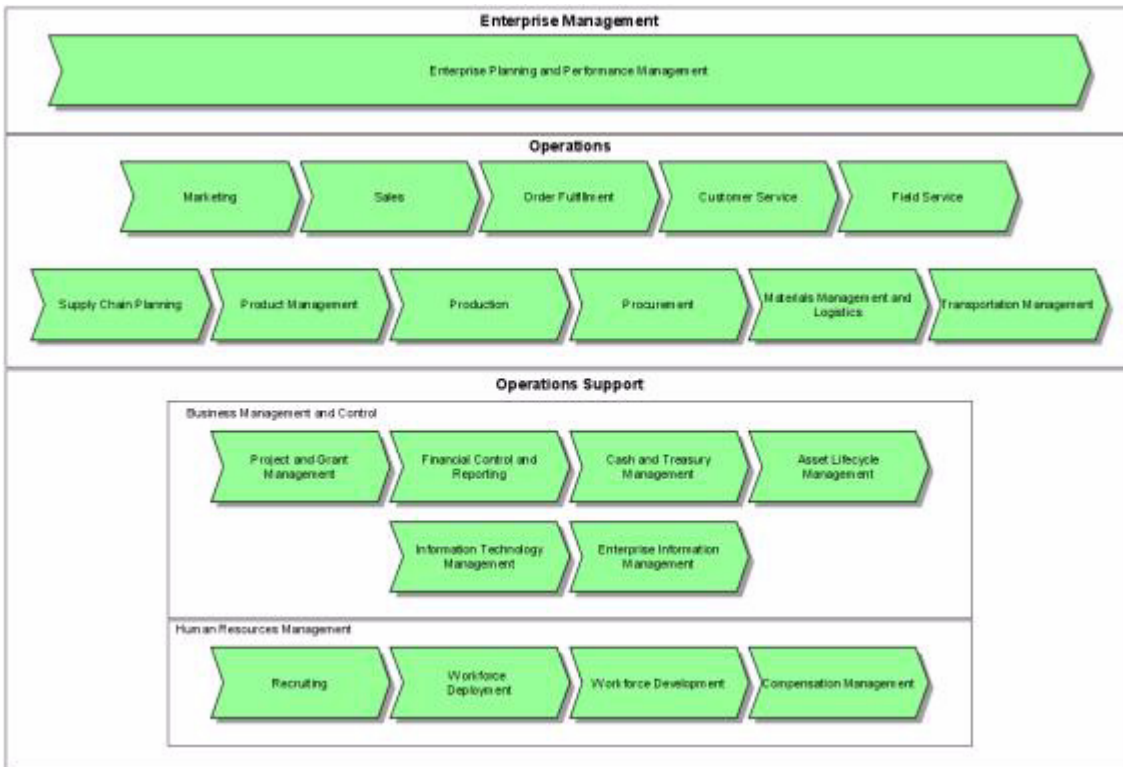
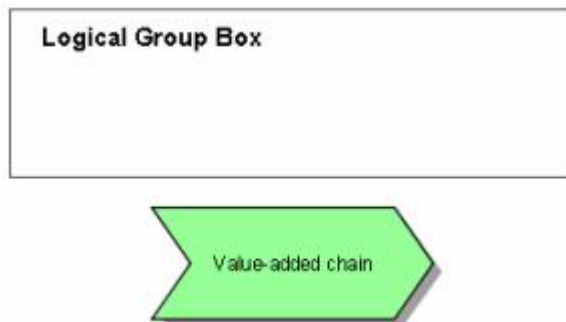


Figure 3-2 shows the symbols and annotation used on level 0.

Figure 3-2 Allowable Symbols: Level 0



3.2 Level 1

Figure 3-3 is an example process model for level 1.

Figure 3–3 Sample Model: Level 1

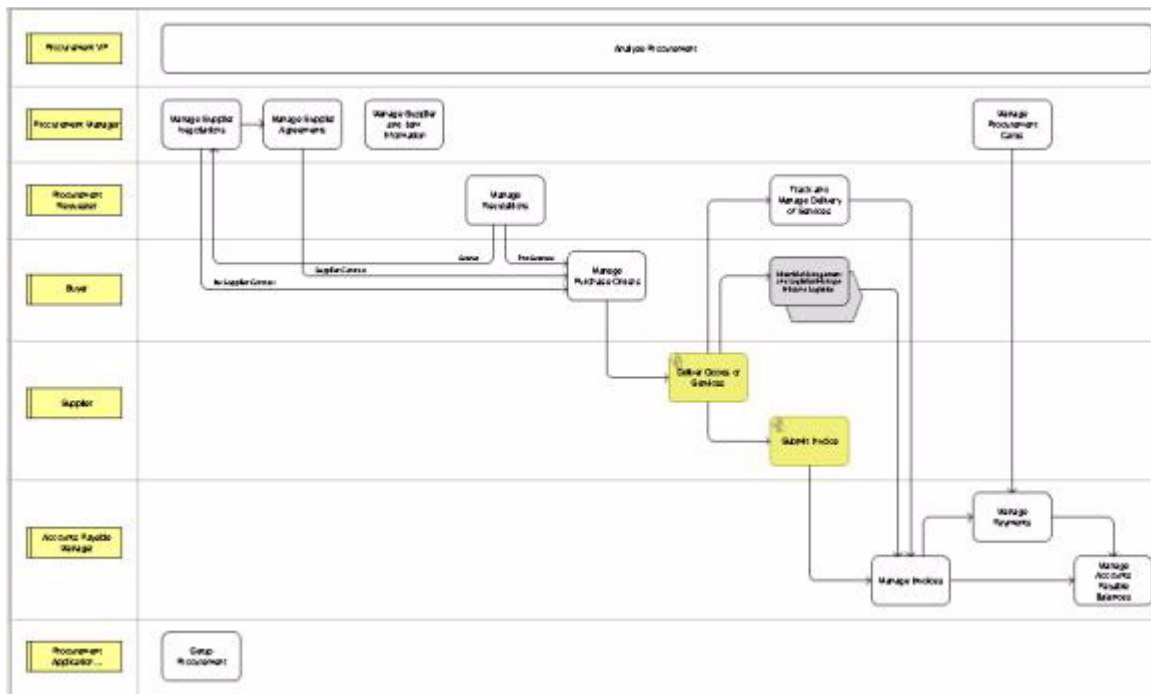
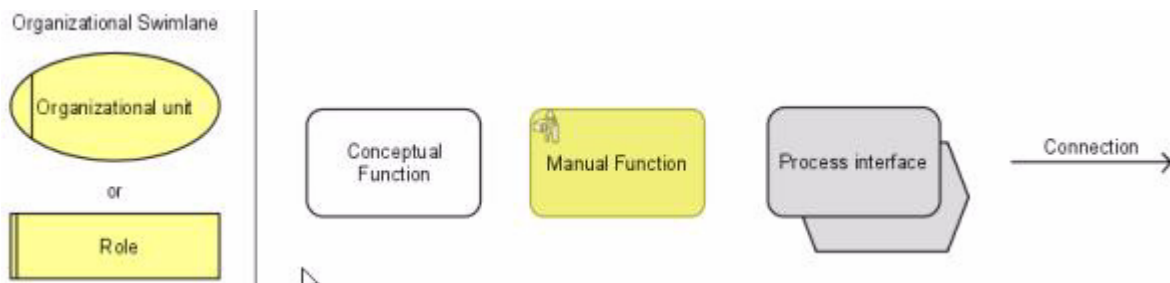


Figure 3–4 shows the symbols and annotation used on level 1.

Figure 3–4 Allowable Symbols: Level 1



3.3 Level 2

Figure 3–5 is an example process model for level 2.

Figure 3-5 Sample Model: Level 2

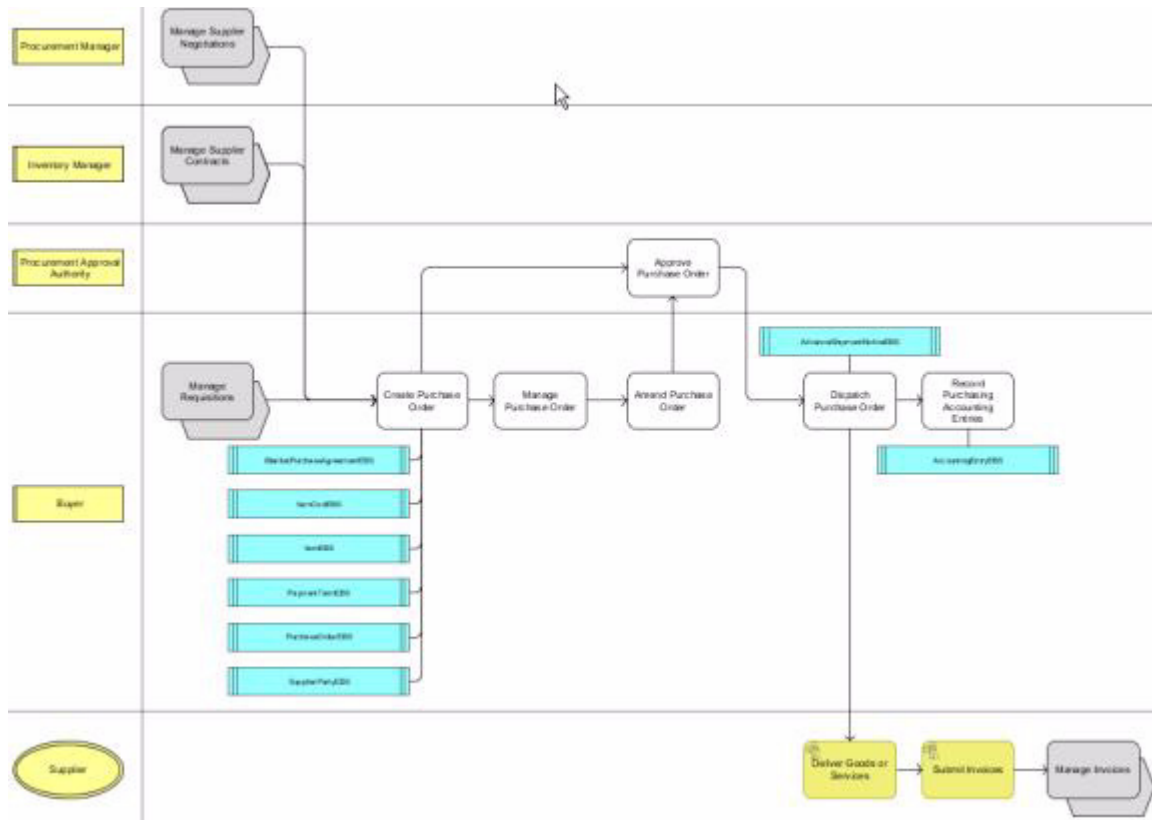
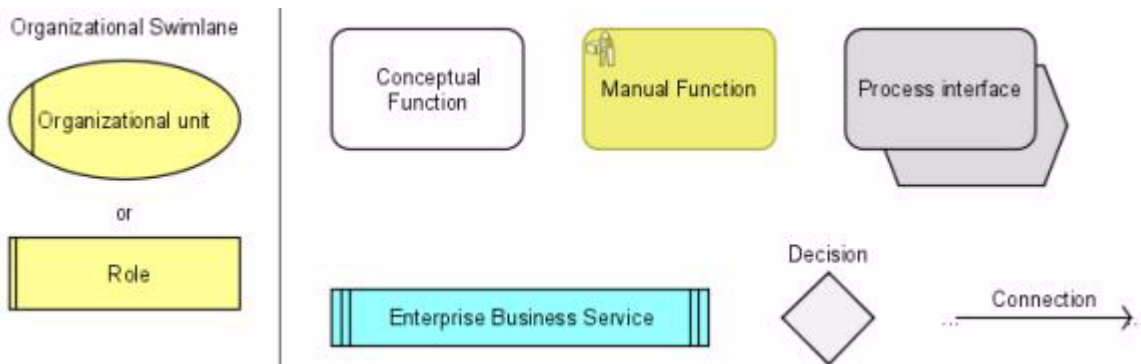


Figure 3-6 shows the symbols and annotation used on level 2.

Figure 3-6 Allowable Symbols: Level 2



3.4 Level 3

Figure 3-7 and Figure 3-8 show an example process model for level 3.

Figure 3-7 Sample Model (1 of 2): Level 3

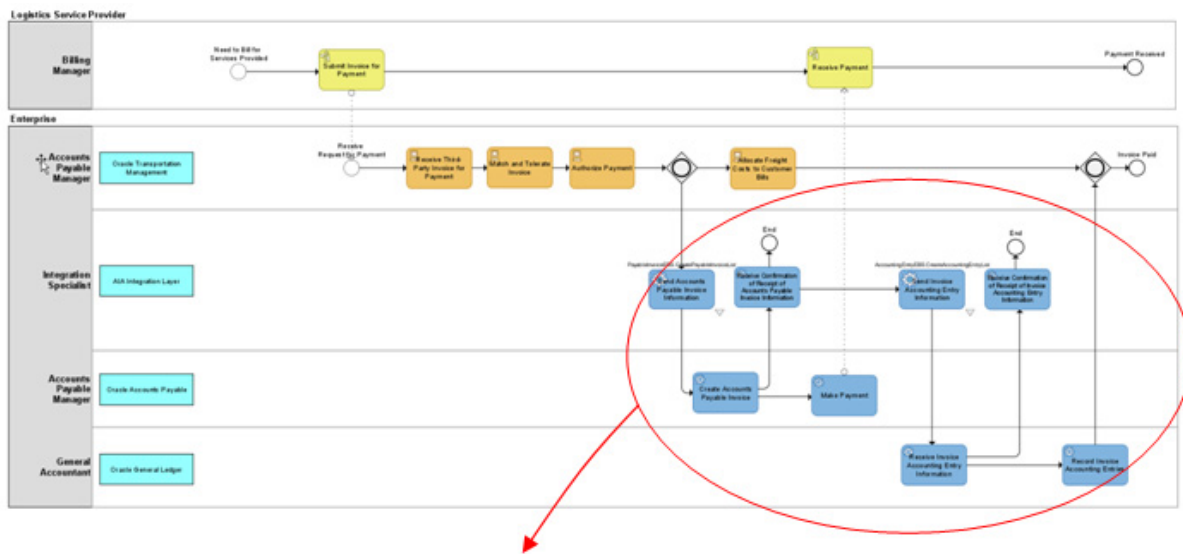


Figure 3-8 Sample Model (2 of 2): Level 3

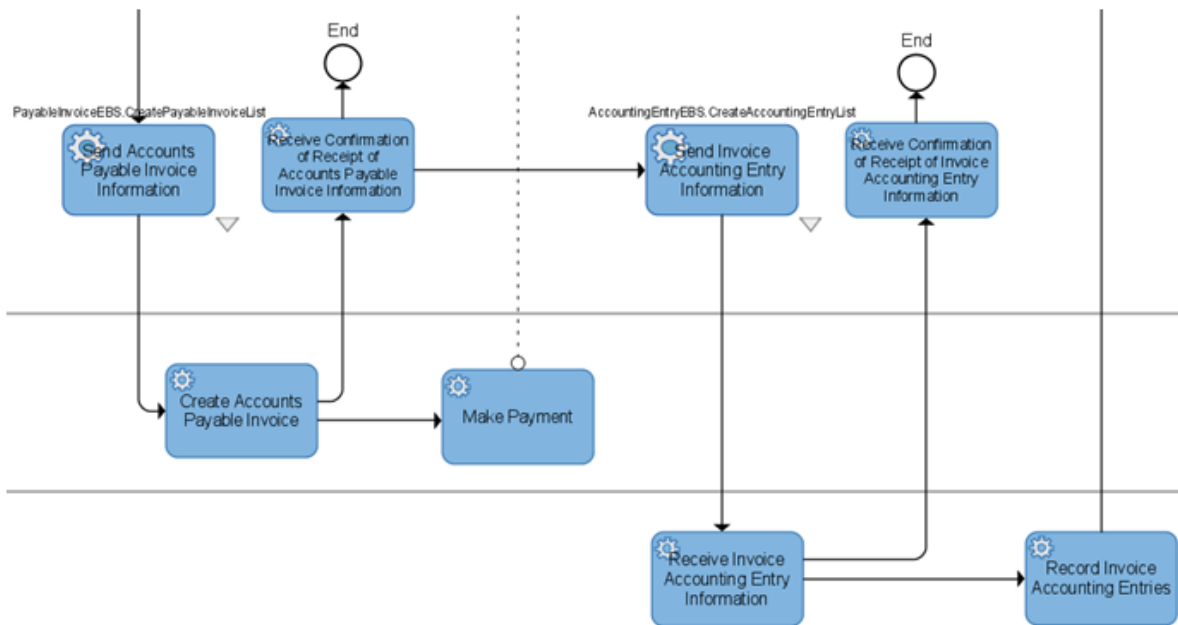
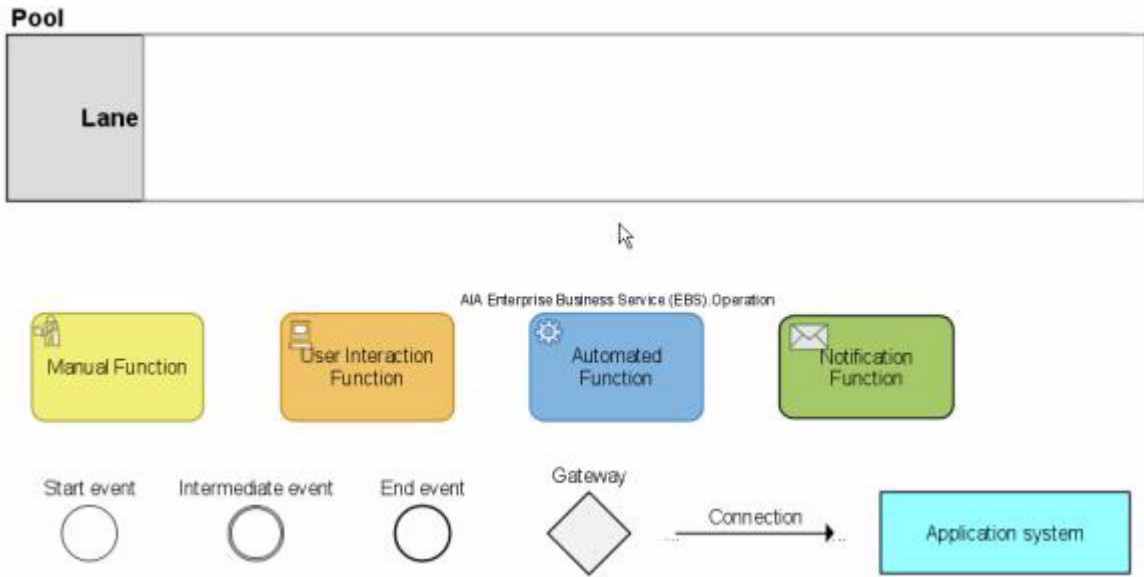


Figure 3-9 shows the symbols and annotation used on level 3.

Figure 3–9 Allowable Symbols: Level 3



3.5 Level 4

Level 4 is not a model level. It is the tasks that appear on the models at level 3; level 4 is the leaves at the bottom of the branch of the tree.

3.6 Functional Allocation Diagram

Like level 4, the Functional Allocation Diagram (FAD) is not a model level. The FAD diagram is used to depict the Enterprise Business Services and operations that are used by the Application Integration Architecture for a particular integration. Figure 3–10 is a sample FAD diagram.

Figure 3–10 Sample FAD Diagram

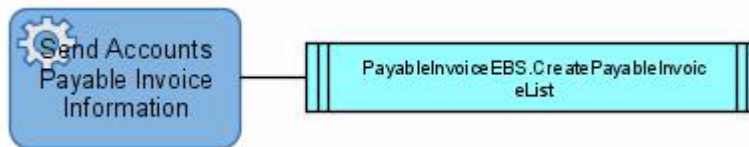
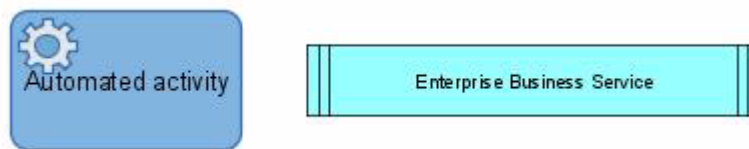


Figure 3–11 shows the allowable symbols.

Figure 3–11 Allowable Symbols: FAD

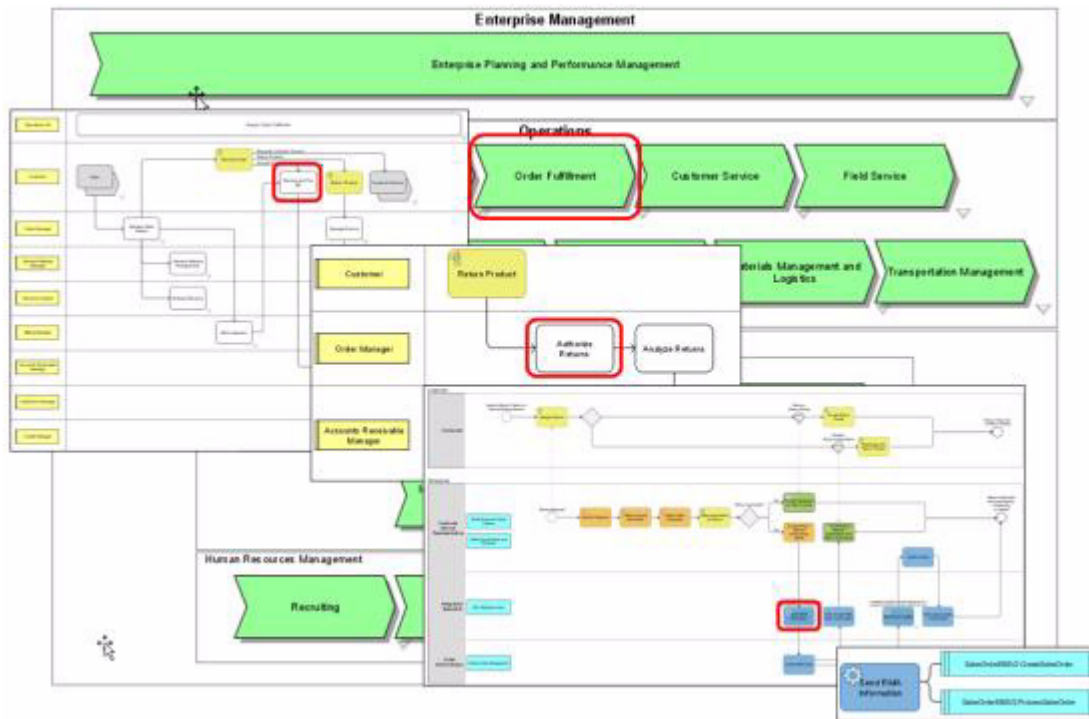


Functional and Composite Business Process Views

Our reference process models depict functionally scoped business processes.

Figure 3–12 depicts a functional business process view drilldown for all four levels (Order Fulfillment) as well as the FAD.

Figure 3–12 Functional Business Process View Drill-down, All Four Levels (Order Fulfillment) and the FAD



Our composite business flows depict end-to-end processes that span portions of several functional business processes (Order to Cash, Procure to Pay, and Design to Release, for example).

Figure 3–13 depicts the composite business process view drill-down at level 0 (Order to Cash).

Figure 3–13 Composite Business Process View Drill-Down, Level 0 (Order to Cash)

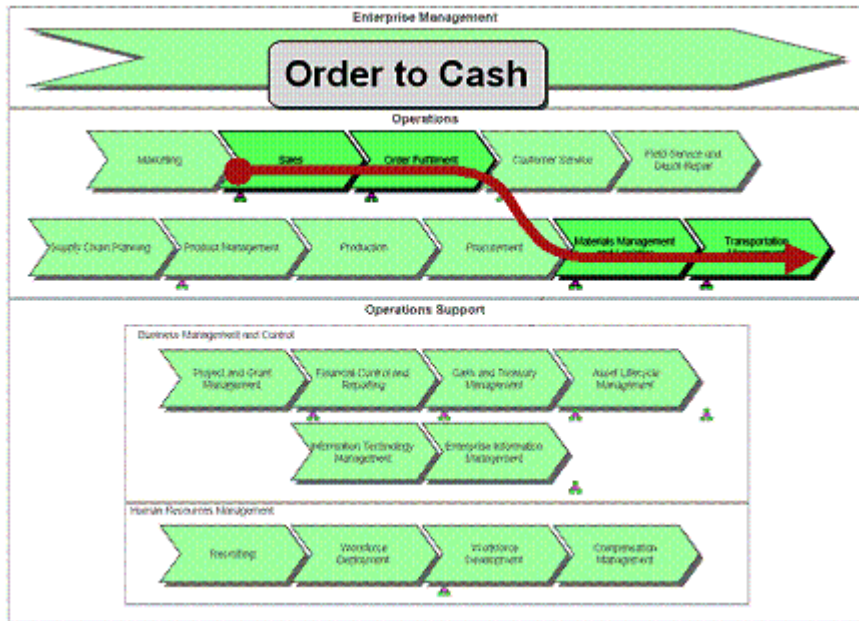
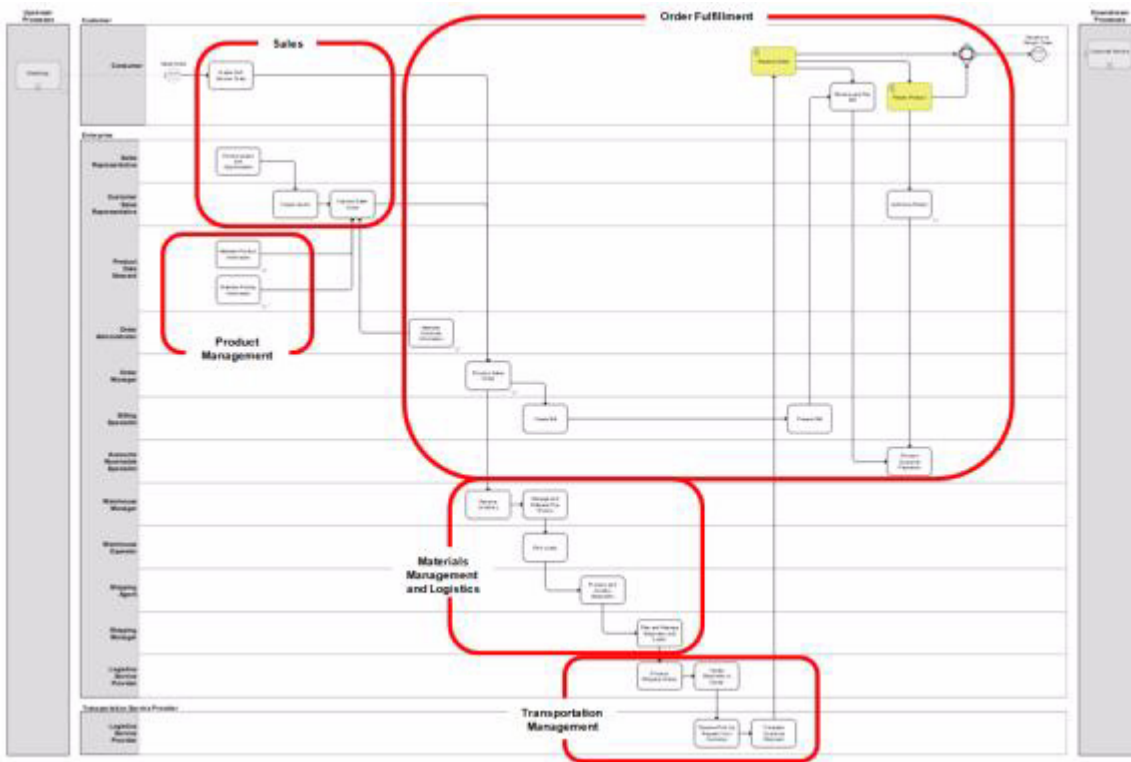


Figure 3–14 depicts the composite business process view drill-down at level 1 (Order to Cash).

Figure 3–14 Composite Business Process View Drill-Down, Level 1 (Order to Cash)



Modeling Tool and Viewer

This chapter provides an overview of the modeling tool and viewer, and describes the modeling tool and viewer user experience.

This chapter includes the following sections:

- [Section 4.1, "Overview of the Modeling Tool and Viewer"](#)
- [Section 4.2, "Describing the Modeling Tool and Viewer User Experience"](#)

4.1 Overview of the Modeling Tool and Viewer

The modeling tool is our own Oracle Business Process Analysis (OBPA) Suite. The components in the OBPA Suite include:

- **Business Process Architect**
Standards-based tool for process modeling. Uses various standards-based notations and templates such as BPMN, EPC, and so on.
- **Business Process Repository Server**
Server component for sharing the process repository across multiple users in a collaborative environment
- **Business Process Simulator**
Tool for simulating the process models based on a set of discrete events to do "what if" analysis
- **Business Process Publisher**
Publishes process models to a large audience outside of the core team designing the process models
- **Oracle Extensions for SOA**
Allows bi-directional integration with Oracle SOA Suite

The Business Process Architect and the Business Process Repository Server components are used to create the models. The Business Process Publisher component is then used to publish the models in HTML format. Oracle provides the Business Process Publisher along with Oracle Application Integration Architecture release media pack for you to be able to view the published set of models. Once installed and implemented, you can allow business and technical analysts in your entire enterprise to view the models with a web browser. The published models include hyperlinks to entries in the Oracle Enterprise Repository (OER) where technical details are described for the Oracle Application Integration Architecture Release integration artifacts.

4.2 Describing the Modeling Tool and Viewer User Experience

Following is a walk through of the published model experience.

Logon to the Business Process Publisher:

Your implementation specialist will provide a URL to the logon page, as shown in [Figure 4-1](#).

Figure 4-1 Business Process Publisher Logon Page



Enter the following information

User name: AIA

Password: Welcome1

Choose a language:

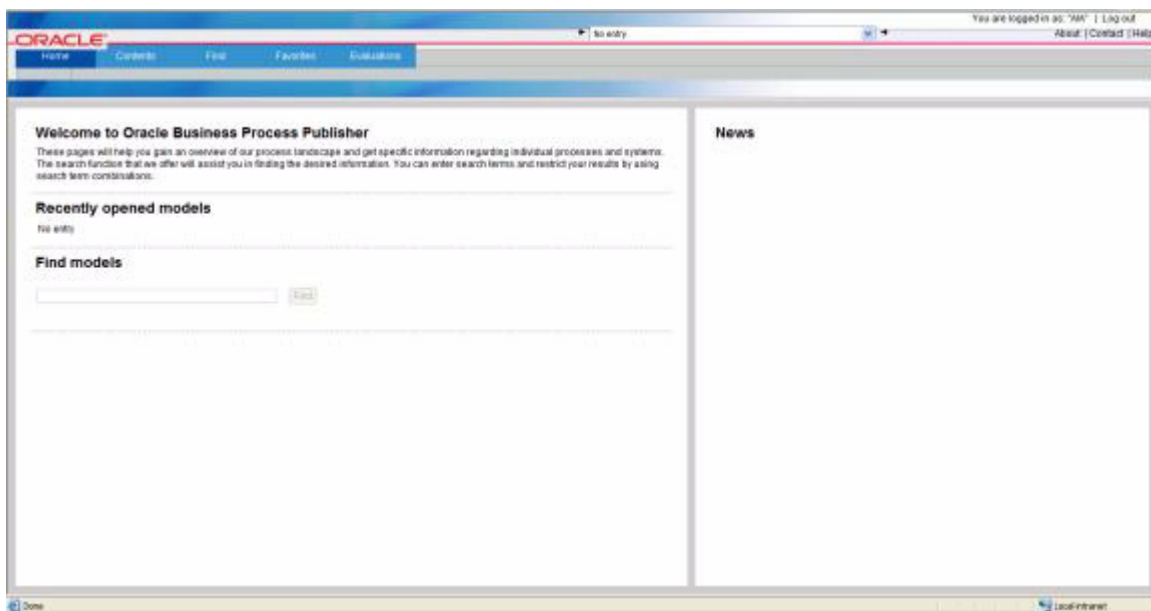
Select the required language from the dropdown list, as shown in [Figure 4-2](#)

Figure 4–2 Business Process Publisher Language Selection

Note: Only available in English at this time.

Access Business Process Publisher homepage:

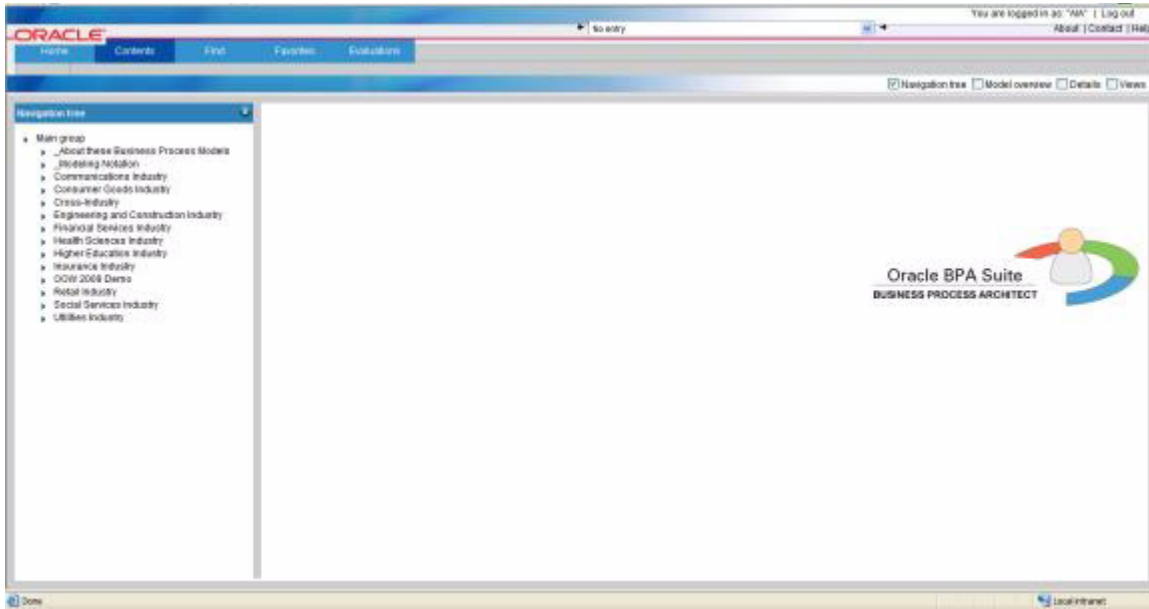
The homepage is displayed, as shown in [Figure 4–3](#), after you select your language and click OK.

Figure 4–3 Business Process Publisher Homepage

Choose Contents module:

Choose the Contents tab, which is located at the top of your homepage, as shown in Figure 4-4.

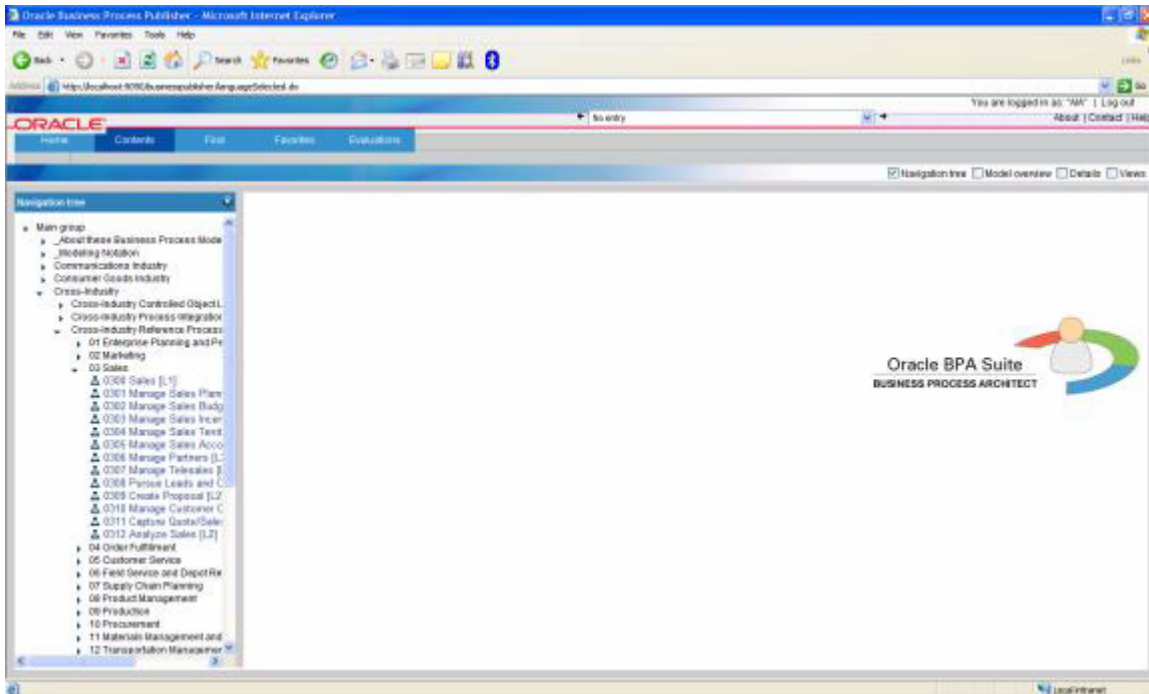
Figure 4-4 Contents Module Selection



Expand groups in Navigation tree:

Click the (+) icon in the Navigation Tree section of the page, as shown in Figure 4-5.

Figure 4-5 Expanded Groups in the Navigation Tree



Navigate to desired model and click on it:

Model is displayed in model pane.

View model attributes in Model Information pane.

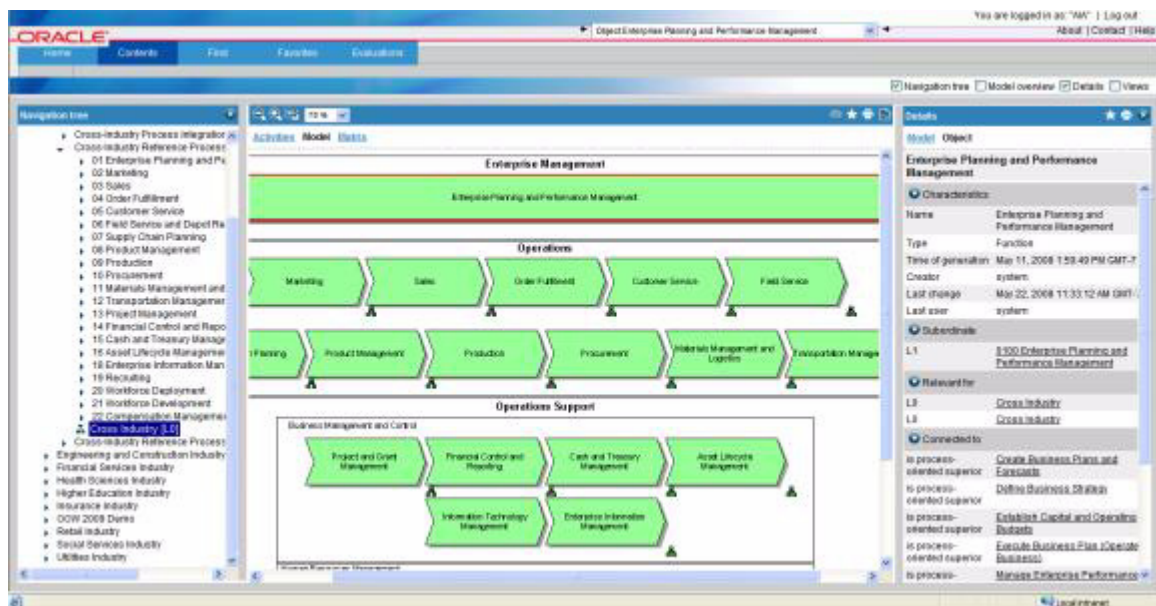
Use view controls, shown in [Figure 4-6](#), to zoom in and zoom out.

Figure 4-6 View Controls



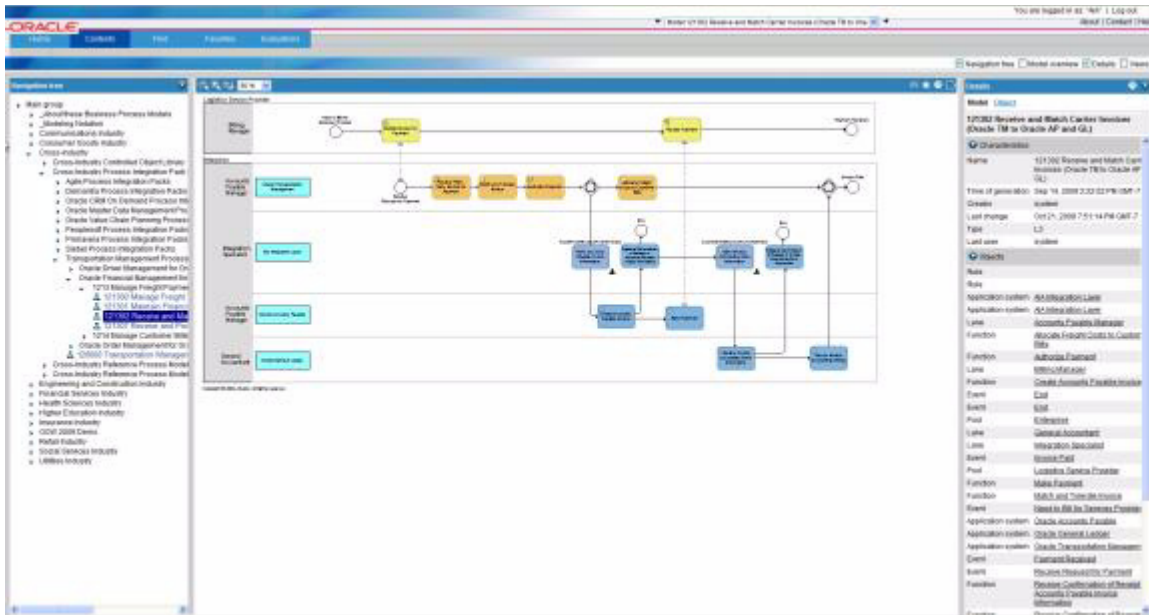
Navigate to a child model by clicking on the 'assignment icon' on the model, or by navigating to a model in the navigation pane, as shown in [Figure 4-7](#).

Figure 4-7 Child Model Navigation

**Navigate to Level 3 model:**

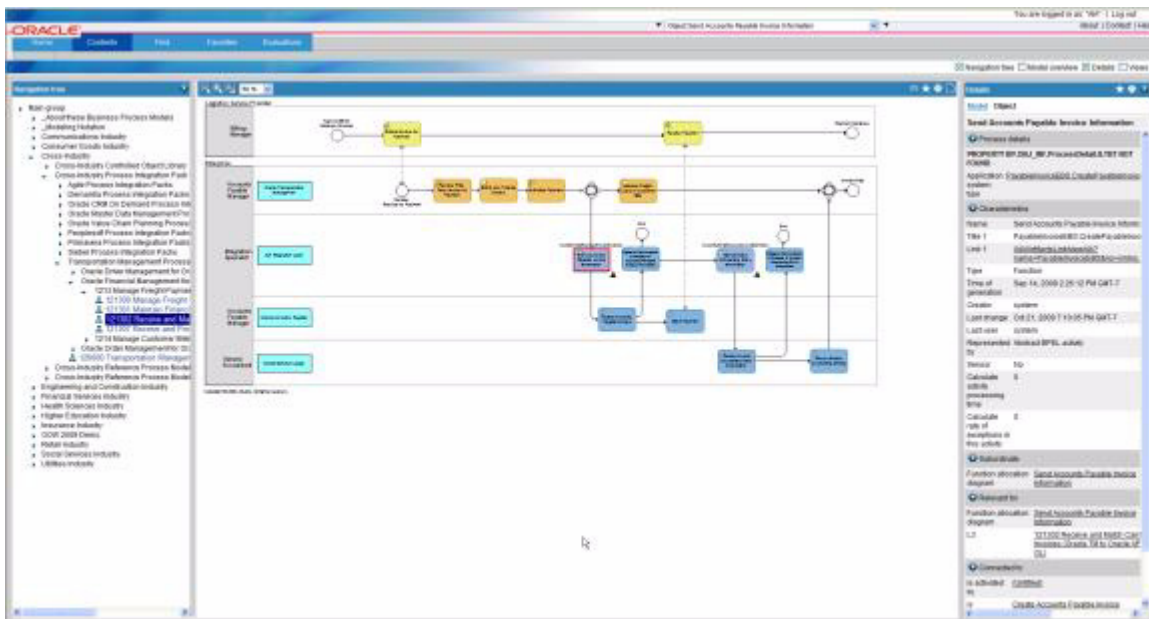
[Figure 4-8](#) shows how to use the navigation pane to navigate to a level 3 model.

Figure 4–8 Level 3 Model

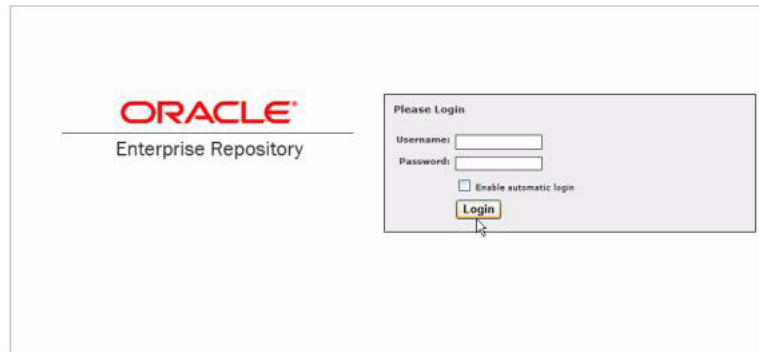


View object attributes in Object Characteristics pane:
Figure 4–9 shows the Object Characteristics pane.

Figure 4–9 Object Characteristics Pane



Access Oracle Enterprise Repository for AIA artifact entry.
Click on AIA artifact link to open the Oracle Enterprise Repository (OER) Login page, as shown in Figure 4–10.

Figure 4–10 Oracle Enterprise Repository Login Page

Your implementation specialist will provide a User Name and Password for your OER implemented instance.

OER is delivered with Oracle AIA solutions. Our models include references to the AIA integration artifact metadata defined in Oracle Enterprise Repository as well as URL links to those OER entries.

Figure 4–11 is a sample of an AIA Enterprise Business Service artifact entry in Oracle Enterprise Repository.

Figure 4–11 AIA Enterprise Business Service Artifact Entry in Oracle Enterprise Repository

Operation	Description	REP
CreateCustomerParty	This operation is used to create a CustomerParty EBO.	REQUEST_ONLY
CreateCustomerPartyList	This operation is used to create a multiple CustomerParty EBOs	REQUEST_ONLY
QueryCustomerParty	This operation is used to query a CustomerParty EBO	SYNC_REQ_RESPONSE
QueryCustomerPartyList	This operation is used to query multiple CustomerParty EBOs	SYNC_REQ_RESPONSE
UpdateCustomerParty	This operation is used to update a CustomerParty EBO	REQUEST_ONLY
UpdateCustomerPartyList	This operation is used to update multiple CustomerParty EBOs	REQUEST_ONLY
UpdateCustomerPartyAccount	This operation is used to update a CustomerParty EBO	REQUEST_ONLY
DeleteCustomerParty	This operation is used to delete a CustomerParty EBO	REQUEST_ONLY
DeleteCustomerPartyList	This operation is used to delete multiple CustomerParty EBOs	REQUEST_ONLY
SyncCustomerPartyList	This operation is used to sync multiple CustomerParty EBOs	REQUEST_ONLY
SyncCustomerPartyAccountList	This operation is used to sync multiple CustomerPartyAccounts	REQUEST_ONLY
ProcessCustomerPartyList	This operation is used to process multiple CustomerParty EBOs	REQUEST_ONLY
ProcessCreditEligibilityVerification	This operation is used to process CreditEligibilityVerification	REQUEST_ONLY
CreateCustomerPartyResponse	This callback operation will be used to provide the Create Customer Party Response	ASYNC_REQ_RESPONSE
CreateCustomerPartyListResponse	This callback operation will be used to provide the Create Customer Party Response	ASYNC_REQ_RESPONSE
UpdateCustomerPartyResponse	This callback operation will be used to provide the Update Customer Party Response	ASYNC_REQ_RESPONSE
UpdateCustomerPartyListResponse	This callback operation will be used to provide the Update Customer Party List Response	ASYNC_REQ_RESPONSE
UpdateCustomerPartyAccountResponse	This callback operation will be used to provide the Update Customer Party Account Response	ASYNC_REQ_RESPONSE
DeleteCustomerPartyResponse	This callback operation will be used to provide the Delete Customer Party Response	ASYNC_REQ_RESPONSE

Index

A

artifact entry in OER, 4-7

B

best practices

 guiding sources, 2-3

BPA

 approach to analysis, 2-1

BPM

 approach to modeling, 2-1

 challenges, 1-1

 definition, 1-2

 functional allocation diagram, 3-6

 level 0, 3-1

 level 1, 3-2

 level 2, 3-3

 level 3, 3-4

 level 4, 3-6

 modeling tool user experience, 4-2

 notation, 3-1

 solutions, 1-2

 standards, 3-1

 tool overview, 4-1

 understanding, 1-1

 viewer overview, 4-1

BPM organization, 2-1

BPM viewer user experience, 4-2

business process

 characteristics, 1-2

 definition, 1-2

Business Process Analysis

See BPA

Business Process Architect, 4-1

Business Process Management

See BPM

Business Process Publisher, 4-1

 logon, 4-2

Business Process Publisher homepage, 4-3

Business Process Repository Server, 4-1

Business Process Simulator, 4-1

C

composite business process view drill-down at level

1, 3-8

Contents module, 4-4

coordinating business processes, 1-1

L

Language Selection, 4-3

level 0, 3-1

level 1, 3-2

level 2, 3-3

level 4, 3-6

M

model content, 2-1

model types

 Composite Business Flows, 2-3

 Industry Reference Process Models, 2-3

 Reference Process Models (RPMs), 2-3

modeling method, 2-1

N

Navigation tree, 4-4

O

Object Characteristics, 4-6

OBPA

 overview, 4-1

 user experience, 4-2

OER

 integrating with, 4-7

Oracle Business Process Analysis

See OBPA

Oracle Business Process Analysis (OBPA) Suite, 4-1

Oracle Enterprise Repository

See OER

Oracle Extensions for SOA, 4-1

R

Rummler-Brache diagramming technique, 2-1

S

swimlane workflow modeling method, 2-1

symbols and annotation

level 0, 3-2

level 1, 3-3

level 2, 3-4

level 3, 3-4, 3-5

T

Telecom Operations Map, 2-3

TeleManagement Forum, 2-3

V

View Controls, 4-5