

# **Oracle® Complex Event Processing**

EPL Language Reference

11g Release 1 (11.1.1.4.0)

**E14304-02**

January 2011

Oracle Complex Event Processing EPL Language Reference, 11g Release 1 (11.1.1.4.0)

E14304-02

Copyright © 2007, 2011, Oracle and/or its affiliates. All rights reserved.

Primary Author: Peter Purich

This software and related documentation are provided under a license agreement containing restrictions on use and disclosure and are protected by intellectual property laws. Except as expressly permitted in your license agreement or allowed by law, you may not use, copy, reproduce, translate, broadcast, modify, license, transmit, distribute, exhibit, perform, publish, or display any part, in any form, or by any means. Reverse engineering, disassembly, or decompilation of this software, unless required by law for interoperability, is prohibited.

The information contained herein is subject to change without notice and is not warranted to be error-free. If you find any errors, please report them to us in writing.

If this software or related documentation is delivered to the U.S. Government or anyone licensing it on behalf of the U.S. Government, the following notice is applicable:

U.S. GOVERNMENT RIGHTS Programs, software, databases, and related documentation and technical data delivered to U.S. Government customers are "commercial computer software" or "commercial technical data" pursuant to the applicable Federal Acquisition Regulation and agency-specific supplemental regulations. As such, the use, duplication, disclosure, modification, and adaptation shall be subject to the restrictions and license terms set forth in the applicable Government contract, and, to the extent applicable by the terms of the Government contract, the additional rights set forth in FAR 52.227-19, Commercial Computer Software License (December 2007). Oracle USA, Inc., 500 Oracle Parkway, Redwood City, CA 94065.

This software is developed for general use in a variety of information management applications. It is not developed or intended for use in any inherently dangerous applications, including applications which may create a risk of personal injury. If you use this software in dangerous applications, then you shall be responsible to take all appropriate fail-safe, backup, redundancy, and other measures to ensure the safe use of this software. Oracle Corporation and its affiliates disclaim any liability for any damages caused by use of this software in dangerous applications.

Oracle is a registered trademark of Oracle Corporation and/or its affiliates. Other names may be trademarks of their respective owners.

This software and documentation may provide access to or information on content, products, and services from third parties. Oracle Corporation and its affiliates are not responsible for and expressly disclaim all warranties of any kind with respect to third-party content, products, and services. Oracle Corporation and its affiliates will not be responsible for any loss, costs, or damages incurred due to your access to or use of third-party content, products, or services.

---

---

# Contents

<b>Preface</b> .....	xi
Audience .....	xi
Documentation Accessibility .....	xi
Related Documents .....	xii
Conventions .....	xii
<b>1 Overview of the Event Processing Language (EPL)</b>	
1.1 Overview of the EPL Language .....	1-1
1.2 Event Representation .....	1-2
1.2.1 Event Objects .....	1-2
1.2.2 Plain Old Java Object Events .....	1-3
1.2.3 Map Events .....	1-3
1.2.4 Event Properties .....	1-3
1.2.5 Dynamic Event Properties .....	1-4
1.2.6 Handling Other Event Properties Using a User-Defined Function .....	1-6
1.2.7 Event Sinks .....	1-7
1.3 Processing Model .....	1-8
1.3.1 Event Streams .....	1-8
1.3.2 Sliding Windows .....	1-9
1.3.2.1 Row-Based Sliding Windows .....	1-9
1.3.2.2 Time-Based Sliding Windows .....	1-10
1.3.3 Batched Windows .....	1-11
1.3.3.1 Time-Based Batched Windows .....	1-11
1.3.3.2 Row-Based Batched Windows .....	1-12
1.3.4 Subqueries and WHERE Clauses .....	1-13
1.3.5 Aggregation .....	1-14
1.4 Use Cases .....	1-15
1.4.1 Computing Rates per Feed .....	1-15
1.4.2 Computing Highest Priced Stocks .....	1-15
1.4.3 Segmenting Location Data .....	1-15
1.4.4 Detecting Rapid Fall-off .....	1-16
1.4.5 Finding Network Anomalies .....	1-16
1.4.6 Detecting Absence of Event .....	1-16
1.4.7 Summarizing Terminal Activity Data .....	1-17
1.4.8 Reading Sensor Data .....	1-17

1.4.9	Combining Transaction Events.....	1-17
1.4.10	Monitoring Real-time Performance .....	1-17
1.4.11	Finding Dropped Transaction Events.....	1-18

## 2 EPL Reference: Clauses

2.1	Overview of the Clauses You Can Use in an EPL Statement .....	2-1
2.2	SELECT.....	2-1
2.2.1	Choosing Specific Event Properties .....	2-2
2.2.2	Using Expressions.....	2-2
2.2.3	Aliasing Event Properties .....	2-2
2.2.4	Choosing All Event Properties .....	2-2
2.2.5	Selecting New and Old Events With ISTREAM and RSTREAM Keywords .....	2-3
2.3	FROM.....	2-3
2.3.1	Inner Joins .....	2-5
2.3.2	Outer Joins .....	2-5
2.3.3	Subquery Expressions .....	2-6
2.3.4	Parameterized SQL Queries .....	2-6
2.4	RETAIN .....	2-8
2.4.1	Keeping All Events .....	2-8
2.4.2	Specifying Window Size .....	2-8
2.4.3	Specifying Batched Versus Sliding Windows .....	2-9
2.4.4	Specifying Time Interval.....	2-9
2.4.4.1	BASED ON Clause .....	2-10
2.4.5	Specifying Property Name .....	2-10
2.4.6	Using PARTION BY Clause to Partition Window .....	2-10
2.4.7	Using WITH Clause to Keep Largest/Smallest/Unique Values.....	2-11
2.5	MATCHING .....	2-11
2.5.1	FOLLOWED BY Operator .....	2-12
2.5.2	AND Operator.....	2-12
2.5.3	OR Operator .....	2-13
2.5.4	NOT Operator .....	2-13
2.5.5	EVERY Operator .....	2-13
2.5.6	WITHIN Operator .....	2-14
2.5.7	Event Structure for Matched Pattern .....	2-15
2.6	WHERE.....	2-15
2.7	GROUP BY .....	2-15
2.8	HAVING .....	2-17
2.8.1	Interaction With MATCHING, WHERE and GROUP BY Clauses .....	2-17
2.9	ORDER BY .....	2-18
2.10	OUTPUT.....	2-18
2.10.1	Interaction With GROUP BY and HAVING Clauses .....	2-19
2.11	INSERT INTO.....	2-20
2.12	Simple and Correlated Subqueries.....	2-21
2.13	Parameterized Queries.....	2-22
2.13.1	General Usage .....	2-23
2.13.2	Using a Parameterized EPL Statement in the Processor Configuration File .....	2-23
2.13.3	Programmatically Using a Prepared EPL Statement.....	2-24

### 3 EPL Reference: Operators

3.1	Overview of EPL Operators .....	3-1
3.2	Arithmetic Operators .....	3-1
3.3	Logical and Comparison Operators .....	3-1
3.4	Concatenation Operators .....	3-2
3.5	Binary Operators .....	3-2
3.6	Array Definition Operator .....	3-2
3.7	List and Range Operators .....	3-3
3.7.1	IN Operator .....	3-3
3.7.2	BETWEEN Operator .....	3-3
3.8	String Operators .....	3-4
3.8.1	LIKE Operator .....	3-4
3.8.2	REGEXP Operator .....	3-5
3.9	Temporal Operators .....	3-5
3.9.1	FOLLOWED BY Operator .....	3-5
3.9.2	WITHIN Operator .....	3-5
3.9.3	EVERY Operator .....	3-6

### 4 EPL Reference: Functions

4.1	Single-row Functions .....	4-1
4.1.1	The MIN and MAX Functions .....	4-2
4.1.2	The COALESCE Function .....	4-3
4.1.3	The CASE Control Flow Function .....	4-3
4.1.4	The PREV Function .....	4-3
4.1.4.1	Previous Event Per Group .....	4-4
4.1.4.2	Restrictions .....	4-4
4.1.5	The PRIOR Function .....	4-4
4.1.5.1	Comparison to the PREV Function .....	4-5
4.1.6	The INSTANCEOF Function .....	4-5
4.1.7	The CAST Function .....	4-6
4.1.8	The EXISTS Function .....	4-6
4.2	Aggregate functions .....	4-7
4.3	User-Defined functions .....	4-8

### 5 Programmatic Interface to EPL

5.1	Java Programming Interfaces .....	5-1
-----	-----------------------------------	-----

### Index



## List of Examples

1-1	Enum Datatype ProcessStatus .....	1-6
1-2	Event Using Enum Datatype ProcessStatus.....	1-6
1-3	User-Defined Function to Evaluate Enum Datatype .....	1-6
1-4	Registering the User-Defined Function in Application Assembly File.....	1-7
1-5	Using the User-Defined Function to Evaluate Enum Datatype in an EPL Query .....	1-7

## List of Figures

1-1	Example Event Stream .....	1-9
1-2	Example Row-Based Sliding Window .....	1-10
1-3	Example Time-Based Sliding Window .....	1-11
1-4	Example Time-Based Batched Window .....	1-12
1-5	Example Subquery and WHERE Clause .....	1-13
1-6	Events Arriving in a Row-Based Sliding Window.....	1-14



## List of Tables

1-1	Event Representation.....	1-2
1-2	Event Properties .....	1-3
1-3	Syntax of Dynamic Properties.....	1-5
2-1	Example EVERY Operators .....	2-13
3-1	Arithmetic Operators .....	3-1
3-2	Logical and Comparison Operators .....	3-2
3-3	Concatenation Operators .....	3-2
3-4	Binary Operators .....	3-2
4-1	Built-In Single-Row Functions .....	4-1
4-2	Aggregate Functions.....	4-7



---

---

# Preface

This reference contains a complete description of the Oracle Event Processing Language (Oracle EPL), a query language based on SQL with added constructs that support streaming data. Using Oracle EPL, you can express queries on data streams to perform complex event processing (CEP) using Oracle CEP.

---

---

**Note:** Oracle EPL is superseded by Oracle Continuous Query Language (Oracle CQL). For more information, see the *Oracle Complex Event Processing CQL Language Reference*.

---

---

Oracle CEP (formally known as the WebLogic Event Server) is a Java server for the development of high-performance event driven applications. It is a lightweight Java application container based on Equinox OSGi, with shared services, including the Oracle CEP Service Engine, which provides a rich, declarative environment based on Oracle Continuous Query Language (Oracle CQL) - a query language based on SQL with added constructs that support streaming data - to improve the efficiency and effectiveness of managing business operations. Oracle CEP supports ultra-high throughput and microsecond latency using JRockit Real Time and provides Oracle CEP Visualizer and Oracle CEP IDE for Eclipse developer tooling for a complete real time end-to-end Java Event-Driven Architecture (EDA) development platform.

## Audience

This document is intended for all users of Oracle EPL.

## Documentation Accessibility

Our goal is to make Oracle products, services, and supporting documentation accessible to all users, including users that are disabled. To that end, our documentation includes features that make information available to users of assistive technology. This documentation is available in HTML format, and contains markup to facilitate access by the disabled community. Accessibility standards will continue to evolve over time, and Oracle is actively engaged with other market-leading technology vendors to address technical obstacles so that our documentation can be accessible to all of our customers. For more information, visit the Oracle Accessibility Program Web site at <http://www.oracle.com/accessibility/>.

### Accessibility of Code Examples in Documentation

Screen readers may not always correctly read the code examples in this document. The conventions for writing code require that closing braces should appear on an

otherwise empty line; however, some screen readers may not always read a line of text that consists solely of a bracket or brace.

### Accessibility of Links to External Web Sites in Documentation

This documentation may contain links to Web sites of other companies or organizations that Oracle does not own or control. Oracle neither evaluates nor makes any representations regarding the accessibility of these Web sites.

### Access to Oracle Support

Oracle customers have access to electronic support through My Oracle Support. For information, visit <http://www.oracle.com/support/contact.html> or visit <http://www.oracle.com/accessibility/support.html> if you are hearing impaired.

## Related Documents

For more information, see the following:

- *Oracle Complex Event Processing Getting Started*
- *Oracle Complex Event Processing Administrator's Guide*
- *Oracle Complex Event Processing Developer's Guide for Eclipse*
- *Oracle Complex Event Processing Visualizer User's Guide*
- *Oracle Fusion Middleware Java API Reference for Oracle Complex Event Processing*
- *Oracle Complex Event Processing CQL Language Reference*
- *Oracle Database SQL Language Reference* at [http://download.oracle.com/docs/cd/B28359\\_01/server.111/b28286/toc.htm](http://download.oracle.com/docs/cd/B28359_01/server.111/b28286/toc.htm)
- SQL99 Specifications (ISO/IEC 9075-1:1999, ISO/IEC 9075-2:1999, ISO/IEC 9075-3:1999, and ISO/IEC 9075-4:1999)
- Oracle CEP Forum: <http://forums.oracle.com/forums/forum.jspa?forumID=820>
- *Oracle CEP Samples*: <http://www.oracle.com/technologies/soa/complex-event-processing.html>
- Oracle Event Driven Architecture Suite sample code: [http://www.oracle.com/technology/sample\\_code/products/event-driven-architecture](http://www.oracle.com/technology/sample_code/products/event-driven-architecture)

## Conventions

The following text conventions are used in this document:

Convention	Meaning
<b>boldface</b>	Boldface type indicates graphical user interface elements associated with an action, or terms defined in text or the glossary.
<i>italic</i>	Italic type indicates book titles, emphasis, or placeholder variables for which you supply particular values.

---

<b>Convention</b>	<b>Meaning</b>
<code>monospace</code>	Monospace type indicates commands within a paragraph, URLs, code in examples, text that appears on the screen, or text that you enter.

---



---

---

# Overview of the Event Processing Language (EPL)

This section contains information on the following subjects:

- [Section 1.1, "Overview of the EPL Language"](#)
- [Section 1.2, "Event Representation"](#)
- [Section 1.3, "Processing Model"](#)
- [Section 1.4, "Use Cases"](#)

## 1.1 Overview of the EPL Language

The Complex Event Processor module can be broken down into the following functional components: event representation, processing model, programmatic interface, and language specification.

Events are represented as POJOs following the JavaBeans conventions. Event properties are exposed through getter methods on the POJO. When possible, the results from EPL statement execution are also returned as POJOs. However, there are times when un-typed events are returned such as when event streams are joined. In this case, an instance of the Map collection interface is returned. For more information, see [Section 1.2, "Event Representation"](#).

The EPL processing model is continuous: results are output as soon as incoming events are received that meet the constraints of the statement. Two types of events are generated during output: *insert events* for new events entering the output window and *remove events* for old events exiting the output window. Listeners may be attached and notified when either or both type of events occur. For more information, see [Section 1.3, "Processing Model"](#)

Incoming events may be processed through either sliding or batched windows. Sliding windows process events by gradually moving the window over the data in single increments, while batched windows process events by moving the window over data in discrete chunks. The window size may be defined by the maximum number of events contained or by the maximum amount of time to keep an event.

The EPL programmatic interfaces allow statements to be individually compiled or loaded in bulk through a URL. Statements may be iterated over, retrieved, started and stopped. Listeners may be attached to statements and notified when either insert and/or remove events occur.

The Event Processor Language is a SQL-like language with `SELECT`, `FROM`, `WHERE`, `GROUP BY`, `HAVING` and `ORDER BY` clauses. Streams replace tables as the source of data with events replacing rows as the basic unit of data. Since events are composed of

data, the SQL concepts of correlation through joins, filtering through sub-queries, and aggregation through grouping may be effectively leveraged. The `INSERT INTO` clause is recast as a means of forwarding events to other streams for further downstream processing. External data accessible through JDBC may be queried and joined with the stream data. Additional clauses such as the `RETAIN`, `MATCHING`, and `OUTPUT` clauses are also available to provide the missing SQL language constructs specific to event processing.

The `RETAIN` clause constraints the amount of data over which the query is run, essentially defining a virtual window over the stream data. Unlike relational database systems in which tables bound the extents of the data, event processing systems must provide an alternative, more dynamic means of limiting the queried data.

The `MATCHING` clause detects sequences of events matching a specific pattern. Temporal and logical operators such as `AND`, `OR`, and `FOLLOWED BY` enable both occurrence of and absence of events to be detected through arbitrarily complex expressions.

The `OUTPUT` clause throttles results of statement execution to prevent overloading downstream processors. Either all or a subset of the first or last resulting events may be passed on in either time or row-based batches.

A series of use cases is presented in the last section to illustrate the language features under realistic scenarios

## 1.2 Event Representation

Using EPL, you represent an event as an event object. For more information, see:

- [Section 1.2.1, "Event Objects"](#)
- [Section 1.2.2, "Plain Old Java Object Events"](#)
- [Section 1.2.3, "Map Events"](#)

All event objects include properties. For more information, see:

- [Section 1.2.4, "Event Properties"](#)
- [Section 1.2.5, "Dynamic Event Properties"](#)
- [Section 1.2.6, "Handling Other Event Properties Using a User-Defined Function"](#)

Events are consumed by event sinks. For more information, see [Section 1.2.7, "Event Sinks."](#)

### 1.2.1 Event Objects

An event is an immutable record of a past occurrence of an action or state change. Event properties capture the state information for an event object. An event is represented by either a POJO or a `com.bea.wlevs.cep.event.MapEventObject` that extends the `java.util.Map` interface.

**Table 1–1 Event Representation**

Java Class	Description
<code>java.lang.Object</code>	Any Java POJO with getter methods following JavaBeans conventions.
<code>com.bea.wlevs.ede.api.MapEventObject</code>	Map events are key-values pairs



## 1.2.2 Plain Old Java Object Events

Plain old Java object (POJO) events are object instances that expose event properties through JavaBeans-style getter methods. Events classes or interfaces do not have to be fully compliant to the JavaBeans specification; however for the EPL engine to obtain event properties, the required JavaBeans getter methods must be present.

EPL supports JavaBeans-style event classes that extend a super class or implement one or more interfaces. Also, EPL statements can refer to Java interface classes and abstract classes.

Classes that represent events should be made immutable. As events are recordings of a state change or action that occurred in the past, the relevant event properties should not be changeable. However this is not a hard requirement and the EPL engine accepts events that are mutable as well.

## 1.2.3 Map Events

Events can also be represented by objects that implement the `com.bea.wlevs.ede.api.MapEventObject` interface that extends the `java.util.Map` interface. Event properties of Map events are the values of each entry accessible through the `get` method exposed by the `java.util.Map` interface.

Entries in the Map represent event properties. Keys must be of type `java.util.String` for the engine to be able to look up event property names specified by EPL statements. Values can be of any type. POJOs may also appear as values in a Map.

## 1.2.4 Event Properties

EPL expressions can include simple as well as indexed, mapped and nested event properties. The table below outlines the different types of properties and their syntax in an event expression. This syntax allows statements to query deep JavaBeans objects graphs, XML structures and Map events.

**Table 1–2 Event Properties**

Type	Description	Syntax	Example
Simple	A property that has a single value that may be retrieved. The property type may be a primitive type (such as <code>int</code> , or <code>java.lang.String</code> ) or another complex type.	<code>name</code>	<code>sensorId</code>
Nested	A nested property is a property that lives within another property of an event. Events represented as a Map may only nest other POJO events and not other Map events.	<code>name.nestedname</code>	<code>sensor.value</code>
Indexed	An indexed property stores an ordered collection of objects (all of the same type) that can be individually accessed by an integer valued, non-negative index (or subscript). Events represented as a Map do not support Indexed properties.	<code>name[index]</code>	<code>sensor[0]</code>
Mapped	A mapped property stores a keyed collection of objects (all of the same type). As an extension to standard JavaBeans APIs, EPL considers any property that accepts a String-valued key a mapped property. Events represented as a Map do not support Indexed properties.	<code>name('key')</code>	<code>sensor('light')</code>

Assume there is an `EmployeeEvent` event class as shown below. The mapped and indexed properties in this example return Java objects but could also return Java

language primitive types (such as `int` or `String`). The `Address` object and `Employee` objects can themselves have properties that are nested within them, such as a `streetName` in the `Address` object or a name of the employee in the `Employee` object.

```
public class EmployeeEvent {
    public String getFirstName();
    public Address getAddress(String type);
    public Employee getSubordinate(int index);
    public Employee[] getAllSubordinates();
}
```

*Simple* event properties require a getter-method that returns the property value. In the preceding example, the `getFirstName` getter method returns the `firstName` event property of type `String`.

*Indexed* event properties require either one of the following getter-methods:

- A method that takes an integer type key value and returns the property value, such as the `getSubordinate` method.
- A method returns an array-type such as the `getAllSubordinates` getter method, which returns an array of `Employee`.

In an EPL statement, indexed properties are accessed via the `property[index]` syntax.

*Mapped* event properties require a getter-method that takes a `String` type key value and returns a property value, such as the `getAddress` method. In an EPL or event pattern statement, mapped properties are accessed via the `property ('key')` syntax.

*Nested* event properties require a getter-method that returns the nesting object. The `getAddress` and `getSubordinate` methods are mapped and indexed properties that return a nesting object. In an EPL statement, nested properties are accessed via the `property.nestedProperty` syntax.

All EPL statements allow the use of indexed, mapped and nested properties (or a combination of these) at any place where one or more event property names are expected. The example below shows different combinations of indexed, mapped and nested properties.

```
address('home').streetName
subordinate[0].name='anotherName'
allSubordinates[1].name
subordinate[0].address('home').streetName
```

Similarly, the syntax can be used in EPL statements in all places where an event property name is expected, such as in select lists, where clauses or join criteria.

```
SELECT firstName, address('work'), subordinate[0].name, subordinate[1].name
FROM EmployeeEvent RETAIN ALL
WHERE address('work').streetName = 'Park Ave'
```

## 1.2.5 Dynamic Event Properties

Dynamic (or unchecked) properties are event properties that need not be known at statement compilation time. Oracle CEP resolves these dynamic properties during runtime.

The idea behind dynamic properties is that for a given underlying event representation, the properties are not necessarily known in advance. An underlying

event may have additional properties that are not known at statement compilation time, and these properties might need to be queried on using an EPL statement. The concept is especially useful for events that represent rich, object-oriented domain models.

The syntax of dynamic properties consists of the property name and a question mark. Indexed, mapped and nested properties can also be dynamic properties. The following table describes the types of dynamic event properties and the syntax used to identify them.

**Table 1–3 Syntax of Dynamic Properties**

Event Property Type	Syntax
Dynamic Simple	name?
Dynamic Indexed	name[index]?
Dynamic Mapped	name('key')?
Dynamic Nested	name?.nestedPropertyName

Dynamic properties always return the `java.lang.Object` type. Dynamic properties return a null value if the dynamic property does not exist on the events processed at runtime.

For example, consider an `OrderEvent` event that provides an `item` property. The `item` property is of type `Object` and holds a reference to an instance of either a `Service` or `Product`; which one is known only at runtime. Further assume that both the `Service` and `Product` classes provide a property named `price`. Using a dynamic property, you can specify a query that obtains the `price` property from *either* object (`Service` or `Product`), as shown in the following example:

```
SELECT item.price?
FROM OrderEvent RETAIN ALL EVENTS
```

As a second example, assume that the `Service` class contains a `serviceName` property that the `Product` class does not contain. At runtime, the following query returns the value of the `serviceName` property for `Service` objects; if, however, the query is run against a `Product` object, the query returns a null value because `Products` do not contain the `serviceName` property:

```
SELECT item.serviceName?
FROM OrderEvent RETAIN ALL EVENTS
```

Now consider the case where `OrderEvent` has multiple implementation classes, only some of which have a `timestamp` property. The following query returns the `timestamp` property of those implementations of the `OrderEvent` interface that feature the property:

```
SELECT timestamp?
FROM OrderEvent RETAIN ALL EVENTS
```

The preceding query returns a single column named `timestamp?` of type `java.lang.Object`.

When you nest dynamic properties, all properties under the dynamic property are also considered dynamic properties. In the next example, the query asks for the `direction` property of the object returned by the `detail` dynamic property:

```
SELECT detail?.direction
FROM OrderEvent RETAIN ALL EVENTS
```

The preceding query is equivalent to the following:

```
SELECT detail?.direction?
FROM OrderEvent RETAIN ALL EVENTS
```

The following functions are often useful in conjunction with dynamic properties:

- The `CAST` function casts the value of a dynamic property (or the value of an expression) to a given type. See [Section 4.1.7, "The CAST Function."](#)
- The `EXISTS` function checks whether a dynamic property exists. It returns `true` if the event has a property of that name, or `false` if the property does not exist on that event. See [Section 4.1.8, "The EXISTS Function."](#)
- The `INSTANCEOF` function checks whether the value of a dynamic property (or the value of an expression) is of any of the given types. See [Section 4.1.6, "The INSTANCEOF Function."](#)

## 1.2.6 Handling Other Event Properties Using a User-Defined Function

If your event uses a datatype that EPL does not support, you can create a user-defined function to evaluate that datatype in an EPL query.

Consider the enum datatype that [Example 1–1](#) shows. The event that [Example 1–2](#) shows uses this enum datatype. EPL does not support enum datatypes.

### **Example 1–1 Enum Datatype ProcessStatus**

```
package com.oracle.app;

public enum ProcessStatus {
    OPEN(1),
    CLOSED(0)}
}
```

### **Example 1–2 Event Using Enum Datatype ProcessStatus**

```
package com.oracle.app;

import com.oracle.capp.ProcessStatus;

public class ServiceOrder {
    private String serviceOrderId;
    private String electronicSerialNumber;
    private ProcessStatus status;
    ...
}
```

By creating the user-defined function that [Example 1–3](#) shows and registering the function in your application assembly file as [Example 1–4](#) shows, you can evaluate this enum datatype in an EPL query as [Example 1–5](#) shows.

### **Example 1–3 User-Defined Function to Evaluate Enum Datatype**

```
package com.oracle.app;

import com.oracle.capp.ProcessStatus;
public class CheckIfStatusClosed {
    public boolean execute(Object[] args) {
        ProcessStatus arg0 = (ProcessStatus)args[0];
        if (arg0 == ProcessStatus.OPEN)
            return Boolean.FALSE;
    }
}
```

```

        else
            return Boolean.TRUE;
    }
}

```

#### Example 1–4 Registering the User-Defined Function in Application Assembly File

```

<wlevs:processor id="testProcessor">
  <wlevs:listener ref="providerCache"/>
  <wlevs:listener ref="outputCache"/>
  <wlevs:cache-source ref="testCache"/>
  <wlevs:function function-name="statusClosed" exec-method="execute" />
    <bean class="com.oracle.app.CheckIfStatusClosed" />
  </wlevs:function>
</wlevs:processor>

```

#### Example 1–5 Using the User-Defined Function to Evaluate Enum Datatype in an EPL Query

```

<query id="rule-04"><![CDATA[
  SELECT
    meter.electronicSerialNumber,
    meter.exceptionKind
  FROM
    MeterLogEvent AS meter,
    ServiceOrder AS svco
  WHERE
    meter.electronicSerialNumber = svco.electronicSerialNumber and
    svco.serviceOrderId IS NULL OR statusClosed(svco.status)
]]></query>

```

For more information, see [Chapter 4, "EPL Reference: Functions"](#).

## 1.2.7 Event Sinks

Event sinks provide a means of receiving programmatic notifications when events occur that meet the criteria specified in an EPL statement. Sinks may be notified when either:

- New events occur that meet the criteria specified in an EPL statement. These are termed `ISTREAM` events.
- Old events that previously met the criteria specified in an EPL statement are pushed out of the output window due to their expiration or due to new incoming events occurring that take their place. These are termed `RSTREAM` events.

Detailed examples illustrating when each of these notifications occur are provided in [Section 1.3, "Processing Model."](#)

To receive `ISTREAM` events, use the `com.bea.wlevs.ede.api.EventSink` interface. Your implementation must provide a single `onEvent` method that the engine invokes when results become available. With this interface, only the new events are sent to the listener.

```

public interface EventSink extends EventListener {
    void onEvent(List<Object> newEvents)
        throws RejectEventException;
}

```

The engine provides statement results to event sinks as a list of POJO or `MapEventObject` instances. For wildcard selects, the result will match the original

event object type that was sent into the engine. For joins and select clauses with expressions, the resulting object will implement the `com.bea.wlevs.ede.api.MapEventObject` interface

## 1.3 Processing Model

The EPL processing model is based on event streams as described in [Section 1.3.1, "Event Streams."](#)

You express queries that operate on event streams as described in:

- [Section 1.3.2, "Sliding Windows"](#)
- [Section 1.3.3, "Batched Windows"](#)
- [Section 1.3.4, "Subqueries and WHERE Clauses"](#)
- [Section 1.3.5, "Aggregation"](#)

### 1.3.1 Event Streams

The EPL processing model is continuous: Listeners to statements receive updated data as soon as the engine processes events for that statement, according to the statement's choice of event streams, retain clause restrictions, filters and output rates.

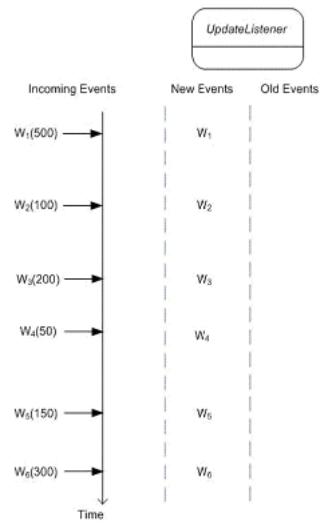
In this section we look at the output of a very simple EPL statement. The statement selects an event stream without using a data window and without applying any filtering, as follows:

```
SELECT * FROM Withdrawal RETAIN ALL
```

This statement selects all `Withdrawal` events. Every time the engine processes an event of type `Withdrawal` or any sub-type of `Withdrawal`, it invokes all update listeners, handing the new event to each of the statement's listeners.

The term insert stream denotes the new events arriving, and entering a data window or aggregation. The insert stream in this example is the stream of arriving `Withdrawal` events, and is posted to update listeners as new events.

The diagram below shows a series of `Withdrawal` events 1 to 6 arriving over time. For this diagram as well as the others in this section, the number in parenthesis is the value of the amount property in the `Withdrawal` event.

**Figure 1–1 Example Event Stream**

The example statement above results in only new events and no old events posted by the engine to the statement's listeners because no `RETAIN` clause is specified.

## 1.3.2 Sliding Windows

There are two types of sliding windows: row-based and time-based. Each of these is discussed in the following sections.

### 1.3.2.1 Row-Based Sliding Windows

A row-based sliding window instructs the engine to only keep the last *N* events for a stream. The next statement applies a length window onto the `Withdrawal` event stream. The statement serves to illustrate the concept of data window and events entering and leaving a data window:

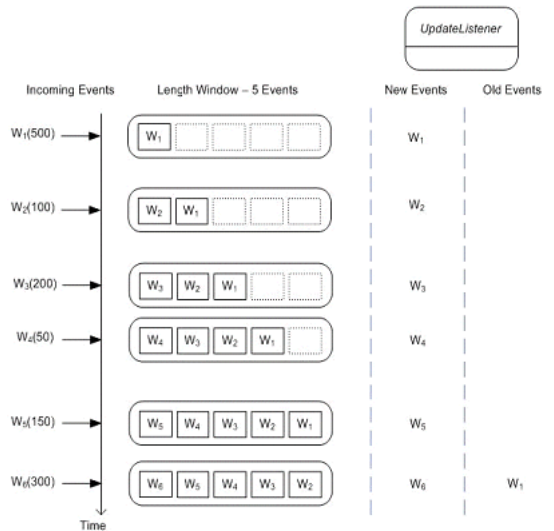
```
SELECT * FROM Withdrawal RETAIN 5 EVENTS
```

The size of this statement's window is five events. The engine enters all arriving `Withdrawal` events into the window. When the window is full, the oldest `Withdrawal` event is pushed out the window. The engine indicates to update listeners all events entering the window as new events, and all events leaving the window as old events.

While the term *insert stream* denotes new events arriving, the term *remove stream* denotes events leaving a data window, or changing aggregation values. In this example, the *remove stream* is the stream of `Withdrawal` events that leave the length window, and such events are posted to update listeners as old events.

The next diagram illustrates how the length window contents change as events arrive and shows the events posted to an update listener.

**Figure 1–2 Example Row-Based Sliding Window**



As before, all arriving events are posted as new events to update listeners. In addition, when event  $W_1$  leaves the length window on arrival of event  $W_6$ , it is posted as an old event to update listeners.

Similar to a length window, a time window also keeps the most recent events up to a given time period. A time window of 5 seconds, for example, keeps the last 5 seconds of events. As seconds pass, the time window actively pushes the oldest events out of the window resulting in one or more old events posted to update listeners.

EPL supports optional `ISTREAM` and `RSTREAM` keywords on `SELECT` clauses and on `INSERT INTO` clauses. These instruct the engine to only forward events that enter or leave data windows, or select only current or prior aggregation values, i.e. the insert stream or the remove stream.

### 1.3.2.2 Time-Based Sliding Windows

A time-based sliding window is a moving window extending to the specified time interval into the past based on the system time. Time-based sliding windows enable us to limit the number of events considered by a query, as do row-based sliding windows.

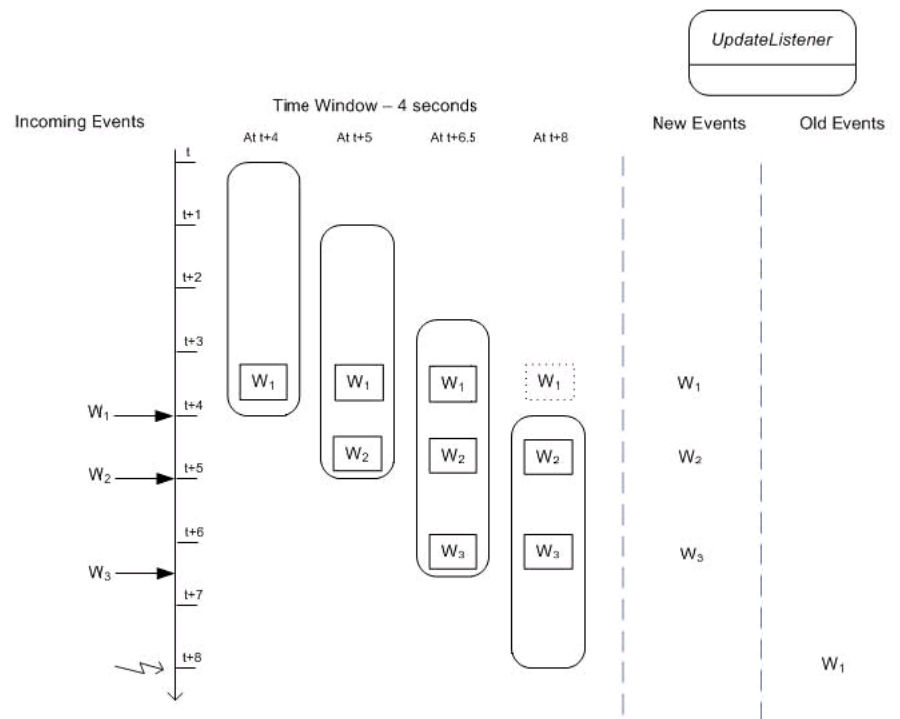
The next diagram serves to illustrate the functioning of a time window. For the diagram, we assume a query that simply selects the event itself and does not group or filter events.

```
SELECT * FROM Withdrawal RETAIN 4 SECONDS
```

The diagram starts at a given time  $t$  and displays the contents of the time window at  $t+4$  and  $t+5$  seconds and so on.



Figure 1-3 Example Time-Based Sliding Window



The activity as illustrated by the diagram:

1. At time  $t + 4$  seconds an event  $W_1$  arrives and enters the time window. The engine reports the new event to update listeners.
2. At time  $t + 5$  seconds an event  $W_2$  arrives and enters the time window. The engine reports the new event to update listeners.
3. At time  $t + 6.5$  seconds an event  $W_3$  arrives and enters the time window. The engine reports the new event to update listeners.
4. At time  $t + 8$  seconds event  $W_1$  leaves the time window. The engine reports the event as an old event to update listeners.

As a practical example, consider the need to determine all accounts where the average withdrawal amount per account for the last 4 seconds of withdrawals is greater than 1000. The statement to solve this problem is shown below.

```
SELECT account, AVG(amount)
FROM Withdrawal RETAIN 4 SECONDS
GROUP BY account
HAVING amount > 1000
```

### 1.3.3 Batched Windows

Both row-based and time-based windows may be batched. The next sections explain each of these concepts in turn.

#### 1.3.3.1 Time-Based Batched Windows

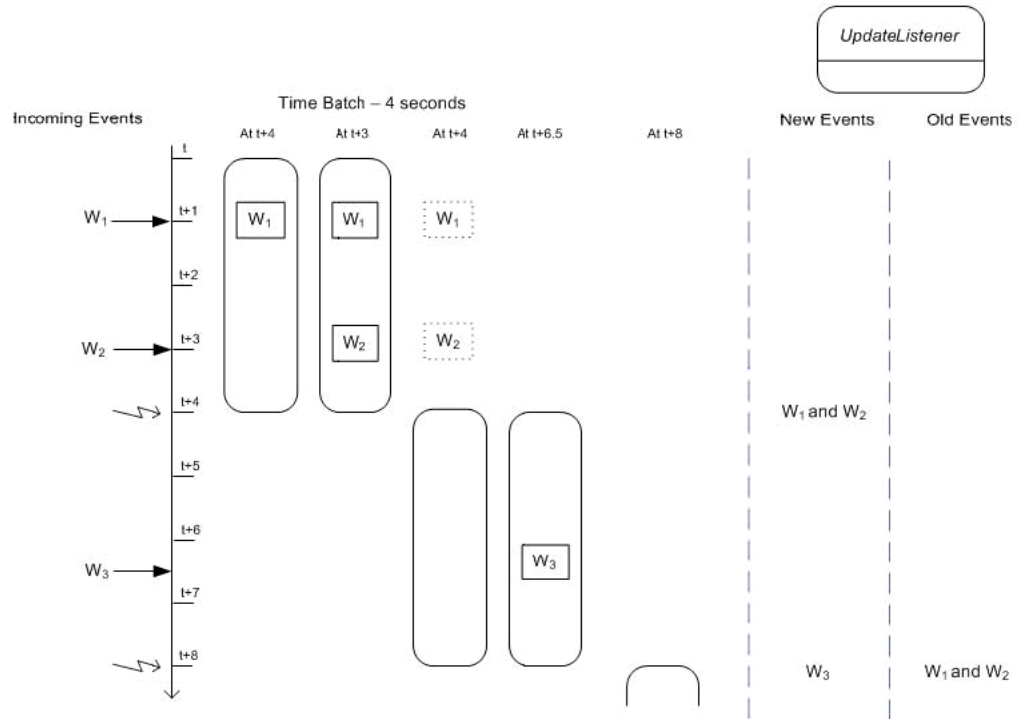
The time-based batch window buffers events and releases them every specified time interval in one update. Time-based batch windows control the evaluation of events, as does the length batch window.

The next diagram serves to illustrate the functioning of a time batch view. For the diagram, we assume a simple query as below:

```
SELECT * FROM Withdrawal RETAIN BATCH OF 4 SECONDS
```

The diagram starts at a given time  $t$  and displays the contents of the time window at  $t + 4$  and  $t + 5$  seconds and so on.

**Figure 1–4 Example Time-Based Batched Window**



The activity as illustrated by the diagram:

1. At time  $t + 1$  seconds an event  $W_1$  arrives and enters the batch. No call to inform update listeners occurs.
2. At time  $t + 3$  seconds an event  $W_2$  arrives and enters the batch. No call to inform update listeners occurs.
3. At time  $t + 4$  seconds the engine processes the batched events and a starts a new batch. The engine reports events  $W_1$  and  $W_2$  to update listeners.
4. At time  $t + 6.5$  seconds an event  $W_3$  arrives and enters the batch. No call to inform update listeners occurs.
5. At time  $t + 8$  seconds the engine processes the batched events and a starts a new batch. The engine reports the event  $W_3$  as new data to update listeners. The engine reports the events  $W_1$  and  $W_2$  as old data (prior batch) to update listeners.

### 1.3.3.2 Row-Based Batched Windows

A row-based window may be batched as well. For example, the following query would wait to receive five events prior to doing any processing:

```
SELECT * FROM Withdrawal RETAIN BATCH OF 5 EVENTS
```

Once five events were received, the query would run and again wait for a new set of five events prior to processing.

### 1.3.4 Subqueries and WHERE Clauses

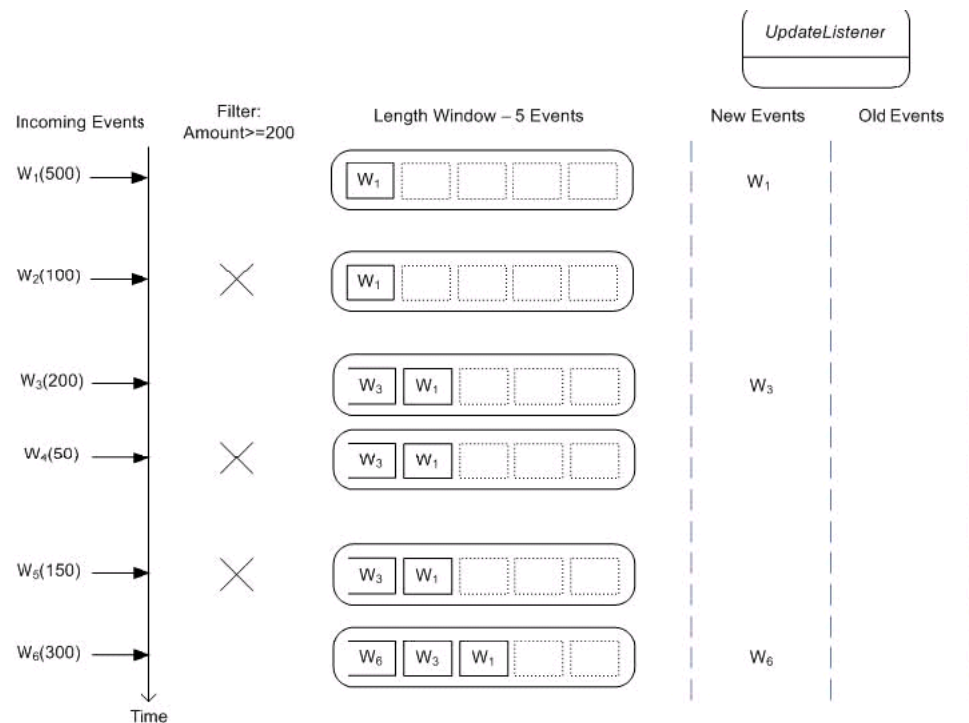
Filters to event streams appear in a subquery expression and allow filtering events out of a given stream before events enter a data window. This filtering occurs prior to the WHERE clause executing. When possible, filtering should be done in a subquery as opposed to the WHERE clause, since this will improve performance by reducing the amount of data seen by the rest of the EPL statement.

The statement below shows a subquery that selects Withdrawal events with an amount value of 200 or more.

```
SELECT * FROM (SELECT * FROM Withdrawal WHERE amount >= 200) RETAIN 5 EVENTS
```

With the subquery, any Withdrawal events that have an amount of less than 200 do not enter the window of the outer query and are therefore not passed to update listeners.

**Figure 1–5 Example Subquery and WHERE Clause**



The WHERE clause and HAVING clause in statements eliminate potential result rows at a later stage in processing, after events have been processed into a statement's data window or other views.

The next statement applies a WHERE clause to Withdrawal events instead of a subquery.

```
SELECT * FROM Withdrawal RETAIN 5 EVENTS WHERE amount >= 200
```

The WHERE clause applies to both new events and old events. As the diagram below shows, arriving events enter the window regardless of the value of the "amount" property. However, only events that pass the WHERE clause are handed to update

listeners. Also, as events leave the data window, only those events that pass the conditions in the WHERE clause are posted to update listeners as old events.

**Figure 1–6 Events Arriving in a Row-Based Sliding Window**



The WHERE clause can contain complex conditions while event stream filters are more restrictive in the type of filters that can be specified. The next statement's WHERE clause applies the `ceil` function of the `java.lang.Math` Java library class in the where clause. The `INSERT INTO` clause makes the results of the first statement available to the second statement:

```
INSERT INTO BigWithdrawal
SELECT * FROM Withdrawal RETAIN ALL WHERE Math.ceil(amount) >= 200
SELECT * FROM BigWithdrawal RETAIN ALL
```

### 1.3.5 Aggregation

Statements that aggregate events via aggregations functions also post remove stream events as aggregated values change. Consider the following statement that alerts when two `Withdrawal` events have been received:

```
SELECT COUNT(*) AS mycount
FROM Withdrawal RETAIN ALL
HAVING COUNT(*) = 2
```

When the engine encounters the second withdrawal event, the engine posts a new event to update listeners. The value of the `mycount` property on that new event is 2. Additionally, when the engine encounters the third `Withdrawal` event, it posts an old event to update listeners containing the prior value of the count. The value of the `mycount` property on that old event is also 2.

The `ISTREAM` or `RSTREAM` keyword can be used to eliminate either new events or old events posted to update listeners. The next statement uses the `ISTREAM` keyword

causing the engine to call the update listener only once when the second `Withdrawal` event is received:

```
SELECT ISTREAM COUNT(*) AS mycount
FROM Withdrawal RETAIN ALL
HAVING COUNT(*) = 2
```

## 1.4 Use Cases

The use cases below illustrate through examples usage of various language features.

### 1.4.1 Computing Rates per Feed

For the throughput statistics and to detect rapid fall-off we calculate a ticks per second rate for each market data feed.

We can use an EPL statement that batches together 1 second of events from the market data event stream source. We specify the feed and a count of events per feed as output values. To make this data available for further processing, we insert output events into the `TicksPerSecond` event stream:

```
INSERT INTO TicksPerSecond
SELECT feed, COUNT(*) AS cnt
FROM MarketDataEvent
RETAIN BATCH OF 1 SECOND
GROUP BY feed
```

### 1.4.2 Computing Highest Priced Stocks

For computing the highest priced stocks, we define a sliding window that retains 100 events for each unique stock symbol where the block size of the trade is greater than 10. For example, if there are 5,000 stock symbols, then 5,000 x 100 or 500,000 events would be kept. Only `MarketTrade` events with a block size of greater than 10 will enter the window and only the 100 highest priced events will be retained.

The results will be grouped by stock symbol and ordered alphabetically with stock symbols having an average price of less than 100 being filtered from the output.

```
SELECT symbol, AVG(price)
FROM (SELECT * FROM MarketTrade WHERE blockSize > 10)
RETAIN 100 EVENTS WITH LARGEST price PARTITION BY symbol
GROUP BY symbol
HAVING AVG(price) >= 100
ORDER BY symbol
```

### 1.4.3 Segmenting Location Data

We detect the route a car is taking based on the car location event data that contains information about the location and direction of a car on a highway. We first segment the data by `carId` to isolate information about a particular car and subsequently segment by `expressway`, `direction` and `segment` to plot its direction. We are then able to calculate the speed of the car based on this information.

The first `PARTITION BY carId` groups car location events by car while the following `PARTITION BY expressway PARTITION BY direction` further segment the data by more detailed location and direction property values. The number of events retained, 4 in this query, applies to the maximum number kept for the last `PARTITION BY` clause. Thus at most 4 events will be kept for each distinct segment property value.

```
SELECT carId, expressway, direction,  
       SUM(segment)/(MAX(timestamp)-MIN(timestamp)) AS speed  
FROM CarLocationEvent  
RETAIN 4 events  
PARTITION BY carId PARTITION BY expressway PARTITION BY direction
```

### 1.4.4 Detecting Rapid Fall-off

We define a rapid fall-off by alerting when the number of ticks per second for any second falls below 75% of the average number of ticks per second over the last 10 seconds.

We can compute the average number of ticks per second over the last 10 seconds simply by using the `TicksPerSecond` events computed by the prior statement and averaging the last 10 seconds. Next, we compare the current rate with the moving average and filter out any rates that fall below 75% of the average:

```
SELECT feed, AVG(cnt) AS avgCnt, cnt AS feedCnt  
FROM TicksPerSecond  
RETAIN 10 seconds  
GROUP BY feed  
HAVING cnt < AVG(cnt) * 0.75
```

### 1.4.5 Finding Network Anomalies

A customer may be in the middle of a check-in when the terminal detects a hardware problem or when the network goes down. In that situation we want to alert a team member to help the customer. When the terminal detects a problem, it issues an `OutOfOrder` event. A pattern can find situations where the terminal indicates out-of-order and the customer is in the middle of the check-in process:

```
SELECT ci.term  
MATCHING ci:=Checkin FOLLOWED BY  
        ( OutOfOrder (term.id=ci.term.id) AND NOT  
          (Cancelled (term.id=ci.term.id) OR  
            Completed (term.id=ci.term.id) ) WITHIN 3 MINUTES )
```

Each self-service terminal can publish any of the four events below.

- `Checkin` - Indicates a customer started a check-in dialogue.
- `Cancelled` - Indicates a customer cancelled a check-in dialogue.
- `Completed` - Indicates a customer completed a check-in dialogue.
- `OutOfOrder` - Indicates the terminal detected a hardware problem

All events provide information about the terminal that published the event, and a timestamp. The terminal information is held in a property named `term` and provides a terminal `id`. Because all events carry similar information, we model each event as a subtype to a base class `TerminalEvent`, which will provide the terminal information that all events share. This enables us to treat all terminal events polymorphically, which simplifies our queries by allowing us to treat derived event types just like their parent event types.

### 1.4.6 Detecting Absence of Event

Because `Status` events arrive in regular intervals of 60 seconds, we can make use of temporal pattern matching using the `MATCHING` clause to find events that did not arrive in time. We can use the `WITHIN` operator to keep a 65 second window to

account for a possible delay in transmission or processing and the NOT operator to detect the absence of a Status event with a term.id equal to T1:

```
SELECT 'terminal 1 is offline'
MATCHING NOT Status(term.id = 'T1') WITHIN 65 SECONDS
OUTPUT FIRST EVERY 5 MINUTES
```

### 1.4.7 Summarizing Terminal Activity Data

By presenting statistical information about terminal activity to our staff in real-time we enable them to monitor the system and spot problems. The next example query simply gives us a count per event type every 1 minute. We could further use this data, available through the CountPerType event stream, to join and compare against a recorded usage pattern, or to just summarize activity in real-time.

```
INSERT INTO CountPerType
SELECT type, COUNT(*) AS countPerType
FROM TerminalEvent
RETAIN 10 MINUTES
GROUP BY type
OUTPUT ALL EVERY 1 MINUTE
```

### 1.4.8 Reading Sensor Data

In this example an array of RFID readers sense RFID tags as pallets are coming within the range of one of the readers. A reader generates XML documents with observation information such as reader sensor ID, observation time and tags observed. A statement computes the total number of tags per reader sensor ID within the last 60 seconds.

```
SELECT ID AS sensorId, SUM(countTags) AS numTagsPerSensor
FROM AutoIdRFIDExample
RETAIN 60 SECONDS
WHERE Observation[0].Command = 'READ_PALLET_TAGS_ONLY'
GROUP BY ID
```

### 1.4.9 Combining Transaction Events

In this example we compose an EPL statement to detect combined events in which each component of the transaction is present. We restrict the event matching to the events that arrived within the last 30 minutes. This statement uses the INSERT INTO syntax to generate a CombinedEvent event stream.

```
INSERT INTO CombinedEvent(transactionId, customerId, supplierId,
    latencyAC, latencyBC, latencyAB)
SELECT C.transactionId, customerId, supplierId,
    C.timestamp - A.timestamp,
    C.timestamp - B.timestamp,
    B.timestamp - A.timestamp
FROM TxnEventA A, TxnEventB B, TxnEventC C
RETAIN 30 MINUTES
WHERE A.transactionId = B.transactionId AND
    B.transactionId = C.transactionId
```

### 1.4.10 Monitoring Real-time Performance

To derive the minimum, maximum and average total latency from the events (difference in time between A and C) over the past 30 minutes we can use the EPL below. In addition, in order to monitor the event server, a dashboard UI will subscribe to a subset of the events to measure system performance such as server and

end-to-end latency. It is not feasible to expect a UI to monitor every event flowing through the system, so there must be a way of rate limiting the output to a subset of the events that can be handled by the monitoring application. Only the single last event or all events can be output.

```
SELECT MIN(latencyAC) as minLatencyAC,  
       MAX(latencyAC) as maxLatencyAC,  
       AVG(latencyAC) as avgLatencyAC  
FROM CombinedEvent  
RETAIN 30 MINUTES  
GROUP BY customerId  
OUTPUT LAST 50 EVERY 1 SECOND
```

### 1.4.11 Finding Dropped Transaction Events

An `OUTER JOIN` allows us to detect a transaction that did not make it through all three events. When `TxnEventA` or `TxnEventB` events leave their respective time windows consisting of the last 30 minutes of events, EPL filters out rows in which no `EventC` row was found.

```
SELECT *  
FROM TxnEventA A  
     FULL OUTER JOIN TxnEventC C ON A.transactionId = C.transactionId  
     FULL OUTER JOIN TxnEventB B ON B.transactionId = C.transactionId  
RETAIN 30 MINUTES  
WHERE C.transactionId is null
```



---

---

## EPL Reference: Clauses

This section provides information on the following topics:

- [Section 2.1, "Overview of the Clauses You Can Use in an EPL Statement"](#)
- [Section 2.2, "SELECT"](#)
- [Section 2.3, "FROM"](#)
- [Section 2.4, "RETAIN"](#)
- [Section 2.5, "MATCHING"](#)
- [Section 2.6, "WHERE"](#)
- [Section 2.7, "GROUP BY"](#)
- [Section 2.8, "HAVING"](#)
- [Section 2.9, "ORDER BY"](#)
- [Section 2.10, "OUTPUT"](#)
- [Section 2.11, "INSERT INTO"](#)
- [Section 2.12, "Simple and Correlated Subqueries"](#)
- [Section 2.13, "Parameterized Queries"](#)

### 2.1 Overview of the Clauses You Can Use in an EPL Statement

The top-level BNF for the event processing language (EPL) is as follows:

```
[ INSERT INTO insert_into_def ]
SELECT select_list
{ FROM stream_source_list / MATCHING pattern_expression }
[ WHERE search_conditions ]
[ GROUP BY grouping_expression_list ]
[ HAVING grouping_search_conditions ]
[ ORDER BY order_by_expression_list ]
[ OUTPUT output_specification ]
```

Literal keywords are not case sensitive. Each clause is detailed in the following sections. For information on the built-in operators and functions, see [Chapter 3, "EPL Reference: Operators"](#) and [Chapter 4, "EPL Reference: Functions."](#)

### 2.2 SELECT

The `SELECT` clause is required in all EPL statements. The `SELECT` clause can be used to select all properties using the wildcard `*`, or to specify a list of event properties and

expressions. The `SELECT` clause defines the event type (event property names and types) of the resulting events published by the statement, or pulled from the statement.

The `SELECT` clause also offers optional `ISTREAM` and `RSTREAM` keywords to control how events are posted to update listeners attached to the statement.

The syntax for the `SELECT` clause is summarized below.

```
SELECT [RSTREAM | ISTREAM] ( expression_list | * )
```

The following examples use the `FROM` clause which defines the sources of the event data. The `FROM` clause is described in [Section 2.3, "FROM."](#)

## 2.2.1 Choosing Specific Event Properties

To choose the particular event properties to return:

```
SELECT event_property [, event_property] [, ...]  
FROM stream_def
```

The following statement selects the count and standard deviation of the volume for the last 100 stock tick events.

```
SELECT COUNT, STDDEV(volume)  
FROM StockTick RETAIN 100 EVENTS
```

## 2.2.2 Using Expressions

The `SELECT` clause can contain one or more expressions.

```
SELECT expression [, expression] [, ...]  
FROM stream_def
```

The following statement selects the volume multiplied by price for a time batch of the last 30 seconds of stock tick events.

```
SELECT volume * price  
FROM StockTick RETAIN BATCH OF 30 SECONDS
```

## 2.2.3 Aliasing Event Properties

Event properties and expressions can be aliased using below syntax.

```
SELECT [event_property | expression] AS identifier [,...]
```

The following statement selects volume multiplied by price and specifies the name `volPrice` for the event property.

```
SELECT volume * price AS volPrice  
FROM StockTick RETAIN 100 EVENTS
```

## 2.2.4 Choosing All Event Properties

The syntax for selecting all event properties in a stream is:

```
SELECT *  
FROM stream_def
```

The following statement selects all of the `StockTick` event properties for the last 30 seconds:

```
SELECT *
```

```
FROM StockTick RETAIN 30 SECONDS
```

In a join statement, using the `SELECT *` syntax selects event properties that contain the events representing the joined streams themselves.

The `*` wildcard and expressions can also be combined in a `SELECT` clause. The combination selects all event properties and in addition the computed values as specified by any additional expressions that are part of the `SELECT` clause. Here is an example that selects all properties of stock tick events plus a computed product of price and volume that the statement names `pricevolume`:

```
SELECT *, price * volume AS pricevolume
FROM StockTick RETAIN ALL
```

## 2.2.5 Selecting New and Old Events With `ISTREAM` and `RSTREAM` Keywords

The optional `ISTREAM` and `RSTREAM` keywords in the `SELECT` clause define the event stream posted to update listeners to the statement. If neither keyword is specified, the engine posts both insert and remove stream events to statement listeners. The insert stream consists of the events entering the respective window(s) or stream(s) or aggregations, while the remove stream consists of the events leaving the respective window(s) or the changed aggregation result. Insert and remove events are explained in more detail in [Section 1.2.7, "Event Sinks."](#)

By specifying the `ISTREAM` keyword you can instruct the engine to only post insert stream events to update listeners. The engine will then not post any remove stream events. By specifying the `RSTREAM` keyword you can instruct the engine to only post remove stream events to update listeners. The engine will then not post any insert stream events.

The following statement selects only the events that are leaving the 30 second time window.

```
SELECT RSTREAM *
FROM StockTick RETAIN 30 SECONDS
```

The `ISTREAM` and `RSTREAM` keywords in the `SELECT` clause are matched by same-name keywords available in the `INSERT INTO` clause as explained in [Section 2.11, "INSERT INTO."](#) While the keywords in the `SELECT` clause control the event stream posted to update listeners to the statement, the same keywords in the insert into clause specify the event stream that the engine makes available to other statements.

## 2.3 FROM

Either the `FROM` or the `MATCHING` clause is required in all EPL statements. The `FROM` clause specifies one or more event streams as the source of the event data. The `MATCHING` clause is discussed in [Section 2.5, "MATCHING."](#)

```
FROM stream_expression [ inner_join | outer_join ]
```

with `inner_join` specified as a comma separated list of stream expressions:

```
(, stream_expression )*
```

and `outer_join` defined as:

```
((LEFT|RIGHT|FULL) OUTER JOIN stream_expression ON prop_name = prop_name)*
```

Inner joins are discussed in detail in [Section 2.3.1, "Inner Joins"](#) while outer joins are discussed in [Section 2.3.2, "Outer Joins."](#)

A *stream\_expression* may simply define the name of the event type used as the source of the stream data, or in more complex scenarios define either a subquery expression as a nested EPL statement or a parameterized SQL query to access JDBC data. In all of these cases, the *stream\_expression* may optionally include an alias as an identifier to qualify any ambiguous property name references in other expressions and a `RETAIN` clause to define the window of stream data seen by the rest of the query:

```
(stream_name | subquery_expr | param_sql_query) [[AS] alias] [RETAIN retain_expr]
subquery_expr: ( epl_statement )
param_sql_query: database_name ('parameterized_sql_query')
```

The *subquery\_expr* defines a subquery or nested EPL statement in parenthesis. A subquery is used to pre-filter event stream data seen by the outer EPL statement. For example, the following query would restrict the data seen by the outer EPL statement to only *StockTick* events coming from a Reuters feed.

```
SELECT stockSymbol, AVG(price)
FROM (SELECT * FROM StockTick WHERE feedName = 'Reuters' )
RETAIN 1 MINUTE PARTITION BY stockSymbol
GROUP BY stockSymbol
```

Subqueries may be arbitrarily nested, but may not contain an `INSERT INTO` or an `OUTPUT` clause. Unlike with a top level EPL statement, a `RETAIN` clause is optional within a subquery. Subquery expressions are discussed in more detail in [Section 2.3.3, "Subquery Expressions."](#)

The *param\_sql\_query* specifies a parameterized SQL query in quotes surrounded by parenthesis that enables reference and historical data accessible through JDBC to be retrieved. The *database\_name* identifies the name of the database over which the query will be executed. Configuration information is associated with this database name to establish a database connection, control connection creation and removal, and to setup caching policies for query results. Parameterized SQL queries are discussed in more detail in [Section 2.3.4, "Parameterized SQL Queries."](#)

The `RETAIN` clause defines the quantity of event data read from the streams listed in the `FROM` clause prior to query processing. Each stream may have its own `RETAIN` clause if each require different retain policies. Otherwise, the `RETAIN` clause may appear at the end of the `FROM` clause for it to apply to all streams. Essentially the `RETAIN` clause applies to all streams that appear before it in the `FROM` clause.

For example, in the following EPL statement, five *StockTick* events will be retained while three *News* events will be retained:

```
SELECT t.stockSymbol, t.price, n.summary
FROM StockTick t RETAIN 5 EVENTS, News n RETAIN 3 EVENTS
WHERE t.stockSymbol = n.stockSymbol
```

However, in the following statement, four *StockTick* and four *News* events will be retained:

```
SELECT t.stockSymbol, t.price, n.summary
FROM StockTick t, News n RETAIN 4 EVENTS
WHERE t.stockSymbol = n.stockSymbol
```

With the exception of subquery expressions, all stream sources must be constrained by a `RETAIN` clause. Thus at a minimum the `FROM` clause must contain at least one `RETAIN` clause at the end for top level EPL statements. The external data from

parameterized SQL queries is not affected by the `RETAIN` clause. The `RETAIN` clause is discussed in more detail in [Section 2.4, "RETAIN."](#)

### 2.3.1 Inner Joins

Two or more event streams can be part of the `FROM` clause and thus both streams determine the resulting events. The `WHERE` clause lists the join conditions that EPL uses to relate events in two or more streams. If the condition is failed to be met, for example if no event data occurs for either of the joined stream source, no output will be produced.

Each point in time that an event arrives to one of the event streams, the two event streams are joined and output events are produced according to the where-clause.

This example joins two event streams. The first event stream consists of fraud warning events for which we keep the last 30 minutes. The second stream is withdrawal events for which we consider the last 30 seconds. The streams are joined on account number.

```
SELECT fraud.accountNumber AS acctNum,
       fraud.warning AS warn, withdraw.amount AS amount,
       MAX(fraud.timestamp, withdraw.timestamp) AS timestamp,
       'withdrawalFraud' AS desc
FROM FraudWarningEvent AS fraud RETAIN 30 MIN,
     WithdrawalEvent AS withdraw RETAIN 30 SEC
WHERE fraud.accountNumber = withdraw.accountNumber
```

### 2.3.2 Outer Joins

Left outer joins, right outer joins and full outer joins between an unlimited number of event streams are supported by EPL. Depending on the `LEFT`, `RIGHT`, or `FULL` qualifier, in the absence of event data from either stream source, output may still occur.

If the outer join is a left outer join, there will be an output event for each event of the stream on the left-hand side of the clause. For example, in the left outer join shown below we will get output for each event in the stream `RfidEvent`, even if the event does not match any event in the event stream `OrderList`.

```
SELECT *
FROM RfidEvent AS rfid
     LEFT OUTER JOIN
     OrderList AS orderlist
     ON rfid.itemId = orderlist.itemId
RETAIN 30 SECONDS
```

Similarly, if the join is a Right Outer Join, then there will be an output event for each event of the stream on the right-hand side of the clause. For example, in the right outer join shown below we will get output for each event in the stream `OrderList`, even if the event does not match any event in the event stream `RfidEvent`.

```
SELECT *
FROM RfidEvent AS rfid
     RIGHT OUTER JOIN
     OrderList AS orderlist
     ON rfid.itemId = orderlist.itemId
RETAIN 30 SECONDS
```

For all types of outer joins, if the join condition is not met, the select list is computed with the event properties of the arrived event while all other event properties are considered to be null.

```

SELECT *
FROM RfidEvent AS rfid
      FULL OUTER JOIN
      OrderList AS orderlist
      ON rfid.itemId = orderList.itemId
RETAIN 30 SECONDS

```

The last type of outer join is a full outer join. In a full outer join, each point in time that an event arrives to one of the event streams, one or more output events are produced. In the example below, when either an `RfidEvent` or an `OrderList` event arrive, one or more output event is produced.

### 2.3.3 Subquery Expressions

A subquery expression is a nested EPL statement that appears in parenthesis in the FROM clause. A subquery may not contain an `INSERT INTO` clause or an `OUTPUT` clause, and unlike top level EPL statements, a `RETAIN` clause is optional.

Subquery expressions execute prior to their containing EPL statement and thus are useful to pre-filter event data seen by the outer statement. For example, the following query would calculate the moving average of a particular stock over the last 100 `StockTick` events:

```

SELECT AVG(price)
FROM (SELECT * FROM StockTick WHERE stockSymbol = 'ACME' )
RETAIN 100 EVENTS

```

If the `WHERE` clause had been placed in the outer query, `StockTick` events for other stock symbols would enter into the window, reducing the number of events used to calculate the average price.

In addition, a subquery may be used to *a)* transform the structure of the inner event source to the structure required by the outer EPL statement or *b)* merge multiple event streams to form a single stream of events. This allows a single EPL statement to be used instead of multiple EPL statements with an `INSERT INTO` clause connecting them. For example, the following query merges transaction data from `EventA` and `EventB` and then uses the combined data in the outer query:

```

SELECT custId, SUM(latency)
FROM (SELECT A.customerId AS custId, A.timestamp -B.timestamp AS latency
      FROM EventA A, EventB B
      WHERE A.txnId = B.txnId)
RETAIN 30 MIN
GROUP BY custId

```

A subquery itself may contain subqueries thus allowing arbitrary levels of nesting.

### 2.3.4 Parameterized SQL Queries

Parameterized SQL queries enable reference and historical data accessible through JDBC to be queried via SQL within EPL statements. In order for such data sources to become accessible to EPL, some configuration is required.

The following restrictions currently apply:

- Only one event stream and one SQL query may be joined; Joins of two or more event streams with an SQL query are not supported.
- Constraints specified in the `RETAIN` clause are ignored for the stream for the SQL query; that is, one cannot create a time-based or event-based window on an SQL

query. However one can use the `INSERT INTO` syntax to make join results available to a further statement.

- Your database software must support JDBC prepared statements that provide statement metadata at compilation time. Most major databases provide this function.

The query string is single or double quoted and surrounded by parentheses. The query may contain one or more substitution parameters. The query string is passed to your database software unchanged, allowing you to write any SQL query syntax that your database understands, including stored procedure calls.

Substitution parameters in the SQL query string take the form `${event_property_name}`. The engine resolves `event_property_name` at statement execution time to the actual event property value supplied by the events in the joined event stream.

The engine determines the type of the SQL query output columns by means of the result set metadata that your database software returns for the statement. The actual query results are obtained via the `getObject` on `java.sql.ResultSet`.

The sample EPL statement below joins an event stream consisting of `CustomerCallEvent` events with the results of an SQL query against the database named `MyCustomerDB` and table `Customer`:

```
SELECT custId, cust_name
FROM CustomerCallEvent,
MyCustomerDB (' SELECT cust_name FROM Customer WHERE cust_id = ${custId} ')
RETAIN 10 MINUTES
```

The example above assumes that `CustomerCallEvent` supplies an event property named `custId`. The SQL query selects the customer name from the `Customer` table. The `WHERE` clause in the SQL matches the `Customer` table column `cust_id` with the value of `custId` in each `CustomerCallEvent` event. The engine executes the SQL query for each new `CustomerCallEvent` encountered.

If the SQL query returns no rows for a given customer id, the engine generates no output event. Else the engine generates one output event for each row returned by the SQL query. An outer join as described in the next section can be used to control whether the engine should generate output events even when the SQL query returns no rows.

The next example adds a time window of 30 seconds to the event stream `CustomerCallEvent`. It also renames the selected properties to `customerName` and `customerId` to demonstrate how the naming of columns in an SQL query can be used in the `SELECT` clause in the EQL query. The example uses explicit stream names via the `AS` keyword.

```
SELECT customerId, customerName
FROM CustomerCallEvent AS cce RETAIN 30 SECONDS,
MyCustomerDB
("SELECT cust_id AS customerId, cust_name AS customerName
FROM Customer WHERE cust_id = ${cce.custId}") AS cq
```

Any window, such as the time window, generates insert events as events enter the window, and remove events as events leave the window. The engine executes the given SQL query for each `CustomerCallEvent` in both the insert stream and the remove stream cases. As a performance optimization, the `ISTREAM` or `RSTREAM` keywords in the `SELECT` clause can be used to instruct the engine to only join insert or remove events, reducing the number of SQL query executions.

Parameterized SQL queries may be used in outer joins as well. Use a left outer join, such as in the next statement, if you need an output event for each event regardless of whether or not the SQL query returns rows. If the SQL query returns no rows, the join result populates null values into the selected properties.

```
SELECT custId, custName
FROM CustomerCallEvent AS cce
LEFT OUTER JOIN
MyCustomerDB
("SELECT cust_id, cust_name AS custName
FROM Customer WHERE cust_id = ${cce.custId}") AS cq
ON cce.custId = cq.cust_id
RETAIN 10 MINUTES
```

The statement above always generates at least one output event for each `CustomerCallEvent`, containing all columns selected by the SQL query, even if the SQL query does not return any rows. Note the `ON` expression that is required for outer joins. The `ON` acts as an additional filter to rows returned by the SQL query.

## 2.4 RETAIN

At least one `RETAIN` clause is required in the `FROM` clause. The `RETAIN` clause applies to all stream sources listed in the `FROM` clause that precedes it. Conceptually it defines a window of event data for each stream source over which the query will be executed. The `RETAIN` clause has the following syntax:

```
RETAIN
( ALL [EVENTS] ) |
( [BATCH OF]
  ( integer (EVENT|EVENTS) ) | ( time_interval (BASED ON prop_name)* )
  ( WITH [n] (LARGEST | SMALLEST | UNIQUE) prop_name )*
  ( PARTITION BY prop_name )* )
```

Each aspect of the `RETAIN` clause is discussed in detail below.

### 2.4.1 Keeping All Events

To keep all events for a stream source, specify the `ALL [EVENTS]` in the `RETAIN` clause.

```
SELECT AVG(price)
FROM StockTick RETAIN ALL EVENTS
```

In this case, the average price will be calculated based on all `StockTick` events that occur. Care must be taken with this option, however, since memory may run out when making calculations that require all or part of each event object to be retained under high volume scenarios. One such example would be in calculating a weighted average.

### 2.4.2 Specifying Window Size

The amount of event data to keep when running the query may be determined in two ways. The first option is to specify the maximum number of events kept. For example, the query below would keep a maximum of 100 `StockTick` events on which the average price would be computed:

```
SELECT AVG(price)
FROM StockTick RETAIN 100 EVENTS
```



As each new `StockTick` event comes in, the average price would be computed, with a maximum of 100 events being used for the calculation.

The second option is to specify the time interval in which to collect event data. For example, the query below would keep 1 minute's worth of `StockTick` events and compute the average price for this data:

```
SELECT AVG(price)
FROM StockTick RETAIN 1 MINUTE
```

In this case, as each new `StockTick` event comes in, again the average price would be computed. However, events that arrived more than one minute ago would be removed from the window with the average price being recalculated based on the remaining events in the window.

### 2.4.3 Specifying Batched Versus Sliding Windows

By default, the windows holding event data are sliding. With sliding windows, as a new event enters the window, an old events fall off the end of the window once the window is at capacity. Sliding windows cause the query to be re-executed as each new event enters and/or old event leaves the window. An alternative is to specify that the event data should be batched prior to query execution. Only when the window is full, is the query is executed. After this, new event data will again be collected until the window is once again full at which time the query will be re-executed.

For example, the query below would batch together 100 events prior to executing the query to compute the average price:

```
SELECT AVG(price)
FROM StockTick RETAIN BATCH OF 100 EVENTS
```

Once executed, it would batch the next 100 events together prior to re-executing the query.

For more detail on sliding versus batched windows, see [Section 1.3, "Processing Model."](#)

### 2.4.4 Specifying Time Interval

The time interval for the `RETAIN` clause may be specified in days, hours, minutes, seconds, and/or milliseconds:

```
time_interval:
[day-part][hour-part][minute-part][seconds-part][milliseconds-part]
day-part: number ("days" | "day")
hour-part: number ("hours" | "hour" | "hr")
minute-part: number ("minutes" | "minute" | "min")
seconds-part: number ("seconds" | "second" | "sec")
milliseconds-part: number ("milliseconds" | "millisecond" | "msec" | "ms")
```

Some examples of time intervals are:

```
10 seconds
10 minutes 30 seconds
20 sec 100 msec
0.5 minutes
1 day 2 hours 20 minutes 15 seconds 110 milliseconds
```

### 2.4.4.1 BASED ON Clause

By default, the elapse of a time interval is based on the internal system clock. However, in some cases, the time needs to be based on a timestamp value appearing as an event property. In this case, the `BASED ON` clause may be used to specify the property name containing a long-typed timestamp value. In this example, the `StockTick` events would be expected to have a `timestamp` property of type `long` whose value would control inclusion into and removal from the window:

```
SELECT AVG(price)
FROM StockTick RETAIN 1 MINUTE BASED ON timestamp
```

When using the `BASED ON` clause, each stream source listed in the `FROM` clause must have an associated timestamp property listed or Oracle CEP will throw an exception.

### 2.4.5 Specifying Property Name

A property may be referred to by simply using its property name within the `RETAIN` clause. However, if ambiguities exist because the same property name exists in more than one stream source in the `FROM` clause, it must be prefixed with its alias name followed by a period (similar to the behavior of properties referenced in the `SELECT` clause).

### 2.4.6 Using PARTITION BY Clause to Partition Window

The `PARTITION BY` clause allows a window to be further subdivided into multiple windows based on the unique values contained in the properties listed. For example, the following query would keep 3 events for each unique stock symbol:

```
SELECT stockSymbol, price
FROM StockTick RETAIN 3 EVENTS PARTITION BY stockSymbol
```

Conceptually this is similar to the `GROUP BY` functionality in SQL or EPL. However, the `PARTITION BY` clause only controls the size and subdivision of the window and does not cause event data to be aggregated as with the `GROUP BY` clause. However, in most cases, the `PARTITION BY` clause is used in conjunction with the `GROUP BY` clause with same properties specified in both.

The following examples illustrate the interaction between `PARTITION BY` and `GROUP BY`. In the first example, with the absence of the `PARTITION BY` clause, a total of 10 events will be kept across all stock symbols.

```
SELECT stockSymbol, AVG(price)
FROM StockTick RETAIN 10 EVENTS
GROUP BY stockSymbol
```

The average price for each unique set of stock symbol will be computed based on these 10 events. If a stock symbol of `AAA` comes into the window, it may cause a different stock symbol such as `BBB` to leave the window. This would cause the average price for both the `AAA` group as well as the `BBB` group to change.

The second example includes the `PARTITION BY` clause and the `GROUP BY` clause.

```
SELECT stockSymbol, AVG(price)
FROM StockTick RETAIN 10 EVENTS PARTITION BY stockSymbol
GROUP BY stockSymbol
```

In this case, 10 events will be kept for each unique stock symbol. If a stock symbol of `AAA` comes into the window, it would only affect the sub-window associated with that

symbol and not other windows for different stock symbols. Thus, in this case, only the average price of AAA would be affected.

## 2.4.7 Using WITH Clause to Keep Largest/Smallest/Unique Values

The `WITH` clause allows the largest, smallest, and unique property values to be kept in the window. For example, to keep the two highest priced stocks, the following statement would be used:

```
SELECT stockSymbol, price
FROM StockTick RETAIN ALL WITH 2 LARGEST price
```

In the case of time-based windows, the `[n]` qualifier before the `LARGEST` or `SMALLEST` keyword determines how many values are kept. For example, the following statement would keep the two smallest prices seen over one minute:

```
SELECT stockSymbol, price
FROM StockTick RETAIN 1 MINUTE WITH 2 SMALLEST price
```

In the absence of this qualifier, the single largest or smallest value is kept.

The `UNIQUE` qualifier causes the window to include only the most recent among events having the same value for the specified property. For example, the following query would keep only the last stock tick for each unique stock symbol:

```
SELECT *
FROM StockTick RETAIN 1 DAY WITH UNIQUE stockSymbol
```

Prior events of the same property value would be posted as old events by the engine.

## 2.5 MATCHING

Either a `MATCHING` or a `FROM` clause must appear in an EPL statement. The `MATCHING` clause is an alternate mechanism for determining which events are used by the EPL statement. It allows for the detection of a series of one or more events occurring that satisfies a specified pattern. Pattern expressions consist of references to streams separated by logical operators such as `AND`, `OR`, and `FOLLOWED BY` to define the sequence of events that compose the pattern. You may include an optional `RETAIN` clause, as specified in [Section 2.4, "RETAIN,"](#) to define the characteristics of the window containing the matched events. The `MATCHING` clause executes prior to the `WHERE` or `HAVING` clauses.

The `MATCHING` clause syntax is as follows:

```
MATCHING pattern_expression [RETAIN retain_clause]
```

with *pattern\_expression* having the following syntax:

```
[NOT|EVERY] stream_expression
( ( AND | OR | [NOT] FOLLOWED BY ) stream_expression )*
[WITHIN time_interval]
```

You can use the `NOT` operator to detect the absence of an event and the `EVERY` operator to control how pattern matching continues after a match. The *stream\_expression* is a stream source name optionally bound to a variable and filtered by a parenthesized expression:

```
stream_expression: [var_name:=]stream_name [( filter_expression )]
```

Alternatively, a *stream\_expression* may itself be a *pattern\_expression* allowing for arbitrarily complex nesting of expressions:

The *var\_name* is bound to the event object occurring that triggers the match. It may be referenced as any other event property in filter expressions that follow as well as in other clauses such as the `SELECT` and `WHERE` clauses. The *stream\_name* may optionally be followed by a parenthesized expression to filter the matching events of that type. The expression act as a precondition for events to enter the corresponding window and has the same syntax as a `WHERE` clause expression. Previously bound variables may be used within the expression to correlate with already matched events.

The *time\_interval* is a time interval as specified in [Section 2.4.4, "Specifying Time Interval"](#) that follows the optional `WITHIN` keyword to determine how long to wait before giving up on the preceding expression to be met.

In the example below we look for `RFIDEvent` event with a category of "Perishable" followed by an `RFIDError` within 10 seconds whose `id` matches the ID of the matched `RFIDEvent` object.

```
SELECT *
MATCHING a:=RFIDEvent(category="Perishable")
        FOLLOWED BY RFIDError(id=a.id) WITHIN 10 seconds
RETAIN 1 MINUTE
```

The following sections discuss the syntax, semantics, and additional operators available in the `MATCHING` clause to express temporal constraints for pattern matching.

## 2.5.1 FOLLOWED BY Operator

The `FOLLOWED BY` temporal operator matches on the occurrence of several event conditions in a particular order. It specifies that first the left hand expression must turn true and only then will the right hand expression be evaluated for matching events.

For example, the following pattern looks for event A and if encountered, looks for event B:

```
A FOLLOWED BY B
```

This does not mean that event A must immediately be followed by event B. Other events may occur between the event A and the event B and this expression would still evaluate to `true`. If this is not the desired behavior, used the `NOT` operator as described in [Section 2.5.4, "NOT Operator."](#)

## 2.5.2 AND Operator

The `AND` logical operator requires both nested pattern expressions to turn true before the whole expression returns true. In the context of the `MATCHING` clause, the operator matches on the occurrence of several event conditions but not necessarily in a particular order.

For example, the following pattern matches when both event A and event B are found:

```
A AND B
```

The pattern matches on any sequence of A followed by B in either order. In addition, it is not required that a B event immediately follow an A event - other events may appear in between the occurrence of an A event and a B event for this expression to return true.

## 2.5.3 OR Operator

The OR logical operator requires either one of the expressions to turn true before the whole expression returns true. In the context of the MATCHING clause, the operator matches on the occurrence of either of several event conditions but not necessarily in a particular order.

For example, the following pattern matches for either event A or event B:

```
A OR B
```

The following would detect all stock ticks that are either above a certain price or above a certain volume.

```
StockTick(price > 1.0) OR StockTick(volume > 1000)
```

## 2.5.4 NOT Operator

The NOT operator negates the truth value of an expression. In the context of the MATCHING clause, the operator allows the absence of an event condition to be detected.

The following pattern matches only when an event A is encountered followed by event B but only if no event C was encountered before event B.

```
( A FOLLOWED BY B ) AND NOT C
```

## 2.5.5 EVERY Operator

The EVERY operator indicates that the pattern sub-expression should restart when the sub-expression qualified by the EVERY keyword evaluates to true or false. In the absence of the EVERY operator, an implicit EVERY operator is inserted as a qualifier to the first event stream source found in the pattern not occurring within a NOT expression.

The EVERY operator works like a factory for the pattern sub-expression contained within. When the pattern sub-expression within it fires and thus quits checking for events, the EVERY causes the start of a new pattern sub-expression listening for more occurrences of the same event or set of events.

Every time a pattern sub-expression within an EVERY operator turns true the engine starts a new active sub-expression looking for more event(s) or timing conditions that match the pattern sub-expression.

Let's consider an example event sequence as follows:

```
A1 B1 C1 B2 A2 D1 A3 B3 E1 A4 F1 B4
```

**Table 2–1 Example EVERY Operators**

Example	Description
EVERY ( A FOLLOWED BY B )	<p>Detect event A followed by event B. At the time when B occurs the pattern matches, then the pattern matcher restarts and looks for event A again.</p> <p>Matches on B<sub>1</sub> for combination {A<sub>1</sub>, B<sub>1</sub>}.</p> <p>Matches on B<sub>3</sub> for combination {A<sub>2</sub>, B<sub>3</sub>}.</p> <p>Matches on B<sub>4</sub> for combination {A<sub>4</sub>, B<sub>4</sub>}.</p>

**Table 2–1 (Cont.) Example EVERY Operators**

Example	Description
EVERY A FOLLOWED BY B	The pattern fires for every event A followed by an event B. Matches on B <sub>1</sub> for combination {A <sub>1</sub> , B <sub>1</sub> } Matches on B <sub>3</sub> for combination {A <sub>2</sub> , B <sub>3</sub> } and {A <sub>3</sub> , B <sub>3</sub> }. Matches on B <sub>4</sub> for combination {A <sub>4</sub> , B <sub>4</sub> }
EVERY A FOLLOWED BY EVERY B	The pattern fires for every event A followed by every event B, in other words, all combinations of A followed by B. Matches on B <sub>1</sub> for combination {A <sub>1</sub> , B <sub>1</sub> }. Matches on B <sub>2</sub> for combination {A <sub>1</sub> , B <sub>2</sub> }. Matches on B <sub>3</sub> for combination {A <sub>1</sub> , B <sub>3</sub> }, {A <sub>2</sub> , B <sub>3</sub> } and {A <sub>3</sub> , B <sub>3</sub> }. Matches on B <sub>4</sub> for combination {A <sub>1</sub> , B <sub>4</sub> }, {A <sub>2</sub> , B <sub>4</sub> }, {A <sub>3</sub> , B <sub>4</sub> }, and {A <sub>4</sub> , B <sub>4</sub> }

The examples show that it is possible that a pattern fires for multiple combinations of events that match a pattern expression.

Let's consider the EVERY operator in conjunction with a sub-expression that matches three events that follow each other:

```
EVERY (A FOLLOWED BY B FOLLOWED BY C)
```

The pattern first looks for event A. When event A arrives, it looks for event B. After event B arrives, the pattern looks for event C. Finally, when event C arrives the pattern matches. The engine then starts looking for event A again.

Assume that between event B and event C a second event A<sub>2</sub> arrives. The pattern would ignore the A<sub>2</sub> entirely since it's then looking for event C. As observed in the prior example, the EVERY operator restarts the sub-expression A FOLLOWED BY B FOLLOWED BY C only when the sub-expression fires.

In the next statement the every operator applies only to the A event, not the whole sub-expression:

```
EVERY A FOLLOWED BY B FOLLOWED BY C
```

This pattern now matches for any event A that is followed by an event B and then event C, regardless of when the event A arrives. This can often be impractical unless used in combination with the AND NOT syntax or the RETAIN syntax to constrain how long an event remains in the window.

## 2.5.6 WITHIN Operator

The WITHIN qualifier acts like a stopwatch. If the associated pattern expression does not become true within the specified time period it is evaluated by the engine as false. The WITHIN qualifier takes a time period as a parameter as specified in [Section 2.4.4, "Specifying Time Interval."](#)

This pattern fires if an A event arrives within 5 seconds after statement creation.

```
A WITHIN 5 SECONDS
```

This pattern fires for all A events that arrive within 5 second intervals.

This pattern matches for any one A or B event in the next 5 seconds.

```
(A or B) WITHIN 5 SECONDS
```

This pattern matches for any two errors that happen 10 seconds within each other.

```
A(status='ERROR') FOLLOWED BY B(status='ERROR') WITHIN 10 SECONDS
```

This pattern matches when a Status event does not occur within 10 seconds:

```
NOT Status WITHIN 10 SECONDS
```

## 2.5.7 Event Structure for Matched Pattern

The structure of the events produced when a pattern matches is determined by the structure of the union of the variables bound within the `MATCHING` clause. Thus variable bindings must be present in order to retrieve data from the matched events.

For example, given the following pattern:

```
tick:=StockTick FOLLOWED BY news:=News(stockSymbol = tick.stockSymbol)
```

Events that match would have a composite event type with two properties: a tick property with a type of `StockTick` and a news property with a type of `News`.

## 2.6 WHERE

The `WHERE` clause is an optional clause in EPL statements. Using the `WHERE` clause event streams can be joined and events can be filtered. Aggregate functions may not appear in a `WHERE` clause. To filter using aggregate functions, the `HAVING` clause should be used.

```
WHERE aggregate_free_expression
```

Comparison operators `=`, `<`, `>`, `>=`, `<=`, `!=`, `<>`, `IS NULL`, `IS NOT NULL` and logical combinations using `AND` and `OR` are supported in the `WHERE` clause. Some examples are listed below.

```
...WHERE fraud.severity = 5 AND amount > 500
... WHERE (orderItem.orderId IS NULL) OR (orderItem.class != 10)
... WHERE (orderItem.orderId = NULL) OR (orderItem.class <> 10)
... WHERE itemCount / packageCount > 10
```

## 2.7 GROUP BY

The `GROUP BY` clause is optional in EPL statements. The `GROUP BY` clause divides the output of an EPL statement into groups. You can group by one or more event property names, or by the result of computed expressions. When used with aggregate functions, `GROUP BY` retrieves the calculations in each subgroup. You can use `GROUP BY` without aggregate functions, but generally this can produce confusing results.

For example, the below statement returns the total price per symbol for all `StockTickEvents` in the last 30 seconds:

```
SELECT symbol, SUM(price)
FROM StockTickEvent RETAIN 30 SEC
GROUP BY symbol
```

The syntax of the `GROUP BY` clause is:

```
GROUP BY aggregate_free_expression [, aggregate_free_expression] [, ...]
```

EPL places the following restrictions on expressions in the `GROUP BY` clause:

- Expressions in the `GROUP BY` clause cannot contain aggregate functions

- Event properties that are used within aggregate functions in the `SELECT` clause cannot also be used in a `GROUP BY` expression

You can list more than one expression in the `GROUP BY` clause to nest groups. Once the sets are established with `GROUP BY`, the aggregation functions are applied. This statement posts the median volume for all stock tick events in the last 30 seconds grouped by symbol and tick data feed. EPL posts one event for each group to statement update listeners:

```
SELECT symbol, tickDataFeed, MEDIAN(volume)
FROM StockTickEvent RETAIN 30 SECONDS
GROUP BY symbol, tickDataFeed
```

In the statement above the event properties in the select list (`symbol` and `tickDataFeed`) are also listed in the `GROUP BY` clause. The statement thus follows the SQL standard which prescribes that non-aggregated event properties in the select list must match the `GROUP BY` columns.

EPL also supports statements in which one or more event properties in the select list are not listed in the `GROUP BY` clause. The statement below demonstrates this case. It calculates the standard deviation for the last 30 seconds of stock ticks aggregating by symbol and posting for each event the `symbol`, `tickDataFeed` and the standard deviation on price.

```
SELECT symbol, tickDataFeed, STDDEV(price)
FROM StockTickEvent RETAIN 30 SECONDS
GROUP BY symbol
```

The above example still aggregates the price event property based on the symbol, but produces one event per incoming event, not one event per group.

Additionally, EPL supports statements in which one or more event properties in the `GROUP BY` clause are not listed in the select list. This is an example that calculates the mean deviation per symbol and `tickDataFeed` and posts one event per group with symbol and mean deviation of price in the generated events. Since `tickDataFeed` is not in the posted results, this can potentially be confusing.

```
SELECT symbol, AVEDEV(price)
FROM StockTickEvent RETAIN 30 SECONDS
GROUP BY symbol, tickDataFeed
```

Expressions are also allowed in the `GROUP BY` list:

```
SELECT symbol * price, count(*)
FROM StockTickEvent RETAIN 30 SECONDS
GROUP BY symbol * price
```

If the `GROUP BY` expression results in a null value, the null value becomes its own group. All null values are aggregated into the same group. The `COUNT(expression)` aggregate function does not count null values and the `COUNT` returns zero if only null values are encountered.

You can use a `WHERE` clause in a statement with `GROUP BY`. Events that do not satisfy the conditions in the `WHERE` clause are eliminated before any grouping is done. For example, the statement below posts the number of stock ticks in the last 30 seconds with a volume larger than 100, posting one event per group (`symbol`).

```
SELECT symbol, count(*)
FROM StockTickEvent RETAIN 30 SECONDS
WHERE volume > 100
GROUP BY symbol
```



## 2.8 HAVING

The `HAVING` clause is optional in EPL statements. Use the `HAVING` clause to pass or reject events defined by the `GROUP BY` clause. The `HAVING` clause sets conditions for the `GROUP BY` clause in the same way `WHERE` sets conditions for the `SELECT` clause, except the `WHERE` clause cannot include aggregate functions, while `HAVING` often does.

```
HAVING expression
```

This statement is an example of a `HAVING` clause with an aggregate function. It posts the total price per symbol for the last 30 seconds of stock tick events for only those symbols in which the total price exceeds 1000. The `HAVING` clause eliminates all symbols where the total price is equal or less than 1000.

```
SELECT symbol, SUM(price)
FROM StockTickEvent RETAIN 30 SEC
GROUP BY symbol
HAVING SUM(price) > 1000
```

To include more than one condition in the `HAVING` clause combine the conditions with `AND`, `OR` or `NOT`. This is shown in the statement below which selects only groups with a total price greater than 1000 and an average volume less than 500.

```
SELECT symbol, SUM(price), AVG(volume)
FROM StockTickEvent RETAIN 30 SEC
GROUP BY symbol
HAVING SUM(price) > 1000 AND AVG(volume) < 500
```

A statement with the `HAVING` clause should also have a `GROUP BY` clause. If you omit `GROUP BY`, all the events not excluded by the `WHERE` clause return as a single group. In that case `HAVING` acts like a `WHERE` except that `HAVING` can have aggregate functions.

The `HAVING` clause can also be used without `GROUP BY` clause as the below example shows. The example below posts events where the price is less than the current running average price of all stock tick events in the last 30 seconds.

```
SELECT symbol, price, AVG(price)
FROM StockTickEvent RETAIN 30 SEC
HAVING price < AVG(price)
```

### 2.8.1 Interaction With `MATCHING`, `WHERE` and `GROUP BY` Clauses

When an EPL statement includes subqueries, a `MATCHING` clause, `WHERE` conditions, a `GROUP BY` clause, and `HAVING` conditions, the sequence in which each clause executes determines the final result:

1. Any subqueries present in the statement run first. The subqueries act as a filter for events to enter the window of the outer query
2. The event stream's filter conditions in the `MATCHING` clause, if present, dictates which events enter a window. The filter discards any events not meeting filter criteria.
3. The `WHERE` clause excludes events that do not meet its search condition.
4. Aggregate functions in the `SELECT` list calculate summary values for each group.
5. The `HAVING` clause excludes events from the final results that do not meet its search condition.

The following query illustrates the use of filter, WHERE, GROUP BY and HAVING clauses in one statement with a SELECT clause containing an aggregate function.

```
SELECT tickDataFeed, STDDEV(price)
FROM (SELECT * FROM StockTickEvent WHERE symbol='ACME')
RETAIN 10 EVENTS
WHERE volume > 1000
GROUP BY tickDataFeed
HAVING STDDEV(price) > 0.8
```

EPL filters events using the subquery for the event stream `StockTickEvent`. In the example above, only events with symbol `ACME` enter the window over the last 10 events, all other events are simply discarded. The `WHERE` clause removes any events posted into the window (events entering the window and event leaving the window) that do not match the condition of volume greater than 1000. Remaining events are applied to the `STDDEV` standard deviation aggregate function for each tick data feed as specified in the `GROUP BY` clause. Each `tickDataFeed` value generates one event. EPL applies the `HAVING` clause and only lets events pass for `tickDataFeed` groups with a standard deviation of price greater than 0.8.

## 2.9 ORDER BY

The `ORDER BY` clause is optional in EPL. It is used for ordering output events by their properties, or by expressions involving those properties. For example, the following statement batches 1 minute of stock tick events sorting them first by price and then by volume.

```
SELECT symbol
FROM StockTickEvent RETAIN BATCH OF 1 MINUTE
ORDER BY price, volume
```

Here is the syntax for the `ORDER BY` clause:

```
ORDER BY expression [ASC | DESC] [, expression [ASC | DESC] [,...]]
```

EPL places the following restrictions on the expressions in the `ORDER BY` clause:

- All aggregate functions that appear in the `ORDER BY` clause must also appear in the `SELECT` expression.

Otherwise, any kind of expression that can appear in the `SELECT` clause, as well as any alias defined in the `SELECT` clause, is also valid in the `ORDER BY` clause.

## 2.10 OUTPUT

The `OUTPUT` clause is optional in EPL and is used to control or stabilize the rate at which events are output. For example, the following statement batches old and new events and outputs them at the end of every 90 second interval.

```
SELECT *
FROM StockTickEvent RETAIN 5 EVENTS
OUTPUT EVERY 90 SECONDS
```

Here is the syntax for output rate limiting:

```
OUTPUT [ALL | ( (FIRST | LAST) [number] ] EVERY number [EVENTS | time_unit]
```

where

```
time_unit: MIN | MINUTE | MINUTES | SEC | SECOND | SECONDS | MILLISECONDS | MS
```

The `ALL` keyword is the default and specifies that all events in a batch should be output. The batch size can be specified in terms of time or number of events.

The `FIRST` keyword specifies that only the first event in an output batch is to be output. The optional number qualifier allows more than one event to be output. The `FIRST` keyword instructs the engine to output the first matching event(s) as soon as they arrive, and then ignore matching events for the time interval or number of events specified. After the time interval elapsed, or the number of matching events has been reached, the same cycle starts again.

The `LAST` keyword specifies to only output the last event at the end of the given time interval or after the given number of matching events have been accumulated. The optional number qualifier allows more than one event to be output.

The time interval can also be specified in terms of minutes or milliseconds; the following statement is identical to the first one.

```
SELECT *
FROM StockTickEvent RETAIN 5 EVENTS
OUTPUT EVERY 1.5 MINUTES
```

A second way that output can be stabilized is by batching events until a certain number of events have been collected. The next statement only outputs when either 5 (or more) new or 5 (or more) old events have been batched.

```
SELECT *
FROM StockTickEvent RETAIN 30 SECONDS
OUTPUT EVERY 5 EVENTS
```

Additionally, event output can be further modified by the optional `LAST` keyword, which causes output of only the last event(s) to arrive into an output batch. For the example below, the last five events would be output every three minutes.

```
SELECT *
FROM StockTickEvent RETAIN 30 SECONDS
OUTPUT LAST 5 EVERY 3 MINUTES
```

Using the `FIRST` keyword you can be notified at the start of the interval. This allows one to be immediately notified each time a rate falls below a threshold.

```
SELECT *
FROM TickRate RETAIN 30 SECONDS
WHERE rate < 100
OUTPUT FIRST EVERY 60 SECONDS
```

### 2.10.1 Interaction With `GROUP BY` and `HAVING` Clauses

The `OUTPUT` clause interacts in two ways with the `GROUP BY` and `HAVING` clauses. First, in the `OUTPUT EVERY n EVENTS` case, the number `n` refers to the number of events arriving into the `GROUP BY` clause. That is, if the `GROUP BY` clause outputs only 1 event per group, or if the arriving events do not satisfy the `HAVING` clause, then the actual number of events output by the statement could be fewer than `n`.

Second, the `LAST` and `ALL` keywords have special meanings when used in a statement with aggregate functions and the `GROUP BY` clause. The `LAST` keyword specifies that only groups whose aggregate values have been updated with the most recent batch of events should be output. The `ALL` keyword (the default) specifies that the most recent data for all groups seen so far should be output, whether or not these groups' aggregate values have just been updated.

## 2.11 INSERT INTO

The `INSERT INTO` clause is optional in EPL. This clause can be specified to make the results of a statement available as an event stream for use in further statements. The clause can also be used to merge multiple event streams to form a single stream of events.

```
INSERT INTO CombinedEvent
SELECT A.customerId AS custId, A.timestamp - B.timestamp AS latency
FROM EventA A, EventB B RETAIN 30 MIN
WHERE A.txnId = B.txnId
```

The `INSERT INTO` clause in the above statement generates events of type `CombinedEvent`. Each generated `CombinedEvent` event has two event properties named `custId` and `latency`. The events generated by the above statement can be used in further statements. For example, the statement below uses the generated events.

```
SELECT custId, SUM(latency)
FROM CombinedEvent RETAIN 30 MIN
GROUP BY custId
```

The `INSERT INTO` clause can consist of just an event type alias, or of an event type alias and one or more event property names. The syntax for the `INSERT INTO` clause is as follows:

```
INSERT [ISTREAM | RSTREAM] INTO event_type_alias [(prop_name [,prop_name, [...]] ) ]
```

The `ISTREAM` (default) and `RSTREAM` keywords are optional. If neither keyword is specified, the engine supplies the insert stream events generated by the statement to attached update listeners. The insert stream consists of the events entering the respective window(s) or stream(s). If the `RSTREAM` keyword is specified, the engine supplies the remove stream events generated by the statement. The remove stream consists of the events leaving the respective window(s).

The *event\_type\_alias* is an identifier that names the events generated by the engine. The identifier can be used in statements to filter and process events of the given name.

The engine also allows update listeners to be attached to a statement that contain an `INSERT INTO` clause.

To merge event streams, simply use the same *event\_type\_alias* identifier in any EPL statements that you would like to be merged. Make sure to use the same number and names of event properties and that event property types match up.

EPL places the following restrictions on the `INSERT INTO` clause:

- The number of elements in the `SELECT` clause must match the number of elements in the `INSERT INTO` clause if the clause specifies a list of event property names
- If the event type alias has already been defined by a prior statement and the event property names and types do not match, an exception is thrown at statement creation time.

The example statement below shows the alternative form of the `INSERT INTO` clause that explicitly defines the property names to use.

```
INSERT INTO CombinedEvent (custId, latency)
SELECT A.customerId, A.timestamp - B.timestamp
FROM EventA A, EventB B RETAIN 30 MIN
WHERE A.txnId = B.txnId
```

The `RSTREAM` keyword is used to indicate to the engine to generate only remove stream events. This can be useful if we want to trigger actions when events leave a window rather than when events enter a window. The statement below generates `CombinedEvent` events when `EventA` and `EventB` leave the window after 30 minutes.

```
INSERT RSTREAM INTO CombinedEvent
SELECT A.customerId AS custId, A.timestamp - B.timestamp AS latency
FROM EventA A, EventB B RETAIN 30 MIN
WHERE A.txnId = B.txnId
```

## 2.12 Simple and Correlated Subqueries

A subquery is a `SELECT` within another statement. EPL supports subqueries in the `SELECT` clause and in the `WHERE` clause of EPL statements. Subqueries provide an alternative way to perform operations that would otherwise require complex joins. Subqueries can also make statements more readable than complex joins.

EPL supports both simple subqueries as well as correlated subqueries. In a simple subquery, the inner query does not reference any elements (rows) from the outer query. The following example shows a simple subquery within a `SELECT` clause:

```
SELECT assetId,
       (SELECT zone
        FROM ZoneClosed.std:lastevent) AS lastClosed
FROM RFIDEvent
SELECT assetId,
       (SELECT zone
        FROM ZoneClosed RETAIN ALL EVENTS) AS lastClosed
FROM RFIDEvent
```

If the inner query is dependent on the outer query, it is referred to as a correlated subquery, as shown in the following example. In the query, the `WHERE` clause in the inner query involves a stream from the outer query:

```
SELECT *
FROM RfidEvent AS RFID
WHERE 'Dock 1' =
      (SELECT name
       FROM Zones RETAIN ALL EVENTS WITH UNIQUE zoneId
        WHERE zoneId = RFID.zoneId)
```

The preceding example shows a subquery in the `WHERE` clause. The statement selects RFID events in which the zone name matches a string constant based on zone ID. The statement uses the `WITH UNIQUE` subclause in the `RETAIN` clause to guarantee that only the last event per zone ID is held from processing by the subquery.

The following example is a correlated subquery within a `SELECT` clause. In this query, the `SELECT` clause retrieves the zone name by means of a subquery against the `Zones` set of events correlated by zone id:

```
SELECT zoneId,
       (SELECT name
        FROM Zones RETAIN ALL EVENTS WITH UNIQUE zoneId
         WHERE zoneId = RFID.zoneId) AS name
FROM RFIDEvent
```

When a simple or correlated subquery returns multiple rows, Oracle CEP returns a null value as the subquery result. To limit the number of events returned by a subquery, consider using `WITH UNIQUE` or `PARTITION BY` in the `RETAIN` clause.

The `SELECT` clause of a subquery also allows wildcard selects, which return as an event property the underlying event object of the event type as defined in the `FROM` clause. An example:

```
SELECT
  (SELECT *
   FROM MarketData RETAIN 1 EVENT) AS md
MATCHING WITHIN 10 SECONDS
```

The output events of the preceding statement contain the underlying `MarketData` event in a property named `md`. The statement populates the last `MarketData` event into a property named `md` every 10 seconds following the pattern definition, or populates a null value if no `MarketData` event has been encountered so far.

The following restrictions apply to subqueries:

- The subquery stream definition must define a data window or other view to limit subquery results, reducing the number of events held for subquery execution.
- You cannot use aggregation functions in subqueries. Instead, use the `INSERT` into clause to provide aggregation results for use in subqueries
- Subqueries can consist only of a `SELECT` clause, a `FROM` clause, and a `WHERE` clause. The `GROUP BY` and `HAVING` clauses, as well as joins, outer-joins and output rate limiting are not permitted within subqueries.

The performance of your statement that contains one or more subqueries principally depends on two parameters. First, if your subquery correlates one or more columns in the subquery stream with the enclosing statement's streams using equals (=), Oracle CEP automatically builds the appropriate indexes for fast row retrieval based on the key values correlated (joined). The second parameter is the number of rows found in the subquery stream and the complexity of the filter criteria (`WHERE` clause), as each row in the subquery stream must evaluate against the `WHERE` clause filter.

## 2.13 Parameterized Queries

Parameterized queries allow you to put placeholders inside of an EPL query in the form of a question mark. At runtime you bind these placeholders with values and they are then compiled into regular statements. The process is much like the `PreparedStatement` in JDBC.

Use of parameterized queries prevents requiring separate rules to be written for each possible parameter value. For example, the signal trading application has 300 rules that only differ in the value that selects which stock symbol to be matched against. In a real-world application, maintaining 300 separate rules would be a maintenance nightmare, because a change in the rule logic would require an identical change in all 300 rules. Instead, the parameterized query approach allows a developer to put a placeholder in the query which is later bound to a particular stock symbol value. Once bound with values, parameterized queries compile down to regular queries, and so the performance of the queries is not be adversely affected.

To change the parameters associated with a parameterized EPL query at runtime without coding in Java, use the "wlevs.Admin Command-Line Reference" in the *Oracle Complex Event Processing Administrator's Guide*.

### 2.13.1 General Usage

You use question marks in a parameterized EPL query to indicate the location of a placeholder. You can use placeholders in any expression where a constant value is currently allowed; you put the placeholder in the same location as the constant would be. In practice this means that you can specify placeholders only in the `SELECT` and `WHERE` clauses of a query. You cannot use placeholders in the `RETAIN` clause.

The following example shows a parameterized query:

```
SELECT symbol, AVG(price) AS average, ? AS market
FROM StockTick t RETAIN ALL EVENTS
WHERE symbol = ?
```

The example shows how to specify a placeholder in both the `SELECT` and `WHERE` clause. At runtime, the two placeholders are bound with values, such as `NASDAQ` and `ORCL` so that the actual EPL statement that is executed looks like the following:

```
SELECT symbol, AVG(price) AS average, NASDAQ AS market
FROM StockTick t RETAIN ALL EVENTS
WHERE symbol = ORCL
```

### 2.13.2 Using a Parameterized EPL Statement in the Processor Configuration File

If you have configured the EPL rules for a particular processor in its component configuration file, you specify the EPL statement as usual using the `<rule>` element. Specify the placeholders using question marks, as described in [Section 2.13.1, "General Usage."](#)

Then use the `<binding>` element to specify one or more `<params>` elements that correspond to the comma-separated list of values that you want to pass to the parameterized EPL statement at runtime. Each `<params>` element effectively causes a new EPL query to execute with the new parameters. Use the `id` attribute of `<binding>` to reference the particular EPL rule to which the binding applies. Each `<params>` element contains a single set of parameters; the order of the parameters corresponds to the order in which the question marks appear in the parameterized query.

Use the `id` attribute of `<params>` to uniquely identify each individual parameter set; this is so later you can dynamically delete single parameter sets using `JMX` or `wlevs.Admin`.

As with the EPL rules in the configuration file, group the `<binding>` elements together using a parent `<bindings>` element.

The following example shows how to specify a parameterized query and its runtime parameters for the query described in [Section 2.13.1, "General Usage"](#):

```
<n1:config xmlns:n1="http://www.bea.com/ns/wlevs/config/application"
  xmlns:xsi="http://www.w3.org/2001/XMLSchema-instance">
  <processor>
    <name>myProcessor</name>
    <rules>
      <rule id="MarketRule"><![CDATA[
        SELECT symbol, AVG(price) AS average, ? AS market
        FROM StockTick t RETAIN ALL EVENTS
        WHERE symbol = ?
      ]]></rule>
    </rules>
    <bindings>
      <binding id="MarketRule">
```

```

        <params id="nasORCL">NASDAQ,ORCL</params>
        <params id="nyJPM">NYSE,JPM</params>
        <params id="nyWFC">NYSE,WFC</params>
    </binding>
</bindings>
</processor>
</nl:config>

```

In the preceding example, the `MarketRule` EPL query includes two placeholders: one in the `SELECT` clause and another in the `WHERE` clause. The `<binding id="MarketRule">` element specifies the list of parameter sets that will be passed to `MarketRule` at runtime. Each parameter set is specified with a single `<params>` element. Because there are two placeholders in the parameterized query, each `<params>` element specifies two values separated by a comma.

At runtime, the preceding parameterized query effectively breaks down into the following three queries

```

SELECT symbol, AVG(price) AS average, NASDAQ AS market
FROM StockTick t RETAIN ALL EVENTS
WHERE symbol = ORCL
SELECT symbol, AVG(price) AS average, NYSE AS market
FROM StockTick t RETAIN ALL EVENTS
WHERE symbol = JPM
SELECT symbol, AVG(price) AS average, NYSE AS market
FROM StockTick t RETAIN ALL EVENTS
WHERE symbol = WFC

```

### 2.13.3 Programmatically Using a Prepared EPL Statement

If you use the Oracle CEP APIs in your application to create and execute EPL rules, and you want to use parameterized rules, use the `com.bea.wlevs.ede.api.PreparedStatement` interface to create instances of the `com.bea.wlevs.ede.api.BoundStatement` interfaced based on provided parameter values.

Both `PreparedStatement` and `BoundStatement` extend `Statement`, which is the basic object that represents a compiled EPL query. `PreparedStatement` has additional methods to bind parameters to the placeholders in the query, return the number of placeholders in the query, and return an instance of the `BoundStatement` based on a binding id. `BoundStatement` has additional methods for getting the parameter values used to bind the EPL query and getting the actual parameterized query itself.

If you call the `start()` or `stop()` methods on a `PreparedStatement`, Oracle CEP starts or stops *all* of the `BoundStatements` that have been created from the `PreparedStatement`; this is because a parameterized query is not itself executable, only the `BoundStatements` that have been created from it with specific parameter values are actually executable.

See *Oracle Fusion Middleware Java API Reference for Oracle Complex Event Processing* for the full reference documentation on these APIs.

The following sample Java snippet shows how to create a `BoundStatement` using the query described in [Section 2.13.1, "General Usage"](#):

```

String stmtString =
    "select symbol, avg(price) as average, ? as market " +
    "from StockTick t " +
    "retain all events " +
    "where symbol = ?"
;

```



```
processorImpl.createStatement(stmtString);
PreparedStatement preparedStmt =
(PreparedStatement)processorImpl.createStatement(stmtString);
BoundStatement orclBoundStmt = preparedStmt.bind(new String[]
{"NASDAQ", "ORCL"});
```



---

---

## EPL Reference: Operators

This section contains information on the following subjects:

- [Section 3.1, "Overview of EPL Operators"](#)
- [Section 3.2, "Arithmetic Operators"](#)
- [Section 3.3, "Logical and Comparison Operators"](#)
- [Section 3.4, "Concatenation Operators"](#)
- [Section 3.5, "Binary Operators"](#)
- [Section 3.6, "Array Definition Operator"](#)
- [Section 3.7, "List and Range Operators"](#)
- [Section 3.8, "String Operators"](#)
- [Section 3.9, "Temporal Operators"](#)

### 3.1 Overview of EPL Operators

The precedence of arithmetic and logical operators in EPL follows Java standard arithmetic and logical operator precedence.

### 3.2 Arithmetic Operators

The table below outlines the arithmetic operators available.

**Table 3–1** *Arithmetic Operators*

Operator	Description
+, -	As unary operators they denote a positive or negative expression. As binary operators they add or subtract.
*, /	Multiplication and division are binary operators.
%	Modulo binary operator.

### 3.3 Logical and Comparison Operators

The table below outlines the logical and comparison operators available.

**Table 3–2 Logical and Comparison Operators**

Operator	Description
NOT	Returns <code>true</code> if the following condition is false, returns <code>false</code> if it is true.
OR	Returns <code>true</code> if either component condition is true, returns <code>false</code> if both are false
AND	Returns <code>true</code> if both component conditions are true, returns <code>false</code> if either is false
<code>=, !=, &lt;, &gt;, &lt;=, &gt;=, &lt;&gt;</code>	Comparison operators

### 3.4 Concatenation Operators

The table below outlines the concatenation operators available.

**Table 3–3 Concatenation Operators**

Operator	Description
<code>  </code>	Concatenates character strings

### 3.5 Binary Operators

The table below outlines the binary operators available.

**Table 3–4 Binary Operators**

Operator	Description
<code>&amp;</code>	Bitwise AND if both operands are numbers; conditional AND if both operands are Boolean.
<code> </code>	Bitwise OR if both operands are numbers; conditional OR if both operands are Boolean.
<code>^</code>	Bitwise exclusive OR (XOR)

### 3.6 Array Definition Operator

The `{` and `}` curly braces are array definition operators following the Java array initialization syntax. Arrays can be useful to pass to user-defined functions or to select array data in a `SELECT` clause.

Array definitions consist of zero or more expressions within curly braces. Any type of expression is allowed within array definitions including constants, arithmetic expressions or event properties. This is the syntax of an array definition:

```
{ [expression [,expression [,...]] }
```

Consider the next statement that returns an event property named actions. The engine populates the `actions` property as an array of `java.lang.String` values with a length of 2 elements. The first element of the array contains the observation property value and the second element the command property value of `RFIDEvent` events.

```
SELECT {observation, command} AS actions
FROM RFIDEvent RETAIN ALL
```

The engine determines the array type based on the types returned by the expressions in the array definition. For example, if all expressions in the array definition return

integer values then the type of the array is `java.lang.Integer[]`. If the types returned by all expressions are a compatible number types, such as integer and double values, the engine coerces the array element values and returns a suitable type, `java.lang.Double[]` in this example. The type of the array returned is `Object[]` if the types of expressions cannot be coerced or return object values. Null values can also be used in an array definition.

Arrays can come in handy for use as parameters to user-defined functions:

```
SELECT *
FROM RFIDEvent RETAIN ALL
WHERE Filter.myFilter(zone, {1,2,3})
```

## 3.7 List and Range Operators

This section describes the following two operations:

- [Section 3.7.1, "IN Operator"](#)
- [Section 3.7.2, "BETWEEN Operator"](#)

### 3.7.1 IN Operator

The `IN` operator determines if a given value matches any value in a list. The syntax of the operator is:

```
test_expression [NOT] IN (expression [,expression [,...]] )
```

The *test\_expression* is any valid expression. The `IN` keyword is followed by a list of expressions to test for a match. The optional `NOT` keyword specifies that the result of the predicate be negated.

The result of an `IN` expression is of type `Boolean`. If the value of *test\_expression* is equal to any expression from the comma-separated list, the result value is `true`. Otherwise, the result value is `false`. All expressions must be of the same type or a type compatible with *test\_expression*.

The next example shows how the `IN` keyword can be applied to select certain command types of `RFIDEvents`:

```
SELECT *
FROM RFIDEvent RETAIN ALL
WHERE command IN ('OBSERVATION', 'SIGNAL')
```

The statement is equivalent to:

```
SELECT *
FROM RFIDEvent RETAIN ALL
WHERE command = 'OBSERVATION' OR symbol = 'SIGNAL'
```

### 3.7.2 BETWEEN Operator

The `BETWEEN` operator specifies a range to test. The syntax of the operator is:

```
test_expression [NOT] BETWEEN begin_expression AND end_expression
```

The *test\_expression* is any valid expression and is the expression to test for the range being inclusively within the expressions defined by *begin\_expression* and *end\_expression*. The `NOT` keyword specifies that the result of the predicate be negated.

The result of a `BETWEEN` expression is of type `Boolean`. If the value of *test\_expression* is greater than or equal to the value of *begin\_expression* and less than or equal to the value of *end\_expression*, the result is `true`.

The next example shows how the `BETWEEN` keyword can be used to select events with a price between 55 and 60 (inclusive).

```
SELECT *
FROM StockTickEvent RETAIN ALL
WHERE price BETWEEN 55 AND 60
```

The equivalent expression without using the `BETWEEN` keyword is:

```
SELECT *
FROM StockTickEvent RETAIN ALL
WHERE price >= 55 AND price <= 60
```

The *begin\_expression* and *end\_expression* may occur in either order without affecting the query. For example, the following is equivalent to the above example:

```
SELECT *
FROM StockTickEvent RETAIN ALL
WHERE price BETWEEN 60 AND 55
```

## 3.8 String Operators

This section describes the following string operators:

- [Section 3.8.1, "LIKE Operator"](#)
- [Section 3.8.2, "REGEXP Operator"](#)

### 3.8.1 LIKE Operator

The `LIKE` operator provides standard SQL pattern matching. SQL pattern matching allows you to use `_` to match any single character and `%` to match an arbitrary number of characters (including zero characters). In EPL, SQL patterns are case-sensitive by default. The syntax of `LIKE` is:

```
test_expression [NOT] LIKE pattern_expression [ESCAPE string_literal]
```

The *test\_expression* is any valid expression yielding a `String` type or a numeric result. The optional `NOT` keyword specifies that the result of the predicate be negated. The `LIKE` keyword is followed by any valid standard SQL *pattern\_expression* yielding a `String`-typed result. The optional `ESCAPE` keyword signals the escape character used to escape the `_` and `%` values in the pattern.

The result of a `LIKE` expression is of type `Boolean`. If the value of *test\_expression* matches the *pattern\_expression*, the result value is `true`. Otherwise, the result value is `false`. An example for the `LIKE` keyword is shown below.

```
SELECT *
FROM PersonLocationEvent RETAIN ALL
WHERE name LIKE '%Jack%'
```

In this example the `WHERE` clause matches events where the `suffix` property is a single `_` character.

```
SELECT *
FROM PersonLocationEvent RETAIN ALL
WHERE suffix LIKE '!_' ESCAPE '!'
```

### 3.8.2 REGEXP Operator

The REGEXP operator is a form of pattern matching based on regular expressions implemented through the Java `java.util.regex` package. The syntax of REGEXP is:

```
test_expression [NOT] REGEXP pattern_expression
```

The *test\_expression* is any valid expression yielding a String type or a numeric result. The optional NOT keyword specifies that the result of the predicate be negated. The REGEXP keyword is followed by any valid regular expression *pattern\_expression* yielding a String-typed result.

The result of a REGEXP expression is of type Boolean. If the value of *test\_expression* matches the regular expression *pattern\_expression*, the result value is true. Otherwise, the result value is false.

An example for the REGEXP operator is below.

```
SELECT *
FROM PersonLocationEvent RETAIN ALL
WHERE name REGEXP '*Jack*'
```

## 3.9 Temporal Operators

This section describes the following temporal operations:

- [Section 3.9.1, "FOLLOWED BY Operator"](#)
- [Section 3.9.2, "WITHIN Operator"](#)
- [Section 3.9.3, "EVERY Operator"](#)

### 3.9.1 FOLLOWED BY Operator

The FOLLOWED BY operator specifies that first the left hand expression must turn true and only then is the right hand expression evaluated for matching events.

For example, the following pattern looks for event A and if encountered, looks for event B:

```
A FOLLOWED BY B
```

This does not mean that event A must *immediately* be followed by event B. Other events may occur between the event A and the event B and this expression would still evaluate to true. If this is not the desired behavior, the NOT operator can be used.

### 3.9.2 WITHIN Operator

The WITHIN qualifier acts like a stopwatch. If the associated pattern expression does not become true within the specified time period it is evaluated by the engine as false. The WITHIN qualifier takes a time period as a parameter as specified in [Section 2.4.4, "Specifying Time Interval."](#)

This pattern fires if an A event arrives within 5 seconds after statement creation.

```
A WITHIN 5 seconds
```

This pattern fires for all A events that arrive within 5 second intervals.

### 3.9.3 EVERY Operator

The `EVERY` operator indicates that the pattern sub-expression should restart when the sub-expression qualified by the `EVERY` keyword evaluates to true or false. In the absence of the `EVERY` operator, an implicit `EVERY` operator is inserted as a qualifier to the first event stream source found in the pattern not occurring within a `NOT` expression.

The `EVERY` operator works like a factory for the pattern sub-expression contained within. When the pattern sub-expression within it fires and thus quits checking for events, the `EVERY` causes the start of a new pattern sub-expression listening for more occurrences of the same event or set of events.

Every time a pattern sub-expression within an `EVERY` operator turns true the engine starts a new active sub-expression looking for more event(s) or timing conditions that match the pattern sub-expression.

This pattern fires when an A event is followed by a B event and continues attempting to match again after the B event:

```
EVERY (A FOLLOWED BY B)
```

This pattern also fires when an A event is followed by a B event, but continues attempting to match again after the A event:

```
EVERY A FOLLOWED BY B
```

The `EVERY` in this pattern is optional, since it would implicitly be placed here if it was absent.



---



---

## EPL Reference: Functions

This section contains information on the following subjects:

- [Section 4.1, "Single-row Functions"](#)
- [Section 4.2, "Aggregate functions"](#)
- [Section 4.3, "User-Defined functions"](#)

### 4.1 Single-row Functions

Single-row functions return a single value for every single result row generated by your statement. These functions can appear anywhere where expressions are allowed.

EPL allows static Java library methods as single-row functions, and also features built-in single-row functions.

EPL auto-imports the following Java library packages:

- `java.lang.*`
- `java.math.*`
- `java.text.*`
- `java.util.*`

Thus Java static library methods can be used in all expressions as shown in below example:

```
SELECT symbol, Math.round(volume/1000)
FROM StockTickEvent RETAIN 30 SECONDS
```

Other arbitrary Java classes may also be used, however their names must be fully qualified or configured to be imported. For more information, see [Section 4.3, "User-Defined functions."](#)

The table below outlines the built-in single-row functions available.

**Table 4–1 Built-In Single-Row Functions**

Single-row Function	Result	See
<b>MAX</b> (expression, expression [, expression [...]])	Returns the highest numeric value among the two or more comma-separated expressions.	<a href="#">Section 4.1.1, "The MIN and MAX Functions"</a>
<b>MIN</b> (expression, expression [, expression [...]])	Returns the lowest numeric value among the two or more comma-separated expressions.	<a href="#">Section 4.1.1, "The MIN and MAX Functions"</a>

**Table 4–1 (Cont.) Built-In Single-Row Functions**

Single-row Function	Result	See
<b>COALESCE</b> (expression, expression [, expression [, ...]])	Returns the first non-null value in the list, or null if there are no non-null values.	<a href="#">Section 4.1.2, "The COALESCE Function"</a>
<b>CASE</b> value WHEN compare_value THEN result [WHEN compare_value THEN result ...] [ELSE result] END	Returns result where the first value equals <i>compare_value</i> .	<a href="#">Section 4.1.3, "The CASE Control Flow Function"</a>
<b>CASE</b> value WHEN condition THEN result [WHEN condition THEN result ...] [ELSE result] END	Returns the result for the first condition that is true.	<a href="#">Section 4.1.3, "The CASE Control Flow Function"</a>
<b>PREV</b> (expression, event_property)	Returns a property value of a previous event, relative to the event order within a data window.	<a href="#">Section 4.1.4, "The PREV Function"</a>
<b>PRIOR</b> (integer, event_property)	Returns a property value of a prior event, relative to the natural order of arrival of events	<a href="#">Section 4.1.5, "The PRIOR Function"</a>
SELECT CASE WHEN <b>INSTANCEOF</b> (item, com.mycompany.Service) THEN serviceName? WHEN <b>INSTANCEOF</b> (item, com.mycompany.Product) THEN productName? END FROM OrderEvent	Returns a boolean value indicating whether the type of value returned by the expression is one of the given types	<a href="#">Section 4.1.6, "The INSTANCEOF Function"</a>
SELECT <b>CAST</b> (item.price?, double) FROM OrderEvent	Casts the return type of an expression to a designated type.	<a href="#">Section 4.1.7, "The CAST Function"</a>
SELECT <b>EXISTS</b> (item.serviceName?) FROM OrderEvent	Returns a boolean value indicating whether the dynamic property, provided as a parameter to the function, exists on the event.	<a href="#">Section 4.1.8, "The EXISTS Function"</a>

You may also create user-defined single-row functions. See [Section 4.3, "User-Defined functions"](#).

### 4.1.1 The MIN and MAX Functions

The **MIN** and **MAX** functions take two or more expression parameters. The **MIN** function returns the lowest numeric value among these comma-separated expressions, while the **MAX** function returns the highest numeric value. The return type is the compatible aggregated type of all return values.

The next example shows the **MAX** function that has a `Double` return type and returns the value `1.1`.

```
SELECT MAX(1, 1.1, 2 * 0.5)
FROM ...
```

The MIN function returns the lowest value. The statement below uses the function to determine the smaller of two timestamp values.

```
SELECT symbol, MIN(ticks.timestamp, news.timestamp) AS minT
FROM StockTickEvent AS ticks, NewsEvent AS news RETAIN 30 SECONDS
WHERE ticks.symbol = news.symbol
```

The MIN and MAX functions are also available as aggregate functions. See [Section 4.2, "Aggregate functions"](#) for a description of this usage.

## 4.1.2 The COALESCE Function

The result of the COALESCE function is the first expression in a list of expressions that returns a non-null value. The return type is the compatible aggregated type of all return values.

This example returns a String type result with a value of foo.

```
SELECT COALESCE(NULL, 'foo')
FROM ...
```

## 4.1.3 The CASE Control Flow Function

The CASE control flow function has two versions. The first version takes a value and a list of compare values to compare against, and returns the result where the first value equals the compare value. The second version takes a list of conditions and returns the result for the first condition that is true.

The return type of a CASE expression is the compatible aggregated type of all return values.

The example below shows the first version of a CASE statement. It has a String return type and returns the value one.

```
SELECT CASE 1 WHEN 1 THEN 'one' WHEN 2 THEN 'two' ELSE 'more' END
FROM ...
```

The second version of the CASE function takes a list of conditions. The next example has a Boolean return type and returns the Boolean value true.

```
SELECT CASE WHEN 1>0 THEN true ELSE false END
FROM ...
```

## 4.1.4 The PREV Function

The PREV function returns the property value of a previous event. The first parameter denotes the *i*<sup>th</sup> previous event in the order established by the data window. The second parameter is a property name for which the function returns the value for the previous event.

This example selects the value of the price property of the second previous event from the current Trade event.

```
SELECT PREV(2, price)
FROM Trade RETAIN 10 EVENTS
```

Because the PREV function takes the order established by the data window into account, the function works well with sorted windows. In the following example the statement selects the symbol of the three Trade events that had the largest, second-largest and third-largest volume.

```
SELECT PREV(0, symbol), PREV(1, symbol), PREV(2, symbol)
```

```
FROM Trade RETAIN 10 EVENTS WITH LARGEST volume
```

The  $i^{\text{th}}$  previous event parameter can also be an expression returning an Integer type value. The next statement joins the Trade data window with a RankSelectionEvent event that provides a rank property used to look up a certain position in the sorted Trade data window:

```
SELECT PREV(rank, symbol)
FROM Trade, RankSelectionEvent RETAIN 10 EVENTS WITH LARGEST volume
```

The PREV function returns a NULL value if the data window does not currently hold the  $i^{\text{th}}$  previous event. The example below illustrates this using a time batch window. Here the PREV function returns a null value for any events in which the previous event is not in the same batch of events. The PRIOR function as discussed below can be used if a null value is not the desired result.

```
SELECT PREV(1, symbol)
FROM Trade RETAIN BATCH OF 1 MINUTE
```

#### 4.1.4.1 Previous Event Per Group

The combination of the PREV function and the PARTITION BY clause returns the property value for a previous event in the given group.

For example, assume we want to obtain the price of the previous event of the same symbol as the current event.

The statement that follows solves this problem. It partitions the window on the symbol property over a time window of one minute. As a result, when the engine encounters a new symbol value that it hasn't seen before, it creates a new window specifically to hold events for that symbol. Consequently, the PREV function returns the previous event within the respective time window for that event's symbol value.

```
SELECT PREV(1, price) AS prevPrice
FROM Trade RETAIN 1 MIN PARTITION BY symbol
```

#### 4.1.4.2 Restrictions

The following restrictions apply to the PREV functions and its results:

- The function always returns a null value for remove stream (old data) events.
- The function may only be used on streams that are constrained by a RETAIN clause.

### 4.1.5 The PRIOR Function

The PRIOR function returns the property value of a prior event. The first parameter is an integer value that denotes the  $i^{\text{th}}$  prior event in the natural order of arrival. The second parameter is a property name for which the function returns the value for the prior event.

This example selects the value of the price property of the second prior event to the current Trade event.

```
SELECT PRIOR(2, price)
FROM Trade RETAIN ALL
```

The PRIOR function can be used on any event stream or view and does not require a stream to be constrained by a RETAIN clause as with the PREV function. The function operates based on the order of arrival of events in the event stream that provides the events.

The next statement uses a length batch window to compute an average volume for every 3 Trade events, posting results every 3 events. The `SELECT` clause employs the `PRIOR` function to select the current average and the average before the current average:

```
SELECT AVG(volume) AS avgVolume, AVG(PRIOR(3, volume))
FROM Trade RETAIN BATCH OF 3 EVENTS
```

#### 4.1.5.1 Comparison to the `PREV` Function

The `PRIOR` function is similar to the `PREV` function. The key differences between the two functions are as follows:

- The `PREV` function returns previous events in the order provided by the window, while the `PRIOR` function returns prior events in the order of arrival in the stream.
- The `PREV` function requires a `RETAIN` clause while the `PRIOR` function does not.
- The `PREV` function returns the previous event taking into account any grouping. The `PRIOR` function returns prior events regardless of any grouping.
- The `PREV` function returns a null value for remove stream events, i.e. for events leaving a data window. The `PRIOR` function does not have this restriction.

#### 4.1.6 The `INSTANCEOF` Function

The `INSTANCEOF` function returns a boolean value indicating whether the type of value returned by the expression is one of the given types. The first parameter to the `INSTANCEOF` function is an expression to evaluate. The second and subsequent parameters are Java type names.

The `INSTANCEOF` function determines the return type of the expression at runtime by evaluating the expression, and compares the type of object returned by the expression to the defined types. If the type of object returned by the expression matches any of the given types, the function returns true. If the expression returned null or a type that does not match any of the given types, the function returns false.

The `INSTANCEOF` function is often used in conjunction with dynamic (unchecked) properties. Dynamic properties are properties whose type is not known at compile type.

The following example uses the `INSTANCEOF` function to select different properties based on the type:

```
SELECT
  CASE
    WHEN INSTANCEOF(item, com.mycompany.Service) THEN serviceName?
    WHEN INSTANCEOF(item, com.mycompany.Product) THEN productName?
  END
FROM OrderEvent
```

The `INSTANCEOF` function returns false if the expression tested by `INSTANCEOF` returned null.

Valid parameters for the type parameter are:

- Any of the Java built-in types: `int`, `long`, `byte`, `short`, `char`, `double`, `float`, `string`, where `string` is a short notation for `java.lang.String`. The type name is not case-sensitive. For example, the following function tests if the dynamic price property is either of type `float` or type `double`:

```
INSTANCEOF(price?, double, float)
```

- The fully-qualified class name of the class to test, for example:

```
INSTANCEOF (product, org.myproducer.Product)
```

Valid parameters for the type parameter list are:

The `INSTANCEOF` function considers an event class's superclasses as well as all the directly or indirectly-implemented interfaces by superclasses.

### 4.1.7 The CAST Function

The `CAST` function casts the return type of an expression to a designated type. The function accepts two parameters: the first parameter is the property name or expression that returns the value to be casted and the second parameter is the type to cast to.

Valid parameters for the second (type) parameter are:

- Any of the Java built-in types: `int`, `long`, `byte`, `short`, `char`, `double`, `float`, `string`, where `string` is a short notation for `java.lang.String`. The type name is not case-sensitive. For example:

```
cast(price, double)
```

- The fully-qualified class name of the class to cast to, for example:

```
cast(product, org.myproducer.Product)
```

The `CAST` function is often used to provide a type for dynamic (unchecked) properties. Dynamic properties are properties whose type is not known at compile type. These properties are always of type `java.lang.Object`.

The following example shows how to use the `CAST` function to cast the `price` dynamic property of an `item` in the `OrderEvent` to a `double` value.

```
SELECT CAST(item.price?, double)
FROM OrderEvent
```

The `CAST` function returns a null value if the expression result cannot be casted to the desired type, or if the expression result itself is null.

The `CAST` function adheres to the following type conversion rules:

- For all numeric types, the `CAST` function utilizes `java.lang.Number` to convert numeric types, if required.
- For casts to `string` or `java.lang.String`, the `CAST` function calls `toString` on the expression result.
- For casts to other objects, including application objects, the `CAST` function considers a Java class's superclasses as well as all directly or indirectly-implemented interfaces by superclasses.

### 4.1.8 The EXISTS Function

The `EXISTS` function returns a boolean value indicating whether the dynamic property, provided as a parameter to the function, exists on the event. The `EXISTS` function accepts a single dynamic property name as its only parameter.

Use the `EXISTS` function with dynamic (unchecked) properties. Dynamic properties are properties whose type is not known at compile type. Dynamic properties return a null value if the dynamic property does not exist on an event, or if the dynamic property exists but the value of the dynamic property is null.

The following example of using the `EXISTS` function returns true if the `item` property contains an object that has a `serviceName` property. It returns false if the `item` property is null, or if the `item` property does not contain an object that has a property named `serviceName`:

```
SELECT EXISTS(item.serviceName?)
FROM OrderEvent
```

## 4.2 Aggregate functions

The aggregate functions are `SUM`, `AVG`, `COUNT`, `MAX`, `MIN`, `MEDIAN`, `STDDEV`, `AVEDEV`. You can use aggregate functions to calculate and summarize data from event properties. For example, to find out the total price for all stock tick events in the last 30 seconds:

```
SELECT SUM(price)
FROM StockTickEvent RETAIN 30 SECONDS
```

Here is the syntax for aggregate functions:

```
aggregate_function( [ALL | DISTINCT] expression )
```

You can apply aggregate functions to all events in an event stream window or other view, or to one or more groups of events. From each set of events to which an aggregate function is applied, EPL generates a single value.

The expression is usually an event property name. However it can also be a constant, function, or any combination of event property names, constants, and functions connected by arithmetic operators.

For example, to find out the average price for all stock tick events in the last 30 seconds if the price was doubled:

```
SELECT AVG(price * 2)
FROM StockTickEvent RETAIN 30 SECONDS
```

You can use the optional keyword `DISTINCT` with all aggregate functions to eliminate duplicate values before the aggregate function is applied. The optional keyword `ALL` which performs the operation on all events is the default.

The `MIN` and `MAX` aggregate functions are also available as single row functions. See [Section 4.1.1, "The MIN and MAX Functions"](#) for a description of this usage.

The syntax of the aggregation functions and the results they produce are shown in table below.

**Table 4–2 Aggregate Functions**

Aggregate Function	Result
<code>SUM</code> ( [ALL DISTINCT] <i>expression</i> )	Totals the (distinct) values in the <i>expression</i> , returning a value of long, double, float or integer type depending on the expression.
<code>AVG</code> ( [ALL DISTINCT] <i>expression</i> )	Average of the (distinct) values in the <i>expression</i> , returning a value of double type.
<code>COUNT</code> ( [ALL DISTINCT] <i>expression</i> )	Number of the (distinct) non-null values in the <i>expression</i> , returning a value of long type.
<code>COUNT</code> ( * )	Number of events, returning a value of long type.
<code>MAX</code> ( [ALL DISTINCT] <i>expression</i> )	Highest (distinct) value in the <i>expression</i> , returning a value of the same type as the expression itself returns.

**Table 4–2 (Cont.) Aggregate Functions**

Aggregate Function	Result
MIN([ALL DISTINCT] expression)	Lowest (distinct) value in the <i>expression</i> , returning a value of the same type as the expression itself returns.
MEDIAN([ALL DISTINCT] expression)	Median (distinct) value in the <i>expression</i> , returning a value of double type.
STDDEV([ALL DISTINCT] expression)	Standard deviation of the (distinct) values in the <i>expression</i> , returning a value of double type.  Oracle CEP uses a common measure called <i>sample standard deviation</i> when internally implementing STDDEV, rather than the precise mathematical definition. The definition used by Oracle CEP for STDDEV is as follows: $\text{stddev}(x) = (1/(N-1) * \text{SUM}\{i=1 \dots n\}(x_i - \text{xavg}) ) ^ (1/2)$
AVEDEV([ALL DISTINCT] expression)	Mean deviation of the (distinct) values in the <i>expression</i> , returning a value of double type.  Oracle CEP uses the following definition for AVEDEV: $\text{avedev}(x) = 1/n * \text{SUM}\{i=1 \dots n\} (x_i ? \text{xavg})$
TREND(expression)	Number of consecutive up ticks (as positive number), down ticks (as negative number), or no change (as zero) for <i>expression</i> .

You can use aggregation functions in a SELECT clause and in a HAVING clause. You cannot use aggregate functions in a WHERE clause, but you can use the WHERE clause to restrict the events to which the aggregate is applied. The next query computes the average and sum of the price of stock tick events for the symbol ACME only, for the last 10 stock tick events regardless of their symbol.

```
SELECT 'ACME stats' AS title, AVG(price) AS avgPrice, SUM(price) AS sumPrice
FROM StockTickEvent RETAIN 10 EVENTS
WHERE symbol='ACME'
```

In the preceding example the length window of 10 elements is not affected by the WHERE clause, in other words, all events enter and leave the length window regardless of their symbol. If we only care about the last 10 ACME events, we need to add a MATCHING clause as shown below.

```
SELECT 'ACME stats' AS title, AVG(price) AS avgPrice, SUM(price) AS sumPrice
FROM (SELECT * FROM StockTickEvent WHERE symbol='ACME')
RETAIN 10 EVENT
```

You can use aggregate functions with any type of event property or expression, with the following restriction:

- You can use SUM, AVG, MEDIAN, STDDEV, AVEDEV with numeric event properties only

EPL ignores any null values returned by the event property or expression on which the aggregate function is operating, except for the COUNT (\*) function, which counts null values as well. All aggregate functions return null if the data set contains no events, or if all events in the data set contain only null values for the aggregated expression.

You may also create an aggregate user-defined function. For more information, see [Section 4.3, "User-Defined functions"](#).

## 4.3 User-Defined functions

A user-defined function can be invoked anywhere as an expression itself or within an expression. The function must simply be a public static method that the class loader



---

can resolve at statement creation time. The engine resolves the function reference at statement creation time and verifies parameter types.

---

**Caution:** Only idempotent user-defined functions in EPL queries are allowed. That is, multiple invocations of the user-defined function does not change the result.

---

The example below assumes a class `MyClass` that exposes a public static method `myFunction` accepting two parameters, and returning a numeric type such as `double`.

```
SELECT 3 * MyClass.myFunction(price, volume) as myValue
FROM StockTick RETAIN 30 SECONDS
```

User-defined functions also take array parameters as this example shows. [Section 3.6, "Array Definition Operator"](#) outlines in more detail the types of arrays produced.

```
SELECT *
FROM RFIDEvent RETAIN 10 MINUTES
WHERE com.mycompany.rfid.MyChecker.isInZone(zone, {10, 20, 30})
```

Oracle CEP supports both single-row and aggregate user-defined functions.

For more information, see "wlevs:function" in the *Oracle Complex Event Processing Developer's Guide for Eclipse*.



---

---

## Programmatic Interface to EPL

This section contains information on the following subjects:

- [Section 5.1, "Java Programming Interfaces"](#)

### 5.1 Java Programming Interfaces

The Java programmatic interface for the EPL is rooted at the `com.bea.wlevs.ede.api.Processor` interface. This interface provides methods to load, compile, start, stop, and retrieve EPL statements.

EPL statements are loaded and compiled individually through the following method:

```
Statement createStatement(String query) throws StatementException;
```

If the query fails to compile, a `StatementException` will be thrown. Alternatively, multiple statements may be loaded from a URL using the following method:

```
List<Statement> loadStatements (URL location) throws MultiStatementException;
```

If the queries fail to compile, a `MultiStatementException` will be thrown. The structure of the rules file is explained in "Configuring EPL Processors" in the *Oracle Complex Event Processing Developer's Guide for Eclipse*. Individual queries compiled through the `createStatement` are not persisted and have no effect on the rule files located at the URL location.

The `com.bea.wlevs.ede.api.Statement` interface allows event sinks to be attached to an EPL statement using the following method:

```
void addEventSink (EventSink listener);
```

The engine calls the following method on the `com.bea.wlevs.ede.api.EventSink` interface when events are added to the output window as a result of executing the statement:

```
void onEvent (List newEvents);
```

For more information, see the complete *Oracle Fusion Middleware Java API Reference for Oracle Complex Event Processing*.



## A

---

about, 2-20  
aggregate functions  
  about, 4-7  
  AVEDEV(ALL | DISTINCT), 4-8  
  AVG(ALL | DISTINCT), 4-7  
  COUNT(\*), 4-7  
  COUNT(ALL | DISTINCT), 4-7  
  MAX(ALL | DISTINCT), 4-7  
  MEDIAN(ALL | DISTINCT), 4-8  
  MIN(ALL | DISTINCT), 4-8  
  STDDEV(ALL | DISTINCT), 4-8  
  SUM(ALL | DISTINCT), 4-7  
  TREND(expression), 4-8  
aggregation, 1-14  
AND operator  
  about, 2-12  
API, 5-1  
arithmetic operators, 3-1  
array definition operators, 3-2  
AVEDEV(ALL | DISTINCT) aggregate function  
  about, 4-8  
AVG(ALL | DISTINCT) aggregate function  
  about, 4-7

## B

---

BASED ON clause  
  about, 2-10  
batched windows  
  about, 1-11  
  row-based, 1-12  
  time-based, 1-11  
BETWEEN operator  
  about, 3-3  
binary operators, 3-2

## C

---

CASE single-row function  
  about, 4-3  
CAST single-row function  
  about, 4-6  
clauses  
  about, 2-1

BASED ON, 2-10  
correlated subqueries, 2-21  
FROM, 2-3  
GROUP BY, 2-15  
HAVING, 2-17  
INSERT INTO, 1-2, 2-7, 2-20  
MATCHING, 1-2, 2-11  
ORDER BY, 2-18  
OUTPUT, 1-2, 2-18  
parameterized queries, 2-22, 2-23  
PARTITION BY, 2-10  
RETAIN, 2-8  
RETAINING, 1-2  
SELECT, 2-1  
simple subqueries, 2-21  
WHERE, 1-13, 2-15  
WITH, 2-11  
COALESCE single-row function  
  about, 4-3  
comparison operators, 2-15, 3-1  
comparison to SQL, 1-1  
concatenation operators, 3-2  
correlated subqueries, 2-21  
COUNT(\*) aggregate function  
  about, 4-7  
COUNT(ALL | DISTINCT) aggregate function  
  about, 4-7

## D

---

datatypes  
  enum, 1-6  
  evaluating with functions, 1-6  
  other, 1-6  
  unsupported, 1-6  
dynamic indexed event properties, 1-5  
dynamic mapped event properties, 1-5  
dynamic nested event properties, 1-5  
dynamic simple event properties, 1-5

## E

---

enum datatypes, 1-6  
EPL  
  API, 5-1  
EPL statements

- prepared, 2-24
- event objects, 1-2
- Event Processing Language. *See* EPL
- event properties
  - about, 1-3
  - aliases, 2-2
  - dynamic, 1-4
  - dynamic indexed, 1-5
  - dynamic mapped, 1-5
  - dynamic nested, 1-5
  - dynamic simple, 1-5
  - indexed, 1-3
  - mapped, 1-3
  - nested, 1-3
  - other, 1-6
  - SELECT clause, 2-2
  - simple, 1-3
- event representation
  - about, 1-1, 1-2
  - event objects, 1-2
  - Map events, 1-3
  - POJO, 1-3
  - properties, 1-3, 1-4
- event sinks
  - about, 1-7
  - ISTREAM events, 1-7
  - RSTREAM events, 1-7
- event streams, 1-8
- EVERY operator
  - about, 2-13, 3-6
- EXISTS single-row function
  - about, 4-6

## F

---

- FOLLOWED BY operator
  - about, 2-12, 3-5
- FROM clause
  - about, 2-3
  - joins
    - inner, 2-5
    - outer, 2-5
  - parameterized SQL queries, 2-6
  - subquery expressions, 2-6
- functions
  - aggregate, 4-7
  - single-row, 4-1
  - user-defined, 4-8

## G

---

- GROUP BY clause
  - about, 2-15
  - HAVING clause, 2-17
  - OUTPUT clause, 2-19

## H

---

- HAVING clause
  - about, 2-17
  - GROUP BY clause, 2-17

- MATCHING clause, 2-17
- OUTPUT clause, 2-19
- WHERE clause, 2-17

## I

---

- IN operator
  - about, 3-3
- indexed event properties, 1-3
- INSERT INTO clause, 2-20
  - about, 1-2
  - parameterized SQL queries, 2-7
- INSTANCE OF single-row function
  - about, 4-5
- IS NOT NULL operator, 2-15
- IS NULL operator, 2-15
- ISTREAM
  - SELECT clause, 2-3
- ISTREAM events, 1-7

## J

---

- joins
  - inner, 2-5
  - outer, 2-5

## L

---

- LARGEST qualifier, 2-11
- LIKE operator
  - about, 3-4
- list operators, 3-3
- logical operators, 3-1

## M

---

- Map events, 1-3
- mapped event properties, 1-3
- MATCHING clause
  - about, 1-2, 2-11
  - AND operator, 2-12
  - event structure for matched pattern, 2-15
  - EVERY operator, 2-13
  - FOLLOWED BY operator, 2-12
  - HAVING clause, 2-17
  - matched pattern, 2-15
  - NOT operator, 2-13
  - OR operator, 2-13
  - WITHIN operator, 2-14
- MAX single-row function
  - about, 4-2
- MAX(ALL | DISTINCT) aggregate function
  - about, 4-7
- MEDIAN(ALL | DISTINCT) aggregate function
  - about, 4-8
- MIN single-row function
  - about, 4-2
- MIN(ALL | DISTINCT) aggregate function
  - about, 4-8

## N

---

nested event properties, 1-3  
NOT operator  
    about, 2-13

## O

---

operators  
    about, 3-1  
    AND, 2-12  
    arithmetic, 3-1  
    array definition, 3-2  
    BETWEEN, 3-3  
    binary, 3-2  
    comparison, 2-15, 3-1  
    concatenation, 3-2  
    EVERY, 2-13, 3-6  
    FOLLOWED BY, 2-12, 3-5  
    IN, 3-3  
    IS NOT NULL, 2-15  
    IS NULL, 2-15  
    LIKE, 3-4  
    list, 3-3  
    logical, 3-1  
    NOT, 2-13  
    OR, 2-13  
    range, 3-3  
    REGEXP, 3-5  
    string, 3-4  
    temporal, 3-5  
    WITHIN, 2-14, 3-5  
OR operator  
    about, 2-13  
ORDER BY clause  
    about, 2-18  
OUTPUT clause  
    about, 1-2, 2-18  
    GROUP BY clause, 2-19  
    HAVING clause, 2-19

## P

---

parameterized SQL queries, 2-6  
parameterized queries  
    about, 2-22, 2-23  
    prepared EPL statement, 2-24  
    processor component configuration file, 2-23  
PARTITION BY clause  
    about, 2-10  
Plain Old Java Object. *See* POJO  
POJO  
    event representation, 1-3  
PREV single-row function  
    about, 4-3  
    per group, 4-4  
    PRIOR single-row function, 4-5  
    restrictions, 4-4  
PRIOR single-row function  
    about, 4-4  
    PREV single-row function, 4-5

processing model  
    about, 1-1, 1-8  
    aggregation, 1-14  
    batched windows  
        about, 1-11  
        row-based, 1-12  
        time-based, 1-11  
    event streams, 1-8  
    sliding windows  
        about, 1-9  
        row-based, 1-9  
        time-based, 1-10  
    subqueries, 1-13  
    use cases, 1-15  
programmatic interface, 1-1

## Q

---

qualifiers  
    LARGEST, 2-11  
    SMALLEST, 2-11  
    UNIQUE, 2-11  
queries  
    parameterized, 2-22, 2-23

## R

---

range operators, 3-3  
REGEXP operator  
    about, 3-5  
RETAIN clause  
    about, 2-8  
    BASED ON clause, 2-10  
    batched and sliding windows, 2-9  
    keeping all events, 2-8  
    PARTITION BY clause, 2-10  
    property name, 2-10  
    sliding window size, 2-8  
    time interval, 2-9  
    WITH clause, 2-11  
RETAINING clause  
    about, 1-2  
RSTREAM  
    SELECT clause, 2-3  
RSTREAM events, 1-7

## S

---

SELECT clause  
    about, 2-1  
    aliasing event properties, 2-2  
    choosing all event properties, 2-2  
    choosing event properties, 2-2  
    expressions, 2-2  
    ISTREAM, 2-3  
    RSTREAM, 2-3  
    selecting new events, 2-3  
    selecting old events, 2-3  
simple event properties, 1-3  
simple subqueries, 2-21  
single-row functions

- about, 4-1
- CASE, 4-3
- CAST, 4-6
- COALESCE, 4-3
- EXISTS, 4-6
- INSTANCE OF, 4-5
- MAX, 4-2
- MIN, 4-2
- PREV, 4-3
- PRIOR, 4-4, 4-5
- sliding windows
  - about, 1-9
  - RETAIN clause, 2-8
  - row-based, 1-9
  - size, 2-8
  - time-based, 1-10
- SMALLEST qualifier, 2-11
- SQL comparison, 1-1
- SQL queries, 2-6
- STDDEV(ALL | DISTINCT) aggregate function
  - about, 4-8
- streams, 1-8
- string operators, 3-4
- sub-queries, 1-13
- subqueries
  - correlated, 2-21
  - FROM clause, 2-6
  - paramaterized SQL queries, 2-6
  - simple, 2-21
- SUM(ALL | DISTINCT) aggregate function
  - about, 4-7

## T

---

- temporal operators, 3-5
- TREND(expression) aggregate function
  - about, 4-8

## U

---

- UNIQUE qualifier, 2-11
- use cases, 1-15
- user-defined functions
  - about, 4-8

## W

---

- WHERE clause
  - about, 1-13, 2-15
  - comparison operators, 2-15
  - HAVING clause, 2-17
- WITH clause
  - about, 2-11
  - LARGEST, 2-11
  - SMALLEST, 2-11
  - UNIQUE, 2-11
- WITHIN operator
  - about, 2-14, 3-5