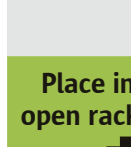
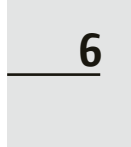
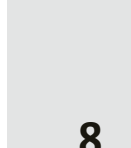


Sun Blade 6000 Rack Alignment Template

For more product service information see: www.sun.com/documentation



Side 1: Rack Preparation



Place in lowest open rack position

PROCEDURE 1 Gather Required Tools

- #2 Phillips screwdriver
- Mechanical Lift (Required if four persons are not available to lift the system into the rack. See Procedure 6 for details.)

PROCEDURE 2 Confirm Rack Mount Kit Contents (items not shown to scale)

- 1x Rack Alignment Template
- 2x Front Mounting Bracket
- 2x Rear Mounting Bracket
- 16x Screw, 10-32
- 16x Screw, M5
- 8x Screw, M6, Short
- 8x Screw, M6, Long
- 16x Cage Nut, M6
- 1x Left Shelf Rail
- 1x Right Shelf Rail

PROCEDURE 3 Determine Rack Type

The holes on rack posts will determine the hardware to use for kit installation:

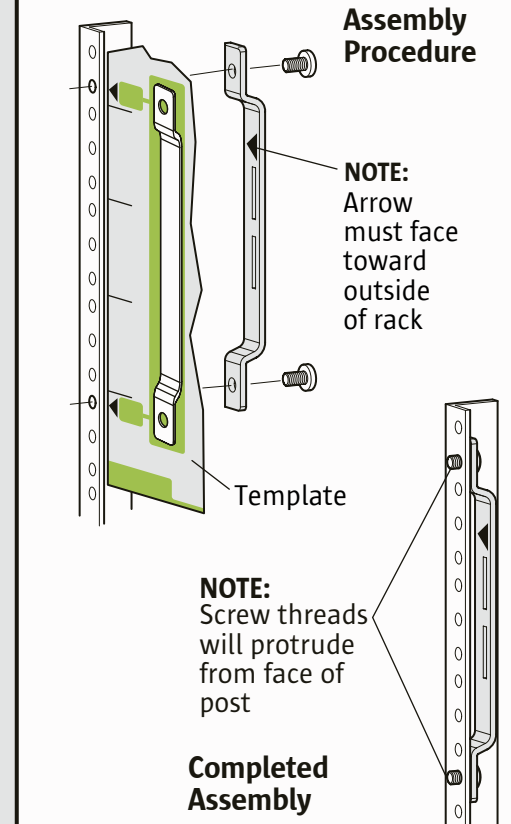
Round Hole Style (3 types)	Rack Post Holes	Hardware needed
Type 1	10-32 Threaded	10-32 Screws
Type 2	M5 Threaded	M5 Screws
Type 3	M6 Threaded	M6 Screws, Short M6 Screws, Long
Square Hole Style	Rack Post Holes	Hardware needed
	Square, non-threaded	M6 Screws, Short M6 Screws, Long M6 Cage Nuts

PROCEDURE 4 Rack Preparation

- Place the bottom edge of this template in the lowest open position in the rack.
- If necessary, shift the template upward until all 6 arrows align with holes in the rack posts.
- Ensure that the top of the template fits within the available open space in the rack.

Round Hole Racks:

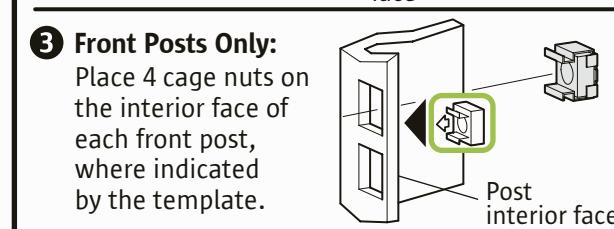
- Front Posts:** Attach the Front Mounting Brackets to the interior faces of the front rack posts, where indicated by the template, using 2 screws per bracket. If using M6 screws, use only the short screws for this step.



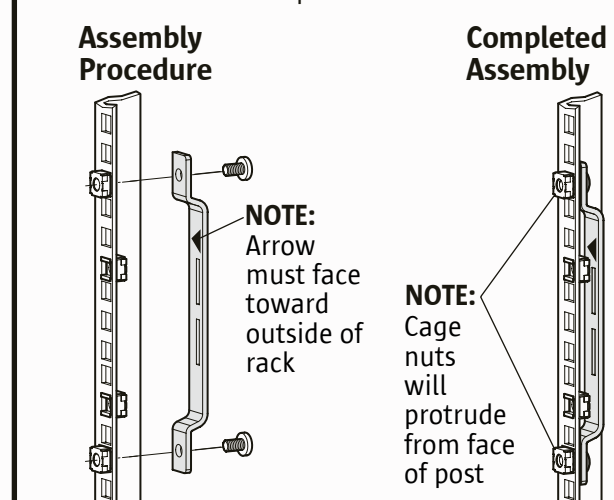
- Rear Posts:** Repeat step 2 using the Rear Mounting Brackets. If using M6 screws, use only the short screws for this step.

Square Hole Racks:

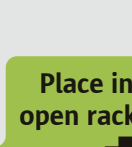
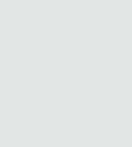
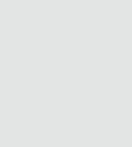
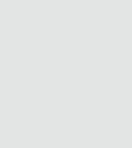
- All 4 Posts:** Place 2 cage nuts on the exterior face of each post, where indicated by the template.



- Front Posts:** Attach the Front Mounting Brackets to the interior faces of the front posts, using 2 M6 short screws per bracket.



- Rear Posts:** Repeat step 4 using the Rear Mounting Brackets and M6 short screws.



Place in lowest open rack position

Continue to Side 2 of Template

Sun Blade 6000 Rack Alignment Template Side 2: Shelf Rail and Chassis Installation

See Side 1 of template for rack preparation before beginning the procedures below.

PROCEDURE 5 Shelf Rail Installation

- Orient the left shelf rail as shown and place between the front and rear rack posts.
- Insert the front rail hooks into the front mounting bracket slots. Push the rail down to engage the hooks with the slots.
- Extend the rear section of the rail, and insert the rear hooks into the rear mounting bracket slots. Engage the hooks with the slots as was done in step 2, above.
- The rail is now fully supported by the mounting brackets.
- Repeat steps 1-4 for the right shelf rail.

PROCEDURE 6 Chassis Installation

CAUTION

System is Heavy (350lb/160kg)

To lift or transport use mechanical lift, (or) Remove parts listed below for a 4-person lift:

- 2 PS from top front
- 10 Blades from front
- 6 Fan modules from rear

- Raise the chassis to the height of the rail shelf surfaces and rest the chassis on the shelves. Use side handles (2 per side) for 4-person lift.
- Slide the chassis into the rack until the chassis front mounting flanges contact the rack posts. Install 8 screws to secure the chassis. If using M6 screws, use only the long screws for this step. Chassis installation is complete. If necessary, reinstall any components that were previously removed.



100%