



BEALiquid Data for WebLogic™

Installation Guide

Version 8.1
Document Date: July 2003
Revised: December 2003
Part Number: 886-002004-003

Copyright

Copyright © 2003 BEA Systems, Inc. All Rights Reserved.

Restricted Rights Legend

This software and documentation is subject to and made available only pursuant to the terms of the BEA Systems License Agreement and may be used or copied only in accordance with the terms of that agreement. It is against the law to copy the software except as specifically allowed in the agreement. This document may not, in whole or in part, be copied, photocopied, reproduced, translated, or reduced to any electronic medium or machine readable form without prior consent, in writing, from BEA Systems, Inc.

Use, duplication or disclosure by the U.S. Government is subject to restrictions set forth in the BEA Systems License Agreement and in subparagraph (c)(1) of the Commercial Computer Software-Restricted Rights Clause at FAR 52.227-19; subparagraph (c)(1)(ii) of the Rights in Technical Data and Computer Software clause at DFARS 252.227-7013, subparagraph (d) of the Commercial Computer Software--Licensing clause at NASA FAR supplement 16-52.227-86; or their equivalent.

Information in this document is subject to change without notice and does not represent a commitment on the part of BEA Systems. THE SOFTWARE AND DOCUMENTATION ARE PROVIDED "AS IS" WITHOUT WARRANTY OF ANY KIND INCLUDING WITHOUT LIMITATION, ANY WARRANTY OF MERCHANTABILITY OR FITNESS FOR A PARTICULAR PURPOSE. FURTHER, BEA Systems DOES NOT WARRANT, GUARANTEE, OR MAKE ANY REPRESENTATIONS REGARDING THE USE, OR THE RESULTS OF THE USE, OF THE SOFTWARE OR WRITTEN MATERIAL IN TERMS OF CORRECTNESS, ACCURACY, RELIABILITY, OR OTHERWISE.

Trademarks or Service Marks

BEA, Jolt, Tuxedo, and WebLogic are registered trademarks of BEA Systems, Inc. BEA Builder, BEA Campaign Manager for WebLogic, BEA eLink, BEA Liquid Data for WebLogic, BEA Manager, BEA WebLogic Commerce Server, BEA WebLogic Enterprise, BEA WebLogic Enterprise Platform, BEA WebLogic Express, BEA WebLogic Integration, BEA WebLogic Personalization Server, BEA WebLogic Platform, BEA WebLogic Portal, BEA WebLogic Server, BEA WebLogic Workshop and How Business Becomes E-Business are trademarks of BEA Systems, Inc.

All other trademarks are the property of their respective companies.

Contents

About This Document

What You Need to Know	ix
e-docs Web Site	x
How to Print the Document	x
Related Information	x
Contact Us!	x
Documentation Conventions	xi

1. Preparing to Install Liquid Data

Supported Platforms and Databases	1-2
Accessing Information from Enterprise Information Systems or Custom Applications	1-7
Internationalization Support	1-7
Installation Prerequisites	1-8
Server Installation Prerequisites	1-8
WebLogic Platform 8.1	1-8
General Requirements and Other Prerequisites	1-8
Client Installation Prerequisites	1-9
Required Order of Installation Tasks	1-9
About Licensing for Liquid Data	1-10
What Gets Installed	1-10
Preconfigured Samples Domain	1-10
Considerations for Adding Liquid Data to a WebLogic Server Domain	1-11

2. Installing Liquid Data Using GUI Mode

Before You Install	2-1
Starting the Installer on a Windows Platform	2-2
Starting the Installer on a UNIX Platform	2-2
Installing Liquid Data in GUI Mode.....	2-2
Next Steps.....	2-6

3. Installing Liquid Data Using Console or Silent Mode

Before You Install	3-1
Using Console Mode to Install Liquid Data.....	3-2
Using Silent Console Mode to Install Liquid Data	3-5
Notes About Silent Mode	3-6
Using Silent Mode on a Windows System	3-6
Using Silent Mode on a UNIX System	3-7
Installer Properties File	3-7
Next Steps.....	3-9

4. Post-Installation Tasks

Verify the Installation by Running the Samples and Starting Data View Builder	4-1
Set Up and Run the Samples	4-2
Start Data View Builder and Connect to the Samples Server.....	4-2
Modifying Data View Builder Start Script for Client-Only Installations	4-3
Ensure that weblogic.jar is Available on the Client System	4-4
Modify Data View Builder Start Script for weblogic.jar.....	4-4
Verify that the Liquid Data Client is Using Same Version of JDK as Server	4-4
Work Through the Quick Start Steps.....	4-5
Start Developing Your Own Data Integration Solution	4-6
Liquid Data Windows Shortcuts and UNIX Paths.....	4-6

Uninstalling Liquid Data 4-7

Index

About This Document

This document explains how to install BEA Liquid Data for WebLogic and how to perform a quick test to verify that the software is properly installed.

This document covers the following topics:

- [Chapter 1, “Preparing to Install Liquid Data,”](#) provides information about supported platforms databases, installation prerequisites (system software and hardware requirements), licensing, and summarizes the software and components that make up a full Liquid Data installation.
- [Chapter 2, “Installing Liquid Data Using GUI Mode,”](#) explains how to install Liquid Data using the GUI mode install process on Windows or the Liquid Data server on UNIX systems. Also provides information about supported databases and preconfigured domains.
- [Chapter 3, “Installing Liquid Data Using Console or Silent Mode,”](#) explains how to install Liquid Data using the command-line *console* or *silent mode* install process.
- [Chapter 4, “Post-Installation Tasks,”](#) explains how to run a quick test to ensure that you have a complete and working Liquid Data installation, and points you to the Liquid Data samples.

What You Need to Know

This document is intended for system administrators or others who want to install and set up Liquid Data.

e-docs Web Site

BEA product documentation is available on the BEA corporate Web site. From the BEA Home page, click on Product Documentation or go directly to the “e-docs” Product Documentation page at <http://e-docs.bea.com>.

How to Print the Document

You can print a copy of this document from a Web browser, one file at a time, by using the File—>Print option on your Web browser.

A PDF version of this document is available on the Liquid Data documentation Home page on the e-docs Web site (and also on the documentation CD). You can open the PDF in Adobe Acrobat Reader and print the entire document (or a portion of it) in book format. To access the PDF files, open the Liquid Data documentation Home page, click the PDF files button and select the document you want to print.

If you do not have the Adobe Acrobat Reader, you can get it for free from the Adobe Web site at <http://www.adobe.com/>.

Related Information

The following documents contain information that is useful to refer to after installing BEA Liquid Data:

- Liquid Data *Concepts Guide*
(<http://edocs.bea.com/liquiddata/docs81/prodover/index.html>)
- BEA WebLogic Server *Administration Guide*
(<http://edocs.bea.com/wls/docs81/adminguide/index.html>)

Contact Us!

Your feedback on the BEA Liquid Data documentation is important to us. Send us e-mail at **docsupport@bea.com** if you have questions or comments. Your comments will be reviewed directly by the BEA professionals who create and update the Liquid Data documentation.

In your e-mail message, please indicate that you are using the documentation for the BEA Liquid Data for WebLogic 8.1 release.

If you have any questions about this version of Liquid Data, or if you have problems installing and running Liquid Data, contact BEA Customer Support through BEA WebSupport at **www.bea.com**. You

can also contact Customer Support by using the contact information provided on the Customer Support Card, which is included in the product package.

When contacting Customer Support, be prepared to provide the following information:

- Your name, e-mail address, phone number, and fax number
- Your company name and company address
- Your machine type and authorization codes
- The name and version of the product you are using
- A description of the problem and the content of pertinent error messages

Documentation Conventions

The following documentation conventions are used throughout this document.

Convention	Item
boldface text	Indicates terms defined in the glossary.
Ctrl+Tab	Indicates that you must press two or more keys simultaneously.
<i>italics</i>	Indicates emphasis or book titles.
monospace text	<p>Indicates code samples, commands and their options, data structures and their members, data types, directories, and file names and their extensions. Monospace text also indicates text that you must enter from the keyboard.</p> <p><i>Examples:</i></p> <pre>#include <iostream.h> void main () the pointer psz chmod u+w * \tux\data\ap .doc tux.doc BITMAP float</pre>

Convention	Item
monospace boldface text	Identifies significant words in code. <i>Example:</i> void commit ()
<i>monospace italic text</i>	Identifies variables in code. <i>Example:</i> String <i>expr</i>
UPPERCASE TEXT	Indicates device names, environment variables, and logical operators. <i>Examples:</i> LPT1 SIGNON OR
{ }	Indicates a set of choices in a syntax line. The braces themselves should never be typed.
[]	Indicates optional items in a syntax line. The brackets themselves should never be typed. <i>Example:</i> buildobjclient [-v] [-o name] [-f <i>file-list</i>]... [-l <i>file-list</i>]...
	Separates mutually exclusive choices in a syntax line. The symbol itself should never be typed.
...	Indicates one of the following in a command line: <ul style="list-style-type: none">• That an argument can be repeated several times in a command line• That the statement omits additional optional arguments• That you can enter additional parameters, values, or other information The ellipsis itself should never be typed. <i>Example:</i> buildobjclient [-v] [-o name] [-f <i>file-list</i>]... [-l <i>file-list</i>]...
.	Indicates the omission of items from a code example or from a syntax line. The vertical ellipsis itself should never be typed.

About This Document

Preparing to Install Liquid Data

Note: If you are upgrading from Liquid Data 1.0 or 1.1 to 8.1, you should review the [Migration Guide](#) prior to installing Liquid Data 8.1.

Before you install BEA Liquid Data for WebLogic, make sure your system meets minimum requirements. This chapter provides information about supported platforms, system hardware and software requirements, how to install all needed software in the proper order, how to get up-to-date product licenses, and an overview of what gets installed.

The following sections are included here:

- [Supported Platforms and Databases](#)
- [Accessing Information from Enterprise Information Systems or Custom Applications](#)
- [Internationalization Support](#)
- [Installation Prerequisites](#)
 - [Server Installation Prerequisites](#)
 - [Client Installation Prerequisites](#)
- [Required Order of Installation Tasks](#)
- [About Licensing for Liquid Data](#)
- [What Gets Installed](#)
 - [Preconfigured Samples Domain](#)
- [Considerations for Adding Liquid Data to a WebLogic Server Domain](#)

Supported Platforms and Databases

BEA Liquid Data for WebLogic supports the WebLogic Platform support configurations for each operating system WebLogic Platform type.

In general any thread-safe, transaction-callable DBMS accessible through JDBC should be available to Liquid Data.

Note: With certain noted exceptions, Liquid Data supports the same platforms, operating systems, chip architecture, SDKs, and RDBMS systems as WebLogic Platform 8.1 SP2. For complete details on this support see [Supported Configurations for WebLogic Platforms](#).

Table 1-1 Supported Platforms and Databases for Liquid Data

Operating System and Version	Chip Arch.	Supported STKs	Minimum Required Configuration	DBMS (Database Support) For more information, see Supported Databases and Drivers in the WebLogic Platform documentation.
<ul style="list-style-type: none">HP-UX 11.0¹HP-UX 11i¹	PA RISC	HP SDK 1.4.1.05 ²	<ul style="list-style-type: none">HP 9000650 MHz (or faster) CPU512 MB RAM (1 GB RAM recommended)TCP/IP network interface	<ul style="list-style-type: none">Oracle 8.1.7.4 and later service packsOracle 9.2.0.4 and later service packsPointBase 4.4³Sybase 12.5.03⁴

Operating System and Version	Chip Arch.	Supported STKs	Minimum Required Configuration	DBMS (Database Support)
				For more information, see Supported Databases and Drivers in the WebLogic Platform documentation.
<ul style="list-style-type: none"> • Microsoft Windows 2000 Professional with Service Pack 2 or higher^{5, 6} • Microsoft Windows 2000 Server with Service Pack 2 or higher⁶ • Microsoft Windows 2000 Advanced Server with Service Pack 2 or higher⁶ • Microsoft Windows 2000 Datacenter Server with Service Pack 2 or higher⁶ • Microsoft Windows XP with Service Pack 1 or higher^{5, 6} 	IA32	<ul style="list-style-type: none"> • Sun Java 2 SDK 1.4.1_05⁷ • WebLogic JRocket 8.1 SP2 SDK⁸ 	<ul style="list-style-type: none"> • Intel Pentium III (or higher) • 700 MHz (or faster) CPU • 512 MB RAM (1 GB RAM recommended) • TCP/IP network interface • Web browser <ul style="list-style-type: none"> – Microsoft Internet Explorer 5.x or above – Netscape Navigator 4.7 or above • WebLogic Server 8.1 	<ul style="list-style-type: none"> • DB2 8.1 FixPak 3⁹ • Microsoft SQL Server 2000 SP3¹⁰ • Informix 9.3 • Oracle 8.1.7.4 and later service packs • Oracle 9.2.0.4 and later service packs • PointBase 4.4³ • Sybase 12.5.03⁴

Operating System and Version	Chip Arch.	Supported STKs	Minimum Required Configuration	DBMS (Database Support) For more information, see Supported Databases and Drivers in the WebLogic Platform documentation.
<ul style="list-style-type: none">Red Hat Enterprise Linux AS 2.1 Kernel 2.4.9 with glibc-2.2.4-31.7 (and later errata levels)Red Hat Enterprise Linux ES 2.1 Kernel 2.4.9 with glibc-2.2.4-31.7 (and later errata levels)Red Hat Enterprise Linux WS 2.1 Kernel 2.4.9 with glibc-2.2.4-31.7 (and later errata levels)⁵	IA32	<ul style="list-style-type: none">Sun Java 2 1.4.1_05¹¹WebLogic JRocket 8.1 SP2 SDK⁸	<ul style="list-style-type: none">Intel Pentium III (or higher)700 MHz (or faster) CPU512 MB RAM (1 GB RAM recommended)TCP/IP network interface	<ul style="list-style-type: none">DB2 8.1 FixPak 3⁹Oracle 8.1.7.4 and later service packsOracle 9.2.0.4 and later service packsPointBase 4.4³Sybase 12.5.03⁴

Operating System and Version	Chip Arch.	Supported STKs	Minimum Required Configuration	DBMS (Database Support) For more information, see Supported Databases and Drivers in the WebLogic Platform documentation.
<ul style="list-style-type: none"> • Sun Solaris 8¹ • Sun Solaris 9¹ 	Sparc 64	Sun Java 2 1.4.1_05 (32 bit) SDK ⁷	<ul style="list-style-type: none"> • UltraSPARC-II • 450 MHz (or faster) CPU • 512 MB RAM (1 GB RAM recommended) • TCP/IP network interface 	<ul style="list-style-type: none"> • DB2 8.1 FixPak 3⁹ • Oracle 8.1.7.4 and later service packs • Oracle 9.2.0.4 and later service packs • Sybase 12.5.03⁴ • Informix 9.3 • PointBase 4.4³
<ul style="list-style-type: none"> • IBM¹² AIX 5L Version 5.1^{13, 14} • IBM¹² AIX 5L Version 5.2^{13, 14} 	<ul style="list-style-type: none"> • PowerPC, POWER3 • PowerPC, POWER4 	IBM SDK 1.4.1 32-bit PTF: ca141-20030703a ¹⁵	<ul style="list-style-type: none"> • Minimum processor speed: <ul style="list-style-type: none"> - PowerPC, POWER3: 450 MHz - PowerPC, POWER4: 1 GHz • 512 MB RAM minimum (1 GB RAM recommended) • TCP/IP network interface 	<ul style="list-style-type: none"> • Oracle 8.1.7^{16,17} • Oracle 9.2.0 & later service packs¹⁸ • PointBase 4.4³

1. The WebLogic Workshop IDE and WebLogic Integration Format Builder are not supported on HP-UX and Sun Solaris systems. HP-UX and Sun Solaris are supported for the production deployment of applications developed in the WebLogic Workshop IDE, and for remote debugging of applications developed in the WebLogic Workshop IDE. HP-UX and Sun Solaris are also supported for the development and production deployment of WebLogic Server applications developed with other tools.
2. WebLogic Platform 8.1 SP2 supports HP SK 1.4.1.05 and all later service packs for development and production deployment on HP-UX. See operating system footnotes for other restrictions.
3. PointBase Server is a pure-Java relational database management system that BEA includes with WebLogic Platform to allow you to run code samples. It is provided solely to support product evaluation, either in the form of custom trial applications or through packaged sample applications provided with BEA products. Non-evaluation development and/or production use of the PointBase Server requires a separate license be obtained by the end user directly from PointBase.
4. WebLogic Integration does not support the BEA WebLogic Type 4/XA JDBC Driver for Sybase.
5. Microsoft Windows 2000 Professional and Microsoft Windows XP, and Red Hat Enterprise Linux WS 2.1 are supported for the design, development, and verification of applications; they are not supported for production server deployment.
6. The WebLogic Integration Format Builder and the WebLogic Workshop IDE, with extension for WebLogic Integration and WebLogic Portal, are supported on Microsoft Windows XP, and on Microsoft Windows 2000 Server, Advanced Server, and Datacenter Server with Service Pack 2 or higher. Microsoft Windows 2000 Server, Advanced Server, and Datacenter Server with Service Pack 2 are supported for the production deployment of applications developed in the WebLogic Workshop IDE, and are also supported for the development and production deployment of WebLogic Server applications developed with other tools. Servers started from the Workshop IDE can be configured to use with either the WebLogic JRocket SDK or the Sun Java 2 SDK.
7. The Sun Java 2 1.4.1_05 SDK, and all later service packs of 1.4.1 are supported for development and production deployment on Windows and Solaris. See operating system footnotes for other restrictions.
8. The WebLogic JRockit 8.1 SP2 SDK is supported on Windows and Red Hat Enterprise Linux systems for development and production deployment. See operating system footnotes for other restrictions.
9. DB2 is not supported by WebLogic Integration.
10. WebLogic Integration does not support the BEA WebLogic Type4/XA JDBC Driver for MS SQL Server.
11. On Red Hat Enterprise Linux platforms, the Sun Java 2 1.4.1_05 SDK and all later service packs of 1.4.1 are supported for development only. See operating system footnotes for other restrictions.
12. The IBM AIX platform is not yet supported by WebLogic Platform 8.1 SP2. Instead, use 8.1 SP1.

13. The procedure for installing WebLogic Platform on AIX differs from the generic installation procedure followed for other operating systems. For instructions, see "Installing WebLogic Platform 8.1 on IBM AIX" in [WebLogic Platform Release Notes](#).

14. The WebLogic Workshop IDE and WebLogic Integration Format Builder are not supported on IBM AIX systems. IBM AIX is supported for the production deployment of applications developed in the WebLogic Workshop IDE. Debugging of applications developed in the WebLogic Workshop IDE, for deployment on AIX, should be accomplished to the extent possible on the Workshop development system; use of JVM debug mode with the IBM JVM significantly degrades application performance and debugging effectiveness. IBM AIX is also supported for the development and production deployment of WebLogic Server applications developed with other tools.

15. Because the required SDK is not delivered with WebLogic Platform, you must download it from the IBM Web site and install it, manually, before installing WebLogic Platform. For instructions, see "Downloading and Installing the IBM SDK" in [WebLogic Platform Release Notes](#).

16. Oracle 8.1.7 and Microsoft SQL Server 2000 are not supported by WebLogic Integration 8.1.

17. If you are running Oracle 8.1.7 and you want to use WebLogic Portal, make sure you are running Oracle 8.1.7.4 (patch level) or higher.

18. When distributed transactions are used in a configuration that includes the Oracle 9.2.0 DBMS (on any operating system), BEA recommends use of Oracle 9.2.0.3 server and Oracle 9.2.0.3 Thin/XA Driver.

Accessing Information from Enterprise Information Systems or Custom Applications

Liquid Data supports use of several Enterprise Information Systems (EIS) and custom applications as *Application View* data sources. Liquid Data interoperates with the BEA WebLogic Integration/ Application Integration (AI) layer through the Liquid Data Application View interface. Liquid Data can retrieve information through application-specific adapters from applications such as SAP, Siebel, PeopleSoft, Oracle Financial, among others, which are certified to work with BEA WebLogic Integration.

Internationalization Support

The Liquid Data server and Data View Builder are internationalized and support multi-byte data from the underlying data sources. For this release, the user interface is in English only; it is ready for translation.

Liquid Data has been tested with Japanese character sets, where the underlying databases are running in Japanese locales. In accordance with the XML specification, target schema element names must be composed of single-byte characters. For any specific internationalization issues, see the *Release Notes*.

Installation Prerequisites

Client systems and server systems have slightly different installation prerequisites—the main difference being that server systems require that WebLogic Platform 8.1 be installed prior to installing the Liquid Data server.

Note: Client systems where you plan to install only the Data View Builder do not require an installation of WebLogic Platform.

- [Server Installation Prerequisites](#)
- [Client Installation Prerequisites](#)

Server Installation Prerequisites

This section lists the prerequisites for installing the Liquid Data server.

WebLogic Platform 8.1

You must have WebLogic Platform 8.1 installed on the system where you plan to install the Liquid Data Server.

- WebLogic Platform 8.1 is available as a Web download from the BEA Download Center at <http://commerce.bea.com/downloads/products.jsp>.
- See the WebLogic Platform [Installation Guide](#) in the WebLogic Platform documentation for instructions on installing WebLogic Platform.

Note: If you are running Windows 2000, the maximum classpath size can be exceeded. For this reason it is recommended that when you install Liquid Data, you install it into <BEAHOME> directory with a directory name of four characters or less such as <BEA>.

General Requirements and Other Prerequisites

- See “[Supported Platforms and Databases](#)” on page 1-2 for memory recommendations on various platforms.)

The minimum RAM recommendations are for one instance of WebLogic Server on which Liquid Data is running. You may need more memory if you run two or more instances of WebLogic Server and/or Liquid Data.

Note: Some systems use disk space as virtual RAM. Performance when running in virtual RAM may be markedly slower than when running in real RAM.

- Java 2 SDK, Standard Edition, v1.4.1 (JDK141_03). (See [“Supported Platforms and Databases” on page 1-2](#) for exact JDK versions required on various platforms.)

When you install WebLogic Server, JDK is installed directly under the <BEAHOME> directory as follows:

```
<BEAHOME>/JDK141_03
```

where <BEAHOME> is the path to your <BEAHOME>; that is, where you installed WebLogic Platform. By default, <BEAHOME> is c : /bea on Windows systems.

Client Installation Prerequisites

The WLS file `weblogic.jar` is required to start the Data View Builder. Therefore, a copy of WebLogic Server `weblogic.jar` file must be available to the machine where you install the Data View Builder. (For install options that include Liquid Data server, this is addressed automatically as a part of the installation but not so for the client-only install.)

See [“Modifying Data View Builder Start Script for Client-Only Installations” on page 4-3](#) in “Post-Installation Tasks.”

Note: You can use Liquid Data in a team development environment with multiple clients accessing a shared Liquid Data server repository for resources such as schema files, XML files, local WSDL definitions for web services, and so on. For more information on various deployment and development scenarios and environments, see the [Deployment Tasks](#) topic in the *Deployment Guide*.

Required Order of Installation Tasks

To ensure a valid Liquid Data installation, you must install products and components in the following order:

1. Unless you are using the Liquid Data client-only installation set, you need to install WebLogic Platform 8.1 including WebLogic Server and JDK141_03
2. Install Liquid Data.

About Licensing for Liquid Data

When you install Liquid Data, a valid evaluation license is automatically included with the installation. You do not need to take any extra steps for Liquid Data licensing.

What Gets Installed

Note: Before you install Liquid Data, you must install WebLogic Server.

The full install of Liquid Data results in the installation of the following key components on the system:

- Liquid Data server (running as a deployed application in WebLogic Platform).
- Liquid Data configuration and monitoring pages added to the WebLogic Administration Console.
- Data View Builder GUI.
- Liquid Data Workshop Control
- Liquid Data Sample Domain

For more information about the software, refer to the Liquid Data *Concepts Guide* (<http://edocs.bea.com/liquiddata/docs81/concepts/index.html>).

For information on how to configure Liquid Data once you have installed it, refer to the BEA WebLogic Server *Administration Guide* (<http://edocs.bea.com/wls/docs81/adminguide/index.html>).

Preconfigured Samples Domain

The full Liquid Data with Samples option provides a preconfigured samples domain as shown in the following table.

Table 1-2 Liquid Data Samples Preconfigured Domain and Start Commands for Samples Server

Platform	Windows and UNIX Paths to Start in Each Domain	Description
Windows	Start->Programs -> BEA WebLogic Platform 8.1->BEA Liquid Data for WebLogic 8.1 -> Liquid Data Samples -> Samples Server <i>or</i> <code><WL_HOME>/samples/domains/liquiddata/ \startWeblogic.cmd</code>	Starts the Liquid Data samples server on Windows
UNIX	<code><WL_HOME>/samples/domains/liquiddata/ \startWeblogic.sh</code>	Starts the Liquid Data samples server on UNIX

Note: `<WL_HOME>` is the home location of your WebLogic installation, by default, `<WL_HOME>` is `c:/bea/weblogic810`.

For a detailed explanation of domains, see [“Creating WebLogic Configurations Using the Domain Control Wizard”](#) in the WebLogic Platform documentation.

Considerations for Adding Liquid Data to a WebLogic Server Domain

For information about adding Liquid Data to a WebLogic Server domain (including preconfigured domains for BEA WebLogic Integration, BEA WebLogic Portal, or WebLogic Workshop), see the [Deployment Tasks](#) topic in the *Deployment Guide*. The information provided in the *Deployment Guide* about adding Liquid Data to a domain as well as setting up clustered environments is relevant to both deployed systems and development environments.

Preparing to Install Liquid Data

Installing Liquid Data Using GUI Mode

This topic describes how to install BEA Liquid Data for WebLogic using GUI mode. It includes the following sections:

- [Before You Install](#)
- [Starting the Installer on a Windows Platform](#)
- [Starting the Installer on a UNIX Platform](#)
- [Installing Liquid Data in GUI Mode](#)
- [Next Steps](#)

Before You Install

Note: If you are upgrading from Liquid Data 1.0 or Liquid Data 1.1 to 8.1, review the [Migration Guide](#) prior to installing Liquid Data 8.1.

Before you begin installing Liquid Data, make sure that all installation prerequisites are met. These include:

- Having WebLogic Platform 8.1 installed in the <BEAHOME> directory in which you are going to install Liquid Data (unless you are using Liquid Data client installation only).
- Making sure that no current or previous versions of the Liquid Data server are running.
- Removing Liquid Data if it is located in the same <BEAHOME> directory. See [“Uninstalling Liquid Data” on page 4-7](#) for details.

In addition, it is recommended for Windows (and a requirement for UNIX) that an entry for the JDK141_03 bin directory (for example <BEA_HOME>/JDK141_03/bin) be included in your PATH environment variable setting before any other JDK bin directories.

For complete information about installation prerequisites, see [“Installation Prerequisites” on page 1-8 in Chapter 1, “Preparing to Install Liquid Data.”](#)

Starting the Installer on a Windows Platform

To start the installer in GUI mode on a Windows platform, use a Windows Explorer file browser to navigate to the folder in which you downloaded the Liquid Data installer, and double-click on the installer executable file.

For example, the installer file for BEA Liquid Data for WebLogic 8.1 is :

```
liquiddata_810_win.exe.
```

Starting the Installer on a UNIX Platform

To run the installer in GUI mode, make sure that the console attached to the machine on which you are installing the software supports a Java-based GUI.

To start the installer in GUI mode on a UNIX platform, do the following:

1. Open a command window, and change directories (`cd`) in which you downloaded the Liquid Data installer file.
2. Start the installer in a new shell by entering the following

For example, to run the installer for the Solaris version of Liquid Data 8.1 enter the following command at the prompt:

```
sh filename.bin
```

where *filename.bin* is the name of the Liquid Data installation program specific to your platform; for example, `liquiddata_810_solaris.bin` for the Solaris version of Liquid Data 8.1.

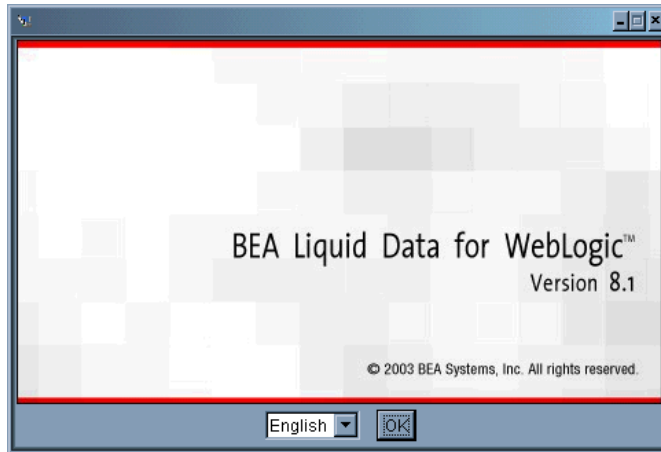
You will find similarly-named installer files for all UNIX versions of Liquid Data (Solaris, HP/UX).

Installing Liquid Data in GUI Mode

After you start the installer as described in [“Starting the Installer on a Windows Platform” on page 2-2](#) or [“Starting the Installer on a UNIX Platform” on page 2-2](#), perform the following procedure to complete the installation:

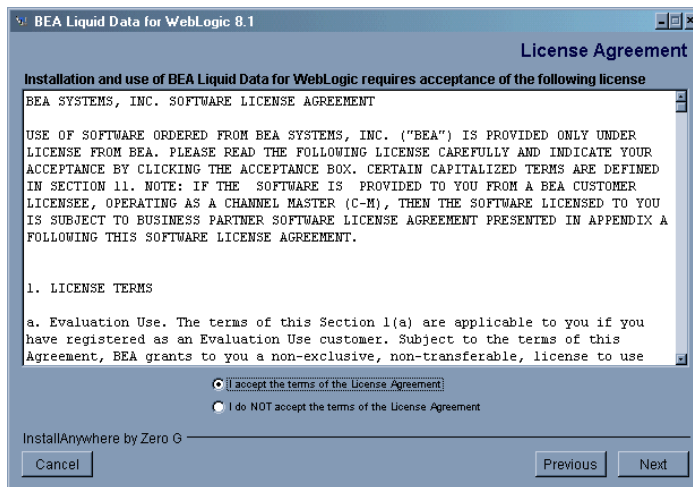
The initial Liquid Data installation dialog box is displayed as an introduction.

Figure 2-1 Liquid Data Installation Introduction



1. English is currently the only supported language. Click OK. After clicking Next on the initial installation options screen, you will see the License Agreement.

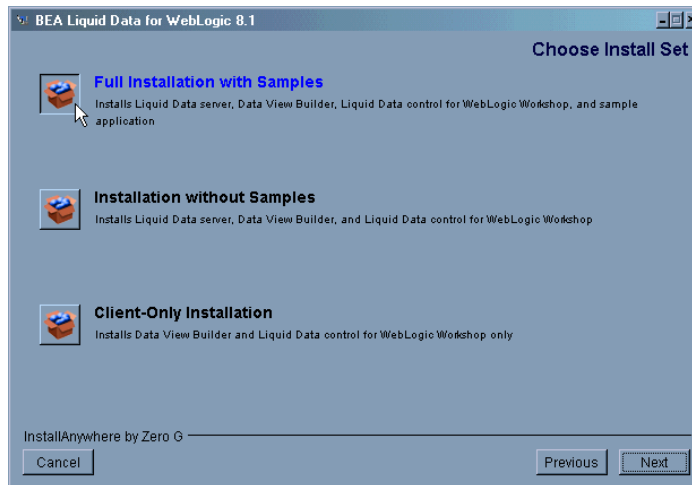
Figure 2-2 License Agreement



2. Review the License Agreement, using the scroll bar to display the text. Select the Yes option if you accept. Then click Next.

The Choose Install Set dialog box is displayed.

Figure 2-3 Choose Install Set



3. Select one of the following options:

- Full Installation with Samples

This option installs all the Liquid Data components, plus the Liquid Data Samples domain, including the Retail Sample Application. Major Liquid Data components installed include the Liquid Data server, the Data View Builder client, the Administration Console and the Liquid Data control for WebLogic Workshop.

- Installation without Samples

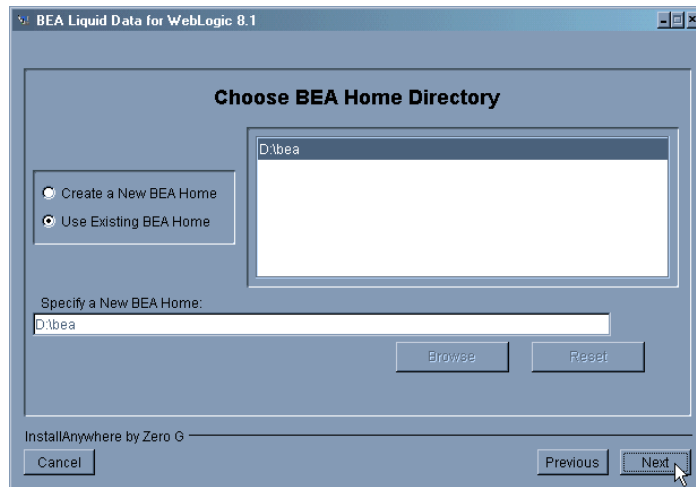
This option installs all the Liquid Data components except the Samples domain.

- Client Only Installation

This option installs the Data View Builder client and Liquid Data control for WebLogic Workshop only. (Samples, WebLogic server, and console are *not* installed.)

4. Click Next.

The Choose BEA Home Directory dialog box is displayed.

Figure 2-4 Choose BEA Home Directory

The BEA Home (<BEAHOME>) directory serves as the central support directory for all the BEA products installed on your system. For a detailed description of how the <BEAHOME> directory is used, see “BEA Home Directory” in “Preparing to Install WebLogic Server” in *Installing WebLogic Server*. This document is available, in the BEA WebLogic Server document set, at the following URL:

<http://e-docs.bea.com/wls/docs81/install/instpre.html>

5. Specify the <BEAHOME> directory as follows:

- If you selected one of the options that includes the Liquid Data server, verify that the Use Existing BEA Home option is selected. Then select the existing <BEAHOME> that contains WebLogic Server.

Note: If you are installing one of the options that includes Liquid Data server, you must install into the same directory where you installed the WebLogic Platform 8.1

- If you selected the Client Only Installation option, create a new <BEAHOME> in which to install the Data View Builder. (The default is C:\bea.)

6. Click Next.

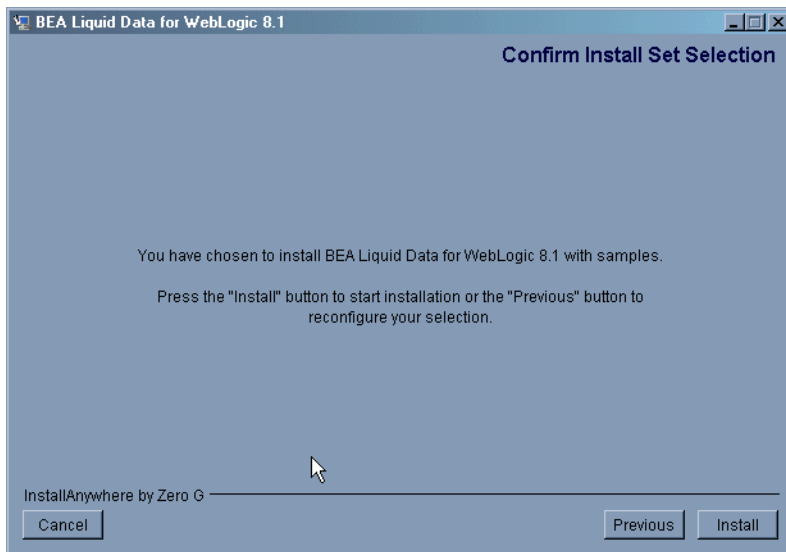
A warning message is displayed under two conditions:

- If a previously installed copy of Liquid Data 8.1 is found. In such a case you will be asked if you want to override the previous version. (Alternatively, you can uninstall Liquid Data prior to the installation.)

- If WebLogic Platform 8.1 is not found in the specified <BEAHOME> directory. If this occurs, you need to exit the Liquid Data installation and install WebLogic Platform 8.1 before proceeding with the Liquid Data installation.

If the prerequisite software (WebLogic Platform 8.1) is present, the “Confirm Install Set Selection” dialog is displayed. The dialog shows the install set you chose.

Figure 2-5 Confirm Install Set



Verify that the information displayed reflects your selections (Liquid Data Server and Sample, Liquid Data Server, or Client Only). Click Install to begin copying files.

Additional information about Liquid Data is displayed as the installer copies files. When the installer finishes copying the required files, the “Congratulations-Install Complete” dialog box is displayed.

7. Click Done to dismiss the Install Complete dialog box.

Next Steps

For all types of installations, you must complete some post-installation tasks before you can work with Liquid Data. See [Chapter 4, “Post-Installation Tasks,”](#) for information on the following important post-install steps:

- [“Verify the Installation by Running the Samples and Starting Data View Builder” on page 4-1.](#)

- [“Modifying Data View Builder Start Script for Client-Only Installations”](#) on page 4-3.

Installing Liquid Data Using GUI Mode

Installing Liquid Data Using Console or Silent Mode

This section provides the information you need to install BEA Liquid Data for WebLogic using either Console mode or Silent mode. It includes the following sections:

- [Before You Install](#)—A reminder to make sure that all installation prerequisites are met before you install Liquid Data, including installation of WebLogic Platform 8.1 (<WL_HOME>) in the BEA home directory (<BEAHOME>) where you plan to install Liquid Data.
- [Using Console Mode to Install Liquid Data](#)—Console mode is an interactive installation that can be used on a UNIX system without a graphics (windowing) workstation.
- [Using Silent Console Mode to Install Liquid Data](#)—Silent mode is a non-interactive installation on a Windows or UNIX system. The installation gets the required information from a properties file that you provide.
- [Next Steps](#)—Refers you to critical post-installation tasks you must complete before you begin working with Liquid Data.

Before You Install

Before you begin installing Liquid Data, make sure that all installation prerequisites are met. For installations where you install the Liquid Data server, WebLogic Platform 8.1 must be installed in the BEA Home directory in which you are going to install Liquid Data.

For complete information about installation prerequisites, see [“Installation Prerequisites” on page 1-8 in Chapter 1, “Preparing to Install Liquid Data.”](#)

Using Console Mode to Install Liquid Data

This section summarizes the console-mode installation procedure, a set of steps that emulates the graphical installation procedure.

Note: You cannot install Liquid Data in console mode on Solaris systems running in a Japanese locale; if you are installing on a Japanese Solaris system, change your locale in the shell in which you are installing to English and then install the product. After Liquid Data is installed, you can then run it in a Japanese locale.

To install Liquid Data on a UNIX system in console mode:

1. Go to the directory that contains the Liquid Data installer `liquiddata_810_solaris.bin` file.
2. Start the installation by entering the following command at the prompt:

```
sh liquiddata_810_solaris.bin -i CONSOLE
```

The message `Preparing to install` is displayed, followed (within a couple of moments) by the message `Preparing CONSOLE Mode Installation`. Once preparation is complete, you are prompted to select the language in which you want the text of the installation program to be displayed, as shown in the following text:

```
=====
Choose Locale...
-----

->1- English

CHOOSE LOCALE BY NUMBER:
=====
```

3. Enter 1 or press Enter to accept the default.

The following introductory message is displayed:

```
=====
Introduction
-----

This installer will guide you through the installation of
'BEA Liquid Data'. On each step, answer the questions
provided. Type "quit" at any time to exit the installer.

PRESS <ENTER> TO CONTINUE:
=====
```

4. Press Enter to continue.

The license agreement is displayed. Review the entire agreement. When you reach the end of the agreement, you are prompted to accept or reject the terms.

DO YOU AGREE WITH THE TERMS OF THE LICENSE? (Y/N) :

5. Enter y if you accept the terms.

You are prompted to choose an install set, as shown in the following text:

```
=====
Choose Install Set
-----
Please Choose the Install Set to be installed by this installer.

->1- Liquid Data Server with Samples
    2- Liquid Data Server
    3- Client Only

ENTER THE NUMBER FOR THE INSTALL SET, OR <ENTER> TO ACCEPT THE DEFAULT
:1
=====
```

6. Do one of the following:

- Press Enter to select Liquid Data Server with Samples (option 1).

This option is a full installation of all Liquid Data components, plus the Liquid Data samples. Liquid Data components installed are the Liquid Data server, the Data View Builder client, and the Liquid Data samples.

- Enter 2 to select the Liquid Data Server only.

This option installs the Liquid Data server and Data View Builder. (The Samples are not installed.)

- Enter 3 to Select Client Only.

This option installs the Data View Builder client only. (Samples and server are not installed.)

Note: Liquid Data supports a team development system configuration wherein multiple clients can access a shared remote server. The Liquid Data Server can be accessed remotely through the Data View Builder. This makes a client-only install a useful option in scenarios where multiple users have network access to one or more shared remote servers set up with a full Liquid Data installation.

You are prompted to choose a BEA Home directory, as shown in the following text:

```
=====
Choose BEA Home Directory
-----

->1- Use Existing BEA Home
   2- Create a New BEA Home
```

Enter a number(1):

Note: The <BEAHOME> directory serves as the central support directory for all the BEA products installed on your system. For a detailed description of how this directory is used, see “BEA Home Directory” in “Preparing to Install WebLogic Server” in *Installing BEA WebLogic Server*. This document is available, in the WebLogic Server document set, at the following URL:

<http://e-docs.bea.com/wls/docs81/install/instpre.html>

7. Do one of the following:

- If you selected either of the options that includes server install (option 1 or 2), you must install the software in the existing <BEAHOME> directory where you installed the WebLogic Platform 8.1. Press Enter to select Use Existing BEA Home.
- If you selected the Client Only Installation option, enter 2 to select Create a New BEA Home in which to install the Data View Builder. If the target directory does not already exist, it is created. (The default is C:\bea.)

8. Do one of the following:

- If you selected Use Existing BEA Home, you are prompted to select among the available BEA Home directories. Typically, only one <BEAHOME> is available. However, if more than one BEA Home directory is configured, multiple options are displayed, as shown in the following text:

```
->1- /home1/bea
    2- /home2/beahome
Existing BEA Home(1):
```

```
=====
```

Enter the number corresponding to a BEA Home directory that contains WebLogic Server

- If you selected Create a New BEA Home (Client only installation), you are prompted to enter the appropriate path for the new BEA Home directory. Enter the absolute path.

9. Press Enter. A warning message may or may not be displayed.

- A warning message is displayed if a previously installed copy of Liquid Data 1.1 is found, or if WebLogic Server 8.1 is not found in the specified BEA Home directory.

- If no warning message is displayed, you are prompted to choose an installation directory, as shown in the following text:

```
=====
Choose Product Directory
-----
->1- Use Current Selection (/home1/beatoo/weblogic810/bea_ld)
   2- Modify Current Selection (/home1/beatoo/weblogic810/bea_ld)

Select a number or <Enter> for default(1):
=====
```

10. Press Enter to install the software in the selected directory, or enter 2 if you want to use a different location. If you enter 2, you are then prompted to specify a product installation directory. Enter the absolute path for your preferred location.

One of the following occurs, depending on the type of installation selected:

- If you selected the Server Only option or Client Only Installation option, the Confirm Install Set message is displayed. Go to step 12.
- If you selected the Client Only Installation, the installation begins. The installation status is displayed as it progresses. When installation is complete, the Install Complete message is displayed. Press Enter to exit the installer.

11. A message is displayed showing the components to install and asking you to verify the install set. Verify that the information displayed reflects your selections. Press Enter to begin copying files.

The installation begins and the installation status is displayed as it progresses. Since sample data is being loaded, this may take several minutes. When the installation is complete, a “Congratulations! Install Complete...” message is displayed.

12. Press Enter to exit the installer.

This completes the Console Mode installation process. Be sure to read [“Next Steps” on page 3-9](#) regarding important post-installation tasks that must be completed before you begin to work with Liquid Data.

Using Silent Console Mode to Install Liquid Data

Both the Windows and UNIX versions of the installer provide a noninteractive, or *silent-mode* installation, which you can use if you want to install Liquid Data without needing to supply information from the keyboard during the installation process. Instead, the installer gets the required information from a properties file that you provide.

The following sections explain how to install Liquid Data using silent mode.

Notes About Silent Mode

Before launching a silent-mode installation, make sure that all installation prerequisites are met and that all the information in the properties file is correct. For example, one prerequisite for performing a full installation that includes Liquid Data server is that WebLogic Platform 8.1 must be installed in the `<BEAHOME>` directory in which you are going to install Liquid Data. For information about installation prerequisites, see [“Installation Prerequisites” on page 1-8 in Chapter 1, “Preparing to Install Liquid Data.”](#)

After the silent installer is started, it proceeds in the background and does not report exceptions. Some exceptions are ignored.

However, if a previously installed copy of Liquid Data is detected, a dialog box will appear asking if you want to override the old version.

Other exceptions cause the installer to fail. For example, if the specified BEA Home directory `<BEAHOME>` and the specified Liquid Data install directory (`USER_INSTALL_DIR`) does not exist or is incorrect, the installer fails.

On UNIX systems, the installer displays the message `Installation Complete` when it finishes. This message does not necessarily indicate that the installer was successful; it means only that the process has finished running.

If a fatal exception occurs during installation, no changes are made to the system.

Using Silent Mode on a Windows System

To install using silent mode on a Windows system:

1. Create the required installer properties file. The content of the file is described in [“Installer Properties File” on page 3-7](#). Any legal file name can be used. For illustration purposes, the properties file is named `ld_properties.txt` and is located in the `C:\temp` directory.
2. Verify that the `<BEAHOME>`, `<USER_INSTALL_DIR>`, and other values specified in the properties file are correct and that all requirements have been met. See [“Notes About Silent Mode” on page 3-6](#).
3. Open a command window.
4. Go to the directory that contains the Liquid Data installer `liquiddata_810_win.exe` file you downloaded from the BEA web site.
5. Execute the following command:

```
liquiddata_810_win.exe -f <drive:\path\properties_file_path>
```


Here, `drive` is the letter that identifies the drive being used and `properties_file_path` is the complete pathname of the Liquid Data silent installation properties file.

An example:

```
liquiddata_810_win.exe -f c:\temp\ld_properties.txt
```

You are returned to the command prompt and the Liquid Data installation preparation dialog box is briefly displayed. The installation proceeds in the background with the information specified in the installer properties file.

Note: To verify that the installer is running, open the Windows Task Manager. The installer is listed as the `javaw.exe` process.

Using Silent Mode on a UNIX System

To install Liquid Data using silent mode on a UNIX system:

1. Create the required installer properties file. The content of the file is described in [“Installer Properties File” on page 3-7](#).
2. Verify that the values specified in the properties file are correct and that all requirements have been met. See [“Notes About Silent Mode” on page 3-6](#).
3. Open a command window.
4. Go to the directory that contains the Liquid Data installer `liquiddata_810_solaris.bin` file you downloaded from the BEA web site.
5. Execute the following command at a command line prompt:

```
sh liquiddata_810_solaris.bin -f complete_properties_file_path
```

Where `complete_properties_file_path` is the complete pathname of the properties file. A complete path is required, even if the file resides in the same directory as the `liquiddata_810_solaris.bin` file.

The message `Preparing to Install` is displayed. After the installer decompresses the required files, the installation proceeds with the information specified in the installer properties file. When the process is complete, the message `Installation Complete` is displayed.

Installer Properties File

The required properties are summarized in the following table.

Table 3-1 Installer Properties

Sample Property Setting	Description
INSTALLER_UI=silent	Mode of installation. Set to <code>silent</code> for silent mode.
USER_LOCALE=en	Language selection for installer. Set to <code>en</code> for English.
BEAHOME=d:\\bea BEAHOME=/bea	<p>BEA Home directory. The specified directory must exist on the system. For full installation options that include Liquid Data server, WebLogic Platform version 8.1 must be installed in the specified <code><BEAHOME></code> directory.</p> <p>For Windows, specify the absolute path, including the drive. Backslashes must be escaped.</p> <p>For UNIX, specify the absolute path.</p>
USER_INSTALL_DIR=D:\\bea\\weblogic810\\liquiddata USER_INSTALL_DIR=/bea/weblogic810/liquiddata	<p>Product installation directory.</p> <p>For Windows, specify the absolute path, including the drive. Backslashes must be escaped.</p> <p>For UNIX, specify the absolute path.</p>
CHOSEN_INSTALL_SET=FULL	<p>Type of installation. Specify:</p> <ul style="list-style-type: none"> • FULL. Installs Liquid Data server, Data View Builder client, and samples • Server. Installs Liquid Data server and Data View Builder client. No Samples are installed. • Client. Data View Builder client only installation. No server or Samples are installed.

Next Steps

For all types of installations, you must complete some post-installation tasks before you can work with Liquid Data. See [Chapter 4, “Post-Installation Tasks,”](#) for information on the following important post-install steps:

- [“Verify the Installation by Running the Samples and Starting Data View Builder” on page 4-1](#)
- [“Modifying Data View Builder Start Script for Client-Only Installations” on page 4-3](#)

Installing Liquid Data Using Console or Silent Mode

Post-Installation Tasks

After you install BEA Liquid Data for WebLogic, we suggest that you do the following:

- [Verify the Installation by Running the Samples and Starting Data View Builder](#)
- [Modifying Data View Builder Start Script for Client-Only Installations](#)
- [Work Through the Quick Start Steps](#)
- [Work Through the Quick Start Steps](#)
- [Start Developing Your Own Data Integration Solution](#)
- [Liquid Data Windows Shortcuts and UNIX Paths](#)
- [Uninstalling Liquid Data](#)

For convenience, this topic also describes [“Liquid Data Windows Shortcuts and UNIX Paths”](#) on [page 4-6](#). Finally, if you need to uninstall Liquid Data for any reason, follow the instructions in [“Uninstalling Liquid Data”](#) on [page 4-7](#).

Verify the Installation by Running the Samples and Starting Data View Builder

After you install Liquid Data, you can verify that your installation was successful by starting the Sample server. We suggest that you also take the time to bring up the Data View Builder and connect to the running Samples server. These sections walk you through both tasks:

- [Set Up and Run the Samples](#)

- [Start Data View Builder and Connect to the Samples Server](#)

Set Up and Run the Samples

If you did not load samples during the initial installation, you can do so manually after you have installed Liquid Data. Follow these steps:

1. Run the Samples server.

- On a Windows platform, choose the menu item:

```
Start->Programs -> BEA WebLogic Platform 8.1 -> Liquid Data for  
WebLogic 8.1 -> Liquid Data Samples-> Samples Server
```

- On a UNIX platform, open a command window and change directories to the Samples domain:

```
<WL_HOME>/samples/domains/liquiddata/
```

Run the server by entering the following command at the prompt.

```
sh startWebLogic.sh
```

On Windows two command windows should open:

- A Samples Server command window that displays messages related to starting the server appears.
- A PointBase command window that displays messages relating to the PointBase server.

Note: The following message in the Samples Server command window indicates that the server is up and running: <Server Started in RUNNING Mode>

2. Run the sample application. This is described in [Running the Retail Sample Application in Liquid Data by Example](#).

[Liquid Data by Example](#) contains many other samples and examples.

Start Data View Builder and Connect to the Samples Server

Once you have the Samples server running, you can test the Data View Builder client connection by bringing up the Data View Builder and connecting to the running Samples server.

Note: If you have a client-only installation of the Data View Builder you will need to modify its start script to point to `weblogic.jar` before you can start the Data View Builder. For instructions on how to do this, see [“Modifying Data View Builder Start Script for Client-Only Installations” on page 4-3](#).

To start the Data View Builder and connect to the Samples server, do the following:

1. Start the Data View Builder.

- On a Windows platform, choose the menu item:

```
Start->Programs->BEA WebLogic Platform 8.1->Liquid Data for WebLogic
8.1->Data View Builder
```

You can also start the Data View Builder by double-clicking on the file:

```
<WL_HOME>\liquiddata\DataViewBuilder\bin\DVBuilder.cmd
```

The Data View Builder graphical user interface (GUI) starts up and a login window appears.

2. Connect to your Samples server.

- a. Enter the following address in the Server URI field on the Login window. (No username or password is required here. Leave those fields blank.)

```
t3://localhost:7001
```

- b. Click the Login button.

The Data View Builder desktop and tools are displayed. Relational Databases (RDBMS) is selected on the left navigation panel. The RDBMS data sources are shown. These are the PointBase RDBMS data sources used by the Samples. You can double-click on any of these data sources in the left panel to display their source XML schemas in the Data View Builder workspace.

Modifying Data View Builder Start Script for Client-Only Installations

Data View Builder startup requires the following:

- A copy of WebLogic Server `weblogic.jar` file must be available to the machine on which you installed the Data View Builder.
- Valid path to WebLogic Server file `weblogic.jar` in the Data View Builder start script.
- Valid path to the Java 2 SDK installed with WebLogic Server. The SDK provides the Java run-time environment (JRE) and tools for compiling and debugging Java applications. Options include `JDK141_03`—the 1.4.1 version of the Sun Java 2 SDK that has been tested with Liquid Data.

In a Liquid Data Client-Only installation that includes only Data View Builder, the user must specify these settings manually. (Whereas for install set options that include the Liquid Data server, these are taken care of automatically at install time.)

To configure a client-only system for Data View Builder startup, do the following after install:

Ensure that weblogic.jar is Available on the Client System

If you have not already done so, copy WebLogic Server `weblogic.jar` file onto the system where you installed Data View Builder or make a remote instance of this file available to your local machine by mapping a drive to its location and path.

Modify Data View Builder Start Script for weblogic.jar

To modify the `weblogic.jar` start script, do the following:

1. Find the Data View Builder start script on the system where you installed the Data View Builder.

```
<WL_HOME>\liquiddata\DataViewBuilder\bin\DVBuilder.cmd
```

2. Edit the Data View Builder start script to provide appropriate path for the `weblogic.jar`.

The following code listing ([Listing 4-1](#)) shows the user configuration section of the Data View Builder start script (lines you need to modify are shown in bold).

Modify the setting for the `CLASSPATH` variable so that it points to the local instance of `weblogic.jar`. (The default value provided for `CLASSPATH` will not work for your Client-Only install because `<WL_HOME>` probably does not exist.)

Verify that the Liquid Data Client is Using Same Version of JDK as Server

Note that apart from the requirement for the JDK for use by installer (as detailed in [“Client Installation Prerequisites” on page 1-9](#)), once it is installed the Data View Builder must use the same version of the JDK that the Liquid Data server uses. For the current release, the Liquid Data server uses JDK141_03. For example if Liquid Data server is using:

```
C: /<BEAHOME>/JDK141_03/
```

then the Data View Builder must use this same Java Home.

Listing 4-1 Data View Builder Start Script: User Configuration Section

```

@echo off
setlocal

set BEA_HOME=d:\bea
set JAVA_HOME=d:\bea\jdk141_03
set LD_HOME=d:\bea\weblogic81\liquiddata

set WLS_HOME=d:\bea\weblogic81 // remove or comment out this line
SET CLASSPATH=%WLS_HOME%\server\lib\weblogic.jar // edit this line to point to the
                                                    // correct version of weblogic.jar

set MAIN_CLASS=com.enosysmarkets.querybuilder.gui.Application
set MAIN_JAR=DataViewBuilder.jar
set JVM_PARAMS=-Xmx200M

if defined JAVA goto javaset
    if not defined BEA_HOME goto javadefault
        set JAVA=%JAVA_HOME%\bin\java
        goto javaset
    :javadocefault
        set JAVA=java
        goto javaset
:javaset

: Main jar file (including path)
set MAIN_JAR_FILE=%LD_HOME%\DataViewBuilder\lib\%MAIN_JAR%

: Set the classpath
set FULL_CLASSPATH=%MAIN_JAR_FILE%;%CLASSPATH%

: Run program
%JAVA% %JVM_PARAMS% %JVM_PARAMETERS% -classpath "%FULL_CLASSPATH%" %MAIN_CLASS% %*

endlocal

```

3. Save the modified Data View Builder start script file.

You are now ready to start the Data View Builder as a client-only system. (See [“Start Data View Builder and Connect to the Samples Server” on page 4-2.](#)) Remember that you must have the Liquid Data server running before you start the Data View Builder.

Work Through the Quick Start Steps

Work through the steps in [Getting Started](#), which include:

- Starting the Liquid Data Server.

- Starting the WLS Administration Console and use it to set up a data source.
- Starting the Data View Builder and use it to map source to target XML schemas and construct a query.
- Running the query.
- Saving a project.

Start Developing Your Own Data Integration Solution

Developing your own data integration solution consists of a design phase and an implementation phase. If you want help stepping through the end-to-end process, including design of a business solution, configuration, query construction, JSP presentation, deployment, and using Liquid Data with other BEA products, refer to Liquid Data [Product Overview](#) for an in-depth look at the data integration process and features.

- When you are ready to start setting up and configuring your own data sources, refer to the Liquid Data [Administration Guide](#).
- When you are ready to start mapping source and target XML schemas and constructing queries in the Data View Builder, refer to [Building Queries and Data Views](#).
- When you are ready to create an application such as a Liquid Data-enabled Workshop application, see the [Application Developer's Guide](#).
- When you are ready to deploy your application into a BEA production environment, see the [Deployment Guide](#).

Liquid Data Windows Shortcuts and UNIX Paths

When installing Liquid Data on a Windows system, the installer program uses the BEA WebLogic Platform home directory (<WL_HOME>) as the parent folder for WebLogic Server and BEA Liquid Data. However, on the Start menu BEA Liquid Data shows up under Programs as follows:

Start->Programs->BEA WebLogic Platform 8.1->Liquid Data for WebLogic 8.1

The Liquid Data folder contains the following shortcuts:

- **Liquid Data Samples -> Samples Server**
Starts the Liquid Data Samples server by running the `startWebLogic.cmd` command in the following domain:

<WL_HOME>/samples/domains/liquiddata/

- **Liquid Data Samples -> PointBase Console**

Launches the PointBase database console. In order to access the console, you need to enter the Samples URL such as:

```
jdbc:pointbase:server://localhost:9093/workshop
```

You can determine the URL in use through the WebLogic Administration Console. In the Console select Service -> JDBC -> Connection Pools. All the pools use the same URL.

The default user and password are both `PBPUBLIC`.

For additional information see “[How Do I: Administer the Default PointBase Database](#)” in WebLogic Workshop documentation.

- **Liquid Data Samples -> Sample Application Home**

Launches the Liquid Data Retail Sample Application.

- **Admin Console**

Starts the WebLogic Administration Console for the Liquid Data server that is currently running.

- **Data View Builder**

Launches the Data View Builder.

- **Online Documentation**

Launches the Liquid Data online documentation in your default Web browser. The path to the Liquid Data documentation home page on edocs is:

```
http://edocs.bea.com/liquiddata/docs81/index.html
```

- **Uninstall BEA Liquid Data for WebLogic**

Uninstalls the Liquid Data software. After a full installation, you may need to manually remove some of the sample files that have been placed in:

```
<WL_HOME>/samples/domains/liquiddata/
```

Uninstalling Liquid Data

You can remove the Liquid Data program using the Liquid Data uninstaller and then manually remove the extra files such as installed samples or other user-created files that are not removed automatically removed by the uninstaller.

In cases where you have added Liquid Data to another domain, when you uninstall you must also undeploy before you uninstall. For information on undeploying, see the topic “[Undeploying Deployed Applications](#)” in the WebLogic Server documentation.

Note: The <WL_HOME> directory into which you install a new version of Liquid Data should not contain any files from a previously installed version of Liquid Data.

To uninstall Liquid Data:

1. Run the Liquid Data uninstaller according to the following instructions:

Windows:

```
Start->Programs->BEA WebLogic Platform 8.1->Liquid Data for WebLogic  
8.1->uninstall
```

or run the following command:

```
<WL_HOME>\<LD_HOME>\uninstaller\uninstall.cmd
```

UNIX:

Run the following command:

```
<WL_HOME>/<LD_HOME>/uninstaller/uninstall
```

(Use this uninstall option if you installed via GUI mode as described in [Chapter 2, “Installing Liquid Data Using GUI Mode.”](#))

or

```
<WL_HOME>/<LD_HOME>/uninstaller/uninstall -i CONSOLE
```

(Use this uninstall option with “-i CONSOLE” if you installed via Console mode as described in [Chapter 3, “Installing Liquid Data Using Console or Silent Mode.”](#))

Note: When the uninstall is complete you will likely be notified that some files that could not be removed by the automated uninstall. This could be a result of new files that were generated or user-created after Liquid Data was installed. For example if you added new target schemas, stored queries, Web services, and so on to the Liquid Data repository, the uninstaller will not remove these files. If you need these files, be sure to save them elsewhere before proceeding to the next step.

2. To remove leftover files, manually delete the Liquid Data domain directory. To do this, remove the following directories:

- Liquid Data home directory:

Windows:

```
<WL_HOME>\<LD_HOME>
```

UNIX:

<WL_HOME>/<LD_HOME>

- Liquid Data samples directory

Windows:

<WL_HOME>\samples\liquiddata

UNIX:

<WL_HOME>/<LD_HOME>/samples/liquiddata

- Liquid Data samples domain directory

Windows:

<WL_HOME>\<LD_HOME>\samples\domains\liquiddata

UNIX:

<WL_HOME>/<LD_HOME>/samples/domains/liquiddata

Post-Installation Tasks

Index

B

BEA_HOME, default path 1-9
browsers, supported 1-3

C

customer support contact information -x

D

Data View Builder
 server URI 4-2
 starting 4-2
database support 1-2
documentation, where to find it -x

E

environment variables
 BEA_HOME 1-9
 WL_HOME 1-11

I

installation, verifying 4-1

J

JDK required 1-2

M

memory requirements 1-2

P

platform support 1-2
printing product documentation -x

R

related information -x

S

samples, setting up and running 4-2
server requirements 1-3
silent installation
 on UNIX 3-7
 on Windows 3-6
support
 technical -x

U

uninstalling Liquid Data 4-7

V

verifying a successful installation 4-1

W

WebLogic server requirements 1-3
WL_HOME, default path 1-11

