



BEA eLink™ Adapter for Mainframe

Installation Guide

Version 4.1
Document Date: December 2001

Copyright

Copyright © 2001 BEA Systems, Inc. All Rights Reserved.

Restricted Rights Legend

This software and documentation is subject to and made available only pursuant to the terms of the BEA Systems License Agreement and may be used or copied only in accordance with the terms of that agreement. It is against the law to copy the software except as specifically allowed in the agreement. This document may not, in whole or in part, be copied photocopied, reproduced, translated, or reduced to any electronic medium or machine readable form without prior consent, in writing, from BEA Systems, Inc.

Use, duplication or disclosure by the U.S. Government is subject to restrictions set forth in the BEA Systems License Agreement and in subparagraph (c)(1) of the Commercial Computer Software-Restricted Rights Clause at FAR 52.227-19; subparagraph (c)(1)(ii) of the Rights in Technical Data and Computer Software clause at DFARS 252.227-7013, subparagraph (d) of the Commercial Computer Software--Licensing clause at NASA FAR supplement 16-52.227-86; or their equivalent.

Information in this document is subject to change without notice and does not represent a commitment on the part of BEA Systems. THE SOFTWARE AND DOCUMENTATION ARE PROVIDED "AS IS" WITHOUT WARRANTY OF ANY KIND INCLUDING WITHOUT LIMITATION, ANY WARRANTY OF MERCHANTABILITY OR FITNESS FOR A PARTICULAR PURPOSE. FURTHER, BEA Systems DOES NOT WARRANT, GUARANTEE, OR MAKE ANY REPRESENTATIONS REGARDING THE USE, OR THE RESULTS OF THE USE, OF THE SOFTWARE OR WRITTEN MATERIAL IN TERMS OF CORRECTNESS, ACCURACY, RELIABILITY, OR OTHERWISE.

Trademarks or Service Marks

BEA, Jolt, Tuxedo, and WebLogic are registered trademarks of BEA Systems, Inc. BEA Builder, BEA Campaign Manager for WebLogic, BEA eLink, BEA Manager, BEA WebLogic Commerce Server, BEA WebLogic E-Business Platform, BEA WebLogic Enterprise, BEA WebLogic Express, BEA WebLogic Integration, BEA WebLogic Personalization Server, BEA WebLogic Portal, BEA WebLogic Server and How Business Becomes E-Business are trademarks of BEA Systems, Inc.

All other trademarks are the property of their respective companies.

BEA eLink[™] Adapter for Mainframe Installation Guide

Part Number	Date	Software Version
825-001006-005	December 2001	4.1

Contents

About This Document

What You Need to Know	v
e-docs Web Site	v
How to Print the Document.....	vi
Documentation Conventions	vii

1. Preparing to Install eLink Adapter for Mainframe

Determining Your Configuration	1-1
Local Configuration	1-2
Distributed Configurations	1-4
Determining Requirements for Other Components.....	1-5
Mainframe Requirements	1-6
Non-Mainframe Requirements.....	1-6
Installing the Prerequisite Software.....	1-7

2. Installing the eLink Adapter for Mainframe Software

Prerequisites for Installation.....	2-2
Installing the CRM on z/OS or OS/390 Platforms	2-2
Installing the CRM on a z/OS or OS/390 UNIX Platform.....	2-2
Installing the CRM on a z/OS or OS/390 MVS Platform	2-5
Summary of Installation Tasks	2-5
Installation Procedure	2-6
Installing the Gateway on AIX, HP-UX, Solaris 7, or Windows.....	2-9
Installing the Gateway in Console Mode	2-10
Installing the Gateway in Graphics Mode.....	2-13
Installing eLink Adapter for Mainframe Components on Solaris 8	2-21
Installing the Software in Console Mode	2-21

Installing the Software in Graphics Mode.....	2-25
Validating the eLink Adapter for Mainframe Software Installation	2-33
Verifying Installation Files and Directories	2-33
eLink Adapter for Mainframe Gateway Installation Files and Directories	2-34
CRM Installation Files and Directories.....	2-42
Solaris 8 Full Installation Files and Directories	2-45
Running the Sample Applications	2-47
Uninstalling eLink Adapter for Mainframe	2-47
Uninstalling on Non-mainframe UNIX Platforms in Console Mode.....	2-47
Uninstalling on Windows Platform	2-49
Uninstalling on z/OS or OS/390 Platforms	2-50
Manually Setting Up the License Key.....	2-51

About This Document

This document provides instructions for installing BEA eLink Adapter for Mainframe software.

This document covers the following topics:

- [“Preparing to Install eLink Adapter for Mainframe”](#)
- [“Installing the eLink Adapter for Mainframe Software”](#)

What You Need to Know

This document is intended for system administrators and application programmers who will install and configure the eLink Adapter for Mainframe product.

e-docs Web Site

BEA product documentation is available on the BEA corporate Web site. From the BEA Home page, click on Product Documentation or go directly to the “e-docs” Product Documentation page at <http://e-docs.bea.com>.

How to Print the Document

You can print a copy of this document from a Web browser, one file at a time, by using the File—>Print option on your Web browser.

A PDF version of this document is available on the eLink Adapter for Mainframe documentation Home page on the e-docs Web site (and also on the documentation CD). You can open the PDF in Adobe Acrobat Reader and print the entire document (or a portion of it) in book format. To access the PDFs, open the eLink Adapter for Mainframe documentation Home page, click the PDF files button and select the document you want to print.

If you do not have the Adobe Acrobat Reader, you can get it free of charge from the Adobe Web site at <http://www.adobe.com/>.

Related Information

The following documents contain information that is relevant to using eLink Adapter for Mainframe:

- *BEA eLink Adapter for Mainframe Release Notes*
- *BEA eLink Adapter for Mainframe Installation Guide*
- *BEA eLink Adapter for Mainframe CRM Administration Guide*
- *BEA eLink Adapter for Mainframe User Guide*
- *BEA eLink Adapter for Mainframe Reference Guide*

Contact Us

Your feedback on the eLink Adapter for Mainframe documentation is important to us. Send us e-mail at docsupport@bea.com if you have questions or comments. Your comments will be reviewed directly by the BEA professionals who create and update the eLink Adapter for Mainframe documentation.

In your e-mail message, please indicate that you are using the documentation for the eLink Adapter for Mainframe 4.1 release.

If you have any questions about this version of eLink Adapter for Mainframe, or if you have problems installing and running eLink Adapter for Mainframe, contact BEA Customer Support through BEA WebSupport at www.bea.com. You can also contact Customer Support by using the contact information provided on the Customer Support Card, which is included in the product package.

When contacting Customer Support, be prepared to provide the following information:

- Your name, e-mail address, phone number, and fax number
- Your company name and company address
- Your machine type and authorization codes
- The name and version of the product you are using
- A description of the problem and the content of pertinent error messages

Documentation Conventions

The following documentation conventions are used throughout this document.

Convention	Item
<i>blue text</i>	Indicates a hypertext link in PDF or HTML
<i>italics</i>	Indicates emphasis or book titles or variables.

Convention	Item
"string with quotes"	Indicates a string entry that requires quote marks.
UPPERCASE TEXT	Indicates generic file names, device names, environment variables, and logical operators. <i>Examples:</i> LPT1 SIGNON OR
monospace text	Indicates code samples, commands and their options, data structures and their members, data types, directories, and file names and their extensions. Monospace text also indicates text that you must enter from the keyboard. <i>Examples:</i> #include <iostream.h> void main () the pointer psz chmod u+w * \tux\data\ap .doc tux.doc BITMAP float
monospace boldface text	Identifies significant words in code. <i>Example:</i> void xa_commit ()
{ }	Indicates a set of choices in a syntax line. The braces themselves should never be typed.
[]	Indicates optional items in a syntax line. The brackets themselves should never be typed. <i>Example:</i> buildclient [-v] [-o name] [-f <i>file-list</i>]... [-l <i>file-list</i>]...
	Separates mutually exclusive choices in a syntax line. The symbol itself should never be typed.

Convention	Item
...	<p>Indicates one of the following in a command line:</p> <ul style="list-style-type: none">■ That an argument can be repeated several times in a command line■ That the statement omits additional optional arguments■ That you can enter additional parameters, values, or other information <p>The ellipsis itself should never be typed.</p> <p><i>Example:</i></p> <pre>buildclient [-v] [-o name] [-f file-list]... [-l file-list]...</pre>
. . .	<p>Indicates the omission of items from a code example or from a syntax line.</p> <p>The vertical ellipsis itself should never be typed.</p>



1 Preparing to Install eLink Adapter for Mainframe

This section contains information to help you prepare to install BEA eLink Adapter for Mainframe software. To ensure successful installation and operation of the eLink Adapter for Mainframe software, complete the tasks described in this section.

This section contains the following topics:

- [“Determining Your Configuration”](#)
- [“Determining Requirements for Other Components”](#)
- [“Installing the Prerequisite Software”](#)

Note: All references to ATMI files, functions, and documentation apply to Tuxedo files, functions, and documentation.

Determining Your Configuration

You must consider configuration as you prepare to install the eLink Adapter for Mainframe software. The normal eLink Adapter for Mainframe environment includes two properly configured components: the eLink Adapter for Mainframe Gateway and

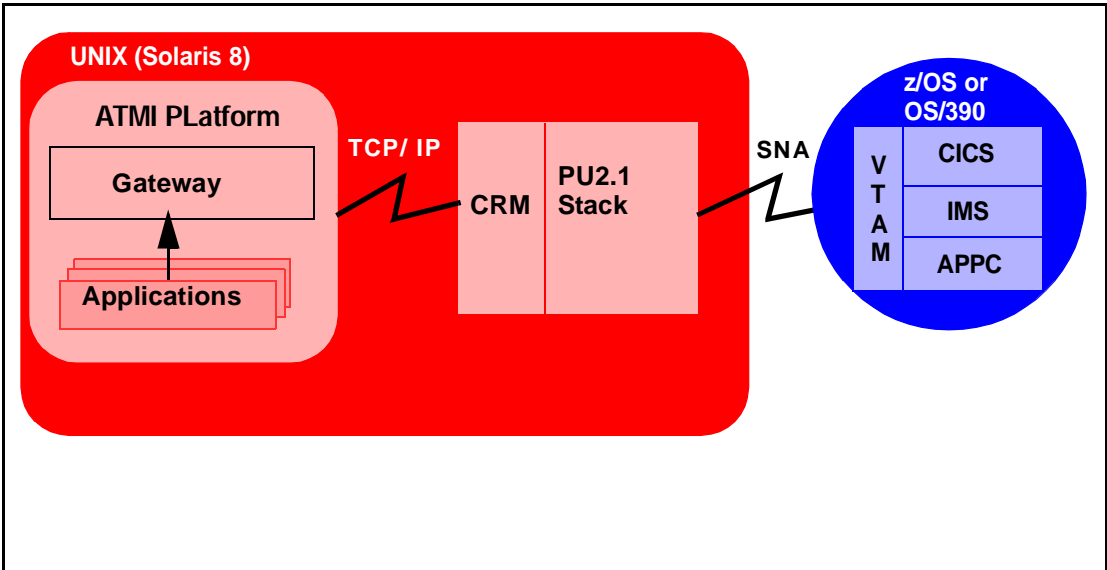
the Communications Resource Manager (CRM). The type of network connectivity you are working with determines which type of CRM installation and configuration is required.

When the eLink Adapter for Mainframe Gateway and CRM are installed on the same machine, the installation is referred to as a local (combined) configuration. When these components are installed on different UNIX, Windows, or mainframe platforms, the installation is referred to as a distributed (or remote) configuration. The diagrams in the following sections show examples of the eLink Adapter for Mainframe components in three types of configurations.

Local Configuration

Local configuration installs the application, the eLink Adapter for Mainframe Gateway, the Application-to-Transaction Monitor Interface (ATMI) platform, and the CRM with the stack on the same UNIX platform. In this case, the UNIX platform is Solaris 8 because this is the only non-mainframe UNIX platform that the CRM supports. This configuration uses the IBM proprietary SNA protocol for transactions with the mainframe via the stack. This configuration requires a one-to-one relationship between the local eLink Adapter for Mainframe Gateway and the CRM.

Figure 1-1 Local Configuration

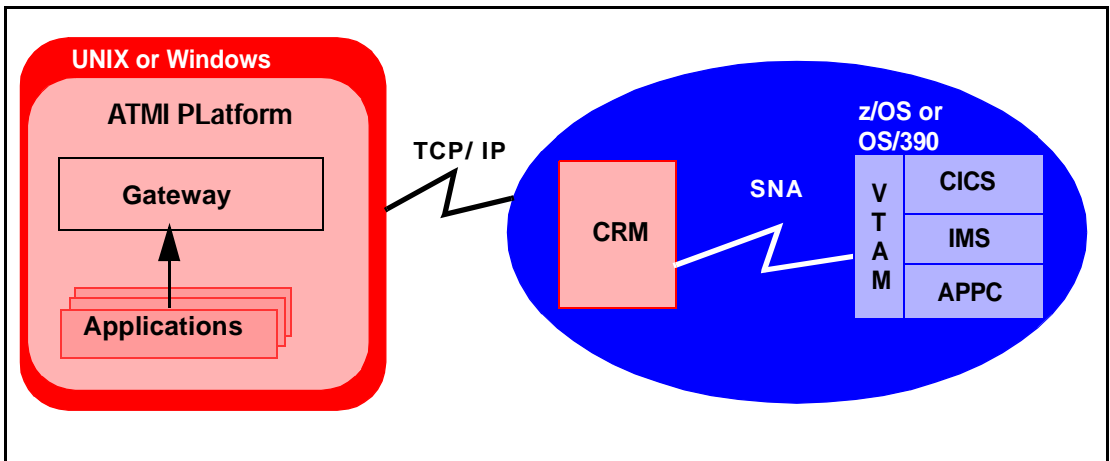


Distributed Configurations

In a distributed configuration, the CRM is installed on a different platform than the eLink Adapter for Mainframe Gateway and applications.

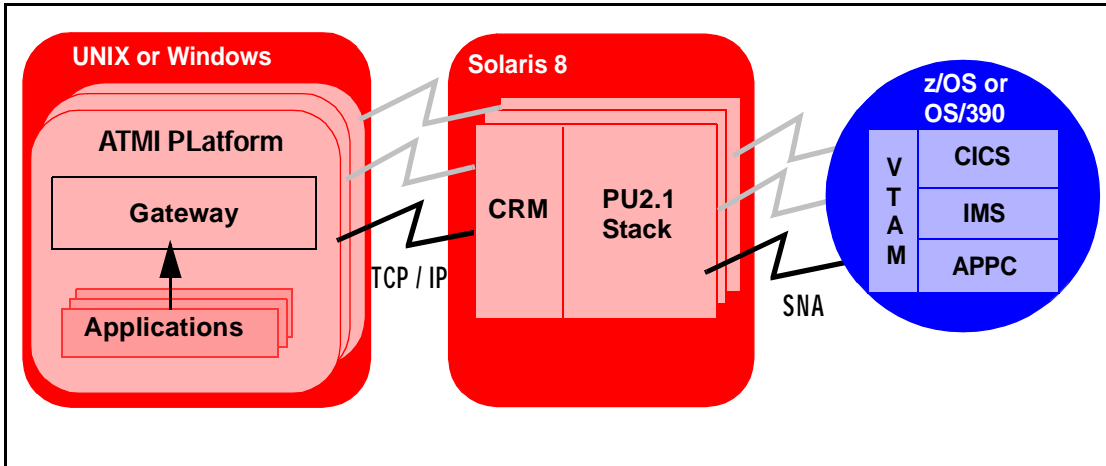
One type of distributed configuration separates applications and the eLink Adapter for Mainframe Gateway from the CRM by installing the CRM to the z/OS or OS/390 mainframe. This configuration eliminates the need for a third-party stack on the UNIX machine. This configuration requires a one-to-one relationship between the local eLink Adapter for Mainframe Gateway and the remote CRM.

Figure 1-2 Distributed Configuration



Another type of distributed configuration separates applications and the eLink Adapter for Mainframe Gateway from the CRM on different UNIX or Windows-based platforms. In this case, the platform for the CRM would be Solaris 8 because Solaris 8 is the only non-mainframe UNIX platform that the CRM supports. This configuration uses Transmission Control Protocol/Internet Protocol (TCP/IP) connectivity between the eLink Adapter for Mainframe Gateway and the CRM, as well as the SNA connectivity to the mainframe environment(s). This configuration provides the flexibility to deploy the ATMI platform separately from the CRM in installations that require the ATMI platform on an operating system other than the one on which the SNA stack is running. This configuration also requires a one-to-one relationship between the local eLink Adapter for Mainframe Gateway and the remote CRM.

Figure 1-3 Alternate Distributed Configuration



Determining Requirements for Other Components

Whether your eLink Adapter for Mainframe software is installed on Windows, UNIX, or a mainframe, make sure your system meets the appropriate requirements and that supporting software is operating correctly. The following sections describe mainframe and non-mainframe requirements, and verification of supporting software installations.

Note: Because eLink Adapter for Mainframe interacts with mainframe applications, involve your mainframe system support personnel early in the process of planning and installing your eLink Adapter for Mainframe software. Different individuals may be responsible for Multiple Virtual System (MVS), Virtual Telecommunications Access Method (VTAM), Information Management System (IMS), and Customer Information Control System/Enterprise Systems Architecture (CICS/ESA). Make sure everyone is involved.

Mainframe Requirements

Whether the CRM component of eLink Adapter for Mainframe is located on the mainframe environment or not, mainframe configurations affect how eLink Adapter for Mainframe software functions. Prepare the mainframe to conduct operations within the eLink Adapter for Mainframe/ATMI platform environment by:

- Establishing the VTAM configuration
- Configuring the CICS/ESA Logical Unit (LU) by defining proper connections and sessions
- Completing cross-platform definitions for non-mainframe CRM
- Ensuring that APPC and transaction definitions exist for that environment, if using IMS or APPC/MVS

Refer to the *BEA eLink Adapter for Mainframe CRM Administration Guide* for detailed information about these tasks.

Non-Mainframe Requirements

A non-mainframe environment is a UNIX or Windows machine running the eLink Adapter for Mainframe software. The software is fully bidirectional, supporting the local system as either a client or server. This environment consists of the following components:

- Hardware, defined as any workstation and network interface supported by the required software.
- Operating system software and SNA protocol stacks (PU servers) if the CRM is not installed on the mainframe. (Refer to the *eLink Adapter for Mainframe Release Notes* for a complete listing.) Stack installation should also be completed and verified. Refer to vendor documentation for stack installation and verification information.
- Tuxedo ATMI platform. Refer to the *BEA eLink Adapter for Mainframe Release Notes* for information on platform support.

Note: The Tuxedo ATMI platform is not required if you are installing the CRM only on Solaris 8.

Installing the Prerequisite Software

The following software should be installed and configured prior to installing the eLink Adapter for Mainframe software for UNIX or Windows:

1. If you are installing the CRM on Solaris 8:
 - a. Install a supported SNA stack on the operating system where the CRM will be installed. Validate the stack software installation, running any sample applications provided by the vendor.
 - b. Configure the supported SNA stack.

Refer to the *eLink Adapter for Mainframe Release Notes* for a list of supported SNA stacks.

Note: Refer to the SNA stack vendor's documentation on configuring your environment. A properly configured SNA protocol stack is required for the CRM to communicate with the mainframe application.

2. Install and configure the Tuxedo ATMI platform. Validate the software installation by running the sample applications, such as `simpapp` or `bankapp`.

Refer to the corresponding product installation documentation for installation and configuration information. Some specific configuration tasks must be completed before you install eLink Adapter for Mainframe.

3. Shut down all domain administrative and gateway servers within an application domain prior to installing eLink Adapter for Mainframe software, particularly the following:

- GWTDOMAIN
- GWADM
- DMADM

Do not run the following commands until the installation is complete:

- `dmadmin`
- `dmloadcf`
- `dmunloadcf`

1 *Preparing to Install eLink Adapter for Mainframe*

Upon completion of these tasks, continue to ["Installing the eLink Adapter for Mainframe"](#) for instructions on installing the eLink Adapter for Mainframe software.

2 Installing the eLink Adapter for Mainframe Software

This section provides information and step-by-step instructions for installing BEA eLink Adapter for Mainframe software. After completing the tasks included in [“Preparing to Install eLink Adapter for Mainframe,”](#) install the eLink Adapter for Mainframe components according to your configuration requirements as described in the following section.

Notes: Refer to the *BEA eLink Adapter for Mainframe Release Notes* if you are upgrading from a previous version of eLink Adapter for Mainframe, and for information about hardware and software requirements. For additional operational and administrative information on the CRM, refer to the *BEA eLink Adapter for Mainframe CRM Administration Guide*.

All references to ATMI files, functions, and documentation apply to Tuxedo files, functions, and documentation.

Information topics are grouped by platform and by component (Gateway or CRM) if the component installations differ for particular platforms.

This section includes the following topics:

- [“Prerequisites for Installation”](#)
- [“Installing the CRM on z/OS or OS/390 Platforms”](#)
- [“Installing the Gateway on AIX, HP-UX, Solaris 7, or Windows”](#)

- [“Installing eLink Adapter for Mainframe Components on Solaris 8”](#)
- [“Validating the eLink Adapter for Mainframe Software Installation”](#)
- [“Uninstalling eLink Adapter for Mainframe”](#)
- [“Manually Setting Up the License Key”](#)

Prerequisites for Installation

Before you install BEA eLink Adapter for Mainframe, you should install Tuxedo 8.

Warning: If you are installing BEA eLink Adapter for Mainframe on AIX, rename the `jre130` directory to `jre`. The `jre130` directory was installed in your BEA Home directory at the same level as Tuxedo 8.

Installing the CRM on z/OS or OS/390 Platforms

The CRM may be installed on mainframe platforms as described in the following sections:

- [“Installing the CRM on a z/OS or OS/390 UNIX Platform”](#)
- [“Installing the CRM on a z/OS or OS/390 MVS Platform”](#)

Installing the CRM on a z/OS or OS/390 UNIX Platform

This section explains how to install the CRM component on a z/OS or OS/390 UNIX platform.

Note: This procedure assumes you are familiar with File Transfer Protocol (FTP) functions.

1. Load the product CD-ROM on a machine that has File Transfer Protocol (FTP) access to the z/OS or OS/390 host.

2. Put the `os390.tar` file (in binary mode) from the root directory on the CD-ROM to the working directory on the z/OS or OS/390 host.

3. To extract the installation script from the tar file, use the following command:

```
tar xvfo os390.tar
```

Executing the `tar` command extracts the `install.sh` script and subdirectories containing the software to be installed.

4. Execute the `install.sh` script using the following command.

```
sh install.sh
```

5. The installation script prompts you for responses. [Listing 2-1](#) is a sample installation. It shows the installation of the CRM in a distributed configuration on an OS/390 UNIX mainframe platform. User responses are indicated in bold.

Listing 2-1 Sample OS/390 UNIX Installation

```
install.sh
```

```
01) os390/os390r8
```

```
Install which platform's files? [01- 1 , q to quit, l for list]: 1
```

```
** You have chosen to install from os390/os390r8 **
```

```
Communications Resource Manager Release 4.1
```

```
This directory contains the Communications Resource Manager 4.1  
for IBM OS/390 Unix R8 on IBM OS/390.
```

```
Is this correct? [y,n,q]: y
```

```
To terminate the installation at any time  
press the interrupt key,  
typically <del>, <break>, or <ctrl+c>.
```

```
The following packages are available:
```

2 *Installing the eLink Adapter for Mainframe Software*

```
1      crm                      Communications Resource Manager

Select the package(s) you wish to install (or 'all' to install
all packages) (default: all) [?,??,q]: 1

Communications Resource Manager
(OS390) Release 4.1
Copyright (c) 2000 BEA Systems, Inc.
All Rights Reserved.
Distributed under license by BEA Systems, Inc.
BEA eLink is a trademark of BEA Systems, Inc.

Directory where Communications Resource Manager files are to be
installed

(Enter your directory path) [?,q]: /work/tmp

Using /work/tmp as the Communications Resource Manager base
directory

The following CRM stack support options are available:

1      vtm28                    OpenEdition MVS 390

Select an option [?,??,q]: 1

Determining if sufficient space is available ...
46648 blocks are required
8529000 blocks are available to /work/tmp

Unloading /bea/os390/os390r8/crm/CRMSA.Z ...
4665 blocks
x bin/CRM
x bin/CRMLLOGS
x bin/crmdown
x bin/crmlkoff
x bin/crmlkon
x bin/uss.env
x lib/csxappc.dll
x lib/csxcrm.dll
x lib/csxgpw.dll
x lib/csxsrm.dll
x lib/csxxcrm.dll
x lib/csxxfm.dll
x lib/csxxmw.dll
x lib/ctxos_12.dll
x lib/ctxplat_12.dll
x lib/ctxprim_12.dll
```

```
x lib/libgp40.dll
x lib/libgpnet.dll
... finished

Unloading /bea/os390/os390r8/crm/STKSA.Z ...
233 blocks
x lib/csxvtm28.dll
... finished

Changing file permissions...
... finished

Installation of Communications Resource Manager was successful
Please don't forget to fill out and send in your registration card
```

Installing the CRM on a z/OS or OS/390 MVS Platform

This section explains how to install the CRM component on a z/OS or OS/390 Multiple Virtual Storage (MVS) platform.

Note: The installation process assumes the installer is familiar with Job Control Language (JCL) job operations and File Transfer Protocol (FTP) functions.

Summary of Installation Tasks

The following list is a summary of the tasks detailed in "[Installation Procedure](#)":

- Put the JCL files in the MVS environment prior to installation using the FTP program.
- Allocate the initial datasets using one of the JCL jobs.
- FTP the product software files (EAM41.xxx) to the allocated datasets.
- Run the second JCL job to allocate the final datasets.
- Run the TSO RECEIVE command to unload the data in your product datasets. A third JCL file has been provided to run this procedure in batch.

The installation for this environment is semi-automated. Three JCL files are provided to facilitate prerequisites for allocating datasets in the MVS environment and to unload eLink Adapter for Mainframe product software into the allocated datasets.

2 *Installing the eLink Adapter for Mainframe Software*

The product CD-ROM contains the following files relating to this installation procedure:

- `README` file contains notes on how to install the product in this environment. This is a summary of the procedure in this section.
- `dsupload.jcl` file is a JCL example for creating MVS datasets to receive the eLink Adapter for Mainframe software.
- `install.jcl` file is a JCL example creating the unloaded product datasets.
- `uncmpress.jcl` file is a JCL example to uncompress and unload into the product datasets.
- `EAM41.LOAD` file contains the eLink Adapter for Mainframe program objects. (Required)
- `EAM41.DATA` file contains eLink Adapter for Mainframe data files. (Required)
- `EAM41.SAMPLE` file contains sample JCL files.

Installation Procedure

Perform the following steps to install the CRM component on a z/OS or OS/390 MVS platform:

1. Load the product CD-ROM on a machine that has File Transfer Protocol (FTP) access to the MVS UNIX directory (`/mvs/ftp-unix`) or MVS NT directory (`/mvs.ftp-nt`).
2. Use FTP to put the following JCL files in the MVS destination PDS dataset:
`dsupload.jcl`
`install.jcl`
`uncmprss.jcl`
3. In your MVS environment, change the `DSUPLOAD` job to suit your environment. This job allocates the initial datasets needed to receive the product software files from the FTP file transfer.

Use the `SET` statements in the `DSUPLOAD` job to set the high-level qualifiers of the receiving datasets according to the following syntax:

```
SET PRODHQ=[QUALIFIER]
```


The DSUPLOAD job has the following steps:

DELOLD

Deletes any existing datasets previously created so you can run this JCL multiple times, if necessary.

CREATE

Allocates the initial datasets needed to receive the product software files.

4. Run the DSUPLOAD job.
5. Put the files listed in [Table 2-1](#) into their corresponding datasets. Use the table as a worksheet and fill in the names you created in step 3. Use the worksheet as a guide for transferring the product data to the z/OS or OS/390 platform.

Table 2-1 MVS Installation Product Files and DD Name Datasets

Product File	Set Statement	Your Dataset Name
EAM41.LOAD	PRODHLQ	.LOAD
EAM41.DATA	PRODHLQ	.DATA
EAM41.SAMPLE	PRODHLQ	.SAMPLE

6. From the UNIX/NT command prompt, set binary data transfer mode using the FTP program.

Note the following example of a put command:

```
put EAM41.LOAD 'BEA.EAM41.LOAD'
```

Transfer the datasets using the put command.

7. In your MVS environment, change the INSTALL job to suit your environment.

Use the SET statements to alter the job for your environment according to the following syntax:

```
SET BEAPDSE=[QUALIFIER]
```

In this statement, [QUALIFIER] is the high-level qualifier for the SNACRM Load Library. The load library containing the EAM41.LOAD program objects must be a Partitioned Dataset with Extended attributes (PDSE). The PDSE minimally must have storage class SMS declaration for z/OS or OS/390.

2 Installing the eLink Adapter for Mainframe Software

SET SCLASS= [CLASS NAME]

In this statement, [CLASS NAME] is the storage class name of the PDSE.
This is required for z/OS or OS/390.

SET BEAPDS= [QUALIFIER]

In this statement, [QUALIFIER] is the high-level qualifier for the sample and data datasets. These are standard PDS.

The INSTALL job has the following steps:

DELOLD

Deletes any existing datasets created by the INSTALL job so you can run this JCL multiple times, if necessary.

CREATE

Creates the MVS datasets for you.

This step includes the minimal JCL needed to create the datasets for z/OS or OS/390. You may change the JCL to reflect your own environment.

8. Run the INSTALL job.

Use [Table 2-2](#) as a worksheet to fill out the names of the datasets created in this step.

Table 2-2 Set Statements and Corresponding Datasets

Set Statement	Your Dataset Name
BEAPDSE	. LOAD
BEAPDS	. DATA
BEAPDS	. SAMPLE

9. In your MVS environment, change the UNCMRSS job to suit your environment.

Modify the following variables in the JCL to the high-level qualifier you listed in the tables according to the following syntax:

<PRODHLQ>= [QUALIFIER]

Use the qualifier you listed in [Table 2-1](#).

<BEAPDSE>= [QUALIFIER]

Use the PDSE qualifier you listed in [Table 2-2](#).

<BEAPDS>= [QUALIFIER]

Use the PDS qualifier you listed in [Table 2-2](#).

The UNCMRSS job has the following step:

UNLOAD

Performs a TSORECEIVE to uncompress and unload the data in your installation datasets created in step 8.

To manually perform the TSO RECEIVE command to unload the data in your installation datasets created in Step 8, enter a command similar to the following command:

```
TSO RECEIVE INDS ('xxx')
```

When prompted, enter:

```
DA ('yyy')
```

In these statements, the following definitions apply:

xxx

Is the dataset name you listed in [Table 2-1](#).

yyy

Is the corresponding dataset name you listed in [Table 2-2](#).

Installing the Gateway on AIX, HP-UX, Solaris 7, or Windows

In addition to Solaris 8 installation as described in [“Installing eLink Adapter for Mainframe Components on Solaris 8”](#), the eLink Adapter for Mainframe Gateway may also be installed on AIX, HP-UX, Solaris 7, or Windows platforms.

Note: The CRM is not available on any of these platforms and can only be installed on Solaris 8 non-mainframe UNIX. Refer to the *BEA eLink Adapter for Mainframe Release Notes* for more detailed information about platform support.

AIX, HP-UX, and Solaris 7 installations may be performed in Console Mode or Graphics Mode, while Windows installations must be performed in Graphics Mode.

Installing the Gateway in Console Mode

To install the eLink Adapter for Mainframe Gateway on non-mainframe UNIX in console mode, you run one of the following `.bin` programs as appropriate for your operating system:

UNIX Platform	.bin File
AIX 4.3.3	eam41_Aix.bin
HP-UX 11	eam41_Hp.bin
Solaris 7	eam41_Sol7.bin

Perform the following steps to install the eLink Adapter for Mainframe software in console mode:

1. Insert the eLink Adapter for Mainframe CD-ROM in your CD device.
2. Log on as root.

```
$ su -
Password:
```
3. Mount the CD-ROM. Mount commands vary depending on your system configuration. Refer to your System Administrator for the specific command for your system. Use a command similar to the following example to mount the CD-ROM.

```
# mount -r -F cdfs /dev/cdrom/clb0t0l0 /mnt
```
4. Change the directory to the `unix` directory on your CD-ROM device. For example,

```
# cd /mnt/eam41
```

5. List the CD-ROM contents.

```
# ls
```

```
eam41_Aix.bin  
eam41_Hp.bin  
eam41_Sol7.bin  
eam41_Sol8.bin  
eam41_Win.exe  
os390.tar  
mvs
```

6. Execute the appropriate installation program for your operating system in character-based mode. For example, execute the HP-UX 11 program to install only the eLink Adapter for Mainframe Gateway:

```
# sh eam41_Hp.bin -i console
```

7. The installation program runs and prompts you for responses (see [Listing 2-2](#) for an example).

Listing 2-2 UNIX Console Mode Installation Example, Gateway on HP-UX 11

```
Preparing to install...
```

```
Preparing CONSOLE Mode Installation...
```

```
=====
BEA eLink Adapter for Mainframe          (created with InstallAnywhere by Zero G)
-----
```

```
=====
Introduction
-----
```

```
This installer will guide you through the installation of 'eLink Adapter for
Mainframe'. On each step, answer the questions provided. Type "quit" at any
time to exit the installer.
```

```
=====
License Agreement
-----
```

```
Please read before installing:
```

```
BEA eLink Adapter for Mainframe(r) 4.1 Software License
```

2 *Installing the eLink Adapter for Mainframe Software*

The Software and accompanying documentation (respectively "Software" and "Documentation") you have acquired are protected by the copyright laws of the United States and international copyright treaties...

.
.
.

User Count means the number of users specified on the uniform product code label provided on the outside packaging of the Product.

Connection Management Software means...

.
.
.

Copyright 2001, BEA Systems, Inc. All Rights Reserved.

DO YOU AGREE WITH THE TERMS OF THE LICENSE? (Y/N): **y**

=====

Choose BEA Home Directory

- 1- Create a New BEA Home
- 2- Use Existing BEA Home

Enter a number: 2

- 1- /bea/
- 2- /bea/Tuxedo 8.0

Existing BEA Home: 1

=====

Installing...

[=====]	[=====]	[=====]	[=====]
[-----]	[-----]	[-----]	[-----]

=====

License Selection Option

- 1- Copy License File Now
- 2- Copy License File Later

Enter a number: 2

=====

Install License Later.

You will need to manually append lic.txt (on license diskette) to your base product license file (in udataobj directory). Refer to your BEA eLink Adapter for Mainframe Installation Guide for details on how to do this.

```
=====
Install Complete
-----
```

Congratulations. 'eLink Adapter for Mainframe' has been successfully installed to:

/bea/loads/tux80

PRESS <ENTER> TO EXIT THE INSTALLER: **ENTER**

Installing the Gateway in Graphics Mode

Perform the following steps to install the eLink Adapter for Mainframe Gateway on a Windows or UNIX platform in Graphics Mode:

1. Insert the eLink Adapter for Mainframe CD-ROM in your CD device.
2. Do one of the following, depending on your platform:

On Windows:

- a. Choose Start→Run. The Run dialog displays.
- b. Click Browse to navigate to the CD-ROM drive.
- c. Select the eam41 directory; then, select the eam41_Win.exe program.
- d. Click Open. The selected path and executable appear in the Run dialog.
- e. Click OK to begin the installation. The Introduction screen ([Figure 2-1](#)) displays.

Note: All screen illustrations in this section are for Windows NT.

On UNIX:

- a. Log on as root to install the eLink Adapter for Mainframe software.

2 *Installing the eLink Adapter for Mainframe Software*

```
$ su -  
Password:
```

- b. Mount the CD-ROM. Mount commands vary depending on your system configuration. Refer to your System Administrator for the specific command for your system. Use a command similar to the following command to mount the CD-ROM on any UNIX system.

```
> mount -r -F cdfs /dev/cdrom/c1b0t0l0 /mnt
```

- c. Change the directory to the eam41 directory on your CD-ROM device. For example,

```
> cd /mnt/eam41
```

- d. List the CD-ROM contents.

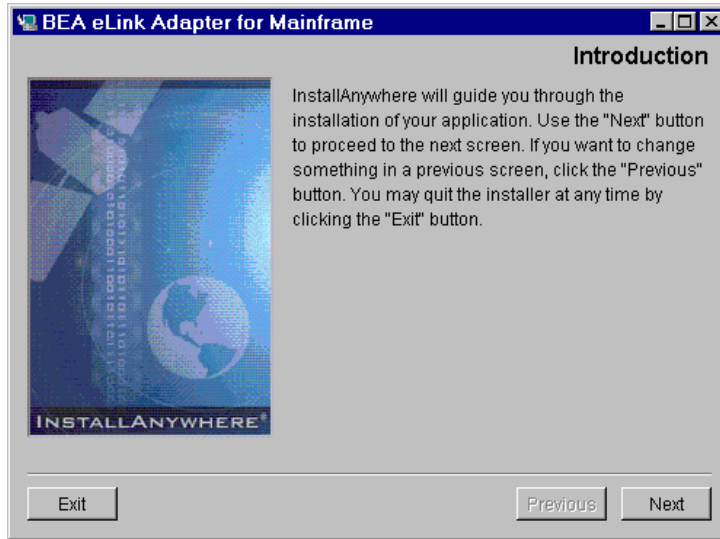
```
# ls  
eam41_Aix.bin  
eam41_Hp.bin  
eam41_Sol7.bin  
eam41_Sol8.bin  
os390.tar  
mvs
```

- e. Execute the appropriate installation program for your operating system. For example, execute the AIX program:

```
/mnt/eam41> sh eam41_Aix.bin
```

The Introduction screen (similar to [Figure 2-1](#)) displays.

Figure 2-1 Introduction Screen



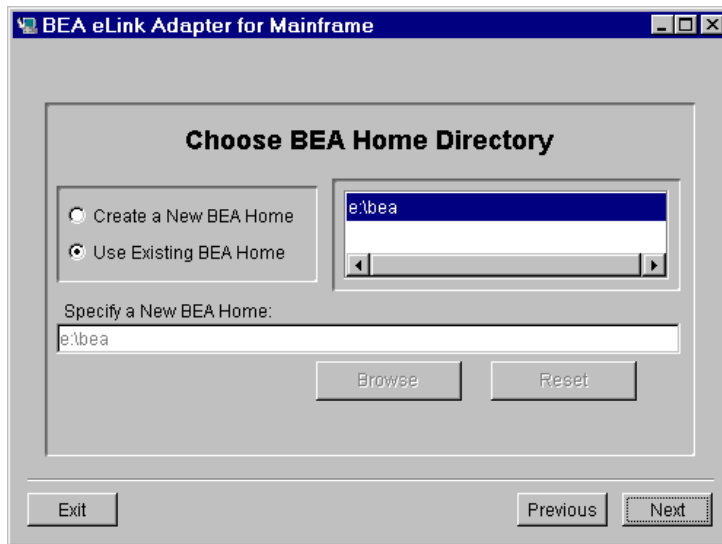
3. Click Next to continue with the installation. The License Agreement screen displays (Figure 2-2).

Figure 2-2 License Agreement Screen



4. Select Yes to accept the license agreement; then click Next to proceed with the installation. The Choose BEA Home Directory screen displays (Figure 2-3).

Figure 2-3 Choose BEA Home Directory Screen



5. Select a New or Existing BEA Home option to specify the BEA Home directory (the default is `c:\bea`). The BEA Home directory is the root directory in which you install all BEA products. This directory was set up when you installed Tuxedo.

If you want to create a new BEA Home directory, follow these steps:

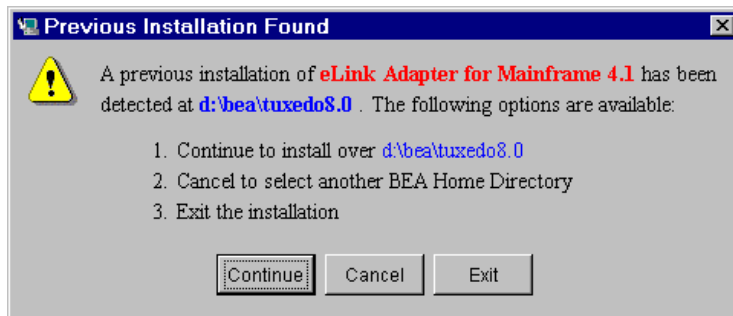
- a. Select the Create a New BEA Home option.
- b. Accept the default location for your BEA Home directory or click Browse to specify a different location. If you accept the default location, your BEA Home directory will be `c:\bea`, and your eLink Adapter for Mainframe software default installation directory will be the Tuxedo 8 Home directory .
- c. Click Next to proceed with the installation.

If you already have one or more BEA Home directories on your system, you can use one of those directories as follows:

- a. Select the Use Existing BEA Home option.

- b. Select a BEA Home directory from the list displayed to the right of the options. All valid BEA Home directories are displayed in this list. Valid BEA Home directories are directories where BEA products have been installed using the standard installation program.
- c. Click Next to proceed with the installation.
6. If the installation program encounters a previous version of eLink Adapter for Mainframe in the selected BEA Home directory, the Previous Installation Found message box displays (Figure 2-4).

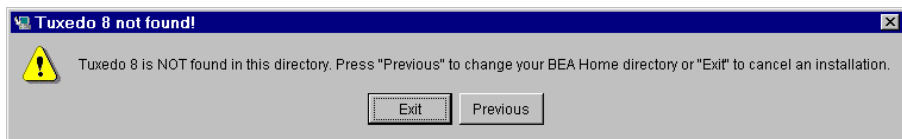
Figure 2-4 Previous Installation Found Message Box



From this message box, do one of the following:

- Click Continue to install over the previous version.
 - Click Cancel to return to the Choose BEA Home Directory Screen and select another directory.
 - Click Exit to exit the installation program.
7. If you do not have a successful installation of Tuxedo 8 in the BEA Home directory, the Tuxedo 8 Not Found! message box displays (Figure 2-5).

Figure 2-5 Tuxedo 8 Not Found Message Box

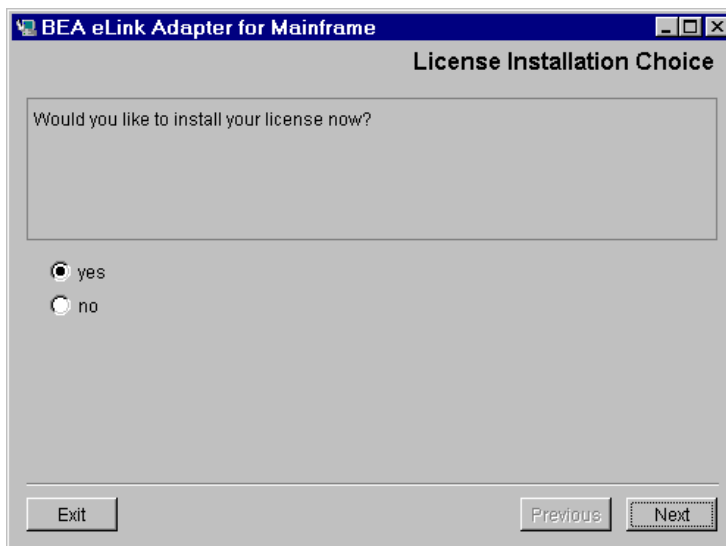


From this message box, do one of the following:

- Click Exit to exit the installation program so you can install Tuxedo 8.

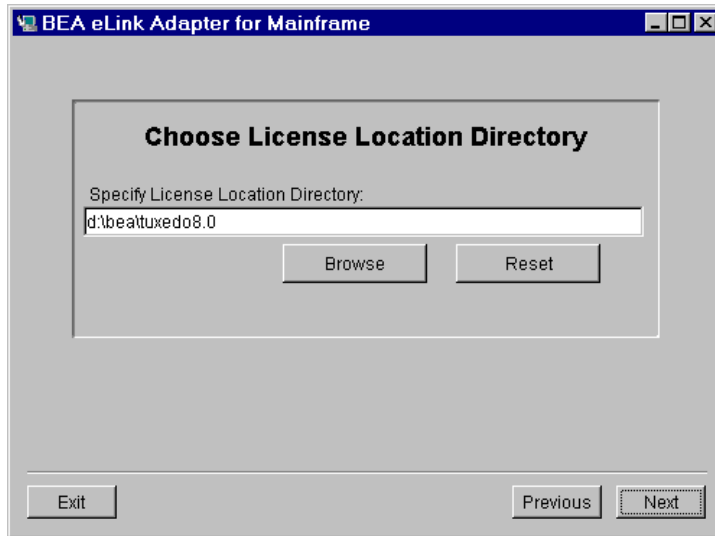
- Click Previous to return to the Choose BEA Home Directory Screen and select another directory.
8. After the product is installed, the License Installation Choice screen displays (Figure 2-6).

Figure 2-6 License Installation Choice Screen



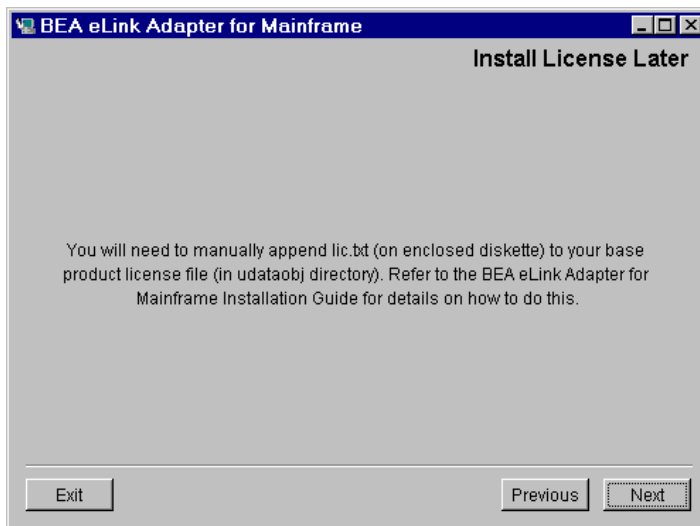
9. Select one of the following license installation options:
- Select yes.
 - ◆ Click Next and the Choose License Location Directory Screen displays (Figure 2-7).

Figure 2-7 Choose License Location Directory Screen



- ◆ Click Browse to specify the directory where your eLink Adapter for Mainframe license key (lic.txt) is located and then click Next to append the eLink Adapter for Mainframe license key to your Tuxedo 8 license.
- Select no.
- ◆ Click Next and the Install License Later screen displays with instructions for installing the license later (Figure 2-8). You may also refer to [“Manually Setting Up the License Key”](#) for more information about installing the license later.

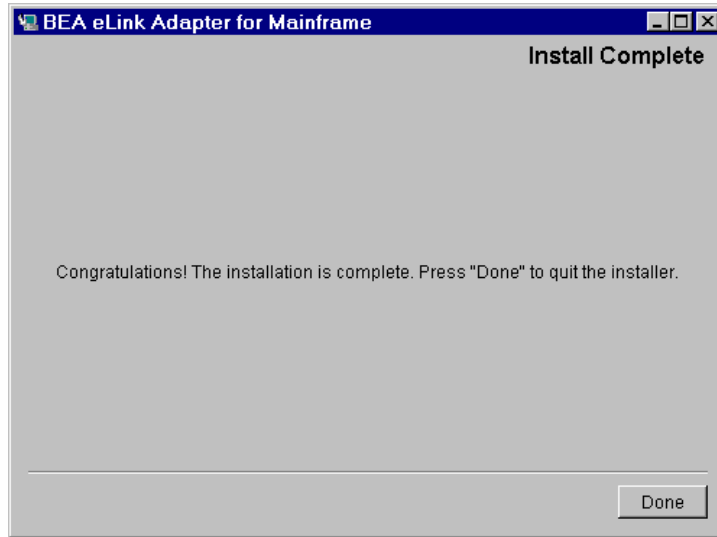
Figure 2-8 Install License Later Screen



- ◆ Click Next to finish installation.

10. Upon installation completion, the Install Complete screen displays ([Figure 2-9](#)).

Figure 2-9 Install Complete Screen



11. Click Done to exit the installation program.

Installing eLink Adapter for Mainframe Components on Solaris 8

The eLink Adapter for Mainframe Gateway, the CRM, or both the Gateway and CRM may be installed on Solaris 8.

Installing the Software in Console Mode

To install the eLink Adapter for Mainframe software on Solaris 8 in console mode, you will run the `eam41_sol8.bin` program. If you choose the `Full Installation` set, this program installs both the Gateway and the CRM on Solaris 8. You may also choose to install only the Gateway or only the CRM on Solaris 8.

2 Installing the eLink Adapter for Mainframe Software

Perform the following steps to install the eLink Adapter for Mainframe software in console mode on Solaris 8:

1. Insert the eLink Adapter for Mainframe CD-ROM in your CD device.

2. Log on as root.

```
$ su -  
Password:
```

3. Mount the CD-ROM. Mount commands vary depending on your system configuration. Refer to your System Administrator for the specific command for your system. Use a command similar to the following command to mount the CD-ROM.

```
# mount -r -F cdfs /dev/cdrom/c1b0t0l0 /mnt
```

4. Change the directory to the `unix` directory on your CD-ROM device. For example,

```
# cd /mnt/eam41
```

5. List the CD-ROM contents.

```
# ls  
eam41_Aix.bin  
eam41_Hp.bin  
eam41_Sol7.bin  
eam41_Sol8.bin  
eam41_Win.exe  
os390.tar  
mvs
```

6. Execute the Solaris 8 program to install both the eLink Adapter for Mainframe Gateway and CRM on Solaris 8:

```
# sh eam41_Sol8.bin -i console
```

7. The installation program runs and prompts you for responses (see [Listing 2-3](#) for an example). When you are asked to choose the Install Set, enter the number for the type of installation you want to perform:

1	Gateway Only
2	Distributed CRM
3	Full Install

If you choose the Gateway Only or Full Install, the software will be installed in your `tuxedo8.0` directory. If you choose to install the Distributed CRM, the software will be installed in the `eam41` directory.

Note: If you select the Distributed CRM, you will not be prompted for the license location.

Listing 2-3 UNIX Console Mode Installation Example, Full Installation on Solaris 8

```
Preparing to install...
Preparing CONSOLE Mode Installation...

=====
BEA eLink Adapter for Mainframe          (created with InstallAnywhere by Zero G)
-----

=====
Introduction
-----

This installer will guide you through the installation of 'eLink Adapter for
Mainframe'. On each step, answer the questions provided. Type "quit" at any
time to exit the installer.

=====
License Agreement
-----

Please read before installing:

BEA eLink Adapter for Mainframe(r) 4.1 Software License

The Software and accompanying documentation (respectively "Software"
and "Documentation") you have acquired are protected by the copyright laws of
the United States and international copyright treaties...

.
.
.

User Count means the number of users specified on the uniform product code
label provided on the outside packaging of the Product.

PRESS <ENTER> TO CONTINUE: y

Connection Management Software means...
.
```

2 Installing the eLink Adapter for Mainframe Software

Copyright 2001, BEA Systems, Inc. All Rights Reserved.

DO YOU AGREE WITH THE TERMS OF THE LICENSE? (Y/N)**y**

=====
Choose Install Set

Please Choose the Install Set to be installed by this installer.

- >1- Gateway Only
- 2- Distributed CRM
- 3- Full Install

ENTER THE NUMBER FOR THE INSTALL SET, OR <ENTER> TO ACCEPT THE DEFAULT: **3**

=====
Choose BEA Home Directory

- 1- Create a New BEA Home
- 2- Use Existing BEA Home

Enter a number: **2**

- 1- /bea
- 2- /bea/tuxedo8.0

Existing BEA Home: **1**

A previous installation of eLink Adapter for Mainframe 4.1
has been detected at /bea/loads/tux80.

The following options are available:

- 1- Continue to install over /bea/loads/tux80
- 2- Cancel to select another BEA Home Directory
- 3- Exit the installation

Choose a number: **1**

=====
Installing...

[=====|=====|=====|=====]
[-----|-----|-----|-----]
=====

License Selection Option

- 1- Copy License File Now
- 2- Copy License File Later

Enter a number:2

=====
Install License Later.

You will need to manually append lic.txt (on license diskette)
to your base product license file (in udataobj directory).
Refer to your BEA eLink Adapter for Mainframe Installation Guide for details on
how to do this.

=====
Install Complete

Congratulations. 'eLink Adapter for Mainframe' has been successfully installed
to:

/bea/tux80

PRESS <ENTER> TO EXIT THE INSTALLER: <ENTER>

Installing the Software in Graphics Mode

Perform the following steps to install the eLink Adapter for Mainframe software in
graphics mode on Solaris 8:

1. Insert the eLink Adapter for Mainframe CD-ROM in your CD device.
2. Log on as root to install the eLink Adapter for Mainframe software.

```
$ su -  
Password:
```

3. Mount the CD-ROM. Mount commands vary depending on your system
configuration. Refer to your System Administrator for the specific command for
your system. Use a command similar to the following command to mount the
CD-ROM on any UNIX system.

2 Installing the eLink Adapter for Mainframe Software

```
> mount -r -F cdfs /dev/cdrom/c1b0t0l0 /mnt
```

4. Change the directory to the eam41 directory on your CD-ROM device. For example,

```
> cd /mnt/eam41
```

5. List the CD-ROM contents.

```
# ls  
  
eam41_Aix.bin  
eam41_Hp.bin  
eam41_Sol7.bin  
eam41_Sol8.bin  
os390.tar  
mvs
```

6. Execute the Solaris 8 program:

```
/mnt/eam41> sh eam41_Sol8.bin
```

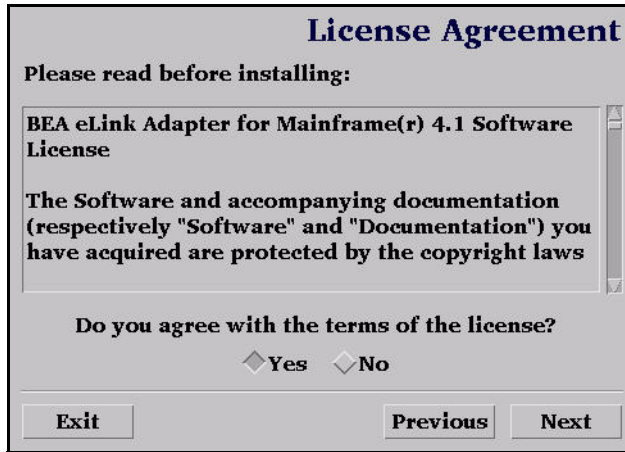
The Introduction screen (see [Figure 2-10](#)) displays.

Figure 2-10 Introduction Screen



7. Click Next to continue with the installation. The License Agreement screen displays (Figure 2-11).

Figure 2-11 License Agreement Screen



8. Select Yes to accept the license agreement; then click Next to proceed with the installation. The Choose Install Set screen displays (Figure 2-12).

Figure 2-12 Choose Install Set Screen



9. Select one of the Install Set options depending on whether you want to install the Gateway only, the CRM, or both on Solaris 8.

Note: If you choose the Gateway Only or Full Install, the software will be installed in your `tuxedo8.0` directory. If you choose to install the Distributed CRM, the software will be installed in the `eam41` directory.

10. Click Next to proceed with the installation. The Choose BEA Home Directory screen displays (Figure 2-13).

Figure 2-13 Choose BEA Home Directory Screen



11. Select a New or Existing BEA Home option to specify the BEA Home directory (the default is `c:\bea`). The BEA Home directory is the root directory in which you install all BEA products. This directory was set up when you installed Tuxedo.

If you want to create a new BEA Home directory, follow these steps:

- a. Select the Create a New BEA Home option.
- b. Accept the default location for your BEA Home directory or click Browse to specify a different location. If you accept the default location, your BEA Home directory will be `c:\bea`, and your eLink Adapter for Mainframe software default installation directory will be the Tuxedo 8 Home directory.
- c. Click Next to proceed with the installation.

If you already have one or more BEA Home directories on your system, you can use one of those directories as follows:

- a. Select the Use Existing BEA Home option.
- b. Select a BEA Home directory from the list displayed to the right of the options. All valid BEA Home directories are displayed in this list. Valid BEA Home directories are directories where BEA products have been installed using the standard installation program.
- c. Click Next to proceed with the installation.

12. If the installation program encounters a previous version of eLink Adapter for Mainframe in the selected BEA Home directory, the Previous Installation Found message box displays (Figure 2-14).

Figure 2-14 Previous Installation Found Message Box



From this message box, do one of the following:

- Click Continue to install over the previous version.
 - Click Cancel to return to the Choose BEA Home Directory Screen and select another directory.
 - Click Exit to exit the installation program.
13. If you do not have a successful installation of Tuxedo 8 in the BEA Home directory, the Tuxedo 8 Not Found! message box displays (Figure 2-15).

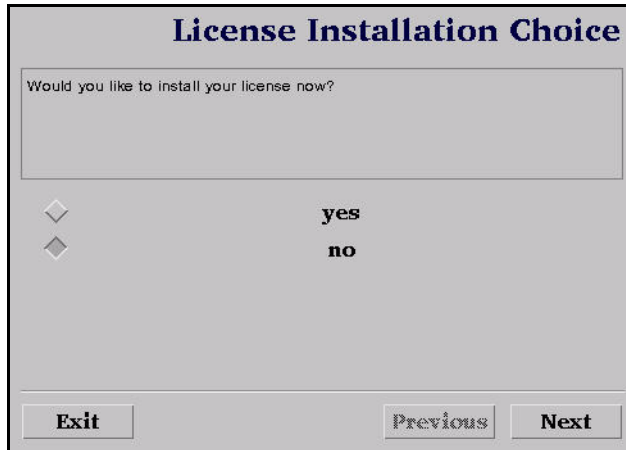
Figure 2-15 Tuxedo 8 Not Found Message Box



From this message box, do one of the following:

- Click Exit to exit the installation program so you can install Tuxedo 8.
 - Click Previous to return to the Choose BEA Home Directory Screen and select another directory.
14. After the product is installed, the License Installation Choice screen displays (Figure 2-16).
- Note:** If you are installing the Distributed CRM, you will not be prompted for the License Installation Choice. Proceed to step 16.

Figure 2-16 License Installation Choice Screen



The screenshot shows a window titled "License Installation Choice". Inside, there is a text box with the question "Would you like to install your license now?". Below this, there are two radio buttons. The first radio button is selected and is labeled "yes". The second radio button is unselected and is labeled "no". At the bottom of the window, there are three buttons: "Exit" on the left, "Previous" in the middle, and "Next" on the right.

15. Select one of the following license installation options:

- Select yes.
 - ◆ Click Next and the Choose License Location Directory Screen displays ([Figure 2-17](#)).

Figure 2-17 Choose License Location Directory Screen



The screenshot shows a window titled "Choose License Location Directory". Inside, there is a text box with the label "Specify License Location Directory:". The text box contains the path "/bea/loads/tux80". Below the text box, there are two buttons: "Browse" on the left and "Reset" on the right. At the bottom of the window, there are three buttons: "Exit" on the left, "Previous" in the middle, and "Next" on the right.

- ◆ Click Browse to specify the directory where your eLink Adapter for Mainframe license key (lic.txt) is located and then click Next to append the eLink Adapter for Mainframe license key to your Tuxedo 8 license.
- Select no.
- ◆ Click Next and the Install License Later screen displays with instructions for installing the license later ([Figure 2-18](#)). You may also refer to [“Manually Setting Up the License Key”](#) for more information about installing the license later.

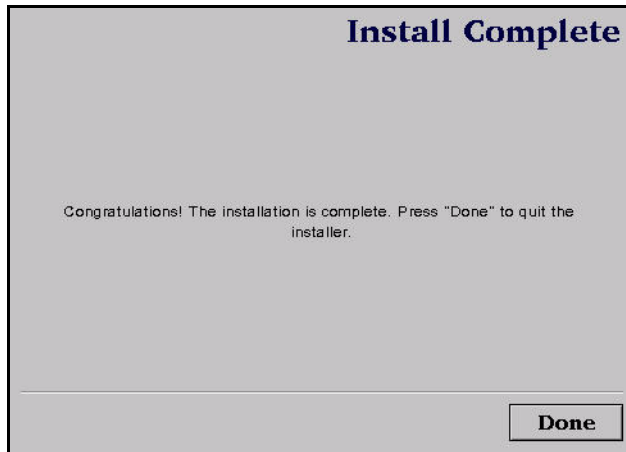
Figure 2-18 Install License Later Screen



- ◆ Click Next to finish installation.

16. Upon installation completion, the Install Complete screen displays ([Figure 2-19](#)).

Figure 2-19 Install Complete Screen



17. Click Done to exit the installation program.

Validating the eLink Adapter for Mainframe Software Installation

You can validate the eLink Adapter for Mainframe software installation in the following ways:

- [“Verifying Installation Files and Directories”](#)
- [“Running the Sample Applications”](#)

Verifying Installation Files and Directories

The eLink Adapter for Mainframe CD-ROM contains libraries and executable programs for each of the supported platforms as described in the tables in the following sections. After installing the eLink Adapter for Mainframe software, verify that these libraries and programs are installed on your system.

All directories are relative to the installation directory. Platform-specific stack abstraction libraries are included in these tables as well.

eLink Adapter for Mainframe Gateway Installation Files and Directories

The eLink Adapter for Mainframe Gateway includes the files listed in the following tables.

AIX 4.3.3

Verify that the following files are installed for the eLink Adapter for Mainframe Gateway Installation:

Table 2-3 AIX Installation Files and Directories for eLink Adapter for Mainframe Gateway Installation

Directory	Files
bin	GWSNAX
lib	libcsxcrm.so libctxcp_12.so libctxdebugs_12.so libctxos_12.so libctxplat_12.so libctxprim_12.so libgws.so crmmmon.jar
local/C	LIBGWS.text LIBGWS_CAT
elink/sna/crossplex	cpxview.v mwdrec.h xplx.c.h xplxxtuxs.c

Table 2-3 AIX Installation Files and Directories for eLink Adapter for Mainframe Gateway Installation

Directory	Files
eLink/sna/simpapp	aix.env app.env BEACONN.RDO BEASNA.RDO BEASNA.RDO.VSE DMCONFIG dminit.scr Makefile MIRRDPLC.c MIRRDPLC.c.VSE MIRRDPLC.cbl MIRRDTPC.c MIRRDTPC.cbl mirrorsrv.c README toupclt.c TOUPDPLS.c TOUPDPLS.c.VSE TOUPDPLS.cbl TOUPDTPS.c TOUPDTPS.c.VSE TOUPDTPS.cbl TOUPDTPS.cbl.VSE UBBCONFIG EXPIMSSV.c IMPIMSSV.cbl simpims.c BEAWTOR.asm
udataobj/codepage	00819x00037 00819x00273 00819x00278 00819x00284 00819x00285 00819x00297 00819x00500 00819x00860 00819x01047 00912x00870 none tuxedo

HP-UX 11

Verify that the following files are installed for the eLink Adapter for Mainframe Gateway Installation:

Table 2-4 HP-UX Installation Files and Directories for eLink Adapter for Mainframe Gateway Installation

Directory	Files
bin	GWSNAX
lib	libcsxscrm.sl libctxcp_12.sl libctxdebugs_12.sl libctxos_12.sl libctxplat_12.sl libctxprim_12.sl libgws.sl crmmmon.jar
local/C	LIBGWS.text LIBGWS_CAT
elink/sna/crossplex	cpxview.v mwdrec.h xplxc.h xplxtuxs.c

Table 2-4 HP-UX Installation Files and Directories for eLink Adapter for Mainframe Gateway Installation

Directory	Files
eLink/sna/simpapp	app.env BEACONN.RDO BEASNA.RDO BEASNA.RDO.VSE DMCONFIG dminit.scr hpux.env Makefile MIRRDPLC.c MIRRDPLC.cbl MIRRDPLC.c.VSE MIRRDTPC.c MIRRDTPC.cbl mirrorsrv.c README toupclt.c TOUPDPLS.c TOUPDPLS.c.VSE TOUPDPLS.cbl TOUPDTPS.c TOUPDTPS.c.VSE TOUPDTPS.cbl TOUPDTPS.cbl.VSE UBBCONFIG EXPIMSSV.c IMPIMSSV.cbl simpims.c BEAWTOR.asm
udataobj/codepage	00819x00037 00819x00273 00819x00278 00819x00284 00819x00285 00819x00297 00819x00500 00819x00860 00819x01047 00912x00870 none tuxedo

Solaris 7 or 8

Verify that the following files are installed for the eLink Adapter for Mainframe Gateway Installation:

Table 2-5 Solaris 7 or 8 Installation Files and Directories for eLink Adapter for Mainframe Gateway Installation

Directory	Files
bin	GWSNAX
lib	libcsxcrm.so libctxcp_12.so libctxdebugs_12.so libctxos_12.so libctxplat_12.so libctxprim_12.so libgws.so crmmon.jar
local/C	LIBGWS.text LIBGWS_CAT
elink/sna/crossplex	cpxview.v mwdrec.h xplxc.h xplxtuxs.c

Table 2-5 Solaris 7 or 8 Installation Files and Directories for eLink Adapter for Mainframe Gateway Installation

Directory	Files
eLink/sna/simpapp	app.env BEACONN.RDO BEASNA.RDO BEASNA.RDO.VSE DMCONFIG dminit.scr Makefile MIRRDPLC.c MIRRDPLC.c.VSE MIRRDPLC.cbl MIRRDTPC.c MIRRDTPC.cbl mirrorsrv.c README solaris.env toupclt.c TOUPDPLS.c TOUPDPLS.c.VSE TOUPDPLS.cbl TOUPDTPS.c TOUPDTPS.c.VSE TOUPDTPS.cbl TOUPDTPS.cbl.VSE UBBCONFIG EXPIMSSV.c IMPIMSSV.cbl simpims.c BEAWTOR.asm
udataobj/codepage	00819x00037 00819x00273 00819x00278 00819x00284 00819x00285 00819x00297 00819x00500 00819x00860 00819x01047 00912x00870 none tuxedo

Windows NT 4.0 Server, Windows 2000 Server, or Windows 2000 Advanced Server

Verify that the following files are installed for the eLink Adapter for Mainframe Gateway Installation:

Table 2-6 Windows Installation Files and Directories for eLink Adapter for Mainframe Gateway Installation

Directory	Files
bin	csxcrm.dll ctxcp_12.dll ctxdebugs_12.dll ctxos_12.dll ctxplat_12.dll ctxprim_12.dll gws.dll gwsnax.exe
lib	crmon.jar
local/C	LIBGWS.text LIBGWS_CAT
elink/sna/crossplex	cpxview.v mwdrec.h xplxc.h xplxtuxs.c

Table 2-6 Windows Installation Files and Directories for eLink Adapter for Mainframe Gateway Installation

Directory	Files
eLink/sna/simpapp	app.env BEACONN.RDO BEASNA.RDO BEASNA.RDO.VSE BEAWTOR.asm DMCONFIG dminit.scr Makefile MIRRDPLC.c MIRRDPLC.c.VSE MIRRDPLC.cbl MIRRDTPC.c MIRRDTPC.cbl mirrorsrv.c winenv.bat README simpims.c toupclt.c TOUPDPLS.c TOUPDPLS.c.VSE TOUPDPLS.cbl TOUPDTPS.c TOUPDTPS.c.VSE TOUPDTPS.cbl TOUPDTPS.cbl.VSE UBBCONFIG EXPIMSSV.c IMPIMSSV.cbl
udataobj/codepage	00819x00037 00819x00273 00819x00278 00819x00284 00819x00285 00819x00297 00819x00500 00819x00860 00819x01047 00912x00870 none tuxedo

CRM Installation Files and Directories

The CRM includes the files listed in the following tables.

Solaris 8

Verify that the following files are installed for the eLink Adapter for Mainframe CRM Installation:

Table 2-7 Solaris 8 Installation Files and Directories for CRM Installation

Directory	Files
bin	CRM CRMLOGS crmlkon crmlkoff crmdown solaris.env
lib	libctxdebugs_12.so libctxos_12.so libctxprim_12.so libctxplat_12.so libcsxappc.so libcsxxfm.so libcsxxmw.so libcsxgpw.so libcsxcrm.so libcsxxcrm.so libcsxscrm.so libcsxspx70.so libgpnet.so.71 libengine.so.71

z/OS UNIX V1R1 or OS/390 UNIX V2R8, V2R9, or V2R10

Verify that the following files are installed for the CRM Installation:

Table 2-8 z/OS or OS/390 UNIX Installation Files and Directories for CRM Installation

Directory	Files
bin	CRM CRMLOGS crmlkoff crmlkon crmdown uss.env
lib	ctxdebugs_12.dll ctxos_12.dll ctxprim_12.dll ctxplat_12.dll csxappc.dll csxxfm.dll csxxmw.dll csxgpw.dll csxcrm.dll csxxcrm.dll csxsrm.dll csxvtm28.dll libgp.dll (40 bit) libgpnet.dll

z/OS V1R1 or OS/390 MVS V2R8, V2R9, or V2R10

Verify that the following files are installed for the CRM Installation:

Table 2-9 z/OS or OS/390 MVS Installation Files and Directories for CRM Installation

Directory	Files
misc	README dsupload.jcl install.jcl uncmprss.jcl

Table 2-9 z/OS or OS/390 MVS Installation Files and Directories for CRM Installation

Directory	Files
load library	CRM CRMLOGS CRMLKON CRMLKOFF CRMDOWN CSXAPPC CSXXFM CSXXMW CSXGPW CSXCRM CSXXCRM CSXSCRM CSXVTM28 DEBUGS LIBGP LIBGPNBT LIBGP40 OS PRIM PLAT
data library	ENV
sample library	CRMLOGS CRMLKON CRMLKOFF CRMSTART CRMDOWN

Solaris 8 Full Installation Files and Directories

Verify that the following files are installed for the Full Installation of the eLink Adapter for Mainframe Gateway and CRM on Solaris 8:

Table 2-10 Solaris 8 Full Installation Files and Directories

Directory	Files
bin	CRM CRMLLOGS crmlkon crmlkoff crmdown GWSNAX solaris.env
lib	crmmmon.jar libcsxappc.so libcsxcrm.so libcsxgpw.so libcsxscrm.so libcsxspx70.so libcsxxcrm.so libcsxxfm.so libcsxxmw.so libctxcp_12.so libctxdebugs_12.so libctxos_12.so libctxplat_12.so libctxprim_12.so libgws.so
local/C	LIBGWS.text LIBGWS_CAT
elink/sna/crossplex	cpxview.v mwdrec.h xplx.c.h xplxxtuxs.c

Table 2-10 Solaris 8 Full Installation Files and Directories

Directory	Files
eLink/sna/simpapp	app.env BEACONN.RDO BEASNA.RDO BEASNA.RDO.VSE DMCONFIG dminit.scr Makefile MIRRDPLC.c MIRRDPLC.c.VSE MIRRDPLC.cbl MIRRDTPC.c MIRRDTPC.cbl mirrorsrv.c README solaris.env toupclt.c TOUPDPLS.c TOUPDPLS.c.VSE TOUPDPLS.cbl TOUPDPS.c TOUPDPS.c.VSE TOUPDPS.cbl TOUPDPS.cbl.VSE UBBCONFIG EXPIMSSV.c IMPIMSSV.c simpims.c BEAWTOR.asm
udataobj/codepage	00819x00037 00819x00273 00819x00278 00819x00284 00819x00285 00819x00297 00819x00500 00819x00860 00819x01047 00912x00870 none tuxedo

Running the Sample Applications

After you install eLink Adapter for Mainframe, you can verify your eLink Adapter for Mainframe installation by running the following sample applications:

- `toupclt.c` for platforms based on UNIX
- `ntenv.bat` for platforms based on Windows

Refer to the “Verifying the Software” section of the *BEA eLink Adapter for Mainframe User Guide* for more detailed information about verifying your software.

Uninstalling eLink Adapter for Mainframe

This section provides instructions for uninstalling eLink Adapter for Mainframe. The following topics are discussed:

- [“Uninstalling on Non-mainframe UNIX Platforms in Console Mode”](#)
Note: Uninstall on non-mainframe UNIX platforms can only be done in Console Mode. Graphic Mode is not available.
- [“Uninstalling on Windows Platform”](#)
- [“Uninstalling on z/OS or OS/390 Platforms”](#)

Uninstalling on Non-mainframe UNIX Platforms in Console Mode

To remove eLink Adapter for Mainframe from a UNIX platform:

1. Change directories to your `uninstaller_EAM` directory with a command similar to the following example:

```
> cd /bea/tuxedo8.0/uninstaller_EAM
```
2. Start the uninstallation program with the following command:

2 Installing the eLink Adapter for Mainframe Software

```
/bea/tuxedo8.0/uninstaller_EAM> sh Uninstall -i console
```

[Listing 2-4](#) displays an eLink Adapter for Mainframe uninstallation.

Note: The single-dash bar just beneath the double-dash bar in [Listing 2-4](#) is a progress indicator. When the single-dash bar becomes the same length as the double-dash bar, uninstallation is complete.

Listing 2-4 UNIX Console Mode Uninstall Example

```
Preparing CONSOLE Uninstall...
=====
BEA eLink Adapter for Mainframe          (InstallAnywhere Uninstaller by Zero G)
-----

About to uninstall...

    BEA eLink Adapter for Mainframe

This will completely remove all components installed by InstallAnywhere.  It
will not remove files and folders created after the installation.

PRESS <ENTER> TO BEGIN THE UNINSTALL, OR 'QUIT' TO EXIT THE UNINSTALLER: <ENTER>

=====
Uninstall...
-----

[=====|=====|=====|=====]
[------|-----|-----|-----]

=====
Uninstall Complete
-----

All items were successfully uninstalled.

PRESS <ENTER> TO EXIT THE UNINSTALLER: <ENTER>
```

Uninstalling on Windows Platform

Perform the following steps to remove the eLink Adapter for Mainframe software from a Windows platform:

1. Choose Start→Programs→BEA WebLogic E-Business Platform→eLink Adapter for Mainframe 4.1→Uninstall BEA eLink Adapter for Mainframe from the Start menu. The eLink Adapter for Mainframe Uninstaller screen displays ([Figure 2-20](#)).

Figure 2-20 eLink Adapter for Mainframe Uninstaller Screen



2. Click Uninstall to start removing eLink Adapter for Mainframe. When the process is complete, the screen shown in [Figure 2-21](#) is displayed.

Figure 2-21 eLink Adapter for Mainframe Uninstall Complete Screen



3. Click Exit to complete the uninstallation.

Note: Some files may not be removed because they are required for another BEA product.

Uninstalling on z/OS or OS/390 Platforms

To remove the eLink Adapter for Mainframe product from your z/OS or OS/390 platform, consult with your system administrator. The process for removing applications from these platforms varies, depending on your particular system setup.

Manually Setting Up the License Key

You must enter the license key for eLink Adapter for Mainframe software to enable the connection capabilities for your system. As a prerequisite, the Tuxedo 8 must be installed and operational with its license key file available. To enable the eLink Adapter for Mainframe license key, you must append the license key file provided with the product software to the Tuxedo license key file.

Warning: Do not alter any parameters within sections of the license key files. Doing so will invalidate the license and may disable your product software.

Perform the following steps to use the license key.

1. With the text editor of your choice, open the BEA license key file in the `udataobj/lic.txt` sub-directory located in the Tuxedo platform directory. An example of this file follows:

Listing 2-5 Example of BEA License Key File

```
[TUXEDO 8.0]
LICENSEE=BEA Professional Services
SERIAL=1000000104
ORDERID=0
USERS=20
TYPE=SDK
WEBGUI=separate
WSCOMPRESSION=separate
EXPIRATION=2001-12-31
SIGNATURE=Xo2014900taTEUUb5L45UtAhUA12imvbiz92HladkaphonjQA/zeXXY=
```

2. Append the eLink Adapter for Mainframe license key file, `lic.txt` to the Tuxedo license file.

Listing 2-6 Example of eLink Adapter for Mainframe License Key File

Appended to BEA License Key File

```
# BEA License File
#
# This file contains license tokens to enable BEA TUXEDO and
# optional components.
# Each License begins with a "[section name]" and ends with
# a "SIGNATURE=" line.
#
# New license sections should be appended to this file, and the
# old section, if present, should be deleted.
#
# WARNING: Altering parameters withing a section will invalidate
# the license. This is a violation of BEA Systems licensing
# agreement, and may also disable TUXEDO or optional components.
# For Technical Support and to obtain a license, call 888-BEA-SUPT
# (888-232-7878) or 408-570-8070

[BEA TUXEDO]
VERSION=8.0
LICENSEE=BEA Internal Development User
SERIAL=177
ORDERID=Internal
USERS=400000
TYPE=SDK
DEVELOPERS=200000
EXPIRATION=2001-12-31
SIGNATURE=MC0CFA6ehW+FOQnKL45UtAhUAUAohqPyD/IB/mgPOe6AVr7YIvW8a0=
.
.
.
# BEA eLink Adapter License File
#
# This file contains license tokens to enable a BEA eLink Adapter.
# Each License begins with a "[section name]" and ends with
# a "SIGNATURE=" line.
#
# WARNING: Altering parameters withing a section will invalidate
# the license. This is a violation of BEA Systems licensing
# agreement, and may also disable eLink components.
#
# For Technical Support and to obtain a license, call 888-BEA-SUPT
# (888-232-7878) or 408-570-8070

[eLink Adapter for Mainframe]
LICENSEE=BEA SYSTEMS
VERSION=4
SERIAL=A101999739
```

```
ORDERID=Internal  
EXPIRATION=2003-09-29  
SIGNATURE=Xo2014900taTEUb5L45UtAhUA12imvbiz92HladkaphonjQA/zeXXY=
```

3. Save the file and exit the text editor. Your license key is now in effect.

