



BEA AquaLogic™ Enterprise Repository

Import/Export Tool Guide

Table of Contents

- **Overview**
- **Starting the Tool**
 - **Launching From AquaLogic Enterprise Repository**
 - **Launching From Command Line**
 - **Initial Startup**
- **Exporting Items from ALER**
- **Importing Items into ALER**



Overview

The BEA AquaLogic Enterprise Repository Import/Export Tool is designed to allow the interchange of assets and related metadata between instances of AquaLogic Enterprise Repository.

Archives must be completely self-contained. That is, all dependent data required to fully describe all exported items will also be exported. The dependencies are as follows:

- Assets and Compliance Templates rely on Types
- Asset Types and Compliance Templates Types rely on Categorization Types and Relationship Types

For example, when exporting a single Asset, the resultant archive will contain that Asset, its associated Asset Type, and any Categorization Types and Relationship Types on which that Asset Type depends. When importing, all data contained within the archive will be imported into the destination instance of AquaLogic Enterprise Repository. Conflicts resulting from the existence of items with the same name are resolved in the following manner:

- Assets, Compliance Templates, Policies, and their respective Types must have unique names within the system. When an imported item has the same name as an item already in the destination ALER instance, "v2" will be appended to the name of the new (imported) item. Each iteration of this occurrence will result in a new version of the item: "v3," "v4," and so on. If the name of an imported item is already appended with a "Vn" designation, "v2" will be further appended to that name.
- Categorizations Types merge data in the event of a destination Categorization Type of the same name. Categorizations in the source archive that are not present on the destination system will be added to the existing (destination) Categorization Type.
- Source and destination Relationship Types sharing the same name and type are ignored; existing descriptive text is retained on the destination system. When source and destination Relationship Types share the same name, but are of different types,

the name of the source Relationship type is appended with "v2," as described above, upon import to the destination system.

NOTE: If your AquaLogic Enterprise Repository is or will be configured to be secured by Siteminder, you will need to configure the policy server to ignore (or unprotect) the following URL to allow the Import/Export tool to function properly

- o `http://appserver.example.com/aler/services/`



Starting the Tool

The **Import/Export Tool** can be run as a stand-alone client or launched from within ALER from the **Admin** screen. The Import/Export Tool requires JDK 1.4.1 or later.

Launching From BEA AquaLogic Enterprise Repository

To enable launching from the **Admin** Tab, a new property must be configured and added and set to **True**:

- `cmee.importexport.enabled`

This will enable an Import/Export section in ALER. Due to the nature of the Import/Export Tool and the amount of data required for a comprehensive backup, the tool is restricted to users who are assigned the **Admin** role, such as the built-in *aler* user. The link to launch the Import/Export Tool is visible only to users with the **Admin** role.

- **Note:**
 - Since Import/Export is a self-contained tool utilizing the AquaLogic Enterprise Repository OpenAPI, you will be required to log in again after launching it from AquaLogic Enterprise Repository.

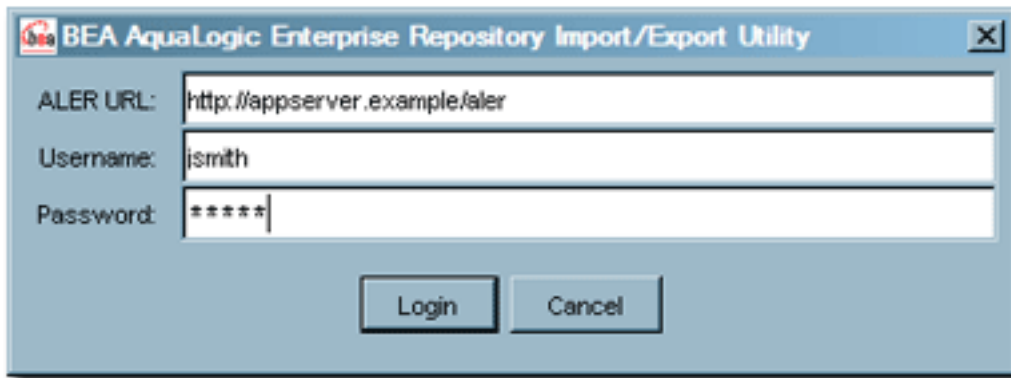
Launching From Command Line

Ensure that the JDK (1.4.1 or later) is on the command path and that `JAVA_HOME` is set. Copy the `impexp/` directory from the install media and execute the following:

- **Win32 Platforms**
 - `impexp.bat`
- **Unix/Linux Platforms**
 - `sh ./impexp.sh`

Initial Startup

Upon launching the Import/Export Tool, the user is prompted to enter connection information for AquaLogic Enterprise Repository

A screenshot of a Java-style dialog box titled "BEA AquaLogic Enterprise Repository Import/Export Utility". The dialog has a blue header bar with a small BEA logo on the left and a close button (X) on the right. Below the header, there are three text input fields. The first is labeled "ALER URL:" and contains the text "http://appserver.example/aler". The second is labeled "Username:" and contains the text "jsmith". The third is labeled "Password:" and contains six asterisks "*****". At the bottom of the dialog, there are two buttons: "Login" and "Cancel".

- **Registry URL**

- Path to the AquaLogic Enterprise Repository installation, usually the same as the servlet path, as defined in the system settings. Example: `http://appserver.example.com/aler/`

- **Username**

- Name of a user who has been granted the **Admin** role within AquaLogic Enterprise Repository.

- **Password**

- Password for the user specified above.

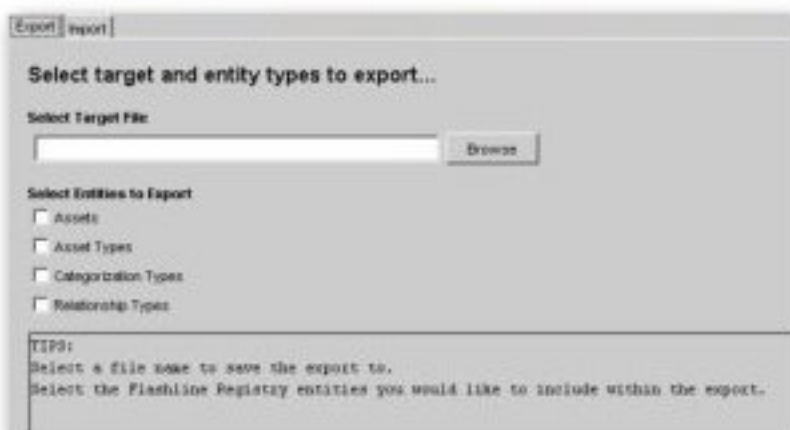
Exporting Items from ALER

This procedure is performed on the ALER **Admin** screen.

1. Click **Import Export** in the **Admin** sidebar.
2. Click **Import / Export Client**

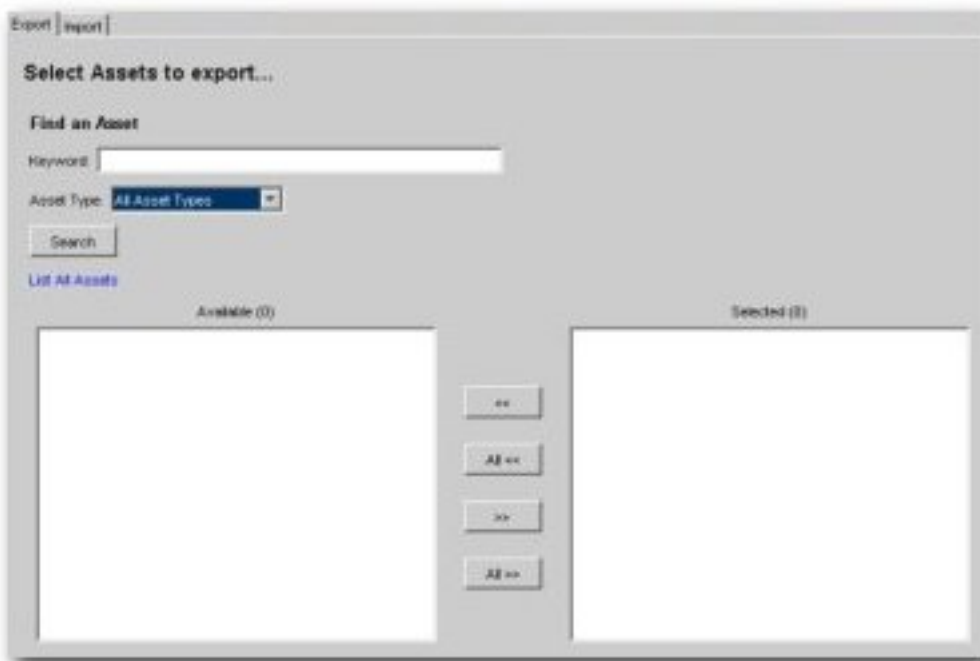
The **Import / Export Client** launches.

3. Click the **Export** Tab.



4. Enter the appropriate filename in the **Select Target File** text box or click **Browse** to select the **Target File** for the export.
5. Use the **Select Entities to Export** checkboxes to identify the entities to be exported. This selection determines the specific behavior of the export client in subsequent steps.
6. Click **Next**.

The **Select...** pop-up appears, as determined by the selection in **Step 5**.



7. Use **Search** or click **List all...** to display a list of items in the **Available** column.
8. Use the << and >> buttons to move selected items between the **Available** and the **Selected** columns.
9. Click **Next**.

If more than one selection was made in **Step 5 (Select Entities to Export)**, repeat **Step 7** and **Step 8** in the next **Select...** pop-up to select the next group of items for export.

10. Click **Next**.

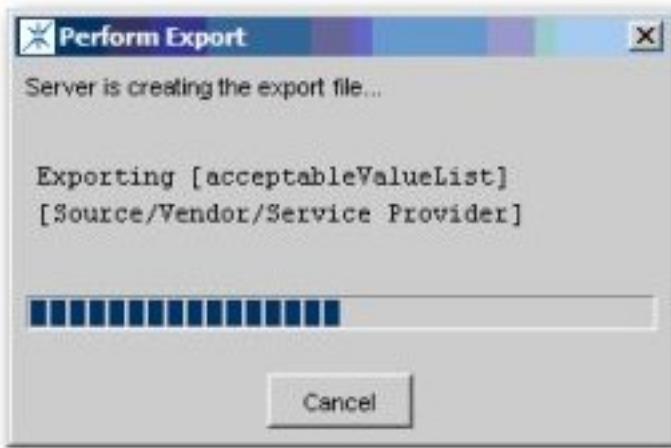
A list of the files to be exported appears in the **Ready to perform export...** pop-up.



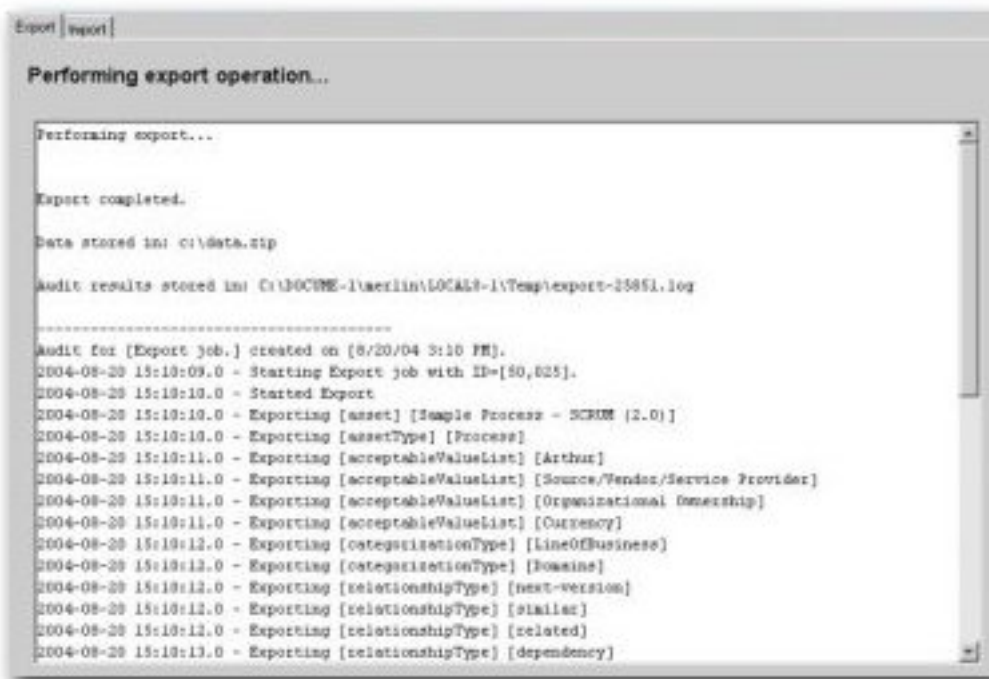
11. Click **Next**.

A progress bar indicates the status of the export process.

Note: Variations in the size and complexity of the exported items will affect the speed of this process and the behavior of the progress bar.



A summary of the export is displayed on completion.



On Microsoft Windows platforms, Windows Explorer will open to the folder in which the archive was saved (assuming system permissions allow shell execution from the application).

Importing Items into ALER

This procedure is performed on the ALER **Admin** screen.

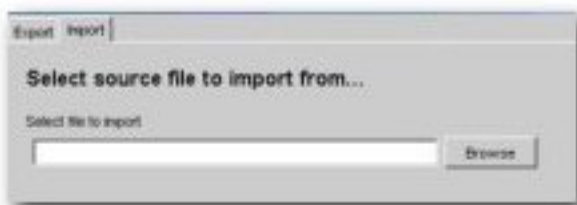
1. Click **Import Export** in the **Admin** sidebar.

2. Click **Import / Export Client**

The **Import / Export Client** launches.

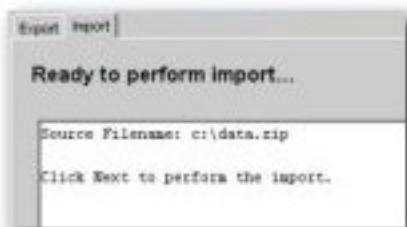
3. Click the **Import** tab.

4. Enter the appropriate filename in the **Select file to import** text box or click **Browse** to select the **source file** for the import.



5. Click **Next**.

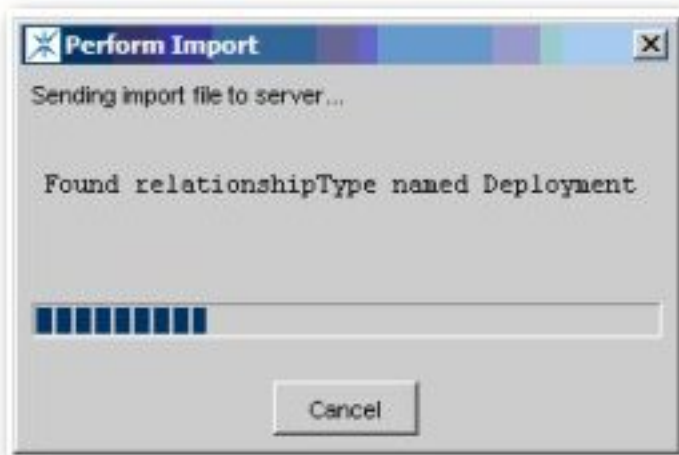
The selected source file is listed in the **Ready to perform import...** pop-up.



6. Click **Next**.

A progress bar indicates the status of the import process. Variations in the size and complexity of the imported items will affect the speed of this process and the behavior

of the progress bar.



A summary of the import is displayed on completion.

